

# The Leavenworth Echo

\$1.00  
Volume 124 • No. 48

Upper Valley News Since 1904  
A Ward Media Publication

 leavenworthecho.com



**From the publisher**  
Gratitude in action, making thanks count. Gratitude is an active force capable of transforming our communities. | A2



A global movement spreading hope and generosity | BI-BIO

## Leavenworth's Fowl Play 5k to mark ten years of local Thanksgiving tradition



COURTESY OF AMY MASSEY

Runners take to the line ahead of the start of the 2023 Thanksgiving morning Fowl Play 5k.



**FOWL PLAY 5K FUN RUN**

**THURSDAY, NOV. 28**  
**8:30 AM CHECK-IN**  
**9 AM START**

BROUGHT TO YOU BY THE CASCADE HIGH SCHOOL CROSS COUNTRY TEAM & LEAVENWORTH SKI HILL HERITAGE FOUNDATION  
QUESTIONS: FOWLPLAY5K@GMAIL.COM

COURTESY OF FOWL PLAY 5K

**By CAROLINE MENNA**  
Ward Media Intern

Leavenworth's 10th Annual Turkey Trot, affectionately known as the Fowl Play 5k, will take place on Thanksgiving morning, November 28, to bring the community together for a decade of fitness, fun, and fundraising.

Every Thanksgiving, people run, walk, or waddle through rain, snow, or sun in a fun community event that also welcomes Leavenworth's holiday visitors. Costumes, dogs, kids in strollers, and walkers - all are welcome for this lively, untimed 5K.

Participants are encouraged to embrace the festive spirit by donning Thanksgiving-themed costumes.

Started in 2014 by the Cascade High School tennis team and now organized by the cross country team

in partnership with the Leavenworth Ski Hill Heritage Foundation, the Fowl Play 5k has become a hometown Thanksgiving tradition.

"We're excited to be holding the tenth annual Fowl Play 5k," said cross country coach Dayle Massey. "This event has become a staple in our community, and it's a wonderful way to kick off Thanksgiving Day while supporting local kids in sports."

Over the past decade, the Fowl Play 5k has continued to grow, with almost 300 participants last year. This year, organizers are aiming to continue that trend.

"We're hoping to see a record number of participants this year," added Massey. "Whether you're a seasoned runner or just looking for a fun way to get active with family

See **FOWL PLAY** Page A9

## Cascade School District weighs options for limiting cellphone use in classrooms

**By TAYLOR CALDWELL**  
Ward Media Staff Reporter

LEAVENWORTH – Cascade School District (CSD) is considering implementing a district wide policy regarding restricting phone use in schools.

Currently, cellphones are allowed in school for educational purposes only, but monitoring their use has been a challenge and burden for teachers, according to Cascade High School (CHS) Principal James Swanson.

"Right now at the high school, just to be transparent, the kids are using them a lot and it's not for necessarily educational purposes, so we're trying to rein that in, and we need help," said Swanson.

CSD's consideration is amid a nationwide effort to effectively manage phone use in classrooms. Eight states have passed state-wide policies that ban or restrict cellphone use in schools, including Florida and California, according to KFF Health News.

Policymakers hope the changes will mitigate classroom distractions, as well as youth mental health concerns, following 2023 advisory in which the U.S. Surgeon General Dr. Vivek Murthy warned of the impact social media has on youth mental health.

In Washington, the Office of Superintendent of Public Instruction released a recommendation for school districts to adopt uniform policies around cellphone use by the 2025-2026 school year. School districts such as Pasco, Kennewick, Monroe, Reardon-Edwall, Mercer Island, and Seattle Public Schools have already implemented policies that limit or ban cellphone use.

Recently, CSD leadership and advocates visited Mercer Island High School (MIHS), whose district implemented a cellphone ban during school hours this year. The district's policy requires students to place their cellphones, earbuds and smart watches in pouches called Yondr bags each morning, which are locked and placed in the backpack until the end of the school day. Students with medical exceptions have velcro bags.

"For me, one of the most striking things was walking into the school and just seeing kids walking through the hallways, talking to each other, looking up. We all noticed their posture. Nobody was hunched over a phone," said CSD Superintendent Tracey Edou.

Mercer Island School District said it saw success in one school where rules and expectations were clear from the beginning, rather than another school, which struggled with expectations during its rollout. In order to mitigate safety, the district's policy states that in the case of emergency, students will have access to their phones either by unlocking the pouch or cutting them open, staff will have access to their personal cellphones, each classroom has a phone that can make calls within or outside the school, and the district will communicate with families via email, text, social media, the website, and robocalls.

The MIHS leadership class told CSD representatives that they would have preferred the policy was implemented during the school year rather than over summer, and felt that the Yondr bags were overkill.

"It was fun to listen to them, because in the same breath, they would say that they really don't

See **CASCADE SCHOOL** Page A9

## CCFD #3 Fire Chief Kelly O'Brien reflects on 36 years of service

**By TAYLOR CALDWELL**  
Ward Media Staff Reporter

LEAVENWORTH – Chelan County Fire District #3 (CCFD #3) Fire Chief Kelly O'Brien celebrated his retirement from 36 years of service on Nov. 21.

"I'm just appreciative of the fire chiefs that brought me into the fire service, Chief Taylor, Chief DeVore, that they gave me opportunities to learn and develop as a fire chief and a firefighter. I'm thankful for the support the community has given us, and I'm thankful for the people that are not only in the organization now, but have been in the organization at some time during those 36 years,"



COURTESY OF STEPHANIE KUCH / CCFD

See **KELLY O'BRIEN** Page A9 Chief O'Brien stands in the middle of CCFD #3 personnel and commissioners at his retirement party.

## Chelan PUD approves two years of rate increases, average bills to rise \$2-4 monthly

NCW News  
Ward Media

WENATCHEE — The Chelan Public Utility District Board of Commissioners has approved a two-year extension of rate increases following three months of discussion.

The commission voted unanimously to implement annual rate increases of 3-4% for both 2025 and 2026, with the changes taking effect each June. Under the approved plan, average residential customers will see their monthly electricity bills increase by approximately \$2. Water and wastewater customers will

experience increases of \$3 to \$4 per month based on average usage.

Between 2018 and 2024, the cost to generate and deliver electricity increased from \$100 to \$153 per month per customer. During this same period, average monthly electricity bills rose from \$55 to \$66.

The approved rate plan extends the 2020-2024 strategic plan. According to a survey, customers indicated a preference for small rate adjustments over time, rather than large increases.

Chelan PUD maintains lower residential electricity rates through revenue from selling surplus energy produced at its dams. As the gap

widens between the cost to produce electricity and what customers pay, it puts more pressure on power sales.

This reliance on power sales creates a higher risk of larger rate increases in the future to cover costs. The utility held three public meetings around the county and a public hearing on September 16. Commissioners studied details of the proposal and discussed the rate structure of each utility service -- electricity, water, wastewater and wholesale fiber.

The 2025 annual budget, which includes the rates adopted on Monday, November 18, will be considered for approval December 2.

The commission also approved funding for the Southwest Power Pool's Markets+ effort to develop a day-ahead and real-time energy market in the Northwest. The PUD's share is estimated to be \$1-2 million depending on the total number and size of other participants.

Additionally, Dan Koch was introduced as Chelan PUD's new chief operating officer. Koch has over 30 years of experience in engineering, project and construction management, and utility management. He previously served as vice president of energy delivery at Puget Sound Energy.

### Inside The Echo this Week

5 Things to do this Week.....	A2	Community Calendar.....	A3	Kid Scoop.....	A10
Business Directory.....	A6	Classifieds.....	A8-A9	Sheriff Report.....	A2
Church Guide.....	A6	From the Publisher.....	A2	Advertising Flyers:	
Cascade Winter Schedule.....	A4	Giving Tuesday.....	B1-B10	Safeway, Dan's Food Market	

\$1.00



8 06805 93175 4

Phone:  
509-548-5286

www.leavenworthecho.com







**We've got Kodiak PRIDE!**

**Dan's FOOD Market**

From your fresh, friendly LOCAL grocer. 509-548-5611

**Mountain Country Corner**

We've got spirit, **yes we do!**

843 Front St., Ste.A | 509-548-5312

*Fueling Champions:*  
Supporting Kodiak Fall Sports

Cool air, hot competition: Fall sports ignite school spirit

The Leavenworth Echo is proud to cheer for the Kodiaks

**Let's go Kodiaks!**

**State Farm**

**Bruce Cheadle,**  
(509) 782-1659

**Your team in the game, our team providing care - a winning combination!**

**CASCADE MEDICAL**  
PARTNERS IN YOUR HEALTH

**ONE SPIRIT, ONE TEAM, ONE WIN!**

München Haus  
709 Front St. Leavenworth  
509-548-1158  
www.munchenhaus.com

**CASCADE WINTER SPORTS SCHEDULE**

Boys Basketball				
Tue, Dec 3	6:00 PM	Cascade vs.	Thorp	Home
Thu, Dec 5	7:30 PM	Cascade vs.	Manson	Away
Mon, Dec 9	7:00 PM	Cascade vs.	Moses Lake Christian Academy	Home
Tue, Dec 10	7:15 PM	Cascade vs.	Omak	Away
Fri, Dec 13	8:00 PM	Cascade vs.	Sultan	Away
Fri, Dec 20	7:15 PM	Cascade vs.	Chelan	Away
Sat, Dec 21	4:30 PM	Cascade vs.	Waterville-Mansfield	Away
Wed, Jan 3	7:15 PM	Cascade vs.	Cashmere	Away
Sun, Jan 7	7:15 PM	Cascade vs.	Omak	Away
Tue, Jan 9	7:15 PM	Cascade vs.	Easton	Home
Sun, Jan 14	7:15 PM	Cascade vs.	Lake Roosevelt	Home
Tue, Jan 16	7:15 PM	Cascade vs.	Moses Lake	Home
Sun, Jan 21	7:30 PM	Cascade vs.	Liberty Bell	Away
Tue, Jan 23	7:15 PM	Cascade vs.	Chelan	Home
Thu, Jan 25	7:30 PM	Cascade vs.	Entiat	Away
Sun, Jan 28	7:30 PM	Cascade vs.	Bridgeport	Away
Wed, Jan 31	7:30 PM	Cascade vs.	Tonasket	Home
Sun, Feb 4	7:15 PM	Cascade vs.	Manson	Home
Mon, Feb 5	7:15 PM	Cascade vs.	Waterville-Mansfield	Home

Girls Basketball				
Tue, Dec 3	7:30 PM	Cascade vs.	Wenatchee	Away
Thu, Dec 5	6:00 PM	Cascade vs.	Manson	Away
Mon, Dec 9	5:30 PM	Cascade vs.	Moses Lake Christian Academy	Home
Tue, Dec 10	5:45 PM	Cascade vs.	Omak	Away
Fri, Dec 13	6:30 PM	Cascade vs.	Sultan	Away
Fri, Dec 20	5:45 PM	Cascade vs.	Chelan	Away
Sat, Dec 21	3:00 PM	Cascade vs.	Lake Roosevelt	Away
Wed, Jan 3	5:45 PM	Cascade vs.	Cashmere	Away
Sun, Jan 7	5:45 PM	Cascade vs.	Omak	Away
Tue, Jan 9	5:45 PM	Cascade vs.	Easton	Home
Sun, Jan 14	5:45 PM	Cascade vs.	Lake Roosevelt	Home
Tue, Jan 16	5:45 PM	Cascade vs.	Moses Lake	Home
Sun, Jan 21	6:00 PM	Cascade vs.	Liberty Bell	Away
Tue, Jan 23	5:45 PM	Cascade vs.	Chelan	Home
Thu, Jan 25	6:00 PM	Cascade vs.	Entiat	Away
Sun, Jan 28	6:00 PM	Cascade vs.	Bridgeport	Away
Wed, Jan 31	6:00 PM	Cascade vs.	Tonasket	Home
Sun, Feb 4	5:45 PM	Cascade vs.	Manson	Home
Mon, Feb 5	5:45 PM	Cascade vs.	Waterville-Mansfield	Home

Boys Wrestling					
Thu, Dec 5	5:00 PM	Cascade vs.	Cle Elum-Roslyn	Away	CERHS Jamboree
Sat, Dec 7	10:00 AM	Cascade vs.	Omak	Away	THE PIT TOURNAMENT in Omak
Thu, Dec 12	5:00 PM	Cascade vs.	Wapato	Away	
Sat, Dec 14	10:00 AM	Cascade vs.	Cashmere	Away	Cashmere Invitational
Tue, Dec 17	6:00 PM	Cascade vs.	Sultan	Home	
Sat, Dec 28	9:00 AM	Cascade vs.	Clark County Events Center	Away	Royal 50th Annual Men's Christmas Tournament
Thu, Jan 4	10:00 AM	Cascade vs.		Home	The Bavarian Wrestling Tournament
Sun, Jan 7	6:00 PM	Cascade vs.	Omak	Away	
Thu, Jan 11	10:00 AM	Cascade vs.	Warden	Away	Jermiah Schmunk Memorial Tournament
Tue, Jan 16	6:00 PM	Cascade vs.	Chelan	Away	
Thu, Jan 18	10:00 AM	Cascade vs.	Tonasket	Away	Tonasket Apple Pie Tournament
Thu, Jan 25	10:00 AM	Cascade vs.	Quincy	Away	Quincy Mat Animal Boys Tournament
Sun, Jan 28	6:00 PM	Cascade vs.	Cascade	Home	

Girls Wrestling					
Thu, Dec 5	5:00 PM	Cascade vs.	Cle Elum-Roslyn	Away	CERHS Jamboree
Tue, Dec 10	5:00 PM	Cascade vs.	Ephrata	Away	Ephrata Girls Mix & Match
Sat, Dec 21	10:00 AM	Cascade vs.	Lake Roosevelt	Away	2024 Powerhouse Wrestling Tournament
Thu, Jan 18	10:00 AM	Cascade vs.	Tonasket	Away	Tonasket Apple Pie Tournament
Sun, Jan 21	5:00 PM	Cascade vs.	Okanogan	Away	
Thu, Feb 1	10:00 AM	Cascade vs.	Quincy	Away	Cattlemen's Association Bring Home da Beef Girls Tournament

**WENATCHEE WILD**

**TOY DRIVE**

**DRIVE**

**GIVE NCW**

**Tires LES SCHWAB**

**FRIDAY, NOV. 29 \ 7PM**

**TOWN TOYOTA CENTER | DOORS OPEN: 6PM**

**BRING A TOY FOR THE TOY DRIVE AND RECEIVE A TICKET VOUCHER\* FOR A FUTURE GAME!**

**(509)888-PUCK**

**WENATCHEEWILDHOCKEY.COM 7825**

\*You will receive one ticket voucher in exchange for your donation.

**NEVER WORRY ABOUT POWER OUTAGES AGAIN.**

**Gain peace-of-mind with the most powerful line of home standby generators.**

Engineered with **NGMax™** for superior power and performance

When choosing a standby generator, check the specifications closely. Only Briggs & Stratton PowerProtect™ generators feature NGMax™ technology, delivering up to 12% more power on natural gas than the competition. For homes with natural gas, Briggs & Stratton is the ideal choice.

**Industry-Leading Comprehensive Warranty for Years of Worry-Free Performance**

Standard Warranty of **7 YEARS** \$849 Value

**Call 1-877-597-7536**

**BRIGGS & STRATTON ENERGY SOLUTIONS**

**WARD MEDIA**

**'Bringing the community to your door' isn't just our slogan... It's our purpose**

**The Leavenworth Echo | Cashmere Valley Record**

# NCW NEWS

www.ncw.news

Stay in touch... *Holiday Cards* with Magnets!

NORTHWEST SWAG WORKS  
APPAREL & PROMOTIONAL PRODUCTS

Call or email for a free quote! Amy@NorthwestSwag.com | 509-731-3624

## CONNECTING COMMUNITIES ACROSS NORTH CENTRAL WASHINGTON

### Chelan rodeo queen attends Moses Lake Queen Pageant



COURTESY OF CHELAN COUNTY FAIR AND RODEO  
The new 2025 County Fair and Rodeo Queen **Jorja Davenport** (right) attends the Moses Lake Rodeo Queen Pageant to support the newly crowned 2025 Miss Moses Lake Rodeo Roundup **Kaylee Stump** (left).

### Link Transit ridership on record-setting pace

NCW News  
Ward Media

WENATCHEE — Link Transit has surpassed one million passenger boardings for the second straight year, reaching the milestone two months earlier than in 2023. The public transportation system recorded 1,031,139 fixed route boardings through October, already exceeding 2023's year-end total of 1,011,391. Officials project ridership will approach 1.2 million by year's end. The last time Link Transit topped one million riders before 2023 was in 2015. October's weekday ridership averaged 4,360 passengers,

marking a 17% increase from October 2023. Weekend numbers also showed significant growth, with Saturday boardings averaging 2,508, up 18%, and Sunday ridership reaching 1,690, a 20% increase from the previous year. The overall year-over-year comparison shows October 2024 ridership jumped 20.7% from October 2023. The transit system has experienced substantial growth since 2022, with weekday ridership climbing 40% and Saturday service up 36%. Sunday service, introduced in 2020, has seen the most dramatic increase at 60%, evolving from initial averages of 600 daily boardings during

its first six months. "Over the past several years, Link has added a significant amount of service throughout the region. This additional service provides more options for our guests, and it is paying off in increased ridership," said Nick Covey, Link's CEO. "Along with the increase in service, the alignment of many routes has improved so it is easier and more convenient for people to use transit now. People are recognizing the quality of our service, and the ease with which they can make the switch to riding transit." The system now operates 413 hours of service each weekday, connecting communities throughout the Wenatchee/

East Wenatchee area and extending to Chelan/Manson, Waterville, and communities along the Wenatchee River to Leavenworth. Weekend operations run at reduced levels, with 206 hours on Saturdays and 162 hours on Sundays. Overall service hours have increased approximately 18% since 2023. The transit system serves multiple communities in north-central Washington state, providing essential transportation links between residential areas and regional destinations. Detailed ridership data and performance metrics are available on the transit system's website at [www.linktransit.com/kpi](http://www.linktransit.com/kpi).

### Manson company brings high-tech solutions to local agriculture

By Quinn Propst  
Ward Media Staff Reporter

MANSON — A new approach to crop management is taking root in Central Washington as AgHawk Dynamics brings drone technology to local farms, vineyards, and orchards. AgHawk was created on the premise of trying to help turn agriculture upside down in a positive way, owner Chris Dandridge said. The Manson-based company offers aerial application services designed to improve efficiency, reduce costs, and

minimize human exposure to chemicals. "We're so excited to transform how trees, vineyards and fields are managed today to help preserve agricultural legacy in our local community," said Chris Dandridge, owner of AgHawk Dynamics. "Our goal is to empower farmers with better data and insights to make informed decisions about crop performance compared to the traditional methods." When Dandridge and his family moved to Manson about seven years ago, they set to work to revive an old orchard,

creating an oasis for their family. On the other side of the orchard, they are working to grow a small vineyard. "And as we've been going through the process, we've always been kind of thinking, well, there has to be a better way of doing things, you know, a better way of managing the land, the crops, if it were, and a safer way of being able to handle chemicals or types of fertilizer, whatever it is that we're trying to apply, and try to remove some of that human component," he said. Dandridge has a passion for technology and has worked in

the industry for a long time. Observing the challenges of traditional farming methods and inspired by drone technology being used out east, he saw an opportunity to integrate his passion for technology with agriculture. "Our services empower growers and farmers to apply such things as pesticides, fungicides, herbicides, fertilizers and seed in a fraction of the time plus track these applications digitally down to the product, parcel, wind and temperature readings," he said. "This data driven approach and precise and rapid application is what differentiates us from the traditional methods." The company uses a customer-centric approach since every farm is different. "We map out the blocks of property that require various product applications and schedules," Dandridge said. "We then leverage our proprietary technology to build out the entire season." "Customers are always in the know as we deliver these services to avoid any surprises," he said. "We regularly meet with the growers and managers to make sure we meet their expectations and adjust for unforeseen circumstances." With a focus on improving sustainability and providing reliable data, AgHawk Dynamics aims to support local farmers as they adapt to evolving agricultural needs. For more information, visit [aghawkdynamics.com](http://aghawkdynamics.com).

### Former student arrested after threats to Cashmere School District

NCW News  
Ward Media

CASHMERE — Law enforcement officials acted swiftly to apprehend a former student who allegedly made threats of violence against the Cashmere School District, authorities said. The 14-year-old male suspect, who was not identified due to his age, was arrested off campus before school hours on November 19, according to a statement from Chelan County Sheriff Morrison's office. Cashmere School Resource Officer Deputy Mutch received information about the threats early Tuesday morning. Although described as general in nature, the threats were

serious enough to constitute a felony-level offense. The suspect had not been physically attending classes following recent charges in an unrelated sex offense case from approximately one year ago, according to the sheriff's office. The rapid response by law enforcement prevented any disruption to school operations. According to the sheriff's office statement, "Due to the quick response of Deputy Mutch and detectives, they were able to arrest the suspect prior to the students arriving at school. That alleviated the need to lock down any school district buildings." The incident remains under investigation by the Chelan County Sheriff's Office.



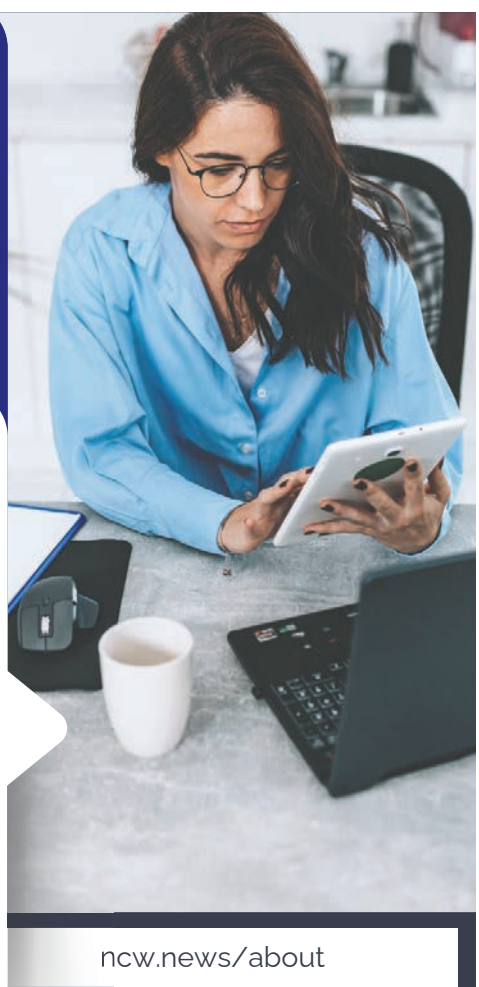
COURTESY OF AGHAWK DYNAMICS  
AgHawk Dynamics utilizes drone technology to apply things such as pesticides, fungicides, herbicides, fertilizers and seed in a fraction of the time for farmers in Central Washington.

Quinn Propst: 509-731-3590 or [quinn@ward.media](mailto:quinn@ward.media).

**WARD MEDIA**  
**WE'RE HIRING**  
MULTI-MEDIA  
ACCOUNT EXECUTIVE

- Prospect and develop new business opportunities
- Consult with clients to understand their business objectives
- Create tailored multimedia advertising solutions
- Provide excellent after-sales service and maintain strong client relationships

LEARN MORE >>> [amy@ward.media](mailto:amy@ward.media)



NORTHWEST SWAG WORKS  
APPAREL & PROMOTIONAL PRODUCTS

Prepare your brand for the *Holidays*

YOUR LOGO HERE

www.northwestswag.com • 509-731-3624

CONNECTING COMMUNITIES ACROSS NORTH CENTRAL WASHINGTON

North Central Education Foundation receives Wheatland Bank grant to fund teacher programs



COURTESY OF NORTH CENTRAL EDUCATION FOUNDATION

Josh Stendera, Executive Vice President, Regional Chief Banking Officer from Wheatland Bank presents a \$10,000 check to NCEF President Lois Davies.

NCW News Ward Media

WENATCHEE — The North Central Education Foundation (NCEF) has received a contribution from Wheatland Bank to support its Teacher Classroom Grant Program...

for the new partnership: "With much gratitude, we thank Wheatland Bank for their generous support. They have already proven to have a strong sense of caring towards education in our community.

The foundation's community support extends beyond Wheatland Bank, with additional backing from Confluence Health, the Woods Family Music and Arts Fund, the Community Foundation of North Central Washington, local Rotary organizations, and regional service organizations.

The donation will help fund classroom innovation projects across four counties as the foundation marks its 15th year of providing grants to teachers in Chelan, Douglas, Grant, and Okanogan Counties.

"It's exciting to have Wheatland Bank join us in continuing to support creative teachers who are bringing hands-on learning to their classrooms," said Foundation Treasurer Ray Dobbs.

The foundation's grant program awarded funding to 225 teachers this year. The grants, averaging \$300, support multiple educational areas including arts and music, literacy, STEM, cultural awareness, history, social studies, social-emotional wellness, environmental education, and financial education.

NCEF Vice-President Jeff Kimbell expressed gratitude

North Central Education Foundation awards record 225 Teacher Grants

NCW News Ward Media

WENATCHEE — The North Central Education Foundation announced a record-breaking distribution of classroom grants to 225 teachers across four Washington counties, marking the largest number of awards in the foundation's 15-year history.

The grants, awarded to educators in Chelan, Douglas, Grant and Okanogan Counties, span multiple categories including cultural awareness, financial education, social studies, wellness, literacy, arts, and STEM programs. The initiative received support from numerous community organizations, businesses, and private donors.

This year's program emphasized collaborative

projects, with 41 grants awarded to teams of two or more teachers. However, due to limited resources, 49 applications representing 85 teachers went unfunded.

"I believe adopting a teacher grant is a wonderful and cost-effective way to support our region's students and schools in a more personal manner, by connecting with a specific teacher and grant request," said NCEF Board member Jeff Kimbell.

The foundation reported that teachers from 23 of the 29 school districts within the North Central Educational Service District region received grants, including educators from private and charter schools.

Major funding partners included Wheatland Bank, North Central ESD, Woods

Family Music & Arts Fund, Confluence Health, Community Foundation of NCW, and various local Rotary clubs. The grants aim to address classroom needs that teachers often fund out of pocket.

Unfunded grant applications remain available for adoption through the foundation's website at www.loveteachers.org.

The program distributed funds across seven categories, with dedicated support for specific subjects. The Cultural Awareness grants were funded by Lake Chelan Rotary and Confluence Rotary, while the Consumer Jungle supported Financial Education initiatives. Environmental and geology projects received backing from Friends of Lower Grand Coulee, and various community organizations funded wellness, literacy, arts,

and STEM programs. Among the recipients from area schools were:

BRIDGEPORT:

- Julie Cain for assets of multilingual learners
Lorena Lopez for a student store project
Shelby Miller-Poole for HOSA Club practice equipment
Lisa Cutuli for music foundations program
BREWSTER:
Jackie Hentges and Karissa Reese for the Living Garden Lab and Growing Minds Greenhouse projects

CASCADE:

- Malia Renner-Singer for financial aid and scholarship organization
Tim Barnes for wellness supplies
Lindsay Camp for community connections classroom project

See GRANTS Page A7

BUSINESS & SERVICE DIRECTORY

Complete Excavating Service
Power & Water Systems
Dump Truck & Dozer
Drainfield Repair
Free Estimates
Septic Systems
Road Grading
Upper Valley EXCAVATING
(509) 548-3489
Leavenworth, WA
Licensed - Bonded - Insured

Tumwater Drilling and Pump Inc.
Water Treatment Systems Built to Your Individual Problem
Free Water Analysis/Estimates
Tumwater Drilling & Pump, Inc.
509-548-5361
www.tumwaterdrilling.com

SAVE OVER 42% NOW \$27.99
Hale GROVES
Holiday Fruit Assortment
CALL 844-622-8059 OR VISIT HALEGROVES.COM/H5YN57

LeafFilter GUTTER PROTECTION
CALL TODAY FOR A FREE INSPECTION! 1-888-360-1582
20% OFF + 10% OFF
Your Entire Purchase\* Seniors + Military
Promo: 285

SkiLink provides free transportation to Mission Ridge

NCW News Ward Media

WENATCHEE — A free transportation service for winter sports enthusiasts heading to Mission Ridge Ski and Board Resort launched on November 23, coinciding with the resort's opening day for the season.

located at the intersection of Methow Street and Crawford, across from Lincoln Park Baptist Church on Crawford Street, and at Mission Street and Parkway. The service will operate weekends only through December 16 before expanding to daily operations from December 17 through December 31, except for Christmas Day.

The SkiLink shuttle service will operate six round trips on weekends, departing from Columbia Station at 6:55, 8:15, 9:35, and 11:00 a.m., with afternoon departures at 12:45, 2:15, and 3:45 p.m. The service includes stops at Lincoln Park approximately seven minutes after each Columbia Station departure.

All skiers and snowboarders may ride SkiLink for no cost.

Riders have multiple parking options available. While Columbia Station offers limited parking, additional lots are

Passengers seeking additional information about routes and schedules can contact Link Transit at 509-662-1155 or visit www.linktransit.com/skilink.

BOGO 40% OFF
+ \$200 OFF Your Entire Purchase
RENEWAL by ANDERSEN
844-239-3248

ADD YOUR BUSINESS OR SERVICE TO THIS DIRECTORY:
509-731-3321

Be prepared before the next power outage.
It's not just a generator. It's a power move.
GENERAC

Consumer Cellular
BIG WIRELESS COVERAGE, WITHOUT BIG WIRELESS COST.
Plans start at just \$20/month.
Switch & Save Today. 855-854-4608

UPPER VALLEY CHURCH GUIDE To Place Information in The Church Guide Call 509-548-5286

Leavenworth
CASCADIA MOUNTAIN BIBLE CHURCH
LEAVENWORTH COMMUNITY UNITED METHODIST CHURCH
CHURCH OF JESUS CHRIST OF LATTER-DAY SAINTS
FAITH LUTHERAN CHURCH - ELCA
FIRST BAPTIST CHURCH OF LEAVENWORTH, SBC
LEAVENWORTH CHURCH OF THE NAZARENE

SEVENTH DAY ADVENTIST CHURCH
SPIRIT LIFE CENTER
Dryden
DRYDEN COMMUNITY CHURCH
MID-VALLEY BAPTIST CHURCH
Peshastin
LIGHT IN THE VALLEY COMMUNITY CHURCH
NEW LIFE FOURSQUARE CHURCH

Plain
PLAIN COMMUNITY CHURCH
Cashmere
CASHMERE PRESBYTERIAN CHURCH
CASHMERE COMMUNITY CHURCH
CHRIST CENTER
ST. JAMES EPISCOPAL CHURCH
Monitor
UNITED METHODIST CHURCH

# Boeing layoffs will include nearly 2,200 workers in Washington

The company warned last month that job cuts were coming company-wide.

**By BILL LUCIA**  
*Washington State Standard*

Boeing's planned job cuts will include 2,199 layoffs in Washington, according to a notice issued last week by the state's Employment Security Department.

The Society of Professional Engineering Employees in Aerospace, a union that represents engineers, scientists, technical workers and pilots, said the company told them that 438 of their members received layoff

notices last week. "That's about 2.5% of our total membership at Boeing," Bryan Corliss, a spokesperson for the union, said in an email. Those affected in Washington include 218 SPEEA members of the union's professional unit, which is made up of engineers and scientists, and 220 of the technical unit, which covers analysts, planners, and technicians, Corliss said.

SPEEA represents about 17,000 workers at Boeing in Washington, Oregon, California and Utah. Boeing has about 66,000 employees in Washington. "We're not breaking down the types of workers

or by geography/facility," Bobbie Egan, a company spokesperson, said in an emailed response to questions asking for more details about the job cuts. "The layoffs are across Boeing."

The company announced in early October it would cut about 17,000 employees, 10% of its workforce. Boeing has previously indicated that the cuts would be company-wide and would involve executives, managers and other employees.

Under a new CEO, Kelly Ortberg, the company is trying to regain its financial footing. Last month, Boeing reported a \$6 billion quarterly loss and it has piled up billions in debt.

Deadly airliner crashes in 2018 and 2019 and an incident earlier this year where a door panel blew out of a plane led to scrutiny of the company's safety culture. Meanwhile, a program to manufacture the 777X passenger plane, made in Everett, is years behind schedule.

Layoff notices are going out in the wake of a strike by about 33,000 Boeing aircraft machinists in the Puget Sound region and other West Coast states that lasted nearly two months.

Members of the International Association of Machinists and Aerospace Workers voted to approve a contract Nov. 4, ending the strike. Union

members were due back at work by Nov. 12.

A spokesperson for IAM 751, which represents Boeing machinists in Washington, said Monday that the union did not have any information about layoffs affecting its members and directed questions to the company.

Boeing's workforce reductions include layoffs, leaving unfilled jobs open, and concentrating backfill hiring on positions tied to "business-critical priorities," the company has said.

In a statement shared Monday, the company reiterated that it is "adjusting our workforce levels to align with our financial reality and a

more focused set of priorities. We are committed to ensuring our employees have support during this challenging time."

Boeing said most employees who were notified in recent days that they would be laid off will exit the company in mid-January. The company also said workers will receive severance pay, career transition services, and subsidized health care benefits for up to three months after leaving.  
*Washington State Standard (www.washingtonstatestandard.com) is part of States Newsroom, a nonprofit news network supported by grants and a coalition of donors as a 501c(3) public charity.*

# Same-day voter registrations hit new high mark in Washington

**By LAUREL DEMKOVICH**  
*Washington State Standard*

OLYMPIA - Long lines on Election Day aren't common in Washington with the state's vote-by-mail system.

But this year, some counties were inundated with people taking advantage of a relatively new same-day registration system.

Pierce County, for example, had hundreds of voters in line throughout Election Day. Traffic remained heavy all day at the county elections office and a drop box located there. Snohomish County's election office had a steady stream of people looking to register or change addresses. Many other counties, like Clark, had people joining the lines at election offices up until the 8 p.m. voting deadline.

Washington is one of 23 states that allow same-day registration, and this election, more voters than ever took advantage of it.

About 13,400 new registrations were submitted on Election Day this year, according to the secretary of state's office. Another

15,600 voters updated their registrations with things like address changes on the day of the election.

That's compared to 10,300 new registrations and 7,500 registration updates on Election Day in 2020.

Washington's same-day registrations have grown by "leaps and bounds" in the last four years, said Greg Tito, spokesperson at the secretary of state's office.

The Legislature first approved same-day voter registration in 2018. Before that law passed, voters could only complete in-person registration changes up until eight days before an election and mail-in registration changes no later than 29 days before an election.

Under the new law, voters have until 8 p.m. on Election Day to visit a county election office to register and receive a ballot, which they can complete onsite. Voters can also update their registration and receive a ballot in person throughout the day of the election. They also have until eight days before an election to update their registration by mail.

The 2019 primary was the first election where this new system was in place, and the number of voters using it has grown significantly every election since. Between 2019 and this year's state primary, nearly 400,000 people updated their registration in the eight days before Election Day, a period when they previously would've been blocked from making changes.

Despite the increase in same-day registrations, however, overall voter turnout remained lower this year compared to some recent presidential elections.

As of Monday morning, state figures showed that 79.5% of Washington's more than 5 million voters returned their ballots for this year's general election.

That's still on track to meet election officials' estimates of 80% turnout this year, and it's comparable to the 2016 general election when 78.8% of voters participated.

Still, this year's turnout is lower than other presidential elections in the last two decades.

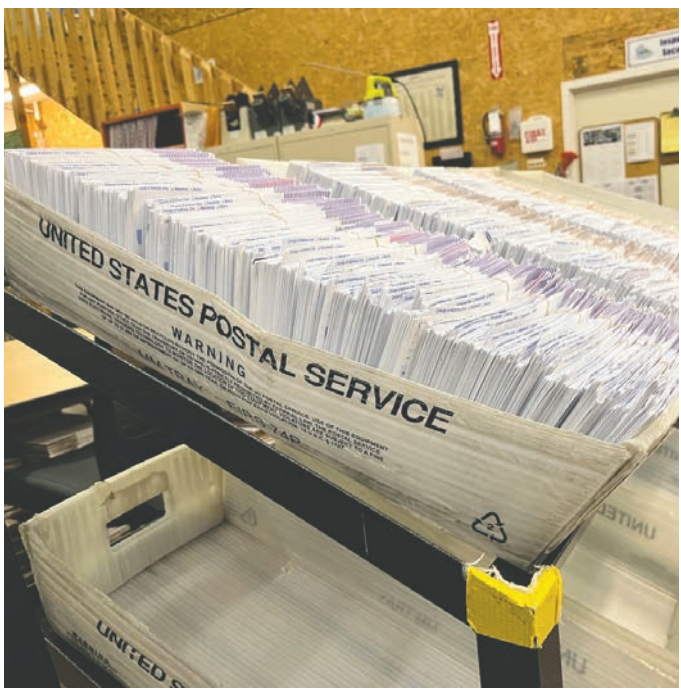
Both 2020 and 2008 were record highs for turnout in

Washington, at around 84% each. In 2012, about 81.3% of eligible residents voted, and in 2004, about 82% voted.

Counties that saw particularly low turnout this year were Adams, Yakima and Franklin counties. In Adams County, only 66.6% of registered residents voted. In Yakima County, only 67.7% of people voted, and in Franklin, just over 70.5% of people voted.

Jefferson, San Juan, Wahkiakum and Kittitas counties had some of the highest voter turnout in the state, all with more than 85% voter participation.

*Washington State Standard (www.washingtonstatestandard.com) is part of States Newsroom, a nonprofit news network supported by grants and a coalition of donors as a 501c(3) public charity.*



LAUREL DEMKOVICH/WASHINGTON STATE STANDARD  
Ballot envelopes sit in the Thurston County elections center.

# Mount Rainier National Park announces 2025 construction projects

**Construction will temporarily close a section of State Route 123 along the park's eastern boundary and the Ohanapeosh Campground in the southeast corner of the park**

*NCW NEWS Ward Media*

ASHFORD - Two major Mount Rainier National Park construction projects starting in 2025 will replace decades-old crumbling infrastructure in the park's popular Ohanapeosh Campground and improve travel through the park on State Route 123.

Both projects address important deficiencies and will improve the visitor experience once completed. However, construction activities will cause temporary roadway and/or facilities closures.

The Ohanapeosh Campground rehabilitation project will provide significant upgrades to the popular campground located in the southeast corner of the park. This effort will rehabilitate the campground's 185 campsites and nine bathrooms, replace the aging wastewater collection system, upgrade electrical and water systems, and support improvements to campground accessibility.

The project will be completed during the 2025 visitor season. The Ohanapeosh Campground and all associated structures including the visitor center, bathrooms, picnic area and auditorium will remain closed to visitors for the duration of construction. However, the improved campground will reopen to visitors in time for

the 2026 camping season.

Visitors who wish to camp in the park during the summer 2025 camping season will still have access to both the White River Campground and Cougar Rock Campground.

The Ohanapeosh Campground project is partly funded through the Great American Outdoors Act (GAOA), Recreation Fee revenue and the National Park Foundation. GAOA is historic bipartisan legislation that expands equitable and accessible recreational opportunities and addresses long overdue infrastructure improvement and modernization needs on public lands managed by the National Park Service, the U.S. Fish and Wildlife Service, the Bureau of Land Management and Bureau of Indian Education schools. The funding is reducing the maintenance and repair backlog, protecting critical resources, expanding recreational opportunities, and promoting long-term sustainable operations.

The State Route 123 construction project is a two-year effort that will rehabilitate a 2.8-mile section of roadway between Laughingwater Creek and Panther Creek along the park's eastern boundary. This project is funded through the Federal Highways Administration.

**Construction impacts are projected to be as follows:**

- Construction Year One (2025)
- A 2.8-mile section of roadway will be under construction April-October 2025. Travelers will experience delays of up to 30 minutes.

- A full road closure of a portion of the roadway between Stevens Canyon Road and Panther Creek will take place September 2-30, 2025. The roadway will be bisected to install two large box culverts which will be more resilient during high flows and flooding reducing risk of road washouts and costly repairs and also annual maintenance needs. They should also improve habitat for amphibians and fish.
- There will be no vehicle, pedestrian or bicycling access through the construction zone during this one-month culvert replacement project.
- Construction Year Two (2026)
- A 2.8-mile section of roadway will be under construction April-October 2026. Travelers will experience delays of up to 30 minutes.
- There will be no full closures of the roadway during the 2026 construction season.

"We are grateful to have the opportunity to make much-needed improvements to the Ohanapeosh Campground and State Route 123," stated Superintendent Greg Dudgeon. "There will be some temporary inconveniences next year, but we know that this critical investment in our facilities will help ensure recreational opportunities for visitors for decades to come."

*Information about both construction projects will be posted on the park's website in spring 2025 prior to the start of construction. For general information about Mount Rainier National Park, please visit www.nps.gov/mora.*

**The Holidays** AT ICICLE CREEK

**DECEMBER 6TH & 7TH 7:30PM**  
**Candlelight Messiah**

**DECEMBER 12TH & 13TH 7:30PM**  
**The Gothard Sisters**

**DECEMBER 19TH & 20TH 7:30PM**  
**Magical Strings**

FOR TICKETS & MORE VISIT  
**ICICLE.ORG**  
7409 ICICLE RD. LEAVENWORTH

ICICLE CREEK CENTER FOR THE ARTS

**WHEN YOU WANT THE BEST**

**YOU WANT OMAHA STEAKS**

When you want to experience a steak that delivers rich, juicy, exquisite flavor and unparalleled quality in every bite, you don't want just any steak. You want Omaha Steaks.

THE BEST STEAKS OF YOUR LIFE OR YOUR MONEY BACK

100% GUARANTEE

AMERICA'S ORIGINAL BUTCHER  
**OMAHA STEAKS**  
SINCE 1917

**Butcher's Deluxe Package**

- 4 Butcher's Cut Top Sirloins (5 oz.)
- 4 Air-Chilled Boneless Chicken Breasts (4 oz.)
- 4 Boneless Pork Chops (5 oz.)
- 4 Individual Scalloped Potatoes (3.8 oz.)
- 4 Caramel Apple Tartlets (4 oz.)
- 1 Omaha Steaks Seasoning (3 oz.)
- 8 FREE PureGround™ Filet Mignon Burgers (6 oz.)

77318FYG separately \$224.94 **\$99.99**  
**SPECIAL INTRODUCTORY PRICE**

**8 FREE BURGERS (A \$37 VALUE)**

Order Now! » **OmahaSteaks.com/Deluxe9858** | 1.888.769.2092  
Ask for your 8 FREE burgers with offer 77318FYG

Savings shown over aggregated single item base price. 8 free 6 oz. burgers will be sent to each shipping address that includes SKU 77318. Limit 2 on select items at these exclusive prices. While supplies last. Items may be substituted due to inventory limitations. Standard shipping rates will be applied and are subject to change. Minimum purchase and other restrictions may apply. Some products may not be available for sale in your area. Sales are subject to OmahaSteaks.com/terms-of-use-01. Expires 12/31/24. | 24M6729 | Omaha Steaks, LLC

- Grants**
- Continued from page A6*
- Michelle Forster for sports medicine training
  - Shanda Holm for literature transformation project
  - Darryl & Mindy Wall for choir music library
  - Amber Zimmerman for music and art performance
  - Heidi Flake for science writing program
- CASHMERE:**
- Julianna Herrington for classroom movement
  - Heidi Hill for SEL drama production
  - Lena Flagel for reading fluency
  - Beth Brown for elements

- of art
  - Chelsey Diamond for STEM grab boxes
- ENTIAT:**
- Tari Stonecipehr for reading P.E. synergy
  - Stacy Mitchell for daily STEM exploration
  - Lauren Tewell for animal and insect housing
- LAKE CHELAN:**
- Amber Finch for learning games
  - Nesha Bremmeyer for Hope Week
  - Lizbeth Lopez-Vasquez for calm corner
  - Chelsey Martin for vocabulary development
  - Meghan Perry for tactile

- learning
  - Jennifer Polley for books program
  - Madonna Konshuk-Carlton for shoe box task boxes
  - Nels Lund for fungi futures exploration
- MANSON:**
- Ann Wisdom for EDUCATE program
  - Kendra Ellsworth for brain bins and science supplies
  - Rosanna Pittman for STEM brain bins
  - Janine Sanborn for brain bins
- PATEROS:**
- Talicia Miller-Poole for collaboration games
  - Amy Stennes for calming corner



# CLASSIFIEDS

Email your Classifieds & Legal Notices to: [classifieds@ward.media](mailto:classifieds@ward.media) or call 509-293-6780

Leavenworth Echo  
Cashmere Valley Record  
Lake Chelan Mirror  
Quad City Herald

**PUBLISHER'S NOTICE**  
All real estate advertising in this newspaper is subject to the Fair Housing Act, which makes it illegal to advertise "any preference, limitation or discrimination based on race, color, religion, sex, handicap, familial status or national origin, or an intention to make any such preference, limitation or discrimination." This newspaper will not knowingly accept any advertising for real estate that is in violation of the law. To complain of discrimination call HUD at 1-800-669-9777. The number for hearing impaired is 1-800-927-9275.

CORRECTIONS: Ward Media LLC shall be responsible for corrections to advertisements on the first publication only. The advertiser will be responsible for the corrections made thereafter. Ward Media LLC shall not be responsible for slight changes or typographical errors that do no less than the value of the advertisement. Ward Media LLC's liability for other errors or omissions in connection with an advertisement is strictly limited to the publication of the advertisements in any subsequent issue. No monetary refunds will be given. For more information call 509-548-5286.



## Announcements

### Miscellaneous

**We Buy Houses for Cash AS IS!**  
No repairs. No fuss. Any condition.  
Easy three step process: Call, get cash offer and get paid.  
Get your fair cash offer today by calling Liz Buys Houses: 1-888-720-3848

**ELIMINATE GUTTER CLEANING FOREVER!**  
LeafFilter, the most advanced debris-blocking gutter protection. Schedule a FREE LeafFilter estimate today. 20% off Entire Purchase. 10% Senior & amp; Military Discounts. Call 1-888-360-1582.

**We buy 8,000 cars a week.**  
Sell your old, busted or junk car with no hoops, haggles or headaches. Sell your car to Peddle. Easy three step process. Instant offer. Free pickup. Fast payment. Call 1-888-684-5494

**Prepare for power outages with Briggs & Stratton; PowerProtect(TM)** standby generators - the most powerful home standby generators available. Industry-leading comprehensive warranty - 7 years (\$849 value.) Proudly made in the U.S.A. Call Briggs & Stratton 1-888-358-4047.

## General Interest

**Methow Green Clean**  
Eco-friendly cleaning for homes, offices, and construction sites. We organize too! 20% off your first service. Call 509-557-2690 or visit [methowgreenclean.com](http://methowgreenclean.com)

**Conflict Resolution**  
509 521 6441  
NCW Mediation  
Chelan & Manson



## Employment

### Help Wanted

**Hospitality Specialist (Enzian Inc. Leavenworth, Wa)**  
We are seeking dedicated and customer focused Hospitality Specialists to join our team.  
Flexibility to work weekends, Evenings, and Holidays as required.  
Wages starting at \$18.00 to \$20.00 per Hour:  
Paid time off:  
Health Insurance  
Email Resume and Cover letter to: [cindy@enzianinn.com](mailto:cindy@enzianinn.com)



The City of Leavenworth is hiring for:

- City Engineer
- Facility Maintenance Worker
- Wastewater Treatment Plant Supervisor

Details at [cityofleavenworth.com/employment/](http://cityofleavenworth.com/employment/). EOE

**Bus Driver/Operator – Full Time**  
**Organization: Okanogan County Transit Authority (TranGO)**  
TranGO IS HIRING A DRIVER:  
Full-time (36+ hours per week) position available now:  
hourly non-exempt.  
Compensation is \$21.64-\$23.41 per hour.  
DOE. Benefits include health, dental, vision, life insurance, retirement (see website for benefit details), sick leave, and vacation. Must have a Commercial Driver's License with Passenger Endorsement.  
Please visit [www.okanogantransit.com](http://www.okanogantransit.com) for required qualifications, application, and job description.  
A complete application including a resume and cover letter must be submitted in order to be considered for a position. E-mail your completed application to [financehr@okanogantransit.com](mailto:financehr@okanogantransit.com) mail it to TranGO.  
PO Box 507, Okanogan WA 98840, or drop it off at 303 S 2nd Avenue, S. Suite A, Okanogan.  
Application Deadline: Application review will continue until the position is filled.  
Okanogan County Transit Authority is an Equal Opportunity Employer.

## Real Estate

### Homes Wanted

**Greetings, fellow Chelan County residents and beyond!**  
This is a search to purchase a first-time home in a place that has nurtured me since childhood, with generational roots extending deep into this valley's rich history. I want to invest in a place of my own and continue contributing to the community I cherish. I am simply taking "a leap of faith" by posting this ad to open doors that otherwise might remain closed. Maybe for the best intentions, this will catch someone's eye, maybe someone who's starting a new chapter in life and would like to pass on an opportunity or foster a connection beyond the mere exchange of finances. I'm searching for a "unicorn," ideally a place outside the city proper (Wenatchee, Cashmere, Leavenworth, Peshastin/Dryden, Plain), surrounded by nature. A space offering at least 1-2 acres of land to cultivate a more sustainable living with a single-family home, minimum of one bathroom and two bedrooms. Additional space is a plus that provides an environment for a creative space or business practice. Ultimately, I am patient in waiting for the right time, fit, and price, as the purpose of this venture is to acquire a long-term home. In financial and purchasing preparedness, I have already established relationships with a local loan lender (approved for a 30-year conventional loan) and a real estate agent. An excellent credit score, low debt-to-income ratio, and funds for a down deposit. I understand the value of honoring and building upon the legacy that encompasses a beloved home or property. If a space you know of sounds like a possible match, please reach out to further connect. For privacy & protection from scams/misplaced intentions, I can be contacted via email at [pnwholisticsoul@gmail.com](mailto:pnwholisticsoul@gmail.com). Thank you & warmest regards.  
A hopeful first-time home buyer

## Rentals

**MOUNTAIN VALLEY ADULT TRAILER PARK Brewster, Washington**  
Trailer For Rent  
References are a must  
First, Last and Deposit Required  
Non Smoker (509) 686-7037  
Ask for Doreen

**Windermere Real Estate/NCW**  
Leavenworth/Lake Wenatchee Specialists

**Looking for real estate in the Upper Valley? Give us a call today!**

See all available properties at [windermereleavenworth.com](http://windermereleavenworth.com)

**Robyn Bodajla - 617-462-3402**  
**Momi Palmieri - 509-433-2211**  
**Geordie Romer - 509-679-8958**  
**Allyson Romer - 509-630-9898**  
**Baily Brown - 425- 407-2692**

## Legals

### Public Notices

**IN THE SUPERIOR COURT OF THE STATE OF WASHINGTON IN AND FOR THE COUNTY OF CHELAN**  
In the Matter of the Estate of CLARENCE G. SPENCE III, Deceased.  
No.24-4-00394-04  
**PROBATE NOTICE TO CREDITORS**  
RCW 11.40.030

The personal representatives named below have been appointed as personal representatives of this estate. Any person having a claim against the decedent must, before the time the claim would be barred by any otherwise applicable statute of limitations, present the claim in the manner as provided in RCW 11.40.070 by serving on or mailing to the personal representatives' attorney at the address stated below a copy of the claim and filing the original of the claim with the court. The claim must be presented within the later of (1) Thirty days after the personal representative served or mailed the notice to the creditor as provided under RCW 11.40.020(3); or (2) four months after the date of first publication of the notice. If the claim is not presented within this time frame, the claim is forever barred, except as otherwise provided in RCW 11.40.051 and 11.40.060. This bar is effective as to claims against both the decedent's probate and nonprobate assets.  
Date of first publication: November 20, 2024  
Date of Filing: October 15, 2024  
Personal Representative: Tina Marie O'Neill  
Attorney for Personal Representatives: Byron J. Moore  
Address for Mailing or Service: Byron J. Moore  
Moore Law Firm, PLLC  
9116 E Sprague Avenue, #1022  
Spokane Valley, WA 99206  
Attorney for Estate: /S/ Byron J. Moore  
Byron J. Moore, Ph.D., WSBA #43624  
Published in the Cashmere Valley Record/Leavenworth Echo on November 20, 27, December 4, 2024. #8907

## Public Notices

### IN THE SUPERIOR COURT OF THE STATE OF WASHINGTON IN AND FOR THE COUNTY OF CHELAN

In the Matter of the Estate of JAMES BLAKE SMELLEY Deceased.  
No. 24-4-00345-04  
**PROBATE NOTICE TO CREDITORS**  
RCW 11.40.030

The personal representatives named below have been appointed as personal representatives of this estate. Any person having a claim against the decedent must, before the time the claim would be barred by any otherwise applicable statute of limitations, present the claim in the manner as provided in RCW 11.40.070 by serving on or mailing to the personal representatives' or the personal representatives' attorney at the address stated below a copy of the claim and filing the original of the claim with the court. The claim must be presented within the later of (1) Thirty days after the personal representative served or mailed the notice to the creditor as provided under RCW 11.40.020(3); or (2) four months after the date of first publication of the notice. If the claim is not presented within this time frame, the claim is forever barred, except as otherwise provided in RCW 11.40.051 and 11.40.060. This bar is effective as to claims against both the decedent's probate and nonprobate assets.  
Date of first publication: November 20, 2024  
Date of Filing: September 6, 2024  
Personal Representative: Mary Edith McInnis  
Attorney for Personal Representatives: Byron J. Moore  
Address for Mailing or Service: Byron J. Moore  
Moore Law Firm, PLLC  
9116 E Sprague Avenue, #1022  
Spokane Valley, WA 99206  
Attorney for Estate: /S/ Byron J. Moore  
Byron J. Moore, Ph.D., WSBA #43624  
Published in the Cashmere Valley Record/Leavenworth Echo on November 20, 27, December 4, 2024. #8906

## Public Notices

### City of Leavenworth Request for 2025 Comprehensive Plan Amendment (Docket) Proposals

The City of Leavenworth is entering into the annual Comprehensive Plan (20-year visioning document) amendment cycle and is requesting community input for ideas, suggestions and proposals regarding amendments, including changes to the Land Use Designation Map. Amendments will be finalized and addressed in the 2025 Planning Commission Docket. For an amendment to be considered for sponsorship by the City Council, submittal is due by December 31, 2024. Additionally, individuals may request privately sponsored amendments when submitted by January 31, 2025. Suggested amendments, applications and/or questions may be sent to Community Development, phone (509) 548-5275, e-mail at [mboles@cityofleavenworth.com](mailto:mboles@cityofleavenworth.com), or mail City of Leavenworth, P.O. Box 287, Leavenworth, WA 98826. Published in the Leavenworth Echo/Cashmere Valley Record on October 30, November 6, 13, 20, 27, December 4, 11, 18, 2024 #8786

## Public Notices

### SUPERIOR COURT OF WASHINGTON FOR CHELAN COUNTY

In the Matter of the Estate of JAMES FRANKLIN COGGINS, SR  
Deceased (March 22, 2024).  
No. 24-4-00415-04  
**PROBATE NOTICE TO CREDITORS**  
(RCW 11.40.030)

The Personal Representative named below has been appointed as Personal Representative of this estate. Any person having a claim against the decedent must, before the time the claim would be barred by any otherwise applicable statute of limitations, present the claim in the manner as provided in RCW 11.40.070 by serving on or mailing to the Personal Representative's Resident Agent who is also the Personal Representative's attorney at the address stated below a copy of the claim and filing the original of the claim with the court in which the probate proceedings were commenced. The claim must be presented within the later of: (1) Thirty days after the personal representative served or mailed the notice to the creditor as provided under RCW 11.40.020(1)(c); or (2) four months after the date of first publication of the notice. If the claim is not presented within this time frame, the claim is forever barred, except as otherwise provided in RCW 11.40.051 and 11.40.060. This bar is effective as to claims against both the decedent's probate and nonprobate assets.  
DATE OF FIRST PUBLICATION: November 13, 2024; Personal Representative: James F. Coggins, II; Attorneys for the Personal Representative: Rani K. Sampson, WSBA# 37486; Resident Agent for the Estate: Rani K. Sampson; Address for Mailing or Service – Overcast Law Offices: Attn: Rani K. Sampson; 23 S Wenatchee Ave, Suite 320; Wenatchee, WA; 98801; (509) 663-5588 extension 108; Court of probate proceeding and cause number: Chelan County Superior Court; Cause Number: 24-4-00415-04; Presented by: Overcast Law Offices-ncw, pllc; By: Rani K. Sampson, WSBA No. 37486; Attorneys for the Personal Representative  
Published in the Leavenworth Echo / Cashmere Valley Record on November 13, 20, 27, 2024. #8877

## Public Notices

### NOTICE OF CITY COUNCIL HEARING

NOTICE IS HEREBY GIVEN that the Leavenworth City Council will hold a public hearing for the Local Project Review Act. The hearing will be on December 10, 2024 at 7:00 PM in the City Hall Council Chambers, 700 Highway 2, Leavenworth, Washington and via Zoom (<https://cityofleavenworth.com/your-city-hall/calendar/>). Interested citizens are encouraged to comment and/or attend the public hearing. Questions may be directed to Community Development Director, Maggie Boles at City Hall, phone 509-548-5275 or email [mboles@cityofleavenworth.com](mailto:mboles@cityofleavenworth.com). Published in the Leavenworth Echo/Cashmere Valley Record on November 27, 2024. #8980

## Public Notices

### Bid Advertisement

**Leavenworth Winter Sports Club (LWSC)** is soliciting bids for Ski Hill Restroom Project located on Ski Hill Drive north of the Leavenworth City Limits. The bid documents, including plans and specifications, are available at PNW Plan Center ([pnwplancenter.com](http://pnwplancenter.com)) in Wenatchee, Washington. There are two bid packages for the Ski Hill Project to be bid during the month of November 2024: C-02r Concrete Work, and C-03r Building Construction Contract. **THIS Bid Package soliciting now is Building Construction C-03r** If you are a member of PNW Plan Center, login using your standard login and if you are not a member then login as follows:  
ID: **jhenri**  
Password: **LSH1024pc** (I suggest you copy and paste the password) There will be a **NON-Mandatory pre-bid Site Walk** for this bid package on **Tuesday, November 26, 2024**, at the site at 11:00 am. Bids will be received until **2:00 PM on Thursday December 6, 2024**, by Leavenworth Winter Sports Club. All bids shall be binding for 30 days thereafter.  
**Bids will be publicly opened at the Ski Hill Lodge** immediately following receipt of the bids. Bidders requesting additional information during the bid period are requested to address their inquiries to **James Munly (509) 860-2177**. Published in the Leavenworth Echo, Cashmere Valley Record, and Lake Chelan Mirror on November 27, December 4, 2024. #8941

## Public Notices

### Upper Valley Park & Recreation Service Area

On the 14th day of November 2024, the Board of the Upper Valley Park & Recreation Service Area passed the following budget resolutions. A summary of the contents of each provides as follows: Resolution 3-2024: A Resolution authorizing the regular property tax levy plus 1% increase and is authorized for the levy to be collected in 2025; Resolution 4-2024: A resolution adopting a budget for 2025 and providing for other matters properly relating thereto. A copy of the full text of the resolutions are available at Leavenworth City Hall or will be mailed to you upon your request to Krystal Whitehall -PRSA Clerk, City of Leavenworth, PO Box 287, Leavenworth, WA 98826. Published in the Leavenworth Echo/Cashmere Valley Record on November 27, 2024. #8950

**NCW NEWS**

Discover the heart of North Central Washington with NCW News – your premier source for local stories, insights, and community updates.

Stay informed, stay connected. <https://ncw.news/>

Like us on **facebook**

**NCW News Network**  
**Leavenworth Echo**

**Cashmere Valley Record**  
**Lake Chelan Mirror**  
**Quad City Herald**









# Kid Scoop

THE AWARD-WINNING PRINT & ONLINE FAMILY FEATURE

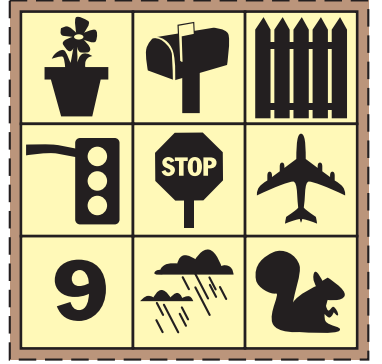
Get puzzle answers, recipes and more at [www.kidscoop.com](http://www.kidscoop.com)

© 2024 by Vicki Whiting, Editor Jeff Schinkel, Graphics Vol. 40, No. 52



## After Dinner Bingo

After dinner, take a stroll around your neighborhood with friends or family members. On this walk, each of you take one of the cards below and cross out items as you see them. First one to black out the card wins!



Standards Links: Investigation: Record information about the living world.

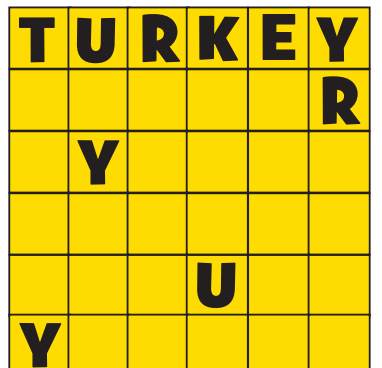
## FREE DOWNLOAD: KID SCOOP TEACHER ACTIVITY PACK!

With hundreds of topics, every Kid Scoop® printable activity pack features six-to-seven pages of high-interest extra learning activities for home and school! Get your free sample today at:

[kidscoop.com/activity-pages/](http://kidscoop.com/activity-pages/)

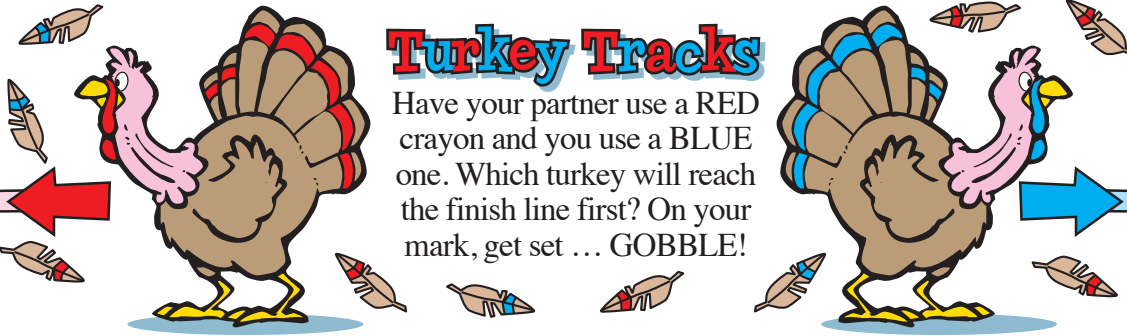
## Kid Scoop-doku™

Complete the grid by using all the letters in the word **TURKEY** in each vertical and horizontal row. Each letter should only be used once in each row. Some spaces have been filled in for you.



**DON'T DO THIS PAGE ALONE:** This special *Kid Scoop* Thanksgiving page is designed for you to do with a friend or family member. So find someone to share the fun!

# Thanksgiving Together!

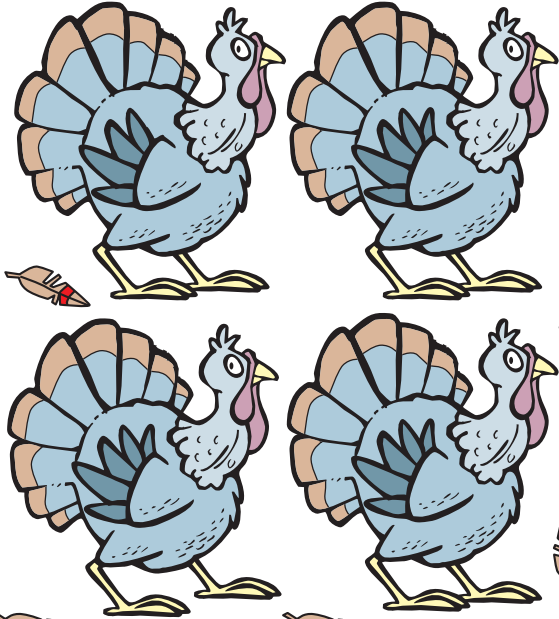


## Turkey Tracks

Have your partner use a RED crayon and you use a BLUE one. Which turkey will reach the finish line first? On your mark, get set ... GOBBLE!

Who can find the most turkey feathers on this page in 60 seconds?

Find the turkey that is different.



## A Slice of PI

All of these words start with the letters P-I. Read the clues and work together to fill in the missing letters.

1.      O
2.    K
3.   C
4.     T
5.

1. A heavy musical instrument with keys.
2. A small cucumber preserved in brine.
3. A meal packed to eat outdoors.
4. A person who robs ships at sea.
5. A platform over water that starts at the shore.

## Your Riddle, My Riddle

You circle every other third letter to reveal the punch line to your riddle. Your partner circles every third letter to reveal his or her punch line.

What's the best thing to put in a pumpkin pie?

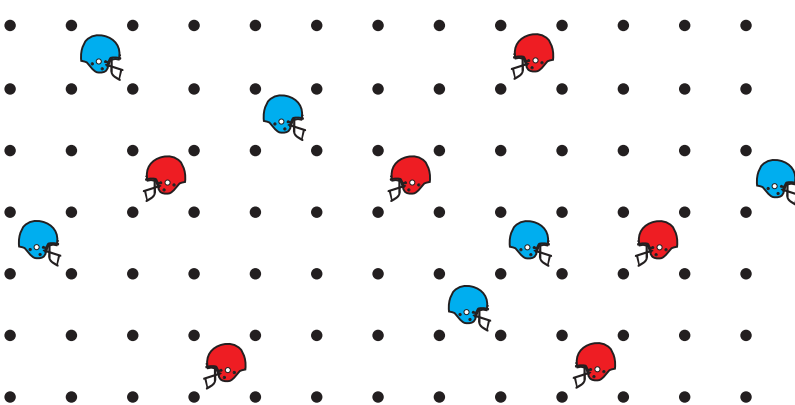
**ACYTBONMUSQRP  
BTJSENBKWTGZH**

What smells the best at Thanksgiving?

**ACYTBONMUSQR  
VWNJSOCWSUTE**

Standards Links: Life Skills: Share a task with others.

**Football Fun** You use a BLUE crayon and your opponent uses a RED crayon. Take turns connecting two dots each time. The person who completes a square gets one point. A square with a football helmet in it is worth three points!



FINISH

## Extra! Extra! Rhyme Time

Browse the newspaper for 10 words that would make good halves of a rhyming pair. Then have your partner scour the newspaper for words that rhyme with each of the ones you chose. Switch roles and try it again.

Standards Links: Vocabulary: Identify rhyming patterns and words.

FINISH

## Kid Scoop Puzzler

Practice saying **Thank you** in seven different languages! Match the **Thank you** to the country from which it comes.

- Tak** (tak)
- Gracias** (gra-see-us)
- Merci** (mehr-see)
- Kiitos** (kee-toas)
- Danke** (dahn-kah)
- Arigato** (ahree-gah-tow)
- Dziekuje** (dsyne-koo-yeh)

- FRANCE**
- DENMARK**
- JAPAN**
- POLAND**
- FINLAND**
- MEXICO**
- GERMANY**

Standards Links: Reading Comprehension: Follow simple written directions.

## Double Double Word Search

- TOGETHER
- CUCUMBER
- PUMPKIN
- PARTNER
- MUSICAL
- FAMILY
- TURKEY
- BRINE
- SHORE
- WATER
- SHARE
- HOUSE
- CLUES
- PIE

Find the words by looking up, down, backwards, forwards, sideways and diagonally.



Standards Link: Letter sequencing. Recognize identical words. Skim and scan reading. Recall spelling patterns.

MEDIA PARTNER



WARD MEDIA

## EXPLORE THE WORLD WITH YOUR LOCAL LIBRARY.



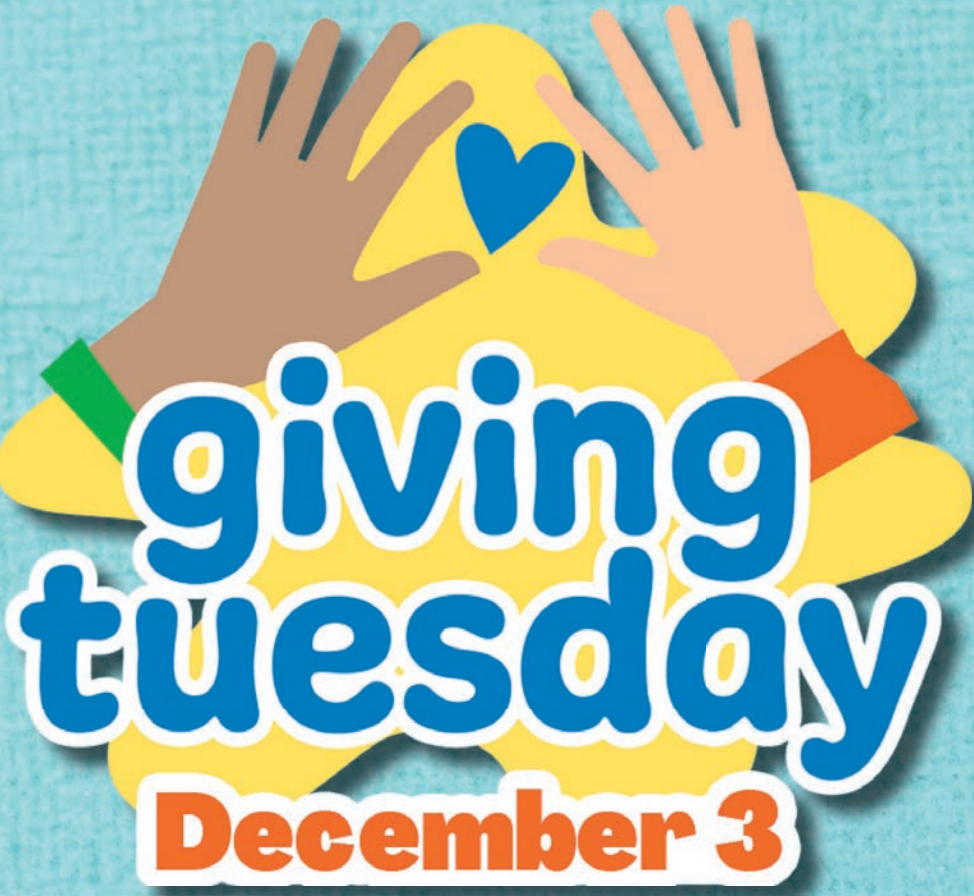
AT YOUR LIBRARY

- Storytimes
- After school events & activities
- Check out books, comics, movies, & more



NCWLIBRARIES.ORG

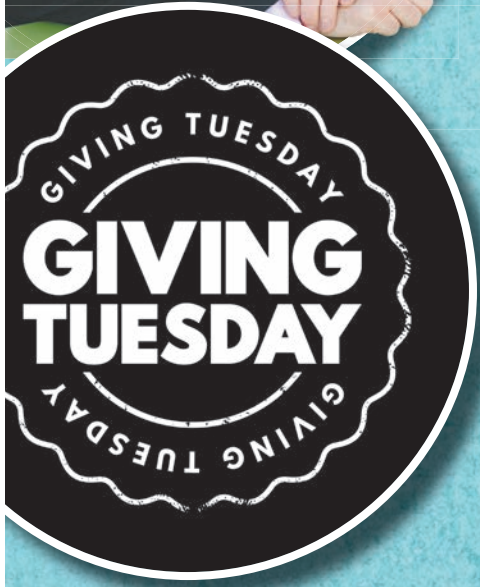
- Free homework help
- Britannica Library
- Stream books, comics, movies, & more



# A global movement spreading hope and generosity



**Make Giving Tuesday count for our communities**  
**Page B2**



**Giving Tuesday: A global movement spreading hope and generosity**  
**Page B3**



**Cyber scams come in many different forms**  
**Page B4**



**How to make a charity a beneficiary**  
**Page B4**



**Chelan Basin Conservancy works to preserve Chelan Butte**  
**Page B9**



# Give to Local Nonprofits!



Give NCW is an online fundraising campaign supporting nonprofits in North Central Washington during the holiday season. Just \$10 or more will support the arts, environment, youth, education, and vital human services that improve the quality of life for all across the region.

You can donate to one or several nonprofits on the list or "Give to All" and your donation will be matched and shared among participating nonprofits!

Scan the QR code to learn more and give!

Scan to Give!



GiveNCW.org

## Make Giving Tuesday count for our communities



STOCK PHOTO

As we approach Giving Tuesday on December 3, I'm reminded of the vital role nonprofits play across North Central Washington, weaving together the fabric of our communities through support, compassion, and progress. From food banks that nourish the hungry to shelters that offer refuge, from crisis counselors who lend an ear to arts programs that inspire – these organizations form an essential safety net and enrichment system that neither government nor private enterprise can fully provide.

Giving Tuesday presents a powerful opportunity to strengthen these indispensable institutions. These vital organizations stretch every dollar to serve our community, yet consistently face tough choices about which urgent needs they can meet with limited funds. While dedicated staff and volunteers power their daily operations, the stark reality is that financial constraints often prevent them from helping everyone who needs their services. Giving Tuesday is our chance to change that equation – to give these essential organizations the resources they need to say "yes" more often to our neighbors in need.

To view our Giving Tuesday contributions merely as acts of charity is to underestimate their

true impact. In reality, every dollar donated, every hour volunteered, is an investment in the health and vibrancy of our shared community. When we support a local food bank, we help children focus in school rather than on their hunger, and we help parents keep food on the table while keeping up with rising costs. When we fund mental health services, we ensure crisis support is available 24/7 for our neighbors, friends and family members during their darkest moments, creating a community where everyone knows help is just a phone call away.

The dividends of this investment are far-reaching. Our local nonprofits are economic engines that employ our neighbors, purchase from local businesses, and multiply every dollar donated into direct community impact. When disaster strikes – whether it's a wildfire threatening homes or families facing sudden

hardship – these organizations are already on the ground, knowing exactly who needs help and how to provide it.

While Giving Tuesday offers a powerful moment

to open our hearts and wallets, lasting community change needs sustained commitment. Whether it's setting up a monthly donation that nonprofits can count on, lending your professional expertise to a board of directors, spending Saturday mornings sorting food bank donations, or simply following and sharing local nonprofit stories on social media – every consistent action builds momentum. Let this Giving Tuesday be the day you discover how good it feels to be part of something bigger – the beginning of a deeper connection with the organizations working tirelessly to make our community stronger.

As December 3 approaches, remember that our community's true strength comes from how we take care of each other. The measure of our success isn't found in spreadsheets or statistics, but in our willingness to reach out and lift up our neighbors in need. Your Giving Tuesday contribution sends a powerful message about who we are and what we stand for here in North Central Washington – that in this corner of the world, no one faces life's challenges alone.

Together, let's make this Giving Tuesday a powerful reminder of what makes our region special – neighbors helping neighbors, today and every day.

Terry Ward, Publisher



### Chelan Douglas Community Action Council

**Non-Profit Name:** Chelan Douglas Community Action Council

**Mission Statement:** To end poverty by empowering people and improving lives.

**Brief Description of Your Nonprofit:** CDCAC strives to reduce barriers leading to poverty, to empower people to build long-term stability and resiliency, and to improve and sustain quality of life for those we serve.

**Year Established:** 1965

**Geographic Area Served:** Chelan and Douglas County, primary, AmeriCorps programs extend to Okanogan, Grant, Adams and Lincoln County

**Key Programs or Services:** Housing and affordable apartment units; regional food bank, Community Market, Mobile Food; English as a Second Language classes; Financial Education classes; energy assistance; weatherization, energy conservation and home health improvements; AmeriCorps and AmeriCorps Seniors (RSVP); in addition we provide student and adult internships, work study and on-the-

job learning experiences.

**How Can the Public Support You?:** We accept donations of food and essential needs, volunteer tutors, exercise volunteers, food pantry volunteers, and many more ways to support and give back to your community.

**Contact Information:** Address: 620 Lewis Street, Wenatchee WA 98801

**Phone:** 509-662-6156 **Email:** info@cdcac.org

**Social Media Links:** www.facebook.com/cdcommunityaction

**Contact Person:** Alan Walker



### Lions Club of Leavenworth

**Non-Profit Name:** Leavenworth Lions Club  
**Mission statement:** To create and foster a spirit of understanding among all people for humanitarian needs by providing voluntary services through community involvement and international cooperation.

**Brief description of your non-profit:** Men and women, in all walks of life, serving their community. Initially, Helen Keller challenged us to become "Knights of the Blind"; a strong mission of ours is focused on helping those with vision problems. Keep your eyes open for our eyeglass collection boxes around town! Among our other goals, a cleaner environment, conquering diabetes, feeding the hungry. Our club meets twice a month, for fellowship, fun, and focusing on the question: "What's our next project?" It's exciting and fulfilling to serve others, no other feeling quite like it. In the words of Helen Keller, "The unselfish effort to bring cheer to others will be the beginning of a happier life for ourselves."

**Year established:** 1951

**Geographic area served:** Leavenworth and surrounding communities down valley

**Key Programs or Services:**  
• **Vision Assistance:** We collect used eyeglasses, help with exam and eye glass expenses, and do vision exams at local schools.

• **Our Fight Against Diabetes/Helping Those Live with the Disease:** We provide scholarships for youngsters to attend diabetes camps.

• **Addressing Hunger:** Annual food drive with Dan's Food Market and monetary donations to food bank

• **Environment:** Highway 2 cleanup. We are incorporating

recycling/composting methods in the serving of our community breakfasts.

• **Supporting Future Generations:** We provide clothing and supplies for elementary students. We support youth sports programs. For graduating seniors, Lions sponsor scholarships.

• **Sustaining Our Community:** We help Friends of the Library with book sale. We donate financially to Cascade Medical Foundation.

• **Providing Optimism and Fun:** We bake and deliver valentine cookies and cards to Mountain Meadows Senior Living Campus. May Day baskets and cards are delivered there too. The Lions sponsor a community Easter Egg Hunt.

**And more.....**

**How can the public support you?** Community Breakfasts in Lions Club Park, May through September, Hot dogs in the park during home swim team meets, Donations

**Contact Information:** Current President Tony Maffey

**Address:** LEAVENWORTH LIONS CLUB PO BOX 113, LEAVENWORTH WA 98826-0113

**Phone:** (509)470-6743

**Email:** snthp@charter.net

**Website:** http://www.leavenworthlions.com/

**Social Media Links:** https://www.facebook.com/LeavenworthLionsWA

**Contact Person:** Current President Tony Maffey

**Additional Materials:** Worldwide, we support the Lions Clubs International Foundation, a charitable arm of Lions Clubs International, that provides relief for disasters. If you want to make a difference in your community, country, and world, we encourage you to check us out. It's an opportunity to give back, make new friends, hone leadership skills, and have fun!



# Giving Tuesday:

## A global movement spreading hope and generosity

Rooted in the spirit of generosity, this global phenomenon, celebrated on the Tuesday following

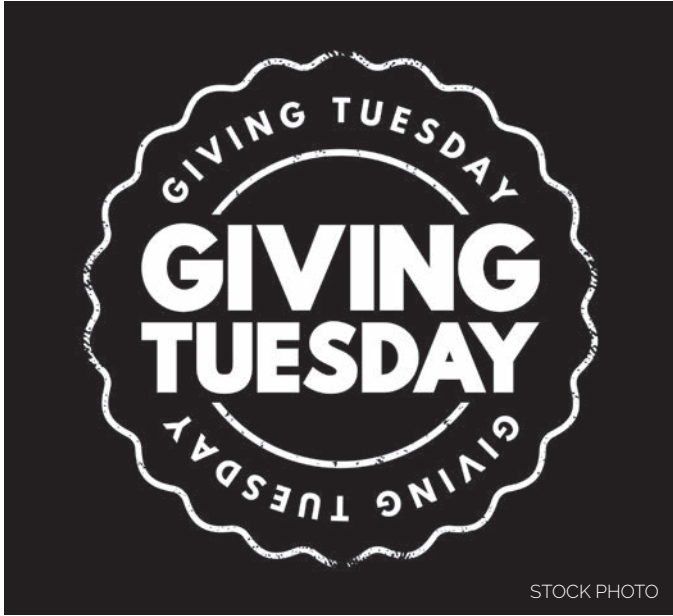
Thanksgiving, encourages individuals and communities worldwide to embrace the act of giving back.

### Origin and History:

Emerging in 2012 as a response to the commercialism of Black Friday and Cyber Monday, the concept of Giving Tuesday was born from a collaboration between the 92nd Street Y, a cultural and community center in New York City, and the United Nations Foundation. Fueled by the power of social media and the collective desire to make a positive impact, this initiative swiftly gained traction, transcending borders and cultures.

### The Purpose and Impact:

Giving Tuesday serves as a beacon of hope, uniting people across the globe to support causes close to their hearts. Whether contributing funds to charitable organizations, volunteering time and expertise, or simply spreading awareness, this day empowers individuals to effect change in their communities and beyond.



STOCK PHOTO

### Unwavering Support and Growth:

Over the years, the ethos of Giving Tuesday has reverberated across continents, igniting a spirit of philanthropy that knows no bounds. Organizations, corporations, and individuals join forces, amplifying the impact of their contributions to address diverse issues, from education and healthcare to environmental conservation

and social justice.

### Local Initiatives and Participation:

Communities around the world, including our own in North Central Washington, embrace Giving Tuesday with enthusiasm and passion. From charitable drives and fundraising events to volunteer-led initiatives, the spirit of giving resonates deeply within our neighborhoods, enriching lives and fostering a

culture of compassion.

### Looking Ahead:

As the world faces various challenges, the significance of Giving Tuesday continues to grow, reminding us of the profound impact of altruism. With each passing year, this day serves as a powerful reminder that generosity knows no bounds and that collective action can pave the way for a brighter, more compassionate world.

## Chelan Valley Hope

**Non-Profit Name:** Chelan Valley Hope  
**Mission Statement:** Furthering positive changes in people's lives. We envision a Chelan Valley where all people in need are compassionately and confidentially connected with timely relief and other relevant resources.

**Brief description of your nonprofit:** Chelan Valley Hope offers essentials like food, shelter, hygiene, showers, laundry facilities, and a warm overnight place to stay. At Chelan Valley Hope, we advocate for those who may struggle to be heard, working to foster stability and connect people with essential services. Chelan Valley Hope supports families with basic needs as well as addressing unique challenges like, senior care, healthcare, social security, identification, state assistance, counseling, and much more. This year alone, we served nearly 4,000 summer lunches to children in need. Every service is delivered with dignity and respect. When people seek our support, they leave with a reliable ally who helps them navigate life's challenges. Your gift to Chelan Valley Hope empowers us to continue innovative and daring solutions to lift people out of poverty.

**Year Established:** 2009  
**Geographic area served:** Chelan, Chelan Falls, Entiat, Manson, Mansfield, Orondo, Bridgeport, Waterville and Pateros.  
**Key programs or services:** Rental assistance, utilities, food, hygiene items.  
**How can the public support you?** Donations of food, coats, blankets, monetary support, and time are always appreciated!  
**Contact Information:** 417 S. Bradley Street, PO Box 1527, Chelan, WA 98816  
**Phone:** 509-888-2114  
**Email:** info@chelanvalleyhope.org  
**Website:** chelanvalleyhope.org  
**Social Media Links:** @chelanvalleyhope  
**Contact Person:** Mikayla Gonzalez



## Chelan Valley Housing Trust

**Non-Profit Name:** Chelan Valley Housing Trust  
**Brief description of your nonprofit:** Develop stable and secure housing that is attainable to Manson and Chelan wage earners. We believe that secure housing in which families, young professionals, and seniors can thrive is crucial to a healthy community, and strong economy. Chelan Valley Housing Trust is a 501-c3 non profit housing developer aiming to house local wage earners in Chelan and Manson. The Lake Chelan valley has a housing crisis. Most of our area's wage earners can no longer afford to live here. We want to solve this problem through the community land trust model (CLT) which focuses on home ownership, perpetual affordability and stewardship.  
**Year Established:** 2019

**Geographic area served:** We serve people who work and live inside the Manson or Chelan School District boundary.  
**Key programs or services:** We build homes that are attainable for local wage earners and after building the initial home it is kept attainable to the next buyer generation after generation ensuring that our one time community

investment can serve this community forever.  
**How can the public support you?** The public can support in several ways, by getting involved and volunteering, or by donating money or other resources including land, and being advocates and influencers.  
**Contact Information:** 123 E Johnson Ave. Suite 1, PO Box 674, Chelan WA 98816  
**Phone:** 509-508-1183  
**Email:** info@chelanvalleyhousing.org  
**Website:** www.chelanvalleyhousing.org  
**Social Media Links:** www.facebook.com/chelanvalleyhousing  
**Contact Person:** Scott Meyers



## Chelan Valley Community Nurse Enfermera de la Comunidad

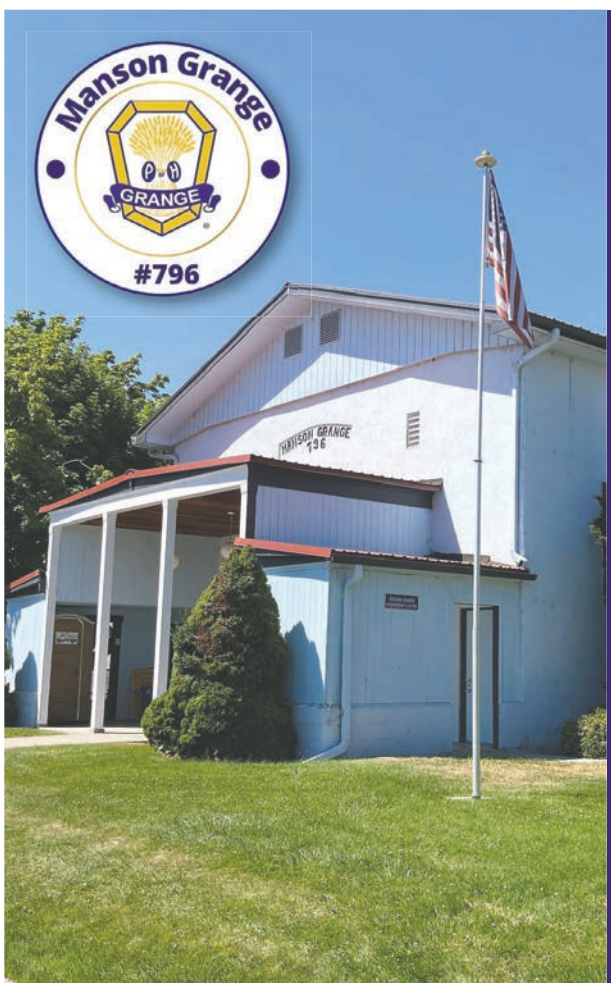


The Chelan Valley Community Nurse is a free, grass roots program dedicated to assisting our Chelan Valley seniors and others who are frail or vulnerable, to keep them safely in their homes. CVCN offers in-home Blood Pressure checks, Medication and Treatment Education, especially post hospital discharge, and Management Assistance with new or chronic conditions. CVCN provides free, bi-weekly blood pressure checks at the Chelan Senior Center. Call the Chelan Senior Center at 509-682-2712 for dates. CVCN also provides referrals to Physicians, Community Resources and Support Services for both Clients and their Families. Our services offer relief and support for family members as well, who live outside our valley and who are unable to physically assess and attend their loved ones. The Chelan Valley Community Nurse Program is FREE to anyone living within the Lake Chelan Valley and is funded entirely by Donations and Grants. We do not require Physician Orders, Insurance or payment. We depend upon the generosity of Donors for revenue and Your Support is Deeply Appreciated!

**For information or to refer yourself, a neighbor or a loved one, please call 509-679-9059 or 509-393-1450. We are here to assist you and those you care about.**

chelanvalleycommunitynurse@gmail.com | www.chelanvalleycommunitynurse.org

**To Donate:** facebook@ChelanValleyCommunityNurse Donations by Check may be mailed to: Chelan Valley Community Nurse, PO Box 2987, Chelan, WA 98816



## If the Walls Could Talk!

The **Manson Grange** has been a vital part of our Lake Chelan community for well over 100 years! This historic building hosts social gatherings, community events, classes, political forums, and school functions.

Our capital improvement project will assure we meet the needs of our growing community and create easier access into the building with an ADA ramp, enlarged restrooms, and more.

Please help to revitalize the **Manson Grange** with your tax-deductible donation. Your support allows us to offer even more activities, improve our facility and maintain this historic building and its roots.

**Together we can improve the lives of our community members!**

Visit our website at [www.mansongrange.com](http://www.mansongrange.com) for details and information on how you can get involved or donate.

*It's the season to*

# MAKE A DIFFERENCE

*for your neighbors*

Your gift to Upper Valley MEND provides:

- Nutritious food for local families in need through the Community Cupboard food pantry
- Safe, affordable housing for working families
- Access to our Free Clinic for someone who can't afford medical or dental costs
- Short-term financial assistance for someone experiencing a crisis.

**GIVE TODAY**

or visit

[uvmend.org/donate](http://uvmend.org/donate)

Plus, your gift can be matched!

# How to make a charity a beneficiary

Giving to charity can be a rewarding endeavor that makes a difference in the lives of people in need. Many people donate throughout their lives, and some people may want to impart a more lasting legacy by continuing to support a charity even after they have passed away.

Incorporating a charity into an estate plan is a great way to continue giving after you pass away. Individuals may not know how to make charities beneficiaries in their wills. A financial planner, attorney or accountant can answer the more complex questions individuals have about naming charities as beneficiaries in a will. In the meantime, this general guide can serve as a solid foundation for individuals

who want to give back in their wills.

Most people think of beneficiaries as loved ones, but a beneficiary can be any person or entity one chooses to leave money to, including nonprofit organizations. It's relatively the same process to name a charity as a beneficiary as it is an individual. According to the resource Trust & Will, first identify the charity that will be supported, including getting its Employer Identification Number or Taxpayer Identification Number. Next, determine which type of gift to make, which may be a predetermined financial contribution, a gift of property, or other assets like stocks. For large donations like real estate or cars, it may be best to contact the charity in advance

to ensure they are able to accept such gifts. Finally, be sure to include your wishes in an estate plan. A qualified attorney can help clients draft a will that spells out their wishes in detail.

Keep in mind that charities also can be named as beneficiaries on life insurance policies or individual retirement accounts. They also can be listed on bank accounts. Again, people are urged to discuss all options with estate planners to ensure their plans fully reflect their wishes.

When naming a charity as a beneficiary, it can be wise to inform family members and other beneficiaries so no one is caught off guard upon your death. This way the charitable gift is not held up by delays in executing the will.



STOCK PHOTO

# Cyber scams come in many different forms

In a relatively short period of time, the internet has changed the way people live. Things that might have been unimaginable as recently as a quarter century ago are now ingrained in daily life. For instance, few people in the late 1990s might have imagined a day when billions of people across the globe would be walking around with mini-computers capable of taking hi-resolution photos in their pockets. But smartphones have long since become an accepted and vital part of life in the 21st century.

The internet has opened doors to new possibilities, but it's also left other doors open for cybercriminals. Any home with an internet connection is potentially vulnerable to internet scams. Recognition of that fact and awareness of the following scams can reduce the likelihood of being victimized by opportunistic cybercriminals.

- **Disaster relief scams:** Human beings' innate sense of compassion is on full display in the aftermath of natural disasters when people across the globe typically donate hundreds of millions of dollars in an effort to help people whose lives have been turned upside down by hurricanes, wildfires, and other devastating events. But skilled cybercriminals prey on that compassion by setting up bogus relief efforts. Such efforts may involve fake charities with names that are similar but slightly different than well-known, legitimate nonprofit organizations. Operations such as Charity Navigator make it easy to verify if a charitable organization is legitimate, and would-be donors should utilize such resources prior to making any donations.
- **Phishing scams:** Phishing scams are among the oldest cyber scams, but they still nab victims every day. The Federal Trade Commission

warns that many phishing scams are conducted via email or text messages and inform potential victims that there is an issue with their finances. Some may say there are issues with a bank account, credit card or even a tax return. Skeptics may wonder how anyone could fall for a phishing scam in the age of two-factor authentication and other security measures. However, the Federal Bureau of Investigation reports that phishing scams cost victims nearly \$60 million in 2019, indicating they're still a lucrative source of income for cybercriminals.

• **Formjacking:** Formjacking is a retail-based scam in which online shoppers' personal and financial information is stolen. In such instances, a retail website could be hacked without users' knowledge. When it comes time to purchase

items they've placed in their carts, users are redirected to a fraudulent payment page, where they enter personal information, such as their credit card number, that cybercriminals then steal. When buying items online, shoppers should confirm that the URL on the payment page aligns with the retailer they're buying from. If the URL is missing even a single letter (think Amazon.com instead of Amzon.com), then chances are a formjacking scam is being operated.

Tech support scams, in which users are asked to download applications to fix an infected computer, and similar download-based fake antivirus software scams are some additional examples of cyber scams. Users are urged to be on the lookout for each of these types of scams and exercise caution whenever something doesn't seem right or authentic.



STOCK PHOTO

December 3, 2024

**GIVING TUESDAY**

Give a gift they'll never forget



A place to call "Home" in the Chelan Valley

Your donation builds homes that local wage earners can afford to buy.

[www.chelanvalleyhousing.org](http://www.chelanvalleyhousing.org)



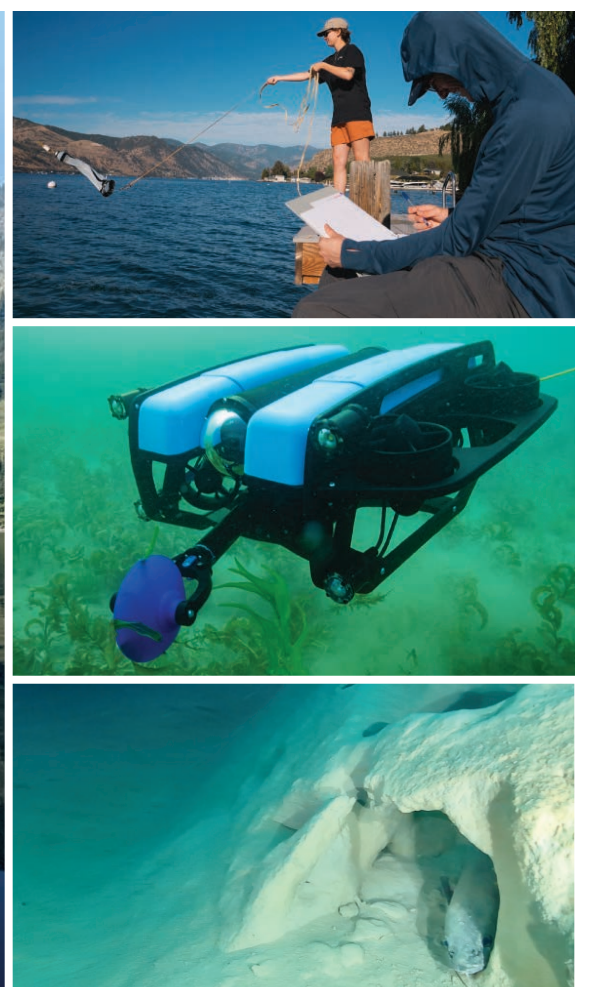
**CHELAN VALLEY HOUSING TRUST**







Scan to help us keep Lake Chelan blue & clear into the future  
[KeepItBlueLakeChelan.org](http://KeepItBlueLakeChelan.org) • [LakeChelanResearchInstitute.org](http://LakeChelanResearchInstitute.org)



SPONSORED CONTENT

# Lake Chelan Research Institute and Keep It Blue

## Lake Chelan

Between 2007 and 2016 (9 years!) there were essentially **ZERO** water quality measurements done on Lake Chelan. In 2017 Phil Long (Chelan Resident and Environmental Scientist) and Mike Kaputa (Chelan County Natural Resources Department, CCNRD) decided to 1) Apply for a grant to initiate a long-term monitoring program for Lake Chelan, and 2) Form the **Lake Chelan Research Institute** (LCRI) to create a local entity to conduct monitoring of Lake Chelan in collaboration with CCNRD.

Since then, we have continued monthly monitoring of the lake with support from local and State Agencies: the City of Chelan, Chelan County, Lake Chelan Reclamation District, Cascadia Conservation District, Washington Department of Ecology, and the Chelan County PUD. We also are supported by local businesses and individuals. Special thanks to all the organizations and individuals who have supported our work!

Our monitoring results to date shows that the water quality of Lake Chelan is little changed since 1987 when the first water quality study of the lake was conducted. For the most part, we still enjoy the

crystal-clear waters of Lake Chelan. But many locals and visitors alike are aware that some things have changed for the worse. For example, we have more than 400 acres of invasive aquatic plants in the lake, such as Eurasian Water Milfoil that were not present 20 years ago. We have also learned, thanks to reports from waterfront homeowners, that there is increasing growth of **attached green algae**, also known as periphyton. With the support of the Chelan County PUD Public Power Benefit Program, we are assessing periphyton growth along the shoreline. We are wrapping up year 2 of a 3-year project, so stay tuned!

The Lake Chelan Watershed Planning Unit, led by CCNRD, will be creating a Lake Chelan Watershed Restoration Plan to help us address these issues, among others. Meanwhile, we have near-term funding needs including: 1) Development of an **initial Diver Assisted Suction Harvesting (DASH) capability** to actively remove aquatic invasive plants, 2) Monitoring of the impacts of the Pioneer Fire to Lake Chelan water quality, 3) **Additional navigation tools** for our underwater Remotely Operated Vehicle (ROV) to facilitate our exploration of the

bottom of the lake, 4) Assess the **impacts of tire dust** on our land-locked Kokanee and Chinook salmon populations, and 5) **Support for our educational activities** with Chelan and Manson School Districts.

We are starting to see the benefits of involving grade school and middle school kids in monitoring Lake Chelan. This past summer, we had a Chelan High School student working for us. She first learned about our work in grade school on an educational trip on the Sheriff's boat. We need your help to restart our on-the-water student activities. We also need funding to be able to hire students from both Chelan and Manson High Schools every summer!

Both **LCRI** and **Keep It Blue-Lake Chelan**, the public outreach part of our work, are under the fiscal sponsorship of the Lake Chelan Recreation Development Foundation, a 501(c)3 organization. We accept private donations from individuals and businesses. Your donation may be tax deductible per IRS rules. We will use your donations to support crucial activities noted above that are not funded by local, state or federal agencies. We will be honored and very grateful to have your support!



### Manson Grange

**Non-Profit Name:** Manson Grange #796  
**Mission Statement:** To be a family-oriented, community service organization with a primary interest in the quality of life of residents in rural, agricultural areas. The Grange strengthens individuals, families, and communities through grassroots action, service, education, advocacy, and agricultural awareness.  
**Brief description of your nonprofit:** The Manson Grange is one of 1,700 local chapters across the nation that serves as the center of rural life in our communities. We offer a range of locally-oriented programs, activities, and community service events. Charitable work is often the focus with members giving many volunteer hours and raising money for important causes. The Grange helps improve the lives of their community members through partnerships with the Manson Parks, the Apple Blossom Festival, the Chamber of Commerce, the Grange Youth Fairs program, etc. While providing many activities and an affordable facility rental.  
**Year established:** 1904  
**Geographic area served:** Local Lake Chelan Valley - State of Washington and National Grange Organization.

**Key Programs or services:** Social gatherings, facility rental, farmers market, exercise classes, community forums, private events, community partnerships (Manson Parks, Apple Blossom, etc.)  
**How can the public support you:** 1. Join our organization 2. DONATE to our Capital Improvement Fund  
**Contact:** P.O. Box 306, Manson, WA 98831, 157 E. Wapato Way, Manson, WA 98831  
**Email:** info@mansongrange.com  
**Website:** www.mansongrange.com  
**Social Media Links:** Manson Grange  
**Contact Person:** Terrie Carleton - riddelltc@gmail.com

### Tender Loving Care for Seniors

**Non-Profit Name:** Tender Loving Care for Seniors  
**Mission Statement:** Tender Loving Care for Seniors provides holistic support free of charge to vulnerable seniors in the Chelan Valley. Brief description of your nonprofit: TLC addresses social, emotional, physical and spiritual needs, serving each senior with respect, compassion and dignity. TLC has provided over 7,000 visits to seniors, and 200,000 miles of transportation since its inception.  
**Year Established:** 2017  
**Geographic area served:** Chelan, Manson and Chelan Falls.  
**Key programs or services:** Our TLC volunteers provide: companionship to the isolated, support to burnt out caregivers, connect seniors to additional services, help with shopping and needed transportation.  
**How can the public support you?** We are always in need of volunteers that are willing to help out a senior in need in our community. We also appreciate any donations to help support our organization financially.  
**Contact Information:**  
**Address:** PO Box 2852, Chelan, WA 98816  
**Phone:** 509-699-9042  
**Email:** tlcprogram4@gmail.com  
**Social Media Links:** https://www.facebook.com/TenderLovingCareChelanValley/  
**Contact Person:** Sandy Zimchek

### Community Foundation of NCW

**Non-Profit Name:** Community Foundation of NCW  
**Mission Statement:** To grow, protect, and connect charitable gifts in support of striving communities.  
**Brief description of your nonprofit:** Established in 1986, CFNCW manages \$163 million in charitable assets through 690 + individual funds and has awarded over \$63 million in grants & scholarships.  
**Year established:** 1986  
**Geographic area served:** Chelan, Douglas and Okanogan counties  
**Key programs or services:** Grantmaking, scholarships, leadership institute of NCW, Nonprofit Practice Institute, donor service.  
**How can the public support you?** Donate to nonprofits at www.givencw.org

**Contact information:**  
 9 S. Wenatchee Avenue  
 Wenatchee, WA 98801  
**Phone:** 509-663-7716  
**Email:** jennifer@cfncw.org  
**Website:** www.cfncw.org  
**Contact Person:** Jennifer Dolge

### Lake Chelan Historical Society

**Nonprofit name:** Lake Chelan Historical Society  
**Mission Statement:** Our mission is to act as a historical resource and cultural center for the Lake Chelan Valley.  
**Brief description of your nonprofit:** The Lake Chelan Historical Society was started by James Lindston after he retired from Seattle First Bank as the Chelan Branch manager. We publish History Notes annually which presents short articles of historic events in the valley. Our archives include photos, audio recordings, family files and special interest files.  
**Year Established:** 1970  
**Geographic area served:** Chelan Valley, Stehekin, Manson, Lucerne, Holden, Chelan Falls, and Chelan.  
**Key programs or services:** Custom photo sales, reference area available to the public and gift store.

**How can the public support you?** One of the best ways to support the museum is to volunteer. Other ways: become a member or give financial gifts.  
**Contact Information:** PO Box 1948, 204 E. Woodin Avenue, Chelan, WA 98816  
**Phone:** 509-682-5644  
**Email:** chelanmuseum@nwi.net  
**Website:** www.chelanmuseum.com  
**Social Media Links:** Facebook Chelan Museum  
**Contact Person:** Ron McGaughey, Manager

**Chelan Valley HOPE**  
 Furthering Positive Changes in People's Lives

KEEPING FAMILIES SAFE, HOUSED, FED, AND CLOTHED IN THE CHELAN VALLEY. OUR NEIGHBORS ARE STRUGGLING. WILL YOU ANSWER THE CALL?

DONATE TODAY!  
 PO BOX 1527 CHELAN, WA  
 WWW.CHELANVALLEYHOPE.ORG/DONATE

### Lions Clubs International "We Serve"

Leavenworth Lions Club, reflecting the values of Lions Clubs International, welcomes all faiths, races, and gender, only requiring from their members a passion to serve, and have fun while doing so. If you're interested in joining us, some of the following may pique your interest:

**Vision Assistance:**  
 We collect used eyeglasses, help with exam and eye glass expenses, and do vision exams at local schools. Our Fight Against Diabetes/Helping Those Live with the Disease We provide scholarships for youngsters to attend diabetes camps.

**Addressing Hunger:**  
 We make monetary donations to the local food bank. In conjunction with Dan's Food Market, we hold an annual food drive, benefiting our community.

**Supporting Future Generations**  
 We provide clothing and supplies for elementary students. We support youth sports programs. For graduating seniors, Lions sponsor scholarships.

**Environment**  
 Our club cleans a section of Highway 2. We are incorporating recycling methods in the serving of our community breakfasts.

**Sustaining Our Community**  
 We help Friends of the Library  
 We donate financially to Cascade Medical Foundation.

**Providing Optimism and Fun**  
 We bake and deliver valentine cookies and cards to Mountain Meadows Senior Living Campus. May Day baskets and cards are delivered there too. The Lions sponsor an Easter Egg Hunt. And more .....

**To finance our good works:**

- Community Breakfasts in Lions Club Park, May through September
- Hot dogs in the park during home swim team meets
- Chelan County Fair ticket sales
- Chamber of Commerce Ambassadors Program
- Scoring Chestnuts for Christmas Lighting weekends
- And more .....

Worldwide, we support the Lions Clubs International Foundation, a charitable arm of Lions Clubs International, that provides relief for disasters.

If you want to make a difference in your community, country, and world, we encourage you to check us out. It's an opportunity to give back, make new friends, hone leadership skills, and have fun!



## Three Rivers Hospital Foundation

**Non-Profit Name:** Three Rivers Hospital Foundation  
**Mission Statement:** Three Rivers Hospital Foundations mission is to raise funds and awareness for programs and services that improve the quality of patient care in our hospital district.  
**Brief description of your nonprofit:** Our Foundation raises funds through donations and grants. We are governed by a board of directors that works closely with hospital leadership to identify critical needs, such as advanced medical equipment, patient care programs, and facility improvements. We provide funding in all those areas, as well as community outreach sponsorships such as free sports physicals.  
**Year Established:** 2014  
**Geographic area served:** Hospital District #1: Mazama, Winthrop, Twisp, Carlton, Methow, Pateros, Brewster, Bridgeport and Mansfield.  
**Key programs or services:** 24-hour ER, inpatient and extended recovery (swing bed) care, surgical services (general, orthopedic, and gynecological), family practice clinic, outpatient physical therapy, laboratory and radiology services, advanced wound care  
**How can the public support you?** The Foundation Board is seeking dedicated

individuals to join us in advancing our mission. While financial contributions are vital, we also need local residents who are passionate about the success of their community hospital to become active members of the Foundation. We are eager to expand with committed volunteers who can help us effectively address the hospital's growing needs. By joining, you'll play a pivotal role in shaping the future of healthcare in our community. Your time, expertise, and perspective can make a meaningful difference.  
**Contact Information:** PO Box 455, Brewster, WA 98812  
**Phone:** 509-733-1562  
**Email:** trhospitalfoundation@gmail.com  
**Website:** www.threerivershospitalfoundation.org  
**Social Media Links:** Facebook  
**Contact Person:** Daniel Webster



## Tierra Learning Center

**Non-Profit Name:** Tierra Learning Center  
**Mission Statement:** Tierra Learning Center provides homes and services for people with developmental disabilities in a collaborative and integrated community in which people of all abilities live as equal citizens with full respect for their human rights, freedom and dignity.  
**Brief Description of Your Nonprofit:** Programs for adults with developmental disabilities that include an Adult Family Home, Employment Services and a Recreation/Education Day program.  
**Year Established:** 2013  
**Geographic Area Served:** Chelan-Douglas Counties  
**Key Programs or Services:** Adult Family Home, Employment Services, and a Recreation/

Education Day program.  
**How Can the Public Support You?** People are invited to make cash or in-kind donations. We are always looking for volunteers to assist with our recreational programs.  
**Contact Information:**  
**Address:** 12000 Sunitsch Canyon Road, Leavenworth, WA 98826  
**Phone:** 509-548-6880 ext 266  
**Email:** Meeche@TierraLearningCenter.org  
**Website:** www.TierraLearningCenter.org  
**Social Media Links:** Facebook: https://www.facebook.com/TierraLearningCenter; Instagram: tierralearningcenter  
**Contact Person:** Meeche White



## Chelan Valley Community Nurse

**Nonprofit name:** Chelan Valley Community Nurse  
**Mission Statement:** Chelan Valley Community Nurse aims to provide compassionate, holistic care to frail and vulnerable seniors in the Chelan Valley. Our client based organization is committed to improving the quality of life for seniors who are home-bound or at risk of becoming so. We offer health screenings and education through our skilled nursing staff and non-medical, social and emotional support from dedicated volunteers. Our goal is to meet the diverse needs of our seniors with dignity and respect. We serve as a crucial link to community resources, providing referrals as needed. All our services are offered free of charge, demonstrating our dedication to ensuring quality care for all seniors in our community.  
**Brief Description of your nonprofit:** CVCN provides assistance to the frail and vulnerable adults within the Lake Chelan Valley, particularly those who are homebound or at risk of becoming homebound. This service includes in-home visits by a registered nurse, referrals to other appropriate services and programs within the community, health screenings, medication and blood pressure monitoring and education regarding client medical diagnosis.  
**Year Established:** 2017

**Geographic area served:** Lower Lake Chelan Valley, Manson and Chelan Falls.  
**Key Programs or services:** The specific objectives and purpose of this organization are:  
 1. To assist senior and vulnerable persons to continue safely living in their homes.  
 2. To provide referrals and access to services available in the community, and coordinate care between doctors, volunteers, and other services;  
 3. To provide assistance with medication management;  
 4. To evaluate individual needs and perform home safety evaluations;  
 5. To provide health education and outreach;  
 6. To offer these services completely FREE of charge.  
**How can the public support you?** CVCN provides all of its own funding through fundraisers and donations and does not receive government funds. Clients are never charged for this FREE service. Community support through financial donations is greatly appreciated.  
**Contact Information:**  
**POBox** 2987, Chelan WA 98816  
**Phone:** 509-679-9059 or 509-393-1450.  
**Email:** chelanvalleycommunitynurse@gmail.com  
**Website:** www.chelanvalleycommunitynurse.org  
**Social Media Links:** Facebook  
**Contact:** Catharine - 509-679-9059

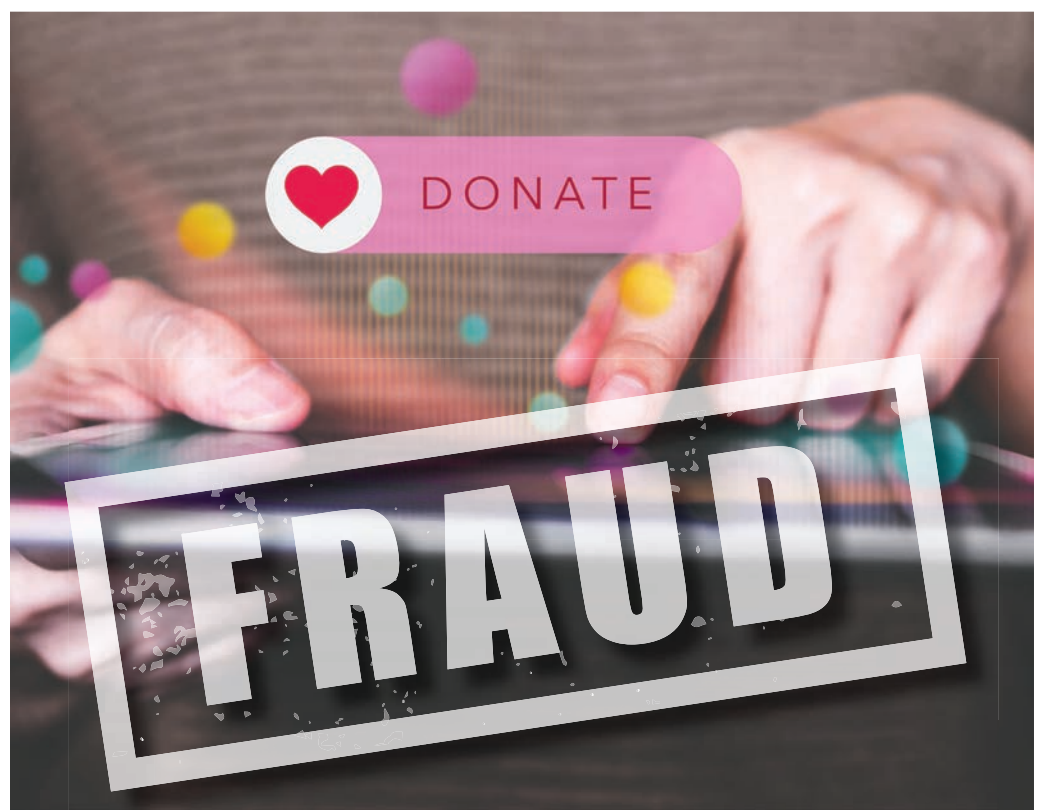


## Signs of charitable fraud

Giving to charity is a selfless endeavor that's vital to the survival of countless nonprofit organizations across the globe. Without the generosity of donors, many charitable organizations would cease to exist, leaving the people they help vulnerable to illness and financial hardship.  
 Fraud may be the furthest thing from donors' minds, but it's something charitable individuals must be aware of as they consider donating to charity. According to the Federal Bureau of Investigation, charity fraud increases during the holiday season, when many people embrace the spirit of giving and seek to make end-of-year tax deductible gifts to their favorite charities.  
 The FBI also warns that charity scams are common after disasters or tragedies, including pandemics. The Federal Trade Commission noted in September 2020 that Americans had lost more than

\$145 million to charity fraud related to the coronavirus in the first six months of the pandemic.  
 One measure all prospective donors should take is to learn the signs of charitable fraud. Many charity scams target seniors, but no one is entirely safe from charity fraud. AARP notes that the following are some warning signs of charity fraud.  
**Pressure to give:** Reputable charities do not pressure prospective donors into giving. A strong, trustworthy charity will accept donations whenever donors choose to make them. Legitimate operations like the American Red Cross may heighten their solicitations after natural disasters, but such groups still will not try to pressure people into donating.  
**Thanking donors for donations they don't recall making:** AARP notes that some charitable fraud perpetrators will try to convince potential victims they have already

given to a cause. This is done in an effort to lower potential victims' resistance, giving them a false sense of security and the impression that a fraudulent operation is legitimate. If donors don't recall donating to a specific charity, chances are strong they didn't make such a donation and that the message of gratitude is merely a fishing expedition intended to reel in new victims.  
**Requests for cash, gift cards, or wire transfers:** Cash, gifts, and wire transfers are difficult to trace, which makes it easier for perpetrators of fraud to escape the authorities. Reputable charities will welcome donations made by personal check or credit card.  
**Perpetrators of charitable fraud prey on the vulnerability of well-meaning donors who simply want to support a good cause.** Learning to spot signs of charitable fraud can provide an added measure of protection against the criminals behind such operations.



STOCK PHOTO



Your support brings environmental education to **every kid** in our community.



Help us continue to connect kids with nature across North Central Washington. Scan the code or visit our website to show your support this Giving Tuesday.

www.wenatcheeriverinstitute.org



Sue Marcear  
2024 Volunteer of the Year

We appreciate Sue Marcear, one of our star volunteers for over 12 years here at the Chelan museum.

Originally from Wisconsin, Sue grew up in Chelan. Her Chelan graduation class has met every month since graduation!

Sue had a career for 27 years at PUD's Wells Dam as a parts and materials coordinator. She also worked for the Slausenhaupt Agency and for several years at the Lake Chelan Chamber of Commerce.

We are lucky to benefit from all her hard work and winning personality.

*Thank you so much Sue!*

Lake Chelan Historical Society Board

204 E. Woodin, Chelan, WA 98816 P.O. Box 1948 (509) 682-5644  
 chelanmuseum@nwi.net www.chelanmuseum.com



SPONSORED CONTENT

# Community program transforms lives of seniors through volunteer support



STOCK PHOTO

In the scenic lakeside communities of Chelan and Manson, a grassroots initiative is making a significant impact on the lives of elderly residents, one visit at a time.

Tender Loving Care for Seniors (TLC), established in August 2017, has provided more than 7,000 visits to 173 seniors through its network of 36 active volunteers. The program focuses on enabling seniors to maintain independence in their homes while receiving essential support services.

The program serves a diverse elderly population with an average age of 82.7 years, ranging from 58 to 101 years old. Women comprise 67% of clients, with men making up the remaining 33%. Nearly a quarter of participants — 23% — live in subsidized senior housing. The organization particularly focuses on serving low-income seniors and those with special needs, ensuring they have access to healthcare, social services, and community engagement opportunities.

The program takes a holistic approach to senior care, addressing physical, emotional, social, and spiritual well-being through regular check-ins, social activities, and advocacy. To reach isolated or unaware seniors, TLC

conducts outreach programs in coordination with local organizations and healthcare providers.

Since its inception, volunteers have contributed more than 13,000 hours of service, with visits averaging 1.9 hours each. The program has provided 99,564 miles of transportation service, including over 24,000 miles in both 2022 and 2023.

Data shows the program's friendship visits, representing 60% of all interactions, have yielded measurable improvements in client well-being, including reduced depression scores, better medical appointment attendance, and fewer emergency service calls among socially isolated seniors. The program actively connects seniors with resources such as Med Alert, seniors meals, exercise classes, and various service agencies.

The initiative has garnered robust community support. The Rotary Club has installed ramps and grab bars for clients, while the Lake Chelan High School soccer team has undertaken home improvement projects such as house painting.



The Lions Club contributes holiday gift cards and meals to provide joy to seniors. A local veterinarian provides low-cost

spaying services, and the program has received grants to provide special social events, including Christmas sing-alongs, storytelling sessions, Valentine's Day parties, and Irish Dancers performances.

TLC receives referrals from various sources, including physicians, hospitals, clinics, hospice services, emergency medical services, and the Chelan Valley Community Nurse. Additional referrals come from Chelan Valley Hope, the senior center, Aging and Adults services, as well as family and friends.

The program offers transportation for medical appointments, advocacy at appointments, assistance with personal appointments, shopping support, and help with household chores. Volunteers also provide respite care for family caregivers, allowing them time for errands and self-care to prevent caregiver burnout.

Those wishing to support TLC's mission can send donations to TLC for Seniors at PO Box 2852, Chelan, WA 98816. Donations help fund essential services, including transportation, social activities, and support programs for vulnerable seniors in the Chelan-Manson area.

For more information, contact Sandy Zimchek at 509-699-9042 or write to TLC for Seniors, PO Box 2852, Chelan, WA 98816.

## Upper Valley MEND

**Non-Profit Name:** Upper Valley MEND  
**Mission statement:** Our mission is meeting each need with dignity.  
**Brief description of your nonprofit:** Upper Valley MEND has served vulnerable residents of the Upper Wenatchee Valley and Cashmere since 1988. Our vision is a community where everyone has equitable access to food, housing, wellness, and economic security. MEND's services include free healthy food through the Community Cupboard food pantry, access to healthcare and affordable housing, plus financial assistance and resources for those in crisis. Through these programs, we empower people to overcome challenges and build sustainable futures while fostering a more diverse and engaged community.  
**Year established:** 1988  
**Geographic area served:** Upper Wenatchee Valley and Cashmere  
**Key programs or services:** Community Cupboard food pantry, Financial Assistance Program, Affordable Housing, Upper Valley Free Clinic, Das Thrift  
**How can the public support you?** Volunteers are the backbone of what we do! Learn more about volunteering at [uvmend.org/volunteer](http://uvmend.org/volunteer). Support our programs with a donation at [uvmend.org/donate](http://uvmend.org/donate). Donate clean, gently used items or shop at Das Thrift, our nonprofit thrift store in Leavenworth. Or visit Jubilee Global Gifts.  
**Contact Information:**  
**Address:** PO Box 772, Leavenworth, WA 98826  
**Phone:** (509) 548-0408  
**Email:** [info@uvmend.org](mailto:info@uvmend.org)  
**Website:** <https://www.uvmend.org/>  
**Social Media Links:** Instagram: @uppervalleymend, Facebook: UVMEND  
**Contact Person:** Hillary Clark, [hillary@uvmend.org](mailto:hillary@uvmend.org)

## Lake Chelan Museum of Wildlife

**Non-Profit Name:** Lake Chelan Museum of Wildlife, Natural History, and Art  
**Mission Statement:** Our mission is to increase knowledge and appreciation of the diverse wildlife of the world and to educate the public about the role art and wildlife management play in conserving these valuable resources. The museum provides a place to learn and study the relationship between man, wildlife, and the environment.  
**Brief description of your nonprofit:** The museum features about 150 taxidermy animals and birds from North America, Africa, Asia, and New Zealand. The life size animals are displayed in dioramas with native habitats, mounted by highly skilled taxidermists, with murals painted by talented artisans. Viewers can learn about wildlife management and the role artists and hunters play in preserving wild places and wild animals for future generations. Guests can learn about the wonder of wildlife and their habitat with the merger of science, technology, and art. The art gallery features work from local, regional, and international artists showing paintings, photography, and sculptures. An extensive Fire Ecology exhibit with photos documenting the historical fire disturbances common in the Pacific Northwest. The museum has a multi-purpose room for classes, special events, private functions, events for community organizations, and fund raising events. The education center is used for school field trips, hunter safety classes, sportsmen clubs, art classes, and a future archery range.  
**Year Established:** 2023  
**Geographic area served:** Pacific Northwest  
**Key programs or services:** Site for school field trips, hunter education lessons, wildlife and habitat education, artist workshops. The displays are appropriate for all ages of school children, parents, senior citizens, outdoor enthusiasts, hunters, anglers, biologists, and other scientists. Archery classes will be taught next spring.  
**How can the public support you?** Financial donations. Volunteer docents, artist shows of various works for display and sale.  
**Contact Information:**  
**Address:** 21285 Highway 97Alt., Chelan, WA 98816  
**Phone:** 509-670-8081  
**Email:** [info@natureswindowmuseum.com](mailto:info@natureswindowmuseum.com)  
**Website:** [natureswindowmuseum.com](http://natureswindowmuseum.com)  
**Contact Person:** Shannon Koblmeier

## Chelan Basin Conservancy

**Non-Profit Name:** Chelan Basin Conservancy  
**Mission Statement:** Promote and facilitate conservation of, and public access to, Lake Chelan and the surrounding Valley by partnering with private and public organizations to achieve our mutual goals.  
**Brief description of your nonprofit:** Chelan Basin Conservancy (CBC) was formed in 2011 to be a permanent organization dedicated to protecting the splendid beauty of Lake Chelan. We are a committed grassroots group with the mission of promoting conservation and public access to Lake Chelan.  
**Year Established:** 2011  
**Geographic area served:** The Lake Chelan Valley  
**Key programs or services:** 1) Increasing public access to Lake Chelan, 2) mitigating aquatic invasive species, 3) addressing lead/arsenic from old orchards, and 4) preserving Chelan Butte.  
**How can the public support you?** By becoming at CBC member and/or providing financial assistance.  
**Contact Information:** P.O. Box 1073, Chelan, WA 98816  
**Phone:** N/A  
**Email:** [chelanbasinconservancy@gmail.com](mailto:chelanbasinconservancy@gmail.com)  
**Website:** [chelanbasinconservancy.org](http://chelanbasinconservancy.org)  
**Social Media Links:** Facebook  
**Contact Person:** Brian Patterson - President

## PLAIN VALLEY SKI TRAILS

Your support, along with the net proceeds from day and season passes, helps fund the barrier-free, year-round ski education program: the Plain Valley Nordic Team (PVNT).  
**Donate today, visit [SkiPlain.com](http://SkiPlain.com)**

## Village Art in the Park

Nonprofit organization supporting students and the Arts since 1966

**Community Art Support in 2024**  
**\$42,500**

- \$27.5K in Arts Scholarships**
- \$8.5K in Art Supplies to Cascade School District**
- \$4K in Classroom Art Grants**
- \$2.5K in Grants to local artists**

Donate Here →

[villageartinthepark.org](http://villageartinthepark.org)  
 Leavenworth, Washington



## Plain Valley Ski Trails

**Non-Profit Name:** Plain Valley Ski Trails  
**Mission Statement:** Plain Valley Ski Trails' mission is to create and sustain a high-quality ski trail system that serves the community and funds barrier-free ski educational programs, motivating individual and team achievement.  
**Brief description of your nonprofit:** Thanks to the collaboration of generous landowners, we maintain 25km of daily groomed ski trails at Plain Valley Ski Trails. The net proceeds from PVST pass sales, alongside donations and grants, directly support PVNT's youth ski education programs.  
 Founded in 2015 with just five kids, PVNT now offers year-round programs for over 120 children, providing equipment, travel, and scholarships for barrier-free access to skiing. Our program includes four levels of learning, catering to ages 2 through 18.  
 We also offer adult programming, including ski clinics, and the Plain Valley Adventure Women (PVAW) program. PVAW features summer and winter activities that bring women together to explore the environment, the arts, and improve outdoor skills in a fun, supportive setting.  
**Year established:** 2011 (trails) 2018 (non-profit public charity)

**Geographic area served:** Chelan County  
**Key programs or services:** Plain Valley Nordic Team  
**How can the public support you?:** SUPPORT the youth ski education program and enjoy winter by buying your 2024-25 Season Pass or Donate [HERE].  
**Contact Information:**  
 Address: 215 Lois Lane  
**Phone:** 509-860-5420  
**Email:** Director@SkiPlain.com  
**Website:** www.SkiPlain.com  
**Social Media Links:** <https://www.facebook.com/plainvalleyskitrails>  
<https://www.facebook.com/plainvalleynordicteam>  
<https://www.instagram.com/plainvalleyskitrails/>  
<https://www.instagram.com/plainvalleynordicteam/>  
**Contact Person:** Christie Wilder, Executive Director



## Village Art in the Park

**Non-Profit Name:** Village Art in the Park  
**Mission Statement:** The mission of Village Art in the Park is to produce and manage a quality seasonal art attraction in Leavenworth as a means to support art education and continued development of the arts in our community.  
**Brief description of your nonprofit:** Village Art in the Park is a nonprofit dedicated to supporting the arts and artists in our community. Proceeds from our market fund scholarships and provide vital support for arts programs in the Cascade School District. To date, we've awarded over \$100,000 in scholarships and grants, funded art supplies for every student in the district and even supported an elementary art teacher for many years.  
 Our outdoor market, held May through October in downtown Leavenworth, showcases a vibrant mix of emerging and professional artists. Each weekend you'll find vivid paintings, stunning photography and handcrafted jewelry and metalwork you won't want to miss.  
**Year established:** 1966  
**Geographic area served:** Cascade School District  
**Key Programs or services:** Arts Scholarships: 1-4 awarded annually to students pursuing higher education in the arts up to \$10K each.  
**Enriched Education Fund:** \$2.5K awarded annually to a school in the Cascade School

District  
**Classroom Art Grants:** \$100 per teacher, available to every teacher in the district for art supplies  
**K-8 Art Supplies:** In 2024, Art in the Park funded all art supplies for Peshastin-Dryden Elementary, Alpine Lakes Elementary and Icicle River Middle School.  
**How can the public support you:** By visiting art from May-October or donating directly.  
**Contact Information:**  
 Address: Front St, Leavenworth, WA 98826  
**Phone:** 509-548-5809  
**Email:** callie@villageartinthepark.org  
**Website:** <https://www.villageartinthepark.org>  
**Social Media Links:** @villageartinthepark (facebook & insta)  
**Contact Person:** Callie Baker



# The link between volunteering and academic performance



STOCK PHOTO

There are many reasons for parents to encourage children who express an interest in volunteering. Volunteering is a social activity that can help children develop their social and networking skills, and many parents credit volunteering with instilling a sense of perspective in their children that they might not have gained had they not been exposed to people from different backgrounds. Volunteering also has been linked to stronger academic performance. The Corporation for National and Community Service reports that students

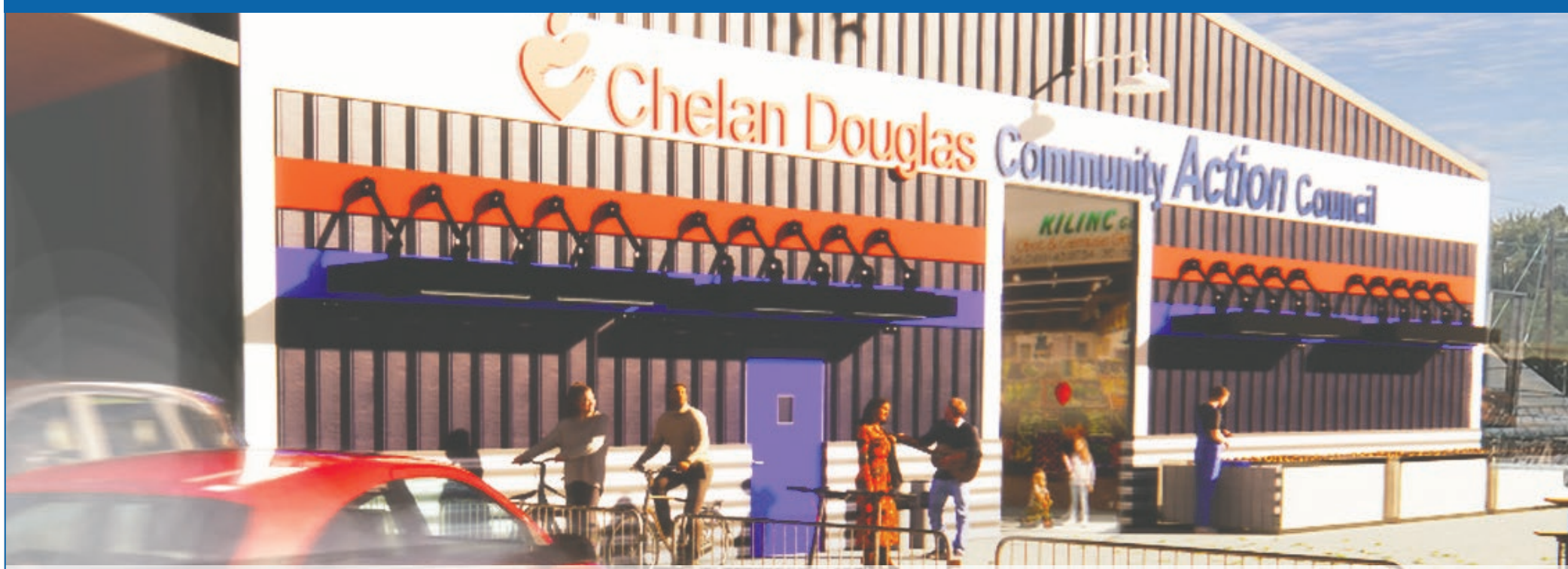
who indicate they're doing better in school are more likely to be volunteers than students who report doing less well. The broadened exposure to people and places that students may otherwise not encounter without volunteering also can benefit them in the classroom, helping them more readily identify with cultures and societies they're studying. College applicants with volunteering experience also may set themselves apart in the increasingly competitive application process. Though a 2019 Pew Research study reported that most schools

admit more than two-thirds of their applicants, that figure is significantly lower at many of the more highly rated institutions in the United States. For example, Stanford University (4.3 percent) and Harvard University (4.9 percent) recently reported acceptance rates below 5 percent. Though volunteering alone won't help applicants gain acceptance to such competitive institutions, it can serve as a strong résumé builder and be even more effective if it also produces the previously noted improvements in academic performance.

# Our New Home Is Taking Shape Be Part of the Final Phase



**Building for the Future**, a Facility to meet the needs of our neighbors for the next 60-years. Empowering over 11,000 people to help themselves and each other every year.



A generation of leaders started Community Action 60-years ago, now, is the time to secure the next 60-years. Be part of the Next Chapter, help expand services and our impact. Join donors who have raised over \$6,000,000 raised to date.



**Chelan Douglas  
Community Action Council**  
 620 Lewis Street, Wenatchee, WA 98801  
 Phone: (509) 662-6156  
[cdcac.org](http://cdcac.org)



SPONSORED CONTENT

# Chelan Basin Conservancy works to preserve Chelan Butte

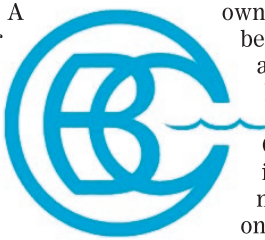
The Chelan Basin Conservancy (CBC), a 501(c)(3) nonprofit with over 120 members and an active board of directors, works toward their vision "To have ample public open space, public lake access, and a clean, safe environment for future generations of residents and visitors of the Lake Chelan Basin to enjoy."

The organization pursues four key focus areas through CBC-directed projects and collaborations with other local nonprofits and governmental entities. Their most time-intensive initiative involves preserving up to 900 acres of undeveloped land on the Chelan Butte for public recreational use, such as hiking, mountain biking, and snowshoeing, and for wildlife habitat. A potential developer from western Washington is currently opposing these efforts, seeking instead to develop residential housing

likely intended for tourist accommodations.

The CBC reports that 3,200 members of the public have signed their online petition to protect the land from development, which they cite as evidence that "the vast majority of the local community wishes to see the north face of the Chelan Butte preserved for public use."

The organization recently completed a comprehensive study examining various aspects of potential land acquisition, including public land use preferences, funding procurement methods, costs associated with land and trail stewardship, and liability considerations. CBC is presenting these findings to the City of Chelan to demonstrate that city ownership would not be burdensome from a financial and labor perspective.



Beyond the Chelan Butte initiative, the nonprofit focuses on three additional

areas: mitigating the impacts of aquatic invasive species on Lake Chelan, improving and increasing public access to Lake Chelan, and addressing the impact of lead and arsenic soil contamination associated with legacy orchard lands.

The CBC has established important and ongoing partnerships with various entities, including the Lake Chelan Research Institute, the Washington State Department of Ecology, Keep It Blue Lake Chelan, and the City of Chelan. The organization has also collaborated on land conservation efforts with the Trust for Public Land, the Chelan-Douglas Land Trust, and the Lake Chelan Trails Alliance.

The organization continues to seek community support through its website at [chelanbasinconservancy.org](http://chelanbasinconservancy.org), where interested parties can sign the online petition to preserve the Chelan Butte, join their email list for updates about the preservation effort, and make donations to support their cause.



## Wenatchee River Institute

**Non-Profit Name:** Wenatchee River Institute  
**Mission statement:** We connect people, communities and the natural world.  
**Brief description of your nonprofit:** The Wenatchee River Institute (WRI) believes the greatest hope for the future is through connecting people, communities and the natural world. We engage thousands of learners (of all ages) annually through transformative environmental education on our campus in Leavenworth and across North Central Washington. Each experience is created to help participants understand their environment and discover the impact they can have in the world and their community. Whether it is searching for salmon in the Wenatchee River, spotting a white-headed woodpecker on a nearby Ponderosa Pine, or finding the perfect chanterelle mushroom in the forest, these interactions with nature will create a ripple of care for the natural world. With our Pay What You Can fee structure and our hybrid offerings, these natural experiences and opportunities are open to people of all backgrounds and walks of life.  
**Year established:** 2004  
**Geographic area served:** North Central Washington  
**Key programs or services:** WRI has a variety of environmental education programs for all ages. In WRI's Youth Programs, educators visit schools around NCW through the Traveling Naturalist in the Classroom Program, After School Program, and Traveling Planetarium. Students also visit our campus for Field Day Programs with schools and day

campus during school breaks. In Community Programs, we offer workshops, field trips, hands-on experiences, nature walks, Red Barn Events, and our E. Lorene Young Community Garden.  
**How can the public support?** WRI has several volunteer opportunities year-round helping with youth and community education, campus maintenance, event planning, board service, and more. You can support us this work by attending an event, telling a friend, volunteering with us, or donating towards our mission. Let us know if you want to learn more!  
**Contact Information:**  
347 Division St / PO Box 2073  
Leavenworth, WA 98826  
**Phone:** 509-548-0181  
**Email:** [info@wenatcheeriverinstitute.org](mailto:info@wenatcheeriverinstitute.org)  
**Website:** <https://wenatcheeriverinstitute.org/>  
**Social Media Links:** Facebook: <https://www.facebook.com/WenatcheeRiverInstitute>  
Instagram: [@thewenatcheeriverinstitute](https://www.instagram.com/thewenatcheeriverinstitute)  
**Contact person:** Rande Zenger ([rzenger@wenatcheeriverinstitute.org](mailto:rzenger@wenatcheeriverinstitute.org))



## Lake Chelan Research Institute

**Non-Profit Name:** Lake Chelan Research Institute, Keep It Blue-Lake Chelan  
**Mission Statement:** Establish the long-term trends in the water quality of Lake Chelan in the context of land use and climate change.  
**Brief Description of your nonprofit:** Support lake stewardship by collecting of key water quality data regularly. Explore Lake Chelan and its watershed. Understand the underlying hydrodynamic and biological processes that control the lake's water quality.  
**Year established:** 2017  
**Geographic area served:** Lake Chelan Watershed  
**Key programs or services:** Water quality measurement and data analysis, Environmental education, Assess threats to Lake Chelan's water quality, public outreach.  
**How can the public support you:** Volunteering, we have a wide range of volunteer roles.

Donations in any amount. Caring for our lake, no trash, decrease fertilizer use, clean, drain, dry, etc.  
**Contact Information:** PO Box 202, Chelan WA 98816  
**Phone:** 509-531-2987  
**Email:** [philllong@nwi.net](mailto:philllong@nwi.net)  
**Website:** [www.lakechelanresearchinstitute.com](http://www.lakechelanresearchinstitute.com)  
[www.KeepItBlueLakeChelan.org](http://www.KeepItBlueLakeChelan.org)  
Note that the fiscal sponsor for both LCRI and Keep It Blue is Lake Chelan Recreation Development Foundation.



### Quality Healthcare Starts With You

**Join Us in Supporting Our Community Hospital**  
Get started helping right now. Help us help our entire community. We have many ideas to help make Three Rivers Hospital an even better place to receive the highest quality care, but we need your support.

**Ready to help your community?**  
Turn your energy into action: Volunteer or make a Monetary Contribution today!

**Make a Difference Today with a Legacy Giving, Tribute or Celebration Gift**

**How To Give:**  
**By Mail:** Three Rivers Hospital Foundation, PO Box 455, Brewster, WA 98812  
**Online:** [www.threerivershospitalfoundation.org](http://www.threerivershospitalfoundation.org)




## Lake Chelan Museum of Wildlife, Natural History & Art Gallery



### An Enchanting Destination

**"The mission of the non-profit museum serves as an education center for wildlife conservation and to increase knowledge and appreciation for the diverse wildlife of the world. It informs the public about the role art and wildlife management play in conserving these valuable resources."**

Nature's Window is the merger of science, technology, and art that spell out in vivid animal habitat dioramas -- the vital teaching tools of conservation.

**"Preserving our wilderness and the natural world around us is more critical than ever. What's more, it is a responsibility of all citizens."**

Open to the public Wednesday through Sunday from April to October. Available for private functions, special events, a meeting place, reception site, and fund-raising events. As an education center, Nature's Window is proven for hunter-safety lessons, scout meetings, sportsmen's clubs, school field trips, and art classes.

21285 Highway 97A, Chelan, WA 98816, north of the Knapp's Hill Tunnel, approximately 10 minutes south of Chelan and 45 minutes north from Wenatchee, 509-670-8081, email: [info@nwwildlife.com](mailto:info@nwwildlife.com) or [natureswindowmuseum.com](http://natureswindowmuseum.com).



Lake Chelan Museum of Wildlife, Natural History, and Art is a registered 501(c)(3) non-profit organization. © 2024 All rights reserved.

Grateful to Support These Incredible Nonprofits in 2024

- Central Washington Disability Resources
- Chelan Douglas County Volunteer Attorney Services
- Friends of the Pool, Lilies of the Valley
- Stage Kids, & Tierra Learning Center

This Giving Tuesday, JLP Solutions celebrates our 2024 nonprofit clients, whose work strengthens and uplifts our communities. We are honored to support their missions through executive coaching, organizational assessments, strategic planning, funding support, governance, training and support services.

Make Your Gift Count This Holiday Season!



**JLP Solutions**  
A Nonprofit Consulting Firm  
[helpingnonprofitsthive.com](http://helpingnonprofitsthive.com)



# How to start an employee volunteer program

Passion for volunteering is commendable. Some individuals are so excited about the prospects of giving back that they may want to recruit more people to help. Such individuals may find that their place of employment is a great place to spearhead volunteer recruitment efforts.

Companies are diverse, but they also tend to attract like-minded individuals, which can make it easier to recruit potential volunteers. Business owners or human resources personnel looking to strengthen relationships

among employees and give back to their communities can consider beginning volunteer programs at work. Here are some tips to begin this journey.

### Involve leadership

It's important to get the backing and approval of company leaders before starting a volunteer group. Since you may be using company resources and infringing on some company time, make sure that higher-ups are supportive. They also may be able to let organizers know whether a certain cause is complementary to

the company mission or if it infringes on their mission. For example, a company that produces plastic products may not mesh with volunteer groups that have negative things to say about plastic products.

### Choose a cause to support

While national nonprofits are worthy of support, employees may be more excited about partnering with local initiatives. Human resource departments or the employees who are starting volunteer programs at work can poll workers on which

causes to stand behind. For example, a company that produces outdoor recreation clothing and equipment might want to support local efforts that focus on conservation in nearby parks. If a company has a strong stance on education, gear volunteerism around providing supplies for students or improving technological resources in schools.

### Establish when volunteerism will take place

It's best to have ground rules about how much of

the employer-supported volunteer work will occur after hours. Some companies may be amenable to having a certain pocket of time taken from the work day, such as establishing Early Dismissal Fridays for volunteers. Employees can base their participation on how it will affect their schedules.

Establishing a volunteer program at work can be a great way to get involved and build strong relationships within the community.

### Start recruiting volunteers

Reach out to employees

and spell out the program's mission during your recruitment efforts. This may be a task that the human resources department can help with. If the company has a department that organizes employee engagement activities, then that group would be a valuable resource as well.

It is also important to think about where volunteers may fit in. Assigning jobs and figuring out how many volunteers and man-hours will be required to complete tasks can provide a greater sense of the scope of the venture.



STOCK PHOTO

**TRANSFORM LIVES WITH YOUR DONATION**

Tierra Learning Center provides life-changing programs for adults with developmental disabilities including an Adult Family Home, Employment Services and Recreational Programs. Please consider supporting Tierra on Giving Tuesday.

[www.TierraLearningCenter.org](http://www.TierraLearningCenter.org)



509-548-6880, ext. 266

**DONATE NOW**