

# Lake Chelan Mirror

\$1.00  
Volume 133 No. 31

Lake Chelan & Entiat Valley News Since 1891  
A Ward Media Publication

www.lakechelanmirror.com



**From the publisher**  
Cutting through the noise | **A2**

Homeless Housing Network sets up shop in Wenatchee, connecting at-risk families to community resources | **B1**



## Thrive Chelan Valley to open new teen center in Manson this fall

By **QUINN PROPST**  
Ward Media Staff Reporter

MANSON - Thrive Chelan Valley will open a new teen center in Manson this fall, expanding its mission to serve, empower, and advocate for all youth in the Lake Chelan Valley.

Thrive, a nonprofit organization, has operated a teen center in Chelan since 1999. Thrive executive director Stefani Morgan said the new center in Manson will offer the same resources and support as the Chelan location.

"There will be fun games, a clothing and hygiene closet, a little library, school supplies, dinners, snacks, and more," Morgan said.

The Teen Center will be located in the basement of the Manson United Methodist Church and will be funded by donations and grants. Thrive is also working to obtain grants that will help with staffing and operations costs, Morgan said.



COURTESY OF THRIVE CHELAN VALLEY  
**A teen receives homework help at the Chelan Teen Center.**

"We have a very generous valley, and they love to support our students," she said.

Thrive Chelan Valley's mission is carried out through three core programs. The first is the Cares Program, which provides tangible items to help remove barriers for local students.



COURTESY OF THRIVE CHELAN VALLEY  
**Teens decorate cookies at the Chelan Teen Center.**

Items include weekend meal bags, athletic gear, school supplies, warm clothing, hygiene items, and more.

The second program is the Mentoring Program, which serves middle and high school students from both Chelan and Manson.

"We match them 1:1 with a safe and

caring adult who can help them navigate this sometimes complicated time in life," Morgan said.

The last program is the Teen Center. The Chelan center is open Tuesdays and Thursdays from 3:15 to 6:30 p.m. It offers dinner, often donated by local restaurants and community members. Students can hang out with friends, play games, get homework help, and access free hygiene, clothing, and snack closets.

The decision to open a center in Manson was driven by feedback from Manson students, who felt disconnected from the Chelan Teen Center.

"We really try to stay in touch with the students we serve, the school districts, our volunteers, and community members to see what is most needed," Morgan said.

"They really need all the same resources that we offer there," she said. "So, we decided to replicate our current

See **THRIVE CHELAN VALLEY** Page **B1**

State Senator Brad Hawkins calls for increased air assets and swift initial attacks to combat Chelan County wildfires

Ward Media  
Lake Chelan Mirror

WENATCHEE - As wildfires continue to ravage Chelan County, State Senator Brad Hawkins is calling for more air assets and initial attacks to address the region's long-term fire risks.

In a statement released on July 24, Hawkins emphasized the importance of swift air attacks in preventing large-scale damage and preserving air quality and the summer tourism season.

"We must get to the point where we put out fires soon after they start rather than just 'managing' them once they get burning," Hawkins said. "If we can't knock down these fires quickly, they just grow and grow, threatening homes, impacting air quality, and jeopardizing our economy."

Hawkins has been working with Department of Natural Resources (DNR) Commissioner Hilary Franz and other legislators to increase state wildfire funding. While he is grateful for the state mobilization authorized to assist on the current Pioneer Fire near Lake Chelan, he believes more resources are needed up front in the form of aircraft, particularly from the federal government, as much of Chelan County involves federal lands.

"The state has enhanced its air



SEN.  
**BRAD HAWKINS**

See **WILDFIRES** Page **B1**

## Vintage Cars and Hydroplanes draw crowds to Entiat's annual summer showcase



PHOTO COURTESY OF TIM AEMMER  
**Hydroplane racers race on the Columbia River at the Entiat Vintage Race Boat Regatta.** SEE STORY ON PAGE **B2**



PHOTO COURTESY OF ENTIAT CHAMBER OF COMMERCE  
**Classic car enthusiasts braved the heat to attend and show their vintage cars at the Entiat Classic Car Show. The event included live music, hydroplane races, food vendors and more.**

## Chelan faces December deadline to allocate remaining \$900,000 in ARPA Funds

By **MIKE MALTAIS**  
Ward Media Staff Reporter

CHELAN - The City of Chelan was reminded that the clock is ticking to commit the remaining funds it received through the America Recovery Plan Act (ARPA), created in March 2021 in the wake of the COVID-19 pandemic.

City Administrator Wade Farris told the July 23 bi-monthly city council meeting that it has until Dec. 31 to obligate the remainder of the \$1.2 million of ARPA dollars it received.

Farris explained the four ways the city can obligate the estimated \$900,000-950,000 in question.

1. Place an order for property and services or enter into contracts, sub-awards, and similar transactions that require payment. Preferably select projects, programs, or costs that have

a low probability of being canceled or changed.

2. Enter into an interagency agreement.

3. Apply to certain personnel costs for positions that existed and were filled prior to Dec. 31, 2024.

4. Apply to legal and administrative costs associated with the terms, conditions, and requirements of ARPA-SLFRF. (State and Local Fiscal Recovery Funds).

"We gave the food bank \$200,000-plus, and they spent it very wisely," said Farris. "We need to spend the rest of those funds."

Unobligated funds must be returned to the U.S. Treasury.

The SLFR program, authorized by ARPA, made \$350 billion to states, territories, localities, and Tribal governments, in response to the pandemic and dispersed nearly 100 percent of those

funds to more than 30,000 recipients.

City Clerk Peri Gallucci told the Lake Chelan Mirror that of the remaining city ARPA funds, about \$700,000 is earmarked for the Washington Street booster pump and another \$200,000-plus for the new Chelan Boys and Girls Club.

The city was not alone as the beneficiary of ARPA funds. Chelan County was awarded \$4.6 million disbursed by the county commissioners to the following agencies and programs:

- **Chelan Douglas Community Action Council** - \$162,500 to support the council's expansion of its food distribution center.

- **Chelan Valley Hope (including the food bank)** - \$277,900 to expand operations.

- **Common Ground Community Housing Trust** - \$350,000 to fund the acquisition of land for single-family

homes, duplexes, and townhomes.

- **Malaga-Colockum Community Council** - \$160,000 to support infrastructure improvements to the Malaga Community Park.

- **Our Valley Our Future** - \$109,250 to support the coordination and completion of three large-scale community initiatives related to regional housing; health, literacy, and outcomes; and early care and education programs.

- **Seven Acres Foundation** - \$699,300 for construction of the new Community Center at Lake Chelan.

- **Small Miracles Community Outreach** - \$33,750 to provide meals to children in the free or reduced school lunch program for meals during summer, spring, and winter breaks.

- **Community for the Advancement of Family Education** - \$297,500 to support CAFÉ's expanded community center.

- **Lake Chelan Lions Club Foundation** - \$22,800 to purchase audiometers that will be used to detect hearing and vision problems in school-age children and provide community screenings for low-income and disadvantaged populations.

- **Upper Valley MEND** - \$350,000 to acquire workforce rental housing units in Leavenworth.

- **Wenatchee Valley YMCA** - \$462,000 to the organization's capital campaign for a new facility.

- **Youth Dynamics** - \$75,000 to be split between renovations at the group's Stonewater Chalet in Plain and outreach efforts.

- **Center for Alcohol and Drug Treatment** - \$480,000 for land acquisition and construction of a new substance use disorder treatment facility in Chelan County.

- **Chelan-Douglas Health District** - \$653,679 for a variety of improvements, from infrastructure to programming.

Mike Maltais: 360-333-8483 or michael@ward.media

Elect **Brad Hawkins**  
**Chelan County Commissioner**  
District 3 - GOP  
Paid for by Hawkins for Commissioner, P.O. Box 1, Wenatchee, WA 98807

### Inside Lake Chelan Mirror this Week

A5 things to do this week.....A2  
Business & Service Directory B2  
Community Bulletin Board.....B2  
Church Guide.....B2  
Classifieds.....B3  
Kid Scoop.....B4  
Sheriff Report.....A3

\$100



29 S. Wenatchee Ave,  
Ste A, Wenatchee,  
WA 98801

www.lakechelanmirror.com

# Lake Chelan Mirror

© Ward Media, LLC 2024



WARD MEDIA

### On the Internet

Website:  
www.lakechelanmirror.com  
E-mail:  
news@ward.media

### Office hours

Hours: 9 a.m. - 5 p.m. except weekends, or call 509-682-2213

### Contact information

CEO & Publisher  
**Terry Ward**  
509-731-3284  
terry@ward.media

COO & Co-Owner  
**Amy M. Yaley**  
509-731-3321  
amy@ward.media

Multimedia Sales Manager  
**Sherrie Harlow**  
253-255-5920  
sherrie@ward.media

Multimedia Account Executive  
**RuthEdna Keys**

509-682-2213  
ruth@ward.media

Reporters/Photographers  
**Quinn Propst**  
quinn@ward.media

**Mike Maltais**  
michael@ward.media

**Circulation**  
509-293-6780

Laura Husa • laura@ward.media

### Deadlines

Calendar Listings	Noon, Friday
News Submissions:	Noon, Friday
Letters to the Editor:	Noon, Friday
Display Advertising:	5:00 p.m., Thur.
Legal Notices:	Noon Friday
Classified Ads:	Noon Friday
Obituaries/Death Notices	4 p.m., Friday

### Subscriptions Rates

Print & Online Subscription	\$45
Online-only Subscription	
12 Month	\$45.00
6 Month	\$22.50
3 Months	\$12.50
1 Month	\$5.00
1 Week	\$1.50

The Lake Chelan Mirror does not refund subscription payments except to the extent that it might fail to meet its obligation to publish each week, in which case the cost of the issues missed would be refunded as an extension. Subscriptions may be transferred to another individual or organization.



© Ward Media, LLC prints on recycled newspaper with soy ink. Please recycle.

### Letters policy

The Lake Chelan Mirror welcomes letters to the editor. All letters must be accompanied by the author's name, a home address and a daytime phone number (for verification purposes only). Letters may be edited for length, clarity, accuracy and fairness. No letter will be published without the author's name. Thank you letters will only be printed from nonprofit organizations and events. We will not publish lists of businesses, or lists of individual names. Email your letters to letters@ward.media.

### Corrections

The Lake Chelan Mirror regrets any errors. If you see an error, please call 509-682-2213. We will publish a correction on this page in the next issue.

### News tips

Have an idea for a story? Call the Mirror at 509-682-2213 email news@ward.media

### Classified Advertising

Classified ads can be placed during normal office hours by calling 509-293-6780 or by emailing classifieds@ward.media

### Legal Advertising

Legal ads can be placed during normal business hours by calling 509-293-6780 or by emailing legals@ward.media

### Obituaries

Obituaries can be placed during normal business hours by calling 509-293-6780 or by emailing obits@ward.media

### Services

Back Issues are available up to one year after publication for a small fee. Archive Research \$25 per hour

Lake Chelan Mirror (USPS 101-620) is published every Wednesday by Ward Media LLC, 29 S. Wenatchee Ave., Suite A, Wenatchee, WA 98801 Telephone: 509-731-4392 Periodical postage paid at Chelan, Wash. 98816 Postmaster: Send address corrections to: Lake Chelan Mirror 131 S. Apple Blossom Drive #109, Chelan, WA 98816

### Classified Weekly Rates

\$15.00 for first 30 words. 10 for each additional word over 30 words Borders, bold words, headlines, logos and photos subject to additional charges.

## Get your event in the spotlight with Ward Media!

If you have an exciting event to share, email Reporter Quinn Propst at [quinn@ward.media](mailto:quinn@ward.media). We'll showcase the five most captivating events of the week, giving your event the recognition it deserves. Even if your event isn't among the top five, it will still be added to our events calendar and featured online. Don't miss this chance to make your event shine!



### Nomad Food Truck

The Nomad Food Truck will be at Endless Orchard in Chelan on Friday, August 2, from 2-6 p.m.

"Nomad's eclectic menu features a fusion of global flavors and street food favorites, all house-made with fresh ingredients," the event page states. "Pair these delectable dishes with our wide selection of handcrafted ciders for a perfect summer afternoon. We look forward to seeing you there."

For more information, visit [endlessorchardcider.com](http://endlessorchardcider.com).

### Live music by Juvany Malagar

The Chelan Ridge Winery in Manson will host live music

by Juvany Malagar on Friday, August 2, from 4 to 7 p.m.

The event page states, "Join us for live music by Juvany Malagar. Sip wine, and enjoy our made-to-order wood-fired artisan pizzas, charcuterie, and salad. Bring your family and friends for a fun afternoon at Chelan Ridge Winery."

For more information, visit [chelanridgewinery.com](http://chelanridgewinery.com).

### Friday Night Trivia at The Cove

The Cove Wine and Games in Chelan will host Friday Night Trivia on Friday, August 2, from 7:30-9:30 p.m.

"Enjoy a fun evening after a long work week filled with brain-teasing questions, friendly competition, and great

prizes," the event page states. Don't miss out on the fun; come join us for a night of entertainment and challenge paired with your favorite beverage."

For more information, visit [insidethecove.com](http://insidethecove.com).

### Entiat Makers Market

The Entiat Makers Market will be held on Saturday, August 3, from 10 a.m. to 3 p.m. at the Entiat Kiwanis Park.

"For those who appreciate local art and want to support our artist community, don't miss out on our exciting Entiat summer markets," the event page states.

5 THINGS TO DO THIS WEEK

"We can't wait to see you there."

### Farmers Market

The Chelan Evening's Farmers Market will be held on Thursday, August 8, from 2 to 6 p.m. at Riverwalk Park. "Enjoy numerous vendors

carrying fresh fruit, veggies, flowers, crafts, food trucks, live music, and so much more," the event page states. "Each week is something a little different."

For more information, visit [chelanfarmersmarket.org](http://chelanfarmersmarket.org).

## Cutting through the noise

Recently, I had an enlightening conversation with my son, who grew up surrounded by the world of news. His insightful questions highlighted the same concerns many of our readers have about the reliability and integrity of the information we consume.



From the Publisher

**TERRY WARD**

doesn't mean they are immune to errors, but the presence of trained reporters and editors generally ensures a higher level of scrutiny compared to the often unchecked and rapidly shared content on social media.

### What happens when a journalist/reporter gets it wrong?

When journalists make mistakes, reputable news organizations have protocols for issuing corrections. Transparency is crucial; errors are acknowledged and rectified promptly to maintain credibility. The process may involve publishing a correction or retraction and updating digital content to reflect accurate information.

Since, by design, it takes longer than social media for news to get to places like television and print, do you find it to be a more politically neutral space?

The slower pace of traditional

news outlets allows for more thorough fact-checking and analysis, which can contribute to a more balanced presentation. However, neutrality also depends on the editorial policies of individual news organizations. It's essential to recognize that bias can exist in any medium, but the structured process of traditional journalism often helps mitigate it.

### Any tips for how to vet a news source?

Here's a guide to help you evaluate the reliability of any news source:

**Dig deeper than headlines:** With content flooding our feeds, take a moment to investigate the source before sharing. Be cautious of unfamiliar sites that may have emerged solely to influence opinions.

**Seek journalistic rigor:** Look for outlets that adhere to ethical standards even under the pressure of breaking news. Are they providing

context and verifying claims, whether about a political candidate or a community event?

**Demand transparency:** Reputable sources should be upfront about their methods, editorial processes, and reasons for focusing on particular stories or issues.

**Watch how mistakes are handled:** In the rush of news coverage, errors can occur. Trustworthy outlets will promptly correct misinformation, whether it's about election polls or local business updates.

**Evaluate coverage balance:** Assess how different perspectives are portrayed. Is there an obvious slant, or does the source strive for a fair representation of all sides of a story?

**Red flags to watch for:**

- Emotionally charged headlines that oversimplify complex issues
- Doctored images or videos of public figures and events
- Coverage that seems designed to inflame divisions

rather than inform

- Consistent focus on one side of debates while ignoring others

We encourage you to cross-reference information across multiple credible sources and remain skeptical of stories that align too perfectly with your own views.

Remember, quality coverage should inform, not merely confirm existing beliefs. As we navigate this landscape together, we reaffirm our commitment to factual, balanced reporting.

We invite you to hold us - and all your news sources - to these high standards. By fostering a well-informed community, we strengthen the foundations of our society.

Let's approach this season with critical thinking, open minds, and a shared dedication to uncovering the truth.

*Terry Ward is the CEO of Ward Media and the publisher of the NCW News, Cashmere Valley Record, Lake Chelan Mirror, The Leavenworth Echo, Quad City Herald, and the Wenatchee Business Journal. He can be reached at [terry@ward.media](mailto:terry@ward.media).*

## Chelan County imposes strict fire restrictions as wildfire danger escalates

Ward Media  
Lake Chelan Mirror

WENATCHEE - Chelan County officials have announced the implementation of Stage 2 fire restrictions, which went into effect on Friday, July 26, as wildfire risks escalate across the region.

The restrictions, affecting unincorporated areas of the county, prohibit residential campfires and target shooting outside of designated gun ranges.

These measures come as the county's Valley Zone fire danger rating has been elevated to "extreme," the highest level on the local scale.

Chris Pedersen, Chelan County Fire Marshal, emphasized the critical nature of the situation.

"With major wildfires now burning in Oregon and throughout Washington, fire-fighting resources may be stretched," Pedersen said.

"It's only July - we still have a lot of fire season to get through. We need everyone to do their part and not be the spark that causes a wildfire in our area."

The Mountain Zone remains at a "very high" rating, just below extreme.

Officials note that these ratings indicate increasingly fire-prone conditions in the affected areas.

Under Stage 2 restrictions, hunting remains permitted in open areas, and the use of commercial barbecues and camp stoves is still allowed.

However, the ban on outdoor burning of yard debris, in effect since June 1, continues.

County officials utilize a system of fire danger ratings and restrictions to inform the public about conditions and limitations during fire season, which typically runs from June 1 to October 1.

The current restrictions are outlined in Chapter 7.52 of the



### Chelan County Code.

As the region faces heightened fire risks, authorities urge residents and visitors to

exercise extreme caution and adhere to all fire safety regulations.

The restrictions will remain

in place until further notice, with the possibility of more severe measures if conditions worsen.

# SQUARE DANCE AT THE ORCHARD



STEHEKIN  
AUGUST 3  
6:00 PM

**CANCELED**

The *Chelanigans* return to the Packing Shed at the Buckner Orchard

- Always Entertaining

Professional Caller - Great Family Fun

FREE

Generously Supported By



FREE



Sponsored by the Buckner Homestead Heritage Foundation



Patty the Poo says

Don't make a mess! Use a pumpout station or mobile pumpout boat to dispose of your sewage.

Visit [PumpoutWashington.org](http://PumpoutWashington.org) to find the nearest pumpout with the FREE Pumpout Nav App or Pumpout Boat Tracker



Pumpout Washington is a project of Washington Sea Grant in partnership with Washington State Parks Clean Vessel Act Program. Funding is provided by U.S. Fish & Wildlife Service through the Sport Fish Restoration and Boating Trust Fund provided through your purchase of fishing equipment and motorboat fuels.

# Community Bulletin Board

## Local, Regional Community News & Events

Any non-profit 501(c)-(3) group, person(s). Must provide: full name, city, phone number. Items pertaining to local events that are free or minimum charge. Garage and Yard Sale Ads are paid events. To submit info call 509-682-2213 or email: [ruth@ward.media](mailto:ruth@ward.media)

### Meetings

#### Monday

**American Legion #108:** First Monday, 7 p.m., Manson Parks & Recreation Building, 142 Pedio St. Contact: Norm Manly, 509-293-0225.

**Manson Grange Youth Fairs Program:** Third Monday, 6 p.m., Manson Grange Building, youth 5th-8th grade. Contact: Norm Manly, 509-293-0225.

**Family and friends Support Group:** Third Monday, 7-8:30 p.m., Grace Lutheran Church, 1408 Washington Street, Wenatchee. Contact: 509-860-3620, website at: [tcfwenatcheevalley.org](http://tcfwenatcheevalley.org)

#### Tuesday

**Survivors of Suicide Loss Support Group:** Second Tuesday, 7-8:30 p.m., Grace Lutheran Church, 1408 Washington Street, Wenatchee. Contact: 509-860-3620, website at: [tcfwenatcheevalley.org](http://tcfwenatcheevalley.org)

**Lake Chelan Health Hospital board meeting:** Fourth Tuesday, 1:30 p.m., board room at Lake Chelan Health, 110 S. Apple Blossom Drive, in person or via the internet. Agenda, login information: [lakechelanhealth.org](http://lakechelanhealth.org)

**Manson Grange:** Fourth Tuesday, 5 p.m., Manson Grange Hall on Wapato Way. Contact: Norm Manly, 509-293-0225.

#### Wednesday

**Chelan Fire & Rescue Board of Commissioners:** Third Wednesday, 3 p.m., Station #71, 232 E. Wapato Ave., Chelan Meetings are in person and are held via ZOOM you can follow the link: <https://us02web.zoom.us/j/87284665516>. Meeting ID: 872 8466 5516 or dial +1 253 215 8782/ Contact: Misty Fifield, Administrative Assistant, 509-682-4476. Agenda at [chelan7.com](http://chelan7.com)

**Death Cafe Chelan:** Third Wednesday, 11:30 a.m.-12:30 p.m., Chelan Public Library, 216 N. Emerson Street. Contact: Concie Luna or Vita Monteleone at [monte419@nwi.net](mailto:monte419@nwi.net).

#### Thursday

**Lake Chelan Lions Club:** First and Third Thursdays, 9 a.m., Manson Parks Building, 142 Pedoi St.

**Chelan Valley Republican Women:** Second Thursday, 6:30 p.m., Radiance Winery, 71 Wapato Way, Manson. Guests, non-members, men welcome. Food, wine, beverages available for purchase. Arrive early so you have time to order. More info: Pam James, club president, 425-343-2911.

**Family Caregivers/Support Group:** Third Thursday, 10 a.m.-11:30 a.m., Lake Chelan Chamber of Commerce,

Coldwell Banker Board Room, 216 E. Woodin Avenue, Chelan.

#### Friday

**VFW #6853 Post Coffee/Donuts.** Every Friday, 9-11 a.m., 427 S. Bradley Street, donuts, coffee and conversation.

#### Other Events

**American Red Cross Blood Drive:** Wednesday, August 21, 12 p.m.-5 p.m., Lake Chelan United Methodist Church, corner of Johnson Avenue and Emerson, Chelan. For an appointment: [www.redcross-blood.org](http://www.redcross-blood.org) or 1-800-RED-CROSS / 1-800-733-2767.

**Free Blood Pressure Checks:** Chelan Valley Community Nurse program provide free, weekly blood pressure checks to the public 11:15 a.m.-12:30 p.m., Wednesdays, Chelan Senior Center, 534 E. Trow Avenue, Chelan. For info: Catharine at 509-679-9059, email: [chelanvalleycommunitynurse@gmail.com](mailto:chelanvalleycommunitynurse@gmail.com).

**Chelan Evening Farmers Market:** Chelan Farmers Market Thursdays, 2-6 p.m., at Riverwalk Park, corner of Wapato Avenue and Emerson Street. Enjoy 25-60 local vendors. Become a member or sign up for their newsletter [chelanfarmersmarket.org](http://chelanfarmersmarket.org). Runs through October 31.

**SAIL Exercise Classes:** SAIL (Stay Active & Independent for Life) fitness classes are offered at Chelan Senior Center on Monday and Wednesday, 1:15 p.m. Evening SAIL classes are Monday and Thursday evenings, 5:30 p.m., Chelan Senior Center. SAIL classes are offered to residents of Heritage Heights Assisted Living on Mondays and Fridays at 2 p.m.

**Chelan Valley Hope:** Chelan Valley Hope has recently expanded the service area to include Pateros. Visit Chelan Valley Hope at 417 S. Bradley Street Monday thru Thursday 9 a.m.-3 p.m. (closed Noon to 1 p.m.). Hope provides services at no cost to individuals and families in need. They are a local nonprofit serving Chelan, Manson, Chelan Falls, Waterville, Entiat, Bridgeport, Mansfield, Orondo and now Pateros. Call 509-888-2114 for more information or to schedule an appointment. Or visit their website and follow

us on Facebook and Instagram to get the latest Hope news and updates @Chelan-ValleyHope.

**Chelan Senior Meals:** Served at Chelan Senior Center, 534 E. Trow Avenue, Monday-Friday. Suggested donation for seniors over age 60 is \$5. Fee for persons under age 60 is \$12. Call 509-888-4440 to reserve meals 24 hours in advance. For information about Home Delivered Meals call 509-470-0522. Visit their website at [www.octn.org](http://www.octn.org). Follow them on Facebook.

**Chelan Museum:** The Chelan Museum on Woodin Avenue is open Tuesday-Saturday 11 a.m.-4 p.m. For information: 509-682-5644, or [chelanmuseum.com](http://chelanmuseum.com)

**Household hazardous waste drop off:** Chelan County Moderate Risk Waste Facility on Highway 97A in Wenatchee. Open the first Saturday of the month, 9 a.m.-4 p.m. Open Tuesday through Friday at the same hours. Free service to Chelan County residents. For the list of items that the facility does, and does not accept, go to <https://www.co.chelan.wa.us/solid-waste-management/pages/household-hazardous-wastes>

**Miller's Auto Museum:** Open Thursday-Saturday, 1-4 p.m. Entrance by donation only. Located at 20 Blue Water Lane in Chelan, off Hwy. 150 on the road to Chelan Falls. For more info: 509-679-9389

**Glass Recycle:** Rotary of Lake Chelan 911 Glass Rescue is open Saturday mornings 10 a.m. to noon, 23235 Highway 97A across from Walmart. A small fee per pound is charged for glass drop-off. Buckets of the materials produced, sand and aggregate, available for purchase at \$5 per 5-gallon. Information: [www.911glassrescue.org](http://www.911glassrescue.org)

**Food Bank food distribution:** Lake Chelan Food Bank food giveaway Saturday and Tuesday, 9 - 10 a.m. Drive through distribution at 417 S. Bradley Street. Families are limited to one box per week. Information: [lakechelanfoodbank.org](http://lakechelanfoodbank.org) Non perishable food donations may be dropped off at the Lake Chelan Mirror office, 131 Apple Blossom Drive, Suite 109 (Chelan Business Center).

## Chelan County Sheriff Report

### July 19

9:38:22 Parking/Abandon, Wapato Way & Green Ave, Manson  
11:18:44 Harass/Threat, 274 Quatas St, Manson  
12:37:16 Accident Unk, 200Blk S Sanders St  
13:23:45 Marine, 900 Foxglove Ln; Lookout M  
14:34:54 Domestic Distur, Lake Chelan City Area  
14:58:18 Civil, 316 E Okanogan Ave  
15:00:06 Hazard, S Lakeshore Rd Mp 2  
15:42:33 Welfare Check, 485 W Manson Rd; Don Morse  
16:47:55 Marine, 2230 W Terrace Ave; Lakes  
17:16:12 Trespass, 106 W Manson Rd; Safeway C  
20:38:30 Warrant, W Woodin Ave & N Water St  
20:40:06 Domestic Distur, 34 Ford St, Manson  
21:10:00 Noise, 104 W Woodin Ave; Campbell  
21:51:49 Traffic Offense, Sr 150 Mp 7.

### July 20

0:43:25 Traffic Offense, W Webster Ave & S Farnham  
2:01:58 Theft, 455 Wapato Lake Rd; 12 Tribes  
2:08:10 Extra Patrol, 112 E Woodin Ave; Senor Frogs  
2:49:32 Assist Public, 207 N Emerson St; Chofc  
8:27:02 Welfare Check, 309 Sr 150; Willows Park  
9:31:11 Alarm, 820 Summit Blvd, Manson  
9:38:17 Burglary, 218 Jackrabbit Ln  
9:55:52 Harass/Threat, 303 S Clifford St  
10:28:55 Trespass, 912 E Okanogan Ave  
12:52:30 Assist Public, 207 N Emerson St; Chofc  
13:16:50 911, 455 Wapato Lake Rd; 12 Tribes  
13:37:33 Assist Public, 432 E Wapato Ave  
15:56:47 Juvenile Proble, 409 W Manson Rd; Lakeshore  
16:06:20 Theft, 201 E Woodin Ave; Lush Life  
16:25:42 Marine, 322 W Woodin Ave; Grandview  
16:39:11 Marine, Rocky Point, Manson  
17:04:51 Welfare Check, 1324 W Woodin Ave; Lakeshore  
17:15:36 Welfare Check, 323 W Manson Rd  
17:22:13 Marine, 260 Brimstone Ln  
18:22:25 Traffic Offense, Us Hwy 97A Mp 216, Entiat  
18:59:51 Assist Agency, 2230 W Terrace Ave; Lakes  
19:14:19 Traffic Offense, 142 Walnut St; Across The 2  
19:18:14 Traffic Offense, 122 S Emerson St; Local My  
19:44:14 Warrant, N Sanders St & E Chelan Ave  
20:27:06 Assist Public, 1324 W Woodin Ave; Lakeshore  
21:21:15 Traffic Offense, Us Hwy 97A Mp 217; Sb, Entiat

### July 21

0:40:21 Disturbance, 112 E Woodin Ave; Senor Frogs  
9:16:57 Civil, 2230 W Terrace Ave; Lakes  
11:16:09 Accident No Inj, 619 W Manson Rd# Ofc  
12:31:18 Parking/Abandon, 2230 W Terrace Ave  
12:37:55 Animal Problem, 108 N Apple Blossom Dr  
13:46:33 Animal Problem, 102 Waterslide Dr; Slidewaters

14:29:08 Marine, 2230 W Terrace Ave  
14:44:55 Civil, 2230 W Terrace Ave  
15:28:45 Suspicious, 116 E Chelan Ave  
15:37:47 Parking/Abandon, 2328 W Prospect St N  
17:34:10 Warrant 2117 Lakeshore Dr; Entiat  
18:04:03 Domestic Distur Washing-ton St & Manson Blv Manson,  
18:28:33 Disturbance 200Blk E Wapato Ave  
19:32:33 Suspicious, 210 E Wapato Ave  
19:42:58 Fireworks, Wapato Lake Rd Mp 2; Area, Manson  
20:38:16 Civil, 1002 E Woodin Ave; Apple I  
21:32:59 911, 101 Jackrabbit Ln; The Loo Ch

### July 22

1:25:58 Traffic Offense, 232 E Woodin Ave  
2:04:02 Assist Public, Chelan  
2:23:55 Harass/Threat, 170 Boetzkes Ave, Manson  
4:28:11 Trespass, 409 W Manson Rd; Lakeshore  
8:28:13 Burglary, 475 Wapato Lake Rd, Manson  
10:13:46 Sex Offense, Chelan  
10:23:43 Parking/Abandon, 792 N Bradley St  
11:11:37 Harass/Threat, 319 N Emerson St  
14:55:34 Welfare Check, S Lakeshore Rd Mp3  
15:03:51 Parking/Abandon, 103 N Park St  
15:07:33 Marine, 2230 W Terrace Ave; Lakes  
15:22:18 Scam, 527 Village Dr, Manson  
16:21:48 Marine, 2025 W Terrace Ave  
16:54:44 Marine, Mill Bay Boat Launch, Manson  
18:04:00 Parking/Abandon, 916 E Johnson Ave  
18:17:00 Domestic Distur, 418 E Woodin Ave  
18:51:43 Suspicious, Chelan River Bridge  
20:17:36 Property, E Wapato Ave & S Sanders School  
20:58:09 Civil, 418 E Woodin Ave  
21:12:12 Theft, 2230 W Terrace Ave; Lakes  
21:26:56 Assist Agency, Sr 971 Mp 11  
09:38:41 Civil, 7440 Entiat River Rd, Entiat

### July 23

0:26:51 Domestic Distur, 421 W Webster Ave  
2:23:55 Harass/Threat, 170 Boetzkes Ave, Manson,  
6:40:57 Parking/Abandon, Entiat River Rd Mp 1  
8:31:37 Alarm, 1275 Navarre Coulee Rd  
9:49:31 Civil, 137 Faulkenberry Ln  
10:05:09 Parking/Abandon, 34 Ariel Ln, Manson  
10:09:32 Welfare Check, 117 E Wapato Ave; Riverwalk  
10:18:58 Assist Public, 2350 Summit Blvd, Manson  
12:19:31 Lewd Conduct, 409 W Manson Rd; Lakeshore  
12:35:10 Traffic Offense, Sr 150 & Eldorado Dr  
13:18:47 Marine, 12200 S Lakeshore Rd  
14:20:22 Theft, 132 E Woodin Ave  
16:30:19 Miscellaneous, 350 Orondo Ave# 4  
18:34:55 Assist Agency, 1252 Idyll Spurs Ln  
19:17:06 Drugs, 300Blk N Columbia St  
21:40:11 Suspicious, N Wilson St & E Chelan Ave



22:05:58 Suspicious, 518 E Woodin Ave; Habitat  
22:07:24 Suspicious, 329 E Wapato Ave  
22:17:10 Domestic Distur, 649 Bill Oules Ln

### July 24

1:58:30 Trespass, 455 Wapato Lake Rd; 12 Tribes  
9:44:15 Miscellaneous, Manson, Manson  
10:47:53 Property, W Nixon Ave & W Manson Rd  
11:23:25 Assist Agency, 23233 Us Hwy 97A  
13:26:55 Weapons Violati, 142 Walnut St  
13:27:18 Domestic Distur, 649 Bill Oules Ln  
14:00:05 Alarm, 8238 S Lakeshore Rd  
14:28:06 Disturbance, Landing Park  
14:43:52 Harass/Threat, 200 Green Ave# 46, Manson  
16:18:13 Fraud/Forgery, 929 Sunrise Dr, Manson  
18:12:19 Extra Patrol, 60 S Bennett Rd, Manson  
18:32:17 Alarm, 4270 Us Hwy 97A  
18:47:48 Hazard, S Lakeshore Rd Mp 2  
19:54:06 Suicide Threat, 14825 Stoneridge St, Entiat  
20:10:33 Warrant, 295 Manson Blvd; Manson Olma  
20:34:05 Juvenile Proble, 4991 Manson Blvd, Manson  
20:49:58 Disturbance, 555 1St St; Chelan Falls

### July 25

0:10:17 Juvenile Proble, 485 W Manson Rd; Don Morse  
7:54:33 Disturbance, 612 E Woodin Ave; Town Tub  
8:17:08 911, 402 W Manson Rd# 405  
9:45:45 Fraud/Forgery, 133 E Woodin Ave; Stormy M  
9:47:48 Extra Patrol, 71 American Way Ln, Manson  
9:50:51 Court Order Vio, 824 E Woodin Ave  
10:19:14 911, 402 W Manson Rd# 110;  
10:38:09 Miscellaneous, 703 E Wapato Ave# 7  
13:41:16 Theft, 121 Stormy Mountain Way  
13:47:42 Assist Agency, 110 S Apple Blossom Dr; La  
14:04:23 Domestic Distur, 316 E Okanogan Ave  
14:50:42 Suspicious, Chiwawa River Rd & Fs 6200  
15:14:04 Assist Public, 108 N Apple Blossom Dr  
16:37:23 Traffic Offense, Us Hwy 97A & Entiat River  
17:06:26 Theft, 108 N Apple Blossom Dr  
17:52:30 911, 2122 Cammack Ave, Entiat  
18:10:26 Assist Public, 303 S Clifford St  
18:27:04 Noise, 270 Upper Joe Creek Rd;  
19:19:46, 315 E Wapato Ave  
19:44:15 Marine, Dan Gordon Bridge  
19:54:53 Noise, 270 Upper Joe Creek Rd  
20:28:13 Court Order Vio, 250 2Nd St# C, Chelan Falls  
21:22:56 Theft, 108 N Apple Blossom Dr  
21:50:53 Court Order Vio, 250 2Nd St, Chelan Falls  
21:52:27 Suspicious, Chelan Butte  
13:05:20 Marine, 260 Brimstone Ln

**Clean water for all! Get a free fuel bib!**  
Learn more about small oil spill impacts on water quality

Contact Washington Sea Grant Boating Program Specialist **Aaron Barnett**

Elect **Brad Hawkins**  
**Chelan County Commissioner**  
District 3 - GOP  
Paid for by Hawkins for Commissioner • P.O. Box 1 • Wenatchee, WA 98807

# WVC crafts new strategic plan to strengthen community and address equity

By **QUINN PROPST**  
Ward Media Staff Reporter

WENATCHEE – Wenatchee Valley College is developing a new strategic plan to enhance its community focus, address equity gaps, and maintain academic excellence.

WVC President Dr. Faimous Harrison seeks to develop a growth mindset and continuous improvement framework for the college.

He envisions WVC evolving into a stronger regional anchor, a key economic driver, and a student-centered, community-engaged college.

“So with that, one of our objectives right now, we’re in the process of working through a new strategic plan, and how we are repositioning the colleges instead of the brick and mortar of higher education right, the brick and mortar campuses, what we realize is that the college is our community,” he said.

“So clearly, it’s not to say that we’re not student-centered,” he said. “What it means is where do our students come from, our students come from the community. So we need to shift our lens to be, how are we more intentional in trying to meet students, meet their community where they are and really understanding the role that the college can play moving forward.”

As part of developing the new strategic plan, WVC is conducting an in-depth environmental scan and cross-ref-



Wenatchee Valley College President Dr. Faimous Harrison speaks at a graduation ceremony.

erencing with other area strategic plans to identify gaps and needs within the region.

The college is working with regional organizations and has partnered with an outside consultant to collect the data needed for the plan. Harrison said that data will be the guiding force for decisions.

Harrison plans to engage stakeholders more intentionally by developing programs, training, and degrees that meet high demand and support local businesses.

These initiatives present numerous exciting opportunities for growth and collaboration, he said.

Harrison views the college as part of a broader ecosystem, reflecting the community’s health and inspiring a shift in mindset to think of its responsibility of extending from cradle to grave.

This mindset contrasts with traditional liberal arts by em-

phasizing technology, competing priorities, and supporting first-generation English as a second language individuals.

Many students have competing priorities, whether it’s family, children, or multiple jobs, he said.

The strategic plan will examine how WVC works with stakeholders, residents, industries, and the community and how to meet them where they are.

“How do we become intentional and how do we support that seamless pathway, whether it’s credentials, whether it’s supporting businesses, ensuring that they have the employee with the skill sets that are needed to or for them to maintain their businesses as well as reach their potential and goal,” he said. “So that’s one of our roles as a public entity, that collective impact is critically important.”

Another main focus of the new strategic plan is disaggregating data and looking at equity gaps.

“So when you think about rural communities, when you think about zip codes, when you think about students, you know, from different backgrounds, when you think about different challenges, I mean, there’s so many different layers that we need to be intentional for,” he said. “So when you look at that type of data then you can be very prescriptive and strategic in identifying what resources and support that’s needed.”

WVC serves a large territory with over 10,000 square miles.

“One of the challenges, though, is, as you know, we’re the only education institution for such a large area,” Harrison said. “So we have to really be strategic in looking at partnerships.”

“When you think of rural communities, underrepresented areas, when you think of resources on the west side of the state versus the east side of the state, there’s a challenge there,” Harrison said.

“So usually in Washington state, what do we always hear?” he said. “We always hear Olympia, we always hear Seattle, right? We very rarely see, you know, east of the mountains as the focal point, right? So how do we change that narrative? How do we become intentional? You do that within a collective impact



The Van Tassel Center at Wenatchee Valley College. As WVC develops a new strategic plan, President Dr. Faimous Harrison aims to reposition the college as a community-focused institution serving the diverse needs of North Central Washington’s expansive region.

framework? So we’re starting that work.”

Rural communities face numerous challenges, including limited resources.

However, NCW has seen growth, so Harrison sees it as vitally important to support local industries, businesses, and the people who live here. One of the key questions the plan will focus on is how to effectively support the local ecosystem.

Because the school serves such a large area, the environmental scan is critical to understanding the diverse needs of different NCW communities.

For example, Wenatchee, Chelan, Omak, and Nespelam are all different communities with different needs that the college serves.

“So it’s not a cookie cutter approach that one size fits all,” he

said. “We have to be intentional in our efforts of supporting our students, supporting families, supporting the communities and supporting our region, and that’s a different lens.”

Quinn Propst: 509-731-3590 or quinn@ward.media



Wenatchee Valley College students enjoy a break between classes.

PHOTOS COURTESY OF WENATCHEE VALLEY COLLEGE

# Wildlife photographer Mark Peters to showcase work at Nature’s Window Museum

By **TERRY J. LABRUE, APR**  
Nature’s Window Museum

CHELAN – Eastern Washington wildlife photographer, Mark Peters, will show the second installment in a rotating art show at the Nature’s Window Museum in its 2024 art-gallery series. The fine-art photographer from Ephrata, WA captures the magical beauty of the outdoors and memorable wildlife that populate the high desert landscape.

Featured photographer Mark Peters studied the physics of photography and darkroom processing techniques at Eastern Washington University but is mostly self-taught.

“I have enjoyed nature photography for many years,” Peters said. “Originally, I was drawn to the natural beauty of landscapes, with their ever-changing color and textures resulting from the weather and seasons. But, since a child, my creative inspiration has grown to include wildlife. It seemed like a natural progression.”

“I believe that great images are important for bringing attention to the preservation of habitat for all species,” Peters said. “Especially Sage Grouse, which are a favorite subject of mine. I’ve been following a single flock of grouse in Douglas County for thirty years. Their numbers are dwindling – and

I trust my images can bring attention to their needs.”

The retired journeyman hydro technician at the Grant County PUD is a long-time resident of the wild region of Eastern Washington, where he has a front-row seat showing nature’s compelling drama. His son, Carsen, has also taken an interest in photography, accompanying him on several photography excursions and soon to the Pentel Region in Brazil.

Peters added, “Whether snapping photos in spontaneous succession with a handheld 35mm camera or planning and waiting for just the right moment with my bulky 4x5mm large-format camera mounted on a tripod, there are always feelings of emotion and utter

surprise. I appreciate that some shoots are luck, and others are a bust. You have to take it all in stride.”

Many of Peters’ fine art images are exhibited in Western galleries and museums and published in a variety of calendars, books, and nature magazines, including National Wildlife, Ranger Rick, Bugle, Mule Deer, Nature Photography, and Montana Outdoors. “I really like Montana Outdoors because their articles and photography are first-rate. They used my favorite bobcat photo in a recent color spread.”

“In the second installment of our summer art show, all of us at Nature’s Window are pleased to present Mark Peter’s photography in the museum’s art gallery,” said museum co-

founder Shannon Kollmeyer. The Peters show opens to the public on Thursday, August 1, from 11 a.m. to 5 p.m. and throughout the month.

Chelan-based residents, Shannon and Cris Kollmeyer established Nature’s Window Museum of Wildlife, Natural History & Art Gallery to serve as an education center for wildlife conservation and to increase knowledge and appreciation for the diverse wildlife of the world. The museum acts to inform the public about the role art and wildlife management play in conserving these valuable resources.

“We seek to engage our guests in the wonder of wildlife. It is the merger of science, technology, and art that tell the true and complete story,”

Kollmeyer remarked.

“In the museum,” said Kollmeyer, “Our true-to-life dioramas are reflections of animal habitats from around the world. The natural settings are vital teaching tools that we trust will lead to wildlife conservation. Visitors to the museum can learn about the species-management compact that artists and ethical hunters have in preserving wild places and wild animals for future generations.”

Among the new exhibits at the museum is an extensive Fire Ecology exhibition containing a wide range of professional photos and explanations by John Marshall documenting the historic fire disturbances that are common in the Pacific Northwest.



COURTESY OF NATURE’S WINDOW MUSEUM

Fine art photographer Mark Peters will debut a curated selection of his latest wildlife and landscape images at Nature’s Window Museum, starting August 1.

## NEVER WORRY ABOUT POWER OUTAGES AGAIN.



Proudly manufactured in the USA

Gain peace-of-mind with the most powerful line of home standby generators.



**Industry-Leading Comprehensive Warranty for Years of Worry-Free Performance**

When choosing a standby generator, check the specifications closely. Only Briggs & Stratton PowerProtect™ generators feature NGMax™ technology, delivering up to 12% more power on natural gas than the competition. For homes with natural gas, Briggs & Stratton is the ideal choice.

Standard Warranty of **7 YEARS**  
Warranty of **\$849 Value**



Call 1-877-597-7536

# Summer starts here!





**NORTHWEST SWAG WORKS**  
APPAREL & PROMOTIONAL PRODUCTS

White glove service so you can focus on your business.

509-731-3624

**Wildfires**

*Continued from page A1*

resources and has increased its contract pilots, but we will need more aircraft on fires of federal jurisdiction, like the Pioneer Fire. So much of Chelan County involves federal lands, so more aircraft from the federal government to mitigate threats on their lands would be helpful," he said.

The senator acknowledged that air resources are expensive but argued that the cost of managing fires throughout the summer and into the fall with hundreds of personnel and other assets is also significant. He suggested that having more aircraft pre-positioned in the region would help increase initial response times and support the state throughout the fire season, noting that Washington fires often compete with others in the western United States and British Columbia for air resources.

Hawkins has been in communication with various officials, including DNR's Hilary Franz, Congresswoman Kim Schrier,

US Senator Patty Murray's office, and Chelan County Commissioner Tiffany Gering. He expressed gratitude for their prompt responses and good communication.

Looking ahead, Hawkins proposed convening officials for a "wildfire summit" this winter to consider opportunities for the next fire season.

"I'm very grateful to all of the firefighters and support staff who helped protect north Wenatchee residents in mid-July and for the local, state, and federal personnel currently working the Pioneer Fire to support the communities of Stehekin and Manson," he added.

"Protecting structures and communities is extremely important with active fires, which is where the current focus must be, but a full analysis is needed over the coming months," Hawkins said.

"Figuring out what it will take to better attack these fires in the first few hours will be the key to keeping us safe, maintaining healthy air quality, and preserving our county's tourism opportunities."

**Thrive Chelan Valley**

*Continued from page A1*

teen center in Manson, so it would be within walking distance for Manson students."

Since Manson is so spread out, a shuttle, courtesy of Link Transit's Surplus Van Program, will be available to take students home afterward.

Thrive aims to open the Manson Teen Center by mid-October. The center will be open on Mondays and Wednesdays.

"Both teen centers are accessible to all students in the valley," Morgan said. "So that means any students that need the resources or a safe space to be, will have that available four nights a week now."

To meet the October opening goal, Thrive is looking to hire a part-time Manson Teen Center Manager and volunteers. Volunteering opportunities are flexible, allowing community members to contribute as their schedules permit.

"It's such an amazing thing to be a part of, so we try to be flexible so everyone can have



COURTESY OF THRIVE CHELAN VALLEY

**The Thrive Chelan Teen Center offers free school supplies to help remove barriers for local students.**

the opportunity to make these connections," she said.

For more information about volunteering or the job opportunity, visit Thrive Chelan Valley's Instagram and Facebook pages. Questions can also be directed to [executivedirector@thrivechelanvalley.com](mailto:executivedirector@thrivechelanvalley.com).

Quinn Propst: 509-731-3590 or [quinn@ward.media](mailto:quinn@ward.media)

# Homeless Housing Network sets up shop in Wenatchee, connecting at-risk families to community resources

By WILL NILLES  
Ward Media Staff Reporter

WENATCHEE – The Wenatchee Homeless Housing Network (HHN) opened at Link Transit's Columbia Station in Downtown Wenatchee. It aims to connect community members who are homeless or at risk of homelessness to various local resources. Through teamwork with a plethora of local organizations, the HHN works to help at-risk Wenatchee inhabitants find independence, stability, and housing to meet their individual needs.

The Homeless Housing Network operates the Coordinated Entry program, a federal and state mandate that prioritizes assisting the most vulnerable people within communities in acquiring access to housing services. Through Coordinated Entry, the HHN assesses each of its at-risk applicants to find the local programs and resources that will best help each person or family's unique situation. The HHN is then able to connect those assessed as high-risk to more urgent resources, expediting the process and creating a complex and active list of applicants receiving assistance.

Angie Ervin, the HHN's Coordinated Entry Lead, explained the network's crucial role in connecting local homeless people and those at risk of homelessness with vital resources while they wait for housing opportunities.

"And besides just the housing part, we have been able to give people a lot of resources to help them do things in the meantime. There's lots of things that people can do for themselves that they don't realize is out there for them. You know, not everybody necessarily needs a house right now and they don't realize there's other resources out there," Ervin explained, revealing other ways in which the HHN strives to protect locals from homelessness. "People

think they're getting kicked out of their house when they're just told 'you need to pay or you're gonna get kicked out.' So there's resources out there that can actually help them get through those payments in those situations. And so we can connect them to other resources that help them, that's a big part of our job as well. It's not just, 'let's get you into a house.'"

In helping so many individuals and families with varying worries, disadvantages, and disabilities, the HHN works alongside a massive team of organizations, including the Community Action Council, Women's Resource Center, and YWCA, to aid applicants not just with housing but also with food, employment assistance, and emergency shelter.

Chelan County Homeless Housing Program Manager, Amber Hallberg, commented on the teamwork required to tackle the many problems connected to local homelessness.

"There's a lot of community collaboration, a lot of collaboration between agencies," Hallberg noted, expanding on the HHN's intensive community coordination to find help for their applicants. "We actually have a standing meeting once a month called the case conference meeting. And the first part of the meeting is kind of getting updates from each other because so much changes at different agencies often. Then, the second half of the meeting, we have confidentiality agreements that we sign and data share agreements, then we're able to talk about the clients and about solutions for them. If they're just like on the cusp, but there might be just a piece they're missing, then we're able to kind of problem solve and help out each other."

Behind the HHN's front desk, Juan Loeza and Jon Davies work as Coordinated Entry administrative specialists, standing on the front lines of the HHN's mission to help connect



WILL NILLES/ WARD MEDIA

**The Homeless Housing Network Team (from left to right) Juan, Jon, Angela, and Amber take a brief moment of respite from their crucial work to pose for the camera.**

locals at risk of homelessness to essential community resources.

"One of the main things is taking inputs, so phone calls, web applications, emails, people trying to come in themselves in person," Davies described the often busy yet rewarding nature of his and Loeza's work. "Family members sometimes come in and say, 'we need help with someone...'" and then we process them and do an assessment to help sort them on our list according to various programs they're eligible for or have been viewed candidates for. Sometimes, when I hang up, it's already ringing again. I'll do like four [calls] in a row. It's pretty cool, it makes the day fly by."

Loeza described one of the biggest challenges that he and Davies face while trying to help people.

"The biggest challenge I would say would be when you have someone in a hotel and they have a certain time to be on the streets... as part of that, the biggest challenge is to try to find something fast when you just can't," Loeza explained, hoping to help every person who calls.

Another major challenge for HHN comes when trying to assist applicants who have not updated their contact information and who are thus extremely difficult to find when housing

has been allocated for them. Coordinated Entry Lead Ervin recommends that all Coordinated Entry applicants check in with HHN to update their information in order to ensure they can be reached by the time resources have been found.

In just the first two weeks of operation, the HHN has successfully housed four families with permanent housing. One particular family had specific medical needs and was in a dire situation, yet the HHN worked to secure indefinite housing for them. Each day, the HHN team and its many partners in the community work to provide homeless community members and those at risk of homelessness with the resources and hope to make it through the toughest of life's circumstances.

To contact the Homeless Housing Network, call (509) 464-9086 y para español, oprima el #2.

For more information about homeless housing resources in the Wenatchee Valley, visit <https://www.co.chelan.wa.us/board-of-commissioners/pages/housing> and <https://www.wenatchee.wa.gov/services/community-housing-network>, or email Amber Hallberg at [amber.hallberg@co.chelan.wa.us](mailto:amber.hallberg@co.chelan.wa.us).

Will Nilles: (509) 731-3211 or [will@ward.media](mailto:will@ward.media)

Sponsored Content



## Erectile Dysfunction and Your Oral Health

(NAPS) – It is never a bad time to talk about erectile dysfunction (ED), even when you are at the dentist. Periodontal disease has long been connected to various systemic diseases including cardio-vascular disease, diabetes, rheumatoid arthritis and respiratory problems.

Recently, though, it has also been connected to erectile dysfunction, which can have a negative impact on the quality of life for patients.

Periodontal disease is an inflammatory infection of the gums caused by plaque and involves the supporting structures of the teeth.

Strong brushing and flossing habits can help prevent periodontal diseases, but a recent study shows that only about half of all Americans brush their teeth twice a day and floss daily.

"June is National Men's Health Month and is a great time to create good habits around brushing, flossing and overall health," said Kyle Dosch, DDS, Delta Dental of Washington's dental director and member dentist.

"Taking care of your oral health is about more than just having a nice smile; it also can positively influence your overall health."

According to the Centers for Disease Control, half of adults over the age of 30 have some form of gum disease and more than 70% of adults over 65 have periodontal disease. Gingivitis and periodontitis are the two main types of periodontal disease, which stem from plaque and tartar building up on a person's teeth, causing their gums to become swollen, painful and to bleed easily.

Advanced gum disease, or periodontitis, can cause a loss of bone mass in and around the tooth sockets and jawbone, which ultimately can lead to teeth becoming loose, falling out or needing to be extracted.

So, what does all of that have to do with ED? In a nutshell it means that while poor oral health doesn't cause erectile dysfunction, it can be an underlying issue.

Keeping your mouth healthy can help solve a number of health problems, such as ED, which includes difficulty getting and maintaining an erection, and reduced sexual desire.

A 2015 study conducted in Taiwan determined men diagnosed with erectile dysfunction were 80% more likely to have been diagnosed with chronic periodontal disease than men without erectile dysfunction.



**A visit to the dentist may give you more to smile about than you realize.**

This can happen because chronic inflammation caused by gum disease can damage cells which line your blood vessels, including the blood vessels in the penis. When these cells are damaged, it can result in impaired blood flow throughout the body, leading to erectile dysfunction. Chronic inflammation can also lead to impotence, diabetes or heart disease.

There is good news, though. While poor oral health may be associated with erectile dysfunction, a strong oral care routine may help in managing this condition.

- Ways to prevent gum disease include:
- Brush for two minutes, twice a day
  - Floss at least once a day
  - Schedule regular dental checkups and cleanings
  - Maintain a healthy diet and limit sugary food and drinks
  - Avoid tobacco use
  - Replace your toothbrush every three to four months

Studies around the world have shown that patients suffering from both moderate to severe erectile dysfunction and chronic periodontitis who received treatment for their gum disease reported that the severity of their ED lessened after just three months.

So, if you are experiencing symptoms of erectile dysfunction, you may want to mention this to your dentist. Your dentist is specifically trained to understand how issues with your oral health can impact your medical history, and vice versa.

For more information about oral health, visit Delta Dental of Washington's blog.

**Zero Handicap Golf Cart Services**

37895 Road J NE  
Coulee City WA, 99115  
**509-670-8860**  
[www.nwzerohandicap.com](http://www.nwzerohandicap.com)  
[gary@nwzerohandicap.com](mailto:gary@nwzerohandicap.com)



**Zero Handicap**  
Serving all your golf cart needs

## Profitable Seasonal Business For Sale

- **Weekly and Daily rentals**
- **Prime Clientele:** Wapato Point Vacationers
- **Growth Potential:** Expand into venues, wineries, weddings, and events
- **Opportunity:** Own a thriving business in your hometown



**Contact Owner:**  
**Gary Harlow at**  
**Zero Handicap Golf Cars**

- **18 Rental Cars**

15 Four-Passenger  
3 Six-Passenger

**Price: \$54,000**

*Don't miss this chance to step into a lucrative and rewarding business!*




**Earning a Minimum of \$50K Every Summer Just at Wapato Point!**





# CLASSIFIEDS

Leavenworth Echo  
Cashmere Valley Record  
Lake Chelan Mirror  
Quad City Herald

Email your Classifieds & Legal Notices to: [classifieds@ward.media](mailto:classifieds@ward.media) or call 509-293-6780

**PUBLISHER'S NOTICE**  
All real estate advertising in this newspaper is subject to the Fair Housing Act, which makes it illegal to advertise "any preference, limitation or discrimination based on race, color, religion, sex, handicap, familial status or national origin, or an intention to make any such preference, limitation or discrimination." This newspaper will not knowingly accept any advertising for real estate that is in violation of the law. To complain of discrimination call HUD at 1-800-669-9777. The number for hearing impaired is 1-800-927-9275.

**CORRECTIONS:** Ward Media LLC shall be responsible for corrections to advertisements on the first publication only. The advertiser will be responsible for the corrections made thereafter. Ward Media LLC shall not be responsible for other errors or omissions in connection with an advertisement is strictly limited to the publication of the advertisements in any subsequent issue. No monetary refunds will be given. For more information call 509-548-5286.



**Announcements**  
General Interest

**ADVERTISE STATEWIDE** with a \$325 classified listing or \$1600 for a display ad. Call this newspaper or 360-344-2938 for details.

**Donate your car, truck, boat, RV and more to support our veterans!** Schedule a FAST, FREE vehicle pickup and receive a top tax deduction! Call Veteran Car Donations at 1-877-225-8568 today!

**Prepare for power outages with Briggs & Stratton; PowerProtect(TM)** standby generators - the most powerful home standby generators available. Industry-leading comprehensive warranty - 7 years (\$849 value.) Proudly made in the U.S.A. Call Briggs & Stratton 1-888-358-4047.

**ELIMINATE GUTTER CLEANING FOREVER!** LeafFilter, the most advanced debris-blocking gutter protection. Schedule a FREE LeafFilter estimate today. 20% off Entire Purchase. 10% Senior & amp; Military Discounts. Call 1-888-360-1582.

**Conflict Resolution**  
509 521 6441  
NCW  
Mediation  
Chelan & Manson

**Employment**  
Help Wanted



The City of Leavenworth is hiring for:

- Public Works Director
- Community Development Director
- Utility Maintenance Worker

Details at [cityofleavenworth.com/employment/](http://cityofleavenworth.com/employment/). EOE



Douglas PUD has an opening for:  
Hatchery Specialist

Details at [www.douglasrud.org](http://www.douglasrud.org) <[p://www.douglasrud.org](http://p://www.douglasrud.org)



School District is seeking qualified applicants for the following position:

- Alpine Lakes Intervention Para Educator

Fast Track application process and information can be found on our website at [www.cascadesed.org](http://www.cascadesed.org) EOE

**PUD No. 1 of Okanogan County is seeking to fill an accountant / payroll position.** Please see [www.okanoganrud.org](http://www.okanoganrud.org) for job description, requirements and submit application with resume. Okanogan PUD is an equal opportunity provider and employer.

**For Sale**  
Sporting Goods

**For Rent:** 40 ft. deep water boat slip with electric, water, waste dump. Sunset Marina, Chelan. Secure parking. Oct. 1, 2024 to April 1, 2025. \$400 a Month **808-298-1031.**

**Real Estate**  
Boat Slip For Sale

**Priced Reduce to \$136,500**

Sunset Marina, Chelan, 40 ft. deep water slip with electric and water to slip. Waste dump. Clubhouse with showers, lounge with TV, bar, and kitchen for members use. Lanai seating with fire pit and barbecue. Slip B10 is best location. Secure parking.  
**808-298-1031**  
Seller is licensed Realtor Maui, HI

**Legals**  
Public Notices

**SUPERIOR COURT OF WASHINGTON FOR KING COUNTY**  
In re the Estate of: **WILLIAM ROY SARGENT, Deceased.**  
NO. 24-4-04771-6 SEA  
PROBATE NOTICE TO CREDITORS  
RCW 11.40.030

The person named below has been appointed and has qualified as the Administrator of this estate. Any person having a claim against the above-named decedent must, before the time the claim would be barred by any otherwise applicable statute of limitations, present the claim in the manner as provided in RCW 11.40.070 by (1) serving on or mailing to the Administrator or the attorneys for the Administrator at the address stated below a copy of the claim, and (2) filing the original claim with the court in which the probate proceedings were commenced. The claim must be presented within the later of (1) thirty days after the Administrator served or mailed the notice to the creditor as provided under RCW 11.40.020(1)(c); or (2) four months after the date of first publication of this notice. If the claim is not presented within this timeframe, the claim is forever barred, except as otherwise provided in RCW 11.40.051 and RCW 11.40.060. This bar is effective as to claims against both the decedent's probate and nonprobate assets. Dated: 6/28/2024 //s Brea Sargent Brea Sargent, Administrator Attorneys for Administrator and Address for Mailing or Service: Matthew S. Wiese, WSBA #47322 Andrew N. Stokes, WSBA #54401 Carney Badley Spellman, PS 701 Fifth Avenue, Suite 3600 Seattle, Washington 98104-7010 Telephone: (206) 622-8020 Facsimile: (206) 467-8215 Date of first publication of this notice: 7/17/24 Court of Probate Proceedings: King County Superior Court 516 Third Avenue South Seattle, WA 98104 Probate Cause No.: 24-4-04771-6 SESA Published in the Lake Chelan Mirror July 17, 24, and 31, 2024. #8157



**NCW News Network**  
Leavenworth Echo  
Cashmere Valley Record  
Lake Chelan Mirror  
Quad City Herald

**Public Notices**  
**SUPERIOR COURT OF WASHINGTON FOR ADAMS COUNTY**  
In the Matter of the Estate of **PEGGY W. WHITMORE, Deceased.**  
No. 24-4-00018-01  
PROBATE NOTICE TO CREDITORS  
RCW 11.40.030

The Personal Representative named below has been appointed as personal representative of this estate. Any person having a claim against the decedent that arose before the decedent's death must, before the time the claim would be barred by any otherwise applicable statute of limitations, present the claim in the manner as provided in RCW 11.40.070 by serving on or mailing to the personal representative or the personal representative's attorneys at the address stated below a copy of the claim and filing the original of the claim with the Clerk of this Court. The claim must be presented within the later of: (1) Thirty days after the personal representative served or mailed the notice to the creditor as provided under RCW 11.40.020(1)(c); or (2) four months after the date of first publication of the notice. If the claim is not presented within this time frame, the claim is forever barred, except as otherwise provided in RCW 11.40.051 and 11.40.060. This bar is effective as to claims against both the decedent's probate and nonprobate assets. Date of First Publication: July 31, 2024 Personal Representative: GREG L. WHITMORE Attorney for P.R.: John M. Kragt Address for Mailing or Service: MCGUIRE, DeWULF, KRAGT & JOHNSON, P.S. 108 N. Adams St. Ritzville, WA 99169 Greg L. Whitmore Personal Representative Published in the Lake Chelan Mirror on July 31, August 7, 14, 2024. #8192

**Public Notices**  
**SUPERIOR COURT OF WASHINGTON IN AND FOR KING COUNTY**  
IN THE MATTER OF THE ESTATE OF **DAVID A. BISSONNETTE, Deceased.**  
Probate No. 24-4-04499-7 SEA  
AMENDED  
PROBATE NOTICE TO CREDITORS  
(RCW 11.40.030)

THE PERSONAL REPRESENTATIVE NAMED BELOW has been appointed as personal representative of this estate. Any person having a claim against the Decedent must, before the time the claim would be barred by any otherwise applicable statute of limitations, present the claim in the manner as provided in RCW 11.40.070 by serving on or mailing to the personal representative or the personal representative's attorney at the address stated below a copy of the claim and filing the original of the claim with the court in which the probate proceedings were commenced. The claim must be presented within the later of: (1) Thirty days after the personal representative served or mailed the notice to the creditor as provided under RCW 11.40.020(1)(c); or (2) four months after the date of first publication of the notice. If the claim is not presented within this time frame, the claim is forever barred, except as otherwise provided in RCW 11.40.051 and 11.40.060. This bar is effective as to claims against both the Decedent's probate and nonprobate assets. Date of first publication: July 17, 2024 Personal Representative: Pamela Ann Bissonnette Attorney for Personal Representative: John S. McMasters, WSBA #17026, Mullavey, Prout, Grenley & Foe, LLP, 2401 NW 65th St., Seattle, WA 98117 Published in the Lake Chelan Mirror July 17, 24, and 31, 2024. #8155

**Public Notices**  
**IN THE SUPERIOR COURT OF WASHINGTON COUNTY OF CHELAN**  
Estate of **TROY E. SULLIVAN, Deceased.**  
NO. 24-4-00262-04  
PROBATE NOTICE TO CREDITORS  
RCW 11.40.030

The personal representative named below has been appointed as personal representative of this estate. Any person having a claim against the decedent must, before the time the claim would be barred by any otherwise applicable statute of limitations, present the claim in the manner as provided in RCW 11.40.070 by serving on or mailing to the personal representative or the personal representative's attorney at the address stated below a copy of the claim and filing the original of the claim with the court. The claim must be presented within the later of: (1) Thirty days after the personal representative served or mailed the notice to the creditor as provided under RCW 11.40.020(3); or (2) four months after the date of first publication of the notice. If the claim is not presented within this time frame, the claim is forever barred, except as otherwise provided in RCW 11.40.051 and 11.40.060. This bar is effective as to claims against both the decedent's probate and nonprobate assets. DATE OF FIRST PUBLICATION: July 31, 2024 PERSONAL REPRESENTATIVE: Connie L. Presley ATTORNEY FOR PERSONAL REPRESENTATIVE: Jeffrey T. Fehr ADDRESS FOR MAILING OR SERVICE: Fehr Law Office, PLLC P.O. Box 1606 Chelan, WA 98816 509-682-4536 Court of probate proceedings and cause no.: Superior Court of Washington in and for Chelan County, Cause No. 24-4-00262-04 Published in the Lake Chelan Mirror on July 31, August 7, 14, 2024. #8210

**Public Notices**  
**CHELAN COUNTY PUBLIC HOSPITAL DISTRICT #2 dba LAKE CHELAN HEALTH**  
REQUEST FOR PROPOSALS – **GENERAL CONTRACTOR / CONSTRUCTION MANAGER (GC/CM) SERVICES - EMS AND ADMINISTRATION BUILDING PROJECT**  
Project Location: Chelan, WA  
Estimated construction cost: \$8.2 million  
Owner: Chelan County Public Hospital District #2 dba Lake Chelan Health  
Owner Contact: Dean Gable, Hill International  
Date of Publication: July 31, 2024  
Preproposal Meeting and Site Walk: August 7, 2024 (details in RFP)  
Proposal due to: Owner Contact  
Scope: Preconstruction and Construction services for new EMS and Administration Building, EMS operations and support services (approx. 6,000 SF), EMS garage (approx. 5,000 SF), and hospital administration space (approx. 11,000 SF). The EMS functions will include pull through ambulance bays, staff sleep rooms, documentation/command center, office spaces, team conference space, supply storage, crew kitchen, crew day room.  
The administrative portion of the building will house executive leadership, human resources, business offices, quality, and supporting functions. It will include a mix of walled and open office space, as well as small and medium conferences rooms and a training room to support large group meetings, and clinical training. The project will also, evaluate the option on the site for covered parking for larger vehicles, buses, equipment, and trailers, budget permitting.  
Contact [deangable@hillintl.com](mailto:deangable@hillintl.com) to request a copy of the RFP. Published in the Lake Chelan Mirror on July 31, August 7, 2024. #8222

**Public Notices**  
**SUPERIOR COURT OF WASHINGTON FOR CHELAN COUNTY**  
In Re the Estate of: **FRANCES M. McCLOSKEY, Deceased.**  
NONPROBATE NOTICE TO CREDITORS  
Cause No. 24-4-00269-04

The notice agent named below has elected to give notice to creditors of the above-named decedent. As of the date of the filing of a copy of this notice with the court, the notice agent has no knowledge of any other person acting as notice agent or of the appointment of a personal representative of the decedent's estate in the state of Washington. According to the records of the court as are available on the date of the filing of this notice with the court, a cause number regarding the decedent has not been issued to any other notice agent and a personal representative of the decedent's estate has not been appointed. Any person having a claim against the decedent must, before the time the claim would be barred by any otherwise applicable statute of limitations, present the claim in the manner as provided in RCW 11.42.070 by serving on or mailing to the notice agent or the notice agent's attorney at the address stated below a copy of the claim and filing the original of the claim with the court in which the notice agent's declaration and oath were filed. The claim must be presented within the later of: (1) Thirty days after the notice agent served or mailed the notice to the creditor as provided under RCW 11.42.020(2)(c); or (2) four months after the date of first publication of the notice. If the claim is not presented within this time frame, the claim is forever barred, except as otherwise provided in RCW 11.42.050 and 11.42.060. This bar is effective as to claims against both the decedent's probate and nonprobate assets. Date of First Publication: July 24, 2024 Stan Morse, Esq. P.O. Box 2128 Chelan, WA 98816 (509)682-7239 [stan@stanmorse.com](mailto:stan@stanmorse.com) The notice agent declares under penalty of perjury under the laws of the state of Washington on July 3, 2024, at Seattle, Washington that the foregoing is true and correct. Douglas J. McClosky, Notice Agent /s/ Attorney for the Notice Agent: Stan Morse WSBA 9627 Address for Mailing or Service: Doug McClosky, Trustee 2362 N 57th St Seattle WA 98103 Court of Notice Agent's oath and declaration and cause number: Chelan County Superior Court Cause No. 24-4-00269-04 Published in the Lake Chelan Mirror on July 24, 31, August 7, 2024. #8170

**NCW NEWS**

Discover the heart of North Central Washington with NCW News – your premier source for

- Local Stories
- Insights &
- Community Updates.

Stay Informed Stay Connected [ncw.news/](http://ncw.news/)

**WORD SCRAMBLE**

Rearrange the letters to spell something pertaining to a fair.

**RRSIEF**

--	--	--	--	--

Answer: Ferris

*Guess Who?*

I am a country singer born in Georgia on July 31, 1978. I started performing pop rock covers at local clubs as a teen before finding my country sound. I won a Grammy Award in 2013 for my album, which includes a tune called "Island Song" that has a reggae feel.

Answer: Zac Brown

# Kid Scoop

THE AWARD-WINNING PRINT & ONLINE FAMILY FEATURE

Puzzle answers, recipes, videos and more at [www.kidscoop.com](http://www.kidscoop.com)

© 2024 by Vicki Whiting, Editor Jeff Schinkel, Graphics Vol. 40, No. 35

## Kid Scoop Together: Olympic Quiz

Read these questions to a family member. How many did they get right?

# The Summer Olympic Games Are Back!

This summer, the world turns its eyes to Paris, France. Why? That's where the Summer Olympics will be held starting on Friday, July 26 through Sunday, August 11, 2024.



### Who's there?

Take a look at the logo for the Paris Summer Olympic Games. At first, you'll see the Olympic flame and the Olympic rings. But take a closer look.

Do you see a face and hair? This is the face of a goddess that is seen as the symbol for liberty and wisdom in France.

Use this code to reveal her name.

■ = A   ■ = I   ★ = N  
 ■ = E   ■ = M   ✕ = R



### 1. What do the five rings of the Olympics mean?

- Five Cities
- Five Countries
- Five Continents

### 2. What does the Olympic Motto "Citius, Altius, Fortius" mean?

- Smarter, Stronger, Faster
- Swifter, Higher, Stronger
- Better, Bigger, Bolder

### 3. According to the Olympic Creed, the most important thing in the Olympic Games is not to win but ...

- to play fair.
- to win big.
- to take part.

### 4. Where is the Olympic torch first lit?

- Athens
- Greece
- Olympia

### 5. Women were first allowed to compete in the Olympics in what year?

- 1800
- 1900
- 2000

### 6. The 2026 Winter Olympic Games will be held in:

- Italy
- Germany
- Norway

### 7. Which of the following is NOT a color of one of the Olympic rings?

- Blue
- Purple
- Black

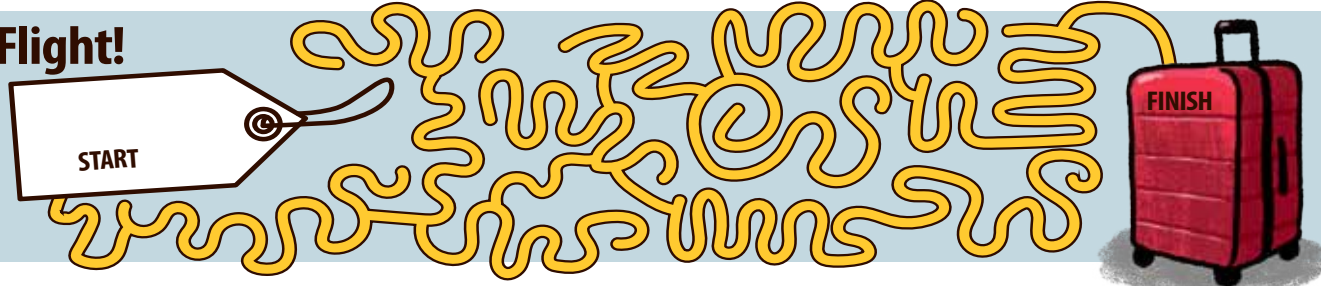
### 8. All the participating countries sent female athletes for the first time in which Olympics?

- 1976 Montreal
- 1984 Los Angeles
- 2012 London

- 1. Five continents
- 2. Swifter, Higher, Stronger
- 3. To take part
- 4. Olympia
- 5. 1900
- 6. Italy
- 7. Purple
- 8. 2012 London

### Don't Miss Your Flight!

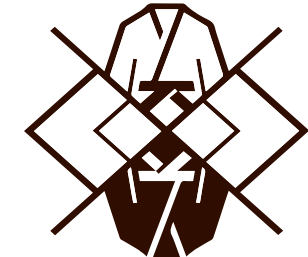
Imagine you're flying to Paris, but you forgot to attach your nametag to your suitcase. Write your name on the tag, then follow the maze to find your suitcase.



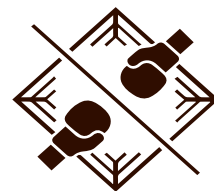
## Pictograms

It is said that a picture is worth a thousand words. At the Olympic Games, a picture is worth a thousand words in hundreds of languages.

Pictograms are simplified pictures or symbols. There is one for each sport to help people from all over the world understand what is happening. For example, this pictogram represents the Olympic sport of judo.



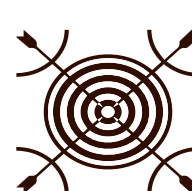
Do the math to match each pictogram to the name of the Summer Olympic event that it represents.



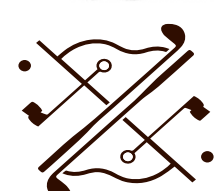
18 - 3 = **BOXING**



11 + 11 + 11 =



24 + 6 =



41 - 9 =



14 + 14 =



3 + 6 + 2 =



9 + 9 + 9 =



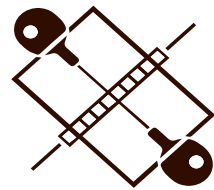
5 + 2 =



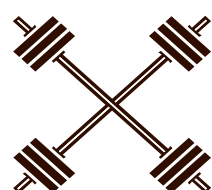
8 + 9 + 1 =



3 + 3 + 6 =



17 - 4 =



22 - 12 =

- 12 = Rowing
- 11 = Football (Soccer)
- 13 = Table Tennis
- 18 = Breaking
- 7 = Artistic Swimming
- 33 = Badminton
- 28 = Marathon Swimming
- 30 = Archery
- 27 = Basketball
- 10 = Weightlifting
- 32 = Golf
- 15 = Boxing

Explore more at [olympics.com](http://olympics.com)

### Extra! Extra!

### The Great Symbol Search

Look for five symbols in today's newspaper. Show them to a friend to see if they can tell what the symbol represents.

Standards Link: Connect artistic representations to meaning.

## Kid Scoop Puzzler

### The 2024 Paralympic Games

This is the logo of the 2024 Paralympic Games.

Athletes with physical disabilities from around the world compete in the Paralympic Games every four years alongside the Olympics. In fact, Paralympics means "alongside the Olympics."

The Paralympics began 64 years ago. What year was that?

  1     9  

Standards Link: Math: Calculate sums and differences to 100.



## ATHLETIC WORD SEARCH

- GYMNASTICS
- WATER POLO
- BASEBALL
- SWIMMING
- SURFING
- SAILING
- KARATE
- TENNIS
- SOCCER
- TRACK
- CANOE
- GOLF
- JUDO

Find the words in the puzzle by looking up, down, backwards, forwards, sideways and diagonally.



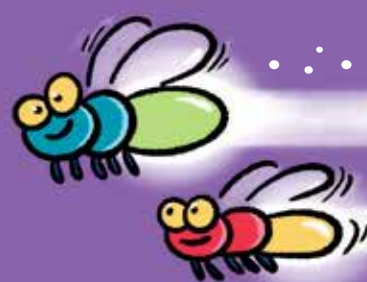
Standards Link: Letter sequencing. Recognize identical words. Skim and scan reading. Recall spelling patterns.

## FROM THE LESSON LIBRARY

### Sports Team Mascots

Sports team mascots (often an animal or object) give personality to their teams. Look through today's sports section. Select one team and make a list of characteristics you think that team wants to convey. Create a new mascot for that team.

Standards Link: Display meaning through a variety of artistic representations.



## How do fireflies begin a race?

ANSWER: "On your mark, Get set, GLOW!"

## Write On! Sports Story

Write a sports story about something that happened in a game you played or watched.

MEDIA PARTNER

## EXPLORE THE WORLD WITH YOUR LOCAL LIBRARY.

AT YOUR LIBRARY

- Storytimes
- After school events & activities
- Check out books, comics, movies, & more

NCWLIBRARIES.ORG

- Free homework help
- Britannica Library
- Stream books, comics, movies, & more