

# The Leavenworth Echo

\$1.00

Volume 124 • No. 27

Upper Valley News Since 1904  
A Ward Media Publication

 leavenworthecho.com

## 5 things to do this week

Five of the most captivating events of the week | A2



# Restoration project aims to reverse decades of ecological damage in Lower Peshastin Creek

By **Taylor Caldwell**  
Ward Media Staff Reporter

**PESHASTIN** – After decades of degradation and reshaping, Lower Peshastin Creek will be returning to near its historical shape, providing better habitat for Spring chinook, steelhead, and bull trout.

The project to restore Lower Peshastin Creek, led by Cascade Fisheries, will clean up toxic lead waste, rebuild fish habitat, and preserve a critical cold water refuge where Peshastin Creek meets the Wenatchee River, known as a confluence. The project is located at the Dryden Dam public access site, on Washington Department of Fish and Wildlife (WDFW) land.

Peshastin Creek is not only an important spawning and rearing site for natal fish, but it also provides cold water refuge for both natal and non-natal fish, or those coming from other locations along the Wenatchee River. According to the Washington Department of Ecology, Peshastin Creek is approximately two degrees Celsius cooler than the Wenatchee River.

“Peshastin [Creek] is one of the only cold water refuges in the lower Wenatchee basin, and in drought

years, that can be really important for fish to have refuge to survive when the main stem of the river can be excessively warm and inhospitable for fish. So, that’s one unique feature about Peshastin here, that this project will help improve those conditions going forward,” said Amanda Barg, Assistant Regional Habitat Program Manager of WDFW.

However, over the last century, Peshastin Creek has changed immensely, primarily due to the construction of Highway 97 through Blewett Pass. According to the Old Blewett Blog, travel began in the 1870s as a way to access gold mining. The original highway was built in the 1920s and later rerouted for a more streamlined path in 1956. The blog states that the new route reduced the number of curves from the original’s 248 down to 37. The straightening of this highway also straightened Peshastin Creek. According to a 1999 U.S. Forest Service report, this transformation shortened it by almost a mile, and Peshastin lost 34 percent of its floodplain.

“And when you straighten a river, you’re increasing the slope, which increases the velocity, which

See **PESHASTIN CREEK** Page B3



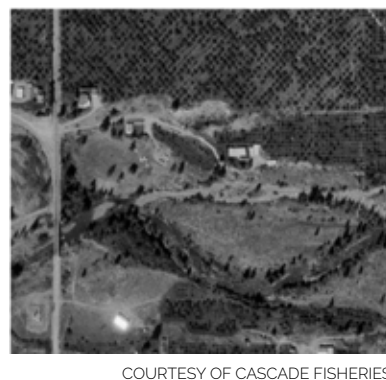
COURTESY OF CASCADE FISHERIES

The restoration project will restore Peshastin Creek similar to its historical shape.



COURTESY OF CASCADE FISHERIES

An aerial shot of Peshastin Creek in August 1955, that shows it nearly dried up.



COURTESY OF CASCADE FISHERIES

An aerial shot of the creek in August 1972, showing the original flow path, prior to the creek’s transformation in 1975.

# Roots of abundance: A journey through Leavenworth's Pear Industry

This is the first article in a series about the Pear industry in Leavenworth. With thanks to the Leavenworth Public Library and the Greater Leavenworth Museum, this installment provides a brief origin story and general history of the orchard business in Leavenworth. The following installments will detail the industry’s growth in the intervening decades, two major waves of migration for work in the orchards, its current status, and future.

By **Caroline Menna**  
Ward Media Intern

**LEAVENWORTH** – In the Odyssey, Homer describes the pear that Odysseus admires in the garden of Alcinous, King of the Phaeacians, as one of the ‘gifts of the gods.’ This noble tradition of pear cultivation began in Leavenworth in the late 19th century and continues to this day.

Leavenworth has a rich history tied to the tree fruit industry. The area’s nutrient-rich volcanic soil, favorable climate - with ample sunshine followed by cool nights in the spring, summer, and fall - and abundant water supply from Icicle Creek and the Wenatchee River make it an ideal location for fruit cultivation.

In the late 1800s and early 1900s, settlers in the area, first known as Icicle Flats, began planting apples along Icicle Creek amidst the logging industry, recognizing the potential for fruit production. Leavenworth’s first commercial orchard was planted in 1906 by John B. Adams. Other orchardists followed suit, including John Emig, who planted Bartlett and Flemish Beauty pears alongside his apples in his orchards on the upper reaches of the land between present-day Pine Street and Ski Hill.

In the first decades of the 20th century, pears were commonly planted alongside apples. Pears soon outpaced their industry cousins, though, to become a significant part of the local industry and marking the

See **PEARS** Page B3



CAROLINE MENNA/ WARD MEDIA

A postcard with the image of a fruit crate label used by the Leavenworth Fruit Company. The former company’s downtown warehouse stored fruit until the 1990s and stood in Leavenworth until 2012.

# Work begins on Osborn Playground replacement project

By **Taylor Caldwell**  
Ward Media Staff Reporter

**LEAVENWORTH**—The playground at the former Osborn Elementary School site is officially gone, and new equipment is on the way. Under the Osborn Playground Replacement Project, the site will receive a new, inclusive playground, with an anticipated opening date by late summer.

“It’s going to look really different, really quickly, over the next few weeks,” said Communications and

Special Projects Manager Kara Raftery.

After demolition, the next steps will be pouring concrete and installing equipment. The project is expected to take approximately six to eight weeks.

“Overall, [construction] should be minimally disruptive, because the site is so contained to the actual playground site,” said Raftery.

The playground will include a swing set and two play structures, one designed for children ages two to five and the other for children

between the ages of five and twelve. Other equipment includes an inclusive whirl, sensory dome, and vista arc sphere, which were chosen by the community through a survey. The playground will sit on poured-in-place rubber surfacing, which is designed to be more conducive to mobility devices. For adults, the design includes a set of exercise equipment, as well as a walking track that circles the playground.

“The playground was in dire need of a facelift, and hopefully, we exceed the community’s expectations with

the new playground,” said Raftery.

According to the city’s website, the City of Leavenworth purchased the Osborn Elementary property in 2020 after the Cascade School District Board voted to surplus the property in 2019. In July 2023, the city council directed a neighborhood playground committee to form. The committee received approval from the Council at the end of March to purchase new playground equipment.

Taylor Caldwell: 509-433-7276 or [taylor@ward.media](mailto:taylor@ward.media)



COURTESY OF CITY OF LEAVENWORTH

The former playground at the Osborn Elementary site will be replaced, with the new playground anticipated to be complete in six to eight weeks.



COURTESY OF CITY OF LEAVENWORTH

Demolition of the former playground began June 21.

# City Council considers extended notice for rent increases to protect tenants

By **Taylor Caldwell**  
Ward Media Staff Reporter

**LEAVENWORTH** – Tenants renting within city limits may see more local protections from rent hikes as early as this summer. During its June 25 Study Session, City Council opened the discussion to limit rent increases unless tenants are given extended notice, and directed city staff to draft an ordinance for review.

“I think with our low inventory, and as far as homes to buy and even rentals, this is just one more

protection,” said City Councilmember Travis McMaster, who requested the discussion.

During the session, City Council reviewed a similar ordinance adopted by the City of White Salmon, WA, in Sept. 2023, which does not allow a landlord to increase the rent of a tenant by more than ten percent, unless the tenant is given at least 180 days’ notice before the increase takes place.

According to Columbia Gorge News reporting, the White Salmon ordinance received a unanimous vote of approval from its city council, as well as support

from community organizations such as Comunidades, a Latino-led environmental and social justice organization in the Gorge. However, landlords believed there were already enough tenant protections within state law.

According to RCW 59.18.140, under The Residential Landlord-Tenant Act, a landlord must provide a minimum of 60 days’ prior written notice of an increase in rent, and the increase may not become effective until the completion of the rental agreement term. Currently, the

City of Leavenworth does not have specific tenant protections written into municipal code.

By adopting an ordinance that would require 180 days’ notice, it would give tenants more time to seek out other housing options, and prepare for moving expenses if necessary, which is intended to help low-income households.

“I think it’s a real valid point. Tenants need protection. I don’t think you’re denying the landlord’s ability to function or to be entrepreneurs,” said City Councilmember Zeke Reister.

City Councilmember Clint Strand expressed urgency for adoption if the city were to pursue such an ordinance, fearing that landlords may try to implement rent hikes before its adoption. City Administrator Matthew Selby said he would start drafting an ordinance to review for the next study session. A public hearing date will likely be set after review.

“This could be done in July,” said Selby.

Taylor Caldwell: 509-433-7276 or [taylor@ward.media](mailto:taylor@ward.media)

## Inside The Echo this Week

5 Things to do this Week.....	A2	Community Calendar.....	A3	Sheriff Report.....	A3
Business Directory.....	A3	Classifieds.....	B2-B3	Advertising Flyers:	
Church Guide.....	B1	Kids Scoop.....	B4	Safeway, Dan’s Food Market	

\$1.00



8 08805 93175 4



Phone:  
509-548-5286

[www.leavenworthecho.com](http://www.leavenworthecho.com)

# The Leavenworth Echo

© Ward Media, LLC 2024



### On the Internet

Website: [www.leavenworthecho.com](http://www.leavenworthecho.com)  
E-mail: [news@ward.media](mailto:news@ward.media)

**Office hours**  
Hours: 9 a.m. - 5 p.m. except weekends, or call 509-548-5286

### Contact information

**CEO & Publisher**  
**Terry Ward**  
509-731-3284  
[terry@ward.media](mailto:terry@ward.media)

**COO & Co-Owner**  
**Amy M. Yaley**  
509-731-3321  
[amy@ward.media](mailto:amy@ward.media)

### Multimedia Sales Manager

**Sherrie Harlow**  
253-255-5920  
[sherrie@ward.media](mailto:sherrie@ward.media)

**Reporter**  
**Taylor Caldwell**  
[taylor@ward.media](mailto:taylor@ward.media)

**Reporter**  
**Quinn Propst**  
[quinn@ward.media](mailto:quinn@ward.media)

**Circulation**  
509-293-6780  
[circulation@leavenworthecho.com](mailto:circulation@leavenworthecho.com)

### Deadlines

Calendar Listings Noon, Friday  
News Submissions Noon, Friday  
Letters to the Editor Noon, Friday  
Display Advertising: 5:00 p.m., Thur.  
Legal Notices: Noon Friday  
Classified Ads: Noon Friday

### Subscriptions

In Chelan County (yearly) **\$40**  
**\$5.00** to include online subscription  
In State-Out of County (yearly) **\$50**  
Online E-edition **\$40**

The Leavenworth Echo does not refund subscription payments except to the extent that it might fail to meet its obligation to publish each week, in which case the cost of the issues missed would be refunded as an extension.  
Subscriptions may be transferred to another individual or organization.



© Ward Media, LLC prints on recycled newsprint with soy ink. Please recycle.

### Letters policy

The Leavenworth Echo welcomes letters to the editor. All letters must be accompanied by the author's name, a home address and a daytime phone number (for verification purposes only). Letters may be edited for length, clarity, accuracy and fairness. No letter will be published without the author's name. Thank you letters will only be printed from non-profit organizations and events. We will not publish lists of businesses, or lists of individual names. Email your letters to [letters@ward.media](mailto:letters@ward.media).

### Corrections

The Leavenworth Echo regrets any errors. If you see an error, please call **509-548-5286**. We will publish a correction on this page in the next issue.

### News tips

Have an idea for a story? Call the Echo at **509-548-5286** email [news@ward.media](mailto:news@ward.media)

### Classified Advertising

Classified ads can be placed during normal office hours by calling **509-293-6780** or by emailing [classifieds@leavenworthecho.com](mailto:classifieds@leavenworthecho.com).

### Legal Advertising

Legal ads can be placed during normal business hours by calling **509-293-6780** or by emailing [legals@ward.media](mailto:legals@ward.media)

### Obituaries

Obituaries can be placed during normal business hours by calling **509-548-5286** or by emailing [obits@ward.media](mailto:obits@ward.media)

### Services

Back Issues are available up to one year after publication for a small fee. Archive Research \$25 per hour

The Leavenworth Echo (USPS 308 160) is published every Wednesday by Ward Media, LLC, 29 S. Wenatchee Ave., Suite A, Wenatchee, WA 98801 Telephone: 509-548-5286. Periodical postage paid at Leavenworth, Wash. (and additional mailing offices). Postmaster: Send address corrections to: Leavenworth Echo, 131 S. Apple Blossom Drive #109, Chelan, WA 98816

### Classified Weekly Rates

**\$15.00** for first 30 words. **10** for each additional word over 30 words Borders, bold words, headlines, logos and photos subject to additional charges.

## Get your event in the spotlight with Ward Media!

If you have an exciting event to share, email Reporter Quinn Propst at [quinn@ward.media](mailto:quinn@ward.media). We'll showcase the five most captivating events of the week, giving your event the recognition it deserves. Even if your event isn't among the top five, it will still be added to our events calendar and featured online. Don't miss this chance to make your event shine!



### The Sound of Music

Leavenworth Summer Theater will present "The Sound of Music" on Friday, July 5 at 8 p.m.

"The beloved musical story of Maria and the von Trapp Family never fails to enchant audiences at our unforgettable Ski Hill Amphitheater," the event page states. "All your favorite songs and characters make this a perfect event for the whole family."

"An iconic Leavenworth experience, join us for a magical night where the stars come out and the hills truly are alive with Rodgers and Hammerstein's "The Sound of Music," the event page states.

For more information visit [leavenworthsummertheater.org](http://leavenworthsummertheater.org).

### Jr Firefighter Program

Lake Wenatchee Fire and Rescue will offer a Jr Firefighter Program on Saturday, July 6 from 10-11 a.m. at the Lake Wenatchee South Park Amphitheater.

"Join local firefighters in an interactive game of show and tell," the event page states. "Try on their gear, hop on the engine, and learn how they fight fires."

For more information visit [parks.wa.gov](http://parks.wa.gov).

### Local Heroes Storytime

The Leavenworth Library will host Local Heroes Storytime at the Leavenworth Farmers Market on Saturday, July 6 from 11-11:30 a.m.

"Meet you at the Farmer's Market! Come join us and our

special "local hero" guests as they share some of their favorite children's books at story time," the event page states. "Bring your own blanket or just find a patch of grass in the shade. You're sure to run into some friends."

For more information visit [ncwlibraries.org](http://ncwlibraries.org).

### Teen and tween craft party

The Leavenworth Library will host a Teen and Tween Craft Party on Thursday, July 11 from 3-5 p.m. at the Lions Club Park.

"Join the Leavenworth and Peshastin Libraries at Lions

# 5 THINGS TO DO THIS WEEK

Club Park for an afternoon of crafts and sweet treats," the event page states. "Make a duct tape wallet, design your own button, try macrame, and more. Treats provided by the Friends of the Leavenworth Library."

For more information visit [ncwlibraries.org](http://ncwlibraries.org).

### Ice cream social

The Leavenworth Methodist Church will host a free ice cream social on Thursday, July 4 from 1-3 p.m. on the church lawn.

"Come celebrate the 4th of July with friends and family," the event page states. "Ice Cream, syrup, whipped cream and sprinkles...Yum!"

## LEAVENWORTH WINE CLASSIC

TO BENEFIT TIERRA LEARNING CENTER & THE PEOPLE WITH DISABILITIES WE SERVE

July 13, 5 - 9 p.m. | Gala Dinner & Auction | Tierra Learning Center

Purchase your tickets today | [www.tierralearningcenter.org](http://www.tierralearningcenter.org) | 435-655-5040



# Summer thunderstorm sparks quickly suppressed fire on Tumwater Mountain

By CAROLINE MENNA  
Ward Media Intern

LEAVENWORTH - Despite the unusually cool start to summer in the Upper Wenatchee Valley this year, the thunderstorms that rolled through the area last Wednesday morning, June

26, followed by the distinctive hum of a circling helicopter, presented a stark reminder that fire season is in full swing.

An early morning lightning strike ignited a small blaze on Tumwater Mountain, prompting an immediate response from local fire crews and aerial firefighting teams.

During the storms, Matthew Kennedy, Assistant Fire Management Officer of the Wenatchee River Ranger District, was monitoring a lightning strike map and then visually inspecting the strike areas when he saw smoke rising from Tumwater Mountain, which flanks the entry of Tumwater Canyon on the west end of Leavenworth.

When it was determined that cliff bands and rough terrain would impede ground crews from reaching the fire a few hundred feet below the summit, "we called dispatch and asked for aerial-delivered firefighters - rappellers in this case," reports Kennedy. "We got a pretty quick response from Wenatchee, and soon after, a crew of four and their equipment were helicoptered to the site and rappelled in."

The tenth-acre fire was quickly contained, and the crew spent the night on the mountain to ensure its suppression.

Despite the rapid response and containment efforts, the incident underscores the potential dangers posed by summer thunderstorms and human-caused fires in the region. The region has already seen, among other wildfires, a conflagration up No. 2 Canyon in Wenatchee and the ongoing Pioneer Fire burning 30 miles north of Chelan, which has already consumed almost 5,000 acres.

The Forest Service emphasizes the importance of

preparedness and vigilance during these dry months. A report by the Service several years ago placed Leavenworth at the top of cities in the Northwest exposed to "cumulative risk of wildfire."

The National Fire Protection Association provides a wildfire safety tips sheet on its safety information page: <https://www.nfpa.org/>

downloadable-resources/safety-tip-sheets/how-to-prepare-your-home-for-wildfires

Caroline Menna is an intern for Ward Media and a rising senior (Class of 2025) at Cascade High School. She will serve as Editor-in-Chief of the Cascade High School Publications Group for the 2024-2025 academic year.



CAROLINE MENNA / WARD MEDIA

Swedish company Flightradar24's flight tracking map of the Forest Service contracted helicopter, a Bell 205A-1 operated by Coastal Helicopters, that circled Tumwater Mountain on Wednesday, June 26, and inserted a crew of four and their equipment to knock down a lightning-ignited fire.

## Link Transit donates surplus vans to local nonprofits

NCW News  
Ward Media

WENATCHEE — Link Transit has awarded five local organizations with used vans as part of its new surplus van grant program.

The recipients of this inaugural round of grants include Wenatchee Rescue Mission, Plain Food Pantry and Community Church, CAFÉ, Chelan Teen Center, and Parque Padrinos/Pinnacles Prep.

The program allows Link Transit to repurpose vehicles that have reached the end of their service life with the transit agency, donating them to qualifying non-profit organizations and government agencies instead of auctioning

them off.

The awarded vehicles range from 5- to 11-passenger vans. While they no longer meet Link Transit's operational standards, all are fully operable and serviceable.

Link Transit received twelve applications for the five available vehicles in this round. The competitive grant process is designed to support organizations that align with Link Transit's goal of providing mobility options for community members.

The next application period for the surplus van grant program is scheduled for spring 2025. Interested organizations can find more information on Link Transit's website.

**Standing water in tarps, tires and buckets breeds mosquitoes!**

**Please Drain them!**

Do you live within two miles of Leavenworth? Call us if you see two or more mosquitoes

**The Leavenworth Mosquito Control District**  
(509) 548-5904 • [www.LeavenworthMosquitoControl.org](http://www.LeavenworthMosquitoControl.org)  
"Stopping mosquitoes at their source."

Find the best qualified local employee with the Ward Media Classifieds.

Call us at **509-548-5286**

## Correction

**Wildfire Home Protection Rebate maxes at \$600, not \$500**

In the article titled "Chelan County homeowners could receive technical and financial assistance to protect their home in a wildfire," published on June 5, an error was reported concerning the maximum rebate amount available through the Cascadia CD Home Hardening program. The article mistakenly stated the maximum rebate was \$500. The correct maximum rebate amount is \$600. We apologize for the oversight and are pleased to set the record straight.

**The Leavenworth Echo remains committed to accurate and responsible reporting.**

# zerorez®

Insanley Clean Carpets and Air Ducts™

Call or Book Online Today!  
**509-888-5885**  
[www.zerorez.com/cw](http://www.zerorez.com/cw)

Services: Carpets, Air Ducts, Commercial, Tile, Odors, Hardwoods

# Community Calendar

## Wednesday

**Children and Youth Program**, 6:30-8 p.m., 4th-12th grade, Leavenworth Church of the Nazarene, 509-548-5292.  
**Alpine Water District**, meets at the Lake Wenatchee Fire and Rescue, 1 p.m. Contact Anne Mueller, 425-238-3935.  
**Ukulele Circle**, 5:30- 6:30 p.m. every Wednesday at the Peshastin Library. Please come 15 minutes early to tune and get sheet music.  
**Cascade Medical Board**, 4th Wednesday of every month (with a couple exceptions), September 27, October 25, November 15, and December 20, 5:30 p.m.

## Thursday

**Leavenworth Lions Club**, For more info. President Steve Alford, 509-548-4505, or email leavenworthlionsclubwa@gmail.com  
**Peshastin Community Council meeting**, 7 p.m. Peshastin Memorial Hall. (2nd Thurs.)  
**Caregiver Support Group**, 2-3:30 p.m. For Caregivers of those with Memory Loss. The Henry Building, 120 Cottage Ave. Cashmere. Contact Carmen Gamble, 509-393-0789. (1st & 3rd Thurs.)

## Friday

**Veteran Service Office**, For information contact Tony Sandoval, 509-664-6801 or email: tony.sandoval@co.chelan.wa.us  
**Leavenworth Rotary Club**, In person at Kristall's Restaurant at Noon. Call President Mahala Murphy-Martin, 206-227-1576, for more information.  
**Senior Center**: Bingo 6 p.m. Call 509-548-6666. Facebook & website: leavenworthseniors@gmail.com

## Monday

**Upper Valley Free Clinic**, open every Monday to evaluate urgent health needs. Downstairs at Cascade Medical, 6:30 -8:00 p.m. Call UVMEND, 509-548-0408 for more information.  
**Leavenworth Mosquito District** board meeting 1st & 3rd Monday of each month at 7pm via ZOOM link posted at https://leavenworthmosquitocontrol.org/notices-updates/  
**Cascade School board meetings**, 7 p.m., Agenda can be found at https://www.cascadesd.org/Page/166. (2nd & 4th Mon.)  
**Chelan Douglas Republican Women**, Monthly meeting and luncheon 1st Monday of the month (unless it's a holiday). \$21. for lunch, \$8. for sitting only. 11 a.m. check in starts, noon for meeting and speaker. Wenatchee Convention Center 121 N. Wenatchee Ave. For information and reservations, please call, Angela Dye, President, 509-668-1105 (1st Mon.)

## Tuesday

**Peshastin Water District**, 5:30 p.m. For meeting location, contact Steve Keene, 509-548-5266. (2nd Tues.)  
**Icicle & Peshastin Irrigation Districts Meeting** Current meeting time is 8 a.m. at 5594 Wescott Drive. Call Levi Jantzer, cell 509-607-0278, 509-782-2561, or levi.ipid@nwi.net (2nd Tues.)  
**Cascade Education Foundation**, Contact: CEF@cascade.org  
**LWSC Alpine Committee**, 7 p.m., Ski Hill Lodge. Call 509-548-5477. (1st Tues.)  
**Leavenworth Masons**, 7:30 a.m., Zarthan Lodge No. 148, Leavenworth Senior Center upstairs. www.leavenworthmasons.org. (1st Tues.)  
**Cascade Garden Club**, 1 p.m., at a member's home or other venue. Call President Claudia, 509-662-7706. (3rd Tues.)  
**The Chelan County Cemetery District #2** (Peshastin) meets monthly at 6 p.m., at the Memorial Hall, located at 10204 Main Street. (2nd Tues.)  
**Senior Center, Exercise**, 11 a.m-Noon. Tues & Thurs. 509-548-6666. Facebook & Website: leavenworthseniors@gmail.com  
**Greater Leavenworth Museum board meeting** 5-7 p.m. Everyone is invited as a guest. Contact info@leavenworthmuseum.org for meeting information. (1st Tues.)

## NCW Libraries

Libraries will continue to offer a wide variety of resources and programs online at ncwlibraries.org and its Facebook page. Go to NCWLIBRARIES.ORG or 1-800-426-READ (7323) for more information, and updates.  
**Leavenworth Public Library**. Located at 700 Hwy. 2, Call 509-548-7923 or online leavenworth@ncwlibraries.org  
 Open on Tues., 10-5, Wed., 11-6, Thurs., 10-7, Fri., 10-5 Sat., 10-2. Closed Sun. and Mon.

## Other events

**The Greater Leavenworth Museum**, is open daily from 11-4, except Thanksgiving and Christmas. Check their Facebook page or website at leavenworthmuseum.org for updates and information.  
**Leavenworth Fish Hatchery**, 509-548-7641. Trails and grounds are open every day to the public. Please park outside the gate. All animals must be on a leash.  
**The Peshastin Public Library** is currently closed for renovations and will re-open in mid to late summer.  
**Note:** Some meetings or events may be rescheduled due to holidays or other closures. Please call and check with that organization listed.

Please note that if your organization changes dates, or hours please send us your updates to reporter@leavenworthecho.com or call 509-548-5286. Otherwise we are not responsible for any misinformation.

# Meeting Schedules For AA, Alanon, Celebrate Recovery

**AA Meetings:**  
 Call for the Zoom link to Leavenworth AA meetings: 541-480-8946  
 Call for the Zoom link to Leavenworth AAnon meetings: 509-548-7939  
 509-548-1627, 548-4522, 664-6469, 206-719-3379  
 Sunday 7 p.m., Leavenworth Senior Center, 423 Evans St.  
 Tuesday, 7 p.m., Light in the Valley, 8455 Main Street, Peshastin  
 Wednesday, 7 p.m., Leavenworth Senior Center, 423 Evans St.  
 Thursday, 1 p.m., Leavenworth Senior Center, 423 Evans St.  
 Friday, 7 p.m., St. James Episcopal Church, 222 Cottage Ave.  
**Alanon Meetings**, Call 509-548-7939  
**Renewed Celebrate Recovery**, Every Tuesday at 6:30 p.m. at Leavenworth Church of the Nazarene. 111 Ski Hill Drive. Come experience God's grace for all of life's hurts, habits and hang-ups. For more information: CelebrateRecoveryLCN@gmail.com or 509-596-1510.

Get rid of all that extra stuff with an ad in the Ward Media Classifieds.

**Call us at 509-548-5286**

# Tierra Learning Center to host Leavenworth Wine Classic

The Leavenworth Echo  
Ward Media

LEAVENWORTH — Tierra Learning Center announced plans to host the inaugural Leavenworth Wine Classic on July 13. The event aims to celebrate and support the center's mission of empowering individuals with developmental disabilities through housing, employment

services, and recreational programs.

The gala dinner and auction, set to begin at 5:00 p.m., will take place at the Tierra Learning Center in Sunitsch Canyon. Renowned local chef Lucas Szmania will prepare the culinary offerings, complemented by a selection of wines from eight prominent Washington wineries. Featured wineries include

Boudreaux Cellars, Dusted Valley, Icicle Ridge, WT Vintners, Eagle Creek, Tsillian Cellars, DavenLore Winery, and Watermill Winery. The event promises attendees an opportunity to socialize with culinary and wine enthusiasts in a unique setting.

Tierra Learning Center provides integrated community living and support services for people with

developmental disabilities. The organization focuses on three main areas: group home housing, employment services, and educational, vocational, and recreational activities.

*Tickets and additional information about the Leavenworth Wine Classic can be obtained through the Tierra Learning Center website at www.tierralearningcenter.org.*

# Hiker dies near Colchuck Lake

The Leavenworth Echo  
Ward Media

LEAVENWORTH — A 19-year-old hiker from Massachusetts died near Colchuck Lake last week, according to the Chelan County Sheriff's Office.

The incident began at approximately 3:39 p.m. on Saturday, June 22, when emergency services received a text-to-911 message reporting

an unconscious male who was not breathing. The coordinates provided by the message placed the emergency near Colchuck Lake, a popular hiking destination in the Alpine Lakes Wilderness.

Initially, the King County Sheriff's Office was dispatched with a helicopter, with an estimated arrival time of one hour. However, after receiving information that CPR had been unsuccessful for approximately

45 minutes, with no signs of life for about 15 minutes, the Chelan County Sheriff's Office took over the response.

The Chelan County Sheriff's Office helicopter transported personnel to the scene, where they confirmed the young hiker had died. The body was then airlifted to the Leavenworth Fish Hatchery and transferred to the custody of the Chelan County Coroner.

Authorities have not

released the identity of the deceased, pending notification of next of kin. The cause of death has not been disclosed, and it is unclear what led to the medical emergency.

Colchuck Lake, situated at an elevation of about 5,570 feet, is known for its challenging terrain and serves as a gateway to the Stuart Range and the Enchantments, a series of high alpine lakes popular among hikers and climbers.

# Chelan County Sheriff's Report

This report is compiled from records provided by the Chelan County Sheriff's Office and RiverCom. The publisher cannot certify the complete accuracy of the information provided.



## June 22

0:58:56 Welfare Check, 308 Commercial St  
 2:01:44 Domestic Distur, 10851 Chumstick Hwy  
 3:19:40 Noise, 17111 Camp 12 Rd, Plain,  
 7:19:55 Trespass, 10788 Us Hwy 2, Peshastin  
 13:09:07 Noise, 9556 E Leavenworth Rd; Tub  
 13:11:34 Weapons Violati, Leavenworth,  
 13:30:38 Traffic Offense, Front St & Us Hwy 2  
 14:18:21 Animal Problem, 10190 Chumstick Hwy  
 15:17:48 Water Rescue, 16080 River Rd, Plain  
 17:00:58 Animal Problem, Division St & Front St  
 17:47:32 Domestic Distur, 283 Us Hwy 2 # C; Moe's Gi  
 18:53:29 Hazard, 7400blk Icicle Rd  
 20:24:40 Extra Patrol, Chumstick Hwy Mp 5  
 20:41:38 Welfare Check,

Leavenworth Waterfront Park 21:35:23 Welfare Check, 800blk Front St,  
 22:28:44 06/22/24 Accident No Inj, Birch St & Central Ave

## June 24

0:02:01 Animal Problem, 11687 Sunitsch Canyon Rd,  
 6:47:30 Welfare Check, 9724 E Leavenworth Rd  
 9:05:21 Welfare Check, 321 Park Ave# H  
 9:21:34 911, 309 8th St; Posthotel  
 15:22:35 Disturbance, 8312 River View Rd, Peshastin

## June 25

3:58:17 Assault, 817 Commercial St; Cascade Lv  
 10:52:45 Assist Public, 40 Broken O Ln, Leavenwort 6  
 15:27:24 Noise, 20355 Chiwawa Loop Rd, Lak 1  
 18:25:21 4905 Icicle Rd; Eight Mile

22:45:38 116 River Bend Dr; Safeway

## June 26

0:37:55 Welfare Check, Snow Lakes Trailhead  
 9:12:32 Traffic Offense, 9000blk Icicle Rd  
 9:27:12 911, 190 Us Hwy 2; Der Ritterho  
 9:28:42 Atl/Atc, 18183 Winton Rd, Lake Wenanchoe  
 9:42:45 Property, 935 Front St; Icicle Brewery  
 11:34:15 Alarm, 200 8th St; Los Camperos  
 14:01:46 Vehicle Prowl, 1111 Commercial St  
 14:11:32 Harass/Threat, Birch St & Ski Hill Dr  
 14:50:32 Scam, 11492 Us Hwy 2  
 14:55:03 Dui, Icicle Rd & E Leavenworth  
 17:59:55 Cps/Aps Refer, 11425 Clark Canyon Rd  
 18:05:26 Diversion, 1000 Front St# A; Msgard

18:22:47 Fraud/Forgery, 10170 Main St; Peshastin  
 20:26:02 Atl/Atc, 911 Commercial St# A  
 22:19:41 Atl/Atc, 8979 Motel Rd, Dryden  
 22:24:57 Noise, 20752 Chiwawa Loop Rd  
 23:01:28 911, 9110 Icicle Rd  
 23:56:00 Alarm, 7409 Icicle Rd; Canyon Wre

## June 27

0:37:55 Welfare Check, Snow Lakes Trailhead  
 8:24:01 Alarm, 10781 Lone Pine Dr, Peshastin  
 9:09:38 Property, Front St & 9th St  
 11:57:12 Traffic Offense, Fish Hatchery Boat Launch  
 13:49:58 Scam, 9149 Merry Canyon Rd  
 15:45:34 Assist Public, 18636 Beaver Valley Rd; Plain  
 19:14:19 Domestic Distur, 12235 W Shugart Flats Rd

**For the latest local news and advertising see the Ward Media websites**

leavenworthecho.com      qcherald.com

cashmerevalleyrecord.com      lakechelanmirror.com

# BUSINESS & SERVICE DIRECTORY

ADD YOUR BUSINESS OR SERVICE TO THIS DIRECTORY:  
**509-731-3321**

**Quick 'n Easy Residential Stump Removal**

STUMPS UNLIMITED

10817 North Road, Leavenworth • (509) 548-8222  
 Kim & Rosalie Kozelisky  
 Licensed, Bonded, Insured • Cont. #UPPERVE200PI

**Complete Excavating Service**

Power & Water Systems  
 Dump Truck & Dozer  
 Drainfield Repair  
 Free Estimates  
 Septic Systems  
 Road Grading

Upper Valley EXCAVATING  
 (509) 548-3489  
 Leavenworth, WA  
 Licensed - Bonded - Insured

**Tumwater Drilling and Pump Inc.**

**"Water Treatment Systems Built to Your Individual Problem"**

Free Water Analysis/Estimates

Conveniently located on Hwy 2 across from the Big Y Cafe in Dryden @ 9290 Hwy 2

Tumwater Drilling & Pump, Inc.  
 Cr.Reg.#TUMWADP943RR

509-548-5361  
 www.tumwaterdrilling.com • email info@tumwaterdrilling.com

WATER SOFTENERS, IRON FILTERS, CONDITIONERS, UV FILTERS, REVERSE OSMOSIS, SULFUR, WHOLE HOUSE FILTERS, PREVENTATIVE MAINTENANCE, SERVICE, SALT SALES

**LeafFilter GUTTER PROTECTION**

CALL TODAY FOR A FREE INSPECTION!  
**1-888-360-1582**

**20% OFF** + **10% OFF**  
 Your Entire Purchase\*      Seniors + Military

++ We offer financing that fits your budget!

\* See Representative for full warranty details. \*One coupon per household. No obligation estimate valid for 1 year. 1Subject to credit approval. Call for details: AR #036929922, CA #1025795, CT #HIC0649905, FL #C03055678, IA #C127250, ID #RCE-51804, LA #595544, MA #176447, MD #MHIC148329, MI # 210212986, #262000022, #262000493, #2106212946, MN #IR731804, MT #226192, ND 47304, NE #50145-22, NJ #13VH09953900, NV #408093, NV #899993, NY #H-19114, H-52229, OR #218294, PA #PA069983, RI #RC-11354, TN #7656, UT #1378369-9501, WA #2705169445, WA #EAPFNW2022, WV #WV06912

**Be prepared before the next power outage.**

It's not just a generator. It's a power move.

Receive a free 5-year warranty with qualifying purchase\* - valued at \$535.

Call 888-674-7053 to schedule your free quote!

GENERAC

# Pizza on the move:

## Caravan Woodfired Pizza bakes artisanal pies anywhere and everywhere



The team from left to right: Noah Dahlstrom, Lily Roberts, Stephen Semansky, Danielle Lankhaar

By **TAYLOR CALDWELL**  
Ward Media Staff Reporter

LEAVENWORTH - For Caravan Woodfired Pizza, fresh, artisanal pizza is available wherever, and whenever, with its pizza oven on wheels.

"It is a relatively simple business. You pull up with the oven, you make this mobile caravan kitchen, and then serve up to 100 to 150 pizzas at a big event, and then you break it down, and [it's a] 'See you next time,' kind of thing," said Semansky.

While relatively new, Semansky is focused on catering and pop-up events, such as occasional events at Sage Mountain Natural Foods and making a regular appearance at the Leavenworth Farmers Market. At pop-up events, Caravan typically offers three different pizzas: margarita, a vegetarian, and a meat option.

Semansky often uses local and seasonal ingredients for his pizzas, such as Snowgrass Farm's baby kale and rhubarb, Big Dog Farm's garlic scapes, and Sunny Pine Farm's goat

cheese. For flour, he sources from Cairnspring Mills in Mount Vernon, and Chimaicum Valley Grainery on the Olympic Peninsula.

"That's basically the whole point of it, to bring people together, to eat pizza together, eat a meal together...And then also to think about like, 'Okay, where does this come from?'" said Semansky.

Prior to starting Caravan, Semansky spent many years in the food and wine industry. He got his start in winemaking in Oregon, then came to Leavenworth for the summer of 2015 to work for Baroness Cellars. Semansky permanently moved to town in 2018, and transitioned into food and coffee, working for Argonaut Coffee and Biscuits and most recently, Mana Restaurant, where he worked as a sous chef, then managed. Over the years, Semansky bonded with his coworkers over a love for cooking, many of which are now caterers.

"On our days off, we all love cooking together...We'll have like, a big potluck, and everybody will bring a bunch of amazing food. And so it's funny, we do it partially for income, and partially for fun as well," said Semansky.

It wasn't until last fall that Semansky started to consider

starting a pizza business, when some of those friends convinced him to buy their pizza oven.

"[My friend] was like, 'You know, it'd be a lot easier if I just sold it to you, hint hint'...I figured, what the heck, I may as well jump in and see if it turns into a cool dream that I could fulfill. Or, maybe I just own this huge pizza oven and use it for friends," said Semansky.

His group of friends helped him get started, collaborating with him at catering events in the first few months.

"For the first event, we were driving [the oven] down Western Avenue in Wenatchee to the Armour Wine release party. My friend Lily was following behind me with her car packed full of stuff...I had a smaller truck full of stuff in the back, pulling this oven that was heavier than the towing capacity of this truck, and bouncing down Western Avenue over potholes and construction sites, and I thought, 'Wow, this is a crazy little caravan,'" said Semansky.

From there, Caravan Woodfired Pizza got its start. While serving at markets and other locations this summer, Caravan has often garnered long lines for its woodfired pizza. During its Sage Mountain pop-up on June 12, Semansky said he had a line of about 20 people fifteen minutes before they opened.

"That was a big surprise. I just felt really grateful. The reason we live in Leavenworth is because we love the community so much, and it's the reason why we're here. It just feels really good to have it be well received by friends and strangers," said Semansky.

Caravan Woodfired Pizza will be doing another pop-up event at Sage Mountain on July 9, as well as at Icicle Creek Center for the Arts for the Clinton Fearon & the Boogie Brown Band concert on July 27. Caravan Woodfired Pizza and Caravan Bread can often be found at the Wenatchee Night Market and the Leavenworth Farmers Market. For inquiries, Semansky can be reached at caravanwoodfired@gmail.com.

Taylor Caldwell: 509-433-7276  
or taylor@ward.media



COURTESY OF CARAVAN WOODFIRED PIZZA

The pizza is baked in a mobile pizza oven.

## Icicle Fund consolidates ownership of Sleeping Lady Mountain Resort

LEAVENWORTH - Icicle Fund, owner of Sleeping Lady Mountain Resort, will assume ownership of the land and buildings housing the resort. Combining the business operations and the resort property into one entity secures the long-term viability of the resort and supports founder Harriet Bullitt's aspirations for this beloved local treasure. Ms. Bullitt gifted the Sleeping Lady Mountain Resort business to the Icicle Fund in 2019 and the resort property to the Sleeping Lady Foundation through her will in 2022. "We are grateful to the Sleeping Lady Foundation, Sleeping Lady Resort leadership, and community members who saw an opportunity to unify operations and the property into one common ownership. We are confident this change will help enhance Harriet's vision to create a space supporting the arts, history, and the environment. We look forward with enthusiasm as the resort, Sleeping Lady Foundation, and Icicle Fund move forward in partnership," said Mitsu Iwasaki, Icicle Fund Board President.

Harriet Bullitt was an iconic philanthropist whose love of the arts and passion for conservation and cultural heritage guided her many philanthropic activities. She established the Icicle Fund and the Sleeping Lady Foundation to promote this work in North Central Washington.

Both the Icicle Fund and the Sleeping Lady Foundation agreed that the property transfer is the best way to advance Ms. Bullitt's goals for the Resort. "Consolidating ownership of the business and the property enables both the Sleeping Lady Foundation and the Icicle Fund to realize Harriet's vision and preserve her legacy" said Beth Stipe, Sleeping Lady Foundation Board President.

"Since the Icicle Fund already owns the business of Sleeping Lady Mountain Resort, transfer of the property to the Icicle Fund will not change our day-to-day operations," said Chuck Schuringa, General Manager of Sleeping Lady Resort.

Net profits from the Resort will continue to support the community through the work of the Icicle Fund and its many local and regional partners dedicated to the environment, the arts, and the cultural and natural history of North Central Washington.

Christine Morgan, Executive Director of Icicle Fund, shares, "Ms. Bullitt inspired us to savor life and embrace new experiences and ideas with an open mind and sense of what is possible. With the purchase of the Sleeping Lady property, we are excited for the opportunity to deepen both community members' and visitors' connection to this special place."



TAYLOR CALDWELL / WARD MEDIA

Caravan Pizza had a line before opening during its pop-up event at Sage Mountain Natural Foods.

## The best ways to reheat pasta

By **AARON HUTCHERSON**  
The Washington Post

I'm pro leftovers. Cooking once and being able to eat multiple meals is like giving my future self a timesaving gift. While there are certainly dishes that are best eaten immediately, many others are just as enjoyable - if not more so - a day or three later. Pasta is a prime example. I'd argue that in most instances leftovers can taste just as good as the day they were made as long as they're reheated properly.

The issue with pasta is that it tends to dry out once you put it in the fridge. So, naturally, the solution is to add liquid as you're heating it to return the noodles and sauce to their former glory. The liquid can be whatever makes sense given the dish - water, wine, milk or cream - and you'll want to add a tablespoon or two per serving.

To reheat the dish, consider how it was finished in the first place: either on the stove or

in the oven. (Yes, you can zap it in a microwave, which I've certainly done in the past, but the pasta may reheat unevenly.)

For tomato-based loose pasta dishes, such as spaghetti with meat sauce, put the pasta in a skillet over medium to medium-high heat, add some water or wine and cook, stirring regularly, until the pasta has loosened up and is hot.

For cream-based loose pastas, such as fettuccine Alfredo, you'll want to do pretty much the same, but use your choice of dairy and a much gentler heat, low or medium-low, to keep the sauce from separating.

For baked casseroles, such as lasagna, add a splash of liquid, cover it tightly with foil and bake in a 350 degree oven until warmed through, 15 to 20 minutes.

There are a handful of dishes that you want to eat immediately as their essence is ephemeral. Spaghetti carbonara is the first that

comes to mind, with its silken sauce of eggs and cheese. As recipes editor Becky Krystal wrote, "If you have leftovers, you can frizzle it with a little butter and/or olive oil in a skillet until warmed and slightly crispy in spots, but it won't be the same as when you first cooked it."



SCOTT SUCHMAN FOR THE WASHINGTON POST

A splash of water or wine helps bring leftover tomato-sauced pasta back to life.

## Upper Valley MEND reaches affordable housing fundraising goal, unlocks \$250,000 match

The Leavenworth Echo  
Ward Media

LEAVENWORTH—Upper Valley MEND, a nonprofit organization based in Leavenworth, has successfully completed its Solid Foundations Campaign. It exceeded its initial fundraising goal and secured a \$250,000 matching gift from the Sleeping Lady Foundation.

The campaign, launched in 2023 with an original target of \$6.8 million, ultimately raised over \$7.3 million with support

from more than 350 households, foundations, and businesses. This exceeds the initial goal by \$500,000, funds which will be directed toward the future development of new affordable housing.

The campaign's primary objective was to purchase 31 rental units to be maintained as affordable workforce housing. The additional funds raised will allow for maintenance, modernization, and potential expansion of affordable housing options in the area.

"Our original goal felt like a big ask for our small community, but they surpassed it," said Kaylin Bettinger, Executive Director at Upper Valley MEND. "I am so proud that our community acknowledged the lack of affordable, safe housing options for people who make local wages, and then worked together to do something about it."

Upper Valley MEND, which stands for Meeting Each Need with Dignity, focuses on

providing equitable access to food, housing, wellness, and economic security in the Upper Valley region.

The organization continues to accept contributions to the Solid Foundations Campaign, with future donations earmarked for maintaining and upgrading existing rentals and supporting additional affordable housing development.

For more information, visit <https://www.uvmend.org/solidfoundations>.

WESTERB084CF

1976

**WESTERN RANCH BUILDINGS LLC**  
STEEL & POST FRAME BUILDING CONTRACTORS

NFBA

Your building can be customized just the way you want!

Sold and erected by an independent, locally owned builder

509-884-0555  
www.westernbuildings.com

1107 Walla Walla Avenue  
Wenatchee, WA 98801

RESIDENTIAL • COMMERCIAL • INDUSTRIAL • AGRICULTURAL

# Cascade Medical Foundation Golf Classic raises \$45,000 for local healthcare



COURTESY OF TIM CAMPBELL

Bruce and Marcia Plewman and Kathy and Ted Montgomery pause for a photo during Cascade Medical Foundation's Marson and Marson Cascade Golf Classic on June 17 at Kahler Mountain Club. Before the main tournament started, Kathy Montgomery won the women's putting contest, and Marcia Plewman won the women's chipping contest. Plewman also won the women's "Closest to the Pin" contests on Holes 5 and 16.

The Leavenworth Echo Ward Media

LAKE WENATCHEE— The Cascade Medical Foundation's annual golf tournament raised approximately \$45,000 for local healthcare initiatives.

The Marson and Marson Cascade Golf Classic, held on June 17 at Kahler Mountain Club near Lake Wenatchee, drew numerous participants despite windy conditions. Now in its eighth year under title sponsor Marson and Marson Lumber, the event is the foundation's largest annual fundraiser.

"The golf tournament was an absolute blast, and fundraising results from the tournament exceeded expectations, thanks to the generosity of both our incredible sponsors and enthusiastic and competitive participants," said Rich Adamson, the co-chair of the Foundation's golf committee.

The tournament featured both Low Net and Low Gross categories, with teams led by Kyle Carey and Jack Louws taking first place in their respective divisions. Individual contests included putting, chipping, and closest-to-the-pin challenges.



COURTESY OF TIM CAMPBELL

BJ Louws of the Louws Truss team prepares to tee off. The team, including Darin Huseby, Roy Schiferl, and Jack Louws, claimed first place in the Low Gross category.

Over 50 volunteers assisted with the event, including musical performances by the Leavenworth Alphorns and local musician Jacob Simms.

Since its inception in 1992, the Cascade Medical Foundation has raised more than \$1.9 million to support healthcare services in the community. The foundation works to enhance Cascade Medical's ability to deliver quality healthcare to the local area.

Organizers noted that while final numbers are still being tallied, the preliminary net profit from

the tournament is estimated at \$45,000. These funds will contribute to the foundation's current healthcare campaign, though specific allocation details were not immediately available.

Over 40 sponsors supported the event, including returning major sponsors Louws Truss, Dan's Food Market, Icicle Ridge Winery, and Squirrel Tree Resort.

Prizes were awarded in both Low Gross and Low Net categories.

### In the Low Net category:

- **1st Place:** Kyle Carey, Kyle Lewis, Gary Waunch and Jon Konez
- **2nd Place:** Troy Mobley, Brandon Schuh, Eric Anderson and Brian Eliason

- **3rd Place:** Joe Champagne, John Harrington and Brad Thacker
- **4th Place:** Rich Adamson, Bob Adamson, Jim Adamson and Ron Berschauer

### In the Low Gross category:

- **1st Place:** Jack Louws, BJ Louws, Roy Schiferl and Darin Huseby
- **2nd Place:** Ken Bauman, Dennis McMahon, Dwayne McMahon and Randy Alexander
- **3rd Place:** Jay Traynor, Steve Atchison, Boyd Peterson and Carlton Morris
- **4th Place:** Ryan Stanford, Beau Stonefield, Michel Colwell and Dave Stewart.

### Pre-tourney contests:

- **Putting contest:** Marcia Plewman and Ryan Stanford
- **Chipping contest:** Scott Baker and Kathy Montgomery
- **Driving Range Target Contest:** No one claimed the cash prize this year for this new event.

### On-course contests:

- **Closest to the Pin (Hole 5):** Gary Waunch (2'10") and Marcia Plewman (51'5")
- **Closest to the Pin (Hole 16):** Dallas Otter (4'5") and Marcia Plewman (22'5")
- **Longest Drive (Hole 6):** Max Moholy and Lee Ellen Bell
- **Limited Flite Long Drive (Hole 10):** Chad Zimmerman and Molly Bloss

## Upper Valley Church Guide

To Place Information In The Church Guide Call 509-548-5286

Cashmere	Leavenworth
<p><b>CASHMERE PRESBYTERIAN CHURCH</b> 303 Maple Street • 509-782-2431 Sunday Morning Worship 10:30 a.m. Call for activities: Pastor Charles Clarke • www.cashmepres.org</p> <p><b>CASHMERE COMMUNITY CHURCH</b> 213 S Division St - 509-782-3811 Worship Service at 11:00 AM, Sunday Office Hours: Mon-Thurs, • 10 AM to 1 PM • Pastor Lilia Felicitas-Malana</p> <p><b>CHRIST CENTER</b> Sunday Worship Service at 10 am Lead Pastor Steve Haney • 5800 Kimber Rd., Cashmere • 509-295-8006 christcentercashmere.com</p> <p><b>ST. JAMES EPISCOPAL CHURCH</b> • 509-860-0736 • 222 Cottage Ave., 9 am Formation of Faith, 10 am Worship. Combined service with Grace Lutheran Church. Pastor Rob Gohl</p>	<p><b>CASCADE MOUNTAIN BIBLE CHURCH</b> Office: 509-548-4331 11025 Chumstick Hwy. Please join us Sunday mornings 9 a.m., Sunday School, 10:30 a.m., Worship Service</p> <p><b>LEAVENWORTH COMMUNITY UNITED METHODIST CHURCH</b> 418 Evans Street • 509-548-5619 10 a.m. Sunday Service, Pastor Jo Dene Romeijn-Stout leavenworthumc.org leavenworthumc@outlook.com</p> <p><b>CHURCH OF JESUS CHRIST OF LATTER-DAY SAINTS</b> 10170 Titus Rd. (across from middle school). Church: 509-548-7667 Meetings: Sunday - 10 a.m.</p> <p><b>FAITH LUTHERAN CHURCH - ELCA</b> "Reconciling in Christ Congregation" 224 Benton Street • 509-548-7010 Worship 9:30 a.m. w/coffee following Eva Jenson, Pastor https://www.flcleavenworth.com</p> <p><b>FIRST BAPTIST CHURCH OF LEAVENWORTH, SBC</b> 429 Evans Street, 509- 470-7745 Sunday Worship: 11 a.m. www.leavenworthbaptist.com Email: info@leavenworthbaptist.com</p> <p><b>LEAVENWORTH CHURCH OF THE NAZARENE</b> 111 Ski Hill Drive • 509-548-5292 Sunday Worship 9 a.m. Lead Pastor: Greg Appleby Youth Pastor Paige Derossett Worship Pastor-Jacob Mitchell www.LCN.org</p> <p><b>SEVENTH DAY ADVENTIST CHURCH</b> 10600 Ski Hill Drive • 509-548-4345 Saturday Services • Bible Study 9:30 a.m. • Worship 11 a.m. • 509-860-3997</p> <p><b>SPIRIT LIFE CENTER</b> 210 Benton Street • 509-548-7138 Sunday Worship 10 a.m., Prayer 6 p.m. • Wednesday Bible Study 6:30 p.m. • Pastor Russell Esparza</p>
Dryden	Peshastin
<p><b>DRYDEN COMMUNITY CHURCH</b> Hwy 2 at Dryden Ave. 509-782-2935 Sunday Worship at 11 am. Prayer Meeting Wed. at 6 pm. Pastor Bill Clem</p> <p><b>MID-VALLEY BAPTIST CHURCH</b> 8345 Stine Hill Rd. • 509-782-2616 Worship Service, 10 a.m., • Sunday School, 9 a.m. • Pastor Mike Moore www.midvalley baptist.org</p>	<p><b>LIGHT IN THE VALLEY COMMUNITY CHURCH</b> 8455 Main Street Sunday Worship 10 a.m. Pastor John Romine www.lightinthevalley.org</p> <p><b>NEW LIFE FOURSQUARE CHURCH</b> 7591 Hwy. 97 • 509-548-4222 Sunday Worship, 10 a.m. Pastors, Darryl and Mindy Wall newlifeleavenworth@gmail.com FB page: newlifeleavenworth www.newlifeleavenworth.com</p>
Plain	Monitor
<p><b>PLAIN COMMUNITY CHURCH</b> Serving Our Valley Since 1941 12565 Chapel Dr. 509-763-3621 Looking for you at 10:30 this Sunday! plaincommunitychurch.org facebook.com/plaincommunitychurch office@plaincommunitychurch.org</p>	<p><b>UNITED METHODIST CHURCH</b> 3799 Fairview Canyon - 509-782-2601 Worship Service at 9:00 AM, Sunday Pastor Lilia Felicitas-Malana</p>

## NEVER WORRY ABOUT POWER OUTAGES AGAIN.

Gain peace-of-mind with the most powerful line of home standby generators.

When choosing a standby generator, check the specifications closely. Only Briggs & Stratton PowerProtect™ generators feature NGMax™ technology, delivering up to 12% more power on natural gas than the competition. For homes with natural gas, Briggs & Stratton is the ideal choice.

**Industry-Leading Comprehensive Warranty for Years of Worry-Free Performance** | Standard Warranty of **7 YEARS** Warranty of **\$849 Value**

Call 1-877-597-7536

## Summer starts here!

NORTHWEST SWAG WORKS

APPAREL & PROMOTIONAL PRODUCTS

White glove service so you can focus on your business.

509-731-3624



Public Notices	Public Notices	Public Notices	Public Notices	Public Notices	Public Notices
<p><b>NOTICE OF TRUSTEE'S SALE OF COMMERCIAL LOAN PURSUANT TO THE REVISED CODE OF WASHINGTON CHAPTER 61.24, ET.SEQ.</b></p> <p>Grantors: Erle Terrell IV                      Grantee/Current Beneficiary of the Deed of Trust: Balec REI, LLC and Flynn 69 Investments, LLC                      Current Trustee of the Deed of Trust: Rainier Trustee Services, Inc.                      Current mortgage servicer of the deed of trust: Balec REI, LLC and Flynn 69 Investments, LLC                      Reference number of the Deed of Trust: 2572134                      Parcel number(s): 222010590050</p>		<p><b>TOTAL:</b> <b>\$88,115.35</b></p> <p>Default other than failure to make payment due: N/A</p>			
<p>NOTICE IS HEREBY GIVEN that the undersigned Trustee, Rainier Trustee Services, Inc. will on July 12, 2024, at the hour of 10:00 a.m., at the main entrance of the Chelan County Courthouse, 350 Orondo Street, Wenatchee, WA 98801, sell at public auction to the highest and best bidder, payable at the time of sale, the following described real property, situated in the County of Chelan, State of Washington, to wit:                      The Southeasterly 50 Feet of Lots 20, 21 and 22, Block 21, Amended Great Northern Plat of Wenatchee, Chelan County, Washington, according to the Plat Thereof Recorded in Volume 1 of Plats, Page 15.                      Chelan County Tax Parcel No.: 222010590050                      Property Address: 315 Oregon St, Wenatchee, WA 98801                      Which is subject to that certain Deed of Trust recorded in the real property records of Chelan County, Washington on August 19, 2022 under Recording No. 2572134, in which Erle Terrell IV, is Grantor, Gary P. Shuetz, Attorney, is the original Trustee, and Balec REI, LLC, a Washington limited liability company (as to 50%); and Matthew P. Flynn and Bethany P. Johnson, a married couple (as to 50%), are the original Beneficiaries. Balec REI, LLC and Flynn 69 Investments, LLC are the current holders of the obligation secured by the above referenced Deed of Trust.</p>		<p>The sum owing on the obligation secured by the Deed of Trust is: Principal \$72,000.00 together with interest as provided in the note or other instrument, and such other costs and fees as are due under the note or other instrument secured, and as are provided by statute.</p>			
<p>No action commenced by the Beneficiary of the Deed of Trust is now pending to seek satisfaction of the obligation in any Court by reason of the Borrower's or Grantor's default on the obligation secured by the Deed of Trust.</p>		<p>The above-described real property will be sold to satisfy the expense of sale and the obligation secured by said Deed of Trust as provided by statute. The sale will be made without warranty, express or implied, regarding title, possession, or encumbrances on July 12, 2024. The defaults referred to in paragraph III must be cured before the sale on July 12, 2024 to cause a discontinuance of the sale. The sale will be discontinued and terminated if at any time before the sale the defaults as set forth in paragraph III are cured and the Trustee's fees and costs are paid. The sale may be terminated any time before the sale, by the Borrower, Grantor, any Guarantor, or the holder of any recorded junior lien or encumbrance paying the principal and interest plus costs, fees, and advances, if any, made pursuant to the terms of the obligation and/or Deed of Trust, and curing all other defaults.</p>			
<p>The Default for which this foreclosure is made is as follows: Failure to pay when due the following amounts which are now in arrears:                      Failure to pay the following past due amounts, which are in arrears:  <b>Note and Deed of Trust are due in full:</b>                      Unpaid Principal Balance: \$72,000.00                      Accrued Interest through 4/01/2024: \$10,056.60                      Extension Fee: \$ 720.00                      Servicing Fees: \$ 450.00                      Trustee's Fees/Costs: \$ 4,888.75</p>		<p>A written Notice of Default was transmitted by the Trustee to the Borrower, Grantor, Guarantors and other interested parties at the following addresses:                      Erle Terrell IV                      5000 LK WASHINGTON BLVD NE, #E301                      RENTON, WA 98056                      Erle Terrell IV                      315 Oregon St                      Wenatchee, WA 98801</p>			
<p>The effect of the sale will be to deprive the Grantor and all those who hold by, through or under the Grantor of all their interest in the above-described property.</p>		<p>by both first class and certified mail on February 28, 2024, proof of which is in the possession of the Trustee; and the Borrower and Grantor were personally served on March 1, 2024, with said written Notice of Default was posted in a conspicuous place on the real properties described in paragraph I above, and the Trustee has in his possession proof of such service or posting.</p>			
<p>The Trustee whose name and address is set forth below will provide in writing to anyone requesting it, a statement of all costs and fees due at any time prior to the sale.</p>		<p>The effect of the sale will be to deprive the Grantor and all those who hold by, through or under the Grantor of all their interest in the above-described property.</p>			
<p>Published in the Leavenworth Echo/Cashmere Valley Record on June 12 and July 3, 2024. #7915</p>					

**Peshastin Creek**

*Continued from page A1*

increases the shear stress, the erosion, and everything,” said Jason Lundgren, Executive Director of Cascade Fisheries. At the site of the confluence, Peshastin Creek maintained its floodplain paths, with a winding primary channel and a straight secondary channel leading into the Wenatchee River. However, when the access road was built in 1975, the creek was straightened to what it is today, which is one narrow, fast-moving channel, with little habitat. Additionally, the area surrounding the confluence is contaminated with lead shot from the former Dryden Gun Club nearby.

The project will begin late this summer with clearing the site of lead and fencing off pesticide contaminated areas. Then, in 2025 Cascade Fisheries will rebuild a channel similar to the original, recreating a floodplain. Lundgren estimates the crew will move about 20,000 cubic yards of material in order to add the accessory channel. Wood will also be added to create deeper pools and hiding places for fish.

While the project will have a direct impact on fish, it is also expected to have a broader impact on the area, by cleaning up toxicities, building climate change resilience, and increasing biodiversity.

“When you distribute the water across the floodplain, there tends to be a bunch of water quality benefits. When you’re reconnecting sort of the groundwater table, it tends to cool water temperatures, and you tend to have more quantity and diversity of macroinvertebrates which feed the whole future the whole food web,” said Lundgren.

Vegetation is also expected to improve and expand, which will in turn attract more wildlife.

The cleanup will not overlap with peak boating season, but construction may, said Lundgren. However, public access will be maintained throughout construction, with traffic control and minor delays.

According to Lundgren, completion of the project will cost just under \$3.5 million. The Department of Ecology will be funding the cleanup, with funding support from Bonneville Power, Confederated Tribes of the Colville Reservation, Bureau of Reclamation, and the State Salmon Recovery Board for restoration.

Taylor Caldwell: 509-433-7276 or taylor@ward.media



# When drugs and the sun don't mix

I filled two water bottles from my kitchen sink on a bright, sunny morning in mid-July. I called over to my 6-year-old niece, Crystal, “Don’t forget the bread!”

We had enjoyed a leisurely breakfast of French toast and eggs, then packed up the leftover bread to feed the ducks. Stashing the water bottles in my backpack, I grabbed my car keys off the kitchen table. Holding open the door to my apartment, Crystal proudly carried her sack of bread pieces out to the car.

Fifteen minutes later, we pulled into the parking lot of a small city park whose best feature was a mid-sized pond with friendly ducks.

The pond was next to a play area with sand, swings, and a jungle gym. Although other kids were at the pond, the ducks swam toward us when they saw us tossing small chunks of bread into the water.

Racing each other, the ducks scooped up or dived down for each piece. Crystal giggled as one duck stared at her, then nimbly caught the bread she threw to him mid-air.

Once we ran out of bread, we headed to the playground. It was noon, sunny, and getting

hot. I was glad we came while the temperature was reasonable. Thirty minutes later, Crystal walked over to the table where I was sitting. “Aunt Louise, I feel hot.”

When she got closer, I looked up from my magazine and gasped. Crystal’s face was a deep tomato red.

I opened a bottle of water from my backpack and handed it to her to drink. As I drove back home, I felt devastated.

“How could this have happened?”

The answer was back in my apartment. When my eye caught the prescription bottle of medicine Crystal was taking for a skin infection, I checked the label. Sure enough, a small sticker warned about exposure to the sun!

Her antibiotic plus being outside in direct sunlight in the middle of the day triggered her skin reaction.

Exposing our skin to sunshine causes it to react by “tanning” or “burning.” Sunlight contains ultraviolet radiation, wavelengths called UVA and UVB, which can trigger a rash, itching, and even sunburn. This exaggerated reaction to the sun is called photosensitivity.

Regular sunlight has approximately 20 times as much UVA radiation as UVB. Sunburn, skin cancer, and accelerated skin changes such as wrinkles and spots, called photoaging, are caused primarily by exposure to UVB radiation.

UVB rays are most intense between 10 am and 4 pm. UVB radiation also helps our skin produce Vitamin D.

In contrast, UVA rays trigger photosensitivity reactions in people taking certain medicines, like Crystal.

Thankfully, Crystal’s red cheeks faded over the next few hours without further exposure to the sun. Her medicine had increased her skin’s sensitivity to UVA wavelengths in the sunshine, and wearing sunscreen with UVA protection would have protected her skin from that reaction.

The effectiveness of a particular sunscreen is measured by how much protection it gives you against UV radiation, called its SPF, or Sun Protection Factor. The bigger the SPF number, the better the protection. For example, if you apply sunscreen with an SPF of 15 correctly, you could stay out

in the sun 15 times as long without burning compared to without it.

Sunscreens come in two main types: chemical and physical. Chemical sunscreens work by absorbing specific wavelengths of UV radiation before they penetrate your skin, while physical sunscreens reflect and scatter UVA and UVB radiation.

**Here Are 4 Tips for Avoiding Sun Sensitivity to Your Medicine:**

- 1. Cover up.**  
 AVOID direct sun and tanning beds until you finish your medicine. When outside, wear long sleeves and a hat with a brim at least 4 inches wide, or apply sunscreen with UVA and UVB protection.
- 2. Choose an SPF of at least 30.**  
 But you can’t just apply it once for all-day coverage. To ensure you get complete protection from your sunscreen’s SPF, it’s important to renew it frequently, every 2-3 hours.
- 3. Think ahead.**  
 To be most effective, sunscreens need time to bind



to your skin. Apply sunscreen at least 15 minutes before you expect to be in the sun.

**4. Don’t skimp** when applying sunscreen. Be generous when applying sunscreen. The FDA estimates that an adult in a swimsuit should use about 4 and 1/2 teaspoonfuls when applying sunscreen to their whole body.

**5. Reapply frequently.** Sunscreen should be renewed frequently, especially after swimming, playing in the water, or sweating. Also, remember to reapply after drying yourself off with a towel.

*Dr. Louise Achey, Doctor of Pharmacy, is a 44-year veteran of pharmacology and author of Why Dogs Can't Eat Chocolate: How Medicines Work and How YOU Can Take Them Safely. Get clear answers to your medication questions at her website and blog, TheMedicationInsider.com. ♥2024 Louise Achey*

## U.S. to receive first pandas in 20 years after farewell party in China

By JENNIFER HASSAN  
*The Washington Post*

Giant panda lovers rejoice, two of the black and white fluffballs are headed to the United States from China - an operation involving a motorcade, a chartered flight, a dedicated entourage and a bespoke menu, according to Chinese wildlife officials.

Yun Chuan and Xin Bao are the first pair of pandas to enter the United States in more than two decades, and will set up home at the San Diego Zoo in California, the San Diego Zoo Wildlife Alliance said in a statement.

Before their big move, the pair attended an elaborate farewell ceremony in their honor in China’s Sichuan Province on Wednesday, which U.S. and Chinese dignitaries attended along with San Diego Zoo Wildlife Alliance President and CEO Paul Baribaul and Todd Gloria, San Diego mayor.

Three-year-old female panda Xin Bao is “gentle and

well-behaved,” while male panda Yun Chuan, four, is “smart and lively,” the China Conservation and Research Center for the Giant Panda said in a statement, adding that the duo would enjoy “carefully prepared fresh bamboo, bamboo shoots, fruit, vegetables, and specially made steamed buns” during their flight.

The duo will also be accompanied by several experienced nutritionists and vets, and once at the zoo, the Chinese experts will stay for around three months to help the pair through the quarantine and adjustment period, the center added.

The pandas’ relocation is part of ongoing efforts between the two nations to protect the mammals, officials from both nations said. Pandas are no longer considered endangered but their status is listed as “vulnerable,” according to The World Wildlife Fund (WWF).

The animals are also star attractions in zoos in the

United States - and have long been associated with China’s diplomatic efforts.

China is home to the only natural habitat for pandas, and panda diplomacy can be traced as far back as 685 A.D. Since then the mammals have been sent to nations around the world, serving as strategic goodwill ambassadors, attempting to soften China’s image abroad. In recent decades, China has lent pandas on renewable 10-year contracts for a fee, with all cubs born abroad to be sent back before they turn four.

The bears often become celebrities in the process - while the departure of three pandas from the Smithsonian’s National Zoo in Washington last year triggered tearful farewells and fears the United States would eventually be left with no pandas.

Yun Chuan is the son of Zhen Zhen, who was born at San Diego Zoo in 2007, the San Diego Wildlife Alliance said.

The pandas will be given “several weeks” to adjust to their new surroundings before going on display to members of the public, alliance said, adding that the zoo would share information about how to see the duo once health care teams deemed the pandas ready to meet the public.

WWF estimates that just 1,860 giant pandas remain in the wild, facing threats that include climate change, loss of food supplies and habitat fragmentation.

“Although the conservation status of the giant panda is improving, there is still much work needed to ensure they remain on the path to recovery with healthy and flourishing populations,” the statement said.

Chinese wildlife officials said the loan of the two pandas would open a new round of panda conservation cooperation between the United States and China. The China Wildlife Conservation Association added that

it hoped conservation efforts between the two countries would also lead to improvements in managing panda diseases, and help promote “friendship between Chinese and overseas peoples.”

It is not just San Diego that is eagerly awaiting a panda delivery.

Later this year, two new giant pandas will arrive in Washington, the Smithsonian’s National Zoo announced last month. The move came as a surprise, given the tense relationship between the United States and China, which owns and leases all giant pandas in U.S. zoos, The Washington Post reported at the time.

In fact, China’s pandas are so popular in Washington that one Chinese ambassador previously joked: “Many people don’t realize it, but there are actually two Chinese ambassadors in Washington: me and the panda cub at the National Zoo.”

broader markets, the tree fruit industry in Leavenworth expanded significantly during the 1920s and 1930s. Farmers began experimenting with different pear varieties most suited to the climate. Bartletts and Anjous became particularly successful, known for their flavor, ability to thrive in the region, and reliability during transportation and storage.

The continued success of the orchards during the Great Depression and Dust Bowl years led to the migration of “Okies” and “Arkies” from

the American prairie to the Wenatchee Valley in search of agricultural work. Mexican immigration to the orchards followed as early as the 1940s and began in earnest in the ‘50s and ‘60s.

By that time, pear cultivation had become a significant part of the economy in Leavenworth and nearby communities, and the area gained recognition for its high-quality produce. The introduction of modern agricultural practices, including the use of pesticides and fertilizers, continued to improve crop yields and

quality. In addition, packing and storage facilities were modernized, allowing for better preservation and distribution.

While the Upper Valley from Monitor to Leavenworth remains a major world producer of world-class pears, Leavenworth’s orchard footprint has become smaller with land development. Nonetheless, orchards remain and continue to produce fruit commercially.

Beyond its economic importance, pear cultivation in Leavenworth has also had a cultural impact, influencing

festivals, football rivalries (i.e., the “Pear Bowl” between Leavenworth and Cashmere), and events celebrating the harvest season. Together with its Bavarian theme, agricultural heritage and the pear remains an integral part of Leavenworth’s identity.

*Caroline Menna is an intern for Ward Media and a rising senior (Class of 2025) at Cascade High School. She will serve as Editor-in-Chief of the Cascade High School Publications Group for the 2024-2025 academic year.*

Use this code to reveal some incredible Independence Day facts:

- = 0
- = 1
- = 2
- = 3
- = 4
- = 5
- = 6
- = 7
- = 8
- = 9

# America's Independence Day

## Too Bad, King George!

On July 4, 1776, people living in the American Colonies declared their independence. They wanted to be independent, or free, from the rules of King George III of England. They wanted to form their own country.

They wrote a document to send to King George. It was called the Declaration of Independence, signed on July 4, 1776. This famous document says that all people are created equal and with certain rights.

Unscramble the words to discover the rights mentioned in the Declaration of Independence.

**EFLI** \_\_\_\_\_

**BILTEYR** \_\_\_\_\_

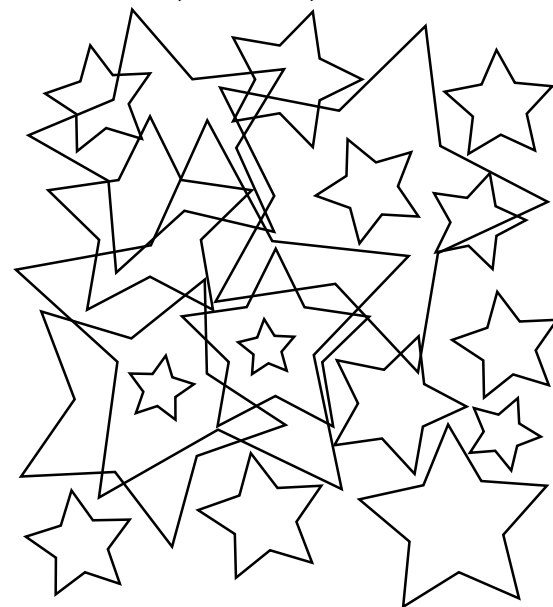
**PINESPHAS** \_\_\_\_\_

## Parade Puzzle

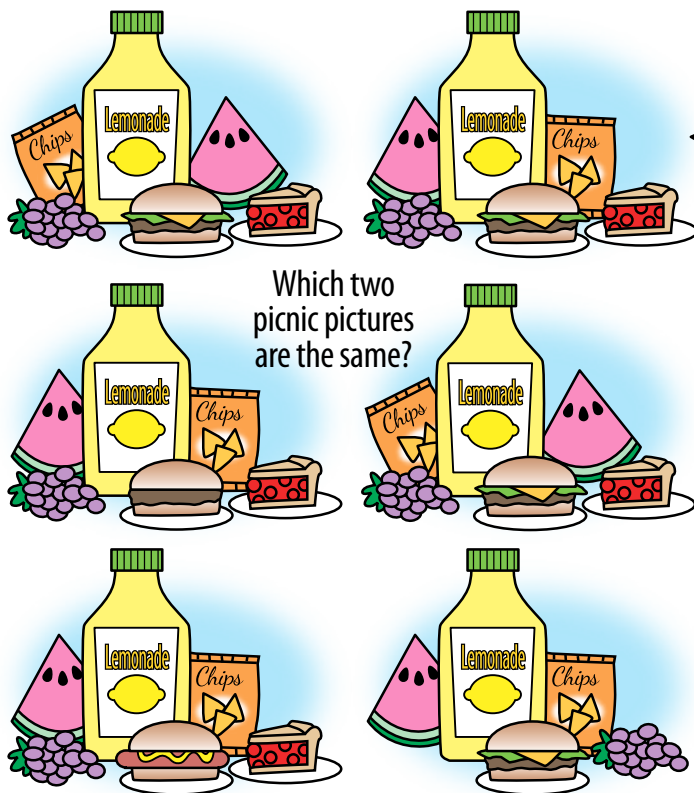
Can you find the letters L-I-B-E-R-T-Y hidden here?



How many stars can you find below?



**BONUS:** How many stars can you find on this page?

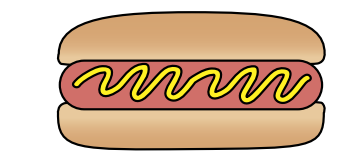


Which two picnic pictures are the same?

## Extra! Extra! POP! BOOM! ZING!

**Onomatopoeia** describes words that sound like the sound they make when you say them. For example, when you say, "Pop!" it sounds a bit like a pop. Look through the newspaper. Can you find three to five examples of onomatopoeia?

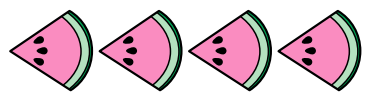
**Standards Link:** Language Arts: Vocabulary development.



Number of hot dogs that are eaten by Americans on Independence Day:



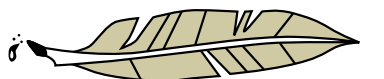
million



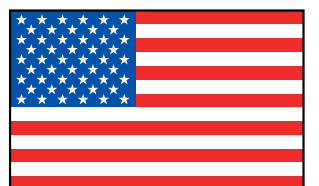
Amount of money spent on watermelon for the July 4th holiday:



million



Number of people who signed the Declaration of Independence:



Percentage of Americans who own an American flag:



%

Sources: History.com, WalletHub.com

**FREE DOWNLOAD:** Kid Scoop Teacher Activity Pack!

With hundreds of topics, every **Kid Scoop** printable activity pack features six-to-seven pages of high-interest extra learning activities for home and school! Get your free sample today at:

[kidscoop.com/activity-pages/](http://kidscoop.com/activity-pages/)

## Kid Scoop VOCABULARY BUILDERS

This week's word: **INDEPENDENCE**  
The noun **independence** comes from the adjective independent meaning not under the control or rule of another.

America gained **independence** in 1776.

Try to use the word **independence** in a sentence today when talking with your friends and family.

## Kid Scoop Puzzler

### Founding Father Favorite Food

One of the original signers of the Declaration of Independence visited Europe and fell in love with pasta. He brought back a machine to make macaroni and later, he became the first president to serve macaroni and cheese as part of an official state dinner. Which Founding Father was this? Circle every fourth letter to find out!

ASDTFJKHDZMOVWYMLNR  
AQMP SLWBJVCTEKOLF DQN  
FTRYELOS RGBXSUTROMBWN

★ ☆ T H ☆ ★

**Standards Link:** Reading Comprehension: Follow simple written directions.

## Double Double Word Search

- MACARONI
- ENGLAND
- SIGNERS
- PARADE
- FATHER
- CHEESE
- GEORGE
- PEOPLE
- RULES
- PASTA
- EQUAL
- WORDS
- KING
- FREE
- LIFE

Find the words in the puzzle. How many of them can you find on this page?

E I N O R A C A M P  
G S C C E L D E A E  
R I B H R P N R A O  
O G R E H T A F T P  
E N U E E D L S T L  
G E L S E A G G T E  
F R E U H N E F A  
O S S Q U I E F I L  
R T E H K S D R O W

**Standards Link:** Letter sequencing. Recognize identical words. Skim and scan reading. Recall spelling patterns.

MEDIA PARTNER



## EXPLORE THE WORLD WITH YOUR LOCAL LIBRARY.



AT YOUR LIBRARY

- Storytimes
- After school events & activities
- Check out books, comics, movies, & more



NCWLIBRARIES.ORG

- Free homework help
- Britannica Library
- Stream books, comics, movies, & more