



**Marketing Matters**  
Omnichannel marketing: The key to reaching customers everywhere  
Community | A2



Page B4

# Cashmere Valley Record

A Ward Media Publication

Serving the Cashmere Valley since 1907  
Volume 117 • No. 23

June 5, 2024

cashmerevalleyrecord.com  
Single Copy \$1.00

## Chelan County homeowners could receive technical and financial assistance to protect their home in a wildfire

By **TAYLOR CALDWELL**  
Ward Media Staff Reporter

LEAVENWORTH – In the last decade, Cascadia Conservation District (Cascadia CD), a non-regulatory entity that provides landowners with assistance on natural resource projects, has ramped up its programs to help increase wildfire resiliency in Chelan County. Most recently, Cascadia CD is launching the Home Hardening

Rebate Program, which provides educational and financial assistance to landowners in Chelan County preparing their homes or structures for wildfires.

“It’s trying to incentivize people to do some of these home hardening practices...These are all things that have a lot of research behind them as being effective measures you can take for your home,” said Cascadia CD Forest and Community Resilience Specialist

Isobel Woolner.

According to Wildfire Risk to Communities, the majority of homes lost to wildfire are first ignited by embers and small flames. Reducing the susceptibility of the home and its immediate surroundings greatly increases the chances of a home surviving a wildfire. The educational website identifies the home and its surrounding five feet as the most vulnerable to embers.

Through the Cascadia CD program,

homeowners could be eligible for up to a \$500 rebate for participating in a home hardening practice such as caulking exterior gaps in structures, putting metal flashing on siding or deck footing, laying a gravel perimeter around structures, installing metal mesh screening under decks, replacing exterior vents or window screens, covering gutter, or replacing or retrofitting fences. The program is funded by the Washington State Conservation Commission.

Anyone who owns or rents land or property in Chelan County will be eligible to sign up, but renters will have to have a landowner agreement with the owners of the property. Provided that the program is in its pilot year, Cascadia CD will approve sign-ups on a first-come, first-served basis.

While signing up, those who have already had a wildfire risk home

See **CHELAN COUNTY** Page **B2**

## Cashmere High School art students win awards at State Superintendent’s art show

PHOTOS COURTESY OF CASHMERE HIGH SCHOOL



Cashmere High School art student Kimberly Strong won an honorable mention with her oil pastel drawing “Denim Debut” at the Superintendent’s High School Art Show.



Cashmere High School art student Savannah Hamilton won a “Central Washington University Art for Change Award,” which includes a \$2,000 tuition waiver scholarship for CWU at the Superintendent’s High School Art Show.

By **QUINN PROPST**  
Ward Media Staff Reporter

CASHMERE – Two Cashmere High School art students won awards at the Superintendent’s High School Art Show in Olympia.

Savannah Hamilton won a “Central Washington University Art for Change Award,” which includes a \$2,000 tuition waiver scholarship for CWU.

Kimberly Strong won an honorable mention with her oil

pastel drawing “Denim Debut.” “Both of these students are extremely talented and hard working,” CHS art instructor Alan Pace said.

“They’re also very thoughtful, interesting, and creative individuals, which I believe comes through in their artwork,” he said.

After winning categories at the Regional High School Art Show in March, the two students qualified to send their pieces to the state show.

The regional juried show, which had over 200 entries, was open to all High Schools in the North Central Educational Service District.

The show is made possible each year through the sponsorship of the North Central Educational Service District and partnership with the Office of Superintendent of Public Instruction.

Quinn Propst: 509-731-3590 or quinn@ward.media.



COURTESY OF NCW LIBRARIES

Cashmere freshman Grace Hodges won first place in the 13th annual Teen Short Fiction Competition for her story “Stag”.

## Teens honored for excellence in fiction writing

By **QUINN PROPST**  
Ward Media Staff Reporter

CASHMERE – Cashmere High School freshman Grace Hodges won first place in the 13th annual Teen Short Fiction Competition for her story “Stag”.

“I was really excited,” Hodges said. “I was shocked. But I was really, really excited because I haven’t really done any contest like this in the past. So yeah, it was a really cool opportunity.”

The competition is sponsored by Write on the River and NCW Libraries.

Librarians from across the region, along with members of NCW Libraries’ Teen Library Council, judged an all-time high number of competitive entries. Along with Hodges, two other students were selected to share the \$200 cash award for their original fiction writing.

Orlo Parkinson, a freshman at Liberty Bell High School in Twisp received an Honorable Mention for his story “Like Love, Like Lightning”. And Ella Stepanov, a homeschooled sophomore from Chelan, also received an Honorable Mention for her story for “The Sound of Silence”.

“As someone who was a teen writer myself, I was always looking for opportunities to get my work out there. This contest, in partnership with Write On The River gives teens in NCW that opportunity,” said NCW Libraries Teen Services Manager Jessica Lynch. “They get to share their stories and ideas with their community and can use this as a building block to a career as a writer or in a creative field. It’s so important for teens to have an entry point into creative fields and to have conduits for expressing themselves and being recognized for their work.”

Hodges was inspired to enter the

See **TEENS** Page **B2**

## Wenatchee River Bluegrass Festival set to delight music fans



PHOTOS COURTESY OF WENATCHEE RIVER BLUEGRASS FESTIVAL

The popular bluegrass band Appalachian Roadshow will perform at the Wenatchee River Bluegrass Festival next weekend.

By **QUINN PROPST**  
Ward Media Staff Reporter

CASHMERE – The Wenatchee River Bluegrass Festival 2024 will kick off next weekend at the Chelan County Expo Center.

The festival’s executive director, Marie Vecchio, said the schedule will be similar to previous years, but this year will feature three Northwest bands as well as award-winning bands from back east.

The Northwest bands are Friends of Larry, Slipshod, and Heartbreak Pass. Vecchio said they are well-loved Washington state bands that they have featured in the past.

Bands coming from outside of Washington are Carley Arrowood, Seth Mulder, Midnight Run, and Appalachian Roadshow.

“All of these bands, Carley Arrowood, Seth Mulder and Midnight Run, Appalachian Roadshow, all these are people that you hear on

Sirius music if you listen to Bluegrass Junction,” Vecchio said.

“Carly is a newcomer, as far as she’s been performing for a few years now,” Vecchio said. “Her band is tight. She’s an amazing fiddle player. And she has amazing vocals. So that band is fun to watch.”

“Seth Mulder, I’ve never seen him in person, but I hear him all the time on Sirius music on Bluegrass

See **BLUEGRASS** Page **B2**



Barry Abernathy of Appalachian Roadshow plays the banjo. The band will play at the Wenatchee River Bluegrass Festival next weekend.

## Inside The Record this Week

5 Things to do This Week.....	A2	Community Calendar.....	A3	Marketing Matters.....	A2
Business Directory.....	A3	Classifieds.....	B3	Sheriff Report.....	A3
Church Guide.....	B2	Dr. Louise.....	B1	Advertising Flyers.....	Safeway



**\$1.00**  
Phone:  
509-548-5286

www.cashmerevalleyrecord.com

# Cashmere Valley Record

© Ward Media, LLC 2024



WARD MEDIA

### On the Internet

Website: [www.cashmerevalleyrecord.com](http://www.cashmerevalleyrecord.com)  
E-mail: [news@ward.media](mailto:news@ward.media)

### Office hours

Hours: 9 a.m. - 5 p.m. except weekends, or call 509-548-5286

### Contact information

#### CEO & Publisher

**Terry Ward**

509-731-3284  
[terry@ward.media](mailto:terry@ward.media)

#### COO & Co-Owner

**Amy M. Yaley**

509-731-3321  
[amy@ward.media](mailto:amy@ward.media)

#### Multimedia Sales Manager

**Sherrie Harlow**

253-255-5920  
[sherrie@ward.media](mailto:sherrie@ward.media)

#### Reporter

**Quinn Propst**

[quinn@ward.media](mailto:quinn@ward.media)

#### Circulation

509-293-6780

#### Deadlines

Calendar Listings	Noon, Friday
News Submissions:	Noon, Friday
Letters to the Editor:	Noon, Friday
Display Advertising:	5:00 p.m., Thur.
Legal Notices:	Noon Friday
Classified Ads:	Noon Friday

#### Subscriptions

In Chelan County (yearly)	\$40
For print and online	\$45
In State-Out of County (yearly)	\$50
Online E-edition	\$40
Out of State	\$52

The Cashmere Valley Record does not refund subscription payments except to the extent that it might fail to meet its obligation to publish each week, in which case the cost of the issues missed would be refunded as an extension. Subscriptions may be transferred to another individual or organization.



© Ward Media, LLC prints on recycled newsprint with soy ink. Please recycle.

#### Letters policy

The Cashmere Valley Record welcomes letters to the editor. All letters must be accompanied by the author's name, a home address and a daytime phone number (for verification purposes only). Letters may be edited for length, clarity, accuracy and fairness. No letter will be published without the author's name. Thank you letters will only be printed from nonprofit organizations and events. We will not publish lists of businesses, or lists of individual names. Email your letters to [letters@ward.media](mailto:letters@ward.media).

#### Corrections

The Cashmere Valley Record regrets any errors. If you see an error, please call 509-548-5286. We will publish a correction on this page in the next issue.

#### News tips

Have an idea for a story? Call the Record at 509-548-5286 email [news@ward.media](mailto:news@ward.media)

#### Classified Advertising

Classified ads can be placed during normal office hours by calling 509-293-6780 or by emailing [classifieds@leavenwortheco.com](mailto:classifieds@leavenwortheco.com).

#### Legal Advertising

Legal ads can be placed during normal business hours by calling 509-293-6780 or by emailing [legals@ward.media](mailto:legals@ward.media)

#### Obituaries

Obituaries can be placed during normal business hours by calling 509-548-5286 or by emailing [obits@ward.media](mailto:obits@ward.media)

#### Services

Back Issues are available up to one year after publication for a small fee. Archive Research \$25 per hour

Cashmere Valley Record (USPS 092-600) is published every Wednesday by Ward Media LLC, 29 S. Wenatchee Ave., Suite A, Wenatchee, WA 98801  
Telephone: 509-548-5286  
Periodical postage paid at Leavenworth, Wash. (and additional mailing offices)  
Postmaster: Send address corrections to: Cashmere Valley Record 131 S. Apple Blossom Drive #109, Chelan, WA 98816

#### Classified Weekly Rates

\$15.00 for first 30 words .10 for each additional word over 30 words  
Borders, bold words, headlines, logos and photos subject to additional charges.

## Get your event in the spotlight with Ward Media!

If you have an exciting event to share, email Reporter Quinn Propst at [quinn@ward.media](mailto:quinn@ward.media). We'll showcase the five most captivating events of the week, giving your event the recognition it deserves. Even if your event isn't among the top five, it will still be added to our events calendar and featured online. Don't miss this chance to make your event shine!

### River Walk

Pybus Market will host a River Walk on Wednesday, June 5, from 7:30-8:30 p.m. "We will meet outside on the South Plaza of the Pybus Public Market, at the top of the stairs to the loop trail," the event page states. "We will walk about three miles total on the Apple Capital Loop trail, out 1.5 miles and back 1.5 miles, meeting and ending at Pybus."

For more information, visit [pybuspublicmarket.org](http://pybuspublicmarket.org).

### Happy Smiles Storytime

The Cashmere Library will host Happy Smiles Storytime on Thursday, June 6 from 10:30-11 a.m.

"A fun, interactive story time at the Cashmere Library

with action songs, fingerplays, rhyming and awesome stories by your favorite librarians," the event page states. "Following story time, we often have a craft or bring out special toys for playtime and for families to socialize."

For more information, visit [ncwlibraries.org](http://ncwlibraries.org).

### Bow making class

The Cashmere Museum and Pioneer Village will host a two-day bow-making class by the Traditional Bowhunters of WA on the weekend of June 8 and 9.

The class is open to children ages 10-16.

"The class allows children to work with bowyers and get the hands-on experience from start to finish making their

own bow," the event page states.

For more information and to register, visit [cashmeremuseum.org](http://cashmeremuseum.org).

### Live Music by Kevin Jones

München Haus will host live music by Kevin Jones on Wednesday, June 12, from 6 to 8 p.m.

"All ages welcome, no cover charge," the event page states. "Kevin is a multi-instrumentalist and will be playing this show with his long-time friend and collaborator Doyle Wood on Mandolin."

For more information, visit [munchenhaus.com](http://munchenhaus.com).

# 5 THINGS TO DO THIS WEEK



### Cashmere Summer Library Program Kick-Off

The Cashmere Library will host its Summer Library Program Kick-Off on Thursday, June 13, from 12 to 6 p.m.

"Drop into the Cashmere Library to sign up for Summer Library Program 2024: Read,

Renew, Repeat," the event page states.

There will be fun activities, including a community sticker poster, photoshoot, candy guess jar, and more.

For more information, visit [ncwlibraries.org](http://ncwlibraries.org).

**WENATCHEE RIVER BLUEGRASS FESTIVAL**  
 JUNE 14-16, 2024 @ CHELAN COUNTY EXPO CENTER  
 FEATURING AWARD WINNING BLUEGRASS BANDS  
 WEEKEND FUN FOR ALL AGES \* CHILDREN 12 AND UNDER FREE  
 EVENTS AND SHOWTIMES AVAILABLE ON WEB [www.WenatcheeRiverBluegrassFestival.com](http://www.WenatcheeRiverBluegrassFestival.com) \* ORGANIZED BY CASHMERE COMMUNITY CONCERTS

## Omnichannel marketing: The key to reaching customers everywhere

Nowadays, customers jump between devices like phones, tablets, and computers and different platforms like websites, apps, print, and in-person stores. They interact with businesses in lots of different ways. This constant switching by customers demands that businesses market themselves consistently no matter where or how the customer engages with them. Whether online, on mobile, in print, on air, or in a physical store, the business needs to provide a unified experience. In the marketing world, this is called an omnichannel approach.

While providing that unified experience across channels has clear benefits, such as increased customer satisfaction, improved brand loyalty, and valuable insights into customer preferences and behavior for small to medium-sized businesses without extensive marketing resources, implementing a consistent marketing strategy across all channels can seem challenging.

At the core of an omnichannel approach lies a deep understanding of the customer journey. Understanding how customers interact with your business enables you

to identify the different ways customers engage with your brand, pinpointing frustrations or challenges customers face, preferred channels, and opportunities for engagement. This insight allows for the improvement of marketing efforts across different channels.

Integrating channels is crucial for delivering a seamless experience. Key components include consistent branding, such as using the same logos and colors, tailoring your marketing message based on what you know about your customer, and technologies that enable smooth transitions



By AMY YALEY  
COO of Ward Media

between online and offline interactions. Coordinating promotions and campaigns across channels further reinforce a cohesive brand experience.

While large corporations may have dedicated teams to manage omnichannel marketing, small to medium-sized businesses often lack the resources to handle such complex strategies. This is where partnering with a reputable marketing agency can be invaluable.

A skilled marketing partner can help you understand how customers interact with your business, identify the most effective channels for your target audience, and develop a consistent marketing plan tailored to your business goals and budget. With their expertise, you can use effective tools and proven strategies to maintain a consistent brand experience without overspending.

Moreover, a marketing partner can provide ongoing support, monitoring, and improve your omnichannel campaigns based on customer feedback and data insights. This ensures that your marketing efforts remain

relevant and effective, adapting to the ever-changing landscape of consumer behavior.

Embracing an omnichannel approach is no longer a luxury; it's a necessity for businesses of all sizes to meet the evolving expectations of modern customers. By partnering with a reputable marketing agency, small to medium-sized businesses can leverage the power of omnichannel marketing without the need for a large in-house team or exorbitant budgets.

Take the first step towards providing a seamless and memorable customer experience by exploring a consistent marketing strategy tailored to your business needs across all channels. Your customers are engaging with your brand in a variety of ways; it's time to meet them where they are, consistently and in a coordinated way, to foster lasting relationships and drive growth for your business.

Amy Yaley is the COO of Ward Media and the co-owner of Apple Capital Marketing & Northwest Swag Works. She can be reached at [amy@ward.media](mailto:amy@ward.media).

## NCW Tech Alliance announces Summer of Innovation events

NCW News  
Ward Media

WENATCHEE — The NCW Tech Alliance has announced a series of Summer Tech Events aimed at fostering innovation and community engagement in North Central Washington. Since 1999, the organization has been connecting people with technology while supporting entrepreneurs, STEM education, and technology adoption in the region.

The summer lineup begins with the Summer Scholarship Fundraiser - Golf Tournament,

presented by Sabey Data Centers, on Thursday, August 1, at the Highlander Golf Course. The event combines friendly competition and fundraising to support STEM scholarships for local students and educators, which will be awarded at the Annual Innovator Awards Luncheon in the fall of 2024.

In collaboration with the North Central Educational Service District (NCESD) and the Apple STEM Network, NCW Tech Alliance will host the fourth annual AI Expo on Wednesday, August 21. The

expo will feature keynotes and breakout sessions on topics such as AI use policies, economic impacts, prompt engineering, multimedia creation, entrepreneurship, open-source utilization, and data analysis.

From August 22 to 25, the NCW Tech & STEM Showcase, presented by the Apple STEM Network, Microsoft, and Yahoo, will take place at the NCW Fair in Waterville. The showcase will provide hands-on opportunities for students,

See TECH ALLIANCE Page A3

**FATHER'S DAY JUNE 16**

**JetPro auto wash**

**GET \$10 EXTRA WHEN YOU BUY A \$50 GIFT CARD**

**COMING SOON !!**

**FREE VACUUMS**

**1660 N WENATCHEE AVE**

# Chelan County Sheriff's Report



This report is compiled from records provided by the Chelan County Sheriff's Office and RiverCom. The publisher cannot certify the complete accuracy of the information provided.

- May 24**
  - 10:14:17 Domestic Distur, 208 Chapel St
  - 10:35:04 Assist Public, 229 Cottage Ave; Village I
  - 11:00:49 Trespass, 200blk Riverfront Dr
  - 11:18:34 Hazard, Brender Canyon Rd & Libby
  - 16:34:16 Civil, 6045 Sunset Hwy
  - 23:35:02 Suspicious, 226 Cottage Ave
- May 25**
  - 7:48:50 Trespass, 209 Riverfront Dr
  - 11:35:44 Theft, 6303 Pioneer Dr
  - 12:05:07 Welfare Check, 305 Woodring St
  - 16:13:38 Welfare Check, 100blk Cottage Ave
  - 16:22:21 Noise, 4800 Old Monitor Rd, Monitor
  - 20:51:57 Assist Public, 917 Pioneer Ave# B314
  - 23:22:29 Traffic Offense, Cottage Ave & Vine St
- May 27**
  - 1:54:00 Assist Agency, 301 Angier Ave# B
- 21:02:15 Welfare Check, 8186 Jude Canyon Rd, Dryden
- 21:21:56 Noise, 5240 N Cashmere Rd
- 19:54:12 Suspicious, 115 E Pleasant Ave# 3

### May 29

- 0:40:48 Harass/Threat, 3510 Fairview Canyon Rd
- 1:21:44 Juvenile Proble, 5599 Airport Rd
- 11:37:43 Domestic Distur, 115 E Pleasant Ave# 12
- 21:14:18 Welfare Check, 104 Cedar St
- 23:39:17 Assist Public, Aplets Roundabout

### May 30

- 12:14:44 Juvenile Proble, 5599 Airport Rd
- 8:36:16 Parking/Abandon, 100blk Elberta Ave
- 12:18:17 Fraud/Forgery, Cashmere
- 12:55:42 Extra Patrol, 4200blk Mission Creek Rd
- 19:56:30 Harass/Threat, Mission Creek Rd & Binder
- 20:40:41 Suspicious, 207 Riverside Dr

## Community Calendar

### Wednesday

- Cashmere Rotary Club**, meets at Cashmere Presbyterian Church hall, noon. President Mark Shorb, 509-885-0676.
- Mission Creek Community Club**, meets every month, 7 p.m. (1st and 3rd Wed.).
- Cashmere Food Bank**, open 2nd and 4th Wednesday from 3-4 p.m. Cashmere Food Distribution Center, 316 River St., for more information, call Pam, 509-245-6464
- Ukulele Circle**, Join the Ukulele Circle, 5:30 - 6:30 p.m. every Wednesday, at the Peshastin Library. Please come 15 minutes early to tune and get the sheet music.

### Thursday

- Caregiver Support Group**, 2-3:30 p.m. For Caregivers of those with Memory Loss. The Henry Building, 120 Cottage Ave. Contact Carmen Gamble, 509-393-0789. (1st & 3rd Thurs.)
- Cashmere Sportsman Assoc., (Cashmere Gun Club)**, open to the public for trapshooting 7-10 p.m. Private rentals by appointment. Call Brian James, 509-782-3099.
- Cashmere American Legion Post #64**, 7 p.m., American Legion Hall, 401 Sunset Highway. Commander Ken Komro, 509-782-4973. (1st Thurs. of every month, August - June).
- Cashmere American Legion Auxiliary #64**, 7 p.m., American Legion Hall, 401 Sunset Highway. President Linda Ingraham, 509-679-0243. (1st Thurs. of every month, August - June).

### Sunday

**CHURCH:** See the church page for local service times & events.

### Monday

- Cashmere Wacoka Kiwanis Club**, 6:30 p.m., American Legion Hall, lower level. 6:30 p.m. Call Pam Leighton, 509-669-3159. (4th Mon.)
- Tillicum Riders**, 7 p.m. Chelan County Fairgrounds. Call Cindy, 509-662-5984. (1st Mon.)
- Cashmere City Council**, 6 p.m., City Hall (2nd & 4th Mon. of each month (unless a holiday, then Tues.).
- Planning Committee Meeting**, 5 p.m. at City Hall (1st Mon. of each month unless a holiday, then Tues.).
- Cashmere Fire Department**, Business management, 7 p.m., above City Hall. Call Chief Cy, 509-782-3513. (3rd Mon.)
- Cashmere Fire Department**, meeting, 8 p.m., above City Hall. Call Chief Cy, 509-782-3513. (3rd Mon.)
- Cashmere School Board Work Session**, Board work sessions are typically held towards the beginning of the month at 6:30 a.m. with no action taken. For updated info. Visit [www.cashmere.wednet.edu](http://www.cashmere.wednet.edu)
- Cashmere School Regular Board Meetings**, are typically held towards the end of the month at 7 p.m. with action taken. The schedule for meetings is subject to change to accommodate conflicts in schedule or special circumstances. Visit [www.cashmere.wednet.edu](http://www.cashmere.wednet.edu) for the most up to date info.
- Chelan Douglas Republican Women**, Monthly meeting and luncheon 1st Monday of the month (unless it's a holiday). \$21. for lunch, \$8. for sitting only. 11 a.m. check in starts, noon for meeting and speaker. Wenatchee Convention Center 121 N. Wenatchee Ave. For information and reservations, please call, Angela Dye, President, 509-668-1105 (1st Mon.)

### Tuesday

- Icicle & Peshastin Irrigation Districts**, Current meeting time 8 a.m. at 5594 Wescott Drive. Call Levi Jantzer, cell 509-607-0278, 509-782-2561, or [levi.ipid@nwi.net](mailto:levi.ipid@nwi.net) (2nd Tues.)
- Peshastin Water District**, meets at 4:30 p.m. Contact: Steve Keene for meeting location. 509-548-5266. (2nd Tues.)
- Cashmere Chamber of Commerce**, Noon, everyone is invited to attend as a guest. Call Executive Director, for meeting location. 509-782-7404. (3rd Tues.)
- The Chelan County Cemetery District #2**, (Peshastin) meets at 6 p.m., at the Memorial Hall, located at 10204 Main Street. (2nd Tues.)

### NCW Libraries

- Cashmere Public Library: 509-782-3314**
- You can order your books online at [ncwlibraries.org](http://ncwlibraries.org) or call 1-800-426-READ (7323).
- Mon., Tues., Thurs., and Fri., 9-6, Wed. 1-6 and Sat., 10-2.
- Closed Sun. 300 Woodring Street. Call 782-3314, or online at [cashmere@ncwlibraries.org](http://cashmere@ncwlibraries.org)
- Cashmere Museum and Pioneer Village**
- Call for more information 509-782-3230
- Chelan County Historical Society Board meets**, 7 p.m., Cashmere Museum, 600 Cottlets Way. Call Nicky 509-782-3230. (3rd Thurs.)
- Note: Some meetings or events may be rescheduled due to holidays or other closures. Please call and check with that organization listed.**

# Chelan Douglas Regional Port Authority receives 2024 Job Creator Award

NCW News  
Ward Media

WENATCHEE - The Chelan Douglas Regional Port Authority (CDRPA) has been honored with the 2024 Outstanding Job Creator Award by the Washington Public Ports Association (WPPA) for its role in attracting Microsoft data center projects to Chelan and Douglas counties.

The CDRPA's efforts have resulted in Microsoft investing approximately \$2.4 billion in each county, marking the largest single private investments in the history of both counties. The data center projects are expected to generate substantial revenue that will be reinvested in local communities, promoting sustainable economic development and ensuring job availability for years to come.

Each data center will create around 75 jobs per building, with six buildings planned for each county site. The projects have also had a significant impact on the local economy, with investments in infrastructure such as the Malaga waterline, which will support further residential and commercial development in the area.

"Data centers will provide family-wage jobs without overloading the community with new residents," said Commissioner Mark Spurgeon. The CDRPA collaborated extensively with local government partners to

attract and support these projects. The Port made substantial contributions and investments throughout the process, including strategic land acquisitions and the construction of essential infrastructure.

"In addition to the jobs being created, Microsoft has funded millions of dollars in upgrading

the Malaga water system that will allow additional growth in the community," said Commissioner Donn Etherington. "None of this would have been possible without the vision, commitment, and hard work of the Port staff, engineers, attorneys, and our community partners."

The CDRPA, the first of its kind in Washington, functions as the principal economic development agency for Chelan and Douglas counties. The Port Authority expressed its gratitude for the WPPA's prestigious recognition of its efforts to enhance the economic vitality of North Central Washington.

## Confluence Health, WVMG announce community partnership grant applications

NCW News  
Ward Media

WENATCHEE — Confluence Health and the Wenatchee Valley Medical Group (WVMG) announced Tuesday that their Community Partnership Fund will begin accepting applications for grants supporting local causes and organizations in North Central Washington.

The fund, managed by the Community Foundation of North Central Washington, aims to award up to \$500,000 annually to groups focusing on health and wellness, education, or arts and culture in Chelan, Douglas, Grant, and Okanogan counties. Grants will range from \$1,000 to \$15,000 per award.

"As an organization with a mission to be local care by and for our community, investing in this special place through these grants is just one of the

ways we can help contribute to all those groups that make this region so great," said Dr. Andrew Jones, CEO of Confluence Health. "We're extremely proud of all the benefits this funding can bring to so many deserving groups."

Eligible applicants include 501(c)(3) non-profit organizations, public agencies, and public schools serving students in the four counties. Private schools, churches, and faith-based organizations are not eligible, even if the grant is intended for non-religious purposes.

The Community Partnership Fund Committee will review submissions to determine awards, with funds being disbursed to selected organizations in October. The application deadline is July 31.

"Our partnership with Confluence Health in this fund helps to make a real impact and it's always exciting each

year to see the many creative and excellent causes and projects that receive funding," said Dr. Jennifer Jorgensen, president of the Wenatchee Valley Medical Group. "We're looking forward to seeing what excellent, community-focused awards are granted this year and encourage everyone who meets the criteria to submit their application."

Grants can be submitted starting June 1, with an application deadline of July 31.

Questions about the application or the process can be directed to Jennifer Short, director of community grants at the Community Foundation, either by email to [jennifer.s@cfncw.org](mailto:jennifer.s@cfncw.org) or by calling (509) 663-7716. More information and the grant application itself can be found on the Community Foundation website at <https://cfncw.org/CommunityPartnershipGrant/>.

## Peshastin bridge closure prompts Link Transit to implement shuttle service

NCW News  
Ward Media

PESHASTIN - The upcoming closure of the Peshastin bridge from June 17 to July 13 is set to disrupt Link Transit's Route 22, which connects Wenatchee and Leavenworth, according to a statement released by the transit authority on Friday.

During the closure, access to Peshastin from State Route 2 will be restricted. To address this issue, Link Transit has announced the implementation of a temporary shuttle service that will operate along North Road, connecting the turnaround in Peshastin to the Willkommen Park-and-Ride, located behind the local

Safeway store. However, the shuttle will not serve the bus stop at the Peshastin Library.

The shuttle service will run seven days a week, with a reduced schedule on Saturdays and Sundays. Passengers can make connections to Wenatchee or Leavenworth at the Willkommen Park-and-Ride, using either Route 22, Route 122, or the Leavenworth DART, which exclusively serves the greater Leavenworth area.

Link Transit has made the shuttle schedule available on their website at [www.linktransit.com/peshastinshuttle](http://www.linktransit.com/peshastinshuttle). For further inquiries or additional information, the transit

authority has directed the public to contact them directly at 509-662-1155.

The bridge closure and subsequent changes to the public transportation schedule are expected to impact commuters and residents who rely on Link Transit's services in the affected areas.



## BUSINESS & SERVICE DIRECTORY

**Quick 'n Easy Residential Stump Removal**

10817 North Road, Leavenworth • (509) 548-8222  
Kim & Rosalie Kozelisky  
Licensed, Bonded, Insured • Cont. #UPPERVE200PI

**It's not just a generator. It's a power move.**

Receive a free 5-year warranty with qualifying purchase\* - valued at \$535.  
Call 888-674-7053 to schedule your free quote!

**GENERAC**

**LeafFilter GUTTER PROTECTION**

CALL TODAY FOR A FREE INSPECTION!  
1-888-360-1582

**20% OFF** + **10% OFF**  
Your Entire Purchase\* Seniors + Military

++ We offer financing that fits your budget!

\* See Representative for full warranty details. \*One coupon per household. No obligation estimate valid for 1 year. †Subject to credit approval. Call for details. AR #0366920922, CA #1035795, CT #HIC-0689995, FL #CBC256678, IA #C177230, ID #RCE-31604, LA #595544, MA #17647, MD #MHIC148329, MI # 210212986, #26200022, #262000403, #2106212946, MN #HR731804, MT #226192, ND #7304, NE #50145-22, NJ #13W409953900, NM #408693, NV #86990, NY #H-19114, IL#52229, OR #218294, PA #PA069383, RI #GC-41354, UT #7656, UT #10783658-5501, WA #2705169445, WA #LEAFFRWS2232, WY #WV05912

ADD YOUR BUSINESS OR SERVICE TO THIS DIRECTORY:  
**509-731-3321**

**Tumwater Drilling and Pump Inc.**

**"Water Treatment Systems Built to Your Individual Problem"**

**Free Water Analysis/Estimates**

Conveniently located on Hwy 2 across from the Big Y Cafe in Dryden @ 9290 Hwy 2

**Tumwater Drilling & Pump, Inc.**  
Cr.Reg.#TUMWADP943RR

509-548-5361  
[www.tumwaterdrilling.com](http://www.tumwaterdrilling.com) • email [info@tumwaterdrilling.com](mailto:info@tumwaterdrilling.com)

WATER SOFTENERS, IRON FILTERS, CONDITIONERS, UV FILTERS, REVERSE OSMOSIS, SULFUR, WHOLE HOUSE FILTERS, PREVENTATIVE MAINTENANCE, SERVICE, SALT SALES

**Complete Excavating Service**

Power & Water Systems  
Dump Truck & Dozer  
Drainfield Repair  
Free Estimates  
Septic Systems  
Road Grading

**Upper Valley EXCAVATING**

(509) 548-3489  
Leavenworth, WA  
Licensed - Bonded - Insured

# Wenatchee Valley Museum & Cultural Center to expand and renovate



Exterior view of the expanded Wenatchee Valley Museum & Cultural Center, illustrating how the renovation project will transform the museum's presence in downtown Wenatchee. The rendering showcases the museum's updated facade, enhanced landscaping, and inviting outdoor spaces, demonstrating the institution's commitment to creating a welcoming and accessible community hub that celebrates the region's history and culture.

NCW News  
Ward Media

WENATCHEE - The Wenatchee Valley Museum & Cultural Center announced plans to expand and renovate its historic buildings to create a more inclusive, engaging, and accessible space for visitors. The project aims to enhance the museum's ability to share the stories and heritage of North Central Washington. The Museum's Board of Directors initiated a Strategic Planning Process in 2019, engaging over 600 museum members, community members, and museum partners to develop outcome-driven goals and metrics to serve its mission over the next

five years, with a particular focus on expanding its impact and engaging the community. As part of this plan, the Museum is reimagining its spaces to improve the visitor experience, making it more inclusive, welcoming, equitable, and accessible while also enhancing downtown Wenatchee. Numerous community engagement processes have been conducted to gather input and ideas for this transformation. "Our community deserves a thriving museum that offers something for everyone, from our youngest visitors to our lifelong patrons," said Marriah Thornock, Executive Director of the Wenatchee Valley Museum & Cultural

Center. "This expansion and renovation project will allow us to create a more dynamic and interactive space that truly reflects the multi-faceted history and culture of North Central Washington." Since the last major capital campaign in 1990, the number of visitors to the museum, the use of gathering spaces, and the reach of regional programming have all significantly increased. Over the last year, the museum has experienced a 34% growth in summer camps, programs, and daily visitors. The museum, currently housed in two historic buildings from 1917 and 1937, faces numerous challenges due to outdated infrastructure and space constraints.

"As our museum has grown, so have the challenges of operating within our historic buildings," said Courtney Tiffany, Director of Operations at the Wenatchee Valley Museum & Cultural Center. "The current space constraints not only limit our ability to showcase new and diverse exhibitions but also create bottlenecks in visitor flow." The Wenatchee Valley Museum and Cultural Center, a 501(c)(3) nonprofit organization, operates with the support of the cities of Wenatchee and East Wenatchee. It is housed in two historic federal-style downtown buildings that served early Wenatchee as the Post Office & Annex.



Interior rendering illustrating how the renovation project of the renovated Wenatchee Valley Museum & Cultural Center showcases a bright, open space with modern architectural elements.

# National Forests offer free admission for Get Outdoors Day

NCW News  
Ward Media

PORTLAND - The USDA Forest Service's Pacific Northwest Region is encouraging the public to enjoy the great outdoors by waiving day-use fees at most recreation sites in national forests across Washington and Oregon on Saturday, June 8. This initiative is part of the celebration of National Get Outdoors Day, which aims

to inspire Americans to lead healthy, active lifestyles by connecting with nature. The fee waiver applies to day-use fees at trailheads, picnic areas, visitor centers, and other recreation sites across the region's 17 national forests and grasslands. However, fees for camping, cabin rentals, and special permits will remain in effect. Sites operated by concessionaires may participate at their own discretion.

This fee-free day is one of several Forest Service offers throughout the year. The remaining fee-free observances for 2024 include Juneteenth, National Public Lands Day, and Veterans Day. The Forest Service emphasizes the importance of spending time outdoors, as it provides an opportunity to connect with nature, exercise, spend quality time with loved ones, and create lasting memories. To find

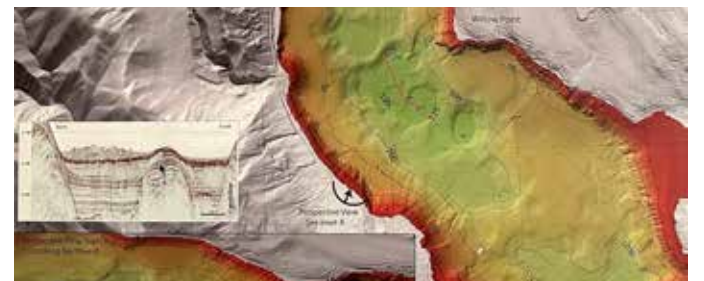
a nearby national forest or grassland to visit on June 8 or any other day, the public can check the Forest Service website at <https://www.fs.usda.gov/r6>. With the waiving of day-use fees, the Forest Service hopes to make it easier for individuals and families to enjoy the beauty and recreational opportunities that national forests have to offer, while also promoting the importance of leading a healthy, active lifestyle.

# Lake Chelan's hidden depths, researchers explore geomorphic wonders

Cashmere Valley Record  
Ward Media

WENATCHEE - The Wenatchee Valley Erratics Chapter of the Ice Age Floods Institute is set to hold a meeting on Tuesday, June 11 at 7:00 p.m., at the Wenatchee Valley Museum and Cultural Center. The meeting will also be accessible via Zoom (<https://us02web.zoom.us/j/84520197937>) for those unable to attend in person. The featured speaker will be Philip Long of the Lake Chelan Research Institute (LCRI), who will deliver a presentation titled "Exploration of Geomorphic Features in Lake Chelan with an Underwater Remotely Operated Vehicle (ROV)." Long will discuss the recent data collection efforts by the U.S. Geological Survey in June 2023, which utilized swath bathymetry, chirp sub-

bottom reflection profiles, and sediment cores to gather information about Lake Chelan. The data collected has provided valuable insights into the late- and post-glacial history of the lake. Additionally, LCRI's ROV dives have enabled researchers to distinguish bedrock from till on lake bottom sediment profiles and directly observe various geomorphic features, such as landslide scarps and debris aprons. Interestingly, some of the features discovered on the bottom of Lake Chelan bear a striking resemblance to surface glacial features found on the Waterville Plateau, including moraines, kames, drumlins, kettles, and underwater landslides. The presentation aims to shed light on the fascinating geological processes occurring beneath the surface of Lake Chelan.



COURTESY OF WENATCHEE VALLEY ERRATICS CHAPTER OF THE ICE AGE FLOODS INSTITUTE

**SPEIDEL BENTSEN** LLP  
ATTORNEYS AT LAW | EST. 1986

**Estate Planning**  
(509) 662-1211

7 North Wenatchee Avenue, Wenatchee  
[www.SpeidelBentsen.com](http://www.SpeidelBentsen.com)

Russell J. Speidel | David J. Bentsen

We provide excellent legal services in estate and tax planning, trust and estate administration, and nursing home planning.

WESTERN RANCH BUILDINGS LLC  
STEEL & POST FRAME BUILDING CONTRACTORS  
NFAA

1976

Your building can be customized just the way you want!

Sold and erected by an independent, locally owned builder

509-884-0555 | 1107 Walla Walla Avenue  
[www.westernbuildings.com](http://www.westernbuildings.com) | Wenatchee, WA 98801

RESIDENTIAL • COMMERCIAL • INDUSTRIAL • AGRICULTURAL

**NEVER WORRY ABOUT POWER OUTAGES AGAIN.**

Gain peace-of-mind with the most powerful line of home standby generators.

Engineered with **NGMax™** for superior power and performance

When choosing a standby generator, check the specifications closely. Only Briggs & Stratton PowerProtect™ generators feature NGMax™ technology, delivering up to 12% more power on natural gas than the competition. For homes with natural gas, Briggs & Stratton is the ideal choice.

Industry-Leading Comprehensive Warranty for Years of Worry-Free Performance

Standard Warranty of **7 YEARS** \$849 Value

**Call 1-877-597-7536**

BRIGGS & STRATTON ENERGY SOLUTIONS

**Summer starts here!**

**NORTHWEST SWAG WORKS**  
APPAREL & PROMOTIONAL PRODUCTS

White glove service so you can focus on your business.

**509-731-3624**

# My Favorite Motion Sickness Remedies 2024

I just returned from visiting my husband's cousin and his wife, Patricia, in Alaska. We stayed with them at their cabin on the Kenai River, between the towns of Soldotna and Kenai. 5 years ago, we were to join them on day cruise viewing Aialik Glacier, the largest tidewater glacier in Kenai Fjords National Park. Lunch was on board the ship, and dinner was at Fox Island on the way back.

Arriving at the boat terminal in Seward at 9am, it was 49 degrees, pouring rain with wind gusts that nearly knocked us over as we crossed the parking lot. Luckily, the captain canceled the cruise due to the weather. Patricia and I wouldn't have enjoyed it because we get seasick.

We are not alone. Acupressure helps ease motion sickness for some people. Wearing an elastic band around your wrist activates a particular pressure point, relieving nausea and discomfort. To give this medication-free approach a

try, look for Sea Bands®.

Ginger is also effective for motion sickness. For best results, take 500mg to 1000mg of powdered root every 4-6 hours. Fresh ginger root, capsules of ground ginger, or small chunks of sweetened, crystallized ginger also work.

My favorite ginger is the crystallized form, which weighs twice as much as powdered ginger. I weighed pieces of crystallized ginger with my little apothecary scale left over from pharmacy school. I got the best results with chunks about the size of a full-strength aspirin tablet. Ginger ale, ginger tea, and gum don't have enough ginger to provide me reliable relief.

Dramamine® for motion sickness is a popular non-prescription remedy but watch out: it has two different formulations, the original one and a "less drowsy" formula.

The original version of Dramamine® contains dimenhydrinate, a close cousin of diphenhydramine or Benadryl®. Both

and diphenhydramine can prevent motion sickness. Unfortunately, they also cause drowsiness and need to be taken every 4-6 hours.

The last time I took Dramamine® was on a flight home from Orlando to Seattle. After crossing 3 time zones going westbound, I lost track of time, and it wore off right when I needed it!

Meclizine is my go-to motion sickness remedy. I never leave home without it, and take it every day while traveling. It's inexpensive, available as chewable flavored tablets, and rarely causes drowsiness. Best of all, one dose lasts 24 hours! Meclizine is available as Bonine®, Dramamine® Less Drowsy Formula, and generic meclizine tablets.

For more relief, try adding ginger or acupressure to meclizine. Avoid adding dimenhydrinate (the original Dramamine®) to meclizine or Benadryl® (diphenhydramine). Their combination can cause

drowsiness, dry mouth, and constipation.

If taking meclizine or dimenhydrinate with ginger doesn't help your motion sickness, ask your doctor about a prescription for scopolamine patches.

Scopolamine is a patch (Transderm-Scop®) you wear behind your ear, lasting 2-3 days. Scopolamine patches are more potent at relieving motion sickness than non-prescription medicines, but they also cause more side effects.

Scopolamine can cause fatigue, blurred vision, dry mouth, constipation, and urinary retention. Talk to your medical provider about whether scopolamine would be a safe choice for you, especially if you have constipation.

## Here are 5 Tips for Mastering Motion Sickness:

**1. Be prepared.** Motion sickness medicine

takes time to work and is most effective when taken before your trip. You should take or apply motion-sickness remedies at least 30 minutes before experiencing the motion of a boat, car, or plane.

If you take a short-acting nausea medicine like ginger or dimenhydrinate (Dramamine® Original Formula), remember to bring another dose with you. If your outing is delayed, you'll be able to take another dose before the first one wears off.

**2. Face forward.** If possible, sit facing forward on cars, trains, boats, and roller coasters.

**3. Keep cool.** Seek out areas where you can get fresh air or a cool breeze on your face. Getting too warm always makes my motion sickness worse, so I wear layers to avoid getting overheated.

**4. Choose meclizine over dimenhydrinate.**

There are two formulas of Dramamine®: Original Formula and Less Drowsy



Formula. They sit side by side on the pharmacy shelf, and it's easy to confuse one with the other.

I recommend meclizine, the generic version of Bonine® and Dramamine® Less Drowsy Formula. Meclizine is just as effective and costs less than the brand-name products.

**5. Meclizine works for dogs, too.**

For most dogs, the dose of meclizine is 25mg once daily. If your dog is smaller than 25 pounds or already takes medication, check with your veterinarian first.

*Dr. Louise Achey, Doctor of Pharmacy, is a 44-year veteran of pharmacology and author of Why Dogs Can't Eat Chocolate: How Medicines Work and How YOU Can Take Them Safely. Get clear answers to your medication questions at her website and blog, TheMedicationInsider.com. ©2024 Louise Achey*

**Use no more than half the trail when you're in a group.**

**Please keep pets on 6' or shorter leashes.**

**Give people a heads-up when you're passing - a bell ring or "on your left"**

**10 MPH**

**Thank you for keeping our parks safe and enjoyable -- for everyone!**

**CHELAN PUD PARKS: here for everyone!**

**Check out our new video series:**  
[chelanpud.org/parks-and-recreation/our-parks](http://chelanpud.org/parks-and-recreation/our-parks)

## APPLESOX SINGLE GAME TICKETS ARE NOW ON SALE

PURCHASE SINGLE GAME TICKETS THROUGH [WWW.APPLESOX.COM/SCHEDULE](http://WWW.APPLESOX.COM/SCHEDULE) OR THE OFFICIAL APPLESOX TICKETING PROVIDER [WW.SAFERSEATING.COM/HOME](http://WW.SAFERSEATING.COM/HOME)

### 2024 APPLESOX HOME SCHEDULE

	SUN	MON	TUE	WED	THUR	FRI												
<b>JUNE</b>	SAT WWW.APPLESOX.COM	2 PAL 5:35	3 RED 6:35	4 PAL 6:35	5 PAL 6:35	6 PAL 6:35	7 VIC 6:35	8 VIC 6:35										
	9 VIC 1:05	10	11 BEL 6:35	12 BEL 6:35	13 BEL 6:35	14 KAM 6:35	15 KAM 6:35											
	16 KAM 2:05	17 DSF 6:35	18 YVP 6:35	19 YVP 6:35	20 YVP 6:35	21 WWS 6:35	22 WWS 6:35											
	23 WWS 5:35	24 KEL 6:35	25 KEL 6:35	26 KEL 6:35	27	28 BEL 6:35	29 BEL 6:35											
	30 BEL 1:35	<b>FIREWORKS - JULY 3RD</b>																
<b>JULY</b>	SAT	1 NAN 1:05	2 VIC 6:35	3 VIC 7:05	4 VIC 6:35	5 NAN 6:35	6 NAN 6:35											
	7 CCL 5:35	8	9 EDM 6:35	10 EDM 6:35	11 EDM 6:35	12	13 CCL 6:35											
	14 CCL 5:35	15	16	17 WCL ALL-STAR	18	19 YVP 6:35	20 YVP 6:35											
	21 YVP 5:35	22	23 KAM 6:35	24 KAM 6:35	25 KAM 6:35	26 EDM 6:05	27 EDM 6:05											
	28 EDM 12:05	29 KEL 6:35	30 KEL 6:35	31 KEL 6:35														
<b>AUGUST</b>	SUN SAT	1	2 NAN 6:35	3 NAN 6:35	4 NAN 5:35	5	6 BEN 6:35	7 BEN 6:35	8 BEN 6:35	9	10 WCL PLAYOFFS	11 WCL PLAYOFFS	12 WCL PLAYOFFS	13	14 WCL PLAYOFFS	15	16 WCL PLAYOFFS	17

**NON-LEAGUE**  
 CCL: Cascade Collegiate League Showcase  
 DUB: Dub Sea Fish Sticks  
 RED: Redmond Dudes

**SOUTH DIVISION**  
 BEN: Bend Elks  
 COR: Corvallis Knights  
 COW: Cowlitz Black Bears  
 POR: Portland Pickles  
 RID: Ridgefield Raptors  
 SPR: Springfield Drifters  
 WWS: Walla Walla Sweets  
 YVP: Yakima Valley Pippins

**NORTH DIVISION**  
 BEL: Bellingham Bells  
 EDM: Edmond RiverHawks  
 KAM: Kamloops NorthPaws  
 KEL: Kelowna Falcons  
 NAN: Nanaimo NightOwls  
 PAL: Port Angeles Lefties  
 VIC: Victoria HarbourCats

**\$2 OFF TUESDAYS | WIN ATCHEE WEDNESDAYS | THIRSTY THURSDAYS**

**HOME GAME AWAY GAME PLAYOFFS**

**509-665-6900**

**Chelan County**

*Continued from page A 1*

assessment on their home in the past may indicate which practice they would like to implement. For those who are just starting out, Cascadia CD will provide, or coordinate with local fire district staff, a free risk assessment and recommendations on which practice will be most beneficial.

After getting selected to implement a practice, homeowners can either complete the work themselves, hire a contractor, or a combination of both. In order to receive the rebate, the work will have to be done in a manner that meets the expectations of Cascadia CD's "Practice Specifications." Participants will need to provide before and after photos, as well as receipts,

after project completion. After photo submission or inspection, Cascadia CD sends a check within 30 days.

Although Cascadia CD offers other wildfire risk reduction programs such as the Fuel Break and Forest Resilience Partnership, the Home Hardening Rebate Program is its first program to specifically target the structure itself.

"Historically, we'd go out and do these site visits and focus on the house, talk about the importance of the house, and then just say, "We can only cover forestry practices, fuels reduction practices, like out past 30 feet of the house," or something like that. So, actually being able to tell people some of the things that they could fix, and then also being able to have a program to provide

that assistance is pretty awesome," said Cascadia CD Forest and Community Resilience Specialist Joe Hill.

More information about Cascadia CD's programs can be found at CascadiaCD.org. Questions about the Home Hardening Rebate Program can be directed to isobelw@cascadiacd.org or joe@cascadiacd.org.

"I would encourage people, especially if they're interested, but they don't know which practice or what they even would do, I definitely encourage them to reach out. Even if they're not interested in getting an incentive payment or even doing any home hardening practices, reach out and get a risk assessment," said Woolner.

Taylor Caldwell: 509-433-7276 or taylor@ward.media

**Teens**

*Continued from page A 1*

contest after judging it last year as a member of the Teen Library Council. Reading the entries motivated her to write her own story this year, but Hodges has been writing for years now.

"Around the third grade, I had an elementary school teacher who kind of introduced me to good books," she said. "And then we had a contest in the fourth grade that I ended up winning, and so that kind of sparked some passion for it, and I've been writing pretty consistently for the past like five years now."

"I usually am just inspired to write by other books that I read like the "Stag" story in particular it was based on some of my thoughts

after reading "The Song of Achilles" by Madeline Miller," she said.

When Hodges is not reading and writing, she enjoys playing soccer. She is also president of her school's Technology Student Association club and enjoys filmmaking.

Hodges is interested in writing and screenwriting as well.

"I've always kind of thought about what I want to do after high school with writing and I can't really imagine, like, a career for myself that doesn't involve it," she said.

The contest was open to students in grades 9-12, including those privately or homeschooled and in Running Start, in the NCW Libraries' service area. The submitting writers attend schools throughout Chelan, Douglas,

Okanogan, Grant, and Ferry counties.

Learn more about the winners and read their winning submissions at writeontheriver.org.

After visiting Wenatchee as a Write on the River Conference keynote speaker in 2011, New York Times best-selling author Chelsea Cain initiated and continues to sponsor the annual competition.

NCW Libraries' mission is to connect the people of NCW to vital resources and opportunities that foster individual growth and strengthen communities. Write on the River's mission is to foster the writing arts and sustain a vital NCW writing community.

Quinn Propst: 509-731-3590 or quinn@ward.media.



The band Seth Mulder and Midnight Run will play at the Wenatchee River Bluegrass Festival



Taylor's Camp teaches kids how to play bluegrass. The camp is a workshop offered during the Wenatchee River Bluegrass Festival.

**Bluegrass**

*Continued from page A 1*

Junction, and they're more of a traditional hard-driving bluegrass band," she said. "So you're gonna get some great entertainment out of them."

"Appalachian Roadshow, my all-time favorite, just for their stage presence," she said. "Their representation of Appalachian music, we're talking traditional bluegrass that just grabs your heart, it is so sincere.

"Each one of those performers are talent, from they're Grammy Award winners, they are IBMA award winners. IBMA is the International Bluegrass Music Association," she said. "So

we're talking tons of talent on this stage at one time, and they're just so sincere.

"We had them back in 2022, and the crowd loved them and we're so honored to have them return," she said. "They loved our crowds. They love the Northwest. So they were excited when we asked them back."

The campground opens on Monday, June 10, at noon. The festival will kick off with a jam session on Thursday, June 13, at 2:15 on the Back Porch Stage, followed by a Meet and Greet Luau and Potluck at 5 p.m. at the campground picnic shelter.

Friday, June 14, Saturday, June 15 and Sunday the 16th each have a full schedule of performances.

There will be food vendors, kettle corn, roasted nuts, and

merchandise. The event is alcohol-free.

Tickets are \$45 for the weekend or \$35 for the day. For more information and to purchase tickets, visit WenatcheeRiverBluegrassFestival.com.

"I encourage people, even if they're local, to come and camp; it is music," she said. "About 90% of those people out there are musicians, so their wristbands will get them into the campground, and they can see extra entertainment out there and people will start rolling in on Monday. Things get to hopin' pretty good through evening Wednesday. And then from there, it's just an amazing wave of music you can hear. It's perfect.

She said that throughout

the campground, groups will camp next to each other, form a common circle, and gather to play music.

"Come nighttime, it's magic," she said. "You walk through there, and there is so much music coming from everybody's camps. It is amazing, really."

On Saturday there will be Taylor's Camp, which is a workshop for youth to learn to play bluegrass music. At the end of the workshop, the

children will perform on stage.

There are also instrument workshops for adults to learn more about playing traditional bluegrass instruments.

The festival started in 2003 and has continued to grow.

"We started with as far as our bands go, we were excited to get some Washington bands," Vecchio said. "That was a big highlight for us. And every year, we keep getting a little bit bigger and a little bit

bigger, and we have gotten to the status of where we're able to hire award-winning bands from back east or wherever. And it's very exciting that we got to this point."

"We offer good family fun, decent price, and that's what kept us going is just everybody believing in what we do," she said.

Quinn Propst: 509-731-3590 or quinn@ward.media.

**Upper Valley Church Guide**  
To Place Information In The Church Guide Call 509-548-5286

<p><b>Cashmere</b></p> <p><b>CASHMERE PRESBYTERIAN CHURCH</b> 303 Maple Street • 509-782-2431 Sunday Morning Worship 10:30 a.m. Call for activities: Pastor Charles Clarke • www.cashmepres.org</p> <p><b>CHRIST CENTER</b> Sunday Worship Service at 10 am Lead Pastor Steve Haney • 5800 Kimber Rd., Cashmere • 509-295-8006 christcentercashmere.com</p> <p><b>ST. JAMES EPISCOPAL CHURCH</b> • 509-860-0736 • 222 Cottage Ave., 9 am Formation of Faith, 10 am Worship. Combined service with Grace Lutheran Church. Pastor Rob Gohl</p>	<p><b>Leavenworth</b></p> <p><b>CASCADE MOUNTAIN BIBLE CHURCH</b> Office: 509-548-4331 11025 Chumstick Hwy. Please join us Sunday mornings 9 a.m., Sunday School, 10:30 a.m., Worship Service</p> <p><b>LEAVENWORTH COMMUNITY UNITED METHODIST CHURCH</b> 418 Evans Street • 509-548-5619 10 a.m. Sunday Service, Pastor Jo Dene Romeijn-Stout Leavenworthumc.org leavenworthumc@outlook.com</p> <p><b>FAITH LUTHERAN CHURCH - ELCA</b> "Reconciling in Christ Congregation" 224 Benton Street • 509-548-7010 Worship 9:30 a.m. w/coffee following Eva Jensen, Pastor https://www.flcleavenworth.com</p> <p><b>FIRST BAPTIST CHURCH OF LEAVENWORTH, SBC</b> 429 Evans Street, 509-470-7745 Sunday Worship: 11 a.m. www.leavenworthbaptist.com Email: info@leavenworthbaptist.com</p> <p><b>LEAVENWORTH CHURCH OF THE NAZARENE</b> 111 Ski Hill Drive • 509-548-5292 Sunday Worship 9 a.m. Lead Pastor: Greg Appleby Youth Pastor Paige Derossett Worship Pastor-Jacob Mitchell www.LCN.org</p> <p><b>SEVENTH DAY ADVENTIST CHURCH</b> 10600 Ski Hill Drive • 509-548-4345 Saturday Services • Bible Study 9:30 a.m. • Worship 11 a.m. 509-860-3997</p> <p><b>SPIRIT LIFE CENTER</b> 210 Benton Street • 509-548-7138 Sunday Worship 10 a.m., Prayer 6 p.m. • Wednesday Bible Study 6:30 p.m. • Pastor Russell Esparza</p>
<p><b>Dryden</b></p> <p><b>DRYDEN COMMUNITY CHURCH</b> Hwy 2 at Dryden Ave. • 509-782-2935 Sunday Worship at 11 am. • Prayer Meeting Wed. at 6 pm. Pastor Bill Clem</p> <p><b>MID-VALLEY BAPTIST CHURCH</b> 8345 Stine Hill Rd. • 509-782-2616 Worship Service, 10 a.m., • Sunday School, 9 a.m. • Pastor Mike Moore www.midvalleybaptist.org</p>	<p><b>Plain</b></p> <p><b>PLAIN COMMUNITY CHURCH</b> Serving Our Valley Since 1941 12565 Chapel Dr. 509-763-3621 Looking for you at 10:30 this Sunday! plaincommunitychurch.org facebook.com/plaincommunitychurch office@plaincommunitychurch.org</p>
<p><b>Peshastin</b></p> <p><b>LIGHT IN THE VALLEY COMMUNITY CHURCH</b> 8455 Main Street • Sunday Worship 10 a.m. • Pastor John Romine www.lightinthevalley.org</p> <p><b>NEW LIFE FOURSQUARE CHURCH</b> 7591 Hwy. 97 • 509-548-4222 Sunday Worship, 10 a.m. Pastors, Darryl and Mindy Wall newlifeleavenworth@gmail.com FB page: newlifeleavenworth www.newlifeleavenworth.com</p>	

**John Aldrich**  
Owner  
Cell: 509-679-8685

**Hot Tubs Liquidators**

SERVING CHELAN & WENATCHEE

STOP READ THIS BEFORE YOUR BUY A SPA OR HOT TUB!

HOT TUBS LIQUIDATORS IS DIFFERENT

- Deal Directly With OWNERS
- Low Cost Warehouse / Beautiful Showroom
- No Pressure
- Owner Operated - Over 40 Years Experience
- No Sales People or Commission
- Minimum Advertising - Mostly Referrals
- High Volume
- Large Inventory - No Waiting
- Factory Direct
- K.I.S.S. Philosophy! (Keep It Simple Stupid)
- Limited Hours - Private Showings ANYTIME

NEW - REFURBISHED - USED

SPAS STARTING AT \$4995

- Guaranteed Lowest Price Anywhere/Anytime
- Best Service
- Highest Quality Spas & Hot Tubs

- Marquis Spas #1

**MARQUIS**  
*The ULTIMATE Hot Tub Experience!*

105. S. Bradley Street • Chelan • https://hot-tubsliquidators.com



# Kid Scoop

THE AWARD-WINNING PRINT & ONLINE FAMILY FEATURE

Puzzle answers, recipes, videos and more at [www.kidscoop.com](http://www.kidscoop.com)

© 2024 by Vicki Whiting, Editor Jeff Schinkel, Graphics Vol. 40, No. 28

Kid Scoop Together

## FAMILY MAZE

Race against a family member to see who can get to the newspaper first!

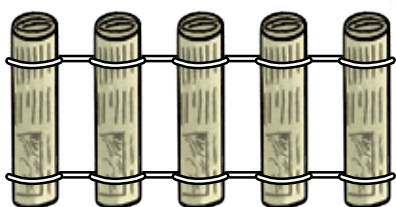


## Summer Fun With the Newspaper!

What is black and white and FUN all over? **The newspaper!** Summer fun begins with your local newspaper! It can be used to play games, to say "Happy Father's Day" and even to take a nap.

### Make a Newspaper Hammock!

- Starting at the narrow end, tightly roll about 50 pages of newspaper into a rigid tube. Tape it so that it stays rolled. Make about 10–15 of these tubes.
- Connect the tubes, using extra-strength clothesline. When the hammock is as long as your body, bring the rope ends together to form loops for hanging.



- Hang the hammock indoors or outdoors. Tie the two ends to sturdy supports at each end. Two trees make good supports.



### First Father's Day

The first Father's Day was celebrated in 1910 in Spokane, WA. It was \_\_\_\_\_ by Sonora Dodd.

Replace the missing words in this story.

### SUNDAY MET CHURCH BROTHERS CARE SPECIAL STARTED

She and her five brothers were raised by their father after their mother died.

After listening to a Mother's Day sermon in \_\_\_\_\_ one Sunday, she thought of her father's love and the many sacrifices he had made to raise her and her \_\_\_\_\_. And of the many ways fathers everywhere took \_\_\_\_\_ of their families.

Her idea of a Father's Day celebration in her community \_\_\_\_\_ with strong support.

Newspapers across the country told the story of the \_\_\_\_\_ day for fathers in Spokane. However, it was not until 1972 that Father's Day was set as a national celebration on the third \_\_\_\_\_ in June.

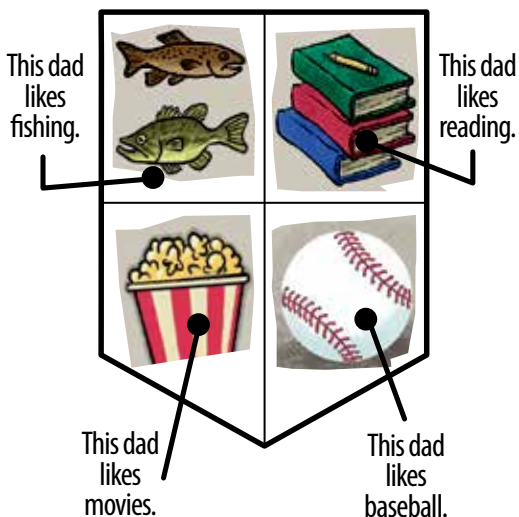
How many years after the first Father's Day was it made into a national celebration?

Standards Link: Animals have structures that aid in survival.



### What Is a Coat of Arms?

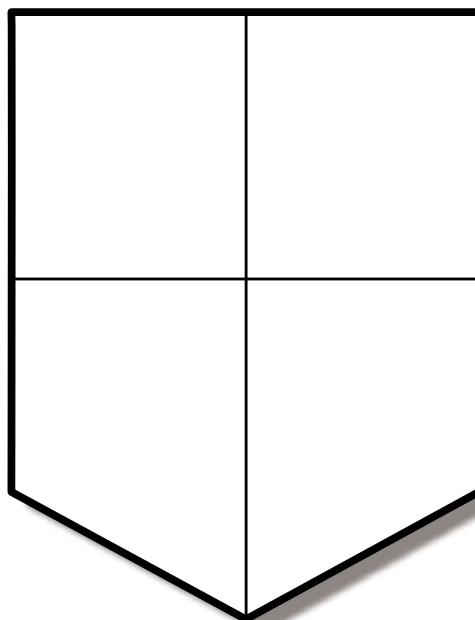
A coat of arms is a crest that uses symbols to describe a family or a person.



### Extra! Extra! Say "Happy Father's Day" with a Newspaper Coat of Arms

- Make a list of words that describe your dad.
- Pick the four you like the best.
- Find pictures in today's paper that represent the words you have chosen.
- Cut out the pictures and arrange them on the blank coat of arms. Decorate with markers or crayons, glitter, stickers, and ribbons.
- Mount the coat of arms on a heavy piece of paper and wrap it as a gift for Father's Day. Use newspaper to wrap the gift!

Standards Link: Follow simple written directions.



### Kid Scoop Puzzler

Dario and his dad went to the donut shop for Father's Day. They wanted donuts that were the same. Circle the two donuts that are exactly the same.



Standards Link: Use main idea and supporting details in writing.

### Double Double Word Search

- BEST
- DAD
- FATHERS
- FORM
- GAMES
- GIFT
- JUNE
- LOVE
- NAP
- PAPER
- ROPE
- SPOKANE
- SUNDAY
- TAPE
- THOUGHT

Find the words in the puzzle. How many of them can you find on this page?



Standards Link: Letter sequencing. Recognize identical words. Skim and scan reading. Recall spelling patterns.

### FREE Kid Scoop Teacher Activity Pack!



With hundreds of topics, every **Kid Scoop** printable activity pack features six-to-seven pages of high-interest extra learning activities for home and school! Get your free sample today at:

[kidscoop.com/activity-pages/](http://kidscoop.com/activity-pages/)

### Kid Scoop VOCABULARY BUILDERS

This week's word: **SACRIFICE**

The noun **sacrifice** means the act of giving up something to show love and affection.

Her father made many **sacrifices** to raise his children.

Try to use the word **sacrifice** in a sentence today when talking with your friends and family members.

MEDIA PARTNER

## EXPLORE THE WORLD WITH YOUR LOCAL LIBRARY.

NCWLIBRARIES.ORG

**AT YOUR LIBRARY**

- Storytimes
- After school events & activities
- Check out books, comics, movies, & more

**Free homework help**

- Britannica Library
- Stream books, comics, movies, & more