

CASHMERE VALLEY RECORD

CELEBRATING 113 YEARS • 1907-2020



See Martin's Market Fresh IGA Grocery ad —page B4

SEPTEMBER 23, 2020 • VOLUME 113, No. 39
SINGLE COPY \$1.00

Crunch Pak® Enters The Meal Replacement Category With Lunch Kitz™

First product features Woody from Disney and Pixar's Toy Story on pack

CASHMERE, Wash. (Sept. 17, 2020) — Crunch Pak®, the sliced apples specialist, is entering the meal replacement category with new Lunch Kitz™.

Lunch Kitz is a 4-ounce snack tray that contains fresh sliced apples, a slow baked artisan cracker, string cheese and Italian salami.

The first Lunch Kitz features the character Woody from Disney and Pixar's Toy Story movie on pack.

"We do consumer research as part of our product development process and we found that moms

are turning to trusted brands during the Covid pandemic," said Ozgur Koc, senior vice president of new business and product development. "We use shopper data, matched with supply chain information to create new products that meet shopper preferences."

One piece of information the company collected during the product development phase was concern from moms about the sodium content in snack foods. As a result, Crunch Pak worked with its salami supplier to source product without nitrate, nitrites or any artificial ingredients.

All of the Lunch Kitz ingredients meet Disney's strict nutritional



guidelines, and the package is considered an excellent source of vitamin C, while still delivering kid and family-friendly tastes.

Lunch Kitz will launch in October in more than 3,000 stores nationwide, the suggested retail price is \$2.99 to

\$3.49 depending on the market. For more information visit www.crunchpak.com.

About Crunch Pak® Crunch Pak® is the industry leader in fresh sliced apples. Founded in 2000, Crunch Pak® is committed to providing the highest quality organic and conventional sliced apples in the market. Crunch Pak's family of brands includes Crunch Pak with Disney, Crunch Pak with Nickelodeon, and Crunch Pak® Organics. The primary distribution is via retail channels; annually Crunch Pak creates more than 1 billion apple slices at plants in Cashmere, Wash., and New Jersey.

Council reviews office hours and county contracts

By Kirk Beckendorph
Cashmere Reporter

The Council unanimously approved an ordinance that gives the Mayor authority to adjust city office hours as needed. An ordinance adopted in 1995 stipulated that the city maintain specific office hours. Mayor Jim Fletcher told the Council that more flexibility would be beneficial, especially in the time of COVID. He added that many services are now available electronically. As an example of the need for flexibility he said that currently if a staff training or meeting is needed, all office staff are not able to attend. Fletcher reiterated that office hours will primarily stay the same.

No public comments were given during a public hearing about Cashmere's Six-Year Transportation Plan. Following the hearing, the Cashmere City Council voted unanimously to adopt the plan. Council member Daniel Scott said that he wanted to confirm that the plans are not set in stone, Fletcher replied that each year the plan is revisited and can be updated.

During the previous meeting, on Aug. 24, the Council tabled a discussion about the 2021 agreement with the county for emergency services. The matter was tabled due to council members' questions and concerns about the agreement's budget. Following a lengthy discussion at the Sept. 14 meeting, the Council unanimously approved the 2021 contract with the County for \$9115.20. As requested by the Council, Deputy Rich Magnussen, Emergency Management Specialist with the Chelan County Department of Emergency Management (DEM)

provided an explanation to the council about the role of the emergency services and a clarification about the contract's budget. Magnussen said that there are 4 main components of Emergency Management- Mitigation, Preparedness, Response and Recovery. According to the Deputy, his office provides operational support, planning and training to assist the city in those 4 areas. He said that his office provides training, coordinates grants and be a direct link to the state to help the city get emergency-related assistance. Each year the DEM trains fire departments within the county, rotating from city to city. He added that his office can provide the city with Incident Command System training. Derrick Pratt asked who maintains control of decision-making in the event of an emergency, the county or the city. Magnussen replied that the city maintains control of decisions, his office is just there to provide support and assistance. Council member Chris Carlson asked about a line item in the budget for helicopter maintenance and pilots. Carlson said that the city doesn't require a lot of helicopter rescues and so if the city doesn't need helicopters are they still being charged for them. Magnussen said that the budget decisions are not made by his office and that cities are charged a per capita rate. The helicopters are part of the office's overhead and are used primarily for search and rescue but also for observational purposes to get a birds-eye view of a situation or disaster. Scott concluded that the city seems to be getting a pretty good bang for its buck and that this is like an insurance policy.

Unanimous approval was given by

the Council for the city to proceed with designs for a sewer line extension on Sunset Highway, Goodwin Road and into the Goodwin neighborhood. The unanimous vote also authorizes the city to seek funding from outside sources. A study indicates that extending the sewer line is feasible but that extending the water line is not, due to inadequate water flow. Fletcher said that a water line extension would require a whole new water system and reservoir. Prior to the vote, city attorney, Chuck Zimmerman, recommended to the Council that the city extend the sewer line into the neighborhood, not just along the roadways. He said there are already homes in place and eventually their septic systems will fail. The septic line would then be available to homeowners. Zimmerman said that regulations exist that allow homeowners to be forced to connect to a sewer line, if their septic system fails, if the line is within 200 feet. City Director of Operations, Steve Croci, said that the city will seek funding but that there are not a lot of people standing in line waiting to give out money to extend sewer lines.

A scope of services agreement with Pace Engineering for \$5612.00 was approved unanimously by the Council. Based on the agreement, Pace will investigate the best route for a water and sewer line to a parcel of property owned by the city, southeast of the BNSF railroad tracks. The City is exploring options to develop this parcel that is located within the Warehouse/Industrial Zone of the City. Fletcher said that last year someone was interested in purchasing the property until they found out that there were no utilities to the location.



The Leavenworth Lions Club 2019-2020 Lion of the Year is Anita Wilkie. She served as Vice President most of the 2019-2020 Lions Year, but took over after that year's president, Patrick Olsen, needed to resign from his position and the club. In addition to her leadership responsibilities, Anita also took on the research for the club's acquisition of a Vision Screening Machine to serve our area school districts and health clinics need for vision screening. This was a very time consuming endeavor, and the club appreciates all the effort that Anita put into this project.

THE WASHINGTON OUTDOORS REPORT



An Eastern Wild Turkey

PHOTO COURTESY NATIONAL WILD TURKEY FEDERATION.

Wild Turkey For Dinner

By JOHN KRUSE

Lost in the opening of so many hunting opportunities this month is the fall turkey season. This offers the chance to not only bag a big bird weighing up to 20 pounds but also the ability to enjoy a lean, high protein, tasty meal with plenty of leftovers.

In Washington State we have three subspecies of turkey. They are the eastern wild turkey found in Western Washington, the Rio Grande subspecies found in Southeastern Washington and the Merriam's turkey which calls the central and northeastern parts of our state home.

The fall turkey season opened on Sept. 1 in the far eastern counties of Washington and runs through the end of the year. Hunters can harvest two beardless and two either sex turkeys for the season (for a total of four birds). A separate fall season will occur in Klickitat County (Game Management Units 382 and 388) as well as GMU's 568

through 578 (bordering the Columbia River Gorge) from Sept. 26 through Oct. 16 with a one turkey, either sex limit for the season. A small game license and turkey transport tags are required for fall turkey hunting.

Turkey hunting is gaining in popularity. The National Wild Turkey Federation (NWTFF) reports both an increased harvest and a higher number of hunters afield targeting turkey this spring in Washington State. The Washington Dept. of Fish and Wildlife (WDFW) reports fall turkey harvest was up across Northeast Washington last year over recent years, likely due to increased turkey numbers in this region as well as more liberal bag limits. Turkey harvest also increased in Klickitat and Skamania Counties. WDFW reports 150 turkeys were taken last fall compared to 94 in 2018.

Asked for advice about hunting fall turkeys, longtime NWTFF volunteer

CONTINUED TO PAGE B1

During this difficult time support your neighbors

Most local businesses offer curbside service or delivery

THIS WEEK

Opinion..... A2	Sheriff Reports..... A3	Classifieds Index
Letter to Editor..... A2	Pastor Corner..... A4	Classifieds..... B2-B3
Community Calendar..... A3	Church Guide..... A4	Real Estate Guide..... B3
Business Directory..... A3	Regional News..... B1	Advertising flyers
AA Meeting Schedule..... A3		Safeway



\$100

201 Cottage Ave.
Cashmere, WA 98815
Phone: 509-782-3781

www.cashmerevalleyrecord.com



©2020 NCW Media Inc.
201 Cottage Ave, Suite 4
Cashmere, WA 98815
Phone: 509-782-3781

Office hours

Call Leavenworth Echo for more information.
548-5286

Contact information

Publisher

Bill Forhan 509-548-5286
publisher@leavenworthecho.com

Managing Editor

Gary Bégin 509-571-5302
gary@ncwmedia.net

Advertising Sales Manager

Carol Forhan 509-548-5286
carol@leavenworthecho.com

Advertising Sales

Lindsay Timmermans
509-860-7301
adexec1@ncwmedia.net

Reporter/Photographer

Reporter
Reporter@leavenworthecho.com

509-782-3781

Front Office

509-548-5286

Classified / Legal Notices

classifieds@leavenworthecho.com
NCWMarket.com

Circulation

509-689-2507

1-509-293-6780

Cashmere Valley Record
(USPS 092-600)
is published every Wednesday
by NCW Media Inc.,
201 Cottage Ave., Suite 4
Cashmere, WA 98815
Telephone: 509-782-3781
Fax: 509-548-4789
Periodical postage paid at
Leavenworth, Wash.
(and additional mailing offices)
Postmaster:
Send address corrections to:
The Leavenworth Echo,
P.O. Box 39,
Leavenworth, WA 98826-0039

Classified Advertising

Classified ads can be placed during normal office hours by calling 509-548-5286 or emailing classifieds@leavenworthecho.com.

Weekly rates:

\$12.00 for first 30 words
50¢ each additional 5 words (over 30)
Borders, bold words, headlines, logos and photos subject to additional charges.

Subscriptions

In Chelan County (yearly) - \$40
In State (yearly) - \$40
\$45 for print and online
Out of State (yearly) - \$52

The Cashmere Valley Record does not refund subscription payments except to the extent that it might fail to meet its obligation to publish each week, in which case the cost of the issues missed would be refunded as an extension. Subscriptions may be transferred to another individual or organization.
Toll Free 1-509-293-6780

Letters policy

The Cashmere Valley Record welcomes letters to the editor. All letters must be accompanied by the author's name, a home address and a daytime phone number (for verification purposes only). Letters may be edited for length, clarity, accuracy and fairness. No letter will be published without the author's name. Thank you letters will only be printed from nonprofit organizations and events. We will not publish lists of businesses, or lists of individual names. Email your letters to publisher@leavenworthecho.com.

Corrections

The Cashmere Valley Record regrets any errors. If you see an error, please call 509-782-3781. We will publish a correction on this page in the next issue.

On the Internet

website:
www.cashmerevalleyrecord.com
e-mail:
record@cashmerevalleyrecord.com
advertising e-mail:
echoads@leavenworthecho.com

News tips

Have an idea for a story?
Call the Record at 509-782-3781

Services

Back Issues are available up to one year after publication for a small fee. Photo Reprints are available for most photos taken by staff.

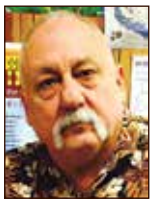
Deadlines

Calendar Listings 5 p.m., Thurs.
News Submissions Noon, Friday
Letters to the Editor: Noon, Friday
Display Advertising: Noon, Friday
Legal Notices: 5 p.m., Friday
Classified Ads: Noon, Monday



Why bureaucrats hate President Trump

There is a reason bureaucrats hate President Trump. As anyone will tell you, it is a matter of "observing the obvious."



APPLES TO APPLES
GARY BÉGIN
NCW MEDIA
MANAGING
EDITOR

Our President believes in getting things done, not putting it into another person's in-basket. Bureaucrats need a full in, pending and not-so-much out-basket to make sure they have a job.

A full in-basket means job security, self-importance and a modicum of power over others as millions of Americans who are desperately waiting for their case (name your agency) to reach that nirvana of "inboxness" and eventually get to the postal service.

When they finally get their cherished answers, decisions and various information, it is normally accompanied by an appeal form. This is, of course, the sacred rabbit hole of all bureaucrats and was invented by an evil genius with the understanding that perception is everything in the public relations world.

By providing an appeal form, the "Agency" (yes, that is how many of them refer to themselves in official correspondence) knows that you know they are giving you rights, but don't expect an appeal to go further than the deniers official rubber stamp after you exercise same.

When an issue, person, case, etc., becomes a public relations nightmare, you know what

starts descending from the top pencil pusher right on down the line to the poor puke at the denial desk.

When the Agency smells an attorney lurking in the weeds or an elected official interested in justice, something magical happens and Agency officials look to besame the right butt.

Bureaucrats are usually happy to stress out regular guys and gals like thee and thou, but throw in an attorney or politico for funzies and watch the world fly away with hair-on-fire pencil pushers running for the exits of non-accountability and finger pointing.

The apocalypse of the bureaucracy is what President Trump threatens every time he opens his mouth or sends a Tweet. He moved the American embassy in Israel to Jerusalem.

No other American president since Israel's 1948 declaration of independence had the guts to do that. Trump didn't ask for rubber stamped documents. I hate to say this out loud, but ICYMI, American dynastic families like the Kennedys, Bushes, Rockefellers, etcetera loved that Arab oil money and connections.

Therefore, not too much love for "extreme" or orthodox Israeli views concerning where the Jewish capital really is and should be. They have a few thousand years of history

on their side. Who are we, a wet-behind-the-ears capitalist democracy trying to appease the murderers from 911.

I don't think our current president is afraid of losing oil revenue or lobby support especially since he is a pro energy company guy who is also bright enough to gather the Jewish electorate and the Christian pro-life vote together by supporting Israel and Israeli goals.

Peace in the Middle East is worthy of giving Trump the Nobel Peace Prize. In the same vein that Israeli Prime Minister Menachem Begin and Egyptian President Anwar Sadat showed bold and determined courage by forging peace, so too is Donald Trump.

Sadat was murdered by terrorists within his own army for making the peace that day. Ironically, Menachem Begin was once considered a terrorist for the bombing of the King David Hotel and was on Britain's most wanted list.

Reflect on this:10 presidents since 1948 relied on being nice to the oil money, the Arabs, when in reality, being nice to Israel was the moral thing to do. They fought more than once for their liberty against overwhelming odds.

The bureaucrats who guided the presidents for 70+ years didn't want to make waves. President Trump broke that mold into many little chards. Now other Arab nations are coming on board Trumps Peace Train.

Listen to the lyrics of the



1972 O'Jays song Love Train:
Tell all the folks in Russia,
and China, too

Don't you know that it's
time to get on board
And let this train keep on
riding, riding on through

All of you brothers over in
Africa

Tell all the folks in Egypt,
and Israel, too

Please don't miss this train
at the station

'Cause if you miss it, I feel
sorry, sorry for you

Diplomatic relations are the best ever. Last week it was the United Arab Emirates, this week Bahrain, joining Israel on the Trump Love Train. More to follow. Peace is coming at last. Trump moved the embassy to its rightful Biblical place and the Arabs are getting used to it.

In 1972 I was working in a sheet metal factory in New York. I had just graduated high school. OPEC had us in

a stranglehold economically. Republican Presidents Nixon, Reagan, Bush I and Bush II didn't do what Trump is doing and has done. There is no arguing with the facts.

I am freer now of Arab oil oppression than I was 48 years ago, but Iran is the enemy now. American weakness allowed the Mullahs to seize victory in a vacuum created by Jimmy Carter not backing the Shah.

Radical Muslims need to be rooted out by their fellow Muslims using economic strangle holds to force them to the peace table.

Donald Trump has figured this out. I am certain he will back it up militarily if needs be. Bureaucrats be damned.

Managing Editor Gary Bégin can be reached at gary@ncwmedia.net. His opinions are not necessarily those of NCW Media.

Response to Taking a Critical Look at Covid

In your article published in the 9/2/2020 edition of the Cashmere Valley record, you make some good points in that case numbers can be misleading, particularly when comparing results from the United States with other countries. I would like to expand on this, and to add some perspective from our local experience in the health care delivery system.

Without doubt, this pandemic has been extremely difficult for many, if not most of us. One of the most challenging aspects has been the degree of uncertainty and the speed of change in what we know about this virus and its effects. Things that we knew or thought we knew when COVID-19 cases first came to our region in early March, have changed as we have become more prepared and as we have learned more from our and international experience. For example, initially we knew there was a shortage of masks, so we needed to conserve masks so that hospitals would have what they need. Now that situation has improved, and we want everyone to wear a mask in public, because we have learned by observation that it appears to significantly reduce the risk of person to person transmission.

It is still difficult to accurately determine the number of cases in our country and in our community. There are several reasons for this, including the fact that many people

spread the disease without showing any symptoms, and the fact that testing materials until more recently have not been available to test everyone who should be tested. Because it's not possible to test everybody, the raw numbers tend to underestimate how many people have had the disease. In the future, tests to detect COVID-19 antibodies may be helpful to determine how much of the population has had the infection. For now, however, there have been 6,426 confirmed cases in the Okanogan, Grant, Chelan and Douglas County region, or about 2.5% of the population overall. Results of antibody testing in other regions suggests that that the total number infected here is not more than double that, so we estimate that at most 5% of the North Central Washington residents have been infected. This is far less than the number needed to achieve generalized "herd" immunity, which is estimated to be 60-70%. So, there are plenty more of us who could become infected between now and when an effective vaccine is widely available. We also do not know if the immunity is lifelong. It is not for other subtypes of Coronavirus.

We also know that so far, Central Washington Hospital has admitted over 200 patients for treatment of COVID-19, again given an estimated infection rate of 5% of the population over the last 6

months. We have had up to 29 COVID-19 positive patients admitted to the hospital at one time. Our ICU is built out for 20 patients, although we often are limited to caring for less than that number due to the limited availability of ICU trained nurses. There have been so many patients critically ill with COVID-19 requiring ICU care, that we had to expand our Intensive Care Unit and Progressive Care Units and to divert well trained and specialized staff from other necessary patient care areas to help care for them. This has occurred at great cost in terms of time, stress and both physical and emotional exhaustion of our nurses, respiratory therapists, medical assistants, laboratory staff, pharmacy staff, and other health care providers and support staff. We are also fortunate to have at Confluence Health two physicians who specialize in Infectious Disease, which enables us to provide the most effective, up-to-date care possible. We are extremely grateful to all these staff for their contributions. However, we are acutely aware and concerned that it is not humanly possible to continue this level of effort for very long. And because this is the case all around this country and the world, it is not feasible simply to hire more people to help us get through this. It is because of these staff members and physicians that the hospitalized patient mortality rate here is only about 10%. Given the severity of the illness of those admitted, I estimate that half of those admitted would not

survive without hospital care (no survival of ICU patients without needed ICU care). This would increase the total deaths in the area from the 30 noted in your article to 130. By the end of a time to achieve "herd immunity" at 60% of the population infected, that would be 12 times that or 1,560 people. We have had patients in our region, from various age groups, who have recovered enough to be discharged home from the hospital, but who have continued to require oxygen therapy for months afterward. The long-term consequences of COVID-19 are only beginning to be seen and understood.

From a medical economic perspective, care for patients is modeled based on QALYs (Quality Adjusted Life Years). These are defined as the amount that this country has decided it is willing to pay for an additional year of an individual's life. There is debate but the number is at least \$100,000 per QALY (many currently accepted treatments for genetic diseases and cancers are significantly above this). If one says that the average age of death of an individual who dies with COVID-19 is 10 years younger than the age of death would have been and 2 Million people die (330 M population X 60% infected before herd immunity is attained X 1% death rate), then the economic modeling suggests \$100,000 X 10 years X 2 million people = \$2 Trillion just in the deaths, not including the morbidity suffered by those who survive.

Meanwhile, the care of patients with the types of conditions we routinely care for has been affected by the changes required by COVID-19

and there will be an unknown number of deaths from that care delay. In addition, there have been emotional health impacts. Our visitor policy has been severely restricted and this affects many people negatively, but is necessary in order to prevent the spread of COVID-19 within our facilities, which would be unacceptable. We have also had to send critically ill or injured patients to other hospitals because we have been too full, which is a disservice to people from our region who need care.

So, while the numbers are somewhat uncertain and reasonable people may disagree about them, we do know that they are high here. We know that people are suffering, and some are dying, and that they cannot have visitors like they would in normal times. We know that our hospitals have been too full, that our health care workers are being overwhelmed, and that this is affecting people with other conditions.

So, what can we do about all of this? Continue to wear a mask when you are in a public place. Take physical distancing recommendations seriously. Do not congregate closely with people, especially for more than a minute or two. Please do these things to protect yourself, but at least do them to protect others around you, and to protect our health care and other "essential workers". Also remember that the more quickly and completely we get this under control, the sooner we will be able to do get back to many of the things we miss, such as resumption of schools, religious gatherings, in-person services and social events.

LETTERS TO THE EDITOR

Hello Mr. Forhan,
I appreciate your article "Taking a critical look at Covid statistics". I agree that often the arithmetic stated by the media regarding the virus isn't complete. Often the numbers are generalized instead of comparing "apples to apples". Therefore the news seems more frightening than true percentages would indicate.

In approval of your opinion,
Lauraine McGregor
Wenatchee, WA.

Hello, Salmon Fest Friends and Partners!
Hailey and I miss you all!
As we have been working on a fun Virtual Salmon Fest

2020 Video Project these past few weeks, we have been at the Hatchery feeling rather sentimental and thinking of you all. The Hatchery feels like a ghost town and is very quiet right now. Our 30th Anniversary Salmon Fest Celebration, "Salmon of the Future", would have begun for us all tomorrow, September 17th, 2020.

Just think, we would begin our day signing in for our shift at the front gate, checking our radios, greeting buses, training volunteers, putting on many last minute touches, setting up chairs at the theatre, lighting the campfire at the Village for salmon baking, straightening

up signs, breaking speed limits while driving golf carts, checking on the action of our fish in the giant aquarium, transporting the last of the equipment around the grounds, setting up PA systems, smelling the coffee and Kettle Corn popping in the food booth area, making certain we have enough staffing at each activity, and watching the mascots enthusiastically greet the big yellow buses as they arrive to our parking lot past the incredible uniformed parking attendants in full attention!!

Covid 19 shut us down this year. And, maybe the the intense smoke and hazardous air quality we are living in now

would have caused a closure the same anyway...just as we faced years ago on the opening morning of School Days.

We miss you and we thank you and salute you for your years of hard work and dedication to our cause. We have succeeded in teaching high quality natural resource education, promoting healthy outdoor education, and sharing the cultural significance of salmon to the peoples of the Pacific Northwest. And, up to this date, we have hosted more than 210,000 visitors, volunteers, students, and staff to our award-winning event in North Central Washington.

So, now we hope to pick up where we leave off this year to begin making plans for Current Salmon Fest 2021 next September. Currently, several of us are designing and developing a Virtual Salmon Fest on-line program for teachers and the public. We are excited to share more details with you as we progress. So, please hang on for more information coming in the next couple of weeks!

Take good care and again, we thank you so much!

Corky and Hailey
PS. Please forward this on to other Salmon Fest friends you can think of that we have left off here accidentally.

Here today... ...gone tomorrow!
Get rid of all that extra stuff with an ad in the Echo/Record Classified Ads.
Call us at 548-5286

COMMUNITY BULLETIN BOARD

Local, Regional Community News & Events

Who: Any non-profit 501(c)-(3) group, person(s). Must submit full name and phone number.
What: Items pertaining to local events that are free or maximum charge of \$100 fee.
Where: Email to: reporter@leavenworthecho.com or reporter@cashmerevalleyrecord.com
 Or fill out the online form at: LeavenworthEcho.com or CashmereValleyRecord.com

Another way to advertise your News & Events

Go to: www.NCWMARKET.COM • 24/7
 Choose your category and pay for Print & Online at one time
 For more information on any of these items. 509-548-5286 or classifieds@leavenworthecho.com

Please check with your church, local businesses, organizations, meetings and events that may have closed, cancelled, or postponed until further notice. We will have updates on our websites as well. Feel free to update us by email at Reporter@leavenworthecho.com or Publisher@leavenworthecho.com. Stay Well.

Cashmere

Free Chipping Event for Chelan County residents

Register by Sept 30 here: <https://www.surveymonkey.com/r/JC2LKGX> (or via the link at www.cascadiacd.org). For questions or

additional information contact Amanda Newell with Cascadia Conservation District, (509)436-1601 or amandan@cascadiacd.org

Divorce Recovery Support Group

Will be each Tuesday evening at 6:30 pm., beginning

October 6- December 30 at the Henry Building, 120 Cottage Avenue, Cashmere. We will use a video series and workbooks. There is no fee for the class; the workbook is \$20 and entitles the participant to repeat the class as many times as desired. To sign up, please call or text Joyce at 509.679.2100 with name and email.

COMMUNITY CALENDAR

Wednesday

Rotary Club, Noon, Cashmere Presbyterian Church, 303 Maple St. Call President, Kris Taylor, 782-4300, Cell 679-0146.
Cashmere Food Bank, 2:30-3:30, Cashmere Food Distribution Center, Riverside Park, for more information, call Pam, 509-669-3159.
Cashmere Park and Recreation Committee, 6:30 p.m., City Hall. Call 782-3513. (last Wed., each month.)
The Underground Youth Group, 6th-8th graders. 6:30-8 p.m. Christ Center, 206 Vine Street. Call Steffanie, 782-2825.

Thursday

Caregiver Support Group, 2-3:30 p.m. For Caregivers of those with Memory Loss. The Henry Building, 120 Cottage Ave. Contact Carmen Gamble, 509-393-0789. (1st & 3rd Thurs.)
Cashmere Sportsmen's Gun Club, 6:30-10 p.m. Shooting range on Turkey Shoot Road. Call Brian, 782-3099.
Cashmere American Legion Post 64. 7 p.m., American Legion Hall, 401 Sunset Highway. Commander Ken Komro, 782-4973. (1st Thurs. of every month, August -June).
Cashmere American Legion Auxiliary #64, 7 p.m., American Legion Hall, 401 Sunset Highway. President Linda Ingraham, 679-0243. (1st Thurs. of every month, August -June).

Friday

Evergreen Baptist Church Youth Group (ages 13-20), 6:30-8 p.m., 5837 Evergreen Drive. Call 782-1662.

Saturday

Bingo, 6 p.m., American Legion Hall, 401 Sunset Highway. Call Wiley Collins, 888-1904. No Bingo due to the COVID-19 Virus pandemic.

Sunday

CHURCH: See the church page for local service times and events.
The Underground, youth group for high schoolers. 6 p.m., Christ Center. 206 Vine Street. Call Steffanie, 782-2825.

Monday

Cashmere Wacoka Kiwanis Club, 6:30 p.m., American Legion Hall, lower level. Call Mary, 782-2057. (2nd & 4th Mon.)
Tillikum Riders: 7 p.m. Chelan County Fairgrounds. Call Cindy, 662-5984. (1st Mon.)
Cashmere City Council, 6 p.m., City Hall (2nd & 4th Mon. of each month (unless a holiday, then Tues.).
Planning Committee Meeting, 5 p.m. at City Hall (1st Mon. of each month).
Cashmere Fire Department, Business management, 7 p.m., above City Hall. Call Chief Matt Brunner, 782-3513. (3rd Mon.)
Cashmere Fire Department, meeting, 8 p.m., above City Hall. Call Chief Matt Brunner, 782-3513. (3rd Mon.)
Cashmere School Board, 6:30 p.m., School District Office. Call 782-3355. (4th Mon.)
 Chelan Douglas Republican Women, luncheon meeting, 11:30 a.m. Contact President Ellie, 425-319-9869 (1st Mon. each month).

Tuesday

I.P.I.D. meeting, 8 a.m., on Wescott Dr., Cashmere. Call Anthony Jantzer, 782-2561. (2nd Tues.)
Icicle & Peshastin Irrigation Districts: Meeting change for Sept. and Oct. now at 5 p.m. Call Anthony Jantzer, cell, 509-433-4064 or tony.iid.pid@nwi.net (2nd Tues.)
Ministerial Association, 8 a.m., Epledalen lunchroom. Call 782-7600. (2nd Tues.)
Cashmere Chamber of Commerce. Noon, everyone is invited to attend as a guest. Call Executive Director, Gina, for meeting location, 782-7404. (3rd Tues.)
Buns, Books and Tea, Peshastin Book Club, Peshastin Library. Call Kathy, 509-433-1345. (3rd Tues.)

Ongoing events

Cashmere Public Library: 782-3314
 Call for other information if not listed.
 Mon., Tues., Wed., and Fri. 9 a.m.- 6 p.m.
 Thurs., 11 a.m.- 8 p.m., Sat., 9 a.m.-1 p.m. Sun., Closed.
Events:
 Tues. & Wed., 10-10:30 a.m. **Story time Pre-K & up**
 Wed., **Preschool Story time**, 10-10:30 a.m.
 Wed., **Bilingual Story time**, 4:30-5 p.m. (last Wed. of every month)
 Fri., **Baby/Toddler Story time**, 10:30-11 a.m.
Cashmere Museum and Pioneer Village
 Sat., 10 a.m.-4 p.m., and Sun., Noon- 4 p.m.
Chelan County Historical Society Board meets, 7 p.m., Cashmere Museum, 600 Cotlets Way. Call 782-3230. (3rd Thurs.)
Note: Some meetings or events may be rescheduled due to holidays or other closures. Please call and check with that organization listed.

Be Prepared!

SUBMITTED BY RACHEL HANSEN
 Chelan PUD

Wildfire conditions could bring potential power outages. It's always smart to plan ahead. Our region's wildfires

make our electrical system more prone to power outages. Our systems are designed with backup for greater reliability. Wildfires limit our access to some of these backup systems. So it's even more important now that we're all prepared. Talk with your family, make

a plan and remember, if the lights go out:
 • Call Chelan PUD 24/7 at 877-783-8123
 • Stay away from damaged or fallen power lines and call 911 to report them
 • Treat all fallen lines as "live"
 • Turn off or unplug appliances and electronics

• Leave on one light that crews can see from the road
 • If using a portable generator, make sure the devices being powered are plugged directly into the generator
 For more information, visit chelanpud.org/outages, or call our Customer Service at 509-663-8121

SPEIDEL BENTSEN LLP
 ATTORNEYS AT LAW | EST. 1986

Estate Planning
 (509) 662-1211

Russell J. Speidel | David J. Bentsen
 7 North Wenatchee Avenue, Wenatchee
www.SpeidelBentsen.com

We provide excellent legal services in estate and tax planning, trust and estate administration, and nursing home planning.

CHELAN COUNTY SHERIFF, FIRE & EMS REPORTS

This report is compiled from records provided by the Chelan County Sheriff's Office and RiverCom. The publisher cannot certify the complete accuracy of the information provided.

September 11

08:47 **Suspicious**, Pioneer Dr. & Brender Canyon
 08:53 **Hazard**, 8101 Hay Canyon Rd.
 14:20 **Theft**, 3550 Red Apple Rd.
 23:56 **Alarm**, 6478 Tripp Canyon Rd.

disturbance, 5640 Airport Rd.
 12:56 **Parking/abandon**, 300 Blk. Chapel St.
 16:07 **Civil**, 318 Peshastin St.

September 15

08:56 **Scam**, 5145 Burke Rd.
 08:59 **Agency assist**, 6555 Johnson Rd., Dryden
 14:05 **Malicious mischief**, 8055 Nahahum Canyon Rd.
 15:57 **Welfare check**, 5862 Sunset Hwy.
 16:30 **Juvenile problem**, 201 Riverside Dr.
 17:07 **DUI**, 7910 Nahahum Canyon Rd.
 19:06 **Agency assist**, 3717 Bridge St., Monitor
 22:10 **Harass/threat**, 422 Elberta Ave.
 22:22 **Civil**, 300 River St.
 22:23 **Trespass**, 411 Aplets Way

September 16

07:26 **Extra patrol**, 6800 Blk. Stine Hill Rd.
 09:28 **Accident/no injuries**, 7832 Smith Rd., Dryden
 13:34 **Disturbance**, 303 Independence Way
 13:37 **Sex offense**, 7886 Stine Hill Rd., Dryden
 17:11 **Juvenile problem**, 201 Riverside Dr.
 18:33 **Suspicious**, 3717 Bridge St., Monitor

September 17

14:19 **Public assist**, 115 E. Pleasant Ave., #18
 15:00 **911**, 6828 Dryden Ave.
 21:46 **Suspicious**, Railroad Ave. & Olive St.

September 12

09:24 **Public assist**, US Hwy. 2 & Dryden Ave., Dryden
 11:14 **Juvenile problem**, 201 Riverside Dr.
 11:58 **Theft**, 5389 Hughes Rd.
 14:20 **Welfare check**, Mission Creek Rd. & Pioneer
 14:45 **Assault**, 108 1/2 Cottage Ave.
 15:07 **Traffic offense**, 8112 Depot Rd., Dryden
 17:27 **Burglary**, 3221 Allyn Ln., Monitor
 17:39 **911**, 3715 Bridge St., Monitor
 18:57 **Malicious mischief**, 201 Riverside Dr.
 19:39 **Runaway** 5415 Binder Rd.
 22:09 **Suspicious**, 3540 Zager Rd., Monitor

September 13

00:51 **Suspicious**, Pioneer Ave. & Peshastin St.
 03:52 **Alarm**, 5183 Mission Creek Rd.
 13:12 **Assault**, 817 Pioneer Ave.

September 14

01:12 **Domestic disturbance**, 302 Fisher St., #112
 02:12 **Domestic**

BUSINESS & SERVICE Directory
 Add your business or service to this directory. 548-5286

DRILLING

Tumwater Drilling and Pump Inc.

"Water Treatment Systems Built to Your Individual Problem"

Free Water Analysis/Estimates

Conveniently located on Hwy 2 across from the Big Y Cafe in Dryden @ 9290 Hwy 2

Tumwater Drilling & Pump, Inc.
 548-5361
www.tumwaterdrilling.com • email info@tumwaterdrilling.com

WATER SOFTENERS, IRON FILTERS, CONDITIONERS, UV FILTERS, REVERSE OSMOSIS, SULFUR, WHOLE HOUSE FILTERS, PREVENTATIVE MAINTENANCE, SERVICE, SALT SALES

STORAGE

Have spare room in your facility? Advertise on

STORAGE NCWMarket.com

DOWNTOWN CASHMERE MINI STORAGE

5x10- \$60 Per Month
 10x10- \$80 Per Month
 8x14- \$90 Per Month

•Secure Timed Keylock System•
 •Mobile Platform Available•
 •Burglar Alarm•
 •Camera Surveillance•

782-8113
 201 Cottage Ave., Cashmere

EXCAVATION

Complete Excavating Service

Power & Water Systems
 Dump Truck & Dozer
 Drainfield Repair
 Free Estimates
 Septic Systems
 Road Grading

Upper Valley EXCAVATING
 (509) 548-3489
 Leavenworth, WA
 Licensed - Bonded - Insured

STUMP REMOVAL

Quick 'n Easy Residential Stump Removal

STUMPS UNLIMITED

10817 North Road, Leavenworth • (509) 548-8222
 Kim & Rosalie Kozelisky
 Licensed, Bonded, Insured • Cont. #UPPERVE200PI

Now on the Net! See the area's most complete and up-to-date classifieds!

Check out our online classifieds at NCWMARKET.COM

We are here to serve families in Leavenworth, Peshastin, Plain and the entire Upper Valley.

LOCALLY OWNED

JONES & JONES ~ BETTS
 Funeral Home

302 9th St., Wenatchee • 662-2119 or 662-1561
jonesjonesbetts.com

Honoring the lives of residents in the Valley for over 100 years. You can always rely on our dedicated staff.

AA MEETING SCHEDULE

Information numbers for AA:
 The phone number to call for the Zoom link to Leavenworth AA meetings is 541-480-8946
 The phone number to call for the Zoom link to Leavenworth AIAnon meetings is 509-548-7939
 509-548-1627, 548-4522, 664-6469, 425-773-7527, 206-719-3379
Sunday, 9 a.m., Leavenworth Senior Center, 423 Evans St.
Sunday, 7 p.m., Leavenworth Senior Center, 423 Evans St.
Tuesday, noon, First Baptist Church, 429 Evans St.
Tuesday, 7 p.m., Light in the Valley, 8455 Main Street, Peshastin
Wednesday, 7 p.m., Leavenworth Senior Center, 423 Evans St.
Thursday, noon, First Baptist Church, 429 Evans
Friday, 7:30 p.m., Plain Community Church, 12565 Chapel Dr., Plain
Information number for Alanon: 509-548-7939
Alanon Meeting Schedule
Monday, 7 p.m., United Methodist Church, 418 Evans St.
Celebrate Recovery
We will be meeting via Zoom weekly on Fridays at 6:30 p.m. Please email celebraterecovery1cn@gmail.com for more information.

Where Is God In This Mess?

With the corona virus situation, have you looked around and wondered, "What on earth is going on? God, where are You in all of this?"



JOYCE WILLIAMS
Pastor of Congregational Care

Well, you are not alone in wondering what is going on when everything seems to be falling apart! I Corinthians 10:11 says that the Old Testament was given to us as admonitions (that means examples with lessons) so we would understand how God deals with people.

Psalm 103:7 tell us that God made known his ways to Moses, His acts to the children of Israel.

Over the years, I have been fascinated by "the ways of God." And I've tried to look at the scriptures with an eye for picking up on the lessons that are hidden in plain sight.

As I was thinking about fear, oppression, injustice, things that don't make sense, I was reminded of what Moses's conversation with God in Exodus 5 and 10.

Moses asked Pharaoh to let God's people go. However, Pharaoh chose to punish the Israelites by ordering them to make bricks without straw.

"O Lord, why have you brought trouble upon this people? Is this why you sent me? Ever since I went to Pharaoh to speak in Your name, he has brought trouble upon this people, and You have not rescued Your people at all."

Then the Lord said to Moses, "Now you will see what I will do to Pharaoh..."

And then in Exodus 10, God said to Moses, "I have hardened Pharaoh's heart, and the

hearts of his officials, so that I may perform these miraculous signs of mine among them, that you may tell your children and grandchildren... that I am the Lord."

Here we catch an insight into God's methods... Pharaoh had subjugated the Israelites in slavery... and when it came time for deliverance, God didn't just wave a magic wand and make everything better—no, He allowed things to get worse to expose Pharaoh's evil heart and the evil hearts of his officials. And only after that did He bring about justice and deliverance.

I love the statement by the Earl of Warwick in the novel and movie, Black Arrow,

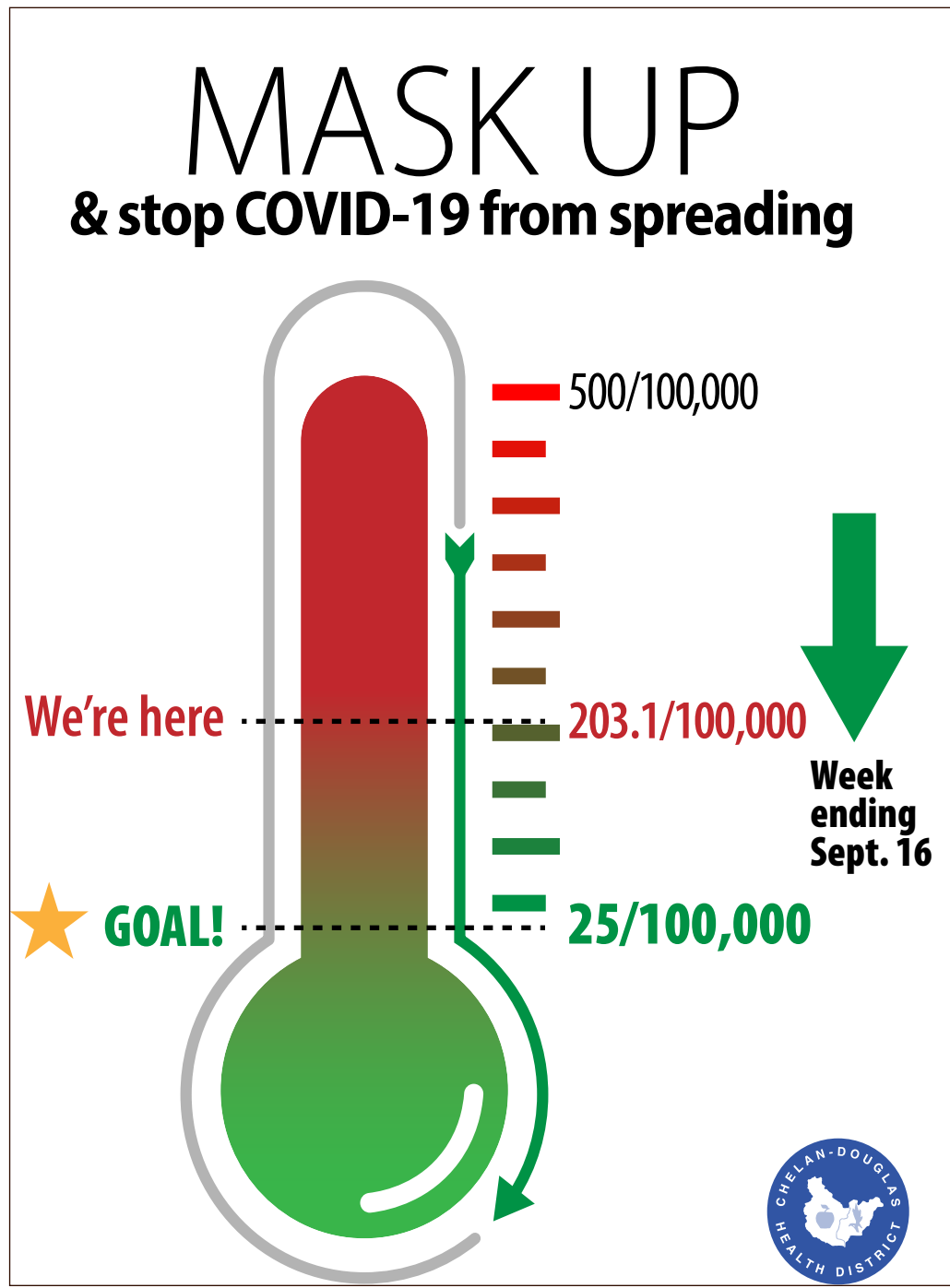
written by Robert Louis Stevenson. He said, "It is not enough for justice to be done, justice must be seen to be done."

And that is exactly what God did with Pharaoh! And he explained that to Moses.

So, when things are bad and seem to be getting worse in the world or in a personal situation, take a good look behind the scenes. Is God uncovering sin, exposing evil? Be alert to "the rest of the story." Vengeance and justice belong to the Lord; so, let's look up—our redemption is getting really close! Even when God doesn't seem to be working, He is working. And just maybe, He is trying to

re-direct your life, alter your priorities, or give you wisdom and insight you couldn't acquire any other way. Start praising Him—His ways are higher than ours—but they are always best.

Put your trust in Him; all His ways are good, and all things work together for the good of those who love Him. And just as a side note, God didn't say all things work together for your "happiness"; God's purpose is not to make you happy—it is to conform you to the image and character of Christ. If we make that our goal, we will continue to learn and grow, and see God at work, even in the most difficult of situations.



And the winner is! The Rotary Bike Raffle winner was Elisabeth Saunders. She opted to only take one of these bikes so a second drawing was held for the other bike. Paul Jinneman was the winner of the other bike. Jinneman said he plans to give the bike to his 88 year old father who lives in Scottsdale, AZ.

Board of Health Announces New Interim Administrator

SUBMITTED BY VERONICA FARIAS
Chelan-Douglas Health District

Wenatchee/Olympia, WA — At a special Board of Health (BOH) meeting Wednesday, September 9, the Chelan-Douglas Health District (CDHD) Board voted to approve a request for assistance from the Washington State Department of Health (DOH) to identify an Interim Administrator to lead CDHD.

Nathan Weed, Director of Community Health Systems at DOH, will serve as the Interim

Administrator starting today. He will provide leadership and support the recently formed CDHD Coordinated Policy Group, responding to the COVID-19 pandemic. The BOH is recruiting for a permanent Administrator. As Interim Administrator, Mr. Weed will also assist CDHD and BOH by strengthening relationships with local healthcare centers and key community groups, especially those representing the Latinx community.

Mr. Weed has a background in infectious disease, epidemiology and public health

preparedness and response. He has served in many senior leadership positions in state and local government to prepare him for this role. Mr. Weed currently directs the Office of Community Health Systems at DOH. He previously served as the Deputy Director of Emergency Preparedness and has also worked in local public health in Washington and Louisiana. Mr. Weed has been deeply engaged in the COVID-19 response, including serving as Incident Commander for the statewide health response.

Check the weathercams on the web before travelling over the mountain passes!
Find these links on our Web sites
www.leavenworthecho.com
www.cashmerevalleyrecord.com

Due to the COVID-19 virus, all churches in the Upper Valley have suspended Saturday and Sunday services, Sunday School and meetings.
Please call or email your church listed below if you need more information. May you take time to pray, rest, meditate and reflect during this time. Stay well, stay strong and stay informed.

UPPER VALLEY CHURCH GUIDE

New to our area? On vacation? These churches welcome you!

TO PLACE INFORMATION IN THE CHURCH GUIDE CALL 548-5286

CASHMERE

CASHMERE BAPTIST CHURCH
103 Aplets Way • 782-2869
Sunday School 10:00 a.m. - Worship 11 a.m.
Bible Study, Wed., 7 p.m.
Pastor Bob Bauer
Find us on Facebook at Cashmere Baptist Church

CASHMERE PRESBYTERIAN CHURCH
303 Maple Street • 782-2431
Sunday Morning Worship 10:30 a.m.
Call for activities: Pastor Charles Clarke
www.cashmerepres.org

CASHMERE UNITED METHODIST CHURCH
213 S. Division • 782-3811
Worship & Sunday School at 11:00 a.m.
Office Hours: Monday - Thursday
10:00 a.m. - 1:00 p.m.
Pastor Lilia Felicitas - Malana

CHRIST CENTER
Cashmere Assembly of God • 509-782-2825
Worship Services are available ONLINE ONLY at 10 a.m. Sundays
All updates on COVID-19 can be found at christcentercashmere.com/cc-updates
Underground High School Group, ONLINE ONLY at 6 p.m. Sundays
Lead Pastor, Steve Haney
Children's Pastor, Andy Robinson
Congregation Care Pastor, Joyce Williams
Director of Operations, Pastor Ian Ross
High School Director, Steffanie Haney

GRACE LUTHERAN CHURCH
Morning Prayer, Evening Prayer or Holy Eucharist. Times and place will vary due to COVID restrictions.
Service on YouTube or Email link: CashmereEpiscopalLutheranMinistries.org
Contact Pastor Rob Gohl 509-860-0736 for more information.

ST. JAMES EPISCOPAL CHURCH
Morning Prayer, Evening Prayer or Holy Eucharist. Times and place will vary due to COVID restrictions.
Service on YouTube or Email link: CashmereEpiscopalLutheranMinistries.org
Contact Pastor Rob Gohl or Deacon Carol, 670-1723 for more information.

EVERGREEN BAPTIST CHURCH
5837 Evergreen Drive • 782-1662 • Sunday School - 9:45 a.m. • Morning Worship - 11 a.m. • Evening Service - 6:00 p.m. • Pastor John Smith www.christforcashmere.org

DRYDEN

DRYDEN COMMUNITY CHURCH
Hwy 2 at Dryden Ave. • 782-2935 Sunday School 9:30 a.m. • Worship 10:45 a.m. Pastor Steve Bergland

MID-VALLEY BAPTIST CHURCH
8345 Stine Hill Rd. • 782-2616
Worship Service, 10 a.m., Sunday School, 9 a.m.
Pastor Mike Moore
www.midvalleybaptist.org

LEAVENWORTH

CASCADE MOUNTAIN BIBLE CHURCH
"Where God's Word Remains The Pillar Of Truth"
11025 Chumstick Hwy. • 548-4331
Sunday School 9 a.m. • Sunday Worship 10:30 a.m.
AWANA (Youth Program) Weekly Bible Studies
Wednesday 6:30 p.m. (school year)
Pastor Todd James • www.cmbiblechurch.org

SEVENTH DAY ADVENTIST CHURCH
10600 Ski Hill Drive • 548-4345
Saturday Services
Bible Study 9:30 a.m. • Worship 11 a.m.
Fred Smith • 860-3997

SPIRIT LIFE CENTER
210 Benton Street • 548-7138
Sunday Worship 10 a.m.
Prayer 6 p.m.
Wednesday Bible Study 6:30 p.m.
Pastor Russell Esparza

MONITOR

MONITOR UNITED METHODIST CHURCH
3799 Fairview Canyon • 782-2601
Church Service & Sunday School 9:00 a.m.
Pastor Lilia Felicitas - Malana

PESHASTIN

LIGHT IN THE VALLEY COMMUNITY CHURCH
8455 Main Street • 548-7517
Sunday Worship 10 a.m.
Pastor John Romine
www.lightinthevalley.org

NEW LIFE FOURSQUARE CHURCH
7591 Hwy. 97 • 548-4222
Sunday Worship, 10 a.m.
Pastors, Darryl and Mindy Wall
Email: newlifeleavenworth@gmail.com
FB page: newlifeleavenworth.com

CORNERSTONE BIBLE CHURCH
Leavenworth Grange Hall
621 Front St. • 548-0748
Sunday Worship 10 a.m.

CHURCH OF JESUS CHRIST OF LATTER-DAY SAINTS
10170 Titus Rd. (across from middle school)
Church: 548-7667
Meetings: Sunday - 10:00 a.m.

FAITH LUTHERAN CHURCH - ELCA
"Reconciling Works Congregation"
224 Benton Street • 548-7010
Worship 9:30 a.m. w/coffee following
www.faithleavenworth.org

FIRST BAPTIST CHURCH OF LEAVENWORTH, SBC
429 Evans Street, 509- 470-7745
Sunday Worship: 11:00 AM
Website: www.leavenworthbaptist.com
Email: info@leavenworthbaptist.com

LEAVENWORTH CHURCH OF THE NAZARENE
111 Ski Hill Drive • 548-5292
Sunday Worship 9:00 a.m.
Lead Pastor: Mark Miller
Youth Pastor, Kent Wright
www.LCN.org

Substantial Donation Given to Cascade Medical Foundation's Mobile Clinic Campaign

By MARLENE FARRELL,
CMF Coordinator

Cascade Medical Foundation (CMF) recently received a wonderful boost for its campaign to raise funds for a mobile clinic to serve the Upper Wenatchee Valley. A generous donation from the Williams Friendship Fund, a legacy fund developed at the bequest of Walter and Marie Williams, will go a long way toward helping CMF reach its

goal of \$250,000. CMF and Cascade Medical have been conducting a community campaign and are also seeking private and federal grants to cover the mobile clinic startup costs. The contribution reflects the Williams' values. During their lives, the Williams were deeply touched by connections they made with people from other cultures, most specifically World War II Japanese POWs and their families and

Vietnamese refugee families who immigrated to Seattle after the Vietnam War. The purpose of the Williams Friendship Fund, managed by the Seattle Foundation, is "to promote understanding and friendships that cross national boundaries and barriers of foreign languages." A mobile clinic run by Cascade Medical embodies the spirit of that mission. There are people in the

hospital district facing barriers to healthcare related to cost, transportation, scheduling and language. The latter is a chief obstacle for Latinx residents. The mobile clinic is one way Cascade Medical can address these gaps in healthcare equity. Fully bilingual staff running the clinic will ensure improved access and understanding for Spanish speaking patients. Donating to support the mobile clinic is for the greater

good. By bringing a large range of healthcare services to residents right where they live and work, the health of our community will improve. Good health is fundamental to strong communities. If you would also like to donate toward CMF's mobile clinic campaign, please go to the website, www.cascademicalfoundation.org and push the donate button. CMF wants to thank the Williams Friendship Fund and

also other dedicated supporters to this cause, including Icicle Creek Center for the Arts and musicians Beth Whitney, Eric Link and Eden Moody for partnering with us for a fundraising virtual concert. Another thank you to The Squirrel Tree Restaurant for hosting a hugely successful all-day Benevolent Event and to the many individual donors who have given toward this mobile clinic campaign.

State Awards \$18 Million in Grants to Recover Salmon

SUBMITTED BY SUSAN ZEMEK

OLYMPIA—The Salmon Recovery Funding Board today awarded \$18 million in grants to organizations around the state to repair rivers, remove barriers blocking fish passage and replant riverbanks in an effort to recover salmon from the brink of extinction. The grants, given annually, went to 91 projects in 29 of the state's 39 counties. In addition, the funding board approved Puget Sound projects, requesting \$38 million, to be funded from the Puget Sound Acquisition and Restoration Fund, which awaits Legislative approval next year. "These grants are the lifeblood of our salmon recovery efforts in Washington State," said Gov. Jay Inslee. "They fund the core of our efforts and attract \$37.5 million from other sources. These

grants, along with the hard work invested by thousands of people working in our state to save salmon, have gone a long way to slowing the decline of salmon."

Salmon on the Brink

As Washington's population grew, its salmon dwindled. In 1991, the federal government declared the first salmon in the Pacific Northwest as endangered under the Endangered Species Act. That listing was followed by a flood of additional listings in the late 1990s. By the end of the century, wild salmon had disappeared from about 40 percent of their historic breeding ranges in Washington, Oregon, Idaho and California. In Washington, the numbers had dwindled so much that salmon and steelhead were listed as threatened or endangered in

nearly three-fourths of the state. Today, 17 species of salmon, steelhead and bull trout in Washington have been put on the Endangered Species Act list. The Legislature created the Salmon Recovery Funding Board in 1999 to determine how best to funnel state and federal funding into recovery projects. No new species of salmon have been added to the Endangered Species Act since 2007. Grants were awarded in the following local counties.

Chelan County Projects	\$999,362
Okanogan County Projects	\$856,438

Both the grants approved on Sept. 17, and those awaiting legislative funding will accomplish the following:
• Remove 20 barriers to fish migration

- Open more than 45 miles of habitat to salmon
 - Restore more than 217 miles of stream
 - Restore nearly 292 acres of estuary
 - Conserve nearly 64 miles of stream
- "For the past 20 years, the Salmon Recovery Funding Board has been awarding grants for on-the-ground projects around the state," said Phil Rockefeller, board chair. "These projects are making a difference, not only to salmon, but to the other animals that rely on salmon for food, such as orcas, and to the people that rely on them for their livelihoods. We also appreciate and value salmon as part of our heritage and want to ensure they will survive for future generations." Commercial and recreational fishing in Washington is estimated to

support 16,000 jobs and \$540 million in personal income. Recreationally, an estimated \$1.5 billion is spent annually on fishing and shellfishing in Washington, supporting many rural families and businesses.

Salmon are a keystone species, upon which many other animals rely. One report documented 138 species of wildlife, everything from whales to flies, that depend on salmon for their food. Investing in salmon recovery also has economic benefits. Every \$1 million spent on forest and watershed restoration generates between 15.7 and 23.8 jobs. About 80 percent of that funding stays in the county where the project is located. Overall, salmon recovery funding since 1999 has resulted in more than \$1 billion in economic activity. "Personally, I can't imagine a Washington without salmon," said Kaleen Cottingham, director of the Recreation and Conservation Office,

which provides support to the funding board. "Without these grants, I think that's what we'd see. I'm grateful that Congress and the state Legislature have continued to fund these important projects."

How Projects are Chosen

Projects are selected by lead entities, which are watershed-based groups that include tribes, local governments, nonprofit organizations and citizens. The projects are based on federally approved, regional salmon recovery plans. Lead entities vet projects through citizen and science committees. The projects then are reviewed by regional organizations and submitted to the Salmon Recovery Funding Board for funding. Regional salmon recovery organizations and the board review each project for cost-effectiveness and to ensure they will benefit salmon.



A young hunter with a wild turkey

PHOTO COURTESY NWTF

Outdoor Report

CONTINUED FROM PAGE A1

Richard Mann suggests calling not the toms, but the hens, especially the dominant boss hen in a flock. If you spot a flock observe which way they are going and try to position yourself in front of them for a shot. Another option is to bust up the flock and then take a covered position where they were at. Then call to them to bring them back. Annemarie Prince and Ben Turnock, WDFW biologists working in Northeast Washington, says when it comes to finding fall turkeys remember, "During fall and winter, wild turkey priorities are food and roosting areas. Forest edges that offer seeds, nuts, and fruits, as well as some green vegetation, are used the most." "At this time of year, turkeys are at their highest population and widest distribution within northeastern Washington. As

autumn wears on and snowfall comes, the turkeys gradually constrict their range to lower elevations. Where agriculture predominates, a mosaic of short grass fields or cropland and forest is generally the best place to find turkeys." In the Columbia River Gorge counties your best bets are to hunt below 1500 feet. According to WDFW biologists, The Klickitat and White Salmon river drainages are good places to look for flocks. The Klickitat Wildlife Area is a good public land bet and the Simcoe Mountains north and west of Goldendale also offer opportunities. Most of this area is owned by private timber companies so you'll have to secure permission or a permit to hunt here and on other private lands. As for cooking that wild turkey you harvest this fall? Hank Shaw, author of the wild game cookbook, "Pheasant, Quail, Cottontail" has some good advice:

1. That old tom will have tough meat, consider shooting a hen or jake instead.
2. If you shoot a hen or a jake you can cook it just like a domestic turkey, to include roasting it like you would for the holidays.
3. If you roast the turkey, roast it upside down so the juices flow into the breast meat.
4. As for how long? Ten minutes per pound is a good rule to follow.

John Kruse - www.northwesternoutdoors.com and www.americasoutdoorsradio.com



Don't forget to renew your subscriptions this summer!

Wenatchee Business Journal
Serving the North Central Washington Business Community for over 40 years!

- Business News - BNCW News
- Keeping Up With People
- Top Properties - Business Opinions

There's something for everyone in the local newspaper

- Local news
- Local school news
- Local sports
- Local arts & entertainment
- Opinion & editorials
- Meeting notices
- Event notices
- Public & legal notices
- Outdoor activities
- Health tips
- Online Access for all newspapers
- Breaking News

Not a subscriber? Call today to get your subscription started

Wenatchee Business Journal Subscription Rates for 12 months

\$24 1 year \$35 2 years - Chelan & Douglas Counties

\$28 1 year Outside Chelan/Douglas \$48 1 year Out of State

Community newspaper Subscription rates:

Print and Premium on-line access - **\$45 per year**

RECORD ECHO HERALD MIRROR

Print only - **\$40 per year**

RECORD ECHO HERALD MIRROR

On-line only - **\$40** - includes E-edition of paper exactly as printed

RECORD ECHO HERALD MIRROR

Print only out of state - **\$52 per year**

RECORD ECHO HERALD MIRROR

Out of state Premium/E-Edition on-line - **\$40 per year**

Name of person ordering: _____

Address: _____

Email: _____ Phone: _____

Send gift subscription to: _____

Address: _____

Email: _____ Phone: _____

Payment information (pay by credit card or check):

Credit Card number: _____

Exp: _____ Visa Mastercard Discover AMEX

MAIL TO:
NCW Media Inc.,
Attn: Circulation
PO Box 249
Chelan, WA 98816
OR CALL with your Card #
509-293-6780
FAX: 509-682-4209
EMAIL: circulation@lakechelanmirror.com

Paying by check? Check enclosed:

October is Breast Cancer Awareness Month

Are you a survivor? From 1 day to many years

On Oct. 7 we will publish our feature page of survivors, in our Breast Cancer Awareness Special Section, to help encourage the newly diagnosed.

There is life after cancer.

For additional information please contact Carol at 548-5286, ext. 6513 or carol@leavenworthecho.com

To be included on the feature pages, fill out the form below or pick one up at the Echo office. Mail your form or drop it off by **Wed, Sept. 30**

THE LEAVENWORTH ECHO & CASHMERE VALLEY RECORD
215 14th Street - PO Box 39 • Leavenworth, WA. 98826

Please print information about yourself in the form below. Then submit the form, with your **PHOTO**, to The Leavenworth Echo office

NAME: _____

ADDRESS: _____

TELEPHONE: _____ CELL: _____

EMAIL: _____

DAYS, MONTHS, YEARS AS A SURVIVOR: _____

OCCUPATION: _____

I HAVE APPROVED BY SIGNATURE TO HAVE THIS INFORMATION PUBLISHED ON THE ABOVE DESCRIBED FEATURE PAGE MADE BY NCW MEDIA, INC. - THE LEAVENWORTH ECHO/CASHMERE VALLEY RECORD.

SIGNED: _____ DATE: _____

Please submit this form by **Wed., Sept. 30**
Submit your photo to Carol@leavenworthecho.com

NCW MARKET.COM
CLASSIFIED ADS

WENATCHEE BUSINESS JOURNAL
LEAVENWORTH ECHO
CASHMERE VALLEY RECORD
LAKE CHELAN MIRROR
QUAD CITY HERALD

Place your ad online at NCWMARKET.COM or call 509-548-5286 - Leavenworth Echo/Cashmere Valley Record
509-682-2213 - Lake Chelan Mirror • 509-689-2507 - Quad City Herald

CLASSIFIEDS

PUBLISHER'S NOTICE

All real estate advertising in this newspaper is subject to the Fair Housing Act, which makes it illegal to advertise "any preference, limitation or discrimination based on race, color, religion, sex, handicap, familial status or national origin, or an intention to make any such preference, limitation or discrimination." This newspaper will not knowingly accept any advertising for real estate that is in violation of the law. To complain of discrimination call HUD at 1-800-669-9777. The number for hearing impaired is 1-800-927-9275.

ANGST LIS COPT
NOONE URL LETON
KNOUT LEU IDIOT
HOFBRAU MUNICH
SAP APSE
LSD DAHL ENCAMP
EPOS CORM SAVOR
DUMA EPEES VETO
EMEND SAGO ARTS
REDSEA DANA TOT
SHAY ADS
OOMP AH PRETZEL
IGLOO ERR PEEVE
VELDT ANI TIRES
YEAS DAM SNORT

Happy Ads

HAVE A SPECIAL EVENT COMING UP? PLACE IT IN OUR CLASSIFIEDS IN THE PAPER AND ONLINE

24/7 at www.NCWMarket.com

CORRECTIONS: NCW Media Inc. shall be responsible for corrections to advertisements on the first publication only. The advertiser will be responsible for corrections made thereafter. NCW Media Inc. shall not be responsible for slight changes or typographical errors that do not lessen the value of the advertisement. NCW Media Inc.'s liability for other errors or omissions in connection with an advertisement is strictly limited to the publication of the advertisement in any subsequent issue. No monetary refunds will be given. For more information call (509) 548-5286.

Announcements

Lost & Found

LOST AND FOUND can be placed in our local newspaper and online for **ONE week for FREE.** Limit 30 words

Leavenworth/Cashmere 509-548-5286
or
Lake Chelan Mirror 509-682-2213
or
Quad City Herald 509-689-2507

Deadline is Noon on Friday

NCW MEDIA
Bringing the community to your door

Administrative

Puzzle Solution

3	2	1	9	4	6	8	7	5
7	9	4	1	5	8	6	3	2
8	5	6	7	2	3	4	9	1
1	6	9	3	8	7	2	5	4
2	7	5	6	1	4	9	8	3
4	8	3	5	9	2	1	6	7
6	3	8	4	7	1	5	2	9
9	4	2	8	3	5	7	1	6
5	1	7	2	6	9	3	4	8

Advertise Advertise Advertise Advertise Advertise Advertise

548-5286 or 782-3781
YOU WILL Call Now!

HAPPY BIRTHDAY

CONGRATULATIONS!

WILL YOU MARRY ME?

HAPPY ANNIVERSARY
Only \$15 for 30 days includes 3 photos

Chelan-Brewster 682-2213 or Leavenworth-Cashmere 548-5286

Please help Almond Blossom Roasted Nuts support Leavenworth Reindeer Farm during their 2nd COVID mandated shutdown! Save \$1 per item using code FARM at check out AND we will donate 25% of your purchase to help keep them operating!
www.ShopAlmondBlossom.com
See our Facebook page (facebook.com/almondblossomnuts) for restrictions.

Employment

Help Wanted

CASCADE SCHOOL DISTRICT

The Cascade School District is seeking qualified applicants for the following position:

Cascade High School Girls Assistant Soccer Coach

Fast Track application process and information can be found on our website at: www.cascadesd.org EOE

Housekeeping position available part-time. Monday - Friday starting at 11 am. Located near UV Christian School Becki, 509-679-1904

Part time office help approximately 6 hours, 3 days per week in Leavenworth. Call Mary, 509-548-9088 or 509-741-2525.

Windermere REAL ESTATE

Windermere Real Estate/NCW Leavenworth/Lake Wenatchee Specialists

Looking for real estate in the Upper Valley?
Give us a call today!

Carmen Bagdon - 237-2060
Momi Palmieri - 433-2211
Geordie Romer - 679-8958
Allyson Romer - 630-9898

See all available properties at windermereleavenworth.com

Employment

Help Wanted

Find the Best Qualified Local Employee in our Classifieds Ads.

Place your ad online 24/7 at www.NCWMarket.com It is easy, just register and pay online.

Print only? Deadline is Monday by Noon for all papers:

Lake Chelan Mirror 683-2213
Quad City Herald 683-2213
Leavenworth Echo 548-5286
Cashmere Record 548-5286

Your ad will appear online and in the newspapers for one low price!

Full and Part-time Bedmaker, Laundry and Housekeeping

The Enzian Inn is hiring for full and part-time Housekeeping, Laundry, Bedmakers. Enjoy a competitive wage and positive working environment. Shifts typically begin at 9 a.m. and end between 2- 4 p.m. daily. Hotel amenities such as fitness room, indoor pool and jacuzzi are available to employees and their immediate family to enjoy in the winter months. Apply in person Enzian Inn 590 US Hwy. 2 Leavenworth

Employment

Help Wanted

Full and Part-Time Breakfast Catering Staff The Enzian Inn is searching for energetic service oriented individuals to join our breakfast/ catering team. Position provides opportunities to learn and perform a variety of duties. Prepare, present and serve the daily breakfast buffet and at catered functions. Full and part-time positions requiring some weekends. Recreational amenities of hotel are available to employees including fitness center, indoor/ outdoor pool, spa and putting course. Apply in person. 590 Hwy. 2 Leavenworth

Vacasa needs Runners in Chelan, Washington! Looking for our next rockstar to help create lasting vacation memories! Reliable transportation in the snow and weekend availability is a must! This role pays \$19/ hour from 6/28/20 to 9/20/20, will revert to \$15/ hour after this period; PTO, health/dental/vision insurances available based on hours worked, 401k with 6% match and other discounts! Apply online at www.vacasa.com/careers or text Vacasa 97211

Employment

Help Wanted

Code Enforcement Officer for Parking and Development Services

The City of Leavenworth, an equal opportunity employer, is accepting application for a Code Enforcement Officer for Parking and Development Services. This position is a union covered position and will be Thursday through Monday with a starting pay of \$4,631-\$5,063/ Month.

Requirements: Minimum 18 years of age and WA State driver's license with record acceptable to the City; position will require a pre-employment physical evaluation. Individual must be able to work weekends and holidays. Seeking an individual that will support and assist the City of Leavenworth with traffic control and development enforcement services. This position performs a variety of code enforcement duties with a main focus on directing vehicle and pedestrian traffic, enforcing City parking ordinances and parking related state statutes; coordinating assigned activities with other city departments and outside agencies, and performing related work as required.

Please review the full job description and application requirements on the City's website: <https://cityofleavenworth.com/employment-opportunities/>

or request information by contacting us at (509)548-5275. Due to COVID-19: phone hours 9:00 AM - 1:00 PM; office visit by appointment only.

First review of applications will be on 09/30/2020. Position will remain open until filled.

SUDOKU PUZZLE

FREE! Upgrade to the American Standard Right Height Toilet FREE! \$600 Value

WALK-IN BATH TUB SALE! SAVE \$1,500

Backed by American Standard's 140 years of experience
Ultra low entry for easy entering & exiting
Patented Quick Drain™ Technology
Lifetime Warranty on the bath AND installation, INCLUDING labor backed by American Standard
44 Hydrotherapy jets for an invigorating massage

Limited Time Offer! Call Today!
866-612-7490
Or visit: www.walkintubinfo.com/epm

© StatePoint Media
Fill in the blank squares in the grid, making sure that every row, column and 3-by-3 box includes all digits 1 through 9.

CROSSWORD PUZZLE

THEME: OKTOBERFEST

ACROSS
1. Worry
6. Fleur-de-
9. One of Egyptian christians
13. Nary a soul
14. Dot-com address
15. Pretend, two words
16. Flogger's tool
17. Romanian money
18. Dostoyevsky's masterpiece, with The
19. *Royal Brewery in Munich, a.k.a. ____ M.nchen
21. *Original Oktoberfest location
23. Tree juice
24. Cathedral part
25. Lysergic acid derivative, acr.
28. Children's author Roald
30. Bivouac
35. Heroic poem
37. Taro or cocoyam, technically
39. Relish tastebuds' sensation
40. Russian governmental agency
41. Musketeers' weapons
43. Presidential "No!"
44. Make corrections
46. Kind of palm
47. A in B.A.
48. Indian Ocean's saltwater inlet
50. Carvey or Plato
52. "Sesame Street" watcher
53. One-horse carriage
55. Sunday newspaper inserts
57. *Kind of Oktoberfest band
60. *Salty snack
64. Melttable abode
65. Go wrong
67. Sore spot
68. African prairie
69. "Wheel of Fortune" vowel request
70. All-season ones, on a car
71. Affirmatives
72. Beaver's construction
73. Noise of contempt

DOWN
1. Egyptian hieroglyph for "life"
2. "You're not allowed!" to a baby
3. Mistake
4. Spurns
5. Between triad and pentad
6. Comic strip Moppet
7. Anger management issue
8. Economic crisis
9. Ghana monetary unit
10. Ear-related
11. Tubby little cubby
12. Ted Turner's TV acronym
15. Bedding and towels
20. Lickety-split
22. Wear and tear
24. "So soon?"
25. * ____ hosen
26. Sea foam
27. Like United States Capitol
29. *Flower used in beer-making
31. Spanish sparkling wine
32. Deflect
33. "O'zapft is!" or "It's tapped!"
34. "Cheers!"
36. Without, † Paris
38. Start of something big?
42. Echo sounder
45. Joseph Stalin was one
49. "Eureka!"
51. Experts
54. In the lead
56. *Beer garden mug
57. Curved molding
58. Paella pot
59. '60s British teenagers
60. "Hunger Games" sister
61. Goose egg
62. Second to last word in a fairytale
63. Just in case
64. Woody creeper
66. Biochemistry acr.

CLEAR IT OUT!

Are your basement, attic, garage and closets overflowing with stuff? Get rid of the clutter by advertising your items in the Classifieds.

• Place your ad 24/7 at ncwmarket.com
• Email: classifieds@leavenworthecho.com
• Call 548-5286

OMAHA STEAKS

GET THE GRILLER'S BUNDLE INTRODUCTORY PRICE: \$79⁹⁹

- 4 (5 oz.) Butcher's Cut Filet Mignon
- 4 (4 oz.) Boneless Pork Chops
- 4 (4 oz.) Omaha Steaks Burgers
- 4 (3 oz.) Gourmet Jumbo Franks
- 4 (2.8 oz.) Potatoes au Gratin
- 4 (4 oz.) Caramel Apple Tartlets

OMAHA STEAKS Seasoning Packet \$2.94/99* separately

4 + MORE BURGERS FREE THAT'S 20 COURSES + SIDES + DESSERT!

ORDER NOW! 1.833.406.1259 ask for 63281KXJ
www.OmahaSteaks.com/family588

© StatePoint Media

For Sale

Antiques & Collectibles

Get cold hard cash for your Antiques and Collectibles by placing them in our classifieds.
Place your ad with pictures online 24/7 at NCWMarket.com Just register and pay online and you are done. Your ad will appear online and in the newspaper for one low price.

Deadline Monday at Noon for all papers:

Lake Chelan Mirror
Quad City Herald
682-2213
or call
Leavenworth Echo
Cashmere Record
548-5286

Furniture

NCW Media Newspapers Cashmere
Office furniture available. Items: 2 large wood desks with side desk attachment, One metal desk, one large wood conference table, a large counter approx. 7' x 3 1/2' tall with removable shelves, A wood credenza All other items are now only \$10 cash and carry out. Call to arrange a time to examine or pick up. All items located in Cashmere. For information call Leavenworth Echo, 548-5286 or Bill, at 509-670-1837. Also see photos on NCWMarket.com

Garage & Yard Sale

Estate sale with lots of high end furniture, this Saturday, Sept. 26, 9 a.m. to 4 p.m., 15838 South Lakeshore Road, Chelan. Masks required.

Real Estate

Homes for Sale

Leavenworth Condo with all furnishings for sale. 975 sq. ft., 1 bedroom, 1 1/2 bath plus 1 car garage. Located 1 block from Festhalle. For residential living only. HOA Rules, prevents rentals. Ideal for seniors/retirees. Owner will be available for showing September 9-16th. Call Mary or Roy for appointment at 360-531-2154. \$340,000.



Upgrading your 'ride'? we can help you sell your old one

• Place your ad 24/7 at ncwmarket.com
• Email: classifieds@leavenworthecho.com
• Call 548-5286

Orchards & Farms

WASHINGTON BROKERS

We have buyers for your Pear, Apple and Cherry Orchards!
509-669-4500
information@nwi.net

Rentals

Newly remodeled 1.5 Bedroom Rental in Ponderosa Estates. Prefer yearly lease, \$1,050 per month. No smokers or pets. Call 509-881-8979

Room for rent in Leavenworth on bus line, all utilities plus WiFi. No pets please. \$650/month. 509-699-9337.

Wanted to Rent

Chelan County Hospital District No. 2 is seeking the following leased space:
Medical Office space; Approximate Square Footage (SF) 1,000 Area: within the boundaries of Chelan County Hospital District No. 2 Information for interested parties is posted on the Lake Chelan Community Hospitals' website at <https://lakechelancommunityhospital.com/lake-chelan-clinic/>

Legals

Public Notices

SUPERIOR COURT OF WASHINGTON IN AND FOR CHELAN COUNTY

In the Matter of the Estate of **JESSIE W. BATEY**, Deceased. NO. 20-4-00240-04

PROBATE NOTICE TO CREDITORS

The Administrator named below has been appointed as Administrator of this estate. Any person having a claim against the decedent must, before the time the claim would be barred by any otherwise applicable statute of limitations, present the claim in the manner as provided in RCW 11.40.070 by serving on or mailing to the Administrator or the Administrator's attorney at the address stated below a copy of the claim and filing the original of the claim with the court in which the probate proceedings were commenced. The claim must be presented within the later of: (1) Thirty days after the Administrator served or mailed the notice to the creditor as provided under RCW 11.40.020(1)(c); or (2) four months after the date of first publication of the notice. If the claim is not presented within this time frame, the claim is forever barred, except as otherwise provided in RCW 11.40.051 and 11.40.060. This bar is effective as to claims against both the decedent's probate and nonprobate assets.

DATE OF FIRST PUBLICATION: September 23, 2020

ADMINISTRATOR: Doug Batey

ATTORNEY FOR ADMINISTRATOR: David Visser

ADDRESS FOR MAILING OR SERVICE: OVERCAST LAW OFFICES 23 South Wenatchee Avenue Suite 320 Wenatchee, WA 98801

COURT OF PROBATE PROCEEDINGS AND CAUSE NUMBER: Chelan County Superior Court, No. 20-4-00240-04 OVERCAST LAW OFFICES By: David Visser, WSBA No. 41546 Attorney for Administrator Published in The Leavenworth Echo/ Cashmere Valley Record on September 23, 30 and October 7, 2020. #843

Public Notices

CITY OF CASHMERE NOTICE OF DEVELOPMENT APPLICATION SHORT PLAT-SP2020-002CA
Name of Applicant: Raymond Schmitt
Application Number: SP2020-002 CA
Date of Application: September 14, 2020
Date Notice of Application Issued: Wednesday, September 23, 2020
Description of Proposal and Project Permits: The applicant, Ray Schmitt, is proposing a short subdivision to divide approximately 669,953 sq. ft. into four (4) lots. Lot "1" will be approximately 156,237 sq. ft. in size, Lot "2" will be approximately 309,900 sq. ft. in size, Lot "3" will be approximately 76,697 sq. ft. in size and Lot "4" will be approximately 129,209 sq. ft. in size. The property is located at 5304 Old Monitor Rd, Cashmere, WA in Chelan County, Washington. The Chelan County Assessor's Parcel # is 23-19-03-330-010; T 23N R 19EWM S 03 LOT B BLA 2005-129CA TOGETHER WITH QUIET TITLE LOT 2 BLA 2005-125CA 15.3800 ACRES

Requested Approvals, Actions and/or Required Studies: Approval of a short subdivision.

Other Permits Not Included, To the Extent Known: None

Existing Environmental Documents and Where They Can Be Reviewed: Pursuant to Section 18.04.110 this project is exempt from the environmental checklist review process.

Statement of Public Comment Period: The 14-day comment period commences on Wednesday, September 23, 2020 and lasts through Wednesday, September 30, 2020. Any interested person/party has the right to comment on the proposal, request a copy of the decision once it is made, and may appeal the decision subject to the requirements of the CMC Title 14.11.010, Appeal of Administrative Interpretations and Approvals.

Statement of Preliminary Determination: The development regulations that will be used for the project mitigation and to provide consistency with the type of land use for the proposed site, are outlined in Titles 15, 16, 17 and 18.

Statement of Decision Timeline: A decision on this application will be made within 120 days after issuance of the letter of completeness, pursuant to RCW 36.70B and the CMC Title 14 Development Code Administration.

City Contact Person: For further information about this project, please contact Tammy Miller, at City Hall, 101 Woodring Street, Cashmere, WA 98815, or by calling 782-3513. Published in The Cashmere Valley Record/ Leavenworth Echo on September 23, 2020. #863

Public Notices

CITY OF CASHMERE SUMMARY OF ORDINANCE NO. 1293

On the 14 day of September, 2020 the City Council of the City of Cashmere, Washington passed Ordinance No. 1293. A summary of the content provides as follows: AN ORDINANCE OF THE CITY COUNCIL OF THE CITY OF CASHMERE, WASHINGTON, AMENDING SECTION 2.02.010 OF THE CASHMERE MUNICIPAL CODE; AMENDING CITY OFFICE HOURS. Effective date of this ordinance is five days after publication. A copy of the full text of this ordinance is available at Cashmere City Hall or will be mailed to you upon your request to Kay Jones, City Clerk-Treasurer, City of Cashmere, 101 Woodring Street, Cashmere, WA 98815. Published in The Cashmere Valley Record/ Leavenworth Echo on September 23, 2020. #856

Public Notices

IN THE SUPERIOR COURT OF THE STATE OF WASHINGTON IN AND FOR THE COUNTY OF SPOKANE

In the Matter of the Estate of: **ANDREW D. HASTINGS**, Deceased.
NO. 20401345-32
PROBATE NOTICE TO CREDITORS (RCW 11.40.030) (NCRD)
The person named below has been appointed as Administrator of this Estate. Any person having a claim against the Decedent must, before the time the claim would be barred by any otherwise applicable statute of limitations, present the claim in the manner as provided in RCW 11.40.070 by serving on or mailing to the Administrator or the Administrator's attorney at the address stated below a copy of the claim and filing the original of the claim with the court in which the probate proceedings were commenced. The claim must be presented within the later of: (1) Thirty days after the Administrator served or mailed the notice to the creditor as provided under RCW 11.40.020(1)(c); or (2) four months after the date of first publication of the notice. If the claim is not presented within this time frame, the claim is forever barred, except as otherwise provided in RCW 11.40.051 and 11.40.060. This bar is effective as to claims against both the decedent's probate and nonprobate assets.
ASHLEY SPRING Administrator
DANIELLE PALM, WSBA #56332
Address for Mailing or Service: Danielle Palm Estates and Elders Law PLLC 23403 E. Mission Avenue Suite 113 Liberty Lake, WA 99019 509.252.5003
Published in The Leavenworth Echo/ Cashmere Valley Record on September 23, 30 and October 7, 2020. #851

Public Notices

IN THE SUPERIOR COURT OF THE STATE OF WASHINGTON FOR KING COUNTY

Estate of **JAMES PAUL ZAPKE**, Deceased.
NO. 20-4-05436-1 SEA
PROBATE NOTICE TO CREDITORS
RCW 11.40.030

The personal representative named below has been appointed as personal representative of this estate. Any person having a claim against the decedent must, before the time the claim would be barred by any otherwise applicable statute of limitations, present the claim in the manner as provided in RCW 11.40.070 by serving on or mailing to the personal representative or the personal representative's attorney at the address stated below a copy of the claim and filing the original of the claim with the Court. The claim must be presented within the later of: (1) Thirty days after the personal representative served or mailed the notice to the creditor as provided under RCW 11.40.020(1)(c); or (2) four months after the date of first publication of the notice. If the claim is not presented within this time frame, the claim is forever barred, except as otherwise provided in Section 11 of this act and RCW 11.40.060. This bar is effective as to claims against both the decedent's probate and non-probate assets.

Date of First Publication September 23, 2020

DAYNA PAPADAKIS, Personal Representative
Attorney for Personal Representative: Yvette O'Connell
Address for Mailing or Service: 7801 Green Lake Dr. N. Seattle, WA 98103
Published in The Leavenworth Echo/ Cashmere Valley Record on September 23, 30, and October 7, 2020. #862

Public Notices

IN THE SUPERIOR COURT OF THE STATE OF WASHINGTON COUNTY OF CHELAN IN PROBATE

In the Matter of the Estate of **PAULINE E. HALVERSON**, Deceased.

In the Matter of the Estate of **GENE L. HALVERSON, SR.**, Deceased.

NO. 20-4-00281-04
PROBATE NOTICE TO CREDITORS (RCW 11.40.030)

The Personal Representative named below has been appointed as Personal Representative of these estates. Any person having a claim against the decedents must, before the time the claim would be barred by any otherwise applicable statute of limitations, present the claim in the manner as provided in RCW 11.40.070 by serving on or mailing to the Personal Representative or the Personal Representative's attorney at the address stated below a copy of the claim and filing the original of the claim with the court. The claim must be presented within the later of: (1) thirty days after the Personal Representative served or mailed the notice to the creditor as provided under RCW 11.40.020; or (2) four months after the date of first publication of the notice. If the claim is not presented within this time frame, the claim is forever barred, except as otherwise provided in RCW 11.40.051 and 11.40.060. This bar is effective as to claims against both the decedents' probate and nonprobate assets.

DATE OF FIRST PUBLICATION: September 23, 2020

By **GENE L. HALVERSON, JR.** Personal Representative
Address: 4182 Chelan Hwy. Wenatchee, WA 98801

Attorneys for Personal Representative: **JEFFERS, DANIELSON, SONN & AYLWARD, P.S.**

By **TODD M. KIESZ**, WSBA # 25975
2600 Chester Kimm Road Wenatchee, WA 98801 P. O. Box 1688 Wenatchee, WA 98807-1688

CHELAN COUNTY CLERK'S OFFICE
Ms. Kim Morrison, Clerk Chelan County Superior Court Chelan County Law & Justice Facility
350 Orondo Avenue, Suite 501 Wenatchee, WA 98801-2885
Published in The Cashmere Valley Record/ The Leavenworth Echo on September 23, 30, and October 7, 2020. #859

Junk today. Treasure tomorrow.

Need some **CASH?**

Place a For Sale ad and turn your 'junk' into someone else's treasure!

• Place your ad 24/7 at ncwmarket.com
• Email: classifieds@leavenworthecho.com
• Call 548-5286

Have spare room in your facility?

Advertise on

STORAGE
NCWMarketing.com

Place your Help Wanted and find the best qualified local employee

• Place your ad 24/7 at ncwmarket.com
• Email: classifieds@leavenworthecho.com
• Call 548-5286



CASHMERE: 130 Titchenal Way



Order Online – Curbside Pickup

www.igamarketfresh.com



310 2nd Avenue South

During this COVID-19 crisis, our team is working hard to keep our store clean and well-stocked for you. If we are out of advertised items, please accept our apologies. If you have any questions, please don't hesitate ask us. We are here to serve you to the very best of our ability.

Effective: September 23–29, 2020

PREMIUM BEEF
BONELESS BEEF
PETITE SIRLOIN
STEAK
VALUE PACK

3.98
LB.



LOCAL Equals FRESH

Local stores supporting local products.



In Our Deli

Beecher's Handmade Cheeses. Authentic, Original and Full of Flavor!



Fresh Cheese Curds
Fresh curds that are perfect for anytime snacking. A local favorite! Selected Varieties 5 Oz.

5.48
EA.



Just Jack or Marco Polo Sliced Cheese 7 Oz.

9.98
EA.



Flagship Cheese Sticks 8 Pack

10.98
EA.



Deli Cuts Cheddar Cheeses Selected Varieties 7 Oz.

6.98
EA.



Landjaeger Snack Sticks Old world style Landjaeger made in Pike's Place Market at Bavarian Meats. Selected Varieties 3.2 Oz.

5.48
EA.

Easy as 1,2,3! Look for Tags on the Shelf!
SHOP. BUY. SAVE.

1 FREE
8 Pack AHA Sparkling Water Selected Varieties, 12 Oz. Cans when you buy any (2) 6 Pack Coke Products Selected Varieties, 16.9 Oz. Bottles
Offer valid September 23–29

\$1 OFF
when you buy any (2) Hershey's Baking Chips Selected Varieties, 8 to 12 Oz.
Offer valid September 23–29

\$1 OFF
when you buy any (2) Nabisco Ritz Crackers or Ritz Crisp & Thins Selected Varieties, 7.1 to 13.7 Oz.
Offer valid September 23–29

\$1 OFF
when you buy any (2) Coke Products Mini Cans 6, 8 or 10 Pack, 7.5 Oz. Cans
Offer valid September 23–29

FIND MORE Savings!
Scan here to see MORE offers.

mix & match
EARN UP TO \$50 IN GIFT CARDS when you buy 10 or more items.

BUY \$30 OF UNILEVER PRODUCTS AT PARTICIPATING STORES.

SNAP \$10 OFF FOOD PURCHASES ON SNAP. REWARDS APP.

EARN A \$10 GIFT CARD OF YOUR CHOICE.

TEXT "UNILEVER" TO 467-467 TO DOWNLOAD THE FREE FETCH REWARDS APP TO START EARNING.

Offer valid September 1–October 3, 2020. Offer valid in the U.S. only and open to legal U.S. residents 18 and older. Must download the Fetch Rewards App, create a user account, and agree to Fetch Rewards' Terms and Conditions to participate. Limits and restrictions apply. See www.unilever.com for full offer details, participating restrictions, participating retailers and terms and conditions.

Coconut Cream Pie
Locally baked-always a favorite! 42 Oz.

9.98
EA.

In Our Bakery



Jumbo Gourmet Muffins
Locally Baked, Great for Breakfast or a Snack, 6 Count

8.98
EA.

Chuckanut Bay Foods
Cheesecake Bites
Decadently delicious cheesecake bites in your favorite flavors. Selected Varieties, 8 Count, 6.4 Oz.

6.48
EA.

Fresh Produce

LOCAL BARTLETT PEARS
SWEET, JUICY
68¢
LB.

LOCAL 5 LB. BAG RUSSET POTATOES
FULL OF VITAMINS & MINERALS
1.48
EA.

LOCAL CELERY
A GREAT SOURCE OF ANTIOXIDANTS
BUNCH
88¢
EA.

LOCAL GALA APPLES
CRISP, SWEET
68¢
LB.

Tillamook Shredded Cheese
Selected Varieties 8 Oz.

2/\$5



Franz Breakfast Bread
Selected Varieties 20 Oz.

2/\$7



Yami Lactose Free Yogurt
Selected Varieties 6 Oz.

5/\$3



Naturally Omega Large Eggs
Dozen

2.48



Wild Mike's Pizza
Selected Varieties 18 to 38.8 Oz.

5.98



Tillamook Cream Cheese
Selected Varieties 7 Oz.

2/\$6



Theo Chocolate Bars
Selected Varieties 3 Oz.

2/\$6



Stash Tea
Selected Varieties 18 to 20 Count

2/\$7

