

Seven cases of COVID-19 in two county area

COMPILED BY LAKE CHELAN MIRROR STAFF

CHELAN - In a joint news release from Chelan-Douglas Health District (CDHD) and Confluence Health the Health District on March 17 announced the first two positive test results for COVID-19 in Chelan County. CDHD staff is working closely with these individuals to identify any close contacts and the individuals are self-isolated. One is from Chelan and the other from Leavenworth.

Then on March 20 Health District announced a third lab-confirmed case of the virus in Chelan County.

On Monday, March 23, CDHD announced that there were four additional lab-confirmed cases over the weekend.

Chelan County now has six positive cases, and Douglas County one. As of press time it has not been confirmed what towns the additional cases are in.

CDHD and Confluence Health in their press release said they "continue to urge the public to stay at home as much as possible. Social distancing is essential to slow the virus spread. We cannot afford to continue overwhelming our hospitals and clinics by spreading the virus any faster. Our healthcare system relies heavily on this measure to keep up with ongoing demand. Please do not show up to a healthcare facility unannounced. Instead, call your healthcare provider or the Confluence hotline at 509-663-8711 to determine your

SEE COVID19 ON PAGE 3

It takes 2 villages



RuthEdna Keys/LCM

Chamber ceases all spring campaigns

SUBMITTED BY MIKE STEELE, LAKE CHELAN CHAMBER OF COMMERCE EXECUTIVE DIRECTOR

CHELAN - The Lake Chelan Chamber of Commerce has had several inquiries over the weekend regarding visitors to our valley. Our organization is committed to supporting businesses, promoting the Lake Chelan Valley and building community when appropriate. These are uncertain times and we must all do our part to responsibly navigate COVID-19. The Lake Chelan Chamber of Commerce is not promoting our destination to visitors. We have ceased all spring campaigns and

promotions. In addition our county wide effort, Washington's Playground has worked with our media partner King 5 to postpone the Best of the Northwest Escapes campaign until further notice.

We know these are unsettling and difficult times for our small businesses, but we are asking our members, media partners and all valley businesses to work with us and do as much as we can to prevent the spread of this virus, this includes social distancing and appropriately and responsibly conducting business practices, that may for a time, mean not inviting guests to our valley.

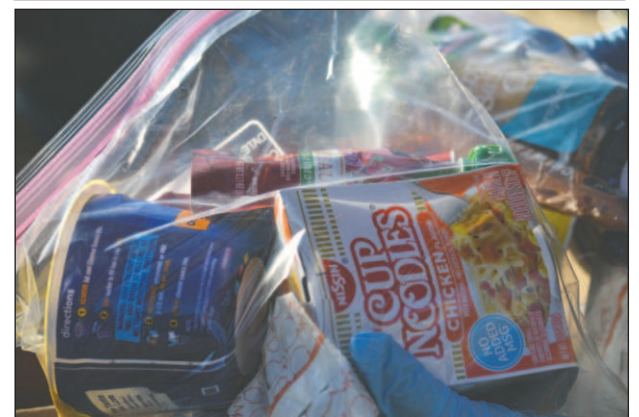
ABOVE: Tim Cote, a Thrive Mentor and assistant wrestling coach for Chelan High School hands out meals on Friday, March 20, at Chelan High School. **RIGHT:** Harper Helleson (left) and Kevin Martin, part of the Thrive Cares team at the Manson meal giveaway on March 20. **BOTTOM RIGHT:** One of the bags of food given away Friday afternoon.

COMPILED BY LAKE CHELAN MIRROR STAFF

CHELAN - MANSON - Thrive Chelan Valley is offering weekend food support in Chelan and Manson, via their established Food2Schools program, for school-aged (PK-12 Grade) students during the temporary school closures. They gave away meals until their supplies ran out, which was 328 between the Manson and Chelan sites combined. The Cares Team developed a plan to provide drive-through weekend food support to families of registered Chelan and Manson students on Friday evenings. All

Lake Chelan School District and Manson School District are handing out Breakfast and Lunch Monday-Friday See page 2

of the folks handing out Food2Schools bags are volunteering for Thrive as part of their Cares team and team members wear multiple hats (school personnel, mentors, coaches, etc). They have raised \$3,700 towards their initial goal is \$6,600 which will help support weekend meals from now through the initial school closures of April 24. If schools are closed for longer, they may need to adjust that goal to continue meeting the needs of the Chelan and Manson youth. Thrive Chelan Valley is a local 501(c)(3) non-profit dedicated to ensuring that all youth in the Lake Chelan



valley have everything they need to reach their full potential. To make a donation by mail send it to: Thrive Chelan Valley, PO Box 3051, Chelan, WA 98816. More photos at lakechelanmirror.com

City of Chelan, county commission declare State of Emergency

COMPILED BY LAKE CHELAN MIRROR STAFF

CHELAN - The Chelan City Council met in special session on March 16 to participate in a Covid-19 Webinar sponsored by the Municipal Research and Services Center (MRSC). The following day Mayor Bob Goedde declared an emergency, due to the imminent spread of COVID-19 Pandemic in the City of Chelan. This in part allows Wade Farris, Chelan City Administrator to request all available state and federal assistance to respond to this emergency.

City of Chelan Offices are closed to person to person contact:

Cash payments will be accepted through their payment window. You

See page 2 for more COVID-19 closures

can pay your utility bill online at cityofchelan.us. In addition, you may also pay your utility bill by phone through Point & Pay by calling 1-866-706-6609. There are drop boxes conveniently located in front of City Hall and in the alley behind City Hall. Utility Direct Payment Program is available at no charge to the customer. Call 682-4037 to set this up.

Planning and Building asks that the public call or email. 509-682-8017 Parks Department trans-

SEE CLOSURES ON PAGE 3

Manson school superintendent Matt Charlton accepts position with Eastmont School District

COMPILED BY LAKE CHELAN MIRROR STAFF

MANSON - Matt Charlton, Superintendent for the Manson School District has accepted a position with the Eastmont School District as their

Executive Director of Secondary Education. The position is scheduled to begin July 1. The Eastmont School District will work with the Manson School District on this transition, giving them flexibility on timeline to

insure leadership is in place, given the current uncertain times.

His wife Shelley, who works for the Lake Chelan School District has accepted a teaching position with the Eastmont School District.

Charlton graduated from Eastmont High School and they have parents, siblings and a son in the Wenatchee area.

Go to lakechelanmirror.com for Charlton's letter to Manson families and the community.

US 97A-SR 971 rock slope - scaling begins April 1, road closures begin April 6

SUBMITTED BY DEPT. OF TRANSPORTATION

CHELAN - Project news: This project was awarded to Strider Construction on Jan. 14, 2020 for \$660,265.20. Project work begins April 1 and road closures begin April 6.

An open house for this project was held on August 14, 2019 at the Chelan City Hall and the Entiat Grange Hall on August 20. The purpose of the outreach events was to receive input regarding travelling needs on US 97A and SR 971, and how different closure

times required to complete the work will affect the public.

Needs and benefits: Slope instability is a category of natural hazard that refers to the movement of a soil or rock mass under the influence of gravity, leading to slides and falling rocks.

Rock falls can occur on both natural and excavated slopes and are caused by a combination of influences, including weather. WSDOT's unstable slope management program is a proactive infrastructure-preservation program.

SEE ROCK ON PAGE 2



Need to Place an Ad? Looking for a job? NCWMarket.com
Our Classified Ad Dept is open 24/7

NCW MARKET.COM CLASSIFIED ADS
Your one stop spot to reach all of North Central Washington with a few Simple keystrokes.

THE LEWISTON **ECHO** THE GRANGEVILLE **RECORD** THE CHELAN **MIRROR** THE ENTIAT **HERALD**

INSIDE THIS WEEK

Community & Schools 1-4	Classified Index	Inserts
Church News 4	Classifieds, Puzzles 5-6	Safeway
Obituaries/Death Notices 4	Public Notices 5-6	
Bulletin Board 4	Business & Services,	
Schools 1-2	Health Care Directory 3	

8 08805 93176 1 \$1

310 E. Johnson Ave.,
P.O. Box 249
Chelan, WA 98816-0249
509-682-2213
www.lakechelanmirror.com



© NCW Media Inc. 2020
310 E. Johnson Ave., P.O. Box 249
Chelan, WA 98816-0249
Phone: (509) 682-2213
Fax (509) 682-4209

Office Hours
Mon. to Fri. 9:00 a.m.-5:00 p.m.

Contact Information
Publisher
Bill Forhan • 548-5286
publisher@leavenworthecho.com

Managing Editor
Gary Bégin
gary@ncwmedia.net

Reporter/Photographer
lmeditor@gmail.com

Reporter/Photographer
Michael Maltis
gchreporter@gmail.com

Advertising Sales Director
carol@leavenworthecho.com
Carol Forhan • 548-5286

Advertising Sales Chelan
RuthEdna Keys • 682-2213
ruthk@lakechelanmirror.com

Lindsay Timmermans
509-860-7301
adexec1@ncwmedia.net

Production & Creative Services
RuthEdna Keys
prepress@lakechelanmirror.com
509-682-2213

Meg Laub
Classifieds/Legals
mirrorads@lakechelanmirror.com

Circulation
509-293-6780
circulation@lakechelanmirror.com

Delivery Gary Hopkins
Bookkeeper 509-548-5286
Lake Chelan Mirror
(USPS 101-620)
is published every Wednesday
by NCW Media, Inc.
310 E. Johnson Ave., Chelan, WA
Telephone: (509) 682-2213.
Fax: (509) 682-4209

Classifieds/Legals
Classified/Legals ads
can be placed
during normal office hours
by calling 509-682-2213,
email:
mirrorads@lakechelanmirror.com

Weekly rates:
\$12.00 for the first 30 words
50 cents each additional 5
words
(over 30 words)
Borders, bold words, headlines,
logos, photos subject to
additional charges.
Place your ad online 24/7
www.ncwmarket.com

Services
Back Issues are available up to
one year after publication for a
small fee.

Deadlines
Letters to the Editor: Noon, Friday
Calendar Listings: Noon, Friday
News Submissions: Noon, Friday
Display Advertising: Noon, Friday
Legals: Noon, Friday
Classified Ads: Noon, Friday

Subscriptions
Chelan/Douglas Counties (yearly) print \$40
Chelan/Douglas Counties (yearly) print & web \$45
In State (yearly) \$50
Out of State (yearly) \$52
Good Neighbor (monthly) print or web, or both \$5
The Lake Chelan Mirror does not
refund subscription payments
except to the extent that it
might fail to meet its obligation
to publish each week, in which
case the cost of the issues
missed would be refunded as an
extension. Subscriptions may be
transferred to another individual
or organization.

Letters policy
The Lake Chelan Mirror wel-
comes letters to the editor. All let-
ters must be accompanied by the
author's name, a home address
and a daytime phone number
(for verification purposes only).
Letters may be edited for length,
clarity, accuracy and fairness. No
letter will be published without
the author's name. Thank you
letters will only be printed from
non-profit organizations and
events. We will not publish lists of
businesses, or lists of individual
names. Email your letters to:
lmeditor@gmail.com

Corrections
The Lake Chelan Mirror regrets
any errors. If you see an error,
please call 682-2213. We will
publish a correction in the next
issue.

News Tips
Have an idea for a story?
Call the Mirror at 682-2213

On The Internet
Web site:
www.lakechelanmirror.com
News e-mail:
lmeditor@gmail.com
Advertising e-mail:
ruthk@lakechelanmirror.com



NCW Media Inc. prints
on recycled newsprint with
soy ink. Please Recycle



Chelan Valley Hope has opening on its board of directors

SUBMITTED BY CHELAN VALLEY HOPE
CHELAN - Do you have an interest and background in successful writing and submission of financial grants? Do you have the time and passion to help others in the Chelan community?

Chelan Valley Hope has an opening on its board of directors. As a one-of-a-kind, social services, non-profit agency, CVH has been accomplishing positive change in people's lives for 11 years. CVH provides a one-stop access to a host of essential local & regional services.

We pave the way for long-term recovery for families and individuals with a hand-up, not just a hand-out. CVH serves the community passionately and efficiently through two paid staff and 20 dedicated volunteers and a 9-member volunteer board. CVH provides those in need

and/or crisis with rent and utility assistance to avoid eviction and shut-off, gas and food vouchers, emergency sheltering, winter clothing, personal hygiene items, and other assistance of high civic value, benefiting the City of Chelan and all of us in the greater Chelan Valley.

The board meets in the afternoon of the 2nd Thursday of each month for two hours. If you have questions or interest, please send an email to Michael Gibb at mag.gibb51@gmail.com and please visit our website at https://chelanvalleyhope.org/

Chelan PUD will not disconnect late payers

WENATCHEE - Chelan County PUD is taking more steps to help customer-owners manage financial and social impacts from the COVID-19 pandemic. General Manager Steve Wright announced Thursday that there will be no power, water or sewer service disconnects and that late payment fees also will be waived until further notice.

hours by phone at (509) 661-8002 and email at customerhelp@chelanpud.org. (PUD offices closed to the public March 13 to protect customers and staff.)



Trails, boat launches, restrooms in PUD parks are open, but a few things are changing, no events, camping until May 11
WENATCHEE - Chelan County PUD Parks Manager Ryan Baker said Friday (March 20) that staff are making a few changes in operations to protect visitors and employees and to help reduce the risk of spreading the coronavirus.

Chelan PUD's first priority is to keep delivering essential utility services, Wright said. That effort supports the work by other community leaders and public health experts to protect the community and help lower the risks faced by all.

Emphasizing social distancing by offering drop box, phone and online bill payment. Customers can leave payments in drop boxes by the front doors at our offices and in the back parking lot at the Wenatchee headquarters. You can pay your PUD bill by phone at (509) 661-8729 or pay it online by going to chelanpud.org under "My PUD Services" on the home page choose "pay my bill" to follow the instructions to pay online. That's also the place to go paperless by signing up to get your PUD bill by email with our Powerpay program.

Courtesy photo
Chelan PUD General Manager Steve Wright speaks at March 19 press conference with Wenatchee and East Wenatchee mayors and local health experts.

add to your worries. Early-spring temperatures are mild and shouldn't tax your heating system. But you can always find tips to keep your electric bill in check at ConservationMakesCents.org

payment immediately or your power will be shut off - hang up! Then call us at (509) 663-8121 to report it and check your account. (After hours you can call the 24/7 outage line at 877-783-8123. As the situation evolves, we will respond. Please stay in touch with us at chelanpud.org, find us on Facebook.com/ChelanPUD and follow us on Twitter @ChelanPUD.

Specific steps include:
Offering options to customer-owners who need help paying their utility bill. Most important is for customers to call Chelan PUD as soon as possible to work out arrangements. PUD staff is available weekdays during business

Tips for helping customers stay comfortable at home during times of social distancing by:
During the day, open your curtains and let the sunshine in. It will warm up

your house and hopefully boost your spirits, too.
Run your furnace fan to increase airflow and bring in more fresh air.
If you have a programmable thermostat, adjust your settings, since you may be at home more than usual.
Don't let energy use

Chelan, Manson school districts offer lunch, breakfast for all students Monday-Friday

CHELAN - The Lake Chelan School District: Food Service options for all students: Monday-Friday (beginning Monday, March 23): Hot Meals (Grab & Go) will be served Monday through Friday from 10:30 a.m.-12:30 p.m. to avoid large gatherings. Meals will be served "drive through style" (walk-ups are welcome) at the following locations: Morgen Owings Elementary School,

enter at the MOE bus loading zone on Woodin Ave.; Chelan Middle High School, enter through the back entrance off Farnham Street behind the High School. Each child will receive two meals (lunch for the day and breakfast for the following morning. Note: Students must be present at the time of service. Alternate Locations for Grab & Go meals (Cold

meals: sack Lunch and breakfast) will be served Monday through Friday from 10:30-11:30 a.m., at the following sites: Apple Acres Mobile Home Park - 35 Apple Acres Road and Chelan Falls Park - 555 1st Street Chelan Falls. For more information on Child Care and Menu of Learning opportunities go to LCSD Coronavirus Update in English: app.eduportal.

MANSON - Manson School Districts Meals began last Thursday, March 19. It will be Monday-Friday, 11:15 a.m.-12:15 p.m. throughout the community at Manson School District Bus Stops.

All children ages 1-18 are eligible and lunch and breakfast for the following day will be delivered. If your normal bus pick-up time is 7:40 a.m. then your food pick up time is 11:40. See food delivery route sheet on our website lakechelanmirror.com. Each children must be at the bus stop to be given a meal. For questions call the district at 687-3140

Link Transit service to continue, all services are fare-free

SUBMITTED BY LINK TRANSIT
WENATCHEE - According to the regions emergency plans, Link Transit is considered a critical life service that provides access to food, medicine, medical care and other essential services. Therefore, Link is planning and expected to continue providing service. The Link Board of Directors reconfirmed this at the March 17 board meeting. If Link has to curtail service due to lack of operators, they would reduce frequency of the

routes and retain access to all of the communities they serve in order to preserve this critical access. So, even as ridership falls due to the various community shut-downs, they will continue to provide service so that all communities continue to have access to vital services. Effective Thursday, March 19, all Link services are fare-free. This will remain in effect until further notice. Link is encouraging people to follow the recommended protective measures from the Centers for

Disease Control.
Washing your hands frequently (for 20 seconds) or if unable to wash, using a hand sanitizer with at least 60% alcohol
Avoid touching your mouth and eyes
Cover your cough and sneezes
Stay away from people who are sick
Stay home if you are sick
Should the CDC recommend additional practices to help promote public safety, Link Transit will make adjustments at that time.

Visitors, families not allowed at Heritage Heights

SUBMITTED BY AMANDA BALLOU, HERITAGE HEIGHTS ASSISTED LIVING
CHELAN - In order to stop the spread of the virus, Governor Jay Inslee announced that visitors will not be allowed at all long-term care facilities, including assisted living. Heritage Heights will comply with this order by closing its doors to all visitors, including friends and family. This decision was not an easy one, but was imperative to protect the health and safety of our residents, who are the most vulnerable. We understand that visitors mean everything to our residents, but because of the ease of spread of COVID-19, especially in long-term care settings, we need to ensure the health of our residents and staff by reducing the number of people who come and go from our building. We appreciate your understanding and support during this time. We will update you as the situation evolves.

ROCK

Continued from page 1
To reduce the risks of the adverse effects of unstable slopes to our highway system in a cost-effective manner, this project will remove loose, unstable rock from slopes adjacent to the US

97A roadway. The slopes that have been identified for this work have chronic rock fall problems with rocks reaching the highway numerous times a year, which requires maintenance call out and unplanned repairs, as well as represents a significant risk to the travelling public.

The slopes that have been identified for this work are located at the following locations on US 97A:
Slope 1: milepost 217.62 to 217.68 between Entiat and the junction of SR 971/Navarre Coulee Road,
Slope 2: milepost 219.80 to 219.90 between Entiat and the junction of SR 971/

Navarre Coulee Road,
Slope 3: milepost 224.09 to 224.13 between the junction of SR 971/Navarre Coulee Road and Knapps Hill Tunnel.
Timeline: Construction is scheduled to begin April 1, 2020. The slope scaling activities will require long closures of the roadway to safely and effectively

complete the work. Roadway closures will occur Monday through Friday beginning April 6 to April 24, from 8 a.m. to 5 p.m. with a 30 minute opening of all lanes from 3:15 p.m. to 3:45 p.m. Lane shift for slopes 1 and 2 will be in place 24 hours a day through the course of the project.

BUSINESS/SERVICES • HEALTHCARE DIRECTORY

INSURANCE
You're healthy ... until you're not
Got questions about Medicare? or Health Insurance?
Turning 65? Retiring soon?
Give Kelly Allen a call 509-888-9038
Kelly@KellyAllenAgency.com • www.KellyAllenAgency.com

PET CREMATION
North Central Washington Pet Cremation
Local facility providing quality, compassionate cremation services for your pet
Affordable after care services for your dog, cat, bird, bunny and other pets that are family
"Because they really are family"
509.422.2353
Glenn Graves, Owner • Okanogan

Add your Business or Service to this Directory Call Lindsay 509-860-7301 or Ruth 682-2213

CORRECTION

Chelan Fire & Rescue held their 2019 Recognition Awards Banquet Larc Hill Vineyard Ranch in Chelan. Their name was misspelled in last weeks story on the fire districts awards banquet.

Share Your News With Us Email it to lmeditor@gmail.com or call 682-2213

LETTERS TO THE EDITOR

Elected officials of Chelan, Douglas counties give Coronavirus advice

Dear residents of Chelan and Douglas counties,

We know that this is a very challenging time for all of us as we face the challenges of combating the coronavirus in our region. Simply put, these are unprecedented times. We applaud our health care workers who are on the front lines. We find inspiration in the stories of kindness, compassion and support occurring across the region, including community initiatives that have popped up organically over the past few days.

Please know your local governments agencies, health care facilities, nonprofits and others are unified and are working very hard — 24/7 — to safeguard and assist residents and communities. The health and well-being of our residents is paramount. For example, the two counties have partnered to land a \$884,000 grant from the state to house COVID-19 positive patients who do not require hospitalization. This regional approach will not only help vulnerable members of our community, but also those who might be displaced in the future due to required isolation from a positive diagnosis of COVID-19.

We also need your help. Our health care leaders at Confluence Health and Columbia Valley Community Health say the next week is especially crucial in stemming the spread of the coronavirus in the region. If the spread is not stemmed over the next week or so, and there is a sudden surge in cases in the days ahead, they are very concerned our local hospitals will be overwhelmed and unable to care for all those afflicted. This is a situation that requires an area-wide partnership in order to protect a valued and critical segment of our community.

We ask every resident, no matter what age, to stay inside their homes as much as possible for the next week. Not doing so could jeopardize the health and safety of our residents and communities. This is not to say you can't go buy groceries if you need food or go outside for some fresh air. But practice social distancing and stay at least six feet away from others in

the check-out line or on the trail or in the park. Several people touching the same basketball, for example, heightens the risk of spreading the virus. Wash your hands frequently. Try not to touch your face.

We ask you to visit the Chelan-Douglas Health District and Centers for Disease Control websites, along with local media organizations, for the most current information. We are working to create specific avenues for people to access accurate information in both English and Spanish in the region. Already, local media organizations are in the process of forming a working group among themselves to streamline communication efforts. We are all in this together. We will continue to move forward during these trying times, just as the region has done countless times in the past when faced with adversity. In this community, we have always rallied. Please be safe and join us in taking the necessary steps to minimize the spread of this virus.

Kindest regards,
Wenatchee Mayor Frank Kuntz East
Wenatchee Mayor Jerrilea Crawford
Chelan County Commissioner Doug England
Chelan County Commissioner Kevin Overbay
Chelan County Commissioner Bob Bugert
Douglas County Commissioner Marc Straub
Douglas County Commissioner Dan Sutton
Douglas County Commissioner Kyle Steinburg
Douglas County Commissioner

Washington animal shelters need our help during COVID-19 crisis

Like animal shelters across the country, Washington shelters need our help during the COVID-19 crisis. Staffing shortages, an increase in surrendered animals, a slowdown in adoptions and government shutdowns are all taking their toll. If your employer has asked you to work from home, now is a perfect time to foster a shelter animal. You'll dramatically improve their lives, they'll bring joy to yours, and you'll open space at the shelter. You can contact the Wenatchee Valley Humane Society at Wenatchee Valley Humane Society to foster or donate. If you are not local to



the Wenatchee area you can go to: Peto Foundation - Shelters to find shelters near you.

The CDC has confirmed that companion animals cannot spread the virus, so it's perfectly safe to cuddle your pets and fosters. Kittens provide entertainment and fun for children and their interaction with humans makes them more likely to be adopted when they return to the shelter. Dogs love to get out on walks a couple times a day which will ensure fresh air and exercise for you; a win/win. So, please open your heart and your home to just one pet for the next week or month. Our response to this crisis will decide whether animals are euthanized or saved. If fostering isn't an option, please consider making a donation to your local shelter, to ensure they can find forever homes for each and every animal surrendered into their shelter.

Peri Gallucci
Chelan

Shopping at local markets helps our Habitat for Humanity

Lake Chelan Valley Habitat for Humanity is extremely pleased to report quarterly receipt amounts as of Feb. 24, 2020 from Manson' Red Apple and Chelan's IGA stores 1% Donation Program. Manson's grocery store receipts totaled \$18,943; Chelan's were \$6,524. One percent of those totals go to Habitat.

Chelan's IGA owners Tony and Trish Race of Chelan, and Manson's Red Apple Market owners Eric and Marietta Jacobsen of Manson's store donate 1% or more of each receipt to Lake Chelan Valley Habitat for Humanity.

Karen Feek, a loyal Habitat volunteer of many years, collects receipts from the large "Apple Jar" at Habitat's Thrift Store located at 518 E. Woodin Ave. in uptown Chelan. It takes many hours for her to total donated receipts in increments of \$1,000. She then turns them back into each store. The storeowners then send our local Habitat a check for 1% (or more) of the total receipts.

Since March of 2007, Habitat has collected \$7,491 in the 1% program from these generous store owners. All you have to do is donate your receipts to help working families buy a home.

Habitat and its Partner Families have built 18 homes so far. Thank you for helping Habitat through such a simple act of thoughtfulness.

Gaylen Willett
Lake Chelan
Valley Habitat's
1% Coordinator

Editors Note: The Chelan Habitat store is closed due to the COVID19 virus. Volunteer Bruce Willett is building a drop-off box outside the building that can be used to turn your receipts in. When that is finished we will post that info.

Thank you for your support

Heritage Heights thanks the members of our community for their support in this public health crisis. We recognize and are very grateful for your donations of supplies like thermometers, hand sanitizers, cleaning products, and hand soap. With the run on the supply chain, our vendors have been unable to restock us for the last two weeks and like you, we find nothing at the retailers. We deeply appreciate your helping to protect our seniors. Thank you. Stay well and be safe.

Amanda Ballou
CEO, Heritage Heights
Assisted Living

Mike Makes Write: Keep Clam

On Wednesday, March 11, the World Health Organization declared the novel coronavirus officially named COVID-19 a global pandemic, the first since the H1N1 outbreak in 2009.



Mike Maltais

On Friday, March 13, President Donald Trump designated COVID-19 a national emergency and on that same day Washington Governor Jay Inslee, who issued a state of emergency on Feb. 29, called for a statewide closure of schools.

So, here we are. The seasonal influenza outbreaks that can be credited with taking many more lives than COVID-19 has so far, are fought with flu vaccines developed and available that, depending on how accurately health officials match the remedy to the strain, offer various degrees of immunity. There is no such option for COVID-19 as of this writing. Researchers predict it may be 18 months or longer before an approved vaccine

is available.

While this is unknown territory for us it is most certainly not for our species, as a brief review of only the 10 worst pandemics of human history, disregarding the countless lesser ones, shows. We have survived worse.

- Plague of Justinian (bubonic) (541-542) - 100 million deaths
- The Black Death (bubonic) (1346-1353)- 50 million
- HIV/AIDS Pandemic (1980-present) - 32 million
- Spanish Flu Pandemic (1918) - 20 million
- Modern Plague (1894-1903) - 10 million
- Antonine Plague (165 AD) - 5 million
- Asian Flu (1956-1958) - 2 million
- Sixth Cholera Pandemic

- (1899-1923) - 1.5 million
- Hong Kong Flu Pandemic (1968) - 1 million
- Russian Flu Pandemic (1889-1890) - 1 million
- Third Cholera Pandemic (1852-1860) - 1 million

The appearance of a virulent flu strain in four of the above 10 pandemics makes a strong case for getting an annual flu vaccination.

If there is an upside to our present crisis, it is that this latest challenge serves as a refresher course in preparedness and a magnifier of loopholes in our response network. While the U.S. ranks highest among 195 countries surveyed by the Global Health Security Index with a score of 83.5 out of a perfect 100 for health security and related capabilities, it's never good enough. The next nine countries ranked by score include:

2. United Kingdom
3. Netherlands
4. Australia
5. Canada
6. Thailand

7. Sweden
8. Denmark
9. South Korea
While March with its moderate weather did not come in like a lion this year it will be remembered as one in medical circles both locally and worldwide. The uncertainty of what lies ahead is troubling and measures being taken to prepare for what that might be are working a

hardship on families and businesses alike. But as in many times past, the world will again be looking to the extraordinary American innovation and resiliency to lead the way out of the present crisis. So:
• Be patient.
• Shelter and entertain in place.
• Practice clean habits.
• Use common sense.
• Communicate electron-

ically.
• Be proactive, not reactive.
• Observe and learn.
• Get the facts.
• Demand the truth.
As Mr. Rogers would counsel if he were here: Look for the Helpers. And as the late seafood king Ivar Haglund famously said: Keep clam. Wishing you All Good Medicine, citizens.

COVID19

CONTINUED FROM PAGE 1

course of care.

The CDHD in their press release, urges the public to take all the social distancing orders by Gov. Jay Inslee very seriously.

• These measures are temporary but they are essential to slow the virus spread, so that the healthcare system can keep up with ongoing demands.

• Continue to practice all hygienic recommendations such as proper hand washing, avoid touching your

eyes, nose or mouth and cover your cough/sneezes. Clean and disinfect commonly used objects and surfaces.

• If you have symptoms and reasons to believe your symptoms are connected to COVID-19, please practice social distancing and do not show up to a healthcare facility unannounced.

COVID-19 Message to Employers

The Chelan-Douglas Health District said in a press release on March 17 that has learned that some local employers are sending non-symptomat-

ic employees to receive COVID-19 tests.

The release said "In the absence of specific covid-like symptoms or other specific circumstances involving extended exposure to infected people, this is not an appropriate use of our limited testing capacity. It also results in a lot of unhappy employees, who discover that tests are not actually done for that purpose. If you are an employer, please do not impede access to justifiable testing by attempting to have your employees tested just in case.

CLOSURES

CONTINUED FROM PAGE 1

actions can be conducted by phone at 509-682-8023. The office is closed for in-person business. Lake Chelan Golf Course will be closed.

Chelan County Com-

missioners declare emergency

WENATCHEE - On March 17 the Chelan County Board of Commissioners took the step of signing an Emergency Declaration Resolution in regards to the COVID 19 virus. By signing this resolution local businesses

and non-profits will now have access to potential State and Federal assistance.

They encouraged Chelan County residents to remain cautious and aware and to do everything possible to help one another during this difficult time.

**We take Donations for
Chelan Valley Hope
and Lake Chelan Food Bank**



Non Food Items needed:

- Baby Wipes • Diapers • Toilet Paper
- Travel Size Toiletries • Shampoo
- Conditioners • Dish Soap • Laundry Soap

- Canned fruit
- Cereal • Condiments
- Canned veggies
- Jam • Chili
- Soup other than tomato
- Boxed entrees
- Canned meats





Monday-Friday - 9 a.m.- 5 p.m.

310 E. Johnson Ave. • Chelan • 682-2213
Across from the Lake Chelan School District office

lakechelanmirror.com

OBITUARIES

Ken Miller

Ken Miller was born on March 28, 1938 in Falls City, Nebraska to Reg and Hazel Miller. He had an older brother, Richard at home.

At 2 years of age he moved with his family to Portland, Oregon; where he grew up. He always considered Portland as his home. He graduated from Gresham High School in 1956.

During his Junior year in high school; he wanted to follow in his brother's footsteps by racing British sports cars at different locations in



Washington and Oregon. He began racing a MG at 17. He later purchased a Jaguar to be more competitive. He truly enjoyed racing during this period of his life.

He attended Oregon State for 2 years majoring in Business Administration. In 1960, he enlisted into the U.S.

Army and was stationed at Frankfurt, Germany. In 1961, the Army relieved him of active duty when his brother died. He was assigned to the Army Reserves at Fort Lewis, Washington and honorable discharged in 1966.

He met his wife Kathleen on a blind date via a mutual friend. They were married September 15, 1967 at Saint John's Episcopal Church in Marysville, California. Their first home was in Portland, Oregon where he worked at Reynolds Aluminum Company and she continued her nursing career.

In 1977 they bought his

uncles 10 acre apple orchard and moved to Manson, Washington. Knowing nothing about growing apples; they had to rely on field staff from Trout Inc. to show them how it was done. It was hard work but something they enjoyed doing together until 2005.

During the time they were in the apple business; they still had fun doing other things. Ken who always wanted to learn to fly took up flying lessons at the age of 56 and received his pilots license. He enjoyed flying to various fly-ins especially Arlington, Wash-

ington where they camped right by the plane for 4 days visiting the other pilots who flew in. It was a known fact Kathleen always drove over to Arlington to camp out since she didn't enjoy flying that much. During the winter months they like to go snowmobiling. As the warmer weather approached they would get their touring bike out and enjoyed riding with friends on the weekends.

Ken passed away on March 19, 2020 at Ella's Adult Family Home in Wenatchee.

Kathleen would like to

thank them for the excellent care he received.

Ken is survived by his wife, Kathleen, his sister-in-law and brother-in-law Jeanne and Roger Aaronson, nephew Dave Aaronson and two nieces Sharon Johnson and Leslie Stevens.

Precht Rose Chapel is in charge of arrangements. A Memorial Service will take place at North Shore Bible Church with Pastor Craig when able to have them. At Ken's request; his remains will be scattered over the surrounding hills of Manson which he so dearly loved to fly over.

Barbara Ann Peters

March 13, 1938 – March 17, 2020

Barbara was born in Wenatchee to Modest and Dorothy Peters of Manson, and passed away at her home in Seattle.

A great deal of life and joy went on between those two dates. Barbara lived a full and satisfying life, filled with friends, travel, work, and play, maintaining a constant positive attitude that buoyed those around her.

She grew up in Manson on the shores of Lake Chelan. Attending Manson schools, she was involved in many activities: student body treasurer, honor society,



homecoming queen, school newspaper, Pep Club, and school plays.

After graduation, she attended Washington State College (now University) for 2 years.

Then she moved to Spokane and went to work in the office for the Max J Kuney

Construction Company, working with managers and estimators and flying in the company plane to various highway, dam, and bridge construction sites.

While in Spokane, she married Lee Richmond but the marriage didn't last long.

She started taking evening classes at Whitworth College, obtaining a degree in education in 1967. She took a teaching job in Auburn, Washington, where she worked for the next 30 years until her retirement in 1998.

Over the decades of teaching 4th and 5th graders, several of her students went on to have children of their own who lived in her district and insisted their children

must be in Miss Peters' class. She was constantly trying out new ways of keeping children engaged and interested, with all kinds of hands-on devices, arts, and crafts.

She spent many summers with her parents on Lake Chelan, renewing old friendships, and occasionally traveled overseas.

Barbara was a voracious reader, like her mother. She had a large hardback volume of all Jane Austin's stories which she read through once each year. Her favorite singers were Ella Fitzgerald and Mel Torme, and her favorite sports were football and baseball. From teaching, she had a group of friends who met regularly over the years in a round-robin pattern

of hosting, sharing meals, gift-giving, and reinforcing companionship.

She and her brother John bought a condo in Seattle, and she moved there when she retired. Having visited Arizona with friends, her dream was to have a winter home there. After retirement, she had a home built in Sun City Grande in Surprise, Arizona, and spent many winters there. In 2017, she sold her Arizona home and moved back to Seattle. Soon thereafter she moved into the Bayview continuing care facility into a room with a breathtaking view of Seattle, the Space Needle, Mount Rainier, and Puget Sound. A carryover from her years as a teacher, she immediately learned ev-

eryone's name at Bayview, made many new friends, and very much enjoyed spending her final years there.

Her brother Ed and his wife Barbara both passed away in recent months. She is survived by her brother Don (Marlene) in Spokane, her brother John in Manson, niece Cynde Lund of Bothell, nephew Gary Lund of Seattle, nephew David Peters of Woodinville, and many friends and former classmates.

Memorial donations may be made to the Peters Family Scholarship Fund c/o Community Foundation of North Central Washington, 9 S. Wenatchee Ave, Wenatchee WA 98801 to benefit graduates of Manson High School.

Sylvia Ahnell Gervais

Sylvia Gervais entered into eternal rest on March 21, 2020 at her home in Chelan, Wash. with her loving family at her side.

Sylvia was born April 16, 1939 in Blue Island, IL to Suno and Rose Ahnell. She joined older sister Gloria. Brother Arden was born 13 years later. Suno's family had emigrated from Sweden when he was two. During the Great Depression with many banks and businesses



closing, he helped support his family by scavenging and using materials and supplies from these buildings. His skill in metallurgy, pattern making and woodworking

helped direct Sylvia's lifetime journey.

Sylvia's childhood in Blue Island, a suburb of Chicago, was happy and she remembers her mother Rose was a good cook, following in her own mother's path as a capable homemaker and good cook.

In high school, Sylvia loved being in the marching band, participated as a bugler in the drum and bugle corp, and also played the accordion. She worked part-time in a doctor's office and was fascinated with radiology. After graduation she enrolled in a two-year radiology program, but was needed at home to care for her new baby brother.

Eventually, a friend invited her to go along to a U.S. Air Force recruiter's office. There, on a whim, in November, 1957 she enlisted. After basic training at Lackland Air Force Base in Texas, Sylvia remembers she could hardly afford a bus ticket home.

Continuing with her interest in the new field of

radiology, Sylvia began on the job training at McGuire Air Force Base at Wrightstown, NJ. Early in 1958 she received her orders to Travis Air Force Base near Fairchild, CA. There, in November, 1959 Sylvia became a certified radiologist with the AART (American Registration of Radiological Technicians) which Sylvia maintained until the late 1990s.

Soon after she met Staff Sergeant Bob Gervais, serving in preventive medicine at Travis AFB, who seemed to be looking for a fishing partner. When Bob was assigned to Iceland, Sylvia went to Syracuse, NY to get acquainted with his family. They were married on Halloween in 1959—and the rest is history. (The couple celebrated their 60th wedding anniversary last Halloween.)

The couple decided one person serving in the US Air Force was enough. Sylvia gladly supported her husband as he later became a medical administrator in the

Air Force and served at Hill AFB in Utah, Tinker AFB in Oklahoma along with some duty in France, England, Japan and Korea.

After two children joined their family, Sylvia often worked as a radiological technician during the evening hours.

When Bob Gervais retired from the Air Force in September, 1973 he was required to write his resume as part of his retirement duties. This resume was made public, and they received several telephone calls offering Bob employment in medical administration. One call came from Chelan, Wash.

Sylvia and Bob loved Chelan at first sight, rented a house, and arrived in Chelan on a dark, cold January day in 1974. They later purchased a house, and Bob managed the local health clinic for 22 years, where Sylvia worked as a radiological technician until they both retired.

Sylvia will be remembered as a veteran, a patriot, a radiological technician

who was a pioneer in the field, a devoted wife and mother, who loved to travel. Three Caribbean cruises on Windjammer sailing ships and a long visit with her brother in England were highlights for her, as well as a short-lived antiquing business with container shipments sent to Chelan from England. She was a member of the first EMT class in the Lake Chelan Valley and served the valley as an EMT for eight years.

Sylvia Ahnell Gervais was preceded in death by her father, mother, sister, brother, son Troy and grandson Steven.

She is survived by her husband Bob of the family home; daughter Monique (Paul) Reynolds, North-bend, OR; six grandchildren, Sean, Anthony, Emily, Maria, Chris, John; two great-grandchildren, Garrett and Ezra; brother-in-law Richard Gervais, Syracuse, NY; and many nieces and nephews.

Interment will be at a later date at Moses Lake Veterans Cemetery.

OBITUARY & MEMORIAL POLICIES NCW MEDIA, INC. An obituary is a way for family member(s) to commemorate a loved one's life and to notify the larger community of the deceased. Memorials are another way of letting the community know about the life and memories of the person who has died. Obituaries and memorials need to be typed and emailed no later than Friday by 4:00 p.m. Cost of the obituary/ memorial is due at the time of placement. Obituaries are priced per word while Memorial ads are per column-inch.

SENIOR MEALS Chelan/Manson Senior Center CHELAN - The Chelan Senior Center is closed, however meals are being given out on a takeout bases. Senior Meals Call (509) 888-4440 by 9:30 a.m. Monday thru Friday to order your meal call. No meals are being served in Manson. March 27 - no meals served in Manson Monday, March 30 Biscuits & Gravy Stewed Tomatoes Juice Fresh Fruit Blueberry Muffin Tuesday, March 31 Beef Tacos Spanish Rice Spiced Salad Mandarin Oranges Dessert Wednesday, April 1 Chicken Florentine Garden Salad Fresh Fruit Garlic Bread Dessert

CHURCH GUIDE New to the area? On Vacation? These churches welcome you! CHELAN CHELAN CHURCHIAN CHURCH Morning Worship 10 am 682-2025 • 210 E. Wapato Ave. Pastor Mark Wilton CHURCH OF THE NAZARENE Sunday School 10 am Worship 11 am & 6 pm Youth Group - Friday 7 pm for 13-18 years of age 682-5135 • Sanders St. & Okanogan Ave. LAKE CHELAN LUTHERAN CHURCH Worship 9:30 am Sunday School following Worship Service 682-9063 • 216 W. Nixon Ave. LAKE CHELAN UNITED METHODIST CHURCH Worship 10 am 682-2241 Corner of Johnson & Emerson CHELAN LIVING STONE CHURCH "Gathering in our uniqueness, United in our Purpose." Scott Morris, Senior Pastor SUNDAY ACTIVITIES Gathering -10:00 am (Children's Church & Nursery available) Adult Bible Study - Noon WEDNESDAY ACTIVITIES Kids ROCK 6:10-7:40 pm (K-5th grade, Oct-March) WE GATHER at 216 N Emerson (2nd Story-Chelan Public Library) OUR OFFICE LOCATION 105 N Emerson - Suite 204, Chelan • 509-682-5953 For more information about us and our activities visit www.lscchelan.org ST. ANDREW'S EPISCOPAL CHURCH Worship 10 am 120 E. Woodin Ave., PO Box 1226, Chelan, WA 98816 682-2851 • www.standrews-chelan.org ST. FRANCIS DE SALES CATHOLIC CHURCH English Mass Saturday 5 pm • Spanish Mass Saturday 7 pm English Mass Sunday 9 am Spanish Mass Sunday Noon Rev. Rogelio Gutiérrez, Pastor 682-2433 • Next to Safeway ENTIAI ENTIAI FRIENDS CHURCH Pastor Mark McDonald 509.784.1342 email: entiaifriends@nwi.net 2848 Entiat River Road Sunday morning Bible Classes 9:45 am Sunday morning Worship 11 am Sunday morning Worship (summer months) 10 am Wednesday Shared Dinner 6 pm Wednesday Programs Adults/Youth/Children 7 pm MANSON MANSON UNITED METHODIST COMMUNITY CHURCH Sunday Worship 10 am With coffee following service 687-3311 Green & Boetzkes 'We are a come as you are church' NORTH SHORE BIBLE CHURCH Sunday Worship 9:30 am Nursery (birth - 3 years) 9:30 am Kidz Church (4 years-5th Grade) 9:30 am 687-3636 • 123 Wapato Point Parkway www.northshorebc.org Craig Rayment, Sr. Pastor BREWSTER HOPE LUTHERAN CHURCH - LCMS Sunday Worship 11 am Holy Communion 1st, 3rd, & 5th Sunday Bible Study & Sunday School 10 am 689-3106 • 1520 Sunset Drive Kevin Moore, Pastor TO PLACE YOUR CHURCH IN THIS GUIDE: RUTH 682-2213 • ruthk@lakechelanmirror.com

NCW MARKET.COM
CLASSIFIED ADS

Wenatchee Business Journal
ECHO RECORD MIRROR HERALD

Place your ad online at NCWMARKET.COM or call 509-548-5286 - Leavenworth Echo/Cashmere Valley Record
509-682-2213 - Lake Chelan Mirror • 509-689-2507 - Quad City Herald

CLASSIFIEDS

PUBLISHER'S NOTICE
All real estate advertising in this newspaper is subject to the Fair Housing Act, which makes it illegal to advertise "any preference, limitation or discrimination based on race, color, religion, sex, handicap, familial status or national origin, or an intention to make any such preference, limitation or discrimination." This newspaper will not knowingly accept any advertising for real estate that is in violation of the law. To complain of discrimination call HUD at 1-800-669-9777. The number for hearing impaired is 1-800-927-9275.

HOMES FOR SALE
Home For Sale \$99,900

LOTS & PROPERTY WANTED
Private party looking for a lot or cabin on Lake Wenatchee with low bank or no bank. Contact Elmer at (360) 629-2133 or email: valelmermickels@aol.com

HELP WANTED
WSU Colville Reservation FRTEP Extension Coordinator
Summary of Duties: Provide outreach education in the areas of agriculture and natural resources on the Colville Reservation, as outlined in the goals, objectives and timeline of the USDA FRTEP grant project that funds this position, in cooperation with the WSU Colville Reservation Extension Team. This programming includes the development, organization, coordination, and implementation of programs and activities within the policies and procedures of WSU Extension. Official workstation is in Nespelem, WA. **Position closes 03/31/20** To apply, visit wsujobs.com/postings/51260_EEO/AA/ADA.

Douglas County PUD Has an opening for a Temporary Land Management Technician
Please see our website for complete details.
www.douglaspudd.org

HELP WANTED
Leavenworth Summer Theater is looking for a Facilities Manager. This is a great opportunity for someone who likes to work outdoors and enjoys being around people. Full time during the summer and extremely part time the rest of the year. Salary between \$16k - \$22k annually, DOE. Visit our website for more information: leavenworthsummertheater.org/employment

CORRECTIONS: NCW Media Inc. shall be responsible for corrections to advertisements on the first publication only. The advertiser will be responsible for corrections made thereafter. NCW Media Inc. shall not be responsible for slight changes or typographical errors that do not lessen the value of the advertisement. NCW Media Inc.'s liability for other errors or omissions in connection with an advertisement is strictly limited to the publication of the advertisement in any subsequent issue. No monetary refunds will be given. For more information call (509) 548-5286.



Looking for a home for your Furry friend?
Try the pet section on NCWMarket.com

Own... don't rent. 3 bedroom nice home on 2 lots. Quiet street, lots of parking. Large indoor storage, fenced yard. Home is move in ready in great shape inside and out. 25 minutes to Chelan area.
29 Walnut St., Mansfield, Wash.
Call for questions and/or showing.
Offered by Chelan Realty Tim - 509-683-2080 Broker

FOR RENT
R. V. Rental Space
All utilities are included on this beautiful property near Safeway in Leavenworth. Great for motorhome or trailer with pickup. For more information, call 509-699-9337 or email: deehappysunshine@aol.com
Also go online and checkout NCWMarket.com

HAPPY ADS
ANNOUNCE IT IN THE CLASSIFIEDS
AT NCWMarket.com
*HAPPY BIRTHDAY
*CONGRATULATIONS!
*WILL YOU MARRY ME?
*I'M SORRY!!
*Happy Anniversary
Only \$15 for 30 days
includes 3 photos

ORCHARDS & FARMS
WASHINGTON BROKERS
We have buyers for your Pear, Apple and Cherry Orchards!
509-669-4500
information@nwi.net

REDUCE REUSE RECYCLE

HELP WANTED
Popular boutique in Leavenworth now hiring, Summer or long-term available. Fun and enjoyable environment.
Email resume to frenchquail@gmail.com or pick up application at Simply Found, 833 Front Street
Cynthia 425-330-2756

Slidewaters Seasonal Employment Opportunities
Join the Team at Slidewaters. Now accepting applications for Guard Team, Food & Beverage Team, Maintenance and Operations Team, Grounds Team. Applications available online <https://www.slidewaters.com/ncwmedia-team-member-opportunities>
We are focused on hiring happy, reliable hard-working people who can offer good customer service with a great attitude. Our dynamic business has opportunities for all skill types. Willingness to learn and be adaptable a must.

Spokane Regional Health District (SRHD) SNAP-Ed (Supplemental Nutrition Assistance Program Education) program is seeking project applications from organizations that can deliver comprehensive and coordinated community-based nutrition education and/or obesity prevention projects with low-income audiences receiving and/or eligible for Basic Food. An informational webinar will be held on Thursday, April 2, 2020 at 10:30 a.m. PDT. The deadline for the grant applications will be on Friday, May 1, 2020 at 11:59 p.m. PDT. For more information on the webinar, and to download the grant application and materials, please visit <https://srhd.org/news/2020/snap-edrfa>.
SRHD hereby notifies all applicants that no person or organization shall be discriminated against on the basis of race, religion, color, age, sex, sexual preference or national origin in consideration for an award issued pursuant to the advertisement. Minority organizations are encouraged to submit applications in response to this invitation.

NCW MARKET.COM CLASSIFIED ADS

PUBLIC WORKS UTILITY MAINTENANCE WORKER
The City of Leavenworth is now accepting applications for a Utility Maintenance Worker. This position's regular work week will be Thursday through Monday. Duties include a variety of semi-skilled and skilled tasks in maintenance work including weekend garbage collection, operating maintenance equipment, building repair, and utility emergency response. The position is year-round. Compensation package includes medical, dental benefits and PERS. Probationary pay starts at \$3,618/month increasing to \$4,256 - \$4,654/month (based on step increases over time). The minimum requirements for this position include a H.S. Diploma, CDL License and minimum 2 years' experience of similar work. This union covered position is conditioned on passing a drug / alcohol test and pre-employment physical. Job application and full job description are available via our website at www.cityofleavenworth.com, or by contacting us at (509) 548-5275.
The City of Leavenworth is an equal opportunity employer.
Application deadline is 5:00 P.M. on April 10, 2020.

Writer/ Photographer
LAKE CHELAN MIRROR
Is looking for a talented writer/ photographer to report on the news of the Lake Chelan Valley. Qualified applicants will cover city council, local school boards, high school sports and community events. Must be a good writer, photographer, and have excellent computer skills and love to attend community events. Must be a team player and willing to work flexible hours. To apply send your resume and writing samples to:
Publisher
NCW Media, Inc
PO Box 39
Leavenworth, WA 98826
or email to leavenworth@leavenworthecho.com

Find the Best Qualified Local Employee in our Classifieds Ads.
Place your ad 24/7 at www.NCWMarket.com
Deadline Monday at noon for the paper **Lake Chelan Mirror Leavenworth/ Cashmere**
Deadline Tuesday at noon **Quad City Herald**
Your ad will appear online and in the newspaper for one low price.

Highly Capable Program
Cascade School District is committed to identifying and providing for the unique educational needs of all of our students. At this time, the district is soliciting nominations from parents, school staff, and community members for students that are believed to have a high capacity to learn quickly, deeply, and/or broadly, so that we can better provide an individualized educational service to each of our students. Students nominated through this process will be considered for enrollment in the district's highly capable program based upon screening and assessment with the permission of their parent/ guardian.
Nomination forms can be obtained from the Cascade School District website www.cascadesd.org under Programs and Highly Capable and in school offices. In order to be considered for identification for the coming school year, nomination forms should be returned to Mike Janski, Highly Capable Director, at Icicle River Middle School by April 17, 2020 either by dropping them by the middle school, by email mjanski@cascadesd.org or by mail; 10195 Titus Rd. Leavenworth, WA 98826

El Distrito Escolar de Cascade está comprometido a identificar y proveer para las necesidades educacionales únicas de todos los estudiantes. En este momento, el distrito está solicitando nominaciones de padres, del personal escolar, y de los miembros de comunidad para estudiantes, que se creen tener una alta capacidad de aprendizaje rápido, intensivamente, y/o de manera amplia, para que podamos proveer un mejor servicio de educación individualizada para cada uno de nuestros estudiantes. Los estudiantes nominados para este proceso se van a considerar para la matriculación en el programa, altamente capaz (Programa de alta capacidad), será basado en exámenes y evaluaciones con el permiso de los padres/tutores legales.

Las formas para hacer una nominación se pueden obtener por la página de web del Distrito Escolar de Cascade (www.Cascadesd.org) se encuentran bajo la pestaña del Programs y Highly Capable) y en las oficinas escolares. Con el fin de ser considerado para la identificación del próximo año escolar, deben devolver las formas de nominación al Sr. Mike Janski, Director del Programa de Alta Capacidad en la Escuela Intermedia Icicle River para el 17 de abril, 2020, por correo electrónico mjanski@cascadesd.org o por correo: 10195 Titus Rd. Leavenworth, WA 98826. (WAC 392-170-035, WAC 392-170-036)

The Cascade School District is seeking qualified applicants for the following positions:
• Cascade High School Assistant Volleyball Coach
• Cascade High School Girls Assistant Soccer Coach
• Icicle River Middle School 7th Grade Softball Coach
Fast Track application process and information can be found on our website at: www.cascadesd.org EOE

See MORE CLASSIFIEDS & PUBLIC NOTICES on Page 6

CROSSWORD PUZZLE
THEME: MYSTERIES AND THRILLERS
ACROSS
1. Wire danger
6. Part of a circumference
9. Nashville's Keith 13. In a cold manner
14. Prefix for something revived
15. Paralyzing disease
16. Muddled wine
17. Egg cells
18. A do-nothing
19. "Alphabet Series" detective novels author
21. "It's close to midnight, and something evil's lurking in..."
23. Second mo.
24. Fabrica Italiana Automobili Torino
25. Not don'ts
28. Popular Japanese soup
30. "Agatha Christie's famous sleuth"
35. Wood sorrels
37. "Through" in text
39. Give sheep a haircut
40. Raise the roof
41. Wall or pedestal support
43. Cogito, sum
44. Drink like a cat, two words
46. Be inclined
47. Commotions
48. Bewitch or beguile
50. Jack and Jill's water jug
52. Put to work
53. "James Patterson's _____ the Girls"
55. "Jack and the Beanstalk" Giant's disapproval
57. "Hitchock classic"
61. "Poe's "Tales of _____ and Imagination"
65. In the know
66. "Subject of Roswell's mystery"
68. Cocoon dwellers
69. King Julien XIII of "Madagascar," e.g.
70. Bubble source
71. Possible allergic reaction
72. Gaelic tongue
73. Store posting, for short
74. Oceanic trenches
DOWN
1. Google alternative
2. Maple genus
3. Capital on the Baltic Sea
4. Blindman's _____
5. International _____ of Units
6. In a little while, old-fashioned
7. Once around
8. Raccoon's South American cousin
9. "The Demon Barber"
10. Spanish earthen pot
11. Coffin stand
12. "New _____ setting of "The Alienist"
15. Michelangelo's famous Vatican statue and others like it, e.g.
20. Death reports, for short
22. Deli offering
24. Baby extractor
25. "Sherlock Holmes creator"
26. Continental divide
27. Planktonic tunicate
29. "Who J.R.?"
31. Actress Perlman
32. "Lost" in Paris
33. Mar-a-____ pl.
34. Having a toothed margin
36. Undesirable location
38. Forearm bone
42. Enlighten
45. Slower
49. Oil drilling apparatus
51. Spoke with a speech defect
54. Make a murmuring sound
56. Chopin's composition
57. Wide river valley
58. Water carrier
59. L.A. footballers
60. "HBO's " Detective"
61. "Pamela Voorhees and Norma Bates, e.g."
62. D'Artagnan's sword
63. Stairway alternative
64. Those not opposed
67. "Remus Lupin's occasional body cover"

Your Family Deserves The **BEST** Technology... Value...
\$59.99 MONTHLY
150 Channels
CALL TODAY Save 20%!
1-888-416-7103

Upgrade to the Hopper 3 Smart HD DVR
- Record and record 16 shows at once
- Live TV on 4 HD channels
- Watch TV on your mobile devices
- Upgrade from Hopper 2
- Hopper required for service.
Add High Speed Internet
\$14.95 #/mo.
- 100 Mbps download
- Minimum speed 100 Mbps for streaming.

dish

Have products or services for sale?
Don't bury them in EBay or Craig's List or park it by the side of the road.
Your most likely buyer lives right here in North Central Washington
NCWMarket.com is a classified advertising service of NCW Media, Inc.
Publisher of The Leavenworth Echo, Cashmere Valley Record, Lake Chelan Mirror, Quad City Herald & Wenatchee Business Journal
The good news is:
• It's available 24/7
• Rates start as low as \$5 per month
• Google says we averaged 5,277 visitors per month last year
• You can have multiple photos even videos
• You can protect your identity until you decide to respond to inquiries, OR
• You can include a map to your business
• You can change the ad anytime you want - as often as you want
• We don't sell your email address or any of your personal information
• Our monthly subscription programs allow you to change your ad entirely at no additional charge
Place your ad now: NCWMarket.com

Join the Digital Age!

