

**Chelan High School names new sports coaches**  
see page 3

**COVID19 Cancellations, updates can change rapidly.**  
Check our website for the latest

### 4th of July Fireworks to be held in Manson, donations being accepted

MANSON - The Manson Chamber of Commerce is moving forward with their Fourth of July Fireworks in Manson Bay. They will be working with the Manson Fire Department, Chelan County Sheriff and Chelan County PUD through the Manson Parks Department and the cooperation of the community to keep everyone safe and healthy.

Due to the COVID-19 Pandemic they will not be having any events in the park or having their annual concert with the Lake Boys.

They encourage everyone to view the fireworks from their boat, home and car in order to adhere to the social distancing mandate. They are working on maps of the areas that are conducive for viewing the fireworks from your car.

If you are viewing from the street adhere to social distancing of 6 feet from other viewers and we strongly encourage that you wear a mask to protect yourself and others from inadvertently spreading any virus.

To make a contribution to the fireworks show, go to: [manson-chamber-of-commerce.square.site/](http://manson-chamber-of-commerce.square.site/)

For updates go to [more-tomanson.com](http://more-tomanson.com)

## Movin' on up



RuthEdna Keys/ LCM

One hundred and nine Chelan Middle School 8th graders came as Pirates and left as 9th grade Mountain Goats, at their drive-in Moving Up Ceremony held on Wednesday, June 17, by the Chelan Middle School entrance. Students, some in decorated trucks and cars, received their Moving Up Certificate and their Mountain Goat Lanyard and had their name announced by 8th grade teacher Cindy Bertomeu. ABOVE LEFT: CMS Principal Brian Wood hands Kayla Alcazar her certificate and lanyard. ABOVE: Rob Rainville, Chelan Middle School Dean of Students gives elbows to an 8th grader, before handing him his certificate and lanyard. The students were then cheered on by middle school teachers. LEFT: 8th Grade Angie Holling Award winners are Natalie Islas (second from left) and Cray Silva (far right). They are seen here with retiree teacher Mr. Linehan. More photos at [lakechelannmirror.com](http://lakechelannmirror.com)



## Peaceful and loud B.L.M protest



RuthEdna Keys/ LCM

A group of over 100 protestors participated in a peaceful, but loud protest, on June 16 in Riverwalk Park and in the downtown Chelan area. The event was organized by two young women from our valley. After hearing a couple of speakers the protestors took

off on a three mile march around Chelan, crossing both bridges, to Don Morse Park, to Les Schwab, before returning to Riverwalk Park to hear more speakers. More photos at [lakechelannmirror.com](http://lakechelannmirror.com)

### Upcoming Events/ Meetings

#### Manson Farmer's Market: June 24, 27

MANSON - The Manson Farmers Market has opened for their summer season and will hold markets each Wednesday and Saturday through September. Sales begin at 8:30 a.m. and continue until approximately noon. All required safety procedures will be followed-hand sanitized at entrance, social distancing and masks recommended for shoppers. All vendors will be wearing masks and using hand sanitizer.

#### Chelan Evening Farmer's Market: June 25

CHELAN - Chelan Thursday Evening Farmers market is open now thru the end of September, 4-7 p.m. There will be handwashing stations for customers and vendors. They will operate within a modified layout with one-way foot traffic procedures. They will limit the sale of food to whole produce and pre-packaged food items and ensure all ready-to-eat foods are packaged for home consumption only. Vendors will wear a

SEE EVENTS ON PAGE 2

#### Current theme: Superheros, enter by June 30

CHELAN - The City of Chelan is holding a weekly contest to select the most unique face mask. Each week a new theme will be announced. Citizens are encouraged to create a mask following each week's theme and send a photo wearing their mask to the City ([pmichajla@cityofchelan.us](mailto:pmichajla@cityofchelan.us)) or post on the City's Facebook page.

Winners for Sports Teams are: First Place: Mary Amsden for "The Cougar Family"; Second:



Courtesy City of Chelan  
LEFT TO RIGHT: First: Mary Amsden for "The Cougar Family"; Second: Phyllis Coleman for "Seahawks"; and Third: Linda Reister for "Chelan Goats"

Phyllis Coleman for "Seahawks" and Third: Linda Reister for "Chelan Goats." The winners will split



the prizes listed below. \$25 Chamber Bucks - donated by Mayor Goedde; \$25 Chamber Bucks - donated



by the Dobbs family; \$25 Chamber Bucks - donated by the Chelan Chamber of Commerce; \$50 Gift Card - donated by the Apple Cup Cafe; \$25 Manson Chamber Bucks - donated by Debbie Conwell.

The intent of this effort is to help promote the importance of our citizens wearing face masks when

out in public - and also to have some fun and win a prize.

They will announce a weekly winner on Wednesdays and reveal the upcoming week's theme. The winners and weekly mask themes will be posted on the City's Facebook page. Entries are due no later than Noon on Tuesdays. Lake Chelan Chamber of Commerce Bucks will be awarded to the weekly winners. Prizes will be awarded for 1st, 2nd and 3rd each Wednesday morning.

Please show your creativity and artistic talents by participating in this contest.

**SHOP LOCAL**

**During this difficult time support your neighbors**

Most local businesses offer curbside service or delivery

### INSIDE THIS WEEK

Community, Recreation ..... 1-3	<b>Classified Index</b>	<b>Inserts</b>
Church News ..... 4	Classifieds, Puzzles ..... 5-6	Safeway
Obituaries/Death Notices ..... 4	Public Notices ..... 5-6	Manson Bay Market
Bulletin Board ..... 4	Business & Services,	
	Health Care Directory ..... 2	



310 E. Johnson Ave.,  
P.O. Box 249  
Chelan, WA 98816-0249  
509-682-2213  
[www.lakechelannmirror.com](http://www.lakechelannmirror.com)



© NCW Media Inc. 2020
310 E. Johnson Ave., P.O. Box 249
Chelan, WA 98816-0249
Phone: (509) 682-2213
Fax (509) 682-4209

Office Hours
Mon. to Fri. 9:00 a.m.-5:00 p.m.

Contact Information
Publisher
Bill Forhan • 548-5286
publisher@leavenworthecho.com

Managing Editor
Gary Bégin
gary@ncwmedia.net

Reporter/Photographer
lcmirror@gmail.com

Reporter/Photographer
Michael Maltis
gchreporter@gmail.com

Advertising Sales Director
carol@leavenworthecho.com
Carol Forhan • 548-5286
echoads@leavenworthecho.com

Advertising Sales Chelan
RuthEdna Keys • 682-2213
ruthk@lakechelanmirror.com

Lindsay Timmermans
509-860-7301
adexect1@ncwmedia.net

Production & Creative Services
RuthEdna Keys
prepress@lakechelanmirror.com
509-682-2213

Meg Laub
Classifieds/Legals
mirrorads@lakechelanmirror.com

Circulation
509-293-6780
circulation@lakechelanmirror.com

Delivery Gary Hopkins
Bookkeeper 509-548-5286
Lake Chelan Mirror
(USPS 101-620)

is published every Wednesday by NCW Media, Inc.
310 E. Johnson Ave., Chelan, WA
Telephone: (509) 682-2213.
Fax: (509) 682-4209
Periodical postage paid at Chelan, Wash. 98816
Postmaster: Send address corrections to: Lake Chelan Mirror, P.O. Box 249, Chelan, WA 98816-0249

Classifieds/Legals
Classified/Legals ads can be placed during normal office hours by calling 509-682-2213, email: mirrorads@lakechelanmirror.com

Weekly rates:
\$12.00 for the first 30 words
50 cents each additional 5 words
(over 30 words)
Borders, bold words, headlines, logos, photos subject to additional charges.
Place your ad online 24/7 www.ncwmarket.com

Services
Back Issues are available up to one year after publication for a small fee.

Deadlines
Letters to the Editor: Noon, Friday
Calendar Listings: Noon, Friday
News Submissions: Noon, Friday
Display Advertising: Noon, Friday
Legals: Noon, Friday
Classified Ads: Noon, Friday

Subscriptions
Chelan/Douglas Counties (yearly) print \$40
Chelan/Douglas Counties (yearly) print & web \$45
In State (yearly) \$50
Out of State (yearly) \$52
Good Neighbor (monthly) print or web, or both \$5

The Lake Chelan Mirror does not refund subscription payments except to the extent that it might fail to meet its obligation to publish each week, in which case the cost of the issues missed would be refunded as an extension. Subscriptions may be transferred to another individual or organization.

Letters policy
The Lake Chelan Mirror welcomes letters to the editor. All letters must be accompanied by the author's name, a home address and a daytime phone number (for verification purposes only). Letters may be edited for length, clarity, accuracy and fairness. No letter will be published without the author's name. Thank you letters will only be printed from non-profit organizations and events. We will not publish lists of businesses, or lists of individual names. Email your letters to: lcmirror@gmail.com

Corrections
The Lake Chelan Mirror regrets any errors. If you see an error, please call 682-2213. We will publish a correction in the next issue.

News Tips
Have an idea for a story? Call the Mirror at 682-2213

On The Internet
Web site: www.lakechelanmirror.com
News e-mail: lcmirror@gmail.com
Advertising e-mail: ruthk@lakechelanmirror.com

Washington Newspaper Publishers Association Member
NCW Media Inc. prints on recycled newsprint with soy ink. Please Recycle

Bringing the community to your door

Chelan location of Marson & Marson is moving

SUBMITTED BY MARSON & MARSON

CHELAN - We are excited to announce that we will be moving out of the Marson and Marson facility in Chelan, and merging the Marson team with the store and staff at Lake Chelan Building Supply (LCBS) in Chelan. This new partnership will allow us to continue to serve customers in the Lake Chelan market with the same great service you expect, with the added benefit of the combined expertise and resources of Marson and Marson Lumber and Lake Chelan Building Supply.

The last day we will be open for business in the Marson and Marson store

is June 26, with our staff, products, and equipment moved to the Lake Chelan Building Supply facility by July 6.

The address for the Lake Chelan Building Supply store is 155 Chelan Falls Rd. in Chelan.

If you have an account with Marson and Marson Lumber, your account will automatically be moved to the Lake Chelan Building Supply store (if you do not already have an account set up there). For the balance of 2020, we will continue to use the Lake Chelan Building Supply point of sale system to complete daily sales and monthly statements.

We appreciate your patience and understanding



RuthEdna Keys/LCM

By July 6 all employees and product from the Marson and Marson location in downtown Chelan will have moved to the Lake Chelan Building Supply store located at 155 Chelan Falls Highway, Chelan. Last day for business for Marson & Marson at the corner of Bradley and Wapato Avenue will be Friday, June 26.

as we work to move from one store to the other over the next 30 days. We are excited for the new opportunities in front of us with this change. Thank you for continuing to help us build better communities. LCBS Manson location: 585 E. Wapato Way,



Manson; LCBS Chelan location, 155 Highway 150 (across from Trout/Blue Chelan), Chelan.

Need help? Get help at the 'resource drive on June 27

Chelan PUD and community partners are hosting drive-thru event

SUBMITTED BY CHELAN COUNTY PUD

WENATCHEE - Chelan County families can get help with everything from paying their utility bill to finding fun things to do with kids during summer break at a "Resource Drive" on Saturday, June 27. The drive-thru event is noon to 2:30 p.m. in the Town Toyota Center parking lot, 1300 Walla Walla Ave., Wenatchee

Chelan County PUD is teaming up with community partners for the first-time event. Free resources will range from tips for customers to help save energy and lower power bills to a take-home box of fun activities to help children fill summer vacation hours. Chelan PUD customers will receive a "care package," from their hometown utility.

PUD staff will offer energy-saving tips, help for customers on paying their utility bills, a list of "hot spots" offering free internet access and help applying for a free parking pass to use at Daroga, Lincoln Rock and Wenatchee Confluence state parks. You also can learn about downloading our new app, Current, to be safe on the water by keeping Lake Chelan level and Columbia River conditions at your fingertips.

To keep everyone safe, visitors will drive past a series of stations in the parking lot, staffed by volunteers in protective gear. Those attending are asked to wear masks and stay in their car. Masks will be available for those needing one. Chelan-Douglas Health District has endorsed the format as a preview for events in the future.

Radio station La Nueva is a co-sponsor and other community organizations taking part include: Wenatchee School District, Molina Health Care, Numerica Credit Union and Confluence Health.

455 cases of virus in two county area

EAST WENATCHEE - As of Monday, June 22 there are 285 positive cases, up from 274 positive cases of COVID19 in Chelan County on June 15, and 193 cases, up from 181 cases in Douglas County. New cases in Chelan and Douglas County in the last seven days is 21. The number of deaths remains at 9.

The age groups with cases are: 0-19 58 cases, 209 cases in the 20-39 age group, up from 199; and 142 cases in the 40-59 age group up from 135. There are 53 cases in the 60-179 age group and 16 in the 80 plus age group.

Entiat is holding at one case, Bridgeport is holding at four cases. Chelan has 30 cases (increase of three), Manson 8 (no increase), Chelan Falls has 19 (no increase), Orondo 9 (no increase) and East Wenatchee 160 (was 148). Chelan and Douglas counties are in They are now in a modified Phase 1.5.

As of June 16 Okanogan County has 79 cases up from 74, and two deaths. They are now in Phase 2.

Social Distancing and wearing a mask is good, out of concern for preventing viral spread to others versus catching the virus from someone else.

Advertisement for Chelan Valley HOPE and Lake Chelan Food Bank. Includes text: 'We take Donations for Chelan Valley Hope and Lake Chelan Food Bank', 'Chelan Valley HOPE', 'Non Food Items needed: Baby Wipes, Diapers, Toilet Paper, Travel Size Toiletries, Shampoo, Conditioners, Dish Soap, Laundry Soap', 'Lake Chelan Food Bank', 'Lake Chelan Mirror', 'Monday-Friday - 9 a.m. - 5 p.m.', '310 E. Johnson Ave. • Chelan • 682-2213', 'Across from the Lake Chelan School District office'.

EVENTS

CONTINUED FROM PAGE 1

mask and gloves throughout the market and sanitize hands between food handling and payment transactions. CEFM customers are asked to: Send only one person per household to the market, when possible. Leave pets at home. Wash or sanitize hands before entering the farmers market and wear a cloth face covering in the market, as well as protective gloves. The market is located on the corner of S. Emerson and Wapato Streets, between the Riverwalk Inn and Riverwalk Park. For info: www.chelanfarmersmarket.org

Link Transit food bank drive: June 26, 27

WENATCHEE - Link Transit will be having a Stuff The Bus event Friday and Saturday, June 26 and 27, from 9 a.m. - 6 p.m. at the Wenatchee Grocery Outlet to benefit both Chelan Douglas Community Action

Council and Serve Wenatchee. Both food and monetary donations will be accepted. They are hoping to make up for some of our lost Postal Carriers Drive donations which had been canceled due to COVID-19.

Chelan Saturday Farmer's Market: June 27

CHELAN - The Chelan Saturday Farmer's is now open for its 2020 season. It is located at 112 E. Johnson Avenue, and opens at 8 a.m. You will find locally grown organic food and crafts.

Submitting your Lake Chelan Valley Event

Email to your non-profit event to: ruthk@lakechelanmirror.com, subject line LCM Events. Deadline: Friday at 3p.m. Be sure and include date, time, place and cost if any.

Lake Chelan Golf Club, Ladies Division announces scholarship winners

SUBMITTED BY LAKE CHELAN GOLF CLUB, LADIES DIVISION

CHELAN - The Lake Chelan Golf Club, Ladies Division proudly announces the 2020 recipient of the Ladies Golf Club Scholarship. This scholarship is awarded to a senior girl on the Chelan golf team who plans to further her education after high school. It is based on academic achievement, extra-curricular activities, and community involvement. This year one \$750 scholarship is being awarded to Chelan's 4 year golf team participant for the Chelan High School golf team. The winner of a \$750 scholarship is Kaylin Boykin.

Kaylin is the daughter of Jay Boykin and Ann Baird. Kaylin has maintained a 3.5 GPA while participating in a number of activities including Golf, Cheer, and Soccer.

Kaylin was a 4 year member of the CHS golf team. Head golf coach Kirk Einspahr is quoted "I can say that Kaylin is a top-notch person, both in and out of the classroom."

Kaylin plans to attend Eastern Washington University next fall with a focus on Elementary Education and Psychology.

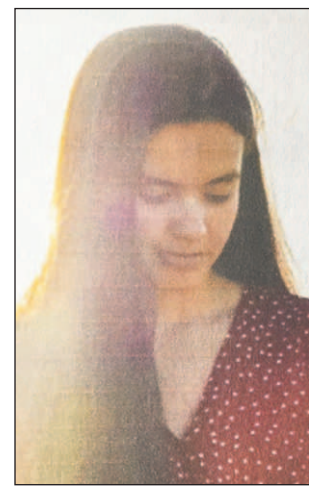
The Lake Chelan Golf



Kaylin Boykin

Club, Ladies Division would like to congratulate Kaylin and thank her for being such a wonderful ambassador for promoting women in golf.

MANSON - The Lake Chelan Golf Club, Ladies Division proudly announces the 2020 recipient of the Ladies Club Golf Scholarship. This scholarship is awarded to a senior girl on the Chelan and Manson golf team who plans to further her education after high school. If there are no golf team members, the association has chosen to award a scholarship to a student athlete. Such is the case this year for Manson High School. The scholarship is also based on academic achievement, extra curricular activities and com-



Nadia K. Verduzco Farias

munity involvement. This year's winner of the \$750 scholarship is Nadia K. Verduzco Farias.

Nadia is the daughter of Oracio Verduzco Chavez and Norma Verduzco Farias.. She has maintained a 3.3 grade point average while participating in multiple school activities, athletics, and community projects.

Nadia plans to attend Western Washington University to study in Elementary and Secondary Education.

The Lake Chelan Golf Club, Ladies Division congratulates Nadia and thanks her for being such a wonderful ambassador for promoting women in athletics.

Help available for Chelan, Douglas County veterans

WENATCHEE - Tony Sandoval is the Chelan County Veterans Service Officer. He may be reached at 509-664-6801.

EAST WENATCHEE - Sarah Simonson the Veterans Service Officer for Douglas County, is avail-

able for appointments in her office at 211 11th St. NE in East Wenatchee. Call her at 509-683-3605. You can also find her on Facebook at: https://www.facebook.com/douglas-countyvsvo

Advertisement for Aging & Adult Care of Central Washington. Includes text: 'Aging & Adult Care OF CENTRAL WASHINGTON', 'NEW LOCATION 170 9th St. NE Suite 100 East Wenatchee 509.886.0700', 'During this challenging time, caring for our relatives, friends and neighbors takes on new meaning. Aging & Adult Care is here to support communities with services and resources. Please contact us at (509) 886-0700.', 'In-Home Care Options • Home-Delivered Meals • Family Caregiver Support • Medical Equipment', 'Serving Adams, Chelan, Douglas, Grant, Lincoln and Okanogan Counties Offices in East Wenatchee, Moses Lake and Omak 1-800-572-4459 • www.aaccw.org'.

Advertisement for News With Us. Includes text: 'Share Your News With Us', 'Email it to lcmirror@gmail.com or call 682-2213'.

# CHS Class of 2033 graduates pre-school



RuthEdna Keys/ LCM

Morgen Owings Elementary Prechool graduated 28 students this spring, who will become first graders this fall at MOE.

## CHELAN HIGH SCHOOL SPORTS NEWS

### Longmire named girls basketball head coach

SUBMITTED BY ROB RAINVILLE, CHELAN HIGH SCHOOL

Chelan Athletics would like to announce the hiring of Nick Longmire as our new Girls Basketball Head Coach at Chelan High School.

Nick graduated from Tahoma High School, and he has coached as an assistant coach in both the Tahoma School District and the Lake Chelan School District. Nick has been a high school teacher and is currently the campus pastor at the Christ Center Chelan.

Nick also has a degree in Sports Psychology, and he has some great ideas and plans on team building, mental preparation for competing, and building strong routines to make student-athletes more confident.

Nick has been a part of our girls' basketball

program the past 2 years, and he is extremely excited about this opportunity. Nick knows what it will take to get our program better which includes plans to work with our coaches, our schools, and our community to get lots of girls, of all ages, learning and playing basketball.

Nick said: "I am honored and extremely excited to work with the girls in our basketball program and all the girls in our community to be future Chelan Goats."

### Chism named new head wrestling coach

Chelan Athletics would like to announce the hiring of Pat Chism as our new Head Wrestling Coach at Chelan High School.

Pat graduated from Chelan High School, and he has coached as an assistant coach with the wrestling program at Chelan High School the past 12 years. Pat is currently a firefighter and the squad boss on the Entiat Hotshot crew.

Pat has great passion for

Chelan wrestling. Pat has the experience and has put in the time and effort proving he can be a great head coach of our wrestling program.

Pat said: "I am honored to represent the sport of wrestling at Chelan High School and in the Lake Chelan Valley. I plan to push these young men to become better student-athletes and help promote the sport of wrestling in our community. We all know the sport of wrestling is one of the toughest sports to compete in, and I look forward to working with this great community in supporting these hard-working student-athletes in our program."

### Callero named head boys' basketball coach

Chelan Athletics would like to announce the hiring of Tony Callero as our new Head Boys' Basketball Coach at Chelan High School.

Tony played and graduated from Central Washington University. He has

14 years of high school coaching experience and 24 years of successful teaching. Tony has also coached collegiately at Seattle University as an assistant coach. Besides being a basketball coach and teacher at Auburn High School, Tony has run the Auburn Basketball Academy as well as co-founded the Auburn Select Basketball league.

We are very excited for Tony to join our athletic staff, as well as our teaching staff here at Chelan High/Middle School. He has great experience in coaching basketball, and we are super excited about his knowledge and experience in getting all ages of kids playing basketball throughout the year.

Tony will take on teaching duties for both Chelan High and Middle School starting this fall.

Tony said: "I am excited to begin a new journey as the Head Boys' Basketball coach and teacher at Chelan. I will be contacting players soon and we will be living full time in Chelan starting June 19, 2020. Go Goats."

## Lake Chelan Boating Club honors local students with scholarships

SUBMITTED BY LAKE CHELAN BOATING CLUB

MANSON - The Lake Chelan Boating Club (LCBC) is proud to announce the winners of the LCBC 2020 Scholarships, awarded to outstanding local high school graduating seniors to be used at an accredited college or trade school.

Congratulations to our local students Bryce La Mar, Tobin Wier and Amelia Bordner.

The LCBC Scholarship Committee had many excellent applications to choose from and a six-person committee reviewed and scored the applications.

Bryce and Tobin will each receive a \$500 scholarship from the LCBC and Amelia will receive a \$250 scholarship.

Tobin is the son of Pete and Kari Wier, a recent graduate from Chelan High School. He was selected for his excellent essays, outstanding academic

achievements, school involvement and dedication and service to his community. Tobin will attend Montana State University this Fall to pursue a degree in Aviation and Business Marketing.

Amelia is the daughter of Burke and Jennifer Bordner, and a recent graduate from Chelan High School. Amelia was chosen for her excellent essays, outstanding academic performance, and community service. Amelia will attend Biola University.

Bryce is the son of Brett La Mar, and a recent graduate of Manson High School. Bryce was chosen for his outstanding academic achievements, excellent essays and proven service and dedication to his community. Bryce will attend Moody Bible Aviation to pursue a degree in Missionary Aviation Technology.

The LCBC wishes all scholarship winners a bright and promising future.

## TEE TIME

SUBMITTED BY SHERRY FISK, LAKE CHELAN LADIES GOLF CLUB TEE TIME

June 18 CHELAN - The course is in full swing, the weather is great and C.J.'s on the Course is serving food and drink out on the deck. It felt mostly normal. There are distancing rules, but it was great.

This week's competition was Medal Play (low gross and net of field and low net by division).

Twenty-one players were in the mix and the winners were:

Low Gross of field: April Talley, 83.  
Low Net of field: Candace Farnsworth, 71.

Division 1: First Place, Carol Ferguson, 72. Second place, Jaclyn Starr-Evans, 76.

Division 2: First Place, Julie Allison, 73. Second Place, Janet Foyle, 75.

Division 3: First Place, Bernie Rayner, 74.

Birdies were made by

Carol Ferguson on hole 7 and April Talley on hole 1. The chip-in girls this week were Carol Ferguson on hole 7 and Jaclyn Starr-Evans on hole 10.

Next week's competition is All Fours (Total gross scores of all par 4s, less ½ your handicap.) Please plan on staying afterwards for a short meeting outside in your carts down by the cart barn so we can be appropriately separated.

Tee time is 8:30 a.m. Please check in by 8 a.m.

## Don't forget to renew your subscriptions this spring

**Wenatchee Business Journal**  
Serving the North Central Washington Business Community for over 40 years!

- Business News
- BNCW News
- Keeping Up With People
- Top Properties
- Business Opinions

There's something for everyone in the local newspaper

- Local news
- Local school news
- Local sports
- Local arts & entertainment
- Opinion & editorials
- Meeting notices
- Event notices
- Public & legal notices
- Outdoor activities
- Health tips
- Online Access for all newspapers
- Breaking News

[lakechelanmirror.com](http://lakechelanmirror.com)

**BUSINESS/SERVICES • HEALTHCARE DIRECTORY**

### INSURANCE

*You're healthy ... until you're not*

- Got questions about Medicare?
- Turning 65?
- Retiring soon?

Give Kelly Allen a call  
**509-888-9038**

Kelly@KellyAllenAgency.com • www.KellyAllenAgency.com

### PEST CONTROL

STEVE'S PEST CONTROL

Over 35 years of experience!

- Full Service Pest Control
- Free Inspections
- Crawl Space Repairs

509-439-0358

glenhelmick@gmail.com

Add your Business or Service to this Directory

Call Lindsay  
509-860-7301 or  
Ruth - 682-2213

### Wenatchee Business Journal Subscription Rates for 12 months

\$24 1 year     \$35 2 years - Chelan & Douglas Counties  
 \$28 1 year Outside Chelan/Douglas     \$48 1 year Out of State

---

**Community newspaper Subscription rates:**

Print and Premium on-line access - **\$45 per year**

**REGORD**     **ECHO**     **HERALD**     **MIRROR**

Print only - **\$40 per year**

**REGORD**     **ECHO**     **HERALD**     **MIRROR**

On-line only - **\$40** – includes E-edition of paper exactly as printed

**REGORD**     **ECHO**     **HERALD**     **MIRROR**

Print only out of state - **\$52 per year**

**REGORD**     **ECHO**     **HERALD**     **MIRROR**

Out of state Premium/E-Edition on-line - **\$40 per year**

---

Name of person ordering: \_\_\_\_\_

Address: \_\_\_\_\_

Email: \_\_\_\_\_ Phone: \_\_\_\_\_

Send gift subscription to: \_\_\_\_\_

Address: \_\_\_\_\_

Email: \_\_\_\_\_ Phone: \_\_\_\_\_

Payment information (pay by credit card or check):

Credit Card number: \_\_\_\_\_ **Paying by check?**

Exp: \_\_\_\_\_  Visa  Mastercard  Discover  AMEX  Check enclosed:

**MAIL TO:**  
NCW Media Inc.,  
Attn: Circulation  
PO Box 249  
Chelan, WA 98816  
**OR CALL with your Card #**  
509-293-6780  
FAX: 509-682-4209  
**EMAIL:**  
circulation@lakechelanmirror.com

OBITUARIES

Geraldine (Gerri) Ruthella Brooks

Geraldine (Gerri) Ruthella Brooks, 92, passed away June 13, 2020, at Regency Wenatchee. Gerri was born March 20, 1928 to Charles E. Boyles and Gertrude (Chase) Boyles in Chelan. She attended all twelve grades at Chelan schools, graduating in 1946. She was the Chelan Princess to the Manson Apple Blossom Festival in 1946.



Gerri married Lee A. Brooks on September 8, 1946, at Chelan Methodist Church, and they continued residing in Chelan.

Gerri worked at the Ruby Theatre, L.E. Radley Ins., Penney's Store, Trout & Beebe packing sheds, and Highland House Nursing Home (later Regency Manor). She moved to the Yakima Valley and worked in several nursing homes as a cook and certified dietitian before retiring in 1991. She returned to Chelan in 1992.

Gerri resided, and received exceptional care, at Heritage Heights and Regency Manor Chelan (now Regency Wenatchee) from 2008 until her death.

She is survived by five children: Susan (Alvin) Anderson, Manson; Randy (Anne) Brooks, Chelan; Cynthia Brooks, East Wenatchee; Audrey (Ron) Scott, Gardnerville, Nevada; and Terri Brooks, Wenatchee. She has eight grandchildren and eleven great grandchildren.

Gerri was a member of the Chelan Christian Church. Donations in Gerri's name can be made to the Chelan Senior Center, or other area organizations supporting seniors, and are much appreciated.

Graveside services will be at Chelan Fraternal Cemetery for immediate family. Services coordinated by Precht Rose Chapel, Chelan.



DEATH NOTICES

Kenneth W. Porter

Kenneth W. Porter, 87, of Chelan, Washington, passed away on June 13, 2020.

Please feel free to leave any thoughts and memories for the family at www.prechtrose.com. Services are entrusted to Precht Rose Chapel of Chelan.

Jean Copple

Jean Copple, 95, of Monroe, Washington, passed away on June 16, 2020.

Services by A Sacred Moment Funeral Home of Everett.

Kenneth Lee Zimmerlee

Kenneth Lee Zimmerlee, 81 of Oroville, Washington passed away on June 14, 2020.

Services under the direction of the Neptune Society.

Duane Collinge

Duane Collinge, 89 of Wenatchee, Washington passed away on June 13, 2020.

Services under the direction of the Neptune Society.

SENIOR MEALS MENU

Chelan Senior Center

CHELAN - The Chelan Senior Center is closed, however meals are being given out on a takeout bases.

Senior Meals

Call (509) 888-4440 by 9 a.m. Monday thru Thursday to order your meal. Meals can be picked up between 10:30 and 11:30 a.m. at the Senior Center located at 534 E. Trow Avenue.

Thursday, June 25

Hearty Turkey Noodle Soup, Tossed Veggie Salad, Fresh Fruit, WW Roll, Dessert

Friday, June 26

BBQ Chicken, Macaroni Salad, Broccoli Cuts, Pea Salad, Fruit Tray, WW Roll, Dessert

Monday, June 29

Hot Dog, Baked Beans, Coleslaw, Carrot Raisin Salad, Dessert

Tuesday, June 30

Meatballs, Mashed Potatoes, Mixed Vegetables, Cucumbers & Sour Cream, Apricots, WW Roll, Dessert

Wednesday, July 1

Veggie Lasagna, Garden Salad, Waldorf Salad, Roll, Dessert

Is Jay Inslee the Governor of Seattle?

The Radical Left Has Always Been Violent. When thinking about and discussing the Seattle situation in an honest way, we are not talking about Mahatma Gandhi or Rev. Dr. Martin Luther King, Jr. Our situation is more akin to the Black Panthers, SDS (Students for a Democratic Society) and the Weatherman, all violent underground movements of the 1960s in response to the Vietnam War.

When watching the Seattle situation on nationwide television, what I see equates to anarchy. Yet, we have a governor paralyzed with fear at offending the radical left by calling in the state National Guard to take back the city center.

It is, after all, an election year and Jay Inslee needs the left moderate, left and far left votes, to defeat any Conservative challenge from rural Republican country, meaning most Washingtonians in rural and small towns.

The radical left wing of today acts exactly like the old fascists of Nazi Germany and Italy that weren't afraid to throw a few Molotov Cocktails into the established order. In fact, anything that would gum up the works of the status quo was a good thing, in the minds of fascists.

Here is the oxymoron.



APPLES TO APPLES Gary Bégin

The loosely affiliated group calling itself "AntiFa," meaning "anti-fascist" is acting no better than Hitler and Mussolini. Throw in some good ol' Joe Stalin and a sprinkling of Mao Tse Tung and you've got one heckuva coalition of evil.

The Communists were just as violent as the fascists when it came time to take over the farm, so to speak. They weren't against burning the barn full of hay in order to try growing a new batch collectively, thus starving the same citizens they were there to allegedly "save" from the ruthless capitalist pigs, otherwise known as the business community.

I ask all Democrats to honestly assess the ethics of allowing anarchists to literally control a part of the state's biggest city without the governor exerting reason and force, if needs be, to retake the city for the good of the taxpayers and honest citizens.

Is this the man we want to stay in power and do nothing to control the criminals who are blatantly trespassing, van-

dalizing and otherwise thumbing their noses at society?

Is Jay Inslee enough of a leader to put down civil unrest? I am 100% sure any of the Republican candidates running for governor would have acted when the takeover started two weeks ago. Maybe the Republican Party of Washington needs to assert the right of their constituencies in the business, religious, military and conservative communities to have a free and open Seattle where commerce isn't interrupted by hoodlums, political thuggery or provocateurs out to get whatever they can in money and power?

The far left wants a say in daily life so badly they are willing to break the law to get some kind of legitimacy they can't seem to get at the ballot box. Someone on the far left smells a chance to make Washington the first officially Communist state. The Constitution is not law to them, thus they are "outlaws" and apparently, proud of it. We, the people, are loyal to peaceful change of the government, or peaceful continuation of the current government, whichever we decide in November. We, the people, believe in upholding the Constitution against foreign and domestic terrorists.

Once again, President Trump is correct, AntiFa is a terrorist group and needs to be ridded from occupying the streets of Seattle.

Representative Matt Shea (R-Spokane Valley) is right when he calls for a "51st State."

Adopting Shea's manifesto and establishing the 51st state of Liberty, means (sarcastically) that Inslee could not be our governor too, just as he is acting as not Seattle's governor now. Shea wants a state referendum to establish our right to freedom in the establishment of a new government as opposed to being continuously held hostage by the current one. The opportunists on the left must be quelled and placed in express trains back to Berkeley. They can have their far left state of Northern California, whatever it takes, just stop physically choking our collective freedom for the sake of a fantasy based in some socialist professor's mind.

It is indeed, "give us Liberty or give us death."

Gary Bégin's opinions are not the official views of NCW Media. To reach him email: gary@ncw-media.net. Any email is subjected to publication as a "letter to the editor" unless explicitly requested not to do so.

Obituaries & Death Notices also appear online lakechelanmirror.com

OBITUARY & MEMORIAL POLICIES

NCW MEDIA, INC.

An obituary is a way for family member(s) to commemorate a loved one's life and to notify the larger community of the deceased. Obituaries are also used for historical and ancestral data.

Memorials are another way of letting the community know about the life and memories of the person who has died. A Memorial is different from an obituary. An obituary is usually current while a memorial can be written later.

Obituaries and memorials need to be typed and emailed no later than Friday by 4:00 p.m. to be placed in the next available issue(s). Please call for cost of an obituary and which NCW paper(s) that it will be placed in to.

Cost of the obituary/ memorial is due at the time of placement. Funeral homes and chapels can submit obituaries by Noon on Monday, unless a holiday.

Obituaries are priced per word while Memorial ads are per column-inch.

For info call Ruth 509-682-2213, or email ruthk@lakechelanmirror.com

Due to the COVID19 Virus, churches have suspended Saturday and Sunday Services, Sunday School and meetings.

Please call or email your church listed below if you need more information. May you take time to pray, rest, meditate and reflect during this time. Stay well, stay strong and stay informed.



CHURCH GUIDE

New to the area? On Vacation? These churches welcome you!



CHELAN

CHELAN CHRISTIAN CHURCH
Morning Worship 10 am
682-2025 • 210 E. Wapato Ave.
Pastor Mark Wilton

CHURCH OF THE NAZARENE

Sunday School 10 am
Worship 11 am & 6 pm
Youth Group - Friday 7 pm for 13-18 years of age
682-5135 • Sanders St. & Okanogan Ave.

LAKE CHELAN LUTHERAN CHURCH

Worship 9:30 am
Sunday School following Worship Service
682-9063 • 216 W. Nixon Ave.

LAKE CHELAN UNITED METHODIST CHURCH

Worship 10 am
682-2241
Corner of Johnson & Emerson

CHELAN

LIVING STONE CHURCH

"Gathering in our uniqueness,
United in our Purpose."
Scott Morris, Senior Pastor
SUNDAY ACTIVITIES
Gathering -10:00 am

(Children's Church & Nursery available)

Adult Bible Study - Noon
WEDNESDAY ACTIVITIES
Kids ROCK 6:10-7:40 pm (K-5th grade, Oct-March)

WE GATHER at 216 N Emerson
(2nd Story-Chelan Public Library)

OUR OFFICE LOCATION
105 N Emerson - Suite 204, Chelan • 509-682-5953
For more information about us and our activities
visit www.lscchelan.org

ST. ANDREW'S EPISCOPAL CHURCH

Worship 10 am
120 E. Woodin Ave., PO Box 1226, Chelan, WA 98816
682-2851 • www.standrews-chelan.org

ST. FRANCIS DE SALES CATHOLIC CHURCH

English Mass Saturday 5 pm • Spanish Mass Saturday 7 pm
English Mass Sunday 9 am
Spanish Mass Sunday Noon
Rev. Rogelio Gutiérrez, Pastor
682-2433 • Next to Safeway

ENTIAT

ENTIAT FRIENDS CHURCH

Pastor Mark McDonald
509.784.1342

email: entiatfriends@nwi.net

2848 Entiat River Road

Sunday morning Bible Classes 9:45 am

Sunday morning Worship 11 am

Sunday morning Worship (summer months) 10 am

Wednesday Shared Dinner 6 pm

Wednesday Programs Adults/Youth/Children 7 pm

"With men this is impossible;

but with God

all things

are possible."

-Matthew 19:26

MANSON

MANSON UNITED METHODIST COMMUNITY CHURCH

Sunday Worship 10 am

With coffee following service

687-3311

Green & Boetzkes

'We are a come as you are church'

NORTH SHORE BIBLE CHURCH

Sunday Worship 9:30 am

Nursery (birth - 3 years) 9:30 am

Kidz Church (4 years-5th Grade) 9:30 am

687-3636 • 123 Wapato Point Parkway

www.northshorebc.org

Craig Rayment, Sr. Pastor

BREWSTER

HOPE LUTHERAN CHURCH - LCMS

Sunday Worship 11 am

Holy Communion 1st, 3rd, & 5th Sunday

Bible Study & Sunday School 10 am

689-3106 • 1520 Sunset Drive

Kevin Moore, Pastor

TO PLACE YOUR CHURCH IN THIS GUIDE: RUTH 682-2213 • ruthk@lakechelanmirror.com

**NCW MARKET.COM**  
CLASSIFIED ADS

Business Journal  
**ECHO RECORD MIRROR HERALD**

Place your ad online at [NCWMARKET.COM](http://NCWMARKET.COM) or call 509-548-5286 - Leavenworth Echo/Cashmere Valley Record  
509-682-2213 - Lake Chelan Mirror • 509-689-2507 - Quad City Herald

# CLASSIFIEDS

## Administrative

Publisher's notice

**CORRECTIONS:** NCW Media Inc. shall be responsible for corrections to advertisements on the first publication only. The advertiser will be responsible for corrections made thereafter. NCW Media Inc. shall not be responsible for slight changes or typographical errors that do not lessen the value of the advertisement. NCW Media Inc.'s liability for other errors or omissions in connection with an advertisement is strictly limited to the publication of the advertisement in any subsequent issue. No monetary refunds will be given. For more information call (509) 548-5286.



**PUBLISHER'S NOTICE**  
All real estate advertising in this newspaper is subject to the Fair Housing Act, which makes it illegal to advertise "any preference, limitation or discrimination based on race, color, religion, sex, handicap, familial status or national origin, or an intention to make any such preference, limitation or discrimination." This newspaper will not knowingly accept any advertising for real estate that is in violation of the law. To complain of discrimination call HUD at 1-800-669-9777. The number for hearing impaired is 1-800-927-9275.

1	7	2	6	4	3	5	9	8
8	3	6	5	2	9	4	7	1
9	5	4	7	8	1	3	2	6
2	9	5	4	6	8	7	1	3
4	8	3	9	1	7	2	6	5
6	1	7	2	3	5	9	8	4
7	6	9	8	5	4	1	3	2
3	4	8	1	7	2	6	5	9
5	2	1	3	9	6	8	4	7

## Announcements

Lost & Found

**LOST AND FOUND** can be placed in our local newspaper and online for **ONE week for FREE.** Limit 30 words

Leavenworth/Cashmere  
509-548-5286  
or  
Lake Chelan Mirror  
509-682-2213  
or  
Quad City Herald  
509-689-2507

Deadline is Noon on Friday

## Happy Ads

**HAVE A SPECIAL EVENT COMING UP? PLACE IT IN OUR CLASSIFIEDS IN THE PAPER AND ONLINE**

24/7 at [www.NCWMarket.com](http://www.NCWMarket.com)

## HAPPY BIRTHDAY CONGRATULATIONS!

## WILL YOU MARRY ME?

**HAPPY ANNIVERSARY**  
Only \$15 for 30 days includes 3 photos

Chelan-Brewster  
682-2213 or  
Leavenworth-Cashmere  
548-5286

## Employment

Help Wanted

**Find the Best Qualified Local Employee in our Classifieds Ads.**

Place your ad online 24/7 at [www.NCWMarket.com](http://www.NCWMarket.com) It is easy, just register and pay online.

Print only? Deadline is Monday by Noon for all papers:

Lake Chelan Mirror  
Quad City Herald  
683-2213  
Leavenworth Echo  
Cashmere Record  
548-5286

Your ad will appear online and in the newspapers for one low price!

**For Sale**  
Antiques & Collectibles

**Get cold hard cash for your Antiques and Collectibles by putting them in our classifieds.** Place your ad with pictures online 24/7 at [NCWMarket.com](http://NCWMarket.com) Just register and pay online and you are done. Your ad will appear online and in the newspaper for one low price.

Deadline Monday at Noon for all papers:

**Lake Chelan Mirror  
Quad City Herald  
682-2213** or call  
**Leavenworth Echo  
Cashmere Record  
548-5286**

**Douglas County PUD** has an opening for:  
On-Call Relief Fish Counter  
\$21.40/ hour  
Details at [www.douglaspu.org](http://www.douglaspu.org)

**Work Wanted**

**RB's Custom Tractor Works**  
Disking - Tilling  
Mowing  
Hourly Tractor Work  
Free estimates  
33 years experience  
Cell 509-679-2469  
Bus license  
#602-781-946



**Work Wanted**

**NCW Media Newspapers**  
We have excess office furniture available. Items left are 2 large wood desks with side desk attachment, One metal desk, one large wood conference table, a large counter approx. 7' x 3 1/2' tall with removable shelves, A wood credenza and a free 4' x 4' white board. All other items are \$25.00 per item. Call to arrange a time to examine or pick up. All items located in Cashmere. We also have a small safe that is FREE to a good home. It has not been opened for many years because we do not know the combination. It could include valuable material we don't know. For information call Leavenworth Echo, 548-5286 or Bill, at 509-670-1837. Also see photos on [NCWMarket.com](http://NCWMarket.com)

**lakechelanmirror.com**  
and on Facebook

## For Sale

Antiques & Collectibles

**Get cold hard cash for your Antiques and Collectibles by putting them in our classifieds.** Place your ad with pictures online 24/7 at [NCWMarket.com](http://NCWMarket.com) Just register and pay online and you are done. Your ad will appear online and in the newspaper for one low price.

Deadline Monday at Noon for all papers:

**Lake Chelan Mirror  
Quad City Herald  
682-2213** or call  
**Leavenworth Echo  
Cashmere Record  
548-5286**

**Furniture**

**NCW Media Newspapers**  
We have excess office furniture available. Items left are 2 large wood desks with side desk attachment, One metal desk, one large wood conference table, a large counter approx. 7' x 3 1/2' tall with removable shelves, A wood credenza and a free 4' x 4' white board. All other items are \$25.00 per item. Call to arrange a time to examine or pick up. All items located in Cashmere. We also have a small safe that is FREE to a good home. It has not been opened for many years because we do not know the combination. It could include valuable material we don't know. For information call Leavenworth Echo, 548-5286 or Bill, at 509-670-1837. Also see photos on [NCWMarket.com](http://NCWMarket.com)

**Real Estate**  
Orchards & Farms

We have buyers for your Pear, Apple and Cherry Orchards!  
509-669-4500  
[information@nwi.net](mailto:information@nwi.net)

**Rentals**

**MORNING SUN PARK APARTMENTS**  
345 Madeline Road, Manson  
1 bedroom apartment \$478.00  
2 bedroom apartment \$573.00  
3 bedroom apartment \$660.00  
4 bedroom apartment \$736.00  
5 bedroom apartment \$812.00

Must have earned a minimum of \$3,000.00 in the last 12 months in agricultural income to qualify  
Ex: Packing shed, orchard, vineyard, some truck driver positions or forklift call to inquire

**Real Estate**  
Orchards & Farms

We have buyers for your Pear, Apple and Cherry Orchards!  
509-669-4500  
[information@nwi.net](mailto:information@nwi.net)

**Rentals**

**MORNING SUN PARK APARTMENTS**  
345 Madeline Road, Manson  
1 bedroom apartment \$478.00  
2 bedroom apartment \$573.00  
3 bedroom apartment \$660.00  
4 bedroom apartment \$736.00  
5 bedroom apartment \$812.00

**Real Estate**  
Orchards & Farms

We have buyers for your Pear, Apple and Cherry Orchards!  
509-669-4500  
[information@nwi.net](mailto:information@nwi.net)

**Rentals**

**MORNING SUN PARK APARTMENTS**  
345 Madeline Road, Manson  
1 bedroom apartment \$478.00  
2 bedroom apartment \$573.00  
3 bedroom apartment \$660.00  
4 bedroom apartment \$736.00  
5 bedroom apartment \$812.00

**Wanted to Rent**

Want to rent: furnished room with kitchen, bath and laundry privileges for elderly gentleman with a large, friendly service dog. Call Larry 509-548-7220, if no answer, please leave a message.

**Vehicles**  
Automobiles

For sale: Fix or for parts: 2002 FORD Explorer XLT 4.0L V6 4WD, pewter. Engine runs, has dents in passenger side doors, but other body parts are good. High mileage, charging, heater core, springs problems, 2 auto windows broken. W/ title. 509-571-5302. \$900 OBO

**Vehicles**  
Automobiles

For sale: Fix or for parts: 2002 FORD Explorer XLT 4.0L V6 4WD, pewter. Engine runs, has dents in passenger side doors, but other body parts are good. High mileage, charging, heater core, springs problems, 2 auto windows broken. W/ title. 509-571-5302. \$900 OBO

**Vehicles**  
Automobiles

For sale: Fix or for parts: 2002 FORD Explorer XLT 4.0L V6 4WD, pewter. Engine runs, has dents in passenger side doors, but other body parts are good. High mileage, charging, heater core, springs problems, 2 auto windows broken. W/ title. 509-571-5302. \$900 OBO

**Vehicles**  
Automobiles

For sale: Fix or for parts: 2002 FORD Explorer XLT 4.0L V6 4WD, pewter. Engine runs, has dents in passenger side doors, but other body parts are good. High mileage, charging, heater core, springs problems, 2 auto windows broken. W/ title. 509-571-5302. \$900 OBO

**Vehicles**  
Automobiles

For sale: Fix or for parts: 2002 FORD Explorer XLT 4.0L V6 4WD, pewter. Engine runs, has dents in passenger side doors, but other body parts are good. High mileage, charging, heater core, springs problems, 2 auto windows broken. W/ title. 509-571-5302. \$900 OBO

**Vehicles**  
Automobiles

For sale: Fix or for parts: 2002 FORD Explorer XLT 4.0L V6 4WD, pewter. Engine runs, has dents in passenger side doors, but other body parts are good. High mileage, charging, heater core, springs problems, 2 auto windows broken. W/ title. 509-571-5302. \$900 OBO

**Vehicles**  
Automobiles

For sale: Fix or for parts: 2002 FORD Explorer XLT 4.0L V6 4WD, pewter. Engine runs, has dents in passenger side doors, but other body parts are good. High mileage, charging, heater core, springs problems, 2 auto windows broken. W/ title. 509-571-5302. \$900 OBO

## Garage & Yard Sale



**CLEAR SOME SPACE WITH A** Fill your pockets with **CASH \$\$ AD** Let others know what items you are selling!

Go online now to Place your ad 24/7 at [www.NCWMarket.com](http://www.NCWMarket.com)

Print only? Deadline Monday at Noon for all papers

Lake Chelan Mirror  
Quad City Herald  
Call 682-2213

Leavenworth  
Cashmere  
Call 548-5286

**Rentals**

1 bedroom senior apartment

**Lake Chelan Community Apartments**  
509 E. Gibson Ave, Chelan  
Senior Housing (62 and older)

- Rent based on income (if eligible)
- Newly remodeled
- Close to medical facilities & stores
- On site new laundry facility
- No application fee

**Housing Authority of Chelan County**  
1555 S. Methow Street, Wenatchee  
**(509) 663-7421** (TDD equipped)

This institution is an equal opportunity provider and employer.

**Rentals**

1 bedroom senior apartment

**Lake Chelan Community Apartments**  
509 E. Gibson Ave, Chelan  
Senior Housing (62 and older)

- Rent based on income (if eligible)
- Newly remodeled
- Close to medical facilities & stores
- On site new laundry facility
- No application fee

**Housing Authority of Chelan County**  
1555 S. Methow Street, Wenatchee  
**(509) 663-7421** (TDD equipped)

This institution is an equal opportunity provider and employer.

**Rentals**

1 bedroom senior apartment

**Lake Chelan Community Apartments**  
509 E. Gibson Ave, Chelan  
Senior Housing (62 and older)

- Rent based on income (if eligible)
- Newly remodeled
- Close to medical facilities & stores
- On site new laundry facility
- No application fee

**Housing Authority of Chelan County**  
1555 S. Methow Street, Wenatchee  
**(509) 663-7421** (TDD equipped)

This institution is an equal opportunity provider and employer.

**Rentals**

1 bedroom senior apartment

**Lake Chelan Community Apartments**  
509 E. Gibson Ave, Chelan  
Senior Housing (62 and older)

- Rent based on income (if eligible)
- Newly remodeled
- Close to medical facilities & stores
- On site new laundry facility
- No application fee

**Housing Authority of Chelan County**  
1555 S. Methow Street, Wenatchee  
**(509) 663-7421** (TDD equipped)

This institution is an equal opportunity provider and employer.

**Rentals**

1 bedroom senior apartment

**Lake Chelan Community Apartments**  
509 E. Gibson Ave, Chelan  
Senior Housing (62 and older)

- Rent based on income (if eligible)
- Newly remodeled
- Close to medical facilities & stores
- On site new laundry facility
- No application fee

**Housing Authority of Chelan County**  
1555 S. Methow Street, Wenatchee  
**(509) 663-7421** (TDD equipped)

This institution is an equal opportunity provider and employer.

**Rentals**

1 bedroom senior apartment

**Lake Chelan Community Apartments**  
509 E. Gibson Ave, Chelan  
Senior Housing (62 and older)

- Rent based on income (if eligible)
- Newly remodeled
- Close to medical facilities & stores
- On site new laundry facility
- No application fee

**Housing Authority of Chelan County**  
1555 S. Methow Street, Wenatchee  
**(509) 663-7421** (TDD equipped)

This institution is an equal opportunity provider and employer.

**Rentals**

1 bedroom senior apartment

**Lake Chelan Community Apartments**  
509 E. Gibson Ave, Chelan  
Senior Housing (62 and older)

- Rent based on income (if eligible)
- Newly remodeled
- Close to medical facilities & stores
- On site new laundry facility
- No application fee

**Housing Authority of Chelan County**  
1555 S. Methow Street, Wenatchee  
**(509) 663-7421** (TDD equipped)

This institution is an equal opportunity provider and employer.

**Rentals**

1 bedroom senior apartment

**Lake Chelan Community Apartments**  
509 E. Gibson Ave, Chelan  
Senior Housing (62 and older)

- Rent based on income (if eligible)
- Newly remodeled
- Close to medical facilities & stores
- On site new laundry facility
- No application fee

**Housing Authority of Chelan County**  
1555 S. Methow Street, Wenatchee  
**(509) 663-7421** (TDD equipped)

This institution is an equal opportunity provider and employer.

**Rentals**

1 bedroom senior apartment

**Lake Chelan Community Apartments**  
509 E. Gibson Ave, Chelan  
Senior Housing (62 and older)

- Rent based on income (if eligible)
- Newly remodeled
- Close to medical facilities & stores
- On site new laundry facility
- No application fee

**Housing Authority of Chelan County**  
1555 S. Methow Street, Wenatchee  
**(509) 663-7421** (TDD equipped)

This institution is an equal opportunity provider and employer.

**Rentals**

1 bedroom senior apartment

**Lake Chelan Community Apartments**  
509 E. Gibson Ave, Chelan  
Senior Housing (62 and older)

- Rent based on income (if eligible)
- Newly remodeled
- Close to medical facilities & stores
- On site new laundry facility
- No application fee

**Housing Authority of Chelan County**  
1555 S. Methow Street, Wenatchee  
**(509) 663-7421** (TDD equipped)

This institution is an equal opportunity provider and employer.

**Rentals**

1 bedroom senior apartment

**Lake Chelan Community Apartments**  
509 E. Gibson Ave, Chelan  
Senior Housing (62 and older)

- Rent based on income (if eligible)
- Newly remodeled
- Close to medical facilities & stores
- On site new laundry facility
- No application fee

**Housing Authority of Chelan County**  
1555 S. Methow Street, Wenatchee  
**(509) 663-7421** (TDD equipped)

This institution is an equal opportunity provider and employer.

**Rentals**

1 bedroom senior apartment

**Lake Chelan Community Apartments**  
509 E. Gibson Ave, Chelan  
Senior Housing (62 and older)

- Rent based on income (if eligible)
- Newly remodeled
- Close to medical facilities & stores
- On site new laundry facility
- No application fee

**Housing Authority of Chelan County**  
1555 S. Methow Street, Wenatchee  
**(509) 663-7421** (TDD equipped)

This institution is an equal opportunity provider and employer.

**Rentals**

1 bedroom senior apartment

**Lake Chelan Community Apartments**  
509 E. Gibson Ave, Chelan  
Senior Housing (62 and older)

- Rent based on income (if eligible)
- Newly remodeled
- Close to medical facilities & stores
- On site new laundry facility
- No application fee

**Housing Authority of Chelan County**  
1555 S. Methow Street, Wenatchee  
**(509) 663-7421** (TDD equipped)

This institution is an equal opportunity provider and employer.

**Rentals**

1 bedroom senior apartment

**Lake Chelan Community Apartments**  
509 E. Gibson Ave, Chelan  
Senior Housing (62 and older)

- Rent based on income (if eligible)
- Newly remodeled
- Close to medical facilities & stores
- On site new laundry facility
- No application fee

**Housing Authority of Chelan County**  
1555 S. Methow Street, Wenatchee  
**(509) 663-7421** (TDD equipped)

This institution is an equal opportunity provider and employer.

**Rentals**

1 bedroom senior apartment

**Lake Chelan Community Apartments**  
509 E. Gibson Ave, Chelan  
Senior Housing (62 and older)

- Rent based on income (if eligible)
- Newly remodeled
- Close to medical facilities & stores
- On site new laundry facility
- No application fee

**Housing Authority of Chelan County**  
1555 S. Methow Street, Wenatchee  
**(509) 663-7421** (TDD equipped)

This institution is an equal opportunity provider and employer.

**Rentals**

1 bedroom senior apartment

**Lake Chelan Community Apartments**  
509 E. Gibson Ave, Chelan  
Senior Housing (62 and older)

- Rent based on income (if eligible)
- Newly remodeled
- Close to medical facilities & stores
- On site new laundry facility
- No application fee

**Housing Authority of Chelan County**  
1555 S. Methow Street, Wenatchee  
**(509) 663-7421** (TDD equipped)

This institution is an equal opportunity provider and employer.

**Rentals**

1 bedroom senior apartment

**Lake Chelan Community Apartments**  
509 E. Gibson Ave, Chelan  
Senior Housing (62 and older)

- Rent based on income (if eligible)
- Newly remodeled
- Close to medical facilities & stores
- On site new laundry facility
- No application fee

**Housing Authority of Chelan County**  
1555 S. Methow Street, Wenatchee  
**(509) 663-7421** (TDD equipped)

This institution is an equal opportunity provider and employer.

**Rentals**

1 bedroom senior apartment

**Lake Chelan Community Apartments**  
509 E. Gibson Ave, Chelan  
Senior Housing (62 and older)

- Rent based on income (if eligible)
- Newly remodeled
- Close to medical facilities & stores
- On site new laundry facility
- No application fee

**Housing Authority of Chelan County**  
1555 S. Methow Street, Wenatchee  
**(509) 663-7421** (TDD equipped)

This institution is an equal opportunity provider and employer.



**SUDOKU PUZZLE**

**FREE!** Savings include an American Standard Walk-In Tub. FREE! (500 Value)

**WALK-IN BATHTUB SALE! SAVE \$1,500**

- Backed by American Standard's 140 years of experience
- Ultra low entry for easy entering & exiting
- Patented Quick Drain™ Technology
- Lifetime Warranty on the tub AND installation, INCLUDING labor backed by American Standard
- 44 hydrotherapy jets for an invigorating massage

Limited Time Offer! Call Today!  
**866-612-7490**  
Or visit: [www.walkintubinfo.com/spm](http://www.walkintubinfo.com/spm)

			6		3	5	9	
8		6	5					
	5	4			1		2	
2	9							
	8	3				2	6	
							8	4
	6		8			1	3	
					2	6		9
	2	1	3		6			

© StatePoint Media  
Fill in the blank squares in the grid, making sure that every row, column and 3-by-3 box includes all digits 1 through 9.

**CROSSWORD PUZZLE**

THEME: THE 4TH OF JULY

**CROSS**

- Begone!
- Instinctive motive
- Barbershop supply
- Cover with asphalt
- Twist and distort
- Dismounted
- Tiny particle
- Like smell of burning rubber
- \*King of Great Britain when America won independence
- Same as pleaded
- "Well-\_\_ machine"
- \*Abigail Adams \_\_ Smith
- \*Preferred cooking device on the 4th
- They play dead
- Tiller's tiller
- Santa's reindeer
- Dwarf buffalo
- Smart ones?
- "\_\_ the hills and far away"
- Penicillin holder, e.g.
- Part of both levorotary and levorotary
- \*Like 4th of July
- Choler
- Egg dishes
- Actress Close
- \*Jefferson was three and Washington was \_\_
- Medal of Honor word
- Castle material
- \*Roman Candles and Fountains, e.g.
- Manuscript sheet
- Dirty money
- Type of wrench
- Charitable contribution
- Genesis twin
- Dad's lads
- General Services Administration
- Job for a body shop

**DOWN**

- Without a date
- \*American Revolutionary War spy, Nathan
- Miscellany
- Type of local tax
- French composer of "GymnopEdies" fame
- Steer clear
- Prefix for half
- \*U. S. personified
- Steak choice
- Power system
- Former times
- Saffron-flavored rice dish
- Stares
- Decorates with gold leaf
- Negative conjunction
- Jewish folklore creature
- "Superman" star
- Machu Picchu country
- Remove from Pinterest board
- Grieve
- \*Many retailers hold one for the 4th of July
- Sign of a saint
- \_\_ of Liberty
- Rooster's girlfriend
- \*13 of these at the start
- Give a green light
- \*What contestants did at Nathan's Hot Dog Eating Contest
- Official flower of the Kentucky Derby
- Ends of shoe laces
- "\_\_ a high note"
- What river did to bank
- Viola da Gamba, pl.
- Waiting pleasantness
- Aria, e.g.
- Comrade in arms
- \*It should never touch ground
- Official flower of the Kentucky Derby
- Riddle without solution
- Obscenity
- Like The Beatles

**OMAHA STEAKS**  
SINCE 1917

GET THE GRILLER'S BUNDLE  
INTRODUCTORY PRICE: \$79.99

- 4 (5 oz.) Butcher's Cut Filet Mignon
- 4 (4 oz.) Boneless Pork Chops
- 4 (4 oz.) Omaha Steaks Burgers
- 4 (3 oz.) Gourmet Jumbo Franks
- 4 (2.5 oz.) Potatoes au Gratin
- 4 (4 oz.) Caramel Apple Tartlets
- Omaha Steaks Seasoning Packet

\*4 MORE BURGERS FREE THAT'S 30 COURSES + DESIGNS & DECORS!

ORDER NOW! 1.833.406.1259 ask for 63281KOU  
[www.OmahaSteaks.com/Family588](http://www.OmahaSteaks.com/Family588)

\*Savings shown are suggested single item base price. Standard S&H applies. ©2020 Omaha Steaks, Inc. Exp. 9/30/20

© StatePoint Media

**NCW MARKET.COM**  
CLASSIFIED ADS

**See MORE CLASSIFIEDS & PUBLIC NOTICES on Page 6**

**Legals**

**Public Notices**

**SUPERIOR COURT OF THE STATE OF WASHINGTON IN AND FOR THE COUNTY OF CHELAN**  
**In Re the matter of the Estate of: RUSSELL B. GIBBS, Deceased.**  
**NO. 20-4-00173-04**  
**NOTICE TO CREDITORS**

The personal representative named below has been appointed as personal representative of this estate. Any person having a claim against the decedent must, before the time the claim would be barred by any otherwise applicable statute of limitations, present the claim in the manner as provided in RCW 11.40.070 by serving on or mailing to the personal representative or the personal representative's attorney at the address stated below a copy of the claim and filing the original of the claim with the court in which the probate proceedings were commenced. The claim must be presented within the later of: (1) Thirty days after the personal representative served or mailed the notice to the creditor as provided under RCW 11.40.020(1)(c); or (2) four months after the date of first publication of the notice. If the claim is not presented within this time frame, the claim is forever barred, except as otherwise provided in RCW 11.40.051 and 11.40.060. This bar is effective as to claims against both the decedent's probate and nonprobate assets. DATE OF FIRST PUBLICATION: June 24, 2020. Personal Representative: Bert Daggett, Attorney for the Personal Representative: /S/ CHARLES R. STEINBERG, WSBA, NO. 23980, Address for Mailing or Service: 323 N MILLER STREET, WENATCHEE, WA 98801, Court of probate proceedings and cause number: CHELAN COUNTY SUPERIOR COURT CAUSE NO.: 20-4-00173-04 Published in the Lake Chelan Mirror June 24, July 1 and 8, 2020. #295

**TORS** (RCW 11.40.030)  
 The Personal Representative named below has been appointed as Personal Representative of this estate. Any person having a claim against the decedent must, before the time the claim would be barred by any otherwise applicable statute of limitations, present the claim in the manner as provided in RCW 11.40.070 by serving on or mailing to the Personal Representative or the Personal Representative's attorney at the address stated below a copy of the claim and filing the original of the claim with the court. The claim must be presented within the later of: (1) thirty days after the Personal Representative served or mailed the notice to the creditor as provided under RCW 11.40.020; or (2) four months after the date of first publication of the notice. If the claim is not presented within this time frame, the claim is forever barred, except as otherwise provided in RCW 11.40.051 and 11.40.060. This bar is effective as to claims against both the decedent's probate and nonprobate assets. DATE OF FIRST PUBLICATION: June 10, 2020

**RUSSELL B. FODE**, Personal Representative  
 Address: 1889 Broadway Place Wenatchee, WA.98801  
 Date: June 1, 2020.  
 Attorneys for Personal Representative: GATENS GREEN WEIDENBACH, PLLC By.

**LINDSEY J. WEIDENBACH**, WSBA No. 43523  
 305 Aplets Way Cashmere, WA 98815  
**CHELAN COUNTY CLERK'S OFFICE**  
 Ms. Kim Morrison, Clerk  
 Chelan County Superior Court  
 350 Orondo Avenue, Suite 501  
 Wenatchee, WA 98801-2885  
 Published in The Cashmere Valley Record, Leavenworth Echo, and Lake Chelan Mirror on June 10,17, and 24, 2020. #222

**Public Notices**

**NOTICE OF APPLICATION VAR2020-02 Front Yard Setback Variance**

Proposal: The City of Chelan received an application for a reduced front setback from 20 ft. to 10 ft.. The project was on May 19th, 2020 and was deemed complete on June 19th, 2020. The variance is needed to allow for an attached garage associated with a single-family residence. Location: The project is located at 201 Bogey Blvd., Chelan, WA, 98816  
 Applicant: Delmar and Shelley Jones, 201 Bogey Blvd., Chelan, WA, 98816.

Environmental Review: This application is categorically exempt from SEPA review. Comment Period: Your written comments are encouraged. The public comment period on this application will remain open until 5:00 p.m. on July 6th, 2020. Any person has the right to comment on this application, receive notice of and participate in any hearings, and request a copy of any decision once made. Appeal procedures can vary according to the type of decision being appealed. Please contact the Chelan Department of Planning & Community Development with questions about appeals. The application and any related studies may be reviewed at City Hall, Department of Planning & Community Development, 135 E. Johnson Avenue, Chelan, WA, during regular business hours. No public hearing date for this proposal has been set. A public hearing notice will be sent in the future. Comments must be submitted to: City of Chelan Department of Planning & Community Development. Box 1669 Chelan, WA 98816. Published in the Lake Chelan Mirror June 24, 2020. #343



**Our Classifieds Can Help!**



Call now to place an ad  
 (509) 293-6780  
 (509) 682-2213 ext. 6531

**Public Notices**

**SUPERIOR COURT OF WASHINGTON IN AND FOR KING COUNTY**  
**No. 20-2-08189-2-SEA**  
**Summons by Publication SIGMA PHI EPSILON BUILDING CORPORATION, a Washington non-profit corporation.**

Plaintiff, v. **JAMES D. MUDGE**, an individual, including his heirs, successors and devisees; **CHRISTINA CATCHING**, formerly Christina Coit, an individual, including her marital community, heirs, successors and devisees; **T.E. CATCHING**, an individual, including his marital community, heirs, successors and devisees; **LORRAINE MILLER JACKSON**, an individual, including her marital community, heirs, successors and devisees; **ROMA CHRISTINA SCHNELLER**, an individual, including her marital community, heirs, successors and assigns; **SHARON HENRY**, an individual, including her marital community, heirs, successors and assigns; **WILLIAM COIT**, an individual, including his marital community, heirs, successors and devisees; **GWEN E. COIT**, an individual, including her marital community, heirs, successors and assigns; **PATRICIA SCHNELLER**, an individual, including her marital community, heirs, successors and assigns; **PETER SCHNELLER**, an individual, including his marital community, heirs, successors and assigns; **BARBARA SCHNELLER**, an individual, including her heirs, successors and assigns; **STAN SCHNELLER**, an individual, including his marital community, heirs, successors and assigns; **BRUCE SCHNELLER**, an individual, including his marital community, heirs, successors and assigns; **THIRTIETH STREET ENTERPRISES, LLC**, a Washington limited liability company; **DONALD CONNORS**, an individual, including his marital community, heirs, successors and assigns; **DONNA DELVA**, an individual, including her marital community, heirs, successors and assigns; **UNITED WAY OF WASHINGTON**; and **JOHN DOES 1-20**, as unknown heirs, devisees, successors and assigns of the above-named defendants, Defendants.

**THE STATE OF WASHINGTON, TO DEFENDANTS**, including their heirs and devisees: Bruce Schneller, Roma Christina Schneller, Stan Schneller, Peter Schneller  
 A lawsuit has been started against you in the above-entitled court by Plaintiff SIGMA PHI EPSILON BUILDING CORPORATION. Plaintiff's claims are stated in the Complaint, which has been filed with the clerk of the above-entitled court (the "Complaint").

You are hereby summoned to appear within sixty (60) days after the date of the first publication of this Summons, to wit, within sixty (60) days after June 17, 2020, and defend the above entitled-action in the above-entitled court, and answer the Complaint, and serve a copy of your answer upon the undersigned attorneys for Plaintiff at their office below stated; and in case of your failure so to do, judgment will be rendered against you according to the demand of the Complaint.

The object of the above-entitled action is to quiet title to real property located in King County, Washington. A description of the real property which forms the basis of this action can be found in the Complaint. DATED this 11th day of June, 2020.

**FOSTER GARVEY PC** s/Todd Reuter  
 Todd Reuter, WSBA #20859  
 618 W. Riverside Ave, Suite 300  
 Spokane, WA 99201  
 Telephone: (509) 241-1561  
 Facsimile: (844) 462-2906  
 Email: todd.reuter@foster.com  
 Attorneys for Plaintiff  
 Published in the Lake Chelan Mirror June 17, 24, July 1, 8, 15, and 22,

**Public Notices**

**DETERMINATION OF NONSIGNIFICANCE SP2019-04/SEPA2020-07 Crystal Crest Short Plat June 20th, 2020**

Description of proposal: The City of Chelan received an application on November 5th, 2019 to subdivide a 23.6 acres lot into 9 residential lots, and three open tracts. The current land is vacant, and applicant is proposing to grade and excavate existing land to accommodate access to residential lots. Applicant: Crystal View Estates JV. 135 N. Wenatchee Ave, Wenatchee, WA, 98801. Location of proposal: Unassigned Address. Chelan Parcel: 272203320100 Lead Agency: City of Chelan The lead agency for this proposal has determined that it does not have a probable significant adverse impact on the environment. An environmental

impact statement (EIS) is not required under RCW 43.21C.030(2)(c). This decision was made after review of a completed environmental checklist and other information on file with the lead agency. This information is available to the public on request.

There is no comment period for this DNS. This DNS is issued after using the optional DNS process in WAC 197-11-355. There is no further comment period on the DNS.

• This DNS is issued under WAC 197-11-340(2); the lead agency will not act on this proposal for 14 days from the date below. July, 6th, 2020

Condition(s):  
 -A storm water management plan in accordance with the Eastern Washington Storm water manual shall be submitted and approved by the City of Chelan prior to construction drawing approval.

-Shall comply with City of Chelan Development Standard's.

Responsible official: Crag Gildroy  
 Position/title: Planning director  
 Phone: (509) 682-8017  
 Address: 135 E. Johnson Avenue/PO Box 1669, Chelan, WA 98816  
 Date: June 20th, 2020  
 Published in the Lake Chelan Mirror June 24, 2020. #346

*Share Your News With Us*  
 Email it to [lcmeditor@gmail.com](mailto:lcmeditor@gmail.com)  
 or call 682-2213

[www.lakechelanmirror.com](http://www.lakechelanmirror.com)

Have spare room in your facility?  
 Advertise on

**STORAGE**  
 NCWMarketing.com

# What antihistamine is best for me



**Q:** Every summer, my nose runs, and my eyes itch from my allergies. Claritin® has worked for me in the past, but this year is different. I tried Allegra®, but it's not helping, either. What other antihistamine could I try?

Antihistamines work by keeping histamine locked away inside your body. Histamine is a compound that triggers inflammation. Histamine is stored in specialized cells in your body called mast cells. When you encounter something you're allergic to, these storage cells open up, releasing the stored histamine into your bloodstream. The freed histamine triggers the symptoms we associate with an allergic reaction: stuffy or runny nose, itchy eyes, and sinus pressure.

Antihistamines work by keeping histamine tucked away safely inside your mast cells. This is why antihistamines work best if you take them at least 1 hour BEFORE being exposed to whatever sets off your allergies.

Which antihistamine should you choose? That depends on which one works best for you and how much drowsiness it can cause.

There are 2 main categories of antihistamine medicines to choose from: sedating ones and non-sedating ones. The sedating antihistamines are older drugs that often cause drowsiness. They also can help dry up a runny nose and watery eyes. Newer antihistamines cause less drowsiness but are less helpful at drying up a runny nose.

Some antihistamines relieve allergy symptoms better with some people than with others. Many people have to try more than one before they find the one that works best for their allergy symptoms while causing the least drowsiness.

How important to you is avoiding drowsiness? Older antihistamines cause at least some drowsiness in most people. If this is a concern for you, start with the newer antihistamines because they cost little to no drowsiness.

One of the best antihistamines is loratadine, also known as Claritin® or Alavert®. It's taken only once a day and rarely causes drowsiness. If loratadine doesn't relieve your symptoms, you could try the non-sedating antihistamine Allegra® or fexofenadine, available in either twice a day or once a day versions.

If those don't work for you, try cetirizine (Zyrtec®) or Xyzal®. Cetirizine is transformed in your body to levocetirizine, which is Xyzal®, making them basically the same medicine. They are taken once daily, and they can cause drowsiness but only in about 10% of people.

If Claritin®, Allegra®, Zyrtec® or Zyal® aren't giving you enough relief, try one of the older sedating antihistamines. The most powerful is Benadryl®, also known as diphenhydramine. It helps with more severe

allergic symptoms but will cause drowsiness in most people. You can buy double-strength diphenhydramine as a sleeping pill without a prescription as Tylenol PM® or Sominex II. Benadryl® should be taken 3 to 4 times a day for best results. Some people take it just at night and use a less sedating antihistamine for allergy relief during the day.

There are several older antihistamines still available, including chlorpheniramine, brompheniramine, and triprolidine. Triprolidine causes less drowsiness than the other older antihistamines and seems to have more drying action as well. Surgeons used to take it to keep from having their nose drip while performing procedures. It's only available as Actifed®, which contains both triprolidine and the original version of Sudafed®. I prefer using it over the others because it relieves my runny nose, watery eyes, and my stuffy nose at the same time.

5 Tips on Choosing an Antihistamine:  
 1. Don't Wait. Antihistamines work best if they are taken BEFORE you come in contact with what you are allergic to. Don't wait until your nose stuffs up, and your eyes start itching.  
 2. Choose not to snooze. Select non-sedating antihistamines like loratadine (Claritin®) or fexofenadine (Allegra®), or minimally sedating ones like cetirizine (Zyrtec®) or Zyal®, especially if you have to drive or use machinery.  
 3. Don't give up. If your first antihistamine choice doesn't help you, try another one. It's not unusual to get very little relief from one antihistamine, then good results with a different one.  
 4. Consider a combo. For additional relief, add a nasal spray or decongestant to your antihistamine. Flonase® nasal spray or my own favorite, triprolidine/pseudoephedrine (Actifed®) tablets are excellent choices for runny and stuffy nose symptoms.  
 5. Avoid Sudafed PE® and generic phenylephrine.

If you have high blood pressure, avoid taking decongestants. If you need relief from nasal congestion, I strongly recommend the original versions of Sudafed® over the ones currently available in the cough and cold medicine section. Bring photo identification to purchase it from the pharmacy.

*Dr. Louise Achey, Doctor of Pharmacy, is a 40-year veteran of pharmacology and author of Why Dogs Can't Eat Chocolate: How Medicines Work and How YOU Can Take Them Safely. Check out her NEW website TheMedicationInsider.com for daily tips on how to take your medicine safely.*  
 © 2020 Louise Achey

**Public Notices**

**Lake Chelan and Manson School Districts Milk Bid**  
 Lake Chelan and Manson School Districts are hereby seeking bidders to provide the following items for the 2020-21 school year commencing August 27, 2020 and concluding on August 31, 2021.

Milk Products	Approximate Annual Total
1% White, ½ pint	75,000 cartons
Non-fat Chocolate, ½ pint	130,000 cartons
Fat free, ½ pint	2,500 cartons
1% white milk, gallon	1,500 gallons
Buttermilk, quart	660 quarts
Cottage Cheese, 4-5# tubs	17 tubs
Sour cream, 5# tubs	9 tubs
½ & ½, ½ gallon	8 cartons
Cream, ½ gallons	2 cartons
Orange juice, quart	12 quarts

Specifications to include delivery 2 times a week during the school year.  
 All bids shall be sealed and marked "Milk Bids" for opening no later than 2:00 p.m. August 6, 2020. Bid opening will occur at 3:00 on August 6, 2020. For questions, contact Eric Sivertson, Operations Manager, Manson School District, PO Box A, Manson, WA 98831 or by phone (509) 687-3140.  
 Published in the Lake Chelan Mirror June 24, 2020. #

**Public Notices**

Looking for a home for your Furry friend?  
 Try the pet section on [NCWMarket.com](http://NCWMarket.com)

**Public Notices**

**IN THE SUPERIOR COURT OF THE STATE OF WASHINGTON COUNTY OF CHELAN IN PROBATE**  
 In the Matter of the Estate of  
**ROY V. FODE**, Deceased.  
 NO. 20-4-00171-04  
**PROBATE NOTICE TO CREDI-**