

CHS football team lends their muscles to Lake Chelan Food Bank
See page 3

AUGUST 5, 2020 • VOLUME 128 No. 32 YOUR BEST SOURCE FOR LAKE CHELAN & ENTIAT VALLEY NEWS SINGLE COPY \$1.00

Lake Chelan Valley Events

Manson Farmers Market:

August 5, 8
MANSON - The Manson Farmers Market is open for their summer season and will hold markets each Wednesday and Saturday through September. Sales begin at 8:30 a.m. and continue until approximately noon. All required safety procedures will be followed- hand sanitized at entrance, social distancing and masks recommended for shoppers. All vendors will be wearing masks and using hand sanitizer.

Chelan Evening Farmers Market:

August 6

CHELAN - Chelan Thursday Evening Farmers market is open now thru the end of September, 4-7 p.m. There will be handwashing stations for customers and vendors. CEFM customers are asked to: Send only one person per household to the market, when possible. Leave pets at home. The market is located on the corner of S. Emerson and Wapato Streets, between the Riverwalk Inn and Riverwalk Park. For info: www.chelanfarmersmarket.org

Chelan Saturday Farmers Market:

August 8

CHELAN - The Chelan Saturday Farmers is now open for its 2020 season. It is located at 112 E. Johnson Avenue, and opens at 8 a.m. You will find locally grown organic food and crafts.

Lake Chelan Food Bank food distribution:

August 8, 11

Food distribution days now on Saturday, Tuesday
CHELAN - The Lake Chelan Food Bank food giveaway has changed to their Saturday and Tuesday distribution days, 9-10 a.m. Distribution will continue to be drive-thru. The Lake Chelan Food Bank is located at 417 S. Bradley Street.

Annual Back to School Fair:

Sunday, Aug. 9

CHELAN - It is almost time for the Annual Back to School Fair. While the event will be much different this year, the Back to School Fair committee (Real Life, Lake Chelan Hospital, CVCH, and both Chelan and Manson schools) still wants to help students with school supplies. They will be able to provide over 450 backpacks for elementary, middle and high school students. It will be Sunday, August 9 from 4 p.m.-6 p.m. for the drive-thru fair at Mountain Goat Field (near WalMart). The drive thru will consist of families coming thru in their ve-

SEE EVENTS ON PAGE 2

City of Chelan tackles park overcrowding

Editors Note: The city of Chelan City Council met on Tuesday, August 4, and may have made minor modifications to the specifics in this story, but regardless, there will be restrictions on the number of people that will be allowed into city of Chelan parks starting this weekend on August 8.

SUBMITTED BY PAUL HORNE, CITY OF CHELAN, DIRECTOR OF PARKS RECREATION & COMMUNITY SERVICES

CHELAN - Overcrowding at Chelan's beautiful Don Morse Park and Lakeside Park is nothing new. The parks have a long history of drawing visitors from across the state and beyond, and



Social Distancing Circles at Don Morse Park.

Photo courtesy Paul Horne/city of Chelan

parking backing up along State Highway 97A, and in surrounding residential neighborhoods, has been a perennial safety concern. This year these problems

have been exacerbated because of the novel coronavirus. First, more people are coming to Chelan choosing not to navigate air travel or cross border restrictions. Second, just as we face unprecedented sustained crowds, more social distancing is required to mitigate the spread of the virus.

Chelan's City Council took decisive action at their July 28, meeting. While a broad range of ideas were discussed, including closing the parks entirely on the weekends, a consensus was reached on the major components of a multifaceted plan. This plan addresses both park overcrowding on the weekends as well as the

SEE PARKS ON PAGE 3

WIAA announces 2020-21 sports seasons

BY MIKE MALTAIS
STAFF WRITER

RENTON - High school sports for the 2020-21 season will have a different look courtesy of a pandemic-modified calendar unveiled by the Washington Interscholastic Activities Association (WIAA) on July 21.

The new format features four WIAA-sanctioned seasons that will group the moderate- and high-risk fall sports of football, 1B/2B boys' soccer, girls' soccer, and volleyball into the spring 2021 season (3).

Here is how the modified schedule looks at of August 1. All dates are tentative:

- WIAA Season 1: Sept. 7 - Nov. 8 - cross country, softball, girls swim and dive, golf (alternate season), tennis (alternate season).

Cross country, softball, as well as alternative seasons for golf and tennis will begin practices the week of Sept. 7, a WIAA media release said adding that the viability of girls' swim and dive is dependent on more information from the Department of Health.

- WIAA Season 2: Dec. 28 - Feb. 28 - basketball, bowling, boys' swim and dive, gymnastics, cheerleading, wrestling.

Traditional winter sports will remain in Season 2

with the expectation for those to begin in late December or early January.

- WIAA Season 3: March 1 - May 2 - volleyball, girls' soccer, 1B/2B boys' soccer, football.

- WIAA Season 4: May 2 - June 27 - tennis, softball, track and field, baseball, golf, boys' soccer, dance/drill.

Traditional spring sports will complete Season 4 through the end of the school year.

The board recognizes that participation in any fall sports will depend on county progression through the phases laid out in Governor Inslee's Safe Start plan over the

coming weeks," said the WIAA release.

The WIAA board set benchmarks on July 28 to be met in order for Season 1 to take place. Should those benchmarks not be met, the board will plan to move the remainder of fall sports to Season 3.

"Since March, the philosophy of our Association has been to allow students every chance to participate," said WIAA Executive Director Mick Hoffman. "We've asked our Executive Board and planning committees to be as creative as possible in allowing for those opportunities. These are tough and unprecedented

decisions to make, but it has been inspiring to see so many people around the state come together to work on behalf of students."

The board and planning committees are working the Return-To-Activity Guidelines co-authored by the National Federation of High Schools, Washington Department of Health, and the Governor's office along with sport-specific guidelines proposed by committees comprised of coaches, athletic directors, officials, students and local health professionals. The guidelines can be viewed online at wiaa.com.

Lake Chelan Airport gets \$333,000 for runway work

BY GARY BÉGIN,
MANAGING EDITOR

CHELAN - The smallest airport for planes possible, a short, one runway operation that serves the city of Chelan and surrounding area, is getting \$333,000 through the Federal Aviation Administration Coronavirus Aid, Relief, and Economic Security (CARES) Act and the Airport Improvement Program as recently announced by U.S. Secretary of Transportation Elaine L. Chao.

Chelan's City Administrator Wade Farris said, "The \$333,000 grant was to fix a previous overlay on the runway that is leaching a discoloring substance on the runway markings. It will fund grinding the first few inches of the surface, repaving and then painting new markings. The COVID grant for \$30,000 was to fund normal airport operations," Farris concluded.

The Trump Administration will award nearly \$800 million in airport safety and infrastructure grants through the FAA to 46 states, Guam, the Northern Mariana Islands, Puerto Rico and the Marshall Islands.

"This nearly \$800 million Federal investment in airport infrastructure will strengthen safety, improve travel, generate jobs and provide many economic benefits for local communities," said Chao.

"These 383 grants will allow airport sponsors to either begin or complete construction projects that will maintain the safety and efficiency of our national airport system," said FAA Administrator Stephen M. Dickson.

Grants will be used for a variety of critical infrastructure and safety projects. Some of the projects include purchasing aircraft rescue and firefighting equipment, constructing runways and taxiways, repairing runways and taxiways, installing aircraft lighting and signage, conducting airport master plan studies, and installing airport perimeter fencing.

The Lake Chelan Airport is owned and administrated by the city of Chelan and the Chelan-Douglas Port District.



Lake Chelan Airport

Courtesy photo

Heritage Heights reports first case of Covid-19

CHELAN - Heritage Heights Assisted Living has its first case of COVID-19, reports Amanda Ballou, CEO of Heritage Heights.

Only one staff member has tested positive. No residents.

"We caught this case at the front door. All staff members are screened before starting work on each shift. This staff member behaved responsibly. She reported her elevated temperature, left work, tested that day, and quarantined," said Amanda Ballou, via email on July 31.

She continued, "We continually monitor residents and staff for signs and symptoms. We have seen none. However, we arranged for Lake Chelan Community Hospital to test all residents and staff, so that we could detect any asymptomatic cases. We will have results Monday (August 3)".

Ballou reported on August 3, that all tests came back negative.

All families were advised and they worked closely with Chelan Douglas County Health to address the risks to residents and staff.

SHOP LOCAL

During this difficult time support your neighbors

Most local businesses offer curbside service or delivery

INSIDE THIS WEEK

Community 1-4, 6	Classified Index	Inserts
Church News 4	Classifieds, Puzzles 5-6	Safeway
Obituaries/Death Notices 4	Public Notices 5-6	Manson Bay Market
Chelan Senior Menu 4		Kelly's Ace Hardware
Recreation/Health 6	Business & Services,	
	Health Care Directory 2	



310 E. Johnson Ave.,
P.O. Box 249
Chelan, WA 98816-0249
509-682-2213
www.lakechelanmirror.com

TEE TIME



Courtesy Lake Chelan Ladies Golf Club

Sizzling golf under hot blue skies.

SUBMITTED BY SHERRY FISK, LAKE CHELAN LADIES GOLF CLUB

CHELAN - Lake Chelan Ladies Golf Club Tee Time for July 30. The extreme heat really narrowed the field; only 14 women were in attendance for the weekly golf competition. There were fans and spray bottles and cool neck wraps galore. This week's competition

was Even and Odd (count even numbered holes on front nine and odd numbered holes on back nine less 1/2 your handicap).

This week's winners were: Division 1: First Place, Linda Hahn, 28.5. Second Place, Kari Burrows, 30.

Division 2: First Place, Judy Johanson, 28.

Division 3: First Place, Bernie Rayner, 31.

Nancy Parker made a chip-in birdie on hole #7 and Cindi Smith cashed in with two chip-

ins on holes 4 and 12.

Next week's competition (August 6) is Monthly Medal (Low gross and low net by division and fewest putts).

Our tee time is 8 a.m. Please check in by 7:30 a.m.

Next week is also round one of our Club Championship which will consist of three rounds held on August 6, 11 and 13.

Cluster of COVID-19 cases at Colonial Vista, Beneficial In Home Care

Two more deaths reported

CHELAN/MANSON/ENTIAI - On July 27, Chelan-Douglas Health District (CDHD) confirmed 17 cases of COVID-19 at Colonial Vista Long-Term Care Facility in Wenatchee. Thirteen residents and four staff members tested positive for Covid-19 after a facility-wide testing was conducted on July 22.

Chelan-Douglas Health District is also reporting its 12th and 13th COVID-19 associated deaths. The individuals were males, one in his 70s and the other in his 80s, living in Chelan County. These deaths bring the total COVID-19 deaths to 13.

On July 30 CDHD confirmed five cases of COVID-19 at Beneficial In-home Care in East Wenatchee. As required, all five employees who tested positive are iso-

lating at home.

As of Monday, August 3 there are 1,102 cases in Chelan County and 781 in Douglas County. Four from Chelan County and six from Douglas County are hospitalized in Chelan County Hospitals. There are 13 patients from surrounding counties in Chelan County hospitals.

Chelan-Douglas Health District reports the following numbers in the age groups, as of August 3. In the 20-29 427, up from 341 cases, 30-39 352 up from 288 cases, 40-49 331, up from 265 cases, 50-59 246 cases up from 195, 60-69 125 up from 97 cases.

The city of Chelan has 76 cases up from 65, Chelan Falls is holding at 19, Entiat is holding at 11, Manson has 49 up from 31, Mansfield four, Orondo 49 up from 28 and Bridgeport has 145.

Social Distancing and

wearing a mask is good, out of concern for preventing viral spread to others versus catching the virus from someone else.

Free face masks for visitors, locals, businesses and farm workers

CHELAN/MANSON - The Lake Chelan Chamber has free masks for the public. They can be picked up at the Lake Chelan Chamber of Commerce Visitor Center Monday-Friday 10 a.m.-4 p.m.

NCW - The Washington Farm Bureau is helping to distribute 500,000 washable cloth face masks to farm employees across the state to help protect against the spread of COVID 19. They have enough supplies to allocate several masks per employee. <https://wsfb.com/agriculture-mask-distribution/>

EVENTS

CONTINUED FROM PAGE 1

hicles and backpacks will be brought to them (while supplies last). Everyone is ask to wear a mask.

Red Cross Blood Drive: August 20

There are no times avail-

able for the August 19 Blood Drive at North Shore Bible Church in Manson. The next Blood Drives the valley will be Oct. 31 and Dec., 16.

BREWSTER - The American Red Cross will be holding a blood drive on August 20, 12 Noon to 5 p.m. The site will be changed the Brewster Adventist School gym at 115 Valley Road. Donors can call 800-733-2767 or 800 REDCROSS org go to red-

crossblood.org to make an appointment. All blood will be tested for antibodies of the COVID-19 type viruses. Please make sure you have recovered from the virus on the day of the donation. All social distancing, masks, and procedures will be followed.

Tender Loving Care now offering 'in-person' visits

CHELAN/MANMSON - TLC is now offering "in-person" visits to clients: After four months of noncontact/virtual visits (phone calls,

Lions Club installs new members

The Lake Chelan Lions Club installed three new members on July 16. Left to right, past president Chuck Robinson, new members sponsor Shannon Byquist-Freels, new member Hailey Allen, president Steve Shumway, and new members Patty and Mike Tipton. Anyone wishing to join the Lions Club can contact any Lions Club member or club secretary Mary Lou Shumway 360-280-5854.

Photo courtesy Lake Chelan Lions Club



Boats, trailers need to be removed from Chelan school parking lots

SUBMITTED BY LAKE CHELAN SCHOOL DISTRICT

CHELAN - The Lake Chelan School District is preparing for school this fall and are requesting that local residents and guests remove their boats and trailers from school parking lots.

Over the past few weeks, boat and trailer parking at the local high school has become problematic. Effective Sun-

day, August 2, no boats or trailers will be allowed to park in the main lot in front of Chelan High School. All boats and trailers must be cleared to be available for school district use.

Boats and trailers will be allowed to park at the side and back parking lots until August 16. Boats and trailers remaining on school parking lots after this date may be subject to towing.

City of Chelan Face Mask Contest winners



SUBMITTED BY CITY OF CHELAN

CHELAN - The City of Chelan has announced the



Photos courtesy City of Chelan FROM LEFT: First Place - Liz Fulton, Second Place - Mary Rios and Third Place - Tina Nycye. More photos at lakechelanmirror.com



Nycye.

winners of the final week of the face mask contest (floral theme).

First Place - Liz Fulton, Second Place - Mary Rios and Third Place - Tina

Thanks to everyone who participated. The City encourages everyone to continue to wear their masks.

GOOD NEWS BOATERS!
New pumpout stations available this summer. To find a pumpout station near you, visit PumpoutWashington.org.

Sea Grant Washington
STATE PARKS
RECREATION

BUSINESS/SERVICES • HEALTHCARE DIRECTORY

INSURANCE

You're healthy ... until you're not

- Got questions about Medicare?
- Health Insurance?
- Turning 65?
- Retiring soon?

Give Kelly Allen a call 509-888-9038

Kelly@KellyAllenAgency.com • www.KellyAllenAgency.com

PEST CONTROL

STEVE'S PEST CONTROL
Over 35 years of experience!

- Full Service Pest Control Available
- Free Inspections
- Crawl Space Repairs
- Senior Discount Available

509-439-0358
glenhelmick@gmail.com

Add your Business or Service to this Directory
Call Lindsay 509-860-7301 or Ruth - 682-2213

are able to help via phone or email. If you have questions or need assistance with: rent or utility assistance, eviction, food, non-food items, transportation, low-income housing resources, or homelessness, their team is ready to help. They are ready to serve you by phone Monday and Wednesdays, 9 a.m.-Noon and to 1-3 p.m. Call them at 509-888-2114. You can also them at info@chelanvalleyhope.org or visit them at www.chelanvalleyhope.org

Donations for the Lake Chelan Food Bank and Chelan Valley Hope can be dropped off at the Lake Chelan Mirror office, 310 E. Johnson Avenue in Chelan, 9 a.m.-5 p.m. Monday-Friday, outside in the provided tubs.

Chelan Valley Hope: baby wipes, diapers, toilet paper, travel size toiletries, shampoo, conditioners, dish and laundry soap.

Lake Chelan Food Bank: canned fruit, cereal, condiments, canned veggies, jam, chili, soup (other than tomato), boxed entrees and canned meats.

Submitting your Lake Chelan Valley Event

Email to your non-profit event to: ruthk@lakechelanmirror.com, subject line LCM Events. Deadline: Friday at 3 p.m. Be sure and include date, time, place and cost if any.

LAKE CHELAN MIRROR
© NCW Media Inc. 2020
310 E. Johnson Ave, P.O. Box 249
Chelan, WA 98816-0249
Phone: (509) 682-2213
Fax (509) 682-4209

Office Hours
Mon. to Fri. 9:00 a.m.-5:00 p.m.

On The Internet
Website: www.lakechelanmirror.com
News e-mail: lcmeditor@gmail.com
Advertising e-mail: ruthk@lakechelanmirror.com

Services
Back Issues are available up to one year after publication for a small fee.

Contact Information

Publisher
Bill Forhan • 548-5286
publisher@leavenworthecho.com

Managing Editor
Gary Bégin • gary@ncwmedia.net

Reporter/Photographer
lcmeditor@gmail.com

Reporter/Photographer
Michael Maltais
qchreporter@gmail.com

Advertising Sales Director
Carol Forhan • 548-5286
carol@leavenworthecho.com

Advertising Sales Chelan
RuthEdna Keys • 682-2213
ruthk@lakechelanmirror.com

Lindsay Timmermans
509-860-7301
adexec1@ncwmedia.net

Contact Information

Meg Laub
Classifieds/Legals
mirrorads@lakechelanmirror.com

Circulation: 509-293-6780
circulation@lakechelanmirror.com

Classifieds/Legals

Classified/Legals ads can be placed during normal office hours by calling 509-682-2213, email: mirrorads@lakechelanmirror.com

Weekly rates:
\$15.00 for the first 30 words
10 cents per word over 30 words

Borders, bold words, headlines, logos, photos subject to additional charges.

Place your ad online 24/7
www.ncwmarket.com

Deadlines

Letters to the Editor: Noon, Friday
Calendar Listings: Noon, Friday
News Submissions: Noon, Friday
Display Advertising: Noon, Friday
Legals: Noon, Friday
Classified Ads: Noon, Monday

Subscriptions

Chelan/Douglas Counties (yearly) print \$40
Chelan/Douglas Counties (yearly) print & web \$45
In State (yearly) \$50
Out of State (yearly) \$52

The Lake Chelan Mirror does not refund subscription payments except to the extent that it might fail to meet its obligation to publish each week, in which case the cost of the issues missed would be refunded as an extension. Subscriptions may be transferred to another individual or organization.

Letters policy

The Lake Chelan Mirror welcomes letters to the editor. All letters must be accompanied by the author's name, a home address and a daytime phone number (for verification purposes only). Letters may be edited for length, clarity, accuracy and fairness. No letter will be published without the author's name. Thank you letters will only be printed from non-profit organizations and events. We will not publish lists of businesses, or lists of individual names. Email your letters to: publisher@leavenworth.com

News Tips

Have an idea for a story? Call the Mirror at 682-2213

Corrections

The Lake Chelan Mirror regrets any errors. If you see an error, please call 682-2213. We will publish a correction in the next issue.

Lake Chelan Mirror (USPS 101-620) is published every Wednesday by NCW Media, Inc.
310 E. Johnson Ave., Chelan, WA
Telephone: (509) 682-2213.
Fax: (509) 682-4209
Periodical postage paid at Chelan, Wash. 98816
Postmaster: Send address corrections to: Lake Chelan Mirror, P.O. Box 249, Chelan, WA 98816-0249

Washington Newspaper Publishers Association Member

NCW Media Inc. prints on recycled newspaper with soy ink. Please Recycle

NCW MEDIA
Bringing the community to your door

PARKS

CONTINUED FROM PAGE 1

associated problems of parking along State Highway 97A and in neighborhoods surrounding the parks. The parking creates a hazard for pedestrians, cyclists and motorists.

The Council wanted to limit park capacity, on the weekends, while ensuring that local residents have access to the parks. To this end the City's two flagship parks will follow the example of Lake Chelan State Park which implemented a policy of closing their parks to visitors once their parking lots were full. However, Chelan will

allow local residents with a valid state-issued ID with a Chelan address to walk in, bicycle in, or be dropped off at the parks. Since the City lacks the staff to implement this policy it will outsource with a private security firm to control park access and patrol the parks. Parking fees will be raised to help offset the expense of the private firm. However, the parking rates will still offer a good value, as they are in alignment with local market rates, and cheaper than most parking in the Seattle area. The daily parking rate, for instance, will be raised from

\$15 to \$20. These rates will go into effect on August 27. Additionally, City staff is researching the purchase or rental of DOT style message boards to alert motorists well in advance of the park entrance. These would help reduce interactions at the entrances speeding efficiency and flow. They'll be useful for other City messaging as well.

In order to discourage parking along State Highway 97A and in residential neighborhoods adjacent to the parks, the City will raise

uted to parkgoers who want them. More rules signs will be developed and implemented in the park system. The Council has directed staff to study making the possession of alcohol in the parks a criminal rather than civil offense. This will give local law enforcement more tools to manage large crowds and create a more family-friendly atmosphere in the parks. One of the more fun policies has been adding a pilot project lining a small portion of Don Morse Park with circles illustrating ideal social distancing.

Park staff will continue to expand the area if people feel more comfortable and safer within the circles. Finally, the City will coordinate with WDOT to petition a speed limit reduction along Highway 97A.

The park capacity limits will begin on August 8 and continue on subsequent weekends until crowd sizes diminish with cooler weather, or until otherwise deemed necessary.

Chelan Mayor Bob Goedde states "Although we regret taking these actions, we find it necessary during this pandemic. The protection of our residents and visitors is our highest priority."



RuthEdna Keys/LCM

Visitors enjoy floating on Lake Chelan, between the two bridges on Sunday, August 2.

parking violation fines from the current \$25 to \$75. It will add additional no-parking signs along the 97A corridor and coordinate with Chelan County Sheriff and the State Highway Patrol to enforce parking violations. The City will continue to come off areas within the corporate limits and refine barricade placement on adjacent side streets to discourage parking in surrounding neighborhoods.

Several other policies will generally foster conditions of health and safety at the parks. The Lake Chelan Chamber of Commerce has offered free masks which will be distrib-

WVC hosts virtual open houses for new and potential students August 5-26

SUBMITTED BY WENATCHEE VALLEY COLLEGE

WENATCHEE - Wenatchee Valley College will host six virtual open house sessions for new students or those considering enrolling at the college. Each session will go over basic steps for getting started at WVC and will then feature a special presenter. Sessions are free and open to all.

A schedule of events is below. Each event takes place from 5-6 p.m. via Zoom videoconferencing:

August 5: Featuring special presentation on workforce grants and worker

re-training opportunities.

August 12: Featuring special presentation on Running Start and College in the High School.

August 13: Featuring special presentation on our professional technical programs including, allied health, early childhood education, automotive and machining technology.

August 19: Featuring special presentation on our student support programs TRIO, CAMP and MESA.

August 26: General information presentation.

Those interested in attending should use the link for the date they would like

to attend, found at <https://www.wvc.edu/students/student-programs/online-open-house.html>. Attendees should note that each session has a unique meeting ID.

Wenatchee Valley College enriches North Central Washington by serving educational and cultural needs of communities and residents throughout the service area. The college provides high-quality transfer, liberal arts, professional/technical, basic skills and continuing education for students of diverse ethnic and economic backgrounds. Visit our website, wvc.edu.

CHS football team lends their muscles to Lake Chelan Food Bank



Photo courtesy Coach Travis Domser, Chelan High School football coach

Members of the Chelan High School football team can't practice due to COVID-19, so they are putting their muscles to work by serving their community by helping out the Lake Chelan Food Bank unload the weekly delivery of food boxes to the local food bank. Above left AJ Martinez (red face mask) and Gunner Gleasman (purple shirt) help unload the truck last Friday, July 31. Chelan High School football team members will be helping out each week. National Guard members had been helping out area food banks since early April. Food distribution is every Saturday and Tuesday, 9-10, drive-thru style, at the the Food Bank located at 417 S. Bradley in Chelan. Below: Chelan High School football players who helped out last week: Left to right: Quin McClaren, Gunner Gleasman and AJ Martinez,



Responding to crisis: Community Foundation adapts programming

BY DENISE SOROM, DIRECTOR OF COMMUNITY PHILANTHROPY, COMMUNITY FOUNDATION OF NCW

By April it became quite clear to the leadership at the Community Foundation of North Central Washington (CFNCW) that for the foreseeable future, it would not be business as usual, but rather "business unusual."

As the region's largest manager of charitable assets—offering grant funding and training opportunities for nonprofits, scholarships for students, and forging connections between donors and charitable causes—CFNCW knew it had an important role to play in helping this region survive the impact of the COVID-19 crisis. It had already decided to adapt its Helping Hands grants to provide emergency relief funding for groups impacted by COVID, but more had to be done. Just as CFNCW had stepped up during the wildfires of 2014 and 2015, creating special emergency funds and stewarding the generous donations from people far and wide to help rebuild and recover, this crisis required a response as well, but what?

The pandemic had impacted just about every facet of daily life and CFNCW's response needed to be equally comprehensive. Food banks and housing support organizations were seeing giant spikes in demand while programs at arts and education based nonprofits were coming to a grinding halt. A response needed to both bolster nonprofits providing basic human services while doing as much as possible to make sure that the rest of the sector would not fade into oblivion.

After much delibera-



Denise Sorom, Director of Community Philanthropy, Community Foundation of NCW

tion and conversations with community leaders throughout the region, CFNCW announced a new suite of programming to respond to the crisis:

Helping Hands 2.0 –

Funding Critical Needs Impacted by Covid

CFNCW has updated its original emergency grant program to focus squarely on nonprofit agencies who are providing critical, safety-net services to vulnerable populations impacted by Covid. Applicants can request as much as is needed, and approved requests are disbursed monthly.

Nonprofit Reemergence Grants – Funding for Nonprofits as they Reemerge in the Covid Environment

In lieu of the Regional Impact Grant, this is a temporary grant program to address recovery for nonprofits. Rather than being program-specific, these grants provide general operating support. Nonprofits can request up to 10% of their current op-

budget with a max request of \$20,000. Grants will be awarded quarterly through July 2021.

NPI Virtual Learning – Nonprofit Reemergence Learning Series

This is a free learning series to help nonprofits plan and strategize for reemergence in their community. The series will cover several topics (leadership, financial strategy, fundraising, collaboration) via Zoom with guest presenters once a month from July – October.

Back to Basics – Schools helping Families in Need

CFNCW has heard heart-breaking stories from schools about families struggling with basic needs, making it next to impossible for students to focus on learning. The

Back to Basics campaign will be a crowdsourcing campaign to raise funds for school districts throughout our region to help families purchase formula, diapers, clothing, food, and other basic needs. This campaign will run during the month of September.

As of July, almost \$400,000 has been donated to CFNCW's Helping Hands Fund for COVID Relief by hundreds of local donors, businesses and foundations. The "All in Washington" campaign matched \$65,500 of those gifts, bringing the total to over \$465,000! Several donors gifted the entirety of their federal stimulus checks, recognizing that many in this community needed those funds more than they did.

Beth Stipe, CFNCW's Executive Director, states: "Our donors have blown us away with their generosity and their desire to help. We hope that this new grant-making approach for 2020-2021 will honor those donations and put this region on a road to recovery. We are always astounded by the generosity, resilience, and commitment that this community exhibits to find positive solutions to difficult problems. This might be one of our greatest challenges yet, but we think the people of North Central Washington are up for it!"

For more information about any of the programs above, or the work of the Community Foundation, visit www.cfncw.org.

WESTERB984CE

WESTERN RANCH BUILDINGS
STEEL & POST FRAME BUILDING CONTRACTORS

ESTABLISHED SINCE 1976

NEFA

Your building can be customized just the way you want!

Sold and erected by an independent, locally owned builder

(509) 884-0555 4968 Contractors Drive
www.westernbuildings.com East Wenatchee, WA 98802

RESIDENTIAL • COMMERCIAL • INDUSTRIAL • AGRICULTURAL

GIVE10

What is your legacy?

Provide for your family and future generations. Leave a gift to your community, forever.

www.cfncw.org • (509) 663-7716

Community Foundation of North Central Washington

OBITUARIES

Jessie Marie (McMonagle) O'Neal

Beloved resident of Chelan, Washington, Jessie Marie (McMonagle) O'Neal passed away peacefully at her home on July 6, 2020, eleven days after her 94th birthday.

She was born Jun 25, 1926, the first daughter of Charles and Sigrid (Brun) McMonagle, in the home of her maternal Norwegian grandparents in Mica, Washington.

The McMonagle's moved to Chelan around 1933 and opened Mac Chevrolet Dealership.

Jessie was voted "Princess Chelan" before graduating from Chelan High School in 1944, a year in which the Apple Blossom Festival was cancelled due to World War II. That fall, on September 3, 1944, Jessie married her high school sweetheart, Raymond Clerc



"Toad" O'Neal and they enjoyed a brief honeymoon at nearby Patterson Lake. Jessie said "it seemed like the whole town of Chelan was there fishing that Labor Day weekend!" Jessie worked at the Seattle First Bank following high school in Chelan and briefly near Bremerton while Toad was stationed prior to his departure to the South Pacific on the battleship U.S.S. Indiana. Jessie and Toad spent three happy



months living in a "rat trappy" Bremerton hotel room, two blocks from the shipyard. One day Jessie looked out the window and saw Toad's battleship had shipped out. Jessie returned to Chelan and supported the war effort with her parents. Following Toad's honorable discharge in November 1945, Toad and Jessie and their

baby daughter, Linda, began earning their living in Chelan on 15 acres of apples above Spader Bay. Second daughter, Terrie, was born two years later.

Jessie enjoyed gardening, interior design, skiing, fishing, cooking, music, cross stitch and sewing. She had an eye for beauty and a penchant for creating classy and comfortable environments that made her home and patio a favorite gathering spot for family and friends. Her optimistic outlook and graceful presence turned attention to the best in people and situations, cultivating beauty wherever she looked. Jessie was a member of the Lake Chelan Methodist Church and the Lake Chelan Hospital Guild Z and remained lifelong friends

with many members. Jessie loved animals, dogs in particular. An abiding love for her husband Toad supported a marriage of nearly 67 years.

Survivors include daughters Linda Evans Parlette (Wenatchee) and Terrie O'Neal (Snohomish), grandsons Guy (Anni) Evans (Chelan) and Luke Evans (Wenatchee), great-granddaughter Jessie Marie Evans (Wenatchee), and step-great granddaughters Seleah and Gianna Hisey. She was preceded in death by her parents, her husband Raymond "Toad" O'Neal in 2011, and her sister, Naomi Van Klinken in 1986.

Jessie's family would like to express their gratitude to Dr. Tony Long, nurse Barbara, Hospice,

and the loving [care] from her care givers in her home.

Those who wish may make memorial donations in Jessie's name to: the Chelan Valley Hope (Tender Loving Care) (P.O. Box 635, Chelan, WA 98816); the Wenatchee Valley Humane Society (P.O. Box 55 Wenatchee, WA 98807); and the Alzheimer's Association (225 N. Michigan Ave., Fl. 17, Chicago, IL 60601) or the Lake Chelan Methodist Women (Box 1236, Chelan, WA 98816)

Please feel free to leave any thoughts and memories for the family at www.prechtrose.com. Services are entrusted to Precht Rose Chapel of Chelan.

Due to the uncertainty of COVID-19, Jessie's Celebration of Life will be held at a later date.

Anna Domanska

Anna Domanska, 69, of Entiat, Washington, passed away peacefully at home with her family by her side on July 16, 2020, after an extended illness.

Anna was such a beautiful woman, both inside and out. The hearts she touched seemed countless. From the students she taught, men and woman in the program, good friends and family, her beloved pets and probably most of all, her son and daughter-in-law, Thomas Prais and Fini Gilsoul. Her laughter was like no other, noticeable even in a crowd of hundreds and it was oh so contagious. She is missed more than words can say.

Unfortunately, there is no



Celebration of Life scheduled for obvious reason, but it will take place at a later date when it is safe to do so.

She is survived by her husband, Max Blankenship, and her son and daughter-in-law, Thomas Prais and Fini Gilsoul of Chelan, Washington.

In lieu of flowers, any tributes in Anna's memory can be made to the Humane Society and the Fred Hutchinson Cancer Research Center.

Irene L McCallum

Irene L McCallum, 90, of Manson, Washington passed away on Friday, July 31, 2020 while peacefully asleep. Irene, born in South Dakota, had been a resident of Manson since 1952, and is survived by her son Wes Morris of Wilsonville, Oregon and Marty Morris of Manson. She is further survived by three grandchildren, Andrea, Jeffrey and Elizabeth Morris as well as her sister Elma Burns.

Irene was an orchardist in Manson, in addition to other work in the apple industry and for Safeway. Irene was feisty, spirited and never met a stranger. She enjoyed painting and traveling. A reception will be held at the McCallum residence, on Saturday,



August 8, between 1 and 4 p.m.

Please leave any thoughts and memories for the family at www.prechtrose.com. Services are Entrusted to Precht Rose Chapel of Chelan.

DEATH NOTICES

April J. Monday

April J. Monday, 72, of Chelan, Washington, passed away on August 1, 2020.

See her full obituary at www.prechtrose.com. Please feel free to leave any thoughts and memories for the family at www.prechtrose.com. Services are entrusted to Precht Rose Chapel of Chelan.

Ernest George Robison

Ernest George Robison, 84, of Chelan, Washington, passed away on July 29, 2020.

Please feel free to leave any thoughts and memories for the family at www.prechtrose.com. Services are entrusted to Precht Rose Chapel of Chelan.

Obituaries & Death Notices also appear online lakechelanmirror.com

OBITUARY & MEMORIAL POLICIES
NCW MEDIA, INC.
 An obituary is a way for family member(s) to commemorate a loved one's life and to notify the larger community of the deceased. Obituaries are also used for historical and ancestral data.
Memorials are another way of letting the community know about the life and memories of the person who has died. A Memorial is different from an obituary. An obituary is usually current while a memorial can be written later.
 Obituaries and memorials need to be typed and emailed no later than Friday by 4:00 p.m. to be placed in the next available issue(s). Please call for cost of an obituary and which NCW paper(s) that it will be placed in to.
 Cost of the obituary/ memorial is due at the time of placement. Funeral homes and chapels can submit obituaries by Noon on Monday, unless a holiday.
Obituaries are priced per word while Memorial ads are per column-inch.
 For info call Ruth 509-682-2213, or email ruthk@lakechelanmirror.com

SENIOR MEALS MENU

Chelan Senior Center
 CHELAN - *The Chelan Senior Center is closed, however meals are being given out on a takeout bases.*
Senior Meals
 Call (509) 888-4440 by 9 a.m. Monday thru Thurs-

day to order your meal. Meals can be picked up between 10:30 and 11:30 a.m. at the Senior Center located at 534 E. Trow Avenue.
Thursday, August 6
 BBQ Chicken, Macaroni Salad, Green Beans, Mixed Greens Salad, WW Roll, Berry Cobbler

Friday, August 7
 Tortellini Bacon Salad, Mixed Berries. WW Roll, Dessert
Monday, August 10
 Chicken Caesar Salad, Tomato Wedges, Watermelon, Cheesy Garlic Toast, Dessert

Tuesday, August 11
 Pot Roast, Roasted Red Potatoes & Carrots, Garden Salad, Mixed Fruit, WW Roll, Oatmeal Cookies
Wednesday, August 12
 BBQ Riblets, Baked Beans, Crunchy Pea Salad, Cole-slaw, Cornbread, Strawberry Shortcake

*Share Your **News** With Us*
 Email it to lcmeditor@gmail.com or call 682-2213

Due to the COVID19 Virus, churches have suspended Saturday and Sunday Services, Sunday School and meetings.
Please call or email your church listed below if you need more information. May you take time to pray, rest, meditate and reflect during this time. Stay well, stay strong and stay informed.

CHURCH GUIDE

New to the area? On Vacation? These churches welcome you!

• CHELAN

CHELAN CHRISTIAN CHURCH
 Morning Worship 10 am
 682-2025 • 210 E. Wapato Ave.
 Pastor Mark Wilton

CHURCH OF THE NAZARENE
 Sunday School 10 am
 Worship 11 am & 6 pm
 Youth Group - Friday 7 pm for 13-18 years of age
 682-5135 • Sanders St. & Okanogan Ave.

LAKE CHELAN LUTHERAN CHURCH
 Please join us for Sunday Worship via Conference Call at 9:30 a.m. Dial 339-209-6617. Follow prompts.
 682-9063 • 216 W. Nixon Ave.

LAKE CHELAN UNITED METHODIST CHURCH
 Worship 10 am
 682-2241
 Corner of Johnson & Emerson

• CHELAN

LIVING STONE CHURCH
 "Gathering in our uniqueness, United in our Purpose."
 Mark Jackson, Pastor
SUNDAY ACTIVITIES
 Gathering - 10 am
 WE GATHER at 216 N Emerson (2nd story of the Chelan Public Library)
OUR OFFICE LOCATION
 105 N. Emerson - Suite 204, Chelan • 509-682-5953
 For more information about us, our activities and our current schedule call or visit us at www.LSCCHELAN.ORG or <https://www.facebook.com/LSCChelan>

St. Andrew's EPISCOPAL CHURCH
 Worship 10 am
 120 E. Woodin Ave., PO Box 1226, Chelan, WA 98816
 682-2851 • www.standrews-chelan.org

St. Francis De Sales CATHOLIC CHURCH
 English Mass Saturday 5 pm • Spanish Mass Saturday 7 pm
 English Mass Sunday 9 am
 Spanish Mass Sunday Noon
 Rev. Rogelio Gutiérrez, Pastor
 682-2433 • Next to Safeway

• ENTIAT

ENTIAT FRIENDS CHURCH
 Pastor Mark McDonald
 509.784.1342
 email: entiatfriends@nwi.net
 2848 Entiat River Road
 Sunday morning Bible Classes 9:45 am
 Sunday morning Worship 11 am
 Sunday morning Worship (summer months) 10 am
 Wednesday Shared Dinner 6 pm
 Wednesday Programs Adults/Youth/Children 7 pm

• MANSON

MANSON UNITED METHODIST COMMUNITY CHURCH
 Sunday Worship 10 am
 With coffee following service
 687-3311
 Green & Boetzkes
 "We are a come as you are church"

NORTH SHORE BIBLE CHURCH
 Sunday Worship 9:30 am
 Nursery (birth - 3 years) 9:30 am
 Kidz Church (4 years-5th Grade) 9:30 am
 687-3636 • 123 Wapato Point Parkway
www.northshorebc.org
 Craig Rayment, Sr. Pastor

"With men this is impossible; but with God all things are possible."
 -Matthew 19:26

TO PLACE YOUR CHURCH IN THIS GUIDE:
 RUTH 682-2213 • ruthk@lakechelanmirror.com



Place your ad online at NCWMARKET.COM or call 509-548-5286 - Leavenworth Echo/Cashmere Valley Record
509-682-2213 - Lake Chelan Mirror • 509-689-2507 - Quad City Herald

CLASSIFIEDS

Administrative

Publisher's notice

PUBLISHER'S NOTICE
All real estate advertising in this newspaper is subject to the Fair Housing Act, which makes it illegal to advertise "any preference, limitation or discrimination based on race, color, religion, sex, handicap, familial status or national origin, or an intention to make any such preference, limitation or discrimination." This newspaper will not knowingly accept any advertising for real estate that is in violation of the law. To complain of discrimination call HUD at 1-800-669-9777. The number for hearing impaired is 1-800-927-9275.

CORRECTIONS: NCW Media Inc. shall be responsible for corrections to advertisements on the first publication only. The advertiser will be responsible for corrections made thereafter. NCW Media Inc. shall not be responsible for slight changes or typographical errors that do not lessen the value of the advertisement. NCW Media Inc.'s liability for other errors or omissions in connection with an advertisement is strictly limited to the publication of the advertisement in any subsequent issue. No monetary refunds will be given. For more information call (509) 548-5286.



Puzzle Solution

O	V	A	L	S	P	I	L	L
R	O	L	E	C	A	L	L	S
A	T	O	P	U	L	N	A	E
L	E	T	T	E	R	M	A	N
O	N	A	I	R	S	U	V	
K	R	O	N	E	R	D	O	P
H	E	N	M	E	Z	C	A	L
A	S	S	A	O	B	I	S	E
K	I	E	V	P	O	S	S	S
I	N	T	E	R	I	M	N	A
R	U	G	S	E	E	R	S	
L	O	A	M	A	M	A	T	E
C	A	R	G	O	L	A	B	S
A	M	E	E	R	S	T	A	I
M	A	O						



8	7	3	5	4	1	6	9	2
9	2	1	6	3	7	8	4	5
6	4	5	8	2	9	1	7	3
3	9	7	1	8	2	5	6	4
1	6	2	7	5	4	9	3	8
4	5	8	9	6	3	2	1	7
5	8	4	3	9	6	7	2	1
2	1	9	4	7	5	3	8	6
7	3	6	2	1	8	4	5	9

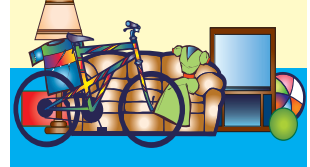
Announcements

Lost & Found

LOST AND FOUND can be placed in our local newspaper and online for **ONE week for FREE.** Limit 30 words
Leavenworth/Cashmere 509-548-5286
or
Lake Chelan Mirror 509-682-2213
or
Quad City Herald 509-689-2507
Deadline is Noon on Friday

Sell your unused items with a Classified ad

- Place your ad 24/7 at ncwmarket.com
- Email: mirrorads@lakechelanmirror.com
- Call 682-2213



Happy Ads

HAVE A SPECIAL EVENT COMING UP? PLACE IT IN OUR CLASSIFIEDS IN THE PAPER AND ONLINE

24/7 at www.NCWMarket.com

HAPPY BIRTHDAY CONGRATULATIONS!

WILL YOU MARRY ME?

HAPPY ANNIVERSARY Only \$15 for 30 days includes 3 photos

Chelan-Brewster 682-2213 or Leavenworth-Cashmere 548-5286

Employment

Help Wanted

CASCADE SCHOOL DISTRICT
The Cascade School District is seeking qualified applicants for the following positions:

- Substitute: Custodians
- Teachers
- Para Educators
- Food Service Cashiers
- Bus Drivers

Fast Track application process and information can be found on our website at: www.cascadeed.org EOE

Full and Part-time Bedmaker, Laundry and Housekeeping

The Enzian Inn is hiring for full and part-time Housekeeping Laundry, Bedmakers. Enjoy a competitive wage and positive working environment. Shifts typically begin at 9 a.m. and end between 2- 4 p.m. daily. Hotel amenities such as fitness room, indoor pool and jacuzzi are available to employees and their immediate family to enjoy in the winter months. Apply in person Enzian Inn 590 US Hwy. 2 Leavenworth

lakechelanmirror.com and on Facebook

Help Wanted



The Cascade School District is seeking qualified applicants for the following positions:

Cascade High School Food Service Cashier
Peshastin-Dryden Food Service Cashier

Fast Track application process and information can be found on our website at: www.cascadeed.org EOE



The Cascade School District is seeking qualified applicants for the following position:

Alpine Lakes and Peshastin-Dryden Elementary School Counselor

Fast Track application process and information can be found on our website at: www.cascadeed.org EOE

Help Wanted

PATEROS SCHOOL DISTRICT 122-70J SCHOOL BOARD VACANCY AT-LARGE DIRECTOR POSITION

The board of directors of the Pateros School District is seeking applicants to fill an at-large board director position. Applicants must reside in the boundaries of the Pateros School District, be a United States citizen and a qualified voter. Please contact the district office for exact boundaries.

Application and additional information can be obtained online at www.pateros.org; from the district office: 509-923-92751 x 4; or by email: lehlenbach@pateros.org. The deadline for applications is noon on August 19, 2020, position open until filled.

Work Wanted

Full and Part-Time Breakfast Catering Staff

The Enzian Inn is searching for energetic service oriented individuals to join our breakfast/ catering team. Position provides opportunities to learn and perform a variety of duties. Prepare, present and serve the daily breakfast buffet and at catered functions. Full and part time positions requiring some weekends. Recreational amenities of hotel are available to employees including fitness center, indoor/ outdoor pool, spa and putting course. Apply in person. 590 Hwy. 2 Leavenworth

Print only? Deadline is Monday by Noon for all papers:
Lake Chelan Mirror Quad City Herald 683-2213
Leavenworth Echo Cashmere Record 548-5286
Your ad will appear online and in the newspapers for one low price!

For Sale

Antiques & Collectibles

Get cold hard cash for your Antiques and Collectibles by placing them in our classifieds.

Place your ad with pictures online 24/7 at NCWMarket.com Just register and pay online and you are done. Your ad will appear online and in the newspaper for one low price.

Deadline Monday at Noon for all papers:

Lake Chelan Mirror Quad City Herald 682-2213
or call **Leavenworth Echo Cashmere Record 548-5286**

Furniture

NCW Media Newspapers

We have excess office furniture available. Items left are 2 large wood desks with side desk attachment, One metal desk, one large wood conference table, a large counter approx. 7' x 3 1/2' tall with removable shelves, A wood credenza and a free 4' x 4' white board All other items are \$25.00 per item. Call to arrange a time to examine or pick up. All items located in Cashmere. We also have a small safe that is FREE to a good home. It has not been opened for many years because we do not know the combination. It could include valuable material we don't know. For information call Leavenworth Echo, 548-5286 or Bill, at 509-670-1837. Also see photos on NCWMarket.com

SUDOKU PUZZLE

FREE! Savings include an American Standard® Walk-In Tub. Price: \$2000 (MSRP)

WALK-IN BATHTUB SALE! SAVE \$1,500

- ✓ Backed by American Standard's 140 years of experience
- ✓ Ultra low entry for easy entering & exiting
- ✓ Patented Quick Drain™ Technology
- ✓ Lifetime Warranty on the bath AND installation, INCLUDING labor backed by American Standard
- ✓ 44 Hydrotherapy jets for an invigorating massage

Limited Time Offer. Call Today!
866-612-7490
Or visit: www.walkintubinfo.com/spm

	7	3		4			6	
					7			5
	4			2				7
			1			5	6	
		2					9	
	5	8			3			
	8			9				2
2			4					
		6		1		4	5	

© StatePoint Media
Fill in the blank squares in the grid, making sure that every row, column and 3-by-3 box includes all digits 1 through 9.

See MORE CLASSIFIEDS & PUBLIC NOTICES on Page 6

CROSSWORD PUZZLE

THEME: BACK TO SCHOOL

ACROSS
1. *Egg-like curve in math class
5. a.k.a. stand-up paddleboard
8. Not in good health
11. Flick part
12. *Roll
13. Aerosol can emanation
15. On the mountain peak, e.g.
16. Arm bone
17. Grind down
18. *Proud jacket owner
20. Trident part
21. "Walking _____"
22. Blazer or Explorer
23. Unit of money in Norway, pl.
26. Semiconductor additives
30. Farm layer
31. Agave alcoholic drink
34. Amos or Spelling
35. Analyze
37. Geisha's sash
38. South Korean metropolis
39. Capital of Ukraine
40. T.S. Eliot's "Old _____'s Book of Practical Cats"
42. Get firm
43. Temporary
45. Table linens
47. Where bugs are snug?
48. Nostradamus and such
50. Type of rich soil
52. *Where one graduated
56. Boatload
57. *Chemistry classrooms
58. Lake in Scotland
59. Arabian chieftain
60. Corset rod
61. Encore!
62. Former Chinese leader
63. "_____ the ramparts..."
64. Arctic jaeger

DOWN
1. *Type of spoken test
2. *Class president candidate wants it
3. Loads, two words
4. Greek money
5. Game ragout
6. Of #16 Across
7. Architect's drawing
8. Used to eliminate wrinkles
9. Serve soup, e.g.
10. Sodium solution
12. Arrow poison
13. Establish, two words
14. *As opposed to public
19. Hostile force
22. "La" precursor
23. Shade of Dockers
24. Pine juice
25. Beginning of illness
26. *Valedictorian's spot
27. Gallows' rope
28. Comparative form of "true"
29. Muddy or sandy
32. *2020 classroom venue?
33. NCIS network
36. *GPA, technically
38. Ingratating behavior
40. George Orwell's Napoleon
41. On pins and needles
44. Grapevine news
46. Part of Old Testament
48. *Olden day notebook
49. Imprison
50. Dharma teacher
51. Three-layer cookie
52. "The Sun _____ Rises"
53. Pippin's last name, "The Hobbit"
54. Boring hue?
55. Actress Perlman
56. Eric Stonestreet on "Modern Family"

GET THE GRILLER'S BUNDLE INTRODUCTORY PRICE: \$79.99
4 (5 oz.) Butcher's Cut Filet Mignon
4 (4 oz.) Boneless Pork Chops
4 (4 oz.) Omaha Steaks Burgers
4 (3 oz.) Gourmet Jumbo Franks
4 (2.8 oz.) Potatoes au Gratin
4 (4 oz.) Caramel Apple Tartlets
Omaha Steaks Seasoning Packet

+ 4 MORE BURGERS FREE
THAT'S 20 COURSES + SIDES + DESSERT.
ORDER NOW! 1.833.406.1259 ask for 63281KJ
www.OmahaSteaks.com/family588

© StatePoint Media

RB's Custom Tractor Works

Disking - Tilling
Mowing
Hourly Tractor Work

Free estimates
33 years experience
Cell 509-679-2469
Bus license #602-781-946

Upgrading your 'ride'?

we can help you sell your old one

- Place your ad 24/7 at ncwmarket.com
- Email: mirrorads@lakechelanmirror.com
- Call 682-2213

Place your Help Wanted and find the best qualified local employee

Place your ad 24/7 at ncwmarket.com
Email: mirrorads@lakechelanmirror.com
Call 682-2213

Garage & Yard Sale



CLEAR SOME SPACE WITH A
Fill your pockets with **CASH \$\$ AD**
Let others know what items you are selling!

Go online now to Place your ad 24/7 at www.NCWMarket.com

Print only?
Deadline Monday at Noon for all papers

Lake Chelan Mirror
Quad City Herald
Call 682-2213

Leavenworth
Cashmere
Call 548-5286

Your ad will appear online and in the newspapers for one low price.

Real Estate

Orchards & Farms



We have buyers for your Pear, Apple and Cherry Orchards!
509-669-4500
information@nwi.net

Rentals

1 bedroom furnished apartment in Manson. WIFI, TV, all utilities, private pool, private parking. No pets. \$800/ month. Available August 2. 509-679-4900.

Leavenworth Home for Rent
3 Bedroom, 2 Bath, great area with mountain view. \$2000 per month. Call Mike, 509-699-3063

Affordable Housing!

Immediate Availability
Rent based on income. Immediate openings for 1 and 2 bedroom apartments HUD vouchers welcome
Rent based on income. Must meet eligibility criteria. Background screening required: \$40.00/ adult
Call 509-683-1225 or 509-423-3539
E-mail: mansfieldmanorapartments@gmail.com
"This institution is an Equal Opportunity Provider and Employer."

Wanted to Rent

Retired Naval Officer seeks to lease Lake Wenatchee boat dock access during potential 2020 Sockeye fishery. Will share catch. Call Dan at (619)993-1681.

Retired man is looking for a small apartment or very small house, in the Leavenworth or nearby area. I have references. Call 509-663-0754.

WHAT'S HAPPENING
EVENTS
Need to promote your event? Have you thought about **NCWMarket.com** the best online promotion available

Legals

Public Notices

NOTICE OF PUBLIC HEARING
SSDP2020-02/VAR2020-02
Shoreline Retaining Wall Maintenance Exemption, Shoreline Buffer Variance, and Side Yard Setback Reduction Land-Use Variance
July 31st, 2020
The City of Chelan received an application on March 16th, 2020 to repair and maintain an existing concrete seawall via replacement, as well as construct a new retaining wall and improve existing concrete stairs and patio associated with a single-family residential structure. The new retaining wall and new steps will take place partially within the 25 ft. buffer and qualifies for the proposed shoreline variance. The proposed project would provide much needed repair to an already 50+ year old existing seawall. In addition, the applicant is also asking for a reduced side yard setback down to 0 ft. to allow work to be done on an existing stairway which is nonconforming to the current side yard setback of 5 ft.
Project Applicant: Eloise Harle, PO BOX 144, Bellevue, WA, 98009
Project Location: 2120 W. Terrace Ave, Chelan, WA, 98816
Parcel: 272215662252
NOTICE IS HEREBY GIVEN that a public hearing will be held before the Hearing Examiner at 10:00 a.m. on August 25th, 2020 in the Council Chambers at 135 East Johnson, Chelan, WA via zoom. The public will have an opportunity to listen in through the zoom meeting (invitation below). This will be audio only, and you will be unable to comment via testimony through the zoom invitation. A separate line will be used for public testimony. To provide testimony you will call the City of Chelan main line (509)-682-8017, then type Ext. 320 only during the public testimony portion of the hearing.
Topic: Harle Shoreline Hearing
Time: Jul 31, 2020 10:00 AM Pacific Time (US and Canada)
Dial by your location
+1 253 215 8782 US (Tacoma)
Meeting ID: 707 963 1679
Passcode: 8017

Any person has the right to provide testimony at the public hearing. Written comments may be submitted prior to the hearing. Please address any specific and factual comments about the project to Joey Meisenheimer at the Community Development Department, P. O. Box 1669, Chelan, WA 98816. The project application may be reviewed at the City Planning Department during regular business hours. Copies of the application, staff report, and applicable criteria will be provided at the applicant's cost.
Published in the Lake Chelan Mirror August 5, 2020 #618

Public Notices

City of Chelan Public Notice
Due to the City of Chelan's current Phase 1.5 status which only allows gatherings of up to five people, please note the following changes for the August 11, 2020 Chelan City Council & Lake Chelan Airport Board meetings. Councilmembers and City staff will be participating remotely via videoconferencing. Lake Chelan Now will be broadcasting live audio to listen from home. If you do not have internet access, please contact the City Clerk's Office at 509-682-8019 for alternate accommodations. Citizen comments will not be taken during the meeting but may be submitted in written form no later than 5:00 p.m. on August 11, 2020 to: publiccomments@city-ofchelan.us OR mail to: City Clerk PO Box 1669 Chelan, Washington 98816 Dated at Chelan this 31st day of July, 2020.
Peri S. Gallucci
City Clerk
Published in the Lake Chelan Mirror August 5, 2020. #619

Public Notices

SUMMARY OF ORDINANCE NO. 2020-1581 of the City of Chelan, Washington
On the 28th day of July, 2020, the City Council of the City of Chelan, Washington, passed Ordinance No. 2020-1581. A summary of the content of said Ordinance provides as follows:
AN ORDINANCE OF THE CITY OF CHELAN, WASHINGTON AMENDING THE CHELAN MUNICIPAL CODE REGARDING PENALTIES FOR PARKING VIOLATIONS.
The full text of the Ordinance will be mailed upon request.
DATED this 28th day of July, 2020.
Peri S. Gallucci, City Clerk
Published in the Lake Chelan Mirror on August 5, 2020 # 600

Public Notices

IN THE SUPERIOR COURT OF WASHINGTON COUNTY OF CHELAN
Estate of
JACOB S. MCDONALD,
Deceased.
NO. 20-4-00216-04
PROBATE NOTICE TO CREDITORS
RCW 11.40.030

The personal representative named below has been appointed as personal representative of this estate. Any person having a claim against the decedent must, before the time the claim would be barred by any otherwise applicable statute of limitations, present the claim in the manner as provided in RCW 11.40.070 by serving on or mailing to the personal representative or the personal representative's attorney at the address stated below a copy of the claim and filing the original of the claim with the court. The claim must be presented within the later of: (1) Thirty days after the personal representative served or mailed the notice to the creditor as provided under RCW 11.40.020(3); or (2) four months after the date of first publication of the notice. If the claim is not presented within this time frame, the claim is forever barred, except as otherwise provided in RCW 11.40.051 and 11.40.060. This bar is effective as to claims against both the decedent's probate and nonprobate assets.
DATE OF FIRST PUBLICATION: July 29, 2020
PERSONAL REPRESENTATIVE: Timothy P. McDonald
ATTORNEY FOR PERSONAL REPRESENTATIVE: Jeffrey T. Fehr
ADDRESS FOR MAILING OR SERVICE: Fehr Law Office, PLLC P.O. Box 1606 Chelan, WA 98816 509-682-4536
Court of probate proceedings and cause no.: Superior Court of Washington in and for Chelan County, Cause No. 20-4-00216-04
Published in the Lake Chelan Mirror July 29, August 5 and 12, 2020. #595

Public Notices

SUPERIOR COURT OF WASHINGTON FOR KING COUNTY ESTATE OF JERRY ALLEN GARTON,
Deceased.
NO. 20-4-03684-3 SEA
PROBATE NOTICE TO CREDITORS

The personal representative named below has been appointed as the personal representative of this estate. Any person having a claim against the decedent that arose before the decedent's death must, before the time the claim would be barred by any otherwise applicable statute of limitations, present the claim in the manner as provided in RCW 11.40.070 by serving on or mailing to the personal representative or the attorneys for the personal representative at the address stated below a copy of the claim and filing the original of the claim with the court. The claim must be presented within the later of: (1) thirty days after the personal representative served or mailed the notice to the creditor as provided under RCW 11.40.020(1)(c); or (2) four months after the date of first publication of the notice. If the claim is not presented within this time frame, the claim will be forever barred, except as otherwise provided in RCW 11.40.051 and 11.40.060. This bar is effective as to claims against both the decedent's probate and nonprobate assets.
Date of First Publication: July 29, 2020
Personal Representative: Marcia Garton
Attorneys for Personal Representative: Ryan L. Montgomery, WSBA # 34224
Kaitlyn K. Perez, WSBA # 52953
Address for Mailing or Service: Montgomery Purdue Blankinship & Austin PLLC 701 Fifth Avenue, Suite 5500 Seattle, WA 98104
Court of Probate Proceedings: Superior Court of Washington for King County
Cause Number: 20-4-03684-3 SEA
Published in the Lake Chelan Mirror July 29, August 5 and 12, 2020 # 592

THE WASHINGTON OUTDOORS REPORT

Lake Wenatchee Sockeye

By JOHN KRUSE, THE WASHINGTON OUTDOOR REPORT

Anticipation is running strong for the Lake Wenatchee sockeye season opening August 3. This season is never a sure thing, always dependent on the number of salmon returning up the Wenatchee River to this wood-lined lake in the Central Cascades and there have not been enough salmon returning for a season to take place for several years.

That changed this year with a strong run of sockeye coming up the Columbia River, about 11 percent better than the ten-year average. Travis Maitland, a biologist with the Washington Dept. of Fish and Wildlife, says an estimated 35,000 sockeye are coming to the lake this summer, far surpassing the 23,000 salmon required to meet spawning escapement goals for this species. Because of this surplus we get a season running until Sept. 7 with a four fish daily limit.

There are a few things you should know about the Lake Wenatchee sockeye fishery. First off, you won't be catching any sockeye out of this lake from shore, this is a boat show and unless you own property on the lake (or know someone who does) you've only got two options about where to launch.

The main launch site is at Lake Wenatchee State Park (Discover Pass required) and boats start lining up to launch when the fishing is hot as early as 3 a.m. There is a good launch here but it is crowded and this year, with Covid-19 restrictions at Lake Wenatchee State Park, that may pose a problem.

Because of overcrowding, staff have been closing all entrance into the day use area of the park (by vehicle or foot) once the day use parking lot is full. Speaking with Park Ranger Trevor Wylie about whether this was going to be an issue for anglers and visitors he said he didn't



Photo Courtesy Bob Loomis
Kimberly Loomis holds up a limit of sockeye she and her husband Bob caught out of Lake Wenatchee.

think it would be because most of the anglers are launching at 4 a.m. and are off the water and leaving the park by 10 a.m., which is when the bulk of day use visitors begin to arrive. The one user group that could have a problem accessing the park would be anglers hoping to fish in the late afternoon or early evening.

Another option if you have a car topper boat is to launch at Glacier View Campground (Forest Service Recreation Pass required). There is limited space to park at the day use area here but it is close to the northwest end of the lake where the fish, and most of the anglers, congregate.

As for catching sockeye here the first two weeks of the season are definitely the best and early morning is the time to be fishing for them. Bob Loomis with Mack's Lure out of Wenatchee knows this fishery well and recommends:

1. Looking for the sockeye around 40 feet deep to start and going deeper as the morning progresses.
2. Troll slow. If you are trolling at 2 ½ miles an

hour you are going way too fast. Cut that speed in half and you'll be in the zone.

3. Use a dodger. An 8" dodger will provide not only plenty of flash, but also give action to the lure. Loomis recommends a silver or pink dodger.

4. The traditional offering behind your dodger is a bare red hook (selective regulations are in effect with only a single barbless hook allowed and no bait). However, Loomis recommends fishing a Mack's Lure Double Whammy Sockeye Pro which adds beads and a red mylar Smile Blade spinner to that red hook or a Mack's Cha Cha Sockeye lure with a squid body for better success. The go to colors? Red and hot pink.

5. One other trick specific to this fishery is to use a short leader. Loomis recommends a leader length of only 7 to 18 inches between the dodger and the hook to combine the most attraction and lure action.

Put it all together and you've got a great primer on how to catch sockeye salmon this August in one of the more scenic areas of the state to do so!

Campfire restrictions, fire precaution levels, in Eastern Washington

OLYMPIA – Due to the extremely dry, hot weather, the Washington State Department of Natural Resources (DNR) announced today the following changes in campfire restrictions, industrial fire precaution levels (IFPL) and fire danger ratings on DNR-protected lands. These changes come on the heels of the statewide burn ban on all DNR-protected lands signed July 28 by Commissioner of Public Lands Hilary Franz.

Effective Friday, July 31
Campfires in campgrounds are not allowed in Foothills, Kaniksu, and Upper Basin Fire Danger Rating Areas.

Fire danger will increase from very high to extreme in the Valley Fire Danger Rating Area.

Fire danger will increase from high to very high in the Chelan and Upper Basin Fire Danger Rating Areas.

Fire danger will increase from moderate to high in the Kaniksu Fire Danger Rating Area.

Fire danger rating remains very high in the Lower Basin and Methow Fire Danger Rating Areas

Fire danger rating remains high in the Foothills, Highlands, Lower Yakima, and Upper Ya-

kima Danger Rating Areas.

Effective Tuesday, August 4
IFPL will increase to Level 3 in zones 684 and 686.

IFPL will remain Level 1 in zones 678E, 680, 685, 687, and 688.

IFPL will remain Level 2 in zone 609W, 609E, and 675.

IFPL will remain Level 3 in zone 678.

Burn restrictions remain in place for the following:

Small debris disposal fires (rule burning) are not allowed in Chelan, Foothills, Highlands, Kaniksu, Lower Basin, Lower Yakima, Methow, Upper Basin, Upper Yakima, and Valley Fire Danger Rating Areas.

No burning allowed (written burn permits issued by DNR are suspended) in Chelan, Foothills, Highlands, Kaniksu, Lower Basin, Lower Yakima, Methow, Upper Basin, Upper Yakima, and Valley Fire Danger Rating Areas.

Campfires may be allowed in designated campgrounds. Always check with local campground hosts before lighting a campfire. Additionally, always make sure campfires are completely out before leaving them unattended – if it's too hot to touch, it's

too hot to leave. Counties and local jurisdictions may have additional restrictions.

Daily updates on burn restrictions are available at 1-800-323-BURN (2876) or on the burn portal map at <https://burnportal.dnr.wa.gov/> and IFPL map at <http://www.dnr.wa.gov/ifpl>.

The IFPL system
Industrial Fire Precaution Levels apply to all industrial operations that might cause a fire on or adjacent to lands protected from fire by DNR (WAC 332-24-301); this applies to logging, industrial and forest landowner operations. The levels are established for each of the 38 "shutdown zones" in the state on the basis of National Fire Danger Rating System data.

There are four IFPL levels:

Level 1 (closed fire season): fire equipment and a fire watch are required

Level 2 (partial hoot owl): limits certain activities to between 8 p.m. and 1 p.m.; fire equipment and a fire watch are required

Level 3 (partial shutdown): prohibits some activities and limits others to between 8 p.m. and 1 p.m.; fire equipment and a fire watch are required

Level 4 (general shutdown): prohibits all activities

Looking for a home for your Furry friend?
Try the pet section on **NCWMarket.com**