

## Lake Chelan Health Board to hold Community Forum Jan. 16

CHELAN - Lake Chelan Health Board of Commissioners invite the community to take part in the upcoming Community Forum, Monday, January 16, beginning at 5:30 p.m. Hear highlights for 2022 and what's ahead for 2023. This important meeting will be held at the new Lake Chelan Hospital at 110 S. Apple Blossom Drive. All are welcome to attend in person or join the meeting virtually. Meeting login information is available at lakechelanhealth.org. For question, more information: email info@lch.net

## Lake Chelan Valley Events, Things to do, Meetings

### Lake Chelan Nordic Club memberships/Echo Ridge

CHELAN - Season Passes and Lake Chelan Nordic Club memberships can be purchased on the website at LakeChelanNordic.org, where you will also find current conditions at Echo Ridge.

### Chelan Museum: Closed Jan.-Feb.

CHELAN - The Chelan Museum will be closed the months of January and February. They will reopen on March 1. They will be open by appointment. Call 509-682-5644. The museum is located at the corner of Woodin Avenue and Emerson Street.

### SAIL Exercise Classes: Jan. 11-12, 16-17

CHELAN - SAIL (Stay Active & Independent for Life) fitness classes are offered at Chelan Senior Center on Monday and Wednesday at 1 p.m. and are taught by Beth Shaw and Linda Hollier. Evening SAIL classes are Monday and Thursday evenings at 5:30 p.m., also at the Chelan Senior Center and are taught by Ann Cooper. A SAIL class is offered to residents of Heritage Heights Assisted Living in Chelan on Mondays and Fridays at 2 p.m. taught by Gaylen Willett and Steve Davis.

### Household hazardous waste drop off:

#### Jan. 11-13

#### Latex paint now accepted - Drop off Saturday, Feb. 4

WENATCHEE - Drop-off Saturday is Feb. 4 at the Chelan County Moderate Risk Waste Facility on Highway 97A. The facility is open the first Saturday of the month, from 9 a.m. to 4 p.m. Every week, they are open Tuesday through Friday the same hours. Drop off your household hazardous wastes and latex paint. This is a free service to Chelan County residents. For a full list of items that the facility does and does not accept, go to the facility's website: <https://www.co.chelan.wa.us/solid-waste-management/pages/household-hazardous-wastes>.

### Chelan Senior Meals: Jan. 11-13, 16-18

CHELAN - The Chelan Senior Center at 534 E. Trow Avenue, hosts Senior Meals Monday-Friday. Suggested donation for seniors over age 60 is \$4. Fee for persons under age 60 is \$10. Please call 509-888-4440 to reserve meals 24 hours in advance. For information about Home Delivered Meals call 509-470-0522. You can visit their website at [www.octn.org](http://www.octn.org) and follow them on Facebook. Donations can be mailed to: OCTN P.O. Box 471 Okanogan, WA 98840. Menu: Jan. 11: Beef Tacos, Spanish Rice, Fresh Salsa, Pineapple Tidbits, Dessert; Jan. 12: Chicken & Wild Rice Bake, Coleslaw, Tropical Fruit, WW Roll, Dessert; Jan. 13: Chili Stuffed Potato, Chuck Wagon Corn, Tossed Green Salad, Apricots, Cornbread, Dessert; Jan. 16: CLOSED (Martin Luther King Jr. Day holiday); Jan. 17: Pot Roast with Potatoes and Carrots, Tossed Green Salad, Peaches, WW Roll, Oatmeal Cookies; Jan. 18: Oven Fried Chicken, Scalloped Potatoes, Buttered Corn, Spiced Salad, Orange Quarters, WW Roll, Dessert.

### Chelan Valley Hope: Jan. 11-12, 18-19

CHELAN - Monday, January 16, we honor Dr. Martin Luther King Jr., an extraordinary American whose legacy as a civil rights leader, activist, and recipient of the Nobel Peace Prize serves as an inspiration. We honor the conviction - and in some cases great sacrifices - of the many who have fought and who continue to fight for equality and opportunity for all. Dr. King once said, "Life's most persistent and urgent question is, 'What are you doing for others?'" He dreamed of a nation in which every person would be equal, and he devoted his life to advancing equality, social justice, and economic opportunity for all. Celebrating Dr. King's legacy should mean finding more ways to bring hope and healing to the community. It should mean identifying what human dignity looks like and pushing it forward. It should mean boldly pursuing truth and justice, dignity, and service.

Friendly Reminder: Chelan Valley Hope is closed on Monday, Jan. 16 in honor of Martin Luther King Jr. Day.

They have coats of all sizes available at 417 S. Bradley Street. We are open Monday thru Thursday 9 a.m.-3 p.m. (closed from Noon to 1 p.m.). Please call 509-888-2114 or email [info@chelanvalleyhope.org](mailto:info@chelanvalleyhope.org) for more information. You can also visit our website and follow us on Facebook and Instagram to get the latest CVH news and updates at [chelanvalleyhope.org](http://chelanvalleyhope.org), @ChelanValleyHope.

### VFW #6853 Post Coffee/Donuts: Jan. 13

CHELAN - Every Friday VFW Post #6853, located at 427 S. Bradley Street is open 9-11 a.m. for donuts and coffee and conversation. Veterans are invited to join them every Friday.

### Food Bank food distribution: Jan. 14, 17-21

CHELAN - The Lake Chelan Food Bank food giveaway is on Saturday and Tuesday, 9-10 a.m. Distribution is drive-thru. They are located at 417 S. Bradley Street. Beginning this week families will be limited to one box per week. Nonperishable food donations can be dropped off at the Lake Chelan Mirror office, 131 S. Apple Blossom Drive, Ste. 109 (Chelan Business Center.)

### Glass recycle: Jan. 14

#### Winter Hours: 10 a.m.-Noon

CHELAN - Rotary of Lake Chelan 911 Glass Rescue is open on Saturday mornings from 10 a.m.-noon, at 23235 Highway 97A across from Walmart. They are charging a small fee per pound for glass drop-off. Buckets of the materials produced, sand and aggregate, will be available for purchase at \$5 per 5-gallon bucket. City of Chelan residents are asked not to put glass into their blue recycle bins, but to bring it out on Saturday mornings. Their all-volunteer team relies on support from members of the community to make the operation run smoothly every week. They have tasks suitable for all ages and

CONTINUED ON PAGE A3

# Food Bank serves over 8,900 families in 2022

By RUTH EDNA KEYS,  
STAFF WRITER

The Lake Chelan Food Bank celebrated 40 years of service to the Lake Chelan Valley in 2022. Lots of volunteers have invested time, food and love into the food bank in those 40 years, so that those in need can reap the generosity of others at no charge. In 2022 they served 8,983 families, 689 of those new families, 28,138 individuals, gave away 8,809 boxes of food, which totaled 461,950 pounds of food.

In 2021 they served 6,173 families, 21,175 individuals, 373 new families, gave away 8,176 boxes of food, which totaled 566,990 pounds.

They serve an average of 60 families on Tuesdays and 100 on Saturdays.

Across the country, food banks are struggling to get enough donated food and Second Harvest, one of the ways the food bank receives food is experiencing the same thing. Beginning this week families will be limited to one box per week.

The food bank appreciates all the peanut butter and jam that was donated during their drive in December.

**How you can help:** Non-perishable food donations (Cereal, boxed entrees, soup-not tomato, canned meats, chili, canned vegetables, peanut butter, jam, and small bags of pet food), may be dropped off in the Lake Chelan Food Bank bins at these local businesses: Campbell's Resort, Lake Chelan Building Supply in Manson, Lake Chelan Chamber of Commerce and at the Lake Chelan Mirror office. Monetary donations may be mailed to Lake Chelan Food Bank, PO Box 2684, Chelan, WA 98816 or go to [www.lakechelanfoodbank.org](http://www.lakechelanfoodbank.org)



Matthew Ockinga/LCM File Photos

ABOVE: Volunteers at the Lake Chelan Food Bank place fresh vegetables into to-go boxes on July 2. Each family receives one box containing 40-50 pounds of food.

BELOW: The Lake Chelan Food Bank volunteers pack food into boxes. Guests can pick up food on either a Tuesday or a Saturday beginning at 9 a.m., at 417 S. Bradley Street in Chelan.



## Lake Chelan School District Board of Directors recognized for their service

SUBMITTED BY BRAD WILSON  
SUPERINTENDENT, LAKE CHELAN  
SCHOOL DISTRICT

CHELAN - By proclamation of the governor, January is School Board Recognition Month. It's a great time to recognize our elected community members who selflessly give their time and energy in support of high-quality public schooling for our youth. School board members in Lake Chelan School District are entrusted by this community with responsibility for an annual budget of \$28 million, 1273 students, over 200 employees, and seven buildings.

School boards are charged with making decisions that can sometimes be quite difficult or require sifting through a great deal of information. They also bear responsibility for developing a vision that will guide the school district for years to come. Through collaboration as a team, and with school district staff, their governance and advocacy are building the future of education in Washington state.

This January, we're en-



Kim Thorpe



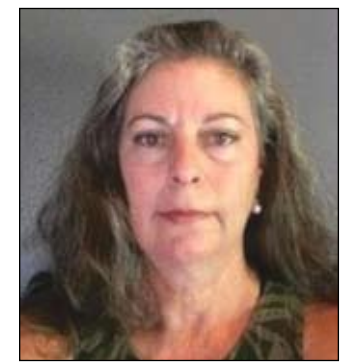
Jeff Fehr



Barb Polley



Erik Nelson



Stephanie Fuller

couraging all members of the community to thank a board member. Please thank them for volunteering their time and playing a critical civic role that helps form the bedrock of our democracy—public education. As a crucial bridge between the local community and the school district, their efforts are instrumental in helping all of us realize the hopes and dreams we have for the children of our community.

The men and women serving Lake Chelan School District and their years of service are:

- Kim Thorpe, Board Chair with three years of service
- Jeff Fehr, Director with nine years of service

- Barb Polley, Director with 1 1/2 years of service
- Erik Nelson, Director and WIAA Representative with one year of service
- Stephanie Fuller, Board Vice Chair and Legislative

Representative with one year of service

For more information about the Lake Chelan School Board, visit <https://www.chelan-schools.org/district/school-board/>

## INSIDE THIS WEEK

Community .....	A1-A4
Meetings/Events .....	A1, A3
Government .....	A2
Church News .....	A2
Obituaries/Death Notices .....	A3
Sheriff/EMS/Fire Reports .....	A3
Sports/School .....	A4

Horticulture .....	B1-B2
Business & Services & Health Care Directory .....	A2

<b>Classified Index</b>	
Classifieds, Puzzles .....	B3-B4
Public Notices .....	B3-B4
Puzzles .....	B4

8 08805 93176 1 \$1

131 S. Apple Blossom Drive, Ste #109,  
P.O. Box 1922  
Chelan, WA 98816-1922  
509-682-2213  
[www.lakechelanmirror.com](http://www.lakechelanmirror.com)



# Chelan's St. Andrew's Episcopal Church bids adieu to long-serving Vicar

By TERRY J. LABRUE

CHELAN - "Wow, how time flies." was Rev. Linda Mayer's observation as she announced last Sunday, (Jan. 1) the next weekly service would be her last as priest of the historic St. Andrew's Parish in Downtown Chelan.

Mayer was ordained a priest by then-Bishop James E. Waggoner Jr. of the Episcopal Diocese of Spokane during a June 5, 2010 ceremony at St. Luke's in Wenatchee.

At the remarkable age of 67, Mayer began her exciting new career when most people are considering retirement. But, the effervescent and ever-smiling priest was looking forward to an exciting life and uncharted challenges after working for the Lake Chelan and Wenatchee school districts after moving to North Central Washington in the late 1960's. She has been a central force and resident of Chelan for more than 45 years with her late husband, Rudy, who worked for the Chelan PUD and whom she married in 1974.

Serving as the principal of her own bookkeeping and secretarial service for 10 years, she changed gears and retired for a time in 1991. Together, she and Rudy traveled the world and resided in a vacation home in Arizona.

A native of British Columbia, Mayer was born in Vancouver,

and lived in various locations in the province. Her father was a mining master mechanic and moved the family to different mine sites in search of gold, tungsten and lead.

Referring to herself as a "cradle Episcopalian," Mayer was involved in the Canadian Anglican Church from an early age. Her memories of the Westminster Chimes, which currently ring from St. Andrew's belfry on the quarter hour, have been a reassuring constant for her entire life. Two years ago, the parish funded a wall display that spells the lyrics of the familiar chimes and introduces the music to visitors and parishioners who stroll through the immaculate church garden.

Mayer began her association with St. Andrew's as an active member of the parish, first as serving on the altar guild, Sunday School, treasurer, Vestry member, senior warden, worship leader, and eucharistic visitor. She stated at the time of her ordination that she sought training to become a church deacon in 2004 to help give the parish "a sense of continuity between Rectors."

The rugged, log-cabin style structure that is the home of St. Andrew's, is the oldest continually used permanent structure in Chelan. For more than 114 years, St. Andrew's has welcomed generations of members and welcomes visi-



Courtesy Terry J. LaBrue

The Right Reverend Bishop Gretchen M. Rehberg, of the Episcopal Diocese of Spokane (left), and (right) the now retired Rev. Linda Mayer of St. Andrew's Episcopal Church in Chelan.

tors to the valley. St. Andrew's currently counts approximately 100 members.

She said it was during her training for the priesthood -- a lengthy process that includes summer seminary sessions, ministry weekends, and online classes -- that diocesan leaders surprised her with their assessment of her future in the church.

"They told me I'd be better as

a priest," she said.

Mayer heeded their advice and completed training to become a priest, a process that has given her a life a "...deeper sense of meaning."

"I'd like to say I'm at peace, but I was at peace before (becoming a priest)," she said with a smile.

However, Mayer offers kudos to one person of particular importance Linda Cox. She was

on this particular faith journey and has been senior warden during her entire time leading the St. Andrew's congregation. "Linda Cox has joined me every year at Convention making the long drives to various parts of the diocese a fun time," said Mayer.

Looking back on her 12 years serving the parishioners and the wider secular community of Chelan, she remarked that

as a priest, she has helped many people. Mayer has officiated at more than 700 weddings, memorial services and baptisms, Holy weeks, Sunday services, the blessing of countless animals, and even the new Lake Chelan Health Hospital campus.

During the COVID-19 lockdown, keeping her flock together was an extra effort. "We couldn't even hold church, so the phone call was necessary," she recalled. "It was family checking on family -- we did it."

Ever pragmatic, Mayer observed, "Being part of the church you just need to do what needs to be done. Many (parishioners) have taken their place doing all sorts of things."

"As I said when I was first ordained, 'God put me where he wants me to be ... to do the things he wants me to do.'"

"I am proud that my weekly sermons are simple and direct to the point. They are easy to understand, considering I need to understand them first, so it has to be simple," she said with a laugh. "The most important gift of being a priest is to be flexible. You never know what's going to happen next. You simply cannot be rigid."

"So Jesus said we are all family -- those who do the will of God. We at St. Andrew's have a great family -- everyone helping to do the will of God," Mayer added.

## Chelan Valley Republican Women to meet January 13

Manson - Chelan Valley Republican Women (CVRW) will hold their January 2023 club meeting at Radiance Winery, Downtown Manson location, 71 Wapato Way, Friday, January 13, at 12 p.m.

Guest speakers include Attorney Tracy Tribbett from the Pacific Justice Institute. Pacific Justice Institute advocates for those whose religious freedoms, parental rights and sanctity of life is threatened or violated by private employers or government entities. Also, Kim Hudgins, Executive Director of Life Choices Wenatchee, whose mission is to provide women evidence based reproductive health services and education so they are able to make informed choices about their sexual health in a respectful environment.

A luncheon menu will be available for \$25, including tax and tip. Please RSVP your attendance and if you plan to purchase lunch. Any questions, contact Pam James, club president, at 425-343-2911.

## Rep. Mike Steele reappointed ranking member on House Capital Budget Committee

SUBMITTED BY KELLEY PAINE, SPIO, WASHINGTON STATE HOUSE REPUBLICANS

OLYMPIA - Rep. Mike Steele, R-Chelan, has been reappointed to serve as the ranking member on the House Capital Budget Committee.

Steele has been the lead Republican on the committee since 2021, serving as the assistant ranking member prior to that. This continued assignment makes him a top negotiator and budget writer for the state's two-year construction budget.

The Capital Budget Committee approves money for the construction and repair of public buildings and other long-term investments, such as land acquisitions and

transfers. Additionally, the committee considers grants and loans to local governments or nonprofit organizations for infrastructure, broadband, housing, and cultural and heritage facilities.

"It's an incredible honor to be reappointed to this leadership role," said Steele. "The capital budget is unique in that it is by far the most bipartisan committee in Olympia. Both sides of the aisle work together to prioritize and advance projects that not



Rep. Mike Steele, R-Chelan

only improve long-term economic goals, but also enhance renewal, health, and growth for rural and urban communities alike."

The 12th District lawmaker was also reappointed to serve on the House Appropriations Committee and Education Committee.

The Appropriations Committee considers the operating budget and related legislation, budget processes, and fiscal issues such as pension policy and compensation.

The Education Committee considers issues relating to kindergarten through twelfth grade (K-12) education.

"Serving on the Appropriations Committee gives me a unique opportunity to protect our citizens' hard-earned tax dollars, advocating for a fiscally prudent state budget - while working against irresponsible state spending," said Steele.

"How we educate our youth, teaching them to think critically and be prepared for life, is incredibly important to the future of Washington state," added Steele. "I'm deeply thankful to have been selected to continue as a member of the Education Committee in the coming session."

The 105-day legislative session convened on Jan. 9.

## Business & Services Directory

### INSURANCE

**You're healthy ... until you're not**

- Got questions about Medicare?
- or Health Insurance?
- Turning 65?
- Retiring soon?



Give Kelly Allen a call  
**509-888-9038**



Kelly@KellyAllenAgency.com • www.KellyAllenAgency.com

**Add your Business or Service to this Directory**  
**Call Today! Ruth, 509-682-2213**  
**Lindsay, 509-860-7301**

**Prepare for power outages today**

WITH A HOME STANDBY GENERATOR

**\$0 MONEY DOWN + LOW MONTHLY PAYMENT OPTIONS**

Contact a Generac dealer for full terms and conditions

**REQUEST A FREE QUOTE**

CALL NOW BEFORE THE NEXT POWER OUTAGE

**(877) 330-1491**

**FREE** 7-Year Extended Warranty\* - A \$695 Value!

\*To qualify, consumers must request a quote, purchase, install and activate the generator with a participating dealer. Call for a full list of terms and conditions.

**GENERAC**



## Obituary & Memorial Policies

NCW Media, Inc.: Leavenworth Echo, Cashmere Valley Record, Lake Chelan Mirror, Quad City Herald

An Obituary is a way for family member(s) to commemorate a loved one's life and to notify the community of the passing of the loved one. Obituaries are also used for historical and ancestral data.

Memorials are another way to let the community know about the life and memories of the person who has passed. A Memorial is different from an Obituary. An Obituary is usually current, while a Memorial can be written later.

Obituaries and Memorials need to be typed and emailed as a Word Document. They can be placed in one or more papers - all publish weekly on Wednesday.

Obituaries are priced by the number of words and include one color photo and go online at no extra charge. Memorials are priced per column inch. Please call for cost. \*Payment is due at the time of placement. \*Exception: Chapels, funeral homes who have an account, can be billed. There is no charge for a Death Notice - information is limited.

Deadline is 4 p.m. on Friday - some exceptions may apply.

Please call 509-682-2213 for more information  
Or email ruthk@lakechelanmirror.com

## LAKE CHELAN MIRROR

© NCW Media Inc. 2023  
131 S. Apple Blossom Drive #109,  
P.O. Box 1922, Chelan, WA  
98816-1922  
Phone: 509-682-2213

### Office Hours

Mon. to Fri. 9:00 a.m.-5:00 p.m.

### On The Internet

Website:  
www.lakechelanmirror.com  
News e-mail:  
lcmirror@gmail.com  
Advertising e-mail:  
ruthk@lakechelanmirror.com

### Services

Back issues are available up to one year after publication for a small fee.

### Contact Information

#### Publisher

Carol Forhan • 509-548-5286  
publisher@leavenworthecho.com  
Bill Forhan, Publisher, Ex Officio

Reporter/Photographer  
lcmirror@gmail.com

Reporter/Photographer  
Michael Maltais  
qchreporter@gmail.com

Advertising Sales Director  
Carol Forhan • 509-548-5286  
carol@leavenworthecho.com

Advertising Sales Chelan  
RuthEdna Keys • 509-682-2213  
ruthk@lakechelanmirror.com  
Lindsay Timmermans  
509-860-7301  
adexec1@ncwmedia.net

### Contact Information

#### Classifieds/Legals

Laura Husa  
mirrorads@lakechelanmirror.com  
Circulation: 509-293-6780  
Laura Husa  
circulation@lakechelanmirror.com

#### Classifieds/Legals

Classified/Legals ads can be placed during normal office hours by calling 509-682-2213, email: mirrorads@lakechelanmirror.com

**Weekly rates:**  
\$15.00 for the first 30 words  
10 cents per word over 30 words

Borders, bold words, headlines, logos, photos subject to additional charges.

Place your ad online 24/7  
www.ncwmarket.com

### Deadlines

Letters to the Editor: Noon, Friday  
Calendar Listings: Noon, Friday  
News Submissions: Noon, Friday  
Display Advertising: 5 p.m., Thurs.  
Legals: Noon, Friday  
Classified Ads: Noon, Friday  
Obituaries/Death Notices: 4 p.m., Friday

### Subscriptions

Chelan/Douglas Counties (yearly) print \$40  
Chelan/Douglas Counties (yearly) print & web \$45  
In State (yearly) \$50  
Out of State (yearly) \$52  
Online only (yearly) \$40

The Lake Chelan Mirror does not refund subscription payments except to the extent that it might fail to meet its obligation to publish each week, in which case the cost of the issues missed would be refunded as an extension. Subscriptions may be transferred to another individual or organization.

### Letters policy

The Lake Chelan Mirror welcomes letters to the editor. All letters must be accompanied by the author's name, a home address and a daytime phone number (for verification purposes only). Letters may be edited for length, clarity, accuracy and fairness. No letter will be published without the author's name. Thank you letters will only be printed from non-profit organizations and events. We will not publish lists of businesses, or lists of individual names. Email your letters to: ruthk@lakechelanmirror.com or publisher@leavenworthecho.com

### News Tips

Have an idea for a story?  
Call the Mirror at 509-682-2213

### Corrections

The Lake Chelan Mirror regrets any errors. If you see an error, please call 509-682-2213. We will publish a correction in the next issue.

Lake Chelan Mirror (USPS 101-620) is published every Wednesday by NCW Media, Inc.  
131 S. Apple Blossom Drive #109, Chelan, WA 98816  
Telephone: 509-682-2213

Periodical postage paid at Chelan, Wash. 98816

Postmaster:  
Send address corrections to:  
Lake Chelan Mirror,  
131 S. Apple Blossom Drive, #109, Chelan, WA 98816

NCW Media Inc. prints on recycled newspaper with soy ink. Please Recycle



NCW MEDIA  
Bringing the community to your door



**COMMUNITY BULLETIN BOARD**

Local, Regional Community News & Events

- Any non-profit 501(c)-(3) group, person(s).
- Must provide: full name, city, phone number.
- Items pertaining to local events that are free or minimum charge.

- Want to place Your Community News Online? Go to NCWMARKET.COM 24/7
- Garage and Yard Sale Ads are paid events, please email those to mirrorads@lakechelanmirror.com or NCWMARKET.COM
- For more info call: Lake Chelan Mirror at 509-682-2213
- Email to: ruthk@lakechelanmirror.com

CONTINUED FROM PAGE A1

abilities. To volunteer go to [www.911glassrescue.org](http://www.911glassrescue.org), and click on the volunteer tab on the home page.

**Mobile Food Pantry: Jan. 12**

MANSON - The Mobile Food Pantry will be at North Shore Bible Church on Thursday, Jan. 12, noon- 2 p.m. All are welcome. It is a walk thru format and guests pick their own food. This is a regular stop every second Thursday of the month.

**Lake Chelan Winterfest: Jan. 13-22**

LAKE CHELAN - Lake Chelan Winterfest is coming January 13-22. Features will include intricate ice sculptures, two spectacular fireworks shows, the infamous Ice Bar, live music, kid's activities, and more across the Lake Chelan Valley. Winterfest buttons are now on sale at the Lake Chelan Chamber for \$10. These buttons give exclusive access to extra discounts and deals at participating businesses and wineries throughout the duration of Winterfest, as well as access to activities like the Ice Bar and Ice Slide. For more information and a list of Winterfest activities, visit [LakeChelan-Winterfest.com](http://LakeChelan-Winterfest.com).

**Family and friends Support Group: Jan. 16**

WENATCHEE - Family and friends Support Group meets the 3rd

Monday of every month, 7-8:30 p.m., at Grace Lutheran Church, 1408 Washington Street, Wenatchee. For information, call 509-860-3620 or visit their website at: [tcfwenatcheevalley.org](http://tcfwenatcheevalley.org)

**Chronic Disease Support Group: Jan. 19**

CHELAN - With the support of Aging and Adults and Tender Loving Care for Seniors, an Alzheimer's Support Group for Chelan/Manson area has restarted. They have opened this meeting to family caregivers of people who have any serious chronic conditions: cardiac, pulmonary, neurologic (post stroke, Parkinson's Disease, MS) and others. Meetings will be the third Thursday of the month, 10 a.m.-12 p.m. at Chelan Valley Hope, 417 S. Bradley Street. Aging and Adults is providing the facilitator, Bob Poindexter, who has great experience in leading support groups. Please join them to be encouraged by spending time sharing with others who are on this journey. For more details please call Claudia Swenson, Manager, TLC for Seniors, 360-561-6090.

**Grange Youth Fair Program signups: Jan: 23**

MANSON - The Manson Grange Youth Fair Program will launch next month in February. Signups for the program for youth five to 19-years-of-age in the Manson and Chelan School Districts, will be held on January 23, 6 p.m., upper floor of the Manson Grange Hall on Wapato Way. Families will complete paperwork and join the Manson Grange. Membership is \$90 per year. Grange Youth Fair Program offers young

members the opportunity to exhibit at county fairs and expositions and works alongside other nationally-recognized programs like 4-H and FFA. The mission and purpose of the Grange Youth Fair Program is to provide an opportunity for young Grange members to participate in an educational setting designed to increase confidence, strengthen character, learn invaluable life skills and teach the importance of self-discipline. Applications are currently being accepted for "family membership" in the Grange with the first official meeting of the Youth Fair program in February. Application and other forms can be downloaded from the Manson Grange's website [www.mansongrange.com](http://www.mansongrange.com). For more information: Norm Manly at 509-293-0225.

**OBITUARIES**

**Carol Lousie Sallas (Postelwait)**



Carol Lousie Sallas (Postelwait), 61, of Manson, Washington, formerly of Chelan, Washington, passed away suddenly, on January 2, 2023 at Lake Chelan Health Hospital.

Carol, the last of six children, was born in Wenatchee, Washington, to Colleen and Charlie Postelwait on December 3, 1961. She attended Manson High School and first became a mother at the age of 21. She worked many jobs (on occasion, multiple ones at the same time) to support her family as a single parent. She was a devoted mother of six and a loving grandmother to 10 grandchildren. She enjoyed gardening, like her father before her, and watching her grandbabies grow. Carol was kind to everyone that she met and treated everyone like family. She was called "Aunt Carol" or "Tia" by many that were not related to her by blood, but by the kindness that she shared with them. Her personality, smile, and her hugs will be missed by her family, friends, and all that knew her.

Carol was preceded in death by her mother and father, Colleen and Charlie; and her brother, Craig. She is survived by her two daughters and four sons, her two sisters and two brothers, as well as her 10 grandchildren, a host of nieces, nephews, and cousins; and many, many friends. Services will be held at Precht Rose Chapel, 332 E. Woodin Ave. in Chelan on Saturday, January 14, 2023, at 11 a.m. with her family officiating the service. Flowers and condolences will be offered there. A GoFundMe page has been set up for donations to help cover memorial costs and can be found at <https://www.gofundme.com/f/s4m8gg-to-help-pay-for-funeral-services/donations?qid=de55f5161d145a5063c68dcd346502e8> or by searching "Danielle Juarez" on [gofundme.com](http://gofundme.com).

The family has chosen Precht Rose Chapel, in Chelan, WA, for her care. Please leave your thoughts and memories at [www.prechtrose.com](http://www.prechtrose.com).

**CHELAN COUNTY SHERIFF/FIRE/EMS**

**Chelan County Sheriff's**

**Dec. 30**

- 00:37 Miscellaneous, Three Fingers, Chelan
- 01:54 911-call, 545 Junction Ln.
- 02:43 Extra Patrols, US Hwy. 2 MP 99
- 10:14 Weapons Violation, 555 1st St., Chelan Falls
- 11:32 Agency Assist, E. Gibson Ave. and N. Markeson St., Chelan
- 12:12 Agency Assist, 270 Bright Ct., Manson
- 12:38 Juvenile Problem, 2441 SR 150, Manson
- 13:24 Welfare Check, US Hwy. 97A and S. Apple Blossom Dr., Chelan
- 14:07 Trespassing, 108 N. Apple Blossom Dr., Walmart, Chelan
- 15:00 Trespassing, 106 W. Manson Rd., Safeway, Chelan
- 17:13 Suspicious Circumstance, E. Wapato Ave. and S. Robinson St., Chelan
- 19:41 Hazard, SR 150 and Boyd Rd., Chelan

**Dec. 31**

- 10:24 Agency Assist, N. Eli St. and E. Gibson Ave., Chelan
- 10:59 Sex Offense, 721 Manson Blvd., Manson
- 11:17 Welfare Check, Chase Ave. and Lakeshore Dr., Manson
- 17:49 Trespassing, 518 W. Manson Rd., Chelan
- 20:55 Burglary, 123 N. Apple Blossom Dr., Chelan
- 23:08 Fireworks, 5th and 6th Streets, Chelan Falls

**Jan. 1**

- 02:50 Agency Assist, 182 Wapato Way, Manson
- 09:14 Welfare Check, 106 W. Manson Rd., Safeway, Chelan
- 09:43 Warrant, W. Allen Ave. and N. Cedar St., Chelan
- 12:41 Traffic Offense, 108 N. Apple Blossom Dr., Walmart, Chelan
- 12:49 Welfare Check, E. Wapato Ave. and S. Sanders St., Chelan
- 14:50 Suspicious Circumstance, 127 Wells Ave., Manson
- 17:26 Burglary, 299 Great Horned Owl Ln., Manson
- 17:37 Civil Dispute, 644 Union Valley Rd., Chelan

**Jan. 2**

- 03:48 Agency Assist, US Hwy. 97A MP 227, Chelan
- 04:08 Burglary, 611 E. Woodin Ave., All Seasons Rentals, Chelan
- 10:11 Non-injury Accident, 100 block E. Woodin Ave., Chelan
- 10:31 Parking/ Abandoned Vehicle, 224 Crystal Dr., Chelan

**Chelan EMS**

- 09:28 Fall-2, 2901 Lakeshore Dr., Manson
- 11:32 Unknown Problem, E. Gibson Ave. and N. Markeson St., Chelan
- 11:59 Breathing Problem, 1765 Summit Blvd., Manson
- 12:04 Chest Pain, 613 N. Markeson St., Chelan
- 12:12 Sick Person, 270 Bright Ct., Manson
- 14:10 Chest Pain, 219 E. Johnson Ave., Chelan
- 15:28 Choking, 11155 S. Lakeshore Rd., Chelan

**Jan. 3**

- 03:46 Diversion, 2810 Manson Blvd., Manson
- 07:33 Harassment/ Threat, 1000 Totem Pole Rd., Manson
- 08:28 Burglary, 274 Summer Breeze Rd., Manson
- 11:27 Malicious Mischief, 14025 S. Lakeshore Rd., Chelan
- 13:34 Theft, 6025 Entiat River Rd., Entiat
- 15:07 Suspicious Circumstance, 117 Stormy Mountain Way, Chelan
- 21:34 Welfare Check, 2441 SR 150, Manson
- 21:50 Diversion, 309 E. Gibson Ave., Chelan
- 23:54 Domestic Disturbance, 130 Olive Ave., Manson

**Jan. 4**

- 02:22 Warrant Arrest, 100 Lake Chelan Shores Dr., Chelan
- 08:41 Court Order Violation, 35 Leisure Ln., Manson
- 08:43 Civil Dispute, 1000 Totem Pole Rd., Manson
- 14:52 Traffic Offense, SR 150 and Sunrise Dr., Manson
- 15:59 Non-injury Accident, 105 S. Apple Blossom Dr., CVCH, Chelan
- 19:33 Suspicious Circumstance, 105 Vineyard Ln., Chelan
- 22:07 Suspicious Circumstance, 170 Howling Moon Ln., Chelan

**Jan. 5**

No report available.

**Fire/ EMS**

**Dec. 30**

- Chelan Fire District #7**
- 11:32 Unknown Problem, E. Gibson Ave. and N. Markeson St., Chelan
- 12:04 Chest Pain, 613 N. Markeson St., Chelan
- 12:12 Sick Person, 270 Bright Ct., Manson
- 14:07 Odor, S. Bradley St. and E. Sayles St., Chelan
- 14:10 Chest Pain, 219 E. Johnson Ave., Chelan
- 15:28 Choking, 11155 S. Lakeshore Rd., Chelan
- 19:29 Commercial Alarm, 505 E. Highland Ave., Heritage Heights, Chelan
- 20:23 Commercial Alarm, 505 E. Highland Ave., Heritage Heights, Chelan

**Chelan Fire District #7**

- 06:50 Breathing Problem, 205 Raven Crest Ln., Chelan
- 06:50 Breathing Problem, 205 Raven Crest Ln., Chelan
- 21:53 Eye Problem, 200 Green Ave., Manson
- 11:51 Sick Person, 505 E. Highland Ave., Heritage Heights, Chelan
- 15:23 Fall-2, 9 Fredrick Ct., Orondo
- 16:51 Breathing Problem, 200 Green Ave., Manson
- 17:37 Sick Person, 130 Olive Ave., Manson
- 22:07 Breathing Problem, 170 Howling Moon Ln., Chelan

**Entiat Fire District**

- 08:18 Stroke, 102 Fair Way, Chelan
- 10:24 Unconscious Person-2, N. Eli St. and E. Gibson Ave., Chelan

**Dec. 31**

- 00:30 Commercial Alarm, 215 W. Webster Ave., Chelan
- 08:18 Stroke, 102 Fair Way, Chelan
- 10:24 Unconscious Person-2, N. Eli St. and E. Gibson Ave., Chelan

**Chelan EMS**

- 08:18 Stroke, 102 Fair Way, Chelan
- 10:24 Unconscious Person-2, N. Eli St. and E. Gibson Ave., Chelan

**Entiat Fire District**

- 18:41 Chest Pain, 5438 Entiat River Rd., Entiat

**Jan. 1**

No local reports

**Jan. 2**

- Chelan Fire District #7**
- 04:27 Breathing Problem, 70 Isenhardt Rd., Chelan

**Chelan EMS**

- 04:27 Breathing Problem, 70 Isenhardt Rd., Chelan
- 05:33 Fall-1, 398 Totem Pole Rd., Manson
- 08:15 Cardiac, 139 Chandler Rd., Manson
- 18:11 Sick Person, 25 Ustah St., Manson

**Entiat Fire District**

- 22:57 Fall-1, 14611 Diamond Ave., Entiat

**Manson Fire District**

- 08:15 Cardiac, 139 Chandler Rd., Manson

**Jan. 3**

**Chelan Fire District #7**

- 06:50 Breathing Problem, 205 Raven Crest Ln., Chelan
- 06:50 Breathing Problem, 205 Raven Crest Ln., Chelan
- 21:53 Eye Problem, 200 Green Ave., Manson

**Jan. 4**

- Chelan Fire District #7**
- 11:51 Sick Person, 505 E. Highland Ave., Heritage Heights, Chelan

**Chelan EMS**

- 11:51 Sick Person, 505 E. Highland Ave., Heritage Heights, Chelan
- 15:23 Fall-2, 9 Fredrick Ct., Orondo
- 16:51 Breathing Problem, 200 Green Ave., Manson
- 17:37 Sick Person, 130 Olive Ave., Manson
- 22:07 Breathing Problem, 170 Howling Moon Ln., Chelan

**Jan. 5**

No report available.

**PLINKO AT THE DISCO**

Try your luck on our dance floor and win a chance at your choice of \$30,000 CASH or \$50,000 credit to Jess Auto

**SELECT DAYS IN JANUARY AND FEBRUARY**

28968 HIGHWAY 97 | OMAK, WA 98841  
509.422.4646 | COLVILLECASINOS.COM

TRIBES LAKE CHELAN CASINO

**CHURCH GUIDE**

New to the area? On Vacation? These churches welcome you!



**• CHELAN**

**CHELAN CHRISTIAN CHURCH**  
Morning Worship 10 am  
509-682-2025 • 210 E. Wapato Ave.  
Pastor Mark Wilton

**CHURCH OF THE NAZARENE**  
Sunday School 10 am  
Worship 11 am & 6 pm  
Youth Group - Friday 7 pm for 13-18 years of age  
509-682-5135 • Sanders St. & Okanogan Ave.

**LAKE CHELAN LUTHERAN CHURCH**  
Please join us for Sunday Worship In Person or via  
Conference Call at 9:30 am. Dial 339-209-6617. Follow prompts.  
509-682-9063 • 216 W. Nixon Ave.

**• CHELAN**

**LAKE CHELAN UNITED METHODIST CHURCH**  
Worship 10 am  
509-682-2241  
Corner of Johnson & Emerson

**LIVING STONE CHURCH**  
Please join us as we gather each Sunday at 10 am  
216 N. Emerson St. (Upper Room/Chelan Library)  
Office location: 105 N. Emerson St., Suite 204  
[www.LscChelan.org](http://www.LscChelan.org) (509) 682-5953

**• CHELAN**

**ST. ANDREW'S EPISCOPAL CHURCH**  
Worship 10 am  
via: <https://us02web.zoom.us/j/84574811302>  
120 E. Woodin Ave., PO Box 1226, Chelan, WA 98816  
509-682-2851 • [www.standrews-chelan.org](http://www.standrews-chelan.org)

**• MANSON**

**MANSON UNITED METHODIST CHURCH**  
10:00 am Worship,  
Holy Communion the first Sunday of the month  
"Come as you are, all are welcome"  
687-3311, at the corner of Green and Boetzkas  
Sermon-by-Phone 509-423-7514 to hear  
our own Pastor Mike O'Neal deliver his weekly sermon

**• BREWSTER**

**HOPE LUTHERAN CHURCH - LCMS**  
Sunday Worship 11 am  
Holy Communion 1st, 3rd, & 5th Sunday  
Bible Study & Sunday School 10 am  
509-689-3106 • 1520 Sunset Drive

*"With men this is impossible; but with God all things are possible." -Matthew 19:26*

TO PLACE YOUR CHURCH IN THIS GUIDE: RUTH 509-682-2213 • [ruthk@lakechelanmirror.com](mailto:ruthk@lakechelanmirror.com)



**CHELAN HIGH SCHOOL SPORTS RECAPS**

**Chelan Wrestling Recap Freeman Tournament**

BY COACH ZACH LINTON, CHELAN HIGH SCHOOL WRESTLING

**FREEMAN** - Chelan wrestling traveled to the East side of the state to wrestle in the Freeman Winter Classic. One of the toughest tournaments we go to aside from regionals and state. Freeman highschool brings in some tough Washington teams as well as some tough Idaho teams.

Sebastian Cisneros: 2-2 4th place

Zimri Kelling: 2-2 4th place  
Tiernan Davis: 3-1 Consolation Champion

This was a tough tournament and good for us to see competition that we will see at regionals. There have been massive improvements and we are close to turning the corner.

"We got a lot better over break. Our Freshman are really soaking up all the technique and it is showing on the mat with two Freshman placers this weekend. We just need to keep our heads down and the grind going as we move into the second half of this season"

Chelan wrestled home duals on Thursday, January 5.

**Chelan 60, Quincy 46**

BY COACH NICK LONGMIRE, CHELAN HIGH SCHOOL GIRLS BASKETBALL

**Jan. 3**

**QUINCY** - Tuesday night the Chelan Mountain Goats began their second round of league play starting off with the Quincy Jackrabbits. In early December the Goats had lots of overtime game to Quincy and were looking to

get revenge against a scrappy Quincy team.

The game started out with the Jackrabbits taking an early lead. However the Goats started having shots fall and were able to tie it up at 8 before hitting a 3 point shot just before the end of the 1st quarter.

In the 2nd quarter the Goats started pulling away from Quincy and were helped by a pair of 3's from Senior Guard, Joslynn Simmons in her first game back since spraining her ankle and missing six games. The Goats led 27-19 at the end of the first half.

In the third quarter the Goats were out scored 12-8 bringing the Goat lead to 4 points going into the final quarter.

The Goats had their biggest quarter of the season putting up 25 points in the fourth quarter giving the Goats a victory with a final score of 60-46.

Coach for the Mountain Goats, Nick Longmire expressed how, "The lightbulbs have been going off for our team the last couple weeks. The work we have been putting in is finally starting to pay off. We definitely have our work cut out for us and still have a lot of season ahead of us. The challenge to our team is to keep getting better."

All scores were led by senior, Juliana Perez with 19 points followed by Arabelle Finch with 13 points. Brynn Hughbanks scored 11 and Joslynn Simmons contributed nine. Kira Saendoval had six for the Goats and Jailyn Reinhart added one.

The Goats had a bye week before facing the Cashmere Bulldogs on Monday, Jan. 9 night for a neutral site matchup at the Town Toyota Center.

**Chelan 62, Liberty Bell 16**

**Dec. 31**  
**LIBERTY BELL** - The Moun-

tain Goats of Chelan traveled to Winthrop to face the Mountain Lions of Liberty Bell on the final day of 2022.

The Mountain Goats are coming off of their first win of the season that they were able to capture on Wednesday night against the Kittitas Coyotes.

"Kittitas was a good tournament for us to regroup and raise the bar as a team. The players responded well to the challenge and have a desire to get better. There are some fundamental things that we have to get better at if we are going to turn things around and the players are up for it," stated Coach Nick Longmire.

The Goats came out hungry after a good practice on Friday night and got right to business against the Mountain Lions. The Goats put the pressure on Liberty Bell defensively right off the bat only allowing 2 points to be scored in the 1st quarter while putting up 24 of their own.

The Goat pressure continued into the 2nd quarter allowing yet another 2 points to Liberty Bell. The Goats added 17 more to their score as the Goats took to the locker room at halftime with a commanding lead of 41-4.

In the second half the Mountain Lions came out with a plan to full court press which at first gave the Goats some trouble. Liberty Bell took advantage of some forced turnovers and scored eight points in the third quarter while the Goats scored 12.

In the final quarter the Mountain Lions scored four more and the Goats added nine. The final score of the game came to 62 for the Goats and 16 for the Mountain Lions.

All scores were led and shared by seniors, Juliana Perez and Kira Saendoval each with 17 points. Arabelle Finch finished with 14 points. Brynn Hughbanks had eight where Marley Williams and

Jailyn Reinhart each had three.

**Chelan 81, Quincy 83**

BY COACH ANTHONY CALLERO, CHELAN HIGH SCHOOL BOYS BASKETBALL

**January 3**

**QUINCY** - On January 3, the Chelan varsity boys basketball team lost to Caribou Trail League opponent on the road at Quincy 83-81.

Chelan built a small lead during the first quarter as junior Dylan Jay scored 12 points to help the Goats build an 18-14 lead. In the second quarter, it was senior Braiden Boyd's turn to score as he chipped in nine points for Chelan. Quincy got 13 points from freshman Pierce Bierlink who hit all six of his free throws and chipped in 13 for the quarter. The Goats went in for half up 38-37.

Quincy built a small lead during the third quarter and took a 60-56 advantage heading into the fourth. Quincy built up its lead to 10 with just three minutes to go, but after a technical foul on Quincy's head coach Scott Bierlink, Chelan was able to cut the lead to five and in the final minute they got five points from Jay to get within 2 but Quincy was able to stall out the final few seconds of the game to the secure the win.

The loss drops Chelan to 3-2 in CTL play and Quincy moves to 4-1.

Earlier in the season, Chelan gave Quincy their only CTL loss back on December 6 by beating Quincy 69-63. The teams will meet a third time on January 19 in Chelan.

Chelan was led by Dylan Jay who scored 40 points. Jay made 11-24 shots from the field and 12 of 16 free throws. He hit six three pointers. Braiden Boyd scored 23 points and led

the team with 14 rebounds. Quincy had a balanced scoring attack as three players scored over 20: Pierce Bierlink 26, Aiden Bews 23 and Julian Ibarra 21.

Coach Callero felt the team was focussed and gave a solid effort. "Any time you score in the 80's, you give yourself a pretty good chance of winning but we have to learn to pressure the ball without fouling to keep shooters off the line. Bierlink got 12 points from the free throw line. We also need to limit Bews. He made nine shots from the field."

Chelan played at home on Friday, January 6 vs CTL foe Cascade. There were no girls' games on Friday.

It was one of those nights for Chelan where shots weren't falling and everything was going in for the opponents.

**Chelan 48, Liberty Bell 71**

**Dec. 31**

**LIBERTY BELL** - The non-league game was played at

2:30 p.m. on Saturday, December 31.

Liberty Bell hit nine three-pointers for the game and the ice cold Goats scored just 7 first quarter points and trailed 19-7 after the first quarter.

The Goats woke up during the second and third quarters but were still outscored 29-31 during those quarters.

Down 14 heading into the fourth quarter, the Goats tried to full court press and double team to make up the deficit but the Mountain Lions handled the ball well and Remi Paz hit three three-pointers during the fourth to finish with 20 points.

Chelan had just one scorer in double figures. Dylan Jay led the way with 31 points.

Coach Callero said he has seen games like this before where offensive struggles can impact a teams' defensive intensity. "We struggled to put the ball in the hoop and that took a little energy away from our defense. We won't let that happen again. We will be excited to get back on the court on Tuesday."

### Donate Your Vehicle

Call (844) 889-8170 to donate your car, truck, boat, RV, and more today!



**1. Contact Us**  
Call (844) 889-8170



**2. Schedule Pickup**  
We'll pick up your vehicle for FREE - at a time and place convenient for you.



**3. Receive Top Tax Deduction**  
You may qualify for a tax deduction.



- Support Veteran Nonprofits.
- Free Pickup & Towing.
- Top Tax Deduction.

**Donate Your Vehicle Today**  
**844-889-8170**

While we appreciate every donation, in some cases, we find that we are unable to accept certain vehicles, watercraft, and/or recreational vehicles due to the prohibitive costs of acquisition. If you have any questions, please give us a call at (844) 889-8170.

# THE ONLY THING MISSING IS YOU



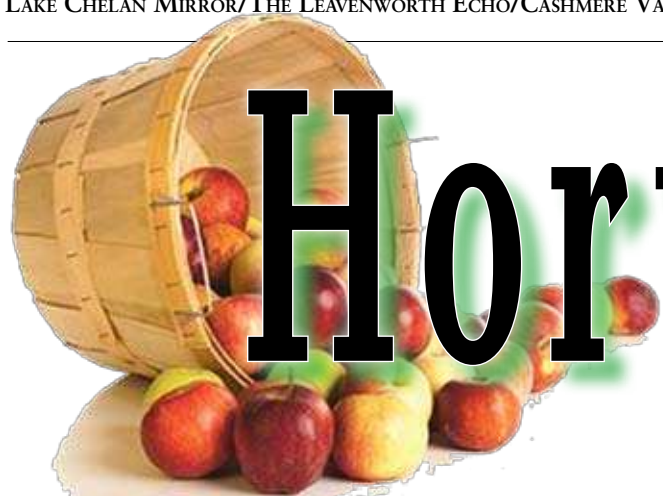
January 13-22

Purchase your festival button today!

Lake Chelan

WINTER FEST 2023





# Horticulture 2023

## North Central Washington Tree Fruit Days January 17-19 in Wenatchee, January 21 in Chelan, February 7 in Omak

SUBMITTED BY TIANNA DUPONT, WASHINGTON STATE TREE FRUIT RESEARCH AND EXTENSION CENTER

**WENATCHEE/CHELAN/OMAK** - Join us for WSU Tree Fruit Extension Programs in North Central Washington on January 17, 18, 19, 21, and February 7. Co-sponsored by Northwest Cherries, Pear Bureau Northwest, NCW Fieldmen's Association, Chelan Future Farmers of America and the Okanogan Horticultural Association. These events provide the latest research-based information on horticulture, pest and disease management.

We hope you will join us to network and learn this winter. For agendas and additional information visit <http://treefruit.wsu.edu/events>. Pesticide update credits will be awarded for program attendance 2-3 credits per session dependent on WSDA approval. No pre-registration required for in person sessions. Registration required for virtual participation in Apple, Pear and Stone Fruit

Days.

Networking lunch. Pre-registration required for lunch. Networking lunch provides an opportunity to learn and network with your peers and visiting speakers. Thank you to lunch sponsors: Apple Day: FMC; Pear Day: TBD.; Stone Fruit Day: GS Long. Visit [treefruit.wsu.edu/events](http://treefruit.wsu.edu/events) to register for lunch.

Jan. 17, NCW Apple Day at Wenatchee Convention Center (with online option)

Jan. 17, Manejo de Frutales Spanish Session at Wenatchee Convention Center

Jan. 18, NCW Stone Fruit Day at Wenatchee Convention Center (with online option)

Jan. 19, NCW Pear Day at Wenatchee Convention Center (with online option)

Jan. 21, Lake Chelan Horticultural Day Chelan High School

Feb. 7, Okanogan Horticultural Society at Okanogan County AgriPlex

Get your pesticide update credits  
North Central Washington

**Apple Day**  
Tuesday, January 17, 9 a.m. to 3 p.m. (check-in 8:30 a.m.)  
Wenatchee Convention Center/ Virtual

Co-Sponsored by WSU Extension and NCW Fieldmen's Association

Topics include: Session 1: Pest and Disease Management: Codling Moth Survey; Apple IPM Reminders; Conserving Natural Enemies; Fire Blight. Session 2: Mitigating Climate Impacts: Water Supply Vulnerabilities; Irrigation Panel; Netting for Hail and Sunburn. Session 3: Rootstocks: Role of Rootstocks in Plant Nutrition; Rootstocks for Replant Tolerance

Agenda at <http://treefruit.wsu.edu/event/apple-day-2023/>

**Manejo de Frutales**  
Tuesday, January 17, 1 p.m. to 4 p.m.  
Wenatchee Convention Center

Co-Sponsored by WSU Extension and NCW Fieldmen's Association  
Topics include: Fuego Bac-

teriano / Fire Blight; Exploración efectiva/ Scouting; Diagnóstico de problemas en los árboles/ Diagnosing Tree Problems; Manejo de chicharritas / Leafhopper management

Agenda at <http://treefruit.wsu.edu/event/manejo-de-frutales/>

**North Central Washington Stone Fruit Day**

Wednesday, January 18, 9 a.m. to 3 p.m. (check-in 8:30 a.m.)

Wenatchee Convention Center/ Virtual

Co-Sponsored by WSU Extension and NW Cherries

Topics include: Spotted Wing Drosophila & Western Cherry Fruit Fly; Powdery Mildew and Shot Hole: X-disease Vector Management; Pre-emergent Herbicides; Season Effects on Bud Formation, Fruit Set; Blue Orchard Bees; Climate Impacts on Pollination

Agenda at <http://treefruit.wsu.edu/event/stone-fruit-day-2023/>

North Central Washington

**Pear Day**  
Thursday, January 19, 9 a.m. to 3 p.m. (check-in 8:30 a.m.)

Wenatchee Convention Center

Co-sponsored by WSU Extension and Pear Bureau Northwest

Topics include: Session 1: Pest and Disease Management: Post Harvest Pathogen Prevention; Natural Enemy Releases; Pear Psylla Management. Session 2: Production, Quality and Profits: High Density Pears Virtual Tour; Impacts of Hot Weather on Storage; Optimizing Fruit Set.

Agenda at <http://treefruit.wsu.edu/event/pear-day-2023/>

**Lake Chelan Horticultural Day**

Saturday, January 21, 9 a.m. to 3 p.m. (check-in 8:30 a.m.)

Chelan High School  
Co-sponsored by WSU Extension and Chelan Future Farmers of America

Topics include: Replant Considerations, Reduce your

Bi-annual Bearing, 2022 Pest Management; New Technology Evaluation

Agenda at <http://treefruit.wsu.edu/event/chelan-fruit-day/>

**Okanogan Horticultural Society Meeting**

Tuesday, February 7, 9 a.m. to 3 p.m. (check-in 8:30 a.m.)

Agriplex, Omak  
Co-Sponsored by Okanogan Horticultural Society

Topics include: Apple maggot, Invasive insects, Spotted wing drosophila, Pear psylla, Labor law changes, Optimizing labor

Agenda at <http://treefruit.wsu.edu/event/okanogan-horticultural-meeting/>

For more information visit [treefruit.wsu.edu/events](http://treefruit.wsu.edu/events) or contact Tianna DuPont [tianna.dupont@wsu.edu](mailto:tianna.dupont@wsu.edu), 509-293-8758

Extension programs and employment are available without discrimination. Evidence of noncompliance may be reported through your local extension office.

## Fire Blight workshops, webinars scheduled for February, March, June, October

SUBMITTED BY AINA BARO, WASHINGTON STATE TREE FRUIT RESEARCH, EXTENSION CENTER

ONLINE - Join us for the latest fire blight information from a national research project involving Michigan, North Carolina, New York, California, Oregon and Washington funded by the Specialty Crop Research Initiative.

Fire Blight Webinar Series  
Biopesticides for Fire Blight Management

March 15, at 4 p.m. (PST) / 7

p.m. (EST)

Ken Johnson, Oregon State University. Effective use of biopesticides for Fire Blight control.

**Fire Blight Pruning and Sanitation**

June 13, at 4 p.m. (PST) / 7 p.m. (EST)

Tianna DuPont, Washington State University. New trials on pruning and sanitation for Fire Blight management.

**Using Weather and Environmental Conditions to Optimize Biologicals and Biopesticides for Bloom Protection**

October 18, at 4 p.m. (PST) / 7 p.m. (EST)

Sara Villani, North Carolina

State University. Join us to talk about how to use weather and environmental data to optimize timings of biologicals and biopesticide applications for an effective Fire Blight control.

For more information and registration [https://events.anr.msu.edu/Fireblight\\_SCRI\\_Webinar\\_Series/](https://events.anr.msu.edu/Fireblight_SCRI_Webinar_Series/) or contact Nikki Rothwell [rothwel3@msu.edu](mailto:rothwel3@msu.edu) or 231-946-1510. One pesticide update credit per session with agency approval.

**Fire Blight Fruit School:**  
New research from our National Team

February 23, at 9 a.m. - 3 p.m. (PST)

Wenatchee and Online

SEE FIRE BLIGHT ON PAGE B2

**Helping Hands Growing Food**  
We Support Our Farming Community!

Thorogood Boots  
Barnel Pruners & Loppers  
Carhartt All-Weather Workwear

**ACE Hardware**

Kelly's ACE Hardware | 509-682-2815 | [www.kellyshardware.com](http://www.kellyshardware.com)  
Quality hardware and expert advice since 1925

WESTERB984CF

BUILDING SINCE 1976

**WESTERN RANCH BUILDINGS**  
STEEL & POST FRAME BUILDING CONTRACTORS

NFBA

Your building can be customized just the way you want!

Sold and erected by an independent, locally owned builder.

NEW LOCATION  
1107 Walla Walla Avenue  
Wenatchee, WA 98801

509-884-0555  
[www.westernbuildings.com](http://www.westernbuildings.com)

RESIDENTIAL • COMMERCIAL • INDUSTRIAL • AGRICULTURAL

**NORTHWEST**  
wholesale incorporated®

**FULL SERVICE SUPPLIER IN THE TREE FRUIT INDUSTRY AND MORE SINCE 1937**

- Production and Horticultural Services
- Post Harvest Supplies and Services
- Orchard Supplies

**8 convenient warehouse locations in North Central Washington**

Brewster - 509-689-3560  
Cashmere - 509-782-3363  
Chelan - 509-682-5821  
Omak/Okanogan - 509-422-4441  
Oroville - 509-476-2411  
Tonasket - 509-486-2234  
Royal City - 509-346-1265  
Wenatchee - 509-662-3563

**Northwest Wholesale Headquarters**  
5416 Enterprise Drive  
East Wenatchee, WA 98802  
Office: (509) 662-2141  
[nwwinc.com](http://nwwinc.com)

**Agricultural Management & Consulting Services**

**AgriMACS**  
Growing and Protecting Your Investment

Tim McLaughlin | Tom Gausman | 509-888-5066 | [www.agrimacs.com](http://www.agrimacs.com)

THE POWER OF WE

**WE grows here.**

Brewster  
689-3113  
409 N 7th Street

Chelan  
682-5315  
1680 Wilmore Drive

Visit to Learn more



**FIRE BLIGHT**

CONTINUED FROM PAGE B1

March 1, at 9 a.m. - 3 p.m. (EST)  
 Traverse City, Michigan and Online  
 Topics:  
 Introduction to the Pathogen  
 Bloom Infection Prevention with Antibiotics: The Basics  
 Antibiotic Resistance  
 Biopesticide Efficacy  
 Using Prohexodine Calcium and Actigard for Shoot Blight Management  
 Managing Fire Blight Infections: Pruning, Sanitation  
 Using Systemic Acquired Resistance Products Therapeutics During Removal  
 Credits (with agency approval)



Courtesy Tianna DuPont

**Fire blight in gala seventh leaf.**

February 23, (WA): Three pesticide update credits WA, OR, CA.  
 March 1, 2023 (MI): Three pesticide update credits MI, NY

More Information and Registration  
 February 23, (WA): <http://treefruit.wsu.edu/event/fire-blight-workshop/>  
 March 1, (MI): [https://events.anr.msu.edu/Fireblight\\_SCRI/](https://events.anr.msu.edu/Fireblight_SCRI/)  
 Contacts  
 Nikki Rothwell rothwel3@msu.edu or (231) 946-1510  
 Tianna DuPont tianna.dupont@wsu.edu (509) 293-8758

**WSU Viticulture Extension news, seminars**

SUBMITTED BY MICHELLE M. MOYER, PH.D., VITICULTURE EXTENSION SPECIALIST

**Workshop: Stop the Spread: Effective Options for Managing Leafroll**

Join us for this interactive workshop, discussion grapevine leafroll and grapevine mealybug management. In this workshop, Dr. Monica Cooper of UCCE-Napa County will highlight historic and recent research on the importance of roguing in managing the regional spread of grapevine leafroll disease, as well as better approaches for vector management. Dr. Naidu Rayapati will discuss advancements in leafroll testing and monitoring.  
 When: January 24, Walla Walla and January 25, 2023 Prosser  
 Time: 9 a.m. - 12 p.m.  
 Cost: Free, but pre-registration is required.



Courtesy Michelle M. Moyer

This workshop has been approved for three ODA and three WSDA Pesticide Recertification credits.

More information, including registration can be found at: <https://wine.wsu.edu/event/managing-leafroll-2023/>

This event is co-presented by WSU Viticulture Extension and the Washington Wine Industry Foundation, with funding provided by the WSDA-Specialty Crop Block Grant #K3950 titled "Stop the Spread: Building Pest Management Plans to Comply with Grape Quarantine Rules."

Events Calendar  
 See the WSU Viticulture

and Enology calendar for more upcoming events: <https://wine.wsu.edu/events/>

January 24-26: Unified Wine and Grape Symposium, Sacramento, California

January 24-25: Workshop Series: Effective Options for Managing Leafroll, Walla Walla - January 24, and Prosser, - January 25

February 6-9: WineVit 2023, Kennewick

February 14-15: Oregon Wine Symposium, Portland, Oregon

February 22-23: Washington Wine Research Advisory Committee Research Review, Prosser

February 27-28: Idaho Wine Commission Annual Meeting, Nampa, Idaho

**Cold Hardiness Monitoring - Back again for 2022-2023**

WSU Viticulture will continue with grape cold hardiness monitoring for the 2022-2023 winter season. Observed cold hardiness data for the Prosser, area is updated approximately every 7-14 days at: <https://wine.wsu.edu/extension/weather/cold-hardiness/>

This webpage also has several resources on preventing cold damage and how to respond after cold damage has occurred.

Given cold hardiness monitoring cannot be done on a large scale, a cold hardiness model is available on AgWeatherNet. You do need a (free) registered AgWeatherNet Account to see the model: <http://weather.wsu.edu/>

When low temperatures are forecasted use the model on AgWeatherNet to help prioritize which locations, and varieties, you should start with for follow-up scouting.

The resources available on the WSU Grapevine Cold Hardiness Monitoring page above can be used to help you develop a bud collection and assessment plan. They also provide worksheets to develop pruning strategies to compensate for potential crop loss, should cold damage occur.

**Join American Society for Enology and Viticulture**

The American Society for Enology and Viticulture (ASEV) is a national community of wine and grape professionals, with a focus on using and sharing science-based information to for better grape growing and winemaking. Membership is open to professionals and students alike - with student members having access to scholarships to assist them with educational expenses! Membership comes with opportunities for networking and professional growth, along with benefits such as reduced registration fees for the Unified Wine and Grape Symposium, and the ASEV National Conference.

For more information, please visit: <https://www.asev.org/asev-membership>

**Coverage for all the things you care for**



Business • Auto/Equipment • Home Disability Income Protection Health Insurance • Life



Give me a call  
**509-888-9038**



Kelly@KellyAllenAgency.com  
[www.KellyAllenAgency.com](http://www.KellyAllenAgency.com)



102 E. JOHNSON AVE • CHELAN



**We have qualified buyers for your**

- Orchard • Vineyard
- Recreation Property

We are locally owned and have served Eastern Washington for over 50 years

Call our Brokers for FREE Market Update!!

Office 509.663.3333

Kevin 509.669.0407 • Bo 509.389.1223

Dennis 509.669.4500

Member NW Multiple Listing Service



**Kubota**

**Kubota M Narrow Series tractors are engineered for high performance in narrow applications.**



M4N-071

M5N-111

Take on vineyard and orchard work with three powerful horsepower options, versatile 12 or 24 speed transmissions, hydraulic shuttle, Bi-Speed turning, wet disc brakes and more! Open station and cab models available!

Horsepower Options

M4N-071: 72.6 HP\*, 61.0 PTO HP\*\*

M5N-091: 95 Rated HP\*, 78.0 PTO HP\*\*

M5N-111: 108 Rated HP\*, 91.0 PTO HP\*\*

**The Kubota is a proven Orchard Tractor leader in reliability and lower operating costs.**



M5N-111



**Valley Tractor and Rentals**

4857 Contractors Dr. • East Wenatchee  
 (509) 886-1566 • (800) 461-5539

[www.valleytractor.com](http://www.valleytractor.com)



Farmers Flying for Farmers

Call us for all your **Aerial Applications** in all of North Central Washington

- + CHERRY DRYING
- + ULV
  - Fruit Fly & Mosquito Applications
- + SPRAY
  - Row Crops
  - Tree Fruit

- + POLLEN
  - Improve Set
  - Improve Seed
  - Set Fruit Size



- + DRY BUCKET + SPECIAL PROJECTS
  - Baits
  - Fertilizer
  - Seed
  - Precision Herbicide Application
  - External Load Lifts

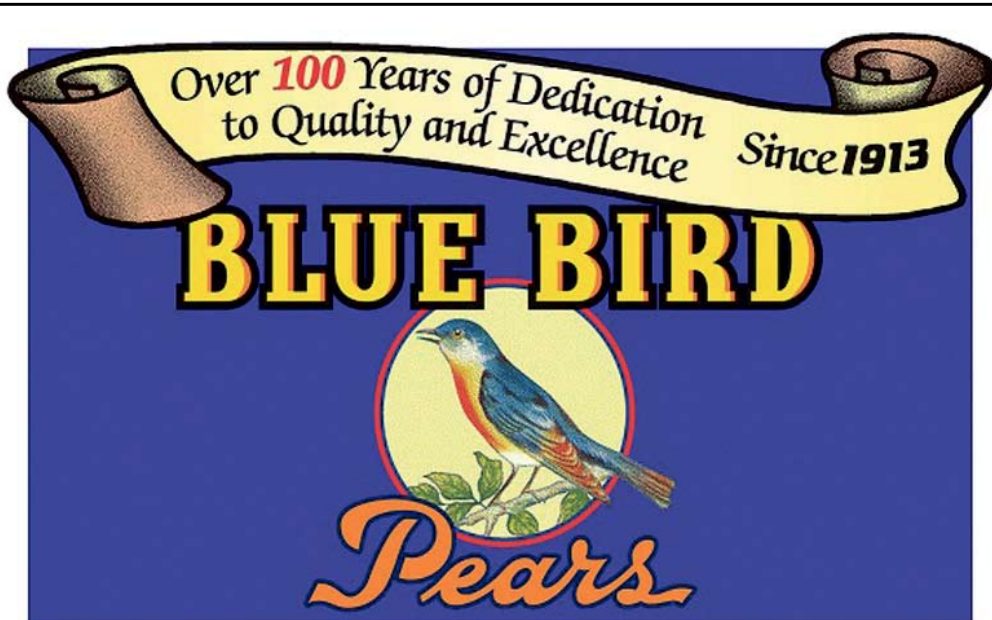
**Kari Barber - 253.439.0208**

[Kari@northwindhelicopters.com](mailto:Kari@northwindhelicopters.com)

**Dan Winship - 509.387.0505**

[Dan@northwindhelicopters.com](mailto:Dan@northwindhelicopters.com)

[www.NorthWindHelicopter.com](http://www.NorthWindHelicopter.com)



**Traditional Facility**

Peshastin 509-548-1700

**Dedicated Organic Facility**

Wenatchee 509-662-5191





Place your ad online at [NCWMARKET.COM](http://NCWMARKET.COM) or call 509-548-5286 - Leavenworth Echo/Cashmere Valley Record 509-682-2213 - Lake Chelan Mirror • 509-689-2507 - Quad City Herald

# CLASSIFIEDS

### PUBLISHER'S NOTICE

All real estate advertising in this newspaper is subject to the Fair Housing Act, which makes it illegal to advertise "any preference, limitation or discrimination based on race, color, religion, sex, handicap, familial status or national origin, or an intention to make any such preference, limitation or discrimination." This newspaper will not knowingly accept any advertising for real estate that is in violation of the law. To complain of discrimination call HUD at 1-800-669-9777. The number for hearing impaired is 1-800-927-9275.



**CORRECTIONS:** NCW Media Inc. shall be responsible for corrections to advertisements on the first publication only. The advertiser will be responsible for corrections made thereafter. NCW Media Inc. shall not be responsible for slight changes or typographical errors that do not lessen the value of the advertisement. NCW Media Inc.'s liability for other errors or omissions in connection with an advertisement is strictly limited to the publication of the advertisement in any subsequent issue. No monetary refunds will be given. For more information call (509) 548-5286.



### Administrative

### Puzzle Solution

N	A	D	I	R	A	B	A	T	O	M	E		
A	S	I	D	E	F	A	D	M	O	P	E	Y	
R	E	G	A	L	A	G	O	R	A	T	E		
C	A	S	H	I	E	R	B	U	T	C	H	E	R
O	E	R	Y	E	T	I							
D	A	B	D	A	D	A	E	L	A	T	E		
O	P	E	C	T	E	R	N	E	D	E	M	A	
L	I	A	R	O	L	D	I	E	D	E	M	I	
C	A	R	O	B	I	M	P	S	S	U	E	R	
E	N	D	C	A	P	A	S	T	I	P	R	Y	
L	I	O	N	O	D	E							
F	R	E	E	Z	E	R	S	P	E	C	I	A	L
A	O	R	T	A	B	O	A	A	L	O	N	E	
I	L	I	A	C	I	N	K	L	A	T	T	E	
L	E	N	S		T	E	E	S	T	A	I	R	

6	3	4	1	9	2	5	8	7
7	2	8	3	4	5	9	6	1
5	9	1	7	8	6	2	3	4
4	5	3	2	7	1	8	9	6
2	7	6	8	3	9	1	4	5
1	8	9	5	6	4	7	2	3
9	6	2	4	1	7	3	5	8
8	4	7	9	5	3	6	1	2
3	1	5	6	2	8	4	7	9

### Announcements

### Lost & Found

**LOST & FOUND ITEMS** can be placed in our **Local Newspapers** and **Online at NCWMARKET.COM** for **ONE week for FREE.** Limit 30 words. A small fee will be charged for over 30 words and pictures or other extras.

**Leavenworth/Cashmere** 509-548-5286 or email [classifieds@leavenworthecho.com](mailto:classifieds@leavenworthecho.com) or **Lake Chelan Mirror** 509-682-2213 or **Quad City Herald** 509-689-2507 or email [mirrorads@lakechelanmirror.com](mailto:mirrorads@lakechelanmirror.com)

**Deadline Noon on Friday for the next week's papers**

### Happy Ads

Do you have a **SPECIAL EVENT COMING UP?** **HAPPY BIRTHDAY CONGRATULATIONS!** **WILL YOU MARRY ME?** **HAPPY ANNIVERSARY**

Add unlimited text and pictures, video for your online ad at [www.NCWMarket.com](http://www.NCWMarket.com)

Print ads are limited to 30 words, over 30 words, or extra enhancements like bold words or border will be a minimal extra charge.

Ads will be placed in the following Wednesday edition of the papers. It is easy just

Register and pay on our secure site 24/7 Or call 509-682-2213 to place ad or have questions.

**The Lake Chelan or Quad City Herald** or email [mirrorads@lakechelanmirror.com](mailto:mirrorads@lakechelanmirror.com)

For **The Leavenworth Echo or Cashmere Valley Record**

Call 509-548-5286 or email [classifieds@leavenworthecho.com](mailto:classifieds@leavenworthecho.com)

### General Interest

### Trouble hearing your TV?

Try TV EARS' Voice Clarifying Wireless TV Speaker. Better than a soundbar and/or turning the TV volume way up. Special, limited time \$50 off offer. Call TV Ears. Use code MBSP50. Call 1-844-541-3425

### REVERSE MORTGAGE A Better Way to Live

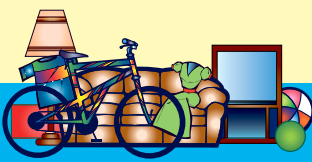


Let's Talk **Carlos Mata** NMLS #70770 *Reverse Mortgage Specialist* 509.662.5495 [cmata@mutualmortgage.com](mailto:cmata@mutualmortgage.com) 710 N. Miller St. Wenatchee, WA 98801

Mutual of Omaha Mortgage, Inc., NMLS ID 1025894. WA Consumer Loan Company License CL 1025894. These materials are not from, or approved by HUD or FHA. [www.nmlsconsumeraccess.org](http://www.nmlsconsumeraccess.org) Subject to credit approval. #96720273A © Equal Housing Lender

### Sell your unused items with a Classified ad

- Place your ad 24/7 at [ncwmarket.com](http://ncwmarket.com)
- Email: [mirrorads@lakechelanmirror.com](mailto:mirrorads@lakechelanmirror.com)
- Call 682-2213



### Employment

### Help Wanted

### Permit Technician

The City of Leavenworth is seeking an energetic self-motivated individual for a full-time position as Permit Technician for Community Development Department. The ideal candidate will have demonstrated excellent organization skills through filing or similar job activities, and have good communication (written and verbal) skills. This position performs a variety of technical and administrative tasks to expedite the processing and issuance of complex and routine permits for multiple departments. Incumbents accept, review, route, and issue permit applications for routine projects as well as large commercial projects. Incumbents utilize the permit tracking database, review applications for accuracy and completeness, determine permit fees, route plans for approval, and monitor and coordinate the processing and issuing of permits. Duties include responding to inquiries about the permit application process, applicable codes, and inspection requirements. This position is a union position with a salary range of \$4,831-\$5,440/month (based on step increases over time); excellent benefits and retirement package included. The full job description and application are available on the City website at [www.cityofleavenworth.com/employment](http://www.cityofleavenworth.com/employment) or by contacting the City of Leavenworth at (509)548-5275 or 700 US Highway 2, Leavenworth, WA 98826. First review of applications will be on January 15, 2023. Position will remain open until filled. The City of Leavenworth is an equal opportunity employer.

### Looking for a great local employee?

It is easy to place your ad online 24/7 at [www.NCWMarket.com](http://www.NCWMarket.com) Register and pay on our secure site. **Want Print Only** for The Lake Chelan Mirror Quad City Herald Brewster Call 509-682-2213 or email [mirrorads@lakechelanmirror.com](mailto:mirrorads@lakechelanmirror.com) OR Leavenworth Echo Cashmere Record 509-548-5286 or send email to [classifieds@leavenworthecho.com](mailto:classifieds@leavenworthecho.com)

Deadline is Friday by Noon for the following Wednesday issues of all newspapers

WWW.

[lakechelanmirror.com](http://lakechelanmirror.com)

### Help Wanted

**CITY OF CASHMERE Public Works Maintenance Worker**  
**Job Type:** Full-Time / Non-exempt/ Union Representation  
**Pay:** Depends on qualifications and experience, minimum starting hourly rate is \$20.78  
**Benefits:** Health, vision, & dental for employee and family, PERS retirement, sick and vacation leave  
**QUALIFICATIONS**  
• High school diploma or GED; with additional education and experience necessary for successful performance of this job  
• Valid Washington state driver's license  
• Must obtain commercial driver's license within 6 months from date of hire  
Applications are available at: <https://www.cityofcashmere.org/government/human-resources>  
Applications are due by January 25, 2023.  
For inquires contact Steve Croci at [steve@cityofcashmere.org](mailto:steve@cityofcashmere.org) or 509-782-3513.

### For Sale

### Antiques & Collectibles

**Get cold hard CASH for your Antiques and Collectibles by placing them in our classifieds.** Place your ad with pictures online 24/7 at [www.NCWMarket.com](http://www.NCWMarket.com) Register and pay on our secure site. **Want Print Only?** Call **Lake Chelan Mirror Quad City Herald** 509-682-2213 or email [mirrorads@lakechelanmirror.com](mailto:mirrorads@lakechelanmirror.com) or call **The Leavenworth Echo Cashmere Valley Record** 509-548-5286 [classifieds@leavenworthecho.com](mailto:classifieds@leavenworthecho.com) **Deadline: Noon on Friday for all papers.**

### Real Estate

### Rentals

3 1/2 miles out of town, large bedroom with private bath (with a Jacuzzi tub and separate shower), shared kitchenette, off street parking space, streaming media TV included. Washer, dryer & dishwasher. Utilities included in rent. Lease for \$800.00 per month. Contact Duane 509-423-0554 or email [duane@yfn.net](mailto:duane@yfn.net)

### Vehicles

### Trucks & Vans

**FOR SALE**  
Leavenworth Original owner  
White, 2008 GMC TRUCK  
  
1/2 ton, 4 x 4- V-8 extended cab and a canopy, new battery. New transmission in 2019 Very clean, 143,964 miles, lots of extras. New price \$16,500 OBO  
Call to make appt. to see Carol 509-670-1723. See photo on [NCWMARKET.COM](http://NCWMARKET.COM)

### Legals

### Public Notices

**NOTICE TO CONTRACTORS LAKE CHELAN RECLAMATION DISTRICT**  
**2023 SMALL WORKS ROSTER**  
Pursuant to RCW 87.03.436, the Lake Chelan Reclamation District (District) is accepting applications from contractors for its 2023 Small Works Roster. Applications will be accepted continuously until December 2023. Project cost will be \$300,000 or less. In order to qualify, applicants must be: 1) a registered contractor in good standing in the State of Washington with a WA State UBI number and Contractor's License number; 2) be able to comply with Federal and State prevailing wage requirements as they apply to each project; 3) be able to provide bid bonds, payment bonds, performance bonds, and an endorsed certificate of insurance naming the District as additional insured when called for; 4) complete and submit a Small Works Roster Application. Applications, specifications, and information on work available and selection process may be obtained from the District's website at [www.lcrd.org](http://www.lcrd.org). Questions concerning applications may be directed to Jennifer Collins by email at [jcollins@lcrd.org](mailto:jcollins@lcrd.org). Published in the Lake Chelan Mirror January 11, 18, 25, 2023. #5127

### Public Notices

**IN THE SUPERIOR COURT OF WASHINGTON COUNTY OF CHELAN Estate of JUDY E. SAPPENFIELD, Deceased. NO. 22-4-00592-04 PROBATE NOTICE TO CREDITORS RCW 11.40.030**

The personal representative named below has been appointed as personal representative of this estate. Any person having a claim against the decedent must, before the time the claim would be barred by any otherwise applicable statute of limitations, present the claim in the manner as provided in RCW 11.40.070 by serving on or mailing to the personal representative or the personal representative's attorney at the address stated below a copy of the claim and filing the original of the claim with the court.

The claim must be presented within the later of: (1) Thirty days after the personal representative served or mailed the notice to the creditor as provided under RCW 11.40.020(3); or (2) four months after the date of first publication of the notice. If the claim is not presented within this time frame, the claim is forever barred, except as otherwise provided in RCW 11.40.051 and 11.40.060. This bar is effective as to claims against both the decedent's probate and nonprobate assets. DATE OF FIRST PUBLICATION: January 11, 2023

**PERSONAL REPRESENTATIVES:** James Sappenfield ATTORNEY FOR PERSONAL REPRESENTATIVE: Jeffrey T. Fehr ADDRESS FOR MAILING OR SERVICE: Fehr Law Office, PLLC P.O. Box 1606 Chelan, WA 98816 509-682-4536 Court of probate proceedings and cause no.: Superior Court of Washington in and for Chelan County, Cause No. 22-4-00592-04 Published in the Lake Chelan Mirror January 11, 18, 25, 2023, #5126

## AMBUSH AUTOMOTIVE BUYERS

Our site is promoted across North Central Washington giving you exposure to your primary potential local buyers. Your listing will continue to run for 12 months or until you cancel it



Don't just 'park' your car on the side of the road with a 'For Sale' sign on it! 'Park it' on

**NCWMarket.com** for one low \$25 fee!

### Fee includes:

- Up to 3 photos of your vehicle
- Video • Unlimited description
- Google Map to your location (you can opt out)
- Privacy Link (interested buyers contact you through the site protecting your identity)



# How to maximize the value and timeliness of your tax return

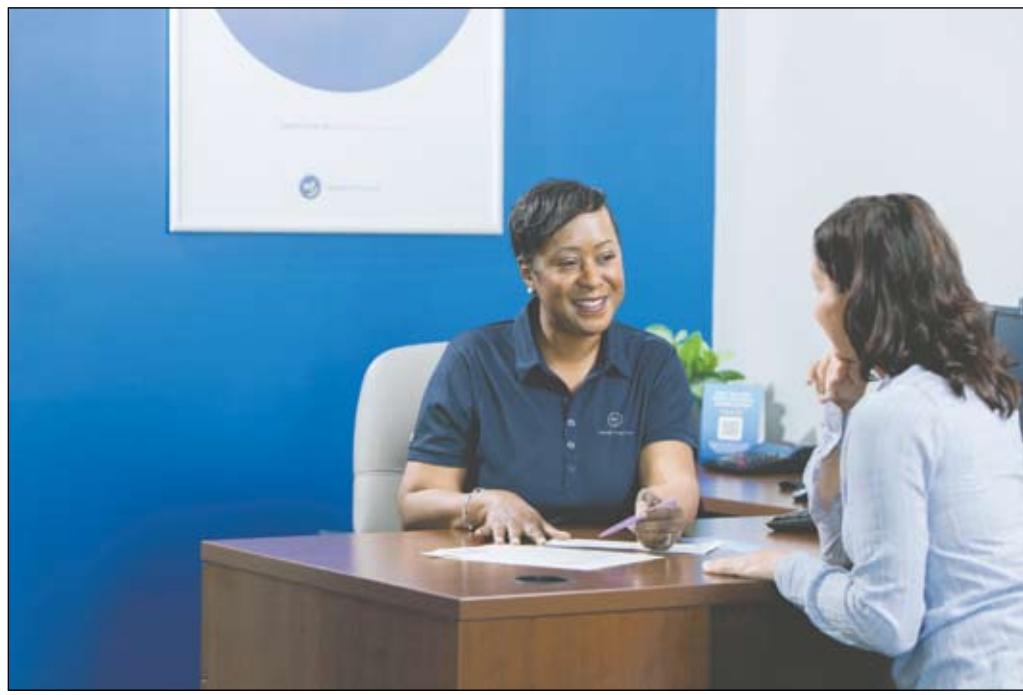
STATEPOINT - Research shows that if you're dreading tax season, you're not alone.

According to the Pew Research Center, 47% of Americans say they are bothered a lot by the complexity of the federal tax system. Other taxpayers stress over getting the details right. In a Credello survey, 22% of respondents say not maximizing their refund is their biggest fear around doing taxes, while another 22% said their biggest fear is making a mistake.

"Many Americans rely on their tax refund to make ends meet. Accessing those funds should be fast and easy," says Chad Prashad, president, and CEO of World Finance.

To help you get a handle on your taxes, World Finance is drawing on its 26 years of filing expertise to offer these timely tips:

- Get ready early. As soon as your employer provides your W2, you can file your



Courtesy StatePoint

**Tax season doesn't need to create headaches, fears, or anxieties. By gathering important tax documents in advance and understanding your filing and refund options, you can have confidence that you've maximized the value and timeliness of your tax return.**

taxes. Having all other documentation and receipts ready to go will help expedite the process, which means you will get your tax return faster, too. Collect the necessary materials in

one place before filing.

- Consider significant life changes. Did you move in 2022? Have a baby? Get married? Change jobs? Each of these monumental life events can have an impact

on your taxes, so be sure to disclose these factors when filing or to the professional filing on your behalf.

- Know what's new. Visit IRS.gov to learn about any changes to tax filings that

are applicable to you. A tax services professional can also help you identify relevant updates. World Finance tax pros have year-round training to stay on top of the latest tax filing requirements and are ready to tailor tax services to each tax customer's financial situation.

- Review and adjust. Once you know what your return is going to be this year, make any necessary adjustments to your W2 to make sure you're withholding enough during the year. If this is your first year working with a professional tax service, have them review your previous years' filings as well. You may be able to recover additional refunds if anything was missed. World Finance offers this service for no additional charge.

- Consider a tax refund loan. After filing, you can potentially take out a loan for the amount of your expected refund. This is known as a tax refund loan

and an option to consider if you need your refund as soon as possible.

- Work with a professional. Filing your taxes with a software program is a low-cost option, but only if you have time to dedicate to the task, and the know-how to get your biggest possible tax return. Working with a reliable, trusted tax preparation service can help ensure your taxes are filed correctly, and your return is as substantial as it can be. Look for a service that offers transparent pricing, flexible filing options and same-day Tax Advance Loans, such as World Finance. For more information, visit [loansbyworld.com/taxes](https://loansbyworld.com/taxes).

Tax season doesn't need to create headaches, fears, or anxieties. By gathering important tax documents in advance and understanding your filing and refund options, you can have confidence that you've maximized the value and timeliness of your tax return.

## The Washington Outdoor Report

### Planning for a fun year outdoors

By JOHN KRUSE, THE WASHINGTON OUTDOOR REPORT

2023 is sizing up to be a busy year. First off, I'm moving out to the Columbia Basin in the next few months. It's the region of the state I find myself going to more often than not when it comes to fishing for trout, bass, walleye and panfish. It's also the place I go to hunt birds whether they be doves, ducks, pheasant, quail or geese. Throw in the fact my best friend lives next to Potholes State Park and our shared bass boat is there and you can begin to understand the reason I'm moving that way.

Second, I'll be exhibiting again at two big sportsmen's shows here in the Pacific Northwest. I'll be at the Washington Sportsmen's Show at the fairgrounds in Puyallup from February 1 - 5 and at the big Pacific Northwest Sportsmen's show at the Expo in Portland from February 14 - 18. Both shows promise to be very good ones with lots of exhibitors and attendees. You can find out more about them at [www.thesportshows.com](http://www.thesportshows.com)

I'll be doing a good amount of fishing on Potholes Reservoir again this year and will also be fishing three or four bass tournaments in the hope that my fishing partner and I will finally cash a check at one of these events.

This spring I'm looking at a possible trip to the Snake River in Hells Canyon for



Courtesy The Washington Outdoor Report

John Kruse with a nice largemouth bass.

some

smallmouth bass and sturgeon fishing. The beginning of June will likely find me in the

Columbia River Gorge, fishing for American shad below the John Day Dam and casting for pikeminnow near The Dalles. I may also go on a day trip while at The Dalles to Cottonwood Canyon State Park where you can hike trails along the John Day River, see wildlife from mule deer to bighorn sheep, and catch a whole bunch of feisty smallmouth bass on light tackle.

In July I'll be heading north

to Alaska again and this time I'll be taking my best friend, Rusty Johnston for his first fishing trip in the Last Frontier. We'll be staying at Sportsman's Cove Lodge, a very well run operation in a secluded, beautiful setting on Prince of Wales Island, accessible by floatplane from Ketchikan. Once there, we'll get in 3 1/2 days of chartered fishing for halibut, salmon, lingcod and true cod. It will be my fourth time at the lodge and I am thrilled to return! If you want to find out more check out [www.alaskasbest-lodge.com](http://www.alaskasbest-lodge.com)

Late August will find me at Fort Casey State Park on the east side of Whidbey Island. Every other year a run of pink salmon come into Puget Sound, heading to several rivers to spawn. A good number of these fish can be found close to shore, close enough to cast to from the beach. Some years the fishing is good, sometimes

not so much, but spending a morning and evening casting for salmon, crabbing in the small bay next to the park campground during the day, and hiking around the old fort and lighthouse while watching the state ferry come and go makes for a great end of summer camping getaway.

I'll come back from Fort Casey State Park just in time for the opening of dove hunting season and the other bird hunting seasons will not be far behind. With any luck, I'll have a new hunting dog by

then and if I do, I'll be spending a lot of time going for long walks on the public lands of the Columbia Basin hoping to run into some birds.

Like I said, it's looking to be a busy year, but I can't wait to enjoy all of it! Here's hoping the year ahead is full of adventures outdoors for you as well.

John Kruse - [www.northwesternoutdoors.com](http://www.northwesternoutdoors.com) and [www.americaoutdoorsradio.com](http://www.americaoutdoorsradio.com)

**Place your Help Wanted and find the best qualified local employee**




- Place your ad 24/7 at [ncwmarket.com](http://ncwmarket.com)
- Email: [mirrorads@lakechelanmirror.com](mailto:mirrorads@lakechelanmirror.com)
- Call 509-682-2213

*Announce those special events with us!*

Milestones | Weddings | Births | Birthdays | Anniversaries

Call or email us for details!



Leavenworth 509-548-5286  
Cashmere 509-782-3781  
Carol@leavenworthecho.com

509-682-2213  
509-689-2507  
ruthk@lakechelanmirror.com

## CROSSWORD PUZZLE

THEME: AT THE SUPERMARKET

**CROSSWORD**

1	2	3	4	5	6	7	8	9	10	11	12
13											
16											
19											
23											
25											
35											
40											
44											
48											
53											
57											
65											
69											
72											

**ACROSS**

1. Rock bottom
9. Hefty volume
14. It's all the rage
15. Miserable
16. Fit for a king
17. Back then
18. Do like Demosthenes
19. \*Checkout clerk
21. \*Meat professional
23. "\_\_\_ the land of the free..."
24. Fictional Himalayan
25. Meme move
28. Man Ray's art movement
30. On cloud nine
35. Crude group
37. Seaside bird
39. Formerly known as dropsy
40. Make-up artist?
41. Blast from the past
43. Bruce Willis' ex
44. Chocolate substitute
46. Mischievous sprites
47. Plaintiff
48. \*Advantageous display
50. \_\_\_ Spumante
52. Meddle
53. Largest share owner
55. "\_\_\_ to Joy"
57. \*Coldest display
61. "What's on \_\_\_?"
65. Main artery in the body
66. Feathery neckwear
68. Isolated
69. Hipbone-related
70. Octopus' defense
71. Espresso plus steamed milk
72. Eye contact
73. Word from #32 Down
74. Goes up or down

**DOWN**

1. D.E.A. agent
3. Pad
4. Gem State
5. Depended on
6. From a distance
7. \*Reusable one
8. Hacienda brick
9. Cleopatra's necklace
10. Moonfish
11. Boundary line
12. Looker or ogler
15. Capable of movement
20. One of the Muses
22. Shoshonean
24. Railyard worker
25. Gabbana's partner
26. Relating to bees
27. Edward Teach's facial feature
29. \*Prepared food department
31. Contributors
32. Get ready to drive (2 words)
33. Type of wheat
34. \*Ricotta and eggs section
36. Semiaquatic tetrapod, for short
38. Sips from a flask?
42. Bar by estoppel
45. Novelist Honoré de \_\_\_
49. Blackbird dessert
51. Paragons
54. Galactic path
56. Pomp
57. Be unsuccessful
58. Dramatic part
59. Sportscaster Andrews
60. JFK or ORD postings
61. Japanese alcoholic beverage
62. Tiny amount
63. Not in favor of
64. Lecherous look
67. \*O in BOGO



**BRING EVERYTHING YOU LOVE TOGETHER!**

2-YEAR TV PRICE GUARANTEE \$69.99

1-888-416-7103

## SUDOKU PUZZLE

SUDOKU

Call today and receive a **FREE SHOWER PACKAGE PLUS \$1600 OFF**

**SAFE-STEP WALK-IN TUB** 1-855-576-5653

6		4		9				
7			3		5	9	6	
			7	8			3	
4		3			1			
			8		9			
			5			7		3
6				1	7			
4	7	9		3				2
			2		4			9

© StatePoint Media  
Fill in the blank squares in the grid, making sure that every row, column and 3-by-3 box includes all digits 1 through 9.