



Leavenworth woman and Sultan man charged with 1982 murder of Cashmere man

By IAN DUNN
EDITOR

The Chelan County Sheriff's Office shocked residents of the upper valley early this month when it was announced there had been arrests made in the 1982 murder of Stephen E. Smith of Cashmere.

Two people were arrested, 60-year old Bernard Swaim of Sultan, Washington and 57-year old Dawn M. Soles of Leavenworth. Both have been charged with first degree murder.

According to a Chelan County Sheriff's Office news release, on July 18, 1982, 30-year old Stephen Smith of Cashmere was reported missing by family members. He was last seen at his home on or about July 12, 1982.

Smith's car, a 1966 Pontiac Tempest, was found abandoned on Dead Man's Hill Road near Dryden, several days after his reported disappearance. The initial investigation stalled in 1982 with no sign of Smith.

Late in 2016, this case was assigned to detectives for further investigation. After interviewing numerous people, including Smith's family members and witnesses, detectives identified Bernard Swaim as a person of interest in Smith's disappearance.

Prior to his July, 1982 disappearance, Smith

and Soles were married. During their marriage, they had a child. The two divorced, and as part of the divorce, Smith was granted full custody of the child, with Soles getting only supervised visits.

Later, Soles married Swaim and moved to western Washington. According to the news release, on or before July 1982, Soles and Swaim traveled to Cashmere with a plan to murder Smith. The investigation concluded Swaim and Soles planned to get Smith drunk to the point of passing out. Then, they would murder him.

Using old investigative interviews and new interviews, detectives were able to create additional leads, piecing together critical evidence to establish probable cause to arrest Swaim and Soles for the murder of Smith.

Detectives are still conducting follow-up interviews, trying to gather more information related to the disappearance of Smith and locating his remains.

If you have any information regarding the disappearance of Stephen E. Smith please call the Chelan County Sheriff's Office at 509-667-6842 and leave your contact information and a detective will return your call. You can also go online to our web page, co.chelan.wa.us/sheriff and use the submit a crime tip tab or

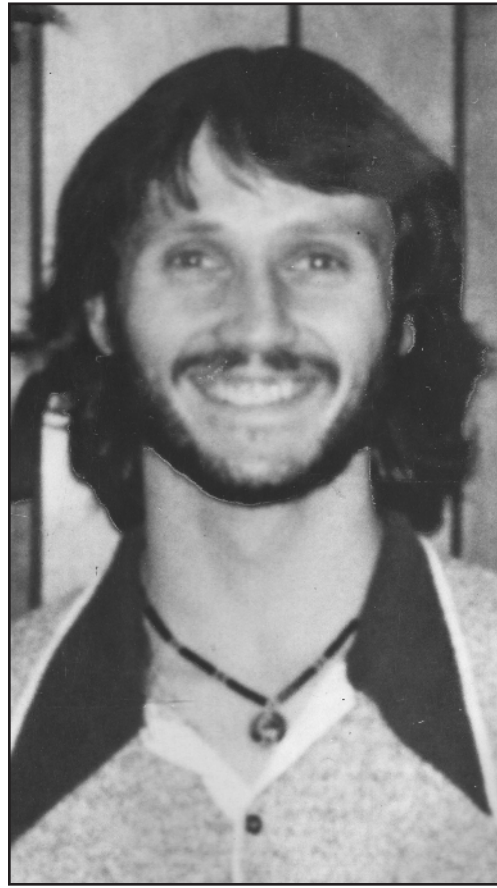


Photo submitted by Chelan County Sheriff's Office
Bernard Swaim



Photo submitted by Chelan County Sheriff's Office
Stephen Smith

message us on Facebook.

Ian Dunn can be reached at 548-5286 or

editor@leavenworthecho.com.

Council approves building height in general commercial district

By IAN DUNN
EDITOR

Despite objections from River Bend Drive residents, the Leavenworth City Council has approved an increase in building heights in the general commercial district from 35-to-50 feet. On Jan. 10, the city council remanded the measure back to the planning commission for further review.

After taking public testimony, the planning commission



File photo

Building heights in the downtown area have a 50-foot height limit.

decided to change the ordinance to accommodate nearby residential homeowners.

"The planning commission is still looking for a 50-foot height, but for the first 30-feet from the property edge, when adjoining a low density, residential, you have to stay at 35-feet, then you can go up to 50-feet," said City Development Manager Nathan Pate, at the Feb. 28 city council meeting. "The planning commission discussed other ordinances from other jurisdictions on how to average, modify. The planning commission and those attending felt this was the best solution to bring forward to council for consideration."

The measure was remanded back to the planning commission, Councilman Elmer Larsen said, because they were looking at the impact, not just on River Bend Drive. It was not known what the height increase would do to the adjoining properties in other parts of the city.

Pate said the planning commission considered the historic buffer between multi-family, commercial and residential.

"They talked a lot about what areas did not have that buffer. There's a couple small pieces along the highway, but very marginal in impact," Pate said. "One of the major pieces north of the highway is the Ranger station, which we don't anticipate any changes in the coming years. They really felt this solution was palatable."

Councilwoman Sharon Waters said she still had a hang up. She counted 27 homes that are bordering the general commercial area. She was concerned because they had not heard from those people.

Waters felt the city needed to better reach out to those homeowners. In the planning department realm, Pate said notice

was successful.

"We did have a hearing in which the council received public testimony. Again, the public showed up to voice their concerns. In my world, that is 100 percent success in getting the word out to people," Pate said.

Waters said only River Bend residents are showing up to the meetings. Pate said the people that showed up understood to show up and participate. Waters still felt the city needed to find a better way to reach out to people affected by changes in the municipal code.

"We met all the requirements of the statutes. We give the usual notices. Folks show up when they chose to. If the council wants to change the standards, if you have to make new regulations, the council should have a serious conversation about the impacts of that, including legal ramifications, like challenges from developers," Pate said. "If you go outside the norm, you need to understand the impact and those unforeseen consequences."

Pate said if the city goes outside the legal process, it will be challenged on procedural errors. The code is almost always challenged on procedural errors, Pate said. City Administrator Joel Walinski said the city has a policy in place on how legal notices go out.

We need to follow that procedure, Walinski said.

"If we go to the left or right of that, that opens the door for a legal challenge for someone to, two or three years down the road, that wants to challenge some type of development brought up under this code," Walinski said. "That being said,

SEE BUILDING HEIGHT ON PAGE 2

AVID program continues to grow at Cascade High School and IRMS

By IAN DUNN
EDITOR

The AVID program is expanding in the Cascade School District. AVID, which stands for, Advancement Via Individual Determination, helps students in school, with the goal of getting them to college.

It was started last year by Malia Renner-Singer, who experienced the program in the Wenatchee School District. Cascade High School Principal, Elia Ala'ilima-Daley, gave a report on the AVID program to Cascade School Board at the Feb. 27 meeting.

"We added AVID last year with two classes, freshman and sophomore. This year, we have a freshman, sophomore and junior class. Next

at the high school, we'll roll into a senior class of it," Daley said.

Daley said it was very interesting to see a new group of freshman working with ninth grade AVID teacher, Andrea Brixey.

"They are working on study skills, better homework habits along with preparing to be a high school student," Daley said. "The transition from there to sophomore year, really understanding. Their goal is to go to college. These are the kids we wouldn't normally see go to college. We're setting them up for that."

Juniors are now working on pre-SAT work, in preparation for the April SAT. As seniors, Daley said they will be working on resumes. This type of support is provided through their career center, he said, but the AVID program provides

that support in class every other day.

Tutorials are happening right now.

"A student brings a point of concern to a class, like a problem they can't get. They stand up in front of their peers and talk about they lost it, for say a math problem," Daley said. "The other students ask questions to help trigger some thoughts so they can figure it out. We have adults from the community to help support. I had a couple seniors help with this. They were dying because they wanted to give the answer."

Tutorials are happening one or two times per week, he said. In terms of professional development for teachers, last year eight high school teachers went to San Diego for training. Half of the high school staff has been trained in AVID

and have brought back teaching strategies for their students.

AVID is not bringing back anything new, he said.

"They are just reminding us of all the great teaching strategies out there. They bundle them in a package. Our teachers have a library to go back to, so they can work on new strategies for their students," Daley said.

The 11th grade AVID students have taken walking field trips to learn more about local businesses, Gibbs Graphics, Bavarian Village Vet, Cascade Medical and Todd Smith Architects. Daley said the students are finding out what an education might do for them at the next level.

SEE AVID ON PAGE 2

THE LEAVENWORTH ECHO

Local Directory

Did you Know?
Money spent with a locally owned business generates 3.2 times more local economic benefit than when it is spent with a chain store?



215 14th St. • P.O. Box 39,
Leavenworth, WA 98826
Phone: 509-548-5286
www.leavenworthecho.com



Inside The ECHO this week

Community News..... 2	Inserts
Community Calendars 3	Dan's food Market
Community News..... 4	Safeway
Life & Health..... 5	
Neighbors..... 6	
Classifieds..... 7-8	



Community

Got Mobile?



Mobile search directory

THE LEAVENWORTH ECHO

© 2017 NCW Media, Inc.
215 14th St., P.O. Box 39
Leavenworth, WA 98826-0039
Phone: 509-548-5286
Fax 509-548-4789

Leavenworth
Mon. - Fri., 9 a.m. to 5 p.m.
Cashmere
Mon. - Fri., 9 a.m. to 5 p.m.

Publisher
Bill Forhan • 509-548-5286
publisher@leavenworthecho.com

Managing Editor
Gary Bégin
gary@ncwmedia.net

Editor
Ian Dunn
editor@leavenworthecho.com

Advertising Sales Manager
Carol Forhan • 509-548-5286
carol@leavenworthecho.com

Creative Services
Lindsay Douglas
echoads@leavenworthecho.com

Front Office Classified / Legal Notices
Susan Dorrill
classifieds@leavenworthecho.com

Circulation
Erin D. Rossell
509-293-6780
circulation@lakechelanmirror.com
website:
www.leavenworthecho.com
e-mail:
echo@leavenworthecho.com
advertising e-mail:
echoads@leavenworthecho.com

DEADLINES:
Calendar Listings: Noon, Thursday
News Submissions: Noon, Thursday
Letters to the Editor: Noon, Friday
Display Advertising: Noon, Thursday
Legal Notices: 5 p.m., Friday
Classified Ads: Noon, Monday

SUBSCRIPTIONS:
In Chelan County (yearly) \$33.00
In State (yearly) \$34.00
Out of State (yearly) \$36.50
Senior (65+ yearly in county) \$31.00
The Leavenworth Echo does not refund subscription payments except to the extent that it might fail to meet its obligation to publish each week, in which case the cost of the issues missed would be refunded as an extension. Subscriptions may be transferred to another individual or organization. 1-509-293-6780

SERVICES:
Back Issues are available up to one year after publication for a fee.
Photo Reprints are available for most photos taken by staff.

The Leavenworth Echo (USPS 308160) is published every Wednesday by NCW Media, Inc. 215 14th St., Leavenworth, WA Telephone: 509-548-5286. Fax: 509-548-4789. Periodical postage paid at Leavenworth, Wash. (and additional mailing offices) Postmaster: Send address corrections to: The Leavenworth Echo, P.O. Box 39, Leavenworth, WA 98826-0039

WNPA
Washington Newspaper Publishers Association Member
NCW Media, Inc. prints on recycled newsprint with soy ink. Please recycle.

Letters policy

The Leavenworth Echo welcomes letters to the editor. All letters must be accompanied by the author's name, a home address and a daytime phone number (for verification purposes only). Letters may be edited for length, clarity, accuracy and fairness. No letter will be published without the author's name. Thank you letters will only be printed from non-profit organizations and events. We will not publish lists of businesses, or lists of individual names. Email your letters to echo@leavenworthecho.com.

Corrections

The Leavenworth Echo regrets any errors. If you see an error, please call 509-548-5286. We will publish a correction on this page in the next issue.

Cascade High School to present the musical, Les Misérables

By IAN DUNN
EDITOR

The spring musical for Cascade High School is the classic, *Les Misérables*. The story is set in 19th century France, where Jean Valjean is hunted relentlessly over decades by the ruthless policeman, Javert, after breaking parole. Valjean agrees to care for a factory worker's daughter, changing their lives forever.

Cascade Drama Director Mandi Wickline has a deep appreciation for the play, having seen it performed on stage several times. Some years ago, a school edition became available.

"The deal with that, you have to have kids under 19 perform it. It is meant to be performed by students. I'm usually not a fan of students playing characters much older than them. I'm not a believer in putting on 'Fiddler on the Roof' or 'Death of a Salesman' in high school because the characters need to have the weight of the world on them," Wickline said.

The main character, Jean Valjean, has this incredibly wise sense about him. He's been in jail for 19 years, she said.

"At the beginning of the show, he's already aged a bit. Then, it's 10 year later. This character ends up being a bearded old man, but this is okay with me. There are certain shows where I don't think high school students should play older people or really mature subject matter," Wickline said. "But somehow, this show works and resonates with the kids."

The kids are familiar with the show because of the 2012 movie. Only three of 39 cast members had seen it on

stage.

"The message I want to send about *Les Misérables* is that it is meant to be presented as a play. It's meant to be seen on stage and sung in its original form. That is an opportunity

with the subject matter.

"The music is beautiful, legitimate. It resonates with so many people. That's why it has been performed in so many different countries. It is universal," she said. "The

in the show. Wickline actually had him in mind for a different character, but he wanted to be Valjean.

"The character has to have a giant range. He is a baritone, but sings one of the highest songs in musical theater, *Bring Him Home*. I didn't know Jonah had a falsetto. I thought he was a bass. I knew he had a large range, but he made us cry with *Bring Him Home*," Wickline said. "He's got the right soul, he's got the right maturity. He's assistant music directing. We're really blessed have somebody step into that role."

Colby Peterson is Javert. Gracie Camp is Éponine. Nicole Warren is Madame Thénardier.

"Colby has a beautiful voice. He's going to knock the socks off that part. Gracie sings one of the most famous songs in the show," she said. "We have some really great juniors coming up. Madie Vandel is Fantine, who sings *I Dream of Dream*, which is quite famous. Beautiful voice, beautiful person."

Reid Rayfield is Marius. Andrea Sorensen is Cosette. Treat Schubert is Thénardier. Laura Waltar plays a lead revolutionary, as well as understudying Cosette. Eighth graders Landon Davies and Josiah Smith play lead revolutionaries.

The show is co-directed by Ted Fredericks. Costume design by Barbara Roberts. Set design by Nik Taylor, a professional artist who's spent the last four years designing in L.A.

The first act has 18 musical numbers. Sometimes a first act will have two or three musical numbers, but this is all music, she said.

"It is insane, but the kids are

going to smash it," Wickline said. "We have some eighth graders who have leading roles that are going to just rip it up."

There are a lot of extras in the show, as you might imagine, but don't call them extras.

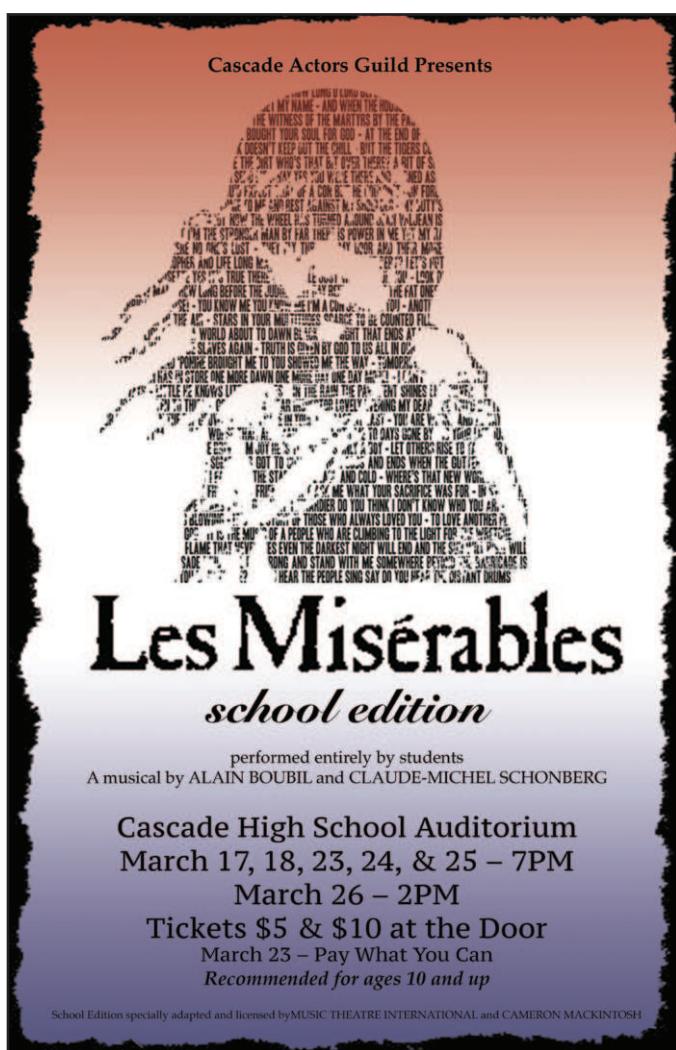
"We have a chorus singing so many different songs. They are the lifeblood of the show. There's about 10 different chorus parts. You have the convicts, the prostitutes, the sailors. In all the different numbers, you are playing a different character," she said. "Just finding the right people for those roles is really important. There are a lot of really good solos and character roles throughout the play."

The school version of *Les Misérables* is shortened version of the original, edited for length not content. Wickline said they don't pull any punches. The subject matter is the same. She believes this helps the kids because they're being treated as adults.

"The parents have been incredibly supportive. They know the show is a life changing experience. Having spent 25 years with the show, there is something magical about it. I still cry when I listen to it," she said.

The show opens at Cascade High School on Friday, March 17. It runs March 17, 18, 23, 24, 25, 26. All show are at 7 p.m. except March 26 at 2 p.m. Tickets are \$5 to \$10 at the door. March 23 is "pay what you can." Recommended for ages 10 and up.

Ian Dunn can be reached at 548-5286 or editor@leavenworthecho.com.



that these kids probably won't have again," Wickline said. "You can only do the professional version at colleges or the semi-professional or professional level."

There is some major subject matter and themes, prostitutes, extreme poverty. Wickline said the families are okay

message of the story is worth all the pain in telling it. It's about forgiveness and forgiving yourself, unconditional love, redemption. That is the word I hear over and over from parents. It is about forgiveness and redemption."

Jonah Gunter play Jean Valjean. He's one of 10 seniors

Building Height: River Bend residents express concerns

CONTINUED FROM PAGE 1

if the council wants to look at the way we notice people and provide public notice, if you do these types of changes, you do that in code. In that particular case, it needs to be reviewed by legal, and by the insurance."

Walinski said he's not saying council can't do it, but if it is changed, some further in-depth study is needed, bringing in legal, insurance, etc. Waters wondered if the city couldn't just put something in the paper, saying if you live here, come to the meeting.

"If you put the notice in the paper that identifies specific properties that aren't specified in some kind of code language, then the person next door,

they might challenge if you noticed these folks, why didn't you notice these other folks?," Walinski said. "The other piece is, you could do a blanket, which is everyone. Then, you have to consider the cost factors."

In terms of this particular code, Councilwoman Mia Bretz said she really respects the planning commission.

"I think this protection of the 35-foot for 30-foot back is a great compromise to grow in a well organized way that is thoughtful of a planning process that is community based. I think it is really great move. I support the planning commission's recommendation," Bretz said.

River Bend resident Duane Goehner said he was con-

cerned about the density factor and it's impact on the traffic congestion.

"An increase in density means an increase in number of traffic," Goehner said. "What we heard at the traffic meeting, there is no money for a solution. To me, it seems like we adding to ongoing problems for problems we don't have a solution for now."

Goehner said the 35-foot setback is great, but it does not help the density. River Bend Park Homeowner's Attorney, Steve Demarest, said the Willkommen Village development has brought a lot of things to them. All have had varying level of impact on their "island."

"Frankly, Willkommen asked for the (height) in-

crease to include Bavarian features. Didn't see that as a very sincere request by Willkommen," Demarest said. "The city council remanded that back to the planning commission. We participated with the planning commission. We felt collectively the planning commission did a good job and came up with a workable, not perfect solution."

Demarest said his group is in favor with what the planning commission is recommending to the council. He said that with one caveat.

"The caveat is the one expressed about going up higher to increase density. If you increase density, you are going to increase traffic," Demarest said. "It won't directly impact River Bend Drive, but River Bend Drive feeds to the highway where it meets with Safeway and Marsons. We recognize the concern and hope the staff will work with us and try to mitigate an obvious impact."

Another River Bend homeowner, Joe Aponik, said this code change does equal increased density.

"To me, it is very black and white. We have a problem now with no solutions, so to make a decision to increase density, it's simply saying we are making the problem worse without a solution," Aponik said.

As the council deliberated on this issue, Councilwoman Carolyn Wilson said she had concerns about the noticing, much like Waters.

"I'm not sure everyone got noticed, even though you are following the code. I think that needs to be looked at, how we notice people on things like this," Wilson said. "I'm uncomfortable not everyone has a computer or gets the paper. I think we need to look at how we notice people on things that might affect them."

Traffic flow is the main issue, Larsen said.

"I know there appears to be no answer at this point in time. We have essentially the same thing in the urban growth area. We have a large population with the same things. We don't have answers, but the WSDOT is willing to look at it," Larsen said. "I think we are trying to deal with the parking. We'll try to deal with access. We need to be aware of issues and continue to chew around the edges. I feel the frustration, but I don't know you can pick a solution that will work 20 years down the road."

The council voted 5-2 to approve, with Wilson and Waters voting against.

Ian Dunn can be reached at 548-5286 or editor@leavenworthecho.com.

TWO NIGHTS FREE CAMPING

Chelan County residential electric customers can enjoy two nights of FREE camping at Beebe Bridge Park. The 2017 Public Power Benefit program includes a pilot project offering vouchers for FREE camping to Chelan PUD customer owners – up to two vouchers per household. Each voucher is good for one night of camping.

Camping registration begins March 20 and camping starts March 31. Apply online: chelanpud.org or visit a Chelan PUD Office:

WENATCHEE OFFICE	CHELAN OFFICE	LEAVENWORTH OFFICE
327 N. Wenatchee Ave	1034 E. Woodin Ave	222 Chumstick Hwy

For details, visit chelanpud.org
Another Public Power Benefit from Chelan PUD providing the best for the most for the longest period of time.

Mitchell, Reed & Schmitt
INSURANCE, INC. Trusted Choice

Proudly offering service in Leavenworth & the Upper Valley.

980 Highway 2 • Leavenworth (509) 548-6050

Marggie Simmons
Licensed Agent

A Subsidiary of Cashmere Valley Bank Insurance products are: Not a deposit. Not FDIC insured. Not insured by any federal government agency. Not guaranteed by the bank, subject to risk and may lose value.

Now on the Net! See the area's most complete and up-to-date classifieds!

Check out our online classifieds at leavenworthecho.com & cashmerevalleyrecord.com

COMMUNITY BULLETIN BOARD

Local, Regional Community News and Events

Who: Any non-profit 501(c)(3) group, person(s) must submit full name and phone number.
What: Items pertaining to local events that are free or minimum charge.
 For two weeks only (space limited).
Where: Email to: editor@leavenworthecho.com or editor@cashmerevalleyrecord.com
 Or fill out the online form at: LeavenworthEcho.com or CashmereValleyRecord.com

Other ways to advertise your News and Events:

Garage and yard sale ads are paid events, please email these to classifieds@leavenworthecho.com
 Mention that you are a non-profit event for a discount.
 If your group is not a non-profit group you can now be listed for a small fee.
 Call for information on any of these items. 509-548-5286

Leavenworth Kindergarten registration

Kindergarten registration is open to incoming students who will be 5 years old by 8/31/2017. There are three ways to enroll a student, online at www.cascadesd.org, printing out the forms from the Cascade website or coming into Peshastin-Dryden Elementary to pick up a packet. Kindergarten welcome is scheduled for 4/12 and 4/19 from 7:45 to 9 a.m. for incoming students. This is a time for parents and future cubs to meet our amazing kindergarten staff along with becoming more familiar with our school, enrolling students online or asking questions. (e10,11)

Empty Bowls Artists Bowls Auction

Don't miss the 21st annual Empty Bowls on-line auction of bowls hand painted by local artists. From 8 a.m. March 8 through 10 p.m. March 22, nineteen bowls designed and created by local artists and potters will be available for bidding on-line at the Upper Valley MEND website (www.uvmend.org). Each bowl is also available for immediate purchase with a "buy it now" price. All proceeds from the auction benefit Leavenworth's Community Cupboard food bank and a small art grant benefitting local youth. Contact Diane Priebe, dndpartytour@gmail.com, 548-7336 or 509-630-4681. (e10,11)

Empty Bowls Soup Supper

The Leavenworth Empty Bowls Soup Supper will be held Thursday, March 23. For the first time, the supper will take place at the Leavenworth Festhalle. Soup and bread will be donated by local businesses and served by a small army of volunteers. There will be one open-house style seating, from 5:30-7:30 pm. Event parking around the Festhalle is free, thanks to the City of Leavenworth. Tickets for the event are sold out, but you can still support the Community Cupboard by bidding on an artists' bowl for the Empty Bowls on-line auction March 8-22. Check the www.uvmend.org website for more details. (e11,12)

Trout Unlimited Gear Exchange

Icicle Valley Trout Unlimited Chapter is hosting a fishing equipment and general outdoor gear exchange on Saturday, March 25 from 10 a.m. to 2 p.m. under the covered playground at Osborn Elementary School. No charge to attend as a buyer. Donations to the Chapter's conservation and youth education projects are welcome. Sellers will be charged \$10 for a 10' X 10' space to display their wares. Children under nine years will receive a free fishing rod and reel while supplies last. Additional information can be found at icicletrout.org or by calling 548-7747. (e10,11)

Hiking the Pacific Crest Trail: Washington with Tami Asars

"Hiking the Pacific Crest Trail: Washington" offers boots-on-the-ground trail beta for the state's more than 500 miles of the Pacific Crest Trail and break it down into shorter routes from the Columbia River to the Pasayten Wilderness near Canada. See Asars at 7 p.m. on Friday, March 31 at Barn Beach Reserve. Admission by donation. All ages welcome. Doors open at 6:30 p.m. For no-host refreshments. (e10,11)

Piece by Piece on the PCT

As part of North Central Regional Library's annual Columbia River Reads initiative, several libraries will be hosting outdoors-themed programs this spring. Now in its third year, the Columbia River Reads program encourages everyone in NCRL's five-county library district to read the same book. This year, that book is Cheryl Strayed's memoir Wild: From Lost to Found on the Pacific Crest Trail. Strayed will speak at a public event in Wenatchee on April 13. Piece by Piece on the PCT: How land conservation made my 2,065-mile hike possible, with Chelan-Douglas Land Trust's Hillary Schwirtlich, March 23, 6:30 p.m., Leavenworth Public Library. (e11,12)

Tour De Bloom Cycling Race

On Wednesday, March 15, at 6 p.m. at Leavenworth Fire Station, the Wenatchee Valley Velo Club is holding a public meeting regarding the Tour De Bloom Cycling Road Race, a four-stage, three-day road cycling race May 5 to May 7. Significant changes to the Leavenworth race route have been made and we would greatly appreciate your help in getting the word out to as many folks as possible in the Leavenworth, Plain, Peshastin and Lake Wenatchee areas. (e11)

Regional

North Central Regional Library launches new website

North Central Regional Library has launched its new website at www.ncrl.org. The new site was designed with user experience in mind and debuts a fresh look, more informational content, and new online resources. Improvements to the library's website include new site navigation, mobile-friendly responsive layout, integrated event software, and significantly more opportunities to highlight what the library has to offer. For more information, contact Barbara Walters at 663-1117, ext. 129. (e10,11)

Join the Red Cross movement this March by giving blood

All eligible blood donors are encouraged to give blood and help save lives in March, Red Cross Month. March has been recognized as Red Cross Month by every U.S. president since 1943 in celebration of the Red Cross volunteers who help those in need by giving their time, money or blood. Join their ranks by making an appointment to give blood by using the Red Cross Blood Donor App, visiting redcrossblood.org or calling 1-800-RED CROSS (1-800-733-2767). (e10,11)

Cascadia Conservation District Earth Day essay contest

Cascadia Conservation District is pleased to announce our 6th annual Earth Day Essay Contest! The essay contest is open to students who live or attend school in Chelan or Douglas counties and who are in grades 6-8. This year, the essay question is: Describe an experience you have had in nature, and how you connected with that experience personally. How does that make you want to be more environmentally responsible? Call for more information, 509-436-1601. The top three essays will get hand painted field journals created by local artist Heather A. Wallis Murphy and a student membership to the Wenatchee Valley Museum and Cultural Center. (e10,11)

Low Income Spay/Neuter Clinic for Cats

The Wenatchee Valley Humane Society is holding a clinic on Saturday, March 18 at the Wenatchee Community Center to spay or neuter free-roaming cats or tame cats owned by low-income residents. All cats must be over 2 months old and at least 2.5 lbs. Free-roaming or community cats may be altered at no cost to the caretaker. These cats will have one ear tipped to show that they are altered. More information will be needed for pre-approval of feral cats. Call for more information and to make a reservation, 509-662-9577. (e11,12)

Family Expo

The fifth Annual Family Expo is next Saturday, March 18 at Wenatchee High School from 10 a.m. to 3 p.m. You won't want to miss all the fun at the family-fun event. Every kid that comes through the door will get a free book of their choosing. We also have just a few booths left if you are hoping to get a booth for your business. (e11)

SPEIDEL BENTSEN LLP
 ATTORNEYS AT LAW | EST. 1986

Estate Planning
 (509) 662-1211
 7 North Wenatchee Avenue, Wenatchee
 www.SpeidelBentsen.com

Russell J. Speidel | David J. Bentsen

We provide excellent legal services in estate and tax planning, trust and estate administration, and nursing home planning.

Jonah Gunter
Mr. Kodiak Winner!



Photo submitted by Mike Hill
 Cascade High School senior, Jonah Gunter, won the recent Mr. Kodiak program. An experienced performer, Gunter impressed the crowd with a humorous piano routine.

Senior Center Events & Menus

Leavenworth Senior Center, 423 Evans St., Leavenworth
 Please call 548-6666, 24 hours in advance to reserve a meal. Meals are served at noon.

- March 16, Thursday:** Spaghetti meat sauce over noodles, vegetables, roll of read, fruit, & dessert.
- March 17, Friday:** Corned beef & cabbage, roll / bread, garden salad, fruit cup, & dessert.
- March 20, Monday:** Teriyaki beef, rice, salad, vegetables, fruit, & dessert.
- March 21, Tuesday:** Cheeseburger pie, potatoes, tossed salad, fruit, & dessert.
- March 22, Wednesday:** Sweet and sour chicken, potatoes, vegetables, salad, fruit, & dessert.

Event Calendar
 Monday, Wednesday, and Friday 10:30 a.m., **Gentle Exercise**
 2nd Tuesday, 9:00 a.m., **Leavenworth Area Seniors' Council Board meeting**
 Tuesday, 1:00-3:00 p.m., **Crafts**
 Thursday, 1:00-3:00 p.m., **Square Dancing**
 Friday, 6:00 p.m., **Bingo**
 Saturday 6:30-9:00 p.m., **Music, Public Welcome, No cover charge**

CHS & IRMS Breakfast Menu

- March 15, Wednesday:** Raspberry churros, cereal, assorted WG, fresh fruit, cheese sticks, English muffin, yogurt, milk, & juice.
- March 16, Thursday:** Blueberry muffin, cereal, assorted WG, fresh fruit, cheese sticks, English muffin, yogurt, milk & juice.
- March 17, Friday:** Waffles, cereal, assorted WG, fresh fruit, cheese sticks, English muffin, yogurt, milk & juice.
- March 20, Monday:** French Toast sticks, syrup, cereal, assorted WG, fresh fruit, cheese sticks, English muffin, yogurt, milk & juice.
- March 21, Tuesday:** Pumpkin bread, cereal, assorted WG, fresh fruit, cheese sticks, English muffin, yogurt, milk & juice.

CSD Elementary Lunch Menu

- March 15, Wednesday:** Chili verde with quinoa, pico de gallo, hamburger, chicken burger, assorted pizza, salad bar & fresh fruit.
- March 16, Thursday:** Rotini with chorizo & kale, hamburger, chicken burger, assorted pizza, salad bar & fresh fruit.
- March 17, Friday:** Macaroni & cheese with ham, hamburger, chicken burger, assorted pizza, salad bar & fresh fruit.
- March 20, Monday:** Cordon Bleu casserole, hamburgers, tater tots, assorted pizza, salad bar & fresh fruit.
- March 21, Tuesday:** Meatloaf mashed potato, hamburger, chicken burger, assorted pizza, salad bar & fresh fruit.

AA Meeting Schedule

- Wednesday, 7 p.m.,** Alcoholics Anonymous, Leavenworth Senior Center, 548-4522, 664-6469 or 425-773-7527.
- Thursday, 7 p.m.,** Alcoholics Anonymous, United Church of Christ, 8455 Main St. in Peshastin, 548-4522, 664-6469 or 425-773-7527.
- Friday, 7 p.m.,** Women's Alcoholic Anonymous, Leavenworth United Methodist Church, 418 Evans St., 548-6851.
- Monday, 6:30 p.m.** Narcotics Anonymous group meets every Monday at the Leavenworth Senior Center.
- 7 p.m.,** Al-Anon meeting, Leavenworth United Methodist Church, 548-7939.

City Council Meetings

- 7 p.m., Leavenworth Planning Commission,** City Hall Conference Room, Nathan Pate 548-5275 (1st Wed.)
- 9 a.m., Leavenworth City Council study session,** City Hall, Joel Walinski 548-5275. (2nd Tues.)
- 3 p.m., Design Review Board,** City Hall, Sue Cragun 548-5275 (2nd & 4th Tues.)
- 6:30 p.m., Leavenworth City Council meeting,** City Hall, Joel Walinski 548-5275 (2nd & 4th Tues.)

Your local news is just a mouse-click away.
The Leavenworth Echo

Community Calendar

- Wednesday, March 15**
- 8:30 a.m., Aerobics,** Plain Community Church, \$1 fee Mon./Wed./Fri. 763-3621.
 - 8:30 to 10 a.m., Play and Learn Group,** Peshastin Head Start. Cheby Ledesma. 548-7614.
 - 6:30 p.m. to 8 p.m., Children and Youth program,** age 4-12th grade, Leavenworth Church of the Nazarene, 548-5292.
- Thursday, March 16**
- 8 a.m., Leavenworth Chamber of Commerce,** Kristall's Restaurant, Paula Helsel, president. 548-5807. Everyone is invited to attend as a guest.
 - Noon, Leavenworth Lions Club,** Kristall's Restaurant, Barbara Dower (509) 393-2642.
- Friday, March 17**
- 11:45 a.m., Leavenworth Rotary Club,** Kristall's, Mary Schiebler, 548-7115
- Monday, March 20**
- 8:30 a.m., Aerobics,** Plain Community Church, \$1 fee Mon./Wed./Fri. 763-3621.
 - 6:30 p.m. The Upper Valley Free Clinic** evaluates urgent health needs; Dental consultation is available the 1st Mon. of the month. Contact Upper Valley MEND for inquiries: 548-0408.
 - 6:30 p.m. Young Life Club Monday Nights.** All high school age students welcome. TJ Kaapuni 509-679-3247.
 - 7 p.m. Leavenworth Mosquito District** board meeting at Chelan Co. PUD building, Jenny Mullins 548-5904.
- Tuesday, March 21**
- 9 a.m. Peshastin Water District,** Peshastin Memorial Hall, Abby Bergren, 548-5266.
 - Noon, Upper Valley Women's Bible Study** at King Ludwig's, Delores Hall, 548-7803.
 - 1 p.m., Buns, Book and Tea, Peshastin Book Club,** Peshastin Library. Kathy Springer, 548-4807.
 - 1 p.m., Cascade Education Foundation,** Board Room at Cascade District office, Ken West 670-1729.

- Ongoing events**
- Leavenworth Public Library, Mon. - Wed., 9 to 6; Thursday 9 to 8, Fri. 9 to 6.** Closed on weekends and Holidays. **Baby story time, Tuesdays 11:30 a.m. Preschool story time, Tuesday's 1:30 p.m.** Call 548-7923.
 - Peshastin Public Library, Tues., Thurs., Fri. 1 p.m. - 6 p.m.; Wed. 9 a.m.-2 p.m.** with Story Time 10:30 a.m. Closed Monday and weekends. 548-7821.
 - Upper Valley Museum, Thurs. - Sat. 10 a.m. - 4 p.m. and Sun. 11 a.m. - 3 p.m.** 347 Division St., 548-0728.
 - Leavenworth Fish Hatchery, 8 a.m. to 3:30 p.m.,** daily 548-7641.

- Regional events**
- Tue. & Thur. 1 to 4 p.m., SCORE** (small business counseling), Wenatchee Valley Chamber of Commerce, 2 S. Chelan St., Wenatchee call for appointment, 888-2900.
 - 3:30 p.m., Cascadia Conservation District Board Meeting** in the Upstairs Conference Room at the Wenatchee World Building, 14 N. Mission St., Wenatchee. For more information, call the District 436-1601. (3rd Thurs.)
 - 1 to 4 p.m., Master Gardener Clinic,** WSU Chelan/Douglas County Master Gardener Plant Clinic, 1100 N. Western Ave., Wenatchee. 667-6540 (April to October) 1-4 p.m. Wednesdays in March.
- Some meetings or events may be rescheduled. Please check with the organization about the time.**

HOWELL at the MOVIES

WITH JAMIE HOWELL

At age 13, Magnus Carlsen became the world's youngest Chess Grand Master. At age 13, I was grounded a lot.

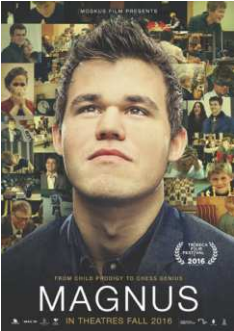
Today, he's the rock star of the chess world. Today, I'm writing about the rock star of the chess world - no judgment, just different paths (and, okay, different levels of genius).

For this week's installment of the Icicle Creek Film Series, I've got **MAGNUS** for you, a documentary from director Benjamin Ree that charts this young Norwegian's journey from bullied outcast and oddball to the world's most celebrated chess player since Bobby Fischer.

MAGNUS will absolutely boggle your mind when you see what is possible for the human brain. How do you explain someone who can sit blindfolded with his back to 10 opponents and outplay them all at the same time?

But any blessing can be a curse, and that is the path young **MAGNUS** must navigate while he becomes the highest ranked chess player of all time.

Make your move down to the Snowy Owl Theater this week to see if rook takes pawn, or if **MAGNUS** has another endgame in mind.



7 PM, THURS, MAR 16
MAGNUS
 Sponsored by Fresh Burger Cafe

Presented by **ICICLE CREEK CENTER FOR THE ARTS** Advance **\$10 \$12 DOOR** Student **\$7 \$9 DOOR** At **SNOWY OWL THEATER**

Tickets: **ICICLE.ORG** or (509) 548-6347 x1

Local businesses pitch in with gusto for Empty Bowls Soup Supper

SUBMITTED BY MARA BOHMAN

The list is long, and the enthusiasm strong with ten local businesses contributing delicious food to this year's Empty Bowls Soup Supper on March 23. This fundraising event for Upper Valley MEND, in its 21st year, continues to grow, helping to provide local families with housing, food and other needs. Supper coor-



Photo submitted by Mara Bohman
Nadine of Good Mood Food

dinator (aka Soupervisor), Heather Knight, lends her vast experience in the food industry to this year's event, being held for the first time in the Festhalle.

Heather and her husband, Kevin, have owned and operated Anjou Bakery just east of Cashmere, for over 20 years. Through hard work and dedication to innovation and quality they create scrumptious baked goods. They'll be contributing their award-winning artisan bread to the soup supper this year as they have done most every year since Empty Bowls began.

Kurt and Nadine of Good Mood Food have been contributing delicious and nutritious creations to the Empty Bowls Soup Supper ever since they opened in 2009. Prior to that the two European-trained culinarians worked at local restaurants (Kurt at Sleeping Lady and Nadine

at Viscontis). They are very enthusiastic about Empty Bowls. "It's great to see all ages getting involved in decorating the bowls and in the end they have helped a good cause and gone home with a souvenir," stated Nadine. And they go one step further by purchasing bowls every year for their employees to paint.

Watershed Café, which opened in June of 2015, participated last year and will once again be serving up one of their delicious soups at the supper this year. Co-owners Dan, Joey and Brian, are happy to help support the commu-

supper for the second year is Wok About Grill. Co-owners Shon and Janeen will be whipping up one of their delicious stir-fry dishes for this year's event. After operating Wok About Grill in Wenatchee for 20 years, they expanded into Leavenworth in 2014. According to Shon, "We like to use our restaurant as an outreach and thank you to the community".

Amber and Colin, co-owners of Mana, will be joining the team of Empty Bowls culinary wizards for the first time this year. Known for their unique 8 course farm to table 'journey



Photo submitted by Mara Bohman
Heather Knight of Anjou Bakery

Mulligatawny soup. Supporters of Empty Bowls for over 10 years, they're extending this classic St. Patrick's Day dish for all to enjoy at the soup supper.

Two more local restaurants, Viscontis and Alley Café, deserve special recognition and appreciation as they have contributed every year since this amazing fundraiser for Upper Valley MEND began 21 years ago. Viscontis owners, Dan and Candy, have a real commitment to giving back to the community, evident in their participation. Alley Café owner, Steve, is also incredibly involved in the community and continues to apply this dedication by contributing and tirelessly helping out with the soup supper.

In addition to Anjou, several other local bakeries will be providing delicious bread for the supper. Dan's food market, which owns Homefires Bakery, has been a long-time supporter of Empty Bowls. Leavenworth's Bavarian Bakery and Sure to Rise Bakery from Cashmere will also contribute bread as they have done for many years.

While the generous contributions of all the above-mentioned businesses will provide ample delicious food to the Soup Supper, Heather points out that this event is not only about raising funds for Upper Valley MEND, but about raising awareness about food insecurity in our community. According to Heather, "The point is not about having a dinner. Not everyone gets to eat until they are full or choose what they eat. The bowl is symbolic." We appreciate all the work of 'Soupervisor' Heather Knight and the enthusiasm and generosity of all of these local businesses to help make the Empty Bowls Soup Supper 2017 a success.

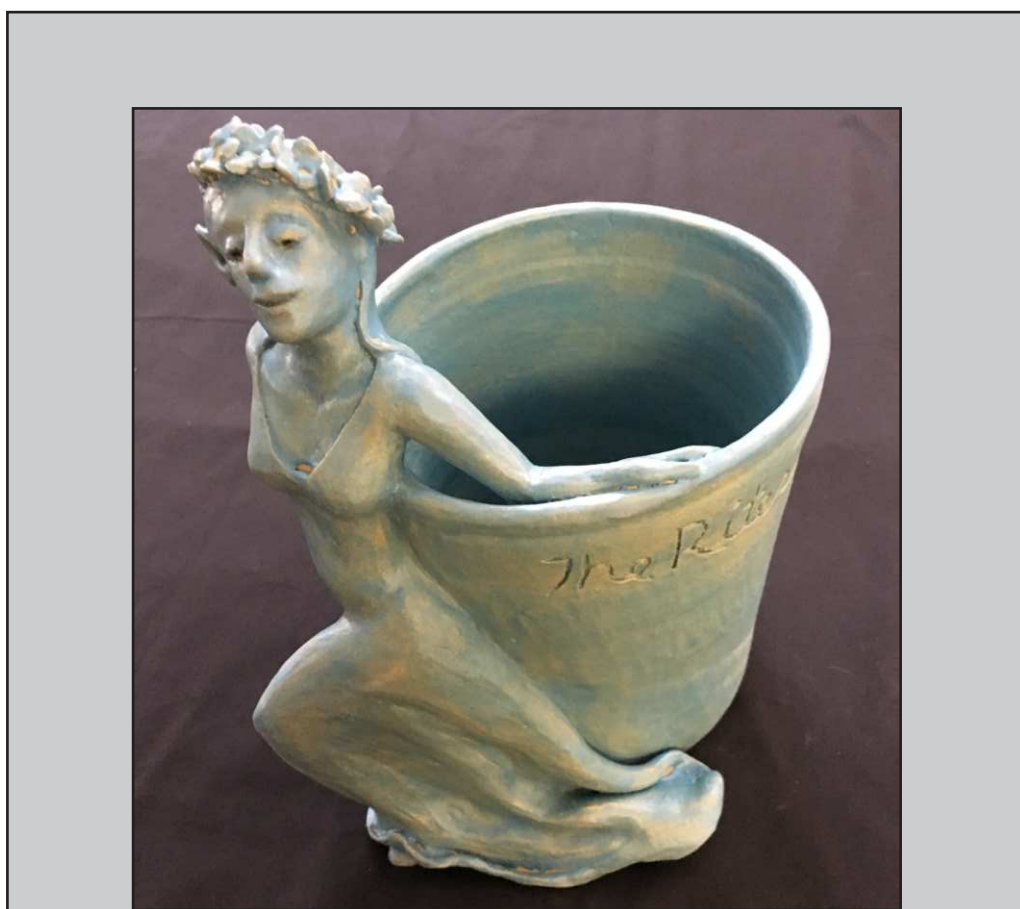


Photo submitted by Linda Porlier
The Empty Bowls Committee has one more wonderful bowl made by Janna Sparks for the Auction. Janna has named this piece "Rights of Spring." She describes it as Dancing in Spring Time. The Empty Bowls Auction Bowls and can be viewed and bid-on at www.uvmend.org until March 22 and the dinner on March 23 at the Festhalle.

nity. The Empty Bowls project also speaks to their core values, which include food security and environmental responsibility.

Another restaurant contributing to the soup

through the senses' dining experience, their contribution is welcome.

Chef's Joe and Bill from JJ Hills at Icicle Village Resort will be serving up their tasty

Cashmere Community Concerts presents Fern Hill Bluegrass



Photo submitted by Marie Vecchio

Cashmere Community Concerts present Fern Hill Bluegrass Band on Saturday, March 18, at 7:30 p.m. at the Riverside Center in Cashmere. Featuring bluegrass music in the style of the classic bands of the 1950s.

SUBMITTED BY CINDY JACKSON

Cashmere Community Concerts and Fern Hill Bluegrass Band, will ring in the Spring Saturday, March 18, at 7:30 p.m. Fern Hill approaches its bluegrass music in the style of the classic bands of the 1950's and are one of the few bands in the Northwest that plays in the traditional style of Jimmy Martin and Bill Monroe. This special attention to detail results in an instantly identifiable rhythmic sound that both devotees and newcomers to the music will love. With many years of experience, they are dedicated to do their best and have fun playing the music straight from their hearts and it shows in their performances.

Paul Smith, lead vocals/rhythm guitar. Paul can sing all the harmony parts from tenor to bass. He has played this music since his childhood days and for years performed with Northwest bands playing guitar and bass.

Mike Eisler, harmony vo-

cal/fiddle. Mike, nicknamed "Crazy Fiddle," is a veteran multi-instrumentalist for many well know west coast bands. He has a recent original instrumental project recorded called "Lost Tribe."

Rollie Champe, tenor and lead vocals/mandolin. Rollie, who also plays guitar and bass, has played in many well-known bands from Oregon to South Carolina. He has a classic bluegrass tenor voice and contributes to any harmony part.

John Van Brocklin, vocals/banjo. John is known for his strong, straight ahead, classic banjo style's of J.D. Crowe, Ralph Stanley and Earl Scruggs. He pushes the band's sound along like a locomotive.

Brett Champe, harmony vocals/bass. Brett is the newest member of the band, but has been immersed in bluegrass his entire life. He's developed his own unique style of singing, using his high tenor and baritone vocals to Fern Hill's close harmonies. A multi-

instrumentalist, Brett adds variety to the band's instrumentation.

This music event is brought to you by the good folks of the Cashmere Community Concerts, a non-profit organization whose mission is to provide live, affordable, high quality entertainment to the Wenatchee Valley. A cover charge of \$3.00 per person at the door will help to cover expenses. Refreshments are provided.

The musicians will be paid by a onetime Hat Pass; a suggested donation of \$8 to \$11 per person will be greatly appreciated. Enjoy great bluegrass music in an alcohol free environment with concert seating. The Riverside Center is located at 201 Riverside Drive, Cashmere. Doors open at 7 p.m. For more information call Marie 548-1230 or Chuck 548-8663. The Cashmere Community Concerts series can also be found on the web at www.cashmereconcerts.com.

AVID: Future funding is a concern

CONTINUED FROM PAGE 1

To this point, the funding for training has come from grants. Daley said it is unknown how the program will be funded in the future. The district is going to have to figure that out, he said. Eighteen students are enrolled in eighth grade AVID, taught by Leah Boggs.

"They are struggling with the scheduling of it. It comes during their enrichment time on Tuesdays and Thursdays. All of eighth grade is the Cornell notes. You hear us talk about that a lot. It is a way of organizing your notes, critical thinking, questions. Not just writing the notes down and trying to memorize it," Daley said. "They use them at the high school. So there's that continuity. The sixth and seventh grade teams are looking to go down (to San Diego), if they can receive the funding."

The Osborn teachers are the next to go for training. Daley said they are funded through Title One for professional development.

"AVID is designed to be embedded in the instruction of all elementary classrooms, across all grade levels to impact school wide structure. They are not doing tutorials, they are doing school wide structures. They do Cornell notes and teaching strategies all the kids know," Daley said. "To walk into our classrooms and see our teachers doing well makes you feel good

about the program. At the same time, does the cost justify what we are doing?"

There are some field trips planned, college visits. They will be doing two college visits per year, Western, Eastern, WSU, UW. To get into the AVID program, you must have a certain GPA.

"The GPA can't be too low or too high. It's for the kids in the middle. If they are first generation college students, if they've had a traumatic event, divorce, death. You have to apply to be in there," Daley said. "To exit, your parents have to come in. Some kids have been exited out, if they can't meet the 2.0 grade point average. It is a bit of a privilege, but too much work for some kids. We have some kids that are creative with it."

Currently, there are 20 students in 11th grade, 17 in 10th grade, 19 in ninth grade and 18 in eighth grade. Board member Jennifer Pickel asked if they are able to track student success after high school.

"After they graduate, that's when we have to do the metrics to see if they stay in school. They are graduating and going to college, but are they staying in school? That's what we'll figure out in a couple of years," Daley said.

Ian Dunn can be reached at 548-5286 or editor@leavenworthecho.com.

Skiers enjoy near perfect conditions for 2017 Baake Cup

SUBMITTED BY JIM MENNA

Under the exceptional mix of sunny skies and snow flurries on March 4, a Leavenworth classic and signature event of the storied Leavenworth Winter Sports Club was run. Baake Cup, which embraces and combines all three facets of Upper Wenatchee Valley ski history and heritage - Nordic skiing, alpine skiing and ski jumping - is open to all comers under age 18. This year had a full range with its youngest ever competitor at three and one of its oldest at 17. Competitors completed two runs on the giant slalom course, two jumps from one of the ski jumps and then, once those times and distances were compiled and the challengers seeded, raced in a Nordic pursuit with the first finishers in their age group claiming the title of Baake Cup champion. The event, a celebration of the

links to and traditions of the past, the advancements of children's ski abilities, camaraderie and long-lasting friendships gained through skiing and the mixed ski cultures inherent to Leavenworth, ended with a rousing awards ceremony and barbecue on the memorial patio of the historic Ski Hill Lodge.

With a long history of multi-event races, among them the "Ma Miller" and "Hatmaker," the Baake Cup has been running since 2010. The Baake family, the driving force in the middle half of the last century to transform the Leavenworth Ski Hill into a national ski jumping destination, includes National Ski Hall of Fame members Magnus and Hermond Bakke. Kjell Bakke, son of Magnus and life-long benefactor of the ski club, presided over the event.

The 2017 Baake Cup winners:

Age group	Girls	Boys
7 & under	Allison Ward	Owen Sanborn
8/9	Caroline Menna	Ethan Fallon
10/11	McKenzie Sheppard	Calvin Wilder
12/13	Greer Swoboda	Derek "Buster" Richardson
14-17	Stella Johnson	Steven Tveten

The
Leavenworth Echo

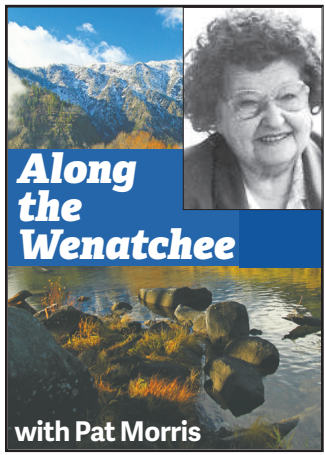
echo@leavenworthecho.com • www.leavenworthecho.com

Cashmere Valley
RECORD

record@cashmerevalleyrecord.com • www.cashmerevalleyrecord.com

Life & Health

Picnic, coffee and speeches welcome Tumwater Canyon's opening



Along
the
Wenatchee

with Pat Morris

The official opening of Stevens Pass highway was July 11, 1925, after a party of Wenatchee Valley residents waded deep snow to finally stand on the abandoned railroad switchbacks and proclaim it the site of the second crossing of the Cascades, this time through Leavenworth on a soon-to-be-built Scenic Highway.

Getting it built was no easy matter. Again, as in earlier days, the counties through which it was to pass paid the bill for the construction until action by the state Legislature brought contracts to make it a real highway.

Almost 40 years before the Bavarian Village invited the world to visit its streets and shops, a headline in the local paper announced that 5,000 visitors were expected for the festivities that weekend. The occasion was the open-

ing of Tumwater Canyon to automobiles as part of the Scenic Route.

Coast visitors were invited to come, bring a picnic lunch, listen to well-known speakers. Local festivities were the project of the chambers of commerce. They had promised free coffee to the picnic crowd.

Pete Wheeler had earned a considerable reputation for brewing coffee in quantity and he had agreed to preside over the coffee making.

The first route over the pass took travelers through Nason Creek Valley, then to Lake Wenatchee and on over Beaver Creek Hill. The patchwork of roads — all without signs — invited, and it was easy to get lost. The one-lane roads to this point, with possible cars meeting, helped keep the driver's mind on his driving. There was a bit of etiquette observed should another car appear: the car on the inside of the road was assumed to have arrived first and the oncoming vehicle must back to a turnout and allow it to proceed.

Roads then to Tye, the former Wellington at the mouth of the 3-mile tunnel, did a considerable amount of winding. While attempts were made to keep grades in the lesser range, there were hills and dips, but they kept the trip from being monotonous. The scenery was outstanding

also.

Heading over Beaver Creek Hill was hardly soothing to the

improve on nature, A.C. Barclay arranged stuffed wild animals in strategic spots



Photo courtesy Pat Morris

The train traffic on the Tumwater portion of today's Stevens Pass route had only been halted a few weeks and the ties and snowsheds removed when all who wished to see the new roadway were invited to drive across the mountains and follow pilot cars to Leavenworth. When the picnic and speeches were over, cars were asked to form a chain two cars wide and drive back west to a picture making that forever preserved the day.

nerves, but work to relocate it to part of the logging road helped. The highway ahead to Leavenworth and Dryden was possibly the farthest from being dustless of the entire trip. Local folks put in a call to the commissioners for oiling, as the once-remote route became widely used with the Scenic Highway traffic.

The opening of the Tumwater Canyon portion made a loop possible. Few places had the towering mountain heights so close at hand. To

where tourists were likely to glimpse them.

New for the occasion were rides over the route in an airplane, where plane rides traveled the Tumwater-Chumstick loop for a fee. The only thing lacking was the colorful autumn leaves, but September's early days came too soon for that.

Those who wished to travel to Dryden and on to the Columbia drove over what is called the North Road to Peshastin's steel bridge. Today's

Q: What's the difference between brand name medicines and generics?

Ask...

Dr.
Louise



Generic medicines are considered equivalent to their brand name counterparts, but they are not identical. The Food and Drug Administration (FDA) requires that generic drugs meet the same standards as brand name products, but they don't have to match them in every way.

Before they can sell a generic version of any medicine, its manufacturer must show the FDA that their product contains the same active ingredient as the brand does, and at each strength that the brand name comes in. It also must match the form and route of administration of the original or "innovator" medicine, whether it's a tablet, capsule, liquid or injection. In addition, the manufacturing processes, quality control and testing must meet the same standards as for branded products. In fact, many generic medicines are made in the exact same facility as their branded equivalent.

The generic drug manufacturer must also prove to the FDA that its medicine is bioequivalent to the brand name drug by comparing how much medicine gets into the blood of human volunteers. If the levels of the generic drug in the blood are similar to the levels after taking the brand name product, the FDA assumes the generic will work the same in your body.

Although the active ingredients have to be equivalent, the inactive ingredients don't have to be, and those differences can change the way you absorb your medicine. Just like meatballs often contain more than just meat, tablets and capsules can contain more than just their active ingredient. Diluents or fillers are added to provide bulk, as the active ingredient may only be a small amount of powder, with lactose, sucrose, kaolin, powdered starches and cellulose commonly used as fillers for tablets and capsules. Food coloring may also be mixed into the powder, causing reactions in people who are sensitive to dyes. An adhesive compound called a "binder" is often added to help it stick together when pressed into a tablet, like adding an egg to a meatball recipe to help the meat and rice "stick" together when forming it into a ball.

Many generic manufacturers use less expensive versions of fillers, dyes and binders than the branded medicine, which is perfectly allowable by the FDA as long as the active ingredient is at the same concentration as the original product.

Today there are more medicines available as an extended-release formulation. These are more complex to manufacture, making their generic versions harder to get "right". The FDA

received complaints about one generic version of Wellbutrin® XL causing headaches, nausea and a return of depressive symptoms in some people. After investigation, important differences showed up in how the generic was absorbed into the body and in October 2012 the FDA reversed its approval of generic Wellbutrin® XL, instructing its manufacturer, Teva, to take it off the market.

There's more about generic medicines at www.fda.gov/Drugs/ResourcesForYou/Consumers/BuyingUsingMedicineSafely/UnderstandingGenericDrugs.

Dr. Louise Achey, Doctor of Pharmacy is a 38-year veteran of pharmacology and author of Why Dogs Can't Eat Chocolate: How Medicines Work and How YOU Can Take Them Safely. Your questions and comments are always welcome at www.AskDrLouise.com ©2017 Louise Achey

Here are 4 tips on taking generic medicines:

1. Check for and challenge any changes in the shape or color of your medicine. Because generic medicines don't have to match the appearance of the branded version, the color or shape can change whenever your pharmacy uses a different manufacturer. Don't assume a different shape or color is just another generic.
2. Could you have the WRONG MEDICINE in your bottle? You can check yourself by searching online. In Google, type in the shape (round or oblong), color, and any markings you see on the pill. If there is a line across the tablet, type in the word "scored". Most of the time there's only one result, but if you see more than one, check with your pharmacy FIRST before taking it.
3. Ask your doctor to document your bad experience with a generic product and specify DO NOT SUBSTITUTE on your prescription. With documentation, an insurance company will usually cover the brand name product for you instead of the generic, though sometimes with a higher copayment.
4. If you notice a significant difference when switching to a generic medicine, ask your doctor to report it to the MedWatch program that is run by the FDA, which tracks adverse events caused by medicines.

Got Mobile?

Mobile search directory

Darnell's Lake Resort

Meeting Space Available
for Small Group Conferences

Darnell's Cabana on the shores of Lake Chelan offers a beautiful setting for Business Meetings up to 75 attendees

Room Discounts for Overnight Stays
Catering Options Available
800-967-8149
Ask for Group Sales
groups@darnellsresort.com

south road was not finished, for portions of cliffs that went to the river's edge hindered and demanded a sizeable bridge where we cross today.

Nearing Dryden and Cashmere, the concrete running to Wenatchee lay smooth and inviting after so much one-lane surface, some graveled and some the original part of the mountain section.

At Wenatchee, this town had at last solved the problem of how its main street should be completed. After considerable expression of opinions, etc., it had been covered with creosoted blocks stood on end in the sand. That had hardly

been completed before the state, using it as part of their route, offered funds to make it a concrete ribbon.

To do the occasion justice, a formal opening was set. A big street celebration was held attended by 10,000 people. Merchants marched to the scene. The creosoted blocks were burned to make light for the speech-making deemed necessary, games and contests were run off and finally dancing concluded the joyful occasion. Wenatchee was now ready to look her part as the Apple Capital of the World.

Cooking With Teri

A WEE BIT IRISH

According to the last US Census there are 33.3 million Americans that are of Irish ancestry. Ireland is a nation of 6.4 million people, that means we have about seven times more Irish folks than Ireland. In studying my families genealogy I have not discovered any Irish ancestors. On my husband's maternal side his great-grandmother was Mary O'Hare that lived in Ireland and was Catholic. This side of his family tree had many men that joined the priesthood. His grandfather along with several of his brothers left England and traveled to Canada. Due to religious persecution. My husband's grandfathers' brothers were both priests in the Catholic Church. One brother left Canada and moved to Australia for a church. The other two brothers moved to Cashmere where one became a priest at the Catholic mission, and the rest is history. Just a note that may husband's paternal ancestry is German. There are more people of German ancestry than Irish in this country. We are now a country of over 300 million and all of us can be a wee bit Irish on St. Patrick's Day. Put on the green, cook the corned beef and pour yourself a pint of Guinness and take nip of Jameson and say a prayer. My recipe to celebrate being Irish is perfect for a party. Enjoy!

GUINNESS AND CHEDDAR DIP

- 1- (8oz) package cream cheese, softened
- 2-1/2 cups shredded cheddar cheese
- 1 teaspoon Dijon Mustard
- 2 tablespoons half and half or milk
- Kosher salt
- 1/4 cup Guinness beer
- 2 scallions, finely chopped
- 2 tablespoons finely chopped parsley

Combine all ingredients in a bowl and stir to combine. Mix well, refrigerate at least one hour before serving. Garnish with more chopped parsley or green onion.

Note: for a more smoother dip run everything through a food processor. Serve with kettle cook or ruffled potato chips or pretzels. Drink the remaining Guinness.

QUOTE: "There are two types of people in this year, those who are Irish and those who wish they were." - Author Unknown

Teri Miller, Broker

940-A-Hwy 2
Leavenworth, WA 98826
509-669-1585
terismiller@hotmail.com
www.leavenworthrealty.com



Mountain Meadows Senior Living Campus

is pleased to announce

Heather Mondini & Mars Sharkey

as the recipient of the
2016 Employees Of The Year Service Award.



Mountain Meadows Senior Living Campus is pleased to announce that the 2016 Employee of the Year Award went to two employees this year. Honors went to Heather Mondini, dietary cook, and Mars Sharkey, memory care activity aide and personal care giver. Both employees are very loyal, compassionate, and dedicated employees who are greatly appreciated for the joy they bring to the residents and their fellow coworkers.

The Board, employees, and residents of Mountain Meadows ask you to join them in thanking both Heather and Mars for their service and congratulating them on this special recognition!

MOUNTAIN Meadows
Senior Living Campus

Independent Living Cottages • Assisted Living • Memory Care

Neighbors

BUSINESS & SERVICE Directory

Add your business or service to this directory: 548-5286

DRILLING

Tumwater Drilling and Pump Inc.

"Water Treatment Systems Built to Your Individual Problem"

Free Water Analysis/Estimates

Conveniently located on Hwy 2 across from the Big Y Cafe in Dryden @ 9290 Hwy 2

Tumwater Drilling & Pump, Inc.
Cr. Reg. #TUMWADP943RR

548-5361

www.tumwaterdrilling.com • email info@tumwaterdrilling.com

WATER SOFTENERS, IRON FILTERS, CONDITIONERS, UV FILTERS, REVERSE OSMOSIS, SULFUR, WHOLE HOUSE FILTERS, PREVENTATIVE MAINTENANCE, SERVICE, SALT SALES

Remodeling

STORAGE

REMODELING

Residential Remodeling & Structural Repairs

Foundation to Roof Inside or Out

New Construction & Room Additions

Car Ports, Garages, Decks Outbuildings

36 years in trades, over 20 years in business Local References.

DAVE SWIFT
782-5061

Contractors Lic. - REMODHMO44NW

DOWNTOWN CASHMERE MINI STORAGE

5x10-\$55 Per Month

10x10-\$75 Per Month

8x14-\$85 Per Month

•Secure Timed Keylock System•
 •Mobile Platform Available•
 •Burglar Alarm•
 •Camera Surveillance•

782-8113

201 Cottage Ave., Cashmere

EXCAVATION

Complete Excavating Service

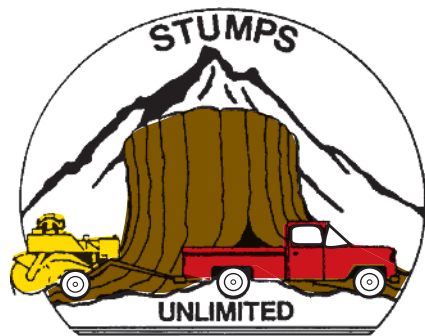
Power & Water Systems
 Dump Truck & Dozer
 Drainfield Repair
 Free Estimates
 Septic Systems
 Road Grading

(509) 548-3489
 Leavenworth, WA

Upper Valley EXCAVATING
 Licensed - Bonded - Insured

STUMP REMOVAL

Quick 'n Easy Residential Stump Removal



10817 North Road, Leavenworth • (509) 548-8222
 Kim & Rosalie Kozelisky
 Licensed, Bonded, Insured • Cont. #UPPERVE200PI

OBITUARY & MEMORIAL POLICIES

NCW MEDIA, INC.

An obituary is a way for family member(s) to commemorate a loved one's life and to notify the larger community of the deceased. Obituaries are also used for historical and ancestral data.

Memorials are another way of letting the community know about the life and memories of the person who has died. A Memorial is different from an obituary. An obituary is usually current while a memorial can be written later.

Obituaries and memorials need to be typed and emailed no later than Friday by 4:00 p.m. to be placed in the next available issue(s). Please call for cost of an obituary and which NCW paper(s) that it will be placed in to.

Cost of the obituary/ memorial is due at the time of placement. Funeral homes and chapels can submit obituaries by Noon on Monday, unless a holiday.

Obituaries are priced per word while Memorial ads are per column-inch.

For information 509-548-5286. Or contact editor@leavenworthecho.com



Autumn Leaf Festival Association

Wishes to thank all of the Businesses and Sponsors who donated so generously to the auction for the Royal Lady Gala.

- Andreas Keller
- Die Musik Box
- Icicle Ridge Winery
- Paula Saunders Salon & Spa
- Marson & Marson Lumber
- The Black Swan and Icicle
- River Clothing Company
- Your Family Name

- Carol Forhan, 2016 Royal Lady
- Ganz Klasse
- Leavenworth Nutcracker Museum
- Penny Carpenter, Marianne Quintana and the St. Clare's Quilt Guild
- Projekt Bayern
- The Taffy Shop

Thank you also to:

- Icicle Village Resort and Staff
- Entertainment for the evening Kumchu Dickinson, pianist
- All who helped with setting up, decorating and selling tickets.
- The Gala Committee Chair Penny Carpenter and co-chairs Sandra Hendrickson and Carol Forhan

- The Leavenworth Alphorns
- Myndi Hanberg-Graham, decorator extraordinaire
- The Master of Ceremonies, County Commissioner Keith Goehner honored guest
- 1972 Royal Lady, Frankie Brender and 15 other past Royal Ladies.

Thank you to all who attended and made the evening a wonderful fun filled event and we hope you will come again next March 2018
 Congratulations and Best Wishes to our new Royal Lady Cindy Hassinger, see you at the Festivals.

Rummage Sale Get the word out! 548-5286

DON'T FORGET



The Leavenworth Echo

1-509-293-6780
 To subscribe

Honoring Life

Brian Ross
 Prearrangement Specialist

LOCALLY OWNED

JONES & JONES ~ BETTS
 Funeral Home

302 9th St., Wenatchee • 662-2119 or 662-1561
 jonesjonesbetts.com

Honoring the lives of residents in the Valley for over 100 years.
 You can always rely on our dedicated staff.

"The Caring People"

Ward's Funeral Chapel

Full Service Funeral & Cremation Provider
 Pre-Arrangement Plans

Serving Leavenworth and the Wenatchee Valley since 1970
 Family owned and operated

509-548-7011 • 303 Pine St., Leavenworth
 Email: wardsfuneralchapel@nwi.net

UPPER VALLEY CHURCH GUIDE

New to our area? On vacation? These churches welcome you!

TO PLACE INFORMATION IN THE CHURCH GUIDE CALL 548-5286

CASHMERE

CASHMERE BAPTIST CHURCH

509-782-2869 • 103 Aplets Way
 Sunday School 10:00 a.m. - Worship 11 a.m.
 Bible Study, Wed., 7 p.m.
 Bob Bauer, Pastor
 www.cashmerebaptistchurch.com

CASHMERE PRESBYTERIAN CHURCH

303 Maple Street • 782-2431
 Sunday Morning Worship 10:30 a.m.
 Call for activities: Charles Clarke, Pastor
 Website: www.CashmerePres.org

CASHMERE UNITED METHODIST CHURCH

213 S. Division • 782-3811
 Worship and Sunday school at 10 a.m.
 Office Hours: Monday-Thursday from 10:00 am - 1:00 p.m.
 Rev. Lilia Felicitas-Malana, Pastor

CHRIST CENTER

Worship Celebration & Sunday School 10 A.M.
 Meeting at The Conservatory behind Apple Annie's Underground Youth Group, Sundays, 6 P.M. - 206 Vine Junior High, Wednesdays, 7 P.M. - 206 Vine Paul Williams, Pastor
 Steve Haney, Pastor
 Andy Robinson, Pastor
 christcentercashmere.org (509)782-2825

EVERGREEN BAPTIST CHURCH

5837 Evergreen Drive, 782-1662
 Sunday School - 9:45 a.m.
 Morning Worship - 11 a.m.
 Evening Service - 6:00 p.m.
 christforcashmere.org • John Smith, Pastor

GRACE LUTHERAN CHURCH

Vine & Elberta Streets • (509) 680-0736
 Worship 10:30 a.m.
 Rev. Robert Gohl, Pastor

ST. JAMES EPISCOPAL CHURCH

222 Cottage Ave. • 782-1590
 Holy Eucharist 9 a.m.
 Rev. Carol Forhan, Deacon
 Rev. Rob Gohl, Vicar - Cell 860-0736

ST. FRANCIS XAVIER

300 S. Division • Office: 548-5119
 Rectory: 782-2643
 Sunday Mass: 8:30 a.m.
 Spanish Mass: 12:30 p.m.
 Daily Mass Wednesday: 5:30 p.m.
 Friday: 9:30 a.m. Mass Convalescent Center Fr. Miguel Gonzales

DRYDEN

DRYDEN COMMUNITY CHURCH

Hwy 2 at Dryden Ave. • 782-2935
 Sunday School 9:30 a.m. • Worship 10:45 a.m.
 Matthew Payne, Pastor • 782-2935

MID-VALLEY BAPTIST CHURCH

8345 Stine Hill Rd. Dryden, WA 98821. 782.2616
 Worship Service, 10 am, Sunday School, 9 am
 Travis Connick
 www.midvalleybaptist.org

LEAVENWORTH

CASCADE MOUNTAIN BIBLE CHURCH

'Where God's Word Remains The Pillar Of Truth'
 11025 Chumstick Hwy. • 548-4331
 Sunday School 9:00 a.m.
 Sunday Worship 10:30 a.m.
 Weekly Bible Studies
 AWANA (Youth Program)
 Wed. 6:30 p.m. (school year)
 Todd James, Pastor • www.cmbiblechurch.org

COMMUNITY UNITED METHODIST

418 Evans Street - 548-5619
 Worship and Sunday school for children at 10 am. Nursery provided.
 Rev. Denise Roberts, Pastor
 www.leavenworthumc.org

CORNERSTONE BIBLE CHURCH

Leavenworth Grange Hall • 621 Front St.
 548-0748 • Sunday Worship 10 a.m.
 Weekly Bible Study/Fellowship Groups
 Monday & Wednesday 6:30 p.m.

CHURCH OF JESUS CHRIST OF LATTER-DAY SAINTS

10170 Titus Rd. (across from middle school)
 Meetings: Sunday - 10:00 am
 Church: 509 548-7667
 For any other information: 509 868-2620

FAITH LUTHERAN CHURCH - ELCA

224 Benton Street
 Worship 9:30 a.m. w/coffee following
 Web: www.faitheavenworth.org
 Reconciling Works Congregation

FIRST BAPTIST CHURCH OF LEAVENWORTH, SBC

429 Evans Street • (509) 290-0686
 Sunday School 9:45 a.m. • Worship 11 a.m.
 Michael Brownell, Pastor
 email:mkb3123@gmail.com

LEAVENWORTH

LEAVENWORTH CHURCH OF THE NAZARENE

111 Ski Hill Drive • 548-5292
 Sunday Worship: 8:45 a.m. & 10:30 a.m.
 Lead Pastor: Andy Dayton, Pastor
 Pastor of worship & Youth: Brian Shubert
 Pastor to Children & Families - Becky Goodman
 www.lcn.org

OUR LADY OF THE SNOWS CATHOLIC CHURCH

145 Wheeler Street
 Daily Mass • Tuesday & Thursday 8:30 a.m.
 Saturday Vigil 5 p.m. • Sunday Mass - 10:30 a.m.
 Spanish Mass - Saturday, 7 p.m.
 Parish Office - 548-5119 • Fr. Miguel Gonzales

SEVENTH DAY ADVENTIST CHURCH

10600 Ski Hill Drive • 548-4345
 Saturday Services
 Bible Study 9:30 a.m. • Worship 11 a.m.
 Fred Smith • 509-860-3997

SPIRIT LIFE CENTER

210 Benton Street • 548-7138
 Sunday Worship 10 a.m.,
 Prayer 6 p.m.
 Wednesday Bible Study 6:30 p.m.
 Russell Esparza, Pastor

MONITOR

Monitor United Methodist Church

3799 Fairview Canyon, (509) 782-2610
 Church Service & Sunday School 9:30am
 Pastor David Raines

PESHASTIN

LIGHT IN THE VALLEY COMMUNITY CHURCH

8455 Main Street • 548-7517
 Sunday Worship 10 a.m.
 John Romine, Pastor • www.lightinthevalley.org

PESHASTIN ASSEMBLY OF GOD

School and Lake St. Peshastin, WA. - 509.860.1088
 Sunday Worship Service 10:30 am
 Bible Adventures for Kids at 10am sharp
 Pastor Vern & Linda Watterud

PLAIN COMMUNITY CHURCH

"Helping people connect with God and one another in caring community."
 Worship 10 a.m. • 12565 Chapel Dr. • 763-3621
 plaincommunitychurch.org
 Nursery (ages 1-3)
 Children's Church (ages 4-8)
 Pastor Jon Johnson

Get the word out
 THE LEAVENWORTH ECHO
 215 14th Street • PO Box 39 • Leavenworth
 (509) 548-5286 • echo@leavenworthecho.com

classified ads

Get more for your money in The Regional Classifieds! Selling your car? Want to rent an apartment? Need a job? Yard Sale! Put your ad in print and it will also be on the Web by the same day for FREE in All NCW Media, Inc. Newspapers.



THE LEAVENWORTH ECHO RECORD HERALD MIRROR



DEADLINE for PRINT edition NOON on Monday.
\$12.00 per 30 words per week. Each additional 5 words - 50c
 classifieds@leavenworthecho.com • Leavenworth: 548-5286 & Cashmere: 782-3781
 All private party classified ads must be paid in advance.

CORRECTIONS - NCW Media, Inc. shall be responsible for corrections to advertisements on the first publication only. The advertiser will be responsible for corrections made thereafter. NCW Media, Inc. shall not be responsible for slight changes or typographical errors that do not lessen the value of the advertisement. NCW Media, Inc.'s liability for other errors or omissions in connection with an advertisement is strictly limited to the publication of the advertisement in any subsequent issue. No monetary refunds will be given.

PUBLISHER'S NOTICE

All real estate advertising in this newspaper is subject to the Fair Housing Act, which makes it illegal to advertise "any preference, limitation or discrimination based on race, color, religion, sex, handicap, familial status or national origin, or an intention to make any such preference, limitation or discrimination." This newspaper will not knowingly accept any advertising for real estate that is in violation of the law. To complain of discrimination call HUD at 1-800-669-9777. The number for hearing impaired is 1-800-927-9275.

COMMERCIAL RENTALS

Leavenworth- (2) class A office spaces available. (1) 350 square foot office and (1) 500 square foot office. Excellent location, and great parking. 509-548-5415

BUSINESS OPPORTUNITY

Attention Wine Lovers
 Join the fastest growing wine club in America that pays you. Call now for the website on how to get started. 509-997-2128.

SERVICES

Estate Manager For Hire

Twenty five years experience. I do everything! Live-in preferred. Supurb references. Think non-taxable incentives. For appointment please Call 928-466-6383 Doing business in the Upper Valley.

ANNOUNCEMENTS

HELP OUR ECONOMY SHOP LOCAL Our families live and work here.

HAPPY ADS

READ IT IN THE CLASSIFIEDS

*HAPPY BIRTHDAY!

*HAPPY ANNIVERSARY

*CONGRATULATIONS!

*WILL YOU MARRY ME?

Terms: ad must be prepaid.

\$6.00 for the first 15 words, additional words - a bit extra.

Ask about **Adding a picture for only \$2.00 more.**

Or **Bold words**

Special Fonts

and Borders for a small additional charge.

Leavenworth/Cashmere 509-548-5286

classifieds@leavenworthecho.com

Chelan 509-682-2213

mirrorads@lakechelanmirror.com

Quad City Herald 509-689-2507

heraldads@qcherald.com

LOST & FOUND

DID YOU LOSE OR FIND AN ITEM?

Lost or found items can be placed in the newspaper/online for one week for FREE.

Limit 20 words.

Call Leavenworth, 548-5286

Lake Chelan Mirror 682-2213

or

Quad City Herald 689-2507

before

Noon on Mondays.

F16-17

HELP WANTED

Okanogan County Department of Public Works is accepting applications until March 24, 2017 at 5:00 p.m. M2 Truck Driver (Area to be determined). An M2 truck driver is responsible for operating a dump truck for road maintenance, snow plowing and other light and heavy equipment operations. Starting wage is \$16.42/ hour and tops out at \$19.78 in five years. Applicants must possess a Class A commercial driver's license, current medical card, and a flagging card. Applications and job description are available at www.okanogancounty.org/Employment or contact Debi Hilts - Human Resources Coordinator at 509-422-7169. EOE

Lake Chelan Sports is seeking two retail sales associates, one full-time and one part-time. Applicants need an outgoing personality, strong work ethic and be available to work weekend hours.

Applicant should be able to lift 50 lbs. Please provide your resume to: info@lakechelansports.com Compensation will be based on previous experience.



Teller/ CSR

Wheatland Bank seeks upbeat and energetic individual with outstanding customer service skills to work on a full-time basis, in our Chelan branch.

Will perform a variety of teller services such as greeting customers, processing deposits and withdrawals, customer account maintenance, and educating customers on bank products and services. Previous cash handling and customer service experience desired. Additionally, will assist with loan processing, as needed.

Wheatland Bank Email: hr@wheatlandbank.com

Equal Opportunity Employer



Cascade School District is seeking qualified applicants for the following positions:

- Special Services Director/ IRMS Dean of Students

Fast Track application process and additional information can be found on our website at: www.cascadesd.org EOE

HELP WANTED



We are dedicated to our employees' job satisfaction and take pride in providing a place to work that encourages growth, teamwork, communication and positive employee/ supervisor relationships. We offer a generous benefits package, including employer paid Health & Life Insurance and vacation/ sick leave to full-time employees. Pro-rated benefits are available to part time employees (over 20 hrs. per wk.). You may also choose to participate in our 401K, Dental and Short Term Disability programs.

Okanogan Administration:

Patient Accounts Rep. - Full-time

Omak: Pharmacy Assistant - Full-time

Brewster Jay Ave.: Patient Accounts Rep. - Full-time

Tonasket: RN Case Manager or MA-C/ LPN - Full-time

Dental Clinics: **Must be available Saturdays**

Dental Assistants - Per Diem (as needed basis) - All locations.

Patient Registration Rep. - Full-time/ Okanogan and Twisp

See www.myfamilyhealth.org for job descriptions.

Submit cover letter and resume or application to: **FHC**

c/o Human Resources PO Box 1340 Okanogan, WA 98840

or email: HR@myfamilyhealth.org. Open until filled. FHC is an EOE Employer.



Cascade School District is seeking qualified applicants for the following positions:

- Osborn Elementary Special Education Para Educator

Substitutes in:

- Food Service Cashiers
- Teachers
- Para Professionals
- Bus Drivers
- Custodians

Fast Track application process and additional information can be found on our website at: www.cascadesd.org EOE

RN/ LPN Regency Harmony House

In Brewster is hiring RN's or LPN's for full-time Day Shift Team Leader position. For more information on our competitive wages and benefits package please contact: Wendy Hernandez, DNS at: (509)689-2546. E.O.E.

Help wanted: Assembly Chelan Falls Call or E-mail Ed Larkin 509-745-9555 hr@bainbridgcmfg.com

Love Crossword Puzzles? Be a Sponsor Call Carol 548-5286 or Lindsay 860-7301

Ready to sell or buy?

REAL ESTATE

Homes • Cabins • Condos • Acreage • Commercial Property • Investments • Businesses
 Leavenworth: 548-5286 • classifieds@leavenworthecho.com



Windermere Real Estate/NCW Leavenworth/Lake Wenatchee Specialists

Looking for real estate in the Upper Valley?

Geordie Romer • 679-8958 Allyson Romer • 630-9898

Momi Palmieri • 433-2211 Julie Averill • 206-234-2225

Give us a call today!

See all available properties at windermereleavenworth.com

HELP WANTED

Events & Membership Manager: Leavenworth Chamber

invites you to join our team. The position primarily coordinates the 5 chamber hosted festivals (Icefest, Taste Leavenworth, Maifest, Kinderfest and Christmas Lighting) and arrange the gazebo summer entertainment schedule. An applicant should have an abundance of organization, creativity, problem solving and communication skills. Position 32 - 40 hours a week, salary \$30 - 35K. Contract position or job sharing available after event proficiency, usually 1 year. Vacation, sick and benefits negotiable. Please email cover letter and resume to questservices@leavenworth.org

Find the Best Qualified Local Employee in our Classifieds Ads. Your ad will appear online and in the newspaper for one low price.

Deadline Monday at noon **Lake Chelan Mirror** 682-2213

mirrorads@lakechelanmirror.com

Leavenworth/ Cashmere 509-548-5286

classifieds@leavenworthecho.com

Deadline Tuesday at noon **Quad City Herald** 509-689-2507

heraldads@qcherald.com

All Classified Ads go in all of our newspapers



is taking applications for Summer Employment

Please visit www.slidewaters.com

for more information and to find out about being a part of our

Kitchen Team or Guard Team

For assistance, call 509-682-3515 EOE

EOE

EOE

EOE

EOE

EOE

EOE

EOE

EOE

EOE

EOE

EOE

EOE

EOE

HELP WANTED

DARNELL'S LAKE RESORT

accepting applications for Front Desk (mid-April thru mid-October), Cabana Snack Bar (Memorial Day Weekend and mid-June thru Labor Day) and Security (4.5 hour night to early morning shifts, mid-May thru Sept). College students and Snow Birds welcome. Applications at: www.darnellsresort.com under Contact tab or at Lake Chelan Boat Company Office.

PATEROS SCHOOL DISTRICT Temp One-on-One Special Ed Para Pro

This position is for the remainder of the current school year and commences on March 27th. Hours dependent on student's academic day (presently Monday - Friday, 7:30 - 3:00 p.m.). Length of employment is contingent upon student's enrollment. Special education experience preferred. Candidate must meet federal certification standards. Duties for this position include: shadowing student throughout the school day, assisting student with basic care and life skills, lifting, and working closely with the student and their teachers. Applications can be obtained at: www.pateros.org/district or the district office at 923-2751 x 4. Application deadline is noon on 3/22/17 EOE

Lake Chelan School District is seeking applicants for the following positions:

- School Psychologist
- MS Math Teacher
- MS Science Teacher
- Elementary Teachers
- Assistant Coaches
- Substitute Bus Drivers

Detailed job postings and online application process are available at: www.chelanschools.org

For assistance, call 509-682-3515 EOE

EOE

EOE

EOE

EOE

EOE

EOE

EOE

EOE

EOE

EOE

EOE

EOE

HELP WANTED

We are looking for dedicated, caring professionals to join our team!

Mid-Valley Hospital is a not for profit Critical Access Hospital providing services to the people of Omak and the surrounding areas of the Okanogan Valley. We are committed to providing optimal quality health care services and meet the needs of our community. Our employees are offered a generous benefits package including, health, dental, vision & life insurance, a profit sharing plan with the option to participate in a 403b plan, and vacation/sick leave to both full-time and part-time employees. If you would like to join our team we have the following positions available:

REGISTERED NURSE-

(1) .9 NOC ACUTE CARE and (1) Per Diem

(2) .9 NOC LABOR AND DELIVERY

(1) .75 NOC RN ER

(2) .75 NOC RN ER Float

(1) .6 NOC RN Acute Care Supervisor

CERTIFIED NURSING ASSISTANT-

.9 NOC Acute Care CNA

.9 NOC Emergency Room CNA

EMERGENCY ROOM PHYSICIAN

.9 MRI Tech

Visit www.myhealth.org to view these openings.

Interested candidates can submit an application online and attach a cover letter and resume. For further information please contact the Human Resources department at 509-826-7646.

LADY OF THE LAKE

accepting applications for Seasonal Ticketing Office Staff and Boat Concession Freight Handlers. Varying start dates of April and June through August and October. Fun jobs on the Lake. Applications available at: www.ladyofthelake.com under CONTACT or at the Lake Chelan Boat Company office.

EOE

EOE

EOE

EOE

EOE

EOE

EOE

EOE

EOE

EOE

EOE

EOE

EOE

EOE

Still can't find what you're lookin' for? Might be in the classified section. Just sayin'...

Getting the News to You! For over 100 years! Your local source for news, sports and entertainment

We can help stretch your advertising budget \$\$\$ Call us 782-3781 \$\$\$

HELP WANTED



Mountain Meadows Senior Living Campus has immediate openings for the following full-time benefitted positions:

Experienced Cook
32 - 40 hours/ week. Will be scheduled on both weekdays and some weekends. Scratch home style cooking experience in a moderately fast paced environment preferred. Wages DOE.

Dishwasher/Food Prep
32 - 40 hours/ week. Flexible scheduling required. Will work both day and early evening shifts and some weekends. Starting wage \$11.00 (+)/ hour pending experience.

Both positions require a food handlers card, background check and job references. **Hired applicant will receive paid time off, holiday pay, and can participate in an excellent insurance package.** If interested, apply at 320 Park Ave., Leavenworth, WA.

ANTIQUES & COLLECTIBLES

Get cold hard cash for your Antiques by placing them for sale in a classified ad.

Your ad will appear online and in the newspaper for one low price.

Deadline Monday at noon
Lake Chelan Mirror
682-2213
mirrorads@lakechelanmirror.com

Leavenworth Cashmere
509-548-5286
classifieds@leavenworthecho.com

Deadline Tuesday at noon
Quad City Herald
509-689-2507
heraldads@qcherald.com

All Classified Ads go in all of our newspapers

GARAGE & YARD SALE

CLEAR SOME SPACE WITH A



Fill your pockets with CASH

Let others know what items you are selling! Your ad appears online & in the newspaper for one low price

Deadline Monday at noon
Lake Chelan Mirror
682-2213

mirrorads@lakechelanmirror.com
Leavenworth/ Cashmere
509-548-5286

classifieds@leavenworthecho.com
Deadline Tuesday at noon
Quad City Herald
509-689-2507
heraldads@qcherald.com

WANTED

DID YOU KNOW?

"Items Wanted" will notify you when what you want appears in our classifieds within 7 days. Whether it's your dream job or your dream car, "Items Wanted" will email you a notification when it becomes available.

To use "Items Wanted" go to
leavenworthecho.com
cashmerevalleyrecord.com
lakechelanmirror.com

or
qcherald@qcherald.com
Go to Advertising, Submitted A Classified and follow the easy steps



Garage Sale Spread the word!
548-5286

PUBLIC NOTICES

Superior Court Of Washington For Chelan County

In the Matter of the Estate of **Robert Craig Duncan**, Deceased.
No. 17-4-00067-3
Nonprobate Notice To Creditors
(RCW 11.42.030)

The notice agent named below has elected to give notice to creditors of the above-named decedent. As of the date of the filing of a copy of this notice with the court, the notice agent has no knowledge of any other person acting as notice agent or of the appointment of a personal representative of the decedent's estate in the state of Washington. According to the records of the court as are available on the date of the filing of this notice with the court, a cause number regarding the decedent has not been issued to any other notice agent and a personal representative of the decedent's estate has not been appointed.

Any person having a claim against the decedent must, before the time the claim would be barred by any otherwise applicable statute of limitations, present the claim in the manner as provided in RCW 11.42.070 by serving on or mailing to the notice agent or the notice agent's attorney at the address stated below a copy of the claim and filing the original of the claim with the court in which the notice agent's declaration and oath were filed. The claim must be presented within the later of: (1) Thirty days after the notice agent served or mailed the notice to the creditor as provided under RCW 11.42.020(2)(c); or (2) four months after the date of first publication of the notice. If the claim is not presented within this time frame, the claim is forever barred, except as otherwise provided in RCW 11.42.050 and 11.42.060. This bar is effective as to claims against both the decedent's probate and nonprobate assets.

Date Of First Publication: March 15, 2017

The notice agent declares under penalty of perjury under the laws of the state of Washington on March 3, 2017, at Wenatchee, Washington that the foregoing is true and correct.

Notice Agent:
/s/
Kelsey Rose Duncan

Attorney for the Notice Agent:
Rani K. Sampson,
WSBA# 37486

Address for Mailing or Service:
Overcast Law Offices, PS
Attn: Rani K. Sampson
23 South Wenatchee Avenue,
Suite 320
Wenatchee, WA 98801
(509) 663-5588

Court of Notice Agent's oath and declaration:
Chelan County Superior Court
Cause Number: 17-4-00067-3

Published in the Leavenworth Echo/ Cashmere Valley Record on March 15, 22, and 29, 2017. #78113.



If you are reading this ...so are your customers. Call us for details on advertising on this page!



PUBLIC NOTICES

Superior Court of Washington For Chelan County

In the Matter of the Estate of **Don Alan Jean**, Deceased.
No. 17-4-00050-9
Notice To Creditors
(RCW 11.40.030)

The Personal Representative named below has been appointed as Personal Representative of this estate. Any person having a claim against the decedent must, before the time the claim would be barred by any otherwise applicable statute of limitations, present the claim in the manner as provided in RCW 11.40.070 by serving on or mailing to the personal representative or the Personal Representative's attorney at the address stated below a copy of the claim and filing the original of the claim with the court in which the probate proceedings were commenced. The claim must be presented within the later of: (1) Thirty days after the personal representative served or mailed the notice to the creditor as provided under RCW 11.40.020(1)(c); or (2) four months after the date of first publication of the notice. If the claim is not presented within this time frame, the claim is forever barred, except as otherwise provided in RCW 11.40.051 and 11.40.060. This bar is effective as to claims against both the decedent's probate and nonprobate assets.

Date of First Publication: March 1, 2017

Julie E. Jean
Personal Representative

Attorney for the Personal Representative:
Thomas D. Overcast,
WSBA# 14486
Address for Mailing or Service:
Overcast Law Offices, PS
Attn: Thomas D. Overcast
23 South Wenatchee Avenue,
Suite 320
Wenatchee, WA 98801
(509) 663-5588

Court of probate proceeding and cause number:
Chelan County Superior Court
Cause Number: 17-4-00050-9

Published in the Leavenworth Echo/ Cashmere Valley Record on March 1, 8, and 15, 2017. #77969.

Superior Court of Washington For Chelan County

In the matter of the estate of **Jordan F. Bulger**, Deceased.
No. 17-4-00030-4
Notice To Creditors
(RCW 11.40.030)

The person named below has been appointed as personal representative of this estate. Any person having a claim against the decedent must, before the time the claim would be barred by any otherwise applicable statute of limitations, present the claim in the manner as provided in RCW 11.40.070 by serving on or mailing to the personal representative or her attorney at the address stated below a copy of the claim and filing the original of the claim with the court in which the probate proceedings were commenced. The claim must be presented within the later of: (1) Thirty days after the personal representative served or mailed the notice to the creditor as provided under RCW 11.40.020(1)(c); or (2) four months after the date of first publication of this Notice. If the claim is not presented within this time frame, the claim is forever barred, except as otherwise provided in RCW 11.40.051 and 11.40.060. This bar is effective as to claims against both the decedent's probate and nonprobate assets.

Date of First Publication: March 8, 2017.

Vera G. Bulger,
Personal Representative
Attorney for the Personal

Representative:

PUBLIC NOTICES

Joseph C. Brown, Jr.,
WSBA# 17991
Address for Mailing or Service:
J.C. Brown Law Office, PLLC
200 Aplets Way, P.O. Box 384
Cashmere, WA 98815
(509) 782-1111

Court of probate proceeding and cause number:

Chelan County Superior Court,
Cause Number: 17-4-00030-4.

Published in the Cashmere Valley Record/ Leavenworth Echo on March 8, 15, and 22, 2017. #78079.

Got Mobile?

Mobile search directory

Sheriff/Fire/EMS

The sheriff's report is compiled from public records as provided by the Chelan County Sheriff's Office. The publisher cannot certify the complete accuracy of the information provided.

Leavenworth

Monday, March 6

No report.

Tuesday, March 7

- 03:52 Malicious mischief reported at Village Pharmacy.
- 10:08 Non injury accident reported at 22757 Brown Rd.
- 11:03 Non injury accident reported at 1329 US2.
- 11:18 Welfare check requested at Front & 8th streets.
- 11:45 Trespass reported at 220 Cascade St.
- 13:07 Non injury accident reported at Camp 12 & Beaver Valley roads.
- 17:21 Lewd conduct reported at Festhalle.
- 20:43 Public assist requested at 21328 SR207. Headwaters.
- 22:08 Non injury accident reported at 8308 Dempsey Rd.
- 22:14 Suspicious activity reported at Ski Hill Dr. & Birch St.
- 23:27 Parking/abandoned vehicle reported at Festhalle.

Wednesday, March 8

- 10:00 Warrant reported issued at Stafford & O'Grady streets.
- 10:36 Public assist requested at 9020 Icicle Rd.
- 13:25 Welfare check requested at Gazebo Park.
- 16:18 Property issue reported at Blackbird Island.
- 16:53 Civil issue reported at 8734 School St.
- 17:14 Public assist requested at Fairbridge Inn.
- 18:19 Suspicious activity reported at 612 Sherbourne St.
- 19:24 Agency assist requested at Smallwoods.
- 21:41 Traffic offense reported at 617 US2.

Thursday, March 9

- 09:12 Fraud/forgery reported at 13597 Chumstick Hwy.
- 10:53 Non injury accident reported at 10190 Chumstick Hwy.
- 12:38 Vehicle prowl reported at Stevens Pass Resort.
- 12:44 Trespass reported at Enzian Inn.
- 16:50 Welfare check requested at Icicle 76 Station.
- 17:50 Suspicious activity reported at BJ's Food and Fuel.
- 20:04 Non injury accident reported at Chumstick Hwy & Sunitch Canyon Rd.

Friday, March 10

- 13:13 Suspicious activities reported at 130 Wheeler St.
- 14:29 Suspicious activities reported at Dye & Mountain Home roads.
- 15:10 Public assist requested at 735 Front St.
- 15:12 Harass/threats reported at 302 Commercial St.
- 15:58 Animal problem reported at

Commercial and 8th streets.
17:07 Civil issue reported at Safe-way.

19:25 Hazard reported at Front & 8th streets.

Saturday, March 11

- 07:28 Parking/abandoned vehicle reported at Commercial St.
- 08:39 Disturbance reported at 7530 Saunders Rd.
- 17:50 Non injury accident reported at 960 US2.
- 18:40 Missing person reported at 833 Front St.

Sunday, March 12

- 00:27 Alarm reported at 9892 E Leavenworth Rd.
- 10:14 Public assist requested at 161 Birch St.
- 14:22 Hazard reported at US2, MP65.
- 14:32 Parking/abandoned vehicle reported at Bavarian Lodge.
- 16:08 Traffic offense reported at US2 & Front St.
- 16:14 Traffic offense reported at E Leavenworth Rd.
- 16:14 Hazard reported at 17197 N Shore Dr.
- 17:17 Theft reported at Safeway.
- 17:43 Public assist requested at Front St.

Fire/EMS Responses

Monday, March 6

No report.

Tuesday, March 7

17:21 CM,CC3 responded to a car accident at US2, MP101

Wednesday, March 8

11:01 CM,CC3 responded to a stroke at 715 Front St.

Thursday, March 9

16:31 CM,CC3,CC6 responded to an unknown accident at US97, MP179.

16:32 CM,CC6 responded to a breathing problem at 8695 School St.

17:02 CM responded to a sick person at Icicle 76 Station.

17:38 CM responded to a fall at 12973 Chumstick Hwy.

Friday, March 10

08:34 CM,CC3 responded to a cardiac issue at 1536 Alpensee Str.

12:40 CM,CC3,CC9 responded to a structure fire 22003 Stirrup Rd.

19:03 CM responded to a fall at 12721 Chumstick Hwy.

Saturday, March 11

16:38 CM,CC3 Structure fire reported at 219 Center St.

18:53 CM,CC3 responded an agency assist at the Gazebo.

19:55 CM responded to an eye problem at Mountain Meadows.

Sunday, March 12

No report.

PUZZLE SOLUTION

S	P	A	S	M	F	E	B	S	T	A	B
P	A	S	H	A	L	E	A	S	T	O	N
A	L	I	E	N	A	L	L	P	E	R	K
R	E	A	D	I	N	G	S	T	I	T	C
S	A	E	P	A	R	K					
B	A	N	C	A	S	H	Y	E	M	E	N
E	R	I	N	P	E	R	I	S	E	T	A
E	R	G	O	S	T	A	M	P	L	U	S
S	A	H	I	B	T	S	A	R	D	I	A
S	T	R	A	P	A	M	O	K	S	L	Y
L	U	L	L	E	W	E					
P	U	Z	Z	L	E	A	M	A	T	E	U
K	O	R	E	A	A	W	N	C	H	A	R
I	S	A	A	C	S	E	E	H	E	S	S
T	E	L	L	H	E	W	A	R	E	A	S

6	2	4	5	7	9	1	8	3
8	1	5	3	4	2	6	9	7
3	7	9	6	8	1	2	5	4
5	4	1	9	2	8	7	3	6
2	8	3	4	6	7	5	1	9
9	6	7	1	3	5	8	4	2
7	9	2	8	5	3	4	6	1
4	3	8	2	1	6	9	7	5
1	5	6	7	9	4	3	2	8

APPLIANCES

Pocket some cash by selling your used appliances with a classified ad.

Your ad will appear online and in the newspaper for one low price.

Deadline Monday at noon
Lake Chelan Mirror
682-2213
mirrorads@lakechelanmirror.com

Leavenworth Cashmere
509-548-5286
classifieds@leavenworthecho.com

Deadline Tuesday at noon
Quad City Herald
509-689-2507
heraldads@qcherald.com

All Classified Ads go in all of our newspapers

SUDOKU PUZZLE

GOT KNEE PAIN?

Get a Pain-Relieving Knee Brace At Little or No Cost to You. You May Qualify for Free Shipping. We Do All The Paperwork. Shoulder Braces, Ankle Braces, Back Braces Also Available.

Medicare Patients Call Us Right Now
1-800-984-0360

			5				8
8	1					6	
3	9			1	2	5	
5	4		2		7		
	3				5		
	7		3			4	2
	9	2	8			4	1
	8					7	5
5				4			

© StatePoint Media
Fill in the blank squares in the grid, making sure that every row, column and 3-by-3 box includes all digits 1 through 9.

CROSSWORD PUZZLE

THEME: HOBBIES

ACROSS

1. Tetanus symptom 6. Second mo.
9. Wild guess
13. Ottoman Empire bigwig
14. Unit of length of yarn
15. "Rock collector's pick-up
16. Blockbuster starring Sigourney Weaver
17. "___ the President's Men"
18. Lively
19. "Bibliophile's pastime
21. "Knit or purl
23. Sigma Alpha Epsilon
24. "Birdwatching site
25. Prohibit
28. "Coin collectors amass it
30. Red Sea nation
34. ___ Andrews, sportscaster
36. ___ meter or ___ scope
38. Caterpillar hairs
40. Cogito ___ sum
41. "Collector's item to a philatelist
43. One of deadly sins
44. Respected Hindu
46. Boris Godunov, e.g.
47. Buenos ___
48. Spaghetti ___
50. In a frenzy
52. Actor Stallone
53. Quiet time
55. Lamb's mother
57. "Crossword, e.g.
60. "Hobbyist, technically
64. East Asia country, pre-1945
65. Grass bristle
67. Cagey
68. Abraham's sacrifice
69. Be a witness
70. "Siddhartha" author
71. "Don's ask, don't ___"
72. Shape with an ax
73. Domains

DOWN

1. Practice in the ring
2. Opposite of sun-kissed
3. Most populous continent
4. Storage place, pl.
5. "Flashdance" song
6. "Vexillology subject
7. Underwater electricity generator
8. "Model-builder's wood
9. Let it stand, to proofreader
10. Cleopatra's necklace
11. Egyptian hieroglyph for "life"
12. Turkish title of respect
15. Kerri Walsh's moves
20. Some tides
22. "___ your hand at..."
24. ___ verb, like "ask around"
25. "What an apiarist likes
26. Woven wall hanging
27. "When backyard astronomers gaze
29. Cobblestone
31. Mix together
32. Tiny purses
33. Like Fionase
35. Type of film
37. Mosque V.I.P.
39. "Crafters' e-outlet
42. Preface
45. Novelist HonorÉ de ___
49. 1/100 of afghani
51. Zambian or Malawian money
54. Fido's restraint
56. Olden day anesthetic
57. Assume a posture
58. Russian mountain range
59. Eagerness
60. Again
61. Alleviate
62. Celestial bear
63. Whiskey grain, pl.
64. "Model-builder's purchase
66. Diminutive

dish Our Best Deal Ever!

DISH TV \$39.99/mo
INTERNET \$14.95/mo

Free Installation!
Call Today, Save 30%! **1-800-318-5121**
for more information

© StatePoint Media