



## For stage kids, there's no place like home, but the show must go on



Photo submitted by Stage Kids

By LACEY PRICE

WENATCHEE, WA – Stage Kids announced today an opportunity for the local community to help the organization – which relies heavily on gatherings for income – to survive the COVID-19 pandemic and continue equipping local youth with the life skills, character, and relationships for a bright future through the proven power of musical theater.

Approximately 85% of Stage Kids' income is dependent on gathering. Through year-round musical theater classes, camps, productions, and school partnerships, the organization helps local kids pre-K through high school develop confidence, empathy, responsibility, teamwork, vulnerability, artistry, STEM skills and more.

Stage Kids has creatively evolved most its programs to be delivered online. Only two of its spring classes had to be cancelled. The organi-

zation's spring production of *The Wizard of Oz*, which was originally scheduled for May 27 – 31 at the Numerica PAC, has been postponed to July, and outdoor venues are being explored.

"We're using these challenging circumstances to teach kids what to do when life throws you lemons, or in this case, a widespread, life-threatening virus," said Managing Director Lacey Price. "Our mission – building characters, one child at a time – is more relevant now than ever. It turns out a global pandemic is a great opportunity to teach resilience, creative problem solving, and the important role we play in our community as both responsible citizens and responsible artists. But we cannot do it on our own."

Despite efforts to reimagine program delivery, Price expects the organization will face a \$50,000+ revenue loss as a result of COVID-19. "We simply cannot reason-

ably recreate the revenue we expected from eight sold-out shows at the PAC," Price said. "Honestly, we really need our community's help to make it through this. So, we've come up with what we hope is a fun and meaningful way for people to support us by embracing what Dorothy learns following her adventure through Oz: there's no place like home."

While supplies last Stage Kids is offering t-shirts, mugs, and a charm necklace featuring the phrase "there's no place like home" in several designs, including one specifically for those who call the greater Wenatchee Valley home. Proceeds will help Stage Kids continue building characters, one child at a time, in our community. Details can be found on Stage Kids' Facebook page, [www.facebook.com/stagekidswa](http://www.facebook.com/stagekidswa).

At the same time, the show must go on. In lieu of in-person rehearsals, The

Wizard of Oz cast of 114 kids representing nine local communities have been meeting online in small groups twice per week, a convening Founder and Artistic Director Michelle McCormick calls "Zoom into Oz!"

"These gatherings are focused on building community among the cast and giving the kids an outlet for their thoughts, feelings, and creativity during these uncertain times," said McCormick.

The Stage Kids staff have also created over three hours of rehearsal video content for the cast to work on at home; however, for the next several weeks, the cast will take a break from *The Wizard of Oz* to work on something new.

"The Show Must Go Online is a brand-new virtual children's musical specifically designed to be rehearsed and performed completely online," said McCormick. "It's written by a

group we already know and love – Beat by Beat Press – who also wrote *The Grunch*, one of the kids' favorite shows which we're planning to do as a camp this summer." Details regarding Stage Kids' new production of *The Show Must Go Online* will be announced when available on the organization's Facebook page, [www.facebook.com/stagekidswa](http://www.facebook.com/stagekidswa).

Stage Kids is also moving forward plans for its three summer camps: Disney's *Aristocats* for kids pre-K through 6th grade, *The Grunch* for kids 3rd through 8th grade, and *Anything Goes* for teens 13 – 18 years old. Details and registration information can be found on Stage Kids website, [www.stagekidswa.org](http://www.stagekidswa.org).

Stage Kids is a 501(c)3 nonprofit established by Michelle McCormick in 2014. It has grown from a summer camp for 19 kids to a multi-faceted nonprofit that served 795 participants ages 4-18 representing 11

local communities in 2019. Over 6,600 patrons attended Stage Kids shows in 2019 and volunteers contributed over 5,000 hours benefitting Stage Kids that year. In the last three years, Stage Kids has awarded over \$25,000 in scholarships, so that any child who wants to experience the life-giving power of musical theater can have that opportunity.

For more information about Stage Kids, visit [www.facebook.com/stagekidswa](http://www.facebook.com/stagekidswa) or [www.stagekidswa.org](http://www.stagekidswa.org).

Stage Kids uses challenging circumstances to teach local youth resilience, creative problem solving, and the important role they play as citizens and artists; invites community support through 'There's No Place Like Home' campaign.

Lacey Price is the Managing Director of Stage Kids. She can be reached at [lacey.stagekidswa@gmail.com](mailto:lacey.stagekidswa@gmail.com) or by phone at (509) 663-6996 x11

## Reclamation seeks public comment on hatchery infrastructure improvement

SUBMITTED BY MICHAEL COFFEY  
US BUREAU OF RECLAMATION

LEAVENWORTH, Wash. – The Bureau of Reclamation is seeking comment on the rehabilitation, replacement and modernization of the Leavenworth National Fish Hatchery Surface Water Intake Fish Screens and Fish Passage Project.

The LNFH intake facility on Icicle Creek that supplies fresh water to the hatchery is deteriorating due to age and needs to comply with National Marine Fisheries Service current fish screening and fish passage criteria.

The purpose of the project is to minimize the impacts to fish listed under the Endangered Species

Act by improving fish passage and providing safe, efficient and reliable delivery of the hatchery's surface water rights from Icicle Creek.

"This hatchery plays a vital role in the continued success of the Leavenworth Fisheries Complex to provide for sport, tribal, and commercial fisheries in the Pacific Northwest," said Dawn Wiedmeier, Reclamation's Columbia-Cascades area manager.

The hatchery is one of three mitigation hatcheries established by the Grand Coulee Fish Maintenance Project to compensate for anadromous fish losses above Grand Coulee Dam. It is operated by the U.S. Fish and Wildlife Service and funded by Reclamation and

Bonneville Power Administration.

The hatchery raises and releases 1.2 million spring chinook salmon smolts annually into Icicle Creek.

Reclamation is preparing an environmental impact statement on the LNFH Surface Water Intake Fish Screens and Fish Passage Project.

Reclamation will be gathering information from other agencies, interested parties and the public on a range of possible alternatives to modernize this hatchery's water intake, fish screening and fish passage system.

The public will have the opportunity to participate in the scoping process and provide input through a web-based virtual meeting room from April 24, 2020 to May 26, 2020.

The virtual "meeting" will be accessible at <https://virtualpublicmeeting.com/swisp>.

The public can also participate in a teleconference on May 18, 2020, from 4 p.m. to 6 p.m. PDT. Subject matter experts will be available to answer any questions attendees may have about the project.

Comments must be submitted by close of business on May 26, 2020, in the web-based virtual meeting room, by email to [BOR-SHA-PNRLSWISP@usbr.gov](mailto:BOR-SHA-PNRLSWISP@usbr.gov) or by U.S. mail.

If submitting an email, please indicate "SWISP Scoping Comments" in the email subject line. To submit written comments, please contact Mr. Jason Sutter, EIS Team

Lead, Bureau of Reclamation, Columbia-Pacific Northwest Regional Office, 1150 N. Curtis Road, Boise, ID 83706.

More information can be found on the SWISP official website: <https://www.usbr.gov/pn/programs/leavenworth/swisp/index.html>.

The Bureau of Reclamation is a federal agency under the U.S. Department of the Interior and is the nation's largest wholesale water supplier and second largest producer of hydroelectric power. Its facilities also provide substantial flood control, recreation opportunities and environmental benefits. Visit our website at [www.usbr.gov](http://www.usbr.gov) and follow us on Twitter @USBR.

### During this difficult time support your neighbors

Most local businesses offer curbside service or delivery

### Inside The ECHO this week

Community Calendar..... 2	Community Partners ..... 6	Inserts
Neighbors ..... 3	Classifieds ..... 7-8	Safeway
Home, Garden & Car .... 4-5		



215 14th St. - P.O. Box 39,  
Leavenworth, WA 98826  
Phone: 509-548-5286  
[www.leavenworthecho.com](http://www.leavenworthecho.com)



**COMMUNITY BULLETIN BOARD**

Local, Regional Community News & Events

**Who:** Any non-profit 501(c)-(3) group, person(s). Must submit full name and phone number.  
**What:** Items pertaining to local events that are free or **maximum charge of \$100 fee.**  
**Where:** Email to: reporter@leavenworthecho.com or reporter@cashmerevalleyrecord.com  
 Or fill out the online form at: LeavenworthEcho.com or CashmereValleyRecord.com

**Another way to advertise your News & Events**

Go to: [www.NCWMARKET.COM](http://www.NCWMARKET.COM) • 24/7  
 Choose your category and pay for Print & Online at one time  
 For more information on any of these items. 509-548-5286 or classifieds@leavenworthecho.com



© 2020 NCW Media, Inc.  
 215 14th St., P.O. Box 39  
 Leavenworth, WA 98826-0039  
 Phone: 509-548-5286  
 Fax 509-548-4789

**website:**  
[www.ncwmarket.com](http://www.ncwmarket.com)  
[www.leavenworthecho.com](http://www.leavenworthecho.com)  
**e-mail:**  
[echo@leavenworthecho.com](mailto:echo@leavenworthecho.com)

**Publisher**  
 Bill Forhan • 509-548-5286  
[publisher@leavenworthecho.com](mailto:publisher@leavenworthecho.com)

**Managing Editor**  
 Gary Bégin  
 509-571-5302  
[gary@ncwmedia.net](mailto:gary@ncwmedia.net)

**Reporter/Photographer**  
 509-548-5286, Ext. 6516  
[Reporter@leavenworthecho.com](mailto:Reporter@leavenworthecho.com)

**Advertising Sales Manager**  
 Carol Forhan • 509-548-5286  
[carol@leavenworthecho.com](mailto:carol@leavenworthecho.com)

**Creative Services**  
[Echoads@leavenworthecho.com](mailto:Echoads@leavenworthecho.com)

**Front Office Classified / Legal Notices**  
[Classifieds@leavenworthecho.com](mailto:Classifieds@leavenworthecho.com)

**Circulation**  
 1-509-293-6780  
[circulation@lakechelanmirror.com](mailto:circulation@lakechelanmirror.com)

**DEADLINES:**  
 Calendar Listings: Noon, Thursday  
 News Submissions: Noon, Thursday  
 Letters to the Editor: Noon, Friday  
 Display Advertising: Noon, Thursday  
 Legal Notices: Noon, Friday  
 Classified Ads: Noon, Monday

**SUBSCRIPTIONS:**  
 In Chelan County (yearly) \$40.00  
 \$5.00 to include online subscription  
 In State (yearly) \$40.00  
 Out of State (yearly) \$52.00

The Leavenworth Echo does not refund subscription payments except to the extent that it might fail to meet its obligation to publish each week, in which case the cost of the issues missed would be refunded as an extension. Subscriptions may be transferred to another individual or organization. 1-509-293-6780

**SERVICES:**  
**Back Issues** are available up to one year after publication for a fee.  
**Photo Reprints** are available for most photos taken by staff.

The Leavenworth Echo (USPS 308 160) is published every Wednesday by NCW Media, Inc. 215 14th St., Leavenworth, WA Telephone: 509-548-5286. Fax: 509-548-4789. Periodical postage paid at Leavenworth, Wash. (and additional mailing offices) Postmaster: Send address corrections to: The Leavenworth Echo, P.O. Box 39, Leavenworth, WA 98826-0039



NCW Media, Inc. prints on recycled newsprint with soy ink. Please recycle.

**Letters policy**

The Leavenworth Echo welcomes letters to the editor. All letters must be accompanied by the author's name, a home address and a day-time phone number (for verification purposes only). Letters may be edited for length, clarity, accuracy and fairness. No letter will be published without the author's name. Thank you letters will only be printed from non-profit organizations and events. We will not publish lists of businesses, or lists of individual names. Email your letters to [echo@leavenworthecho.com](mailto:echo@leavenworthecho.com).

**Corrections**

The Leavenworth Echo regrets any errors. If you see an error, please call 509-548-5286. We will publish a correction on this page in the next issue.

**All events and meetings are cancelled until further notice. Contact the organization listed for update information.**

**AA Meeting Schedule**

**Information numbers for AA:**  
 The phone number to call for the Zoom link to Leavenworth AA meetings is 541-480-8946  
 The phone number to call for the Zoom link to Leavenworth AlAnon meetings is 509-548-7939  
**509-548-1627, 548-4522, 664-6469, 425-773-7527, 1-206-719-3379**  
**Sunday, 9 a.m.,** Leavenworth Senior Center, 423 Evans St.  
**Sunday, 7 p.m.,** Leavenworth Senior Center, 423 Evans St.  
**Tuesday, noon,** First Baptist Church, 429 Evans St.  
**Tuesday, 7 p.m.,** Light in the Valley, 8455 Main Street, Peshastin  
**Wednesday, 7 p.m.,** Leavenworth Senior Center, 423 Evans St.  
**Thursday, noon,** First Baptist Church, 429 Evans, Leavenworth  
**Friday, 7:30 p.m.,** Plain Community Church, 12565 Chapel Dr., Plain  
**Information number for Alanon: 509-548-7939**  
**Alanon Meeting Schedule: Monday, 7 p.m.,** United Methodist Church, 418 Evans St.  
**Celebrate Recovery**  
**Friday, dinner 5:30 p.m., meeting 6:15 p.m.** Leavenworth Church of the Nazarene, 111 Ski Hill Drive.  
 Please contact us for questions. Dave and Nancy Bartholomew 509-596-1510

**Community Calendar**

**Wednesday**  
**Peshastin Water District,** 5:30 p.m. at the Leavenworth PUD office, Contact Steve Keene, 548-5266. (2nd Wed.)  
**Prostate Cancer Awareness & Support Group,** 8:30 a.m. Kristall's Restaurant. Call David McIntyre, M.D., 206-954-4166. (2nd Wed.)  
**Children and Youth Program,** 6:30-8 p.m., 4th-12th grade, Leavenworth Church of the Nazarene, 548-5292.

**Thursday**  
**Leavenworth Chamber of Commerce,** 8 a.m. Kristall's Restaurant, President Grant Strobner. Call Chamber, 548-5807. Everyone is invited to attend as a guest. (1st & 3rd Thurs.)  
**Leavenworth Lions Club,** Kristall's Restaurant, President, Conrad Delury, call or text, 509-387-5051. (1st Thurs. at 6:30 p.m. & 3rd Thurs.at Noon)  
**Peshastin Community Council meeting,** 7 p.m. Peshastin Memorial Hall. (2nd Thurs.)  
**The Wenatchee Valley Doll Club,** 11:30 a.m. Call Yvonne, 509-663-7991. (2nd Thurs.)  
**Caregiver Support Group,** 2-3:30 p.m. For Caregivers of those with Memory Loss. The Henry Building, 120 Cottage Ave. Cashmere. Contact Carmen Gamble, 509-393-0789. (1st & 3rd Thurs.)

**Friday**  
**Chelan County Veteran Service Officer,** WorkSource, and SSVF, coffee and organizational information, 10 a.m.-1 p.m., Kristall's Restaurant. Help with DD214, VA Disability Claim and more. (1st Fri.)  
**Leavenworth Rotary Club,** 11:45 a.m. Kristall's Restaurant. President, Ken Grosse. 509-763-2753.

**Saturday**  
**No Events Scheduled.**

**Sunday**  
**See Church schedule.**  
**Monday**  
**Chumstick Grange Hall, 2 p.m.,** Helen Kensrud, 782-4086. (2nd & 4th Mon.)  
**Upper Valley Free Clinic,** 6:30 p.m., evaluates urgent health needs; dental consultation is available the 1st Mon. of the month. Contact Upper Valley MEND, 548-0408.  
**Young Life Club,** 6:30 p.m. All high school age students welcome. TJ Kaapuni, 509-679-3247. (2nd & 4th Mon.)  
**Cascade School board meetings,** 7 p.m., District Office board room. Call 548-5885. (2nd & 4th Mon.)  
**Chelan Douglas Republican Women, luncheon meeting,** 11:30 a.m. at the Wenatchee Red Lion. Contact President Ellie, 425-319-9869 (1st Mon. each month).

**Tuesday**  
**I.P.I.D. Meeting,** 8 a.m., Anthony Jantzer, 782-2561, meeting at Wescott Dr. in Cashmere. (2nd Tues.)  
**Icicle Valley Chapter of Trout Unlimited,** 6:30 p.m., Icicle Village Resort, 505 Hwy. 2, in the Lake Wenatchee Room. Call Dave, 548-0903. (2nd Tues.)  
**Cascade Medical Board Meeting,** 9 a.m. Call Cascade Medical, 548-5815. (4th Tues.)  
**Leavenworth People with Parkinson's Disease Support Group,** 11 a.m. Church of Jesus Christ of Latter Day Saints, 10170 Titus Road. Call Katherine (206) 356-4288 or Judi (425) 870-2089. (2nd Tues.)  
**Buns, Book and Tea, Peshastin Book Club,** 1 p.m., Peshastin Library. Call Kathy Springer, 509-433-1345. (3rd Tues.)  
**Cascade Education Foundation,** 1 p.m., Boardroom at Cascade District office. Call Ken West, 670-1729.  
**LWSC Alpine Committee,** 7 p.m., Ski Hill Lodge. Call 548-5477. (1st. Tues.)  
**Leavenworth Masons,** 7:30 a.m.. Zarthan Lodge No. 148, Leavenworth Senior Center upstairs. [www.leavenworthmasons.org](http://www.leavenworthmasons.org). (1st Tues.)  
**Cascade Garden Club,** 1 p.m., at a member's home or other venue. Call President Claudia, 662-7706. (3rd Tues.)

**Ongoing events**  
**Leavenworth Public Library:** 548-7923.  
 Mon., Tues., Wed., open 9 a.m. - 6 p.m.  
 Thurs., 9 a.m. - 8 p.m. and Fri., 9 a.m. - 6 p.m.  
 Closed on weekends and Holidays.  
**Special events:**  
 Tues., 11:30 a.m., Baby story time  
 Wed., 1:30 p.m., Preschool story time  
**Peshastin Public Library:** 548-7821.  
 Closed Sunday and Monday  
 Tuesday: 3-8 p.m.  
 Wednesday: 2-7 p.m.  
 Thursday: 2-7 p.m.  
 Friday: 11 a.m.-4 p.m.  
 Saturday: 12-5 p.m.  
**Special events:**  
 Thurs., 2:30, Bilingual Story time  
 Sat., Crafts: 2 p.m.  
**Upper Valley Museum:** 548-0728  
**Leavenworth Fish Hatchery,** 548-7641. 8 a.m.-3:30 p.m. 12790 Fish Hatchery Road (Daily).

**Regional events**  
**SCORE** (small business counseling), 1-4 p.m. Wenatchee Chamber of Commerce. Call for appointment, 888-2900. (Tues. & Thurs.)  
**Cascadia Conservation District Board Meeting.** 3:30 p.m., Upstairs Conference Room, Wenatchee World Building, 14 N. Mission St., Wenatchee. 509-436-1601.  
**Note:** Some meetings or events may be rescheduled due to holidays or other closures. Please call and check with that organization listed.

[leavenworthecho.com](http://leavenworthecho.com)

**Sheriff/ Fire/EMS**

**Leavenworth**

**April 17**  
 09:05 Miscellaneous, Icicle Rd.  
 09:18 Miscellaneous, 20752 Chiwawa Loop Rd., Thousand Trails  
 09:36 Trespass, 5960 Campbell Rd., Peshastin  
 11:20 Public assist, 9073 US Hwy. 2, Dryden  
 12:25 Harass/threat, US Hwy 2 & Icicle Rd.  
 12:32 Trespass, 810 US Hwy 2, Bavarian Lodge  
 13:35 Trespass, 843 Front St., Loft Bar  
 14:27 Suspicious, 11026 US Hwy. 2  
 15:03 Miscellaneous, 1174 Dempsey Rd.  
 15:19 Noise, 9894 E. Leavenworth Rd.  
 18:43 Domestic disturbance 15361 US Hwy. 2, 59'er Diner  
 21:10 Miscellaneous, 8787 Icicle Rd., Snowgrass

**April 18**  
 03:37 Noise, 9079 Deadman Hill Rd.  
 07:55 Parking/abandon, 8225 River View Rd., Peshastin  
 09:18 Property, 520 Pine St.  
 10:50 Harass/threat, 116 River Bend Dr., Safeway  
 12:20 Suspicious, 633 Front St., Bavarian Ritz  
 14:45 Public assist, 8912 Motel Rd., Dryden  
 16:11 Miscellaneous, 2265 Pine Tree Rd., Lake Wenatchee  
 16:27 Weapons violation, 11100 Blk., Chumstick Hwy.  
 18:07 Miscellaneous, 500 Alpine Pl., Alpen Rose  
 18:27 Miscellaneous, 8260 Mountain Home Rd.  
 18:52 Vehicle prowler, 3171 Camas Creek Rd.  
 22:06 Traffic offense, 3171 Camas Creek Rd., Peshastin  
 23:02 Attempt to locate, Phelps Creek Trailhead, Lake Wenatchee

**April 19**  
 00:15 Suspicious, 9079 Deadman Hill Rd., Dryden  
 00:43 Traffic offense, 9000 Blk., Deadman Hill Rd., Dryden  
 13:39 Trespass, 1310 US Hwy. 2, Blue Spirit  
 15:32 Harass/threat, 8590 Pine St., #1, Peshastin  
 18:22 Civil, 10700 Stemm Rd., Peshastin  
 20:04 Miscellaneous, 12605 Icicle Ln.  
 20:20 Civil, 3165 Hansel Ln. Peshastin  
 20:33 Trespass, 960 US Hwy. 2  
 23:20 Civil, 9860 Blewett Cutoff Rd., Peshastin

**April 20**  
 08:25 Extra patrol, 305 - 8th St., Blackbird Lodge  
 12:34 Miscellaneous, 500 Alpine Pl.  
 12:41 Parking/abandon, Chiwawa Loop Rd., MP 7  
 13:56 Sex offense, Colchuck Lake Trail  
 14:23 Welfare check, Central Ave. & Evans St.  
 22:22 Alarm, 23850 White River Rd., Lake Wenatchee

**April 21**  
 00:10 Agency assist, US Hwy. 2, MP 78, Lake Wenatchee  
 00:46 Welfare check, SR 207, MP 1, Lake Wenatchee  
 09:56 Fraud/forgery, 8820 School St., Dryden  
 11:54 Parking/abandon, 8200 River View Rd., Peshastin  
 14:02 Parking/abandon, 20752 Chiwawa Loop Rd., Thousand Trails  
 14:37 Miscellaneous, 7660 Icicle Rd.  
 15:38 Hazard, Chiwawa River Rd.  
 17:09 Hazard, Beaver Valley Rd., MP 13, Plain  
 21:02 Civil, 6145 US Hwy. 97, Peshastin  
 23:40 Suspicious, 1001 Front St.

**April 22**  
 01:03 Suspicious, 184 Eagle Pl.  
 12:58 Theft, 7948 E. Leavenworth Rd.  
 13:30 Suspicious, Commercial & 13th Streets  
 14:29 Fraud/forgery, 837 Front St., Der Sportsmann  
 15:11 Unknown accident, Camp 12 & Beaver Valley Roads  
 15:18 Welfare check, 9725 Dye Rd.  
 16:36 Theft, 9084 Deadman Hill Rd., Dryden  
 17:46 Accident/no injuries, 116 River Bend Dr., Safeway  
 18:16 Sex offense, 15263 N. Shore Dr., Lake Wenatchee

**April 23**  
 10:55 Vehicle prowler, 480 Alpine Pl., #L3  
 13:09 Theft, 12441 Hill St., Plain  
 18:02 Suspicious, 22005 Stirrup Rd., Plain

**City Council Meetings**

**7 p.m., Leavenworth Planning Commission at City Hall**  
 contact Lilith Vespier, 549-5275. (1st Wed.)  
**8 a.m., Leavenworth City Council** study session, City Hall, 548-5275. (2nd Tues.)  
**3 p.m., Design Review Board,** City Hall, Sue Cragun 548-5275 (2nd & 4th Tues.)  
**6:30 p.m., Leavenworth City Council** meeting, City Hall, 548-5275 (2nd & 4th Tues.)

**Senior Center Menus**

**Leavenworth Senior Center, 423 Evans St., Leavenworth**  
**Currently the Leavenworth Senior Center is closed due to the COVID 19 Virus. The meals on this menu will still be available at the Leavenworth Senior Center, for take-out and home delivery meals. For meal pick up and information call the Kitchen Staff at the Senior Center between 9 a.m. and 1 p.m. weekdays at (509) 548-6666 or email Leavenworthseniors@gmail.com.**  
**April 30, Thursday:** Meatloaf, potatoes and gravy, peas, garden salad, chilled pears, whole wheat roll, dessert.  
**May 1, Friday:** BBQ Chicken, macaroni salad, cauliflower, spring salad, berry shortcake.  
**May 2, Saturday and May 3, Sunday:** No lunch.  
**May 4, Monday:** Hot turkey sandwich, mashed potatoes, green beans, mixed greens salad, cranberry salad, whole wheat roll, dessert.  
**May 5, Tuesday:** Swiss steak, shell pasta, California vegetables, spiced salad, banana, French bread, dessert.  
**May 6, Wednesday:** Chicken Cordon Bleu casserole, rice pilaf, buttered peas, tossed green salad, fruit salad, focaccia bread, dessert.

**Leavenworth**

**Gathering Community News**

Hello neighbors, we would like to get some good news out in the papers since we do not have sports, community gatherings or meeting right now because of the COVID-19 virus, but if you have any good news, pictures to share with the community please feel free to email it to or [reporter@leavenworthecho.com](mailto:reporter@leavenworthecho.com) Stay well, stay strong, stay informed. (er)

**Children's Book Reading by Barbara deRubertis**

Join us via Facebook Live Feed from Mountain Meadows Senior Living, to hear local author, Barbara deRubertis, read A through Z of her Animal Antics book series. Beginning Sunday, April 19, there will be two readings each week on Sunday and Wednesday mornings 10-10:30 a.m. Each reading will have a link to follow for you to expand on the letter being shared that day. To access this reading, Search Facebook for Mountain Meadows Senior Living and scroll down to their live feed. (er 17, 18).

**Regional**

**North Central Regional Library**

While the libraries are closed, North Central Regional Library has added some new online features to bring the library to more people. Sign up for the eCard and find online resources at [www.ncrl.org](http://www.ncrl.org), and check out videos and other information on the North Central Regional Library Facebook and Instagram sites. New content is being posted daily. Designated times when people can either live-chat online or call library staff to get answers to questions and help using online resources. Live-chat for general questions is available at [ncrl.org](http://ncrl.org) weekdays from 9-11 a.m., and phone support for online resources is available by calling 509-888-8155 weekdays from 1-3 p.m. (er 18, 19).

**Dryden Transfer Station Solid Waste Update**

While COVID-19 safeguards have been in place, the large volume of transfer station customers on Fridays and Saturdays has made it difficult for staff to sanitize regularly throughout the day. For this reason, some solid waste facilities and services are returning to normal hours in an attempt to spread out the number of vehicles throughout the week. We remind people visiting the transfer stations to only bring in household garbage and brush at this time. The Dryden Transfer Station is now open regular hours Tuesday through Saturday for all credit card payers as well as commercial account holders. (Please note the new credit card system does not take debit cards – only credit.) Regular hours are posted at: <https://www.co.chelan.wa.us/solid-waste-management/pages/transfer-stations> The Dryden Transfer Station will be open only Friday and Saturday to those members of the general public who must use cash or check to pay. The Dryden Transfer Station brush yard is open regular hours to ONLY customers who pay by credit card or have a commercial account. Cost is \$15 for loads under 200 pounds. For the Leavenworth Drop off Brush Yard, see: <https://cityofleavenworth.com/city-of-leavenworth-spring-clean-up-april-1-30-2020/> (er 18, 19).

**Integrated Resource Plan**

Chelan County PUD is developing a new Integrated Resource Plan (IRP) as required by state law. The 10-year plan outlines the sources of power needed to supply PUD customers. A new IRP must be developed every four years and updated every two years.

**Schedule for the 2020 IRP:**

- May 11** PUD Commission begins discussion
- June 15** Present final draft to Commission
- July 6** Hearing on final IRP and Commission action

The first two presentations will be made during regular PUD commission study sessions that begin at 10 a.m. in the boardroom at 327 N. Wenatchee Ave. The hearing will be at 1 p.m. during a commission business meeting at the same location.

Visit [chelanpud.org](http://chelanpud.org), "Integrated Resource Plan," for more information.



Obituaries

*William H. Wells Jr.*  
February 25, 1934 – April 15, 2020

William "Bill" Wells passed away peacefully in his home in Leavenworth, Washington surrounded by his family on April 15. He was born in Seattle, Washington, and attended Lincoln High School. In 1953 he joined the US Army and was in the Signal Corps, Alaska Communication System in the territory of Alaska until 1956.

During that time, Wells married his sweetheart, Dorothy "Diane" (DeDe) Walker and they had two children, Steven A. and Shelley L. (Winterer). They relocated to Yakima in 1958 where he attended J.M. Perry Technical Institute earning the Aircraft and Power Plant (A&P) license after completing his restoration of a 1947 Aeronca 7AC Champ in 1960. Working in 1962 for a helicopter services company as a skilled mechanic, Wells received his private pilot license in fixed-wing craft.

When he was hired by Cascade Helicopters, Inc., he earned his FAA Commercial Rotorcraft license and FAA Certified Flight Instructor (CFI) license in 1963/64. His flying missions included agricultural spraying, search and rescue, Forest Service and Department of Natural Resources fire suppression, government contracting, geological survey, volcanology scientist team, recreational, transmission line installation, and law enforcement. Wells flew a National Geographic photographer all over the Enchantments in 1968 to photograph the beauty of the area and that became the cover story in the magazine. That exposure led to the eventual designation of The Alpine Lakes Wilderness area. By 1988, Wells was owner and president of Cascade Helicopters Inc., Cashmere Washington.

In 2002 Wells was elected international "Pilot of the Year" by his



colleagues based on his accident-free missions and the quality of his service, safety, and rescue being of the highest level. Wells logged over 11,500 accident-free hours over the course of his career. In 2002, Wells retired and closed Cascade Helicopters. He felt that the hundreds of rescues he was able to perform were what, "being a helicopter pilot was all about."

In addition to flying and running a helicopter business Wells was active in the industry on a national and international scale. He was involved in Helicopter Association International, based in Alexandria, Virginia and served on the board of directors and as Chairman in 1994 to 1995. Closer to home he served on the Pangborn Airport Board and helped oversee the construction of the new (present) terminal and micro-wave landing system.

Bill and Diane were both very active in Leavenworth and promoted the Bavarian theme of the small town. They owned a shop, Alpen Hansel, which was a European Gift and Art shop in downtown Leavenworth. Bill

and Diane spent many gift-buying trips in their beloved Bavaria. In 1993, Wells was a Kanzler (president, chairman) for the Royal Bavarians, at the same time Diane was chosen as "Royal Lady". He had served on the Leavenworth Planning Commission and as a Leavenworth City Council member, Mayor pro tem and, until March 18, was a board member on Projekt Bayern and the Nutcracker Museum. He was a long-time member of Grace Lutheran Church, Cashmere. Bill's hobby has been cars, especially older hot rods. He enjoyed restoring his Model A Ford and building and driving his 37 Ford street rod. He had many friends in the local rodding family and enjoyed spending time with them and talking cars. Bill is survived by his loving bride of 66 years, Diane Wells, his son Steve Wells (Janet), daughter Shelley Winterer (Frank), Grandfather "Opa" to five grandchildren, Cami Ulrich (Jon), Kelli Fletcher (Justin), Eric Wells (Crystal), Cameron Winterer, and Devon Winterer, and "Great-Opa" to Spencer Wells, Caroline and Elise Ulrich, and Walter and Emmeline Fletcher. Wells was preceded in death by his mom, Nadine, stepfather Rod Mullen, and his father William H. Wells, Sr.

In Lieu of flowers, please send donations to your favorite charity; Hospice Care Confluence Health; The Nutcracker Museum, Leavenworth. A Celebration of Life will be announced at a later date.

*Elizabeth (Betty) Miriam McMahon*  
April 7, 1936 – April 5, 2020

Elizabeth (Betty) Miriam McMahon, age 83, passed away peacefully in Lacey, WA on April 5, 2020 with family by her side. Elizabeth was born April 7, 1936 in Philadelphia, Pennsylvania. Her family moved to Peshastin where she went to school and graduated from Peshastin Dryden High School.

There she met Terry J. McMahon and they were married on September 3, 1960. They raised their family in Leavenworth and eventually settled in Lacey where the boys went to high school. Betty loved to garden and plant flowers. Her yard was filled with flowers and trees. She loved to watch old movies and collect them. She also loved to travel with her family.

She went on a cruise to Mexico with her boys, went to Whistler a lot with her brother and sister, and she took many trips to Maui which she loved.

The highlight of her life is when her oldest son Darren, wife Jill, and her granddaughters went to Ireland.



Elizabeth loved spending time with her boys and their families. She loved her grandchildren and she was so proud of each and everyone of them.

Elizabeth is survived by her sons, Darren McMahon (Jill), Dwayne McMahon (Debbie), Dennis McMahon (Niki). Elizabeth has six grandchildren: Megan, Jamie, Seneca, Kinna, Carson and Nathan. She has two great grandchildren, Waylon and Weston.

We hope to have a Celebration of Life later this summer or fall.

**Agging & Adult Care**  
OF CENTRAL WASHINGTON

**NEW LOCATION AT**  
270 9TH ST. NE SUITE 100  
EAST WENATCHEE  
509.886.0700

*During this challenging time, caring for our relatives, friends and neighbors takes on new meaning. Agging & Adult Care is here to support communities with services and resources. Please contact us at (509) 886-0700.*

- In-Home Care Options
- Home-Delivered Meals
- Family Caregiver Support
- Help from Volunteers

Agging & Adult Care has expanded its home-delivered meal program for elderly and vulnerable adults. Please call us at 509-886-0700 to request free, home-delivered meals. Donations to the meal program are accepted.

Serving Adams, Chelan, Douglas, Grant, Lincoln and Okanogan Counties

Offices in East Wenatchee, Moses Lake, and Omak 1-800-572-4459 • aaccw.org

*We are here to serve families in Leavenworth, Peshastin, Plain and the entire Upper Valley.*

LOCALLY OWNED

**JONES & JONES ~ BETTS**  
Funeral Home

302 9th St., Wenatchee • 662-2119 or 662-1561  
jonesjonesbetts.com

Honoring the lives of residents in the Valley for over 100 years.  
You can always rely on our dedicated staff.

**BUSINESS & SERVICE Directory**  
Add your business or service to this directory: 548-5286

**DRILLING**  
**Tumwater Drilling and Pump Inc.**  
"Water Treatment Systems Built to Your Individual Problem"  
Free Water Analysis/Estimates

Conveniently located on Hwy 2 across from the Big Y Cafe in Dryden @ 9290 Hwy 2

**Tumwater Drilling & Pump, Inc.**  
548-5361  
www.tumwaterdrilling.com • email info@tumwaterdrilling.com

WATER SOFTENERS, IRON FILTERS, CONDITIONERS, UV FILTERS, REVERSE OSMOSIS, SULFUR, WHOLE HOUSE FILTERS, PREVENTATIVE MAINTENANCE, SERVICE, SALT SALES

**STUMP REMOVAL**  
**Quick 'n Easy Residential Stump Removal**

**STUMPS**  
UNLIMITED

10817 North Road, Leavenworth • (509) 548-8222  
Kim & Rosalie Kozelisky  
Licensed, Bonded, Insured • Cont. #UPPERVE200PI

**EXCAVATION**  
**Complete Excavating Service**

- Power & Water Systems
- Dump Truck & Dozer
- Drainfield Repair
- Free Estimates
- Septic Systems
- Road Grading

(509) 548-3489  
Leavenworth, WA

Upper Valley EXCAVATING  
Licensed - Bonded - Insured

**STORAGE**  
**DOWNTOWN CASHMERE MINI STORAGE**

5x10 - \$60 Per Month  
10x10 - \$80 Per Month  
8x14 - \$90 Per Month

- Secure Timed Keylock System
- Mobile Platform Available
- Burglar Alarm
- Camera Surveillance

**782-8113**  
201 Cottage Ave., Cashmere

Have spare room in your facility?  
Advertise on  
**STORAGE**  
NCWMarket.com

**Due to the COVID-19 virus, all churches in the Upper Valley have suspended Saturday and Sunday services, Sunday School and meetings.**

*Please call or email your church listed below if you need more information. May you take time to pray, rest, meditate and reflect during this time. Stay well, stay strong and stay informed.*

**UPPER VALLEY CHURCH GUIDE** New to our area? On vacation? These churches welcome you!

**TO PLACE INFORMATION IN THE CHURCH GUIDE CALL 548-5286**

**CASHMERE**

**CASHMERE BAPTIST CHURCH**  
103 Apiets Way • 782-2869  
Sunday School 10:00 a.m. - Worship 11 a.m.  
Bible Study, Wed., 7 p.m.  
Pastor Bob Bauer  
Find us on Facebook at Cashmere Baptist Church

**CASHMERE PRESBYTERIAN CHURCH**  
303 Maple Street • 782-2431  
Sunday Morning Worship 10:30 a.m.  
Call for activities: Pastor Charles Clarke  
www.cashmerepres.org

**CASHMERE UNITED METHODIST CHURCH**  
213 S. Division • 782-3811  
Worship & Sunday School at 11:00 a.m.  
Office Hours: Monday - Thursday 10:00 a.m. - 1:00 p.m.  
Pastor Lilia Felicitas - Malana

**CHRIST CENTER**  
Cashmere Assembly of God • 509-782-2825  
Worship Services are available ONLINE ONLY at 10 a.m. Sundays  
All updates on COVID-19 can be found at christcentercashmere.com/cc-updates  
Underground High School Group, ONLINE ONLY at 6 p.m. Sundays  
Lead Pastor, Steve Haney  
Children's Pastor, Andy Robinson  
Congregation Care Pastor, Joyce Williams  
Director of Operations, Pastor Ian Ross  
High School Director, Steffanie Haney

**GRACE LUTHERAN CHURCH**  
Vine & Elberta Streets • 860-0736  
Worship 10:30 a.m.  
Pastor Robert Gohl

**ST. JAMES EPISCOPAL CHURCH**  
222 Cottage Ave. • 782-1590  
Holy Eucharist 9 a.m.  
5th Sunday Morning Prayer 9 a.m.  
Deacon Carol Forhan - 670-1723  
Vicar Rob Gohl - Cell - 860-0736

**EVERGREEN BAPTIST CHURCH**  
5837 Evergreen Drive • 782-1662  
Sunday School - 9:45 a.m.  
Morning Worship - 11 a.m.  
Evening Service - 6:00 p.m.  
Pastor John Smith www.christforcashmere.org

**DRYDEN**

**DRYDEN COMMUNITY CHURCH**  
Hwy 2 at Dryden Ave. • 782-2935  
Sunday School 9:30 a.m. • Worship 10:45 a.m.  
Pastor Steve Bergland

**MID-VALLEY BAPTIST CHURCH**  
8345 Stine Hill Rd. • 782-2616  
Worship Service, 10 a.m., Sunday School, 9 a.m.  
Pastor Mike Moore  
www.midvalley baptist.org

**LEAVENWORTH**

**CASCADE MOUNTAIN BIBLE CHURCH**  
"Where God's Word Remains The Pillar Of Truth"  
11025 Chumstick Hwy • 548-4331  
Sunday School 9 a.m.  
Sunday Worship 10:30 a.m.  
AWANA (Youth Program) Weekly Bible Studies  
Wednesday 6:30 p.m. (school year)  
Pastor Todd James  
www.cmchurch.org

**COMMUNITY UNITED METHODIST**  
418 Evans Street • Leavenworth  
509-548-5619 • Rev. Matt Gorman  
Sunday service 10 a.m.  
www.leavenworthumc.org

**CORNERSTONE BIBLE CHURCH**  
Leavenworth Grange Hall  
621 Front St. • 548-0748  
Sunday Worship 10 a.m.

**CHURCH OF JESUS CHRIST OF LATTER-DAY SAINTS**  
10170 Titus Rd. (across from middle school)  
Church: 548-7667  
Meetings: Sunday - 10:00 a.m.

**FAITH LUTHERAN CHURCH - ELCA**  
"Reconciling Works Congregation"  
224 Benton Street • 548-7010  
Worship 9:30 a.m. w/coffee following  
www.faithleavenworth.org

**FIRST BAPTIST CHURCH OF LEAVENWORTH. SBC**  
429 Evans Street, 509- 470-7745  
Sunday Worship: 11:00 AM  
Website: www.leavenworthbaptist.com  
Email: info@leavenworthbaptist.com

**LEAVENWORTH CHURCH OF THE NAZARENE**  
111 Ski Hill Drive • 548-5292  
Sunday Worship 9:00 a.m.  
Lead Pastor: Andy Dayton  
Youth Pastor, Kent Wright  
www.LCN.org

**SEVENTH DAY ADVENTIST CHURCH**  
10800 Ski Hill Drive • 548-4345  
Saturday Services  
Bible Study 9:30 a.m. • Worship 11 a.m.  
Fred Smith • 860-3997

**SPIRIT LIFE CENTER**  
210 Benton Street • 548-7138  
Sunday Worship 10 a.m.  
Prayer 6 p.m.  
Wednesday Bible Study 6:30 p.m.  
Pastor Russell Esparza

**MONITOR**

**MONITOR UNITED METHODIST CHURCH**  
3799 Fairview Canyon • 782-2601  
Church Service & Sunday School 9:00 a.m.  
Pastor Lilia Felicitas - Malana

**PESHASTIN**

**LIGHT IN THE VALLEY COMMUNITY CHURCH**  
8455 Main Street • 548-7517  
Sunday Worship 10 a.m.  
Pastor John Romine  
www.lightinthevalley.org

**PESHASTIN ASSEMBLY OF GOD**  
School and Lake St. • 548-7523  
Sunday Worship Service 10:30 a.m.  
Bible Adventures for kids at 10 a.m. sharp  
Pastor Jorge Torres

**NEW LIFE FOURSQUARE CHURCH**  
7591 Hwy. 97 • 548-4222  
Sunday Worship, 10 a.m.  
Pastors, Darryl and Mindy Wall  
Email: newlifeleavenworth@gmail.com  
FB page: newlifeleavenworth  
www.newlifeleavenworth.com



## How to Extend the Life of Your Used Car

**(StatePoint)** Nearly 70 percent of all car sales are used vehicles, thanks to the rising costs of new cars and the increasing quality of their used counterparts. While buying a previously owned vehicle makes the best financial sense in a lot of cases, experts say there are some things to keep in mind.

“To keep everyone on the road safe and protect your purchase, all drivers need to stay up-to-date on car maintenance,” says Doug Turner, director of service operations at Byrider, the nation’s largest used car and finance network of dealerships. “This is especially true for those with used cars.”

April is National Car Care Month and to help you extend the life of your used car, the automotive experts

at Byrider are offering the following tips:

- Follow the maintenance recommendations of the manufacturer.
- Caring for a vehicle is similar to caring for oneself -- take preventative steps to help keep your car healthy. Pay special attention to issues, noises or warning signs that could indicate your vehicle needs maintenance. Warning lights on your dashboard are illuminated for a reason. Understand what they mean and address them as-needed.
- Prevent rust and other issues by keeping the interior and exterior of your vehicle clean.
- Use a trusted repair service that hires Automotive Service Excellence (ASE)-certified technicians. This

certification can make a big difference when it comes to quality repairs and maintenance.

- Complete as-needed or at a minimum, an annual inspection, on the vehicle. Keep in mind that different seasons of the year require different inspections and repairs.
- Use quality parts.
- Fill your vehicle with the proper gas. Use premium if the vehicle manufacturer suggests it.
- Regular oil changes will keep your car running as smoothly as possible. Be sure to use the proper oil per the manufacturer recommendations.
- When buying a vehicle, stick to retail dealers that put cars through a detailed inspection process. This will help to ensure a given vehicle’s safety and reliability. At the same time, consider dealers with an attached service department. “Your relationship with the dealership shouldn’t end once you drive the car off the lot,” adds Turner. In the case of Byrider, every car sold comes with a warranty or optional service agreement, as well as discounted parts, labor and service. To learn more, visit byrider.com.

A used vehicle can be a great investment. Extend the life of your car and stay safer on the roads by making smart purchasing decisions and taking a proactive approach to maintenance.

## Swiping payment cards at the pump could put your card information at risk

**(BPT)** - Have you paid for gas recently at the pump where you’ve had to swipe your credit or debit card?

At gas stations across the U.S., criminals are skimming cards and stealing payment card data from consumers paying at older fuel pumps. This is because the majority of fuel stations still use insecure outdoor fuel pumps with point of sale (POS) systems that read the magnetic stripe on the back of a payment card to process the purchase of gas instead of POS systems that use more secure EMV(R) chip card readers.

In fact, the U.S. Secret Service estimates that roughly 20 to 30 skimmers are discovered a week on fuel pumps, with an average of about 80 payment cards copied on it when the skimmers are removed. Stolen payment account information can be subsequently printed onto duplicate credit or debit cards, and used by criminals to make unauthorized purchases at stores and fuel pumps that do not have chip-enabled POS systems - draining a cardholder’s checking or savings account or maximizing their credit card balance. The industry calls this counterfeit payment fraud or counterfeit card fraud.

Currently, counterfeit payment fraud experienced



by fuel merchants at the pump is absorbed by the financial institution that issued the payment card to the consumer.

### That’s about to change.

Fraud dollars may be absorbed by independent and franchise owners of fuel stations on Oct. 1, 2020 if their pumps are not upgraded to process chip cards. Depending on how much fraud a station experiences, it could become a significant burden to station owners.

### But this can be avoided.

For Visa cards, liability for fraud dollars stays with card-issuing financial institutions and does not

shift to station owners if fuel pumps are chip-enabled.

Chip technology is proven to prevent counterfeit fraud. In fact, according to payment company Visa, non-fuel merchants that are chip enabled have experienced a significant 81 percent decrease in counterfeit fraud dollars. However, troubling statistics show only about 7 percent of fuel pumps nationwide are processing chip transactions.

For station owners, there’s no time to waste - contact your hardware or fuel provider for information on how to upgrade your pumps. For consumers, make sure to pay with a chip card at a fuel pump that is chip-enabled. If you’re not sure if the pump is safe, pay inside with your chip card.



**Safe Havens AUTO REPAIR**

- Fast, friendly, competent
- 30+ yrs experience as a technician serving all your automotive needs
- Latest in maintenance, diagnostics & repairs for all makes & models
- Technicians on hand
- Se habla Español

Stop in at 11734 Highway 2, Leavenworth or call Cody at (509) 548-1235

**Tumwater Drilling and Pump Inc.**

**“Water Treatment Systems Built to Your Individual Problem”**

**Free Water Analysis/Estimates**

Conveniently located on Hwy 2 across from the Big Y Cafe in Dryden @ 9290 Hwy 2

**Tumwater Drilling & Pump, Inc.**

548-5361

www.tumwaterdrilling.com • email info@tumwaterdrilling.com

WATER SOFTENERS, IRON FILTERS, CONDITIONERS, UV FILTERS, REVERSE OSMOSIS, SULFUR, WHOLE HOUSE FILTERS, PREVENTATIVE MAINTENANCE, SERVICE, SALT SALES

**Complete Excavating Service**

Power & Water Systems  
Dump Truck & Dozer  
Drainfield Repair  
Free Estimates  
Septic Systems  
Road Grading

**Upper Valley EXCAVATING**

(509) 548-3489  
Leavenworth, WA

Licensed - Bonded - Insured

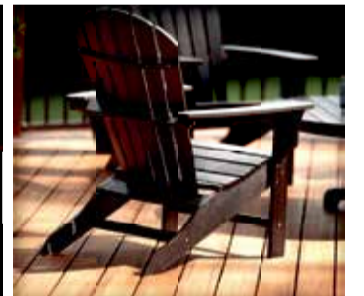
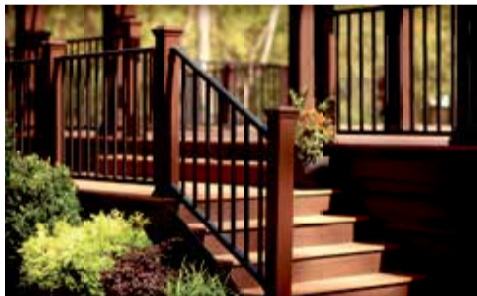
**Get Decked Out This Summer!**



**marson AND marson LUMBER**

A division of TAL Holdings LLC

Featuring **Trex**



**We Help Build Better Communities**

Leavenworth 509.548.5829	Chelan 509.682.1617	Wenatchee 509.663.5154	Cle Elum 509.674.0777	Design Center 509.548.0101
-----------------------------	------------------------	---------------------------	--------------------------	-------------------------------

**marsonandmarson.com** |

**CLEANING YOUR YARD? PROTECT THE AIR!**

DEPARTMENT OF ECOLOGY  
State of Washington

Learn more at:  
[www.ecology.wa.gov/burningalternatives](http://www.ecology.wa.gov/burningalternatives)

**BURNING YARD WASTE POLLUTES THE AIR & CAN CAUSE RESPIRATORY PROBLEMS FOR SOME PEOPLE. CONSIDER THESE ALTERNATIVES TO BURNING:**

- Leave grass clippings on your lawn to add nutrients.
- Create a compost pile for your garden.
- Chip sticks and branches for free mulch.
- Bag it for curbside pickup.
- Contact your local county solid waste for compost and disposal options.



# HOME GARDEN & CAR

## Top Tips to Plant, Grow and Care for a Container Garden

**(StatePoint)** Container gardens are a viable and popular cultivation option, especially for those who have limited sun-exposed spaces or are looking to start small and learn the basics of gardening.

"Containers, whether bought or recycled, are a great place to plant herb and vegetable gardens," says landscape designer, Doug Scott of Redeem Your Ground in Atlanta, Ga. "But to get it right, there are a few things to keep in mind." To help you successfully cultivate a container garden, Scott offers the following pointers:

- Well-drained, not dry or overly wet soil, is necessary for herb and vegetable growth, so using bottom-draining pots with a peat-based potting soil specifically formulated for herbs and veggies will facilitate proper soil drainage and moisture retention.
- The proper container size depends on what you'll be growing. Most small

herbs do well in pots as small as eight inches in diameter, while larger plants may require a gallon pot or larger. For visual interest, consider repurposing items around the house to use as your container, such as an old pail.

- Incorporate a "thriller, filler, spiller" planting approach to maximize space and aesthetic appeal. This means tall focal plants in back, middle layer plants that fill in, and plants that will cascade over the container in front.
- Soil dries out more quickly in container gardens than garden beds, especially if you place containers outdoors in the sun. Perform daily soil moisture checks. You may need to water outdoor container gardens every day – and possibly twice a day – in extremely hot weather.
- Place your container garden where it will get the optimal amount of sunlight – between six and eight hours a day. The beauty of

container gardens is their movability. You can even follow the sun as exposure changes throughout the seasons. Always refer to the care tags on the specific plant to determine a prime location.

- Gardens planted in a container are entirely dependent on you to provide nutrients. Start out with an organic, rich potting soil formulated for container gardens. Then, going forward, fertilize your container every two to four weeks by pouring a nutrient-rich liquid solution directly into the soil.
- Don't forget to reap what you sow. Harvesting will generally help increase yields and prevent plants from outgrowing their containers. For best results, use this five-step method: water plants before harvesting, make clean cuts, keep them clean, dry your harvest quickly and store them away from sunlight and moisture.

More expert advice is available online. Scott has partnered with Exmark, a leading manufacturer of commercial mowers and equipment on a video series for DIY homeowners called "Done in a Weekend." Among the free videos is "Contain Your Enthusiasm," offering tips to help you successfully plant, grow and care for herbs and vegetable container gardens. To view the video, as well as access other videos in the series covering a range of home and garden topics, visit [Exmark.com/DIY](http://Exmark.com/DIY).

There are a few important considerations that every container gardener should know. Be sure you're equipped with the proper tools and knowledge before getting started.



Landscape designer, Doug Scott.

## Top Ways to Lighten Up Your Home Workspace



**(StatePoint)** Many people have found themselves working from home. Whether setting up shop at the kitchen table or creating a complete home office, here are simple hacks to make your new work environment comfortable and productive.

"No matter which room becomes your workspace, proper lighting plays a key role in avoiding fatigue, eye strain and other discomforts," said Jennifer Kis, director of marketing communications, Progress Lighting.

Begin by defining your workspace. Setting up on the kitchen or dining table can work – temporarily. The upside is that it's quick and easy. But these rooms are

typically high-traffic areas, leading to distractions. Plus, you might have to pack up work at mealtimes. Instead, re-purpose a small table and chair and place it in an out-of-the-way spot, such as a stairwell or bedroom corner.

Next, think about lighting. Layering light is a basic technique that should be used in every room, but especially home offices.

"Balance the lighting for different times of day. Natural light for day, layered light for afternoon and task lighting at night," recommends Piper Stromatt, lead designer and partner for Curate Custom Homes. "There are three layers of light to consider: ambient or general light, task lighting and decorative or accent lighting."

Select a location with a good source of ambient light. Natural light is ideal: it diffuses throughout the space, bouncing off walls and ceilings to cut down on glare that can reflect on the computer monitor and the shiny desk surface.

"When selecting ambient light sources, the goal is to illuminate the entire space

without creating undue glare and contrast, which can lead to headaches and eye strain," says Kis. "If possible, avoid using overhead ceiling fixtures as the primary source of lighting. If that's the only option, use a dimmer switch to vary light levels as needed."

Positioning your workspace correctly also helps. For rooms with natural light, place your desk perpendicular to the window, ideally facing north or south so that sunlight doesn't cast shadows at certain times of the day. If an overhead fixture is the only light source, situate your workstation so that the light shines from behind it.

"Make sure your home officesuitsyourperformance under particular lighting conditions," says Stromatt, who recommends the following tips:

- Don't set your monitor in front of the window; the bright background light shining behind the screen causes eye strain.
- Place your chair at least arm's length from the screen so that it can be seen without reading glasses or squinting.
- Add LED tape lighting behind your monitor or under a desk for diffused light.
- Use solar shades to soften lighting and lessen heat.

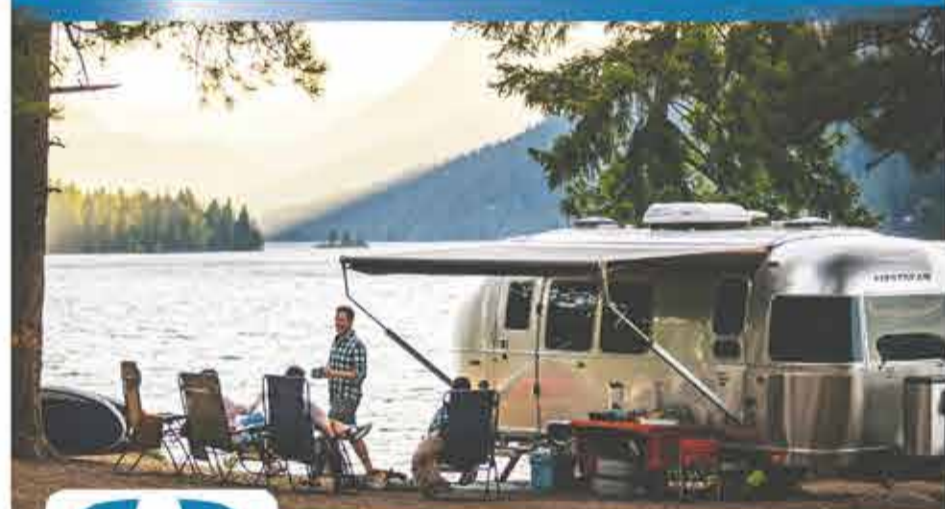
After setting up a glare-free workstation, add task lighting. Use dedicated light sources such as desk lamps for tasks like paperwork and filing. Place direct task lights on the opposite side of the hand you write with to avoid casting shadows onto your work.

Finally, add accent lighting for visual appeal. Frame your workspace with desk lamps or install a permanent fixture on a dimmer switch, such as a pendant hung directly over the desk. Wall sconces can throw light on decorative objects in the room.

For more home tips and lighting inspiration, visit Progress Lighting at [www.progresslighting.com/shop](http://www.progresslighting.com/shop).

Lighting can make or break a home office. Be sure to set yourself up for maximum productivity and comfort.

## ESCAPE WITH AIRSTREAM!



**AIRSTREAM OF SPOKANE**  
7611 E BOONE LN, SPOKANE VALLEY, WA 99212  
[www.airstreamofspokane.com](http://www.airstreamofspokane.com) • 509-534-8599

**Powder Coat it Tough!**

**CASCADE**  
POWDER COATING & METAL FABRICATION

Breathe New Life Into Old Things. You can powder coat that!

[cascadepowdercoating.com](http://cascadepowdercoating.com) | 509-663-0980 | 11 Bridge St, Wenatchee

**DOWNTOWN CASHMERE MINI STORAGE**

5x10 - \$60 Per Month  
10x10 - \$80 Per Month  
8x14 - \$90 Per Month

•Secure Timed Keylock System•  
•Mobile Platform Available•  
•Burglar Alarm•  
•Camera Surveillance•

**782-8113**  
201 Cottage Ave., Cashmere

**SMITHSON INSURANCE SERVICES**

Information You Can Rely On!

Kathy Z. Smithson  
720 Valley Mall Pkwy.  
East Wenatchee  
[smithsoninsuranceervices@gmail.com](mailto:smithsoninsuranceervices@gmail.com)

Let Kathy assist you with answers to your questions about:

- Life Insurance
- Long-term Care
- ALL Medicare Plans
- Health
- Disability and Annuities

**509-884-5195**  
[SmithsonInsuranceServices.com](http://SmithsonInsuranceServices.com)

**Quick 'n Easy Residential Stump Removal**

**STUMPS**

UNLIMITED

10817 North Road, Leavenworth • (509) 548-8222  
Kim & Rosalie Kozelsky  
Licensed, Bonded, Insured - Cont. #UPPERVE200PI

**WESTERN RANCH BUILDINGS**  
STEEL & POST FRAME BUILDING CONTRACTORS

1976 NFBA

Your building can be customized just the way you want!

Sold and erected by an independent, locally owned builder

(509) 884-0555  
[www.westernbuildings.com](http://www.westernbuildings.com)  
4968 Contractors Drive  
East Wenatchee, WA 98802

RESIDENTIAL • COMMERCIAL • INDUSTRIAL • AGRICULTURAL

**Don't Trust Just Anyone For That Once-In-A-Lifetime Investment Sign up now! For Well Drilling!**

Over 12,000 wells drilled  
**NE Washington's leaders in Well Drilling**

- Water Well Drilling
- Rotary Drilling
- Hydro-fracturing
- Licensed Drillers
- Free on-site Estimates

**99% CUSTOMER SATISFACTION!**

**www.foglepump.com**

**SPOKANE • COLVILLE • REPUBLIC • DEER PARK • WENATCHEE**  
509-782-5071 • 1-800-845-3500

**Fogle Pump & Supply, Inc.**  
Lic. #FOGLEPS095L4  
Been serving the Wenatchee area for 38 years

# Community Partners

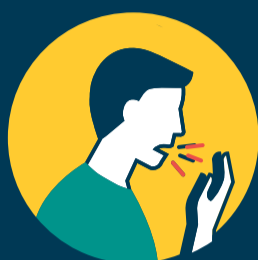
## What are the symptoms of COVID-19?

It's been reported that patients with COVID-19 show a respiratory illness that can go from mild to serious.

### Symptoms may include:



**Fever**



**Cough**



**Difficulty breathing**

Symptoms may appear from 2 to 14 days after being exposed. If you feel ill, stay at home and call the

**Confluence Health hotline at (509) 663-8711**

**Columbia Valley Community Health: (509) 662-6000**

For more information, visit the English-language webpage of the Washington State Department of Health [www.doh.wa.gov/Emergencies/Coronavirus](http://www.doh.wa.gov/Emergencies/Coronavirus)



## Care in the Comfort of Your Home.

### Now offering Telehealth appointments!

Connect with your primary care team in real-time through your smartphone, tablet or computer.

#### AVAILABLE SERVICES

- Behavioral Health
- Minor Rashes or Infections
- Medication Review & Refills
- Nutritional Counseling
- Chronic Care Follow-up
- Hospital Care Follow-up

**Appointments:** 509-548-5815

**Learn more:** [cascademedical.org](http://cascademedical.org)

Please contact your insurance provider regarding coverage.



*Dr. Miranda Raiche, Physician  
Dr. Maxwell Moholy, Clinical Psychologist*



We all need to be reminded to say "Thank you" to all those in the front lines working to keep us safe and healthy, in everyday health and now especially during this time of the COVID-19 Virus.

### Nurses Week is May 6-12

Need A Card of Thanks ? Have a name but no address to send a card? Call us and we will make an ad for you with a name of a nurse that you would like to say "Thank you" to.

#### Deadline:

April 30 for May 6 issues

2 column x 1.5 inch ad

1 paper - Only \$10

2 papers - \$18



### National Hospital Week is May 10-16

Say "Thank you" to our Doctors, Administrators, ED staff, Lab and others. Send us a name or message and we will make the ad for you.



#### Deadline:

May 7 for May 13 issues

2 column x 1.5 inch ad

1 paper - Only \$10

2 papers - \$18

Contact: Carol: 548-5286 or [Carol@leavenworthecho.com](mailto:Carol@leavenworthecho.com)  
Lindsay: 860-7301 or [Adexec1@ncwmedia.net](mailto:Adexec1@ncwmedia.net)

## Shop LOCAL

SUPPORT LOCAL BUSINESSES  
SUPPORT LOCAL JOBS



Shop Online



Purchase Gift Cards



Order Takeout

Brought To You By: CHELAN DOUGLAS Regional Port AUTHORITY

**NCW MARKET.COM**  
CLASSIFIED ADS

**BUSINESS JOURNAL**

**ECHO RECORD MIRROR HERALD**

Place your ad online at [NCWMARKET.COM](http://NCWMARKET.COM) or call 509-548-5286 - Leavenworth Echo/Cashmere Valley Record  
509-682-2213 - Lake Chelan Mirror • 509-689-2507 - Quad City Herald

# CLASSIFIEDS

**PUBLISHER'S NOTICE**  
All real estate advertising in this newspaper is subject to the Fair Housing Act, which makes it illegal to advertise "any preference, limitation or discrimination based on race, color, religion, sex, handicap, familial status or national origin, or an intention to make any such preference, limitation or discrimination." This newspaper will not knowingly accept any advertising for real estate that is in violation of the law. To complain of discrimination call HUD at 1-800-669-9777. The number for hearing impaired is 1-800-927-9275.

**CORRECTIONS:** NCW Media Inc. shall be responsible for corrections to advertisements on the first publication only. The advertiser will be responsible for corrections made thereafter. NCW Media Inc. shall not be responsible for slight changes or typographical errors that do not lessen the value of the advertisement. NCW Media Inc.'s liability for other errors or omissions in connection with an advertisement is strictly limited to the publication of the advertisement in any subsequent issue. No monetary refunds will be given. For more information call (509) 548-5286.



## ORCHARDS & FARMS

**WASHINGTON BROKERS**

We have buyers for your Pear, Apple and Cherry Orchards!

509-669-4500  
information@nwi.net

## FOR RENT



Lake Chelan's newest Marina: Sunset Marina. 40 foot slip. Power, water, waste dump. Parking with coded gate for security. Clubhouse. \$550/month. Slip B10. 808-298-1031.

R. V. Rental Space  
All utilities are included on this beautiful property near Safeway in Leavenworth. Great for motorhome or trailer with pickup. For information, text/call 509-699-9337 or email: [deehappysunshine@aol.com](mailto:deehappysunshine@aol.com)

Also go online and checkout [NCWMarket.com](http://NCWMarket.com)

## STORAGE

Storage Units Available  
Reasonable rates  
Cut Rate Storage  
782-1817  
Office: 107 Railroad Ave.  
Cashmere, WA.

**Advertise**  
**548-5286**  
or  
**782-3781**

## HAPPY ADS

ANNOUNCE IT IN THE CLASSIFIEDS  
AT [NCWMarket.com](http://NCWMarket.com)

**\*HAPPY BIRTHDAY**

**\*CONGRATULATIONS!**

**WILL YOU MARRY ME?**

**\*I'M SORRY!!**

**\*Happy Anniversary**

Only \$15 for 30 days  
includes 3 photos

## LOST & FOUND

Prescription eye glasses, with dark tortoise shell frames and rhinestones on the ear pieces. Lost in Leavenworth. Reward offered if found. Contact: Penny, 509-885-0441.

## HELP WANTED



**Douglas County PUD has an opening for:**  
Journeyman Mechanic  
Wells Dam  
Please see our web site for details  
[www.douglaspudd.org](http://www.douglaspudd.org)

Find the Best Qualified Local Employee in our Classifieds Ads.

Place your ad 24/7 at [www.NCWMarket.com](http://www.NCWMarket.com)

Deadline Monday at noon for the paper  
**Lake Chelan Mirror**  
**Leavenworth/**  
**Cashmere**  
Deadline Tuesday at noon  
**Quad City Herald**

Your ad will appear online and in the newspaper for one low price.

**WHAT'S HAPPENING**

Need to promote your event?  
Have you thought about **NCWMarket.com**  
the best online promotion available

[www.leavenworthecho.com](http://www.leavenworthecho.com) • [www.cashmerevalleyrecord.com](http://www.cashmerevalleyrecord.com)

**Windermere REAL ESTATE**

**Windermere Real Estate/NCW**  
Leavenworth/Lake Wenatchee Specialists

Looking for real estate in the Upper Valley?  
**Give us a call today!**

Carmen Bagdon - 237-2060  
Momi Palmieri - 433-2211  
Geordie Romer - 679-8958  
Allyson Romer - 630-9898

See all available properties at [windermereleavenworth.com](http://windermereleavenworth.com)

## HELP WANTED

City of Brewster  
Employment Opportunity  
Full-time year-round City Water Utility Operator position.  
Duties include: All aspects of Public Works with emphasis on water distribution. This position requires the ability to work outside in adverse weather conditions. Work hours may vary but are anticipated to typically be 40 hours per week, Monday through Friday, from 7:00 AM to 4:00 PM with a one-hour lunch break. Wages: Full-time positions are per Union Contract. Previous experience preferred, but not required. Criminal background check will be required, as will pre-employment drug testing. Random drug testing throughout the employment period may occur. Applicants must have a valid WA State Driver's License. Applications and job description are available at [cityofbrewsterwashington.org](http://cityofbrewsterwashington.org), by calling (509) 689-3464, or picking up at Brewster City Hall. Applications accepted until position is filled, preferably by April 17, 2020. EOE

## HELP WANTED

**Wapato Point Management Company (WPMC)**, at Wapato Point Resort, is seeking a full-time Maintenance Manager. This position is responsible for the maintenance and appearance of the interior and exterior of facilities at Wapato Point Resort. Supervise 10-15 employees, administration of department budget and work closely with all other departments. The Maintenance Manager position requires the ability to communicate effectively, with courtesy and respect toward all individuals. Wapato Point Resort is in Manson, Washington on 116 acres of Lake Chelan shoreline. The resort includes 241 timeshare units served by nine homeowner associations, 85 private homes and 21 full-share condominiums. WPMC has managed the resort for over 40 years and takes great pride in the service and support we provide the resort community. The Maintenance Manager is a full-time, exempt position. Benefits include vacation and paid time off accrual, fully paid medical, dental, vision and life insurance, paid holidays, cell phone allowance and 401(k) retirement plan. Salary is negotiable and depends on experience. Education and Experience: • High school diploma or GED or any combination of education, training and experience that demonstrates the ability to perform the duties of the job. • Excellent customer service skills. • 3-5 years supervisory experience required. • Excellent communication skills both orally and in writing. • Knowledge and experience of appliance, plumbing, electrical, carpentry and mechanical repair. • Knowledge of swimming pool maintenance operations. Experience preferred. • Competent computer skills including MS Office - Word, Excel, Outlook, and the ability to quickly learn internal software programs. Please respond with a cover letter, employment application, and resume if desired. Applications are available at <https://wapatopoint.com/employment/>. Applications can be sent to Susan Stephens, Human Resources Specialist at [susan@wapatopoint.com](mailto:susan@wapatopoint.com) or to Wapato Point Management Company, Attention Susan Stephens, PO Box 426, Manson, WA 98831. Wapato Point Management Company is an equal opportunity employer.

## PUBLIC NOTICES

**IN THE SUPERIOR COURT OF THE STATE OF WASHINGTON IN AND FOR THE COUNTY OF CHELAN**

In the Matter of the Estate of **No. 20-4-00047-04**  
**PAMELA JEAN TITUS a/k/a**  
**PROBATE NOTICE TO**  
**PAMELA JEAN GANN**  
**CREDITORS**  
Deceased.  
RCW 11.40.030  
The personal representatives named below has been appointed as personal representatives of this estate. Any person having a claim against the decedent must, before the time the claim would be barred by any otherwise applicable statute of limitations, present the claim in the manner as provided in RCW 11.40.070 by serving on or mailing to the personal representatives' or the personal representatives' attorney at the address stated below a copy of the claim and filing the original of the claim with the court. The claim must be presented within the later of (1) Thirty days after the personal representative served or mailed the notice to the creditor as provided under RCW 11.40.020(3); or (2) four months after the date of first publication of the notice. If the claim is not presented within this time frame, the claim is forever barred, except as otherwise provided in RCW 11.40.051 and 11.40.060. This bar is effective as to claims against both the decedent's probate and nonprobate assets. Date of first publication: April 29, 2020  
Date of Filing: February 10, 2020  
Personal Representative: Jason Gann  
Attorney for Personal Representatives: Byron J. Moore  
Address for Mailing or Service: Moore Law Firm, PLLC  
1114 N. Mission Street, Suite C2  
Wenatchee, WA 98801  
Attorney for Estate: /s/ Byron J. Moore  
Byron J. Moore, WSBA #43624  
Published in The Leavenworth Echo/Cashmere Valley Record on April 29, May 6, 13, 2020. #87670

## SUPERIOR COURT OF WASHINGTON FOR CHELAN COUNTY

In the Matter of the Estate of **VICTORIA L. ROSENTRER**, Deceased.  
**No. 20-4-00032-04**  
**PROBATE NOTICE TO**  
**CREDITORS**  
(RCW 11.40.030)  
The Personal Representative named below has been appointed as Personal Representative of this estate. Any person having a claim against the decedent must, before the time the claim would be barred by any otherwise applicable statute of limitations, present the claim in the manner as provided in RCW 11.40.070 by serving on or mailing to the personal representative or the Personal Representative's attorney at the address stated below a copy of the claim and filing the original of the claim with the court in which the probate proceedings were commenced. The claim must be presented within the later of: (1) Thirty days after the personal representative served or mailed the notice to the creditor as provided under RCW 11.40.020(1)(c); or (2) four months after the date of first publication of the notice. If the claim is not presented within this time frame, the claim is forever barred, except as otherwise provided in RCW 11.40.051 and 11.40.060. This bar is effective as to claims against both the decedent's probate and nonprobate assets. **DATE OF FIRST PUBLICATION: April 22, 2020**

PERSONAL REPRESENTATIVE: Michael W. Rosentreter

ATTORNEY FOR PERSONAL REPRESENTATIVE: Thomas D. Overcast

ADDRESS FOR MAILING OR SERVICE: OVERCAST LAW OFFICES  
Attn: Thomas D. Overcast  
23 South Wenatchee Avenue, Suite 320  
Wenatchee, WA 98801  
COURT OF PROBATE PROCEEDINGS AND CAUSE NUMBER: Chelan County Superior Court, No. 20-4-00032-04

Attorney for Estate: Overcast Law Offices - NCW, PLLC  
By: /s/ Thomas D. Overcast, WSBA No. 14486  
Attorney for Personal Representative  
Published in The Leavenworth Echo/Cashmere Valley Record on April 22, 29 and May 6, 2020. #87652

**SUDOKU PUZZLE**

**SUDOKU**

**FREE!** Savings include an American Standard High Edge Toilet. FREE! (\$500 Value)

**WALK-IN BATH TUB SALE! SAVE \$1,500**

Backed by American Standard's 140 years of experience  
Ultra low entry for easy entering & exiting  
Patented Quick Drain™ Technology  
Lifetime Warranty on the bath AND installation, INCLUDING labor backed by American Standard  
44 Hydrotherapy jets for an invigorating massage  
Limited Time Offer! Call Today!  
**866-612-7490**  
Or visit [www.walkinbathinfo.com/spm](http://www.walkinbathinfo.com/spm)

		7		5					2
	1		8						6 7
	8			1					
			7	6	5				
4									8
		9	2	4					
			9					7	
3	7			6					2
1			8		7				

© StatePoint Media  
Fill in the blank squares in the grid, making sure that every row, column and 3-by-3 box includes all digits 1 through 9.

**CROSSWORD PUZZLE**

**CROSSWORD**

**FREE!** Savings include an American Standard High Edge Toilet. FREE! (\$500 Value)

**WALK-IN BATH TUB SALE! SAVE \$1,500**

Backed by American Standard's 140 years of experience  
Ultra low entry for easy entering & exiting  
Patented Quick Drain™ Technology  
Lifetime Warranty on the bath AND installation, INCLUDING labor backed by American Standard  
44 Hydrotherapy jets for an invigorating massage  
Limited Time Offer! Call Today!  
**866-612-7490**  
Or visit [www.walkinbathinfo.com/spm](http://www.walkinbathinfo.com/spm)

1	2	3	4	5	6	7	8	9	10	11	12		
13										15			
16										18			
	19												
25	26	27								31	32	33	34
35													
40													
44													
48													
63													
68													
71													

© StatePoint Media

**THEME: ACTORS AND ACTRESSES**

**ACROSS**

- Flowers in the \_\_\_\_\_
- Emergency responders
- Peacock's pride
- Life force in Sanskrit
- Doctor Dolittle, e.g.
- The Beast's problem
- Happen again
- Freudian topic
- In a fitting way
- Hopkins' Lecter to \_\_\_\_\_'s Staring
- McGill's Charlie to \_\_\_\_\_'s Maverick
- Unagi
- Undesirable row
- Stuff in a tray?
- The Tramp's love interest
- Hairy vertebrate
- "Best \_\_\_\_\_ schemes o' mice an' men"
- Be inclined
- City in Belgium
- Debussy's "Clair de \_\_\_\_\_"
- D'Artagnan's weapon, pl.
- Speed on water
- "This \_\_\_\_\_" on a box
- The Chapin School, e.g.
- A \_\_\_\_\_
- Post-roller coaster ride state
- The Coen brothers' "True \_\_\_\_\_"
- Diego
- Deuce topper
- Lamb's mother
- Clark's Rhett to \_\_\_\_\_'s Scarlett
- John's Danny to \_\_\_\_\_'s Sandy
- Continually annoy
- Matterhorn, e.g.
- Cooler climate conifer
- Do like phoenix
- Tiger's peg
- "My Own Private \_\_\_\_\_"
- Thou \_\_\_\_\_, or you have
- Bajillion years
- Article of faith

**DOWN**

- 2020 Easter mo.
- Not kosher
- Meal in a shell
- Occupied, two words
- El Chapo's organization
- "What \_\_\_\_\_ Happened to Baby Jane?"
- "Billy's Harry to \_\_\_\_\_'s Sally
- Investor's asset
- Guarani languages
- Liberal pursuits
- Archipelago unit
- Bovine hangout
- Posterior, anatomically speaking
- Fill with optimism
- Basketball target
- Two heads are better than one, e.g.
- Keaton's Annie to \_\_\_\_\_'s Alvy
- Sweating room
- Hinduism follower
- Knightley's Swann to \_\_\_\_\_'s Sparrow
- Cameron's Fiona to \_\_\_\_\_'s Shrek
- List of options, pl.
- Ancient Greeks' assembly area
- Pretend, two words
- \_\_\_\_\_ ex machina
- Doe, e.g.
- Sales pitch
- Smallest at the clothing store
- Second person of be
- Litiged by twilight
- Related on mother's side
- Avoid, as in taxes
- Designer Bradley
- Osiris' wife
- One third of a three-piece suit
- Welcoming sign
- A Flock of Seagulls' hit, 2 words
- Soreness
- "\_\_\_\_\_ humbug!"
- Kate's Rose to \_\_\_\_\_'s Jack
- "Some Like It \_\_\_\_\_"

**Have products or services for sale?** Don't bury them in EBay or Craig's List or park it by the side of the road.  
**Your most likely buyer lives right here in North Central Washington**

**Join the Digital Age!**

**NCWMarket.com** is a classified advertising service of NCW Media, Inc.  
Publisher of The Leavenworth Echo, Cashmere Valley Record, Lake Chelan Mirror, Quad City Herald & Wenatchee Business Journal

**The good news is:**

- It's available 24/7
- Rates start as low as \$5 per month
- Google says we averaged 5,277 visitors per month last year
- You can have multiple photos even videos
- You can protect your identity until you decide to respond to inquiries, OR
- You can include a map to your business
- You can change the ad anytime you want - as often as you want
- We don't sell your email address or any of your personal information
- Our monthly subscription programs allow you to change your ad entirely at no additional charge

Place your ad now: [NCWMarket.com](http://NCWMarket.com)

## PUBLIC NOTICES

### ADVERTISEMENT FOR BIDS

#### CITY OF LEAVENWORTH WASTEWATER TREATMENT-PLANT IMPROVEMENTS PROJECT

Separate sealed bids will be received by the City of Leavenworth at the City Hall, located at 700 Highway 2 / PO Box 287, Leavenworth, WA 98826, until 2:00 P.M., May 20, 2020, and publicly opened and read aloud at that time.

The CONTRACT DOCUMENTS may be examined at the following locations:

1. City of Leavenworth, 700 Highway 2/ PO Box 287, Leavenworth, WA 98826 (509) 548-5275

2. Varela & Associates, Inc., 601 W. Mallon Ave Ste A, Spokane, WA 99201 (509) 328-6066

3. Various plan centers. Call Varela & Associates or visit [www.varela-engr.com](http://www.varela-engr.com) for list

This work is for the replacement of portions of the City of Leavenworth's South Interceptor Sewer Main. Major elements of work include: replacement of 1,100 LF of 14-inch AC and 15-inch concrete pipe with 18-inch and 21-inch PVC pipe via open cut method; replacement of 1,150 LF of 15-inch concrete pipe with 18-inch Fusible PVC pipe via pipe bursting method; reconnection of existing 4-inch and 6-inch sewer services, earthwork, site restoration, and associated work. See Contract Documents for project requirements and specifications.

The project is located within the City of Leavenworth city limits on rights-of-way and easements.

Proposals must be submitted on the forms provided in the Contract Documents. Bid bonds in an amount not less than 5% of the amount bid are to be made payable to the City of Leavenworth. 100% performance and payment bonds will be required from the successful bidder.

The City of Leavenworth is an equal opportunity and affirmative action employer. Disadvantaged, tribal, minority and women-owned businesses are encouraged to submit bids. All work performed on this project will be subject to prevailing state wage rates. The project is funded by a grant/loan from the United States Department of Agriculture Rural Development program.

Section 746 of Title VII of the Consolidated Appropriations Act of 2017 (Division A - Agriculture, Rural Development, Food and Drug Administration, and Related Agencies Appropriations Act, 2017) and subsequent statutes mandating domestic preference applies an American Iron and Steel requirement to this project. All listed iron and steel products used in this project must be produced in the United States. The term "iron and steel products" means the following products made primarily of iron or steel: lined or unlined pipes and fittings, manhole covers and other municipal castings, hydrants, tanks, flanges, pipe clamps and restraints, valves, structural steel, reinforced precast concrete, and construction materials. The de minimis and minor components waiver apply to this contract.

The City of Leavenworth reserves the right to reject any and all bids, to waive technicalities, and in its sole judgement, accept the bid which it deems is in its best interest. Additional bid acceptance and contract award provisions are specified in the Contract Documents.

Copies of the CONTRACT DOCUMENTS may be purchased at the office of Varela & Associates, Inc., here after referred to as the Issuing Agent, for \$60 per set (non-refundable, see address above). For additional information regarding this project, contact Jeff Moran, at Varela & Associates, Inc., at (509) 328-6066 or [jmoran@varela-engr.com](mailto:jmoran@varela-engr.com).

Published in The Leavenworth Echo/ Cashmere Valley Record on April 29, 2020. #87674

## PUBLIC NOTICES

### SUPERIOR COURT OF WASHINGTON IN AND FOR CHELAN COUNTY

In the Matter of the Estate of **ROBERT MILES**, Deceased

NO. 20-4-00094-04  
**PROBATE NOTICE TO CREDITORS**

The Personal Representative named below has been appointed as Personal Representative of this estate. Any person having a claim against the decedent must, before the time the claim would be barred by any otherwise applicable statute of limitations, present the claim in the manner as provided in RCW 11.40.070 by serving on or mailing to the Personal Representative or the Personal Representative's attorney at the address stated below a copy of the claim and filing the original of the claim with the court in which the probate proceedings were commenced. The claim must be presented within the later of: (1) Thirty days after the Personal Representative served or mailed the notice to the creditor as provided under RCW 11.40.020 (1)(c); or (2) four months after the date of first publication of the notice. If the claim is not presented within this time frame, the claim is forever barred, except as otherwise provided in RCW 11.40.051 and RCW 11.40.060. This bar is effective as to claims against both the decedent's probate and nonprobate assets.

**DATE OF FIRST PUBLICATION: April 15, 2020**

**Personal Representative:** Michael Miles

**Attorney For Personal Representative:** DAVID VISSER ADDRESS FOR MAILING OR SERVICE: OVERCAST LAW OFFICES 23 South Wenatchee Avenue Suite 320 Wenatchee WA 98801

**COURT PROBATE PROCEEDINGS AND CAUSE NUMBER:** Chelan County Superior Court, No. 20-4-00094-0 OVERCAST LAW OFFICES

By: David Visser, WSBA No. 41546 Attorney for Personal Representative

Published in The Leavenworth Echo/ Cashmere Valley Record on April 15, 22, and 29, 2020 #87639

## PUBLIC NOTICES

### IN THE SUPERIOR COURT OF THE STATE OF WASHINGTON FOR KING COUNTY

In the Matter of the Estate of: **Fred W. Hackney**, Deceased

No. 20-4-01707-5 SEA  
**Probate Notice to Creditors** (RCW 11.40.030)

The Personal Representative named below has been appointed as Personal Representative of this estate. Any person having a claim against the decedent must, before the time the claim would be barred by any otherwise applicable statute of limitations, present the claim in the manner as provided in RCW 11.40.070 by serving on or mailing to the Personal Representative or the Personal Representative's attorney at the address stated below a copy of the claim and filing the original of the claim with the court in which the probate proceedings were commenced.

**DATE OF FIRST PUBLICATION: April 15, 2020**

**Personal Representative:** Robert M. Sifferman

**Attorney for Estate:** Robert M. Sifferman Address 2155- 112th Avenue NE Bellevue, WA 98004 Telephone (425) 454-5829

Published in The Cashmere Valley Record/ Leavenworth Echo on April 15, 22, and 29, 2020. #87635

## PUBLIC NOTICES

The claim must be presented within the later of: (1) Thirty days after the personal representative served or mailed the notice to the creditor as provided under RCW 11.40.020 (1)(c); or

(2) four months after the date of first publication of the notice. If the claim is not presented within this time frame, the claim is forever barred, except as otherwise provided in RCW 11.40.051 and RCW 11.40.060. This bar is effective as to claims against both the decedent's probate assets and non-probate assets. DATE OF FILING WITH COURT: March 12th, 2020.

**Robert M. Sifferman** Personal Representative Attorney for Estate

Address 2155- 112th Avenue NE Bellevue, WA 98004 Telephone (425) 454-5829

Published in The Cashmere Valley Record/ Leavenworth Echo on April 15, 22, and 29, 2020. #87635

## THE OUTDOOR REPORT



Courtesy John Kruse

### National Wildlife Refuge boundary sign.

## More Fishing & Hunting Is Coming To Washington

By JOHN KRUSE

On April 8, David Bernhardt, the Secretary of the Interior, announced his intention to open up more than 2.3 million acres across America for increased fishing and hunting opportunities. This would occur as early as this fall on 97 national wildlife refuges and 9 national fish hatcheries managed by the U.S. Fish and Wildlife Service (US FWS).

This is part of a push by President Donald Trump's Administration and the US FWS to open more access to the refuges. With this addition hunting will be allowed at 399 refuges and fishing permitted at 331.

The announcement garnered applause from the CEOs of several conservation organizations to include the Rocky Mountain Elk Foundation, the Coastal Conservation Association and the National Wild Turkey Federation. This week, we take a look at the nine refuges and fish hatcheries where new fishing and hunting may take place in Washington State.

**National Wildlife Refuges:**

**Turnbull National Wildlife Refuge:** Located south of Cheney in Eastern Washington, 231 acres on the Upper Turnbull Slough currently open for youth hunting one weekend in September would open up for additional youth hunting opportunities in October and November.

**Willapa National Wildlife Refuge:** Situated in Southwest Washington in Pacific County, the region has long been one of the premier places to hunt Roosevelt elk and black-tailed deer. Under this proposal, new acreage on the refuge would open up for hunting. Specific areas include 2,181 acres at Lead-better Point, 396 acres in the South Bay Unit and 143 acres at the Nemah Unit to allow elk and deer hunting for the first time.

**National Fish Hatcheries:** Fish hatcheries operated by the US FWS seem like unlikely places to fish or hunt, but the land these hatcheries sit on often encompasses a great deal of acreage outside of the actual hatchery itself.

**Abernathy Fish Technology Center:** Bank fishing for salmon, steelhead and trout would open for the first time along a portion of Abernathy Creek owned by this Center in Cowlitz County.

**Leavenworth National Fish Hatchery:** The US Fish and Wildlife Service wants to open up migratory bird, upland game

and big game hunting on this complex for the first time. This proposal though is a real head scratcher. There are several hundred acres adjacent to the fish hatchery in Leavenworth and there is trail system there used by hikers and wildlife watchers. These trails near the Icicle River are also popular with tourists who come here to ride horses or go on winter sleigh rides with Icicle Outfitters which has a longstanding concession contract to operate here. This, and the fact there are homes and a retreat center nearby, make this a very unlikely hunting area.

I spoke with Jim Craig, the hatchery complex manager. He told me, "We do have small areas at the Leavenworth and Entiat Fish Hatcheries open for salmon fishing at times but there are no areas suitable for hunting except for a small amount of land we have at Snow and Nada Lakes in the Alpine Lakes Wilderness. Even this land is essentially just the shoreline of the lake and its already open (for grouse hunting and for the September High Buck Hunt)".

As for additional opportunities, Craig agreed the grounds around the hatchery are not appropriate for hunting and won't be opening for that activity. In Craig's words, the increased opportunities promised by the Dept. of Interior at his hatchery complex in North Central Washington are "Much ado about nothing."

**Little White Salmon And Spring Creek National Fish Hatchery:** Lands near these hatcheries in South Central Washington could see hunting for the first time for everything from crow and grouse to bobcat, deer, elk, bear and turkey. When it comes to the Little White Salmon, the US FWS wants to open 114 acres of hatchery-owned lands west of Cook-Underwood Road. Due to safety concerns hunting will be allowed only with shotgun, bow, and arrow. As for Spring Creek, some 50 acres of hatchery-owned land in the Big White Ponds Area west of State Route 141 would open for hunting.

**Willard National Fish Hatchery:** According to the US Fish and Wildlife Service, Sport fishing would be allowed for the first time through access to some 600 feet of bank fishing along the west bank of the White Salmon River located 1400 feet downstream of the Cook-Underwood Bridge.

Do you want to give your input to the Department of Interior about these proposed changes? You can do so by going to <https://www.regulations.gov/document?D=FWS-HQ-NWRS-2020-0013-0001>. Comments will be accepted until June 8.

### SUPERIOR COURT OF WASHINGTON COUNTY OF CHELAN NO. 20-2-00073-04

**ROBISON ESTATE, LLC**, a Washington limited liability company,

Plaintiff,

vs.

THE HEIRS AND DEVISEES OF CALVIN RICHARDSON, deceased; THE HEIRS AND DEVISEES OF ELLA RICHARDSON, deceased; and ALL OTHER PERSONS OR PARTIES UNKNOWN, claiming any right, title, estate, lien or interest in the real estate described in the complaint herein,

Defendants.

**STATE OF WASHINGTON** to: THE HEIRS AND DEVISEES OF CALVIN RICHARDSON, deceased; THE HEIRS AND DEVISEES OF ELLA RICHARDSON, deceased; and ALL OTHER PERSONS OR PARTIES UNKNOWN:

You are hereby summoned to appear within sixty days after the date of the first publication of this summons, to wit, within sixty days after the 1st day of April, 2020, and defend the above entitled action in the above entitled court, and answer the complaint of the plaintiff Robison Estate, LLC, and serve a copy of your answer upon the undersigned attorneys for plaintiff Jeffers, Danielson, Sonn & Aylward, P.S., by Michelle A. Green, at their office below stated; and in case of your failure so to do, judgment will be rendered against you according to the demand of the complaint, which has been filed with the clerk of said court.

Under RCW 7.28.010, an action to quiet title may be maintained by any person in the actual possession of real property against the unknown heirs of a person known to be dead, or against any person where it is not known whether such person is dead or not, and against the unknown heirs of such person, and if it shall thereafter transpire that such person was at the time of commencing such action dead the judgment or decree in such action shall be as binding and conclusive on the heirs of such person as though they had been known and named.

DATED this 24th day of March, 2020.

JEFFERS, DANIELSON, SONN & AYLWARD, P.S.

By: MICHELLE A. GREEN, WSBA # 40077 Attorneys for Plaintiff

PO Box 1688 Wenatchee, WA 98807-1688 (509) 662-3685/ (509) 662-2452

Published in The Cashmere Valley Record/ Leavenworth Echo on April 1,8,15,22, 29, and May 6, 2020. #87570

Pocket some cash by selling your used Appliances with a classified ad.

Place your ad 24/7 at [www.NCWMarket.com](http://www.NCWMarket.com)

Your ad will appear online and in the newspaper for one low price.

Deadline Monday at noon for the paper **Lake Chelan Mirror Leavenworth Cashmere**

Deadline Tuesday at noon for the paper **Quad City Herald**



## AMBUSH AUTOMOTIVE BUYERS

Our site is promoted across North Central Washington giving you exposure to your primary potential local buyers. Your listing will continue to run for 12 months or until you cancel it



Don't just 'park' your car on the side of the road with a 'For Sale' sign on it!

'Park it' on

**NCWMarket.com** for one low \$25 fee!

Fee includes:

- Up to 3 photos of your vehicle
- Video • Unlimited description
- Google Map to your location (you can opt out)
- Privacy Link (interested buyers contact you through the site protecting your identity)