



Cascade School District Develops a Strategic Framework

BY MARLENE FARRELL

Continuous Student Development. These three words represent Cascade School District's identity and the essence of the 49-word mission statement, developed almost a decade ago. Many people connected to the district – staff, students and families – know these words and take them to heart. In the beginning of 2020, superintendent Tracey Beckendorf-Edou tasked herself, the school board and others to move to the next step. She said, "It's time to answer, *Where are we going based upon that foundation?*" The district needed to define its values within the context of a Strategic Framework. "Strategic planning establishes the ability to set priorities and match resources to opportunities, leads to action while holding the district accountable to stakeholders, and encourages an increased level of commitment to the district and its goals," said Gene Sharratt, retired Executive Director for the Association of Educa-

tional Service Districts, and a thought partner for Beckendorf-Edou. Starting in fall 2019, for the first six months of Beckendorf-Edou's tenure as superintendent, she went on a listening tour, both in-person and then virtually as that became necessary. She listened to student groups, staff, parents and community members. Consultant and CSD parent, Colin Brine of Be Clearly, helped analyze the data and pull out the reiterated themes. These became the values central to the completed Strategic Framework, which can be found on the left menu here: www.cascadesd.org/domain/50. Specifically, the values are:
1) Every Student;
2) Artful Creativity;
3) Quality Education;
4) Connected Relationships;
5) Inclusive Diversity; and
6) The Outdoors.
Quality Education would likely be a priority of every school district. Some of the other values, however,

are uniquely tied to CSD. Every Student, for instance, means each person is treated "as an individual so that learning is personal to each and every student." This is the proud reality of a small school district like CSD. While a larger district might hope to individualize learning, it is more difficult. "Artful Creativity came up again and again," said Beckendorf-Edou, referring to her listening tour. The arts, recognized as important for learning, innovating, performing and inspiring, will be connected to strategies for district growth. "Having a core value of the Outdoors is very unusual for a school district, but perfectly reflects the beautiful location in which our communities' children have the opportunity to grow up and explore," said Beckendorf-Edou. District strategies will increase the utilization of the outdoors for learning, physical activity and applied studies.



Recognizing the beauty of our environment is a key element of Cascade School District's strategic plan to engage students in outdoor activities and learning about the natural environment.

Deriving from those values are the four parts of CSD's vision:
1) Prepare each student for secondary success;
2) Create opportunities for whole child growth;
3) Recognize each student as an individual and
4) Engage students in outdoor learning.

The vision yields strategies of implementation, which can evolve as stakeholders see fit.

Some newer initiatives serve as great examples, including the collaboration with the Methow Arts Alliance for elementary art classes and the partnership with Cascade Medical for a school-based clinic.

These programs help meet students' individual needs and create whole child growth.

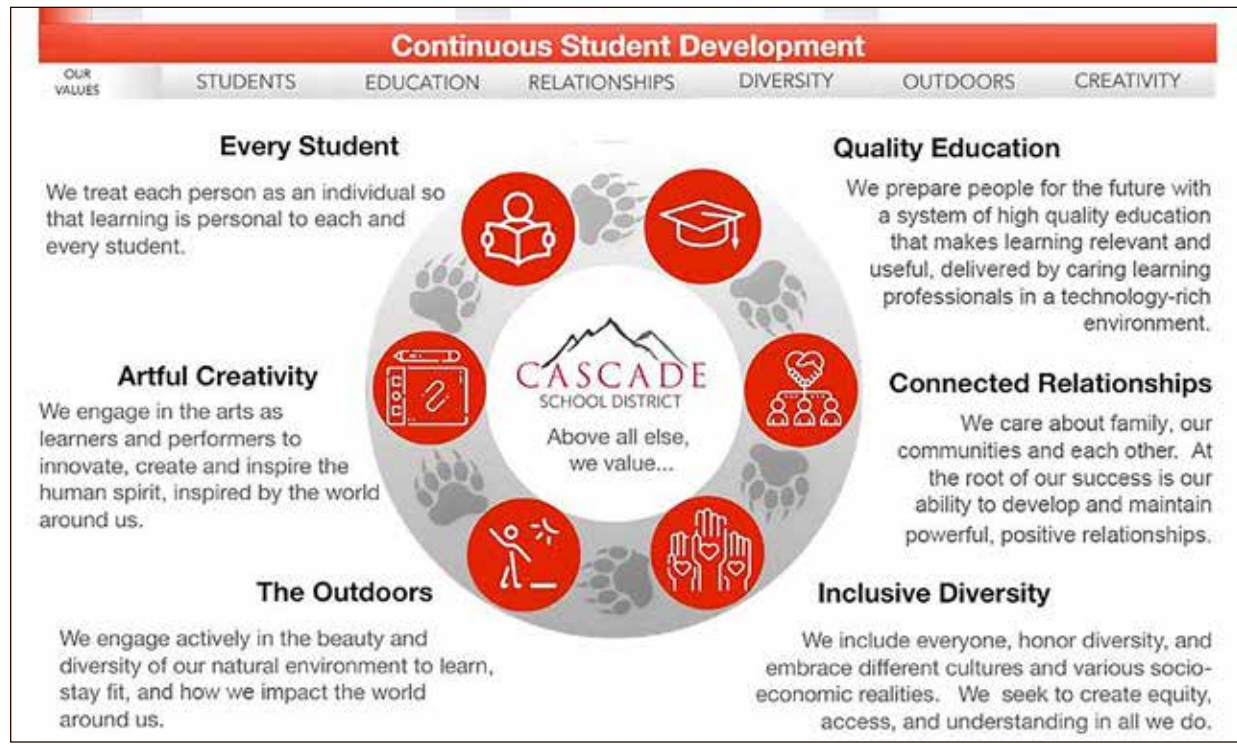
Beckendorf-Edou also spoke of the district's trajectory toward improved bilingual access, support and outreach, starting with having bilingual secretarial staff at most of the schools. This is critical for the individual needs of Spanish-speaking students and families. Beckendorf-Edou chose to accom-

plish the strategic framework in her first year. Steve McKenna, former CSD superintendent, served as another thought partner during this process. McKenna explained, "It is impossible to develop and sustain a results-oriented culture unless we are clear about the core of our work (mission), about the kind of school we're seeking to become (vision), and the commitments we need to make (values).

"The quality of these building blocks will be directly related to the quality of leadership, collaboration and staff development in the future. Change is constant and often destabilizing, such as the effects of a pandemic. But an organization based on strong building blocks, with everyone pulling in the same direction, can weather any storm."

The completed Strategic Framework serves as a touchstone for all that comes next.

"As we develop our strategies, grounded in our mission, values and vision, we can always circle back to ask ourselves how what we are doing aligns and exemplifies what we, our students, and our communities believe are important," said Beckendorf-Edou.



Governor Jay Inslee and challenger Loren Culp spar over policy

BY BILL FORHAN

The only gubernatorial debate occurred last Wednesday. There were some key moments in the debate that reflect the clear difference in approach between the Democrats and Republicans.

Culp opened the debate saying we had a leadership crisis in Washington state. He pointed out that while other people around the state have been harmed financially in the last few months the Governor accepted a pay raise saying he had no control over that.

Culp said he found it amazing that while the governor can issue executive orders that effect your pay and your job, he cannot do the same when it comes to stopping his pay raise.

Governor Inslee said we had

already accomplished so much together in the areas of improving mental health care, establishing the best family leave program and highest minimum wage program in the country. We've accomplished so much in improving education and programs for clean energy. He ended his opening remarks by asking if we were going to step up to fight the COVID pandemic or are we going to belittle it, ignore it or surrender to it. Inslee said he believes strongly that we need to beat this into the ground.

The first question posed by the debate panel challenged the candidates on how they would handle the COVID pandemic.

Culp said he has never said not to practice good safety practices regarding the wearing of masks,

but he believes firmly in individual freedom. He said he didn't believe that a single barber cutting the hair of a single customer can't protect his customer while an abortion clinic, a marijuana store or big box stores can allow hundreds of customers into their facility based on the decision of one person sitting in the governor's office. As governor, I would bring in the best doctors and have them explain how to stay safe then allow the citizens to take the steps they believe were necessary to protect themselves.

Inslee said his program is saving lives and that is the primary responsibility of the government. He said we are working to reopen businesses. He follows the Constitution and to date no court has struck down the actions he has taken.

In response to a question about Boeing moving some of its production to North Carolina, Inslee said Boeing owes it to the people of Washington to come back when the economy improves.

Culp took the opportunity to explain that Inslee has no private sector experience. He does not understand how his policies have impacted the businesses in the state. Washington is not a business-friendly state. Culp said he has built a business from the ground up and under his leadership Washington will become much more friendly to the businesses that create the jobs.

In a debate over Culp's inexperience working with large companies, Culp said this governor thinks he is the leader of everyone. He thinks he is the leader of our companies, our

families and our children. His job is to run the executive branch of the government not our lives.

"Governor Inslee held up his right hand and promised to uphold the Constitution.. He is failing.. Article 1, Section 7 says that no citizen shall be disturbed in their private affairs. I think that we have been disturbed in our private affairs quite a bit by this governor."

Culp challenged the governor on his track record on mental health. He said mental health care in this state is a joke. Governor Inslee has had 8 years to address the problems and he has done nothing. He lost certification for Western State Hospital, the state mental health care facility, during his term.

SEE GUBERNATORIAL DEBATE ON PAGE B1

During this difficult time support your neighbors

Most local businesses offer curbside service or delivery

Inside The ECHO this week

Section A	Section B	Inserts
Breast Cancer	Opinions..... B1	Dan's Food Market
Awareness Month.....2	Classifieds.....B2-B3	Safeway
Community Calendar.....3	Regional News..... B4	
Neighbors.....4		



215 14th St. • P.O. Box 39,
Leavenworth, WA 98826
Phone: 509-548-5286
www.leavenworthecho.com



Honoring Breast Cancer Survivors

Protect Your Health During Cancer Treatment

STATEPOINT

Cancer can be a difficult and overwhelming diagnosis, and if you have cancer or are undergoing cancer treatment, your top priority is to get healthy. After your cancer diagnosis, there are many new things you might need to learn and manage.

The Centers for Disease Control and Prevention and the National Blood Clot Alliance want you to protect your health by understanding your risk for dangerous blood clots, because cancer and some cancer treatments can increase your risk.

About 900,000 people in the U.S. each year are affected by blood clots, and about one in five of these blood clots are associated with cancer.

The risk for a blood clot is greatest in the first few months after cancer is diagnosed.

Some cancers pose a greater risk for blood clots, including cancers involving the pancreas, stomach, brain, lung, uterus, ovaries and kidneys, as well as blood cancers such as lymphoma and myeloma.

The higher your cancer stage, the greater your risk for a blood clot.

The type of cancer treatment you receive may increase your risk for blood clots too.

Treatments involving hospitalization, surgery, chemotherapy, hormonal therapy, catheters placed in your veins, and some other therapies can increase your blood clot risk.

Know the Signs and Symptoms of a Blood Clot

Blood clots occur most often in the legs or arms, and symptoms include:

- Swelling
- Pain or tenderness not caused by an injury
- Skin that may be warm to the touch, red or discolored
- Blood clots in your legs or arms can travel to your lungs, which can be deadly.
- Symptoms of blood clots in your lungs include:
 - Difficulty breathing
 - Chest pain that worsens with a deep breath
 - Coughing up blood
 - Faster than normal or irregular

heartbeat

Contact your cancer doctor immediately if you experience any blood clot symptoms.

A Plan to Protect Your Health

As you take steps to preserve your health, make blood clot awareness part of your care.

Know your risks for blood clots, and discuss these risks with your cancer doctor.

• Stay alert for any signs or symptoms of blood clots after surgery or treatment in an outpatient clinic.

Contact your cancer doctor right away if you experience any of these signs or symptoms.

- Work with your cancer doctor

and make a plan to protect yourself against blood clots that is specific to your personal medical history and treatment.

Visit www.stoptheclot.org/spreadtheword/cancer for more information.

If you have cancer or are undergoing cancer treatment, protect your health. Know your risk for blood clots and talk to your doctor if you experience any blood clot signs or symptoms.

CORRECTION

Wenatchee Cancer Care updated website is * Cancer Care of NCW, Inc., Our House, Wenatchee: 663-6964 or email: cancare2@nwi.net

Living with Anti-Estrogen Medicines

Breast cancer can be triggered by the hormone estrogen. Because of this, many women take anti-estrogen medicine to prevent breast cancer, treat it, or prevent it from coming back.

There are two types of anti-estrogen medications: estrogen blocking agents and estrogen production inhibitors. Tamoxifen (Nolvadex®) is an estrogen blocker.

Tamoxifen prevents estrogen from binding to breast tissue. It is used by itself or combined with other medicines both to treat breast cancer and avoid its recurrence in high-risk women. Another type of anti-estrogen medicine works by reducing estrogen production inside the body.

Less estrogen means less potential to stimulate cancer cells lurking in breast tissue. In women who have gone through menopause, a particular enzyme called aromatase is responsible for creating estrogen.

Medications that interfere with aromatase are called



Ask...

Dr. Louise

aromatase inhibitors.

Aromatase inhibitors like anastrozole (Arimidex®) and letrozole (Femara®) are often prescribed for 5 years or more after initial breast cancer treatment to decrease the risk of recurrence.

The most common adverse effects of anti-estrogen medicines are fatigue, weight gain, dry skin and hair, vaginal dryness and discomfort, hot flashes or night sweats, and aching muscles or joints.

One way to combat dry skin and hair is to eat a “good fat” diet with olive oil like in the Mediterranean diet or coconut oil in place of vegetable oil or butter.

I’m not a fan of the taste of olive oil, so I use avocado oil instead. The tall glass bottle of avocado oil at Costco is a great value.

Hot flashes and night sweats are common side effects of taking tamoxifen or

aromatase inhibitors.

Unfortunately, these types of hot flashes from the medicines don’t seem to respond to soy or supplements containing black cohosh like Remifemin® or red clover.

Remifemin® and other herbal products sold for menopausal symptoms like hot flashes can act like estrogen in breast tissue. This is precisely what you DON’T need if you are concerned about your risk of breast cancer.

Fortunately, some prescription medicines can relieve menopausal symptoms without estrogen, like the anti-depressants venlafaxine and citalopram, and gabapentin, a drug that relieves seizures and nerve pain.

Nearly half of women taking an aromatase inhibitor suffer from aching muscles or painful joints.

Glucosamine may offer relief and has no significant side effects; it can also be added to other medicines without causing problems. I recommend using glucosamine powder

twice daily, because it is less expensive and better absorbed than taking the pill form.

Allow 4-6 weeks of taking glucosamine to see the full effect before deciding if it’s helping you.

Another option for aches and pains is Tylenol Arthritis® Extended Relief, which lasts twice as long as Tylenol® Extra Strength.

Try taking two of the 650mg tablets twice daily every day for at least a week.

Other muscle aches options include anti-inflammatories like ibuprofen (Motrin-IB), naproxen (Aleve®), and fish oil capsules. Cannabidiol (CBDs) extracts sold in health food stores are made from hemp oil. CBDs contain less than 0.3% THC and may provide relief without risking a positive THC test.

If these don’t help, please talk to your doctor. People differ widely in how drugs can affect them, and a different medicine could make a huge difference.

Here are 5 Tips for Taking

Anti-Estrogen Medicines:

1. Try a “good fat” diet. To help relieve dry skin and hair, switch from a “low-fat” to a “good fat” diet like the Mediterranean diet.

“Good fats” include coconut, avocado, and olive oil. Taking a fish oil supplement may also help.

2. Avoid soy. Don’t take concentrated soy products or herbal supplements marketed for menopausal symptoms.

Although much weaker than prescription-strength estrogen, these alternatives have similar effects on breast tissue and should be avoided by women at risk for breast cancer.

3. Keep moving. Physical activity discourages weight gain, boosts your mood, and may reduce the muscle aches and joint pain experienced by nearly half of women who take an aromatase inhibitor like anastrozole or letrozole.

If you notice that your muscles or joints ache, don’t

blame old age; it may be your medicine.

Glucosamine powder, Tylenol® Arthritis (650mg tablets), Aleve® (naproxen), Motrin-IB (ibuprofen), fish oil capsules, or even CBD elixirs can help you stay more active.

4. Talk to your doctor. For hot flashes and night sweats, prescription medicines like the anti-depressants venlafaxine or citalopram, or the anti-seizure medicine gabapentin may help.

5. Speak UP. Talk to your doctor if your muscles or joints hurt. There are other medicines available for breast cancer prevention that you may tolerate better.

Dr. Louise Achey, Doctor of Pharmacy, is a 40-year veteran of pharmacology and author of *Why Dogs Can’t Eat Chocolate: How Medicines Work and How YOU Can Take Them Safely*.

Check out her NEW website TheMedicationInsider.com for daily tips on how to take your medicine safely.

© 2020 Louise Achey

The Washington Outdoors Report

The Big Bass Tournament that wasn't



A seven-pound walleye caught by the author at Potholes Reservoir.

PHOTOS AND STORY
BY JOHN KRUSE

Johnston is my best friend of 40-plus years. We met bass fishing as kids and have never stopped fishing together since that time.

The two of us had been practicing this spring and summer to fish the Berkley Big Bass Tournament at Potholes Res-

ervoir, scheduled to happen October 3rd.

Seven hourly first place winners using only Berkley baits and Abu-Garcia rods or reels would receive a \$3,000 check and one of those winners would get the keys for a new bass boat valued at \$42,000!

Unfortunately, that tourna-

ment was cancelled a few weeks ago but Rusty and I decided to fish that day as if we were participating in the tournament. Launching from the state park in the morning, we saw the lake was as crowded with boats as if it were a tournament day.

There were probably close to 100 boats on the water full of anglers going after everything from bass to walleye to crappie to trout.

Much to my surprise, both the Potholes State Park campground and MarDon Resort a short distance away were completely full of campers enjoying the beautiful fall weather.

Rusty and I had marked several promising spots not far from Potholes State Park and fished those first.

However, after two and a half hours all we had to show for our efforts was an 8-inch fish and a lost Abu Garcia rod and reel that went over the side of the boat by accident. Not an auspicious start... Even for an imaginary tournament!

We decided to make a move. I had watched a lot of videos on YouTube of anglers fishing this lake in October and knew a spot where two of them had hooked into good bass.

Arriving there Rusty hooked into a solid three-pound largemouth bass on his first cast. After that, the skunk was off and we started to catch fish, a mix of largemouth and smallmouth.

About an hour into this we located a promising shelf under the water that dropped from seven to 17 feet.

Figuring there would be bass there we cast our crankbaits and for the next two hours we got into some of the best fishing we’ve enjoyed for years!

We lost count of how many largemouth and smallmouth bass we caught. It was cast, catch, release and then reel another one in. Better still, there were plenty of good fish here too.

We caught four more bass in the three-pound class, the largest being 3.5 pounds. Good enough for one of those \$3,000

checks we were hoping for and a shot at a bass boat? No, it wasn’t, but that largest one might have gotten us a third-place hourly finish and a \$500 check (along with some bragging rights).

Speaking of bragging rights, we earned those too.

In this same drop off area I hooked into something that I instantly knew was very, very big.

I thought it was a 5 to 6-pound smallmouth bass at first, but when it came to the surface, we saw it was no bass, it was a walleye and a monster too!

Rusty netted the fished, weighed it and announced its weight at 7.1 pounds, a personal best for me. Then, just to put a little icing on the cake, we caught another 4.5-pound walleye which went home with Rusty for dinner.

The lost rod and reel? The flailing and fruitless efforts of the morning? All forgotten during an afternoon of fishing that had two 56-year old men as giddy with enthusiasm as the teenage boys they once were catching a limit of fish out of Lake Sammamish in Western Washington.

As for the Berkley Big Bass Tournament? That’s been rescheduled for May of 2021.

In the meantime, Potholes Reservoir is fishing very well right now for both bass and walleye. If you are looking for some good action, or maybe for a cast & blast getaway with ducks or pheasant in the morning and fishing in the afternoon, this lake located between Moses Lake and Othello could be a very good bet!

John Kruse - www.northwesternoutdoors.com and www.americaoutdoorsradio.com



Rusty Johnston with a nice 3-pound largemouth bass.

JOE BROWN
J.C. BROWN LAW OFFICE
200 APLETS WAY, CASHMERE
782-1111
BUSINESS, REAL ESTATE,
ESTATE PLANNING, AND PROBATE

COMMUNITY BULLETIN BOARD

Local, Regional Community News & Events

Who: Any non-profit 501(c)-(3) group, person(s). Must submit full name and phone number.
What: Items pertaining to local events that are free or **maximum charge of \$100 fee.**
Where: Email to: reporter@leavenworthecho.com or reporter@cashmerevalleyrecord.com
 Or fill out the online form at: LeavenworthEcho.com or CashmereValleyRecord.com

Another way to advertise your News & Events

Go to: www.NCWMARKET.COM • 247
 Choose your category and pay for Print & Online at one time
 For more information on any of these items. 509-548-5286 or classifieds@leavenworthecho.com

THE LEAVENWORTH ECHO

© 2020 NCW Media, Inc.
 215 14th St., P.O. Box 39
 Leavenworth, WA 98826-0039
 Phone: 509-548-5286
 Fax: 509-548-4789

website:
www.ncwmarket.com
www.leavenworthecho.com
e-mail:
echo@leavenworthecho.com

Publisher
 Bill Forhan • 509-548-5286
publisher@leavenworthecho.com

Reporter/Photographer
 509-548-5286
Reporter@leavenworthecho.com

Advertising Sales Manager
 Carol Forhan
 509-548-5286 • Ext. 6513
carol@leavenworthecho.com

Creative Services
Echoads@leavenworthecho.com

Front Office
Classified / Legal Notices
Classifieds@leavenworthecho.com
 Online ads at NCWMARKET.COM

Circulation for all NCW Media, Inc. newspapers.
 1-509-293-6780
circulation@lakechelanmirror.com

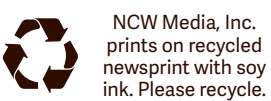
DEADLINES:
 Calendar Listings: Noon, Friday
 News Submissions: Noon, Friday
 Letters to the Editor: Noon, Friday
 Display Advertising: Noon, Friday
 Legal Notices: Noon, Friday
 Classified Ads: Noon, Friday

SUBSCRIPTIONS:
 In Chelan County (yearly) \$40.00
 \$5.00 to include online subscription
 In State (yearly) \$40.00
 Out of State (yearly) \$52.00
 Online E-edition only \$40.00

The Leavenworth Echo does not refund subscription payments except to the extent that it might fail to meet its obligation to publish each week, in which case the cost of the issues missed would be refunded as an extension. Subscriptions may be transferred to another individual or organization. 1-509-293-6780

SERVICES:
Back Issues are available up to one year after publication for a fee.
 Archive Research: \$25 per hour

The Leavenworth Echo (USPS 308 160) is published every Wednesday by NCW Media, Inc. 215 14th St., Leavenworth, WA Telephone: 509-548-5286. Fax: 509-548-4789. Periodical postage paid at Leavenworth, Wash. (and additional mailing offices) Postmaster: Send address corrections to: The Leavenworth Echo, P.O. Box 39, Leavenworth, WA 98826-0039



Letters policy

The Leavenworth Echo welcomes letters to the editor. All letters must be accompanied by the author's name, a home address and a daytime phone number (for verification purposes only). Letters may be edited for length, clarity, accuracy and fairness. No letter will be published without the author's name. Thank you letters will only be printed from non-profit organizations and events. We will not publish lists of businesses, or lists of individual names. Email your letters to Publisher@leavenworthecho.com.

Corrections

The Leavenworth Echo regrets any errors. If you see an error, please call 509-548-5286. We will publish a correction on this page in the next issue.

All events and meetings are cancelled until further notice. Contact the organization listed for update information.

AA Meeting Schedule

Information numbers for AA: The phone number to call for the Zoom link to Leavenworth AA meetings is 541-480-8946
 The phone number to call for the Zoom link to Leavenworth Alanon meetings is 509-548-7939 509-548-1627, 548-4522, 664-6469, 425-773-7527, 1-206-719-3379

Sunday, 9 a.m., Leavenworth Senior Center, 423 Evans St.
Sunday, 7 p.m., Leavenworth Senior Center, 423 Evans St.
Tuesday, noon, First Baptist Church, 429 Evans St.
Tuesday, 7 p.m., Light in the Valley, 8455 Main Street, Peshastin
Wednesday, 7 p.m., Leavenworth Senior Center, 423 Evans St.
Thursday, noon, First Baptist Church, 429 Evans, Leavenworth
Friday, 7:30 p.m., Plain Community Church, 12565 Chapel Dr., Plain
 Information number for Alanon: 509-548-7939

Alanon Meeting Schedule: Monday, 7 p.m., United Methodist Church, 418 Evans St.

Celebrate Recovery
 We will be meeting via Zoom weekly on Fridays at 6:30 p.m. Please email celebraterecoverylcn@gmail.com for more information.

Community Calendar

Wednesday

Peshastin Water District, 5:30 p.m. at the Leavenworth PUD office, Contact Steve Keene, 548-5266. (2nd Wed.)
Prostate Cancer Awareness & Support Group, 8:30 a.m. Kristall's Restaurant. Call David McIntyre, M.D., 206-954-4166. (2nd Wed.)
Children and Youth Program, 6:30-8 p.m., 4th-12th grade, Leavenworth Church of the Nazarene, 548-5292.
Leavenworth Rotary Club, Zoom meetings, noon. For more info. call President Teri Miller, 509-669-1585.

Thursday

Leavenworth Farmers Market, We will be closing after this last Thursday, Oct. 15th.
Leavenworth Chamber of Commerce, 8 a.m. Call Chamber, 548-5807. Everyone is invited to attend as a guest. Email Troy@leavenworth.org for Zoom meeting information. (1st & 3rd Thurs.)
Leavenworth Lions Club, For more info. email President Anita Wilkie at wilkieam2015@gmail.com
Peshastin Community Council meeting, 7 p.m. Peshastin Memorial Hall. (2nd Thurs.)

Friday

Chelan County Veteran Service Officer, WorkSource, and SSVF, coffee and organizational information, 10 a.m.-1 p.m., Kristall's Restaurant. Help with DD214, VA Disability Claim and more. (1st Fri.)
The Wenatchee Valley Doll Club, 11:30 a.m. Call Yvonne, 509-663-7991. (2nd Thurs.)
Caregiver Support Group, 2-3:30 p.m. For Caregivers of those with Memory Loss. The Henry Building, 120 Cottage Ave. Cashmere. Contact Carmen Gamble, 509-393-0789. (1st & 3rd Thurs.)

Monday

The Leavenworth Mosquito Control District board will hold meetings each month at 7 p.m. Contact Manager Jennifer Mullins, 548-5904 or email info@leavenworthmosquitodistrict.com. (1st and 3rd Mondays)
Upper Valley Free Clinic, 6:30 p.m., evaluates urgent health needs; dental consultation is available the 1st Mon. of the month. Contact Upper Valley MEND, 548-0408.
Young Life Club, 6:30 p.m. All high school age students welcome. TJ Kaapuni, 509-679-3247. (2nd & 4th Mon.)
Cascade School board meetings, 7 p.m., District Office board room. Call 548-5885. (2nd & 4th Mon.)
Chelan Douglas Republican Women, luncheon meeting, 11:30 a.m. Contact President Ellie, 425-319-9869 (1st Mon. each month).

Tuesday

Icicle & Peshastin Irrigation Districts: Meeting change for Sept. and Oct. now at 5 p.m. Call Anthony Jantzer, cell, 509-433-4064, 782-2561 or tony.iid.pid@nwi.net (2nd Tues.)
Cascade Medical Board Meeting, 9 a.m. Call Cascade Medical, 548-5815. (4th Tues.)
Leavenworth People with Parkinson's Disease Support Group, 11 a.m. Church of Jesus Christ of Latter Day Saints, 10170 Titus Road. Call Katherine (206) 356-4288 or Judi (425) 870-2089. (2nd Tues.)
Cascade Education Foundation. Contact: CEF@cascade.org
LWSC Alpine Committee, 7 p.m., Ski Hill Lodge. Call 548-5477. (1st Tues.)
Leavenworth Masons, 7:30 a.m., Zarthan Lodge No. 148, Leavenworth Senior Center upstairs. www.leavenworthmasons.org. (1st Tues.)
Cascade Garden Club, 1 p.m., at a member's home or other venue. Call President Claudia, 662-7706. (3rd Tues.)

NCW LIBRARIES

1-800-426-READ (7323). Online at NCWLIBRARIES.ORG
Leavenworth Public Library: 548-7923.
Peshastin Public Library: 548-7821.
 Order books online and pick up with curbside service on Monday, Wednesday and Friday 10 a.m.-2 p.m and Tuesday-Thursday 3 - 6:30 p.m. STEM and child craft kits available once a week. Adult craft kits available once a month.

Other events

Upper Valley Museum: We are closed at this time due to the Pandemic for more information call President Matt Cade 253-334-1144.
Leavenworth Fish Hatchery, 548-7641. Trails and grounds are open every day to the public. Please park outside the gate. All animals must be on a leash.
Note: Some meetings or events may be rescheduled due to holidays or other closures. Please call and check with that organization listed.

leavenworthecho.com

Notice

Please check with your church, local businesses, organizations, meetings and events that may have closed, cancelled, or postponed until further notice. We will have updates on our websites as well.

Feel free to update us by email at Reporter@leavenworthecho.com or Publisher@leavenworthecho.com.

Stay Well!

City Council Meetings

Call phone numbers for meetings or Zoom information 7 p.m., Leavenworth Planning Commission at City Hall contact Lilith Vespier, 549-5275. (1st Wed.)
 8 a.m., Leavenworth City Council study session, City Hall, 548-5275. (2nd Tues.)
 3 p.m., Design Review Board, City Hall, Sue Cragun 548-5275 (2nd & 4th Tues.)
 6:30 p.m., Leavenworth City Council meeting, City Hall, 548-5275 (2nd & 4th Tues.)

Senior Center Menus

Leavenworth Senior Center, 423 Evans St., Leavenworth
 Currently the Leavenworth Senior Center is closed due to the COVID 19 Virus. The meals on this menu will be available 3 days a week at the Leavenworth Senior Center, for take-out and home delivery meals. FOR MEAL PICK UP: CALL 24 HOURS IN ADVANCE TO RESERVE OR CANCEL (509)548-6666 or email Leavenworthseniors@gmail.com. For information about the Home Delivered meal program, call (509) 470-0522.
October 15, Thursday: No lunch.
October 16, Friday: Beef stroganoff, Brussel sprouts, tossed green salad, mixed berries, whole wheat roll, dessert.
October 17, Saturday and October 18, Sunday: No lunch.
October 19, Monday: Chicken fajitas, Baja veggies, fresh salsa, Mandarin oranges, dessert.
October 20, Tuesday: No lunch.
October 21, Wednesday: Meatloaf, potatoes and gravy, green beans, green salad, chilled pears, biscuit, dessert.

Sheriff/Fire/EMS

The sheriff's report is compiled from public records as provided by the Chelan County Sheriff's Office. The publisher cannot certify the complete accuracy of the information provided.

- | | |
|--|--|
| <p>October 2
 02:40 911, 100 Enchantment Park Way
 11:13 Accident/no injuries, Lake Wenatchee Hwy. & Brown Rd.
 17:02 Domestic disturbance, 11701 Chumstick Hwy.
 17:13 Accident/no injuries, 116 River Bend Dr., Safeway
 17:39 Property, 636 Front St., Visconti's Italian Restaurant
 19:16 911, 90 Mill St., WA DOT
 19:30 Noise, 12605 Icicle Ln.
 20:05 Attempt to locate, 23149 Lower Chiwawa River
 20:16 Traffic offense, 25714 Camp 12 Rd., Plain
 20:55 Noise, 10350 Suncrest Dr.
 20:59 Property, 228 Chumstick Hwy., #A
 21:21 Suspicious, 4875 US Hwy. 97, Peshastin
 23:56 Noise, 1217 Front St.</p> | <p>00:43 911, 100 Enchantment Park Way
 02:55 Noise, 1174 Dempsey Rd.
 05:21 911, 100 Enchantment Park Way
 05:46 Disturbance, 4637 US Hwy. 97, Peshastin
 08:54 Parking/abandon, Commercial & Division Streets
 09:04 Trespass, 22116 Appaloosa Ln, Plain
 10:12 Drugs, 12300 Blk., Shore St.
 12:20 Suspicious, 8200 E. Leavenworth Rd.
 13:31 Weapons violation, River Rd., MP 3, Plain
 15:16 Parking abandon, 1227 Front St.
 16:56 Parking/abandon, 7158 Icicle Rd.
 17:28 Traffic offense, E. Leavenworth Rd., MP 3
 17:36 911, 90 Mill St., WA DOT
 19:10 Suspicious, 9165 Deadman ill Rd., Dryden
 21:11 911, 100 Enchantment Park Way
 22:08 Accident/no injuries, Eight Mile Lake Trailhead</p> |
|--|--|

To see Sheriff's Report: leavenworthecho.com

Community Cupboard
 A Program Of Upper Valley MEND
 Thrift/Food Bank/Emergency Services
 A program of Upper Valley MEND
 Please help us meet our needs by donating the following items:
 • Cereal • Juice • Canned Fruit • Cooking Oil • Eggs • Meats • Chili • Soups
 Thank you for your support and Meeting Each Need with Dignity - M.E.N.D.
Open: Monday, Wednesday and Friday 10:30 a.m. - 4:30 p.m.
219 - 14th St. Leavenworth • 509-548-6727
 Kindly bring donations to our sorting center.

Das Thrift Haus is opening its doors. We will also be taking clothing and household donations at the sorting center again.

Das Thrift Haus
888-9990
 Open Monday - Saturday 10:30 a.m. - 5 p.m.
 Sunday 12 - 5 p.m.
 211 - 14th Street • Leavenworth
 This announcement courtesy of The Leavenworth Echo.

Your Future, Planned with Care.

<p>Brad Blackburn, CFP®</p>	<p>Investment Management Retirement Planning Financial Planning</p>	<p>Stephen Allen, CWS®</p>
-----------------------------	---	----------------------------

509-782-2600 121 Cottage Ave Cashmere, WA 98815

- 22:18 Court order violation, 17503 Winton Rd., Lake Wenatchee
 23:10 Noise, 12605 Icicle Ln.
October 4
 00:31 Noise, 2417 Salal Dr., Lake Wenatchee
 02:57 Attempt to locate, Snow Lakes Trailhead
 10:16 Animal problem, 920 Front St., Wok About Grill
 11:07 Suspicious, 15251 US Hwy. 2, Squirrel Tree, Lake Wenatchee
 13:47 Unknown accident, US Hwy. 2, MP 105 WB, Dryden
 14:34 Public assist, Front St. & US Hwy. 2
 14:46 Domestic disturbance, 105 Pine St., #B
 15:51 Suspicious, 90 Elderberry Ln., Peshastin
 16:46 Civil, 315 Benton St.
 16:57 Weapons violation, 10795 Chumstick Hwy.
 18:09 Suspicious, 17458 US Hwy. 2, Nason Creek, Lake Wenatchee
 18:44 911, 100 Enchantment Park Way
 19:37 911, 9000 Blk., E. Leavenworth Rd.
 19:54 Suspicious, 807 Front St.
 20:00 911, 100 Enchantment Park Way
 22:04 Suspicious, 95 Norling Ln.
October 5
 01:33 Domestic disturbance, 703 US Hwy. 2, Innsbrucker
 02:44 911, 10597 Nibelkin Rd., Peshastin
 05:21 Alarm, 12512 Wilson St.
 09:24 Parking/abandon, 9th & Commercial streets
 09:47 911, 590 US Hwy. 2, Enzian Inn
 10:17 Malicious mischief, 11001 US Hwy. 2
 10:43 Suspicious, 10261 Eagle Creek Rd.
 10:54 Suspicious, 27875 White River Rd.
 12:36 Public assist, 22915 Maple Dr., Lake Wenatchee
 12:40 Unknown accident, 8920 Icicle Rd.
 14:35 Scam, 3rd St.
 14:35 Sex offense, 11950 Titus Rd.
 17:01 Vehicle theft, 8912 Motel Rd., Dryden
 17:22 Traffic offense, Chumstick Hwy., MP 10
 17:31 Alarm, 565 US Hwy. 2
 18:33 Theft, 10th & Commercial streets
 20:33 Accident/no injuries, 10200 Blk., Chumstick Hwy.
 22:39 Attempt to locate, Little Wenatchee River
 23:16 Suspicious, 263 Mine St., #110
October 6
 06:00 911, 100 Enchantment Park Way
 11:31 Welfare check, Chumstick Hwy., MP 5
 15:51 Vehicle prowler, Icicle Rd., MP 8
 17:18 Domestic disturbance, 1329 US Hwy. 2, Dan's Food Market
 17:36 Suspicious, 23545 US Hwy. 2
 17:47 Property, Blackbird Island
 18:00 Domestic disturbance, 8731 Deadman Hill Rd., Dryden
 18:23 Weapons violation, 6843 US Hwy. 97, Peshastin
 19:02 Welfare check, 347 Division St.
 20:14 Trespass, 330 Evans St.
 20:23 Domestic disturbance, 330 Evans St.
 22:32 Welfare check, N. Dryden Rd. & School St., Dryden
October 7
 02:39 911, 100 Enchantment Park Way
 10:58 Fraud/forgery, 10183 County Shop Rd.
 13:13 Parking/abandon, 12426 Bretz Rd., Plain
 14:00 Suspicious, US Hwy. 2 & E. Leavenworth Rd.
 16:24 Scam, 16889 Mule Tail Flats Rd
 16:50 Unknown accident, North Rd., MP 3, Peshastin
 22:59 Domestic disturbance, 917 Commercial St.
October 8
 07:15 911, 100 Enchantment Park Way
 09:20 911, 309 - 8th St., Post Hotel
 09:39 Fraud/forgery, 8355 Lake St., Peshastin
 11:03 Trespass, 11779 US Hwy. 2
 14:06 Parking/abandon, 425 Ash St.
 15:57 Hazard, Shore St. & Icicle Rd.
 16:09 Suspicious, 409 Ash St.
 16:30 Hazard, 8374 Icicle Rd.
 19:26 Domestic disturbance, 810 US Hwy. 2, Bavarian Lodge
 20:04 Alarm, 21616 Camp 12 Rd., Plain
 21:03 Alarm, 7375 Icicle Rd., Sleeping Lady
 22:03 Noise, 12600 Blk., Icicle Pl.
 23:07 Attempt to locate, Colchuck Lake

Obituary

William F. Mitchell

November 25, 1928-October 5, 2020

Captain William F. Mitchell, U.S. Navy, Retired, died October 5th 2020 at Home.

Captain Mitchell was born November 25, 1928 in Lake Forest, Illinois. He lived in San Diego from 1929 until 1947 when he earned a presidential appointment to the U.S. Naval Academy, Annapolis, Maryland in a competitive examination. He entered the Naval Academy in June 1947 and graduated in 1951 with a Bachelor of Science Degree and a commission as Ensign, U.S. Navy. He earned a Master of Science in Management Degree from the U.S. Naval Postgraduate School, Monterey, California in 1961, and he pursued further graduate studies in national and international resources management at the Industrial College of the Armed Forces, Washington, D.C. in 1971-1972.

During the Korean conflict, Captain Mitchell saw action there as a division officer in an amphibious force ship and as a department head in a destroyer.

He then went ashore to set up warehouses and shop issue facilities at a new special weapons base near Las Vegas, Nevada; directed award winning food service operations at the Naval Station, Guam; and served at the Navy Supply Corps School as an instructor and curriculum branch head

teaching supply management courses to newly commissioned officers.

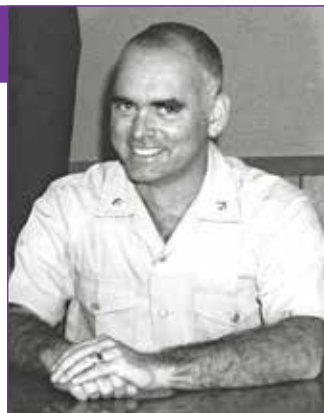
In 1963 he returned to sea as department head in a guided missile cruiser, leading five officers and 150 men in providing the ship's financial management, inventory control and storage of 33,000 line items of repair parts and supplies, food services for the crew of 1,000, retail and personal services, and payroll.

Returning ashore, he served as assistant for logistics for the Manager, Anti-submarine Warfare Systems Project Office, Washington, D.C. in the development and production of the Navy's anti-submarine warfare sensors and weapons.

In 1968 he began direction of all operations of the Navy's Piers 90-91 naval station and ocean freight terminal complex in Seattle. In 1972 he was assigned to the U.S. Naval Academy, Annapolis, where he directed a staff of over 600 to conduct the Academy's business affairs including accounting; purchasing; inventory control and warehousing; payroll; midshipmen's food service; midshipmen's store, bookstore, retail services, personal services; and, the Academy's dairy farm. His last duty was a joint service assignment as director of a systems analysis office

recommending comprehensive improvements for Department of Defense logistics systems for the Deputy Assistant Secretary of Defense, Installations and Logistics.

Transferring from active duty to the U.S. Navy Retired List in 1978, Captain Mitchell returned to the Seattle area where he managed the financial, administrative and business affairs of a Seattle law firm. He and his wife moved near Plain in 1983 where he contributed his services for five years as Chelan



County Fire District 4 Commissioner, Chief, state training instructor, training officer, firefighter and emergency medical responder. Introduction of effective radio communication, the 911 alarm system, firm financial management, investment of District funds, a rigorous training program, the training

and equipment to fight interior structure fires, protective clothing that met standards, an emergency medical response capability, and an automatic alarm response agreement with adjoining fire districts that came from his leadership as Commissioner and Chief improved community protection and were instrumental in gaining an improved fire protection rating for the Fire District.

Captain Mitchell was a member of the U.S. Naval Academy Alumni Association and the U.S. Naval Institute. He was a past member of the Seattle and national Associations of Legal Administrators, the American Bar Association Legal Administration Section, the Washington Fire Commissioners' Association, Washington State Fire Chiefs' Association, and the North Central Washington Fire

Chiefs' Association.

Captain Mitchell was preceded in death by his wife, the former Patricia Ann Tuthill of Seattle. He is survived by daughter Dr. Betsy Jo Mitchell and her husband, Dr. Wayne Sousa, of Berkeley, CA; daughter Lori Mitchell and her husband Patrick Marsolek of Potomac, MT; son Peter Mitchell and his wife, Lila, of Coocata WA; stepdaughter, Leslie Snyder and her husband, Richard, of Chelan WA; stepson Russell Stenquist and his wife, Joni, of Alpine WY; his sister, Betty Kosmas; and grandchildren Chelsea Jo and Joseph Mitchell, Nick and Lauren Scafturon, Shawn and Andrew Truesdell, Russell Lon Snyder, and Jake and Evan Sousa. His father, Dr. Frederick William Mitchell passed away in 1956 and his mother, Donna Marie Mitchell in 1991.

BUSINESS & SERVICE Directory

Add your business or service to this directory: 548-5286

DRILLING

Tumwater Drilling and Pump Inc.
 "Water Treatment Systems Built to Your Individual Problem"
Free Water Analysis/Estimates
 Conveniently located on Hwy 2 across from the Big Y Cafe in Dryden @ 9290 Hwy 2
Tumwater Drilling & Pump, Inc.
 548-5361
 www.tumwaterdrilling.com • email info@tumwaterdrilling.com
WATER SOFTENERS, IRON FILTERS, CONDITIONERS, UV FILTERS, REVERSE OSMOSIS, SULFUR, WHOLE HOUSE FILTERS, PREVENTATIVE MAINTENANCE, SERVICE, SALT SALES

STUMP REMOVAL

Quick 'n Easy Residential Stump Removal

 10817 North Road, Leavenworth • (509) 548-8222
 Kim & Rosalie Kozelisky
 Licensed, Bonded, Insured • Cont. #UPPERVE200PI

EXCAVATION

Complete Excavating Service
 Power & Water Systems
 Dump Truck & Dozer
 Drainfield Repair
 Free Estimates
 Septic Systems
 Road Grading

Upper Valley EXCAVATING
 (509) 548-3489
 Leavenworth, WA
 Licensed - Bonded - Insured

STORAGE

DOWNTOWN CASHMERE MINI STORAGE
 5x10- \$60 Per Month
 10x10- \$80 Per Month
 8x14- \$90 Per Month
 •Secure Timed Keylock System•
 •Mobile Platform Available•
 •Burglar Alarm•
 •Camera Surveillance•
782-8113
 201 Cottage Ave., Cashmere

Have spare room in your facility?
 Advertise on
STORAGE
 NCWMarket.com

We are here to serve families in Leavenworth, Peshastin, Plain and the entire Upper Valley.

JONES & JONES ~ BETTS
 Funeral Home
 302 9th St., Wenatchee • 662-2119 or 662-1561
 jonesjonesbetts.com
 Honoring the lives of residents in the Valley for over 100 years.
 You can always rely on our dedicated staff.

Due to the COVID-19 virus, all churches in the Upper Valley have suspended Saturday and Sunday services, Sunday School and meetings.

Please call or email your church listed below if you need more information. May you take time to pray, rest, meditate and reflect during this time. Stay well, stay strong and stay informed.

UPPER VALLEY CHURCH GUIDE

New to our area? On vacation? These churches welcome you!

TO PLACE INFORMATION IN THE CHURCH GUIDE CALL 548-5286

CASHMERE

- CASHMERE BAPTIST CHURCH**
 103 Aplets Way • 782-2869
 Sunday School 10:00 a.m. - Worship 11 a.m.
 Bible Study, Wed., 7 p.m.
 Pastor Bob Bauer
 Find us on Facebook at Cashmere Baptist Church
- CASHMERE PRESBYTERIAN CHURCH**
 303 Maple Street • 782-2431
 Sunday Morning Worship 10:30 a.m.
 Call for activities: Pastor Charles Clarke
 www.cashmerepres.org
- CASHMERE UNITED METHODIST CHURCH**
 213 S. Division • 782-3811
 Worship & Sunday School at 11:00 a.m.
 Office Hours: Monday - Thursday
 10:00 a.m. - 1:00 p.m.
 Pastor Lilia Felicitas - Malana
- CHRIST CENTER**
 Cashmere Assembly of God • 509-782-2825
 Worship Services are available ONLINE ONLY at 10 a.m. Sundays
 All updates on COVID-19 can be found at christcentercashmere.com/cc-updates
 Underground High School Group,
 ONLINE ONLY at 6 p.m. Sundays
 Lead Pastor, Steve Haney
 Children's Pastor, Andy Robinson
 Congregation Care Pastor, Joyce Williams
 Director of Operations, Pastor Ian Ross
 High School Director, Steffanie Haney

GRACE LUTHERAN CHURCH

- Morning Prayer, Evening Prayer or Holy Eucharist. Times and place will vary due to COVID restrictions.
 Service on YouTube or Email link:
 CashmereEpiscopalLutheranMinistries
 Contact Pastor Rob Gohl
 509-860-0736 for more information.
- St. James Episcopal Church**
 Morning Prayer, Evening Prayer or Holy Eucharist. Times and place will vary due to COVID restrictions.
 Service on YouTube or Email link:
 CashmereEpiscopalLutheranMinistries
 Contact Pastor Rob Gohl, 509-860-0736 or Deacon Carol, 670-1723 for more information.
- EVERGREEN BAPTIST CHURCH**
 5837 Evergreen Drive • 782-1662 • Sunday School - 9:45 a.m. • Morning Worship - 11 a.m. • Evening Service - 6:00 p.m. • Pastor John Smith www.christforcashmere.org

DRYDEN

- DRYDEN COMMUNITY CHURCH**
 Hwy 2 at Dryden Ave. • 782-2935 Sunday School 9:30 a.m. • Worship 10:45 a.m. Pastor Steve Bergland
- MID-VALLEY BAPTIST CHURCH**
 8345 Stine Hill Rd. • 782-2616
 Worship Service, 10 a.m., Sunday School, 9 a.m.
 Pastor Mike Moore
 www.midvalleybaptist.org

LEAVENWORTH

- CASCADE MOUNTAIN BIBLE CHURCH**
 "Where God's Word Remains The Pillar Of Truth"
 11025 Chumstick Hwy. • 548-4331
 Sunday School 9 a.m. • Sunday Worship 10:30 a.m.
 AWANA (Youth Program) Weekly Bible Studies
 Wednesday 6:30 p.m. (school year)
 Pastor Todd James • www.cmbiblechurch.org



CORNERSTONE BIBLE CHURCH
 Leavenworth Grange Hall
 621 Front St. • 548-0748
 Sunday Worship 10 a.m.

CHURCH OF JESUS CHRIST OF LATTER-DAY SAINTS
 10170 Titus Rd. (across from middle school)
 Church: 548-7667
 Meetings: Sunday - 10:00 a.m.

FAITH LUTHERAN CHURCH - ELCA
 "Reconciling Works Congregation"
 224 Benton Street • 548-7010
 Worship 9:30 a.m. w/coffee following
 www.faithleavenworth.org

FIRST BAPTIST CHURCH OF LEAVENWORTH, SBC
 429 Evans Street, 509- 470-7745
 Sunday Worship: 11:00 AM
 Website: www.leavenworthbaptist.com
 Email: info@leavenworthbaptist.com

LEAVENWORTH CHURCH OF THE NAZARENE
 111 Ski Hill Drive • 548-5292
 Sunday Worship 9:00 a.m.
 Lead Pastor: Mark Miller
 Youth Pastor, Kent Wright
 www.LCN.org



SEVENTH DAY ADVENTIST CHURCH
 10600 Ski Hill Drive • 548-4345
 Saturday Services
 Bible Study 9:30 a.m. • Worship 11 a.m.
 Fred Smith • 860-3997

SPIRIT LIFE CENTER
 210 Benton Street • 548-7138
 Sunday Worship 10 a.m.
 Prayer 6 p.m.
 Wednesday Bible Study 6:30 p.m.
 Pastor Russell Esparza

MONITOR



MONITOR UNITED METHODIST CHURCH
 3799 Fairview Canyon • 782-2601
 Church Service & Sunday School 9:00 a.m.
 Pastor Lilia Felicitas - Malana

PESHASTIN

LIGHT IN THE VALLEY COMMUNITY CHURCH
 8455 Main Street • 548-7517
 Sunday Worship 10 a.m.
 Pastor John Romine
 www.lightinthevalley.org



NEW LIFE FOURSQUARE CHURCH
 7591 Hwy. 97 • 548-4222
 Sunday Worship, 10 a.m.
 Pastors, Darryl and Mindy Wall
 Email: newlifeleavenworth@gmail.com
 FB page: newlifeleavenworth
 www.newlifeleavenworth.com



Opinions

The state of the newspaper industry in 2020

By BILL FORHAN

OWNER, NCW MEDIA, INC.

The most common question I get today is how is your business doing? Unlike that question posed to all small businesses impacted by COVID, what people really want to know is how has the Internet impacted us. It is a valid question.

The general assumption is newspapers are going to be forced to close down because of the competition from the latest new technology.

Let me put that notion to rest because I believe the Internet is the best thing that has happened to small community newspapers.

In the not to distant past, publishing a weekly newspaper was a labor of love that took amazing skills.

Small local publishers had to be a writer, a salesman, an advertising specialist, a photographer, a printer, and often a bookkeeper.

In small towns like ours they had to belong to most of the service clubs, the Chamber of Commerce and attend school board, city council meetings and most high school sporting events. If they were large enough they could hire reporters to do some of the work. Graphic artists to design the papers and customer advertisements. Pressman to run the press and delivery people to get the paper delivered.

Often times keeping staff was often difficult as they moved on to larger publications that could offer

higher pay and benefits.

We bought the Lake Chelan Mirror in late 2000 and immediately traded some stock in my little company to the then owners of The Leavenworth Echo and Cashmere Valley Record. At the time, The Echo and the Record were being printed in Ellensburg. Chelan had its own press. So, I was able to save enough money by moving my printing to Chelan to pay the debt on an SBA loan to complete the purchase.

Over the years we have added the Quad City Herald in Brewster and The Wenatchee Business Journal to our stable of publications.

Our early business plan was that by consolidating the back office functions of these small publications we could work to improve the editorial products.

The Chelan office handled printing, circulation administration and record keeping.

Leavenworth handled bookkeeping, corporate governance, taxes and personnel administration. We all shared advertising sales activity. Leavenworth also took charge of technology.

From our earliest days we installed a computerized system for taking and tracing advertising activity all through a network of computers.

We were one of the first businesses in Leavenworth and Chelan to install high speed fiber lines from the Chelan PUD to connect

our offices. That allowed us to send fully paginated pages to our printing operation in Chelan.

A few years ago we recognized that if we were going to be competitive in the print advertising world we had to add more color.

Unfortunately, our press and our building had limitations that could not be overcome without a huge investment in new press equipment. Equipment that may soon become the real Achilles heel to our business model.

At the same time, the larger daily newspapers were being hit even harder by the rise of the Internet. They began cutting editions. That left their presses with excess capacity that they needed to monetize. We sold our press to the Wenatchee World and started printing our papers on their press.

Today, there are only a handful of printing presses on the east side of the Cascades.

Competition for quality printing is keeping prices low and reduction in the number of editions and pages in daily newspapers across the country has resulted in excess paper production.

It may sound like the whimpers of a dying industry. But while the Internet purports to be able to replace the printed page it lacks one vitally important quality – local relevance. There are business models emerging to address that issue, but none have been able to

maintain viability.

They have been successful in picking off some advertising revenue from local media. Revenue that would otherwise support a more robust local media presence, but they do not provide reliable local news content.

Google and the other search engines are raiding local news sites to pull news content from other copyrighted media. They have come under criticism for that activity and are now starting to talk about paying local publishers for their content.

Today, each of our newspapers has an active website. Those sites contain some premium content that we developed on our own and much free content that is provided by local organizations and individuals. It also has content that is submitted to us but which we don't have room for in the print edition.

To access the premium content, visitors must be paid subscribers.

Last year, we changed our policy on our online subscriptions.

Premium access is now the same price as a print subscription. Part of our website includes an "E-Edition" that is an exact version of the printed newspaper. Visitor's have to be a paid subscriber to access it.

What we have learned is people will pay for an online edition. We get counts of exactly how many people opened the E-Edition.

The numbers are growing and

our readership has actually increased over the last few years.

One other thing we have learned in the last year. Some of the best local content has been contributed by local people.

We are exploring the issue of instead of us hiring young inexperienced journalists to send out on "assignment," we will be looking at establishing a list of contributors who we may pay as freelance writers.

Last year the best track coverage we have ever had was provided by the coach in Cashmere. We will be looking for more of that kind of coverage going forward.

The other question I always get these days is, "when are you going to retire.?"

My wife and I love what we do, but we are getting older and would like to pursue other activities. We are interested in selling.

We truly believe that this business can be a home-based business that provides a good income. If you think you might be interested give me a call and we can discuss our vision for the future with you. My cell is 509-670-1837.

By the way, one of the things I would like to pursue is to write a couple of novels. My first one is in editorial review now and should be available in book stores and on Amazon by the end of the year. Keep your eye open for a local ad for pre-ordering!

CONTINUED FROM PAGE 1

Governor Jay Inslee and challenger Loren Culp spar over policy

Culp pointed out that there are too few beds available in the state for mental health care. When a police officer responds to a suicide request, that person is obviously in a mental health crisis.

The officer takes that person to the nearest health care facility to see if they can find a bed for the person. There are no beds so the person is released back out on the streets.

Inslee then responded to Culp's comments by saying they are working on a program to make mental health care a community based program.

The problem however is that President Trump and the Republicans want to take away health care.

They are working to repeal the Affordable Care Act. Their program would eliminate coverage for 800,000 Washingtonians. We have to talk about

how we pay for health care.

Inslee then pointed out that in his opening remarks Culp said he would cut the budget. This is not the time to cut the budget for health care according to Inslee.

Governor Inslee responded to a question from the panel about his initial response to the rioting in downtown Seattle by denying he ever said he was not aware of it.

It was a difficult situation because we had tens of thousands of people peacefully protesting. In the middle of that were a number of people who were violently disrupting the peaceful protest.

In his response Culp pointed out that the governor is soft on crime. Culp reinforced his support of the constitution saying people absolutely had the right to peacefully protest, but when they start damaging

private property, setting cars on fire, throwing bottles of frozen water at police, breaking windows that is illegal. It is called rioting. Yes, the governor called in the National Guard but before he sent them in, he disarmed them. I would never, ever, send our law enforcement into a dangerous situation without the means to protect themselves.

In his rebuttal Governor Inslee said the decision to send in the National Guard without firearms was the decision of the Commanding General of the Washington state National Guard.

Governor Inslee then began to criticize Culp for failing to enforce the gun control laws in his county. Culp's response was that police officers have discretion about what laws they will enforce and he believes the law is unconstitutional.

Culp then accused Inslee of violating his oath of office to support and defend the constitution. Culp then repeated his criticism of Inslee's refusal to follow the state Constitution.

Article 1 section 24 of the state constitution says the right of the individual citizen to bear arms in defense of himself or the state will not be impaired.

Panel moderator, Chris Daniels of King5, then challenged Culp on the fact that the state budget is larger than the one he deals with in little Ferry County and asked how he would deal with the state budget.

Culp was direct and said as soon as he takes office he would freeze spending. No pay raises, no equipment purchases, we are going to go through the budget line by line. I would go first after anything that has the word study in it.

Inslee argued for a big increase in the Capital Budget to put people back to work.

In view of what is seen as a looming budget deficit he did not explain how he would pay for it.

Culp also pointed out that

Governor Inslee signed a contract with a global consulting firm for \$165,000 per week to help him know what to say in the middle of the Pandemic.

Inslee said he had no idea what Culp was talking about. Inslee denied any knowledge of the agreement but The Seattle Times confirmed after the debate that Inslee had in fact signed a contract with McKinsey for \$1.3 million to advise him on COVID policy.

On climate change Governor Inslee blamed the recent fires on climate change but Culp disputed that saying the problem is really related to lack of management of our forests. Our forests are full of dead and diseased trees. We have no fire breaks in our forests because of road closures.

These fires are worse not because of climate change but because we are not managing our forests. We don't log them. We don't replant them. We do not remove dead and diseased trees that ultimately become a source for more intense fires.

This debate established a clear distinction between the Incumbent and the challenger. Inslee has already had 8 years to demonstrate effective and compelling leadership of state government. Given that period of time he should have a commanding knowledge of the issues facing our state.

Unfortunately, he took no responsibility for the problems or the decisions he has made to address them. He routinely blamed President Trump, the Republicans or others for the failures that have occurred during his administration.

One thing is increasingly clear to those who follow the political process.

Government insiders resent and are threatened by outsiders. Inslee has made government service his life's work and he is clearly threatened.

President Trump and Loren Culp are not career politicians. Culp was clear about his position. He never dodged a

question and he offered sound reasoning about how he would handle the office.

Our founding fathers set up a system to allow ordinary citizens to become the leaders of our amazing country.

It is time to send all of the entrenched bureaucrats a message that the American

people have lost faith in their leadership.

Culp has a difficult task to overcome the Democrat machine in this state.

Republicans have a difficult job in getting out the vote and encouraging their Democrat friends that it is time for a change.

LETTERS TO THE EDITOR

Your Vote, Your Conscience

Let's see if I have this right. On one side you have a person who is known for his occasional gaffes.

On the other side, a person who will look you straight in the eye while lying like the proverbial rug! You have one person who won't show his taxes, or his school grades. Good old "Uncle Joe", on the other hand, is an open book.

The "Trumpster's" sister, niece, personal lawyer "The Fixer", John Bolton, the person who wrote (co-wrote) "The Art of the Deal", people who would have inside knowledge of this side-show President, all have very little or nothing good to say about him. Donnie dismisses all this with, "it's all fake news", and his adoring flock weeps!! He's a draft dodger who "knows more than the Generals". This great businessman has managed to bankrupt himself four times!! "I, alone, can fix it". Covid-19 should be his time to shine, instead he comes on like a complete failure. "It will, like a miracle, just blow away".

In summation, I'll just add, don't take my word for it. Listen to anything other than FOX News, KPQ for instance. Do I need to say, I won't be voting for him? Yet, in an odd, perverse way, I'd like to see him get a second term. He would have a hard time blaming the previous administration.

Love and Peace,
Charlie Olinghouse
Cashmere

P.S. If he loses and won't accept it, I say ignore him and let him wander around the White House with the ghosts of Presidents past. It would be great for tourists, and what could it possible harm. One more thing: When "they" talk about socialism, why is it always Venezuela, and not Sweden, Norway, or Finland?

Centenarian doubts Joe Biden's knowledge of Lincoln

Dear Editor,
My name is Mabel Hoffman. I am 100-years-old and a Republican and I subscribe to the Cashmere Valley Record.

After watching Joe Biden speaking about Abraham Lincoln recently on TV, I really wonder if he knows that Mr. Lincoln was a Republican?

I don't know if anyone else noticed this, but I thought I would say something about it.

Thank you for taking my call.
Mabel Hoffman,
Cashmere

Leavenworth

Stand Up For Your Country Rally

Join us on Sunday, October 18 on the Leavenworth Bridge. Hwy. 2 from 1- 2 p.m. Bring your American flags, Red, White & Blue balloons. Stand Up For Your Country or Patriotic signs. Stand Up For our Flag. NO political candidate party signs. To sign up or for more information: Ann Crosby: 509-548-1544 or seasmilecros@gmail.com.

Leavenworth Farmers' Market

Please note that October 15 will be the last farmers's market at the Alpine School for this year.

UVMEND Gleaning

The one BIG, final apple glean, when we partner with Northwest Harvest and share our bounty with food banks statewide, is next weekend, October 17. We need to pick 20,000 pounds of apples to share with Washington state families who have been hit the hardest during these difficult times. This is a wonderful friends and family event. Bring out the kids and the grandparents for a COVID-safe morning helping to feed the state. To add your name to the volunteer list, call gleaning coordinator Blakely at 509 548 0408.

NCW Library

The Bookmobile will be in Plain on Thursdays from 10 a.m. - 2 p.m. For bookmobile curbside questions please call: 509-679-0056.



Place your ad online at NCWMARKET.COM or call 509-548-5286 - Leavenworth Echo/Cashmere Valley Record 509-682-2213 - Lake Chelan Mirror • 509-689-2507 - Quad City Herald

CLASSIFIEDS

Administrative

Publisher's notice

PUBLISHER'S NOTICE
All real estate advertising in this newspaper is subject to the Fair Housing Act, which makes it illegal to advertise "any preference, limitation or discrimination based on race, color, religion, sex, handicap, familial status or national origin, or an intention to make any such preference, limitation or discrimination." This newspaper will not knowingly accept any advertising for real estate that is in violation of the law. To complain of discrimination call HUD at 1-800-669-9777. The number for hearing impaired is 1-800-927-9275.

CORRECTIONS: NCW Media Inc. shall be responsible for corrections to advertisements on the first publication only. The advertiser will be responsible for corrections made thereafter. NCW Media Inc. shall not be responsible for slight changes or typographical errors that do not lessen the value of the advertisement. NCW Media Inc.'s liability for other errors or omissions in connection with an advertisement is strictly limited to the publication of the advertisement in any subsequent issue. No monetary refunds will be given. For more information call (509) 548-5286.



Administrative

Puzzle Solution

C	H	E	S	T	S	K	A	S	T	O	P			
R	E	A	S	T	A	N	I	L	F	L	U	M	E	
T	R	A	I	T	A	R	P	L	E	P	E	R		
T	U	R	N	I	P	H	O	U	D	I	N	I		
S	A	C	R	A	C	K								
I	T	S	V	I	B	E	T	E	R	C	E	T		
R	A	T	E	N	O	T	E	S	A	U	T	E		
I	B	E	X	G	H	O	S	T	C	R	U	X		
S	O	R	E	S	R	O	P	E	E	D	D	A		
H	O	N	C	H	O	L	Y	R	E	Y	E	S		
			I	D	E	S	S	T	I	N				
C	A	D	A	V	E	R	G	E	T	O	U	T		
E	L	A	D	E	E		E	G	O	H	O	R	A	L
D	O	L	O	R	C	O	N	E	N	N	U	I		
E	E	L	S	T	O	E	R	E	S	T	S			

4	5	2	7	1	8	3	9	6
9	8	6	3	4	5	1	2	7
3	7	1	6	9	2	8	5	4
6	9	8	5	7	3	2	4	1
7	3	4	8	2	1	9	6	5
1	2	5	9	6	4	7	8	3
2	6	7	4	3	9	5	1	8
5	4	9	1	8	7	6	3	2
8	1	3	2	5	6	4	7	9

Announcements

Lost & Found

LOST AND FOUND can be placed in our local newspaper and online for ONE week for FREE. Limit 30 words

Leavenworth/Cashmere 509-548-5286
or
Lake Chelan Mirror 509-682-2213
or
Quad City Herald 509-689-2507

Deadline is Noon on Friday

Happy Ads

HAVE A SPECIAL EVENT COMING UP? PLACE IT IN OUR CLASSIFIEDS IN THE PAPER AND ONLINE

24/7 at www.NCWMarket.com

HAPPY BIRTHDAY
CONGRATULATIONS!

WILL YOU MARRY ME?

HAPPY ANNIVERSARY
Only \$15 for 30 days includes 3 photos

Chelan-Brewster 682-2213 or
Leavenworth-Cashmere 548-5286

Happy Ads

Need a social-distancing location for your Halloween party? FREE venue for organizations with liability insurance. Choice of 2 great areas in Cashmere including electricity and rest room facilities. Call 509-782-1004.

Employment

Help Wanted

Full and Part-Time Breakfast Catering Staff
The Enzian Inn is searching for energetic service oriented individuals to join our breakfast/ catering team. Position provides opportunities to learn and perform a variety of duties. Prepare, present and serve the daily breakfast buffet and at catered functions. Full and part-time positions requiring some weekends. Recreational amenities of hotel are available to employees including fitness center, indoor/ outdoor pool, spa and putting course. Apply in person. 590 Hwy. 2 Leavenworth

PATEROS SCHOOL DISTRICT ROUTE BUS DRIVER

Pateros School District has an opening for a permanent part time route bus driver. Mon - Fri, 5 hours per day split between the morning and afternoon route. \$21.39 hour. Position commences immediately. Class B CDL with 'S' endorsement (passenger and air brakes) required. Deadline for applications is 10/19/20. Position opened until filled. Applications are processed through Fast Track. Link available at www.pateros.org under District Office, Employment. Questions: employment@pateros.org or 923-2751x4. EOE

Full and Part-time Bedmaker, Laundry and Housekeeping

The Enzian Inn is hiring for full and part-time Housekeeping, Laundry, Bedmakers. Enjoy a competitive wage and positive working environment. Shifts typically begin at 9 a.m. and end between 2- 4 p.m. daily.

Hotel amenities such as fitness room, indoor pool and jacuzzi are available to employees and their immediate family to enjoy in the winter months. Apply in person Enzian Inn 590 US Hwy. 2 Leavenworth

Advertise Advertise Advertise Advertise Advertise Advertise
548-5286 or 782-3781
YOU WILL Call Now! Call Now! Call Now! Call Now! Call Now! Call Now!

Help Wanted



MED/SURG RN Full-time/ Nights

Three Rivers Hospital is in need of a Med/Surg RN to perform general nursing duties in an acute care setting with adequate supervision. Current WA State RN license and must have current BLS/CPR & obtain ACLS certification within one year. Rotating days and includes some weekends.

Interested Candidates may apply in person or by mailing their resume to: Three Rivers Hospital Human Resources Dept. PO Box 577 Brewster, WA 98812 (509) 689-2517 www.threerivershospital.net opportunity@trhospital.net EOE

City of Leavenworth Employment Opportunity

ASSISTANT PLANNER

The City of Leavenworth, an equal opportunity employer, has an opening for an Assistant Planner within the Development Services Department. This full-time position includes an excellent benefit and retirement package; the individual must be able to work weekends, holidays, and overtime. Primary focus of this position is code compliance with other duties including processing land use and development applications, SEPA preparations, coordinating plan review with other agencies, presenting to the Hearing Examiner and Planning Commission, interpretation and application of local, state and federal laws, creation of maps and data extraction using GIS, and providing clerical and customer service support. The Salary Range is \$4,181 - \$5,378 in accordance with union specifications for step increases over time. To request an application packet, contact the City of Leavenworth at (509)548-5275 or 700 US Highway 2, Leavenworth, WA 98826 or visit the City's website at <https://cityofleavenworth.com/employment-opportunities/>

to download the full job announcement/ supplemental questions, job description and application. Deadline submission for first review is Wednesday, October 28, 2020 at 5:00 p.m. Position is open until filled.



The Cascade School District is seeking qualified applicants for the following position:

Transportation Bus Driver

Fast Track application process and information can be found on our website at: www.cascadesed.org EOE

www.leavenworthecho.com
www.cashmerevalleyrecord.com

Windermere Real Estate/NCW
Leavenworth/Lake Wenatchee Specialists

Looking for real estate in the Upper Valley?
Carmen Bagdon - 237-2060
Momi Palmieri - 433-2211
Geordie Romer - 679-8958
Allyson Romer - 630-9898

Give us a call today!
See all available properties at windermereleavenworth.com

Help Wanted

OCTN is accepting applications for a part-time cook in Brewster. See us online at www.octn.org for complete job description and application information. **OCTN** is an EOE

Find the Best Qualified Local Employee in our Classifieds Ads.

Place your ad online 24/7 at www.NCWMarket.com It is easy, just register and pay online.

Print only? Deadline is Monday by Noon for all papers:

Lake Chelan Mirror
Quad City Herald 683-2213
Leavenworth Echo
Cashmere Record 548-5286

Your ad will appear online and in the newspapers for one low price!

For Sale

Antiques & Collectibles

Get cold hard cash for your Antiques and Collectibles by placing them in our classifieds.

Place your ad with pictures online 24/7 at NCWMarket.com Just register and pay online and you are done. Your ad will appear online and in the newspaper for one low price.

Deadline Monday at Noon for all papers:

Lake Chelan Mirror
Quad City Herald 682-2213
or call
Leavenworth Echo
Cashmere Record 548-5286

Furniture

NCW Media Newspapers Cashmere

Office furniture available. Items: 2 large wood desks with side desk attachment, One metal desk, one large wood conference table, a large counter approx. 7' x 3 1/2' tall with removable shelves, A wood credenza All other items are now only \$10 cash and carry out. Call to arrange a time to examine or pick up. All items located in Cashmere. For information call Leavenworth Echo, 548-5286 or Bill, at 509-670-1837. Also see photos on NCWMarket.com

Garage & Yard Sale



CLEAR SOME SPACE WITH A CASH \$\$ AD
Let others know what items you are selling!

Go online now to Place your ad 24/7 at www.NCWMarket.com

Print only? Deadline Monday at Noon for all papers

Lake Chelan Mirror
Quad City Herald
Call 682-2213

Leavenworth
Cashmere
Call 548-5286

Your ad will appear online and in the newspapers for one low price.

Sporting Goods

10 ft. Livingston Double Hull Boat. New 9 HP electric start gas motor, only been used 12 hours. Brand new 4 speed trolling motor and pop-up seats. Great condition \$3,500 or OBO. Call Steve 509-670-9043.

Real Estate

Rentals

Your Trailer on my lot. Leisure Manor has an opening for a mobile home or 5th wheel. 1 year lease. \$400 a month for lot. You pay utilities. Very desirable location. Available now. Bridgeport, WA. 425-301-2328.

Legals

Public Notices

CHELAN COUNTY PUBLIC HOSPITAL DISTRICT #1 NOTICE OF BUDGET HEARING CASCADE MEDICAL CENTER NOTICE IS HEREBY GIVEN that the Board of Commissioners of Cascade Medical Center has set a public hearing for Tuesday, October 27, 2020 at 9:00 AM for the hospital's budget hearing for the 2021 Budget. The hearing will be held in the Arleen Blackburn Conference Room at Cascade Medical Center, 817 Commercial Street, Leavenworth. Due to Washington State Proclamation 20-28.11 regarding open public meetings, the public may attend via phone or Zoom video connection. Zoom Meeting ID: 767 044 0052, Passcode: 98826 or dial in by calling 1 253 215 8782. Connection information will also be available on Cascade Medical's website at cascademedical.org or by emailing Adminoffice@cascademedical.org by 5:00 PM, Monday, October 26th. Published in The Leavenworth Echo/Cashmere Valley Record on October 14, and 21, 2020 #962

Public Notices

SUPERIOR COURT OF WASHINGTON IN AND FOR CHELAN COUNTY
In the Matter of the Estate of JULIE ANN VAN REENEN, Deceased. NO. 20-4-00296-04
PROBATE NOTICE TO CREDITORS

The Administrator named below has been appointed as administrator of this estate. Any person having a claim against the Decedent must, before the time the claim would be barred by any otherwise applicable statute of limitations, present the claim in the manner as provided in RCW 11.40.070 by serving on or mailing to the Administrator or the Administrator's attorney at the address stated below a copy of the claim and filing the original of the claim with the court in which the probate proceedings were commenced. The claim must be presented within the later of: (1) Thirty days after the Administrator served or mailed the notice to the creditor as provided under RCW 11.40.020(1)(c); or (2) four months after the date of first publication of the notice. If the claim is not presented within this time frame, the claim is forever barred, except as otherwise provided in RCW 11.40.051 and 11.40.060. This bar is effective as to claims against both the Decedent's probate and non-probate assets. DATE OF FIRST PUBLICATION: October 7, 2020
ADMINISTRATOR Aaron Van Reenen
ATTORNEY FOR ADMINISTRATOR: David A. Kazemba

ADDRESS FOR MAILING OR SERVICE: OVERCAST LAW OFFICES-NCW, PLLC 23 South Wenatchee Avenue, Suite 320 Wenatchee, WA 98801
COURT OF PROBATE PROCEEDINGS AND CAUSE NUMBER: Chelan County Superior Court, No.20-4-00296-04
OVERCAST LAW OFFICES-NCW, PLLC
By: /s/ David A. Kazemba
David A. Kazemba, WSBA No. 48049
Published in The Leavenworth Echo/Cashmere Valley Record on October 7, 14, and 21, 2020 # 923

Public Notices

Statement of Ownership Management and Circulation Required by 39 U.S.C. 3685

The Leavenworth Echo (USPS 308 160) is published weekly at Leavenworth, WA. Annual subscription rates: \$40.00 in Chelan County, \$52.00 outside Chelan County in the United States. Mailing address: P.O.Box 39, Leavenworth, WA. 98826. Publisher William E. Forhan, NCW Media Inc., P.O. Box 39, Leavenworth, WA. 98826. Editor, William Forhan. The Echo is owned by NCW Media Inc. Stockholders owning 1 percent or more of the total amount of stock: William and Carol L. Forhan both P.O. Box 39 Leavenworth, WA. 98826, Jeff Gauger and Liz Gauger, both 1003 Browning Rd., Greensboro, NC., 27410. Numbers are average during preceding year and for September 30, 2020. Total number of copies printed: 1150, 1150. Sales through dealers and carriers, street vendors and counter sales: 380, 380. Total paid and requested circulation: 843, 796. Free distribution: 15, 16. Total distribution 883, 838. Copies not distributed 267, 313. Total 1150, 1150. Percent paid and/or requested circulation: 95.47%, 94.99%. I certify that all information is true and complete. William E. Forhan, President, October 14, 2020. Published in The Leavenworth Echo on October 14, 2020.



Public Notices

SUPERIOR COURT OF WASHINGTON IN AND FOR CHELAN COUNTY

In the Matter of the Estate of EMORY COURTLAND WEBBER, Deceased. NO. 20-4-00294-04 PROBATE NOTICE TO CREDITORS The Personal Representative named below has been appointed as Personal Representative of this estate. Any person having a claim against the decedent must, before the time the claim would be barred by any otherwise applicable statute of limitations, present the claim in the manner as provided in RCW 11.40.070 by serving on or mailing to the Personal Representative or the Personal Representative's attorney at the address stated below a copy of the claim and filing the original of the claim with the court in which the probate proceedings were commenced. The claim must be presented within the later of: (1) Thirty days after the Personal Representative served or mailed the notice to the creditor as provided under RCW 11.40.020(1)(c); or (2) four months after the date of first publication of the notice. If the claim is not presented within this time frame, the claim is forever barred, except as otherwise provided in RCW 11.40.051 and 11.40.060. This bar is effective as to claims against both the decedent's probate and nonprobate assets.

DATE OF FIRST PUBLICATION: September 30, 2020
PERSONAL REPRESENTATIVE: Cheryl Lee Miller
ATTORNEY FOR PERSONAL REPRESENTATIVE: Thomas Overcast
ADDRESS FOR MAILING OR SERVICE: OVERCAST LAW OFFICES 23 South Wenatchee Avenue, Suite 320, Wenatchee, WA 98801
COURT OF PROBATE PROCEEDINGS AND CAUSE NUMBER: Chelan County Superior Court, No. 20-4-00294-04
OVERCAST LAW OFFICES By: /s/ Thomas D. Overcast, Thomas D. Overcast, WSBA No. 14486
Attorneys for Personal Representative
Published in The Cashmere Valley Record/Leavenworth Echo on Sept. 30 and Oct. 7 and 14, 2020. #891

Public Notices

IN THE SUPERIOR COURT OF THE STATE OF WASHINGTON FOR KING COUNTY
In Re the Estate of BRUCE A. FOSTER, Deceased.
NO. 20-4-05561-9 SEA PROBATE NOTICE TO CREDITORS

The personal representative named below has been appointed as personal representative of this estate. Any person having a claim against the decedent must, before the claim would be barred by any otherwise applicable statute of limitations, present the claim in the manner as provided in RCW 11.40.070, by serving on or mailing to the personal representative or the personal representative's attorney at the address stated below a copy of the claim and filing the original of the claim with the court. The claim must be presented within the later of: (a) Thirty days after the personal representative served or mailed the notice to the creditor as provided under RCW 11.40.020(3); or (2) four months after the date of first publication of the notice. If the claim is not presented within this time frame, the claim is forever barred, except as otherwise provided in RCW 11.40.051 and 11.40.060. This bar is effective as to claims against both the decedent's probate and nonprobate assets.

Date of First Publication: October 14, 2020.
Personal Representative: DAWN S. FOSTER
Attorney for Personal Representative: KANO S. OSTREM
Address for Mailing or Service: 8905 Roosevelt Way NE Seattle, WA 98115
Published in the Cashmere Valley Record/ The Leavenworth Echo on October 14, 21, 28, 2020. #948

Public Notices

Statement of Ownership Management and Circulation Required by 39 U.S.C. 3685

The Cashmere Valley Record (USPS 092 600) is published weekly at Cashmere, WA. Annual subscription rates: \$40.00 in Chelan County, \$52.00 outside Chelan County in the United States. Mailing address: 201 Cottage Avenue, Suite 4, Cashmere, WA. 98815. Publisher, William E. Forhan NCW Media Inc., P.O. Box 39, Leavenworth, WA. 98826. Editor, William E. Forhan. The Cashmere Valley Record is owned by NCW Media Inc. Stockholders owning 1 percent or more of the total amount of stock William E. and Carol L. Forhan both P.O. Box 39, Leavenworth, WA. 98826, Jeff Gauger and Liz Gauger, both 1003 Browning Rd., Greensboro, N.C. 27410. Numbers are average during preceding year and for September 30, 2020. Total number of copies printed 550, 550. Sales through dealers and carriers, street vendors and counter sales: 184,177. Total paid and requested circulation: 399,375 Free distribution: 8, 8. Copies not distributed: 143, 167. Total 407, 383. Percent and/or requested circulation. 98.03%, 97.91%. I certify that all information is true and complete. William E. Forhan, President, October 14, 2020. Published in the Cashmere Valley Record on October 14, 2020.

Advertise
548-5286
or
782-3781

Combatting cybersecurity threats of the COVID-19 era

STATEPOINT - New data reveals that in uncertain times, consumers and businesses need even greater vigilance when it comes to their cybersecurity.

The mid-year update to the 2020 SonicWall Cyber Threat Report highlights an opportunistic use of the COVID-19 pandemic by cybercriminals.

"Cybercriminals can be resourceful, often setting traps to take advantage of people's kindness and panic in uncertain times, as well as their trust in everyday systems," says Bill Conner, SonicWall president and CEO. "With everyone more remote and mobile than ever before, the cybercriminal industry is very aware that businesses are highly exposed."

Shifting Threats

During the first half of 2020, global malware attacks fell from 4.8 billion to 3.2 billion over 2019's mid-year total, a continuation of a downward trend. However, less malware doesn't necessarily mean a safer world; ransomware has seen a corresponding jump

over the same time period and continues to be the preferred tool for cybercriminals. Increasing a staggering 20% globally in the first half of 2020, SonicWall logged 79.9 million ransomware attacks (+109%) in the U.S., a trend that continues to ebb and flow based on the behaviors of agile cybercriminal networks.

COVID-19 Email Scams

The global pandemic plus social-engineered cyberattacks has proven to be an effective mix for cybercriminals utilizing phishing and other email scams. Dating as far back as Feb. 4, SonicWall researchers detected a flurry of increased attacks, scams and exploits specifically based around COVID-19. This contrasts with phishing as a whole, which was down slightly by the time pandemic phishing attempts began picking up steam.

Office Lures a Staple

Microsoft Office is a necessity for millions working remotely. Cybercriminals were quick to leverage this shift. Leveraging SonicWall Capture Advanced

Threat Protection with patent-pending Real-Time Deep Memory Inspection technology, SonicWall discovered that 22% of Microsoft Office files and 11% of PDF files made up about one-third of all newly identified malware in 2020. The technology identified a record 120,910 'never-before-seen' malware variants during that time -- a 63% increase over the first six months of 2019.

"Cybercriminals are too sophisticated to use known malware variants, so they're re-imagining malware to defeat security controls, and it's working," said Conner.

Non-Standard Ports

By sending malware across non-standard ports, assailants can bypass traditional firewall technologies, ensuring increased success for payloads. A 'non-standard' port is leveraged by services running on a port other than its default assignment. An average of 23% of attacks took place over non-standard ports -- the highest mark since SonicWall began tracking the

vector in 2018.

IoT Serves Threats

Remote workforces can introduce many new risks, including Internet of Things (IoT) devices like refrigerators, baby cameras and doorbells. A 50% increase in IoT malware attacks mirrors the number of additional devices connected online, as individuals and enterprise alike function from home. Unchecked IoT devices can provide cybercriminals an open door into what may otherwise be a well-secured organization.

As organizations mobilize for their new business normal, they can adapt to new threats in real-time by leveraging the services of security experts such as SonicWall. For more information, visit sonicwall.com.

"This new business normal is no longer new," says Conner. "As everything goes more remote, mobile and unsecured, organizations must move away from makeshift or traditional security strategies."

Newspaper Fun!
Animilis LLC © 2020 V16-40

Apples and falling leaves... scurrying squirrels and football! Kids: color stuff in!

Fall Times and Rhymes

In each clue find the silly word (in bold) then fill in the puzzle with a word that rhymes and makes sense.

- bumpkins** dot fields waiting to be picked
- families gather to watch new television **foes**
- a full harvest **tune** glows in the night sky
- hawk**s are turned back one hour
- families sit in hay and laugh as they bump along on the farmer's **dragon**
- a **moose** flies south
- a family decorates the **mouse** with pumpkins, wreaths and orange Chinese lanterns
- practice is after school for the football **dream**

Fall Sayings Fall is in full swing. The word "fall" is used in many ways. Can you match the sayings to their meanings?

- fall all over someone
- fall back on the first plan
- fall behind
- fall down on the job
- fall flat
- fall for
- fall over backwards
- fall short
- fall out
- fall to

A. doing all one can to please
B. to like someone very much
C. not do the job well
D. turn to the first idea for help
E. fail to reach goal
F. fail completely
G. show too much love
H. begin to work
I. leave one's place after a military inspection
J. to go slower than others and not keep up

Read these fun fall rhyming clues to fill in the crossword.

- Some of them fly south when the weather gets cold; But they fly back north when warm weather takes hold.
- It flies through the air, the goal post it clears; the home team wins, the crowd jumps and cheers!
- They swirl through the air, crunch under your feet; A big pile to jump into just can't be beat!
- The wind blusters and shakes the branches of the trees; Plop! Plop! He gathers all the acorns he sees!
- It forms crystal feathers on glass and freezes the leaves; Its deep cold can cause a strong road to buckle in heaves.

Will you remember to turn the clock back, Jack?
Fall is a fun time to make a rhyme!
Fall is a ton of fun!
Fall as a rule is cool! Better get a sweater!

Fit the answers into the puzzle!

Goose moon
pumpkins
clocks
team
house
wagon
I guess I'm not very scary!
caw caw

Public Notices

The Leavenworth Mosquito Control Board will be holding a Public Hearing at 7:00 pm on Monday, October 19, 2020 via ZOOM, to discuss and approve our operating budget and per parcel tax rate for 2021. To receive a link to attend please call or text your email address to Manager Jennifer Mullins by noon, October 19 at 509-548-5904.

Published in The Leavenworth Echo/Cashmere Valley Record on October 14, 2020. #967

WHAT'S HAPPENING

Need to promote your event? Have you thought about NCWMarket.com the best online promotion available

Fall Times and Rhymes

Yum! Apples...
Fall is a fun time to make a rhyme!

1. fall all over someone
2. fall back on the first plan
3. fall behind
4. fall down on the job
5. fall flat
6. fall for
7. fall over backwards
8. fall short
9. fall out
10. fall to

A. doing all one can to please
B. to like someone very much
C. not do the job well
D. turn to the first idea for help
E. fail to reach goal
F. fail completely
G. show too much love
H. begin to work
I. leave one's place after a military inspection
J. to go slower than others and not keep up

1. Bobby Fischer's game
2. Reggae precursor
3. Octagonal sign
4. Haile Selassie's disciple
5. Water-filled gorge
6. Blue eyes, e.g.
7. Jean of Dadaism
8. Pariah, for medical reasons
9. Pumpkin's Halloween precursor
10. Famous magician who died on Halloween
11. Mortuaire, or body bag in Paris
12. Nordstrom's outlet
13. "Now or Never"
14. Good or bad and felt by others, sing.
15. Haiku, e.g.
16. Equal to distance divided by time
17. Post-it slip
18. Quickly fry
19. Type of mountain goat
20. Graveyard denizen
21. Heart of the matter
22. Tender spots
23. Bailing twine, e.g.
24. Icelandic epic
25. Boss
26. Greek muse's strings
27. Up and down nod
28. "Beware the ___ of March"
29. One of seven, in eponymous 1995 film
30. "Dead one"
31. "Jordan Peele's scary 2017 film"
32. Dodge
33. Freud's concern
34. Pertaining to hours
35. "Funereal feeling"
36. Swindle
37. Boredom
38. Adult elvers

73. Human digit
74. What vampire does in a coffin
DOWN
1. TV tube in days of yore
2. Wagner or Powers in a TV classic
3. Isaac's firstborn
4. Mixes up
5. Geo-spacial positioning system, for short
6. Ginger cookie
7. Crème de cassis plus wine
8. Top dog
9. Musher's ride
10. Language of Tupi people
11. "Black cat, possibly"
12. ___ wig or ___ wrinkle
13. Oopsie daisy moments
14. Best part of cake?
15. "Halloween month"
16. Alters to be more useful
17. Type of coffee with alcohol
18. Forbidden
19. Howard of radio fame
20. Physicist Niels
21. Preakness, e.g.
22. Like cottage cheese
23. Piano student's exercise
24. "Leatherface's state"
25. Biz bigwig
26. To the point
27. "Scary story-related sensation"
28. Lyric poem
29. Choice word
30. Upright
31. Nary a soul
32. Give up
33. Skin soothing gel
34. Boring
35. Fussess
36. Departed
37. "RIP pots"
38. Like a bow string
39. Gunk
40. Fleur-de-___

CROSSWORD PUZZLE

THEME: HALLOWEEN ACROSS

- Bobby Fischer's game
- Reggae precursor
- Octagonal sign
- Haile Selassie's disciple
- Water-filled gorge
- Blue eyes, e.g.
- Jean of Dadaism
- Pariah, for medical reasons
- Pumpkin's Halloween precursor
- Famous magician who died on Halloween
- ___ mortuaire, or body bag in Paris
- Nordstrom's outlet
- "Now or Never"
- Good or bad and felt by others, sing.
- Haiku, e.g.
- Equal to distance divided by time
- Post-it slip
- Quickly fry
- Type of mountain goat
- Graveyard denizen
- Heart of the matter
- Tender spots
- Bailing twine, e.g.
- Icelandic epic
- Boss
- Greek muse's strings
- Up and down nod
- "Beware the ___ of March"
- One of seven, in eponymous 1995 film
- "Dead one"
- "Jordan Peele's scary 2017 film"
- Dodge
- Freud's concern
- Pertaining to hours
- "Funereal feeling"
- Swindle
- Boredom
- Adult elvers

73. Human digit
74. What vampire does in a coffin
DOWN
1. TV tube in days of yore
2. Wagner or Powers in a TV classic
3. Isaac's firstborn
4. Mixes up
5. Geo-spacial positioning system, for short
6. Ginger cookie
7. Crème de cassis plus wine
8. Top dog
9. Musher's ride
10. Language of Tupi people
11. "Black cat, possibly"
12. ___ wig or ___ wrinkle
13. Oopsie daisy moments
14. Best part of cake?
15. "Halloween month"
16. Alters to be more useful
17. Type of coffee with alcohol
18. Forbidden
19. Howard of radio fame
20. Physicist Niels
21. Preakness, e.g.
22. Like cottage cheese
23. Piano student's exercise
24. "Leatherface's state"
25. Biz bigwig
26. To the point
27. "Scary story-related sensation"
28. Lyric poem
29. Choice word
30. Upright
31. Nary a soul
32. Give up
33. Skin soothing gel
34. Boring
35. Fussess
36. Departed
37. "RIP pots"
38. Like a bow string
39. Gunk
40. Fleur-de-___

OMAHA STEAKS
GET THE GRILLER'S BUNDLE
INTRODUCTORY PRICE: \$79.99
4 (5 oz.) Butcher's Cut Filet Mignon
4 (4 oz.) Boneless Pork Chops
4 (4 oz.) Omaha Steaks Burgers
4 (3 oz.) Gourmet Jumbo Franks
4 (2.8 oz.) Potatoes au Gratin
4 (4 oz.) Caramel Apple Tartlets
Omaha Steaks Seasoning Packet, 99¢/4.99* separately
+ 4 MORE BURGERS FREE
THAT'S 20 COURSES + SIDES & DESSERTS!
ORDER NOW! 1.833.406.1259 ask for 632810XJ
www.OmahaSteaks.com/Family588
*Prices shown are suggested retail prices per pound. Standard S&H applied. ©2020 Omaha Steaks, Inc. Exp. 10/31/20

SUDOKU PUZZLE

FREE! Backed by American Standard's 140 years of experience
WALK-IN BATHTUB SALE! SAVE \$1,500
✓ Patented Quick Drain™ Technology
✓ Lifetime Warranty on the tub AND installation, INCLUDING labor backed by American Standard
✓ 44 Hydrotherapy jets for an invigorating massage
Limited Time Offer! Call Today!
866-612-7490
Or visit: www.walkinbath.com/spn

								3
5	9			3	7			8
6				7			4	
		4	6			1	9	
			3			1		
	1	6				9	3	
	2		5					7
8		1	2					3 6
4								

Fill in the blank squares in the grid, making sure that every row, column and 3-by-3 box includes all digits 1 through 9.

Regional News



Ray & Betty Lee Taylor recent photo.



Rocky Reach Dedication 1963.



Ray & Betty Lee with their children in 1954.

Celebrating Public Power through the generations

SUBMITTED BY RACHEL HANSEN
CHELAN COUNTY PUD

WENATCHEE – Going through some old boxes this summer, Ray Taylor discovered a check he wrote on July 27, 1957 to Chelan County Public Utilities District #1. The amount was for \$1.80 – the cost of electricity for two months.

Taylor has been a Chelan County PUD customer-owner for 66 years, first as a newly wed when he and his wife Betty Lee rented their first apartment together, and then as treasurer of his church, First Baptist, as it built a new facility on Maple Street in

Wenatchee. Ray was working at the National Bank of Commerce when Chelan County PUD leadership walked in to buy Rock Island dam from Puget Sound Energy.

The bank buzzed with excitement as executives flew in from New York to arrange the financing. A decade later, Ray and Betty Lee took their kids to the dedication of Rocky Reach in 1963. He still remembers the tours, festive food and high school band.

“One of the best things we’ve ever done in this county was to purchase the dams for ourselves, so the benefits would stay in the community,”

he said.

As we celebrated Public Power Week, Oct. 4-10, we want to honor our heritage as a nonprofit, community-owned utility. Your history is our history.

We look back with gratitude to a generation of community leaders who saw the value in public power. Imagine the courage it took for a small, rural county to build, buy and operate three hydropower projects in the 1950s.

That investment now produces five-to-six times the amount of energy we need to serve our 50,000 customer-owners. The surplus power

is sold on the power market. The proceeds are reinvested back into Chelan County to improve the quality of life.

Thanks to those founding leaders, residents of Chelan County enjoy clean, reliable energy, with some of the lowest rates in the nation, as well as high-speed internet and quality parks and trails.

Ray Taylor went on to lead Chelan County Medical Services Corporation, the first nonprofit in the area to offer prepaid medical plans.

When it sold to Blue Cross for \$2.1 million in the 1980s, he used the money to establish the Community Foundation



A copy of Ray's check for 2 months utility bill.

of North Central Washington.

That endowment has grown into \$65 million in assets – another example of an investment into the community that will pay dividends for generations to come.

During Public Power Week, we plan to feature more long-

tenured customer-owners of Chelan County PUD. If you have a story to share, please contact us at rachel.hansen@chelanpud.org or (509) 661-4320.

Here for you, providing the best value for the most people for the longest time chelanpud.org

State launches interactive data tool to track recovery efforts

OLYMPIA, WA – Leaders worldwide and locally are facing the worst economic downturn since the Great Depression.

The trajectory for recovery will be very different depending on where you live, who you are and what industry dominates the regional economy, among other complex factors.

“The economic impact of COVID-19 on individuals, families and businesses is like nothing we’ve ever seen before,” said Washington State Commerce Director Lisa Brown. “The depth and complexity of the challenge

we’re dealing with demands that we use data in new ways to help every family, every community and every industry get back on their feet, stronger and more resilient than before.” The dashboard is available to the public on the Commerce website.

Brown says local, regional and state leaders can more effectively focus economic recovery efforts by tracking the varying impact of the pandemic and needs through a prolonged slowdown.

The dashboard can be viewed at: <https://www.commerce.wa.gov/datadashboard/>.



One additional death from COVID-19

SUBMITTED BY
VERONICA FARIAS, CDHD

EAST WENATCHEE – Chelan-Douglas Health District (CDHD) reports an additional death from COVID-19. This brings the total number of deaths in Chelan County to 18, and seven (7) in Douglas County. The Chelan County

resident was a female in her 50s. The Health District's total COVID-19 deaths is now 25.

The Washington State Department of Health constitutes a COVID-19 death as a death occurring among those who have a positive COVID-19 test who did not die in a homicide, suicide, or accident (with the exception of accidental deaths

that explicitly list COVID-19 on the death certificate). The death certificate must also include COVID-19 or COVID-like terms (such as respiratory distress, pneumonia, respiratory failure, hypoxia, viral illness, or Severe Acute Respiratory Syndrome (SARS – with no other strain specified) as a cause or contributing factor to the death.

CDHD would like to remind everyone of the importance of all public health precautions during the COVID-19 pandemic. Anyone can have COVID-19 and not know they are contagious. COVID-19 is easily spread to close contacts, friends, family and loved ones before a person knows they are unintentionally spreading the virus. Please do your part to prevent the spread of COVID-19, continue to mask-up, social distance and avoid group gatherings. **Contact:** Phone: (509) 886-6427, E-mail: Veronica.Farias@cdhd.wa.gov

Don't forget to renew your subscriptions this Fall!

Not a subscriber? Call today to get your subscription started

Wenatchee Business Journal
Serving the North Central Washington Business Community for over 40 years!

- Business News - BNCW News
- Keeping Up With People
- Top Properties - Business Opinions

There's something for everyone in the local newspaper

- Local news
- Local school news
- Local sports
- Local arts & entertainment
- Opinion & editorials
- Meeting notices
- Event notices
- Public & legal notices
- Outdoor activities
- Health tips
- Online Access for all newspapers
- Breaking News

MASK UP & STOP COVID FROM SPREADING

WEEK OF SEPT 30 114.4/100K

WEEK OF OCT 7 136.8/100K

GOAL 25/100K

per 100K 0 25 50 75 100 125 150 175 200

Chelan PUD plans transmission pole replacement at Horse Lake Reserve

WENATCHEE – Trail users can expect short-term, intermittent closures along the Horse Lake Trail system from mid-October to mid-November while Chelan PUD replaces four wooden transmission line structures with steel poles.

The project is part of an effort to protect critical power lines from wildfire and reduce long-term maintenance needs in the area.

The project is being done in collaboration with the Chelan-Douglas Land Trust (CDLT).

“The PUD asked us to review their plans and determine the least disruptive method of getting this

essential work done,” said Hanne Beener, CDLT Trails Manager.

The intermittent trail closures are necessary for public safety while a helicopter flies in materials overhead, and crews operate heavy machinery in the area. Trail users will also see flaggers and signs at the work site.

“The construction timeline is tight between fire season and wet conditions in the fall,” says Steve Wickel, Transmission Engineering Manager at Chelan PUD.

“By using a helicopter, we can reduce the number of trips to the work site with materials and heavy

equipment and reduce impacts to the reserve. After the work is finished, the site will be seeded to help restore natural habitat for the long term.”

The work schedule is dependent on weather, which can be unpredictable in fall.

Before heading to the foothills, be sure to check chelanpud.org or cdlandtrust.org for trail status updates.

Contacts: Rachel Hansen, PUD Communications (509) 661-4320. Hanne Beener, Chelan-Douglas Land Trust, (509) 667-9708

Your Only Locally Owned Newspaper Company

Wenatchee Business Journal Subscription Rates for 12 months

\$24 1 year \$35 2 years - Chelan & Douglas Counties

\$28 1 year Outside Chelan/Douglas \$48 1 year Out of State

Community Newspaper Subscription Rates:

Print & Premium Online Access - In County - \$45 per year

ECHO RECORD MIRROR HERALD

Print Only - In County - \$40 per year

ECHO RECORD MIRROR HERALD

Online Only - In County - \$40 - E-Edition (Paper as printed)

ECHO RECORD MIRROR HERALD

Print Only - Out of County/In State - \$50 per year

ECHO RECORD MIRROR HERALD

Print Only - Out of State - \$52 per year

ECHO RECORD MIRROR HERALD

Out of State Premium/E-Edition Online - \$40 per year

ONE YEAR 52 ISSUES

Call us today! 509-293-6780

Name of person ordering: _____

Address: _____

Email: _____ Phone: _____

Send gift subscription to: _____

Address: _____

Email: _____ Phone: _____

Payment information (pay by credit card or check):

Credit Card number: _____ **Paying by check?**

Exp: _____ Visa Mastercard Discover AMEX Check enclosed:

MAIL TO:
NCW Media Inc.,
Attn: Circulation
PO Box 249
Chelan, WA 98816
OR CALL with your
Card # 509-293-6780
FAX: 509-682-4209
EMAIL: circulation@lakechelanmirror.com