



## Confluence Health honored with two major heart care-related awards

SUBMITTED BY ADAM McDONALD  
Confluence Health

**Wenatchee** - Confluence Health was recently awarded the 2023 Award of Excellence in Cardiovascular Surgery by the Foundation for Health Care Quality as a part of the Cardiac Care Outcomes Assessment Program (COAP) for the second year in a row.

COAP is a Washington State quality improvement collaborative with 32 participating sites throughout the state with the goal of supporting hospitals and clinicians in achieving the highest levels of patient care and outcomes. To achieve this award, a facility must perform at or better than the state average on at least six of eight key quality indicators in the prior assessment year.

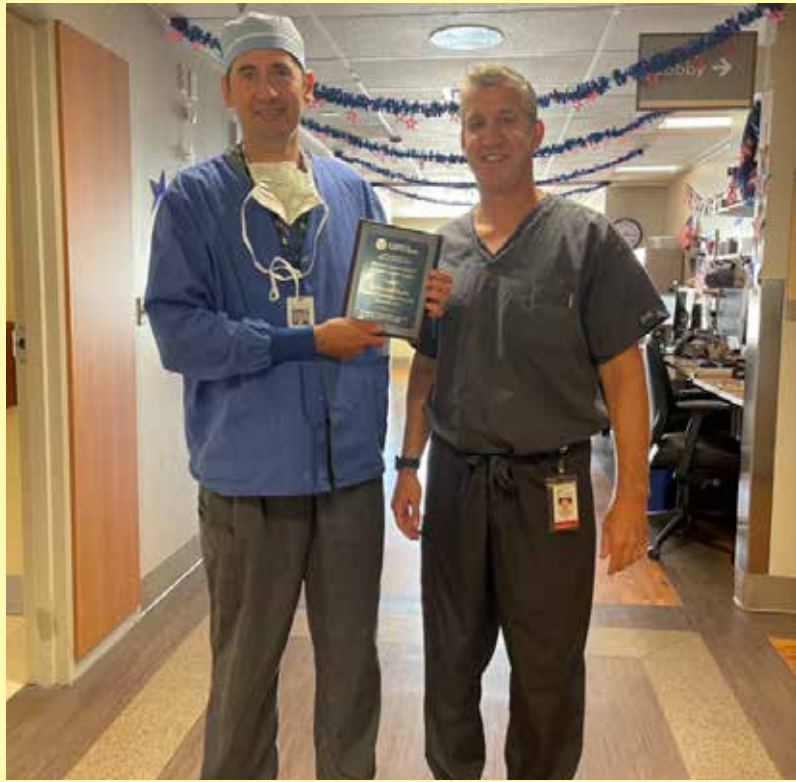
"We are very grateful," remarked Dr. Sasha Kraev, cardiothoracic surgeon at Confluence Health. "Cardiac surgery is the ultimate team sport, and it takes every single one of us. This could not have happened without true dedication from everyone."

In addition to the COAP Award of Excellence, Central Washington

Hospital (now Confluence Health Hospital - Central Campus) was also recognized for a performance award from the American Heart Association. Awarded the Mission:

Lifeline® NSTEMI Gold achievement award, this recognition acknowledges commitment to offering rapid, research-based care to people experiencing a specific type of heart attack known as a non-ST elevation myocardial infarction (NSTEMI). More than 546,000 people experience these types of dangerous heart attacks each year. Recipients of the award are chosen because of their high-quality care over the course of treatment, including EMS transport, hospital treatment, and discharge.

"I'm continually impressed by the care our emergency department, catheterization lab, and inpatient teams provide," remarked Dr. Geoff Harms, interventional cardiologist and cardiac catheterization lab medical director for Confluence Health. "We serve a large geographical area, and we couldn't do what we do without our critical access hospitals and EMS partners. It's a coordinated regional effort."



COAP Cardiovascular Surgery and AHA Mission Lifeline NSTEMI Gold Award with Sasha Kraev, MD and Derek Allen, PA-C.

## Campfire ban takes effect in portions of Chelan County

SUBMITTED BY STEPHEN RINALDI

Chelan County fire marshal

**WENATCHEE** - Beginning August 4, fire restrictions were raised to a Stage 2 level in parts of Chelan County, as was announced by the Chelan County fire marshal.

Fire restrictions were raised from Stage 1 to Stage 2 in the Chelan County Valley Zone, which includes the unincorporated lands and areas within the boundaries of Chelan County fire districts 1, 5, 6, 7 and 8.

Stage 2 restrictions include a ban on campfires in the Valley Zone. In addition, under Stage 2 restrictions, target shooting is only allowed at a gun range; hunting is permitted in open areas.

In addition, the Valley Zone fire hazard level, which reflects how fire-prone an area is, will be elevated to "extreme," the highest level of the county's four fire hazard ratings (moderate, high, very high and extreme).

"The Valley Zone of Chelan County, which includes our lower elevations, is dry and highly combustible," said Stephen Rinaldi, Chelan County fire marshal. "I hesitate to even say this, but we've had a relatively quiet wildfire season compared to our neighbors. Don't let this fool you or lull you into complacency. We're reaching those perfect storm conditions that are ideal for a major wildfire."

Chelan County's fire code divides the county into two zones - the Valley and Mountain zones - because sometimes fire conditions are different in its mountains and the valleys, Rinaldi explained. A map of the two zones is available on the fire marshal's website: [www.co.chelan.wa.us/fire-prevention-and-investigation/pages/fire-danger-ratings-restrictions](http://www.co.chelan.wa.us/fire-prevention-and-investigation/pages/fire-danger-ratings-restrictions)

In the Mountain Zone, which includes the unincorporated lands and area within the legal boundaries of Chelan County fire districts 3, 9 (Lake Wenatchee Fire and Rescue) and 10, fire restrictions will remain at a Stage 1. The Mountain Zone also will remain at a "high" fire hazard level. Stage 1 restrictions allow for campfires in an approved pit or device. The use of grills or barbecues is still allowed in both zones.

Rinaldi warned that many state and federal lands are also beginning to ban campfires. People going camping should check with the campground they are visiting, or visit the Bureau of Land Management, U.S. Forest Service (Okanogan-Wenatchee National Forest) or the Washington State Department of Natural Resources websites to determine if campfires are allowed.

People who have questions about the Chelan County restrictions can visit the Chelan County Fire Marshal's website:

- Chelan County Fire Stage Restrictions: [www.co.chelan.wa.us/news/article/current-fire-hazard-designation-and-restrictions](http://www.co.chelan.wa.us/news/article/current-fire-hazard-designation-and-restrictions)
- FAQ: [www.co.chelan.wa.us/fire-prevention-and-investigation/pages/fire-danger-ratings-restrictions](http://www.co.chelan.wa.us/fire-prevention-and-investigation/pages/fire-danger-ratings-restrictions)

During wildfire season, a Fire Advisory Board that consists of representatives from local fire districts, the Chelan County Fire Marshal's Office, state and federal partners meet weekly to determine if fire hazard levels and fire restrictions should be changed. The fire marshal can temporarily designate a fire hazard area and impose travel and activity restrictions. Such designations and restrictions shall be in effect until the next regular meeting of the Board of Chelan County commissioners.

## When will we "fully fund" education?



COMMUNITY VOICES  
Brad Hawkins

### Strategic investments, not just more money, are key for business growth and workforce development

As we begin another school year, I often get asked about "fully funding" education, despite the record state funding provided over recent years. Education spending has significantly increased since the State Supreme Court's landmark 2012 McCleary decision on school funding. Washington now invests 44 percent of its nearly \$70 billion state budget into K-12 education. When the Legislature later satisfied the McCleary case, it also successfully limited school district property tax levies, but those limits were later removed.

As state funding and property taxes further increase, people continue to debate school funding. The answer to

the "full funding" question actually requires a longer explanation about what constitutes "education" and an acknowledgement of expanding school district services. As state and local taxpayers continue to invest more into our schools, the business community should expect better returns on those investments and a more capable workforce.

### Schools receive local, state, and federal dollars

Our state's school funding system was already quite complicated prior to McCleary and still remains difficult to understand. Generally speaking, school districts receive state funding based on their total student enrollment. In addition to state dollars, school districts also receive funding from local and federal sources. Beyond their local,

School funding has significantly increased in recent years, both from state investments and school district property tax requests. Districts received \$8,742 per student for the 2012-13 school year and received approximately \$15,462 for the 2022-23 school year.

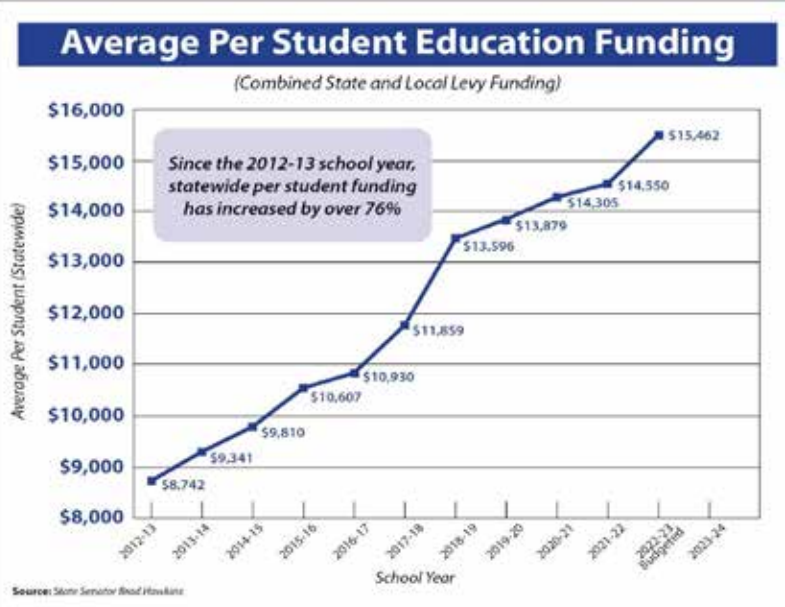
state, and federal funding, school districts can apply for various grants to supplement traditional sources of funds.

### School district levies continue to increase

Local funding to school districts is provided by voter-approved

property tax levies. While I am a strong supporter of education, I am concerned about the growing property tax burdens on residents and whether school districts can or should provide the expanded services many districts are now taking on. As a result of changing state policies, increased

CONTINUED TO PAGE A2



## City of Leavenworth Mayor preliminary voting as of August 4, 2023

Rick Brinkman



233  
or  
25.8%

Becki Subido



211  
or  
23.37%

Carl J. Florea



452  
or  
50.06%

7 write-in votes. Total of 903 voting with next counting on August 15.

### Inside The ECHO this week

Section A

Sheriff Reports .....3  
Bulletin Board.....3  
AA Meetings.....3  
Church Guide.....4

Section B

Michelle's Kitchen Table....1  
Rep. Keith Goehner.....1  
Outdoors Report.....4  
Business Directory.....4

Inserts:

Dan's Market Safeway



P.O. Box 39,  
Leavenworth, WA 98826  
Phone: 509-548-5286  
[www.leavenworthecho.com](http://www.leavenworthecho.com)





# Charting a new course: Confluence Health announces mission and vision statements

SUBMITTED BY ADAM MACDONALD  
Confluence Health

**Wenatchee** - Shared values and goals are essential to the strong foundation of any organization. This is especially true for a local healthcare provider, which has meaningful, long-lasting outcomes on communities and families now and into the future. That is why Confluence Health, North

Central Washington's largest healthcare provider, is so excited to unveil its new mission and vision statements.

The new mission of Confluence Health is: "Local care by and for our community." The new vision is: "To serve our community with compassionate care through our dedication to: enabling joy and pride in our work, focusing on local

sustainability, ensuring access for all, and committing to excellent care and service."

"These new mission and vision statements serve two very different but important purposes," said Dr. Andrew Jones, CEO for Confluence Health. According to Jones, the mission statement is what makes Confluence Health unique and why it opens its doors each day, while the vision statement provides

strategic guidance on where the organization is headed.

"Not only do these new statements set a course for Confluence Health now, but they will guide us in the years to come," added Jones. "To put it simply: our mission is our heart, and our vision is where we are heading."

In shaping the new mission and vision statements, the leadership of Confluence Health was faced with the challenge of using a handful of words to convey the larger values not only of the organization itself, but also of its staff and providers who make it all possible.

In order to hear from as many stakeholders as possible, leadership held multiple employee forums in addition to several leadership, board, and patient advisory discussions.

Throughout the extensive development process, one of the most consistent pieces of feedback received from focus groups and surveys was the importance of community.

"At Confluence Health, we are the community we serve," Jones explained. "The people we care for are our friends, neighbors, and families. Plus, the sense of community we have with our co-workers and colleagues makes this a great place to work. Community matters."

Jones also acknowledged that Confluence Health should continue to strive to create an excellent experience for patients and employees, saying, "We recognize we have a lot of work to become the care provider and employer of choice in the region and beyond. We believe the new mission and

vision statements can be used as our guide to get there."

*About Confluence Health: Confluence Health serves the largest geographic region of any healthcare system in Washington State, covering over 12,000 square miles of Okanogan, Grant, Douglas, and Chelan counties. Confluence Health is one of only two locally-lead healthcare systems in the state with the purpose of maintaining availability and access to high-quality, cost-effective healthcare services for North Central Washington. The Confluence Health Board of Directors provides governance for Confluence Health and includes nine community board members and six physician board members.*

## Landowner Hunting Permit Program application period now open

SUBMITTED BY OTTIE McCLELLAN  
Washington Department of Fish and Wildlife

**OLYMPIA**—The Washington Department of Fish and Wildlife (WDFW) is now accepting applications for the Department's Landowner Hunting Permit Program for the 2024-2026 season. Landowners must submit applications by August 15. A copy of the application packet, details on how to submit an application, and more information about the program is available on WDFW's website or by contacting the Private Lands Access Program Manager (360-280-

3020). WDFW's Private Lands Program is focused on working with landowners throughout Washington to provide public recreational opportunities. WDFW works within formal agreements with landowners to outline and develop a plan that supports hunting and other public access and/or habitat conservation on enrolled private lands. WDFW has been helping private landowners open their lands to public hunting since 1948. The Department helps landowners manage hunting on their property by providing technical assistance and signage. Many of the private landowners who are part of the

private lands access program also get assistance from WDFW staff to help improve fish and wildlife habitat on their lands. Department staff are available to help landowners plan habitat improvements and may also help landowners apply for or implement federal- or state-funded habitat improvement programs. For more information, visit WDFW's Private Lands website.

*WDFW works to preserve, protect, and perpetuate fish, wildlife, and ecosystems while providing sustainable fish and wildlife recreational and commercial opportunities.*

### Sen. Brad Hawkins

CONTINUED FROM PAGE A1

public expectations, and school board decisions, many districts are now providing a range of childcare, social services, meals, healthcare, and early learning services in addition to their K-12 academic responsibilities. There is no doubt that a variety of needs exist within communities and their schools but defining the role of schools – and determining who can provide support services most efficiently – are key questions.

### Expanded services and increasing costs

With school district services greatly expanding, it is becoming increasingly difficult to differentiate where school responsibilities end and where family and community responsibilities begin. School district scope of service changes also generate philosophical debates related to education policy, funding obligations, and parental rights. If school districts continue to expand their services, it will become increasingly difficult – if not impossible – to ever "fully fund" education. It is not operationally realistic or fiscally sustainable to transition all of society's responsibilities into our school system.

### Education funding in 2023-2025 budget

As with any budget or major legislation, there are always things to support and areas for improvement. With an operating budget that has now grown to nearly \$70 billion with 44 percent dedicated to K-12 education, this is the case with Washington's education spending. During the 2023 legislative session, approximately \$3 billion was added to education funding beyond the baseline level. Two major bills were approved that constituted the bulk of this additional investment: House Bill 1436 (special education funding) and Senate Bill 5650 (salary inflationary increases). While these funding changes are certainly needed and appreciated, the approved state budget spends significantly more on K-12 education without making substantive improvements to address academic deficiencies.

### COVID "learning loss" still an issue

Many students are struggling to return to grade level following the COVID pandemic. Junior high teachers I met with recently shared that many students are two-to-four years behind grade level in math, leaving teachers wishing they had elementary math curriculum. For me, getting students to grade

level should be the state's top priority. Students at grade level who previously exceeded their grade level should also continue to be challenged. Without making academics the top priority, the state will just continue to spend more and more money without improving the overall system.

As a former school board member and supporter of public education, I believe many challenges still exist in our education system. These challenges remain despite significant funding increases, many of which are being directed at broader student needs. To maximize learning opportunities, restore academic growth in our schools, and prepare students to succeed in a global workforce, lawmakers need to have thoughtful conversations about making improvements in education beyond just more spending. The expanding scope of services school districts are attempting to provide and increased property tax pressures must be part of that discussion.

*Sen. Brad Hawkins is State Senator of the 12th Legislative District. He serves the ranking Republican member on the Senate's Early Learning and K-12 Education Committee. Prior to his election to the Legislature, Hawkins served for a combined 10 years on the North Central Educational Service District and Eastmont School boards.*

## A musical poking fun at musicals? Yes, please!!



SUBMITTED PHOTO

The cast of *Drowsy Chaperone* invites you to their remaining performances August 10, 15, 18, 24, 31 and Sept. 2, at Ski Hill. Tickets still available at [www.leavenworthsummertheater.org](http://www.leavenworthsummertheater.org)

SUBMITTED BY LST

Winner of five Tony Awards, *The Drowsy Chaperone* is a loving send-up of the Jazz Age musical, featuring one show-stopping song and dance number after another.

To chase his blues away, a modern-day musical theater

addict drops the needle on his favorite record – the 1928 musical comedy *The Drowsy Chaperone*.

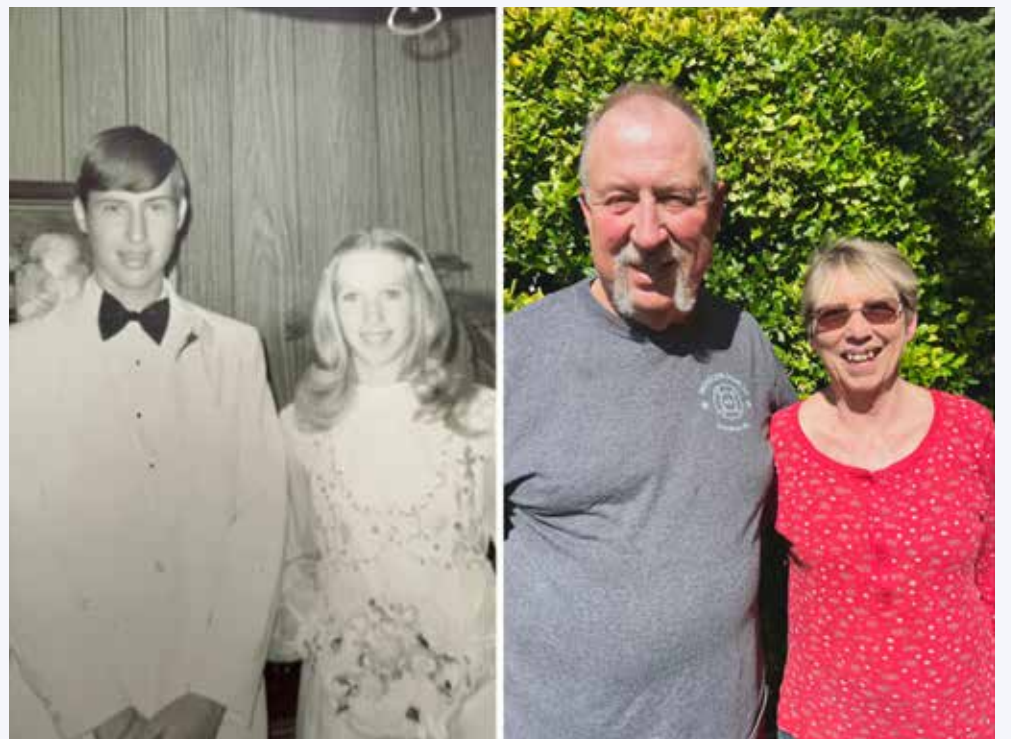
From the crackle of his hi-fi, the musical magically bursts to life on stage, telling the tale of a pampered Broadway starlet who wants to give up show business to get married,

her producer who sets out to sabotage the nuptials, her chaperone, the debonair groom, the dizzy chorus girl, the Casanova, and a pair of gangsters who double as pastry chefs.

Hijinks ensue... There might even be a plane that flies in. Don't miss it.

### 50<sup>th</sup> Anniversary

## Kim and Rosalie Kozelisky



SUBMITTED PHOTO

Kim and Rosalie were married on July 28, 1973 in the backyard at Rosalie's parents' home in Wenatchee, WA. They have two daughters-Melanie (David) Burlingame of Leavenworth and Lisa (Keith) Hiatt of Leavenworth, they have six grandchildren, Jack, Ellie, Emma, Grace and Macie and Isaac. They are residents of Leavenworth for 48 years and owners of Upper Valley Excavating since 1980. Congratulations on fifty years of love, commitment, and the beautiful legacy you have created for your family and future generations!

**LAKE CHELAN PIRATE FEST**

PIRATE ENTERTAINMENT, FOOD, HELICOPTER RIDES  
CARNIVAL RIDES, GAMES - FUN FOR THE WHOLE FAMILY

**ALL DAY WRIST BAND**

**AUGUST 17-20 2023**

ALL DAY WRISTBANDS  
PRE-SALE ONLY

LAKE CHELAN PIRATE FEST  
PROUDLY BY  
**Lake Chelan**

LOCATION  
LEFFLER FIELD  
440 E WAPATO WAY  
MANSON / LAKE CHELAN

MORE DETAILS CALL  
**(509) 682-9150**

[www.LakeChelanPirateFest.com](http://www.LakeChelanPirateFest.com)

- **Downtown Steering Committee**, 10 a.m., meet in the Council Chambers and Zoom. (4th Tues.)
- **Housing Committee, Public Safety Committee, Finance Committee: No meetings**, reports are in Council packets. police and fire representatives speak at the beginning of the meeting. (4th Tues.)
- **City Council Study Session:** 5:30 p.m. City Hall Council Chambers, (2nd Floor) and Zoom. (2nd & 4th Tues.)

**CITY OF LEAVENWORTH**  
THE BAVARIAN VILLAGE  
WA

- **City Council Evening Meeting:** 7 p.m., City Hall in Council Chambers, and Zoom. (2nd & 4th Tues.)
- **Planning Commission:** 7 p.m., Council Chambers and Zoom. (1st Wed.)
- **PRSA Meetings:** 3 p.m., City Hall Conference Room (Upstairs) (2nd Wed.), every other month (May, July, Sept., Nov., Jan., and Mar.).
- **Design Review Board:** 3 p.m., meets in the Council Chambers and on Zoom. (2nd & 4th Wed.)
- **Parking Advisory Committee:** 4 p.m., meet in the City Hall Conference Room and on Zoom. (3rd Thurs.)



**COMMUNITY BULLETIN BOARD**

Local, Regional Community News & Events

- Any non-profit 501(c)-(3) group, person(s).
- Must provide: full name, city, phone number.
- Items pertaining to local events that are free or minimum charge.

- Want to place Your Community News Online? Go to NCWMARKET.COM 24/7
- Garage and Yard Sale Ads are paid events, please email: classifieds@leavenworthecho.com or place online at NCWMARKET.COM
- For info call: Leavenworth: 509-548-5286, email: reporter@leavenworthecho.com
- Cashmere: 509-548-5286, email: Reporter@cashmerevalleyrecord.com

**THE LEAVENWORTH ECHO**

© 2023 NCW Media, Inc.  
PO Box 39  
Leavenworth, WA 98826-0039  
Phone: 509-548-5286

website:  
www.ncwmarket.com  
www.leavenworthecho.com  
e-mail:  
Reporter@leavenworthecho.com

**Publisher**  
Carol Forhan • 509-548-5286  
publisher@leavenworthecho.com  
Bill Forhan publisher ex officio

**Reporter/Photographer**  
Reporter@leavenworthecho.com  
Reporter@cashmerevalleyrecord.com

**Advertising Sales Manager**  
Carol Forhan  
509-548-5286  
carol@leavenworthecho.com

**Creative Services**  
Carol@leavenworthecho.com

**Front Office**  
**Classified / Legal Notices**  
**Obituaries/Memorials**

Classifieds@leavenworthecho.com  
Online ads at NCWMARKET.COM

**Circulation for all NCW Media, Inc. newspapers.**  
1-509-293-6780

circulation@lakechelanmirror.com

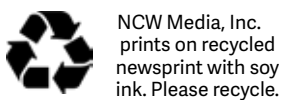
**DEADLINES:**  
Calendar Listings: Noon, Friday  
News Submissions: Noon, Friday  
Letters to the Editor: Noon, Friday  
Display Advertising: Noon, Friday  
Legal Notices: Noon, Friday  
Classified Ads: Noon, Friday

**SUBSCRIPTIONS:**  
In Chelan County (yearly) \$40.00  
\$5.00 to include online subscription  
In State-Out of County (yearly) \$50.00  
Online E-edition only \$40.00

The Leavenworth Echo does not refund subscription payments except to the extent that it might fail to meet its obligation to publish each week, in which case the cost of the issues missed would be refunded as an extension. Subscriptions may be transferred to another individual or organization. 1-509-293-6780

**SERVICES:**  
Back issues are available up to one year after publication for a fee.

The Leavenworth Echo (USPS 308 160) is published every Wednesday by NCW Media, Inc. P.O. Box 39, Leavenworth, WA 98826. Telephone: 509-548-5286. Periodical postage paid at Leavenworth, Wash. (and additional mailing offices) Postmaster: Send address corrections to: The Leavenworth Echo, P.O. Box, 39, Leavenworth, WA 98826-0039



**Letters policy**

The Leavenworth Echo welcomes letters to the editor. All letters must be accompanied by the author's name, a home address and a day-time phone number (for verification purposes only). Letters may be edited for length, clarity, accuracy and fairness. No letter will be published without the author's name. Thank you letters will only be printed from non-profit organizations and events. We will not publish lists of businesses, or lists of individual names. Email your letters to Publisher@leavenworthecho.com or Reporter@leavenworthecho.com

**Corrections**

The Leavenworth Echo regrets any errors. If you see an error, please call 509-548-5286. We will publish a correction on this page in the next issue.

**Contact the listed organizations or events for updates.**

**COMMUNITY CALENDAR**

**Wednesday**

**Children and Youth Program.** 6:30-8 p.m., 4th-12th grade, Leavenworth Church of the Nazarene, 509-548-5292.  
**Alpine Water District, meets at the Lake Wenatchee Fire and Rescue,** 1 p.m. Contact Anne Mueller, 425-238-3935.  
**Senior Center, Lunch, noon, \$8 per meal. RSVP 509-548-6666.**  
**Ukulele Circle,** 5:30- 6:30 p.m. every Wednesday at the Peshastin Library. Please come 15 minutes early to tune and get sheet music.  
**Cascade Medical Board, 4th Wednesday of every month (with a couple exceptions), August 23, September 27, October 25, November 15, and December 20, 5:30 p.m.**

**Thursday**

**Leavenworth Chamber of Commerce, 8 a.m. Call Chamber, 509-548-5807. Everyone is invited to attend as a guest. Email Troy@leavenworth.org for meeting information. (1st & 3rd Thurs.)**  
**Leavenworth Lions Club, For more info. President Steve Alford, 509-548-4505, or email leavenworthlionsclubwa@gmail.com**  
**Peshastin Community Council meeting, 7 p.m. Peshastin Memorial Hall. (2nd Thurs.)**  
**The Wenatchee Valley Doll Club, 11:30 a.m. Call Yvonne, 509-663-7991. (2nd Thurs.)**  
**Caregiver Support Group, 2-3:30 p.m. For Caregivers of those with Memory Loss. The Henry Building, 120 Cottage Ave. Cashmere. Contact Carmen Gamble, 509-393-0789. (1st & 3rd Thurs.)**  
**Greater Leavenworth Museum board meeting 3-5 p.m. Everyone is invited as a guest contact: Matt@leavenworthmuseum.org for meeting information. (2nd Thurs.)**

**Friday**

**Veteran Service Office, For information contact Tony Sandoval, 509-664-6801 or email: Tony.Sandoval@co.chelan.wa.us**  
**Leavenworth Rotary Club, In person at Kristalls at Noon. Call President Mahala Murphy-Martin, 1-206-227-1576, for more information.**  
**Senior Center: Bingo 6 p.m. Call 509-548-6666. Facebook & website: Leavenworthseniors@gmail.com**

**Monday**

**Upper Valley Free Clinic, open every Monday to evaluate urgent health needs. Downstairs at Cascade Medical, 6:30 -8:00 p.m. Call UVMEND, 509-548-0408 for more information.**  
**Leavenworth Mosquito District board meeting, 7 p.m. via ZOOM link posted at https://leavenworthmosquitocntrl.org/activity-calendar.html or contact Jenny 509-548-5904 (1st and 3rd Mon.)**  
**Cascade School board meetings, 7 p.m., Agenda can be found at https://www.cascadesd.org/Page/166. (2nd & 4th Mon.)**  
**Chelan Douglas Republican Women, Monthly meeting and luncheon 1st Monday of the month (unless it's a holiday), \$21. for lunch, \$8. for sitting only. 11 a.m. check in starts, noon for meeting and speaker. Wenatchee Convention Center 121 N. Wenatchee Ave. For information and reservations, please call, Angela Dye, President, 509-668-1105 (1st Mon.)**

**Tuesday**

**Peshastin Water District, 5:30 p.m. For meeting location, contact Steve Keene, 509-548-5266. (2nd Tues.)**  
**Icicle & Peshastin Irrigation Districts Meeting Current meeting time is 8 a.m. at 5594 Wescott Drive. Call Levi Jantzer, cell 509-607-0278, 509-782-2561, or levi.ipid@nwi.net (2nd Tues.)**  
**Cascade Education Foundation, Contact: CEF@cascade.org**  
**LWSC Alpine Committee, 7 p.m., Ski Hill Lodge. Call 509-548-5477. (1st Tues.)**  
**Leavenworth Masons, 7:30 a.m., Zarthan Lodge No. 148, Leavenworth Senior Center upstairs. www.leavenworthmasons.org. (1st Tues.)**  
**Cascade Garden Club, 1 p.m., at a member's home or other venue. Call President Claudia, 509-662-7706. (3rd Tues.)**  
**The Chelan County Cemetery District #2 (Peshastin) meets monthly at 6 p.m., at the Memorial Hall, located at 10204 Main Street. (2nd Tues.)**  
**Senior Center, Exercise, 11 a.m.-Noon. Tues & Thurs. 509-548-6666. Facebook & Website: Leavenworthseniors@gmail.com**  
**Music, call Steve, 509-548-7048. (1st and 3rd Tues.)**

**NCW Libraries**

Libraries will continue to offer a wide variety of resources and programs online at ncwlibraries.org and its Facebook page. Go to NCWLIBRARIES.ORG or 1-800-426-READ (7323) for more information, and updates.  
**Leavenworth Public Library. Located at 700 Hwy. 2, Call 509-548-7923 or online Leavenworth@ncwlibraries.org Open on Tues., 10-5, Wed., 11-7, Thurs., 10-7, Fri., 10-5 Sat., 10-2. Closed Sun. and Mon.**  
**Peshastin Public Library. Located at 8396 Main St., Peshastin. Call: 509-548-7821 or Peshastin@ncwlibraries.org Open Tues., 10-1:30; and 2:30-7, Wed., 10-2, and 2:30-7, Thurs., and Fri., 1-5:30 and Sat., 10 a.m.-2 p.m. Closed Sun. and Mon.**

**Other events**

**The Greater Leavenworth Museum, formerly known as the Upper Valley Museum. Now open daily 11-4. Check their Facebook page or website at http://www.leavenworthmuseum.org www.leavenworthmuseum.org for updates and information.**  
**Leavenworth Fish Hatchery, 509-548-7641. Trails and grounds are open every day to the public. Please park outside the gate. All animals must be on a leash.**  
**Note: Some meetings or events may be rescheduled due to holidays or other closures. Please call and check with that organization listed.**  
Please note that if your organization changes dates, or hours please send us your updates to reporter@leavenworthecho.com or call 509-548-5286. Otherwise we are not responsible for any misinformation.

**MEETINGS SCHEDULES FOR AA, ALANON, CELEBRATE RECOVERY**

**AA Meetings:**  
Call for the Zoom link to Leavenworth AA meetings: 541-480-8946  
Call for the Zoom link to Leavenworth AlAnon meetings: 509-548-7939  
509-548-1627, 548-4522, 664-6469, 206-719-3379  
Sunday 7 p.m., Leavenworth Senior Center, 423 Evans St.  
Tuesday, 7 p.m., Light in the Valley, 8455 Main Street, Peshastin  
Wednesday, 7 p.m., Leavenworth Senior Center, 423 Evans St.  
Thursday, 1 p.m., Leavenworth Senior Center, 423 Evans St.  
Friday, 7 p.m., St. James Episcopal Church, 222 Cottage Ave.  
**Alanon Meetings, Call 509-548-7939**  
**Renewed Celebrate Recovery, Every Tuesday at 6:30 p.m. at Leavenworth Church of the Nazarene, 111 Ski Hill Drive. Come experience God's grace for all of life's hurts, habits and hang-ups. For more information: CelebrateRecoveryLCN@gmail.com or 509-596-1510.**

*Leavenworth*

**Join the Leavenworth Village Voices**

If you have music in your heart and a song on your lips, the Leavenworth Village Voices (LVV) would like to invite you to join us at the annual Season Opener Picnic on Monday, August 14, at 6:30 p.m. in Lions Club Park in Leavenworth. LVV will provide the food and beverages. Come along to have your questions answered about Leavenworth's fantastic community choir. Find more information at www.leavenworthvillagevoices.org or on Facebook.

**Summer activities at the libraries**

**Paint in the Park** with the Leavenworth Library on Wed., Aug. 16. Drop by between 2-4 p.m. to explore various painting techniques including spin art, marbling, gelli printing and more for all ages. Dress for a mess, in Lions Club Park. Free, for all ages.

**BEER & BOTS** Adult STEM Night on Thurs. Aug. 17, 6-8 p.m. at Wenatchee River Institute's Red Barn

with NCW Libraries STEM Librarian. Embrace your inner scientist, quench your thirst for knowledge, and toast to new friendships at our ADULT STEM program. 509-548-7923 or Leavenworth@ncwlibraries.org

**Benefit for The Dwelling Place**

Raise the Roof Golf Tournament Fundraiser on August 8 at Leavenworth Golf Club

For more information and to register go to raise-the-roof.perfectgolfevent.com

Call American Exterior Solutions with any questions 509-888-ROOF (7663)

Come play golf as an individual or a team. Also accepting donation for auction items

A home for adults with developmental disabilities to live full joyful lives. To learn more about

The Dwelling Place visit website dwellingplaceleavenworth.org.

**Village Art in the Park**

Nena Howell's new art booth will be up at Village Art in Park for 8 days starting Aug. 3- Aug. 13. Come see her, and

all the other talented artists at the park. Nena has several new Leavenworth-themed works to unveil, and just wanted to let you know in advance. Hours are Thursdays, 9 a.m.- 5 p.m. and 6 p.m. on Friday and Saturdays.

*Regional*

**G.O.O.F.Y Gathering of Old Fogies**

The yearly gathering of classmates of Leavenworth High School will be September 6, from 10 a.m.-3 p.m. at Walla Walla Point Park, Shelter #2. Please bring a main dish, salad, or dessert. Coffee and water will be provided. Potluck will be served at noon. Contact Helen Rayfield at 509-888-5892.

**Cascadia Conservation District Regular Board Meeting**

Will be held on Friday, August 18, at 1:30 p.m. Will be held at our new office space on 1350 McKittrick St. More information and instructions will be available on our web site at cascadiacd.org or by calling the District at 509-436-1601.

**Sheriff/Fire/EMS**  
The sheriff's report is compiled from public records as provided by the Chelan County Sheriff's Office. The publisher cannot certify the complete accuracy of the information provided.

**July 28**  
00:25 Vehicle Prowl, 170 US Hwy. 2  
10:31 Parking/ Abandoned Vehicle, 3517 Hansel Ln., Peshastin  
10:56 Suspicious Circumstance, Meadow Creek  
11:03 Traffic Offense, 18894 Alpine Acres Rd., Plain  
11:12 Non-injury Accident, US Hwy. 2 and 12th St.  
11:34 Scam, 9256 E. Leavenworth Rd.  
12:07 Animal Problem, Colchuck Lake trail  
14:47 Unknown-injury Accident, US Hwy. 2 and River Bend Dr.  
15:48 Property, 214 8th St., Larch  
15:59 Non-injury Accident, Front St. and Chumstick Hwy.  
16:11 Traffic Offense, Chiwawa Loop Rd., and Pine Ct.  
16:12 Runaway, 263 Mine St.  
16:29 Public Assist, 22744 Lake Wenatchee Hwy.  
17:02 Harassment/ Threat, 1326 Commercial St.  
18:27 Non-injury Accident, 21328 SR 207, Headwaters, Lake Wenatchee  
19:19 Disturbance, 116 River Bend Dr., Safeway  
19:49 Weapons Violation, 18150 River Rd., Plain

**July 29**  
02:06 Suspicious Circumstance, 810 US Hwy. 2, Bavarian Lodge  
07:53 Welfare Check, 12145 W. Shugart Flats Rd., Lake Wenatchee  
08:11 Domestic Disturbance, 15361 US Hwy. 2, 59er Diner, Lake Wenatchee  
09:36 Suspicious Circumstance, 111 Ski Hill Dr.  
10:02 Vehicle Prowl, 220 9th St., Obertal Mall  
12:54 Public Assist, 100 Ski Blick Strasse  
13:33 Theft, 144 W. Benton St.  
14:29 Parking/ Abandoned Vehicle, Icicle Rd. MP 1  
18:10 Animal Problem, 1000 A Front St.  
18:12 Animal Problem, 9193 Icicle Rd.  
18:26 Public Assist, Icicle Rd. MP 11  
19:16 Public Assist, 228 Chumstick Hwy.  
20:45 Property, 1010 Main St., Barn Beach

**July 30**  
11:10 Traffic Offense, Prospect and Mine Streets  
11:40 Traffic Offense, 980 US Hwy. 2, Cashmere Valley Bank  
13:12 Hazard, 9342 Icicle Rd., Adventure Park  
16:29 Public Assist, 22744 Lake Wenatchee Hwy., Lake Wenatchee  
20:05 Non-injury Accident, Chiwawa Loop Rd. MP 5, Lake Wenatchee  
21:56 Extra Patrols, 7900 Mountain Home Rd.

**July 31**  
05:55 Alarm, 913 Front St., South  
06:12 Animal Problem, 116 River Bend Dr., Safeway  
08:32 Domestic Disturbance, 13995 Brae Burn Rd., Lake Wenatchee  
08:53 Parking/ Abandoned Vehicle, 9700 block Mountain Home Rd.  
09:18 Public Assist, Plain area  
11:38 Malicious Mischief, 585 US Hwy. 2  
12:08 Non-injury Accident, Snow Lakes Trailhead  
12:58 Lewd Conduct, 200 Ward Strasse  
14:11 Animal Problem, Lynn, and School Streets, Peshastin  
15:05 Agency Assist, 9327 E. Leavenworth Rd.  
20:37 Public Assist, Leavenworth area  
20:57 Attempt to Locate/ Contact, Leavenworth area

**August 1**  
05:42 Alarm, 913 Front St., South  
08:35 Burglary, 3400 N. Nason Rd., Lake Wenatchee  
09:20 Disturbance, 100 Ward Strasse  
09:37 Suspicious Circumstance, 225 Central Ave., Osborn Elementary  
10:26 Hazard, 800 block Edelweiss St.  
10:35 Non-injury Accident, 11734 US Hwy. 2, Safe Havens Auto  
10:53 Non-injury Accident, 116 River Bend Dr., Safeway  
11:40 Public Assist, 13995 Brae Burn Rd., Lake Wenatchee  
12:12 Property, 800 block Front St.  
14:56 Sex Offense, 17458 N. Shore Dr., Lake Wenatchee  
15:16 Public Assist, 700 US Hwy. 2, City of Leavenworth  
17:41 Trespassing, 11525 North Rd.  
21:27 Traffic Offense, 10190

Chumstick Hwy.  
22:00 Welfare Check, 219 West St.

**August 2**  
00:18 Animal Problem, 24610 Spur St., Plain  
09:02 Fraud/ Forgery, 105 Pine St.  
09:27 Non-injury Accident, US Hwy. 2, and River Bend Dr.  
09:28 Extra Patrol, 13995 Brae Burn Rd., Lake Wenatchee  
10:21 Attempt to Locate/ Contact, Enchantments area  
11:39 Parking/ Abandoned Vehicle, 12613 Prowell St.  
15:27 US Hwy. 2 MP 104, Peshastin  
18:07 Parking/ Abandoned Vehicle, 1534 Alpansee Strasse  
19:24 Public Assist, 22744 Lake Wenatchee Hwy., Lake Wenatchee  
20:58 Parking/ Abandoned Vehicle, 1534 Alpansee Strasse  
22:16 Noise Complaint, 100 Ward Strasse  
22:58 Public Assist, Snow Lakes trailhead

**August 3**  
05:05 Hazard, US Hwy. 2, and Icicle Rd.  
06:45 Suspicious Circumstance, 9255 Foster Rd., BJ's Food  
07:43 Juvenile Problem, 11425 Clark Canyon Rd.  
10:22 Assault, 22494 Chiwawa Loop Rd., Lake Wenatchee  
11:09 Trespassing, 17965 Chumstick Hwy.  
11:54 Trespassing, 14 Cabin Creek Ln., Peshastin  
12:38 Alarm, 34280 S. Nason Rd., Lake Wenatchee  
14:31 Public Assist, Leavenworth area  
15:24 Theft, 285 US Hwy. 2  
16:20 Public Assist, 13995 Brae Burn Rd., Lake Wenatchee  
16:42 Domestic Disturbance, 22494 Chiwawa Loo Rd., Lake Wenatchee  
17:41 Hazard, Division and Commercial Streets  
18:01 Missing Person, Colchuck Lake  
19:43 Public Assist, 100 Ski Blick Strasse  
20:14 Alarm, 960 US Hwy. 2  
20:51 Suspicious Circumstance, Front and 12th Streets  
21:47 Domestic Disturbance, 201 Orchard St.  
22:58 Public Assist, 1214 Commercial St.

**NEW MEDIA** 'Bringing the community to your door' isn't just our slogan... It's our purpose

**THE LEAVENWORTH ECHO** **CASHMERE VALLEY RECORD**

For the latest local news and advertising see the NCW Media websites...

leavenworthecho.com  
cashmerevalleyrecord.com  
qgerald.com  
NCWBusiness.com  
lakechelanmirror.com

**JOE BROWN**  
**J.C. BROWN LAW OFFICE**  
200 APLETS WAY, CASHMERE  
782-1111  
BUSINESS, REAL ESTATE,  
ESTATE PLANNING, AND PROBATE



# Community

## OBITUARY

### Steven Michael Johnson

Nov. 14, 1959-July 31, 2023

Steven was born in Butte, Montana on November 14, 1959. His parents were Howard and Sally (Sandnas) Johnson, both are deceased. He is survived by sister, Carol Forhan, of Leavenworth, WA. and brother Duane and sister-in-law, (Carol) Johnson of Choteau, MT. He was an uncle to David Forhan of Olympia, WA., Michael Forhan, Bremerton, WA; and 5 nieces and 2 nephews and numerous cousins. Steve moved to

Washington from Arizona where he went to school and graduated. He worked for McMillian Firearms in Arizona making and testing firearms for the Olympics, and he owned his own gun store in Phoenix, Arizona. If desired to donate, please support Catholic Charities 145 S. Worthen St. Wenatchee, WA. 98801 or donate to Upper Valley MEND, 219-14th St. Leavenworth A memorial service will be at St. James Episcopal Church in Cashmere, WA. with date to be determined.

## OBITUARY

### James Theodore Witt

Jan. 25, 1979-July 26, 2023

James Theodore Witt came into this world on a blustery cold day January 25, 1979, in Thief River Falls, Minnesota. A big hug and smile awaited all that greeted him. James had a laugh and smile that would light up the room. That light ended July 26, 2023.

The Witt family moved back to Washington state in 1980, where they settled in Leavenworth. The beauty and ideal four seasons were among the reasons this area was selected. In the summer of 1981, the KOA was purchased. This is where James grew up. As a child he would knock on campers' doors, introduce himself by his full name and ask if they had cookies, or anything to draw with. Growing up he was a constant companion to his mother. No matter where they ventured to, he would strike up a conversation with anyone they came across. He enjoyed playing pool, ping pong, video games, riding his bike, swimming, and meeting new people every day as new campers came and went, forming many lifelong relationships. Work was also an important part of growing up at the campground, but you might as well have fun while doing it. The whole family worked together and formed deep bonds sharing those experiences. Pine needle fest, as we termed it, was the kickoff to the season. The best part was picking up the piles with dad on the tractor. He would raise the loader

high while we held onto the bucket and dumped it on the huge pile of pine needles, we would fall in and must crawl out. James learned how to do many different jobs at the campground which gave him a broad base of knowledge.

In 1997 he graduated from Cascade High School as a Kodiak, forming lifelong friendships here as well. He took a gap year while attending a few classes at Wenatchee Valley College, he spent time with family enjoying the beauty of our area and figuring out what he wanted to pursue in his career. The next year he attended Lake Washington Institute of Technology in Kirkland, completing his 2-year degree there while working for Compaq which was later purchased by HP. He truly enjoyed working with both the hardware and the software. Building racks of computers, designing their layout, routing all the wires in a perfectly organized pattern, then installing the software and troubleshooting issues was deeply satisfying for him. He later worked for Microsoft and other contracting companies, and as technology evolved, he grew into those new careers.

James enjoyed music, art, nature, biking, hiking, and traveling. He loved to maintain and upgrade any electronic device or automobile he had in his possession. He most recently had been updating his Smart car and Mustang over the last year, an eclectic leaning, but family was most important to James. Enjoying

all the summer activities of the area, swimming in the river and boating in Lake Chelan. He also enjoyed the fall when he could watch his Seahawks play and hang with his family. He was always playing fantasy football with family and friends. He also enjoyed wintertime with snowboarding and snowmobiling being the most often enjoyed. Several trips to Hawaii as well as across the US were partaken during his formative years as well as adult years with his family. As everything seems to tie back to the campground where he met and married Samantha Witt (Ellis), when their 15-year marriage ended, it produced two lovely children. Naomi Grace and Mason James. James took great joy in raising his children, he marveled at their ideas, amazing stories, and ever-changing growing minds. The deep love that he felt for them will carry them for a lifetime.

In mid-2020 James met Jennifer Kruse; the whirlwind romance would see them engaged by Christmas 2021. His true love Jennifer, her son Marquise, Naomi, and Mason embarked on many adventures from a cruise to Alaska, to a vacation to Hawaii with family, the 5 had numerous laughs and jokes along the way.

James is survived by his mother Caroline Witt (Chuck Gibbs), Naomi Witt (Daughter), Mason Witt (Son), Jennifer Kruse (Fiancé), Marquise Rainey (Fiancé's son). Siblings



are Alycia Williams (Rich), Carolyn Witt, David Witt (Lucinda). Several nephews, Christopher & Matthew (Alycia), Jadon (Carolyn), Gene, Liam, Owen (David). An aunt (Linda Watson) and many cousins from across the US. Numerous dear friends and his fur babies Houston and Zoey. James was preceded in death by Gene Theodore Witt (father), Wyatt Leroy Witt (nephew), Grandparents, Uncles, and Aunts. Please tell the ones you love how much you love them every day. James was a man of love for everyone. He and his father are now shining their love and light on all. Service will be August 18, 2023, at 4 p.m. at Grace Lutheran Church at 1408 Washington Street Wenatchee, Washington. Please send all donations to his children Naomi and Mason Witt care of Samantha Witt at BECU.

*My dearest Jameson, thank you for showing me the meaning of true love and loving me for who I am. I cannot imagine this life without you. Yours forever with me in my heart. Love Always, Your Sugar*

## DEATH NOTICE

### Sharedythe Thelma Riise

Born December 4, 1940 - Passed away on July 22, 2023

held 1:00 p.m. on September 8, 2023 at Sleeping Lady Mountain Retreat, Chapel Theater

Memorial Services will be

Standing water in tarps, tires and buckets breeds mosquitoes!

Please Drain Them!



"Stopping mosquitoes at their source"

- Do you live within two miles of Leavenworth?
- Call us if you see two or more mosquitoes!

Leavenworth Mosquito Control (509)548-5904

www.LeavenworthMosquitoControl.org



'Bringing the community to your door' isn't just our slogan... It's our purpose



## Obituary & Memorial Policies

NCW Media, Inc.: Leavenworth Echo, Cashmere Valley Record, Lake Chelan Mirror, Quad City Herald. An Obituary is a way for family member(s) to commemorate a loved one's life and to notify the community of the passing of the loved one. Obituaries are also used for historical and ancestral data. Memorials are another way to let the community know about the life and memories of the person who has passed. A Memorial is different from an Obituary. An Obituary is usually current, while a Memorial can be written later. Obituaries and Memorials need to be typed and emailed as a Word Document. They can be placed in one or more papers - all publish weekly on Wednesday. Obituaries are priced by the number of words and include one color photo and go online at no extra charge. Memorials are priced per column inch. Please call for cost. \*Payment is due at the time of placement. \*Exception: Chapels, funeral homes who have an account, can be billed. There is no charge for a Death Notice - information is limited. Deadline is 4 p.m. on Friday - some exceptions may apply. Please call 509-548-5286 for more information Or email classifieds@leavenworthecho.com

# UPPER VALLEY CHURCH GUIDE

New to our area? On vacation? These churches welcome you!

TO PLACE INFORMATION IN THE CHURCH GUIDE CALL 509-548-5286

### CASHMERE

**CASHMERE BAPTIST CHURCH**  
103 Aplets Way • 509-782-2869  
Sunday School, all ages, 9 a.m. Worship 10 a.m.  
Bible Study, Wed., 6:30 p.m.  
Pastor Bob Bauer  
Find us on Facebook at Cashmere Baptist Church



**CASHMERE PRESBYTERIAN CHURCH**  
303 Maple Street • 509-782-2431  
Sunday Morning Worship 10:30 a.m.  
Call for activities: Pastor Charles Clarke  
www.cashmerepres.org



**CASHMERE COMMUNITY CHURCH**  
213 S. Division • 509-782-3811  
In-person Service, Sunday, 11 a.m. until further notice.  
Pastor Lilia Felicitas-Malana  
cashmerecommunitychurch@gmail.com



Sunday Worship Service at 10 am  
Lead Pastor Steve Haney  
5800 Kimber Rd., Cashmere  
509-295-8006  
christcentercashmere.com



**GRACE LUTHERAN CHURCH**  
• 509-860-0736 401 Elberta Ave.,  
Morning Prayer or Holy Eucharist.  
Services, 10 a.m.  
Pastor Rob Gohl



**ST. JAMES EPISCOPAL CHURCH**  
• 509-860-0736 222 Cottage Ave.,  
Morning Prayer or Holy Eucharist.  
Services, 9:00 a.m.  
Pastor Rob Gohl

### DRYDEN

**DRYDEN COMMUNITY CHURCH**  
Hwy 2 at Dryden Ave. • 509-782-2935  
Sunday School 9:30 a.m.  
• Worship 10:45 a.m.  
Pastor Steve Bergland

**MID-VALLEY BAPTIST CHURCH**  
8345 Stine Hill Rd. • 509-782-2616  
Worship Service, 10 a.m.,  
Sunday School, 9 a.m.  
Pastor Mike Moore  
www.midvalley baptist.org

### LEAVENWORTH

**CASCADE MOUNTAIN BIBLE CHURCH**  
Office: 509-548-4331  
11025 Chumstick Hwy.  
Please join us Sunday mornings  
9 a.m., Sunday School  
10:30 a.m., Worship Service

**CORNERSTONE CHURCH**  
Leavenworth Grange Hall  
621 Front St.  
info@cornerstoneleavenworth.com  
Sunday Worship - 10 a.m.



**LEAVENWORTH COMMUNITY UNITED METHODIST CHURCH**  
418 Evans Street • 509-548-5619  
10 a.m. Sunday Service, Pastor Jo Dene Romeijn-Stout  
Leavenworthumc.org  
leavenworthumc@outlook.com  
cashmerecommunitychurch@gmail.com

**CHURCH OF JESUS CHRIST OF LATTER-DAY SAINTS**  
10170 Titus Rd. (across from middle school)  
Church: 509-548-7667  
Meetings: Sunday - 10 a.m.

**FAITH LUTHERAN CHURCH - ELCA**  
"Reconciling Works Congregation"  
224 Benton Street • 509-548-7010  
Worship 9:30 a.m. w/coffee following  
Eva Jensen, Pastor  
https://www.cleavenworth.com

**FIRST BAPTIST CHURCH OF LEAVENWORTH, SBC**  
429 Evans Street, 509-470-7745  
Sunday Worship: 11 a.m.  
Website: www.leavenworthbaptist.com  
Email: info@leavenworthbaptist.com

**LEAVENWORTH CHURCH OF THE NAZARENE**  
111 Ski Hill Drive • 509-548-5292  
Sunday Worship 9 a.m.  
Lead Pastor: Greg Appleby  
Youth Pastor Paige Derossett  
Worship Pastor-Jacob Mitchell  
www.LCN.org

**SEVENTH DAY ADVENTIST CHURCH**  
10600 Ski Hill Drive • 509-548-4345  
Saturday Services • Bible Study 9:30 a.m.  
Worship 11 a.m. • Fred Smith • 509-860-3997



**SPIRIT LIFE CENTER**  
210 Benton Street • 509-548-7138  
Sunday Worship 10 a.m., Prayer 6 p.m.  
Wednesday Bible Study 6:30 p.m.  
Pastor Russell Esparza

### MONITOR



**MONITOR UNITED METHODIST CHURCH**  
3799 Fairview Canyon • 509-782-2601  
In-person service, Sunday, 9 a.m.  
Pastor Lilia Felicitas-Malana

### PESHASTIN

**LIGHT IN THE VALLEY COMMUNITY CHURCH PLAIN COMMUNITY CHURCH**  
8455 Main Street  
Sunday Worship 10 a.m. • Pastor John Romine  
www.lightinthevalley.org



**NEW LIFE FOURSQUARE CHURCH**  
7591 Hwy. 97 • 509-548-4222  
Sunday Worship, 10 a.m.  
Pastors, Darryl and Mindy Wall  
Email: newlifeleavenworth@gmail.com  
FB page: newlifeleavenworth  
www.newlifeleavenworth.com



**PLAIN COMMUNITY CHURCH**  
Serving Our Valley Since 1941  
12565 Chapel Dr. 509-763-3621  
Looking for you at 10:30 this Sunday!  
plaincommunitychurch.org  
facebook.com/plaincommunitychurch  
office@plaincommunitychurch.org





## Michelle's Kitchen Table Strategies

By Michelle Priddy

### Hen and Chicks

Grandma and I were preparing bacon, lettuce, and tomato sandwiches for dinner when Grandpa came in. He took his place at the table like he does most evenings after working during the day around the place. This day had been more stressful than usual because the well ran dry and he'd spent all day figuring out how to get it back online so we could water the lawns.

When he sat down, he said to me, "you know that bread you gave me?"

"That bread?" I asked, looking up from slicing tomatoes. He nodded. My mind went blank. For a moment I didn't remember giving him any bread. Then I remembered; when I was looking for sandwich bread, I found a few slices of old stale bread in a bag, so I put the bag in the seat of the Gator, his John Deere utility vehicle, it's kind of like a golf cart, to take down to Kat's chickens.

"Oh, the slices of bread for the chickens?"

We're feeding lots of chickens right now. There was a gal who bought hatching eggs from Kat about a month ago. She told Kat if she'd hatch out a couple dozen chicks, she'd buy them from her. Kat let her marvelous broody hens set on twenty-eight fertile eggs. Most of the eggs hatched but the gal who wanted them is nowhere to be found. So now we have chicks for sale, and it seems like there's hens and chicks everywhere.

He nodded, "I was on the snowball lawn, checking on the water and there was a bunch of chicks and a hen."

"They like it there, in the shade by my snowball bush," Grandma smiled as she finished laying bacon on the serving plate.

"Yeah, they sure do," he said, "the other chickens weren't around so I tore up that bread in little pieces for the chicks. There were a few little pieces for each chick." I've watched Grandpa stop his Gator between the main flock and hens with chicks so

he could covertly toss grain, bread and kitchen scraps to the hens so their babies could eat before the scrappy roosters and the rest of the flock gobbled up all the food. In my mind I could see the hen on the snowball lawn and hear her clucking 'come-and-get-it' to the eight to ten chicks in her care. Grandpa continued "After calling the chicks, the hen would pick up each little piece in her beak."

"The hen?" Grandma's tone told me she didn't approve.

Grandpa nodded, "yes, the hen. She'd cluck, call the chicks, then peck up a little piece of bread and those chicks would grab it right out of their mother's mouth and run off with it."

"Oh," Grandma said, "That's okay." Her calm tone told me that was right behavior for a good hen, calling chicks to food then letting them steal it out of her mouth. "And then I'll bet all the chicks ran around chasing each other trying to steal bits of bread from each other."

"Yep," Grandpa said with a grin and a nod. In my mind I

could see eight to ten chicks in a wild game of tag as they tried to steal tiny morsels of food from each other.

Grandma took a deep breath and gave a sigh, "I thought so."

### Grandma's Bacon, Lettuce and Tomato Sandwiches

For each person:

- 2-3 slices of good bacon cut in half and fried until crispy
- 2-4 thin slices of tomato
- 2 slices bread, toasted
- 1 large leaf of lettuce, washed
- Skiff of mayonnaise or butter (optional)

Toast the bread. A skiff of mayonnaise or butter can be used, but with the bacon grease they really aren't necessary. Lay the slices of bacon and tomato on the toast. Top with lettuce leaf then put a second slice of bread on the sandwich. Cut in half and serve with soup for a tasty lunch or a light dinner.

Choices: Add a slice of sweet onion to the sandwich and/or a few slices of avocado. Almost any raw sandwich veggie goes

good with bacon, shredded carrot, a pinch of sprouts; bit of cabbage. It's all good.

**About the author:** In 2000 Michele Priddy left the work force to become a stay-at-home mother and wife. Being a one-income family in today's society meant she had to learn to budget quickly. Food became a priority early because she wanted the children to have the best nutrition she could offer them even on a budget. She taught cooking classes at various churches in her community on "How to stretch the food dollar with simple ingredients". Michelle has put her kitchen strategies, stories and recipes in booklets, her church newsletter and in her hometown newspaper, *The Goldendale Sentinel*. We hope you will enjoy her strategies, stories, and recipes. You can contact the *Leavenworth Echo* at Reporter@leavenworthecho.com or Michelle's email: mykitchenstrategies@gmail.com if you have any questions or comments.

## County unemployment numbers released

Submitted by WA State ESD

**OLYMPIA** - The BLS estimates Washington's preliminary seasonally adjusted unemployment rate for June 2023 is 3.8 percent. The revised estimated May 2023 unemployment rate is 4.1 percent. According to BLS estimates, the number of unemployed people fell by 10,500 in June 2023 compared to May 2023. At the same time, the number of employed people rose by an estimated 13,400. Overall, this amounted to an increase of 2,900 people in the labor force. The preliminary June 2023 unemployment rate is 0.1 percentage points lower than the June 2022 rate of 3.9 percent. June 2023 preliminary unemployment rates: U.S. (preliminary) 3.6%, Washington (preliminary) 3.8%, Chelan County (preliminary) 2.8%, Douglas County 3.1%, Okanogan County 3.5%.

Based on BLS estimates, Washington state nonfarm employment increased by 11,900 jobs from May 2023 to June 2023.

**One-month employment change by industry**  
Based on a BLS survey of

businesses and governments, Washington gained an estimated 11,900 jobs during the month, on a seasonally adjusted basis.

Overall, employment increased in seven major industries and decreased in six in June.

- Private sector employment is estimated to have increased by 8,800 and government employment increased by 3,100.
- Leisure and hospitality employment increased by 8,900 overall, with 5,200 jobs added in food services and drinking places.
- The number of jobs in education and health services increased by 4,600 overall, with 3,100 jobs gained in social assistance.
- Professional and business services employment increased by 500 overall, with 800 jobs gained in professional, scientific, and technical services.
- Manufacturing employment fell by 2,500, led by 1,700 jobs lost in food manufacturing.
- Retail trade employment decreased by 2,800 overall, with 900 jobs lost by food and beverage stores.

## WA State Patrol announces new Hit-and-Run Alert

SUBMITTED BY CHRIS LOFTIS

WSP

Olympia - The Washington State Patrol (WSP) announced that the state's new Hit-and-Run Alert system began operations Aug. 1. Authorized by the state Legislature earlier this year, the Hit-and-Run Alert system is a program of cooperation among state, local, and tribal law enforcement agencies, along with the Washington State Department of Transportation (WSDOT) to enhance the ability to identify and recover a fleeing vehicle involved in a serious injury or fatality hit-and-run collision.

"Last year, our state saw over 300 hit-and-run collisions resulting in serious injury or death. In many of those situations, information about the fleeing vehicle was available that, if widely disseminated, might have helped us find a dangerous driver," said WSP Chief John R. Batiste. We are working with our partners in law enforcement across the state and in highway safety at WSDOT to get the word out about these often devastating crimes.

For a Hit-and-Run Alert to be activated, the following criterion would need to be met:

- A hit-and-run collision resulting in serious injury or death.
- Enough descriptive information is available

to assist in locating the suspect vehicle (i.e. a full or partial license plate, a description of the vehicle and any possible damage, location and direction of travel, etc.)

- The incident has been reported and is being investigated by a law enforcement agency.

Alerts will be sent out to the media as well as to those who sign up to receive them electronically. Local law enforcement public information officers will also post them on social media. If there is enough identifying information regarding the fleeing vehicle to be helpful for the traveling public, WSDOT will use their electronic highway Variable Message Signs and Highway Advisory Radio systems in specific locales to aid in identifying a dangerous vehicle.

"If you see or hear the alert and then see what you think might be the suspect vehicle, call 911 and report your location," said Chief Batiste. "DO NOT ENGAGE with the vehicle or driver under any circumstances. Let our troopers and our fine local law enforcement officers do their jobs in safely and professionally contacting suspect vehicles," the Chief emphasized. "Let's all do our part to keep the roadways and one another safer."

## Dear Friends and Neighbors,



COMMUNITY VOICES

Rep. Keith Goehner

The summer season seems to be going fast. I hope you have had the opportunity to enjoy some vacation time and be with loved ones. There are a number of things happening related to state government issues and I want to provide you with an update. I also want to thank everyone who is contacting me with questions, comments, and concerns. I appreciate hearing from those I represent.

### Concerning crime report

Last month, the Washington Association of Sheriffs and Police Chiefs released its Annual Crime in Washington Report. The report indicated Washington state experienced its highest murder rate since the 1980s. The crime report is evidence that our public safety policies need work and staffing levels are too low. Washington has the lowest number of police officers per capita in the country. If Washington had the national average of officers-to-population, we would have more than 7,000 officers commissioned than we do right now.

I expect public safety issues to be a high priority once again when we convene for the 2024 legislative session.

To check out some of the solutions we offered during the legislative session to improve public safety and make our communities safer, go to our priorities page and click on the "making communities safer" section.

### Long-term care payroll tax takes effect

Your paycheck may have been a little smaller in July and moving forward. The WA Cares Fund, the new state-run, long-term care insurance program, kicked in on July 1, and started payroll deductions

for many Washington workers, including part-time and temporary workers. Those in the program will pay up to 58 cents on every \$100 of their earnings. That means someone making \$50,000 per year will pay \$290 a year.

The payroll tax comes from partisan legislation, House Bill 1087, passed in the 2019 legislative session.

People were given an opportunity to opt out if they could find their own long-term care insurance plan before Nov. 1, 2021, but insurance companies were flooded with requests and couldn't cater to many who had still hoped to opt out of the mandatory plan.

Instead, many are now stuck with this plan which is inadequate and poorly designed. The limited lifetime benefit of up to \$36,500 will hardly cover health needs for the long term. There is also no guarantee you will get the benefits of the program. The plan is not portable, meaning if you leave the state at any time, you lose your benefits. If you do not need the benefit, you forfeit all the money invested from your paycheck, and your spouse is not eligible for your benefit contributions if you do not use them.

The unpopularity of the program is reflected in Advisory Vote No. 20 from the general election in November 2019 when nearly 63% of voters said the tax should be repealed.

I have opposed this flawed state program from the beginning. There was legislation introduced. With the long-term care payroll tax now in place, there are plans in the upcoming session to introduce legislation that would make the program optional. Folks should have the option to determine their own needs and long-term care. I could support legislation that makes this program optional and provides more flexibility to those who want to invest in and may need long-term care.

### Strengthening ties with South Korea

As part of our duties, many legislators serve on committees or boards outside of the Legislature's policy committees. I am a member

of the Legislative Committee on Economic Development and International Relations (LCEDIR), which studies and reviews economic development issues. The committee's duties include an emphasis on international trade, tourism, investment, and industrial development, and assisting the Legislature in developing a comprehensive and consistent economic development policy.

Earlier this summer, I led a delegation of legislators to South Korea to strengthen international relations and get a firsthand look at economic development occurring in the country. Washington state is home for about 60,000 Koreans. It was a great experience, and our hosts were very gracious.

We toured a carbon fiber facility that supplies Boeing with wing parts. They would like to expand the use of carbon products produced by the facility in our region. There is also a facility that produces hydrogen tanks.

South Korea expressed great interest in working with us on economic issues, including having Washington state grow crops for them. This would be a big boost for our agricultural industry.

Their country is also working on biopharmaceuticals, or medical grade supplements.

I enjoy being part of this committee, as it gives us an opportunity to promote our state's competitive advantages and industries. Collaborating with South Korea and other countries on these types of industries can only benefit us in the future.

### Second highest fuel prices in the country

For almost six weeks, Washington had the highest fuel prices in the nation. This week, California edged back ahead of us. As of Wednesday, Washingtonians are paying \$4.97 for a gallon of gas, with California slightly ahead of us at \$5.02. We are paying \$1.17 more than the national average of \$3.80.

There are many factors that impact gas prices. We have one of the highest gas taxes in the country, but that goes toward infrastructure and maintenance and operation. One of the main

reasons our fuel is so expensive is the Climate Commitment Act (CCA), or the cap-and-trade program passed by the majority party in 2021. According to a report by Affordable Fuel Washington, the CCA is adding \$.44 per gallon for gas and \$.55 for diesel. There is no quantifiable transportation benefit, as the dollars generated by the CCA are not dedicated to any infrastructure.

Fuel prices are affecting those who can least afford it - the working middle class, people on a fixed income, those who travel a long distance for work, and farmers, who were supposed to be exempt from the new carbon law.

There are legislators working on solutions to address some of the government intervention and environmental regulations impacting our fuel prices including senators Chris Gildon, R-Puyallup, and Mark Mullet, D-Issaquah.

I have signed on to a letter submitted to the Department of Ecology by Sen. Gildon and 42 other legislators, proposing changes to the cap-and-trade program.

I continue to hear from many across the district on transportation. I can assure you I am having continued conversations with the Department of Transportation and am committed to addressing the challenges and meeting the needs of the 12th District on both the west side and east side of the mountains.

### Following the Legislature and state government

Please continue to contact me with any questions, concerns, or comments regarding state government issues. I appreciate your input as it helps me better represent you in the Legislature.

I urge you to utilize these websites.

- The Ledger - a legislative news aggregator
- Capitol Buzz - Daily news clips
- How you can be involved in the legislative process

*It is an honor to serve the 12th District in the state House of Representatives. Sincerely,*  
Keith Goehner



Leavenworth Rotarians are getting ready to paint the wall on Hwy. 2. The paint and equipment were donated by the City.

**In photo are:** From Left front are Karen Haire, Bill Dick, Kiffen Fishburne, Rotary President, Mahala Murphey-Martin and John Dawson, back row are Steve Helmick, Brad Brown, and Carla Nolton. **Not in photo are** John Fishburne, and Kurt and David Haire. **Service above self.**



"A true community is a diverse community which can house its workforce. We're more than a resort. This is our home, and we want it to stay diverse and strong for future generations."

## CARL FLOREA FOR MAYOR

A Mayor for the Whole Community

### Thank You Voters!!

It is both humbling and gratifying to have the support you've shown! I need you all to help me as I continue to reach out to more residents with the message of what we have done, and what our hopes are for our city.

**ON TO NOVEMBER 7<sup>th</sup>**



Paid for by the Committee to Elect Carl Florea  
Denise Darling, Treasurer



**NCW MARKET.COM**  
CLASSIFIED ADS

**BUSINESS JOURNAL**

**ECHO RECORD MIRROR HERALD**

Place your ad online at [NCWMARKET.COM](http://NCWMARKET.COM) or call 509-548-5286 - Leavenworth Echo/Cashmere Valley Record 509-682-2213 - Lake Chelan Mirror • 509-689-2507 - Quad City Herald

# CLASSIFIEDS

**PUBLISHER'S NOTICE**  
All real estate advertising in this newspaper is subject to the Fair Housing Act, which makes it illegal to advertise "any preference, limitation or discrimination based on race, color, religion, sex, handicap, familial status or national origin, or an intention to make any such preference, limitation or discrimination." This newspaper will not knowingly accept any advertising for real estate that is in violation of the law. To complain of discrimination call HUD at 1-800-669-9777. The number for hearing impaired is 1-800-927-9275.

**CORRECTIONS:** NCW Media Inc. shall be responsible for corrections to advertisements on the first publication only. The advertiser will be responsible for corrections made thereafter. NCW Media Inc. shall not be responsible for slight changes or typographical errors that do not lessen the value of the advertisement. NCW Media Inc.'s liability for other errors or omissions in connection with an advertisement is strictly limited to the publication of the advertisement in any subsequent issue. No monetary refunds will be given. For more information call (509) 548-5286.



**Administrative**

**Puzzle Solution**

6	2	5	9	4	8	7	3	1
3	9	7	2	1	6	8	4	5
1	8	4	7	3	5	2	6	9
4	3	9	5	8	7	6	1	2
8	5	2	1	6	3	4	9	7
7	6	1	4	9	2	5	8	3
2	1	8	6	5	9	3	7	4
5	4	3	8	7	1	9	2	6
9	7	6	3	2	4	1	5	8

L	O	G	I	N	A	N	C	O	W	L	S	
I	N	A	N	E	F	B	I	U	M	I	A	K
S	C	U	L	L	A	C	R	D	A	D	D	Y
E	R	A	S	E	R	R	O	D	N	E	Y	
W	O	K	R	I	C	E						
P	A	M	N	I	C	E	T	R	A	G	I	C
U	R	A	L	N	A	S	A	S	L	O	S	H
P	O	L	E	G	L	O	B	E	U	R	S	A
I	M	A	G	O	M	U	L	L	M	A	U	L
L	A	Y	O	F	F	N	E	E	D	L	E	K
F	O	L	D	E	R	R	I	D	E	L	L	
C	U	R	I	A	L	E	U	S	U	A	L	
G	R	A	V	I	T	A	D	C	O	N	T	E
I	S	L	E	E	G	O						

**Announcements**

**Lost & Found**

**LOST & FOUND ITEMS** can be placed in our **Local Newspapers and Online at NCWMARKET.COM** for **ONE week for FREE.** Limit 30 words. A small fee will be charged for over 30 words and pictures or other extras.

Leavenworth/Cashmere 509-548-5286 or email [classifieds@leavenworthecho.com](mailto:classifieds@leavenworthecho.com) or Lake Chelan Mirror 509-682-2213 or Quad City Herald 509-689-2507 or email [mirrorads@lakechelanmirror.com](mailto:mirrorads@lakechelanmirror.com)

**Deadline Noon on Friday for the next week's papers**

**Happy Ads**

Do you have a **SPECIAL EVENT COMING UP? HAPPY BIRTHDAY CONGRATULATIONS! WILL YOU MARRY ME? HAPPY ANNIVERSARY**

Add unlimited text and pictures, video for your online ad at [www.NCWMarket.com](http://www.NCWMarket.com)

Print ads are limited to 30 words, over 30 words, or extra enhancements like bold words or border will be a minimal extra charge. Ads will be placed in the following Wednesday edition of the papers. It is easy just Register and pay on our secure site 24/7 Or call 509-682-2213 to place ad or have questions.

**The Lake Chelan or Quad City Herald** or email [mirrorads@lakechelanmirror.com](mailto:mirrorads@lakechelanmirror.com) For **The Leavenworth Echo or Cashmere Valley Record** Call 509-548-5286 or email [classifieds@leavenworthecho.com](mailto:classifieds@leavenworthecho.com)

**Commercial**

**Commercial Rentals**

**Flying Dutchman Self Storage**  
Secure storage units for rent.  
**5x10 up to 10x25**  
All units have lights with 24/7 access.  
Give us a call (509)548-6343.

**Employment**

**Help Wanted**

**Looking for a great local employee?**  
It is easy to place your ad online 24/7 at [www.NCWMarket.com](http://www.NCWMarket.com) Register and pay on our secure site.

**Want Print Only** for The Lake Chelan Mirror Quad City Herald Brewster Call 509-682-2213 or email [mirrorads@lakechelanmirror.com](mailto:mirrorads@lakechelanmirror.com) OR Leavenworth Echo Cashmere Record 509-548-5286 or send email to [classifieds@leavenworthecho.com](mailto:classifieds@leavenworthecho.com)

Deadline is Friday by Noon for the following Wednesday issues of all newspapers



**Help Wanted**

**Special Ed Paraeducators Mansfield**  
Hiring two paras to serve the Mansfield School District. 34.15 hrs/wk, school year schedule. \$18.96-23.57 hourly. Benefits and Retirement. Apply online: [www.esd112.org/takeroot](http://www.esd112.org/takeroot)



School District is seeking qualified applicants for the following positions:

Substitutes needed:

- Bus Drivers
- Custodians
- Food Service
- Para Professionals
- Teachers
- Teachers (Emergency Substitute)

Fast Track application process and information can be found on our website at [www.cascadesed.org](http://www.cascadesed.org) EOE

**Receptionist for HVAC Contractor.**

Full-time M-F. Equal opportunity employer, Fun loving, family oriented and energetic work environment. Full benefits with paid holidays, vacation and paid health care package. Responsibilities include multiline phone system, operation of general office equipment and electronic record keeping. Must be customer oriented and have ability to multitask. Knowledge of Microsoft Office and QuickBooks. Located in Entiat. If interested call for an application 509-784-4822

**"Mansfield School District is seeking a School Nurse for the 2023-24 school year.**

To view job description and print off a job application, access our website at [www.mansfield.wednet.edu](http://www.mansfield.wednet.edu). We are an equal opportunity employer. If you have any questions, please contact us at 509-683-1012."



**Windermere Real Estate/NCW Leavenworth/Lake Wenatchee Specialists**

**Looking for real estate in the Upper Valley? Give us a call today!**

Robyn Bodajla - 617-462-3402  
Momi Palmieri - 509-433-2211  
Geordie Romer - 509-679-8958  
Allyson Romer - 509-630-9898

See all available properties at [windermereleavenworth.com](http://windermereleavenworth.com)

**Help Wanted**

**Clerk of the Board/Facilities Coordinator - Full-time**

**Organization:** Okanogan County Transit Authority (TranGO)  
TranGO is looking for a full-time Clerk of the Board/Facilities Coordinator. This position is hourly non-exempt. Compensation is \$28.12 - \$30.42 per hour (DOE). Benefits include health, dental, vision, life insurance, retirement, (see website for benefit details) sick leave and vacation. Responsible in part for clerical duties for the OCTA and OCOG Boards, processing accounts payable, replying to Public Records Requests, notary, compiling and editing various documents, advertising for meetings and public hearings, serving as back up on phones, receiving and distributing mail, organizing, and maintaining all OCTA and OCOG files and responsible for records retention. (See job description for complete details). Visit [www.okanogantransit.com](http://www.okanogantransit.com) for application and job description. A complete application including a resume and cover letter must be submitted in order to be considered for the position. E-mail your completed application to [financehr@okanogantransit.com](mailto:financehr@okanogantransit.com) or mail to TranGO, PO Box 507, Okanogan WA 98840. **Application Deadline:** First review of the applications will be 08/18/23; position open until filled. Okanogan County Transit Authority is an Equal Opportunity Employer.

**For Sale**

**Antiques & Collectibles**

**Get cold hard CASH for your Antiques and Collectibles by placing them in our classifieds.** Place your ad with pictures online 24/7 at [www.NCWMarket.com](http://www.NCWMarket.com) Register and pay on our secure site. **Want Print Only?** Call **Lake Chelan Mirror Quad City Herald** 509-682-2213 or email [mirrorads@lakechelanmirror.com](mailto:mirrorads@lakechelanmirror.com) or call **The Leavenworth Echo Cashmere Valley Record** 509-548-5286 [classifieds@leavenworthecho.com](mailto:classifieds@leavenworthecho.com) **Deadline: Noon on Friday for all papers.**

**Garage & Yard Sale**

CLEAR SOME SPACE WITH A **Garage Sale**

Fill your pockets with CASH \$\$ Let others know what items you are selling!

Go online now to Place your ad 24/7 at [www.NCWMarket.com](http://www.NCWMarket.com)

Print only? **Deadline Friday at Noon for all papers**

Lake Chelan Mirror Quad City Herald Call: 509-682-2213

Leavenworth Cashmere Call: 509-548-5286

Your ad will appear online and in the newspapers for one low price!

**General Merchandise**

**Items for Sale**

- AMEREX carbon dioxide commercial fire extinguisher \$50
  - Small hand-truck \$25
  - Rival brand small microwave, \$25.
  - Toaster-Broiler oven \$20.
  - 4 metal-framed chairs with burgundy cloth seats \$40
  - Nice wooden, 2 drawer legal file with folders \$40
  - Several desk cloth chairs \$20 each.
  - A Laverne & Shirley 1960's Gray metal kitchen table \$50
  - Tiffany style lamp-table \$50
  - 24 x 24 inch canvas pink rose picture \$20
- Call 509-670-1723 to see

**Legals**

**Public Notices**

Pursuant to RCW 35.21.157 and the contract between WM and the City of Cashmere, WM hereby provides notice to the public of rate changes for solid waste and recycling collection pursuant to the Solid Waste Collection Service agreement between WM and the City of Cashmere. The Rate Adjustment will be effective October 1, 2023. More information concerning the 2023 Rate Adjustment can be obtained by calling WM at (877) 466-4668 or [www.wmnorthwest.com/cashmere/index.html](http://www.wmnorthwest.com/cashmere/index.html). Published in The Cashmere Valley Record/Leavenworth Echo on August 2, and 9, 2023. #6065

**Public Notices**

**Chumstick Wildfire Stewardship Coalition meeting notice**

August 16, 2023, 6:00 pm  
Leavenworth Fire Station  
Bio char program and business meeting.

Published in The Leavenworth Echo/Cashmere Valley Record on August 9, 2023

[www.leavenworthecho.com](http://www.leavenworthecho.com)

[www.cashmerevalleyrecord.com](http://www.cashmerevalleyrecord.com)

**RUN IT 'TILL IT SELLS**  
Housing sales are **HOT!**  
Is your home getting the attention it needs!

Advertise your property on **NCWMarket.com** for one low fee!  
**\$100 fee includes:**

- Up to 5 photos of your home & property
- Video • Unlimited description
- Google Map to your location (you can opt out)
- **Privacy Link** (interested buyers contact you through the site protecting your identity)

Our site is promoted across North Central Washington giving you exposure to your primary potential local buyers. Your listing will continue to run for 12 months or until you cancel it



Public Notices

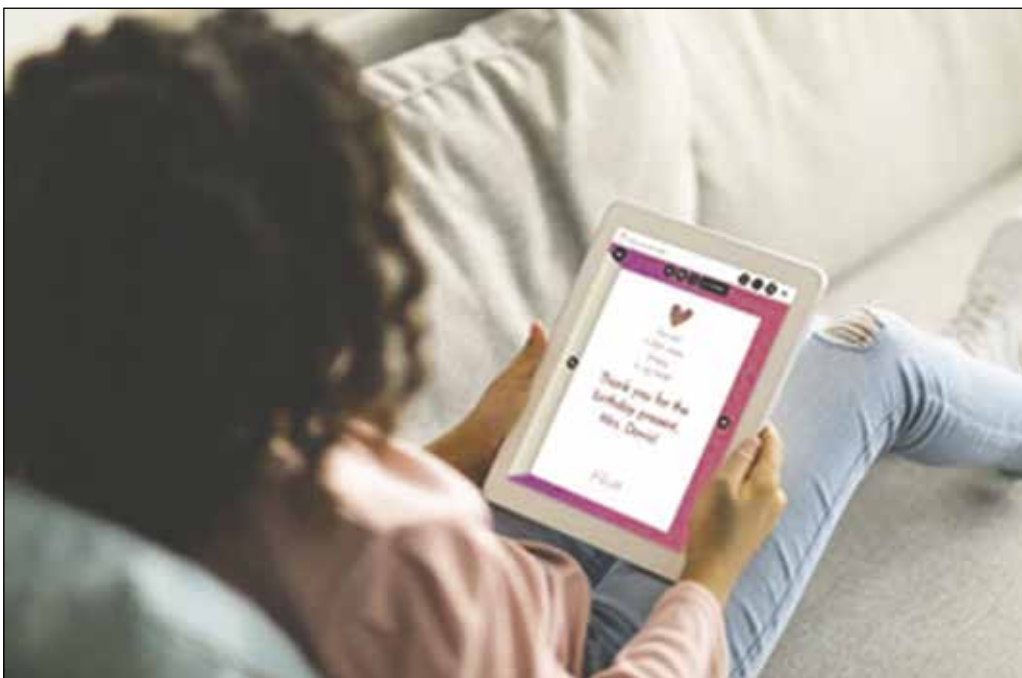
IN THE SUPERIOR COURT OF THE STATE OF WASHINGTON IN AND FOR THE COUNTY OF GRANT

No. 22-2-00062-13  
SECOND SUMMONS BY PUBLICATION  
FARRAH WARDENAAR (f/k/a FARRAH BROWN), a married woman, Plaintiff, vs.  
JOHN R. WERST and VIRGINIA WERST, husband and wife; the UNKNOWN HEIRS of JOHN R. WERST; the UNKNOWN HEIRS of VIRGINIA WERST; ALBERT DIEDE and BERNICE DIEDE, husband and wife; the UNKNOWN HEIRS of ALBERT DIEDE; the UNKNOWN HEIRS of BERNICE DIEDE; HENRIETTA GRIFFITH, a single woman; KERRY JOHN GRIFFITH and JANE DOE GRIFFITH, husband and wife; LAURIE ANN GRIFFITH, as her separate property; and ALL UNKNOWN PERSONS CLAIMING AN INTEREST IN THE PROPERTY, Defendants.

THE STATE OF WASHINGTON TO THE SAID DEFENDANTS: UNKNOWN HEIRS of JOHN R. WERST and VIRGINIA WERST, the UNKNOWN HEIRS OF ALBERT DIEDE AND BERNICE DIEDE, and ALL UNKNOWN PERSONS CLAIMING AN INTEREST IN THE PROPERTY  
You are hereby summoned to appear within sixty (60) days after the date of the first publication of this summons, to wit, within sixty (60) days after the 5th day of July, 2023, and defend the above-entitled action in the above-entitled court, and answer the complaint of the Plaintiff, FARRAH WARDENAAR (f/k/a FARRAH BROWN), a married woman, and serve a copy of your answer upon the undersigned attorneys for Plaintiff, FARRAH WARDENAAR (f/k/a FARRAH BROWN), a married woman, at their office below stated; and in case of your failure so to do, judgment will be rendered against you according to the demand of the complaint, which has been filed with the clerk of said court. The object of Plaintiff's action is to quiet title in and to Grant County Parcel No. 15-0956-000, which is more particularly described as follows:

Those portions of the Southwest quarter and the West half of the Southeast quarter of Section 4, Township 17 North, Range 24, E.W.M., Grant County, Washington, not included within the boundaries of Irrigation Block 79, Columbia Basin Project, Grant County, Washington, according to the plat thereof filed April 17, 1956.  
DATED this 29th day of June, 2023.  
STW LAW, PLLC  
By: Stephen W. Reagan,  
WSBA #41328  
Attorney for Plaintiff  
Published in The Leavenworth Echo/Cashmere Valley Record on July 5, 12, 19, and 26, and Aug. 2, and 9 2023. # 5959

# Teach kids kindness and gratitude with thank you notes



Courtesy StatePoint

Kids love devices, so put their screen time to good use with apps like American Greetings Creatacard for iPad.

STATEPOINT - Nearly 60% of Americans say they send thank you notes at least occasionally to show their appreciation for a gift or favor, according to a recent poll from AmericanGreetings.com. While writing thank you's might seem time consuming, it's actually a wonderful opportunity to teach children important life lessons such as kindness,

gratitude and empathy.

Whether they are thanking their new teacher, their favorite fall sports coach, or a friend or family member, here are a few tips and tricks for creating meaningful, yet simple, thank you notes with kids this back-to-school season and beyond.

**Focus on the positive**

It's important to give

children a "why." Parents should explain that when people receive a thank you note, it not only makes them feel good, but it lets them know that the gift arrived safely and was appreciated. By placing the emphasis on the person who gave them the gift, rather than on themselves, it changes thank you notes from a pain-point to a positive.

**Make it a fun with devices**

Kids love devices, so put their screen time to good use with apps like American Greetings Creatacard for iPad. The app offers a fun, easy and engaging tool to make and send greeting cards. Plus, receiving them will be just as exciting, as homemade cards from kids are enjoyed by 93% of Americans.

Whether making a card from scratch, coloring a card or customizing a pre-made design, the Creatacard app allows kids to explore their imaginations. Simply choose from a variety of virtual (and mess-free) tools, such as pencils, paint, markers, photo frames, stamps and stickers to add designs, images and personalized messages. Best of all, the app is free to download, and cards can be sent instantly via email, text, messaging apps or shared on social media.

**Power of personalization**

According to the American Greetings poll, personalized messages are the most important and enjoyed part of thank you notes. Parents should encourage kids to think about what made the

gift so special and be sure to communicate that message. Was it something they really needed or wanted? Will they use the check or money for a specific purpose? Spending a few extra minutes personalizing each note will go a long way to show their sincere appreciation.

**Timing is Everything – The Sooner the Better**

It's proper etiquette to be timely in sending thank you notes. In fact, 54% of Americans say they should be sent within one week of receiving a gift. Build good habits with kids by sending thank you notes as soon as possible. It may be helpful to plan ahead and establish a set time within a week of the celebration for children to create and send their cards. And luckily, if you're sending digital greetings, they'll arrive instantly, save money on postage, and save time by eliminating the need to find current street addresses.

Teaching kids the importance of properly showing gratitude is a life skill they can take with them as they grow older. Starting small with thank you notes can be an invaluable step to becoming a kinder and more gracious person.

## Drug information sheets – why you get them

**Q: I always get a sheet of printed information with every new prescription and refill. I usually throw them away without reading them because the print is too**

**small. Why do I get these?**

The Food and Drug Administration (FDA) wants you to be informed about important facts about your medicines so you can take

them safely. Each time a pharmacist dispenses a new or refilled prescription, he or she is REQUIRED to provide written information about every one of your medicines. They are also expected to ensure that you have received it, so you get these either folded inside the bag containing your pill bottles or stapled to the outside.

Written information is considered one of the most reliable ways to give you essential information about your medicines. Instead of only hearing it once from your doctor or pharmacist, which you may forget by the time you arrive home, with printed information, you can read it at your own pace. Written communication can also be stored where you take your medicines in case you have a future question about one of your medicines.

There are 3 types of printed consumer information given out with prescription medicines: consumer medication information sheets (CMI), Medication Guides (MedGuides), and Patient Package Inserts (PPIs).

Every time you get a new or refilled medicine, you are supposed to receive a consumer medication information sheet or CMI.



Each CMI is computer-generated and designed to travel home with you, either stapled to or placed inside the bag holding your prescription. Although the FDA has published guidelines about what types of information they feel should be included in a CMI, they don't directly regulate or control what form a CMI takes.

The FDA recommends specific elements that they prefer pharmacies to use in their CMI handouts. However, each pharmacy retains the choice of which of those elements they will use. For example, the CMI you receive for your blood pressure medicine at one pharmacy may look different from the CMI for the same drug from another drugstore. Some leaflets give only a few sentences of information, while others covering the same medicine can go on for several pages. One reason for this variation is how the printers used by each pharmacy limit the length and format of their CMI printouts. Whichever form they take, what most people consistently notice about their CMI is how small the print seems.

In a study published in 2010 by the University of Florida College of Pharmacy, professional shoppers filled prescriptions for two common medications in a sampling of 365 pharmacies nationwide. 94% of the pharmacies in the study dispensed a CMI with each drug. However, fewer than 50% of the CMIs provided were considered easy to read or understand.

A collaborative workgroup, including the FDA and other stakeholders, has been developing and promoting an easier-to-read format for medication information called a Patient Medication Information sheet (PMI). PMIs use bold print, bigger fonts, and much more white space.

Here are the 4 types of written information for consumers about medications:

**1. Consumer Medication Information sheets (CMIs)**

CMIs are required by the FDA to be given out with every new prescription and refill. According to FDA guidelines, a CMI should include 8 criteria: the drug name and what it's used for; any contraindications and what to do about them; specific directions about how to use it, how to monitor your progress and get the most benefit; any special precautions and how to avoid harm while using it; symptoms of severe or frequent side effects and what to do if they happen; and encouragement to ask questions. The information must be up to date and scientifically accurate, easily understandable and legible, and have print large enough to read easily by most people.

**2. Patient Medication Information sheets (PMIs)**

PMIs are CMIs that are easier to read. They have larger fonts and more white space. PMIs usually include separate boxes or bubbles for crucial topics such as "Uses," "Important Safety Information," "How to Take," "Get emergency help if you have," and "Possible side effects."

**3. Medication Guides (MedGuides)**

MedGuides are specialized information sheets describing how to reduce the risk of taking certain medicines known to have serious adverse reactions. MedGuides explain what side effects to watch out for. Non-steroidal anti-inflammatory drugs, blood thinners, and antidepressants are examples of drugs with MedGuides.

**4. Patient Package Inserts (PPIs)**

PMIs are similar to MedGuides but from the manufacturer. PPIs are required for products containing estrogens, like birth control pills, patches, and vaginal creams.

*Dr. Louise Achey, Doctor of Pharmacy, is a 43-year veteran of pharmacology and author of Why Dogs Can't Eat Chocolate: How Medicines Work and How YOU Can Take Them Safely. Get clear answers to your medication questions at her website and blog, TheMedicationInsider.com. ©2023 Louise Achey*

### SUDOKU PUZZLE

GRAND ALASKAN CRUISE & TOUR  
12 days, departs May - Sep 2022  
FROM \$1,949 \$1,699  
VACATIONS promo code N7017  
1-855-208-9533

		5	9		8			1
3	9							
	8				5			9
4	3					6	1	
	6	1					8	3
2			6				7	
							2	6
9			3		4	1		

Fill in the blank squares in the grid, making sure that every row, column and 3-by-3 box includes all digits 1 through 9.

Looking for a home for your Furry friend?  
Try the pet section on NCWMarket.com

### CROSSWORD PUZZLE

THEME: BACK TO SCHOOL

ACROSS  
1. \*Beginning of a computer class?  
6. Mandela's org.  
13. Silly and insignificant  
14. U.S. counterpart to British M15  
15. Inuit skin boat  
16. Long oar  
17. Acronym, abbr.  
18. Movie "\_\_\_ Day Care"  
19. \*End of a pencil, sometimes  
21. \*"Back to School" star  
23. Asian restaurant frying pan  
24. Anne \_\_\_ of gothic fiction fame  
25. \_\_\_ Beesly of "The Office"  
28. Cote d'Azur city  
30. Opposite of comic  
35. Major mountain chain in Russia  
37. It launched Columbus, acr.  
39. Walk through slush  
40. Lindsey Vonn's prop  
41. \*Geography class prop  
43. Bear in the sky  
44. Idealized imaged of someone  
46. Reflect deeply  
48. Dismiss (2 words)  
50. Not want  
52. Albanian money  
53. \*Cafeteria ware  
55. Rare find  
57. \*Paper holder  
60. \*Fictional high school in "Grease"  
63. Pope's court  
64. Barley brew  
66. Run-of-the-mill  
68. Boat contents  
69. Little bit  
70. Tale, in France  
71. Small island  
72. I, to Claudius  
73. Terminated

DOWN  
1. Fleur-de-\_\_\_  
2. Sometimes it's enough  
3. Wild ox of India  
4. On spouse's side  
5. Infamous Baby Face  
6. A long way off  
7. Network at 30 Rock  
8. Wispy clouds  
9. Yemen's neighbor  
10. \_\_\_ receiver  
11. The Trump's spaghetti-slurping companion  
12. Limit, to some  
15. Bovine milk dispensers  
20. Increasing  
22. Month X  
24. Reverberate  
25. \*Student  
26. Scent, usually pleasant  
27. Malaysia native  
29. \*"Keep \_\_\_ and Carry On"  
31. \*One at high school reunion  
32. Small Asian ungulate  
33. September edition, e.g.  
34. \*Dry-erase marker predecessor  
36. Toy construction set  
38. Having the know-how  
42. Lament for the dead  
45. When one is not oneself (2 words)  
49. Joker to Batman, e.g.  
51. \*Do this in Math class  
54. \*Do this in Speech class  
56. Subatomic particle  
57. Sable and beaver, e.g.  
58. \*Type of exam  
59. Like SNL  
60. \*Grader's suggestion  
61. City in Sweden  
62. \*A day \_\_\_ and a dollar short"  
63. Some special effects, acr.  
65. Fall behind  
67. Type of Christmas lights

BRING EVERYTHING YOU LOVE TOGETHER!  
Blazing Fast Internet! \$19.99  
2-YEAR TV PRICE GUARANTEE \$69.99  
CALL TODAY - For \$100 Gift Card  
1-888-416-7103



# WASHINGTON OUTDOORS REPORT

## Reintroducing Chinook Salmon above Grand Coulee Dam

By JOHN KRUSE

Chinook salmon have not been swimming in the waters of the Upper Columbia River above Grand Coulee Dam since it was built in 1941 but several Native American tribes in our region are working on bringing them back.

I recently had a chance to chat with Conor Giorgi, the Anadromous Program Manager at

Spokane Tribal Fisheries, about this subject. I asked Conor why no fish ladder was installed at Grand Coulee Dam so the salmon could get past the dam like others on the Columbia River.

Giorgi said a fish ladder was planned for the dam but as the dam grew bigger and taller, the construction of a fish ladder became unfeasible. There were efforts made after the dam was constructed to trap Chinook salmon at Rock Island Dam near Wenatchee and transport the fish above Grand Coulee Dam but the efforts to sustain the Chinook salmon in Lake Roosevelt and further north into Canada failed within a few years of the dam being built.

Grand Coulee Dam is not the only dam without a fish ladder. The next dam downstream, Chief Joseph Dam, which was built in 1950, also lacks a fish ladder and all migratory salmon passage has been blocked upstream of this dam near Bridgeport to the headwaters of the river in British Columbia.

Asked about the possibility of installing fish ladders at these two dams now, Giorgi said they would be unlikely to work because the fish would simply have to expend too much



Juvenile salmon being released.

energy attempting to make it past these dams. Instead, they are trapping salmon and hauling them above Grand Coulee Dam. However, they are not necessarily releasing them right above the dam.

Giorgi points out Lake Roosevelt is 150 miles long and the Spokane Tribe, in partnership with the Confederated Tribes of the Colville Reservation and the Coeur d'Alene Tribe to release the trapped salmon in multiple locations in the Upper Columbia and tributaries above the dam, to include the Spokane River watershed.

Giorgi went on to explain that the Upper Columbia tribes are taking the lead on this project because, "They have connections with the salmon that go back millennia. The (Chinook) are not just a food source, they are a staple of their cultural and spiritual well-being."

Efforts to reintroduce salmon into river drainages above Grand Coulee Dam have been ongoing since 2015. The first adult Chinook were released into this area in 2019 and the first juvenile Chinook were released into a creek on the Spokane Tribal Reservation in 2017. In 2022, 146 adult Chinook were released into the Spokane River, and some of these fish were released into a part of the river that had not seen the presence of these fish since 1911 when Little Falls Dam was built.

The specific stock of fish being used are summer Chinook salmon because of their abundance in the Upper Columbia. Biologists tagged 752 yearling salmon in 2017 that were released to migrate downstream. Of these fish, only 234 were detected passing over Bonneville Dam and only 75 were detected in the Columbia River estuary

near Astoria. However, one of these fish made it back as a spawning adult in the summer of 2019. The salmon made it back to the Chief Joseph Hatchery fish ladder and the remains of the fish were transferred to Tshimakain Creek where it was released as a juvenile fish two years earlier.

This second phase of salmon reintroduction above Grand Coulee Dam is expected to go on for some 20 years and with any luck, we'll be seeing healthy populations of these iconic salmon swimming in the waters and tributaries of the Columbia River in harvestable numbers above the dam by that time or sooner. To find out more about this project go to [www.ucut.org](http://www.ucut.org).

John Kruse - [www.northwesternoutdoors.com](http://www.northwesternoutdoors.com) and [www.americasoutdoorsradio.com](http://www.americasoutdoorsradio.com)

# Dolly Parton to visit Washington for statewide celebration of Dolly Parton's Imagination Library

SUBMITTED BY IMAGINATION LIBRARY OF WA

**Olympia** - On Tuesday, August 15, legendary icon, musician, and philanthropist Dolly Parton will visit Washington State to celebrate achieving statewide coverage of the Imagination Library. All Washington children from birth to age five can now register to receive one book every month, for free, from Dolly Parton's Imagination Library.

August 15 will also be signified by a proclamation from Governor Jay Inslee and Lieutenant Governor Denny Heck as "Imagination Library of Washington Day".

Governor Inslee expressed, "We welcome the great Dolly Parton to celebrate our statewide program and promote registration for our youngest learners into the Imagination Library. It is important to get high quality books to children from a young age and ensure that their families, and their unique races, ethnicities and identities are well-represented among the selection of books."

Hosted by the Imagination Library of Washington, the celebratory event will feature

a fireside chat with Dolly Parton, a small performance, and recognition of champions from across the state who are making Dolly's dream possible for Washington's earliest learners.

This invite-only event will be broadcasted and streamed live on TVW and available to view on both Imagination Library of Washington and TVW social media channels beginning at 2:30 p.m. on Tuesday, August 15, and all are invited to tune in.

"We did it, Washington. This is such a magnificent moment and achievement. Our team, program affiliates, state leaders, and partners have been on a quest to make this happen for the children of Washington, ensuring that all early learners have equitable access to this magical, connective, world-class literacy opportunity. What a positive, collaborative adventure this has been, and now we take a moment to celebrate and continue igniting support and enthusiasm around this for our future generations," stated Executive Director of Imagination Library of Washington, Brooke Fisher-Clark.

Dolly Parton's Imagination Library of Washington was

established in June 2022 by legislative direction, sponsored through a partnership with the Office of Superintendent of Public Instruction (OSPI) and the Department of Children, Youth, & Families (DCYF), and administered by United Ways of the Pacific Northwest. The program provides a high quality, age-appropriate book each month in the mail to enrolled children from birth to age five - at no cost to families in all 39 Washington counties. Currently, more than 65,000 children in Washington are enrolled in Dolly Parton's Imagination Library and in total, more than 1.6 million books have been gifted to children across the state. Prior to state commitment, Dolly Parton's Imagination Library was only available in a handful of Washington regions.

"It's been an honor to support the expansion of early literacy across Washington," said State Superintendent Chris Reykdal. "By providing free books to our youngest learners, the Imagination Library is breaking down barriers to skills that will support Washington children for a lifetime. OSPI is grateful to our partners for supporting this work."

"Books develop literacy habits, strengthen ties between adults and children, and help children overcome intergenerational poverty," said DCYF Secretary, Ross Hunter.

Inspired by her father's inability to read and write, Dolly started Dolly Parton's Imagination Library in 1995 for the children within her home county of Sevier County, Tennessee. Today, her program spans five countries and gifts more than 2.4 million free books each month to children around the world. In March of 2023, Dolly Parton's Imagination Library reached a monumental global milestone: gifting more than 200 million books to children worldwide.

Dolly Parton's Imagination Library is backed by decades of research showing that having access to books in the home inspires a love of reading and promotes changes in home literacy environments, while building important foundational skills for entering kindergarten ready to succeed. Families with children under five can sign up for the Imagination Library by visiting [www.imaginationlibrarywashington.org](http://www.imaginationlibrarywashington.org).

**BUSINESS & SERVICE Directory**

Add your business or service to this directory: 509-548-5286

DRILLING

**Tumwater Drilling and Pump Inc.**

*"Water Treatment Systems Built to Your Individual Problem"*

**Free Water Analysis/Estimates**

Conveniently located on Hwy 2 across from the Big Y Cafe in Dryden @ 9290 Hwy 2

**Tumwater Drilling & Pump, Inc.**

509-548-5361

[www.tumwaterdrilling.com](http://www.tumwaterdrilling.com) • email [info@tumwaterdrilling.com](mailto:info@tumwaterdrilling.com)

WATER SOFTENERS, IRON FILTERS, CONDITIONERS, UV FILTERS, REVERSE OSMOSIS, SULFUR, WHOLE HOUSE FILTERS, PREVENTATIVE MAINTENANCE, SERVICE, SALT SALES

EXCAVATION

**Complete Excavating Service**

Power & Water Systems  
Dump Truck & Dozer  
Drainfield Repair  
Free Estimates  
Septic Systems  
Road Grading

**Upper Valley EXCAVATING**

(509) 548-3489  
Leavenworth, WA

Licensed - Bonded - Insured

STORAGE

Have spare room in your facility? Advertise on [NCWMarket.com](http://NCWMarket.com)

STUMP REMOVAL

**Quick 'n Easy Residential Stump Removal**

**STUMPS UNLIMITED**

10817 North Road, Leavenworth • (509) 548-8222  
Kim & Rosalie Kozelisky  
Licensed, Bonded, Insured • Cont. #UPPERVE200PI

**Community Cupboard**  
A Program Of Upper Valley MEND

219-14th St.

Please help us meet our needs by donating the following items:  
• Cereal • Juice • Canned Fruit • Cooking Oil • Eggs • Meats • Chili • Soups

Open: Monday through Saturday 11 a.m. - 5 p.m.  
509-548-6727

211-14th St.

**Das Thrift House**

Open: Monday-Sunday, 10:30 am-5 p.m.  
Kindly bring donations to our sorting center.  
509-888-9990

This announcement sponsored by The Leavenworth Echo

**Donate Your Vehicle**

Call (844) 889-8170 to donate your car, truck, boat, RV, and more today!

**How it Works:**

1. Contact Us Call (844) 889-8170
2. Schedule Pickup We'll pick up your vehicle for FREE - at a time and place convenient for you.
3. Receive Top Tax Deduction You may qualify for a tax deduction.

- Support Veteran Nonprofits.
- Free Pickup & Towing.
- Top Tax Deduction.

**Donate Your Vehicle Today**  
**844-889-8170**

While we appreciate every donation, in some cases, we find that we are unable to accept certain vehicles, watercraft, and/or recreational vehicles due to the prohibitive costs of acquisition. If you have any questions, please give us a call at (844) 889-8170.

AMERICA'S ORIGINAL BUTCHER  
**OMAHA STEAKS**  
SINCE 1917

**Classic Cookout Collection**

- 4 Butcher's Cut Filet Mignons (5 oz.)
- 4 Air-Chilled Chicken Breasts (5 oz.)
- 4 Omaha Steaks Burgers (4 oz.)
- 4 Gourmet Jumbo Franks (3 oz.)
- 4 Individual Scalloped Potatoes (3.8 oz.)
- 4 Caramel Apple Tartlets (4 oz.)
- 1 Omaha Steaks Seasoning (3 oz.)
- 8 FREE Omaha Steaks Burgers (4 oz.)

73818JQM separately \$274.99 **\$129.99**  
SPECIAL INTRODUCTORY PRICE

**Limited Time: Get 8 FREE Burgers**

Order Now! 1.877.587.8821 ask for 73818JQM  
[OmahaSteaks.com/Classic5654](http://OmahaSteaks.com/Classic5654)

Savings shown over aggregated single item base price. Limit 2, 8 free 4 oz. burgers will be sent to each shipping address that includes 73818. Standard S&H added per address. Offer available while supplies last. Cannot be combined with other offers. Other restrictions may apply. All purchases acknowledge acceptance of Terms of Use: [OmahaSteaks.com/terms-of-use/OSI](http://OmahaSteaks.com/terms-of-use/OSI). Expires 09/30/23. | Omaha Steaks, Inc.

Your local news is just a mouse-click away.

**The Leavenworth Echo**  
[www.leavenworthecho.com](http://www.leavenworthecho.com)