



Autumn Leaf Festival to Bring Street Closures and Detours

North Central Washington Businesswoman Mobilizes Community to Raise \$10,000 for Women's Service League

By QUINN PROPST
Ward Media Staff Reporter

North Central Washington businesswoman Erica Mendoza leveraged community support to award \$10,000 to the Women's Service League of North Central Washington, a service organization that works to empower women in the region.

As an individual, it can be hard to feel like you are making a difference, but the Women's Service League is a way for women to give back to their community in ways that make an impact, Mendoza said.

Mendoza, owner of East Wenatchee's Mendoza Insurance Services, initially received a \$5,000 donation for the Women's Service League, thanks to a submission process with Liberty Mutual® and Safeco Insurance® through their 2023 Make More Happen™ Awards. A story of their local partnership was featured on the official Make More Happen microsite where Mendoza Insurance had the opportunity to raise an additional \$5,000 by conducting a local awareness campaign for the nonprofit. Together with the community, the goal was met, increasing the total donation to \$10,000 for WSL.

"Women's Service League is super unique in that when you are trying to help in the community, you want to make sure that the impact is visible because we're just one person in what we can do," Mendoza said in the local awareness campaign video. "And it allows me to create positive connections and returns, I guess like an ROI, that you can truly see how it helps others. The places that we support and the women that are impacted by what we do are very visible, and that helps you continue to do the work."

"I have been a part of Women's Service League for many years, and this will give the ability for me to contribute as an upcoming community member and be a part of something that has been very precious to me and helped me develop myself and get myself more confidence and be a part business-wise in the community," Mendoza said in the video.

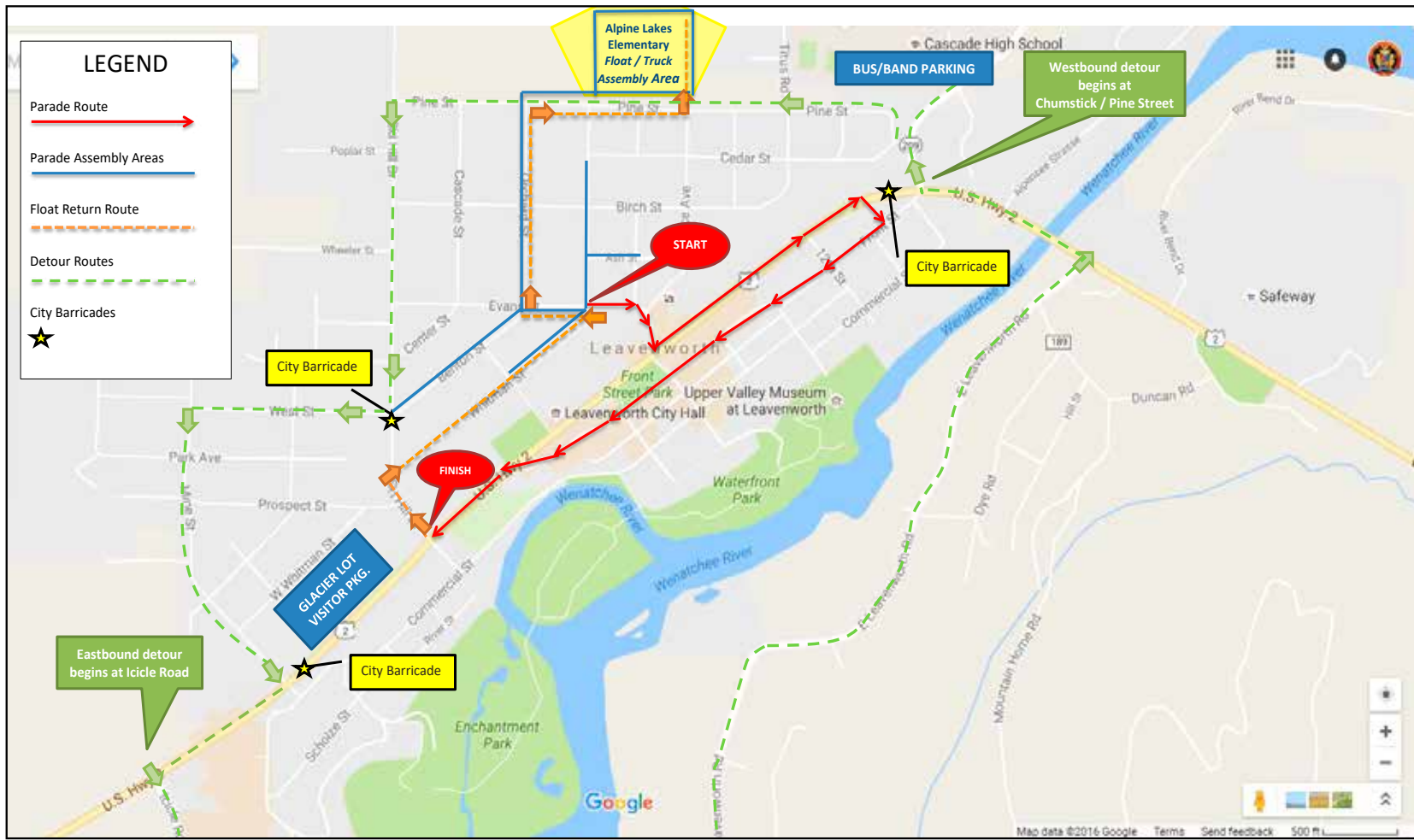
The Women's Service League is dedicated to building a community through the empowerment of women and deliberate volunteer action. They host many events throughout the year to raise money to help women and children. Their biggest fundraiser is My Girlfriend's Closet, a three-day shopping event that sells new and gently used women's clothing, shoes, jewelry, and purses at low prices. The majority of the proceeds are distributed back into the community in many ways, including scholarship funds for women returning to college and grants to local nonprofits that primarily help women and children.

Last year, the Women's Service League gave \$10,000 in scholarships to women returning to college and \$60,000 in grants to North Central Washington nonprofits for women and children.

The award will help the league run its fundraising events, and the remainder will help the Women's Service League to help others in the region, league president Sue Epoch said.

"It takes a little pressure off some of the upfront expenses," Epoch said.

See SERVICE LEAGUE Page B4



2023 Autumn Leaf Parade - September 23, 2023.

WARD MEDIA
Leavenworth Echo

LEAVENWORTH - The town of Leavenworth is gearing up for its annual Autumn Leaf Festival, set to take place on the weekend of September 23 and 24. As residents and visitors prepare for this beloved event, organizers have announced important information regarding street closures and detours that will be in effect to ensure a smooth and safe celebration.

The festival, known for its vibrant colors and lively atmosphere, will temporarily transform downtown Leavenworth into a hub of excitement. However, with the influx of attendees and the planned parade, some roadways will experience closures and detours on Saturday, September 23. Organizers advise all travelers to plan

their routes accordingly to avoid any inconvenience.

Two flagger-controlled detours will operate from 11:30 a.m. to 2 p.m. on Saturday, September 23. It's important to note that these detours are exclusively for passenger vehicles. Semi-trucks and oversized vehicles are strictly prohibited from using them during the festival.

Westbound Highway 2 Closure and Detour:

Westbound Highway 2 will be closed just west of Chumstick Highway during the specified hours. Travelers may detour through town following this route:

- North on Chumstick Highway
- North on Fir Street

- West on Pine Street
- South on Ski Hill Drive
- West on West Street
- South on Mine/Mill Streets
- West on US 2

Eastbound Highway 2 Closure and Detour:

Eastbound Highway 2 will be closed just past Mill Street during the same timeframe. Travelers may detour through town following this route:

- South on Icicle Road
- East on East Leavenworth Road
- East on US 2

Additionally, Front Street will experience closures during the parade, extending from the Dan's Food Market parking lot, just west of 14th Street, to US 2 at Gustavs. This closure will be in effect until 2 p.m., after which Front

Street will reopen from 14th Street to 10th Street. Front Street is currently closed to vehicular traffic from 10th Street to US 2 at Gustavs.

US 2 will remain open to 14th Street, allowing residents and visitors to access businesses on and around Commercial Street during the temporary closure.

For those attending the Autumn Leaf Festival, review the attached map to familiarize yourself with the parade route. All side streets throughout town will be barricaded during the parade from 11:30 a.m. to 2 p.m.

The Autumn Leaf Festival promises to be a weekend filled with fun, festivities, and the beauty of autumn in Leavenworth. By staying informed about the road closures and detours, attendees can ensure a smooth and enjoyable experience as they celebrate this cherished community event.

Photo Courtesy of City Of Leavenworth

Community Treasure Hunt Raises Funds for Local Schools

By MARLENE FERRALL
Special to Ward Media

LEAVENWORTH - The Cascade Education Foundation (CEF) is set to host the much-anticipated Charm Walk on Saturday, September 23, in downtown Leavenworth. This whimsical treasure hunt coincides with the Autumn Leaf Festival and promises a day of delightful discovery and community engagement.

The Charm Walk, running from 10 am to 4 pm, offers participants the chance to embark on a charming adventure through Leavenworth's local shops to find unique charms for their bracelets. CEF board chair, Karen Turner, expressed her enthusiasm, stating, "The Charm Walk is a local favorite that appeals to kids, parents, residents,

and visitors alike." This year, 24 businesses have eagerly contributed to the event, aiming for a triple win - attracting new customers, delighting participants, and supporting CEF's mission to fundraise for Cascade School District students.

All proceeds from the Charm Walk will directly benefit Cascade School District students, providing much-needed supplies and teacher grants for innovative programs. As a 501(c)(3) nonprofit, CEF is dedicated to supporting the evolving educational needs of the Cascade School District, particularly during these challenging times when the pandemic has hindered traditional fundraising efforts.

To participate, individuals can visit CEF's booth at the gazebo on Saturday, September 23, where they

can sign up for \$20 (cash, check, or Venmo). Each participant will receive a bracelet and a map to guide them on their charming quest. A wide variety of quirky charms, including a teacup, toucan, whale, apple tree, fish with pastel scales, copper flower, and dragonfly, among others, will be available at participating shops.

For those who wish to preregister, a Venmo payment of \$20 per person to @CascadeEdFoundation with the note "Charm Walk" will secure their spot. If unable to attend but still want to support CEF's cause, donations can be made via Venmo or by mailing a check to CEF, PO Box 683, Leavenworth, WA 98826.

Earlier this summer, the eight-member CEF board engaged the community as Recreation

Ambassadors through the Chamber of Commerce to raise funds. Later this year, CEF will award grants to teachers, with the application window open until November 1st. Additionally, CEF is actively seeking new members for its board, with a particular need for individuals to enhance the organization's social media presence. Parents of Cascade School District students are also encouraged to join the board or volunteer core to ensure a strong connection between CEF and the classroom.

For those interested in contributing or becoming involved, please contact Karen Turner at karenandmonty@gmail.com.

Marlene Ferrall:
marlene@team-ferrall.com

Inside The Echo this Week

Section A	Section B	Inserts
5 things to do this week.....2	Letter to Editor.....1	Dan's Market
Bulletin Board.....3	The Whistle.....1	Safeway
Michelle's Kitchen Table.....4	Outdoors Report.....4	
Church Guide.....4	Sheriff's Report.....4	



P.O. Box 39,
Leavenworth, WA 98826
Phone: 509-548-5286
www.leavenworthecho.com





© Ward Media, LLC 2023



On the Internet

Website:
www.leavenworthecho.com
E-mail:
news@ward.media

Office hours

Hours: 9 a.m. - 5 p.m. except weekends, or call 509-548-5286

Contact information

CEO & Publisher
Terry Ward

509-731-3284
terry@ward.media

COO & Co-Owner
Amy M. Yaley

509-731-3321
amy@ward.media

Advertising Sales

Lindsay Timmermans

509-860-7301
lindsay@ward.media

Circulation

509-293-6780
circulation@leavenworthecho.com

Deadlines

Calendar Listings: Noon, Friday
News Submissions: Noon, Friday
Letters to the Editor: Noon, Friday
Display Advertising: Noon, Friday
Legal Notices: Noon Friday
Classified Ads: Noon Friday

Subscriptions

In Chelan County (yearly) **\$40**
\$5.00 to include online subscription
In State-Out of County (yearly) **\$50**
Online E-edition **\$40**

The Leavenworth Echo does not refund subscription payments except to the extent that it might fail to meet its obligation to publish each week, in which case the cost of the issues missed would be refunded as an extension. Subscriptions may be transferred to another individual or organization.

Toll Free 509-293-6780



© Ward Media, LLC prints on recycled newspaper with soy ink. Please recycle.

Letters policy

The Leavenworth Echo welcomes letters to the editor. All letters must be accompanied by the author's name, a home address and a daytime phone number (for verification purposes only). Letters may be edited for length, clarity, accuracy and fairness. No letter will be published without the author's name. Thank you letters will only be printed from non-profit organizations and events. We will not publish lists of businesses, or lists of individual names.

Email your letters to letters@ward.media.

Corrections

The Leavenworth Echo regrets any errors. If you see an error, please call 509-548-5286. We will publish a correction on this page in the next issue.

News tips

Have an idea for a story? Call the Echo at 509-548-5286
email news@ward.media

Classified Advertising

Classified ads can be placed during normal office hours by calling 509-548-5286 or by emailing classifieds@leavenworthecho.com.

Legal Advertising

Legal ads can be placed during normal business hours by calling 509-548-5286 or by emailing legals@ward.media

Obituaries

Obituaries can be placed during normal business hours by calling 509-548-5286 or by emailing obits@ward.media

Services

Back Issues are available up to one year after publication for a small fee. Archive Research \$25 per hour

Classified Weekly Rates

\$15.00 for first 30 words .10 for each additional word over 30 words Borders, bold words, headlines, logos and photos subject to additional charges.

Get your event in the spotlight with Ward Media!

If you have an exciting event to share, email Reporter Quinn Propst at quinn@ward.media. We'll showcase the five most captivating events of the week, giving your event the recognition it deserves. Even if your event isn't among the top five, it will still be added to our events calendar and featured online. Don't miss this chance to make your event shine!

5 THINGS TO DO THIS WEEK



Book Signing

Local author Kay Kenyon will be signing copies of her books on Saturday, Sept., 16 from 1-3pm at A Book For All Seasons.

"The Arisen World series is a four book fantasy series based in myth, multiple realms, and the crossings that connect them," the event page states.

The first two books in the series, The Girl Who Fell into Myth and Stranger in the Twisted Realm will be available at the signing. Book three will be out in February 2024.

For more information visit bookforallseasons.com.

Sustainable Living and Farming Tour

Waste Loop is hosting a Sustainable Living and Farm Tour over the weekend of Sept., 15-17. "Over the course of one weekend, participants

will choose between various workshop offerings and site visits that educate, inspire and motivate a path towards sustainable living," the event page states. Workshops cover a variety of topics including pruning, compost and rewinding our food web. Participants can tour a flower and fruit farm with a fruit stand and cider press, or learn to make a bee hotel. One tour is a walk through a medicinal tea garden and participants can go home with their own bundle of herbs for tea.

Visit wasteloop.org for more information.

A Night in Paris

The Icicle Creek Center for the Arts will host the performance A Night in Paris on Saturday, Sept., 16 from 7:30 to 9 pm.

"Join us on a journey through the romantic streets of Paris," the event

page states. "The fabulous A Night in Paris performers transport audiences to the Moulin Rouge with a high-energy Can-Can, into a smoke filled 60's beatnik, and onto the Champs-Elysees filled with statuesque dancers."

For more information visit icicle.org.

Jive Time in the Cascades

The Cascade Medical Foundation fundraiser Jive Time in the Cascades will be at the Snowy Owl theater on Sunday, Sept., 17 from 6-9pm.

"Toe-tapping, swinging and swaying are encouraged at Jive Time in the Cascades, a benefit concert featuring Wenatchee Big Band," the event page states. "Proceeds benefit Cascade Medical

Foundation's efforts to support Cascade Medical and community health."

There will also be a pre-concert social with a gourmet charcuterie table.

For tickets and more information visit icicle.org.

Stories from the Cascade Mountains

The Leavenworth Library will host a night of story

sharing called Stories from the Cascades on Tuesday, Sept., 19 from 6:30-8 pm. for ages middle school and up.

"Join us for an evening of short stories told by our friends and neighbors about spending time outdoors," the event page states. "Light refreshments provided by the Friends of the Leavenworth Library. If you have a story to share, please talk with library staff before the event."

In a heartwarming celebration of love, Steven D and Marla Hanson, formerly known as Marla McKittrick, have marked an incredible 50 years of wedded bliss. The duo tied the knot on September 8th, 1973, in Spokane, and now call Turtle Rock Estates in Wenatchee, their home. Steven dedicated over five decades to the construction industry in the Leavenworth area, while Marla had a successful career at Food Pavilion. Their unwavering commitment to each other has seen them through life's ups and downs, creating a romance that has stood the test of time.

Steven D and Marla Hanson celebrate Golden Anniversary



Your Future, Planned with Care.

Investment Management
Retirement Planning
Financial Planning

Brad Blackburn, CFP® Stephen Allen, CWS®

509-782-2600 121 Cottage Ave Cashmere, WA 98815
Blackburn Financial
Registered Investment Advisor

JOE BROWN
J.C. BROWN LAW OFFICE
200 APLETS WAY, CASHMERE
782-1111
BUSINESS, REAL ESTATE,
ESTATE PLANNING, AND PROBATE

PROTECT
WHAT MATTERS MOST

Whether you are home or away, protect what matters most from unexpected power outages with a Generac Home Standby Generator.

FREE
7-Year Extended Warranty*
A \$735 Value!

SO MONEY DOWN + LOW MONTHLY PAYMENT OPTIONS
REQUEST A FREE QUOTE
CALL NOW BEFORE THE NEXT POWER OUTAGE
(888) 674-7053

GENERAC

Connect Anywhere, Anytime.

Enjoy Free Internet Data on Your Mobile Devices with the Affordable Connectivity Program. You qualify if you receive:

- Medicaid
- Veterans Pension
- SNAP
- Survivors or Lifeline Benefits
- SSI
- Tribal Assistance Program
- WIC
- Housing Assistance

maxsip

Get a subsidized 4G Android Tablet for \$20

CALL TODAY (866) 788-1147

Downtown Steering Committee, 10 a.m., meet in the Council Chambers and Zoom. (4th Tues.)

Planning Commission: 7 p.m., Council Chambers and Zoom. (1st Wed.)

PRSA Meetings: 3 p.m., City Hall Conference Room (Upstairs) (2nd Wed.), every other month (May, July, Sept., Nov., Jan., and Mar.).

Design Review Board: 3 p.m., meets in the Council Chambers and on Zoom. (2nd & 4th Wed.)

Parking Advisory Committee: 4 p.m., meet in the City Hall Conference Room and on Zoom. (3rd Thurs.)

City Council Study Session: 5:30 p.m. City Hall Council Chambers, (2nd Floor) and Zoom. (2nd & 4th Tues.)

City Council Evening Meeting: 7 p.m., City Hall in

NORTHWEST SWAG WORKS
APPAREL & PROMOTIONAL PRODUCTS

Elevate Your Brand
with Style and Imagination!

Discover a world of endless possibilities at **Northwest Swag Works** – where creativity meets functionality. With a staggering selection of 1.5 million products sourced from over 3000 suppliers, we're your one-stop shop for all things promotional. Whether you're looking to make a lasting impression, strengthen client relationships, or reward your hardworking team, we've got just the thing you need.

29 S. Wenatchee Ave, Suite A • Wenatchee, WA 98801
509-731-3624
www.northwestswag.com

Community Bulletin Board

Local, Regional Community News & Events

Any non-profit 501(c)-(3) group, person(s). Must provide: full name, city, phone number. Items pertaining to local events that are free or minimum charge. Want to place Your Community News Online? Go to ncwmarket.com 24/7. Garage and Yard Sale Ads are paid events, please email: classifieds@leavenworthecho.com or place online at ncwmarket.com. To submit info call 509-548-5286 or email: news@ward.media.

Community Calendar

Wednesday

Children and Youth Program, 6:30-8 p.m., 4th-12th grade, Leavenworth Church of the Nazarene, 509-548-5292.
Alpine Water District, meets at the Lake Wenatchee Fire and Rescue, 1 p.m. Contact Anne Mueller, 425-238-3935.
Senior Center, Lunch, noon, \$8 per meal. RSVP 509-548-6666.
Ukulele Circle, 5:30- 6:30 p.m. every Wednesday at the Peshastin Library. Please come 15 minutes early to tune and get sheet music.
Cascade Medical Board, 4th Wednesday of every month (with a couple exceptions), September 27, October 25, November 15, and December 20, 5:30 p.m.

Thursday

Leavenworth Chamber of Commerce, 8 a.m. Call Chamber, 509-548-5807. Everyone is invited to attend as a guest. Email Troy@leavenworth.org for meeting information. (1st & 3rd Thurs.)
Leavenworth Lions Club, For more info. President Steve Alford, 509-548-4505, or email leavenworthlionsclubwa@gmail.com
Peshastin Community Council meeting, 7 p.m. Peshastin Memorial Hall. (2nd Thurs.)
The Wenatchee Valley Doll Club, 11:30 a.m. Call Yvonne, 509-663-7991. (2nd Thurs.)
Caregiver Support Group, 2-3:30 p.m. For Caregivers of those with Memory Loss. The Henry Building, 120 Cottage Ave. Cashmere. Contact Carmen Gamble, 509-393-0789. (1st & 3rd Thurs.)

Friday

Veteran Service Office, For information contact Tony Sandoval, 509-664-6801 or email: tony.sandoval@co.chelan.wa.us
Leavenworth Rotary Club, In person at Kristall's Restaurant at Noon. Call President Mahala Murphy-Martin, 206-227-1576, for more information.
Senior Center: Bingo 6 p.m. Call 509-548-6666. Facebook & website: leavenworthseniors@gmail.com

Monday

Upper Valley Free Clinic, open every Monday to evaluate urgent health needs. Downstairs at Cascade Medical, 6:30 -8:00 p.m. Call UVMEND, 509-548-0408 for more information.
Leavenworth Mosquito District board meeting, 7 p.m. via ZOOM link posted at <https://leavenworthmosquitocontrol.org/activity-calendar.html> or contact Jenny 509-548-5904 (1st and 3rd Mon.)
Cascade School board meetings, 7 p.m., Agenda can be found at <https://www.cascadesd.org/Page/166>. (2nd & 4th Mon.)
Chelan Douglas Republican Women, Monthly meeting and luncheon 1st Monday of the month (unless it's a holiday). \$21. for lunch, \$8. for sitting only. 11 a.m. check in starts, noon for meeting and speaker. Wenatchee Convention Center 121 N. Wenatchee Ave. For information and reservations, please call, Angela Dye, President, 509-668-1105 (1st Mon.)

Tuesday

Peshastin Water District, 5:30 p.m. For meeting location, contact Steve Keene, 509-548-5266. (2nd Tues.)
Iceicle & Peshastin Irrigation Districts Meeting Current meeting time is 8 a.m. at 5594 Wescott Drive. Call Levi Jantzer, cell 509-607-0278, 509-782-2561, or levi.ipid@nwi.net (2nd Tues.)
Cascade Education Foundation, Contact: CEF@cascade.org
LWSC Alpine Committee, 7 p.m., Ski Hill Lodge. Call 509-548-5477. (1st. Tues.)
Leavenworth Masons, 7:30 a.m., Zarthan Lodge No. 148, Leavenworth Senior Center upstairs. www.leavenworthmasons.org. (1st Tues.)
Cascade Garden Club, 1 p.m., at a member's home or other venue. Call President Claudia, 509-662-7706. (3rd Tues.)
The Chelan County Cemetery District #2 (Peshastin) meets monthly at 6 p.m., at the Memorial Hall, located at 10204 Main Street. (2nd Tues.)
Senior Center, Exercise, 11 a.m.-Noon. Tues & Thurs. 509-548-6666. Facebook & Website: leavenworthseniors@gmail.com
Music, call Steve, 509-548-7048. (1st and 3rd Tues.)
Greater Leavenworth Museum board meeting 5-7 p.m. Everyone is invited as a guest. Contact info@leavenworthmuseum.org for meeting information. (1st Tues.)

NCW Libraries

Libraries will continue to offer a wide variety of resources and programs online at ncwlibraries.org and its Facebook page. Go to NCWLIBRARIES.ORG or 1-800-426-READ (7323) for more information, and updates.
Leavenworth Public Library. Located at 700 Hwy. 2, Call 509-548-7923 or online leavenworth@ncwlibraries.org Open on Tues., 10-5, Wed., 11-7, Thurs., 10-7, Fri., 10-5 Sat., 10-2. Closed Sun. and Mon.
Peshastin Public Library. Located at 8396 Main St., Peshastin. Call: 509-548-7821 or peshastin@ncwlibraries.org Open Tues., 10-1:30; and 2:30-7, Wed., 10-2, and 2:30-7, Thurs., and Fri., 1-5:30 and Sat., 10 a.m- 2 p.m. Closed Sun. and Mon.

Other events

The Greater Leavenworth Museum, formerly known as the Upper Valley Museum. Now open daily 11-4. Check their Facebook page or website at <http://www.leavenworthmuseum.org> www.leavenworthmuseum.org for updates and information.
Leavenworth Fish Hatchery, 509-548-7641. Trails and grounds are open every day to the public. Please park outside the gate. All animals must be on a leash.
Note: Some meetings or events may be rescheduled due to holidays or other closures. Please call and check with that organization listed.
 Please note that if your organization changes dates, or hours please send us your updates to reporter@leavenworthecho.com or call 509-548-5286. Otherwise we are not responsible for any misinformation.

Meeting Schedules For AA, Alanon, Celebrate Recovery

AA Meetings:
 Call for the Zoom link to Leavenworth AA meetings: 541-480-8946
 Call for the Zoom link to Leavenworth Alanon meetings: 509-548-7939
 509-548-1627, 548-4522, 664-6469, 206-719-3379
 Sunday 7 p.m., Leavenworth Senior Center, 423 Evans St.
 Tuesday, 7 p.m., Light in the Valley, 8455 Main Street, Peshastin
 Wednesday, 7 p.m., Leavenworth Senior Center, 423 Evans St.
 Thursday, 1 p.m., Leavenworth Senior Center, 423 Evans St.
 Friday, 7 p.m., St. James Episcopal Church, 222 Cottage Ave.
Alanon Meetings, Call 509-548-7939
Renewed Celebrate Recovery, Every Tuesday at 6:30 p.m. at Leavenworth Church of the Nazarene. 111 Ski Hill Drive. Come experience God's grace for all of life's hurts, habits and hang-ups. For more information: CelebrateRecoveryLCN@gmail.com or 509- 596-1510.

Leavenworth

Stories from the Cascade Mountains

The public is invited to partake in an evening of captivating short stories recounting outdoor adventures. Hosted by the Leavenworth Public Library, this event offers a platform for friends and neighbors to share their personal experiences in the scenic mountain zones of the area.

Individuals eager to contribute their own narratives are encouraged to approach library staff before the event. For those who simply relish mountainous tales, the gathering promises an opportunity to share and revel in these stories, accompanied by light refreshments.

Mark your calendars for Tuesday, September 19, from 6:30 p.m. to 8 p.m., and join the community at this engaging event. For inquiries or more information, please contact 509-548-7923.

Charm Walk Fundraiser

Don't miss this charming fundraiser for Cascade Education Foundation on Saturday, September 23, 10 a.m.-4 p.m. Charm bracelets are \$20 and can be purchased on the CEF website at cascadedeefoundation.org. Pick up bracelets on Sept. 23 at the Gazebo on Front Street.

It's Jive Time in the Cascades

Wenatchee Big Band performs at 6 p.m. Sept. 17 at the Snowy Owl Theater, 7409 Iceicle Road, Leavenworth. The concert is a fundraiser for Cascade Medical Foundation. Tickets, \$40, are available at icicle.org or at the door. A pre-concert social and gourmet charcuterie table is 4:30 to 6

p.m. Tickets are \$25, also available through the ICCA box office, icicle.org. Pre-sale only. For information, go to cascademedicalfoundation.org

Sustainable Living and Farming Tour

Learn more about living a simpler and more sustainable life by visiting examples and partaking in hands-on applications in the greater Leavenworth area over the course of a weekend. Friday, Sept. 15 - Sunday, Sept. 17. For more info and to register for workshops and tours, visit www.wasteloop.org.

Red Barn Event - Inspiring Community-driven Conservation

The first Red Barn Event of the 2023-2024 season and is in partnership with Trust for Public Land (TPL). Northwest Director at TPL, Mitsu Iwasaki works to create and preserve green spaces so that more people can connect to the joys and benefits of the outdoors. He leads projects across the region to create sustainable working forests that increase recreation opportunities and boost rural economies. This is a FREE event with a donation basket at the door. Doors open at 6:30pm for a community social with beer and wine available for purchase. The presentation will start at 7:00pm. HYBRID EVENT: WRI's Red Barn 347 Division Street, Leavenworth or livestream via Zoom. For more information and the Zoom link visit wenatcheeriverinstitute.org.

Cascades Track and Sign Evaluation with David Moskowitz

Spend two full days in the greater Leavenworth area, with professional wildlife

tracker, naturalist, educator and author, David Moskowitz. This class is a wildlife track and sign evaluation through CyberTracker North America. David's approach to this class is highly interactive, engaging participants in identification and interpretation of tracks and signs. Lots of time for questions and discussion is built in. This style is an excellent way to learn and investigate, with the chance to achieve a wildlife tracking certificate through CyberTracker North America. Saturday, Sept. 16 and Sunday, Sept 17 9am-5pm For more information visit wenatcheeriverinstitute.org.

Chumstick Wildfire Stewardship Coalition's highest goal is to change the social, environmental, and economic contexts in which we view fire by creating fire adapted landscapes, governments, businesses, and residents, all connected and collaborating to change the way we live and work in fire country. The next Bio Char program and business meeting will be Sept. 20, 2023, 6:00 pm at the Leavenworth Fire Station

The Leavenworth Lions Club

Breakfast in The Park on Saturday, September 23. Enjoy a hearty all-you-can-eat breakfast of pancakes, eggs, and sausage from 7 a.m.-11 a.m. in Lions Club Park.

The National Alliance on Mental Illness (NAMI)

NAMI Family to Family provides information about anxiety, depressive disorders, schizophrenia, bipolar disorders, and other conditions. Join a FREE 8-session series of classes for families and friends of someone with a mental health condition on Wednesday, October 11, from 9:45 a.m. to 12:15 p.m. at the Leavenworth

Nazarene church. Discussion topics include communication, problem-solving, treatment and recovery, and self-care. On To register, call Jacquie at (509) 679-8266 or email namedprograms@gmail.com

Cashmere

Debbie Dimitre at the Cashmere Community Church

Join PEO Chapter JF members for a journey back in time to meet suffragette Alice Paul as told by storyteller Debbie Dimitre on Saturday, September 23, at the Cashmere Community Church, 213 South Division St. Dessert, and coffee at 6 p.m. followed by the program at 7 p.m. Ticket price is \$15. Available at the door, or a Chapter JF member or contact peoleavenworth@nwi.net. This event is a fundraiser to provide scholarships to women.

Regional

Local Theater Seeks Young Talent for 'Jungle Book Kids' Auditions

Plain's Alpine Star Theater is looking for kids grades kindergarten through ninth to star in their November performance of Disney's "Jungle Book Kids." Auditions are Friday, Sept. 15, from 3:45 to 6 p.m. and Saturday, Sept. 16, from 10 a.m. to noon at 12565 Chapel Drive in Plain. Auditions are an open format, so come during either of the times listed. No preparation is needed. Registration is \$65 and includes a t-shirt and cast party and helps with production costs. Performances will be November 16-18 at Ponderosa Community Clubhouse. For more information, contact Kari Novikoff at alpinestartheater@gmail.com or 509-881-1152.

WARD MEDIA 'Bringing the community to your door' isn't just our slogan... It's our purpose THE LEAVENWORTH ECHO CASHMERE VALLEY RECORD

FINDING OUR BALANCE

PREVENT SLIPS, TRIPS & STUMBLES

SENIOR HEALTH FAIR 2023

JOIN US

September 20
9am - Noon

Cascade Medical Center
 817 Commercial St.
 Leavenworth, WA

FREE EVENT
 SPONSORED BY

Health Alliance NORTHWEST™

CASCADE MEDICAL
PARTNERS IN YOUR HEALTH

WENATCHEE VALLEY MEDICAL GROUP
Affiliated Physicians of Confluence Health

Confluence HEALTH

Aging & Adult CARE
Senior Care

NORTH CENTRAL EMERGENCY CARE COUNCIL
ADVOCACY & EDUCATION

- Balance Tests
- Blood Pressure Checks.
- Home Safety Assessments
- Vision Information
- Medical Equipment & Devices
- Medication Assessments & more

OBITUARY

Sandra (Sandy) Trummer

Sandra (Sandy) Trummer went to heaven unexpectedly on September 2, 2023, her 80th birthday. The greatest gift she received was meeting Jesus that day. She was greeted in Heaven by her Father Denzel Kincy, Mother Isabel Kincy, sister Jeanie Vinyard, and her nephew Larry Parranto Jr.

For the last 48 years, Sandy was able to view the beautiful mountains of Leavenworth

from her front windows. She loved those mountains and made countless memories there. Sandy also adored the ocean and would spend many vacations in Hawaii and Seaside, Oregon. Her ashes will be scattered in both places. One final wish she had was that she would be preceded in death by her beloved dogs, Grace and Goliath. Each of her sweet pups passed only months

before her. She loved deeply and all who knew her could feel it. Sandy was a very kind and loving soul, who was devoted to her family and remained a steadfast friend until the end. She will be missed tremendously.

A celebration of life will be held October 2, 2023 from 4-8 p.m. at the Leavenworth Ski Hill for all who knew and cared for her.



Donate Your Vehicle

Call (844) 889-8170 to donate your car, truck, boat, RV, and more today!

How it Works:

1. Contact Us
Call (844) 889-8170
2. Schedule Pickup
We'll pick up your vehicle for FREE - at a time and place convenient for you.
3. Receive Top Tax Deduction
You may qualify for a tax deduction.

- Support Veteran Nonprofits.
- Free Pickup & Towing.
- Top Tax Deduction.

Donate Your Vehicle Today
844-889-8170

While we appreciate every donation, in some cases, we find that we are unable to accept certain vehicles, watercraft, and/or recreational vehicles due to the prohibitive costs of acquisition. If you have any questions, please give us a call at (844) 889-8170.



Good Gravy

It's nice to know how to make sauces like white sauce, cheese sauce, and gravy.

I'll never forget the first time I actually considered gravy-making. I was seven, maybe eight years old, and Mom, now Grandma, was shopping for supplies and restocking the larders for winter a few towns away, leaving Dad, now Grandpa, in charge of cooking for a few days.

So, Dad cooked up some steaks for dinner. We always had wild meat. Dad was then and still is now a good hunter. After making the steaks, he wanted to make some gravy, but he didn't know how. The division of labor as he was growing up was first, his mother did all the cooking, and then, after marriage, his wife did all the cooking. We tried finding Mom's cookbook, but we looked in all the wrong places, so he asked me if I knew how to make gravy.

Looking at the fat in the bottom of that cast iron skillet, I remembered Mom pouring flour into the fat, so I told him

so. He poured flour into the fat in the skillet and stirred. It didn't look like gravy, so I suggested more flour. He added more flour.

And that's as far as we got: flour and oil in a mushy paste. I'd only paid attention to the first half of gravy making and didn't know to add liquid. We treated that oily mush like gray and piled it on our potatoes only to scrape it off and leave it on the edge of our plates to be fed to the dog.

Looking back, I'm sure my value for 'good' gravy comes from that experience.

I've since learned how to make white sauce, and Dad has learned how to cook for himself and his mate (everyone now and then, we all get sick and need someone else to make dinner).

I use the knowledge to make cheese sauce for macaroni, clam sauce for linguine, and mushroom sauce for casseroles. Plus, I use the thickening technique for making broth gravies juice sauces, canned cream soup substitutes, and sometimes tomato sauce for spaghetti or pizza if that's what I have to work with.

Flour Thickened Sauce

(Amounts will vary depending on personal preference.)

- Equal parts flour and oil/butter/fat
- Salt (optional)
- Liquid, preferably a liquid with flavor
- Herbs, spices, sugar (as needed)

Consider what is being made. Decide what sauce to make and how thick it will be. Measure the liquid. Calculate the amount of flour and oil/butter/fat to use (see below). Pull out a saucepan or a skillet.

1. Tablespoon each of oil/butter/fat and flour plus one cup of liquid will make a sauce that pours nicely onto pancakes and waffles (Fruit juice sauce).
2. Tablespoons each of oil/butter/fat and flour plus one cup of liquid will make a sauce that works well on mashed potatoes like meat gravy type sauces.
3. Tablespoons each of oil/butter/fat and flour plus one cup of liquid will make a sauce that works well for freshly boiled noodles that retain a residue of moisture from the boiling.

Once the calculations have been done, measure the liquid, then add any of the optional ingredients to the liquid and stir to incorporate, set aside. Turn heat on low under the pan, then add the oil/butter/fat and the flour and bring to a simmering bubble until the mixture is smooth; then start adding the liquid a little at a time, stirring constantly until all the liquid is added and the sauce has thickened.

If making cheese sauce, use milk as the liquid, add a pinch of dried mustard, then add 1/2 to 1 cup shredded cheese after the sauce has thickened, mix well, and stir into noodles.

Choices for liquids: meat or veggie broth, tomato juice, any fruit juice, or milk. Milk will curdle with prolonged contact with heat, so as soon as a milk sauce is your type of thick, remove it from the heat.

About the author: In 2000 Michele Priddy left the work force to become a stay-at-home mother and wife. Being a one-income family in today's society meant she had to learn to budget quickly. Food became a priority early because she wanted the children to have the best nutrition she could offer them even on a budget. She taught cooking classes at various churches in her community on "How to stretch the food dollar with simple ingredients". Michelle has put her kitchen strategies, stories and recipes in booklets, her church newsletter and in her hometown newspaper, The Goldendale Sentinel. We hope you will enjoy her strategies, stories, and recipes.
Michelle Priddy:
pridymichelle1@gmail.com



Kodiaks Scoreboard

FOOTBALL	
Sept 8:	Cascade 14, Tonasket 28, Loss
GIRLS SOCCER	
Sept. 2:	Cascade 2, Ephrata 5; Loss
Sept. 7:	Cascade 0, Cle Elum 1; Loss

Sports Schedule

FOOTBALL	
Sept 15:	Cascade vs. Brewster, Homecoming Game at 7 p.m.
GIRLS SOCCER	
Sept. 16:	Cascade vs. Yakima, Home at 12 p.m.
Sept. 19:	Cascade vs. Zillah, Away at 6 p.m.
CROSS COUNTRY	
Sept. 16:	Wenatchee Invitational, Walla Walla at 9:30 a.m.
Sept. 20:	Okanogan Invitational, Away at 5 p.m.
VOLLEYBALL	
Sept. 13:	Cascade vs. Okanogan, Away at 6:30 p.m.
Sept. 14:	Cascade vs. Yakima, Home at 5:15 p.m.
Sept. 19:	Cascade vs. Zillah, Away at 6:30 p.m.

GO KODIAKS

BECOME A KODIAK SPORTS SPONSOR THIS YEAR

Call 509-548-5286 to sign up.
We will make your ad at no cost.

OBITUARY & MEMORIAL POLICIES

Ward Media, LLC: Leavenworth Echo, Cashmere Valley Record, Lake Chelan Mirror, Quad City Herald. An Obituary is a way for family member(s) to commemorate a loved one's life and to notify the community of the passing of the loved one. Obituaries are also used for historical and ancestral data. Memorials are another way to let the community know about the life and memories of the person who has passed. A Memorial is different from an Obituary. An Obituary is usually current, while a Memorial can be written later. Obituaries and Memorials need to be typed and emailed as a Word Document. They can be placed in one or more papers - all publish weekly on Wednesday. Obituaries are priced by the number of words and include one color photo and go online at no extra charge. Memorials are priced per column inch. Please call for cost. *Payment is due at the time of placement. *Exception: Chapels, funeral homes who have an account, can be billed. There is no charge for a Death Notice - information is limited. Deadline is 4 p.m. on Friday - some exceptions may apply. Please call 509-548-5286 for more information Or email obits@ward.media

UPPER VALLEY CHURCH GUIDE

New to our area? On vacation? These churches welcome you!

TO PLACE INFORMATION IN THE CHURCH GUIDE CALL 509-548-5286

CASHMERE

CASHMERE BAPTIST CHURCH
103 Aplets Way • 509-782-2869
Sunday School, all ages, 9 a.m. Worship 10 a.m.
Bible Study, Wed., 6:30 p.m.
Pastor Bob Bauer
Find us on Facebook at Cashmere Baptist Church

CASHMERE PRESBYTERIAN CHURCH
303 Maple Street • 509-782-2431
Sunday Morning Worship 10:30 a.m.
Call for activities: Pastor Charles Clarke
www.cashmerepres.org

CASHMERE COMMUNITY CHURCH
213 S. Division • 509-782-3811
In-person Service, Sunday, 11 a.m. until further notice.
Pastor Lilia Felicitas-Malana
cashmerecommunitychurch@gmail.com

CHRIST CENTER
Sunday Worship Service at 10 am
Lead Pastor Steve Haney
5800 Kimber Rd., Cashmere
509-295-8006
christcentercashmere.com

GRACE LUTHERAN CHURCH
• 509-860-0736 • 401 Elberta Ave.,
Morning Prayer or Holy Eucharist.
Services, 10 a.m.
Pastor Rob Gohl

ST. JAMES EPISCOPAL CHURCH
• 509-860-0736 • 222 Cottage Ave.,
Morning Prayer or Holy Eucharist.
Services, 9:00 a.m.
Pastor Rob Gohl

DRYDEN

DRYDEN COMMUNITY CHURCH
Hwy 2 at Dryden Ave. • 509-782-2935
Sunday School 9:30 a.m.
• Worship 10:45 a.m.
Pastor Steve Bergland

MID-VALLEY BAPTIST CHURCH
8345 Stine Hill Rd. • 509-782-2616
Worship Service, 10 a.m.,
Sunday School, 9 a.m.
Pastor Mike Moore
www.midvalley baptist.org

LEAVENWORTH

CASCADE MOUNTAIN BIBLE CHURCH
Office: 509-548-4331
11025 Chumstick Hwy.
Please join us Sunday mornings
9 a.m., Sunday School
10:30 a.m., Worship Service

CORNERSTONE CHURCH
Leavenworth Grange Hall
621 Front St.
info@cornerstoneleavenworth.com
Sunday Worship - 10 a.m.

SEVENTH DAY ADVENTIST CHURCH
10600 Ski Hill Drive • 509-548-4345
Saturday Services • Bible Study 9:30 a.m.
Worship 11 a.m. • Fred Smith • 509-860-3997

SPIRIT LIFE CENTER
210 Benton Street • 509-548-7138
Sunday Worship 10 a.m., Prayer 6 p.m.
Wednesday Bible Study 6:30 p.m.
Pastor Russell Esparza

MONITOR

MONITOR UNITED METHODIST CHURCH
3799 Fairview Canyon • 509-782-2601
In-person service, Sunday, 9 a.m.
Pastor Lilia Felicitas-Malana

PESHASTIN

LIGHT IN THE VALLEY COMMUNITY CHURCH
8455 Main Street
Sunday Worship 10 a.m. • Pastor John Romine
www.lightinthevalley.org

NEW LIFE FOURSQUARE CHURCH
7591 Hwy. 97 • 509-548-4222
Sunday Worship, 10 a.m.
Pastors, Darryl and Mindy Wall
Email: newlifeleavenworth@gmail.com
FB page: newlifeleavenworth
www.newlifeleavenworth.com

PLAIN

PLAIN COMMUNITY CHURCH
Serving Our Valley Since 1941
12565 Chapel Dr. 509-763-3621
Looking for you at 10:30 this Sunday!
plaincommunitychurch.org
facebook.com/plaincommunitychurch
office@plaincommunitychurch.org

Commentary

The #3 Affordable Housing Whistle

By RHONA BARON
Contributor for Ward Media

The Leavenworth community cares about affordable housing. Based on the city's recent Urban Growth Area Expansion survey, 70% of respondents view affordable housing as a priority. At the same time, an equally strong majority prefer single-family neighborhoods, more parks, and maintaining Leavenworth's mountain town vibe.

A mixture of cooperation and conflict is washing over America's tourist towns as people of varying backgrounds, income levels, perspectives, and ages wade into the muddy waters to create more affordable and workforce housing. This column has argued that multi-perspective solutions are possible. But if we do not engage, city hall will continue to code us into a density-driven shape we don't recognize or desire.

Our small-town feeling will be lost for good.

Offering the final column in our three-part series, we invite you to explore the following solutions. It will take a village of diverse, cooperative folks to solve the challenges before us. And, although admittedly uncomfortable, there is no avoiding the need for the community to confront change...together.

If you are a business owner, how would you prefer to contribute to housing? If you are the Leavenworth Chamber or a community non-profit, when and how do you step up? Or maybe you work in town. What is your proposal for living affordably in the home you envision?

If you are a long-time resident, have you grappled with the need occurring around your little patch of heaven? To our wealthiest homeowners, what's your position? Are you a second homeowner whose property sits vacant most of

the year while our workforce struggles to find housing? Or do you own multiplex rentals, benefitting from their income? Where is your responsibility in our housing puzzle?

1. In a number of tourist towns, businesses (either jointly or singly) design, build, and pay for housing. Or business(es) secure employee housing from existing dwelling units. Examples include Ketchum, Idaho, and the Marson family here in Leavenworth.
2. In Big Sky, Montana, resort tax funding administered by the government along with a non-profit (Habitat For Humanity) and the local school district formed a partnership to create housing for teachers.
3. A campaign sponsored by a large ski area in the Aspen area offers attractive, fun incentives to homeowners with rental units, ADUs, and even extra bedrooms

to rent to employees for the busiest seasons.

4. Examples abound of partially or fully converted tourist multiplexes or hotels. Instead of housing visitors, the structures provide workforce housing rentals, as in Whitefish, Montana.
5. In Carbondale, Colorado, residents voted for funneling tax money from short-term rentals or lodging taxes toward affordable housing.
6. Within a five to fifteen-minute drive or bus ride from Leavenworth, the landscape flattens and offers developable land in Peshastin, Monitor, and Cashmere. Should Leavenworth workforce housing deliberately partner with and expand to these locations?
7. In 2017, a City of Leavenworth study recommended the following options: HUD

PBRA (Project-Based Rental Assistance), HUD SHOP (Self-Help Homeownership Opportunity Program), and HTF (National Housing Trust Fund), among others.

8. Leavenworth could be the first in WA to attempt affordable housing overlays where denser construction is allowed in neighborhoods if the builder is willing to commit to a percentage of those units being affordable.
9. A moratorium on allowing Leavenworth's many ADUs to be converted to B and B's could be imposed, tied to an incentive to rent ADUs to locals.
10. In Breckenridge, Colorado, the city is purchasing property, putting on deed restrictions that specify that the owner must work in town and may not convert the home to a short-term rental. The city



then flips the dwelling for 30% less than the purchase price.

As we all confront the future, we thank you for reading the Whistle in print and online at The Echo since September 2022. We appreciate receiving almost 14,000 visits to our website. But for now, it's time for me to say farewell as editor. Running for council position #4, I'm required to bow out as a columnist. I hope to visit with you soon in person. You can always reach the incomparable Whistle Team at LWhistle.com. Keep on Whistling. We hear you!

Thank you for participating in my 7th annual "Listening Tour"

After my election to the Senate seven years ago, I started an annual "listening tour" to help me hear directly from constituents on issues important to their communities. I recently completed this year's listening tour throughout the district. Hosting my discussions in communities each fall help prepare me for legislative sessions each winter. This year's listening tour included discussions on business, recreation, wildfire, healthcare, education, transportation issues and more. The tour also included

a preview of the upcoming legislative session, which begins in January.

As a result of recent redistricting, I divided this year's listening tour between the traditional areas of the 12th District and the new areas. The first portion of the tour was dedicated to Chelan County and Douglas County residents. The remaining tour was held in the King and Snohomish County portions of the district. Past listening tours have helped



By SENATOR
**BRAD
HAWKINS**
State
Senator, 12th
Legislative
District

connect me with issues important to many communities in North Central Washington. Many of these areas are no longer within the 12th District boundaries, which is why this year's stops included many of the new communities in the district.

The new 12th District boundaries now include East Wenatchee, Chelan County, and portions of Snohomish County and King County. The new communities include portions

of North Bend, Carnation, Sultan, and Monroe and many unincorporated King and Snohomish County residents. A major feature of the new 12th District is the Cascade Mountain Range, although the inclusion of the Cascade Mountains doesn't actually add much population to the district. I have worked hard in recent months to outreach to all communities in the district and have enjoyed learning about the issues in these new areas.

Recent ideas shared during past listening tours have turned into successful legislative action. A proposal

by Leavenworth officials to dispose of brush and yard clippings resulted in new law to help the community. A funding request for the Saddle Rock trail became a reality when later included in the budget. A biochar demonstration project to reduce wildfire risk was also funded as well as significant improvements to Wenatchee's Community Center used by Pinnacles Prep Charter School. A land purchase for the Wenatchee Valley YMCA was also recently supported. All ideas were discussed during past

listening tours.

During my recent listening tour, I also heard comments that helped prepare me to better represent you in Olympia. I hope you had the opportunity to participate in this year's tour. Whether you were able to participate or not, please know that my position exists to serve you. Please feel free to reach out to me and my office anytime through my website at senatorbradhawkins.org.

Brad Hawkins serves as State Senator for the 12th Legislative District.

Letter to the Editor

Our valley is a region unto itself, where we share stunning mountain vistas as well as plentiful, but at some point, limited resources. The Wenatchee River and Highway 2 form the corridor that runs the length of our region, linking it together in many ways.

People have made and continue to make choices as to

jobs and economic opportunities, sports and recreation, and overall quality of life. For these reasons, many folks continue to come to our valley to live.

In real estate, location is everything; most importantly, location determines land values. Construction costs and materials are fairly standard although ever increasing. It is

the price of land itself that has a major impact on the final selling price. Reflecting its desirability, Leavenworth's land prices are the highest in the entire region. This makes Leavenworth a difficult location to plan for and build affordable housing.

We in Leavenworth have been trying to solve the affordable housing issue all by ourselves, with little success. Our mayor campaigned and ran on the popular promise of providing

affordable housing. During his 4-year term, he has persuaded our city Council to approve numerous high-density zoning code changes. As a result, several new dense housing developments have been built according to these codes. But their selling prices are in the millions! So despite his many repeated promises he has been unable to accomplish one single affordable unit being built. That's how difficult it is to build

affordable housing in a location with extremely high land values.

What this means is that no one town can provide the answer to a regional problem. We need to widen our perspective and find regional solutions and locations for affordable housing that have lower land values. Elmer Larsen's recent letter lays this out clearly. He proposes that the upper valley communities (Leavenworth, Cashmere, Dryden, Peshastin

and the County) work together to build affordable housing near the middle of our region. By pooling our resources, including grants and other funding, and enhancing public transportation options, we can solve these housing needs. He suggests Dryden or Peshastin as suitable locations. I concur.

ANN CROSBY
Leavenworth

The Vital Lifeline: Why Supporting Local Journalism Matters

In an age dominated by headlines from around the world and a seemingly endless stream of information at our fingertips, it's easy to overlook the profound impact local journalism has on our lives and communities. Today, I want to remind you why it's crucial to support local journalism, not just as a publisher but as an engaged citizen deeply committed to the well-being of our society.



From the
Publisher
**TERRY
WARD**

compelling reasons why supporting local journalism is more important now than ever:

Accountability and Transparency: Local journalism holds those in power accountable. It serves as a watchdog over local governments, ensuring they remain transparent and answerable to the people they serve. Without the diligent reporting of local journalists, corruption and mismanagement can thrive unchecked.

Community Connection: Local journalism strengthens the bonds within our communities. It tells the stories of our friends and neighbors, celebrates our successes, and addresses

our challenges. It provides a platform for voices that might otherwise go unheard.

Timely Information: In times of crisis or emergency, local journalism is often the quickest source of accurate information. Whether it's a natural disaster, a public health crisis, or a community event, local journalists are on the frontlines, delivering real-time updates to keep us informed and safe.

Economic Impact: Supporting local journalism means supporting local businesses. Small businesses rely on local news outlets to connect with customers and advertise their services. When local journalism thrives, so does the local economy.

Education and Awareness: Local journalism educates us about issues that affect our lives, from school

board decisions to zoning changes. It empowers us to make informed choices and actively participate in our communities.

Diverse Perspectives: Local journalists understand the nuances of our communities and are more likely to provide a balanced and nuanced view of local issues. This diversity of perspectives is crucial for a healthy democracy.

Quality of Life: A vibrant local journalism ecosystem enhances our quality of life. It fosters civic engagement, encourages dialogue, and inspires positive change. It's not just about what's happening; it's about how we can collectively make our communities better.

However, the landscape of journalism has been shifting dramatically. Local

newsrooms are struggling to survive in an era where advertising dollars increasingly flow to tech giants, and news consumption habits are evolving. As a result, many local news outlets are forced to cut staff or close their doors, leaving communities without a critical source of information.

So, what can we do to support local journalism? Here are a few steps:

Subscribe: Consider subscribing to your local newspaper. Your subscription helps fund the journalists who work tirelessly to keep you informed.

Engage and Share: Read, share, and engage with local news stories on social media. Spread the word about the importance of local journalism to your friends and family.

Advertise Locally: If

you're a business owner, consider advertising in local media. It's a win-win, as you promote your business while supporting journalism.

Advocate: Advocate for policies that support local journalism, such as tax incentives for local news outlets.

Local journalism is an invaluable pillar of our communities. It's the voice that tells our stories, uncovers the truth, and empowers us to make informed decisions. By supporting local journalism, we invest in the health and well-being of our communities and safeguard the principles of democracy. Let us come together to ensure that this vital lifeline remains strong and resilient for future generations.

Thank you for your unwavering support.

Service League

Continued from page A1

"Last year we had to rent a space, in the past, that was donated. Putting the money upfront to rent a space is more stressful. The money will help

so that we can put on our events and then at the end of the year turn around and award grants and scholarships."

Other events include a prom dress giveaway, Touch-A-Truck, and diaper drives. The group also collects small

toiletries throughout the year and distributes them to school districts for students who need them, as well as members volunteering to help other nonprofits, Epoch said.

The league is always looking for new members, Epoch said.

The Women's Service League is a great way to meet people and be involved in your community, Mendoza said.

Throughout 2023, Liberty Mutual and Safeco Insurance will select up to 37 independent agents nationwide for a Make

More Happen Award, donating up to \$370,000 to the nonprofits they support. Agencies became eligible for the award by submitting an application and photos demonstrating their commitment to a specific nonprofit.

"When a company or corporation helps support a community like this, it feels like a validation of the work and impact you are making," Mendoza said.

Quinn Propst: 509-731-3590 or quinn@ward.media

For the latest local news and advertising see the Ward Media websites



leavenworthecho.com

qcherald.com

cashmerevalleyrecord.com

lakechelanmirror.com



Place your ad online at NCWMARKET.COM or call 509-548-5286 - Leavenworth Echo/Cashmere Valley Record 509-682-2213 - Lake Chelan Mirror • 509-689-2507 - Quad City Herald

CLASSIFIEDS

PUBLISHER'S NOTICE
All real estate advertising in this newspaper is subject to the Fair Housing Act, which makes it illegal to advertise "any preference, limitation or discrimination based on race, color, religion, sex, handicap, familial status or national origin, or an intention to make any such preference, limitation or discrimination." This newspaper will not knowingly accept any advertising for real estate that is in violation of the law. To complain of discrimination call HUD at 1-800-669-9777. The number for hearing impaired is 1-800-927-9275.

CORRECTIONS: Ward Media LLC shall be responsible for corrections to advertisements on the first publication only. The advertiser will be responsible for the corrections made thereafter. Ward Media LLC shall not be responsible for slight changes or typographical errors that do not lessen the value of the advertisement. Ward Media LLC's liability for other errors or omissions in connection with an advertisement is strictly limited to the publication of the advertisements in any subsequent issue. No monetary refunds will be given. For more information call 509-548-5286.



Administrative

Puzzle Solution

8	9	1	7	5	4	2	6	3
4	3	6	2	9	1	5	7	8
2	7	5	6	8	3	1	4	9
9	6	8	3	1	7	4	5	2
7	1	3	4	2	5	8	9	6
5	4	2	8	6	9	7	3	1
3	2	4	9	7	8	6	1	5
1	8	7	5	3	6	9	2	4
6	5	9	1	4	2	3	8	7

Advertise in the Classifieds
509-548-5286

Announcements

Lost & Found

LOST & FOUND ITEMS can be placed in our Local Newspapers and Online at NCWMARKET.COM for **ONE week for FREE.** Limit 30 words. A small fee will be charged for over 30 words and pictures or other extras.

Leavenworth/Cashmere 509-548-5286 or email classifieds@ward.media or **Lake Chelan Mirror** 509-682-2213 or **Quad City Herald** 509-689-2507 or email classifieds@ward.media

Deadline Noon on Friday for the next week's papers



Happy Ads

Do you have a **SPECIAL EVENT COMING UP? HAPPY BIRTHDAY CONGRATULATIONS! WILL YOU MARRY ME? HAPPY ANNIVERSARY**

Add unlimited text and pictures, video for your online ad at www.NCWMarket.com

Print ads are limited to 30 words, over 30 words, or extra enhancements like bold words or border will be a minimal extra charge. Ads will be placed in the following Wednesday edition of the papers.

It is easy just Register and pay on our secure site 24/7 Or call 509-682-2213 to place ad or have questions.

Lake Chelan Mirror or Quad City Herald or email classifieds@ward.media For **The Leavenworth Echo or Cashmere Valley Record** Call 509-548-5286 or email classifieds@ward.media

General Interest

PREPARE FOR POWER OUTAGES today with a GENERAC home standby generator. \$0 money down + low monthly payment options. Request a FREE Quote. Call now before the next power outage: 1-888-674-7053.

ADVERTISE STATEWIDE with a \$325 classified listing or \$1600 for a display ad. Call this newspaper or 360-344-2938 for details.

DONATE YOUR CAR TO CHARITY. Receive maximum value of write off for your taxes. Running or not! All conditions accepted. Free pickup. Call for details, 855-635-4229.

ELIMINATE GUTTER CLEANING FOREVER! LeafFilter, the most advanced debris-blocking gutter protection. Schedule a FREE LeafFilter estimate today. 20% off Entire Purchase. 10% Senior & amp; Military Discounts. Call 1-888-360-1582.



Looking for a home for your Furry friend?

Try the pet section on NCWMarket.com

General Interest

BREWSTER SCHOOL DISTRICT
P.O. BOX 97,
BREWSTER, WA 98812
• 509-689-3418
Child Find Notice

The process of locating and evaluating children with developmental delays or other disabilities is referred to as "Child Find." The Individuals with Disabilities Education Act (IDEA) requires all school districts to locate, evaluate, and provide services to individuals birth to age 21 years old who may have a disability.

If you suspect your child or if you know of a child that may have a developmental delay or disability, please contact the Brewster School District Special Education Department at 509-689-2581.

The Brewster School District offers free developmental screenings. These screenings are designed to provide a brief assessment of the communication, adaptive, cognitive, social-emotional, and motor development of the child. Developmental screening appointments are available. Please contact the Brewster School District Special Education Department at 509-689-2581 to schedule an appointment.

Aviso del Proceso de Child Find

El proceso de localizar y evaluar a los niños con retrasos en el desarrollo u otras discapacidades se conoce como "Child Find". La Ley de Educación para Personas con Discapacidades (IDEA) requiere que todos los distritos escolares ubiquen, evalúen y brinden servicios a personas desde el nacimiento hasta los 21 años que puedan tener una discapacidad. Si sospecha de su hijo o si sabe de un niño que puede tener un retraso en el desarrollo o una discapacidad, comuníquese con el Departamento de Educación Especial del Distrito Escolar de Brewster al 509-689-2581. El Distrito Escolar de Brewster ofrece evaluaciones de desarrollo gratuitas. Estas evaluaciones están diseñadas para proporcionar una evaluación breve del desarrollo comunicativo, adaptativo, cognitivo, socioemocional y motor del niño. Las citas de evaluación del desarrollo están disponibles. Comuníquese con el Departamento de Educación Especial del Distrito Escolar de Brewster al 509-689-2581 para programar una cita

Windermere REAL ESTATE
Leavenworth/Lake Wenatchee Specialists

Looking for real estate in the Upper Valley? Give us a call today!

Robyn Bodajla - 617-462-3402
Momi Palmieri - 509-433-2211
Geordie Romer - 509-679-8958
Allyson Romer - 509-630-9898

See all available properties at windermereleavenworth.com

Employment

Help Wanted

NEEDED
A pianist /accompanist for the Leavenworth Community United Methodist Church. Approximate hours on Sundays would be from 9:30-11:00 a.m. Our services include a prelude and postlude, two or three hymns and traditional service pieces (Doxology, etc.). Please leave a message at the church: 509.548.5619 and we will contact you.



School District is seeking qualified applicants for the following positions:

- Cascade High School Para Educator/Food Service Cashier 7.5 hours
- Cascade High School Assistant Basketball Coach

Fast Track application process and information can be found on our website at www.cascadesed.org EOE

Looking for a great local employee?

It is easy to place your ad online 24/7 at www.NCWMarket.com Register and pay on our secure site.

Want Print Only for The Lake Chelan Mirror Quad City Herald Brewster Call 509-682-2213 or email classifieds@ward.media OR

Leavenworth Echo Cashmere Record 509-548-5286 or send email to classifieds@ward.media

Deadline is Friday by Noon for the following Wednesday issues of all newspapers



School District is seeking qualified applicants for the following position:

Building Cook 7 hrs.

Fast Track application process and information can be found on our website at www.cascadesed.org EOE

Help Wanted



School District is seeking qualified applicants for the following positions:

- District Warehouse/Delivery/Maintenance/Grounds Keeper 8 hours
- Icicle River Middle School Cook 2.5 hours

Fast Track application process and information can be found on our website at www.cascadesed.org EOE



WSU is hiring a full-time SNAP-Ed Program Assistant.

This position is with the WSU Extension Food Sense Nutrition Education program in Okanogan County. Bachelor's degree in nutrition or related field or equivalent education and work experience is required.

To apply, visit <https://wsu.edu/jobs/> and search position number R-10091.

For questions, call Margaret Viebrock, WSU Chelan-Douglas County Director at 509-745-8531. Applications are due September 8. WSU is an EO/AA Educator and Employer.

For Sale

Antiques & Collectibles

Get cold hard CASH for your Antiques and Collectibles by placing them in our classifieds.

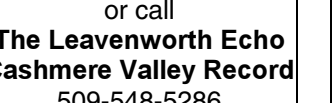
Place your ad with pictures online 24/7 at www.NCWMarket.com

Register and pay on our secure site.

Want Print Only? Call **Lake Chelan Mirror Quad City Herald** 509-682-2213 or email classifieds@ward.media or call

The Leavenworth Echo Cashmere Valley Record 509-548-5286 classifieds@ward.media

Deadline: Noon on Friday for all papers.



Garage & Yard Sale

CLEAR SOME SPACE WITH A



Fill your pockets with CASH \$\$ Let others know what items you are selling!

Go online now to Place your ad 24/7 at www.NCWMarket.com

Print only? **Deadline Friday at Noon for all papers**

Lake Chelan Mirror Quad City Herald Call: 509-682-2213

Leavenworth Cashmere Call: 509-548-5286 Email: classifieds@ward.media

Your ad will appear online and in the newspapers for one low price!

Vehicles

Boats & Trailers



2005 Bayliner Model 212CU 150 HP Inboard/Outboard with trailer. Original owners. Immaculate condition. Less than 100 hours on engine. Never been in salt water. Bimini top, heater, stereo by Car Toys, detachable table, swim step, several life jackets, canvas bumpers, portable toilet (never used - it's still brand new), all original paperwork. Too good to believe. This is truly like a brand new boat. It's a must see! Engine completely cleaned and serviced in May of this year, 2 new batteries, tabs on thru June 2024. Lots of time left this year to enjoy Lake Chelan. Boat is ready and waiting right here in Chelan to go out on the lake. \$24,500 206-227-4462

Campers, Trailers & RVs

For Sale 8' x 10' Utility Trailer \$550 8' Livingston Boat \$200 Call for details 509-668-1940 East Wenatchee

Washington Outdoors Report It's Crappie Time!

By JOHN KRUSE
Special to Ward Media

Fun to catch and tasty to eat, crappie offers an excellent opportunity for anglers in the late summer and early fall. There are two species of crappie found in Washington State: the white and black crappie. Of the two, the black crappie is more commonly found in the Evergreen State.

At this time of year, crappie bite readily, and there are several ways to catch them. Sometimes, it's as easy as tipping a small jig with a worm and slowly reeling it three feet behind a bobber. Other times, it's not that easy.

One person who targets these fish for a living is Brad Chappell, a full-time guide out of Central Mississippi and the man behind the Crappie Connection channel on YouTube. He has five specific methods he recommends to catch crappie right now anywhere they are found in the country, including:

1. Casting to brush piles and retrieving a very small jig (1/16th or 1/32nd ounce in size). Chappell recommends using a lure called a Bobby Garland Itty Bit jig.
2. Fish these same small jigs under a slip bobber in front of crappie to trigger strikes.
3. Troll a crankbait (like a 3-inch Bandit 300) over suspended schools of crappie to trigger a reactive bite.
4. Vertically jig two 1/16th ounce jigs from the boat for deep water crappie.
5. Power Troll a 1/8th or 1/4 ounce jig three feet below a two-ounce lead sinker anywhere from 1.2 to 2 miles per hour. You can combine this technique by trolling another rod with a crank bait.

When people think of crappie, many think of them being anywhere from seven to eleven inches in size, but they get a lot bigger than that. Washington State's record white crappie was caught out of Burbank Slough in 1988. The angler who caught the 2.8-pound fish was Don Benson. The record black crappie has stood the test of time; a 4.5-pound monster panfish hauled



Photo Courtesy of Pete Fisher

Pete Fisher shows off his catch of quality crappie at Potholes Reservoir.

out of Lake Washington by John Smart back in 1956.

One body of water known for big crappie in Eastern Washington is Potholes Reservoir. Crappies must be at least nine inches long to keep here, and 15-inch crappie weighing well over a pound are not uncommon. Pete Fisher at MarDon Resort loves to go after these panfish and has specific advice for anglers targeting crappie this time of year.

Pete suggests trolling a #5 Berkley Flicker Shad to locate a school of crappie. Then, anchor up and use a slip bobber set to a depth matching the school's top. Try Bobby Garland Baby Shads or DS Fry on a 1/32nd-ounce Moon-Eyed jig under that slip bobber for success.

By the way, one great place to catch these fish without a boat is right off the docks at

MarDon Resort. Normally, you have to be a paying guest to fish at the marina, but from September 15 through the morning of September 17, the annual MarDon Marathon Dock Tournament takes place there. For a \$40 entry fee, you can fish as much as you want for crappie (and nine other species of fish) off the docks, and the anglers reeling in the heaviest two fish from any species (including crappie) will

walk away with prize money. You can register for the event at the resort office or through the MarDon Resort website. <https://mardonresort.com/events.html>

Looking for other places to fish for crappie? See the table below for some suggestions.

John Kruse - www.northwesternoutdoors.com and www.americaoutdoorsradio.com

15 CRAPPIE LAKES IN EASTERN WASHINGTON:

1	Sprague Lake (Adams/Lincoln County)	9	Spokane/Long Lake (Stevens County)
2	Moses Lake (Grant County)	10	Eloika Lake (Spokane County)
3	Banks Lake (Grant County)	11	Rock Lake (Whitman County)
4	Evergreen Reservoir (Grant County)	12	Leader Lake (Okanogan County)
5	Roses Lake (Chelan County)	13	I-82 Ponds (Yakima County)
6	Antilon Lake (Chelan County)	14	Horsethief Lake (Klickitat County)
7	Coffeepot Lake (Lincoln County)	15	Lake Roosevelt (multiple counties)
8	Box Canyon Reservoir (Pend Oreille County)		

Chelan County Sheriff's Report

This report is compiled from records provided by the Chelan County Sheriff's Office and RiverCom. The publisher cannot certify the complete accuracy of the information provided.



September 1

- 11:45 Alarm, 20628 Miracle Mile, Lake Wenatchee
- 13:37 Animal Problem, 8900 block Merry Canyon Rd.
- 13:49 Animal Problem, Central Ave. and Evans St.
- 15:54 Injury Accident, 8300 block Main St., Peshastin
- 15:56 Traffic Offense, Chumstick Hwy. and US Hwy. 2
- 17:15 Non-injury Accident, 935 Front St., Icicle Brewing
- 17:29 Property, Snow Lakes Trailhead
- 17:46 Animal Problem, 1127 Front St.
- 19:07 Assault, 25205 Saddle St., Plain
- 19:32 Welfare Check, Colchuck Lake trail
- 19:53 Welfare Check, 9800 block E. Leavenworth Rd.
- 22:36 Agency Assist, Fish Lake run bridge, Lake Wenatchee

September 2

- 15:13 Animal Problem, Front and 10th Streets
- 16:32 Non-injury Accident, 990 US Hwy. 2 Park n' Ride
- 16:39 Suspicious Circumstance, 3017 Memory Ln., Lake Wenatchee
- 16:46 Attempt to Locate/ Contact, 210 Division St.
- 18:53 Traffic Offense, Beaver Valley Rd. MP 13, Plain
- 20:28 Attempt to Locate/ Contact, Colchuck Lake trail
- 21:13 Trespassing, 894 US Hwy. 2
- 22:01 Weapons Violation, 310 Whitman St.
- 22:17 Civil Dispute, 3664 Allen Ln., Peshastin
- 23:09 Noise Complaint, 10190 Chumstick Hwy.

September 3

- 00:33 Noise Complaint, 8950 E. Leavenworth Rd.

September 1

- 00:42 DUI Arrest, US Hwy. 2 MP 100
- 00:43 Suicide Threat, 185 US Hwy. 2, Fairbridge Inn
- 03:39 Suspicious Circumstance, 9880 Mountain Home Rd.
- 07:08 Agency Assist, 9820 Eagle Creek Rd.
- 10:42 Theft, 320 Park Ave., Mountain Meadows
- 13:09 Agency Assist, Chiwawa Loop and Chiwawa River Roads, Lake Wenatchee
- 13:10 Parking/ Abandoned Vehicle, 198 Commercial St.
- 13:22 Weapons Violation, Derby Canyon Rd. MP 2, Peshastin
- 13:26 911-call, 590 US Hwy. 2, Enzian Motor Inn
- 13:59 Drugs, 18226 Chumstick Hwy.
- 15:37 Welfare Check, SR 207 and Beaver Valley Rd., Lake Wenatchee
- 17:04 Off-road Vehicle, Chiwawa River Rd. and FS 6200, Lake Wenatchee
- 18:34 Diversion, 116 River Bend Dr., Safeway
- 21:53 Attempt to Locate/ Contact, Snow Lakes trailhead
- 22:10 Noise Complaint, 3652 Allen Ln., Peshastin
- 22:19 Public Assist, 13961 US Hwy. 2, Swiftwater

September 4

- 01:00 Traffic Offense, 11015 Titus Rd.
- 09:36 Property, Snow Lakes trailhead
- 10:46 Animal Problem, 22500 block Alpine Hills Rd., Lake Wenatchee
- 11:55 Agency Assist, Beehive Reservoir boat launch
- 11:59 Property, Snow Lakes trailhead
- 13:47 Theft, 707 US Hwy. 2, Whistlepunk
- 15:03 Non-injury Accident, Commercial and Division

September 1

- 00:27 Agency Assist, 116 West St.
- 06:50 Trespassing, 116 River Bend Dr., Safeway
- 11:26 Disturbance, 116 River Bend Dr., Safeway
- 11:49 Suspicious Circumstance, 12776 Wheeler St.
- 16:18 Court Order Violation, 1214 Commercial St.
- 16:43 Property, 1250 US Hwy. 2, McDonald's
- 18:36 Suspicious Circumstance, 320 Park Ave., Mountain Meadows
- 19:47 Attempt to Locate/ Contact, Colchuck Lake trail
- 20:00 Traffic Offense, US Hwy. 2 MP 100
- 21:07 Non-injury Accident, 9th and Front Streets
- 22:49 Trespassing, Leavenworth Ski Hill
- 23:38 Welfare Check, 100 W. Commercial St.
- 23:56 Extra Patrol, Maple St. and Ski Hill Dr.

September 5

- 07:51 Traffic Offense, Chumstick Hwy. MP 6
- 08:55 Suspicious Circumstance, 14460 US Hwy. 2, Lake Wenatchee
- 10:07 Public Assist, Leavenworth area
- 10:16 Parking/ Abandoned Vehicle, 198 Commercial St.
- 10:50 Burglary, 8333 River View Rd., Peshastin
- 11:26 Theft, 1329 US Hwy. 2, Dan's Food Market
- 13:15 Juvenile Problem, 10144 Main St., Peshastin
- 14:18 Welfare Check, Ski Hill Dr. and US Hwy. 2
- 14:32 Suspicious Circumstance, 1329 US Hwy. 2, Dan's Food Market
- 15:03 Burglary, Coles Corner area
- 15:33 Non-injury Accident, 0 block Chumstick Hwy.
- 16:40 Agency Assist, 22744 Lake Wenatchee Hwy., Lake Wenatchee
- 18:41 Trespassing, US Hwy. 2 MP 72, Lake Wenatchee
- 19:49 Diversion, Prospect and Mine Streets
- 20:29 Trespassing, 261 Mine St.
- 22:03 Alarm, 11777 US Hwy. 2, Bavarian Village Veterinarian
- 23:27 Non-injury Accident, 817 Commercial St.

September 6

- 00:10 Attempt to Locate/ Contact, Snow Lakes trailhead

00:27 Agency Assist, 116 West St.

- 06:50 Trespassing, 116 River Bend Dr., Safeway
- 11:26 Disturbance, 116 River Bend Dr., Safeway
- 11:49 Suspicious Circumstance, 12776 Wheeler St.
- 16:18 Court Order Violation, 1214 Commercial St.
- 16:43 Property, 1250 US Hwy. 2, McDonald's
- 18:36 Suspicious Circumstance, 320 Park Ave., Mountain Meadows
- 19:47 Attempt to Locate/ Contact, Colchuck Lake trail
- 20:00 Traffic Offense, US Hwy. 2 MP 100
- 21:07 Non-injury Accident, 9th and Front Streets
- 22:49 Trespassing, Leavenworth Ski Hill
- 23:38 Welfare Check, 100 W. Commercial St.
- 23:56 Extra Patrol, Maple St. and Ski Hill Dr.

September 7

- 03:50 Suspicious Circumstance, 921 Front St., King Ludwig's
- 04:05 Agency Assist, US Hwy. 2 MP 99
- 05:33 Welfare Check, E. Leavenworth Rd. and US Hwy. 2
- 08:16 Traffic Offense, Chumstick Hwy. MP 7
- 09:49 Hazard, US Hwy. 2 and Ski Hill Dr.
- 10:09 Property, 1010 Main St., Barn Beach
- 10:33 Trespassing, 1117 Front St., Wanderlust
- 11:17 Suspicious Circumstance, 8333 River View Rd., Peshastin
- 12:53 Diversion, Mill St. and US Hwy. 2
- 13:36 Welfare Check, Benton St. and Ski Hill Dr.
- 14:30 Property, 12790 Fish Hatchery Rd.
- 17:07 Traffic Offense, Chumstick Hwy. MP 10
- 17:48 Suspicious Circumstance, 22744 Lake Wenatchee Hwy., Lake Wenatchee
- 22:13 Traffic Offense, 11015 Titus Rd.

BUSINESS & SERVICE Directory

Add your business or service to this directory: 509-548-5286

DRILLING

Tumwater Drilling and Pump Inc.

"Water Treatment Systems Built to Your Individual Problem"

Free Water Analysis/Estimates

Conveniently located on Hwy 2 across from the Big Y Cafe in Dryden @ 9290 Hwy 2

Tumwater Drilling & Pump, Inc.

509-548-5361

www.tumwaterdrilling.com • email info@tumwaterdrilling.com

WATER SOFTENERS, IRON FILTERS, CONDITIONERS, UV FILTERS, REVERSE OSMOSIS, SULFUR, WHOLE HOUSE FILTERS, PREVENTATIVE MAINTENANCE, SERVICE, SALT SALES

EXCAVATION

Complete Excavating Service

Power & Water Systems
Dump Truck & Dozer
Drainfield Repair
Free Estimates
Septic Systems
Road Grading

Upper Valley EXCAVATING

(509) 548-3489
Leavenworth, WA

Licensed - Bonded - Insured

STORAGE

Have spare room in your facility? Advertise on NCWMarket.com

STUMP REMOVAL

Quick 'n Easy Residential Stump Removal

STUMPS UNLIMITED

10817 North Road, Leavenworth • (509) 548-8222
Kim & Rosalie Kozelisky
Licensed, Bonded, Insured • Cont. #UPPERVE200PI

Your local news is just a mouse-click away.

THE LEAVENWORTH ECHO

www.leavenworthecho.com

Community Cupboard
A Program Of Upper Valley MEND

219-14th St.

Please help us meet our needs by donating the following items:

- Cereal • Juice • Canned Fruit • Cooking Oil • Eggs • Meats • Chili • Soups

Open: Monday through Saturday 11 a.m. - 5 p.m.
509-548-6727

211-14th St.

Das Thrift House

Open: Monday-Sunday, 10:30 am-5 p.m.
Kindly bring donations to our sorting center.
509-888-9990

This announcement sponsored by The Leavenworth Echo