

The Silsbee Bee

The only newspaper of record in Hardin County since 1917.



Silsbee Lady Tigers struggle
See Section 2

silsbeebee.com

Wednesday, January 28, 2015

Vol. 99, No. 5 • 50¢

THE COTTAGE

50 years later, the once dance hall and bar continues to serve Southeast Texas as the oldest business in the area.

By Meagan Moore and Danny Reneau

The Cottage is decadent of an era in Silsbee when liquor stores, beer joints and dance halls were all clustered on the Old Evadale Highway.

HISTORY

- Opened as Frank's Place, 1937
- Remodeled to include restaurant, 1946
- Fire destroys dance hall, 1963
- Establishment re-opens as The Cottage, 1965

Jasper County, in those days, was a dry county, and the local hot spots of Silsbee were situated as people crossed the river, and entered Hardin County. From Silsbee, people would first drive past old establishments that included: The Blue and White Inn, the Hurricane Club, Hill Top, Molders Place by Ellers, Edgar Browns, Richards Liquor Store, Marvin and Marie's, Schultz and Walkers, Mrs. Hooks Liquor Store and then on to Frank Arnold's Place.

There were probably others but one of the original founders of The Cottage, Flo Arnold, indicated that at this stage, they have faded from her mind.

In 1937, Frank Arnold established his dance hall, and liquor store. The family's home was connected to the liquor store.

Flo says Frank's dad, who she only refers to as Mr. Arnold, taught her how to act and how to treat others at the dance hall.

According to Flo, there was seldom trouble in the establishment that served food and allowed customers to take their own bottle of liquor.

The place then went under remodeling in 1946, which was shortly before Flo went to work there. She was a tiny 18-year old who never drank alcohol and had never been in a place like that.

Arnold taught her that "what happens in Frank's place, stays in Frank's Place."



Photo by Meagan Moore/Silsbee Bee

Flo Arnold and her daughter Frankie, continue to run the iconic eatery, The Cottage, north of Silsbee on Old Evadale Highway. The restaurant is celebrating 50 years in business.

She says it was a hot spot for out of town people from all over.

She soon found out that if she spoke to them, and

See COTTAGE on PG. 6, SEC. 1



An oil painting of the original Frank's Place cafe and club, still hangs in The Cottage restaurant. The business opened its doors in 1937, originally as a dance hall and liquor store.

Lumberton

Foul play ruled out in shooting

Lumberton woman remains in stable condition.

A 40-year-old Lumberton woman was found with a gunshot wound after Hardin County Sheriff's authorities were dispatched to a home located at 5525 West Chase Loop on Friday.

According to Hardin County Sheriff Ed Cain, the call was received around 9:23 a.m. from a woman who told dispatchers she had been shot.

Hardin County authorities and Lumberton police found the woman lying on the floor with a single gunshot wound to the left side of her chest.

The woman, later identified as Mary Sampson, was transported to St. Elizabeth Hospital in Beaumont by Lumberton EMS.

The incident remains under investigation, however Cain reported that foul play had been ruled out.

"The neighborhood should not have anything to be alarmed about," Cain said.

Sampons is listed in stable condition at this time.



The neighborhood should not have anything to be alarmed about.

Ed Cain
Sheriff

Evadale



An aerial view of MeadWestvaco paper mill in Evadale.

MeadWestvaco merger creates giant

Still no word on whether jobs will be affected in plants at Evadale and Silsbee.

By Daniel Elizondo
editor@silsbeebee.com

Packaging leaders MeadWestvaco (MWV) and Rock-Tenn agreed to merge on Monday, creating a leading global provider of consumer and corrugated packaging company now worth \$16 billion.

The announcement came unexpectedly by some officials of MWV plant in

Evadale.

Officials of MWV declined to comment on whether jobs would be cut, particularly at the mill in Evadale and the facility in Silsbee.

"Integration planning will begin immediately," MWV director of communications Tucker McNeil said in an

See MILL on PG. 5, SEC. 1

Sour Lake

Good wine, good friends

Lobbying in Austin by Shawn Bruno results in plentiful raisin and berry wine business in Hardin County.

By Daniel Elizondo
editor@silsbeebee.com

Set back in the countryside of Sour Lake, a quaint winery with

BRUNO & GEORGE WINERY

- Located at 400 Messina in Sour Lake.
- Tastings can be scheduled at 409-963-8235
- www.brunoandgeorge.com

a wine tasting bar could be found complete with the ambience of Tony Bennett and Frank Sinatra playing in the background.

Port Arthur native Shawn Bruno is quite proud of his small metropolis found in Hardin County and he should be.

After a year of lobbying with the Texas Legislature, Bruno is happy to say the business he and his wife, Misha run, has become a jewel in Texas by many wine lovers.

Bruno & George Winery in

Sour Lake, has been in business for 15 years, and the popularity of its products are growing at a tremendous rate, thanks to the mind of Bruno.

"I didn't think it would bloom this fast," Bruno said. "A lot of people just want a dry red or they want a dry white. My wines are for all the other people that don't want or need that. These berry wines have a charm of their own."

Bruno came up with the idea to

See BRUNO on PG. 5, SEC. 1



Photo by Daniel Elizondo/Silsbee Bee

Shawn Bruno shares his concoctions with friends Lucky Ott (far left) and Billy Tomlinson (right) during a tasting. Bruno and his wife, Misha, have perfected 11 wines that are made at the Bruno & George Winery in Sour Lake.



Weekend Weather

FRI.	SAT.	SUN.
59 High 45 Low	58 High 46 Low	54 High 39 Low

Bible Wisdoms
Don't love money. Be satisfied with [your] present circumstances.
-Hebrews 13:5



www.facebook.com/silsbeebee



www.twitter.com/silsbeebee

©Silsbee Bee 2014
404 Hwy. 96 South
P.O. Box 547
Silsbee, Texas 77656

Main number: 409-385-5278
Fax number: 409-385-5270
News: editor@silsbeebee.com
Advertising: advertising@silsbeebee.com

Convention draws inspiration in many ways

This past weekend, Daniel, his wife JJ, and Jan and I attended the Texas Press Assoc. Mid-Winter Convention in Galveston.

You hate to take the time and spend the money to attend

those conventions, but you have to.

My first business partner taught me early in my career, that it is a great place to learn new skills, get ideas for generating revenue, improving

production and also being inspired to write better, and more thought provoking stories.

A few years ago, I sat at a table with a group of publishers and editors. One of them

happened to be from Nebraska, and had worked on one of the same papers I had worked on in Nebraska.

I told them that when I started into the business in Nebraska in early 1975, I attended a convention, and soon discovered that they had seminars and classes from 7:30 a.m. until 11 p.m.

Then during my 10 years in Colorado, they never had a seminar, but they had some great speakers and entertainment. That was not quite right, but they are not nearly as serious as they were in Nebraska.

In Colorado, the social atmosphere was stressed, but we did have a great meeting with the governor every year. We also had a dinner with our representatives in the legislature and heard some great speakers.

In Texas, there seems to be more of a mix between the se-

Grain of Salt By Danny Reneau

rious "how-to" lessons and the inspirational speakers.

Much of the emphasis in Texas is in honoring the great newspaper people of the past. This year, Ken Towery, who won a Pulitzer Prize at Cuero; Leon Hale, a columnist in Houston; and the late Houston Harte and Bernard Hanks were all inducted into the Texas Newspaper Foundation Hall of Fame. Joseph L. Galloway, a war correspondent and columnist for many newspapers, was the featured speaker of the evening.

One of the big differences between the Texas Press Association and the associations in Colorado and Nebraska is that Texas has a winter convention and a summer convention. The winter convention is the business convention, and the summer convention is more of a fun time with the annual contests taking place at that time.

Some people wonder why the contests are important. I thought for many years that the main reason for them was to boost the ego of the people entering the contests. However, I have come to understand that, that is wrong.

I was fortunate, because as a young ad sales person in Nebraska, my paper entered some of my work in contests. One of my early ads was chosen as the Best Black and White Ad by the Inland Daily Press Association, which was a multi-state press association in the midwest. Another ad was chosen as the best newspaper ad by the Pontiac Motor Division.

When you ask what that did

for me - Well it did not make me any money, and it did not advance my position, but it did help me keep a positive attitude when I went for years without winning a contest.

Each year, we would enter the contests. Even though we did not win, we would study the results and comments on both our entries and other people's entries, and then we would attempt to improve our own work.

Eventually our work began to get attention, and we began to win awards. As that happened, other papers began calling and asking how, and why we did different things.

Last year, our graduation edition was chosen as the best special edition. Papers called and asked about it, and said they were going to try it as something different for their communities.

Another paper called to ask what lenses we were using to take pictures, because we consistently have good photos. Yet they knew we are a relatively small paper that can't afford an expensive approach to the business.

If you asked me what one thing I got out of this convention that I want to incorporate this year, I would tell you that during the talk by Joseph L. Galloway, he talked about being a member of the Vietnam commission, and their plans to have a three-year effort to welcome Vietnam veterans back on the 50th anniversary of that war.

After the speech, while he was signing his new book "We Were Soldiers Once... and Young", I asked what we as a newspaper or I as person could do in my own community to promote their effort? He directed me to his website, so I will attempt to follow up on this.



ACTS Bracelets

Fisher of Men Bracelet

Frank's Jewelry
409-385-3501
135 E Ave H • Downtown Silsbee



GET READY FOR SPRING

OVER 300 TRACTORS IN STOCK!
FINANCING UP TO 84 MONTHS!

Approx \$230 Per Month*

4025 40HP TRACTOR 2WD
Front End Loader



FULL LINE OF MAHINDRA IMPLEMENTS!

PACKAGE DEALS ON ALL MAKES & MODELS

Approx \$250 Per Month*

3016 30HP TRACTOR 4WD
Front End Loader



PACKAGE DEALS!

Approx \$289 Per Month*

4025 40HP TRACTOR 2WD
Front End Loader, Brush Hog, Box Blade & Trailer



Approx \$299 Per Month*

3016 30HP TRACTOR 4WD
Front End Loader, Brush Hog, Box Blade & Trailer



Approx \$330 Per Month*

3616 36HP TRACTOR 4WD
Front End Loader, 5' Brush Hog, 5' Box Blade & 18' Trailer



Your Choice!

DAVID SELF'S TEXAS TRACTOR COMPANY
HIGHWAY 96 - BUNA

GET SUPERIOR PERFORMANCE WITH A MAHINDRA
#1 SELLING TRACTOR IN THE WORLD
Carry Larger Loads
*WAC with 10% down

409-994-3522 • 800-549-3522 • www.davidselftractors.net

Years of Service



Deborah K. Walters was honored with 30 years of service to Hardin County. Walters is a court reporter in the 356th District Court. Presenting a certificate is 356th District Judge Steve Thomas.

0% APR AVAILABLE

Cowboy

Voted #1 In The USA For Customer Experience

NEW Dodge Charger SE Sport

Power Seats
Alloy Wheels
Automatic

Only \$20,999

Sik#H339608

NEW JEEP WRANGLER 4 DOOR UNLIMITED

Power Windows
Power Locks
Automatic
#L242420

Save \$15,000

NEW 2015 DODGE CARAVAN

Power Windows
Power Locks
Cruise & Tilt
#R616898

Only \$17,999

NEW! NEW RAM 1500 4Door

Power Windows
Power Locks
VS Automatic

Only \$24,999

Sik#S456765

NEW 2014 Jeep Patriot \$0 DOWN!

Only \$199/mo
Or **\$14,999**

Sik#D812854

NEW 2015 Chrysler 200 S

WOW
Only \$249/mo

2005 #N200710

"We'll beat ANY DEAL IN THE STATE OF TEXAS or give you your car for FREE!"

CALL TODAY... (409) 385-3796 OR 1-877-473-6215
1305 Hwy. 96 Bypass, Silsbee, (Next to Wal-Mart) Visit us online at cowboyautogroup.com



Find us on:  **facebook.**

1. Dodge Charger SE Sport MSRP \$27,999, Rebate \$4,000, CB Discount \$2,999, CC \$4,250, Sale Price \$20,999. *TAX. 2. 2014 Jeep Patriot MSRP \$18,200, \$500 Rebate, \$13,700 Sale. *TAX. In cash. 3. New Dodge Caravan MSRP \$27,999, Rebate \$4,250, CB \$2,750, Sale Price \$20,999. *TAX. 4. 2014 Jeep Patriot MSRP \$18,200, \$500 Rebate, \$13,700 Sale. *TAX. In cash. 5. 2015 Chrysler 200 MSRP \$25,499, Sale Price \$24,999. *TAX. 6. 2015 Dodge Caravan MSRP \$27,999, Rebate \$4,000, CB Discount \$2,999, CC \$4,250, Sale Price \$20,999. *TAX. 7. 2015 Jeep Patriot MSRP \$18,200, \$500 Rebate, \$13,700 Sale. *TAX. In cash. 8. 2015 Dodge Caravan MSRP \$27,999, Rebate \$4,000, CB Discount \$2,999, CC \$4,250, Sale Price \$20,999. *TAX. 9. 2015 Jeep Patriot MSRP \$18,200, \$500 Rebate, \$13,700 Sale. *TAX. In cash. 10. 2015 Dodge Caravan MSRP \$27,999, Rebate \$4,000, CB Discount \$2,999, CC \$4,250, Sale Price \$20,999. *TAX. 11. 2015 Jeep Patriot MSRP \$18,200, \$500 Rebate, \$13,700 Sale. *TAX. In cash. 12. 2015 Dodge Caravan MSRP \$27,999, Rebate \$4,000, CB Discount \$2,999, CC \$4,250, Sale Price \$20,999. *TAX. 13. 2015 Jeep Patriot MSRP \$18,200, \$500 Rebate, \$13,700 Sale. *TAX. In cash. 14. 2015 Dodge Caravan MSRP \$27,999, Rebate \$4,000, CB Discount \$2,999, CC \$4,250, Sale Price \$20,999. *TAX. 15. 2015 Jeep Patriot MSRP \$18,200, \$500 Rebate, \$13,700 Sale. *TAX. In cash. 16. 2015 Dodge Caravan MSRP \$27,999, Rebate \$4,000, CB Discount \$2,999, CC \$4,250, Sale Price \$20,999. *TAX. 17. 2015 Jeep Patriot MSRP \$18,200, \$500 Rebate, \$13,700 Sale. *TAX. In cash. 18. 2015 Dodge Caravan MSRP \$27,999, Rebate \$4,000, CB Discount \$2,999, CC \$4,250, Sale Price \$20,999. *TAX. 19. 2015 Jeep Patriot MSRP \$18,200, \$500 Rebate, \$13,700 Sale. *TAX. In cash. 20. 2015 Dodge Caravan MSRP \$27,999, Rebate \$4,000, CB Discount \$2,999, CC \$4,250, Sale Price \$20,999. *TAX. 21. 2015 Jeep Patriot MSRP \$18,200, \$500 Rebate, \$13,700 Sale. *TAX. In cash. 22. 2015 Dodge Caravan MSRP \$27,999, Rebate \$4,000, CB Discount \$2,999, CC \$4,250, Sale Price \$20,999. *TAX. 23. 2015 Jeep Patriot MSRP \$18,200, \$500 Rebate, \$13,700 Sale. *TAX. In cash. 24. 2015 Dodge Caravan MSRP \$27,999, Rebate \$4,000, CB Discount \$2,999, CC \$4,250, Sale Price \$20,999. *TAX. 25. 2015 Jeep Patriot MSRP \$18,200, \$500 Rebate, \$13,700 Sale. *TAX. In cash. 26. 2015 Dodge Caravan MSRP \$27,999, Rebate \$4,000, CB Discount \$2,999, CC \$4,250, Sale Price \$20,999. *TAX. 27. 2015 Jeep Patriot MSRP \$18,200, \$500 Rebate, \$13,700 Sale. *TAX. In cash. 28. 2015 Dodge Caravan MSRP \$27,999, Rebate \$4,000, CB Discount \$2,999, CC \$4,250, Sale Price \$20,999. *TAX. 29. 2015 Jeep Patriot MSRP \$18,200, \$500 Rebate, \$13,700 Sale. *TAX. In cash. 30. 2015 Dodge Caravan MSRP \$27,999, Rebate \$4,000, CB Discount \$2,999, CC \$4,250, Sale Price \$20,999. *TAX. 31. 2015 Jeep Patriot MSRP \$18,200, \$500 Rebate, \$13,700 Sale. *TAX. In cash. 32. 2015 Dodge Caravan MSRP \$27,999, Rebate \$4,000, CB Discount \$2,999, CC \$4,250, Sale Price \$20,999. *TAX. 33. 2015 Jeep Patriot MSRP \$18,200, \$500 Rebate, \$13,700 Sale. *TAX. In cash. 34. 2015 Dodge Caravan MSRP \$27,999, Rebate \$4,000, CB Discount \$2,999, CC \$4,250, Sale Price \$20,999. *TAX. 35. 2015 Jeep Patriot MSRP \$18,200, \$500 Rebate, \$13,700 Sale. *TAX. In cash. 36. 2015 Dodge Caravan MSRP \$27,999, Rebate \$4,000, CB Discount \$2,999, CC \$4,250, Sale Price \$20,999. *TAX. 37. 2015 Jeep Patriot MSRP \$18,200, \$500 Rebate, \$13,700 Sale. *TAX. In cash. 38. 2015 Dodge Caravan MSRP \$27,999, Rebate \$4,000, CB Discount \$2,999, CC \$4,250, Sale Price \$20,999. *TAX. 39. 2015 Jeep Patriot MSRP \$18,200, \$500 Rebate, \$13,700 Sale. *TAX. In cash. 40. 2015 Dodge Caravan MSRP \$27,999, Rebate \$4,000, CB Discount \$2,999, CC \$4,250, Sale Price \$20,999. *TAX. 41. 2015 Jeep Patriot MSRP \$18,200, \$500 Rebate, \$13,700 Sale. *TAX. In cash. 42. 2015 Dodge Caravan MSRP \$27,999, Rebate \$4,000, CB Discount \$2,999, CC \$4,250, Sale Price \$20,999. *TAX. 43. 2015 Jeep Patriot MSRP \$18,200, \$500 Rebate, \$13,700 Sale. *TAX. In cash. 44. 2015 Dodge Caravan MSRP \$27,999, Rebate \$4,000, CB Discount \$2,999, CC \$4,250, Sale Price \$20,999. *TAX. 45. 2015 Jeep Patriot MSRP \$18,200, \$500 Rebate, \$13,700 Sale. *TAX. In cash. 46. 2015 Dodge Caravan MSRP \$27,999, Rebate \$4,000, CB Discount \$2,999, CC \$4,250, Sale Price \$20,999. *TAX. 47. 2015 Jeep Patriot MSRP \$18,200, \$500 Rebate, \$13,700 Sale. *TAX. In cash. 48. 2015 Dodge Caravan MSRP \$27,999, Rebate \$4,000, CB Discount \$2,999, CC \$4,250, Sale Price \$20,999. *TAX. 49. 2015 Jeep Patriot MSRP \$18,200, \$500 Rebate, \$13,700 Sale. *TAX. In cash. 50. 2015 Dodge Caravan MSRP \$27,999, Rebate \$4,000, CB Discount \$2,999, CC \$4,250, Sale Price \$20,999. *TAX. 51. 2015 Jeep Patriot MSRP \$18,200, \$500 Rebate, \$13,700 Sale. *TAX. In cash. 52. 2015 Dodge Caravan MSRP \$27,999, Rebate \$4,000, CB Discount \$2,999, CC \$4,250, Sale Price \$20,999. *TAX. 53. 2015 Jeep Patriot MSRP \$18,200, \$500 Rebate, \$13,700 Sale. *TAX. In cash. 54. 2015 Dodge Caravan MSRP \$27,999, Rebate \$4,000, CB Discount \$2,999, CC \$4,250, Sale Price \$20,999. *TAX. 55. 2015 Jeep Patriot MSRP \$18,200, \$500 Rebate, \$13,700 Sale. *TAX. In cash. 56. 2015 Dodge Caravan MSRP \$27,999, Rebate \$4,000, CB Discount \$2,999, CC \$4,250, Sale Price \$20,999. *TAX. 57. 2015 Jeep Patriot MSRP \$18,200, \$500 Rebate, \$13,700 Sale. *TAX. In cash. 58. 2015 Dodge Caravan MSRP \$27,999, Rebate \$4,000, CB Discount \$2,999, CC \$4,250, Sale Price \$20,999. *TAX. 59. 2015 Jeep Patriot MSRP \$18,200, \$500 Rebate, \$13,700 Sale. *TAX. In cash. 60. 2015 Dodge Caravan MSRP \$27,999, Rebate \$4,000, CB Discount \$2,999, CC \$4,250, Sale Price \$20,999. *TAX. 61. 2015 Jeep Patriot MSRP \$18,200, \$500 Rebate, \$13,700 Sale. *TAX. In cash. 62. 2015 Dodge Caravan MSRP \$27,999, Rebate \$4,000, CB Discount \$2,999, CC \$4,250, Sale Price \$20,999. *TAX. 63. 2015 Jeep Patriot MSRP \$18,200, \$500 Rebate, \$13,700 Sale. *TAX. In cash. 64. 2015 Dodge Caravan MSRP \$27,999, Rebate \$4,000, CB Discount \$2,999, CC \$4,250, Sale Price \$20,999. *TAX. 65. 2015 Jeep Patriot MSRP \$18,200, \$500 Rebate, \$13,700 Sale. *TAX. In cash. 66. 2015 Dodge Caravan MSRP \$27,999, Rebate \$4,000, CB Discount \$2,999, CC \$4,250, Sale Price \$20,999. *TAX. 67. 2015 Jeep Patriot MSRP \$18,200, \$500 Rebate, \$13,700 Sale. *TAX. In cash. 68. 2015 Dodge Caravan MSRP \$27,999, Rebate \$4,000, CB Discount \$2,999, CC \$4,250, Sale Price \$20,999. *TAX. 69. 2015 Jeep Patriot MSRP \$18,200, \$500 Rebate, \$13,700 Sale. *TAX. In cash. 70. 2015 Dodge Caravan MSRP \$27,999, Rebate \$4,000, CB Discount \$2,999, CC \$4,250, Sale Price \$20,999. *TAX. 71. 2015 Jeep Patriot MSRP \$18,200, \$500 Rebate, \$13,700 Sale. *TAX. In cash. 72. 2015 Dodge Caravan MSRP \$27,999, Rebate \$4,000, CB Discount \$2,999, CC \$4,250, Sale Price \$20,999. *TAX. 73. 2015 Jeep Patriot MSRP \$18,200, \$500 Rebate, \$13,700 Sale. *TAX. In cash. 74. 2015 Dodge Caravan MSRP \$27,999, Rebate \$4,000, CB Discount \$2,999, CC \$4,250, Sale Price \$20,999. *TAX. 75. 2015 Jeep Patriot MSRP \$18,200, \$500 Rebate, \$13,700 Sale. *TAX. In cash. 76. 2015 Dodge Caravan MSRP \$27,999, Rebate \$4,000, CB Discount \$2,999, CC \$4,250, Sale Price \$20,999. *TAX. 77. 2015 Jeep Patriot MSRP \$18,200, \$500 Rebate, \$13,700 Sale. *TAX. In cash. 78. 2015 Dodge Caravan MSRP \$27,999, Rebate \$4,000, CB Discount \$2,999, CC \$4,250, Sale Price \$20,999. *TAX. 79. 2015 Jeep Patriot MSRP \$18,200, \$500 Rebate, \$13,700 Sale. *TAX. In cash. 80. 2015 Dodge Caravan MSRP \$27,999, Rebate \$4,000, CB Discount \$2,999, CC \$4,250, Sale Price \$20,999. *TAX. 81. 2015 Jeep Patriot MSRP \$18,200, \$500 Rebate, \$13,700 Sale. *TAX. In cash. 82. 2015 Dodge Caravan MSRP \$27,999, Rebate \$4,000, CB Discount \$2,999, CC \$4,250, Sale Price \$20,999. *TAX. 83. 2015 Jeep Patriot MSRP \$18,200, \$500 Rebate, \$13,700 Sale. *TAX. In cash. 84. 2015 Dodge Caravan MSRP \$27,999, Rebate \$4,000, CB Discount \$2,999, CC \$4,250, Sale Price \$20,999. *TAX. 85. 2015 Jeep Patriot MSRP \$18,200, \$500 Rebate, \$13,700 Sale. *TAX. In cash. 86. 2015 Dodge Caravan MSRP \$27,999, Rebate \$4,000, CB Discount \$2,999, CC \$4,250, Sale Price \$20,999. *TAX. 87. 2015 Jeep Patriot MSRP \$18,200, \$500 Rebate, \$13,700 Sale. *TAX. In cash. 88. 2015 Dodge Caravan MSRP \$27,999, Rebate \$4,000, CB Discount \$2,999, CC \$4,250, Sale Price \$20,999. *TAX. 89. 2015 Jeep Patriot MSRP \$18,200, \$500 Rebate, \$13,700 Sale. *TAX. In cash. 90. 2015 Dodge Caravan MSRP \$27,999, Rebate \$4,000, CB Discount \$2,999, CC \$4,250, Sale Price \$20,999. *TAX. 91. 2015 Jeep Patriot MSRP \$18,200, \$500 Rebate, \$13,700 Sale. *TAX. In cash. 92. 2015 Dodge Caravan MSRP \$27,999, Rebate \$4,000, CB Discount \$2,999, CC \$4,250, Sale Price \$20,999. *TAX. 93. 2015 Jeep Patriot MSRP \$18,200, \$500 Rebate, \$13,700 Sale. *TAX. In cash. 94. 2015 Dodge Caravan MSRP \$27,999, Rebate \$4,000, CB Discount \$2,999, CC \$4,250, Sale Price \$20,999. *TAX. 95. 2015 Jeep Patriot MSRP \$18,200, \$500 Rebate, \$13,700 Sale. *TAX. In cash. 96. 2015 Dodge Caravan MSRP \$27,999, Rebate \$4,000, CB Discount \$2,999, CC \$4,250, Sale Price \$20,999. *TAX. 97. 2015 Jeep Patriot MSRP \$18,200, \$500 Rebate, \$13,700 Sale. *TAX. In cash. 98. 2015 Dodge Caravan MSRP \$27,999, Rebate \$4,000, CB Discount \$2,999, CC \$4,250, Sale Price \$20,999. *TAX. 99. 2015 Jeep Patriot MSRP \$18,200, \$500 Rebate, \$13,700 Sale. *TAX. In cash. 100. 2015 Dodge Caravan MSRP \$27,999, Rebate \$4,000, CB Discount \$2,999, CC \$4,250, Sale Price \$20,999. *TAX.

Two local students achieve All-State choir honors

Voice teacher Melinda Stanton of Silsbee is pleased to announce that her students Rebecca Joy Darby, Soprano 1, and Elijah Paul Boughan, Bass 2, have been selected to the TMEA (Texas Music Educators' Association) All-State Choir.

The January 10 audition in Deer Park followed months of preparation and two prior auditions. They will be part of the premier performance of the All-State Small School Mixed Choir in San Antonio on February 14.

Rebecca, daughter of Dan and Paula Darby of Silsbee, is a senior who attends GRACE homeschool coop and studies voice with Betty Shine and both voice and piano with Melinda Stanton.

She is employed as choir director at First United

Methodist Church in Silsbee and enjoys team sports, drama, and writing in addition to her musical activities.

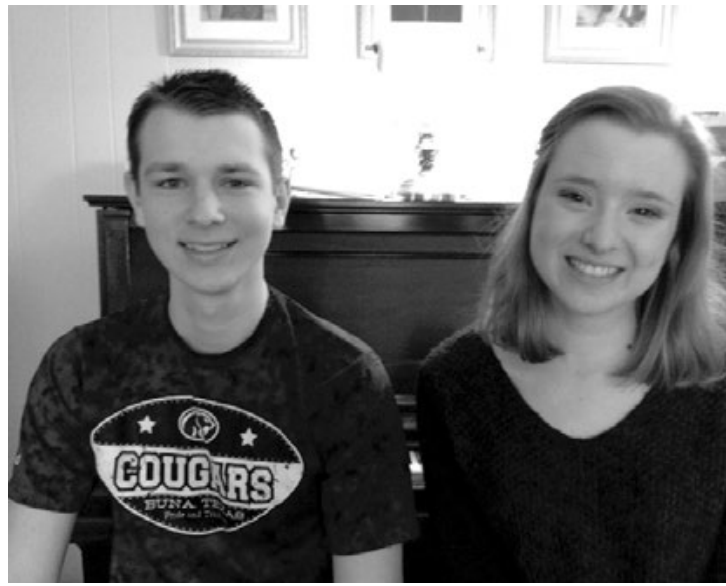
She has been involved in student council, Teen Pact leadership camps, and UMYF at her church. She is interested in pursuing a career in music education.

Elijah, son of Paul and Kasey Boughan of Buna, is a junior homeschool student at DueNorth Academy.

He is a kennel hand at Buna Veterinary Clinic and is active in music groups at his church: Amplified—the Acappella youth choir—and Lifeline—the youth band. Elijah hopes to pursue studying the Bible, music, and zoo keeping.

TMEA All-State is the highest honor a Texas music student can receive.

All-State performances are



Elijah Boughan and Rebecca Darby

held as part of the annual TMEA Clinic/Convention in San Antonio.

Over 22,000 people from Texas and beyond will attend

over 200 workshops, 60 concerts, and visit over 1,100 exhibit booths at the nation's largest music educators' convention.

Townsend's Terrific Taxes

111 Hwy 96 S 409-373-6466 Silsbee



Open January 1 - April 15

Monday & Tuesday 9 am - 7 pm

Also available in the evenings by appointment

Walk-ins Welcome!

"Let us make filling taxes an enjoyable experience for you!"

Calvary Missionary Baptist Church

"I can do all things through Christ which strengtheneth me." Phillipians 4:13

SUNDAY

Sunday School 10:00AM • Worship Service 11:00AM
BTC 5:30PM • Evening Worship 6:30PM

WEDNESDAY

Prayer Meeting 7:00PM • Discovery Bible Club 7:00PM

1360 Hwy 327 E • 385-5992 • Silsbee

Pastor Alton Harwell

Honor students named at Baylor University

More than 3,200 Baylor University students were named to the Dean's Academic Honor Roll for the 2014 fall semester.

To be named to the Dean's List, a student must be an undergraduate with a minimum grade-point average of 3.7, while enrolled in a minimum of 12 semester hours.

A private Christian university and a nationally ranked liberal arts institution, Baylor is classified as a research university with "high research

activity" by the Carnegie Foundation for the Advancement of Teaching. This blends with Baylor's international reputation for educational excellence built upon the faculty's commitment to teaching, scholarship and interdisciplinary research to produce outstanding graduates. □ □

Ashley Lynae Waters, College of Arts and Sciences, Kountze

Emily C. Deville, School of Engineering and Com-

puter Science, Lumberton

Madison Lee Gallien, Hankamer School of Business, Lumberton

Eric Steven James, College of Arts and Sciences, Lumberton

Maci Sinclair Lemons, Hankamer School of Business, Lumberton

Phoebe Seng Suy, College of Arts and Sciences, Silsbee

James W Robinson, College of Arts and Sciences, Woodville

Hardin County Camera Club meeting Tuesday

The next regular monthly meeting for the Hardin County Camera Club will be Tuesday, Feb. 3 at 6:30 p.m. in the Fellowship Hall at First Baptist Church in Silsbee.

The theme for the Club's February contest is "eyes" and the subject in March is "barren trees." The topic of discussion is "Exposure Triangle."

If you have any questions, please call Paula Smith at 409-651-3773.

Kountze ISD names Teacher of the Month

With a new year comes a new teacher of the month recipient.

The Kountze High School staff has nominated Bobby Fife as Teacher of the Month.

Fife is the Kountze Inde-

pendent School District Band Director. His colleagues noted he is a "no excuses" teacher that ensures all students are successful all of the time, regardless of subject material.

Fife was also described as a

wonderful asset to KISD due to his dedication to continually building the quality of the band program and the first division ratings the band receives time after time in band competitions each school year.

These awards and his hard work have been recognized with the distinction of Fife being named Kountze High School's January Teacher of the Month.

Always Fresh, Hot and Tasty CREOLE FRIED CHICKEN

Bagged Ice • Snacks • Drinks
Milk • Convenience Items

Buy Any Fish or Shrimp Dinner and Get a

FREE DRINK
20oz Fountain

Beer Specials

Miller Lite Budweiser Bud Light
Your Choice 20 Pack Bottles **\$20.49**

Miller Lite Coors Coors Light Budweiser Bud Light
Your Choice 24 Pack Cans **\$22.49**

Cigarette Specials

Marlboro 3 packs **\$17.59**

We Sell Pre-Paid Cards

NOW OFFERING

Money Grams

Sending & Receiving

WE SELL BAGGED ICE



1240 N 5th St.
Silsbee

SILSBEE TOYOTA

Pre-Owned Super Center

TAX TIME SAVINGS

2014 CHEVY SONIC LT
Auto, PW/PL, Gas Saver



\$189 Per Month*
2 To Choose

2014 FORD FOCUS SE
Low Miles, Gas Saver



\$189 Per Month*
5 To Choose

2014 CHEVY CRUZE
Auto, PW/PL



\$199 Per Month*
5 To Choose

2014 FORD FUSION SE
Auto, PW/PL, Very Nice



\$229 Per Month*
2 To Choose

NO CREDIT? BANKRUPTCY? SLOW CREDIT?
REPO?

We Have Financing Options For You!!

1396 Hwy 327 E • Hwy 96 N @ Hwy 327 E • Silsbee
www.SilsbeeToyota.com

895-3700

*2014 Chevy Sonic: Sales Price \$13,495, \$1,350 Down Payment. 2014 Chevy Cruze: Sale Price \$14,295, \$1,430 Down Payment. 2014 Ford Focus: Sale Price \$14,630, \$1,470 Down Payment. 2014 Ford Fusion: Sales Price \$16,730, \$1,680 Down Payment. All payments figured with 10% down plus TT&L at 1.9% for 72 months. With Approved Credit.

**Valentine's Day
DINNER AND DANCE**

ELVIS Saturday, February 14
7:30 - Midnight
\$25 Per Person

Guest Entertainment: Elvis
Menu: Mexican Buffet

Contact Tonya or Scott Townsend
at 385-0558 for reservations or info.

Hickory Hill
3730 Hickory Hill Rd • Silsbee

Connecting and re-motivating

Around The Writer's Block By Daniel Elizondo

It's always fun attending Texas Press Association conventions held twice a year.

Last weekend, The Silsbee Bee was invited to attend the annual Mid-Winter Convention, which was held in Galveston this year.

Being in the newspaper business, sometimes you don't always get the best compliments, or sometimes you just don't get compliments.

However, I am proud to say that I consistently receive enough good compliments from the great community of Silsbee and Hardin County residents on The Bee, that I am able to share that with my fellow newspaper people of Texas.

It even goes further, when your fellow newspaper friends reach out to compliment the hard work of the staff of The Silsbee Bee.

I started working in the newspaper business in 1990 in the advertising production department of the Pleasanton Express. That paper is one of the largest weekly newspapers in the State of Texas.

After years of learning the trade of the newspaper, I branched out to the distribution area, getting my hands covered in ink from handling all of the freshly, printed newsprint.

It was then, that I realized that I was a true, bonafide newspaper person.

I often marveled in the back storeroom of the Pleasanton Express, finding old remnants of the linotype machine used

essence of how a camera works with light.

Before I knew it, I was helping our sports editor, by covering games, taking photos and eventually taking notes to write my own stories of the accounts of the game.

It wasn't long after that I was named Sports Editor of the Pleasanton Express in 2003.

Being a sports editor meant I was dealing with hard-nosed coaches and beligerent parents for years that helped me develop thick skin.

I felt I had become the newspaper man I wanted, but deep down, I wanted more.

I remember one of my newspaper friends from Gladewater, told me years ago, he would hire me as an editor, because of my ability as a sports editor to get the news quickly.

That always stuck in my mind for years.

I always thought that Gloria would some day become editor of the Pleasanton Express. She was a good candidate, but her years in the business wore on her, and she eventually retired.

She always told me that my path in the business is not limited with what I had learned and how I work. Even the previous editor of the newspaper that hired me, told me that I would someday be considered as an editor.

I was given the opportunity to expand to editor by coming to Silsbee, and today, I continue to grow and learn, just

like I did when I came into the business.

And just like then, I want more. I don't know how much more I want, but I know that I want more.

The path we take in this business, always comes to light after re-connecting with our fellow newspaper friends.

We share our stories of our struggles in the newspaper business, and how we fight to keep the voice of our communities alive in our product.

These conventions are fun, but at the same time, they help us make you, the readers, an instrumental part of the community's voice.

Danny and Jan Reneau kept the legacy of The Silsbee Bee an integral part of Hardin County. And I'm blessed that they gave me the opportunity to expand on my abilities as an editor of one of the best weekly newspapers in the state.

It hasn't been an easy road, and the learning curve from sports to editorial was challenging, but it is falling into place.

I always keep the work ethic of Gloria in me. And having re-connected with a few newspaper friends last weekend, all of our struggles have been the same. And all of us leave the convention the same - feeling re-motivated.

Here is to another great year, Silsbee. Ink is forever in my blood.

Follow me on Twitter @delizondo

THE BOTTLE SHOP

BUY HERE FOR SUPERBOWL

American Owned & Operated

5% Discount on all **CASH PURCHASES**

BEST PRICES IN TOWN STOREWIDE

WE CASH Payroll Checks Income Tax

TBS Candles Super Bowl Pigskin Scent of the Week LEATHER only \$6^{8 oz.} jar

WE SELL Lottery Tickets

102 Pine Plaza **385-6839** Silsbee
OPEN Mon - Sat 10 am - 9 pm

Compare Our Rates

Call Us For **Auto Insurance**

- Competitive Prices
- Flexible Payment Plans
- Quality Insurance companies

Silsbee Women's Club is sponsoring a **CHICKEN SPAGHETTI LUNCH** (Spaghetti, vegetable, salad and dessert)



Delivering To Your Business on **February 25th**

\$8⁰⁰ per plate

The proceeds will go toward Scholarships, and other projects of the Silsbee Woman's Club.

Our members will be calling on businesses to take orders... Or you can contact
Kathy at 936-635-0988
Martha at 409-651-4744

CALL US FOR A QUOTE ON ALL YOUR INSURANCE NEEDS

Cravens Insurance Agency

510 North 5th St. 385-2854 or 1-800-286-2854
Carey Georgas Rob Georgas
www.cravensinsurance.com

Nichols receives committee assignments

Lt. Gov. Dan Patrick announced this evening that State Senator Robert Nichols (R-Jacksonville) will serve on four committees during the 84th Legislative Session.

Nichols will serve on the Senate Intergovernmental Relations Committee, Natural Resources and Economic Development Committee and the Finance committee. He will continue to serve as Chair for the Senate Transportation Committee.

"I look forward to continuing my work on both the Natural Resources and Economic Development Committee and the Intergovernmental Relations Committee," said

Nichols. "As Chair of the Transportation Committee, I will bring my experiences with transportation issues to the Finance Committee. I will work with my colleagues to help pass a conservative balanced budget while maintaining essential services and preserving the existing infrastructure to the level Texans expect and deserve, without raising taxes."

First elected to the Texas Senate in 2007, Robert Nichols represents 19 counties including the greater part of East Texas and Montgomery County.

During his four sessions as a state senator, Nichols au-

thored and passed legislation to protect landowners' rights, increase educational opportunities in East Texas and reform transportation policies. He has worked to reduce Medicaid fraud, and promote free-market principles. During his time with the Sunset Advisory Committee, he was able to help eliminate six state agencies which saved the tax payers \$161.9 million. He has been named a 'Champion for Children' by the Equity Center, a 'Friend of County Government' by the Texas Association of Counties and a 'Champion of Free Enterprise' by the Texas Association of Business.

Nichols, Ashby file legislation for schools funding

Senator Robert Nichols (R-Jacksonville) and Representative Trent Ashby (R-Lufkin) have jointly filed legislation to correct the formulas that fund certain small schools at a lower level.

"It is unfair that a small school is penalized and funded differently based on the size of the area they

serve," said Nichols. "Creating an equal multiplier in the formula across the board will provide many schools with additional funding, which will go a long way in helping to improve the education of our students."

Currently, if a school has an average daily attendance of 1,600 and covers less than 300 square miles, they receive approximately 40 percent less in funding than a district with the same attendance which covers more than 300 square miles. Senate Bill 324 and House Bill 645 will alleviate this practice and create an equal funding measure across the board for all schools in Texas.

"There are hundreds of districts around the state that are being penalized due to an archaic formula," said Ashby. "While these local school dis-

tricts have been doing an admirable job of educating our students with less state funding, we shouldn't arbitrarily place them under a punitive formula because their landmass is under 300 square miles."

A change in the funding formula will affect approximately 450 schools across the state of Texas. The original bill was passed to encourage school districts to consolidate. However, as a school is often the heart of a community, many districts have chosen to not consolidate. This legislation would allow communities the option of maintaining local governance of their school board without having to work around a punitive formula.

TEXAS PRESS ASSOCIATION
BETTER NEWSPAPER CONTENT
AWARD WINNER
2014

THE SILSBEE BEE (USPS 496-6700)
Periodical Postage Paid At
SILSBEE, TEXAS 77656
Published Every Wednesday At
404 Highway 96 South
Silsbee, Texas 77656
(409) 385-5278

Subscription Rates \$24.00 Per Year
In Hardin, Jasper, Tyler
and Jefferson Counties
\$35.00 In All Others Of U.S.
POSTMASTER: Send Change of
Addresses To:
THE SILSBEE BEE
P.O. BOX 547
SILSBEE, TEXAS 77656

MEMBER 2013
TEXAS PRESS ASSOCIATION

THE SILSBEE BEE -STAFF-
DANNY RENEAUPublisher
DANIEL ELIZONDO.....Editor
MEAGAN MOORE.....Reporter
JAN RENEAU.....Ad Director
DEBBIE GORDON.....Bookkeeping
SARAH GORDON.....Composition
BRENT GUIDRY.....Photographer

Looking to Sell Your Car

LET US BUY IT

Call Silsbee Motor Company
409-385-0409

MILL

email. "It is too early to tell what impact there might be on any given site or location of either company."

The mill in Evadale specializes in beauty and personal care packaging that includes sprayers and pumps. The Silsbee plant, located on Old Evadale Road, specializes in dispensers, food packaging, and home and garden packaging.

According to a press release from MWV corporate office in Virginia, the merger will allow MWV stockholders to receive 0.78 shares of the new company merger for each share of MWV

held.

Rock-Tenn shareholders will be entitled to elect to receive either (a) 1.00 shares of the new company merger, or (b) cash in an amount equal to the volume weighted average price of Rock-Tenn common stock during a five-day period ending three trading days prior to closing for each share of Rock-Tenn held.

The cash and stock elections by Rock-Tenn shareholders will be subject to proration such that the resulting ownership of the merger will be approximately 50.1 percent by MWV share-

holders and 49.9 percent by Rock-Tenn shareholders, and based on the shares outstanding today, approximately 7 percent of Rock-Tenn shares will receive cash in lieu of stock.

This targeted ownership ratio of the merger will facilitate the continued favorable tax attributes of the previously announced spin-off of MWV's specialty chemicals business, which the parties intend to complete after the closing of the business combination.

"We are creating the leading global provider of consumer and corrugated packaging solu-

tions – and generating significant value for both companies' shareholders," John A. Luke, Jr., chairman and chief executive officer of MWV, said. "This transaction is a logical step that is borne of our strategic progress and financial success, and it offers MWV shareholders both immediate value and the opportunity to participate in significant upside as the new company generates substantial growth from its market-focused global strategy."

From Section 1, Page 1

WINE

reproduce his family recipe of raisin wine from generations past.

However, he ran into red tape since the dried fruit wine could not be marketed since prohibition.

So, Bruno and his brother, Rocky, set out to lobby at the Capitol in Austin in the late 1990's in an attempt to change the laws.

After a year and a half, The Bruno Law went into effect in 2000 and in 2001, The Bruno & George Winery was officially open for business.

He took it even a step further and lobbied on the federal level in 2001 to have raisin wine marked above 14 percent alcohol by volume.

After it was set on the backburner because of 911, federal law makers asked to put it on the national register. In 2005, Bruno received a letter from the Division of the Treasurer that Bruno Law was in effect, and raisin wine was officially a dessert wine.

The winery became the 42nd winery in the State of Texas. Today, there are over 300 wineries as Bruno & George enters its 15th year in business.

Bruno perfected the raisin wine of his grandfather, Salvatore Bruno, by making it with Chooljian Brother's Raisins from California.

The "Other than Standard Raisin Wine" is his signature piece he created from the family recipe that has become his bestseller. Today, it remains an award winning wine.

Bruno found his niche in raisin wine, however, the winemaker took it further and began to create berry wines.

The sweet, goodness Bruno perfected can be found in five berry wines that include blackberry, blueberry, cranberry, raspberry, and strawberry.

But that still wasn't enough. He ventured further into fruit wines that includes peach, pear, and Italian red plum.

Bruno says his berry and fruit wines are not flavored wines, but rather wines made with real fruits and berry's fermented just like grapes.

His patience in perfecting his new creations allowed for the business to skyrocket to what it is today.

"That is one of the dynamics of Bruno Wines," he said. "As simple as it is, it is about making sure the wine represents the fruit. You want to make sure that the fruit shines after it becomes wine. You can do a lot of things chemically that



Shawn Bruno samples some cranberry wine with friends Billy Tomlinson (far left) and Lucky Off. The wine is near completion from his warehouse in Sour Lake.

can sometimes wreck the wine."

With the popularity of his sweet wines, customers asked for the more traditional grape wines that Bruno has just began making the last couple of years.

To his collection, he has added a blended white wine that is Chardonnay, Reisling and Muscat, and a blended red wine that is Cabernet, Cabernet Franc and Merlot.

The passionate love for wine has made The Bruno & George Winery a success today.

Though he and his wife solely run the winery, Bruno says he is committed seven days a week to his business, while his wife is a full-time employee for Baylor College and Medicine in Houston.

Bruno and Misha bought out George 10 years ago, and today, they work together on the weekends to make sure the winery is continually running smooth.

He says the winery is producing over 4,000 gallons of wine a year, and it is bottled, corked, capsuled, labeled and shipped from his small facility in Sour Lake.

After buying out George, Bruno changed his marketing presence, now labeled The Bruno & George Winery featuring The Bruno Collection.

As many as 10 tanks line the walls of his warehouse that has become a science lab of sorts for Bruno.

There, he is continually trying new things, including a new pear wine he says will be a hit.

He is also not scared to enter wines in competition, having won several years in a row at the Houston Livestock Show and Rodeo international competition, which is the fifth largest competition in the nation.

He has also won awards in San Francisco and Dallas. His first award was in 2002 for his popular flagship raisin wine.

"I'm sending my wine from a little winery in Texas out to the big boys for competition," he said. "I'm not the 'Corleone Family' that will get special favors."

Bruno says the toughest part of his business was to convince package stores that his product would sell.

In the early stages, Bruno hustled to as many stores as he could. Today, he is widespread across Southeast Texas stores including big supermarket chains.

His wines have been featured in several publications that include Texas Monthly, Texas Highways and Texas Food Lovers. He has also been featured in most major newspapers in the State of Texas.

Though he works diligently on his wine, Bruno isn't afraid to join his retired friends Lucky Ott and Billy Tomlinson on occasion for tasting and cigars.

"The one thing about Shawn is that he is very passionate

about his business," Tomlinson said.

Bruno is proud of his family's tradition and displays his road to success with photos of all the generations that leads up to today.

"My motivation and my inspiration has been my grandfather," he said. "Do we expect bigger and better things for Bruno & George Winery in the future? Yes we do – yes we do."

From Section 1, Page 1

GUS' TIRE SHOP



NEW & USED TIRES

• FREE ALIGNMENT CHECK

• ALIGNMENT \$59.95

• MECHANIC ON DUTY

• STATE INSPECTION \$14.50

OPEN SUNDAYS 8-1PM
Mon - Fri: 7:30am - 6pm • Sat: 8am - 4pm

390 N 3rd St 386-1600 Silsbee



MAMA JACK'S

Enjoy Our Friendly Atmosphere

All You Can Eat

BREAKFAST BUFFET

Every Day 7:00 - 11:00 AM



Bacon • Sausage
Eggs • Grits
Biscuits/Gravy
Hashbrowns
Pancakes • Fruit

BYOB & Coolers Welcome

All You Can Eat

FRIDAY & SATURDAY NIGHT

Now Serving
Boiled Shrimp • Fried Shrimp \$21.95
BBQ Crabs
Fried Catfish • Baked Catfish
Plus All The Trimmings

JERRY & BARBARA JACKSON

215 PINE • KOUNTZE • 246-3450

Silsbee Motor Co.

LOCALLY OWNED & OPERATED BY: ALAN SANFORD AND MARK HILL

SALES SERVICE

2006 ACURA RL TECHNOLOGY PACKAGE
V6, auto, leather, backup camera, CD, heated/memory seats, On-Star, pwr. steering, sunroof, tilt, TV/DVD, woodgrain, keyless entry. #3466
\$11,995

2009 CHEVY SILVERADO 1500 LT CREW CAB
V8, auto, CD, cruise, keyless entry, On-Star, pwr. steering, PW/PL, steel wheels, tilt, second row folding seat. #3488
\$19,995

We Have Secured HUNDREDS OF THOUSANDS of Dollars for YOUR Finance Needs

2007 CHEVY TAHOE LTZ
V8, auto, leather, CD, cruise, heated/pwr. seats, rear defroster, remote ignition, keyless entry, third row seating, tilt, running boards, tow pkg, luggage rack, On-Star. #3469
\$17,995

2014 RAM 2500 SLT CREW CAB
Turbo diesel, auto, bedliner, cruise, keyless entry, running brds, steel wheels, tinted windows, tow pkg, interval wipers, pwr. steering, PW/PL. #3449
\$39,995

FULL SERVICE TIRE SHOP

Tire Packages
4 tire pkgs starting at
15" - \$345 18" - \$653
16" - \$562 19" - \$721
17" - \$571 20" - \$646

Set of 4 Installed - Road Hazard extra Cars, Vans, SUV and Light Duty Trucks. Some exclusions apply. Call for details.

FULL SERVICE MECHANIC SHOP

FREE Coolant System Inspection
Level and Conditions

ASE Certified Technicians

Coolant SYSTEM FLUSH
\$129.99 *Taxes

Protect your vehicle from freezing over with a coolant pressure check & flush by a professional.

DON'T FORGET TO ADD ROAD HAZARD

FREE ROTATION
Every 6,000 Miles
FREE TIRE REPAIRS
For Life Of Tires

STATE INSPECTIONS \$14.50

TECH-NET Professional AUTO SERVICE
2 Year/24,000 Mile Warranty on Service Work Nationwide

1360 Hwy 96 South Silsbee, TX

385-0409

Open Mon-Fri 8-6 pm Saturday 8-4pm

www.silsbeemotorcompany.com

NOW OPEN

Pro-Quip

EQUIPMENT RENTAL

Lawn Equipment • Generators
Pumps • Tractors • Trailers



Mon - Fri: 7AM - 4:30PM
Sat: 8AM - Noon



409-386-6828

Silsbee seeks community development block grant

City officials approve of application of grant that will serve 158 counties in Texas.

By Daniel Elizondo
editor@silsbeebее.com

The City of Silsbee officials unanimously approved of submitting an application for a block grant that will serve 158 counties with \$500 million.

If Silsbee was awarded a part of the grant, the city and county would receive around \$3.1 million.

The community development block grant is a part of a community development fund from the Texas Department of Agriculture.

The grant will be awarded to disaster recovery areas, especially those with wildfire dangers.

City Manager Tommy Bartosh told city councilmembers on Monday, Silsbee met the criteria for the application.

Bartosh said that Emergency Districts, including Silsbee Fire Department could use a water station vehicle that will supply water to trucks in rural areas during a wildfire. Also special fire suits made specifically for wildfire use could be purchased with the grant.

The grant application was approved and will be submitted by the March 15 deadline.

Councilmembers also approved of several resolutions in preparation for the upcoming May 9 election.

Council members Jim Willis of At-Large Place 2, Adalaide Balaban of Dist. C, Thomas Tyler of Dist. D and Mayor

Herbert Muckleroy all have terms ending this year.

The approval of the election comes with the approval of the location of city hall for early voting and Silsbee Community Center for the May 9 election in conjunction with Silsbee ISD.

Early voting was approved for April 27-28.

Councilmembers also ap-

proved of an ordinance authorizing participation with other cities in the area, to suppress a rate case increase by Entergy in regards to a new power plant the energy company is building.

Silsbee councilmembers unanimously voted for the ordinance and waived a second reading.

Councilmembers also ap-

proved of the city to enter an agreement with Christus Hospital.

The agreement will provide healthcare for low income residents in city and surrounding area. The agreement provides medicine at St. Elizabeth Hospital in Beaumont for those who don't get assistance from the state. There is no cost to city.

COTTAGE

they gave her their name, she could carry on a conversation with them, but if they did not, she pretty much stayed out of their way.

The dance hall and night club was one of the largest in Southeast Texas. It would handle between 450 and 500 people.

The place featured such artists as Charlie Boudro and his band; Iva Joe Hunter; and Mr. Jimmy Simmons, the recent president of Lamar even played there.

Flo says that all the musicians who played in the place were union members.

The locals would visit the place on Saturday nights and would bring their families out on Sunday afternoon for lunch.

Flo said that there was seldom trouble because everyone either feared Mr. Arnold and Frank, or respected them to the degree that they did not want any trouble.

When there was trouble, it was usually minor fisticuffs, and Flo soon learned that if Mr. Arnold and Frank were present, they could deal with it. But if they were not present, she would simply call for Sheriff Whit Whitaker, and file charges against the parties.

In 1951, Frank took over the establishment while working at the oil fields at that time. Mr. Arnold bought a shrimp boat and set out to seek his fortune on the seas.

Mr. Arnold's wife Agnes, ran the liquor store and cooked in the dance hall, which often had 10 to 20 employees. Flo basically ran the dance hall.

In 1958, Mr. Arnold sold his shrimp boat and died a short time later. The family continued to run the dance hall until Jan. 13, 1963 when a fire burned the dance hall.

Flo says the fire had been set with the starting point in the middle of the dance floor. Flo said a car drove up to the house to alert them that the dance hall was on fire. At that time the family had moved into the building that presently holds The Cottage.

At the time, Agnes was staying with them and had two broken arms.

Flo says that not only did the dance hall burn, but the liquor store and the eight rooms home behind it also burned.

Two fire trucks came from



Photo by Danny Reneau/Silsbee Bee

The Cottage remains open on Old Evadale Highway, and continues to serve customers with the same, homecooked meals.

Silsbee, but the water in them was frozen. The only truck that worked was one from Evadale.

By the end of the day, the family had lost their livelihood and still owed for all the liquor and beer in the place.

In 1963, they were suddenly \$87,000 in debt and did not have a job. Part of the debt was for liquor and beer, however, it had to be paid back. The place was insured but had a policy that stated that if there was any trouble at the place within 90 days that the insurance did not have to cover the catastrophe.

The only thing they could do was take their beer sign from in front of the dance hall, move it to their house, which they remodeled and went back into business.

Now that business known as The Cottage, which is celebrating its 50th Anniversary. It is one of the oldest businesses in Silsbee.

The Cottage, a small mom and pop eatery, has been around and owned by the same family since 1965.

Frank and Flo Arnold opened The Cottage two years after Frank's Night Club burned down.

Many of their customers from the night club transferred to their new business. Flo stated that their customers and regulars are what helped keep it open.

People all over have stopped to eat at The Cottage throughout the years. Throughout the surrounding area and even those from out of state have heard about and enjoyed the home-cooked meals created within the small diner. The Cottage may be locally owned, but it is nationally known.

The business is still going well. The Cottage is host to families, birthday parties, and anniversaries. Their motto is locally owned with a family atmosphere. Flo stated that their goals are to please everyone who steps through their door.

The Cottage serves different types of meals from deli sandwiches, hamburgers, seafood, and chicken fried steak. All of the food is cooked on the spot, none is prepared ahead of time.

There are many who have stopped to eat at the family restaurant. Flo recounted a memory of men who worked at the paper mill who flew in on a helicopter, landing in the grassy field across from the restaurant, to stop and eat at The Cottage.

About three to four genera-

tions of families have passed through the doors of The Cottage.

According to Flo, there are children and young adults who go and eat there whose grandparents first started going there back when The Cottage was first established. It has been one of the oldest restaurants around.

Flo says that the key workers in the place have been her family members. Frankie, her daughter, still works there. A son Frank III worked there at different times.

Many of the people who have worked in the Cottage have been people whose families worked there before them.

"I was here before they built a Dairy Queen in Silsbee," Flo stated.

There are pictures hanging on the walls left behind of customers, their grown children following the tradition.

To this day, Flo still maintains her belief that "what happens at The Cottage stays at The Cottage."

Today it is just simply a great place to share a meal. It has been discovered by everyone from those passing by to congressmen. People still travel from all over this region to eat at The Cottage.

The place only seats 35 in-

stead of 500. However, all 35 who venture through the door are special to Flo.

Now she is well past 80, and has come to realize that you don't get rich in a place like The Cottage, but the place still continues to be a profitable venture where she can be a part of a lot of people's lives.

Last Monday, Dennis and Megan Williams, who own Longhorn Liquor Store, wanted to have a private party for friends and wanted The Cottage to host.

After eating, Dennis brought in a large cake to celebrate the 50th anniversary of the small restaurant. It had been a surprise party for Flo and her long-time employees, including her daughter, Frankie.

"I thought that was one of the nicest things that anyone has ever done for me," Flo stated.

Flo and Frankie have no intentions of retiring or closing their beloved Cottage anytime soon.

Both mother and daughter stated, "We're not closing."

There is plenty of time for everyone to travel to The Cottage for great food and atmosphere.

EMT-CPR-AED BASIC COURSE

Looking for ambitious students for the next EMT-CPR-AED Basic course. Also for potential students the First Responder Medical Course like the police and the fire department utilize.



Please Call For Further Information
409-651-5566



Customized
business
coverage.

Dean Robinson, Agent
510 Highway 327 East
Silsbee, TX 77656
Bus: 409-385-1377
dean.robinson.b4ob@statefarm.com

As a small business owner, I understand the importance of tailoring small business coverage to meet your unique needs. Choose small business insurance that's right for you.
Get to a better State®.
Get State Farm.
CALL ME TODAY.

State Farm®

State Farm Fire and Casualty Company, State Farm General Insurance Company, Bloomington, IL
State Farm Florida Insurance Company, Winter Haven, FL
State Farm Lloyds, Dallas, TX

1301394

TO ALL INTERESTED PERSONS AND PARTIES:

TXI Operations, LP, has applied to the Texas Commission on Environmental Quality (TCEQ) for renewal of Air Quality Permit No. 689, which would authorize continued operation of a Concrete Batch Plant located at 2100 West Martin Luther King Jr Drive, Silsbee, Hardin County, Texas 77656. Additional information concerning this application is contained in the public notice section of this newspaper.

OPEN ADMISSION POLICY STATEMENT FOR A NURSING HOME

It is the policy of the Silsbee Oaks Health Care, L.L.P. to admit and to treat all patients without regard to race, color, religion, national origin, age or handicap. The same requirement for admission are applied to all and the patients are assigned within the nursing home without regard to race, color, religion, national origin, age or handicap.

There is no distinction in eligibility for, or in the manner of providing any patient service provided by or through the nursing home. All facilities of the nursing home are available without distinction to all patients and visitors regardless of race, color, religion, national origin, age or handicap. All persons and organizations that have occasion either to refer patients for admission or recommend the Silsbee Oaks Health Care, L.L.P. are advised to do so without regard to the patient's race, color, religion, national origin, age or handicap.

Administrator, Anna Tanton



Photo by Danny Reneau/Silsbee Bee

The old "beer" sign remains on the property of The Cottage. It was the original sign when Arnolds were running Frank's Place, a bar and grill many years ago.

www.silsbeebее.com

Obituaries



Elizabeth "Lisa" Noelle Wilson-Bon

Inspiration to all, beautiful in body and spirit, a fighter, courageous, humorous – these are just some of the sentiments of her facebook friends. Lisa received her angel wings Saturday, January 24th at Harbor Hospice in Beaumont. She entertained the angels with her irreverent humor at the visitation Monday, January 26th, 6-9pm at Adams-Stringer Funeral Home in Buna. The memorial service was on Tuesday, January 27th at First Baptist Church in Buna at 5pm.

Lisa came into the world January 5, 1966, at Grandma Myrtle Wilson's house in Beaumont (so anxious to begin her celebration of life), to parents Charles and Dolores Wilson of Buna. She attended Buna and Evadale High Schools, Lamar University and then received an Art/Design degree from the Art Institute of Houston. Her desire to help others led her into the Paramedical Field at San Jacinto College. She became a paramedic and worked for various EMS companies – OCAS, Transtar, Acadia – where she was a "BFF" to so many. When she became disabled with cancer, Lisa then began work with UTMB – Orange County Health Depart-

ment, also working as a Bio-Terrorism Coordinator. Eventually, Lisa left Orange County to become a clinic manager for Premier Surgical Associates where she retired with her disability June 30, 2014.

She was loved by all who knew her, but most especially by her soul mate, Pete Bond, who traveled all over the United States with her to rock concerts. They missed very few Rockfests!!

Lisa was beautiful in spirit, unique in personality, stoic, and full of irreverent humor. She was a member of the United Methodist Church in Buna, but grew up in Central Baptist Church of Evadale. She is also a member of The Order of The Eastern Star – Buna Chapter #968.

Survivors include her husband William "Pete" Bond of Buna and her beautiful daughter, Rachel Wilson of Cypress.

Also, her parents Charles and Dolores Wilson of Buna, brother Greg and his wife Jennifer of Wildwood, and brother Bruce and his wife Beverly of Round Rock. Also mourning are her husband's family, Bill and Betty Ann Bond of Buna and Pete's sister, Dee Lawson and husband John of Lake Charles. She will also be missed by nieces Hayley Wilson of Beaumont, Hannah Wilson of Wildwood and nephew Blake Wilson of Buna and numerous aunts, uncles and cousins on the Wilson and Bond sides of the family.

Lisa just turned 49 and had been battling cancer for 15 years, but lost the war. Everyone loved her beautiful smile, laugh and witicism. Even in her last days, even through all the pain and anxiety, she was smiling and making jokes - trying to make everyone else feel better. That is just who she was.

In lieu of flowers, the family would like a donation made to the American Cancer Society.

James Bobo

James "Jim" Harvey Bobo, 72, of Silsbee, died Friday, January 23, 2015.

Funeral service was Sunday, January 25 at Faith Tabernacle Pentecostal Church in Kountze under the direction of Broussard's Mortuary in Silsbee with burial following in Oak Bluff Cemetery in Port Neches.

A native of Springs, Arkansas, he was a United States Air Force veteran and retired from teaching, welding and ministering.

Survivors include his wife, Norma Chance Bobo; daughter, Judy Jolynn Bobo of Silsbee; sisters, Nadine Hoover and Maxine Wornicka, both of Norman, Arkansas and June Bobo of Nederland; and one grandchild and two great-grandchildren.

Thomas Brown Jr.

Thomas "Tom" Reginald Brown Jr., 75, of Kountze, died Friday, January 23, 2015.

He had worked as a pipefitter with Local 195.

Survivors include his wife, Rita Brown; sons, Tommy Brown and wife Debby of Cedar Park; daughter, Laura Lawrence and husband Kenneth of Kountze; and four grandchildren and eight great-grandchildren.

Per Tom's wishes, no public service was held. Broussard's Mortuary in Kountze handled the arrangements.

Eugene Hare

Funeral services for Eugene Hare, 94, of Silsbee were at 10:00 a.m. Wednesday, January 28, 2015 at Farmer Funeral Home with interment following at Cunningham Cemetery. Visitation was Tuesday, January 27, 2015 from 5:00 p.m. until 8:00 p.m. at the funeral home.

Mr. Hare passed away Sunday, January 25, 2015 at Silsbee Oaks Healthcare.

A native and longtime resident of Silsbee, he was retired from Gulfco, where he worked as a welder. Mr. Hare loved hunting, fishing, and playing his guitar. He served his country proudly in the United States Army Air Force.

Eugene is preceded in death by his father, Lev Haire; mother, Louise Reece Hare; brothers, T.L. and Truman Hare; sister, Opal Moulder; and great granddaughter, Haylee Harrison.

Survivors include daughters, Annette Flowers and husband David of Vidor, Linda McCarley of Allen, Marietta Arrington and husband Kenneth of Mesquite, and Angela Stevens and husband Paul of Sunnyvale, TX; sixteen grandchildren, forty-one great grandchildren and six great grandchildren.



Owner of lost ring sought

Carol Konedey, the daughter of Fred and Ruth Cohrt, discovered a Balfour class ring a number of years ago bearing the inscription Truth, Honor, Integrity.

It bears the initials LAW and has what appears to be a cat of some kind on one side.

The ring was found near Lake Tejas during the 1980's.

She would like to find the owner of the ring if possible.

Anyone knowing anyone that the ring might belong to can call 409-454-2227.



ANGEL'S FLORIST AND GIFTS

Award Winning Best Florist ~ Best Designer

275 Hwy 96 S. Silsbee (Next to Brookshire Brothers)

(409) 386-1433

Larry Ryan Jr.

Larry Edward Ryan Jr., 65, of Jasper, died Tuesday, January 20, 2015 at Jasper Memorial Hospital.

Funeral service was Thursday, January 22 at Farmer Funeral Home in Silsbee with burial following in R.S. Farmer Cemetery, also in Silsbee.

A native of Liberty, he had lived in Jasper three years and had previously lived in Livingston. He was a carpenter by trade and specialized in cabinets. He also worked for Home Depot.

Survivors include his life companion, Katy Ryan of Jasper; sons, Larry Edward Ryan III of Kountze and Chance Matthew Ryan of Spring Branch; daughter, Lana Ellis of Jasper; brothers, Teddy Mercer of Tyler and Karl Ryan of Homer, Louisiana; sisters, Jewell Ryan and Barbara Beach, both of Homer, Louisiana; and ten grandchildren and two great-grandchildren.

Linda Dupuis

Linda Rose Dupuis, 68, of Mamou, Louisiana and a native of Ville Platte, Louisiana died Tuesday, January 20, 2015 in Lumberton after a short battle with cancer.

Funeral service was Saturday, January 24 at Lumberton Family Funeral Home in Lumberton. Burial will take place in L'anse Meg Cemetery in Mamou, Louisiana at a later date.

Survivors include daughters, Paula Watts and husband Joseph of Jasper and Phyllis Peeler and husband Chris of Lumberton; son, Jeff Guillory and wife Peggy of Lumberton; sister, Faye Landreneau of Reddell, Louisiana; and 12 grandchildren and two great-grandchildren.



Northview Baptist Church

5 Miles North on Hwy 92 • Pastor Joe Hinson
 Sunday School.....10:00 am
 Worship.....11:00 am
 Evening Worship.....5:00 pm
 Wednesday Prayer Service.....6:30 pm
 Children Class on Sunday & Wednesday Evening

John Steve Eppes, CPA

180 West Avenue O 385-3200 Silsbee
Do You Have Internal Revenue Service Problems?
 • Tax Liens • Tax Levies
 • Unfiled Tax Returns
 • Collection Problems • IRS Audits
WE CAN HELP
 35 Years of Experience • Monday - Friday

NISSAN OF SILSBEE

#1 IMPORT DEALER in SETX!

Dean Bernal
Owner

<h3>QUALITY PRE-OWNED</h3> <h2>2012 NISSAN ALTIMA</h2> <h1>ONLY \$99</h1> <p>PER MONTH</p>  <p>(Stk #14282A) Sale Price \$8,995 plus tax, title, license and doc. fees. Financed at 3% for 72 months, with \$2,000 down, with approved credit. See dealer for details.</p>	<h3>EVERYTHING MUST GO</h3> <h2>2011 HONDA ACCORD</h2> <h1>ONLY \$109</h1> <p>PER MONTH</p>  <p>(Stk #13920A) Sale Price \$11,998 plus tax, title, license and doc. fees. Financed at 3% for 84 months, with \$4,000 down, with approved credit. See dealer for details.</p>
<h3>2012 JEEP COMPASS</h3> <h1>ONLY \$129</h1> <p>PER MONTH</p>  <p>(Stk #1451A) Sale Price \$13,988 plus tax, title, license and doc. fees. Financed at 3% for 79 months, with \$4,000 down, with approved credit. See dealer for details.</p>	<h3>2011 RAM 1500 SLT LONESTAR EDITION</h3> <h1>ONLY \$239</h1> <p>PER MONTH</p>  <p>(Stk #13920A) Sale Price \$11,988 plus tax, title, license and doc. fees. Financed at 3% for 84 months, with \$4,000 down, with approved credit. See dealer for details.</p>

FINANCIAL ASSISTANCE

OFFICIAL EVENT HEADQUARTERS
NISSAN OF SILSBEE
 3480 Highway 96 Bypass
 Silsbee, TX 77656

THIS IS NOT A CHECK • VOID WHERE PROHIBITED
 EXPIRES 01/31/15

PAY TO: John Doe

AMOUNT: **\$2,000.00** US DOLLARS

NOTE: Financial Assistance Nissan Of Silsbee
 OFFICIAL SIGNATURE

005964 0634 0098184096

BRING THIS VOUCHER WITH YOU FOR IMMEDIATE REDEMPTION
 With \$12,000 minimum purchase. With approved credit. With credit scores of 750 or greater. Non negotiable. Void where prohibited. Voucher has no cash value. One voucher per pre-owned vehicle purchased. This is not a rebate. See dealer for details.

New work measures set for part-time county employees

Commissioners give OK for work hours and revised benefits to part-time and temporary employees.

By Daniel Elizondo
editor@silsbeebec.com

Commissioners voted for revised part-time and temporary employees of the county to be in compliance under the Affordable Care Act.

Human Resources Director Rose Stewart presented the discussion to commissioners on Monday. The revisions will go into effect on May 1, 2015.

Under the revisions, the county agreed to allow for a recommended six-month measurement period and a maximum of 29 work hours per week.

Shared employees throughout county offices drew concerns from commissioners on whether they could exceed the maximum amount of hours and potentially draw unem-

ployment or health benefits.

Stewart told commissioners that the recommendation of 29 hours per week came when policy says that employees would be able draw health benefits if work hours are at or exceed 30 hours per week.

Pct. 1 Commissioner "Nubbin" Cooper told the court he was concerned about temp employees becoming available for unemployment, and working in more than one department.

"My feelings are that we should prohibit part-time employees from working in one department and to go to another to get more hours," he said.

Cooper voted against the measurement, but it was approved in a 4-1 vote.

Also in the measurement, a

revised insurance policy and revised miscellaneous policy was approved.

Commissioners also approved of a 10 percent bond from developer Earl Frost to contractor T. Johnson Industries, Inc. & Texas Corporation for the development of Talpa Trail, Oak Ridge Park Subdivision in Pct. 4 in Lumberton.

Esther Scarborough, subdivision designee, told commissioners that the bond is being renewed for surety purposes, and everything remains the same.

Also approved was "Nubbin" Cooper as primary member to serve on Jefferson-Orange-Hardin Regional Transportation Study for 2015. Alvin Roberts was approved as the alternate

member.

In announcements, crime victims director Valerie Davis introduced two new employees that include Aimee Pearce of Sour Lake and Regan Perales of Votaw.

Commissioner Roberts also introduced new secretary Melanie Williams.

Other approvals included:
• Permission for Purchasing Agent Jackie Ellis to sell surplus inventory with Rene Bates Online Auctioneers.

• Permission for sheriff's office to purchase new police package vehicle with a cooperative purchasing program.

• Permission for Commissioner Ken Pelt to purchase a new vehicle with a cooperative purchasing program for Pct. 3.

• Permission for Commis-

sioner Chris Kirkendall to purchase two new motor graders with a cooperative purchasing program for Pct. 2.

• Permission for Hardin County Judge Wayne McDaniel to sign a contract prepared by KSA Engineers, with McDonald Municipal and Industrial for installation of four generators utilizing Hardin County round 2.2 GLO funding.

• Designated County Judge McDaniel as authorized signatory for checks claims list.

• Adoption of amendment to Resolution No. 3-14 to accommodate signatures of newly elected members of the court. The amendment is for the application for Victims of Crime Act grant funding approved on Feb. 10, 2014.

• Adoption of a third

amendment to Resolution No. 4-14, which is the application for VOCA grant funding approved on Feb. 10, 2014. The amendment will accommodate signatures of newly elected members of the court.

• Adoption of a third amendment to Resolution No. 5-14, which is the application for VOCA grant funding approved on Feb. 10, 2014. The amendment will accommodate signatures of newly elected members of the court.

• Adoption of amendment to Resolution No. 7-14 to accommodate signatures of newly elected members of the court. The amendment is for the application for Victims of Crime Act grant funding approved on Feb. 10, 2014.




1415 Hwy 96 Bypass • SILSBEE
385-5221

NEW 2014 CHEVY SILVERADO 1500 CREW CAB



\$27,498
Super Bowl SAVINGS \$9,387
#G277297 PLUS TT&L

NEW 2014 CADILLAC CTS



\$29,998
Super Bowl SAVINGS \$16,147
#4219033 PLUS TT&L

Super Bowl SAVINGS

ANY PRICE IN TEXAS!

NEW 2015 CHEVY EQUINOX



\$21,498 SAVE \$3,972
#2117276 PLUS TT&L

NEW 2014 BUICK VERANO



\$20,998 SAVE \$3,687
#4219033 PLUS TT&L

NEW 2014 CHEVY CRUZE



\$15,498 4 TO CHOOSE
#7349259 PLUS TT&L

385-5221 1415 Hwy 96 Bypass • SILSBEE
Shop www.cowboyautoplex.com

1) 2014 Chevy Silverado 1500 Crew Cab, #G277297, MSRP \$36,885, \$2,637 Cowboy Discount, \$1,750 Consumer Cash, \$2,000 Trade-in Allowance with 1999 or newer vehicle, \$1,000 Loyalty Allowance with 1999 or newer GM trade-in, \$1,000 Bonus Cash. 2) 2014 Cadillac CTS, #0176478, MSRP \$46,135, \$3,127 Cowboy Discount, \$4,000 Alternative Cash, \$2,000 Bonus Cash, \$2,000 CTS Bonus Cash, \$2,000 Loyalty Allowance with 2004 or newer GE trade-in, \$2,000 DBC Certificate. 3) 2015 Chevy Equinox, #2117276, MSRP \$25,470, \$1,722 Cowboy Discount, \$250 Consumer Cash, \$500 Bonus Cash, \$500 Farm Bureau, \$1,000 Loyalty Allowance with 1999 or newer GM trade-in. 4) 2014 Buick Verano, #4219033, MSRP \$24,685, \$1,187 Cowboy Discount, \$500 Consumer Cash, \$1,000 Bonus Cash, \$500 Farm Bureau Rebate, \$500 Loyalty Cash with '99 or newer GM trade-in. 5) 2014 Chevy Cruze, #7349259, MSRP \$19,590, \$1,092 Cowboy Discount, \$1,500 Consumer Cash, \$500 Farm Bureau, \$1,000 Loyalty Allowance with 1999 or newer GM trade-in. *See dealer for details. All financing are with lender approval. Art for illustration purposes only. Sale Prices subject to rebate availability.

Cowboy PRE-OWNED

<p>'07 DODGE GRAND CARAVAN Stk#5623.....</p> <p>'09 TOYOTA COROLLA XLE Stk#079.....</p> <p>'12 TOYOTA YARIS Stk#5591.....</p> <p>'11 CHEVY MALIBU LT Stk#556.....</p> <p>'11 MAZDA 3 TOURING Stk#092.....</p>	<p>2014 FORD F150 SUPER CREW PLATINUM ECOBOOST</p>  <p>\$44,900</p> <p>4X4 Rear camera, retractable running brds, heated/cooled dual pwr. leather bucket seats, pwr. rear slide glass, pwr. telescopic steering wheel, 20" polished alum. wheels. #5112</p>	<p>'12 NISSAN SENTRA SE Stk#248.....</p> <p>'14 CHEVY CRUZE LT Stk#090.....</p> <p>'14 DODGE CHARGER SE Stk#2857.....</p> <p>'13 NISSAN FRONTIER SV CREW CAB Stk#2857.....</p> <p>'14 CHEVY SILVERADO 1500 CREW CAB Stk#0842.....</p>
--	---	--

1415 Hwy 96 Bypass • Silsbee
(409) 385-1841
www.cowboyauto.com

2008 GMC SIERRA SLE CREW CAB



5.3 V8, running brds, spray-in bedliner. #6527
\$17,900

2009 GMC SIERRA SLE CREW CAB



5.3 V8, trailer tow, alloy wheels. #1812
\$18,900

2013 NISSAN JUKE SV



Pwr. bucket seats, alloy wheels. #0527
\$19,900

2012 CADILLAC SRX PREMIUM



Pwr. sunroof, pwr. leather memory/bucket seats. #6947
\$24,900

2014 BMW 320i



Only 17K
Pwr. leather bucket seats, alloy wheels, fac. war. #0234
\$25,900

2014 JEEP WRANGLER 4X4



4 DOOR
Polar Edition, Hard top, auto, fac. war, alloy wheels. #718
\$34,900

SALE PRICES GOOD THROUGH SATURDAY, JANUARY 31, 2015 - ALL PRICES + TT&L - ART FOR ILLUSTRATION PURPOSES ONLY

Tigers claim lead in District race

Wins over Hardin Jefferson and WOS move Tigers to 6th in State

The Silsbee Tigers finished the first round of District 24-4A play unbeaten, leaving Silsbee Head Coach Joe Sigler to pause and take time to reflect on this.

"I'm pleased to go through the first round of district play unbeaten," he said. "Anytime you can do that you can be proud. However, that was yesterday. Now you must improve to go through the second round."

He stated, "I keep asking them (the players), what do you want? It will not be achieved without work in the classroom and also on the court."

On Friday the team defeated West Orange Stark by a 79-64 score.

Dontre Thomas got the Tigers off to a fast start with eight points in the first quarter, Ricky Maze added five in the period. By the end of the quarter, Silsbee had a 22-15 lead.

Silsbee continued to hustle

and harass the Mustangs in the second period. Trajan Harris tossed in nine points in the second period and Michael McCain added five more as Silsbee outscored the Mustangs 46-32.

Harris and McCain tossed in five each in the third period and Kolten Mackey added four more as Silsbee fought off a Mustang challenge in the third period.

The Mustangs had their best quarter of the evening in the third when they outscored the Tigers 21-20.

This barely cut into the 14-point lead that the Tigers had at the half.

The rally was cut short in the fourth period. Mackey was able to score six more and Silsbee outscored the Mustangs 13-11 to claim a 79-64 victory.

Thomas and Mackey scored 12 points each, and both players had double figures in rebounds.

The high point man for

Silsbee was Harris with 14 points. Michael McCain finished the game with 13 points. Other Tigers who scored included Kalon Barnes with nine, Ricky Maze with seven, Bruce Newton with six, Travious Grubbs with four, and Sedrick Spearman with two.

Earlier in the week, the Tigers faced Hardin-Jefferson and Silsbee came away with a 78-63 victory.

This time, Michael McCain, a sophomore, took the lead for the Tigers. He hit for 16 points and attacked the basket. Kalon Barnes, a freshman, had a great game. Dontre Thomas played one of the most consistent games of all the players.

The key to the game was that Silsbee made 70 percent of its free throw attempts, hitting 30 of 43 and they also out rebounded the bigger Hawks team 46-30.

Silsbee trailed throughout the first quarter 19-15 and then trailed much of the sec-

ond quarter.

In the final minutes before the half, Silsbee forced a couple of turnovers and went on to claim a 38-34 lead at the half.

McCain had nine points during the second quarter comeback and Bruce Newton hit for six.

After the half, the two offenses cooled. Silsbee outscored the Hawks 14-12 in the third period to lead 52-46 as the game entered the final period.

During the fourth period, Sedrick Spearman, who had not scored in three quarters, found the range. He hit for seven in the fourth period.

Travious Grubbs, who had sat out a couple of games after receiving five stitches above his eye, was back in action and he scored six in the fourth quarter. By the end of the period, the Tigers offense was untracked. Silsbee scored 26 in the fourth to claim the victory by a final margin of 78-

63.

McCain led Silsbee with 16 points. Maze hit for 11, and Grubbs 10. Other Tigers who scored included Newton with eight, Spearman and Thomas each with seven, Harris with six, and Mackey with two.

Hardin-Jefferson, a team often considered to be the Tigers biggest rivals, have now lost six of the last seven

games between the two teams.

They were led by the sharp shooting Michael Saladin who hit for 18 points. Dylan Mays scored 13, Malek Bradley scored nine, Jameron Roberts and Brady Harkett each scored seven, Elijah Parquet scored six, and Leeland Rogers scored three.

By the end of the game Sils-

See TIGERS on PG. 4, SEC 2

SHS Wall of Fame nominations

The Silsbee Wall of Honor committee is now accepting nominations for the 2015 Silsbee High School Wall of Honor.

Nominations will be accepted until April 1. Nominees will be voted on April 15 and the reception to honor the recipients will be held at Silsbee High School from 5-7 p.m. before football game on Sept. 11.

Criteria for Wall of Honor* is as follows:

- Graduate at least 15 years
 - Good moral character
 - College scholarship**
 - All American**
 - All conference**
 - Professional athlete**
 - Olympian**
 - High school career
 - Six varsity letters**
 - All district or all state: 1,2,3 team or honorable mention**
 - State Champion**
 - Two letters of recommendation from coaches, teachers or administrators
 - Three letters of recommendation from former classmates or teammates.
- *must accomplish 3 of the 4 high school requirements or 1 of the college or professional requirements
- **Documentation must ac-

company nomination

This may be found in newspapers, archives, college sports info, pro sports info, yearbook, letters from former coaches, teachers, or ad-

ministrators.

The Wall of Honor committee will need current addresses and phone numbers (email if available) of all nominees.


Nominations need to be sent

to:

Wall of Honor
Silsbee Chamber of Commerce
454 North 5th Street
Silsbee, Texas 77656

HUNTIN' FOR BUCKS





benefiting Texas Outdoor C.H.I.L.D.
Challenged Hunters Involved in Living Dreams

February 6 & 7

Honky Tonk Texas

2389 Hwy 96 N • Silsbee

Washer Tournament • Auction • Dance

For more information contact
Larry Davenport 284-5818 or Donnie Gordon 550-6329

REFRESHMENT REMIX

25 WAYS TO RETHINK YOUR DRINK

Cherry Limeade	Diet Blackberry Limeade	POWERADE® Cranberry™ SPRITE™	Vanilla POWERADE® COKE™	Strawberry Vanilla DR PEPPER™
Grape Limeade	Diet Mango Limeade	Strawberry Lemon FANTA™ Orange	Cherry Vanilla COKE™	Cherry Pineapple DR PEPPER™
Strawberry Limeade	Blue Coconut Cherry SPRITE™	Vanilla Cream FANTA™ Orange	Blackberry Vanilla COKE™	Chocolate Cherry DR PEPPER™
Mint Limeade	Green Apple Vanilla SPRITE™	Vanilla Cream Root Beer	Cherry Lime COKE ZERO™	Vanilla Lime DR PEPPER™
Watermelon Limeade	Strawberry Vanilla SPRITE™	Raspberry Vanilla Root Beer	Peach™ Lime DIET COKE™	Cherry Lime DR PEPPER™



NEW Tossed & Sauced BONELESS WINGS

100% All-White MEAT CHICKEN

BARBECUE



BUFFALO



ASIAN SWEET CHILI



6 pc. **3.99**

12 pc. **7.79**

24 pc. **14.99**



America's Drive-In.

860 Hwy. 96 S. • Silsbee

385-4911 

TRY OUR SANDWICH PLATTERS

OR GIANT SUBS FOR SUPER BOWL PARTIES AND

And We'll Chip In THE CHIPS*



Don't Forget to Order Your Subway Cookies!

<p>SILSBEE 760 HWY 96 SO 409-385-7827</p>	<p>SILSBEE BYPASS 1005 HWY 96 409-385-5850</p>	<p>WOODVILLE 800 S MAGNOLIA 409-283-2396</p>
<p>LUMBERTON 325 N. MAIN ST 409-755-2241</p>	<p>KOUNTZE 645 S. PINE ST 409-246-2049</p>	



*Offer Good Thru February 1, 2015

Kountze ISD Honor Roll

FIRST GRADE

ALL A's
Sara Allen
Chandler Barwick
Michael Briones
Dawson Rolf
Hunter Courts
Colton Deters
Liam Duke
Lillian Eaves
Layne Elsea
Amber Floyd
Ana Gallegos
Brissa Garcia
Dorothy Goffinski
Skylar Hadnot
Courtney Haralson
Colt Holland
Tori Hollis
Kayli Holst
Jack Hutchinson
Clayton Hutson
Zane Martinka
Keyiona McDaniel
Cade McNeely
Daniel Mehl
Rusty Musselwhite
Devan Noten
David Norwood
Kaigen Parker
Kyla Parker
Reese Parrott
Dulce Ramos
Lakyn Richardson
Lyssa Sheffield
Jada Skipper
Rylan Smart
Kethan Swearingen
Breanna Taylor
De'Korian Thomas
Angela Turner
Jena Warden
Cami West
Hayden Williams
Mylee Williams
Kadence Wolfe
Angeleana Zandonatti

Trintin Glenn
Shealynn Griffin
Chase Jones
McKenzie Kamin
Kyle Kelley
Layne Ledoux
Brayden McCray
Jaydon McDonald
Zachary McDonald
Kannin McKeefe
Yazmin Mercer
Dylan Miller
Shawn Mills
Charles Moore
Grace Moore
Christian Musselwhite
Cooper Parsons
Aubri Phillips
Lana Reinhardt
Emma Shaw
Cody Stutts
Emma Sutterfield
Addison Thornton
Gracie Trick
Christopher Warren
Brayden Welch
Emory Westbrook
Zander Winfrey
Deacon Young

THIRD GRADE

ALL A's
Ariel Bass
Rachael Beverly
Zachary Blair
Jada Skipper
Rylan Smart
Kethan Swearingen
Breanna Taylor
De'Korian Thomas
Angela Turner
Jena Warden
Cami West
Hayden Williams
Mylee Williams
Kadence Wolfe
Angeleana Zandonatti

FIRST GRADE

A&B's
Damon Akbar
Madelyn Alsdurf
Logan Anderson
Billy Baird
Hailee Boone
Gabriella Bumstead
Carson Davis
Shelby Duplexchain
Hunter Enderle
Luke Ener
Dakota Haxby
Nehemiah Jackson
Madison Johnson
Abygaill Jordan
Alyssa Lovell
Neosha McMahon
Hope Oliphant
Kaygen Palmer
Jake Parsons
Madison Sage
Brennan Sellers
Zac Sells
Callye Siller
Ashley Swanson
Gary Wheeler

THIRD GRADE

A&B's
Michael Borowski
Katrina Boyett
Kevin Briones
Harley Brown
Aaron Bumstead
Rickey Davidson
Korben Davis
Sidney Dignon
Starlie Duke
Skylee Foster
Brandon Gallegos
Tegan Gonzales
Landon Grass
Kristian Hayes
Zachary Landry
Aiden Lockhart
Xoe Lockhart
Charlotte Milner
Brice Scheer
Kirstan Stanley
Landon Stephens
Ross Sterling
Heaven Swartout
Shelby Tousha
Kyle Vanslyke
Luke Voigtman
James Whiteside
Bret Wilson
Peyton Zimmerman

FOURTH GRADE

ALL A's
Zachary Blair
Reagan Carr
Dinah Coker
Sidney Dignon
Kailee Dotson
Hopelynn Mehl
Emily Pitman
Victoria Stuts
Kylar Swearingen
James Whiteside

FOURTH GRADE

A&B's
Makenna Bazinet
Rachael Beverly
Michael Borowski
Katrina Boyett
Kevin Briones
Harley Brown
TK Clemons
Jaycee Cooper
Rickey Davidson
Korben Davis
Starlie Duke
Emma Ener
Jaycee Foster
Skylee Foster
Landon Fuller
Brandon Gallegos
Alejandro Gonzales
Grace Hardin
Kristian Hayes
Kenzi Hough
Robert Jeffcoat
Audrey Jennings
Adreonna Johnson
Colby Johnson
Makayla Johnson
Trinity Kuna
Zachary Landry

Jadyn Langley
Skyla Letzke
Aiden Lockhart
Madison McClelland
Charlotte Milner
Nathaniel Petoskey
Pedro Ramos
Brody Renshaw
Brice Scheer
Kashari Sells
Mylee Smith
Kirstan Stanley
Landon Stephens
Kellum Sterling
Landon Sticker
Libbie Sutterfield
Jada Thompson
Luke Voigtman
Jillian Walters
Kyauna Yates
Peyton Zimmerman

FIFTH GRADE

ALL A's
Seth Anders
Elijah Carter
Derrick Fontenot
Elizabeth Guerrero
Demond Hamilton
Hayden Holland
Seth Kees
Jacy Lognion
Parker Martinka
Peyton McLaurin
Madison Parsons
Hunter Perkins
Trenton Phillips
Halle Post
Alexis Roth
Alex Smith
Hannah Stanley
Wyett Trick
Reese Turner
Aubrey Ueckert
Sarah Whittle

FIFTH GRADE

A&B's
Caleb Adams
Dakota Breaux
Bryce Baird
Madison Brothers
Jeremy Burchfield
Justice Crain
Riley Duplexchain
Kamryn Easinger
Mylee Estep
La'Narielle Fontenot
Kobyn Freeman
Bryan Gallegos
Madison Grissier
Sydney Grissier
Haley Hafford
Carli Herrera
Valery Herrera
Caleb James
James Lacy
Nova Mattix
Elijah McMahon
Robert Perez
Angel-Fabian Raya
Hunter Read
Kevin Richard
Evelyn Runkle
Sterling Tate
Dae' Shaun Thomas
Ashley Tucker
Dauson Venable
Bryce Welch
Dawson Weyler
Destiny White

SIXTH GRADE

ALL A's
Kashanti Adams
Lane Bevilacqua
Jaythan Davis
Jakob Delp
Logan Flowers
William Foster
Michael Gordon
Brooklynn Hale
Emma Manzer
Hailey Martinez
Todd Mayo
Seth Mehl
John Pruitt
Nathaniel Ringo
Raven Roberts
Abygaill Smart
Justin Stanley
Kourtlyn Tupper
Jenna Wilson

SIXTH GRADE

A&B's
Jacob Allen
Nolan Baxter
Alex Beal
Virginia Blackwell
Evan Carter
Dade Castille
Katelynn Cole
Jasmine Cooper
Logan David
Micah Depew
Leigh Eppes
Abigail Ford
Alana Gallaspy
Julia Griffin
Sarah Griffin
Zoey Helegda
Abbie House
Blake James
Holley Martinez
Emilie McGowan

Craig Moffett
Matti Overstreet
Raven Rascoe
Maria Rodriguez-Soto
Bailey Vonfeldt
Alleigh Wade
Brian Walters
Ely Whisenant
Whitney Williams
Amina Yates

7TH GRADE

ALL A's
Katlin Allen
Grace Allien
Brianna Arline
Tyler Carr
Caleb Carter
Kaitlyn Cherry
Christie Cormier
Raylyn Courts
Caleb Flowers
Izabella Freeman
Kaley Marshall
Jeremiah Matthews
Jillian Mcdonald
Cody Miers
Alexandria Miller
Tyeler Miller
Bryan Morgan
Harley Perkins
Easton Peters
Rebekah Seaman
Julian Silvestrini
Stormi Teel
Trinity West

SEVENTH GRADE

A&B's
Williams Binkley
Chandler Bowman
Karizma Breen
Kathrena Burge
Aubrey Burress
Cheyenne Camp
Jacob Campbell
Kathryn Coplen
Amanda Darby
Austin Everett
James Graham
Austyn Hoke
Christina Johnson
Samantha Keith
Abigail Martinka
Alison McGallion
Courtney Parrish
Kyle Peel
Lia Richardson
Rebecca Thomas
Lailah Wilburn
Alex Wright
Makayla Yeager

EIGHTH GRADE

ALL A's
Paul Anders
Cayson Beal
Mary Jo Bitong
Claudia Ford
Dana Jackson
Ashton Kappelman
Sheridan Kees
Christopher Langston
Jacob Murphy
Saniya Shahzad
Grace Tantillo
Kyler Thompson
Kaygan Vonfeldt
Abbie West
Kennedy Wheeler

EIGHTH GRADE

A&B's
Konnor Balance
Savannah Bunch
Allison Campbell
Bailey Chotigul
Claci Cloud
Destiny Francis
Javier Guerrero
Garrett Hall
Katelynn Harrington
Heaven Hayden
Carsyn Herrera
Jovan Hill
Breanna James
Mallory Jordan
Makayla Linn
Leanne Manuel
Brady Martinez
Jaxon Martinka
Cole Moore
Skyler Mordente
Dakota Peel
Juliana Peters
Cheyenne Platt
Hannah Poland
Jacqueline Sells
Shaylin Simmons
Cheyenne Tousha
Kayla Williams

NINTH GRADE

ALL A's
Sarah Arsement
Meagan Chevalier
Kennedy Flower
Da'shaidreonia
Fontenot
Alivia Jones
Jacqueline Warden

NINTH GRADE

A&B's
Cheyenne Anderson
Tabitha Bach

Jeremiah Barker
Korigan Bumstead
Caleb Campbell
Mary Caraway McNeely
Noah Carter
Koby Cummings
Sierra Day
Shelby French
Ayiana Gallaspy
Kendra Hall
Corben House
Jasmine James
Kaylee Ledoux
Kylee Martinez
Reagan Mathews
Teyonce McDaniel
Brittney McGallion
Kyras Odum
Alexis Orsot
Kelbi Powell
Sanjuana Quintero Villanueva
Jessica Rankin
Rachel Seaman
Mason Smith
Jade Vickery
Lemuel Walters

TENTH GRADE

ALL A's
Zachary Arsement
Cooper Coe
Miley Overstreet
Ashlyn Peters
Sarah Robins
Paige Smith
Mason Walton

TENTH GRADE

A&B's
Jacob Anders
Lena Darby
Reagan Dean
Nicholas Harris
Janette Mitchell
Carson Parrott
Draven Poplin
Macey Smart
Nicholas Trainer

ELEVENTH GRADE

ALL A's
Dionne Binkley
Makayla Lewis
Ashley McCullar
Joshua Mehl

ELEVENTH GRADE

A&B's
Dylan Ainsworth
Blake Anderson
Dalton Barras
Kylar Bumstead
Breanne Butcher
Taylor Clakely
Camry Clemons
Jaydon Cumigan
Ariel Denmon
Drake Gray
Adrianna Haynes
Trysten Hoke
Kerri Hoy
Zachary Lyons
Kristin Malone
Bailey Martin
Megan Murphy
Alexis Noel
Daniel Overstreet
Amber Ramsey
Noah Roehr
Madisen Smith
Cali West
Kaylee West

TWELFTH GRADE

ALL A's
Jakob Arsement
Megan Brottem
Summer Brown
Connie Cormier
Blake David
Jesseca Drake
Tanner Gruller
Josie Gunter
Kevin James
Brittany Long
Kennedi Mathews
Staci Richardson
Kade Shawver
Tori Smith
Alyssa Williams
Chad Young

TWELFTH GRADE

A&B's
Rebeka Andrus
Dustin Bevilacqua
Roxanna Chanek
Patrick Colton
Zoe Doiron
Celeste Durmon
Michael Greer
George Guy
Tyler Malone
Trevor McLendon
Cody Merchant
Deontra Morgan
Erika Nowlin
Dylan Smith
Casey Tousha
Alyssa Whittle
Baylee Woods

Lady Lions rally back in second half of season to win back-to-back games

The Kountze girls opened play in the second round of district play last week with a pair of wins over Deweyville and Warren.

On Friday, the Lady Lions dropped Deweyville by a 54-43 score.

This game was close at the end of the first period with Kountze leading 8-7. And then The Lady Lions took control of the game in the second quarter.

Tori Cleaver hit for five points and Kiara Cole added five more as the Kountze girls outscored their opponents 16-9 to lead 24-17 at the half.

Cleaver continued to power the Lions attack in the third quarter. She hit a three-point basket and scored seven in the third period.

Cole added five more and Camry Clemons four as the Lions had their best quarter of the game. They outscored Deweyville 22-13 to give the Lady Lions a 16-point lead at the start of the fourth period 46-30.

Kountze outscored their op-

ponents 18-14 in the fourth period.

Cole was the Lions high point woman with 14 points. She finished the game with a double-double. In addition to her 14 points, she had 13 rebounds.

Cleaver hit for 12 points. Clemons finished the game with 10 points, four steals, three assists and nine rebounds.

Other Lions who scored included Akashia Lowe with six, and Kennedi Mathews, Anastasia Depew and Alexis Orson each with four.

Earlier in the week, the Lions played Warren and Kountze and won the game by a 66-50 score.

Clemons hit for nine points in the opening period as Kountze jumped ahead 21-8. They upped that lead to 37-19 at the half.

Lowe got the hot hand in the second period. She hit a pair of three-point baskets and scored 10 before the quarter was over.

At the half, Warren found

themselves on the short end of the scoreboard.

During the second half, Warren rallied and outscored the Lions 31-29. At the end of the game, the Lions had a comfortable 66-50 victory.

Clemons was the high point scorer in the game with 31 points. Lowe hit for 14, and Cole scored 10.

The other Lions who scored were Danielle Carey with six, Cleaver and Depew each with two, and Matthews with one.

The Lady Lions had 25 two-point field goals in this game. They also made the pair of three-point shots. The Lions were six of 12 from the charity stripe.

At this point in the district race, Anahuac and Buna are tied at the top with records of 8-1. East Chambers (7-2) follows, next with Hardin (5-4), Kountze (3-6), Kirbyville (2-7), Warren (2-7), and Deweyville (1-8).

This week, the Lions will host Anahuac on Friday and they will play at Hardin on Tuesday.

Rebels in third place at halfway point

By Scott Loar

The Evadale Rebels find themselves in third place in district 24-2A after playing its first half games with a 4-2 record.

The Rebels were unbeaten in league play before two

losses this week to league leading Big Sandy (6-0), and West Hardin (5-1), which dropped Evadale to third place.

"We had two tough games last week as we faced the no. 1 team in the state and then a team that we match up well

with in West Hardin," Coach Keith Talbert said. "We are still in a position to make a run at the playoffs, but we will need to get even better as we make our way back through the district."

Evadale hosted Big Sandy (23-3) and who had beaten teams as large as 5A in tournament play earlier in the year.

The Wildcats came out red hot and led the Rebels by 16 points after the first quarter 24-8. The Rebels scored better in the second quarter, but so did Big Sandy who took a 49-22 lead into the locker room at halftime.

The Wildcats doubled up on the Rebels in scoring in the third period to increase their lead to 69-32 and won the game over the Rebels by the score of 86-47.

Tyler Torres and Coy Williams led the Rebels in scoring with 10 points each while Logan Hare had eight points and Brady Griffin added seven.

The Rebels traveled to West Hardin tied at 4-1 with second place up for grabs to the winner. Evadale opened well as they led 17-14 after the first period and they maintained the three-point lead at the half 30-27.

Evadale only scored seven points in the third period which would prove to be costly for the Rebels who fell behind 45-37 with only one quarter remaining.

In the end, the Oilers defeated the Rebels 66-53.

See REBELS on PG. 4, SEC. 2

Hundreds of GUNS
Pallets of AMMUNITION in stock
BUY • SELL • TRADE
Off southbound freeway at The Evadale Vidor exit
43460 U.S. Hwy 96 • 409-276-1707
Mitchell Saw & Supply
www.mitchellsawandsupply.com

Family Catfish Special
Open Mon-Thurs 11-8 • Friday 11-9 • Saturday 11-8
TO-GO ONLY
16 Pc Catfish
2 family sides and a dozen hush puppies **\$19.99** With coupon
Cut Coupon
Captain Ron's Seafood
300 South Pine Street
Kountze, TX 77625
246-3700
Fax 246-3971

Broussard's
Established 1889
"Your Family of Funeral Directors
For Five Generations"
530 W Monroe 246-3466 Kountze

PLUMBING SERVICES
Residential • Commercial
246-4740 • 386-1300
755-1444 • 981-9134

CRANE RENTAL
409-246-8448 - Office
409-201-3800 - Cell

Hardin County Tractor, Inc.
www.hardincountytractor.com
1400 S. Pine St. • Kountze
246-8500
KIOTI DIXIE CHOPPER HUSLER

Henry A. Coe, III
Attorney At Law
Courthouse Square • Kountze
246-3424

CitizensBank
1055 S. Pine 617-0400 Kountze
115 Hwy 326 S 981-1600 Sour Lake
FDIC EQUAL HOUSING LENDER
www.citizensbanktx.com

Younger Years
Child Care Learning Center
State Certified Educational Curriculum Open Enrollment For All Ages
615 Creekmore • Silsbee 385-7887
719 South Main • Lumberton 755-1195

Good Luck Lions!
KOUNTZE MINI STORAGE
James Read, Owner
409-246-4366
1755 N Pine St (Hwy 69) Kountze

A Proud Kountze Supporter
John Steve Eppes
Certified Public Accountant
180 W Ave O • Silsbee
385-3200

Worsley
KOUNTZE DENTAL CENTER
Big City Technology, Small Town Care
530 S. Pine St.
Kountze 77625
KountzeDentalCenter.com
(409)246-4777

SUBWAY
Kountze • 645 S Pine St
246-2049
Silsbee 760 Hwy 96 S 385-7827
Lumberton 325 N Main St 755-2241

Kountze Family Medicine Clinic
Jana M Winberg, MD PA
Missy Campbell, CFNP
345 S Pine St Kountze
246-1014
kountzefamilymed.com

The Butler Law Firm
Gary Butler
Stewart Butler
1035 S. Redwood • Kountze
246-3600

Dallas J. Barrington
Attorney at Law
1100 Pecan St • Kountze
246-3912

Express Your Appreciation By Supporting These Local Businesses

WE want YOU to know your status...stay informed!
FREE HIV • HEP C
HERPES
SYPHYLLIS
CHLAMYDIA
GONORRHEA
Screening To The Public!
T.A.N. (Triangle AIDS Network)
1495 N. 7th Street • Beaumont
For more information, please contact 832-8338 ext: 253 or 229
Email: cleen@tanbmt.com or Clay@tanbmt.com

Lions overpower district foes after fall into second place

The Kountze Lions have completed the first round of league play and continue to sit in second place in District 23-3A.

After the games last week, Coach Duane Joubert stated that his team shot the ball pretty well on Friday against Deweyville. As a team, Kountze scored 42 points in the first quarter but stopped pressing after the first quarter.

The Lions then went into a 2-3 zone and began working on different parts of their offense.

By the half, Kountze had tossed up 62 points and had a 62-11 lead over Deweyville. The Lions defeated Deweyville 108-32.

Kountze went on to outscore their opponents 28-9 in the third period and 18-12 in the fourth.

Grayland Arnold hit for 13 points during the first quarter of the game. He added two more in the second and 10 in the second half to finish the game with 25 points.

He was the high point man, but Kountze had four others in double figures.

TJ Stanford, who hit for four three-pointers in the first two periods, finished the game with 20 points. Jaydon Cunigan, who had six in the third period, was in double figures with 10. Michael Cole, who scored in every quarter, finished the game with 14 points. Henry Barnes hit for 11 for the Lions.

Other Lions who scored included Jeremiah Barker with nine, Justin Harper with eight, Deontre Morgan with seven, and Dallion Edwards with four.

The Lions hit for 38 two point field goals and 10 three pointers. They made 2 of 4 free throws.

LIONS 91 WARREN 48

Earlier in the week, the Lions played Warren and won that game by a 91-48 score.

This time, Harper was the high point man with 24 points. He came out hot and scored 10 points in the opening quar-

ter when Kountze jumped ahead 26-8.

The Lions then hit for 30 in the second period when they upped their lead to 56-27 at the half. Eight different Lions scored in the second period.

After the intermission, Kountze had 21 in the third period. Harper scored six as they outscored their opponents 21-13 to lead 77-40 as the two teams entered the final quarter.

Then Kountze coasted to the 91-48 victory.

In addition to the 24 by Harper, Cunigan hit for 15, Arnold scored 10, Barnes scored 11, Stanford scored seven, Edwards and Cole each scored six, Barker and Morgan each scored five, Dontre Carey scored two.

No. 7 Kountze (20-6, 6-1) remain behind No. 6 Buna (20-7, 7-0) in district and state polls.

East Chambers (5-2) follows the Lions in third place. The Buccaneers are followed by Kirbyville (4-3), Hardin (3-

4), Anahuac (2-5), Warren (1-6), and Deweyville (0-7).

Friday the Lions will host Anahuac and then they will travel to Hardin on Tuesday.

The Computer Shack

COMPUTERS • LAPTOPS
CELL PHONES • TABLETS

Repairs • Upgrades • Networking
On-Site • New and Used

385-1100

Across from R&W Pawn Shop • Silsbee



YOUR Bank for all Reasons

Banking With People You Know

Citizens Bank gives you banking security and is sensitive to your individual needs. Citizens Bank will help meet your present and future needs in business and personal banking.



Rosie Thulin
New Accounts Representative
18 Years with Citizens Bank

Business and Personal
Checking • Savings
• CDs • IRA • Direct Deposit
Safe Deposit Box

Stop by Today. We're Always At Your Service!

Citizens Bank

1055 S. Pine • Kountze
617-0400

115 Hwy. 326 • Sour Lake
981-1600



www.citizensbanktx.com



EJMSMS Lady Tigers sweep Bridge City in basketball

The Silsbee Middle School Lady Tiger basketball teams swept Bridge City Thursday night.

The 7th Grade B team started the night with a close one, winning 11-10 over the Lady Cardinals.

Elianna Auer was the high scorer with five points. Emily Benoit, Brianna Collins and Lydea Whitmore scored two points each.

The 8th Grade B team won their game 14-9.

Alexis Baltrip was the lead-

ing scorer with six points while Tatiyana Davis scored four, and Savannah Shoulders and Kaniesha Lockett scored two each.

In the third game of the night, the 7th Grade A team defeated Bridge City, 25-15.

Miy'Joi Hill had nine points for the Lady Tigers. Kaneisha Brydson scored eight points while Alaiiah Henry and Akira Ray scored four each.

In the final game of the night, the 8th Grade A team rolled over the Lady Cardi-

nals, 39-10.

Dakota Matthews was the leading scorer for the team with 15 points. Emery Maze added 10 points, Cidacia Clifton and Brandis Bass scored six each and Brianna Williams scored two. Sydni Whitted led the team in assists.

The Lady Tigers will travel to West Orange next Thursday to take on the Lady Stallions and then finish up the season with their final game at home on Feb. 2 against Orangefield.



USED CARS

1211 Hwy 96 N • Silsbee

895-3800

LOW PRICES GUARANTEED

2014 FORD FOCUS SE #7311P #7296P #7306P #7307P #7308P \$209 Monthly WAC (1)	2013 TOYOTA CAMRY #7270P #7238P \$216 Monthly WAC (2)	2013 HYUNDAI SONATA GLS #7226P #7227P \$177 Monthly WAC (3)	2014 KIA FORTE LX #7304P #7303P #7310P #7302P #7300P #7309P \$211 Monthly WAC (4)	2013 FORD FIESTA #7333P \$175 Monthly WAC (5)	
2007 FORD EDGE SEL PLUS #34033A \$10,998 +TT&L	2011 NISSAN ALTIMA 2.5 S #81105A \$11,923 +TT&L	2014 NISSAN VERSA S #7344P \$12,596 +TT&L	2013 HYUNDAI ELANTRA GLS #7260P \$12,799 +TT&L	2014 FORD FIESTA SE #7334P \$12,899 +TT&L	2013 TOYOTA COROLLA L #7320P \$12,991 +TT&L
2013 TOYOTA COROLLA L #7322P \$12,998 +TT&L	2013 MAZDA3 i SPORT #7313P \$13,299 +TT&L	2014 CHRYSLER 200 LX #7335P \$13,391 +TT&L	2013 TOYOTA COROLLA LE #7321P \$13,399 +TT&L	2010 FORD EDGE SE #7290A \$13,461 +TT&L	2013 NISSAN SENTRA S #7259P \$13,498 +TT&L
2014 FORD FIESTA SE #7315P \$13,499 +TT&L	2013 HYUNDAI ELANTRA #7299P \$13,499 +TT&L	2014 CHEVY SONIC LT #7337P \$13,644 +TT&L	2011 FORD ESCAPE LIMITED #7241A \$13,999 +TT&L	2013 NISSAN SENTRA SL #7336P \$14,499 +TT&L	2014 CHEVY CRUZE LT #7298P \$14,991 +TT&L
2012 NISSAN ALTIMA 2.5 S #38009A \$15,834 +TT&L	2014 VOLKSWAGEN JETTA #7340P \$15,892 +TT&L	2013 FORD FUSION SE #7319P \$16,490 +TT&L	2013 FORD FUSION SE #7283P \$16,993 +TT&L	2014 FORD FUSION SE #7293P \$16,499 +TT&L	2013 NISSAN ALTIMA 2.5 #7353P \$16,733 +TT&L
2014 FORD MUSTANG V6 #7258P \$17,870 +TT&L	2014 SCION TC BASE #45870C \$17,891 +TT&L	2014 KIA OPTIMA LX #7287P \$17,995 +TT&L	2014 FORD ESCAPE SE #7256P \$17,999 +TT&L	2014 KIA OPTIMA LX #7285P \$17,999 +TT&L	2007 GMC YUKON SLT #41707B \$18,496 +TT&L
2014 FORD MUSTANG V6 #7251P \$18,999 +TT&L	2014 FORD MUSTANG #7250P \$19,777 +TT&L	2013 TOYOTA RAV 4 LE #7330P \$19,879 +TT&L	2014 FORD TAURUS LIMITED #7352P \$21,074 +TT&L	2013 TOYOTA VENZA XLE #7323P \$21,849 +TT&L	2012 JEEP GRAND CHEROKEE Laredo #7220B \$22,749 +TT&L
2013 NISSAN TITAN SV #7279P \$23,950 +TT&L	2013 NISSAN PATHFINDER S #38396A \$23,990 +TT&L	2014 DODGE RAM 1500 SLT Quad Cab #7348P \$24,798 +TT&L	2013 FORD F150 XLT #7344P \$25,599 +TT&L	2013 TOYOTA 4RUNNER SR5 #7289P \$26,165 +TT&L	2013 FORD F150 XLT #7288P \$28,999 +TT&L

* (1) 2014 Ford Focus, Sale Price \$15,994 +TT&L, \$2,000 down, \$209 monthly, 84 months @ 4% WAC. (2) 2013 Toyota Camry, Sale Price \$16,474 +TT&L, \$2,000 Down, \$216 Monthly for 84 months @ 4% WAC. (3) 2013 Hyundai Sonata GLS, Sale Price \$12,798 +TT&L, \$2,000 Down, \$177 monthly for 84 months @ 4% WAC. (4) 2014 Kia Forte LX, Sale Price \$16,131 +TT&L, \$2,000 Down, \$211 monthly, 84 months @ 4% WAC. (5) 2013 Ford Fiesta, Sale Price \$11,938 +TT&L, \$175 monthly, \$2,000 down, @ 4%, for 72 months WAC.

Silsbee girls play better but lose to HJ and WOS

The Silsbee girls basketball team may have played better this week than they have in recent weeks, but the team still suffered the same fate, a couple of losses.

Silsbee played Hardin-Jefferson a very good game on Tuesday before losing 43-36.

The Lady Tigers led at the end of the first quarter 11-8. Ashlyn Martin led the way with six points and Eranishia Carmener hit for five in the opening quarter.

Then Silsbee upped that lead to six at the half when they outscored HJ 16-13 in the second period.

Martin had seven in the second quarter.

The Lady Tigers suffered a set back during this game when Donnish Smith broke her nose and now she will be out for the rest of the season.

After the half Hardin-Jefferson got hot. They outscored the Tigers 11-4 in the third period to take a 32-31 lead at the

end of the third period.

Silsbee trailed by only one at the start of the fourth period. HJ slowly pulled away from them to claim the 43-36 victory.

The Lady Tigers have a young team this year and they are positioning themselves well to be a contender next season.

Martin was the high point player for Silsbee. The freshman finished the game with 13 points. Carmen, a sophomore, finished the game with 10.

Other Lady Tigers who scored included Makenzie Bertrand with five, Shalayna Hudson, a senior had three points, freshman Carley Jones and Quintessa White each with two, and Smith with one.

Before breaking her nose, Smith had seven blocked shots and 10 rebounds in the game. Carmen finished the game with 11 rebounds.

On Friday, the Lady Tigers played West Orange-Stark.

This time, Silsbee fell behind in the first period 26-13. They were never able to get back into the game after falling behind.

The Lady Tigers played two competitive quarters. In the second, Shalayna Hudson who had 12 in the first half and hit for six in the second period. She had her biggest offensive game in a long time with 18 points in the game.

Silsbee scored 17 in the second period, but went to the half trailing 44-30.

WOS outscored the Tigers 22-11 in the third period, and then Silsbee came back to play a 15-16 quarter in the fourth.

The end result was a 82-56 win for WOS.

Hudson led the Tigers in scoring with 18 points. Car-

See SHS on PG. 6, SEC. 2



Photo by Danny Reneau/Silsbee Bee
Quintessa White drives the ball up court during the final seconds of the Tigers loss to Orangefield on Tuesday. The Lady Tigers have shown steady improvement during the later stages of the season. Tuesday the Lady Tigers trailed 69-58 with only seconds left in the game but the team was still hustling.

TIGERS

From Section 2, Page 1

bee had made 17 two-point field goals and four three-point shots. They were 30 of 43 from the field.

HJ made 15 two-point shots and four three-pointers. They

made 21 of 32 free throws.

After the game, Coach Siger stated, "I was pleased with the overall effort because HJ controlled the game until the final minute of the first half. Then we got a few steals and they never recovered."

He also indicated that he missed playing the game at Ford Park. He says the small

gym environment at HJ leads to a lot of things that would not have happened at Ford Park.

This week the Tigers who are now 21-4 this season and ranked number six in the state will play Hamshire Fannett on Friday and at Bridge City on Tuesday.

Two Hardin County officials named to SETRPC board

The South East Texas Regional Planning Commission (SETRPC) recently hosted its 43rd Annual Meeting on Wednesday, January 21, 2015, at 6:30 pm. The Annual Meeting was held at the City of Beaumont Event Centre.

The SETRPC is a voluntary association of local governments established in June 1970 that includes Hardin, Jefferson and Orange Counties.

SETRPC promotes intergov-

ernmental cooperation and coordination, and provides a forum for the discussion and study of area issues.

Meeting highlights included the installation of SETRPC Officers for 2015 as follows:

Mayor Fred Williams, City of Kountze, President

Mayor Kirk Roccaforte, City of Bridge City, 1st Vice-President

Commissioner Eddie Arnold, Jefferson County, 2nd Vice-President

Commissioner Chris Kirkendall, Hardin County, 3rd Vice-President

Commissioner David Dubose, Orange County, Treasurer

Mayor Rebecca "Becky" Ford, City of Bevil Oaks, Secretary

In addition, two Lamar University students were presented scholarship awards.

Ms. Allexus McLeod was the recipient of the Don Kelly Scholarship Award in Social Work, and Mr. Mason Gardner was the recipient of the Mayor Frances K. Monk Scholarship in Public Service.

For additional information, please contact Shaun P. Davis, Executive Director, at 409-899-8444 ext. 6041 or email sdavis@setrpc.org.

Legal Notices

Notice is hereby given in accordance with the terms of the provisions of the Texas Alcoholic Beverage Code that Midway Stores, Inc. d/b/a Midway #23 has filed application for a Wine Only Package Store Permit and Beer Retail Dealer's Off-Premise License. Said business to be conducted at 400 Hwy. 105 East, Sour Lake, Hardin County, Texas 77659.

Owner: Midway Stores, Inc. Naresh K. Mittal, Pres. Pirtal Singh, Vice Pres./Sec. Manjeet Singh, Vice Pres.

REBELS

From Section 2, Page 2

Torres led with 13 points, Hare contributed 12, Griffin added eight and Williams had six points.

The Rebels will host the Colmesneil Bulldogs (2-4 in Dist. 24-2A) on Tuesday before traveling to Port Arthur to take on winless Bob Hope Academy (0-6) on Friday.

"We still control our own

destiny," Talbert concluded by saying. "We have already defeated our next four opponents and we just need to take care of our own game as we finish out the season. We will get another shot at Big Sandy and West Hardin and we will see if we can change the outcome and improve our standings in the playoffs."

MATSIKO
WORLD ORPHAN CHOIR
A CHOIR OF INTERNATIONAL CHILDREN'S NETWORK

Sunday, February 1
2:30 PM
Admission is Free

International Children's Networks Mission is to provide as many of our world's 600 million orphaned and at-risk children with a sponsorship for a complete education through their nation's highest university or vocational levels.

Good Shepherd Baptist Church
3700 FM 92 - 3 Miles N of Silsbee 385-3373

LONE STAR
INDOOR GUN RANGE

Call For Next Concealed Handgun Class Date

5-25 yard pistol lanes • 4-50 yard rifle lanes
\$15 Rental • \$10 gun rentals • Machine Gun Rental
Gift Certificates Available

4940 Hwy 69 S **755-4867** Lumberton
Hours: Tues-Fri 10-7 • Sat 10-6
www.lonestargunrange.net

D. Anderson
Construction, Inc.
From the Beach to the Lakes...Since 1978

Septic & Aerobic Systems
• Installation and Repairs • Maintenance Contracts
• Certified Service Department

NSF "A Flush Beats A Full House!"
CLEARSTREAM 385-4506

Suzanne Barfield
Real Estate Agent & Broker
409-385-2601

I've been here for 45 years, helping with your family's real estate needs - selling or buying
I'm Still Here - Ready To Work For You.

Barfield Real Estate, Inc.
1550 Hwy 96 South • Silsbee, Tx

NEWS to You

Find out everything you need to know in your newspaper.

POLITICS • CRIME • SPORTS • FINANCE • TECHNOLOGY
MEDICINE • THE ARTS • LITERATURE • EDUCATION • TAXES

Only **\$24⁰⁰** per year
or **\$34⁰⁰** for 2 years

NAME _____
ADDRESS _____
CITY _____ STATE _____ ZIP _____
PHONE# _____

Mail To: The Silsbee Bee
P.O. Box 547 Silsbee, TX 77656
or Call 385-5278 to Subscribe by credit card

*Hardin, Jasper & Tyler County Residents

Welcome Your New Arrival In Style

Save on oh-so comfortable and stylish clothing and more to pamper your little one.

Save 15% Off
Your Next Total Purchase
*Excludes Hobby Zone

Don't Forget To Check Out Our
HOBBY ZONE
All the top brands available Traxxas, Associated, HPI and more!

About Kids
Consignment Boutique
Infants • Children • Maternity • Juniors • Womens

900 S. Main, Ste 956 Lumberton 751-6580 M-W-F: 10-6 T-Th 10-7 & Sat 10-4

PAYNE'S

Wrecker Service, Inc. • Body Shop, Inc. • Mechanical Shop

FREE RENTAL CAR with Body Work

1310 Hwy 327 E • Silsbee, TX 77656
(409) 385-3277
We're Pulling For You!

Lady Rebels closing in on district title

By Scott Loar

The Evadale Lady Rebels (23-4 in Dist. 24-2A) have risen in the state 2A poll to no. 8, but Coach Robert Hollyfield has his team focusing much closer to home as they are now just a game away from clinching at least a tie for the district championship.

"Our first goal is to win district, that just sets the stage for the best possible path we could have for the playoffs," Hollyfield said. "With last week we are 8 and 0 and we have the championship in our sights, but no one is just going to give it to us, so we will continue to play hard and chal-

lenge ourselves to play better each and every time that we play."

Evadale hosted Big Sandy last Tuesday and this year they have been the Lady Rebels toughest competitors.

The Lady Rebels started the game strong and never looked back as they won 63-42.

In the game, Evadale scored at least 14 or more points in four quarters while allowing 10 or less in three of the four periods.

Haleigh and Hanna Oldbury did the most damage as Haleigh scored 12 points and Hanna added 11. Micheala Terry had nine points and Erin Bertrand had seven.

Evadale completely over-

whelmed the Lady Oilers at West Hardin winning by the score of 75-20. The Lady Rebel defense did not allow more than nine points in any quarter and held the Lady Oilers scoreless in the first period.

The Lady Rebels had one of their best offensive quarters of the season as they opened the game scoring 33 points.

Terry had 17 points, Hanna Oldbury had 15 points and five steals, Savannah Richardson who has been out with an injury, returned to form by scoring 11 points, Haleigh Oldbury had 10 points, Wendy Williams added eight to the cause.

With only four games re-

maining and only one challenging team left on the schedule in Colmesneil, the Lady Rebels seem destined to once again hoist the district championship trophy and be the no. 1 seed from the district in the playoffs.

The Lady Bulldogs from Colmesneil will be in Evadale on Tuesday and then the Lady Rebels must travel to Port Arthur to play the Bob Hope Academy.

Senior night will be on Feb. 6 when Hull-Daisetta is the opponent and the season will conclude at Sabine Pass on Feb. 10.

Cardinals Fall to SFA

Lamar men suffer first home loss of 2014-15 season

BEAUMONT, Texas – Senior Anthony Holliday scored all of his game-high 25 points in the second half, but Lamar was unable to overcome a 52-percent shooting performance in the final 20 minutes by Stephen F. Austin. The Cardinals fell to SFA, 82-65, falling to 10-10 on the year, and 4-4 in Southland Conference play. The loss also marked the teams first set back at home (8-1) in 2014-15.

"Stephen F. Austin is a very talented basketball team," said head coach Tic Price. "We didn't come out focused tonight. You can't get out to a slow start, and have the amount of turnovers against a team like that. SFA will make you pay, and that is what happened."

"We didn't finish the defense off with rebounding, and we turned the ball over 19 times. I thought we lost our poise early in the game. Normally, we have an advantage with our bench outscoring the opponents, but tonight we got outplayed in that area too," added Price.

The Cardinals finished the night a solid 20-of-46 (.435)

from the field, but were hurt by 19 turnovers. The Lumberjacks cashed in on nearly every miscue, scoring 26 points off the 19 miscues. Of the 'Jacks first 19 points, 17 came by way of turnovers.

Lamar also got out-rebounded, 42-33, by the defending conference champions.

Although the Cardinals managed to outshoot their guests, SFA shot 52 percent in the second half, and 26-of-65 (.400) for the game. Senior Jacob Parker led the 'Jacks with 20 points and 12 rebounds.

SFA jumped out to a 9-0 lead and never trailed in the contest. The 'Jacks pushed the lead to 13 points, 19-6, before the Lamar defense was able to settle down. The score remained the same for the next three minutes of game time before either team would score. The two teams rotated baskets over the course of the next 4:30.

The Cardinals cut the deficit to eight points on a Kevin Booze layup, but SFA responded with another run, including a basket at the buzzer

to push the lead to 16 at half-time.

It was more of the same in the second half as Lamar could get no closer than 11 points. The Lumberjacks pushed their advantage to as many as 22 points, before Lamar cut the score to the final deficit.

Holliday continued his strong performance posting his fifth 20-point effort since the start of conference play.

Senior Tyran de Latibeaudiere added 10 points on 4-of-6 (.667) shooting. He also pulled down five rebounds and blocked five shots. Junior LeMon Gregory ended the night with 10 points on 4-of-5 (.800) shooting.

The Cardinals return to action Saturday when they face Abilene Christian. The game against the Wildcats is slated to tip off at 6 p.m. from the Montagne Center.

Silsbee 7th graders overpower Bridge City

The Silsbee 7th grade boys basketball team traveled to Bridge City on Thursday night.

The 7th grade B team tied 14-14.

The Tigers were led by Dylan Colvin with seven points, Dennis Delapena with three points and Joshua Thompson with three points.

The 7th grade A team won 54-27.

The Tigers were led by Chris Martin with 15 points, Javonta Hunt with 14 points

and Dralyn Taylor with 13 points.

8th grade B team lost hard played game to the Bridge City Cardinals, 25-26.

LeJawan Williams had five points, Nick Wright, Dalton Avery, and

Jerrick Fontenot all added four points each.

The 8th grade A team won 61-21.

They were led by Devon McCain with 22 points and Jordyn Adams with 17.

Evadale Junior High Rebels

By Scott Loar

Last weekend the Evadale 8th grade boy's team participated in the Saint Anne's tournament in Beaumont. The junior high teams attend this tournament almost every year.

In their first game, the Rebels defeated the host team Saint Anne's 41-29. They then defeated Bridge City by the

score of 45-34 in the semifinal game.

They faced off against Saint Anthony's in the championship game and fell just short of winning the championship losing 34-28.

This is the first game that the 8th grade boys have lost in nearly two year of junior high basketball.

Nunn's Motor Cars

505 S. 4th (Behind Brookshire Bros) • Silsbee

CALL TODAY - RIDE TODAY

<p>'02 Mercedes Benz.....\$3,995</p> <p>'03 GMC Envoy.....\$3,995</p> <p>'03 Lincoln LS.....\$4,995</p> <p>'03 Cadillac CTS.....\$4,995</p> <p>'95 GMC Sierra 1500.....\$3,500</p> <p>'96 Ford T-Bird.....\$1,995</p> <p>'99 Jeep Grand Cherokee.....\$2,995</p> <p>'00 BMW 525 I.....\$4,995</p>	<p>'03 Honda Accord EX.....\$4,995</p> <p>'01 Buick LeSabre.....\$5,195</p> <p>'02 Chrysler PT Cruiser.....\$2,995</p> <p>'00 GMC Regency Van.....\$4,995</p> <p>'00 Honda Accord EX.....\$3,100</p>
---	---

Cash Specials

Buy - Sell - Trade

409-554-6738/409-373-2024

Se Habla Espanol

Follow Us On Facebook / Nunn's Motor Cars

In House & Bank Financing • CONSIGNMENTS WELCOME

Legal Notices

NOTICE OF RECEIPT OF APPLICATION AND INTENT TO OBTAIN AIR PERMIT RENEWAL

PERMIT NUMBER 689

APPLICATION TXI Operations, LP, has applied to the Texas Commission on Environmental Quality (TCEQ) for renewal of Air Quality Permit Number 689, which would authorize continued operation of a Concrete Batch Plant located at 2100 West Martin Luther King Jr Drive, Silsbee, Hardin County, Texas 77656. This link to an electronic map of the site or facility's general location is provided as a public courtesy and not part of the application or notice. For exact location, refer to application. <http://www.tceq.texas.gov/assets/public/hb610/index.html?lat=30.355452&lng=-94.196075&zoom=13&type=r>. The existing facility and/or related facilities are authorized to emit the following air contaminants: particulate matter including (but not limited to) aggregate, cement, road dust, and particulate matter with diameters of 10 microns or less and 2.5 microns or less.

This application was submitted to the TCEQ on December 29, 2014. The application will be available for viewing and copying at the TCEQ central office, TCEQ Beaumont regional office, and the Silsbee Public Library, 295 North 4th Street, Silsbee, Hardin County, Texas, beginning the first day of publication of this notice. The facility's compliance file, if any exists, is available for public review in the Beaumont regional office of the TCEQ.

The executive director has determined the application is administratively complete and will conduct a technical review of the application. In addition to the renewal, this permitting action includes the incorporation of the following authorizations or changes to authorized facilities related to this permit: alterations and amendments. The reasons for any changes or incorporations, to the extent they are included in the renewed permit, may include the enhancement of operational control at the plant or enforceability of the permit. For more information about this permit application or the permitting process, please call the Public Education Program toll free at 1-800-687-4040. **The TCEQ may act on this application without seeking further public comment or providing an opportunity for a contested case hearing if certain criteria are met.**

PUBLIC COMMENT You may submit public comments, or a request for a contested case hearing to the Office of the Chief Clerk at the address below. The TCEQ will consider all public comments in developing a final decision on the application. **The deadline to submit public comments is 15 days after newspaper notice is published.** After the deadline for public comments, the executive director will prepare a response to all relevant and material, or significant public comments. Issues such as property values, noise, traffic safety, and zoning are outside of the TCEQ's jurisdiction to address in the permit process.

After the technical review is complete the executive director will consider the comments and prepare a response to all relevant and material, or significant public comments. If only comments are received, the response to comments, along with the executive director's decision on the application, will then be mailed to everyone who submitted public comments or who is on the mailing list for this application, unless the application is directly referred to a contested case hearing.

OPPORTUNITY FOR A CONTESTED CASE HEARING You may request a contested case hearing. The applicant or the executive director may also request that the application be directly referred to a contested case hearing after technical review of the application. A contested case hearing is a legal proceeding similar to a civil trial in state district court. Unless a written request for a contested case hearing is filed within 15 days from this notice, the executive director may act on the application. **If no hearing request is received within this 15 day period, no further opportunity for hearing will be provided.** According to the Texas Clean Air Act § 382.056(o) a contested case hearing may only be granted if the applicant's compliance history is in the lowest classification under applicable compliance history requirements and if the hearing request is based on disputed issues of fact that are relevant and material to the Commission's decision on the application. Further, the Commission may only grant a hearing on those issues raised during the public comment period and not withdrawn.

A person who may be affected by emissions of air contaminants from the facility is entitled to request a hearing. If requesting a contested case hearing, you must submit the following: (1) your name (or for a group or association, an official representative), mailing address, daytime phone number, and fax number, if any; (2) applicant's name and permit number; (3) the statement "[I/we] request a contested case hearing;" (4) a specific description of how you would be adversely affected by the application and air emissions from the facility in a way not common to the general public; (5) the location and distance of your property relative to the facility; and (6) a description of how you use the property which may be impacted by the facility. If the request is made by a group or association, the one or more members who have standing to request a hearing and the interests the group or association seeks to protect must also be identified. You may also submit your proposed adjustments to the application/permit which would satisfy your concerns. Requests for a contested case hearing must be submitted in writing within 15 days following this notice to the Office of the Chief Clerk at the address below.

If any requests for a contested case hearing are timely filed, the executive director will forward the application and any requests for a contested case hearing to the Commissioners for their consideration at a scheduled Commission meeting. Unless the application is directly referred to a contested case hearing, the executive director will mail the response to comments along with notification of Commission meeting to everyone who submitted comments or is on the mailing list for this application. **If a hearing is granted, the subject of a hearing will be limited to disputed issues of fact relating to relevant and material air quality concerns raised during the comment period.** Issues such as property values, noise, traffic safety, and zoning are outside of the Commission's jurisdiction to address in this proceeding.

MAILING LIST In addition to submitting public comments, you may ask to be placed on a mailing list for this application by sending a request to the Office of the Chief Clerk at the address below. Those on the mailing list will receive copies of future public notices (if any) mailed by the Office of the Chief Clerk for this application.

AGENCY CONTACTS AND INFORMATION Public comments and requests must be submitted either electronically at www.tceq.texas.gov/about/comments.html, or in writing to the Texas Commission on Environmental Quality, Office of the Chief Clerk, MC-105, P.O. Box 13087, Austin, Texas 78711-3087. If you communicate with the TCEQ electronically, please be aware that your email address, like your physical mailing address, will become part of the agency's public record. For more information about this permit application or the permitting process, please call the Public Education Program toll free at 1-800-687-4040. Si desea información en Español, puede llamar al 1-800-687-4040.

Further information may also be obtained from TXI Operations, LP, P.O. Box 3129, Humble, Texas 77347-3129 or by calling Ms. Julia Andoe, Martin Marietta, at (832) 441-4177. Notice Issuance Date: January 15, 2015.

TAXES DONE?

Check it off your list!

126 Pine Plz | Silsbee TX 77656
(409) 385-5251
www.security-finance.com

We Do Taxes

- Professional tax return preparation*
- Multiple ways to get your refund FAST
(check, direct deposit or Visa® debit card)
- Open year round
- Ask us about zero up-front prep fee options**
- Flexible filing options – E-Filing for FREE

We accept MasterCard® and Visa® debit cards for prep fees.

*All preparers are trained through an approved IRS continuing education provider and have completed the AFSP – Record of Completion.
** Bank and/or other third party fees may apply.

Want \$20 OFF your tax prep fee?

Just bring in this ad to receive your discount.

Cannot be combined with other offers. Discounting cannot be applied to prior year returns, amendments, state only returns, bank product fees or any return filed after March 14, 2015.

Legal Notices

NOTICE TO CREDITORS

Notice is hereby given that original Letters Testamentary for the Estate of Paul C. Eberhardt, Deceased were issued on the 15th day of January, 2015, in Cause No. 10,223, pending in the County Court of Hardin County, Texas, in Probate, to Ruth E. Eberhardt, as Independent Executrix.

All persons having claims against the Estate, which is currently being administered, are required to present same within the time and in the manner prescribed by law to Meredith M. Bernsen, Creighton, Fox, Johnson & Mills, PLLC, 3535 Calder, Suite 310, Beaumont, Texas 77706.

Legal Notices

CITATION BY PUBLICATION
NO. 10229

THE STATE OF TEXAS
COUNTY OF HARDIN

TO: UNKNOWN HEIRS

GREETING:

You are hereby commanded to appear before the COUNTY COURT of HARDIN COUNTY, TEXAS at the Courthouse of said County in the City of Kountze, HARDIN COUNTY, TEXAS at or before 10:00 o'clock A.M. of the first Monday after the expiration of ten (10) days from the date of publication of this citation by filing a written answer to a petition filed in said Court on JANUARY 21, 2015 in Cause No. 10229, styled, In the Interest of **CHARLOTTE JEAN BENTON BOWEN**.

A brief statement of the nature of the petition is as follows, to-wit: **DETERMINE HEIRSHIP**.

As is more fully shown by the petition on file in this cause.

The officer executing this process shall promptly execute the same according to law, and make due return as the law directs. If this citation is not served within ninety (90) days after the day of issuance, it shall be returned unserved.

ISSUED AND GIVEN UNDER MY HAND AND SEAL OF SAID COURT at office in Kountze, Texas, this the 21st day of January, 2015.

GLENDA ALSTON, COUNTY CLERK
HARDIN COUNTY, TEXAS
By: **CONNIE BECTON, DEPUTY** 51

Legal Notices

PROPOSAL REQUEST FOR QUALIFICATIONS
CONSTRUCTION MANAGER-AT-RISK

Sealed Proposal Request for Qualifications should be plainly marked on the envelope, **PROPOSAL FOR CONSTRUCTION MANAGER-AT-RISK** and addressed to Jackie Ellis, Hardin County Purchasing Department, 300 Monroe, and Kountze, Texas 77625. Qualification Statements will be received until 2:00 P.M., February 12, 2015. No Qualifications Statement tendered later than time fixed will be accepted. Any Qualification Statement not received in Purchasing Department will be refused.

Hardin County is Requesting Construct Manager-At-Risk Qualification Statements from individuals who can adequately demonstrate they have the resources, experience and qualifications, to guide the County through the comprehensive process of an Annex building construction project.

Hardin County has the right to accept or reject any or all submittals. Additional information may be obtained by contacting Hardin County Purchasing (409) 246-5124. www.hardin.co.tx. EEO employer. 52



Photo by Danny Re-
neau/Silsbee Bee
Carley Jones plays
tough defense
Tuesday during the
Lady Tigers game
against the
Orangefield
Bobcats. The 5'4"
freshman has been
a valuable asset
for the Lady Tigers
team this season.

**We Build Quality Homes
In All Surrounding Areas**

**Strahan
CONSTRUCTION**

651-3950 *Show Homes Available*

SHS

From Section 2, Page 4

men hit for 15, White scored nine, Martin had seven, Bertrand scored four, and Jones scored three.

In addition to the 18 points, Hudson picked off 17 rebounds. She also recorded an assist and a steal. Carmen finished with 18 rebounds. Martin was the floor

leader with seven assists.

This week the Tigers will play at Hamshire Fannett on Friday and host Bridge City on

Tuesday. The Tigers now have only three games left on their schedule.

1040 Label **INCOME TAX TIME**

File Your Taxes Here And
GET MONEY FAST!

★ *Free Estimates* ★

**GOLD STAR
Finance**

—Loans and Tax Service—

Questions On Health Insurance/Tax Credit WE CAN HELP!

1115 N 5th St • Silsbee
386-2555
Mon - Fri 8:30 - 5:30pm
OPEN SATURDAYS 8:30 - 12

**WANT ADS WORK
Call 385-5278**



My five cents.

A monthly column from Sen

by Sen. Robert Nichols, Senate District 3

Here in Austin, the Legislature has ended our second week of session. We are off the starting block and continue to pick up the pace for the long race ahead. During this time, as more bills are filed and the members have a chance to meet with each other, many of the issues which will define the course of the coming months begin to appear.

Here are five things that happened this week at your Texas Capitol:

Changing of the Guard
Tuesday was a day of firsts at the Capitol, beginning with the swearing in of Governor Greg Abbott and Lieutenant Governor Dan Patrick, the newest state leaders in over a decade.

Another first is Cecilia Abbot, Governor Abbott's wife, who became the first Latina 'First Lady' of Texas. The swearing in was followed by a barbecue lunch on the lawn of the Capitol and the first inaugural parade down Congress Avenue in over a decade.

After taking his oath of office, Governor Abbott shared his commitment to advancing education in the state, improving roads, expanding water resources and ensuring Texas remains an economic leader.

Lieutenant Governor Patrick spoke about his commitment to gun rights and border security as well as maintaining a focus on education and transportation. I look forward to working with both of these men in the future.

Voting on Senate Rules
This week, the Senate adopted the rules which will be used to govern the senate body

throughout the upcoming session.

This included a change in the way legislation is brought to the floor. The long standing 'two-thirds rule', which required at least 21 of the 31 senators to support a bill before it can be brought to the floor, was changed to require a three-fifths (19 senators) vote.

Another change in the rules was the reduction of standing committees from 19 to 14 committees. The Lieutenant Governor will appoint committees chairs and members to each of these committees in the coming days.

Small Schools Funding
I recently filed SB 324, which would correct the formulas which fund certain small schools at a lower level. Currently, if a school has an average daily attendance of 1,600 and covers less than 300 square miles, they receive a smaller portion of state funds than a district with the same attendance which covers more than 300 square miles.

This bill will alleviate this practice and provide an equal funding formula for all schools in Texas. With an equal multiplier, many schools will be provided additional funding, which will go a long way in helping to improve the education of our students.

A change in the funding formula will affect approximately 450 schools across the state of Texas. This legislation would allow communities the option of maintaining local governance of their school board without having to work around a punitive formula.

House Members

Breakfast

This week I hosted a breakfast for the 11 state representatives and their staff whose districts overlap my Senate district. This overlap provides me with an opportunity to work closely with the House members who represent some of the same individuals I do. Each session, I make it a priority to work with each state representative to discuss issues they are working on, as well as to share my goals for the next few months. Working with the House is important because no bill can be passed by a single chamber. Only by working together can we effectively advocate for the people we represent at home.

Taking Part

I believe ensuring accessibility and transparency are some of the most important things a Legislature can do. It is a positive way for members to remain accountable to the people they serve. One way we are able to do this is by providing many resources online. You can utilize these resources by visiting www.capitol.state.tx.us. Through this site, you will be able to view a live stream of Senate and House committee hearings as well as watching both chambers when they are in session.

Another tool available is being able to look up bills by subject and keyword, review bill analyses and learn about the possible fiscal implications of a bill.

You may also sign up to receive e-mail notifications when bills of interest to you assigned to committee and then advance through the legislative process.

www.silsbeebec.com

Classifieds **GET THE JOB DONE!**

Call 385-5278
To Place Your Ad

Deadline For Classified Ads is 10am Tuesday

NO EXPERIENCE NECESSARY

Person to mount and de-mount
18 wheeler tires

Willing To Train
The Right Person
246-3675

**City of Silsbee
JOB OPENING
Library clerk II**

.....

The City of Silsbee is currently trying to fill the position of **Library Clerk II**. This is an entry level position with starting salary of \$9.00 p/hour. High school diploma, GED or related library experience is required. Application and job description are available online at cityofsilsbee.com.

Applications also available at City Hall or Silsbee Public Library. Must be turned into the Library by February 6th by 5pm.

**Drivers - CDL-A
LOCAL RUNS - HOME DAILY**

**NEW PAY
\$1,500 Sign-On Bonus**

- Earn up to \$23/hr + O.T.
- Work 5 Days Per Week
- Bonuses, benefits, & much MORE!

Must Have Class A-CDL w/X end., and 1 yr. T/T exp.

800-366-4910

To apply, call or go online with your 3 yr emp. history. EOE

www.DupreLogistics.com

**STAY INFORMED
Read The Bee**

MORE GREEN IN 2015

**LOCAL WORK
BEAUMONT AREA**

Earn up to \$70,000+ yr
Excellent Benefits including 401K
Up to \$5000 Sign-On Bonus for Experienced Drivers
Quarterly Safety Bonuses
More Experience = Additional Benefits

CDL-A w/ "X" Endorsement
1 year 18-Wheeler or Tanker Experience Needed

GulfMark Energy, Inc. EOE

Apply Online at www.gulfmarkenergy.com
Call: 800-577-8853

HELP WANTED

The South East Texas Regional Planning Commission seeks a qualified consultant to provide technical assistance to the South East Texas region to improve interoperable emergency communication capabilities and support the implementation of the Statewide Communication Interoperability Plan. The consultant must be familiar with the South East Texas region, possess a working knowledge of the current radio system, and be familiar with the phased migration plan currently being implemented. The broad areas of expertise required are:

Communications:
Working knowledge of interoperable equipment and standards;
Ability to assist in regional training and exercises;
Understanding of the regional communications assets inventory

Equipment Support:
Assisting with interoperable communications initiatives
Assisting local jurisdictions with selection and procurement, as needed
Serving as a liaison with vendors as needed

Interested parties should send qualifications, three references and required hourly compensation rate no later than February 6, 2015 to Sue Landry by email to slandry@setrpc.org or by mail to: Sue Landry, SETRPC, 2210 Eastex Freeway, Beaumont, Texas 77703.

Help Wanted

Drivers: Local-Home Daily & Regional-Out/Back Openings! Great Pay, Bonuses & 100% PAID Health Ins! CDL-A, 1yr TT Exp. w/X-End. Req. Martin Transport Call: 855-979-1946. 24p

DRIVERS: Oils down - freight is up! Regional Freight! Excellent money & hometime! Company & owner Op's. CDL-A, TWIC & Hazmat. 855-252-1634. 42p

NOW HIRING experienced short order cook. Apply in person at The Cottage, 5125 Old Evadale Road. 43c

WANTED: Dump truck driver with Class A or B CDL. 409-454-8888. 52p

FIRST UNITED Methodist Church of Silsbee is seeking a part-time Chancel Choir Director. Please visit www.silsbeeumc.com for a complete job description. For inquiries, call 385-5568. 28tf

WANTED: CNAs, full-time, days and evenings. Apply in person at Silsbee Convalescent Center, 1105 W Hwy. 418, Silsbee. 46tf

STAY INFORMED
Read The Silsbee Bee
Call 385-5278



Are you having trouble finding that perfect gift for someone special?

SUBSCRIBE TODAY
FOR ONLY \$24.00

Hardin, Tyler and Jefferson Counties

Now accepting payment in Visa/MC/Discover

The Silsbee Bee
404 Hwy 96 S 385-5278 Silsbee
www.silsbeebec.com

Golden Triangle Lawn & Landscape

When experience and excellence matter, call GTLL for your custom landscaping projects.

Insured & Bonded

Custom Landscaping Design & Installation
Lawn Maintenance • Irrigation • Grass
Dangerous Trees • Drainage
Landscape Consulting • Dirt & Rock

Anthony McGallion
409-790-9330
Office: 409-373-6447
Email: jam.gttl@gmail.com

We have professionally served Hardin, Jefferson AND Orange Counties for 30 years.

WE OFFER:

- CMI Forestry Mulcher
- Mulcher Clearing / Brushcutting
- Brushcutting • Dirtwork • Stumpgrinding
- Land Clearing • House pads & Site prep
- Debris Removal & Hauloff (including storm debris)

FREE ESTIMATES

CALL NOW 409-246-2987
Contact Wayne Cleveland for prompt & reliable service 24 hours

Garage Sales

ANTIQUES & MORE and Vendors Wanted: 995 N 5th St., Silsbee. 717-262-3548. Monday - Saturday, 9am-5pm. 37tf

OUTSIDE Traders Day: 7am to dark, Thursday, Friday, Saturday & Sunday, 995 N 5th St., Silsbee. 10x12 space only \$10 per day. No alcoholic beverages allowed. 717-262-3548. 37tf

ESTATE SALE By Time And Again: 3203 West Boston Drive, Nederland, off Helena, closer to Hwy 69. Thurs, Jan 29, 9-3; Fri, Jan 30, 9-3 & Sat, Jan 31, 9-?. Cash only, please. You load. My trailer is in the driveway. Ruth Ann, 409-651-0877. Info & pictures.....www.estate-salesbytimeandagain.com

YARD SALE: Friday and Saturday, Jan. 30 and 31 at 2599 Pineview Dr., off FM 1122. Electric pressure washer, leaf blower, pots and pans, misc. items. 5c

GET SOME fast cash on items you no longer need. Have a garage sale! Your unwanted stuff could be another's treasure. And, buyers will find you faster if you place a garage sale ad by calling The Bee at 385-5278. 40tf

TELL OUR advertisers you "saw it in the Silsbee Bee". 22tf

Services

MASTER ELECTRICIAN: Code upgrades, home additions, rewires, panel upgrades, wire to that shop or barn and more. 422-4447. License TECL#27079. Free Estimates. 44p

JOHNNIE'S HANDMAN Services: Yarkwork, pressure washing, electrical, painting. 409-273-6287. 58p

LAWN SERVICE: Call for your yard estimate today. 409-730-5045 OR 409-429-8954. Dependable and guaranteed great job. 54p

STARTING Provider Services Oct. 1. Taking applications for all areas. Contact Myra at 385-0100. 40tf

A&M HOME Repair: Mobile homes, residential. No job too small. Also, patios & decks. Call Angelo or Mary for estimate 755-6394. 34p

DECKS & PORCHES: Carports and patio covers. Build and repair, 50 plus years experience. 409-659-3148 or 659-8421. 516p

JOE MACON House Leveling: House and mobile homes, sill and joist repairs. Owner Joe Macon 659-842 or 659-3148. 516p

AUTO INSURANCE

call **Morgan Insurance Agency**
385-2622

Goodwin's Tree Service

Trimming
Shaping
Removing
Haul-Offs

Licensed & Insured
Free Estimates

350-9918

For Rent

FOR RENT: Super nice remodeled 3BR 1 bath mobile home, Kountze area, \$600 monthly, \$600 deposit. Garbage furnished. No outside pets. Also, 3BR 1 bath mobile home, Kountze area, \$600 monthly, \$600 deposit. No outside pets. Water and garbage furnished and 1BR 1 bath mobile home, all bills paid, \$150 weekly, \$300 deposit. Kountze school district. 246-2475, 246-2190, 679-9232. 5p

VILLAGE CREEK Mini Storage: Climate controlled, 5x7=\$45, 8x7=\$60, 5x14=\$75, 9607 Hwy 418. Call 782-2211. 18tf

FOR RENT: Efficiencies, 1, 2 & 3BR apartments and mobile homes. Utilities paid, deposit required. Call 385-5644. 124p

FOR LEASE: 1-2-3 BR trailers, Small one-room trailer for lease. Safe, clean, quiet. All bills paid. 409-242-0606. 312p

FOR RENT: Large 1/1, \$495 monthly, \$375 deposit, ca/h, 1135 E Hwy 327, Timbers Apartments. 813-1510. 23tf

2000 sq. ft. commercial building, \$450 monthly, good traffic, Silsbee. 782-9714. 15tf

MOBILE HOMES For Rent: 2 and 3BR, nice country setting, Kountze School District. Call James 409-828-1271. 3tf

FOR RENT: Nice 1 and 2BR apartments, utilities paid, no pets. Deposit and references required. 386-0470, 429-6580. 28tf

FOR RENT: Large 2/2 with ca/h, \$595 monthly, \$375 deposit. 1135 E Hwy 327, Timbers Apartments. 813-1510. 23tf

ENJOY Village Creek! Clean 1 or 2BR mobile homes, all utilities paid, stove and refrigerator, no pets. 755-7291. Six miles to Wal-Mart. 3tf

RV PARK: Pavilion, full-hookups, 30 and 50 AMP, access to Village Creek, fishing, swimming, etc. 755-7291. 48tf

SULLIVAN SQUARE: 1-2 bedroom apartments now available \$325-\$395 monthly plus deposit. 782-9714. 15tf

All real estate advertising in this newspaper is subject to the Federal Fair Housing Act of 1968 which makes it illegal to advertise "any preference, limitation or discrimination based on race, color, religion, handicap, family status, sex, age or national origin, or an intention to make any such preference, limitation or discrimination." This newspaper will not knowingly accept any advertising for real estate which is in violation of the law. Our readers are hereby informed that all dwellings advertised in this newspaper are available on an equal opportunity basis. 40tf

For Rent

FOR RENT: 2BR 1 bath duplex mobile home north of Silsbee. All bills paid, \$180 weekly, \$360 weekly or \$700 monthly. 223-8557. 5p

FOR RENT: 2BR 1 bath apartment in town. All bills paid, \$175 weekly, \$350 bi-weekly or \$675 monthly. 223-8557. 5p

FOR LEASE: 3BR 2 bath trailer in Lumberton. 409-299-1150. 5tf

FOR RENT: Small older mobile home, quiet area, \$250 monthly plus deposit. 386-1865. 5c

FOR RENT: Nice large 3/2 mobile home, ca/h. Water furnished, quiet area, \$650 monthly plus deposit. 386-1865. 5c

FOR RENT: 2BR 1 bath house, carport, ca/h, fenced yard, \$550 monthly, no pets. 385-5882. 52p

FOR RENT: 3BR 2 bath mobile home in Evadale, \$650 monthly. 276-1663 or 239-3875. 52p

FOR RENT: 1BR 1 bath apartment in town, all bills paid, \$175 weekly, \$350 bi-weekly or \$650 monthly. 223-8557. 5p

For Sale

FOR SALE: 5th wheel camper trailer, 27' Mallard with slideout, fully furnished, \$5500. 409-926-7359. 42p

FOR SALE: 35' travel trailer, \$1000. 276-1663 or 239-3875. 5p

FOR SALE: 2014 Seadoo Spark, less than 20 hours, \$7000 neg. Call Phil at 363-1381. 5p

CLASSIFIED ADS are now online at silsbee.com.

2500 PINE SHADOWS Duplex Apartments

NOW LEASING

1-2-3 Bedrooms Available
\$525-\$775 Monthly

Move-In Special **FREE** First Month's Rent

Call 409.729.1368
2500 MLK • Silsbee
www.acerentalmanagement.com

250 MISC. FOR SALE

ALL STEEL BUILDINGS. National Manufacturer direct to contractor or customer. 1-800-656-2885 www.RegisBuilding.com (TX & CAN)

305 BUSINESS OPPORTUNITIES

HIS 'N' HERS - Has a hair styler and ask for info. 8047

40 MOUSING AROUND?

Ch...

BARFIELD REAL ESTATE, INC.

1550 Hwy. 96 S Silsbee barfieldrealestate.com

\$30's, \$40's, \$50's & \$60's

\$39,900 - 3/1 MH needs TLC on 2.7 ac. 2245 CR 4550, Spurger.

\$39,900 - 2/1 with pool on corner. 420 S. 8th St. PENDING

\$47,500 - 3/1 fixer-upper Silsbee area.

\$49,900 - 2/2/2 MH, fenced, .81 ac, 3 storage bldg. 88 CR 4710, Fred.

\$59,900 - 2/1 on 0.66 of an acre. 7177 Co. Line Rd.

\$63,850 - 3/2 on 1 ac. 3927 Cooks Rd.

\$69,900 - 3/1, corner lot. 530 N 6th St.

\$70's, \$80's and \$90's

\$78,500 - 3/2/2, 3 ac, needs TLC. 6751 Kiwanis Club Rd.

\$85,000 - 3/2 Brick. 670 N 10th St.

\$89,500 - 3/2 MH on 5.78 ac. 2098 CR 4490, Hillister

\$89,900 - Brick 2/1, 0.98 ac. 8625 W. Boley.

\$94,000 - 4/2 Doublewide MH, 2.91 ac. 4789 Covey Ln.

\$99,900 - 4/2 Doublewide MH on 3.3 ac. 13618 FM 2937.

\$99,900 - 3/2 Doublewide MH on 6.422 ac. 6961 Ben D. Smith, Silsbee

\$100,000's & up

\$130,000 - 3/2 on .282 ac. Large work shop, Evadale.

\$139,000 - New listing! Brick 3/2/2 on 1.5 ac. 5923 Country Club Rd.

\$149,900 - 3/2/2+3 car carport, 2 huge shops on 2.64 ac. 1746 Northwoods, Kountze.

\$159,000 - Brick 3/2/1-livingroom, big den, wet bar, FP, patio, storage bldg. wood fence, corner lot 110 Bowers

REDUCED! \$169,000 - 4/2/2/2CP. .97 ac, landscaped lawn. 108 Wilson, Silsbee.

COMMERCIAL

REDUCED! \$52,000 - Office/multipurpose. Great location. 537 Jordan Rd.

\$72,500 - New country restaurant currently Hunters BBQ. 12833 FM 92 South in Spurger.

LAND

SILSBEE - 90.573 ac, timber land off Hwy 96 Bypass. **\$3,000 per acre**

SILSBEE - 35 ac on Fresenius Rd, heavy timber. Good Price! **\$5,000 per acre**

SILSBEE - 13.76 ac on Hwy 327 & Oglesbee Rd, good to develop. **\$8,500 per acre**

\$15,000 - 2 ac on Howard Rd

\$45,000 - Hwy 96, and frontage on the Old Evadale Hwy. 1.93 ac.

\$70,000 - 10 ac, Hays Rd. Owner Finance

\$100,000 - Lumberton. 4.59 ac on Thomas Rd. City water & sewer, house is uninhabitable, big trees.

RENTAL

LUMBERTON - 30x67 bldg. Lease \$650. 1438 FM 3513 "Old Bmt Hwy".

Suzanne Barfield - 409-385-6769
Martha Harrell Dean - 201-6995 - Nina Costner - 903-265-2924
Tonya Hawkins - 409-679-7484 • Le Ann Arinder - 409-656-7676

47 Years of "Personal" Professional Service

www.SETXHomeFinder.com

0000 HWY 327 WEST, SILSBEE - Highway frontage! .83 acres on 327. Residential or Commercial **\$30,000**

201 BLACK GUM, WILDWOOD - 2/1 cottage w/ 1,464 sqft. Nestled on a corner lot behind club house w/ 2 car detached garage and workshop. **\$102,500**

NEW CONSTRUCTION IN ALLENS LANDING: SOLD - But we can build one for you! Or purchase lot for **\$23,500** & build your own!

3810 PINE TREE, SILSBEE - 3/1.5/1 w/1,488 sqft on .60 acres. New carpet and nestled on dead end street outside city limits. **\$99,900**

510 N 8TH ST, SILSBEE - LARGE 2/2 w/both formals and over 2,000 sqft! Corner lot across from Santa Fe Ballpark. Only **\$110,000**

109 WILSON, SILSBEE w/ 2 car carport & half acre on the South side. 1220 sqft & totally remodeled. **\$184,900**

3606 FM 92, SILSBEE - 3 or 4 bedroom w/ 3 full baths and over 2600 sqft nestled on 7.48 acres! Mature live oaks & to many amenities to list! **\$255,000**

130 TRANQUILITY, SILSBEE - Large 4/3/2 w/over 3000 sqft on 1.8 acres in Enchanted Forrest. Complete remodel in 2007 & to many amenities to list **\$289,900**

8005 BISCAMP, SILSBEE - Grand Estate Home! 4/ 3,2/3 which includes RV parking! All new with modern touches throughout. A true must see nestled on 3.91 acres! **\$355,000**

214 LAKEWOOD, WILDWOOD - Water front 3/2/2 w/ office and 2160 sqft. Total remodeled w/ amazing views of the lake! **\$227,500**

184 CR 834, BUNA - Better than new! 4/2/2 w/ nearly 2,400 sqft on 1.29 acres. Custom home w/ to many amenities to list. 30x40 metal building as well! Priced to sell at **\$237,500**

15540 HWY 326, SOUR LAKE - 3/2.5/3 w/just under 2,300 sqft and nestled on 3.5 acres in H-JISD! Built in 2005 with an open floor plan and 30x40 metal building! **\$295,000**

5425 WESTCHASE LOOP, LUMBERTON - 4/2/2 w/ 1890 sqft. Move in ready. Westwood. **\$172,500**

6 JOHNS LOOP, LUMBERTON - 3/2.5/3 w/over 3,500 sqft and nestled on 1.61 acres! Located on dead end street with timber property behind it! Update throughout! **\$299,900**

5.36 COMMERCIAL ACRES, SILSBEE - Located on the Hwy 96 Bypass just south of Hwy 327. Great location for development. Priced to Sell at **\$350,000**

3892 HWY 96 N, SILSBEE - Business FOR SALE! AGs Feed Store; building is over 4,500 sqft w/ a 35x48ft Greenhouse out back! Everything goes & priced to sell at **\$200,000**

INVESTMENT PROPERTY, SILSBEE - 4 Cottages, 3 Trailers & a Duplex nestled on 2.45 acres. Possible owner finance. Call for details but priced to sell at **\$150,000**

VILLAGE CREEK MINI STORAGE, SILSBEE - Mini Storage, Old BBQ Shack & Efficiency Apartment. All on nearly an acre on FM 418. Possible owner finance. **\$80,000**

35125 S HWY 96, BUNA - 40x70ft Metal Building on .31 acres just south of Hwy 62 intersection. Commercial **\$135,000**

LOOKING TO BUY OR SELL?

Ben Rodriguez **782-5764**

TRIANGLE REAL ESTATE LLC
6756 Phelan Blvd. Suite 241 • Beaumont TX 77706

COLDWELL BANKER **755-1376**

628 S. Main Lumberton

Southern Homes **www.cbsouthernhomes.com**

Lois Gibbs 782-3689	Dorothy Hebert 658-2595
Daria Eason 791-3439	Jennifer Baird 781-8833
Debbie Coward 791-7253	Darci Piel 767-1576
Traci Tucker 338-2145	JJ Elizondo 828-1419
Brooke Scifres 504-9513	Stephanie Ellis 554-9372
	Caitie Krieger 790-3559

6866 FM 1122, Sils- Spacious 3/3 home, every bdr has it's own bath, 2 FP's. \$179,000

3546 OLD SPURGER HWY, Sils- Pretty 2,128 sqft MH on 1+ acre-room to roam! \$91,500

550 ROOSEVELT, Sils- Unique 1616.52' impressive home has tons of possibilities!

1545 HWY 327, Sils- Fantastic! Commercial property on 5.76 acres. Tons of possibilities!

116 CARRIAGE, Sils- Cute 3/2/2 carport has spacious gameroom, updated flooring, cird patio.

6700 KWANIS, Sils- Great 3/2.5/2 story home on 1 acre lot! \$125,000 Call Today!

129 SHERWOOD TR, Sils- Room to roam in this lovely 3/2.5/4 home w/inground pool. \$260,000

2319 W HWY 327, Sils- Excellent commercial location on 3.34 acres! Call Today!

21245 FM 92 S, Fred- Business w/indulge wide MH residence + acreage! \$239,000

19149 FM 92 S, Spurger- This 4/2 offers plenty of room to roam on 4+ acres. \$144,900

9711 FM 1013, Spurger- 4/2/2 on 10+ acres w/inground, storage shed, great layout! \$139,000

3572 FM 1293, Kou- 26.25 acres secluded w/private road. Hunt on your own land! \$169,000

6378 CROOKED BRIDGE, Kou- 9.93 acres waiting for you! Call for more information.

1440 PINE, Kou- Very well kept office building w/great visibility & highway frontage.

523 E WALTON, Lum- Charming home nestled on 3.5 acres, open concept. \$232,000

6235 JENNY, Lum- Gorgeous 3/2/2 w/above ground pool, deck, storage building. \$228,000

14 GREENHILL, Lum- Spacious 4/2.5/2 home w/wireless FP, home sits on 3 lots. \$177,900

12025 CHARLOTTE, Lum- Waterfront 4/3/2 home beautifully updated. \$209,900

5405 WESTMONT, Lum- Gorgeous 4/2/2 custom built w/ split brdm plan. \$185,000

6510 THOMAS CIR, Lum- 3/2/2 home w/inground pool, metal shop. \$159,900

5400 MANION WAY, Lum- Stunning 5/3.5/2 w/open concept, FP, inground pool. \$459,900

250 E CHANCE CUTOFF, Lum- 3/1 on 2.51 acres is waiting for you! Call today to view.

240 BEECH DR, Lum- Lovely 2/2/2 home w/pretty brick FP, enclosed back porch. \$139,900

920 VILLAGE CREEK, Lum- Wonderfully updated 4/2.5/2 w/lots of space & big yard! \$149,500

12 BRIARCLIFF, Lum- 4/2.5 tri-level home has den w/women bar, FP, updates. \$184,900

117 BUMSTEAD, Lum- Adorable 4/2 well maintained home, move-in ready. \$113,000

VILLAGE CREEK PKWY, Lum- Almost 1 acre, cleared & ready to build on. \$38,000

575 W CHANCE, Lum- Gorgeous 4/2.5/3 on 7/66 acres, feed the deer from your backyard!

212 WINDING BROOK, Lum- Beautiful River Birch 4/2/2, large utility, front & back porches.

112 JORDAN GAGE, Lum- Beautiful cul-de-sac lot! Call for more information.

LAND ON WALTON RD in Lumberton-perfect for your dream home!

321 CR 857, Evadale- Move-in ready 2/1 11over sized kitchen, storage building. \$89,500

5794 CR 725, Buna- Beautiful 3/1.5 home on 6.58 acres, stone FP, metal roof. \$205,000

141 CR 777, Buna- Charming 2/2 home on 1.93+ acres, country living close to town! \$86,000

121 CR 815, Buna- Spacious 3/2.5+ bonus rm, beautiful stone FP, huge porch. \$155,000

2432 CR 716, Buna- 3/2 on 2.70 acres w/2 stocked ponds, cird porch. Call Today! \$139,900

6131 FM 1013 W, Kirbyville- Remodeled 3/2 home on 5.26 acres w/pond. \$145,000

VILLAGE CREEK FRONT ACREAGE- Approx. 115 acres.

If you or a loved one are having a problem with alcohol

Call AA Intergroup
409-832-1107

Drug Problem? We Can Help!

Narcotics Anonymous Meeting

Each Tuesday & Friday Night
7:00 - 8:00 pm

635 N 4th St. 409-651-5230 Silsbee
This is an open meeting and all are welcome to attend.

Read us each week online at silsbeebec.com

HICKMAN REAL ESTATE
1501 Hwy 96S • 385-2859 • Silsbee, TX

Broker: VAL HICKMAN 409-550-9126
Broker: RITA MCCLELLAND 409-223-3295

LAND

EVADALE - 1/2 acre, Hwy 105, service pole, sewer system, water no pump. **\$12,500.**

SILSBEE - 1/2 acre fig Hwy 418, wooded nice home site, utilities available. **Reduced \$10,000**

COMMERCIAL

SILSBEE - Hwy 418 & 92 - 36,000 sq ft. commercial building, plenty of parking. **\$465,000** or lease

SILSBEE - Hwy 92 & 1122 - formerly church, 5,500 sq. ft, brick bldg, air/heat, 1+ acres-ideal location for any type bus. **\$125,000** or lease

SILSBEE - Hwy 418 & Old Hwy 418. Brick building with 1873 sq. ft. **\$45,000** or best offer

TEXAS STATEWIDE CLASSIFIED ADVERTISING NETWORK

TexSCAN

TexSCAN Week of **January 25, 2015**

DRIVERS	HEALTH	SATELLITE
25 DRIVER TRAINEES NEEDED! Learn to drive for Stevens Transport! No experience needed! Paid CDL training! New drivers can earn \$800 per week! 1-888-589-9677. drive4stevens.com	ACORN STAIRLIFTS. THE AFFORDABLE solution to your stairs! **Limited time - \$250 Off Your Stairlift Purchase! Buy Direct & SAVE. Please call 1-800-428-3092 for FREE DVD and brochure.	GET THE BIG Deal from DirecTV! Act Now \$19.99/mo. Free 3-months of HBO, Starz SHOWTIME & CINEMAX! FREE GENIE HD/DVR Upgrade! 2014 NFL Sunday Ticket Included with Select Packages. New Customers Only. IV Support Holdings LLC- An authorized DirecTV Dealer. Some exclusions apply - Call for details 1-800-517-6582
REAL ESTATE	BUSINESS OPPORTUNITIES	Run Your Ad in TexSCAN!
LOOKING TO SELL land? Reach over 2-million readers for the low price in the Texas & Statewide Advertising Network. Contact this newspaper or call 1-800-749-4793	SAWMILLS FROM ONLY \$4,397.00- MAKE MONEY with your own bandmill- Cut lumber any dimension. In Stock, ready to ship! FREE Info/DVD: www.NorwoodSawmills.com or 1-800-578-1363 ext. 300N	Statewide Ad \$550 290 Newspapers, 871,154 Circulation North Region Only \$250 69 Newspapers, 165,558 Circulation South Region Only \$250 101 Newspapers, 369,303 Circulation West Region Only \$250 92 Newspapers, 210,884 Circulation
15-20 ACRES, Edwards, Menard, or Concho Counties. Live oak, mesquite, cedar cover, abundant native and exotic game. Starting at \$2695/dwn. \$491/mo. (9.9%, 20-years) 1-800-876-9720 or ranchenterprisesltd.com	SOCIAL SECURITY DISABILITY BENEFITS. Unable to work? Denied benefits? We Can Help! WIN or Pay Nothing! Contact Bill Gordon & Associates at 1-800-755-0168 to start your application today!	To Order: Call this Newspaper direct, or call Texas Press Service at 1-800-749-4793 Today!

Extend your advertising reach with TexSCAN, your Statewide Classified Ad Network.

NOTICE: While most advertisers are reputable, we cannot guarantee products or services advertised. We urge readers to use caution and when in doubt, contact the Texas Attorney General at 1-800-621-0509 or the Federal Trade Commission at 1-877-FTC-HELP. The FTC web site is www.ftc.gov/zip

Hardin County Sheriff's Report:

The Hardin County Sheriff's Office has been busy the past few weeks with several arrests around the county.

The people named in this report have been charged with but not found guilty of the crimes listed. This information is provided by Sheriff Ed Cain under the Texas Open Records Act, Article 62552-17A.

67349: Crystal Broomes, Orange, was released from jail on Jan. 16 after being arrested by Deputy Griffin on a warrant for bail jumping and failure to appear. Bond was set at \$10,000.

68004: Crystal Broomes, Orange, was released from jail on Jan. 16 after being arrested by Deputy Griffin on a warrant for bail jumping and failure to appear. Bond was set at \$10,000.

64223: Crystal Broomes, Orange, was released from jail on Jan. 16 after being arrested by Deputy Griffin on a warrant for driving while intoxicated failure to appear. Bond was set at \$10,000.

2015-40010: Michael A. Carlos, Kountze, was released from jail on Jan. 18 after being arrested by Deputy Orr and charged with one count of possession of a controlled substance PG 2 under or equal to 2 oz. Justice of the Peace Kent Walker set bond at \$1,500.

2015-40002: Kayla Huelsman, Silsbee, was released

HARDIN COUNTY'S TOP 5 MOST WANTED -- January 28, 2015



MELVIN DYLE BEARD
W/M, Age: 59

Wanted for two (20 counts of indecency with a child-failure to appear

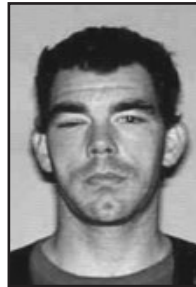
*LKA: 1773 Royal Oak Road Kountze, TX



WILLIAM CURTIS SMITH II
W/M, Age: 39

Wanted for manufacturing/delivery of controlled substance and three (3) counts bail jumping

*LKA: 4731 N. Hwy 326 Kountze, TX



WAYLON JAMES SEALY
W/M, Age: 36

Wanted for burglary and felony theft

*LKA: 4205 Quail Valley Kountze, TX



STEVEN WAYNE HADNOT
B/M Age 38

Wanted for unlawful possession of firearm by a felon and evading arrest

*LKA: 1331 Hilltop Road Kountze, TX



JAMES MICHAEL NUGENT
W/M, Age 43

Wanted for credit card abuse & forgery failure to appear.

*LKA:5777 Hwy 326 North Kountze, TX

from jail on Jan. 18 after being arrested by Sgt. Vincent and charged with one count of prohibitive substance/item in correctional facility. Justice of the Peace Kent Walker set bond at \$5,000.

2015-40003: Kayla Huelsman, Silsbee, was released from jail on Jan. 18 after being arrested by Sgt. Vincent and charged with one count of possession of a controlled substance PG 1 under 1 gram. Justice of the Peace Kent Walker set bond at \$5,000.

2015-40004: Kayla Huelsman, Silsbee, was released

from jail on Jan. 18 after being arrested by Sgt. Vincent and charged with one count of possession of marijuana under 2 oz. Justice of the Peace Kent Walker set bond at \$1,500.

2015-30015: Eric A. Iglesias, Beaumont, was released from jail on Jan. 18 after being arrested by Deputy Lee and charged with one count of assault causes bodily injury - family violence. Justice of the Peace Kent Walker set bond at \$5,000.

2015-40005: Kasey Sterling, Warren, was released from jail on Jan. 18 after being arrested by Sgt. Vincent and charged with one count of possession of a controlled substance PG 1 under 1 gram. Justice of the Peace Kent Walker set bond at \$5,000.

Silsbee Police Report:

The Silsbee Police Department has been very busy this past week with several arrests and incident reports around the city, including numerous misdemeanor arrests and warrants served.

The people named in this report have been charged with but not convicted of the crimes listed. This information has been provided by Police Chief Mark Davis under the Texas Open Records Act, Article 62552-17A.

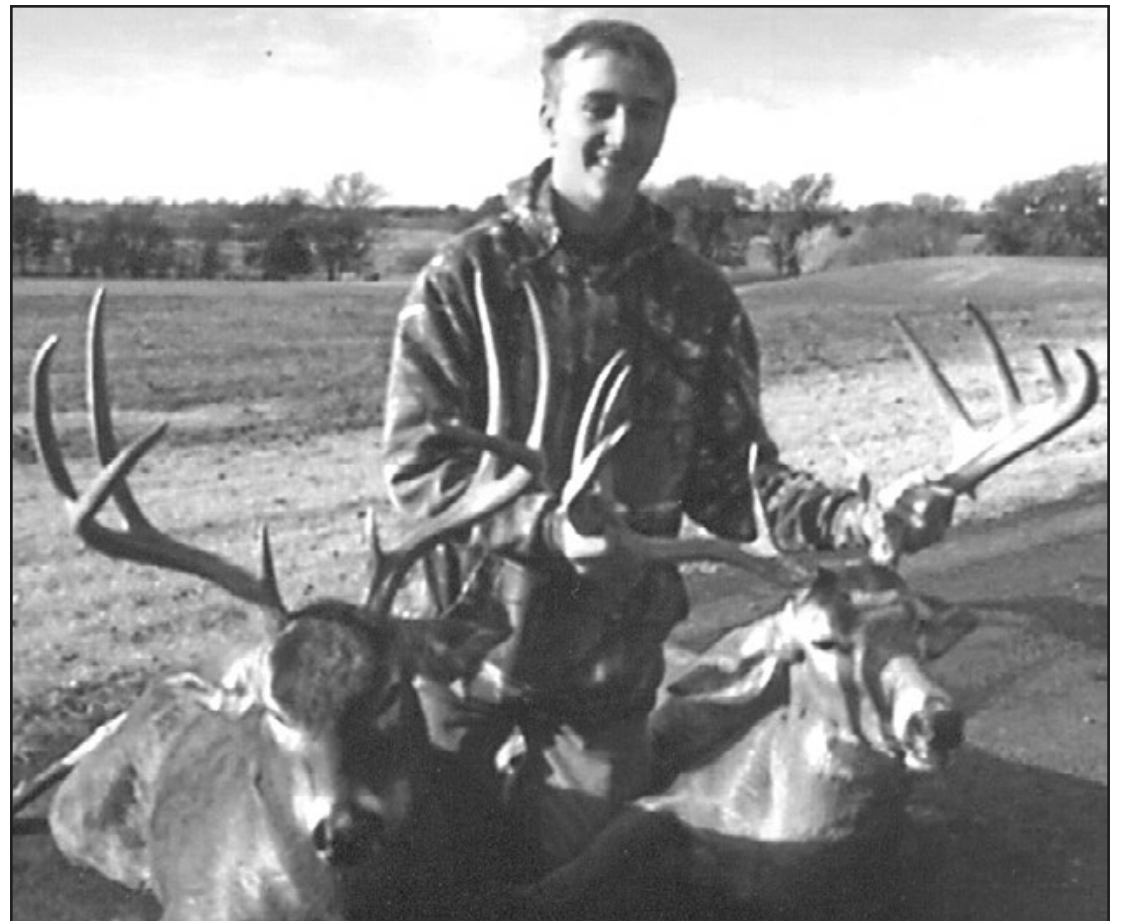
20150014: Cedric Zelshun Irvin, 44, Silsbee, was arrested on Jan. 12 by Officer Justin Holt and charged with one count of driving while intoxicated third or more.

20150019: Ryan Sterling Farmer, 33, Silsbee, was arrested on Jan. 15 by Officer Chris Hartman and charged with one count of criminal

trespass. 20150026: Paris Reshard Lowe, 26, Silsbee, was arrested on Jan. 21 by HCSO on a Silsbee warrant for theft more than or equal to \$50 but less than \$500.

20150029: Janna Dickerson Martin, 44, Silsbee, was arrested on Jan. 22 by Officer Timothy Scroggins and charged with one count of theft more than or equal to \$50 but less than \$500, and possession of a controlled substance PG 1 more than or equal to 1 gram but less than 4 grams.

20150031: Connie Sue Nation, 42, Buna, was arrested on Jan. 24 by Officer Timothy Scroggins and charged with one count of theft more than or equal to \$50 but less than \$500.



Ethan Bourque harvested these two trophies at the RW Trophy Ranch in Terrell, Texas. He was hunting with his grandfather, Bo Graham on the weekend of Nov. 22. Ethan is the grandson of Bo and Dana Graham of Bridge City, and Bill and Mary Davis of Beaumont.

Hardin County Bail Bond

Lowest Prices Guaranteed

Friendly Courteous Helpful

SUBSCRIBE to the Silsbee Bee Call 409 385-5278

Silsbee KIA

Congratulations Vonceil Nelson for selling 38 vehicles in December!

If you are a Pastor, please have your congregation members come in and ask for Vonceil Nelson. We will bless your church with a \$200 referral for every purchase!

409-291-7163 WARRANTY FOREVER!

silsbeekia.com • 1275 S. Highway 96 • Silsbee, TX 77656

NO CREDIT? BAD CREDIT? DIVORCE? NO PROBLEM! WE WILL GET YOU FINANCED!

IF YOU WANT A GOOD DEAL COME SEE VONCEIL!

Senior Living

Pine Arbor offers new rehab wing

Pine Arbor Nursing Center has converted one wing of its building into a Rehab and Restorative Rehab Wing.

The wing has eight rooms, all of which are private rooms with its own bathroom.

Wendy Jeselink, the administrator of the facility, says that the average stay in a rehab facility is 20 days but some may stay longer and some may be there for a shorter time.

During its initial opening, the facility had three patients with two of them scheduled to be discharged that day.

Every patient is different. Their needs dictate the furnishings in the room. The common thing in all the rooms is the bed. Chairs and tables are provided to meet the needs of the patient in the room.

The facility provides physical therapy, occupational therapy and speech therapy for those in need.

The therapist who work at Pine Arbor include the following with their areas of expertise.

Lydia Efuribe is a physical therapist.

Linus Kiregu is an occupational therapists.

Sam Marie Smith is a physical therapy assistant.

Telettha Daniels is a Certi-

fied Occupational therapist assistant of COTA.

Stacie Fea and Theresa Strawser are speech language pathologists.

Crystal Stephenson, an RN, is the Director of Nursing, and Christy Parsons, RN is the Assistant Director of Nursing.

Every month, the patients and Pine Arbor enjoy a family night. The patients and their families are invited to gather for the evening.

The families are asked to bring a dish and the facility matches that with a dish. The evening is a great social evening for the patients, and it provides the representatives of the facility an opportunity to allow them to explain changes that are taking place.

Pine Arbor has already had one of these family nights in January, and they will be celebrating another one on February 12. The event, which will have a theme of celebrating Valentines will start at 6 p.m.

Jeselink indicated that it is a privilege to offer a new service to the community but that opportunity comes with its own costs.

The facility which was rated as a 90 bed facility will now be rated as an 82 bed facility.

Happy Birthday



GRACE BUFFINGTON

Buffington celebrates 103rd birthday

Grace Buffington has recently celebrated her 103rd birthday on Jan. 27.

Buffington was born on Jan. 27, 1912 to Henry Thomas Padgett and Della Grace McWanter in Limestone County, Texas.

Her father was a farmer and her mother was a housewife. The couple had 11 children including Grace.

Buffington's mother passed away when she was eight years old, leaving her to as-

sume the role to raise her siblings.

Grace married in 1946 to Gasta Buffington. She then became a mother of his three children, and the couple later had their own child together.

Gasta and Grace were married 53 years before Gasta passed away.

Grace has been a resident at Village Creek Nursing Home in Lumberton. She has seven grandkids and thirteen great grandkids.



Pine Arbor in Silsbee now offers a spacious private room in its Rehab and Restorative wing.

February is National Age-Related Macular Degeneration and Low Vision Awareness Month

Age-Related Macular Degeneration (AMD) is the number one cause of severe vision loss in U.S. adults over age 60. The devastating condition affects the central vision of as many as 15 million Americans, impairing their ability to see normally and perform many necessary tasks.

This February, in observance of National AMD/Low Vision Awareness Month, we

encourage Americans over the age of 60 to learn the warning signs of AMD and schedule an annual dilated eye exam.

Understanding AMD
AMD is the gradual but persistent breakdown of the macula, which is the part of the eye that provides sharp, central vision needed for seeing objects clearly.

Over time, this deterioration can affect the ability to read,

drive, identify faces, watch television, navigate stairs and perform a suite of other daily tasks. For many adults, this visual deterioration occurs in one eye and may eventually form in the other.

There are two types of AMD - "dry" and "wet". The majority of people with AMD have the "dry" form, which is

See VISION on PG. 2, SEC. 3

Silsbee Medical Center

Now Accepting New Patients
Healthcare For The Entire Family

Newborns • Children • Teens • Adults • Seniors

We Offer Service for Acute & Chronic Illness plus

- Women's Health Care
- Weight Clinic
- Lab Work Services



Accepting Traditional Medicare

Please call for an appointment



Michelle Woodruff, CPNP, FNP-C

1185 N 11th **385-0556** Silsbee

www.edwardjones.com

When it comes to your to-do list, put your future first.

Decisions made in the past may no longer be what's best for the future. To help keep everything up to date, Edward Jones offers a complimentary financial review.

A financial review is a great opportunity to sit face to face with an Edward Jones financial advisor and develop strategies to help keep your finances in line with your short- and long-term goals.

To find out how to get your financial goals on track, call or visit today.



Gary D. Freeman, AAMS®
Financial Advisor

959 N. 5th Street
Silsbee, TX 77656
(409) 385-0410

Edward Jones
MAKING SENSE OF INVESTING

Member SIPC

Find the classifieds online each week at silseebee.com



New At Pine Arbor Rehab Wing

- Private Rooms
- Newly Decorated
- Designed for Patient's Comfort & Privacy

We specialize in helping people go back home.

A fall, stroke, or illness can deprive you of your customary feeling of independence and security at Pine Arbor, our therapists specialize in rehabilitation programs providing assistance for:

- Now Certified for E-STIM for swallowing & facial paralysis
- Physical impairment due to stroke
- Impaired coordination and balance
- Hand rehabilitation with customized splinting
- Recuperation after surgery
- Difficulty swallowing
- Fear of falling
- Memory loss
- Weakness in arms or legs
- Arthritis flare ups
- Hearing loss or impairment



Pine Arbor Physical Therapy Team

Physical Therapy • Occupational Therapy • Speech Therapy



Pine Arbor
Health Care Center

705 FM 418 West 409-385-0033
409-385-8116 (Fax) Silsbee, Tx

Natasha Brown
Admissions Director
790-5122

We Proudly Serve 19 Counties including Hardin, Jasper, Jefferson, Tyler and Newton
Skilled Nursing & Pediatric Services
Physical/Occupational/Speech Therapy

SERVICES PROVIDED

- Intravenous Infusion
- Injections
- Wound Care
- Catheter Care
- Gastrostomy Care
- Venipuncture
- Tracheostomy Care
- Diabetic Care
- Teaching homecare issues, safety & more



ADVANTAGE PLUS HOMECARE

Beaumont: 409-899-1665 • Jasper: 409-489-1496 • Orange: 409-883-9902 • Lufkin: 936-632-2370

Toll Free: 866-489-1496

Accepting Medicare, Medicaid, Workers Compensation, Most Insurance and Private Pay



Local seniors offer advice

Representatives of The Silsbee Bee got a chance to ask three elderly people in local nursing centers, what advice they would have to offer to young people.

The first person, a woman in her late 80's, voiced some simple advice.

"Get a job and stay out of trouble," her words of wisdom offered. "There are plenty of jobs to be had."

She says she has enjoyed living in the nursing center after many years living alone.

She worked for 20 years at Kirby Lumber, where she

drove a truck, and worked in the yard before starting a new life. She is a mother of five children, and led a very active life.

A male offered advice and stated that he classified himself as a "clown".

His assessment of his own situation was "I hear nothing. I do nothing. I am nothing."

He moved into the nursing center after suffering a fall that caused him to lose part of his brain facility.

For some time, he could not speak, but he has since regained his speech and now is one of the fastest talkers in the nursing center.

One of the other residents described him as being "one of the smartest people in the building", and another indicated that he simply "talked too much".

The fact remains that he is extremely well educated with a degree in journalism from one of the state's largest universities.

He has followed a career path that has included working in newspapers, magazines, and working writing press releases and newsletters for lobbyist in Austin for years.

He has helped write at least eight books

Despite his fine education, life has had its challenges. He suffered a drinking problem that he had to overcome. He has been sober for 28 years and has worked to set up AA groups.

He has also worked to help others who are dependent on chemicals.

He is young enough to still have career ambitions, and hopes to write a book about his own life, and life at a nursing center.

He acknowledges that it is hard to use real facts when you write about people that you love. So his plan is to try to tell the truth in a non-fiction story.

A fall in his garage caused the trauma that led to his life in a nursing center. He was found by a friend in his garage, who was a member of his AA group.

That fall changed his life. It not only left him speechless, but left him in an environment where most of the people he encountered were much older than him.

It gave him time to reflect on his life. He has only one son who is under 40, and he speaks fondly of that son, who he named after his best friend who died while trying to save someone who was drowning.

"They should learn to be themselves and to always tell the truth."

His advice for young people is that "they should learn to be themselves, and to always tell the truth."

"Alcoholics want to lie all the time," he said.

The third lady is nearly 90 years old. She seems to be very ambulatory and also well spoken. She lived at home for many years but has been in the center for nearly four years.

Her career crossed many borders.

During World War II, she worked in an ordinance plant building bombs. Even though this job sounds dangerous, she says that it was not.

After the war, she did a lot of private duty nursing. She worked on a degree in nursing but never completed it.

She was a college dorm mom and had the opportunity to be around a lot of foreign students. Sometimes those people came from totally different environments.

Sometimes you had to educate them on running water, and how to use the bathroom facilities.

She said she had to encourage some of the foreign girls to close their blinds when the

See ADVICE on PG. 3, SEC. 3

Silsbee Oaks



Silsbee Oaks residents Sherron Ray, Tom Jackson and Lois Lockwood had party favors complete with confetti bags they made in crafts on New Year's Eve. Everyone enjoyed sandwiches, chips, dips and homemade cookies. There was also a countdown to 2015 and the residents made New Year's Resolutions.

Six tips for helping elderly parents cope with loneliness

Loneliness is one of the leading causes of depression in the senior population. As seniors age, they're often forced to relinquish activities they love due to diminishing physical capabilities.

Friends and loved ones pass away, and seniors can begin to feel isolated. This is especially true for those who choose to age in place, even though their mobility may be limited.

Here are six tips for caregivers and family members to help prevent loved ones from becoming lonely.

1. Hire a companion. Individuals who work as professional companions love what they do. They are personable, interested and compassionate.

A companion can provide social stimulation as well household help, meal preparation and/or transportation assistance.

2. Adopt a pet. Numerous



studies have found that seniors benefit from the animal-human connection.

Owning a pet provides companionship 24/7, motivates seniors to take short walks or get outside to a nearby park and provides an unconditionally loving ear to talk to.

There are programs that work closely with seniors to find pets that fit their physi-

cal limitations. Seniors usually qualify for reduced adoption fees and veterinary services.

3. Senior day care. Adult day care facilities are wonderful caregiver resources. These settings provide a social atmosphere where seniors can hang out, participate in a wide range of activities,

See LONELY on PG. 3, SEC. 3

Fred Health Care
Family Practice

Kim Best, PA
Now Accepting New Patients from 2 years old and up

Now Teaching CPR, AED CLASSES
Call for class schedule

Mon • Tues • Thurs • Fri
8:00am - 4:15pm

Highway 92 North • Fred
429-9494

Physician's Link Home Care
Linking Health Care Home

- Skilled Nursing
- Disease Management
- Wound Care
- Physical Therapy

Medicare • Medicaid
Private Duty • Providers
Specialty Care • Self Pay

CALL FOR YOUR ASSESSMENT TODAY!

409-385-7744
physicianslinkhomecare.net

1350 Hwy 327 E Ste. B • Silsbee, TX 77656

Silsbee CONVALESCENT CENTER

A Cantex Healthcare Center
1105 W. Hwy 418 • 385-3784

Short Term Care Available
A few days, a few weeks or several months

- Meals and snacks planned with each residents needs in mind.
- Variety of therapeutic recreational activities offered to meet social aspects of care.

"Big Enough To Help - Small Enough To Care"

Programs & Services

- Skilled 24 hour care
- Adult Day Care
- In house rehab
- Hospice
- Pulmonary Rehab Unit
- Wound Care
- Therapeutic Diets
- Activities Program
- Housekeeping
- Social work/Discharge Planning
- Physical, Speech and Occupational Therapy
- Respiratory Therapy

Our House Can Become Your Home

VISION

less severe and develops gradually.

It is important to carefully monitor central vision when diagnosed with AMD, because it can quickly develop into a more serious condition - wet AMD.

- Risk Factors
- According to vision experts, the top five risk factors for AMD are:
 - Being over the age of 50
 - Family history

- Smoking cigarettes
- Obesity
- Hypertension

Unfortunately, many people don't realize they have a macular problem until they notice blurred or distorted vision. If you or someone in your family is at an increased risk for AMD, see an eye care provider as soon as possible to undergo an eye exam.

Early detection of AMD is the most important step to preventing serious vision loss.

- Treatment Options

There is no treatment for dry AMD but doctors have found a link between nutrition and the progression of dry AMD.

Introducing low-fat foods and dark leafy greens into your diet can slow vision loss and may even increase your overall wellness.



If wet AMD is detected early, laser treatment is a popular method to help prevent severe vision loss.

As we observe National AMD/Low Vision Awareness Month, take this opportunity to reduce your risk of developing AMD.

Avoid smoking, exercise

regularly, maintain normal blood pressure and cholesterol, and eat a healthy diet that includes green leafy vegetables and fish.

For extra motivation, find a friend, partner or neighbor to engage in healthy habits with you.

From Section 3, Page 1

FRAZIER Physical Therapy

Enjoy the freedom to move

Ultrasound is beneficial in treating

Tendonitis • Bursitis, Muscle spasm
Swelling • Fascitis • Plantar Neck & back pain

Medicare • Worker's Comp • Insurance

Nolen Esparza

Jerri Frazier, P.T./Owner
"Serving Hardin, Jasper & Tyler Counties since 1982"

1162 Hwy 327 E
Silsbee

385-2500
www.frazierpt.com

Jerri Frazier

Silsbee Convalescent



Residents of Silsbee Convalescent got a surprise in December when Santa came to visit. Santa shared gifts and greeted the residents in preparation for the holiday.

Edward D. Jones – Financial Focus

Use “Tax Diversification” to help manage retirement income

You need to save and invest as much as possible to pay for the retirement lifestyle you’ve envisioned. But your retirement income also depends, to a certain degree, on how your retirement funds are taxed. And that’s why you may be interested in tax diversification.

To understand the concept of tax diversification, you’ll need to be familiar with how two of the most important retirement-savings vehicles — an IRA and a 401(k) — are taxed. Essentially, these accounts can be classified as either “traditional” or “Roth.”

When you invest in a traditional IRA or 401(k), your contributions may be tax-deductible and your earnings can grow tax deferred.

With a Roth IRA or 401(k), your contributions are not deductible, but your distributions can potentially be tax-free, provided you meet certain conditions. (Keep in mind, though, that to contribute to a Roth IRA, you can’t exceed designated income limits.)

Also, not all employers offer the Roth option for 401(k) plans.)

Of course, “tax free” sounds better than “tax deferred,” so you might think that a Roth option is always going to be preferable. But that’s not necessarily the case.

If you think your tax bracket will be lower in retirement than when you were working, a traditional IRA or 401(k) might be a better choice, due to the cumulative tax deductions you took at a higher tax rate.

But if your tax bracket will be the same, or higher, during retirement, then the value of tax-free distributions from a Roth IRA or 401(k) may outweigh the benefits of the tax deductions you’d get from a traditional IRA or 401(k).

So making the choice between “traditional” and “Roth” could be tricky.

But here’s the good news: You don’t necessarily have to choose, at least not with your IRA. That’s because you may be able to contribute to both a traditional IRA and a Roth IRA, assuming you meet the Roth’s income guidelines.

This allows you to benefit from both the tax deductions of the traditional IRA and the potential tax-free distributions of the Roth IRA.

And once you retire, this “tax diversification” can be especially valuable. Why? Because when you have money in different types of accounts, you gain flexibility in how you structure your withdrawals — and this flexibility can help you potentially increase the amount of your after-tax disposable income.

If you have a variety of accounts, with different tax treatments, you could decide to first make your required withdrawals (from a traditional IRA and 401(k) or other

employer-sponsored plan), followed, in order, by withdrawals from your taxable investment accounts, your tax-deferred accounts and, finally, your tax-free accounts.

Keep in mind, though, that you may need to vary your actual sequence of withdrawals from year to year, depending on your tax situation.

For example, it might make sense to change the order of withdrawals, or take with-

drawals from multiple accounts, to help reduce taxes and avoid moving into a different tax bracket.

Clearly, tax diversification can be beneficial. So after consulting with your tax and financial advisors, consider ways of allocating your retirement plan contributions to provide the flexibility you need to maximize your income during your retirement years.

ADVICE

From Section 3, Page 2

blinds when the lights were on.

She was a dorm mom for about 3-1/2 years after she reached retirement age.

One thing she learned about the foreign students was that in their home country sometimes they only studied their vocation, and did not take the basic required courses for an education in the US.

She has had varied career

doing everything from working in a nursing home to working in a JP office.

Her advice to young people is that they should think about their vocation and work towards it.

“Don’t sit on your laurels and wait on your parents to do things for you,” she said.

She also has five children scattered across the U.S. from the East Coast to the far north

“Don’t sit on your laurels and wait on your parents to do things for you,”

area of the Rocky Mountains. She says that she has a slew of grandchildren.

All three of the elderly citizens seem happy with their present place in life.

LONELY

From Section 3, Page 2

take day trips and more.

It can become a club of sorts, allowing seniors to get their independent social fix while caregivers can run errands or take a much-needed break.

4. Keep active. When favorite hobbies or past-times no longer are possible due to physical limitations, it’s time to find replacements to keep active.

Even though a senior may not be able to play tennis anymore, she may be able to join

a walking club.

Avid readers with failing eyes can join a book club and use audio books to keep up with the literary arts.

5. Volunteer. One way for seniors to stave off loneliness is to serve others in their community.

Volunteering has been shown to improve mental well-being, provide a purpose and can even help seniors to live longer.

6. Get a change of scenery. Loneliness often is a sign that

it’s time to move into an assisted living community.

In addition to providing a safe atmosphere for seniors, assisted living facilities provide socialization and activities that prevent seniors from growing lonely.

Don’t let loneliness weaken the spirit and well-being of a beloved senior in your life. Look into caregiver resources designed to keep seniors active, involved and loving life.

Making Valentine's Day special for seniors

Valentine’s Day is all about love and romance, and who doesn’t like that?

The extra-special attention lathered upon us each Feb. 14 evokes the warm and gooey feelings we felt when we first fell in love.

For many seniors, however, this annual day of love can be just another day, or worse, a day of increased loneliness and sorrow.

I think about my own grandmother who spent nearly 60 years with the love of her life,

and the last 15 missing him.

I find it unfathomable the pain she must feel not having her love lying next to her each night, not having his strong hands to hold, or his lips to

See VALENTINE on PG. 4, SEC. 3

Financial Focus

What Can You Learn from the “Oracle of Omaha”?

Warren Buffet, the “Oracle of Omaha,” is one of the greatest investors. Here are a few of his nuggets of wisdom:

“Whether we’re talking about socks or stocks, I like buying quality merchandise when it is marked down.”

In other words, look for bargains — good investments whose price may have dropped.

Here’s another quote: “When we own portions of outstanding businesses with outstanding managements, our favorite holding period is forever.”

While an endless holding period may not be possible for all of us, you get the idea: the longer you keep a good investment, the better off you may be when you do sell.

One more quote: “If investors insist on trying to time their participation in equities, they should try to be fearful when others are greedy and greedy only when others are fearful.”

The lesson? Don’t try to “time” the market and don’t follow the crowd — many of whom tend to sell when prices are low and continue buying when prices have already peaked.

Consider Mr. Buffet’s ideas — they’ve worked well for him.

This article was written by Edward Jones for use by your local Edward Jones Financial Advisor.

Member SIPC

Edward Jones, its employees and financial advisors are not estate planners and cannot provide tax or legal advice. You should consult your estate-planning attorney or qualified tax advisor regarding your situation.



See Gary Freeman at 959 N. 5th St in Silsbee or call 409-385-0410 or 1-800-528-7424



Childress Monument Works, Inc.

We have a Pre-Need Plan “No Interest”

Childress Monument Works, Inc., a full service monument company for 65 years. Family-owned and operated.

Compare our workmanship, quality and prices. Our only business is to serve your memorial needs. We have over 200 in stock to choose from!

Home Location, 4 Mi. South of Woodville on Hwy 69
Visit our website at www.childressmonumentwork.com

(409) 283-2487
Memories Carved in Stone Since 1948
Now accepting most credit cards

Home Instead SENIOR CARE
It's us, it's personal.

\$50.00 off with new service

“Mom’s getting more confused. She forgot to eat again.”

“What if she wanders off? That would be horrible.”

“We need to keep her safe at home. We need more help.”

If you’re struggling to care for a loved one with Alzheimer’s or other challenges with aging, we can help.

HomeInstead.com/216
409.203.2324

M.D. ’s Choice Home Health, Inc. of Silsbee

Providing Quality Health Care Services in the Privacy and Comfort of Home from Seashore to Lakeshore

Licensed Vocational and Registered Nurses
Physical and Occupational Therapy
Social Worker • Home Health Aide
PT/INR Lab Performed in Home

Call **409-386-2273**
Available 24 hours Every Day

- Large Enough to Serve You
- Small Enough for Personalized Care

Blue Cross/Blue Shield Preferred Provider

Kountze Nursing Center

“Why Drive To Beaumont?”

Get What You Need In Kountze

- IV Antibiotics
- Occupational Therapy
- Speech Therapy
- Physical Therapy
- Wound Care
- Skilled Nursing
- Post Surgical Rehab
- Hospice Available

“Highly Ranked Facility by Texas Dept. of Aging and Disability Services Quality Reporting System in Hardin, Jefferson, Liberty and Chambers Counties.”

604 FM 1293 **246-3418** Kountze

Ten warning signs of vision problems in the elderly

Eye problems are more common amongst older people. Aging can induce eye conditions that can cause vision loss. This, however, may be prevented by early detection and regular eye examinations.

Prompt and appropriate action can be taken by understanding the warning signs of eye problems particularly those with sudden symptoms, such as those caused by detached retina or acute glaucoma.

The risk of vision loss may be reduced or avoided by taking action early.

Your own doctor or optician

will refer you to a medical eye specialist if necessary.

WHAT TO LOOK OUT FOR:

Sudden eye pain, redness and nausea

This could mean a sudden but severe bout of narrow-angle glaucoma, which is a serious but treatable condition. Prompt treatment is important to avoid permanent optic nerve damage, which may lead to vision loss.

Sudden single eye vision blur

This may mean the development of exudative age related

macular degeneration (AMD) or a macular hole. Both conditions typically occur with people who are 60 and older. The macula (located in the centre of the retina) allows fine focusing and without proper diagnosis and action, macular degeneration or a macular hole could worsen.

Spots and floaters in the field of vision

These are the typical signs of age-related vitreous detachment, the loosening and the separation of the gel-like interior of the eye from the retina, which is a normal part of aging and generally not something to be worried about.

However, if the symptoms are particularly sudden or associated with ongoing flashes of light they could signify a tear or detachment of the retina.

Treatment of these conditions is urgent and the doctors at Medical Optics can arrange for you to be seen by an appropriate surgeon if necessary.

Surface pain, tearing, or irritation

These are the typical symptoms of dry eye syndrome, a condition that is more annoying than sight-threatening.

However older people may experience severe symptoms due to changes in tear production and often benefit from treatment and counseling on lifestyle changes, an eye doctor can help you with this.

Sometimes severe stabbing

pain like a needle in the back of your eye is not as serious as you might think and can be due to acute dryness of the cornea at the front of the eye.

Double vision

Double vision is an important symptom, which should not be ignored. Often a person only gets double vision when they look in a particular direction and this is also an important symptom.

Double vision can be due to a problem within the eye itself or due to changes in the nerves, muscles or even the brain that control eye movements.

Very rarely double vision can be due to a more serious condition and if you experience double vision you should always attend a doctor without delay.

Dark curtain sensation across the visual field

If this is a temporary symptom, which disappeared after a few seconds or minutes, then it would be important for a person to have a check up with their doctor as this could indicate a mini-stroke.

The doctor would make sure that cardiovascular risk factors such as blood pressure and cholesterol are well controlled.

The doctor may also get some more tests done to out rule any problems with the blood supply to the head, which could be treated.

If the symptom persists a problem with the retina such as a detachment could be causing the visual problem.

If a retinal detachment occurs it is necessary to have re-attachment surgery carried within a few days by a vitreoretinal surgeon.

Therefore you should always report a vision problem of this type to your doctor without delay.

Narrowing of vision field

When the visual field narrows, one can only see what's directly in front.

Glaucoma eventually causes this symptom however the patient often doesn't notice anything until the field of vision is quite narrow. If you notice that your field of vision is narrow in one eye, you should attend an eye doctor for diagnosis and treatment as it could be due to glaucoma or a stroke.

Gradual vision loss, distorted vision

Age related macular degeneration (AMD) is a common eye disease which can cause blurring and distortion of vision.

Modern medical treatments can effectively address certain types of AMD. Please our the section called "Five Biggest Threats To Your Eyesight" for more detailed information on AMD.

Cloudy vision, night light halos, faded colour vision

Blurry or cloudy vision, appearance of halos around night lights and bright colours that appear faded are signs of cataract.

A cataract can be surgically removed and replaced by a tiny plastic lens to allow clear focused vision post-operatively.

If you drive a car then it is necessary to remove the cataract at a relatively early stage.

However if you are elderly and don't drive and if you can currently see enough to watch television and read, then you can postpone the operation indefinitely or until the blurring really begins to annoy you.

You yourself can make the decision on the time for surgery and the surgeon will always fit in with your wishes.

Blurred vision in diabetics

Most people know that diabetics are at a particular risk of problems with their eyes, especially as they get older.

If you are diabetic you should visit an eye doctor if you notice any changes with your eyes.

It is important for diabetics to control their blood sugar levels as best possible and to engage fully with their own doctor and/or endocrinologist with respect to achieving this.

Good blood sugar control is the most important factor in preventing diabetic eye problems.

Diabetics should have the retina of their eyes examined once yearly assuming there are no particular problems. This is best done by an eye doctor (ophthalmologist).

Diabetic Retinopathy Screening

This is a process whereby the back of your eye is photographed once a year in the National Diabetic Retinopathy Screening Programme which has recently been introduced in Ireland.

This is useful for diabetics who do not already attend an eye doctor.

At Medical Optics not only will your eyes be photographed but you will have a complete eye examination carried out by one of our specialists who will outrule any complications of diabetes in your eyes.

It is recommended that this is carried out annually or every two years depending on your risk. This service is free for medical card holders at Medical Optics.

General

Reduce the risks of vision loss by detecting the early signs of eye problems. Healthy lifestyles with good nutrition and no smoking are crucial factors that help to protect the eyes as we age.

Head to Toe Family Healthcare

"Providing Caring Competent Healthcare Close To Home"

Walk-Ins Welcome

URGENT CARE • Same Day Appointments

Services Include:

- Physicals
- Chronic Disease
- Sick Visits
- Weight Loss
- School physicals
- Minor injuries
- Well-person checkups
- Blood Pressure
- Diabetes
- Thyroid

Barri Hoffman Gillette, FNP, BC • Amber Dupree, FNP

Hours: Monday-Wednesday 8am - 5pm • Thursday 8am - 6pm • Friday 8am - 2pm

409-385-6500

Located at 735 N. 5th St. in Silsbee

Village Creek Rehabilitation & Nursing Center



Wishing Happy Birthday To

Grace Buffington

Celebrating 103 Years of Life

Staff and residents honored her with cake and well wishes.



Your local leader in nursing & rehabilitation services.

705 North Main Street Lumberton, Tx 77657
755-0100 • Fax 755-4200
 Affiliated with Nexion Health ~ www.nexion-health.com





Odyssey HospiceSM

a Gentiva[®] company



Local Hospice for the Terminally Ill and Their Families



Medicare-Medicaid Certified • Private Insurance

- 5 Star Program
- Physician Care
- Registered Nurses
- Home Health Aides
- Pastoral Care
- Counseling
- Social Work
- Volunteers
- Registered Dietitians
- Bereavement Services
- Nurses Available 24 Hours

Serving Southeast Texas and Surrounding Areas
*Serving Patients In Hospitals • Private Residences
 Nursing Facilities Assisted Living • Personal Care Homes*

Beaumont

Phone: 409-212-0020
 550 Fannin St • Suite 1230 • Beaumont, TX

Jasper

1-409-384-4336
 902 N Wheeler Street • Suite 1 • Jasper, TX

www.odshealth.com

"Improving the Quality of Life"

VALENTINE

From Section 3, Page 3

kiss.

While I'm sure there is not a single day that passes without his memory in her mind, I imagine Valentine's Day brings some added weight to her sorrow.

My grandmother's story is unfortunately not unique. Many seniors are widowed or living alone, and finding a special way to show them some extra love on Valentine's Day can make a big difference.

Here are some ways you can fill a senior's Valentine's Day with extra love:

- Have flowers delivered, or deliver them yourself if you live nearby
- If your loved one has old letters from the love of their life, dust them off and read them together
- A special treat is even sweeter when it's shared, so sit awhile and share something yummy



thing yummy

- Get the kids involved – seniors love homemade valentines, even better if they include a recent photo
- Share a special breakfast or lunch and stories of your loved one has shown they love you
- Frame an old photo of you with your senior, include a card about how much they

mean to you

- Continue a tradition they may have shared with their late spouse
- Be there –your time and presence can add happiness to a day that may have otherwise been lonely

There are so many ways to bring happiness to hearts of seniors on Valentine's Day.

OUR CARING STAFF MAKES THE DIFFERENCE

You'll find many nursing homes that, like ours, are clean and comfortable. What sets us apart is the caring and dedication of every single member of our staff.

Silsbee Oaks prides itself in providing a tastefully decorated surrounding and homey atmosphere.

- 160 Bed Facility • 24-Hour Nursing Care • Daily Activities
- Full time Social Worker • Reality Therapists • Physical Therapy
- Speech Therapy • Occupational Therapy • Out-Patient Therapy
- Home Cooked Meals • Special Needs Secure Unit

Silsbee Oaks Health Care accepts private, medicaid, medicare and all other levels of care.

Contact Anna Tanton, Administrator or

Christina Hernandez, Social Worker for more information about Admissions

Silsbee Oaks Health Care, L.L.P.

920 E Ave L

385-5571

Silsbee

Anna Tanton, Administrator and Staff