

THE MORNING SUN

THURSDAY, SEPTEMBER 29, 2022 | 75¢

MORNINGSUN.NET

Overlooked overpass

Citizen concerned about condition of Joe Saia Overpass

By **Dustin R. Strong**
Morning Sun Staff

PITTSBURG, Kan. — Frontenac resident and Pittsburg business owner Gary Edwards made the circuit on Tuesday, visiting both the Crawford County Commission in Girard and the Pittsburg City Commission. Edwards raised concerns about the condition and structural integrity of the Joe Saia Overpass, one of the major arteries that link Pittsburg and Frontenac, and that Edwards travels across multiple

times a day. According to Edwards, the overpass has been deteriorating for more than a decade. He says there are chunks of concrete as big as three-foot in diameter missing on the approaches to the bridge that expose structural rebar, and signs of shoddy repair work. “On the south side,” Edwards said, “a big chunk was cut out by Crawford County, why, I don’t know, but it was patched back in with asphalt. And anyone who knows anything about asphalt and

concrete, asphalt’s going to give.” Maintenance responsibilities for the overpass were formerly shared by Frontenac and the county. However, Frontenac has annexed land on the south side of the overpass, putting it entirely within Frontenac’s city limits, and making the city primarily responsible for the bridge’s upkeep. Edwards said he invited Pittsburg Director of Public Work and Utilities Matt Bacon to inspect the bridge, but was told the bridge was not his responsibility. “Our objective is to get it fixed,” said County See **OVERPASS**, Page 6A



Buckling asphalt on the southern approach to the Joe Saia Overpass. DUSTIN R. STRONG / THE MORNING SUN

Greenbush to present ‘Paint the Town’

By **Antjea Wolff**
Morning Sun Staff

PITTSBURG, Kan. — Art and play are important parts of a child’s development, which is why the Greenbush Education Service Center will be hosting an event for families with children ages 0 to 5 called “Paint the Town” from 9 to 11 a.m. Saturday, Oct. 1 at the playground of the Family Resource Center, 1600 N. Walnut in Pittsburg. This event is designed to support messy play through painting and exploring. There will be several different stations featuring activities such as sidewalk chalk, finger painting, rock painting and others. There will also be a station with books that teach art-related lessons such as the names of different colors and how to mix them to create new colors. Another station will have items like cookie cutters for the children to trace as well as stamp pads and stamps. Greenbush Community Liaison Dee Dee LaFever, who used to teach early childhood special education, said this event will be a good way to get out into the community and meet families and their children. “These little kids are my passion,” she said. “And I’m excited to be interacting with the little kids again and doing hands on stuff with them again.” LaFever said attendees may come and go as they please, and wearing washable clothes is encouraged.



Cherokee County Sheriff David Groves, left, formally endorses Republican gubernatorial candidate Derek Schmidt, right, during a campaign stop in Pittsburg. DUSTIN R. STRONG / THE MORNING SUN

Groves endorses Schmidt for governor

Grants for Pittsburg organizations announced

By **Dustin R. Strong**
Morning Sun Staff

PITTSBURG, Kan. — Cherokee County Sheriff David Groves came to the local Republican Party headquarters in Pittsburg Wednesday to formally endorse current Republican Attorney General

Derek Schmidt for governor. Groves, a registered Democrat, said he had high hopes about Gov. Laura Kelly four years ago but those hopes have since been dashed, which is why he is crossing party lines to endorse Schmidt. “Kansans deserve better,” said Groves, citing the rising

rate of violent crime in Kansas. “Kansans deserve a governor who has a long-proven track record of supporting law enforcement.” Groves also derided the Kelly administration for failing to improve the state’s foster care and mental health systems. Schmidt made a few remarks about what his tenure as governor would look like. As attorney general, Schmidt said he made recommendations to make schools safer and

encourage kids to report incidents without resorting to dialing 911 as a default. Schmidt said his recommendations were met by Kelly wanting to wait for Congress to act first. Schmidt went on to list various law enforcement associations who have already endorsed his campaign. “I am the law-and-order candidate in this race,” Schmidt said. “I am dedicated to leaving this state safer than See **GROVES**, Page 8A

iCraft, you craft, we craft

Library celebrates 10 years of creative program

By **Antjea Wolff**
Morning Sun Staff

PITTSBURG, Kan. — After a decade of providing the Pittsburg community with a variety of craft activities, the Pittsburg Public Library celebrated the milestone of its iCraft program on Wednesday afternoon. iCraft was first developed as a teen program with the help of former library employee Janet Dutton, who provided a multitude of supplies, and ideas for different projects. The first proj-

ect the library staff led was one where attendees has the opportunity to make smash books. For participants to make a smash book, the staff took out the pages of old copies of Reader’s Digest, so that only the hardback cover was left. The patrons were able to choose their cover, punch holes in it, and use metal rings or ribbons to bind recycled paper inside of it. Supplies to decorate the cover and pages were also provided. “Some people call a smash book a junk jour-

nal,” Pittsburg Public Library Assistant Director AnnDee Peterson said. “But the idea is that you just stick anything in it like concert tickets or a list or a drawing. So its kind of the opposite of a scrapbook. To me, scrapbooks are intimidating because you need square edges and all that, and so this appeals to me because you just kind of make it up as you go.” When library patrons learned about the first iCraft, Peterson said, many adults told the staff that they wanted to participate. So, the library opened the program up to ages 6th grade See **ICRAFT**, Page 8A

Fire safety awareness



With National Fire Prevention Week coming up from Oct. 9 to 15, the Pittsburg Fire Department has been visiting local elementary schools to talk about fire safety. Pittsburg firefighters are shown here talking to students this week at Westside Elementary School. COURTESY PHOTO / PITTSBURG FIRE DEPT

Obituaries
• Charles J. Denham, 72
• Velma Swento, 78, Girard, KS

Cashmere Comes From Goats
Former PSU professor to read from debut novel.
Page 2A

Overtuned
A successful replay challenge secures Missouri Southern's victory at Fort Hays State.
Page 1B

Volume 122 | No. 503
To subscribe 620-231-2600
©2022



COMMUNITY

Obituaries

Velma Irene Ard Swento

Velma Irene Ard Swento, 78, passed away Sept. 9 at about 1 p.m. She was at the Via Christi Hospital for tests. Velma was a lot sicker than we thought.

Velma was born to Henry and Rebbecca Ard in Girard, Kansas, on June 18, 1943. Velma was raised in Girard.

She was married to Jim Mynett. They had four children, Marilyn Kay, donna Rae, Kathy Gaye, and Ronnie Jay Mynett.

After she and Jim divorced, she moved to Arizona, where she married Monty Loveless. They had one son, Monty Ray. She lived in Arizona for about 50 years.

After she and Monty got a divorce, she married Jack Swento. They were married for about 25 years until Jack passed away.


Velma has 15 grandkids and 29 great-grandkids.

Velma did not want a service. All she wanted was to be taken back to Phoenix and buried by Jack, so that's what was done.

They had a small service last Monday and burial for her there. Velma was preceded in death by two sisters, Verna Badberg and Shirley Neal, two brothers, Merle Ard and Danny Ard, as well as several nieces and nephews.

Velma is survived by her children, grandchildren, several nieces and nephews, and one sister, Mabel of Frontenac.

Rest In Peace, sister. I love you.



Charles J. Denham

Charles J. Denham, age 72, passed away Friday, Sept. 23, 2022, at 8:18 p.m., surrounded by loved ones.

Chuck was a good man with a heart of gold. He worked hard all his life. He learned metallurgy at McNally's and the aluminum permanent mold process at Hix Corporation. In 1987 he started his own aluminum manufacturing business, Denco Aluminum. In 2015 he retired, leaving his son, Tyler, to run the business. Even in retirement, Chuck could be found at the foundry almost daily.

Chuck is survived by two sons, John Stacy and Tyler James (Carol); two grandchildren, Madison and Lance, who were his everything; and his companion, Bonnie Guinotte.

At Chuck's request, his remains have been cremated, and no service shall be held.

Former art professor to read at PSU from debut novel

Special to the Morning Sun

news@morningsun.net

PITTSBURG, Kan. — Writer and former Pittsburg State University art professor S. Portico Bowman will return to campus on Monday, Oct. 3, for a reading of her debut novel, “Cashmere Comes from Goats.”

The reading will begin at 7 p.m. in the Governors Room of the Overman Student Center. The event is free and open to the public; it is sponsored by the PSU Distinguished Visiting Writers Series and the Student Fee Council.

Bowman taught for 20 years in Kansas, where she worked until recently as an art professor, art writer, and gallery director in Porter Hall at PSU.

English Professor Casie Hermansson praised the book.

“The novel tells an engaging — and at times urgent — story, but its real dazzle is in the moment

by moment where we all live,” Hermansson said. “Portico's prose is wonderful and does every one of those moments justice.”

English Professor Chris Anderson is looking forward to seeing Bowman's creativity in a new medium.

“Creativity takes many forms, and it's not easy to master more than one art form, but Portico Bowman has done it,” he said. “I'm eager to hear more about how her talent for visual art and her talent for writing fiction intersect.”

Bowman grew up on the Canadian Prairies and has lived in Massachusetts, California, and Hawaii.

She received her MFA degree in ceramics at UT Knoxville in Tennessee and is a graduate of the Humber School for Writers in Toronto.

She recently was awarded a \$25,000 Canada Council for the Arts Research and Creation grant for her second book, “Would You

City commission approves funding for treatment and stabilization center

By Dustin R. Strong

Morning Sun Staff

PITTSBURG, Kan. — Michael Ehling, executive administrator for the Crawford County Mental Health Center, appeared before the Pittsburg City Commission on Tuesday to seek approval of a \$400,000 grant for infrastructure improvements while building the new Addiction Treatment Center and Crisis Stabilization Unit on the Pittsburg campus of Community Health Center of Southeast Kansas (CHCSEK) at 30th and Michigan.

Approval of the grant was recommended by the Economic Development Advisory Committee (EDAC) on the condition the funds be dispersed as reimbursements upon completion of the new facility.

According to Ehling, the purpose of the new facility is to expand substance use disorder (SUD) services and provide medication-assisted treatment (MAT). It will expand services to include 24 residential and four social detox beds, house six beds for the CSU, and create a collaborative person-centered care facility. The total cost of the facility is \$6,550,000, of which 94 percent has already been secured through grants and private donations.

Ehling also said that

Crawford County Mental Health has recently been approved for a \$4 million grant by the Substance Abuse and Mental Health Services Administration (SAMHSA), payable over the next four years.

Mayor Cheryl Brooks asked if the new facility will be a “lock-down” facility or if patients will be allowed to come and go, and where they go from there.

“It is not an involuntary type of circumstance,” said Ehling. “We provide case management and support services to get them linked up to services they need, whether that's therapy or medication. If they want to go back home, we can serve them in their home as well.”

According to Ehling, the new center will create 30 new jobs, prompting Commissioner Ron Seglie to ask, “Where are you going to find the personnel?”

“We are using several strategies,” Ehling said. “We have case managers who want to become therapists and we are scholarshiping them to become master's level commissions. Case managers are not quite so difficult to find. We've partnered with Pitt State's [Master's in Social Work] program and we have a lot of interns and practicum students who we cultivate relationships with.”

Ehling said he hopes to break ground in January.

CLUB NOTES

Thursday, Sept. 29

AI-Anon

As COVID-19 and social distancing has curtailed AI-Anon meetings, there is now a weekly Zoom AI-Anon meeting at 7 p.m. on Thursdays. For more information call 620-704-1309 or email jtknoll@swbell.net.

TOPS Club Inc.

TOPS Club Inc. (Take Off Pounds Sensibly), the nonprofit weight-loss support organization, meets weekly on Thursdays at 9 a.m. at Crawford County Historical Museum, located at 651 S Highway 69, Pittsburg. The meeting is open to the public, ages 7 and up. Your first visit to any TOPS meeting is free.

TOPS #1186

The new Pittsburg TOPS #1186 chapter meets Thursdays at the Knights of Columbus Towers at 700 N. Pine. Weigh-ins begin at 9:30 a.m. and the meeting starts at 10 a.m. Visitors are always welcome and your first visit is free. Call 620-724-4342 or 620-687-1788 for more information.

Co-dependents Anonymous

Co-dependents Anonymous meets weekly at 6 p.m. Thursdays as an audio-only conference call meeting. Please call 620-231-6977 for information about how to join.

Pittsburg Noon Kiwanis

Pittsburg Noon Kiwanis will meet at noon on Thursday, Sept 29, at Ascension Via Christi Hospital in DePaul Hall. Kiwanis Officers for 2023 will be installed. Discussion and planning for the return of the annual Pancake fundraiser will continue.

Friday, Sept. 30

Dinner at the Arma American Legion

The Arma American Legion, located at 512 E Main, is open Friday nights serving good food and drinks. The kitchen opens at 5:30 p.m. for dine-in or carry-out. Customers may call 620-347-8520 to place an order.

Pittsburg Parks & Rec Senior Bingo

September 30 Theme– “Birthdays.” Each week features a new theme with fun activities to enjoy. Senior Bingo starts at 1 p.m. at Lincoln Center, 710 W. 9th St, Pittsburg. Snacks and break time is 2 p.m. Cost: \$0.50 per meeting, \$0.25 per card. For additional details, call the Pittsburg Parks & Recreation office at (620) 231-8310 or stop by Lincoln Center at 710 W. 9th St. in Pittsburg.

Saturday, Oct. 1

Scrabble Club

Scrabble Club will meet Saturday, Oct. 1, from noon to 4 p.m. at Pittsburg Public Library. New players are welcome.

Sunflower Kiwanis

Don't throw away those aluminum cans! Bring them to Dillon's parking lot on Saturday, where Sunflower Kiwanis members will be collecting from 8 a.m. to noon. Cans are collected the first Saturday of each month.

Engagement rings • Gold and Silver Dealer • Gifts • \$5 Batteries



BUD'S Jewelry



Private appointments and financing plans available. Contact us today for details.

701 N Broadway, | Pittsburg, KS 66762
(620) 230-5367



Bath-Naylor Funeral Home & Crematory

Pittsburg
522 S. Broadway
Pittsburg, KS 66762
620.231.4700

Weir
104 W. Main St.
Weir, KS 66781
620.369.8266

Columbus
611 S. East Avenue
Columbus KS, 66725
620.429.4114


www.bathnaylor.com



Subscribe to the area's Local newspaper

Call Today!

620-231-2600



Brenner Mortuary

Funeral & Cremation Services
114 E 4th St. Pittsburg KS 66762

Edward Leroy Nutt

Service: A graveside service will be held Saturday Oct 1st at 11 a.m. Service will be located at McCune City Cemetery. A visitation will be held on Friday September 30th, from 6:30 p.m. to 7:30 p.m. at the Brenner Mortuary.

CARSON•WALL FUNERAL HOMES

PARSONS • ST. PAUL • ERIE • GIRARD

WWW.WALLFUNERALSERVICES.COM



THE MORNING SUN

PUBLISHER

Larry Hiatt
lhiatt@morningsun.net

EDITOR

Jonathan Riley
jriley@morningsun.net

BUSINESS

Kelly Mitchell
kmitchell@morningsun.net

Alyssa Heinssen
aheinssen@morningsun.net

SPORTS EDITOR

Jim Henry
jhenry@morningsun.net

STAFF WRITERS

Antjea Wolff
awolff@morningsun.net

Aaron Pyle
apyle@morningsun.net

Dustin Strong
dstrong@morningsun.net

SPORTS WRITERS

Dashuan Vereen
dvereen@morningsun.net

Sam Kombrink
skombrink@morningsun.net

PHOTOGRAPHY

Seth Potter

ADVERTISING

Betsy Freeman
bfreeman@morningsun.net

Angelica Abshire
aabshire@morningsun.net

Lydia Handshy
lhandshy@morningsun.net

PRODUCTION

Brad Stout
bstout@morningsun.net

Isabella Crumpacker
icrumpacker@morningsun.net

DISTRIBUTION

Sandy Collins

Covering Pittsburg and Southeast Kansas since 1887

701 N. Locust (P.O. Drawer H) Pittsburg, KS, 66762

The Pittsburg Sun — Established July 11, 1915

Published Tuesday through Saturday, except on all U.S. postal holidays.

The Morning Sun USPS 434-180 is published Tuesday through Saturday by Pittsburg Publishing Company LLC, 701 N. Locust, Pittsburg, KS 66762. Periodicals Postage Paid at Pittsburg, KS 66762. POSTMASTER: Send address changes to: The Morning Sun, PO Box Drawer H, Pittsburg, KS 66762

Lobby hours: Monday to Friday 8:30 a.m.–5 p.m.
Phone: 620-231-2600 • **Questions?** Contact The Morning Sun at news@morningsun.net
Online: www.morningsun.net

If you miss your paper, please call between 8 a.m. and 1 p.m. Monday through Friday.

SUBSCRIPTION INFORMATION

(RATES DO NOT INCLUDE SALES TAX)

	In-county	Out-of-county	Out-of-state	Electronic-only
1 year	\$158.07	\$182.16	\$226.76	\$87.19*
6 months	\$80.33	\$94.69	\$105.00	\$54.49*
3 months	\$41.11	\$47.76	\$60.00	—
1 month	\$14.36	\$16.77	—	\$8.71*

*includes tax

Please contact the appropriate email below according to the subject of your inquiry:

Display ads — advertising@morningsun.net Obituaries — obits@morningsun.net

Classified ads — classified@morningsun.net News tips and press releases — news@morningsun.net

NEWS

Tulsa prosecutor recovering after being stabbed by daughter

By **KEN MILLER**
Associated Press

An Oklahoma prosecutor who police said was stabbed by his adult daughter, on Wednesday called for more state funding for mental illness programs. “(Tuesday) my family endured one of the toughest days in our lives,” Tulsa County District Attorney Steve Kunzweiler said in an approximately nine-minute statement to reporters before leaving without taking questions. “The elected leaders of our state, the elected leaders of our state Legislature need to make this a priority,” and increase funding

for mental health treatment, said Kunzweiler, 60, who showed no visible sign of the attack. Jennifer Kunzweiler, 30, was arrested following the stabbing at Kunzweiler’s home Tuesday, Tulsa Police Chief Wendell Franklin said on Twitter. “Tulsa Police has criminal jurisdiction and will work this case like all other cases,” Franklin wrote. Police Capt. Richard Meulenberg said Wednesday that Jennifer Kunzweiler was taken to a hospital after her arrest at the family home, where she also lived. She was treated for self-inflicted cuts sustained before she stabbed

her father in the arm and midsection. A motive for the stabbing remained under investigation, according to Meulenberg. “We know there is some mental illness here,” Meulenberg said, “but we haven’t interviewed her” to determine a motive. Jennifer Kunzweiler remained hospitalized Wednesday and will likely face a charge of domestic violence with a dangerous weapon when released, Meulenberg said. Meulenberg said Tulsa police have no record of previous criminal contact with Jennifer Kunzweiler and online court records

show no charges on her record. Steve Kunzweiler, a Republican who was first elected district attorney in 2014 and won reelection in 2018, is unopposed for reelection in November. The stabbing is the third of an elected official in Oklahoma in recent years. Tulsa District Judge Sharon Holmes was wounded in a stabbing at her home by her adult daughter, Adrienne Smith, in 2019. State Labor Commissioner Mark Costello was killed in a 2015 when he was stabbed in a restaurant parking lot in Oklahoma City by his adult son, Christian Costello, in 2015.

Europe ramps up energy security after suspected sabotage

By **LORNE COOK**
and **JAN M. OLSEN**
Associated Press

BRUSSELS (AP) — European companies are ramping up security around pipelines and energy prices are climbing again as the suspected sabotage of two pipelines that deliver natural gas from Russia underscored the vulnerability of Europe’s energy infrastructure and prompted the EU to warn of possible retaliation.

Some European officials and energy experts have said Russia is likely to blame for any sabotage — it directly benefits from higher energy prices and economic anxiety across Europe — although others cautioned against pointing fingers until investigators are able to determine what happened.

Russia has sharply curtailed natural gas shipments to Europe in retaliation for sanctions that the West put in place after its invasion of Ukraine. On Wednesday, Russian energy giant Gazprom increased the pressure, threatening on Twitter to cease dealing with a Ukrainian company that controls one of the two remaining pipelines that ship Russian gas to Europe.

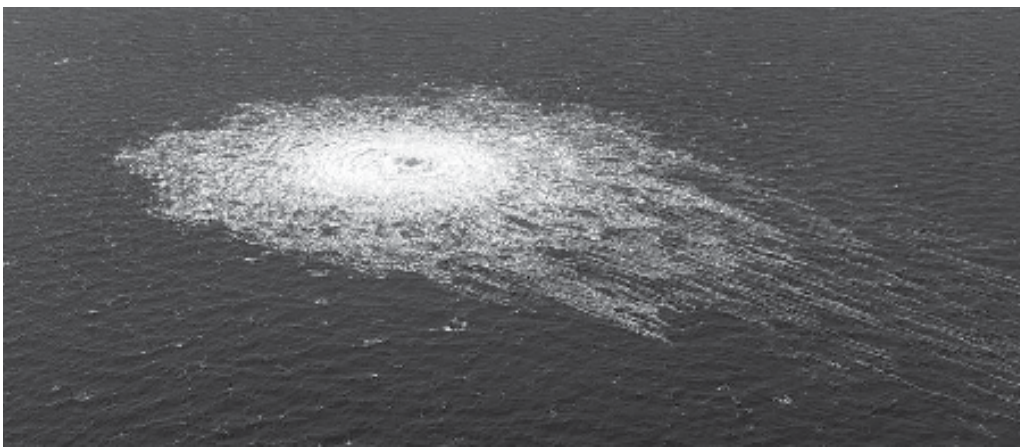
Coming on top of the apparent sabotage to the Nord Stream gas pipelines, “that means a major escalation and readiness to escalate,” said Agata Loskot-Strachota, senior fellow in energy policy at the Center for Eastern Studies in Warsaw.

Seismologists say explosions rattled the Baltic Sea before unusual leaks were discovered Tuesday on the two underwater pipelines running from Russia to Germany.

“All available information indicates those leaks are the result of a deliberate act,” EU foreign policy chief Josep Borrell said in a statement on behalf of the bloc’s 27 members. “Any deliberate disruption of European energy infrastructure is utterly unacceptable and will be met with a robust and united response.”

Three leaks were reported on the Nord Stream 1 and 2 pipelines, which were filled with natural gas but not delivering fuel to Europe ever since Russia stopped the flow to apply economic pressure on the continent.

Kremlin spokesman Dmitry Peskov said allegations that Russia would have sabotaged its own pipelines were “predict-



A large disturbance in the sea can be observed off the coast of the Danish island of Bornholm Tuesday, Sept. 27, 2022 following a series of unusual leaks on two natural gas pipelines running from Russia under the Baltic Sea to Germany have triggered concerns about possible sabotage. Danish Prime Minister Mette Frederiksen says she "cannot rule out" sabotage after three leaks were detected on Nord Stream 1 and 2.

DANISH DEFENCE COMMAND VIA AP

able and stupid.”

Yet as fears of further disruptions loomed, European energy companies and governments said Wednesday they have already begun to fortify energy infrastructure.

Norwegian state oil company Equinor said it raised the level of preparedness on all of its facilities, according to national broadcaster NRK. Norway’s energy exports have surged as European countries scramble to find alternatives to Russian supplies.

“What happened in the Baltic Sea is very serious,” Norwegian Prime Minister Jonas Gahr Støre told a press conference in Oslo.

Before the pipeline leaks discovered Tuesday, natural gas prices in Europe had dropped from their all-time peak in late August because countries have filled storage facilities to 87% of capacity ahead of winter, when demand for the fuel soars to heat homes and generate electricity.

But Europe’s natural gas prices have spiked about 14% since the pipeline ruptures rattled nerves about energy security.

Natural gas prices are roughly three times higher than just before Russia invaded Ukraine. An energy crisis driven by the war is threatening rationing, business closures and recession in Europe. The continent’s ability to get through winter will be deeply affected by how cold it is and whether they can find supplies to make up for what’s been lost from Russia.

Another major source of Russian income — oil — has fallen sharply in price from June peaks of over \$120 per barrel. On Wednesday, Brent crude futures traded at \$87.40 per barrel, up more than 5% since Monday.

The extent of the pipeline damage, along with

the political ramifications, raises serious doubts about the future of the Nord Stream project, which was launched so that Russia could deliver gas directly to Germany. The project has been heavily criticized by the West because it only increased Europe’s reliance on Russian gas imports.

The head of the Danish Energy Agency, Kristoffer Böttzauw, said Wednesday it wasn’t clear when it would be safe for investigators to examine the damaged pipes, which he said are made of 12 centimeter (5 inches) thick steel coated with concrete. The pipelines lie on the seabed between 70 and 90 meters (230 feet and 295 feet) deep.

Sweden’s domestic security agency said Wednesday it was investigating the pipeline ruptures and that it couldn’t be ruled out “that a foreign power is behind it.”

Polish Foreign Minister Zbigniew Rau was more direct, suggesting Tuesday that the leaks could be part of Russia’s campaign to apply pressure on the West for supporting Ukraine.

“The explosions took place very close to Danish territorial waters, but not inside them, because that would have meant NATO territory,” Rau said during a discussion at the Center for Strategic and International Studies in Washington.

“This could mean that someone is trying to intimidate the countries of the Baltic Sea,” he said.

The U.N. Security Council has scheduled an emergency meeting Friday afternoon at Russia’s request to discuss the suspected pipeline sabotage. Meanwhile, the country’s

security service, the FSB, said it has opened a criminal investigation into an “international act of terrorism” after the explosions.

Even with eyes turning toward Russia, Anders Puck Nielsen, a researcher with the Center for Maritime Operations at the Royal Danish Defence College, said that it would be hard to establish who is responsible, and just as tough to prevent similar incidents.

“We have pipelines, we have communication cables like the internet. We have just power lines running on the seabed. All of this is vulnerable and our societies are very dependent on it. And it’s very, very difficult to monitor what’s going on and to prevent a case of sabotage,” he told The Associated Press.

A spokesman for German Chancellor Olaf Scholz declined to respond to media reports that the CIA had warned Germany earlier this summer that the pipelines could be attacked. “But let me say that according to our findings, there is no evidence that there is a natural cause for the pressure drop in the pipelines,” spokesman Steffen Hebestreit told reporters.

Simone Tagliapietra, an energy policy expert at Bruegel, said Russia’s latest threat to disrupt natural gas that flows through Ukraine is not having as much impact as it might have hoped.

“Its announcements are now having lower impact on prices, as both market and governments have internalized and got prepared for a full interruption of Russian gas to Europe,” Tagliapietra said.

AREA EVENTS

Thursday, Sept. 29

Kansas Flyways: Understanding Birds’ Movements

The Sperry Galligar Audubon invites the public to their special presentation Kansas Flyways: Understanding Birds’ Movements, presented by Dr. Alice Boyle (KSU) at 7 p.m. in Yates Hall at Pittsburg State University. This event is free and open to the public.

Friday, Sept. 30

Talking Heads Discussion Group

The Talking Heads discussion group will meet at 9 a.m. every Friday morning at the Pittsburg Public Library. Using The Great Courses Series from The Teaching Company, participants will watch a 30-minute DVD lecture and the group discusses it.

Sperry Herbarium Open House

An open house is planned from 3 to 6 p.m. for the T.M. Sperry Herbarium at Pittsburg State University to celebrate its newly renovated space and facilities in Room 212 Hartman Hall. The event will feature a short presentation by Director Neil Snow, a professor of biology, on the recent completion of a grant from the National Science Foundation.

Friday Music on the Lake

The Friends of Crawford State Park are once again hosting live music at Crawford State Park, Farlington, Kansas. Each Friday, music will be from 6 p.m. to 8 p.m. at Lake View Café, on the northwest end of the lake at Crawford State Park. This Friday, Stone Country will be performing. Attendees are encouraged to bring their lawn chairs.

Global Fest

The International Student Association, in conjunction with the Office of International Programs and Services, will host Global Fest - an international night market - from 6:30 to 8:30 p.m. Friday, Sept. 30 at Lindburg Plaza, at the intersection of Lindburg and Elm Streets. There will be a variety of country and ethnic booths with street food, wares, games, music, and more. It will be an interactive event exploring the many regions of the world in a lively open-air market atmosphere. Food samples will be \$1 each (cash). The event is open to the public.

Trout Fishing in America

Olive Street Presents a performance by Trout Fishing in America Friday, Sept. 30 at the Bicknell Family Center for the Arts. All seating general admission. \$20 advance tickets, \$25 day of show and at the door. Doors open at 6 p.m. and music begins at 7 p.m.

Saturday, Oct. 1

Pittsburg Farmers Market

Vendors offer seasonal fruits and vegetables, meats, baked goods, and more. Local artisans sell handmade crafts. The farmers’ market accepts EBT/Vision/SNAP cards. Saturdays from 8 a.m. to noon April 16 to Oct. 30 at the Farmers’ Market Pavilion, 119 E. 11th St., Pittsburg.

Fall Brawl Demolition Derby

A Fall Brawl Demolition Derby will take place on Saturday, Oct. 1 at the Crawford County Fairgrounds at 100 South 106th St. Girard. The pits will open at 9 a.m. and the show starts at 2 p.m.

Monday, Oct. 3

Story Time at the Library

The Pittsburg Public Library invites kids and families to the library at 6 p.m. on Mondays for a story time. The program is free and no registration is required. Story time takes place at the library at 308 N. Walnut Street.

Tuesday, Oct. 4

Art Exploration Instruction

Join Gallery artists Pat Glick and Laura Wright every Tuesday afternoon for a fun time working on citizens’ own projects or art from 12:30 to 2 p.m. at ArtForms Gallery. Participants are asked to bring their own materials. This event is free and open to the public.

PATRICK SCHMIDT
FOR CONGRESS ★ KS02
Check Him Out
[@patrickforkansas.com](https://patrickforkansas.com)
Paid for by: Patrick for Kansas

David Cowan ELECTRIC
INSURED • BONDED • LISCENSED
Cell: (479) 957-0682 Cowan electric@yahoo.com
davidcowanelectric.com

Neon Moon TATTOO
Custom Tattoos
Andrew Wagenaar-Artist/Owner neonmoontattoos.com
Michelle Wagenaar-Marketing/Owner neonmoontattoo@gmail.com
113 East 3rd St. Ste A Pittsburg KS facebook.com/neonmoontattoos
620-404-4634

Karen's Pooch Parlor
Dog Grooming
Call 620-231-0720
to schedule your appointment TODAY!
Follow us on Facebook to learn more @KPoochParlor

Ervin's Tree Service
Equipped With Bucket Truck
Trimming Removal
Trees, Brushes, Stump Removal
We do yard clean up
Free Estimates
We are Insured
Ervin Kichler, Owner
Call 620-724-0121
Mona 620-724-2690

OPINION PAGE

HOW TO SUBMIT LETTERS TO THE EDITOR

Letters must be original, up to 250 words and signed. Include the writer’s address and phone number for verification. Letters may be edited. Send letters to: The Editor, 701 N. Locust St., Pittsburg, KS 66762, news@morningsun.net, or fax to 620-231-0645.

LITTLE BALKANS CHRONICLES

Autobiography of Laurence Paul Wilson, part 11



J.T. Knoll

news@morningsun.net

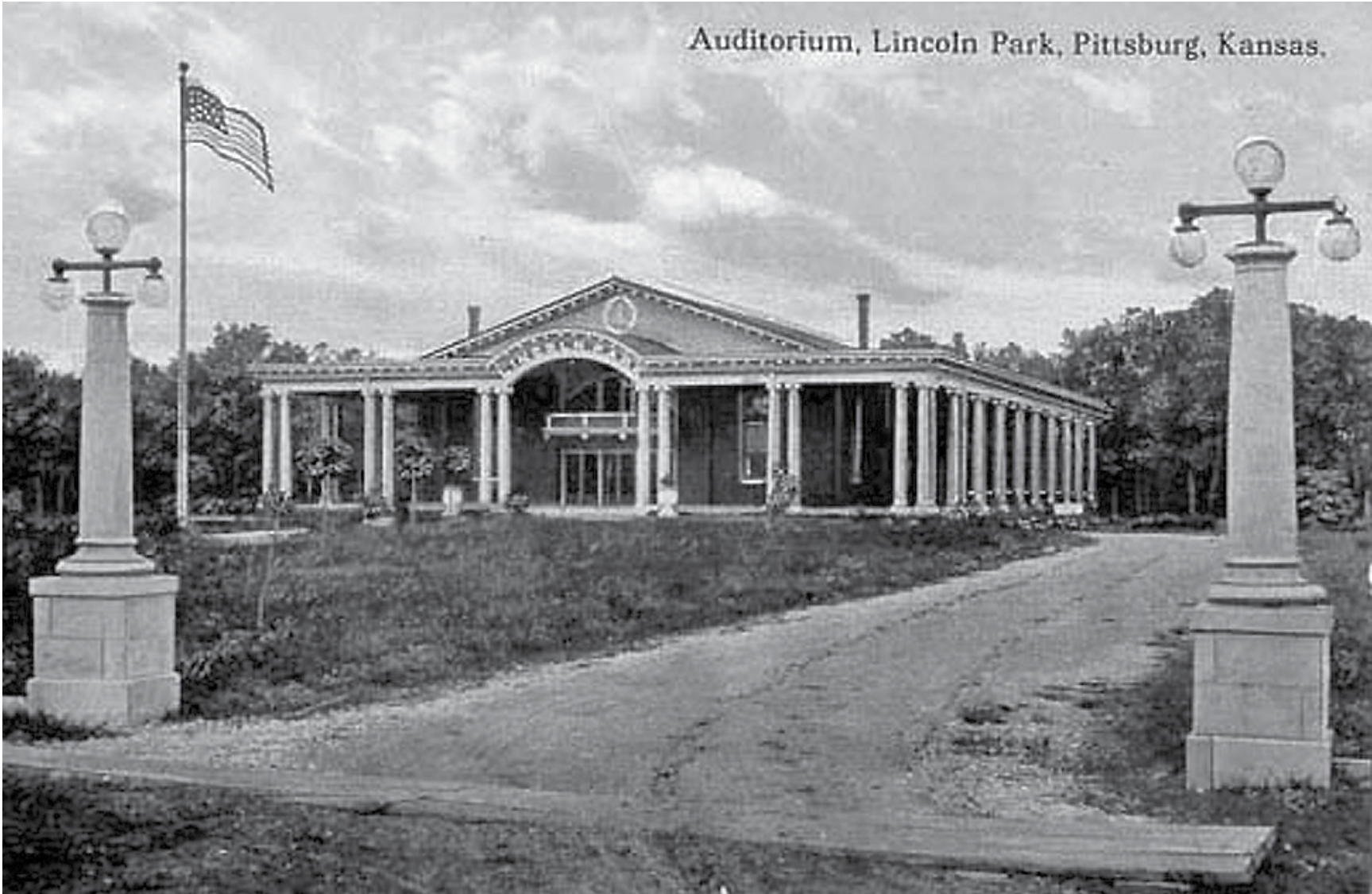
Here’s the next excerpt from “FROM POVERTY TO PRESTIGE, the Autobiography of Laurence Paul Wilson.” In this one, he reflects on being a student at KSTC in Pittsburg. — J.T.K.

The highlight of the year was the annual formal party held in Lincoln Auditorium with a big jazz band from K.C. There was a smaller breakfast dance the next morning, so it was quite a weekend.

Most of the boys were able to get their hands on some bootleg whiskey but thank goodness I never knew of anyone getting in a car accident nor any kind of trouble because of alcohol.

The formal dance was always on Friday night. The revelry went on all night, but I had to be back in Girard to go to work on Saturday morning with all kinds of dire predictions ringing in my ears from my mother who hated me partying. I had an aunt and uncle who lived in Pittsburg — Aunt Bee and Uncle Chris — my mother’s sister who I could have stayed with if I needed help of any sort, but I never did. I had the feeling that they never would have let me forget about it.

Also, the Gilmores who were distant relatives lived in Pittsburg. Ed Gilmore was always drunk. Mamie Gilmore was extremely nice and always wanted young people to have a good time. They had a houseful of children: Marguerite, Cleo, Ethel, Christine, Kenneth



COURTESY PHOTO / PITTSBURG, KANSAS MEMORIES

and Edward. They were good kids. No ambition to go to college — probably looking all the time for a wife or husband.

I went out for track all four years. The coach was G.W. Weede. He had a national reputation and didn’t want to be bothered with you unless you were a winner. I just was not fast enough. I lettered in track at Girard High School but I could not do it in college. The stars of the team were: Laurence Swisher, Delbert White, Kermit King, Ralph Brown, Donald Dunn, Robert Caldwell, Lester Kirk, Wayne Campbell, Neil Pierce, O.B. Allen,

Elmer Carson and Bidwell Bedillon. All of them were nice guys.

In 1935, at an all-school dance in the Gymnasium, Swisher danced with the white girlfriend of one of his white teammates on the track team. He and his girlfriend, Rosella Caldwell, were good friends with white boys on the team and their white girlfriends.

This apparently innocent act set-off a problem. On Monday morning the president of the college, Dr. W.G. Brandenburg, called a meeting of all Negro students and stated, “The inter-racial dancing which had occurred

would not be tolerated and anyone who did it again would be expelled. And from that time forward school parties would be segregated with Negroes having their own party in the Cafeteria Annex and whites in the Gymnasium. Both dances would be held at the same time with the same band and food.”

That was that. There was nothing anybody could do about it. This was years before civil rights protests. We accepted it and soon forgot about it.

I took Accounting from James Massey. He had been at the college many years and was revered as

a great teacher. So, this great teacher says, “Open your books and here’s the pages we will cover today.” And then straight away he closed his book, propped-up his feet on his desk and got out his newspaper and began to read. He never did do any teaching and seemed to not like it if you went to him for help. This legend of a teacher was a great disappointment and I have never forgotten him.

Another teacher, Miss Miller, did not teach at all. She gave out the assignment in the typing book and went straight to grading papers. That’s about all she did was grade

papers. She seemed to be swamped with them. I really did not start out to be a teacher. I wanted to be a lawyer. KSTC did not have a law school. The nearest one was Kansas University in Lawrence, and I did not have the tuition to go there. Nevertheless, I have been satisfied with my teaching career.

If you have a remembrance and/or photo to share, send it — along with your name, address and phone number — by email to jtknoll@subell.net or by land mail to 401 W. Euclid, Pittsburg, Kansas 66762. You can phone and text photos to 620-704-1309.

EDITORIAL CARTOON



LETTER TO THE EDITOR

Community invitation to special session in Parsons

On behalf of the Kansas Supreme Court, I am pleased to invite the people in communities near Parsons to join the court for a special session Monday evening, Oct. 3.

The court will hear two cases starting at 6:30 p.m. in the auditorium at Parsons High School. Right after this special session of about 90 minutes, the court’s seven justices will greet everyone in an informal reception.

During the special session, you will hear arguments made by Kan-

sas attorneys in support of their clients. You will also hear justices ask the attorneys questions to learn why they believe the law supports their clients’ positions.

Our questions and the attorneys’ arguments help clarify the legal questions before us. We use this information to meet our duty to be fair and impartial when we apply the U.S. Constitution, the Kansas Constitution, and the laws passed by our state Legislature. We do this

without regard to politics, special interests, public opinion, or even our own beliefs.

Come see who we are, what we do, and how we do it. You will come away from the experience with a better understanding of our court and the appellate process.

My colleagues and I look forward to our visit to southeast Kansas and meeting you Oct. 3.

— Chief Justice Marla Luckert
Kansas Supreme Court

Colleague's abuse of sick leave has come to a head



DEAR ABBY

Abigail Van Buren

DEAR ABBY: My co-worker takes advantage of our employer’s generous sick leave policy and calls in sick frequently. She will return the next day with no outward sign of illness and has, on several occasions, returned with a fresh haircut and manicure. When she’s at work, she frequently steps away from her desk for personal calls. I finally said something to our supervisor because I feel taken advantage of. Having worked in this office for more than 10 years, I know

the work inside and out, so I can do my work -- and hers -- with ease. I actually like my co-worker, but I feel she’s taking me for granted. Our supervisor had a talk with her, but it didn’t help. Would it be unreasonable for me to have a frank discussion with her directly? I foresee that it may cause a cool reception, but I’m losing patience. — CO-WORKER CONUNDRUM

DEAR CO-WORKER: It’s not unreasonable to speak with this co-worker, but what have you to gain by confronting her and what do you have to lose? If it will cause a frostier work environment, don’t do it. A better solution would be to STOP DOING HER WORK FOR HER. Having to face the consequences

of slacking may give her an incentive to change her ways.

DEAR ABBY: My husband of many years is lovely and sweet every morning, but after drinking, which he does every day starting at 4 or 5 o’clock, his personality changes. I have to be extremely careful of every word I say or I will be the recipient of his sarcasm and/or anger, so I’m anxious and worried every evening until he goes to sleep, which, fortunately, is very early. In the morning he expects me to be happy and cheerful as if nothing went on the night before. I have tried to discuss this with him, but it doesn’t help. After years of this, I have become depressed and would really appreciate your advice. — AT WITS’

END IN FLORIDA

DEAR AT WITS’ END: You are married to an alcoholic. Marriage to a verbally abusive alcoholic would make anybody depressed! I can only wonder why you have chosen to tolerate this for so long. The path toward a solution to your problem would start with locating the nearest Al-Anon meeting and attending some of them. If you do, you will find the support and help you are looking for. You can find a nearby meeting by visiting al-anon.org/info.

DEAR ABBY: I have a handyman doing work on my home. I noticed that when he uses the bathroom, he is in there a while and going number two. My

anxiety levels are through the roof. Do I tell him anything, and what should I say? — NERVOUS LADY IN CALIFORNIA

DEAR LADY: May I share a truism? When we gotta go, we gotta go. If your handyman leaves the bathroom in the same condition when he exits as when he goes in there, you have nothing to be “anxious” about. Be gracious, and when you need a handyman there will always be someone willing to help you.

Dear Abby is written by Abigail Van Buren, also known as Jeanne Phillips, and was founded by her mother, Pauline Phillips. Contact Dear Abby at www.DearAbby.com or P.O. Box 69440, Los Angeles, CA 90069.

AGRICULTURE

Fall soil sampling

By Adaven Scronce
Wildcat Extension District

If you are considering planting a food plot, knowing the nutrient levels of the soil before planting will help determine if you need to apply fertilizer. Soil tests evaluate the available plant nutrients in a field, garden, lawn, pasture, or food plot. Knowing the nutrient levels of the soil can determine if any additional nutrients need to be added. If nutrients need to be added, a soil test will also help determine the amount of fertilizer needed, depending on what type of plants you are planning on growing. Having this information and knowing the correct amount of fertilizer to add will increase the likelihood of growing a successful food plot, and can save time and money. To collect a soil sample,

there are a few guidelines to follow.

- Start with the right equipment: You will need a soil sampling probe (these can be borrowed from your local K-State Extension office) to collect core samples, a plastic bucket to put the soil in and a few plastic bags will be needed to put the soil in to send the samples off.
- Map it out: Draw a map of the sample area and divide it into uniform areas. Each area should have the same soil texture, color, slope, fertilization and cropping history.
- Start sampling: For the standard pH, buffer pH, P and K test, sample 6 inches deep and take 10 to 15 cores from each area. Moving in a zig-zag across the area will help to get a more representative sample. Mix thoroughly in the clean bucket. Fill your soil collection bags from this mixture making

sure that there are about 2 cups of soil. For available nitrogen, chloride or sulfur tests, take the same number of cores, but a subsoil sample to a depth 24 inches is necessary. It is also important to note that if a zinc test is requested; use a plastic bucket for soil collection as bucket made out of galvanized or rubber materials may contaminate the results.

- Places to avoid: Avoid taking samples from old fencerows, dead furrows, low spots, feeding areas or other areas that might give unusual results. If information is desired from these areas, take a separate sample from that area.
- Label: Clearly label the bag the soil sample is in. Record the sample identification on the bag and the information sheet that will be sent to the lab. Keep records of where the

soil samples were taken and the name that was given for each sample.

- Send samples: Once all the soil is collected from the desired areas, take the samples to your local K-State Research and Extension office. They will send the samples to the K-State Soil Testing Laboratory to be analyzed. Generally, expect results and fertilizer recommendations back within two weeks.

If taking soil samples on a regular basis, be sure to collect samples during the same time of year. Since nutrient levels vary in different times of the year, this will allow you to compare results from year to year.

For more information, please contact Adaven Scronce, diversified agriculture and natural resource agent, Wildcat District, at 620-331-2690 or adaven@ksu.edu.

Broomsedge field trial updates

By Wendie Powell
Wildcat Extension District

“Replenishing the nutrients removed every year will help maintain the soil fertility levels, otherwise year after year the nutrients will be exported from the hayfield, and forage production will decline,” says Dr. Bruno Pedreira, the regional agronomist for southeast Kansas. The Broomsedge Project will evaluate the impact of fertilization strategies on broomsedge in fescue and native grass hay fields in SE Kansas, over several years. Fertilizer treatments are applied based

on each location’s soil analysis.

We are holding two different updates in October for the native grass sites (Caney and Coyville). The Coyville site will be reviewed on Oct. 8, at the Old Iron Club (10392 Jade Rd.) outside of Fredonia, Kansas. The Wilson County Conservation District will be providing lunch. Please call Pam Walker, district manager to RSVP, at 620-378-2866. The program will begin at 11 a.m. with a presentation on pasture fertility followed by lunch and the trial update.

On Oct. 22, the Broom-sedge Field Trial Update

for the Caney site will start off at the Caney Valley Recreation (403 E. First). Following the same schedule, the program will begin at 11 a.m. with a presentation on pasture fertility followed by lunch. The trial update will be held on-site, near the intersection of Hwy 75 and Hwy 160, look for the sign. The Montgomery County Conservation District will be providing lunch, please RSVP at the Montgomery County Extension Office at 620-331-2690.

This project is a collaboration of K-State Research and Extension, Wilson County Conservation Dis-

trict, Montgomery County Conservation District, and Labette County Conservation District. There will be field trial updates held for the Altamont fescue site and the Girard fescue site.

For more information, contact Wendie Powell, livestock production agent, 620-784-5337 or wendiepowell@ksu.edu. A special thanks goes to these project sponsors: Pro-Ag Services, LLC, Caney Agri-Service, Midwest Minerals and Community National Bank and Trust.

While there are no fees for these updates, please RSVP to aid in meal planning.

FDA proposes updated definition of ‘healthy’ claim on food packages

Staff Reports
news@morningsun.net

The U.S. Food and Drug Administration on Wednesday proposed updated criteria for when foods can be labeled with the nutrient content claim “healthy” on their packaging. This proposed rule would align the definition of the “healthy” claim with current nutrition science, the updated Nutrition Facts label and the current Dietary Guidelines for Americans, the FDA said.

More than 80 percent of people in the U.S. aren’t eating enough vegetables, fruit and dairy, according to the FDA, and most people consume too much added sugars, saturated fat and sodium. The proposed rule is part of the agency’s ongoing commitment to helping consumers improve nutrition and dietary patterns to help reduce the burden of chronic disease and advance health equity, the FDA said in a news release.

The proposed rule comes on the heels of the White House Conference on Hunger, Nutrition,

and Health, as well as the release of the related national strategy, which aims to end hunger, improve nutrition and physical activity, reduce diet-related diseases and close disparity gaps by 2030.

“Nutrition is key to improving our nation’s health,” said Secretary of Health and Human Services Xavier Becerra. “Healthy food can lower our risk for chronic disease. But too many people may not know what constitutes healthy food. FDA’s move will help educate more Americans to improve health outcomes, tackle health disparities and save lives.”

The proposed rule would update the “healthy” definition “to better account for how all the nutrients in various food groups contribute and may work synergistically to create healthy dietary patterns and improve health,” according to the FDA. Under the proposed definition for the updated “healthy” claim, which is based on current nutrition science, the FDA said, more foods that are part of a healthy

dietary pattern and recommended by the Dietary Guidelines would be eligible to use the claim on their labeling, including nuts and seeds, higher fat fish (such as salmon), certain oils and water.

“Diet-related chronic diseases, such as cardiovascular disease and Type 2 diabetes, are the leading causes of death and disability in the U.S. and disproportionately impact racial and ethnic minority groups,” said FDA Commissioner Robert M. Califf, M.D. “Today’s action is an important step toward accomplishing a number of nutrition-related priorities, which include empowering consumers with information to choose healthier diets and establishing healthy eating habits early. It can also result in a healthier food supply.”

Under the proposed definition, in order to be labeled with the “healthy” claim on food packaging, the products would need to contain a certain meaningful amount of food from at least one of the food groups or subgroups (e.g., fruit, vegetable, dairy, etc.) recommended by the Dietary Guidelines, and adhere to specific limits for certain nutrients, such as saturated fat, sodium and added sugars.

The threshold for the limits is based on a percent of the Daily Value (DV) for the nutrient and varies depending on the food and food group. The limit for sodium is 10 percent of the DV per serving (230 milligrams per serving). For example, a cereal would need to contain ¼ ounces of whole grains and contain no more than 1 gram of saturated fat, 230 milligrams of sodium

and 2.5 grams of added sugars.

“Healthy eating patterns are associated with improved health, yet most people’s eating patterns do not align with current dietary recommendations,” said Susan Mayne, Ph.D., director of the FDA Center for Food Safety and Applied Nutrition. “In addition to today’s action, we continue to advance a number of FDA initiatives and explore new ways to coordinate, leverage and amplify important work going on across the nutrition ecosystem to help improve people’s diets and make a profound impact on the health of current and future generations.”

Along with empowering consumers, adopting the updated definition may help foster a healthier food supply if some manufacturers reformulate (e.g., add more vegetables or whole grains to meet criteria) or develop products that meet the updated definition, according to the FDA.

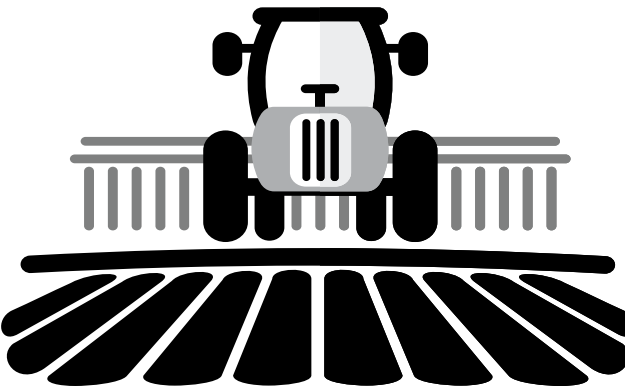
Because consumers have long been interested in finding ways to more easily identify healthy foods, the agency is also in the process of studying and exploring the development of a symbol that manufacturers could use to show that their product meets the “healthy” claim criteria. The agency said it realizes that consumers are busy and, while shopping, may be seeking a quick way to identify and select healthy products. The updated “healthy” claim, and potential symbol, together would act as quick signals to help consumers identify healthier food choices more easily, the FDA said.

COMMODITIES

Chicago Merchantile Exchange					
	Open	High	Low	Settle	Chg
CATTLE					
40,000 lbs.; cents per lb.					
Oct	144.15	144.20	142.92	143.05	−.52
Dec	147.32	147.47	146.07	146.27	−.63
Feb	151.20	151.40	150.10	150.17	−.68
Apr	155.00	155.00	153.80	153.87	−.65
Jun	150.92	150.97	150.02	150.10	−.62
Aug	150.75	150.80	150.00	150.10	−.50
Oct	154.77	154.77	154.10	154.15	−.40
Dec	158.45	158.72	157.75	157.85	−.02
Feb	161.70	161.97	161.00	161.20	+1.15
Est. sales 61,409. Tue.'s sales 59,864					
Tue.'s open int 285,381					
FEEDER CATTLE					
50,000 lbs.; cents per lb.					
Sep	175.70	175.97	174.92	175.37	−.33
Oct	176.50	176.60	174.60	175.00	−1.12
Nov	176.52	176.62	175.02	175.27	−1.00
Jan	177.02	177.15	175.75	175.95	−.85
Mar	179.37	179.52	178.17	178.27	−.85
Apr	182.67	182.67	181.90	182.00	−.52
May	185.35	186.05	184.82	185.15	−.60
Aug	195.50	195.97	194.80	195.00	−.50
Est. sales 36,004. Tue.'s sales 15,651					
Tue.'s open int 46,403, up 624					
HOGS, LEAN					
40,000 lbs.; cents per lb.					
Oct	89.05	89.77	88.27	89.37	+67
Dec	76.75	77.25	75.32	75.82	−.43
Feb	80.75	81.15	79.05	79.47	−.88
Apr	86.92	87.02	84.80	85.22	−1.38
May	90.52	90.65	89.80	89.87	−1.38
Jun	97.90	97.90	95.80	96.00	−1.70
Jul	98.30	98.30	96.12	96.40	−1.65
Aug	97.30	97.30	95.17	95.75	−1.40
Oct	84.77	84.77	82.42	83.55	−.90
Est. sales 75,154. Tue.'s sales 70,548					
Tue.'s open int 205,376, up 2,180					
PORK BELLIES					
40,000 lbs.; cents per lb.					
No open contracts..					

Chicago Board of Trade					
	Open	High	Low	Settle	Chg.
WHEAT					
5,000 bu minimum; cents per bushel					
Dec	874¼	905	862	903¼	+31¼
Mar	884¾	917¼	875	915	+30¾
May	894¾	922¼	880¾	920½	+30
Jul	877	904¾	865½	903¾	+27¾
Sep	870	900	861¼	898¼	+25½
Dec	873½	900	862½	899	+24¾
Mar	862	893½	862	892¾	+24
May	880½	+23			
Est. sales 74,800. Tue.'s sales 71,883					
Tue.'s open int 290,771, up 2,816					
CORN					
5,000 bu minimum; cents per bushel					
Dec	668¼	673¼	661½	670½	+3
Mar	673¼	678½	667¼	676½	+3¾
May	674¼	679½	668¼	677¼	+3¾
Jul	668¾	673½	662½	671¼	+4
Sep	624	626¾	617¾	624½	+3¼
Dec	611	615½	606¾	613¾	+3½
Mar	614½	621¼	613¾	620¼	+3¼
May	618½	624	618	622¼	+3
Jul	616¼	621	616¼	619	+3¼
Est. sales 247,690. Tue.'s sales 225,840					
Tue.'s open int 1,347,278, up 2,603					
OATS					
5,000 bu minimum; cents per bushel					
Dec	374¾	383½	370¼	378	+8
Mar	375¼	381¾	375	381¼	+7½
May	382½	+7			
Jul	385¼	+7			
Sep	371¼	+7			
Dec	371¼	+7			
Mar	363½	+7			
May	360¾	+7			
Jul	348¾	+7			
Est. sales 421. Tue.'s sales 395					
Tue.'s open int 3,844, up 44					
SOYBEANS					
5,000 bu minimum; cents per bushel					
Nov	1409	1412½	1390¾	1408¾	+¾
Jan	1415	1418½	1397¾	1416¼	+2¼
Mar	1418¼	1423	1402¼	1420¾	+3¾
May	1420¾	1427	1406½	1425	+4½
Jul	1419½	1426¾	1405¾	1425	+5
Aug	1399½	1408¼	1389¾	1406½	+5
Sep	1366½	1371¾	1360¼	1371¾	+7
Nov	1349	1359½	1340¾	1358½	+8½
Jan	1356¼	1360½	1356¼	1360½	+8¼
Est. sales 228,487. Tue.'s sales 221,196					
Tue.'s open int 699,311, up 11,255					
SOYBEAN OIL					
60,000 lbs; cents per lb					
Oct	66.23	66.24	64.16	65.52	−.14
Dec	62.60	62.88	60.75	62.15	−.24
Jan	61.89	62.05	60.11	61.52	−.14
Mar	60.97	61.11	59.37	60.77	−.04
May	60.04	60.36	58.64	60.07	+0.2
Jul	59.25	59.50	57.83	59.20	+0.4
Aug	57.60	58.66	57.18	58.39	+0.6
Sep	57.57	58.01	56.59	57.69	+0.9
Oct	56.26	57.00	55.77	57.00	+1.2
Est. sales 151,032. Tue.'s sales 141,292					
Tue.'s open int 405,478					
SOYBEAN MEAL					
100 tons; dollars per ton					
Oct	427.00	428.30	419.50	421.80	−4.30
Dec	414.20	416.60	410.50	412.70	−9.90
Jan	410.80	413.10	407.50	409.70	
Mar	405.00	407.90	402.10	404.40	+1.10
May	402.20	405.40	399.60	402.10	+4.0
Jul	402.00	405.30	399.60	402.10	+7.0
Aug	397.40	400.80	395.90	398.00	+1.10
Sep	392.10	395.50	390.80	392.80	+1.40
Oct	385.00	386.90	385.00	386.90	+1.90
Est. sales 135,075. Tue.'s sales 127,870					
Tue.'s open int 380,991					

Producers Cooperative Association					
Bushel					
Soft wheat.....					\$8.48
Soybean.....					\$14.84
Yellow shell corn					\$7.50
Milo					\$6.30
Columbus Grain					
Bushel					
Hard wheat.....					\$9.01
Soft wheat.....					\$8.48
Soybean.....					\$14.84
Yellow shell corn					\$7.51
Milo					\$6.31
McCune Farmers Union Coop Association					
Bushel					
Hard wheat.....					\$9.01
Soft wheat.....					\$8.48
Soybean.....					\$14.84
Yellow shell corn					\$7.51
Milo					\$6.31





Subscribe to the area's Local newspaper

Call Today!

620-231-2600

LOOKING BACK

FROM OUR HISTORY

The annual Christmas in September handicraft exhibit drew over 1,000 persons

By Phil Burgert
news@morningsun.net

Excerpted stories in Crawford County newspaper archives

100 Years Ago
Sept. 29, 1922

Commemorating the anniversary of the constitution, the Kiwanis club held a banquet last night in Bussey's Annex, in the form of ladies' night, with wives of the members as special guests. The attendance was exceptionally good. Judge A. J. Curran made the principal address, using as his subject, "The Constitution of the United States," including a discussion of its adoption, significance and importance, and its future.

Republican leaders do not anticipate retaining the enormous majorities of the 1920 landslide, and possibly may lose a few of the Republican majority in the national House of Representatives, U.S. Sen. Arthur Capper said upon his return to Topeka from Washington. But unquestionably the Republicans will continue in control "strongly, " he added. Sen. Capper and all eight Kansas congressman are returning to jump into the Kansas campaign.

There will be no independent candidate for congress in Kansas this year. The time for filing expired with the closing of the secretary of state's office last night. Richard C. Meeks, of Parsons, who had announced as an

independent candidate in the third district, went to Topeka but did not file. W. H. Sproul of Sedan is the Republican and Charles Stephens, of Columbus, the Democratic nominee.

50 Years Ago
Sept. 29, 1972

The annual Christmas in September handicraft exhibit of extension homemakers in Crawford County drew well over 1,000 persons yesterday. Homemaker craftswomen set up a variety of displays ranging from needlecraft to baking – all designed around a Christmas theme offered as either gifts or decorations.

Mrs. Betty Lusk withdrew as Democratic candidate for Crawford County Register of Deeds because of a possibility

that she might move out of the county, according to the withdrawal letter submitted to D. J. (Joe) Saia, county Democratic Party chairman. Mrs. Lusk's withdrawal leaves the incumbent, Mrs. Gertrude Abernathy, a Republican, as the only candidate for the post.

Two of the defendants arrested in drug raids east of Frontenac Sept. 19 were sentenced to one to five years at the Kansas State Industrial Reformatory at Hutchinson yesterday. Crawford County District Court Judge Don Musser revoked the parole on drug and burglary violations of Robert Foster and Steve Graham and ordered them remanded to the state reception and diagnostic center in Topeka.

25 Years Ago
Sept. 29, 1997

About 50 USD 250 elementary school students are scheduled to attend classes today in modular classes that had not passed city building and fire inspection last week. Inspectors noted several concerns after an initial "walk through." Most of the problems were considered minor and were expected to be corrected by today, according to one of the buildings inspectors who examined the classrooms.

Pittsburg Head Start has an inviting new home at 20th and Grand. In fact, the place is so nice that one mother could hardly pry her son away yesterday during an open house at the new facility. "I'm

trying everything I can to stay here!" said the boy as he and other youngsters played with a wooden train and tracks. The building had been an old grocery store for years before SEK-CAP got it and used it as a congregate meal site and for family planning.

No Matt Pinamonti, no Dion Meneley, no Mark Degiusti. Not that big a problem for the Pittsburg State Gorillas as the No. 2-ranked team in NCAA Division II football downed the Missouri Southern Lions 42-14 in Joplin, Mo. The Gorillas played without the three starting linebackers but did just fine in holding the Lions to two touchdowns, getting three turnovers and sacking MSSC quarterback Brad Cornelsen three times.

TODAY IN HISTORY

In 2005, John Roberts was sworn in as the nation's 17th chief justice

Associated Press
news@morningsun.net

Today is Thursday, Sept. 29, the 272nd day of 2022. There are 93 days left in the year.

Today's Highlight in History:

On Sept. 29, 1938, British, French, German and Italian leaders concluded the Munich Agreement, which was aimed at appeasing Adolf Hitler by allowing Nazi annexation of Czechoslovakia's Sudetenland.

On this date:

In 1789, the U.S. War Department established a regular army with a strength of several hundred men.

In 1829, London's reorganized police force, which became known as Scotland Yard, went on duty.

In 1943, General Dwight D. Eisenhower and Italian Marshal Pietro Badoglio signed an armistice aboard the British ship HMS Nelson off Malta.

In 1962, Canada joined the space age as it launched the Alouette 1 satellite from Vandenberg Air Force Base in

California. The musical "My Fair Lady" closed on Broadway after 2,717 performances.

In 1965, President Lyndon Johnson signed the National Foundation on the Arts and the Humanities Act of 1965, creating the National Endowment for the Humanities and the National Endowment for the Arts.

In 1978, Pope John Paul I was found dead in his Vatican apartment just over a month after becoming head of the Roman Catholic Church.

In 1982, Extra-Strength Tylenol capsules laced with deadly cyanide claimed the first of seven victims in the Chicago area. (To date, the case remains unsolved.)

In 1986, the Soviet Union released Nicholas Daniloff, an American journalist confined on spying charges.

In 1989, actor Zsa Zsa Gabor was convicted of battery for slapping Beverly Hills police officer Paul Kramer after he'd pulled over her Rolls-Royce for expired license plates. (As part of her

sentence, Gabor ended up serving three days in jail.)

In 2000, Israeli riot police stormed a major Jerusalem shrine and opened fire on stone-throwing Muslim worshippers, killing four Palestinians and wounding 175.

In 2005, John G. Roberts Jr. was sworn in as the nation's 17th chief justice after winning Senate confirmation.

In 2020, the first debate between President Donald Trump and Democrat Joe Biden deteriorated into bitter taunts and near chaos, as Trump repeatedly interrupted his opponent with angry and personal jabs and the two men talked over each other. Trump refused to condemn white supremacists who had supported him, telling one such group known as Proud Boys to "stand back, stand by."

Ten years ago: Omar Khadr, the last Western detainee held at the U.S. military prison in Guantanamo Bay, Cuba, returned to Canada after a decade in custody. Former New York Times publisher Arthur Ochs Sulzberger died

at the age of 86.

Five years ago: Tom Price resigned as President Donald Trump's secretary of Health and Human Services amid investigations into his use of costly charter flights for official travel at taxpayer expense. The United States warned Americans to stay away from Cuba, and ordered home more than half of the American diplomatic corps there; the administration began referring to the mysterious health ailments affecting Americans there as "attacks" rather than "incidents" but acknowledged that neither Cuban nor US investigators could figure out who or what was responsible. San Juan Mayor Carmen Yulín Cruz accused the Trump administration of "killing us with the inefficiency" after Hurricane Maria.

One year ago: In a major victory for pop star Britney Spears, a judge in Los Angeles suspended the singer's father from the conservatorship that had controlled her life and money for 13 years,

saying the arrangement reflected a "toxic environment." (The judge would end the conservatorship weeks later.) Five-time Olympic swimming medalist Klete Keller pleaded guilty to a felony charge for storming the U.S. Capitol during the Jan. 6 riot. Former Japanese Foreign Minister Fumio Kishida won Japan's governing party's leadership election, putting him in line to become the country's next prime minister.

Today's Birthdays: Conductor Richard Bonyng is 92. Writer-director Robert Benton is 90. Singer Jerry Lee Lewis is 87. Soul-blues-gospel singer Sherman Holmes is 83. NASA administrator and former Sen. Bill Nelson, D-Fla., is 80. Actor Ian McShane is 80. Jazz musician Jean-Luc Ponty is 80. Nobel Peace laureate Lech Walesa (lehk vah-WEN'-sah) is 79. Television-film composer Mike Post is 78. Actor Patricia Hodge is 76. TV personality Bryant Gumbel is 74. Rock singer-musician Mark Farner is 74. Rock singer-musician Mike

Pinera is 74. Country singer Alvin Crow is 72. Actor Drake Hogestyn is 69. Olympic gold medal runner Sebastian Coe is 66. Singer Suzzy Roche (The Roches) is 66. Comedian-actor Andrew "Dice" Clay is 65. Rock singer John Payne (Asia) is 64. Actor Roger Bart is 60. Singer-musician Les Claypool is 59. Actor Jill Whelan is 56. Actor Ben Miles is 56. Actor Luke Goss is 54. Actor Erika Eleniak is 53. R&B singer Devante Swing (Jodeci) is 53. Country singer Brad Cotter (TV: "Nashville Star") is 52. Actor Emily Lloyd is 52. Actor Natasha Gregson Wagner is 52. Actor Rachel Cronin is 51. Country musician Danick Dupelle (Emerson Drive) is 49. Actor Alexis Cruz is 48. Actor Zachary Levi is 42. Actor Chrissy Metz (TV: "This Is Us") is 42. Actor Kelly McCreary (TV: "Grey's Anatomy") is 41. Rock musician Josh Farro is 35. NBA All-Star Kevin Durant is 34. Actor Doug Brochu is 32. Singer Phillip Phillips is 32. Pop singer Halsey is 28. Actor Clara Mamet is 28.

OVERPASS

Continued from Page 1A

Commissioner Tom Moody, whose Second District includes the northern half of the bridge; the southern half lies in Commissioner Jeremy Johnson's Third District.

At the Pittsburg City Commission, Bacon was called up by Mayor Cheryl Brooks to clarify who owns the bridge. Bacon said it is the City of Frontenac who is responsible for it now. Bacon also said the county was going to do some repair work and approached Pittsburg for assistance, but COVID-19 got in the way of that.

According to Pittsburg City Commissioner Chuck Munsell, the overpass is a vital transportation hub for Pittsburg and Frontenac. Much of the traffic across the overpass is headed to or from the northern industrial park in Pittsburg.

"Pittsburg, Frontenac, and Crawford County need to come together to fix the bridge," said Edwards. "It could be my family on that bridge if it collapses. It could be your family."

"Frontenac needs to drive this train," said Pittsburg City Commissioner Dawn McNay. "If I've learned nothing from sitting here for five years, don't encroach on Frontenac streets without their permission."

Munsell said he has spoken to Frontenac city leaders and reported they are in favor of sitting down to discuss the problem. He is willing to continue talking with Frontenac and the county to resolve the issue.

"This is going to come down to dollars," said Pittsburg Commissioner Ron Seglie. "Who is going to pay for it?" Seglie then asked Bacon to ballpark a price. Bacon said it depends on the scope of the work and would not provide a price.

"We'll come to the table if Frontenac invites us," said McNay. "It's their road."

Pittsburg City Manager Daron Hall said this is bigger than just one road. Any discussion about the overpass has to include the other roads shared by both cities and the county.

Edwards said his next stop is the Frontenac City Council meeting on Monday, Oct. 3.

Almanac for PITTSBURG, KS September 28, 2022				
Daily Data	Observed	Normal	Record Highest	Record Lowest
Max Temperature	87	78	101 in 1953	63 in 1951
Min Temperature	50	56	70 in 2019	44 in 2018
Avg Temperature	68.5	66.7	80.5 in 1953	54.5 in 1951
Precipitation	0.00	0.16	1.74 in 1955	0.00 in 2022
Snowfall	M	0.0	0.0 in 2021	0.0 in 2021
Snow Depth	M	-	0 in 2021	0 in 2021
HDD (base 65)	0	2	10 in 1951	0 in 2022
CDD (base 65)	4	4	16 in 1953	0 in 2020
Month-to-Date Summary	Observed	Normal	Record Highest	Record Lowest
Avg Max Temperature	87.4	82.6	92.6 in 1954	77.8 in 2009
Avg Min Temperature	61.4	60.0	68.1 in 2005	54.8 in 1952
Avg Temperature	74.4	71.3	78.2 in 2005	67.6 in 1951
Total Precipitation	0.49	4.88	19.38 in 1993	0.12 in 1979
Total Snowfall	M	0.0	0.0 in 2021	0.0 in 2021
Max Snow Depth	M	-	0 in 2021	0 in 2021
Total HDD (base 65)	6	23	51 in 2011	0 in 2019
Total CDD (base 65)	276	200	376 in 2005	114 in 1951
Year-to-Date Summary	Observed	Normal	Record Highest	Record Lowest
Avg Max Temperature	72.8	71.4	81.0 in 1950	39.0 in 1963
Avg Min Temperature	50.0	50.5	58.3 in 1950	16.3 in 1963
Avg Temperature	61.4	61.0	69.6 in 1950	27.6 in 1963
Total Precipitation	25.84	38.39	56.50 in 2019	3.05 in 1948
Total Snowfall (since July 1)	0.0	0.0	0.0 in 2022	0.0 in 2022
Max Snow Depth (since July 1)	0	-	0 in 2022	0 in 2022
Total HDD (since July 1)	6	24	51 in 2011	0 in 2019
Total CDD (since Jan 1)	1917	1567	2140 in 1954	0 in 1970

To place an ad Call 620-231-2600

Classifieds

Maximum Exposure, Maximum Value, Maximum Results.

www.morningsun.net

21 ISSUES
30 WORDS
Only \$20!
Less than \$1
per day

HOW TO PLACE AN AD: CALL: 620-231-2600

email: classified@morningsun.net

Mail: The Morning Sun, Attn: Classified Dept.
701 N. Locust, P.O. Drawer H, Pittsburg, KS 66762

Classifieds Get Results!

PAWPRINTS ON THE HEARTLAND

Low-cost spay/neuter services. For appointment, call 620-232-0907 M-W-F between 10 a.m. and 2 p.m. Pets must be at least three months old For Sale

United Tree Service

Tree and lawn spraying, tree trimming, Bush and edge trimming, lawn and tree fertilizing, and gutter cleaning. Licensed, insured, and bonded. Call Kent: 417-499-9929

R.L.N.B Mowing

Need help with your yard work? I can help! Mowing, yard care, weed eating, cleaning up, etc. Call 620-687-7551 now for pricing and full list of services.

Professional Carpet Steam Cleaning

Best rates in town! 3 rooms for \$99! Got old hardwood floors? We can refinish them! Free estimates! Call 620-704-0045.

Riding Mower for Sale

John Deere riding lawn mower (LT-160). Doesn't run. Hood, tires, and seat in EXCELLENT condition. Call 620-231-9344 anytime, if interested.

For Sale

Place your 25-word classified in the Kansas Press Association and 135 more newspapers for only \$300/ week. Find

employees, sell your home or your car. Call the Kansas Press Association @ 785-271-5304 today!

Wanted to Buy

Want to buy 1957 Chevrolet 2 or 4 door with original paint. Call Bob - 301-367-8129

Livestock

Use Xylecide® anti-fungal shampoo on dogs & horses. Eliminates shedding & doggy odor. At Orscheln Farm & Home (www.fleabeacon.com)

Garage Sale

608 East 22nd Saturday (Oct. 1st) 7:00am - 3:00pm Guitars - musical items, Jeff Gordon, Jamie McMurray, Dale Earnhardt Collectibles (and others). Remote '57 Chevy 1/8 scale, wedding limousine 1:18 scale, collectible cycles, dragsters, funny cars, stockcars, old cars. Cycle and stockcar knives, old drag racing magazines and tapes. Old comic books, old bottles, Kansas City collectibles, 12 in. Michael Vick figure, football cards.

ESTATE SALE!!

2705 Knollview St., Pittsburg Saturday, October 1 Starting at 8 a.m. Lots of small kitchen appliances, silverware, 8-piece China set, collectibles, bedroom furniture, slate bumper pool table, Christmas décor, commercial pizza oven,

commercial hot plate, wood working tools, hand tools, antique hand tools, electric pole saw, Husqvarna 42" riding lawn mower. Priced to Sell!

Misc.

BEAUTIFY YOUR HOME with energy efficient new windows! They will increase your home's value & decrease your energy bills. Replace all or a few! Call now to get your free, no-obligation quote. 877-859-1337

Misc.

LONG DISTANCE MOVING: Call today for a FREE QUOTE from America's Most Trusted Interstate Movers. Let us take the stress out of moving! Speak to a Relocation Specialist, call 888-788-0471

Misc.

Never Pay For Covered Home Repairs Again! Complete Care Home Warranty COVERS ALL MAJOR SYSTEMS AND APPLIANCES. 30 DAY RISK FREE. \$200.00 OFF + 2 FREE Months! 844-237-1432

Misc.

UPDATE YOUR HOME with Beautiful New Blinds & Shades. FREE in-home estimates make it convenient to shop from home. Professional installation. Top quality - Made in the USA. Call

for free consultation: 844-740-0117. Ask about our specials!

Misc.

DONATE YOUR CAR TO CHARITY. Receive maximum value of write off for your taxes. Running or not! All conditions accepted. Free pickup. Call for details. 844-268-9386

Misc.

BATHROOM RENOVATIONS. EASY, ONE DAY updates! We specialize in safe bathing. Grab bars, no slip flooring & seated showers. Call for a free in-home consultation: 855-382-1221

Misc.

NEW AUTHORS WANTED! Page Publishing will help you self-publish your own book. FREE author submission kit! Limited offer! Why wait? Call now: 855-939-2090

Misc.

DirectTV Satellite TV Service Starting at \$74.99/month! Free Installation! 160+ channels available. Call Now to Get the Most Sports & Entertainment on TV! 888-721-1550

Misc.

TOP CASH PAID FOR OLD GUITARS! 1920-1980 Gibson, Martin, Fender, Gretsch, Epiphone, Guild, Mosrite, Rickenbacker, Prairie State, D'Angelico, Stromberg. And

Gibson Mandolins / Banjos. 855-454-6658

Misc.

Never clean your gutters again! Affordable, professionally installed gutter guards protect your gutters and home from debris and leaves forever! For a FREE Quote call: 844-607-1363

Misc.

DISCOUNT AIR TRAVEL. Call Flight Services for best pricing on domestic & international flights inside and from the US. Serving United, Delta, American & Southwest and many more

airlines. Call for free quote now! Have travel dates ready! 833-381-1348

Misc.

PAYING TOP CASH FOR MEN'S SPORT WATCHES! Rolex, Breitling, Omega, Patek Philippe, Heuer, Daytona, GMT, Submariner and Speedmaster. Call 844-575-0691

Misc.

SAVE YOUR HOME! Are you behind paying your MORTGAGE? Denied a Loan Modification? Threatened with FORECLOSURE? Call the Homeowner's Relief Line now for Help! 888-975-1473

LEGALS

(First Published in The Pittsburg Morning Sun on September 29th 2022)

IN THE ELEVENTH JUDICIAL DISTRICT DISTRICT COURT, CRAWFORD COUNTY, KANSAS PROBATE DEPARTMENT

IN THE MATTER OF THE ESTATE OF RICKY DEAN SCHOELING, Deceased. Case No. CRP-2022-PR-000116

Title to Real Estate Involved Pursuant to K.S.A. Chapter 59

NOTICE OF HEARING

THE STATE OF KANSAS TO ALL PERSONS CONCERNED: You are hereby notified that on the 23rd day of September, 2022, a Petition was filed in this Court by Jodi A. Schoeling, a surviving spouse and heir of Ricky Dean Schoeling, deceased, requesting Letters of Administration be issued to her without the requirement of bond.

You are required to file your written defenses to the petition on or before October 24, 2022, at 9:00 a.m. in the Crawford County District Court, Probate Department, 602 N. Locust, Pittsburg, Kansas 66762, at which time and place the cause will be heard. Should you fail to file your written defenses, judgment and decree will be entered in due course upon the petition.

All creditors of the decedent are notified to exhibit their demands against the estate within the latter of four months from the date of first publication of this Notice, as provided by law, or if the identity of the creditor is known or reasonably ascertainable, 30 days after actual notice was given as provided by law, and if their demands are not thus exhibited, they shall be forever barred.

Jodi A. Schoeling, Petitioner

Matthew T. Schippers, #27207 mtschippers@twgfirm.com William B. Wachter, #11863 bwachter@twgfirm.com TRIPLETT WOOLF GARRETSON, LLC 2959 N. Rock Road, Suite 300 Wichita, KS 67226 Tel: 316.630.8100 Attorneys for Petitioner

(First Published in The Pittsburg Morning Sun on September 29th 2022)

NOTICE OF TIMES, PLACES AND DATES OF ADDITIONAL REGISTRATION AND CLOSING THEREOF

In compliance with the provisions of K.S.A. 25-2310, 25-2311 (a) (3), notice is hereby given that the books for registration of voters are now open until the close of regular business hours on October 18, 2022 at the following locations on days of regular business hours:

Arcadia City Hall, Arma City Hall, Cherokee City Hall, Frontenac City Hall, McCune City Hall, Mulberry City Hall, Pittsburg City Hall, Walnut City Hall, and the Crawford County Election Office.

At the close of regular business hours on October 18, 2022, the books for registration of voters will close and remain closed until November 9, 2022.

To register to vote you must:

1. Be a United States Citizen
2. Be a resident of the State of Kansas
3. Be at least 18 years old before the next election
4. Have your civil rights restored if convicted of a felony

You must re-register if you have changed your residence or your name.

Anyone wishing to register to vote may do so at any City Hall in Crawford County or may apply in person at the Crawford County Election Office or by mail at P.O. Box 249, Girard, KS 66743, or online. Application forms shall be provided by the County Election Officer upon request from individuals, candidates or organizations. Such applications shall be signed by the applicant under penalty of perjury.

IN TESTIMONY WHEREOF I have hereunto set my hand and caused to be affixed by my official seal this 28th day of September, 2022 at the courthouse in Girard, Kansas.

(SEAL)

LISA LUSKER
CRAWFORD COUNTY CLERK
AND ELECTION OFFICER

Published in the Morning Sun on this 28th day of September, 2022

ESTATE SALE!!

LOCATION: 2508 Random Acres Court Pittsburg

DATE: Sat. Oct 1

Furniture, Crystal, Dishes, Glassware, Vintage Books, Clocks, and Luggage. Lots of Christmas décor.



WE'RE HIRING!

Seasonal Work | Full-Time & Part-Time Hours
www.mpix.com/careers

Public Health Environmental Specialist Cedar County Health Department El Dorado Springs

The Cedar County Health Department in El Dorado Springs is looking for a Public Health Environmental Specialist to work fulltime at 40 hours a week. Applicant must have a Bachelor's degree from an accredited college or university with a minimum of 30 earned credit hours in one or a combination the following: Biology, Chemistry, Bacteriology, Animal Science, Food Science, Soil Science, Sanitary Science, Environmental Health, or in a closely related physical or natural sciences. This position will also require at least one year of professional or technical experience in environmental public health work or time spent in one or more of the areas of a special qualifying experience. Also acceptable is 24 earned graduate credit hours from an accredited college or university in the specified areas and may substitute for the year of required experience. (OR) Have a Bachelor's degree from an accredited college or university in Environmental Health from a program accredited by the National Accreditation Council for Environmental Health Curriculum. Pay will be based off experience ranging from \$21-\$25. Please contact the Cedar County Health Department if interested at 417-876-5477 to apply.

Say Happy Birthday

In a Morning Sun Classified Happy Ad
It will Brighten Their Day!

\$51.00

* for a 2 x 3 ad with picture
Call 620-231-2600

Managing Attorney Pittsburg

Do you want to make a difference in the lives of your fellow Kansans and work with dedicated individuals who make a positive impact daily? If so, then Kansas Legal Services (KLS) is for you. We seek a Kansas licensed attorney to manage our Pittsburg office.

The qualified candidate must have the following: a Kansas law license; experience supervising staff and volunteers; excellent written and oral communication skills; and a desire and commitment to assist in the delivery of high-quality legal assistance to low-income people. The main duties and responsibilities of this position include but are not limited to:

- manage the day to day functions of the Pittsburg office including supervision of attorneys, paralegals and support staff in order to meet the budget
- maintain sound fiscal management and complete the requirements of current funding sources
- maintain a personal caseload
- delegate the work of the Pittsburg office
- supervise the casework and perform regular reviews of all case handling staff
- continue to develop the skills of attorneys and paralegals
- provide legal education the to the community through community events

Excellent paid employee benefits include: health, dental, life, disability, malpractice insurance, bar dues, CLE and paid parking. KLS is a qualifying employer for Public Service Loan Forgiveness; and eligible to apply for loan repayment assistance through Legal Service Corporation's Loan Repayment Assistance Program.

KLS offers a professional and friendly work environment. We are an equal opportunity employer with recruitment efforts focused on ensuring a diverse workforce. Spanish, bilingual is preferred but is not a requirement for this job.

Email a resume, writing sample and three professional references to Heather File, Human Resource Coordinator at fileh@klsinc.org. For more information see website: www.kansaslegalservices.org. EEO & Affirmative Action Employer



Kansas Legal Services

We are legal aid in Kansas, providing equal access to justice for the most vulnerable Kansans.
kansaslegalservices.org

NEWS

1 person shot dead at Arkansas hospital, 1 in custody

By ANDREW DeMILLO
Associated Press

LITTLE ROCK, Ark. (AP) — One person was fatally shot Wednesday morning at a Little Rock-area hospital, and authorities have a person in custody in the shooting, police said.

Sherwood Police Chief Jeff Hagar said police found one person dead at CHI St. Vincent North in Sherwood, which was on lockdown as authorities responded to reports of shooting at the hospital. Hagar did not release

the name of the victim or the name of a person of interest he said was later taken into custody.

The person of interest was arrested by Little Rock police at a gas station, the department tweeted.

Police did not say whether the person killed was a patient, employee or visitor. A hospital spokesman said the hospital's lockdown had been lifted Wednesday afternoon.

Sherwood is a city of about 33,000 people located northeast of Little Rock.



Retired school teacher Patsy Kern has been decorating for the different seasons and holidays for the past 50 years.
ANTJEA WOLFF / THE MORNING SUN

Fall in love with fall!



SEARCHING FOR A REWARDING CAREER?



"At SEK-CAP, Inc. you can expect to be appreciated and recognized for the unique value you bring to those we serve and your fellow colleagues."

WE ARE HIRING

- We invest in our staff by offering:
- Competitive Pay
 - Comprehensive Health, Vision and Dental coverage
 - 401(k) program with company match
 - Paid time off
 - Education Support

Payroll Clerk

Professional Development Coordinator

Contact us today! (620) 724-8204
Check out all our career opportunities:
www.sek-cap.com/employment

By Antjea Wolff
Morning Sun Staff

CAPALDO, Kan. — For a lot of people, fall is their favorite season. It's a time when the weather begins to cool, the leaves change, and families begin to prepare for holidays. Fall is also a fun time to adorn houses with pumpkins, scarecrows, and other accessories.

GROVES

Continued from Page 1A

I found it and am grateful to work with the men and women in blue every day."

Also on Wednesday, Schmidt's office announced nearly \$74,000 in grants for two Pittsburg organizations, Safehouse

I buy Old Coins
In God We Trust LLC
(620)-423-6600

Retired teacher Patsy Kern of Capaldo has been decorating for the different seasons for the past 50 years, and she said fall is her favorite.

"I just love the colors of the trees when they change, and everything that goes with it," she said.

Kern said this year as she was putting up scarecrows one of the neigh-

borhood children decided to name the boy scarecrow "Fred." She said she loves how the children react to her decorations.

"I enjoy doing it," Kern said. "And I love for others to enjoy my decorations as well."

Kern's display has inspired the Morning Sun to encourage readers to send photos of their fall decorations. Staff will vote for

the best fall decorations and the winner will get their photo submission in the newspaper and on our social media. Send photos by Wednesday, Oct. 12 to: The Morning Sun, P.O. Drawer H, Pittsburg, KS 66762, or submit through email at social@morningsun.net. Visit our Facebook at facebook.com/MorningSunPitt for other updates.

Crisis Center and Pittsburg Children's Advocacy Center.

Safehouse Crisis Center will receive \$22,558 to provide supervised visitation and child exchange services, as well as \$47,309 to support ongoing operating expenses. Pittsburg Children's Advocacy Center will receive \$4,000 for operating expenditures.

"Organizations across Kansas do great work every

day to support victims of crime," Schmidt said. "We are proud to support these organizations through the victim services grant programs."

The awards were made from the Protection from Abuse Fund, the State Child Exchange and Visitation Centers Fund, and the Children's Advocacy Centers Fund. The Protection from Abuse Fund is funded by State General

Fund appropriations, marriage license fees, county court costs and municipal court assessments. The State Child Exchange and Visitation Centers Fund is funded through marriage license fees and State General Fund appropriations. The Children's Advocacy Centers Fund is funded through the remittance of applicable fines, penalties and forfeitures from clerks of the district courts.

Pittsburg City Wide

YARD SALE

October 7th, 8th, And 9th

Sponsored By
The Morning Sun

Publishing Your Ad:
\$20 for 3 days — 30 words or less
\$5 more to have it posted to The Morning Sun's Facebook page
\$7 more to have it posted to The Morning Sun's website
Deadline for all ads and payments will be Monday, October 3rd, no later than 2 p.m.

Submissions may be sent to:
classified@morningsun.net

Or mailed to:
The Morning Sun
ATTN: Alyssa
P.O. Drawer H
Pittsburg, KS 66762

Don't forget to call City Hall to purchase your permit



The Pittsburg Public Library hosted a special event Wednesday celebrating 10 years of its iCraft program, which over 30 patrons attended. ANTJEA WOLFF / THE MORNING SUN

ICRAFT

Continued from Page 1A

to adult and decided to hold the iCraft events once a month. Besides smash books, other iCraft projects have included rock painting, watercolor painting, paper succulent gardens, list journals, and many more.

"We do this because

usually people don't have all this stuff in their house," Library Director Bev Clarkson said. "But we have it here so they can come here and use it."

On Wednesday, library staff celebrated 10 years of iCraft by doing a "throwback" to their very first creation, smash books. The staff provided patrons with a table filled with various supplies such as beads, ribbons, cut outs, stickers,

stamps, decals, and many other items to use in decorating their book.

Peterson said the library has had some of the supplies, such as its rubber stamps, since the very beginning, and they recycle a lot of supplies.

Participants in Wednesday's event Mona Kubler and Judy Mattson met at one of the first iCraft programs, became friends, and have been attending the iCraft events ever since.

"I like crafts, and so this is a good way to learn new ways of doing things," Kubler said.

"I love anything the library offers," Mattson said, "because it's casual, welcoming, friendly, and a good opportunity to meet new people and make friends."

CRAWFORD COUNTY MENTAL HEALTH CENTER

ADULT SERVICES 911 E Centennial 620-231-5130	AFTER HOURS EMERGENCY 620-232-7283	CHILDREN'S SERVICES 411 E Madison 620-232-3228
SUBSTANCE ABUSE OUTPATIENT SERVICES 3101 N Michigan 620-231-5130	SUBSTANCE ABUSE INPATIENT & REINTEGRATION 620-724-8806	THERAPEUTIC PRESCHOOL 620-235-7150

620-231-5130
www.crawfordmentalhealth.org
A Program of Crawford County Health Department

Kay Quick APRN

- Annual Well-Woman Exams
- Contraception, IUD, Nexplanon, Pills
- Menopausal Care
- General Medicine
- General Surgery

Most Insurances Accepted including Medicare

Hours:
Monday thru Thursday 9-5
Evening Appointments Available

MINIMALLY INVASIVE & BARIATRIC SURGERY, LLC
GASTROINTESTINAL & ENDOSCOPIC
TAKA KIDO, MD
2711 S Rouse St, Pittsburg, KS 66762
620-232-9000

Over 40 Years of Experience Caring for Our Community

SPORTS

POWERED BY CHATTERS HOUSE OF WINGS 2401 S Rouse | Pittsburgh Call ahead at 620-232-PASS



AROUND THE MIAA Jim Henry

Lions win on review

Missouri Southern football coach Atiba Bradley altered his eating plans slightly this week.

But he certainly didn't mind.

"I'll eat crow a little bit," he said Wednesday at his weekly press conference. "I was one of the biggest skeptics of the challenge and just how effective it would be. ... Being it's the first year and the camera angles, I was nervous.

"But, it won us a ball game. I'm very glad that the MIAA has been in the forefront for Division II and making sure that it's the best league and provides the best opportunity for its football."

Last Saturday night in Hays, the Lions took a 25-24 lead on Dawson Herl's three-yard touchdown pass to Trace Willhite with 1:59 remaining, capping a 13-play, 99-yard drive after a fumble recovery.

The Tigers began their drive at their 31-yard line and reached the MSSU 27 on three consecutive pass completions. The Lions stopped quarterback Jack Dawson for no gain on the next play, and Dawson lost his helmet while being tackled, meaning he had to leave the game.

Backup quarterback Ethan Forrester took the snap on second down and rushed up the middle for 21 yards to the 6-yard line, and the ball popped loose as he was tackled. The officials ruled that Forrester was down by contact, meaning the Tigers would retain possession. But Bradley challenged the call.

With the MIAA's new replay system this season, there are only two camera angles -- one from along the sideline (usually from the press box) and one from the end zone. An MIAA Network camera clearly showed the ball was fumbled before Forrester hit the ground, but those cameras can't be used by replay.

While officials were looking at the review, the MIAA Network angle was shown on the video board. When the Missouri Southern players and fans saw that replay, they got excited but still had to wait on the official's official decision.

Fortunately for the Lions, the replay cameras showed enough evidence to overturn the call, and two MSSU kneeldowns ran off the final 48 seconds.

The Lions have been the big surprise in the first third of the MIAA season. Picked to finish 10th in preseason polls, the Lions are 3-1 and part of a four-way tie for second place entering Saturday afternoon's Miners Bowl at first-place Pittsburg State (4-0).

Back when Bradley was hired in February 2021, MSSU fans believed he was the right man for the job. And the former Joplin High and MSSU player has proved them right.

The Lions are on a three-game winning streak for the first time since starting 3-0 in 2013. That season ended with a 35-21 victory at Pittsburg State to knock the Gorillas out of the playoffs.

See HENRY, Page 2B

Judge hits No. 61

TORONTO (AP) — Aaron Judge tied Roger Maris' American League record of 61 home runs in a season with a tiebreaking, two-run drive in the seventh inning that lifted the New York Yankees over the Toronto Blue Jays 8-3 on Wednesday night.

The 30-year-old slugger drove a 94.5 mph belt-high sinker with a full-count from left-hander Tim Lincecum (8-1) over the left-field fence at Rogers Centre. The 117.4 mph drive took just 3.8 seconds to land 394 feet from the plate, and it put the Yankees ahead 5-3.

Judge watched the ball clank off the front of the stands, just below two fans who reached over a railing and tried for a catch. He pumped an arm just before reaching first and exchanged a slap with coach Travis Chapman.

The ball dropped into Toronto's bullpen and was picked up by Blue Jays bullpen coach Matt Buschmann, who turned it over to the Yankees.

Judge's mother and Roger Maris Jr. rose and hugged from front-row



New York Yankees' Aaron Judge grounds out against the Toronto Blue Jays during the fourth inning of a baseball game on Wednesday in Toronto. (NATHAN DENETTE/THE CANADIAN PRESS VIA AP)

seats. He appeared to point toward them after rounding second base, then was congratulated by the entire Yankees team, who gave him hugs after he crossed

the plate.

Judge moved past the 60 home runs Babe Ruth hit in 1927, which had stood as the major league mark until Maris broke it in 1961.

All three stars reached those huge numbers playing for the Yankees.

Barry Bonds holds the big league record of 73 for the San Francisco Giants

in 2001.

Judge had gone seven games without a home run — his longest drought this season was nine in mid-August. This was the Yankees' 155th game of the season, leaving them seven more in the regular season.

The home run came in the fourth plate appearance of the night for Judge, ending a streak of 34 plate appearances without a home run.

Judge is hitting .313 with 130 RBIs, also the top totals in the AL. He has a chance to become the first AL Triple Crown winner since Detroit's Miguel Cabrera in 2012.

The Yankees, who clinched their 20th AL East title in a night earlier, won for the ninth time in 10 games.

Gerit Cole (13-7) allowed three runs and three hits in 6 1/3 innings. Cole was perfect through five before Danny Jansen homered leading off the sixth. Cole struck out four, matching the Yankees season record of 248 set by Ron Guidry in 1978.

PSU volleyball ready for weekend homestand

Staff Reports sports@morningsun.net

Following two consecutive home victories, Pittsburg State volleyball looks to push its current winning streak to four at John Lance Arena this weekend.

The Gorillas will host Emporia State on Friday and Washburn on Saturday with both matches slated for 6 p.m. start times.

Following its 3-2 victory (19-17 in fifth set) over Central Oklahoma on Monday, Pittsburg State has notched a 10-6 record, including a 4-3 mark in the MIAA.

Outside hitter Janae Thurston leads the team

with 154 total kills. Outside hitter Meg Auten has registered 3.25 kills per set, placing her fourth in the MIAA. Auten has 130 total kills and sits 68 kills from 1,000 for her career.

Libero Marissa Bates leads the charge defensively for the Gorillas with 333 total digs. Bates' average of 5.64 digs per set places her second in the conference and sixth in the nation.

Setter Brianna Richard has registered an average of 10.74 assists per set, the third highest mark in the conference. Richard has tallied 623 assists this season.

Emporia State enters its matchup against the Gorillas nursing a 4-11

mark after falling to Newman 3-1 on Sept 24. Sophomore outside hitter Leah Machl leads the Hornets with 159 kills for an average of 2.89 kills per set.

On Saturday, the Gorillas are set to match up against the eighth-ranked Ichabods. Washburn (12-2) claimed a sweep in its last match against Newman on Sept 23. Washburn travels to Missouri Southern on Friday prior to its meeting against the Gorillas.

Outside hitter Jalyn Stevenson leads Washburn with 150 kills. Teammate Hallie Meister is second in the MIAA with a .412 hitting percentage.

Independence races past Pittsburg strikers

Staff Reports sports@morningsun.net

Independence captured the top spot in the Southeast Kansas League standings with an 8-0 victory over Pittsburg on Tuesday in Independence.

The undefeated Bulldogs pushed their winning streak to nine wins, including a 5-0 mark in the SEK. Pittsburg (7-2) suffered its first league loss, dropping to second in the standings with a 5-1 record.

Pittsburg will host Joplin in its third game of the week on Thursday. Independence returns to action on Thursday, traveling to Parsons to take

on the Vikings.

Moss leads Pittsburg runners

Eve Moss placed 29th to lead Pittsburg performers on Tuesday at the Lamar Cross Country Invitational.

Moss finished with a time of 24:18.00. Pittsburg's Allison Frech and Athena Jones finished in 36th and 37th place, respectively. Frech finished in a time of 24:39.10 and Jones finished with a time of 24:49.50.

Carter Bailey led the Pittsburg boys, finishing in 61st with a time of 20:24.00, narrowly ahead of teammate Jaxx Erwin who finished at 20:27.00 to place 63rd.

Pittsburg's Trent Toth came in 90th at 22:02.80 and Weston Howard slotted 92nd at 22:14.90. Kaleb Cronister finished with a time of 24:39.70, Blake Loughmiller finished at 27:17.80 and Noah Oliver finished at 27:28.40.

Monett's Julio Cruz claimed first in the boys event with a time of 16:47.80. St. Michael the Archangel High School notched the team championship, scoring 70 points.

St. Michael's Elsa Henry finished in a time of 20:08.10 to capture first in the girls event. El Dorado Springs High School finished with 55 points to earn the girls team victory.

Frontenac girls win Columbus Invitational

Staff Reports sports@morningsun.net

The Frontenac girls and boys cross country teams took first and second, respectively, at the Columbus Invitational at Brush Creek Golf & Grill in Columbus on Tuesday.

The girls finished first in the varsity race with a total score of 21. Independence finished second, scoring 21 points.

Frontenac dominated the field during Tuesday's race, placing four runners within the top six. Cera Schenck highlighted the efforts of the Raiders, placing second, running a time of 22:15. Alexa Reddick (22:41), Maggie Payne (23:23) and Grace Jones (23:54) finished fourth through sixth, respectively.

In addition, Trinity Lohrmeyer (28:01) placed 18th, Skylynn Carter (28:29) took 20th, and Bailey Walker (29:45) was 24th.

For Northeast, Kylee Dickerson finished 22nd with a time of 28:49.

Independence claimed the varsity boys team title with 42 points. Frontenac closed the meet scoring 59 points. Riverton (63), Caney Valley (79) and Erie (82) closed out the top five.

Tallon Bonine of Frontenac placed second for the Raiders, running a time of 19:40. Gavin Caldwell (21:11) was 10th, Dayton Hutchinson (21:23) 13th, Evan Zafuta (22:56) 21st and Max Cook (27:15) 31st to finish off the scoring for Frontenac.

For Northeast, Nathan Trammell (19:53) placed

fourth. Along with Trammell, Devin Smith (21:45) took 15th, and Bryce Nunn (22:47) was 20th.

Chase Windsor was the lone varsity runner for Southeast as he placed 33rd in 29:41.

GIRLS VARSITY

Team Leaders Frontenac 21, Independence 35.

Individual Leaders 1, Breanna Ross, Erie, 22:06. 2, Cera Schenck, Frontenac, 22:15. 3, Kinsey Baldwin, Parsons, 22:34. 4, Alexa Reddick, Frontenac, 22:41. 5, Maggie Payne, Frontenac, 23:23.

Local Results Frontenac -- 2, Cera Schenck, 22:15. 4, Alexa Reddick, 22:41. 5, Maggie Payne, 23:23. 6, Grace Jones, 23:54. 18, Trinity Lohrmeyer, 28:01. 20, Skylynn Carter, 28:29. 24, Bailey Walker, 29:45.

Northeast -- 22, Kylee Dickerson, 28:49.

BOYS VARSITY

Team Leaders Independence 42, Frontenac 59, Riverton 63, Caney Valley 79, Erie 82.

Individual Leaders 1, Josh Hogge, Independence, 19:21. 2, Tallon Bonine, Frontenac, 19:40. 3, Austin Morrow, Independence, 19:47. 4, Nathan Tammell, Northeast, 19:53. 5, Dillon Leggett, Riverton, 20:09.

Local Results Frontenac -- 2, Tallon Bonine, 19:40. 10, Gavin Caldwell, 21:11. 13, Dayton Hutchinson, 21:23. 21, Evan Zafuta, 22:56. 31, Max Cook, 27:15.

Northeast -- 4, Nathan Tammell, 19:53. 15, Devin Smith, 21:45. 20, Bryce Nunn, 22:47.

Southeast -- 33, Chase Windsor, 29:14.

Chiefs hopeful star kicker Harrison Butker can play vs Bucs

By DAVE SKRETTA AP Sports Writer

KANSAS CITY, Mo. (AP) — The Kansas City Chiefs are hopeful that Harrison Butker, their big-legged kicker whom they so sorely missed last week in Indianapolis, will be able to play when they face the Tampa Bay Buccaneers on Sunday.

Wherever the game is

played.

The Chiefs used journeyman Matt Ammendola the past two weeks in place of Butker, who sprained his plant ankle when he slipped on the shoddy turf in Arizona in Week 1.

But after a solid job in a win over the Chargers, Ammendola missed an early extra point in Indianapolis and then a chip-shot field goal that would

have extended the Kansas City lead to seven.

Instead, the Colts seized the momentum and marched downfield for the go-ahead touchdown in the closing seconds, and the margin in the 20-17 loss for Kansas City wound up being that missed field goal with 8:41 left to play.

"Harrison will go ahead and do a little bit today,"

Chiefs coach Andy Reid said Wednesday, "and we'll just play it by ear."

The Chiefs are still hedging their bets, though. They waived Ammendola, who had won a five-way kicking competition to be the fill-in guy, and signed former Jaguars kicker Matthew Wright to the practice squad.

He would be promoted to the active roster if But-

ker remains unavailable.

Wright appeared in three games for Pittsburgh two years ago and 14 games for Jacksonville, where he connected on 21 of 24 field goals and 13 of 15 extra points. The former Central Florida standout's career long is 56 yards.

See CHIEFS, Page 4B

BASEBALL
 MLB STANDINGS

American League

East Division	W	L	Pct	GB
x-New York	96	59	.619	—
Toronto	87	69	.558	9½
Tampa Bay	85	70	.548	11
Baltimore	80	75	.516	16
Boston	74	81	.477	22

Central Division

	W	L	Pct	GB
x-Cleveland	87	68	.561	—
Chicago	76	79	.490	11
Minnesota	76	79	.490	11
Kansas City	63	92	.406	24
Detroit	62	92	.403	24½

West Division

	W	L	Pct	GB
x-Houston	102	53	.658	—
Seattle	83	70	.542	18
Los Angeles	68	86	.442	33½
Texas	66	87	.431	35
Oakland	56	98	.364	45½

Tuesday's Games

Detroit 4, Kansas City 3, 10 innings
 N.Y. Yankees 5, Toronto 2
 Tampa Bay 6, Cleveland 5, 11 innings
 Minnesota 4, Chicago White Sox 0
 Boston 13, Baltimore 9
 Houston 10, Arizona 2
 L.A. Angels 4, Oakland 3
 Texas 5, Seattle 0
Wednesday's Games
 Cleveland 2, Tampa Bay 1, 10 innings
 Detroit 2, Kansas City 1
 Boston 3, Baltimore 1
 N.Y. Yankees 8, Toronto 3
 Minnesota 8, Chicago White Sox 4
 Arizona at Houston, 7:10 p.m.
 Oakland at L.A. Angels, 8:38 p.m.
 Texas at Seattle, 8:40 p.m.

Thursday's Games
 Chicago White Sox (Giolito 10-9) at Minnesota (Varland 0-2), 12:10 p.m.
 Kansas City (Heasley 4-8) at Detroit (Rodriguez 4-5), 12:10 p.m.
 Baltimore (Baumann 1-3) at Boston (Eovaldi 5-3), 12:35 p.m.
 Tampa Bay (Springs 9-4) at Cleveland (Quantrill 14-5), 5:10 p.m.
 Oakland (Irvin 9-12) at L.A. Angels (Ohtani 14-8), 8:38 p.m.
 Texas (Gray 7-7) at Seattle (Gonzales 10-15), 8:40 p.m.

National League

East Division	W	L	Pct	GB
z-New York	98	58	.628	—
z-Atlanta	97	59	.622	1
Philadelphia	83	71	.539	14
Miami	64	91	.413	33½
Washington	54	101	.348	43½

Central Division

	W	L	Pct	GB
x-St. Louis	90	65	.581	—
Milwaukee	82	72	.532	7½
Chicago	69	86	.445	21
Cincinnati	60	96	.385	30½
Pittsburgh	59	97	.378	31½

West Division

	W	L	Pct	GB
x-Los Angeles	106	48	.688	—
San Diego	86	68	.558	20
San Francisco	76	78	.494	30
Arizona	71	84	.458	35½
Colorado	65	89	.422	41

Tuesday's Games

Pittsburgh 4, Cincinnati 1
 Atlanta 8, Washington 2
 Chicago Cubs 2, Philadelphia 1
 Miami 6, N.Y. Mets 4
 St. Louis 6, Milwaukee 2
 Houston 10, Arizona 2
 San Francisco 5, Colorado 2
 San Diego 4, L.A. Dodgers 3, 10 innings
Wednesday's Games
 Pittsburgh 4, Cincinnati 3, 10 innings
 Washington 3, Atlanta 2, 10 innings
 N.Y. Mets 5, Miami 4, 10 innings
 Chicago Cubs 4, Philadelphia 2
 St. Louis at Milwaukee, 6:40 p.m.
 Arizona at Houston, 7:10 p.m.
 L.A. Dodgers at San Diego, 8:40 p.m.

Colorado at San Francisco, 8:45 p.m.
Thursday's Games
 Philadelphia (Suárez 10-5) at Chicago Cubs (Assad 1-2), 1:20 p.m.
 Miami (Garrett 3-6) at Milwaukee (Lauer 10-7), 6:40 p.m.
 L.A. Dodgers (Heaney 3-3) at San Diego (Manaea 7-9), 8:40 p.m.
 Colorado (Feltner 3-8) at San Francisco (Rodón 13-8), 8:45 p.m.

FOOTBALL
 PREP SCHEDULE

Friday's Games

INDEPENDENTS
 Pittsburg at Paola
 Riverton at Parsons
CNC LEAGUE
 St. Mary's Colgan at Northeast Frontenac at Columbus
 Girard at Prairie View
 Galena at Baxter Springs
 Riverton at Parsons

SOUTHEAST KANSAS LEAGUE

Labette County at Fort Scott
 Coffeyville at Wamego
 Chanute at Independence
THREE RIVERS LEAGUE
11-Man
 Southeast at Pleasanton
 St. Mary's Colgan at Northeast Jayhawk-Linn at Central Heights
 Erie at Uniontown
8-Man
 St. Paul at Crest
 Oswego at Sedan
 Marmaton Valley at Hartford
 Yates Center at Cedar Vale-Dexter
6-Man
 Waverly at Chetopa
 Altoona-Midway at Wetmore

PREP STANDINGS

Independents	W	L
Parsons	4	0
Pittsburg	2	2
CNC League	W	L
Girard	4	0
SM Colgan	3	1
Baxter Springs	3	1
Frontenac	2	2
Galena	2	2
Columbus	1	3
Riverton	0	4
Note: CNC League does not play a conference schedule because of conflicting district schedules.		

Southeast Kansas League

	Conf.		Overall	
	W	L	W	L
Coffeyville	1	0	4	0
Fort Scott	1	0	1	3
Chanute	0	0	4	0
Labette County	0	0	0	4
Independence	0	2	1	3

Three Rivers League

11-Man				
	Conf.		Overall	
	W	L	W	L
Jayhawk-Linn	3	0	4	0
Pleasanton	2	0	3	1
Southeast	0	1	0	4
Northeast	0	2	0	4
Uniontown	0	2	0	4
8-Man				
	Conf.		Overall	
	W	L	W	L
Crest	2	0	3	1
Oswego	3	1	3	1
Marmaton Valley	1	1	2	2
St. Paul	1	1	2	2
Yates Center	0	4	0	4

Class 5A East

	W	L	Pts.
Mill Valley	4	0	52
Highland Park	4	0	52
Topeka Seaman	3	1	32
De Soto	3	1	25
Shawnee Heights	3	1	22
Pittsburg	2	2	7
Leavenworth	2	2	5
KC Sumner Acad.	2	2	-12
Spring Hill	1	3	-16
BV Southwest	1	3	-20
Lansing	1	3	-24
KC Washington	1	3	-26
Emporia	1	3	-38
KC Harmon	0	4	-52

KC Turner	0	4	-52
Topeka West	0	4	-52
Note: Points are based on score differential with a maximum of +/- 13.			

Class 4A East

	W	L	Pts
Chanute	4	0	52
Eudora	4	0	52
Atchison	4	0	46
Bishop Miege	4	0	46
Louisburg	3	1	35
St. Thomas Aquinas	3	1	35
Basehor-Linwood	3	1	6
KC Piper	2	2	10
Tonganoxie	2	2	-2
Paola	2	2	-12
Ottawa	1	3	-8
Bonner Springs	1	3	-26
KC Schlagle	1	3	-26
St. James Acad.	1	3	-35
Fort Scott	1	3	-38
Labette County	0	4	-45
Note: Points are based on score differential with a maximum of +/- 13.			

Class 3A District 1

	Dist.		Overall	
	W	L	W	L
Parsons	1	0	4	0
Galena	1	0	2	2
Frontenac	0	0	2	2
Baxter Springs	0	1	3	1
Columbus	0	1	1	3

Class 3A District 2

	Dist.		Overall	
	W	L	W	L
Iola	1	0	2	2
Burlington	1	0	2	2
Girard	0	0	4	0
Prairie View	0	1	2	2
Anderson County	0	1	2	2

Class 2A District 1

	Dist.		Overall	
	W	L	W	L
Caney Valley	1	0	3	1
Fredonia	1	0	3	1
Neodesha	0	0	1	3
Cherryvale	0	1	2	2
Riverton	0	1	0	4

Class 1A District 1

	Dist.		Overall	
	W	L	W	L
SM Colgan	1	0	3	1
Erie	1	0	1	3
Uniontown	0	0	0	4
Northeast	0	1	0	4
Southeast	0	1	0	4

COLLEGE SCHEDULE

Thursday's Games

SOUTH
 SC State (1-2) at South Carolina (2-2), 7 p.m.
FAR WEST
 Utah St. (1-3) at BYU (3-1), 8 p.m.

Friday's Games

EAST
 Penn (2-0) at Dartmouth (1-1), 7 p.m.
SOUTH
 UTSA (2-2) at Middle Tennessee (3-1), 7:30 p.m.
SOUTHWEST
 Tulane (3-1) at Houston (2-2), 7 p.m.
FAR WEST
 San Diego St. (2-2) at Boise St. (2-2), 8 p.m.
 Washington (4-0) at UCLA (4-0), 10:30 p.m.
 New Mexico (2-2) at UNLV (3-1), 11 p.m.

Saturday's Games

MIAA
 Mo. Southern (3-1) at Pittsburg St. (4-0), 2 p.m.
 Northeastern St. (1-3) at Cent. Missouri (0-4), 1 p.m.
 Mo. Western (2-2) at NW Missouri (3-1), 1:30 p.m.
 Cent. Oklahoma (2-2) at Lincoln (0-4), 2 p.m.
 Emporia St. (2-2) at Washburn (3-1), 4 p.m.
 Fort Hays St. (1-3) at Neb.-Kearney (3-1), 7 p.m.
EAST
 Howard (1-3) at Yale (1-1), 11 a.m.
 Louisville (2-2) at Boston College (1-3), 11 a.m.
 Georgia St. (0-4) at Army (1-2), 11 a.m.
 Villanova (2-2) at Maine (0-3),

noon
 Princeton (2-0) at Columbia (2-0), noon
 Cornell (1-1) at Colgate (1-3), noon
 Holy Cross (4-0) at Harvard (2-0), noon
 Fresno St. (1-2) at Uconn (1-4), 2:30 p.m.
 Lafayette (1-3) at Bucknell (0-3), 2:30 p.m.
 Miami (Ohio) (2-2) at Buffalo (1-3), 2:30 p.m.
 Gardner-Webb (1-3) at Marshall (2-2), 2:30 p.m.
 Northwestern (1-3) at Penn St. (4-0), 2:30 p.m.
 Michigan St. (2-2) at Maryland (3-1), 2:30 p.m.
 Towson (2-2) at Delaware (4-0), 2:30 p.m.
 Wagner (0-3) at Syracuse (4-0), 4 p.m.
 Brown (1-1) at Rhode Island (2-2), 5 p.m.
 Georgia Tech (1-3) at Pittsburgh (3-1), 7 p.m.

SOUTH

Temple (2-2) at Memphis (3-1), 11 a.m.
 Kentucky (4-0) at Mississippi (4-0), 11 a.m.
 Texas State (2-2) at James Madison (3-0), 12:30 p.m.
 Richmond (3-1) at Elon (3-1), 1 p.m.
 South Florida (1-3) vs. East Carolina (2-2) at Boca Raton, Fla., 1:30 p.m.
 Tennessee Tech (1-2) at UT Martin (2-2), 2 p.m.
 Wake Forest (3-1) at Florida St. (4-0), 2:30 p.m.
 Virginia Tech (2-2) at North Carolina (3-1), 2:30 p.m.
 The Citadel (1-2) at Appalachian St. (2-2), 2:30 p.m.
 VMI (1-2) at W. Carolina (2-2), 2:30 p.m.
 Texas A&M (3-1) at Mississippi St. (3-1), 3 p.m.
 Georgia Southern (3-1) at Coastal Carolina (4-0), 3 p.m.
 Nicholls (0-4) at Northwestern St. (1-3), 3:30 p.m.
 South Alabama (3-1) at Louisiana-Lafayette (2-2), 4 p.m.
 Liberty (3-1) at Old Dominion (2-2), 5 p.m.
 S. Utah (3-1) at E. Kentucky (2-2), 5 p.m.
 UTEP (2-3) at Charlotte (1-4), 5 p.m.
 Murray St. (0-4) at SE Louisiana (2-2), 6 p.m.
 Grambling St. (1-3) vs. Prairie View (2-2) at Dallas, 6 p.m.
 LSU (3-1) at Auburn (3-1), 6 p.m.
 Troy (2-2) at W. Kentucky (3-1), 6 p.m.
 Virginia (2-2) at Duke (3-1), 6:30 p.m.
 NC State (4-0) at Clemson (4-0), 6:30 p.m.
 Chattanooga (3-1) at ETSU (2-2), 6:30 p.m.

MIDWEST

Purdue (2-2) at Minnesota (4-0), 11 a.m.
 Illinois (3-1) at Wisconsin (2-2), 11 a.m.
 Michigan (4-0) at Iowa (3-1), 11 a.m.
 Texas Tech (3-1) at Kansas St. (3-1), 11 a.m.
 Missouri St. (2-2) at North Dakota (2-2), noon
 Drake (0-4) at Dayton (2-1), noon
 N. Illinois (1-3) at Ball St. (1-3), 1 p.m.
 Cleveland (2-1) at N. Dakota St. (3-1), 2 p.m.
 Rutgers (3-1) at Ohio St. (4-0), 2:30 p.m.
 Bowling Green (1-3) at Akron (1-3), 2:30 p.m.
 Cent. Michigan (1-3) at Toledo (2-2), 2:30 p.m.
 Ohio (2-2) at Kent St. (1-3), 2:30 p.m.
 Iowa St. (3-1) at Kansas (4-0), 2:30 p.m.
 Indiana St. (1-2) at N. Iowa (1-3), 4 p.m.
 New Hampshire (3-1) at W.

Michigan (1-3), 5 p.m.
 Georgia (4-0) at Missouri (2-2), 6:30 p.m.
 S. Illinois (2-2) at Illinois St. (2-1), 6:30 p.m.
 Indiana (3-1) at Nebraska (1-3), 6:30 p.m.

SOUTHWEST

Oklahoma (3-1) at TCU (3-0), 11 a.m.
 Oklahoma St. (3-0) at Baylor (3-1), 2:30 p.m.
 Sam Houston St. (1-2) vs. Stephen F. Austin (2-2) at Houston, 2:30 p.m.
 Alabama (4-0) at Arkansas (3-1), 2:30 p.m.
 FAU (2-3) at North Texas (2-3), 3 p.m.
 Houston Baptist (1-2) at Lamar (0-4), 3 p.m.
 Austin Peay (4-1) at Cent. Arkansas (1-3), 4 p.m.
 McNeese St. (1-3) at Incarnate Word (3-1), 6 p.m.
 Louisiana-Monroe (2-2) at Arkansas St. (1-3), 6 p.m.
 Cincinnati (3-1) at Tulsa (2-2), 6 p.m.
 UAB (2-1) at Rice (2-2), 6:30 p.m.
 West Virginia (2-2) at Texas (2-2), 6:30 p.m.

FAR WEST

Navy (1-2) at Air Force (3-1), 11 a.m.
 Oregon St. (3-1) at Utah (3-1), 1 p.m.
 Montana (4-0) at Idaho St. (0-4), 2 p.m.
 Stetson (3-1) at San Diego (1-3), 3 p.m.
 N. Arizona (1-3) at Portland St. (0-3), 4 p.m.
 California (3-1) at Washington St. (3-1), 4:30 p.m.
 San Jose St. (2-1) at Wyoming (3-2), 6:30 p.m.
 FIU (1-2) at New Mexico St. (1-4), 7 p.m.
 Sacramento St. (3-0) at Cal Poly (1-2), 7 p.m.
 Abilene Christian (3-1) at Utah Tech (1-3), 8 p.m.
 N. Colorado (2-2) at Idaho (2-2), 8 p.m.
 Colorado (0-4) at Arizona (2-2), 8:30 p.m.
 UC Davis (1-3) at Montana St. (3-1), 9:15 p.m.
 Arizona St. (1-3) at Southern Cal (4-0), 9:30 p.m.
 Stanford (1-2) at Oregon (3-1), 10 p.m.

Sunday's Games

SOUTH

E. Washington (1-2) at Florida (2-2), 11 a.m.
 SMU (2-2) at UCF (3-1), noon

NFL STANDINGS
 AMERICAN CONFERENCE

East	W	L	T	Pct	PF	PA
Miami	3	0	0	1.000	83	64
Buffalo	2	1	0	.667	91	38
N.Y. Jets	1	2	0	.333	52	81
New England	1	2	0	.333	50	71

South

	W	L	T	Pct	PF	PA
Jacksonville	2	1	0	.667	84	38
Indianapolis	1	1	1	.500	40	61
Tennessee	1	2	0	.333	51	84
Houston	0	2	1	.167	49	59

North

	W	L	T	Pct	PF	PA
Baltimore	2	1	0	.667	99	77
Cleveland	2	1	0	.667	85	72
Cincinnati	1	2	0	.333	64	55
Pittsburgh	1	2	0	.333	54	66

West

	W	L	T	Pct	PF	PA
Denver	2	1	0	.667	43	36
Kansas City	2	1	0	.667	88	65
L.A. Chargers	1	2	0	.333	58	84
Las Vegas	0	3	0	.000	64	77

NATIONAL CONFERENCE

East	W	L	T	Pct	PF	PA
Philadelphia	3	0	0	1.000	86	50
Dallas	2	1	0	.667	46	52
N.Y. Giants	2	1	0	.667	56	59
Washington	1	2	0	.333	63	82



Milwaukee Brewers' Andrew McCutchen hits a single during the seventh inning of a baseball game against the St. Louis Cardinals on Wednesday in Milwaukee. (AP PHOTO/MORRY GASH)

Brewers boost playoff hopes with 5-1 victory over Cardinals

By ANDREW WAGNER
Associated Press

MILWAUKEE (AP) — Brandon Woodruff struck out 10 over six scoreless innings and Devin Williams delivered four big outs late to boost the Milwaukee Brewers' playoff hopes with a 5-1 victory over the St. Louis Cardinals on Wednesday night. The victory, Milwaukee's first since last Saturday at Cincinnati, combined with the Phillies' loss to the Cubs in Chicago moved the Brewers within a game of Philadelphia for the third and final NL wild-card spot with seven to play. Woodruff (13-4) was only at 98 pitches when Matt Bush took over to start the seventh. The move backfired immediately when Andrew Knizner led off the inning with his second homer in as many days to make it a 2-1 game. After Ben DeLuzio followed with a double, Bush walked Brendan Donovan

before getting his first out of the inning when Dylan Carlson grounded out to first. Milwaukee then turned to Williams, who intentionally walked pinch-hitter Lars Nootbar to load the bases and got out of the jam when Juan Ypez grounded into a double play. Williams came up big again in the eighth, stranding runners at the corners with back-to-back strikeouts of Knizner and DeLuzio. Cardinals starter Jose Quintana (6-7) struck out seven in five innings. He allowed only one run on an RBI single to Hunter Renfroe in the third. Milwaukee added an insurance run in the fifth on Keston Hiura's RBI double off Steven Matz and broke the game open with a three-run eighth, capped by Victor Caratini's two-run, ground-rule double. **TRAINER'S ROOM** Cardinals: RHP Jordan Hicks (arm fatigue and

neck spasms) has been making good progress with his throwing program and will throw off a mound Friday then again on Sunday. If all goes well, he could get activated in time for St. Louis' season-ending series at Pittsburgh and be available for the start of the playoffs. Brewers: RHP Adrian Houser was placed on the 15-day injured list and miss the rest of the regular season because of a grade 2 strain of his right groin. RHP Justin Topa was recalled from Triple-A Nashville to replace Houser on Milwaukee's active roster. **UP NEXT** Cardinals: Off Thursday before beginning a series against the Pirates on Friday. Brewers: Milwaukee opens a four-game series against the Marlins with LHP Eric Lauer (10-7, 3.96 ERA) going up against Miami lefty Braxton Garrett (3-6, 3.52 ERA).

CHIEFS

Continued from Page 1B

"I don't know (about Wright) other than his workout out here. I haven't been in a game with him," Reid said. "He had a good workout yesterday and you would hope that transfers in. He does have some experience." Just not the same level as Butker, who has emerged alongside Baltimore's Justin Tucker as one of the NFL's best kickers. He has converted 94% of his extra points and 90% of his field-goal tries during five-plus seasons, including a 54-yarder made while nursing a sore ankle against the Cardinals. And Butker might have the strongest leg in the league, with 21 makes over 50 yards and a career-best of 58 yards, which gives Kansas City a chance to score any time it crosses

midfield. One thing that could factor into the decision to play him: the location of the game. As of Wednesday, the Chiefs were still due to play Sunday night on the natural grass surface at Tampa Bay, which was getting dumped on courtesy of Hurricane Ian and could be somewhat compromised. If the NFL decides to move the game, it would be played on the artificial surface inside U.S. Bank Stadium in Minnesota. "We're not sure where we're going to play," Reid said, "but wherever we need to go, we'll go. We'll get ourselves ready for that. When the league announces it, we'll move forward in that direction. But right now we know nothing. "And listen, my heart goes out to the people of Tampa. I haven't quite followed it and know how

much it's hit or will hit, but from what I've heard it could be a big one. My heart goes out to them." NOTES: The Chiefs activated CB Nazeeh Johnson from the practice squad Wednesday. They also signed LB Elijah Lee, who was waived the previous day, to replace him on the practice squad. ... The Chiefs signed DT Cortez Broughton to the practice squad this week. The seventh-round pick of the Chargers in 2019 spent last season on the Kansas City practice squad. He'd been waived with an injury designation in July and placed on the reserve/PUP list after clearing waivers. ... DE Mike Danna (calf), RB Ronald Jones II (illness) and WR Mecole Hardman (bruised foot) did not practice Wednesday, though Reid sounded optimistic that Hardman will play on Sunday. "I think the heel affected him a bit this past week," Reid said.

Displaced Bucs avoid Ian, begin preparation to face Chiefs

By FRED GOODALL
AP Sports Writer

The Tampa Bay Buccaneers, who moved their football operations to South Florida to avoid Hurricane Ian, remain hopeful of being able to return home to play the Kansas City Chiefs on Sunday night. The team practiced at the Miami Dolphins' training facility on Wednesday, describing the experience as different, but insisting the disruption to their routine will not hinder their ability to prepare for the team they beat in the Super Bowl two seasons ago. Family members, and even some pets, accompanied players and coaches in relocating ahead of the storm making landfall on Florida's west coast. "The biggest challenge, I think we've already cleared, is just keeping their families safe. Everyone's loved ones are safe, and that's No. 1. Houses, and the monetary things, you don't really worry about. If the family's safe, you can kind of concentrate on football," coach Todd Bowles said. "What we do is really small entertainment for people who go through a lot of rough things, and hopefully we can provide that," Bowles added via a Zoom call from the Dol-

phins' complex in Miami Gardens. "But it's bigger than just a football team." NFL executive Jeff Miller said Wednesday that the game was still scheduled to be played in Tampa on Sunday night. If the teams can't play at Raymond James Stadium — a decision that could be made as late as Friday — the much-anticipated matchup between quarterbacks Tom Brady and Patrick Mahomes will be moved to Minneapolis. This is not the first time the Bucs have evacuated players and families with a hurricane approaching. Hurricane Irma forced postponement of a Week 1 matchup against the Dolphins in 2017, when the Bucs flew some players and their families to Charlotte, North Carolina, to wait out the storm. Others chose to drive to destinations in north Florida, Alabama and Georgia, while the NFL rescheduled the game to a bye date shared by the Bucs and Dolphins. "Everybody that wanted to come could come, familywise and otherwise, including pets," Bowles said, adding the club initially explored the prospect of moving practice to West Virginia. "But I think people still would have been away from their families. Even though the families could

have come there, it would have been a little further away as far as hotels are situated," Bowles said. "Miami came up, and it looked like it wasn't going to get hit as hard. ... It was an easier trip, and people who had pets and everything else, and older grandparents that were with them, could drive down to be closer to their families." One player — linebacker Devin White — was not able to take his animals to South Florida with him. He has a stable or horses and is an avid rider. "I think my barn is more expensive than my house," White said. "I've been watching the cameras, and I have somebody working at the barn that stayed behind. So hopefully, everybody there is safe and we can get past it." Bowles said the thoughts of players and coaches also were with the community they left behind. "Our thoughts are with the city of Tampa right now. Where we have to play — hopefully it is Tampa and everything is fine. That means we're not damaged too much," Bowles said. "If we have to go play elsewhere, we just have to focus and lock in. No one's going to feel sorry for us. We've got to be ready to play."

LIV Golf refutes report of deal to buy TV time on FS1

By DOUG FERGUSON
AP Golf Writer

Saudi-funded LIV Golf refuted a report Tuesday that it was close to a U.S. television deal in which it would buy time to be shown on FS1. Golfweek cited multiple sources it did not identify in saying the agreement is still being finalized. It would go against what Greg Norman, the CEO and commissioner of LIV Golf, told a Chicago radio station two weeks ago when he said, "We're talking to four different networks, and live conversations where offers are being put on the table. They can see what we're delivering." LIV Golf issued a statement that the report was "incomplete and inaccurate," and that it is ahead of schedule in its inaugural year, including such areas as broadcast rights. "As we have stated previously, LIV Golf is just beginning its process and is in active discussions with several companies about broadcasting the LIV Golf League," the statement said. "We caution that no one should draw any conclusions about potential media rights given that we are still in the middle of negotiations with several outlets."

Fox Sports to declined comment. Networks typically pay a rights fee to broadcast a sport. The PGA Tour, for example, this year began an expanded media rights deal for its tournaments to be shown on CBS, NBC, Golf Channel and ESPN+. The nine-year deal is worth an estimated \$7 billion. In this case, LIV Golf would pay for the time slot and be responsible for the cost of production and any advertising to be sold. In some time-buy cases, the deal includes a few promotional spots to let viewers know when it will be aired. But any deal, even a time buy, would give LIV Golf what it desperately needs — TV viewership on an American linear channel. The league already has paid enormous signing fees — some reported in the \$150 million range — to attract players, and each tournament offers \$25 million in prize money. It does not have any visible corporate support. Getting the major networks seemed to be a long shot because of their existing agreements with the PGA Tour and the animosity between the rival circuits, along with the source of LIV Golf's deep pockets — Saudi Arabia's sovereign wealth fund —

that brought protests to some tournaments staged in the United States over the summer. The Wall Street Journal recently reported Apple and Amazon were not interested. LIV Golf has been shown only on its YouTube channel, Facebook and its website, and viewership numbers have been modest. The series is playing next month in Thailand and Saudi Arabia before ending its inaugural season near Miami for a \$50 million team championship. The 54-hole event has been moved to a Sunday conclusion. It was not clear if any television deal would start in Miami from Oct. 28-30 or wait until 2023, when LIV Golf has said it would have a full schedule. The 2023 schedule is not likely to be released until November. If the time buy is with FS1, there could be problems with September and October when the cable network has a steady diet of college football on Saturdays. Golfweek reported LIV wanted a rights fee for the second year of any deal and a guaranteed time slot, but Fox wasn't interested.

Miguel Cabrera hits 507th homer; Tigers beat Royals 2-1

By DAVE HOGG
Associated Press

DETROIT (AP) — Miguel Cabrera hit his 507th home run, Detroit got nine innings from its bullpen and the Tigers beat the Kansas City Royals 2-1 on Wednesday night for their fifth straight victory. MJ Melendez led off the game with a home run for

Kansas City, and Cabrera hit a two-run shot in the bottom of the inning. He has 1,845 RBIs, moving him past Carl Yastrzemski for 12th place on the career list. Scheduled Tigers starter Matt Manning was scratched just before game time because of arm fatigue. Will Vest pitched the first inning, allowing Melendez's ho-

mer, and the next six relievers combined for eight shutout innings. Gregory Soto pitched the ninth for his 29th save. The Tigers need one win in their last eight games to avoid 100 losses. Kansas City had 10 hits and six walks, but Kyle Isbel was thrown out stealing twice and the Royals left 13 batters on base.

Royals starter Daniel Lynch (4-12) allowed two runs on five hits in six innings. He walked one and struck out four. The Tigers loaded the bases with one out in the third, but Cabrera bounced into a 6-4-3 double play. Kansas City loaded the bases in the sixth and seventh innings, but Andrew Chafin (3-3) came

out of the bullpen to retire MJ Melendez in the sixth, then got out of his own jam in the seventh by striking out Hunter Dozier and getting Drew Waters to ground out. **STATISTICAL ANOMALY** Because Manning was listed as the starting pitcher on A.J. Hinch's lineup card, he will be listed in the box score and credited with an appear-

ance. However, because he didn't pitch to the first batter of the game, Vest gets credit for the first start of his 88-game major-league career. **UP NEXT** The teams finish their season series Thursday. Eduardo Rodriguez (4-5, 4.37) is scheduled to start for the Tigers against Jonathan Heasley (4-8, 4.87).



A1air

HEATING & COOLING

620-235-0600

New Installs • Preventative Maintenance • Repairs • Commercial & Residential

[www. A1aircool.com](http://www.A1aircool.com) • 1035 N Hwy 69 • Frontenac

FREE ESTIMATES



FICARELLAS' CARPET & UPHOLSTERY CLEANING SERVICE

References Available

LICENSED & INSURED

Deep Down Extraction Cleaning & Encapsulation Cleaning

COMMERCIAL & RESIDENTIAL

Over 20 Years of Experience

Call / Text: 620-778-6632 OR 417-208-7251



Now Taking Reservations

1912 N Broadway
Pittsburg, KS 66762
(620) 404-4053

Hours:
Tues-Thurs 3:30-8:30
Fri and Sat 3:30-9:30
Closed Sunday-Monday