

Obituaries

Judith Brisby Wright



Graveside services for Mrs. Judith Brisby Wright, age 87 of Tullahoma, were conducted Tuesday, Nov. 22, 2022, in Bryant Cemetery in Lewisburg, TN at 1:30 p.m.. Mrs. Judith departed this life on Nov. 19, 2022. She was born in Marshall County, Tennessee, on Nov. 15, 1935. She was a graduate of Marshall County High School, attended the University of Alabama in Tuscaloosa, and was a graduate of Cumberland University. She resided in Tullahoma, TN, with her husband of over 60 years and was a member of Tullahoma First United Methodist Church.

music and was an accomplished pianist. She also enjoyed swimming, gardening, and spending time outdoors.

Judy worked as an accountant for the Department of Defense at Arnold Engineering Development Center prior to her retirement. She then worked with her husband to manage three family businesses.

Judy is survived by her husband, L.E. Wright and her children, John (Lisa) Wright, Tullahoma, TN, and Emily (Kyle) Clemmer, Mur-

freesboro, TN; six grandchildren; Justin (Taryn) Walker, Prospect, KY, Lindsey (Abner) Hennon, Cedar Hill, TN, Samual (Samantha) Wright, Tullahoma, TN, and Morgan Clemmer, Benjamin Clemmer, and Patrick Clemmer, Murfreesboro, TN; and four great grandchildren. Judy is preceded in death by her daughter, Elise Wright Walker; her parents, Clayton and Lucille Brisby; and her sister, Jone Hardy Richardson.

Tullahoma Funeral Home was charge of arrangements and are honored to serve the Wright family.

In lieu of flowers, the family request donations be made to Tullahoma First United Methodist Church, Henry Center, in memory of Judy.

Online condolences and memories can be shared at www.tullahomafuneralhome.com

Rotary donates to Goat board



Phil George, Rotary Membership Chair, presented Goats, Music & More Board of Directors, Edmund Roberts and Jeff Haislip and Chairman of Goats, Music & More, Jack Cathey, a donation in the amount of \$3000.

Conference

(Continued from Page 1)

the cultural arts contest, fashion revue, and creative writing.

The conference was declared officially open at the general session Monday evening, November 14, by the TAFCE President Gloria Fisher, Cumberland County. City of Franklin Vice Mayor Clyde Barnhill declared November 14 as "FCE night in Williamson County". Dr. Janet Fox delivered greetings from UT, and Judy Fullmer, NAFCE President from Kansas, brought greetings from the National Association for Family and Community Education.

The Tennessee Association for Family and Community Education (TAFCE) chose Saddle Up! Nashville as their service project for this conference. Audrey Kidd from Saddle Up! in Williamson County, was present at the general session on Tuesday to accept the monetary donation made by the group to support their work using equine sup-

port with persons (3 years to young adult) with physical disabilities.

At the general session on Tuesday, a local author and educator, Peggy O'Neal Peden, shared confidence points of entering the publishing world. She also conducted a book club review for her first release, "Your Killin' Heart."

Her second education session guided participants through the beginnings of book writing using journaling.

The Cowgirl Prom attendees were captivated by Dan Harrell aka 'Cowboy Dan's' down-home humor. Harrell is known for his videos educating children about agriculture and living.

Conference attendees were offered options for educational tours, walk-in craft classes, creative craft classes, and education sessions. Topics of workshops included suicide prevention, dance fitness, chair volleyball, the history of FCE name changes, wreaths for all occasions, cooking Southern, scrapbooking your memories, coffee talk, and every-

thing you wanted to know about insurance but were afraid to ask.

The opening session and the Cowgirl Prom were opportunities for FCE members to receive awards in cultural arts (such as beading, chair making, needlecrafts, quilting, etc.), fashion review, and creative writing. Winners from Marshall County were Peggy Hunter, Deborah Foster, and Cindy Perka.

Family and Community Education (FCE) is an organization of volunteers who work together to build strong families and communities. Educational materials are created and utilized to strengthen knowledge and skills.

Resources are provided to develop leadership skills, enabling people to make a difference. Ultimately, FCE strives to make our communities a better place in which to live. To learn more about FCE club work in your area, contact your local UT Extension Office.

Maury Regional Medical Center receives grade 'A' for patient safety

COLUMBIA, Tenn. — For the 18th consecutive term, Maury Regional Medical Center (MRMC) has received an "A" grade, the highest possible ranking, from The Leapfrog Hospital Safety Grade for the fall of 2022.

This is a national distinction that acknowledges the center's accomplishments in protecting patients from preventative harm and errors.

The Leapfrog Group is an independent national watchdog organization with a 10-year history of assigning letter grades to general hospitals throughout the United States, based on a hospital's ability to prevent medical errors and harm to patients. The grading system is peer-reviewed, fully transparent, and free to the public. Hospital Safety Grade results are based on more than 30 national performance measures and are updated each fall and spring.

"The protection and safety of all patients is our top priority," said Martin Chaney, MD, Maury Regional Health

CEO. "This acknowledgement from The Leapfrog Hospital Safety Grade is a direct reflection of the diligence our employees have when caring for patients. I extend my utmost appreciation and gratitude to all Maury Regional Medical Center staff members who consistently make this recognition possible."

The Leapfrog Hospital Safety Grade uses up to 30 national performance measures of publicly available hospital safety data to assign grades to nearly 3,000 U.S. acute-care hospitals twice per year. The methodology of this process is peer-reviewed and fully transparent with results free to the public.

"I applaud the hospital leadership and workforce for their strong commitment to safety and transparency," said Leah Binder, president and CEO of The Leapfrog Group. "An 'A' Safety Grade is a sign that hospitals are continuously evaluating their performance, so that they can best protect patients. Your hospital team should be

extremely proud of their dedication and achievement."

To learn more about MRMC's commitment to quality — including accreditations, certifications and recognitions — visit MauryRegional.com/Quality. Visit HospitalSafetyGrade.org for more information about the Hospital Safety Grade, including details on individual hospital grades and rankings.

Chapel Hill

(Continued from Page 1)

pressed about the policy as originally written.

The resulting version passed without issue.

Also passing without issue was the final budget amendment necessary for the town to join the Tennessee Consolidated Retirement System. Regarded as one of the best and most stable retirement plans in the nation, the move is a

boon to town employees.

Water bills will now be able to be adjusted on a case by case basis, a request from the town's utility for more flexibility in dealing with resolution of leaks impacting customers.

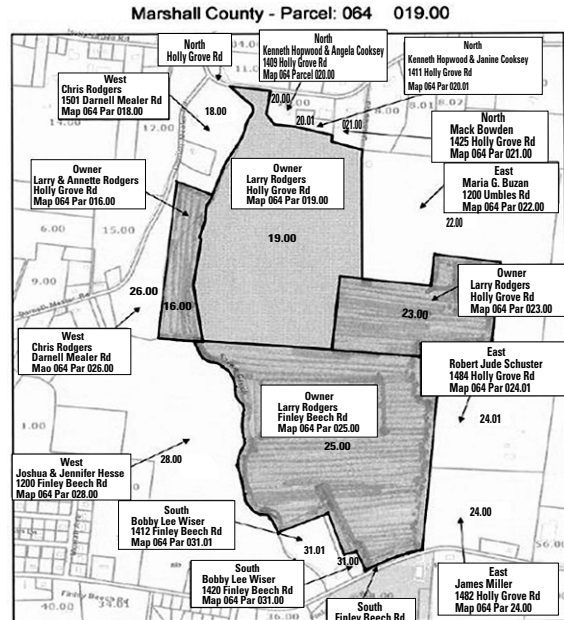
The town also adopted new standardized utility specifications for the town, a revised personnel policy for employees, and agreed to have town ordinances codified and revised for clarity.

Notice of Public Hearing

The Mayor and Council of the City of Lewisburg will hold a Public Hearing **Tuesday, December 13, 2022, at 5:50 p.m.** at the Lewisburg City Hall, 131 East Church Street, followed by their regular meeting at 6:00 p.m. The public hearing will be to hear comments or opinions concerning the following:

1. Annexation Resolution 22-36, a Resolution approving the annexation and rezoning request by owners' consent of property located on Holly Grove and Finley Beech Roads, Map, 064, Pcl:019.00, Annexation of Approx 146 acres and Rezone Approx 149.92 acres to LDRPUD Low-Density Residential Planned Unit Development. Spring Valley Estates Subdivision. Developer on behalf of owner Triple J. Investments LLC, (Annette Rodgers).
2. Plan of Services for the annexation of property described as Spring Valley Estates (Holly Grove Road & Finley Beech Road) consisting of approximately 146 +/- acres. Owner – Annette Rodgers.

Proposed Plan of Services is available for public viewing at the following locations: Lewisburg City Hall, Marshall County Courthouse Annex, Marshall County Library and City of Lewisburg website, www.lewisburgtn.gov.



**Too Much Stuff...
Not Enough Space**

Marshall County
Tribune
Classifieds
359-1188



Buy or Sell with the

Real Estate company in Marshall County!

David Jent Realty & Auction
430 West Commerce, Lewisburg 359-6631
4682 Nashville Hwy, Chapel Hill 364-5678
Lic 1015 and 4438