

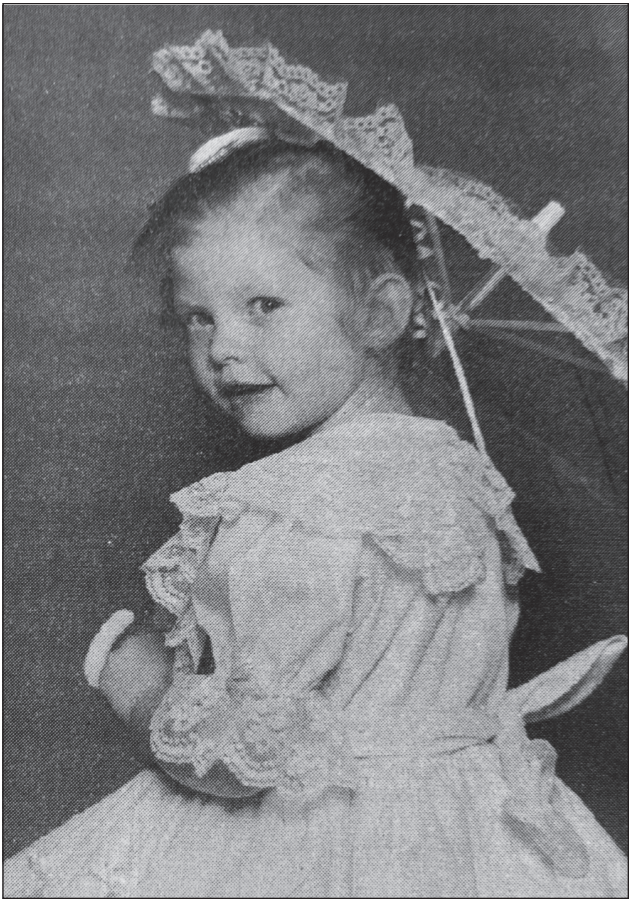
LOOKING BACK



Lisa Fagan looked for an inside pass while playing Page. She scored 8 points in this game. (from The Lewisburg Tribune, Jan. 21, 1993.)



Kristin George was selected as the sophomore attendant in Lipscomb University homecoming. (from The Lewisburg Tribune, Jan. 21, 1993.)



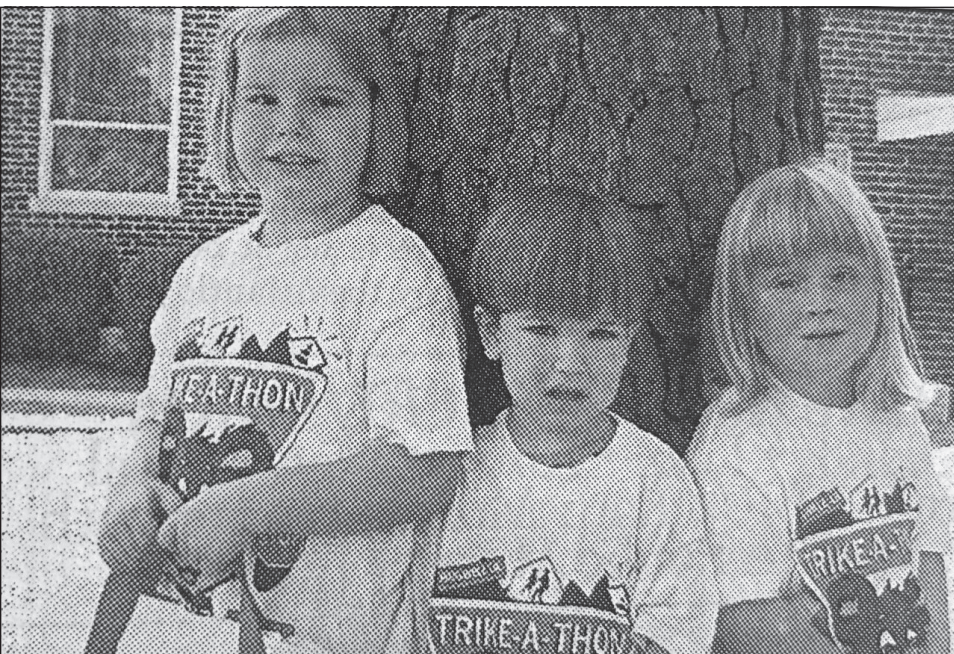
Chandra Lee Beatty was pictured in "Small World" in the Lewisburg Tribune on Feb. 18, 1993.)



Samantha Holbert was featured in "Small World" on May 6, 1993.



Phil George, Rotary Membership Chair, presented Goats, Music & More Board of Directors, Edmund Roberts and Jeff Haislip and Chairman of Goats, Music & More, Jack Cathey, a donation in the amount of \$3000 on October 22, 2022.



Methodist Day Care raised money for St. Jude's Children's Hospital. The top three fundraisers were Madison Newberry, Logan Gillum, and Alyssa Amos. (from The Lewisburg Tribune, June 26, 2003.)

BAKE & CRAFT SALE

UNITED METHODIST WOMEN ANNUAL FUNDRAISER



NOVEMBER 12, 2022 • 8am - ????



CORNERVILLE UNITED METHODIST CHURCH
100 SOUTH MULBERRY STREET | CORNERVILLE, TN 37047
931-293-4678

AUCTION

Saturday, November 19th
10:00 AM



210 EVENINGSIDE DRIVE
CHAPEL HILL, TN

Beautiful Brick Home

Separate Guest Cottage and Large Corner Lot

Very nice brick home with 3 bedrooms, 2 baths, large den with fireplace, updated kitchen with glazed cabinets and granite countertops, dining room and sunroom. This home is improved with a 2 car attached carport, replacement windows, 4 year old roof and CHA. This property also features a nice guest cottage with 1 bedroom, bath/utility, living room and kitchen, 22x22 aggregate patio with stone columns and solar lighting, and a 12x28 workshop/storage building. City water (2 taps), sewer and natural gas. Large corner lot with trees.



ATTENTION REALTORS: 1% BROKER REFERRAL

Real Estate agents must register 48 hours in advance and attend auction. No exceptions.

AUCTIONEER: REX BICKNELL 931-580-0116 Lic #1970



DIRECTIONS: From Hwy. 31 in Chapel Hill, turn on SE Forrest Lane, take first left on Eveningside, auction on the left at the corner of Morningside Drive. **TERMS:** 10% down day of sale, balance due on or before Dec. 31st, 2022. **TAXES:** Paid by Seller **POSSESSION:** With Deed
SPECIAL NOTE: Homes built prior to 1978 are subject to have lead-base paint. In accordance with federal law, all potential buyers will be allowed 10 days prior to sale to have the home inspected at their expense.

ALL ANNOUNCEMENTS MADE DAY OF SALE TAKE PRECEDENCE OVER PREVIOUS ADVERTISING. ALL INFORMATION DEEMED RELIABLE BUT NOT GUARANTEED.



615-896-4600
TOLL FREE 1.877.465.4600 | FIRM 3984

www.parksauction.com