



RICHARD W. DIONNE, JR.

## First snow of 2024

Joe Faryniarz, 71, shovels his walk on Narragansett Avenue on Monday morning, following the snowstorm the previous day. Portsmouth was spared the worst of the storm; while some Rhode Island communities collected up to five inches by Sunday morning, the snow didn't really start coming down in these parts until later that afternoon.

# Nonprofit agencies swap places

*Looking Upwards takes over building that served as home for Visiting Nurses, which is moving to Middletown*

BY JIM MCGAW

jmcgaw@eastbaymediagroup.com

Looking Upwards and Visiting Nurse Home & Hospice (VNH&H) are swapping places.

VNH&H, a nonprofit home health agency with over 70 years serving Aquidneck Island, announced the sale last week of its 21,858-square-foot building at 1184 East Main Road.

The nursing agency, which first placed its Portsmouth headquarters on the market back in February 2023, is moving to 438 East Main Road in Middletown. Coincidental-



KIRBY PROPERTIES

Looking Upwards is the new owner of this building at 1184 East Main Road which served for years as the headquarters for The Visiting Nurse Home & Hospice. Originally built for an electronics company, the property includes two parking lots and a large lawn with East Main Road frontage.

## Big local issues on the table this month

*SouthCoast Wind pact, future trash options, and Old Mill Lane subjects of upcoming meetings*

BY JIM MCGAW

jmcgaw@eastbaymediagroup.com

Monday's Town Council meeting flew by in 18 minutes, but that certainly won't be the case for its next two gatherings, both of which will be held in the Portsmouth High School auditorium due to an anticipated large turnout of residents.

At 7 p.m. on Tuesday, Jan. 16, council will hold a public hearing to consider a host community agreement between the Town of Portsmouth and SouthCoast Wind Energy LLC, which wants to run electric cables through a section of town to power a large off-shore wind turbine development.

At 6 p.m. on Monday, Jan. 22, the council will discuss and take action on the town's request for proposals (RFP) regarding its future waste disposal options, which could possibly include a town-wide curbside pickup program.

And although it's not being hosted by the Town Council, a public hearing scheduled for Wednesday, Jan. 24 by the R.I. Energy Facility Siting Board (EFSB) tackles yet another contentious local topic: the proposed permanent installation of Narragansett Electric Company's liquefied natural gas (LNG) vaporization facility on Old Mill Lane. That hearing begins at 6 p.m. and is also at PHS.

### Host community agreement

SouthCoast Wind (formerly Mayflower Wind) proposes to construct an offshore wind energy generating facility in federal waters approximately 30 miles south of Martha's Vineyard and 23 miles south of Nantucket within a federal lease area.

The plan calls for connecting that facility via export cables through federal and state waters and eventually to an electrical substation at Brayton Point in Somerset in order to connect to the regional electric grid. To do that, the developers says they would need to run transmission cables up the Sakonnet River, beneath Island Park Beach, up Boyds Lane and Anthony Road, under the Montaup Country Club before reentering waters in Mt. Hope Bay and making final landfall in Somerset.

The proposal has generated considerable opposition from many residents who claim running transmission cables up the Sakonnet River will do irreparable harm to marine life, and in extension recreational and commercial fishing. Some also say offshore wind is not a viable solution to climate change, there are more suitable routes for the cables than up the river and over Portsmouth, the project will

# Clean Ocean Access dissolves after 10 years

High turnover, staff issues cited

BY JIM MCGAW

jmcgaw@eastbaymediagroup.com



JULIE FURTADO

Hugh Fanning hauls a large, rusted car part toward the trash collection pile during a Clean Ocean Access (COA) beach cleanup at Gull Cove in Portsmouth back in February 2019. According to COA, the organization's cleanups — nearly 2,800 of them — removed more than 160,000 pounds of debris from local shorelines.

last 10 years serving and educating the community, and thanked all the "ocean-loving" community of dedicated volunteers, interns and donors, without whom COA wouldn't have been able to do the work it's accomplished.

"I am deeply appreciative of every person that has made the work COA does possible over the years, from our founder to each employee, volunteer, sponsor, board member and beyond," she said. "This was a difficult decision but ultimately one that was necessary to prevent any compromise to our ability to uphold our mission. The causes we supported still remain near and dear to me and many others and I personally plan to find ways to continue that work. I want to say thank you to the entire community and to anyone and everyone who has been a part of this journey."

Bielinski said she's been having conversations with several of COA's partner organizations or those that are similarly aligned.

"I do believe much of COA's mission will continue through other means, which is the best we can wish for at this time," she said.

Clean Ocean Access (COA), one of strongest environmental advocates for the local area and known by many for its countless number of volunteer-led shoreline cleanups, has made the difficult decision to dissolve after 10 years.

The nonprofit with the vision of "A Clean, Healthy Ocean that is Accessible to All" also monitored access points and water quality, implemented composting strategies for residents of Greater Newport, in school lunchrooms, at community events and inspired the community as a whole through extensive education.

Tricia Bielinski, a COA board member, cited the organization's high turnover rate and limited staff as the primary reason for the decision.

"Our director of the board resigned suddenly without notice last summer along with another board member, and it was small to begin with. On a staff level, a simi-

lar theme. Ultimately, we just don't have the people infrastructure to

keep it going," Bielinski said in an e-mail to The Portsmouth Times

on Tuesday.

She said COA has enjoyed the

## TOM'S MARKET

Fresh. Local. Exceptional.

**Prices in effect**  
**Jan. 10-16**

**COVENTRY**  
821 Tiogue Avenue • 401-826-0050  
Mon.-Sat. 8am-7pm, Sun. 8am-6pm

**TIVERTON**  
492 Main Road • 401-816-0862  
Mon.-Sat. 8am-8pm, Sun. 8am-7pm

**WARREN**  
137 Child Street • 401-289-2852  
Mon.-Sat. 8am-8pm, Sun. 8am-7pm

	MEATS	GROCERIES	PREPARED FOODS	SEAFOOD
<div style="background-color: #c00000; color: white; padding: 5px; text-align: center; font-weight: bold; font-size: small;">                     WOW! BEST PRICE IN ALMOST 2 YEARS                 </div> <div style="text-align: center; margin-top: 10px;"> <p style="font-weight: bold; font-size: x-large; color: white;">TOM'S FAMOUS GROUND CHUCK</p> <p style="font-size: 2em; color: white; font-weight: bold;">\$3.99</p> <p style="font-size: small;">lb.</p> </div> <div style="margin-top: 10px;"> <p>A Tom's Favorite! T-Bone Steaks <b>\$9.95</b> lb.</p> </div>	<p><b>Boneless Center Cut Pork Chops</b> \$3.79 lb.</p> <p><b>Shadybrook 99% Lean Ground Turkey Breast</b> 1.3 lb. <b>\$7.99</b></p> <p><b>USDA Beef for Stew or Cube Steak</b> \$4.99 lb.</p> <p><b>US #1 Hatfield Sliced Bacon</b> \$4.99 lb.</p> <p><b>Thick and Meaty Country Style Ribs</b> \$2.49 lb.</p>	<p><b>Prince Pasta</b> All regularly priced \$1.99 varieties 4/\$5</p> <p><b>Classico Pasta Sauce</b> 15-24 oz. 2/\$7</p> <p><b>Progresso Traditional Soups</b> Excludes vegetable classics 2/\$4</p> <p><b>Poland Spring Water</b> 24 pack 3/\$13</p> <p><b>Kellogg's Raisin Bran Cereal</b> 14-16.6 oz. \$3.99</p> <p><b>Ben's Ready Rice Pouches</b> All varieties 2/\$5</p> <p><b>Starkist Tuna Pouches</b> 2.6 oz. 4/\$5</p>	<div style="text-align: center; margin-bottom: 10px;"> <p style="font-weight: bold; font-size: x-large; color: white;">Tom's American Chop Suey</p> <p style="font-size: 2em; color: white; font-weight: bold;">\$4.99</p> <p style="font-size: small;">lb.</p> </div> <p><b>Grab Your Tortilla Chicken Fajitas</b> ..... \$6.99 lb.</p> <p><b>Tom's Own Pasta and Bean Soup</b> 24 oz. .... \$6.99</p> <p><b>Our Famous Fish &amp; Chips</b>..... \$9.95 lb.</p> <p><b>Grilled Tuscan Style Chicken Thighs</b>..... \$4.99 lb.</p>	<div style="text-align: center; margin-bottom: 10px;"> <p style="font-weight: bold; font-size: x-large; color: white;">Fresh Narragansett Bay Littlenecks</p> <p style="font-size: 2em; color: white; font-weight: bold;">\$6.99</p> <p style="font-size: small;">doz.</p> </div> <p><b>Wild Caught North Pacific Scrod</b> \$9.95 lb.</p> <p><b>Fresh Yellowtail Sole</b> \$10.99 lb.</p> <p><b>Wow! 2lb. Bag U-15 Sea Scallops</b> \$26.98</p>
<p style="text-align: center; color: #008000; font-weight: bold; font-size: 1.2em;">BAKERY</p> <p><b>MUFFIN OF THE WEEK</b> Chocolate Chip 4 pk. \$5.99</p> <p><b>Fresh Baked Blueberry Pie</b> 27 oz. \$6.99</p> <p><b>Grab 'n Go Mini Donuts</b> 12 pack \$4.99</p> <div style="text-align: center; margin-top: 10px;"> <p style="font-weight: bold; font-size: x-large; color: white;">DELICIOUS BOSTON CREME PIE</p> <p style="font-size: 2em; color: white; font-weight: bold;">\$10.99</p> <p style="font-size: small;">27 oz.</p> </div>	<p style="text-align: center; color: #008000; font-weight: bold; font-size: 1.2em;">DELI</p> <div style="text-align: center; margin-bottom: 10px;"> <p style="font-weight: bold; font-size: x-large; color: white;">BOAR'S HEAD OVEN GOLD TURKEY</p> <p style="font-size: 2em; color: white; font-weight: bold;">\$9.95</p> <p style="font-size: small;">lb.</p> </div> <p><b>Rare &amp; Juicy Roast Beef</b> ..... \$9.95 lb.</p> <p><b>Russer Smoked Virginia Ham</b>..... \$4.99 lb.</p> <p><b>Deutschmacher Beef Bologna</b>..... \$5.99 lb.</p> <p><b>Land O Lakes Italian Blend Cheese</b> ..... \$6.99 lb.</p>	<p style="text-align: center; color: #c00000; font-weight: bold; font-size: 1.2em;">DAIRY/FROZEN</p> <p><b>Cabot Cheese Bars</b> 6-8 oz. 2/\$5</p> <p><b>Tropicana Orange Juice</b> 52 oz. \$3.99</p> <p><b>Cabot Butter Quarters</b> 16 oz. \$4.99</p> <p><b>Yoplait Yogurt</b> 4-6 oz. 10/\$7</p> <p><b>Daisy Sour Cream</b> 8 oz. 2/\$3</p> <p><b>Eggo Waffles or Pancakes</b> 2/\$7</p> <p><b>Hood Ice Cream</b> 48 oz. \$3.99</p>	<p style="text-align: center; color: #c00000; font-weight: bold; font-size: 1.2em;">FRESH PRODUCE</p> <p><b>SAVE \$1.00!</b> Red Bliss or Yukon Gold Potatoes \$3.99 ea.</p> <p><b>Fresh Cut Pineapples</b> \$3.99 lb.</p> <p><b>Yellow Cooking Onions</b> 2 lb. bag 2/\$3</p> <p><b>Extra Fancy Royal Gala or Granny Smith Apples</b> \$1.99 lb.</p> <p><b>On the Vine Cluster Tomatoes</b> \$2.49 lb.</p> <div style="text-align: center; margin-top: 10px;"> <p style="font-weight: bold; font-size: x-large; color: white;">WOW! SAVE \$1.00 LB. FRESH CUT BROCCOLI CROWNS</p> <p style="font-size: 2em; color: white; font-weight: bold;">\$1.49</p> <p style="font-size: small;">lb.</p> </div> <p><b>Extra Large Lemons &amp; Limes</b> .99 ea.</p>	

MORE GREAT SPECIALS THROUGHOUT THE STORE - COME IN AND SEE WHAT WE HAVE TO OFFER!

Due to manufacturer's supply issues, some items may be in limited supply. Sorry, No Rain Checks. ★ Not Responsible for Typographic Errors. Some items may not be available in all locations.

Photos of events, people, etc. available for purchase at [eastbayri.com](http://eastbayri.com)

# Patriots' four-game win streak broken by Eagles

*Olivia Durant leads Patriots with 15 points*

(10), Gyselle Mairs (9), and Stella Orr (3); and senior Ava Moore (9).

The Patriots had won four straight before traveling to Barrington. They're now 4-2 in Division I, with wins over East Providence, Juanita Sanchez Complex, Cranston West, and St. Raphael Academy. The team lost in the division opener against North Kingstown, 48-42.

The Patriots were scheduled to play Rogers on the road on Tuesday, Jan. 9, before hosting Classical at the PHS field house at 6 p.m. on Thursday, Jan. 11.

Other upcoming games:  
 ■ Monday, Jan. 15, at 6 p.m.: hosting St. Mary Academy Bay View

■ Wednesday, Jan. 17, at 6:30 p.m.: at Ponaganset

■ Friday, Jan. 19, at 6 p.m.: hosting South Kingstown



PHOTOS BY JULIE FURTADO

Portsmouth High's Annie Hurd (left) and Ava Moore vie for the rebound during the second half of last Friday's game against Barrington on the road.

A modest win streak by the Portsmouth High School girls' varsity basketball team was interrupted last week by Barrington, which came from behind for a 64-57 home win.

Portsmouth led at halftime, 32-25, but Barrington's offense kicked into high gear in the second half when the Eagles outscored the Patriots by six points in the third quarter and eight points in the fourth.

Senior Olivia Durant led Portsmouth on offense with 15 points — all from behind the 3-point line. She also grabbed three rebounds, recorded four steals and blocked a shot.

Also contributing on offense were freshmen Annie Hurd (11 points), Deirdre Tullson



The Patriots' Olivia Durant squares to make a shot while competing against Barrington. She led Portsmouth with 15 points.



Ava Moore is pressured by a Barrington defender while going in for a layup.



**ABOVE:** Gyselle Mairs drives past a Barrington defender during the first half of Friday's game. **LEFT:** Stella Orr pulls down a defensive rebound late in the second half of Friday's game.

## PORTSMOUTH TIMES

1 Bradford St, Bristol  
 401-253-6000 • 401-253-6055 (fax)  
 Mailing address: P.O. Box 90, Bristol, RI 02809

*Published continuously since 2013*

A publication of East Bay Media Group

POSTMASTER send address changes to:  
 Portsmouth Times, 1 Bradford St., Bristol, R.I. 02809

© 2024 East Bay Media Group

### How to reach us

**Local News:**

Jim McGaw - 401-424-9138, jmcgaw@eastbaymediagroup.com

**Community News Events:**

Lynda Rego - 401-253-6000, ext. 107, lrego@eastbaymediagroup.com

**Business Advertising:**

Sharon Paradis - 401-424-9128, sparadis@eastbaymediagroup.com

**Classified Advertising:**

Lee Friedland - 401-424-9129, lfriedland@eastbaymediagroup.com

**Subscriber Services:**

Jock Hayes - 401-424-9133, jhayes@eastbaymediagroup.com

### Index

Around Town.....	9
Opinion.....	6
Police Report.....	7
Religion News.....	11
Seniors.....	11

News deadline ..... 9 a.m. Tuesday  
 Advertising deadline ..... Noon Monday

# BUILDING: Looking Upwards closes on 1184 East Main Road building

From Page 1

ly, that building is currently occupied by a fellow non-profit, Looking Upwards, which bought VNH&H's Portsmouth building in late December.

Founded in 1978, Looking Upwards is a private, nonprofit agency that offers a wide array of services to adults with intellectual/developmental disabilities and children and families with diverse needs.

Carrie Miranda, Looking Upwards' executive director, said the agency closed on 1184 East Main Road on Dec. 20.

"We will be leaving our longtime home of over 25 years at 438 East Main Road (Middletown). When the (VNH&H) property went on the market last spring, we were already assessing our need for more space due to the significant growth we have experienced over time and once we saw the potential of the space, we knew this was a rare opportunity we had to pursue."

Miranda said Looking Upwards' administrative offices will be relocating to the Portsmouth building and the nonprofit also plans to expand clinical services, social skills groups for children and other services.

"We are looking forward to expanding opportunities to work within our community now that we will have more space and flexibility for programs," she said.

Initially supporting adults with disabilities, the agency's services have expanded to serve individuals and families facing diverse challenges. Annually, the agency provides services for 1,200 individuals and families throughout Rhode Island.

Looking Upwards' Children's Services serve children prenatal through young adult, supporting families to help their child to get the best start in life and to thrive. Services for adults living with intellectual/developmental disabilities support each person to live the life they choose fully, Miranda said. "Throughout all of our services, we listen and support each

person to strive for and enjoy a life full of possibilities," she said.

## Nurses need less space

Jennifer Fairbank, CEO of VNH&H, said the nursing agency is grateful for the vision of those who came before.

"Because of generous benefactors, the agency was able to acquire our building back in 1995. At the time, we needed 22,000 square feet to store medical supplies and paper records. Today we need half of that space," Fairbank said.

Visiting Nurse expects to be done with renovations to its new space in Middletown by late January. In the meantime, staff members are working out of their North Kingstown office, at home and other temporary spaces.

Fairbank added, "Measures have been put in place to ensure no disruption of service to patients and referral partners. We look forward to serving our community for years to come."

Back in July of 2023, VNH&H Board Chair, Mark Hough, said selling the building was part of the agency's comprehensive strategic plan after the VNH&H Board of Directors voted to sell their building and seek more appropriately sized office space on Aquidneck Island. He added that "to continue our legacy of serving all who need us, we are focusing on strategic growth within a challenging healthcare environment."

In 2023 the agency made over 82,326 home health visits to 4085 individuals in our community.

Founded in Newport in 1950, Visiting Nurse Home & Hospice has grown from a small grassroots home care agency to a regional home care organization employing over 200 people. It also has branch offices in North Kingstown and as well as a supply depot in Swansea.

The agency provides home care nursing, rehabilitation, hospice and palliative care, maternal child health, social work, and community clinics to over 600 patients daily.



## PROGRAMS ACADEMY FOR...

- Digital Media Production
- Visual Arts & Design
- Engineering Design
- Education, Child Development, and Human Services
- Bioscience
- Music Production

**PHS CTE**  
*Open House*  
THURSDAY, JANUARY 18TH, 2024  
6:00 - 7:30 PM

## CONTACT US:

**Paige Kirwin-Clair**  
Director of College and Career Readiness  
kirwinclairp@portsmouthschoolsri.org

**Diane Creese**  
CTE Coordinator  
creesed@portsmouthschoolsri.org  
401-683-2124 (ext. 2403)

## DURING THIS EVENT YOU WILL...

- Receive an overview of our six Career and Technical Education programs
- Optional tour of our building
- Meet our teachers and students

"No hidden fees... just great service and low prices!"



**Travers**

NEW ENGLAND ENERGY CORP.

401-683-0370 Portsmouth/Middletown

401-849-1505 Newport/Jamestown

401-624-7548 Tiverton/Little Compton

www.newenglandenergyoil.com  
24/7 Emergency Service • Financing Available

- Home Heating Oil
- Diesel • Kerosene
- New Heating Systems
- Repairs • Installs
- Boiler Replacements
- Full A/C Services & Installations
- Oil Tank Replacements

Same Day Service



## Local news, Local impact



"More than 10 years and counting! The numbers don't lie; Evergreen always gets results with the *East Providence Post!*"

- Julie Pimental-Fox, Evergreen's Senior Director of Business Development, 2023 East Providence Most Remarkable Woman Honoree

See how local advertising can boost your business, too!

Call our Sales Team today  
401-253-6000 • eastbayri.com



BARRINGTON TIMES • BRISTOL PHOENIX • EAST PROVIDENCE POST  
PORTSMOUTH TIMES • SAKONNET TIMES • WARREN TIMES-GAZETTE  
WESTPORT SHORELINES • EAST BAY LIFE • EAST BAY CLASSIFIEDS  
EASTBAYRI.COM

**BROWN ADVISORY GROUP, LLC**  
BUILDING PORTFOLIOS ... BRIDGING DREAMS



JEFFREY J. BROWN, CFP®

Fiduciary-level Financial Advice & Consultations

Call: 401.433.1100

1445 Wampanoag Trail • East Providence, RI  
www.brownavisors.com • Jeff@brownavisors.com

Investment Advisory Services provided through Brown Advisory Group, LLC. Brown Advisory Group, LLC & Vanderbilt Securities, LLC are separate & unaffiliated entities. Securities offered through Vanderbilt Securities, LLC. Member: FINRA, SIPC Registered with MSRB. Clearing agent: Fidelity Clearing & Custody Solutions. Neither Vanderbilt Financial Group, nor any of its associates, provide tax or legal advice. Please speak with your tax or legal advisor for such guidance.

**Brougham Motors Inc. COLLISION CENTER**

AUTO BODY EXPERTS SINCE 1968  
LICENSED INSURANCE REFERRAL SHOP

**FAMILY OWNED & OPERATED**

387 Bedford Street  
Fall River, MA 02720

**(508) 678-2276**

www.broughammotorsinc.com



# MEETINGS: Council considers host community wind agreement Tuesday

From Page 1

benefit Massachusetts and not Rhode Island, and more.

Their charges have been sharply disputed by many scientists and proponents of renewable energy, who say that opponents have greatly exaggerated the negative impacts of offshore wind and have made logical fallacies in their arguments.

The plan is currently under review by EFSB, which will ultimately decide if it goes forward; the Town Council, along with many other groups, can submit only an advisory opinion on the project to EFSB.

On Tuesday, the council will consider entering into a host community agreement between the Town of Portsmouth and SouthCoast Wind. Such an agreement would provide annual revenue to the town once the project has been constructed. Those payments, which can be used at the discretion of the town, may support locally driven initiatives such as coastal resiliency, broadband, energy efficiency, and other town-determined priorities, according to SouthCoast.

According to the agenda language for the hearing, the proposed host community agreement "provides for certain payments to be made by SouthCoast to the Town which includes annual payments of which a fixed portion, in the amount of \$125,000 for each phase for the first 10 years of the project, would be allocated and deemed to be a payment in lieu of taxes and a stabilized amount of taxes to be paid on account of SouthCoast's underground onshore export cables to be located in the



SOUTHCOAST WIND

Map shows proposed route of SouthCoast Wind's transmission cables through Portsmouth. (Mayflower Wind is the company's former name.)

Town."

According to a draft of the host community agreement proposed for Portsmouth, the town would receive a total investment of \$23.22 million over 33 years while receiving assurances that local construction impacts would be "minimized."

The town and SouthCoast would work "cooperatively on finalizing the route(s) for the onshore export cables, including minor modifications to the proposed routes that have been submitted to the siting boards," according to the proposed agreement.

Also under the pact, the town would agree "not oppose the project and/or onshore export cables before the (EFSB)," the draft agreement states.

The full draft agreement can be read on the

town's website at [www.portsmouthri.gov](http://www.portsmouthri.gov).

## More trash talk

On Jan. 22, the council will finally consider a change to a request for proposals (RFP) regarding its waste disposal program.

After more than three hours of contentious debate on Oct. 23, 2023, the council voted unanimously to advertise two separate RFPs:

- One is to develop a town-wide curbside collection program, which would provide for bulky waste to be picked up curbside for an additional cost to each resident. The town would seek just one vendor for the job in order to reduce costs for enrolled residents.
- The other is to prepare an RFP for curbside collection, but to keep the transfer station open for bulky waste and diversion materials

two days a week.

Hundreds of transfer station users, however, signed a petition demanding no changes to the current transfer station operation, and council member David Gleason has requested an addendum to the RFP to include an option for bids to "keep the transfer station open, in its entirety, as currently operating. The RFP shall include bids with use of town trash bags and without."

The matter was originally on the agenda for the council's regular meeting on Nov. 27 at Town Hall, but had to be moved to a special assembly at PHS in early December to accommodate the large number of interested residents. However, since discussion on the East Main Road roundabout went on for so long, the council tabled the matter until Jan. 22.

## Old Mill Lane

Another controversial issue is the proposed permanent installation of the LNG storage/peak shaving facility on Old Mill Lane in the middle of a residential neighborhood.

For several years the site has been used only as a seasonal option to meet peak demand during the colder months. However in April 2022, the company filed a supplemental application with EFSB, identifying the

Old Mill Lane facility as its preferred long-term solution and to seek a full license

On Jan. 24, the EFSB will be accepting public comment on the proposal to permanently install equipment, with a potential to expand on the site.

The Old Mill Lane applications can be found at [ripuc.ri.gov](http://ripuc.ri.gov).



James A. Diossa  
Rhode Island General Treasurer

## CollegeBound Saver

Discover the smart way to save for the future

[CollegeBoundSaver.com](http://CollegeBoundSaver.com)

CollegeBound Saver is a program of the office of Rhode Island General Treasurer, James A. Diossa.



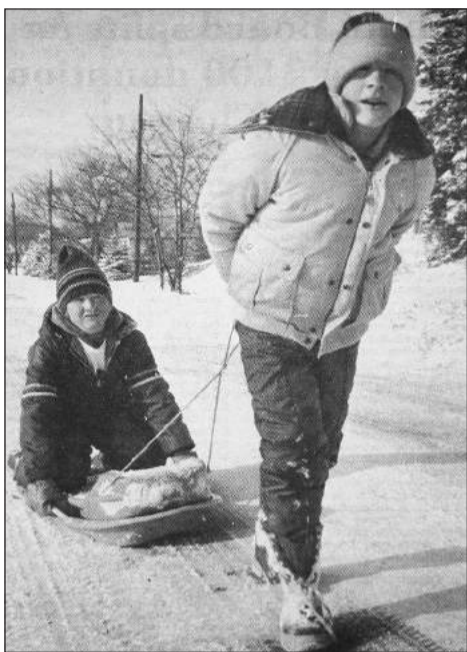
## NOTICE OF AVAILABILITY Action Memorandum, Soil Stockpile Removal Site 13 – Tank Farm 5 (Operable Unit 2) Naval Station Newport, Middletown Rhode Island

The United States Navy is notifying the public and stakeholders of the initiation of a Time Critical Removal Action (TCRA) for the removal of soil stockpiles at Naval Station (NAVSTA) Newport Environmental Restoration Program (ERP) Site 13 - Tank Farm 5, which is located in Middletown, Rhode Island. The TCRA consists of the removal of approximately 35,000 cubic yards of soil in order to mitigate potential risk to current and future site workers and others from exposure to contaminants from stockpiled soil and asbestos-containing material (ACM) debris. The TCRA will include vegetation removal, soil pre-characterization sampling, soil removal and off-site disposal.

The Final Action Memorandum and Removal Action Work Plan for the ERP Site 13 – Tank Farm 5 at Naval Station Newport, Middletown, Rhode Island document the planned TCRA. Both documents are available at the following Information Repository web site which the Navy maintains for the Restoration Advisory Board (RAB) and the Administrative Record: <https://www.navfac.navy.mil/Business-Lines/Environmental/Products-and-Services/Environmental-Restoration/Mid-Atlantic/Newport-NS/Community-Outreach/>

Any questions can be submitted via e-mail, fax, or mail to the following.  
Environmental Office  
1 Simonpietri Drive  
Naval Station Newport  
Newport, RI 02841-1512  
Phone: 401-841-7671  
e-mail: [david.dorocz@navy.mil](mailto:david.dorocz@navy.mil)

# Opinion



## Can I give you a tow?

During the first school snow day of 1984, Common Fence Point resident Donald Whitmarsh got a ride in a sled from his friend, Stephen Barker. This photo appeared in the Jan. 12, 1984 issue of The Sakonnet Times.



## Meet the new captains

Portsmouth High School seniors chosen to be winter sports captains 40 years ago were (from left) Gina Hall and Meredith MacDonald, girls' basketball; George Easley and Tim Kehoe, boys' basketball; Jayne Poirier and Janice Byers, cheerleaders; and Liz Hanlon, gymnastics. At far right is Frank Alfano, athletic director. This photo appeared in the Jan. 12, 1984 issue of The Sakonnet Times.

## On this day in Portsmouth history ...

- Jan. 14, 1918: Town Council asks state representatives to approve National Prohibition Amendment.
- Jan. 16, 1920: National Prohibition goes into effect.
- Jan. 16, 1910: Plans approved to erect dam at Lawton's Valley.

Thanks to Town Historian James Garman for compiling dates.



*"I have a dream that one day this nation will rise up and live out the true meaning of its creed: We hold these truths to be self-evident, that all men are created equal."*

**MARTIN LUTHER KING, JR.**  
January 15, 1929 – April 4, 1968

## LETTERS TO THE EDITOR

### Gen. Flynn deserves R.I. Hall of Fame induction

#### To the editor:

I am responding to David Schoorens's letter ("Induction of Flynn to R.I. Heritage Hall of Fame a travesty") in your Dec. 28, 2023 edition.

Mr. Schoorens knowingly or unknowingly leaves out the key facts regarding Gen. Flynn's unlawful prosecution.

1. On May 7, 2020, the DOJ (U.S. Department of Justice) moved to dismiss the criminal information that had been filed against Gen. Flynn on Nov. 30, 2017, charging him with one count of willfully and knowingly making false, fictitious, and fraudulent statements. In this motion the DOJ admitted that the

interview conducted was not conducted with a legitimate investigative basis and therefore does not believe his statements were material even if untrue.

2. This is an admission from the DOJ that they never should have brought the prosecution against Gen. Flynn.

3. Therefore, agents and agencies of the U.S. government (DOJ, FBI, and SCO), utilized their official positions to initiate a baseless investigation, keep the investigation open, undertake illegitimate investigative steps, and bring unjustified criminal charges to maliciously prosecute Gen. Flynn.

All the above are from court filings from the DOJ. It is all factual and facts are a stubborn thing.

The U.S. government illegally persecuted Gen. Flynn simply because he served a president that they did not like. The damages both financially and to his impeccable reputation were devastating.

Gen. Flynn served this country so people like Mr. Schoorens could enjoy our many freedoms, including free speech.

We should all be grateful for his service.

**Thomas Berg**  
16 Pages Way

### Town deal with SouthCoast Wind deserves support

#### To the editor:

Next Tuesday, Jan. 16, at Portsmouth High School, there will be a special Town Council meeting to vote on a proposed agreement with SouthCoast Wind to run an electric line along Boyd's Lane. The town

would receive \$23 million over 33 years and commitments to minimize construction impacts on Island Park.

I think it's a good deal, and I plan to go to the meeting to say so. If you also think supporting renewable

energy and green economy jobs is a good thing, please take the time to attend — or at least send an email to the council — so that your point of view is represented.

**John McDaid**  
65 Gormley Ave.

### Are we asking right questions about massive wind farms?

#### To the editor:

There are generations of commercial fishermen in my family. I have more than 25 years of professional marine experience working as a crew member and captain on small passenger vessels, and I remain an active boater, diver and fisherman on Rhode Island's waters.

Construction is underway to build thousands of huge wind turbines from New Jersey to Maine. From an average Joe's perspective, this process feels extremely rushed, and

there are dozens of unanswered questions. Getting legitimate answers is proving to be difficult — at times it feels like there is no information, and at others it seems like we are drowning in thousand-page reports full of jargon. I think every Rhode Islander should keep in mind that the fundamental priority of every offshore wind developer is profit. Whether a huge corporation like Orsted is developing renewable or fossil fuel energy, their primary obligations are not to Rhode Islanders, the fishing commu-

nity, or the environment. They answer to shareholders.

Here are a few questions that should be considered.

1. Substations: The turbines produce DC power, which must be converted to AC. This is done with liquid-cooled transformers. This means seawater is pumped through the substations, heated, bleached, and returned to the ocean. Did we not learn from Brayton Point?

See **FACING PAGE**

## PORTSMOUTH TIMES

Established in 2013

Matthew Hayes, Publisher

Jim McGaw, Editor

R. S. Bosworth Jr., Publisher Emeritus

### Letters policy

The Portsmouth Times encourages all citizens to comment publicly on the events and times in which we live. We will print any letter sent to us, adhering to guidelines for taste, accuracy, fairness and public interest. Letters must be signed by the author and must include telephone number and street address. Letters are limited to 500 words. Direct letters to: Portsmouth Times, P.O. Box 90, Bristol, R.I. 02809. Letters may also be sent to [jmcgaw@eastbaymediagroup.com](mailto:jmcgaw@eastbaymediagroup.com)

This newspaper does not assume responsibility for errors in advertisements printed herein, but will print without charge that part of any advertisement in which an error occurs.

# Public schools all get 4-star ratings from state

*Improvements seen at Melville and middle school*

The town's four public schools all received a rating of four stars out of a possible five under the Rhode Island Department of Education's (RIDE) latest school accountability report released last Friday.

RIDE's new star rating system, which debuted last year, is based on test scores, attendance, English language proficiency, student success, suspension rates, college and career readiness and more.

The report noted improvements at Melville Elementary School and Portsmouth Middle School, both of which received three-star ratings for the 2022-21 academic year. For 2022-23, each school received four stars. Howard Hathaway School and Portsmouth High School also received four stars, as they did last year.

"Only 50 schools throughout R.I. (16 per-

cent) received a 4-star rating or higher in RIDE's recently released 2023 accountability data," the Portsmouth School Department stated in a Facebook post. "Four of those schools make up the (Portsmouth school district). Congratulations to the students, staff, and families of Hathaway, Melville, PMS, and PHS!"

Twenty-three schools in Rhode Island received five-star ratings, including five in both the Barrington and East Greenwich districts.

All five schools in Tiverton received three-star ratings, while Middletown's schools got either two or three stars. Newport's middle school received the dreaded one-star rating, while its elementary and high schools each got two stars.

Wilbur and McMahon Schools in Little Compton received the coveted five-star review. Bristol-Warren had one five-star school (Rockwell), while the others received either two or three.

## LETTER: Are we asking right questions?

From **FACING PAGE**

2. Pile driving: Offshore wind construction will require years of driving massive pilings into the seafloor for each turbine. It's like poking the side of a fish tank a thousand times a day. Is this in any way a factor in the spike in whale and dolphin fatalities? What effect will it have on other fish stocks?

3. Fishing grounds: Some of the turbines are being installed in some of the most fertile fishing grounds in Rhode Island, including the renowned fisheries at Coxes Ledge. Must we allow offshore wind to disrupt access to the grounds that are vital to fishermen? Is there no way to avoid placing turbines in such important fishing grounds?

4. Independent impact studies: Developers have filed impact studies completed by researchers in their employ. To ensure unbiased factual studies, shouldn't the entities completing the studies be independent?

5. What will happen when turbines fail? One fact that cannot be disputed is that all machines fail, especially those that are soaked in salt water. Whether physically or economically, some of the turbines will fail. As the captain of a small passenger vessel, I once ran a trip in the Gulf of Mexico. We passed through an area with what looked like hundreds of oil rigs. It resembled a small city. Unfortunately there were dozens of abandoned rigs rotting into the sea. Apparently, it was cheaper for the oil companies to claim bankruptcy, reopen under a new name and move on than it was to responsibly decommission old rigs. Is this a possibility off our coast with the thousands of turbines and pilings?

Even if you don't know a commercial fisherman, you probably know someone who makes a living servicing the industry. They need our support.

**Joe Silva**  
Warren

### Get news delivered to your email

Stay on top of what's happening in Portsmouth by signing up for our weekly email newsletter. Just scan the QR code here, or visit <https://bit.ly/3CqRR1i>.

Don't forget to visit The Portsmouth Times' Facebook page, our website at [eastbayri.com](http://eastbayri.com), or Twitter at [twitter.com/eastbayri](https://twitter.com/eastbayri).



## POLICE REPORT

# Police charge woman with B&E, disorderly conduct

A 28-year-old Middletown woman was arrested last week after she allegedly broke into a home in Portsmouth.

Shortly before 8 p.m. on Friday, Jan. 5, officers responded to 394 West Main Road after receiving a call about someone who had entered the residence, police said.

When they arrived, officers made contact with **Kathleen Rose Wagner**, of 24 Stockton Drive, Middletown, who was "uncooperative and exhibited multiple signs of alcohol intoxication," according to the police report.

After speaking with the victim and Wagner, officers determined she was inside the home before their arrival, police said.

Wagner was charged with unlawful breaking and entering of a dwelling house, her first offense, as well as disorderly conduct. She was secured in one of the female cells at the police station to await her arraignment, police said.

*Also in this week's police report:*

### Saturday, Jan. 6

**Raychelle Alisha Ann Patton**, 18, of 53 William Barton Drive, Tiverton, was charged with driving under the influence, first offense, after being stopped in the area of East Main Road at Clements' Marketplace around 12:25 a.m. Patton was also cited for refusal to submit to a chemical test.

## RISLA College Planning Center

Apply For Financial Aid

# FREE HELP WITH FAFSA

Schedule Your Free Appointment



SIGN-UP TODAY!  
[collegeplanningcenter.org](http://collegeplanningcenter.org)

## SELLING WITH RYAN

Your Goals.  
My Passion.  
Let's Talk.

**Ryan M. Fonseca**  
Managing Broker



CENTURY 21 Topsail Realty

Cell: 401-489-0065  
[RFonseca@C21bristol.com](mailto:RFonseca@C21bristol.com)

## 7 Day/24 Hour Emergency Service

Free Estimates

Same Day Service



*Travers Plumbing & Heating, Inc.*

See Our Discounts At:

OVER 50 YEARS EXPERIENCE

No Job Too Big or Too Small

[www.traversplumbinginc.com](http://www.traversplumbinginc.com)

- Drain Cleaning • Video Pipe Inspection • Remodeling
- Pipe Thawing • High Velocity Water Jetting
- Renovations • Pipe Replacement Service
- New Construction • Water Heaters • Baseboard
- Boilers & Furnaces • Well Pumps
- Solar Hot Water Installations

REPAIRS • INSTALLATION • MAINTENANCE • RESIDENTIAL & COMMERCIAL



624-7548 • 683-0370 • 849-1505  
Tiverton/Little Compton Portsmouth/Middletown Newport/Jamestown

Locally Owned & Operated

**LEGAL NOTICE**

**TOWN OF PORTSMOUTH, RI**

**NOTICE OF PUBLIC HEARING**

**Proposed Payment in Lieu of Taxes / Tax Stabilization Agreement  
SouthCoast Wind Energy LLC**

Pursuant to R.I. Gen. Laws § 44-3-9.10, the Portsmouth Town Council will hold a public hearing to consider authorization of a payment in lieu of taxes (PILOT) / tax stabilization agreement between the Town of Portsmouth ("Town") and SouthCoast Wind Energy LLC ("SouthCoast"), as contained in a proposed Host Community Agreement between the Town and SouthCoast in connection with a proposed offshore wind energy project that is the subject of SouthCoast's application to the R.I. Energy Facility Siting Board ("EFSB") for a license to construct major energy facilities (Portsmouth, RI), EFSB Docket No. SB-2022-02.

Section VI of the proposed Host Community Agreement provides for certain payments to be made by SouthCoast to the Town which include Annual Payments of which a fixed portion in the amount of one hundred twenty five thousand dollars (\$125,000) for the first ten (10) years of the project shall be allocated and deemed to be a payment in lieu of taxes (PILOT) and a stabilized amount of taxes to be paid on account of SouthCoast's underground onshore export cables to be located in the Town.

A copy of the proposed Host Community Agreement is available at the Town Clerk's Office Monday – Wednesday from 8:30 a.m. – 4:30 p.m., Thursday from 8:30 a.m. – 6:30 p.m., and Friday from 8:30 a.m. – 2:30 p.m., and is also available online by accessing the following link:

<https://www.portsmouthri.gov/DocumentCenter/View/5683/Proposed-Host-Community-Agreement>

The public hearing will be held at 7:00 p.m. on Tuesday, January 16, 2024, at the Portsmouth High School auditorium located at 120 Education Lane, Portsmouth, RI 02871.

All persons interested in the above matter are requested to be present at the public hearing to be heard thereon.

The Portsmouth High School is handicapped accessible. Individuals requesting interpreter services for the hearing impaired must call the Town Clerk's Office at 401-683-2101 at least 72 hours in advance of the hearing.

Jennifer M. West, CMC, Town Clerk

**OBITUARY**

**Tiina M. Liiv**

Tiina M. Liiv, 86, of Middletown, R.I., passed away peacefully at home on Nov. 5, 2023. She was the wife of the late H. Henry "Hank" Liiv. Born in Tartu, Estonia, on Aug. 26, 1937, she was the daughter of the late Elmar and Mari (Müür) Ülper.



Tiina was forced to flee Estonia as a young child as Russian forces invaded Estonia near the end of World War II, and lived in a DP (displaced persons) camp in Augsburg, Germany, for several years before emigrating to the United States and settling in Seabrook, N.J.

Tiina attended the University of Michigan (Go Blue!) before moving to Philadelphia with her lifelong friend (and fellow state volleyball champ) Aili Labidas, where she worked as a social worker in the city. She met Hank at a dance at the Eesti Maja (Estonian House) in NYC and married him in 1961, when she began the work of raising a family. The family moved frequently to support Hank's career at General Electric, including several years spent in Angers, France.

In 1974, Hank left GE and he and Tiina settled in Middletown, R.I. Together, they founded International Manufacturing Services, Inc. (IMS), in Portsmouth, R.I., a thick film technology company that has grown into a global leader in the field and where Tiina served as vice president of finance for almost 40 years.

Tiina traveled extensively with Hank throughout their 51-year marriage, one of the highlights being their return to Estonia in 1991 in the early wake of the country's freedom from almost 50 years of illegal Russian occupation.

She treasured her strong, lifelong community of Estonian women friends with whom she remained connected throughout her life. She read widely and was fascinated by etymology and grammatical rules, circling mistakes in the newspaper with glee. Tiina was a chef

and gourmand and was especially adept at Estonian cuisine. She was famous for her lihapiroukad, kapsa leib, seljanka, hakkliha kaste, rabarberikook, and piparkoogid. Until the last few years of her life, she and her family still gathered in early December to make verivorstid for the Christmas Eve meal.

Tiina was delighted by the natural world, especially her beloved birds and the ocean shore, although she deeply hated squirrels. She savored summer afternoons when she could rock on the porch and watch her family swim in the sea, play kickball, or put on dance shows. She loved classical music, especially opera and Frederica von Stade, but also Clyde McCoy, Nina Simone, Lee "Scratch" Perry, and Orchestra Baobab. She found politics exasperating — Rhode Island politics in particular — but also endlessly absorbing, and she knew to her core what a privilege it was to have the freedom to vote, demonstrate, and speak openly without fear of deportation or death.

Tiina is survived by Karin E. Liiv and her husband Rev. John E. Holt, of Middletown, R.I.; A. Mark Liiv, his wife Erin Liiv, and their children Kai Liiv and Maisie McDermott, of Bodega, Calif; Aini Lee Maripuu and Eric Leslie of Middletown; Loit Maripuu, of Ann Arbor, Mich.; Julie Holt, Andrew Kambour, and Samantha and Phoebe Kambour-Holt of Washington, D.C.; Theo Holt, Breanna Draxler, and Osier and Calder Draxler of Seattle, Wash; Megan MacDonald and Sam and Malcolm Trott of Amesbury, Mass.; Teresa, John, and Colin MacDonald of Middletown; and her extremely spoiled grandcat, Pako.

Besides her husband and parents, Tiina was preceded in death by her daughter, Ingrid Kai Liiv, and her sister, Reet Maripuu.

A Service of Remembrance will be held in spring 2024. Donations in her memory may be made to The Boston Estonian Society (bostonestoni.org) or the Aquidneck Island Land Trust (ailt.org). Additional information at [www.memorialfuneralhome.com](http://www.memorialfuneralhome.com).

**NEWS BRIEFS**

**Transfer station stickers on sale**

If you use the transfer station and you haven't purchased your new 18-month sticker yet, you can get them at the Tax Collector's office at Portsmouth Town Hall.

The price for access to the Hedly Street or Prudence Island transfer stations from January 2024 to June 30, 2025 is \$385 for the first vehicle per household and \$10 for one additional vehicle per household. Stickers can be purchased during normal business hours: 8:30 a.m. to 4:30 p.m., Monday through Wednesday; 8:30 a.m. to 6:30 p.m. on Thursday; and 8:30 a.m. to 2:30 p.m. on Friday.

Last year's transfer station sticker will provide entry into either transfer station until Jan. 31, 2024.

The town continues the pay-as-you-throw (PAYT) program used in conjunction with its transfer stations. All residential household waste must be disposed of in specially marked town-approved bags residents purchase at area stores.

Recycling is disposed of free of charge. Yard waste drop-off, also free of charge, is available from March 15 to Dec. 31. The Hedly Street

transfer station offers a wide variety of diversion bins to dispose of various household items, most of which are free.

The application with 2024 rules for each transfer station, FAQs, links, and more are found on the Town of Portsmouth's website at [www.portsmouthri.gov/182/Transfer-Station-Solid-Waste](http://www.portsmouthri.gov/182/Transfer-Station-Solid-Waste).

Residents may purchase stickers by mail using the application form for the applicable transfer station, which are available on the town's website and at Town Hall. Instructions and documents needed for mail applications are listed on the application itself. The town is not responsible for lost mail applications.

If you have any sticker questions, call the Tax Collector's office at 401/683-1214. For PAYT program or recycling questions, e-mail [publicworks@portsmouthri.gov](mailto:publicworks@portsmouthri.gov) or call 401/683-0362.

**Water board meets Jan. 23**

The Administrative Board of the Portsmouth Water and Fire District will meet at 7 p.m. on Tuesday, Jan. 23, at 1944 East Main Road.

Visit [www.portsmouthwater.org](http://www.portsmouthwater.org) for call-in information.

**WILD CAT OIL CO.**

24 Hour Burner Service Available

**624-3453**

Call for Daily Prices

\* price subject to change

**ACAI BOWLS!**

**THE COOKS HOUSE**  
SEEKONK, MA

Stop in for prepared foods to go, homemade soups, daily specials and so much more

Visit our website for more options.

2 Olney Street (Brairwood Plaza) Seekonk, MA

**508-557-0091**

[thecookshouseseekonk.com](http://thecookshouseseekonk.com)

**NEW YEAR NEW LOVE!**

Contact Debra at **Get Ready To Date!**

Call for a Complimentary Consultation

**401-289-0900**

[getreadytodate.com](http://getreadytodate.com)

Facebook, Instagram, Twitter, YouTube icons

**Matthew R. Asaro, D.M.D.**  
Quality Dentistry in a Caring Atmosphere

State-of-the-art equipment and materials.

- Family, Cosmetic & Implant Dentistry
- TMJ Treatment • House Calls
- New Patients Welcome
- Ample Parking

141 County Road, Barrington • 245-4619

Established 1959

**Find more at [eastbayri.com](http://eastbayri.com) 24/7**



**AROUND TOWN**

**Open mic nights are twice a month**

Michelle Siegal and Don Farias are hosting a new open mic on the second and fourth Thursdays of the month, Jan. 11 and 25, from 7 to 10 p.m. at the Portsmouth VFW on Anthony Road. All musicians are welcome and it's just plug and play.

**Community chorus invites new singers**

The Greater Tiverton Community Chorus will resume rehearsing for its concert performances on Thursday, Jan. 11. Membership is open to anyone interested in singing. No audition is required. Rehearsals are held at Amicable Congregational Church, 3736 Main Road, just north of Tiverton Four Corners, on Thursdays from 7 to 9:15 p.m. They sing classical music as well as a mixture of lighter contemporary music.

An open sing occurs during the first three rehearsals of each season. For more information, visit the website at [www.greatertivertoncc.org](http://www.greatertivertoncc.org) or email [greatertivertonchorus@gmail.com](mailto:greatertivertonchorus@gmail.com).

**Food bank open on Fridays and Wednesdays**

The St. John's Lodge Food Bank at 81 Sprague St. is open on Fridays and Wednesdays from 10 a.m. to 4 p.m. Enter the marked lane and a volunteer will come out to your car to assist you. All residents are welcome.

Food and financial donations can be made in person during operating hours. Financial donations also can be made online by visiting [www.stjohnslodgeno1.org/foodbank](http://www.stjohnslodgeno1.org/foodbank).

For more information, call 683-3674 or email them at [stjohns1foodbank@gmail.com](mailto:stjohns1foodbank@gmail.com).

**Group for compulsive gamblers is on Fridays**

If you're seeking help and support for compulsive gambling, Holy Trinity Episcopal Church in Tiverton hosts the East Bay Gamblers' Meeting, moderated by a facilitator, on Fridays from 7 to 8:30 p.m. This closed group meeting is for those directly affected by gambling issues.

It is in the upper level function room at the church at 1956 Main Road. It's a group of men and women sharing their experience, strength and hope with each other to address their common problem. The group is not allied with any denomination or institution. For more information, call 624-4759. The group is sponsored by the Newport County Prevention Coalition.

**January offerings from The Sacred Center**

Join the Rev. Shelley Dungan from The

Sacred Center at Norman Bird Sanctuary in Middletown every Saturday from 10 to 11:30 a.m. for gentle yoga for all and meditation.

The Sacred Time Book Group will meet on Thursday, Jan. 25, from 11 a.m. to 12:30 p.m. (email Rev. Shelley for details),

A Gentle Yoga & Sacred Sound Journey is on Sunday, Jan. 28, from 6 to 7:30 p.m.

All these gatherings are by donation. Register on The Sacred Center Eventbrite page.

Questions? Email Rev Shelley at [yogishelley@sacred-center.org](mailto:yogishelley@sacred-center.org) or call 860/965-9995.

**Newport Car Museum has 95-plus cars, more**

The Newport Car Museum, 1947 West Main Road (enter at the light) in Portsmouth, is open daily from 10 a.m. to 5 p.m. and has 95-plus cars exhibited in seven galleries (Ford/Shelby, Corvette, Porsche, World Cars, Fin Cars, Mopars, American Muscle), and a collection of mid-century modern furniture integrated into spacious surroundings. There are no barrier ropes around the cars, and plenty of docents to help answer questions.

Hours are from 10 a.m. to 5 p.m. daily. Regular museum admission is \$20 for adults, \$16 for seniors, military and students, \$10 for ages 5 to 12 (with an adult), and free for ages 4 and under (with an adult).

Visit [www.newportcarmuseum.org](http://www.newportcarmuseum.org) for more information and directions.

**Parkinson's support group to meet Saturday**

An Aquidneck Island support group will provide an opportunity for people living with Parkinson's disease to share personal experiences, feelings and coping strategies, to provide educational opportunities related to the disease, and to empower participants to take action toward living well with Parkinson's disease.

Kristin Matteson, a licensed occupational therapist and certified PRW!Moves instructor, is the facilitator for the group, which will meet on the second Saturday of each month, Jan. 13, at Middletown Public Library. This month, the meeting is from 10:30 to 11:30 a.m. In addition to providing an open forum to share information, educational topics will be presented by specialists in fields related to living with Parkinson's and movement disorders.

Individuals living with Parkinson's and their care partners are welcome to attend the group monthly or as desired with no obligation for attendance. There is no fee, and parking is free.

For more information, contact Kristin Matteson, MS OT CMES, at [kmatri@hotmail.com](mailto:kmatri@hotmail.com) or 743-6183.

**Pancake breakfast fund-raiser for scouts**

The Knights of Columbus with local Boy Scout Troops 1 and 82 will hold a Boy Scout breakfast fund-raiser on Sunday, Jan. 14, from 8 a.m. to noon at the St. Barnabas Church social hall, 1697 East Main Road.

Breakfast will include pancakes, eggs, sausage, potatoes, coffee, juice and water. Meals are dine-in and/or take-out.

Tickets can be purchased at the door or the offices of St. Barnabas, St. Anthony and Portsmouth United Methodist churches. Tickets are \$12 for adults and \$6 for children 6 to 12. It is free for those under 6.

**Veterans' initiative offers monthly lunch**

The Building Bridges Veterans Initiative brings veterans together with complimentary meals to share friendship and support, build-

**To Submit Community News**

**BY EMAIL (PREFERRED):** [lrego@eastbaymediagroup.com](mailto:lrego@eastbaymediagroup.com)

**BY MAIL:** Portsmouth Times, Community News, P.O. Box 90, Bristol, RI 02809

**FOR MORE INFORMATION:** 401/253-6000, ext. 107

Photos are encouraged. Email a high-resolution jpg or tif and send it as an attachment.

Milestone events, such as births, weddings, engagements, etc., must be submitted within the year following the event.

**DEADLINE: 9 a.m. on Tuesdays**

ing a trusting community of support and healing. The site has moved to Woodrow L. Silvia Post 5382, Veterans of Foreign Wars, 134 Shove St., Tiverton.

Lunch (their treat) is on the third Monday of the month, Jan. 15, at 11:30 a.m. Lunch is complimentary for any veteran and their guest. Meet, enjoy lunch and share some conversation with other vets.

The initiative was established in 2015. It has 13 sites and more are on the way. Want to volunteer? Email them at [buildingbridgesveterans@gmail.com](mailto:buildingbridgesveterans@gmail.com).

**Bridge club meets Tuesdays and Fridays**

The Viking Bridge Club plays bridge at the Common Fence Point Community Center at 933 Anthony Road. Although they play competitive duplicate bridge, the focus is on fun and sociability.

See more **AROUND TOWN** Page 11



*Travers Plumbing & Heating, Inc.*  
*Cesspool & Septic Services*

RI Certified Inspector

Problem Septic Systems  
Our Speciality

**Residential & Commercial**  
Drain Cleaning, High Velocity Water Jetting,  
Backhoe Service & Video Pipeline Inspection  
200 Feet of Hose - Avoid Lawn Damage  
Ports-Johns Available



24 HOUR  
EMERGENCY  
SERVICE

See Our Discounts At: [www.traversplumbing.com](http://www.traversplumbing.com) **Now 3 Trucks... To Serve You Better!** RI Lic #855



**624-7548 • 683-0370 • 849-1505**

Tiverton/Little Compton   Portsmouth/Middletown   Newport/Jamestown

Studio  
*by the*  
Sea

Peter Tirpaek: Jeweler

\*Custom Jewelry  
\*Repairs \*Redesign  
\*Gold Platinum Sterling



*Transforming Ideas into Heirlooms  
using what you may already have*

Expert onsite repair \* Next day service available  
Colored Stones, Diamonds, Wedding Bands

3848 Main Rd Tiverton Four Corners  
401-639-4348 • [seathestudio@gmail.com](mailto:seathestudio@gmail.com)  
[studiobythesea.com](http://studiobythesea.com) @studio\_by\_the\_sea

The Sacred Cow



Happy New Year!

Local Items • Ice Cream Year Round  
Mon - Sat 10 am - 6 pm  
Sundays 12 pm - 5 pm

JOIN OUR LOYALTY PROGRAM!  
(401) 537-4424 @ Munroe Dairy • 187 N Brow St • EP  
[facebook.com/sacredcowmarket](http://facebook.com/sacredcowmarket)



1235 Wampanoag Trail,  
Riverside, RI

401 437-9223

selfdefenseri.com



Like us on Facebook & Instagram





SANTORO OIL

— A TOTAL ENERGY COMPANY —

Heating Oil • Propane • Diesel Fuels

Propane  
Service Plans  
Air Conditioning  
Heating & AC Service

Heating Oil  
Water Heaters  
Indoor Air Quality  
Boiler/Furnace Installs

401-942-5000

SantoroOil.com



Family Owned & Operated Since 1952



101 Corliss St, Providence, RI 02904



# Portsmouth Abbey School names dean's list, honor roll

Portsmouth students received academic honors for the fall term at Portsmouth Abbey School.

## Dean's list

**Form VI (Senior):** Christopher DeSantis, Madison Harkins, Nathan Lee, Hunter Leviss, Brayden Gittus, Regan Landers, James Meko, Jonathan Mammen and Nathan Nunes.

**Form V (junior):** Lila Bragan, Gabriel Devaney and John Paul Devaney.

**Form IV (sophomore):** Celia Cord, Dino De Marzio, Jack Dring, Matilda Holling, Joseph Levreault, Michael O'Hara and Evelyn Meko.

**Form III (freshman):** Lindsey

Babine, Bridget Devaney, Paige Gittus, Cecelia Finnegan, Brooke Marston, Keegan McCarthy, Lauren McGee, Ainsley Moe and William Plumb.

## Honor roll

**Form VI (senior):** Finn Gibbons, Shea Heelan, Thomas O'Hara and Charles Townsend.

**Form V (junior):** Layla Grilli, Ella Liuzza and Hannah Zelden.

**Form IV (sophomore):** Brody Cimaglia, Ethan Gerrior, Reed Heelan, Shane Roman and Dean Russolino.

**Form III (freshman):** Jessleanna LeComte-DaQuay.

## ACHIEVEMENTS

**JAMES HALEY** of Portsmouth, a member of the Class of 2026 at Pomfret School, was named to the fall honors list.

**NATHAN LEVINE** of Portsmouth was named to the fall semester dean's list at Marquette University where he is majoring in finance.

Portsmouth students received academic honors for the fall term at Southern New Hampshire University. Named to the president's list were **ABIGAIL BRENNICK, STACY NELSON, CANDICE MEDEIROS**

and **REBEKAH DYL**. Named to the dean's list was **GIANNA McDONOUGH**.

**ILJANA KRAJACICH** of Portsmouth was named to the fall semester dean's list at the University of Evansville. Iljana is studying archaeology.

**ALEC DARMINIO** of Portsmouth was named to the fall semester dean's list at Hofstra University where he is a member of the Class of 2025 studying health science.

## RELIGION

### Temple Shalom

People of all faiths are welcome to join Martin Luther King Jr. Shabbat services on Friday, Jan. 12, at 6 p.m. at Temple Shalom, Middletown.

On Sunday, Jan. 27, at 10 a.m., they will dedicate the Torah scroll on permanent loan from Congregation B'nai Israel of Woonsocket. Join them afterward for a *kiddush* (collation).

For questions, or more information, visit [templeshalomrhodeisland.org](http://templeshalomrhodeisland.org), email [templeshalomrhodeisland@gmail.com](mailto:templeshalomrhodeisland@gmail.com) or call the office at 846-9002.

### St. Paul's Episcopal

Regular Sunday services are at 10 a.m. at St. Paul's Episcopal Church,

2679 East Main Road.

The parish hall serves as the studio and gallery for the Portsmouth Arts Guild, which is open around the church's service time.

Parking is in the lot on Church Lane. For more information, call the parish office at 683-1164.

### United Methodist

Portsmouth United Methodist Church at 2732 East Main Road has worship services at 10 a.m. on Sunday. The message is given by Pastor Yusong Kim.

Church school is held after the morning children's message.

For information on Saturday evening services, or for any questions, call the church office at 683-4005.

## SENIORS

### Mahjong, billiards, t'ai ji quan, line dancing

The Portsmouth Multi-Purpose Senior Center at 110 Bristol Ferry Road is open on weekdays from 9 a.m. to 3 p.m. For more information, call 683-4106.

The thrift shop is open Monday to Friday from 10 a.m. to 1 p.m. Donations are accepted by appointment only.

The Senior Health Insurance Program (SHIP) is available with Katie Jones by appointment only at 846-7426, ext. 4.

### Ongoing activities

Mahjong is every Friday at 10:30 a.m. New players are welcome. Call the office if you would like to learn to play or get a refresher course. The

## Portsmouth Friends

Portsmouth Friends Church, 11 Middle Road, holds Sunday services at 10:30 a.m. in a 300-year-old historic meetinghouse.

A Wednesday Bible study is at 11 a.m.

For more information, call 683-1109 or visit [www.portsmouthfriends.org](http://www.portsmouthfriends.org).

## St. Mary's Church

All are welcome to attend services every Sunday at 9 a.m. at St. Mary's Church. Reserved parking is available for families with young children.

Services also are live-streamed on St. Mary's Facebook page.

## ON THE MOVE

Greenwich Bay Brokers, recently chosen as one of the most innovative real estate brokerages in the state by Providence Business News, is expanding with the addition of two new agents, including **BRIDGET STERNBERG** of Portsmouth.

Sternberg has a background in marketing and design, moved here from the south shore of Massachusetts nearly a decade ago and lives in Portsmouth with her husband, a Rhode Island state trooper.



instructor is Rita St. Laurent.

Billiards is at 9 a.m. on Tuesday to Friday.

T'ai ji quan is from 2 to 3 p.m. on Fridays with instructor Sophia Deiss.

On Mondays, Balance & Strength is at 9:30 a.m. with Jessica Shea at St. John's Lodge, Sprague Street.

The Alzheimer's group meets every Monday at 10:30 a.m.

On Mondays, line dance (held at CFP) is at 10:30 a.m. with Sandra Tabak, and adult coloring is at 12:30 p.m.

Free video exercise with Richard Simmons is at 9 a.m. in the library on Wednesdays and Fridays.

On Tuesdays, Balance & Strength is at 11 a.m. with Jessica Shea. A modern music group, Off Their Rockers, singing classic rock, is at 12:30 p.m. with coordinator Claire Eklund. If you play an instrument, bring it to the session.

T'ai ji quan is from 3 to 4 p.m. on Tuesdays with instructor Sophia Deiss.

On Wednesdays, the Walking Club is at 10 a.m., and Country Jammin is at 12:30 p.m. It is open to musicians.

On Thursdays, chorus is at 9:30 a.m.

On Thursdays, Zumba Gold is at St. John's Lodge, Sprague Street, at 11 a.m. with Jessica Shea.

A new Hi-Lo Jack (Pitch) Club is on Thursdays at 12:30 p.m. New members are welcome.

On Fridays, the Walking Club is at 10 a.m.

### To Submit Community News

#### BY EMAIL (PREFERRED):

[lrego@eastbaymediagroup.com](mailto:lrego@eastbaymediagroup.com)

**BY MAIL:** Portsmouth Times, Community News, P.O. Box 90, Bristol, RI 02809

#### FOR MORE INFORMATION:

401/253-6000, ext. 107

Photos are encouraged. Email a high-resolution jpg or tif and send it as an attachment.

Milestone events, such as births, weddings, engagements, etc., must be submitted within the year following the event.

**DEADLINE: 9 a.m. on Tuesdays**

## Rewriting the Rules of Retirement



Retirement comes with more time for the things you love. A reverse mortgage can help you fund them.

- ✓ Pay off your existing mortgage to eliminate monthly payments<sup>1</sup>
- ✓ Get additional income tax-free cash to use for what matters most<sup>2</sup>
- ✓ Continue to own your home just like a traditional mortgage



NMLS #595725

Contact **Carol Miller**, your local Reverse Mortgage Specialist.

☎ (401) 406-1247 (Cell)

✉ [carol.miller@longbridge-financial.com](mailto:carol.miller@longbridge-financial.com)

1. Property taxes, homeowners' insurance, and home maintenance required. The home must be your primary residence.  
2. Consult a financial advisor and appropriate government agencies for any effect on taxes or government benefits.  
Branch Office: 11 International Blvd., Suite 900 Mahwah, NJ 07495. NMLS #957935. Licensed by Rhode Island Third Party Loan Servicer License 20193879LS, Rhode Island Lender License 20153084LL, MA Debt Collector License DC957935, Mortgage Lender License, with reverse mortgage authority ML 957935.



COMEDY LUNCH or DINNER SHOWS

## AGING DISGRACEFULLY

STARRING DOREEN COLLINS & CHARLIE HALL

~ EST. 1968 ~

**McGovern's**  
Family Restaurant

**Sunday Feb. 11 - Matinee**  
Arrival 12:30, Lunch 1pm,  
Show follows

Choice of 4 Entrees: Killarney Stuffed Breast of Chicken or Baked Scrod Fish & Chips. \$55 includes tax and tip

Located at 310 Shove St Fall River, MA

Reservations/Info/More dates at

[AGINGDISGRACEFULLY.NET/288-1188](http://AGINGDISGRACEFULLY.NET/288-1188)

## AROUND TOWN

From Page 9

The club offers in-person bridge games for fully-vaccinated players on Tuesdays and Fridays at 12:15 p.m. A Thursday afternoon game is for new players or those returning to the game.

Details on the club and its community activities can be found at [www.vikingbridgeclub.com](http://www.vikingbridgeclub.com).

## Speaker Series topic will be the slave trade

The Diversity, Equality, Inclusion, and Belonging Committee at The Pennfield School invites everyone to attend its Speaker Series on Tuesday, Jan. 16, at 6:30 p.m.

Catherine W. Zipf, award-winning architectural historian and executive director of the Bristol Historical and Preservation Society, will talk about Bristol and the transatlantic slave trade. RSVP for this free presentation on their website at [pennfield.org](http://pennfield.org).

## Newport Navy Chorus seeking new singers

The Newport Navy Chorus is seeking new singers in all voice ranges for its 2024 season. Benefit concerts for nonprofit charitable organizations will be held in May and December.

Membership is extended to active duty, reserve and retired persons of all armed service branches, civilian employees of Department of Defense, Naval War College students and staff, and spouses and children over age 16.

There are no auditions and the ability to read music is not required – just a love of singing and helping the local community.

Rehearsals are held on Tuesdays from 7 to 9:30 p.m. in Room 100 of Perry Hall, Building

440 on the Navy Base.

Try them out for the next two rehearsals on Jan. 16 and 23. The registration fee is \$25.

For additional information, call Pat McGue at 835-2550 or music director Lori McDowell at 862-3334.

## Chair yoga at Common Fence on Wednesdays

Chair yoga for all levels is offered on Wednesdays from 1 to 2 p.m. with Kate Ward at the Common Fence Point Community Center on Anthony Road. Dress comfortably. No registration required. Questions? Email Kate at [kwardyoga@gmail.com](mailto:kwardyoga@gmail.com).

## Domestic violence services are offered

The Women's Resource Center has free and confidential domestic violence support services every Thursday from 10 a.m. to 2 p.m. at 624 Main St., Warren. Just drop in. Or, call the

24-hour hotline at 800/494-8100.

## Gentle community yoga is at CFP center

Gentle community yoga is at Common Fence Point community center on Anthony Road on Thursdays from 9:30 to 10:45 a.m. The Rev Shelley Dungan and Kate Ward will alternate teaching this beginner-friendly, all-levels yoga class.

No registration is needed, cash at the door, sliding scale \$10 to \$20 per student. Bring your own yoga mat and blanket. Questions? Email [yogishelley@gmail.com](mailto:yogishelley@gmail.com).

## Mosaic Club to meet on Jan. 18

The Mosaic Club of Newport County will hold its next meeting on Thursday, Jan. 18, at 6 p.m. at Green Valley Country Club, Portsmouth.

In December, members collected and deliv-

ered 315 pairs of socks to McKinney Cooperative Shelter, Newport. And members made Christmas cards and delivered them to area nursing homes.

Membership in the Mosaic Club is open to those interested in furthering the aims of the organization, which is charitable, educational and social and service activities. For more information, contact club President Dottie Maher at [dmaher6675@aol.com](mailto:dmaher6675@aol.com).

## Blood center is still in need of donations

At this time, the R.I. Blood Center is in need of blood and platelet donations. Donor centers around the state are open and you can make an appointment to donate blood at your convenience. All types are needed; but, there is an additional need for blood types O, O-, A-, B-, AB-.

To schedule an appointment, visit [donate.ribc.org](http://donate.ribc.org) or call 453-8360. The closest center in the East Bay is the Aquidneck Donor Center in Middletown

## AT THE LIBRARY

### Services at library

The library and Book Nook are open to patrons during normal business hours. Books can be returned in the book drop or inside. Staff can assist with finding books, placing holds, special loan requests, technology questions and much more.

Computers, printing, faxing/scanning and notary services are available.

There is always something going on at the library.

- Drop in for cribbage every Monday at 1 p.m. for this classic card game. No signup needed and beginners are welcome.

- Fiber Arts Fridays meet the first and third

Fridays of each month. Drop in with your work in progress for conversation and an hour of needlework.

For a complete list of offerings, programs, activities and more, see the online events calendar.

### Free chair yoga

Marie Brennan-Chasin will conduct chair yoga sessions at the library on Tuesdays from 10:45 a.m. to noon. Chair yoga is a gentle approach to yoga that is practiced sitting in a chair, and, often, standing using a chair. But, participants receive all the benefits of yoga.

Also, guided methods of breathing exercises will be introduced to help relieve tension and

relax more. A yoga mat and a bottle of water for your comfort and enjoyment is recommended.

The program is free and open to the public, but registration is required. Call or sign up online.

The program is funded by the R.I. Foundation Community Gifts Grant.

*Portsmouth Free Public Library is at 2658 East Main Road. Hours are from 9 a.m. to 8 p.m. on Monday to Wednesday, 9 a.m. to 6 p.m. Thursday and Friday, 9 a.m. to 5 p.m. on Saturday, and 1 to 5 p.m. on Sunday. For more information, call 683-9457 or visit the website at [www.portsmouthlibrary.org](http://www.portsmouthlibrary.org).*

SPONSORED CONTENT

# A passion project, and a great place to shop



Nestled in Portsmouth's Old Almy Village lies a bright, lively shop called "The Robin's Egg," which just might be where your next great find is located! Owned by Robin Lee, The Robin's Egg is a consignment shop filled with top quality, upscale children's clothing.

It has long been Robin's dream to open a shop like this, and as it became a reality, the ideas came flooding out. From the beautifully cohesive color scheme and design, to the carefully curated collection of pieces that are of the utmost quality, everything about The Robin's Egg is incredibly well-thought out.

This isn't a new endeavor for Robin; she's worked in the retail industry in some capacity or another from a young age, and her experience is put to good use in this passion project. Having focused mostly on displays and merchandising, Robin has an eye for design and an adroitness for human connection. This has carried throughout her life, as she was awarded the Civilian Meritorious Public Service Award by the U.S. Navy during her time in Italy as a military spouse.

She arrived in Portsmouth in 2006, set out to start The Robin's Egg in 2020, and now proudly displays the vast array of goods that line her shelves. At The Robin's Egg, you'll find new and used clothes and shoes for infants to size 8. Robin also focuses a lot of attention on selecting new toys and gifts. She recently attended the Nuremberg toy festival, and many of her specialty brands are from Europe,

often handmade and not available in big box stores. She carries Montessori, Waldorf and Open-Ended Play toys and gifts that spark the imagination.

The Robin's Egg is conveniently located at 1016 East Main Road, Unit 3A, in Portsmouth, and is open Tuesday through Saturday from

10 a.m. to 4 p.m. Be sure to check out their website, [therobinseggri.com](http://therobinseggri.com), and Facebook, [facebook.com/therobinseggri](https://www.facebook.com/therobinseggri), to learn more, shop online, and keep up with the latest information!

## Focus on Business



Upscale Children's Consignment and Gifts

### New Winter Arrivals Are In!

New specialty toys and gifts.  
Upscale children's consignment clothing.



**HOURS:** Tuesday-Saturday 10am-4pm  
1016 East Main Road, Unit 3A, Portsmouth, RI  
**401-251-4565 • [robinseggri@gmail.com](mailto:robinseggri@gmail.com)**  
[therobinseggri.com](http://therobinseggri.com)



# East Bay Community Action Program Head Start is hiring!

**Teachers | Teacher Assistants | Substitutes  
Family Advocates | Paid Internship Opportunities**



## A Rewarding Career Path

Join our team of caring people who want to make a difference in children's lives. You'll be part of a supportive work environment at an organization that offers competitive wages, tuition reimbursement, and a comprehensive benefits package. We have openings in Newport and East Providence.



**Send your resume to [careers@ebcap.org](mailto:careers@ebcap.org)  
or visit [ebcap.org](http://ebcap.org) to learn more!**

**Scan to apply!**

**If you would like more information about career opportunities at Head Start, please call 401-367-2001.**

MARKET INSIGHTS

## Bristol and Warren lead the region in '23 price increases

Single-family home prices increased 28% in Bristol and 16% in Warren during 2023

With only a few exceptions, single family, 2-4 family and condominium prices in the East Bay real estate market continued to climb in 2023 vs. 2022, a continuation of a multiyear trend.



Douglas GABLINSKE

Bristol and Warren showed surprising strength in price increases. Bristol led all East Bay towns with a whopping 28 percent increase, with a median single-family price of more than \$628,000. Bristol also broke into the top 10 cities and towns with the highest single-family home values in the state of Rhode Island.

Warren followed closely behind, with a 16 percent increase and a median of \$474,500.

Increases in the rest of the East Bay cities and towns, including state median price leaders like Newport, Little Compton and Jamestown, were all less than 11 percent. So, what is happening in Bristol and Warren that would make them lead the pack?

Location appeal is my guess, based on their natural waterfront locations, which have been greatly enhanced over the past 50 years by their towns encouraging the preservation of their historic buildings' character. Interestingly, Bristol has done so with a regulatory process of a Historic District Commission. However, Warren has done so with no regulatory process - buyers have voluntarily renovated and improved their exteriors to historic standards. Their downtowns are so very quintessential New England, they reek of historic and waterfront location appeal.

These changes have now been going on for decades, street by street, house by house. Besides the historic building improvements, the towns and state have contributed to this appeal with new sidewalks, curbing, and decorative street lighting, all of which have contributed to the escalation of appeal and therefore residential values.

As a residential real estate appraiser now going on 30 years, one of the most difficult things I must prove to an underwriter in the mortgage lending process is "appeal" and what the market is

willing to pay for that intangible amenity.

Another factor I believe is the lack of buildable land in Bristol and in Warren, to a lesser degree, as there is still a significant number of buildable parcels in the northeast Warren area of Birch Swamp and Serpentine Roads, and the Touisset neighborhood. Although all these areas have significant wetlands, mitigating buildability.

Regarding units sold in the East Bay, all cities and towns in all three residential categories (single family, 2-4 family, and condominiums) showed a sharp decline in units sold. Owners who would have otherwise gone back into the real estate market are frozen into place with a low mortgage rate of 2.5% to 3.5%, a widely reported phenomenon. Therefore, homes that would normally be contributing to the real estate market inventory are sidelined.

The real estate market is like any other market and is based on the supply/demand ratio. Low inventory means higher prices, exactly what happened in the East Bay real estate market in 2023.

*Douglas Gablinske owns AppraiseRI, a 28-year-old statewide real estate company located in Bristol, R.I. He is Chairman of the Warren Taxpayer Appeal Board, is a member of the RI Real Estate Appraisal Board, licensed Real Estate Appraiser and Broker, and is a consultant to the new RI Department of Housing. He can be reached at Doug@AppraiseRI.biz.*

### The most expensive places to live in R.I.

The East Bay is now home to seven of the top 10 communities for single-family home values in the state of Rhode Island. Bristol broke into the top 10 with a 28% increase in values in 2023. Shown below are the top 10 communities and their median single-family home value in 2023.

1. New Shoreham: \$1,650,000
2. Jamestown: \$1,015,000
3. Little Compton: \$950,000
4. Newport: \$893,000
5. Middletown: \$722,500
6. Barrington: \$710,000
7. East Greenwich: \$697,500
8. Portsmouth: \$697,000
9. Bristol: \$628,697
10. South Kingstown: \$560,000

East Bay Real Estate 2023 vs. 2022						
	SOLD PRICES			UNITS SOLD		
	2022	2023	%	2022	2023	%
<b>BRISTOL</b>						
Single Family	\$500,000	\$628,697	28%	172	134	-22%
2-4 Family	\$530,000	\$549,000	4%	26	23	-11%
Condominium	\$431,750	\$500,000	16%	44	29	-34%
<b>WARREN</b>						
Single Family	\$409,950	\$474,500	16%	82	55	-33%
2-4 Family	\$461,000	\$460,000	0%	19	13	-32%
Condominium	\$275,000	\$490,000	78%	25	20	-20%
<b>BARRINGTON</b>						
Single Family	\$680,000	\$710,000	4%	241	191	-21%
2-4 Family	\$537,500	\$450,000	-16%	8	3	-63%
Condominium	\$365,000	\$317,500	-13%	14	1	-92%
<b>PORTSMOUTH</b>						
Single Family	\$640,000	\$697,000	9%	239	182	-24%
2-4 Family	\$745,000	\$725,000	-3%	6	2	-67%
Condominium	\$510,000	\$675,000	32%	45	39	-13%
<b>MIDDLETOWN</b>						
Single Family	\$675,000	\$722,500	7%	118	104	-12%
2-4 Family	\$732,500	\$877,500	20%	14	6	-57%
Condominium	\$522,500	\$507,500	-3%	12	20	67%
<b>NEWPORT</b>						
Single Family	\$807,750	\$893,000	11%	164	124	-24%
2-4 Family	\$931,500	\$1,075,000	15%	52	31	-40%
Condominium	\$560,000	\$592,000	6%	123	102	-17%
<b>TIVERTON</b>						
Single Family	\$425,000	\$450,000	6%	184	146	-21%
2-4 Family	\$452,000	\$525,000	16%	12	5	-58%
Condominium	\$615,450	\$725,000	18%	28	21	-25%
<b>LITTLE COMPTON</b>						
Single Family	\$875,000	\$950,000	9%	43	31	-28%
<b>JAMESTOWN</b>						
Single Family	\$997,000	\$1,015,000	2%	70	68	-3%
Condominium	\$745,000	\$1,050,000	41%	8	11	38%
<b>EAST PROVIDENCE</b>						
Single Family	\$365,000	\$390,000	10%	411	373	-9%
2-4 Family	\$430,000	\$452,500	6%	98	62	-37%
Condominium	\$278,750	\$303,500	9%	42	25	-41%

As the chart above shows, single-family home prices increased in every East Bay community last year, typically by 10% or more. However, the highest increases were in Bristol (28%) and Warren (16%). And in every community, in every type of property, the number of sales declined, often sharply.



# Join us for a 5-part workshop

## Taking Control of Your Aging Journey

### EVENT DATES:

Balance, Flexibility and Gait ----- January 25 | 3pm

Exercise is a gift ----- February 28 | 2pm

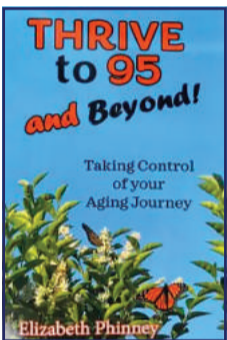
The Mind-Body Partnership ----- March 19 | 4pm

Stress - The Silent Saboteur ----- April 22 | 7 pm

You are What You Eat - Literally ----- May 18 | 3pm

Each workshop is 90 minutes and will include a break with refreshments.

Please register by calling Marsha at 401-592-0400



### Led by Elizabeth Phinney, author of Thrive to 95 and Beyond

Over the last 20+ years, Elizabeth has developed and fine-tuned fitness techniques and theories that can work for you. As a trainer, she is immersed in the mind/body/spirit connection to fitness.

115 East Main Road • Little Compton, RI | [lcwellness.org](http://lcwellness.org)



## 'Music At Imago' returns

Join Imago Foundation for the Arts as it welcomes The GCD Trio with Candida Rose. The trio (Phil Gruppuso on piano, George Correia on drums and John DeBossu on bass) has performed together for 20 years and plays in a variety of styles, most often emulating the classic piano trios of the mid-20th century. "Candida Rose" Baptista's music combines her Cape Verdean musical roots with American (primarily jazz) influences, a mixture she calls KabuJazz.

WHAT: "Music at Imago"  
WHEN: Sunday, Jan. 14, at 4 p.m.; doors open at 3:30  
WHERE: Imago Gallery, 36 Market St., Warren  
COST: \$20  
MORE INFO: Tickets at the door, on EventBrite at <https://GCDTrioandCandidaRoseatImago.eventbrite.com>, or call 401/392-1322.



## Free film lecture series

Join librarian Doug Swiszc as he salutes one of classic cinema's most unforgettable actors in his latest film lecture series, "Charles Laughton: Larger Than Life." Films are "Island of Lost Souls" (1932) on Jan. 10, "Mutiny of the Bounty" (1935) on Jan. 17, "The Hunchback of Notre Dame" (1939) on Jan. 24, and "Witness for the Prosecution" (1957) on Jan. 31. See them on the big screen with Surround Sound.

WHAT: Film lecture series  
WHEN: Wednesdays at 1 p.m. in January  
WHERE: Barrington Public Library, 281 County Road  
COST: Free and open to the public  
MORE INFO: Recommended for adults, but all are welcome. Registration not required, but recommended at [barringtonlibrary.org](http://barringtonlibrary.org).

# A & E METAL RECYCLING IS OPEN FOR BUSINESS

We Pay **CASH** for your recyclable metals. Wanted to buy metals for recycling, we pay cash. Copper, Brass, Aluminum, Electronics, Etc.



### RECYCLING

### FOR BOTH COMMERCIAL AND RESIDENTIAL SCRAP METALS

### BRING YOUR METALS IN FOR A **FREE GIFT**



Located at 451 American Legion Hwy Westport, MA

774-264-9222 • [aemetals.com](http://aemetals.com)

FULLY LICENSED

## FIREPLACE SHOWCASE

*Warming up the Community*

THE AREA'S LARGEST SHOWROOM

**FREE TON OF PELLETS**

**ALL HARMAN STOVES & INSERTS THRU 1/31/24**



**HARMAN**  
BUILT TO A STANDARD, NOT A PRICE

775 Fall River Avenue, Seekonk, MA  
[thefireplaceshowcase.com](http://thefireplaceshowcase.com)

508-336-2600

**NO FLUKE**



The New England Saltwater Fishing Show is March 8, 9 and 10 at the Rhode Island Convention Center, Providence. The Marlborough Fly Fishing Show is this weekend.

## Rhody Fly Rodders celebrate 60th anniversary

The Rhody Fly Rodders, the oldest chartered saltwater fly club in America, is holding a 60th Anniversary Banquet Celebration Saturday, Jan. 20, at 1 p.m. at Wright's Farm Restaurant, 84 Inman Road, Harrisville, R.I. The event is open to the public.



**Capt. Dave MONTI**

"This is a major milestone in our club's history. We welcome and would be honored to have as many past presidents, board members, inactive members as possible, as well as those presently active in the club. It was their energy and foresight in the beginning that helped the club grow and prosper to where it is today," said Capt. Ray Stachelek, president of the Rhody Fly Rodders. "Sixty years is a long time, and when you think about the technological advances during this period it is amazing; from the Chase Bobbin Holder, to rotary vises, to light cure adhesives, and the progression of the fly rod from bamboo, fiberglass, to the current state of the art graphite."

Capt. Stachelek said there will be lots to see and do at the celebration. For information and tickets, contact Capt. Ray Stachelek at [www.castflycharters.com](http://www.castflycharters.com) or 401.884.379.

### New England Saltwater Fishing Show in March

The New England Saltwater Fishing Show

is Friday, March 8, to Sunday, March 10, at the Rhode Island Convention Center, Providence. If you like to fish on the salt, you are in for a big treat. The show is the largest saltwater fishing show of its type in the Northeast.

The show features tackle, rods, reels, lures, electronics, charter guides, boats, engines, accessories, clothing and much more. More than 300 fishing related manufacturers are expected to be represented at the show.

"From what we hear so far, you won't want to miss the show specials offered by exhibitors and the great 'how to' seminars being offered by some of our areas top fishers," said Scott Travers, executive director of the Rhode Island Saltwater Anglers Association, Show sponsors. "Learn strategies and tactics to target species such as striped bass, summer flounder, tautog and a host of others."

### Where's the bite?

Freshwater fishing in stocked ponds for trout and salmon continues to be very good, with a decent largemouth and smallmouth bass bite. For a complete list of trout stocked ponds in Massachusetts visit Mass Wildlife at Trout stocking report | [Mass.gov](http://Mass.gov) and in Rhode Island visit [www.dem.ri.gov/fishing](http://www.dem.ri.gov/fishing), or call 401-789-0281 or 401-539-0019 for more information on trout stocking.

Dave Monti holds a captain's license and charter fishing license. Forward fishing news and photos to [dmontifish@verison.net](mailto:dmontifish@verison.net) or visit [www.noflukefishing.com](http://www.noflukefishing.com).

### The Tides\*

	HiAM	HiPM	LoAM	LoPM	Sunrise	Sunset
Wednesday, Jan. 10	6:41 (4.6)	7:05 (3.8)	—	12:39	7:09	4:35
Thursday, Jan. 11	7:29 (4.9)	7:54 (4.1)	12:16	1:27	7:09	4:36
Friday, Jan. 12	8:18 (5.0)	8:43 (4.3)	1:09	2:13	7:08	4:38
Saturday, Jan. 13	9:08 (5.0)	9:34 (4.4)	2:01	2:55	7:08	4:39
Sunday, Jan. 14	9:58 (4.9)	10:27 (4.5)	2:53	3:36	7:08	4:40
Monday, Jan. 15	10:51 (4.6)	11:22 (4.5)	3:45	4:17	7:07	4:41
Tuesday, Jan. 16	11:46 (4.3)	—	4:40	5:01	7:07	4:42
Wednesday, Jan. 17	12:19 (4.4)	12:41 (3.9)	5:50	5:51	7:06	4:43
Thursday, Jan. 18	1:16 (4.3)	1:38 (3.6)	7:41	6:50	7:06	4:44

**New Moon January 11 — Full Moon January 25**

\* Information is based on tides in Bristol Harbor.

# ISH STONE HOUSE

CIRCA 1854

## Dine & Stay

Reserve an overnight stay and enjoy a cozy three-course dinner in our Tap Room Restaurant, a former speakeasy during the Prohibition era.

**1 Bedroom Suite and Dinner for Two – \$299**

**2 Bedroom Suite and Dinner for Four – \$490**

**Barn Studio and Dinner for Two – \$270**

**Studio Suite and Dinner for Two – \$240**

*\*Drinks, taxes and gratuity additional. Direct bookings only. Valid through April 2024.*

**Call 401-635-2222 for reservations.**

**122 Sakonnet Point Rd. | Little Compton, RI**  
**[www.newportexperience.com](http://www.newportexperience.com)**

## Your Support is Needed



**Free coastal cruising for mobility impaired Disabled youngsters aboard our beautiful 35 foot "2nd Wind" in Bristol Harbor.**



### Donate to Become a 2024 sponsor

Help to enable our spring and summer Harbor excursions & fishing program

**Online at: [www.2ndwindfoundation.org](http://www.2ndwindfoundation.org)**

*A Rhode Island 501 C 3 non-profit corporation*

**Or mail a check to:**

2nd Wind Foundation PO Box 781 Bristol RI.02809

*All donations are tax exempt for 2024.*



CLIMBING THE FAMILY TREE

# Kick off the New Year by adding details to your family tree

BY LYNDA REGO  
lrego@eastbaymediagroup.com

One of my New Year's resolutions every year is to spend more time on my genealogy research. This past year, I didn't do very well. So, since January and February are quiet months (with no gardening luring me to the backyard), I plan to really get some work done on my trees.

**A few websites**

■ www.ancestrypaths.com is a free site with links to information you might not find elsewhere. On the homepage, they list new resources (lately, early Virginia immigrants, New York loyalists, New Jersey loyalists, Underground Railroad operators and more). Or, click on "Site Index" for a list of everything they have, which is very varied, from War of 1812 pension applications and Irish marriage records (1771-1812) to passport applications, and lots of old cookbooks dating back to 1732.

■ If your family members traveled back to the old country or just traveled for fun, there will be passport applications. These can include name, birthdate, birthplace, father's and/or spouses names and details, date and port of departure, destination and why they are traveling, years lived here, length of time they will be abroad, occupation, physical descriptions and, beginning at the end of 1914, a photograph. See them for free at familysearch.org and on paid sites Ancestry and Find My Past.

■ Each year, the National Archives has a Genealogy Fair, an educational event broadcast live on YouTube. It was in May/June last year and the topic was "Public Service: Military & Civilian." In 2022, the topic was the "1950 Census." But, you can access the sessions anytime through their website at <https://www.archives.gov/calendar/genealogy-series>. The availability goes back to 2013 and includes videos, presentation slides and handouts.

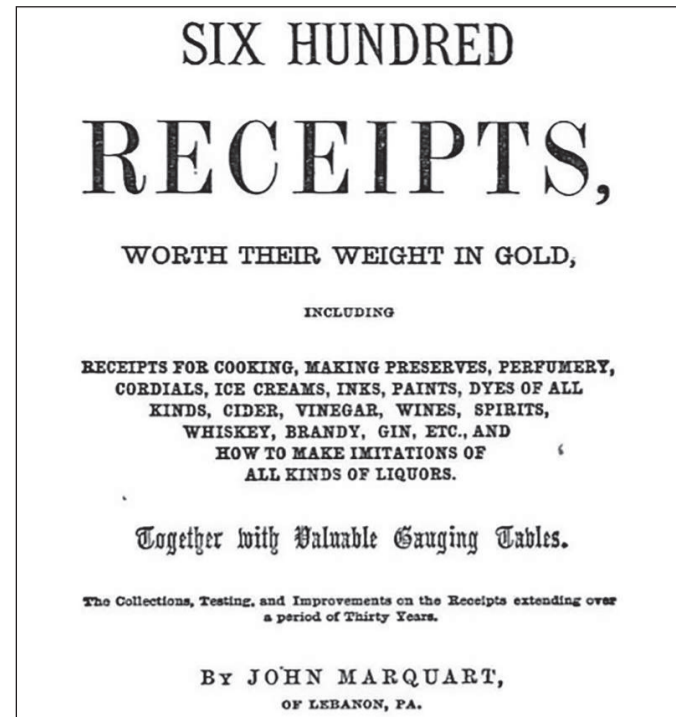
**Aid future genealogists**

Below are a few tips that will help your descendants continue to do good research on your family tree.

■ Label your photo collection. There's nothing worse than inheriting a box of great photographs with no identifying information. Enclose old photographs in archival sleeves (they are acid-free) and write information on the outside of the sleeves. Don't write on photographs or use paperclips or other metal attachments. Don't use those "magnetic" or self-adhesive albums. If you like an album, get archival quality pages and covers and use photo corners to attach pictures to the pages.

■ Because of the popularity of scrapbooking, there are lots of archival materials available at office supply stores and at Michael's, including archival papers, pens and all types of envelopes and files that are acid-free.

■ Donate. If you inherited old papers, photographs or diaries and don't want them, call



The Ancestry Paths website has a lot of old cookbooks.

your local historical society or the historical society where the family lived. In most cases, they would love to add these items to their collections. And, the New England Historic Genealogical Society Library in Boston will gladly accept old family Bibles and published genealogies.

■ When submitting information for births, weddings, engagements and obituaries to newspapers, include full names (and the maiden name of married women). Middle names can help searchers differentiate between all the Smiths, Russos and Sousas out there.

■ Share. If you have a family tree or a genealogy completed by an earlier family member, consider putting it on the LDS website and other sharing websites where others can find it and perhaps add to it. The same with any DNA results. Post them on any website that will allow it.

■ This might seem macabre, but write your own obituary — and do it now. I update mine every couple of years. When someone dies, especially someone in advanced years, the people who write the obituary might not have accurate facts, especially about the deceased's early years. It's actually more fun than it sounds. Include your name, date and place of birth, parents' names, spouse, children, siblings, where you went to school, place of employment, clubs and organizations you belong to, honors worthy of mention and anything else you consider pertinent. Your loved ones will appreciate it, too. Tell a family member where they can find it or provide them with a copy.

**ROOTY TOOTY Extravaganza**  
The fan favorite is back with more choices than ever

**Create your own ROOTY TOOTY COMBO**

- Choose your griddle fave
  - 2 buttermilk pancakes
  - 1 golden-brown Belgian waffle
  - 1 slice of Thick 'N Fluffy French Toast
  - 2 thin, delicate French-style crepes
- Top it off with a fruity flavor
  - 4 delicious fruit toppings to choose from
- Complete your combo
  - 2 eggs your way with choice of 2 hickory-smoked bacon strips or 2 pork sausage links

**ihop** Locally and family owned & operated

SUN-THURS 7AM-10PM • FRI & SAT 7 AM-MIDNIGHT

75 Highland Ave. East Providence, RI  
622 George Washington Hwy. Lincoln, RI  
159 West Main Rd. Middletown, RI  
47 Faunce Corner Rd. North Dartmouth, MA

**ihop.com**

**PanCoin Rewards Program**

**THE PERFECT VENUE FOR ANY OCCASION**

**Make your Valentine's Day Reservations now**

**MADEIRA RESTAURANT**

ESTABLISHED 1987

Open for dine-in & curbside take out  
431-1322 • [madeirarestaurant.com](http://madeirarestaurant.com)  
Check our Facebook page for weekly offerings

**Visit Our New Self-Serve Dog Wash**

**PET FOODS PLUS PET SUPPLIES**

**\$5 OFF ANY PURCHASE OF \$30 OR MORE**

FREE Same Day Delivery on orders of \$35 or more

IN STORE OR ONLINE WITH THIS COUPON PROMO CODE EB24

30 Gooding Ave, Bristol, RI 02809 • 401-253-2456  
ripetfoodsplusinc@gmail.com • [petfoods-plus.com](http://petfoods-plus.com)

**Experience Tradition-Inspired, Future-Driven Education**

**OPEN HOUSE**

Friday, December 8 • 8:15 a.m.  
Friday, January 26 • 8:15 a.m.

PRESCHOOL (AGE 3) – EIGHTH GRADE

To RSVP, visit [www.pennfield.org](http://www.pennfield.org) or call 401-849-4646.

BUS SERVICE PROVIDED FOR SELECT TOWNS  
FINANCIAL AID AVAILABLE

**The Pennfield School**

JOY • UNDERSTANDING • RESPECT

**Nutrisystem®**

**diet food stores**

**BUY LOCAL, SAVE 50% VS ONLINE\***

Breakfast, Lunch, Dinner and Snacks as low as \$9<sup>99</sup> per day  
Less Expensive than online\*  
No shipping • No waiting

**DARTMOUTH**  
127 Faunce Corner Rd. (next to Texas Roadhouse)  
508-999-1900  
**SEEKONK**  
1397 Fall River Ave, Rte. 6 • 508-336-2100

\*Our 4-week price with an 8-week commitment is 50% less than Nutrisystem's online 4-week one-time price as of 1/1/2024.



# STUDY HUMAN RESOURCES MANAGEMENT

## at UMass Dartmouth



Become a skilled professional at the internationally accredited Charlton College of Business. Our human resources management (HRM) program offers a state-of-the-art curriculum and faculty with extensive industry experience in HRM.



“

Being able to help others is all I ever want to do. Human resources management was the most direct route for me to achieve what I had in mind.”

- Christian Augat '24  
human resources management major



■ For more information: [umasd.edu/programs/hr-management](https://umasd.edu/programs/hr-management)



Charlton College of Business  
285 Old Westport Road, Dartmouth, MA 02747-2300  
ph: 508.999.8000  
■ [umasd.edu/charlton](https://umasd.edu/charlton)

# East Bay Real Estate

EASTBAYClassifieds.com

East Bay Real Estate January 10-11, 2023

## Stunning home overlooks the water in Portsmouth



This custom home overlooks the Sakonnet River in Portsmouth, with water views from every room.



A view of the kitchen.



A view of the living area, looking out toward the water.

This stunning waterfront home, located in the desirable Water Street neighborhood in Portsmouth, is truly an oasis on the river. The property features fully unobstructed waterfront views from every room in the house, with a gorgeous wrap around deck on the first floor that offers both sun and shade.

Completely updated in 2015, the kitchen offers quartz countertops and stainless steel appliances. There is gorgeous flooring throughout the entire home.

On the second floor, the primary bedroom offers a private balcony, a custom

stone shower, along with a copper claw-foot tub, creating a tranquil sanctuary any time of day. The second floor also hosts a guest room with waterfront views and a separate en suite with a custom stone shower and vanity.

The third floor of this home offers even more living space, with a common area at the top of the stairs, a third full bedroom, and a fourth room which would make a fantastic office or additional guest room.

Outside is a custom stone patio with hot tub and beautiful landscaping and gardens.

### By the numbers

\$1,400,000

3 beds

4 baths

2,661 sq. ft.

.16 acres

401-935-0762,

Shelley Andrade,

Century 21 Topsail



The home has a private balcony off the primary bedroom, a custom stone patio, as well as this wraparound porch.

### STEPS TO DOWNTOWN



**BRISTOL** 2 bed 1 bath 997 SF  
Bright, sunny 2nd FL unit w/ private entrance, large living room, hardwoods, walk-in closet!  
**LORI GARDINER 401-265-2594**

### NEW LISTING



**BRISTOL** \$499,900  
3 bed 1 bath 1,232 SF  
Adorable ranch with a nice layout and centrally located!  
**TRACEY MULVEY 401-835-8502**

### PENDING



**RUMFORD**  
3 bed 1.5 bath 1,711 SF  
Beautiful colonial featuring hardwoods, eat in KIT, SS appl., FP, central A/C, garage, park-like grounds. **JEAN CLARKE 401-374-5039**

### UNDER CONTRACT



**SEEKONK**  
3 bed 1.5 bath 1,933 SF  
Oversized KIT, hardwoods, FP, corner lot, partially finished basement, 2 car garage. **MISSIE ROSE 508-826-9966**

### LARGE COLONIAL



**WARWICK** \$524,900, 4 bed 2.5 bath 3,028 SF, Cedar Tree Point. SS appl, 2 dishwashers, large island & pantry! 4 car garage, beach access. **MISSIE ROSE 508-826-9966**

### SOLD



**EAST PROVIDENCE**  
3 bed 2.5 bath 2,109 SF  
Charm and character! Updated KIT, SS appl., double living room, oak flooring, 2 car garage. **MICHELLE CARTWRIGHT 401-663-5677**

### PENDING



**BRISTOL** 4 bed 2.5 bath 2,496 SF, Beautiful colonial located in the desirable neighborhood of Elm Farm! Granite, hardwoods, SS appl. **CATHY SOUSA 401-474-8306**

### PENDING



**BRISTOL**  
4 bed 3 bath 2,737 SF  
Spacious Colonial w/ hardwoods, FP. Lower level incl KIT, Family room, laundry. Private yard. **CATHY SOUSA 401-474-8306**



**RE/MAX**

**RIVER'S EDGE**  
SERVING RI & MA

Your Local Experts Guiding You Home

BRISTOL  
401-254-1776

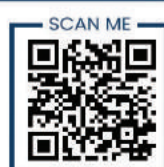
BARRINGTON  
401-245-2000

EAST PROVIDENCE  
401-433-5100

[riversedgeri.com](http://riversedgeri.com)

EXPERIENCE MATTERS  
IN TODAY'S MARKET

Our expert guidance, powerful brand, local market knowledge and skill will make your real estate dream a reality.



Your home may be worth more than you think.

Scan our QR code to get in touch with one of our many talented REALTORS®.





## TRACEY A. MULVEY

REALTOR® ABR & PSA

Licensed in RI, MA and Florida

401-835-8502



*I am honored to be the  
Top Producing Realtor —  
Bristol, RI 2023!*

*Thankful to my amazing clients  
and incredible business partners.*

- RE/MAX Platinum Club & Hall of Fame
- Platinum Sales GPBOR Circle of Excellence
- RI MONTHLY Professional Excellence Award
- Five-Star Professional Award
- Children's Hospital Miracle Agent



Please visit my website: [TraceyMulvey.com](http://TraceyMulvey.com)



3948 Main Road  
Tiverton Four Corners  
401.624.8469 • [info@tlholland.com](mailto:info@tlholland.com)  
[www.tlholland.com](http://www.tlholland.com)



**193 Russell Drive, Tiverton \$439,000**  
Great N Tiverton Home 3 BR, 2 BA, Central AC, Generator, 2 Fireplaces and Attached Garage.



**2139 Main Road, Tiverton \$2,300,000**  
Waterfront - Unique opportunity. Circa late 1800's. Formerly the Bridgeport Block/Manchester Seafood's site. Partially renovated 9,000 sq. ft. building. Formerly approved for Hotel/Hospitality usage.



**23 Teaberry Drive, Tiverton \$739,000**  
Winterberry Woods in South Tiverton - Well maintained 2200+/- SF Colonial. 3 BR, 2.5 BA set on 1.94 acres. Quiet location near Weetamoo Woods conservation land.



**0 Riverside Dr., Tiverton \$275,000**  
Waterview - nicely elevated lot across from Sakonnet River with great sunset views. Cleared and surveyed. Gas, water and sewer available at street.



Kristin Silveira  
401.835.0553



Carol Goyette  
401.855.1220



Deb Plant  
Broker, Owner  
401.451.8293



Samantha Plant  
401.743.7172



Carol Guimond  
401.418.0462



**HEARTH & HARBOR**  
REALTY

*Unparalleled Service, Local Expertise*

1741 MAIN ROAD, TIVERTON, RI  
401.816.5187 • [HEARTHANDHARBORREALTY.COM](http://HEARTHANDHARBORREALTY.COM)



Adam Dion  
401.345.6176



Renee Durost  
401.439.0866



Joanna Krystman  
401.263.6550



Gustave  
White

**Sotheby's**  
INTERNATIONAL REALTY

[GustaveWhite.com](http://GustaveWhite.com)

Tiverton: 3848 Main Road, 2nd Fl | 401.816.4060  
Newport: 37 Bellevue Avenue | 401.849.3000

BARRINGTON, RHODE ISLAND



NEW LISTING

**Barrington Beach \$2,995,000**  
Panoramic Water Views / Custom 4-Bed Single-Level  
Dina Karousos - 401.451.6461 | Nicki Lucenti - 401.439.9581

TIVERTON, RHODE ISLAND



PENDING

**Villages on Mt. Hope Bay \$1,595,000**  
Pristine End-Unit w/Front Row Bay Views  
Bridget Torrey - 401.575.6522

PORTSMOUTH, RHODE ISLAND



**Tower at Aquidneck Club \$995,000**  
Exceptional 2-Bed/3-Bath w/Private Cabana and Water Views  
Kim Fleming - 401.935.9075

PORTSMOUTH, RHODE ISLAND



**McCorrie Beach \$949,000**  
Stunning Water Views from Remodeled Ranch  
Jessica Chase - 401.864.3596

TIVERTON, RHODE ISLAND



NEW LISTING

**Bulgarmarsh \$489,000**  
2-Bedroom Cottage w/Outbuildings on 10-Acre Parcel  
Mike Sweeney - 401.862.0164

PORTSMOUTH, RHODE ISLAND



LAND

**Patriots Park \$399,000**  
Subdivision Potential - 1.6 Acre Lot w/Stone Walls & Curb Cuts  
Dina Karousos - 401.451.6461 | Nicki Lucenti - 401.439.9581



*"I Value Relationships Over Transactions."*

**ROMANO**  
REALTY GROUP

Your Neighbor and Real Estate Market Expert

Matt Romano • 401-743-2210



Scan to view all my  
★★★★★  
Reviews!



Wondering what your home is worth in this Market?

Reach out for a Complimentary Market Analysis of your property TODAY!



Moving you for over 25 years  
30 Child Street, Warren, RI

Roseann Dugan ABR, SRES  
Sales Manager  
401.378.8451  
myagentroseann@gmail.com  
www.RoseannDugan.com  
OFFICE: 401-246-1100



**Real Estate**

**Home Repair Loans**

**CHURCH COMMUNITY HOUSING:** 0% & 3% Home repair loans & Homebuyer training classes 401-846-5114

**Homes For Sale**

**Barrington:** Looking to Sell? Your Home May Be Worth More Than You Think! Let our Friendly & Knowledgeable Agents Help! Call RE/MAX River's Edge 401-245-2000 for a FREE Home Evaluation! riversedgeri.com

**Bristol:** First Time Home Buyers, Downsizing, or Searching for your Dream Home? Our Agents can help you through the process every step of the way! Call RE/MAX River's Edge 401-254-1776 bristolriversedgeri.com

**East Providence/Riverside/Rumford:** Looking to buy or sell a home? Knowledge is key! Let our experienced Agents guide

you through the entire process! Call RE/MAX River's Edge 401-433-5100 riversedgeri.com

**Tiverton:** Great N. Tiverton home, 3 BR, 2 BA, Central AC, Generator, 2 Fireplaces and Attached Garage \$439,000. T.L. Holland Real Estate 401-624-8469

**Pawtucket:** \$520,000 2 bd, 1 bath 3 family all nicely done and in excellent condition. A MUST SEE! Newer heating systems and hot water heaters. CANDACE CALLY 970-470-3666

**Land For Sale**

**Tiverton:** Waterview - nicely elevated lot across from Sakonnet River with great sunset views. Cleared and surveyed. Gas, water and sewer available at street \$275,000. T.L. Holland Real Estate 401-624-8469

**Commercial For Sale**

**Tiverton:** Waterfront - Unique opportunity. Circa late 1800's. Formerly the Bridgeport Block/Manchester Seafood's site

\$2,300,000. T.L. Holland Real Estate 401-624-8469

**East Providence:** \$475,000 Commercial/Business, high traffic and convenient area! This space is perfect for multiple offices w/ hard wood floors, A/C, gas heat. PATTY BAIN 401-965-4822

**Apartment Rental**

**WESTPORT:** Year Round Apt For Rent. Yr Rd Apt Westport Pt 1 bdrm 2nd fl \$1800/m + utils, no pets, off street parking references required 508-951-9756

**RIVERSIDE: DUPLEX FOR RENT** Waterview, 2 beds, 1 baths, laundry, parking, large yard, 2 decks, all new appliances, suitable for 2 adults. \$2400 401-481-1041

**BARRINGTON:** Apartment for rent. Recently renovated, 193 Sowams Road. 3 beds, large bath, appliances, hardwood floors, parking, 2nd floor \$2100/month 401-265-6500

**Homes For Rent**

**TIVERTON:** Home for rent. 3 bed home 2 full baths, country setting, stove, refrig, washer, dryer 401-641-4524

**Commercial Rental**

**Tiverton:** Space for lease within med spa. Single room with sink. \$1,000/month (includes utilities). T.L. Holland Real Estate 401-624-846

**Office Space**

**Office space for rent.** Located in the Commons, Little Compton Parking on site - \$700.00/month plus electric Call 401-624-6613 to inquire

**BARRINGTON:** Professional office space for lease; 1560 sq ft, 755 sq ft, Centrally located with off street parking; ideal for medical; chiropractor; attorney; accountant; insurance; real estate; etc. 401-440-1725

**BRISTOL:** Professional office space for lease; Quiet, 1,200 sq. ft., 7 rooms (5 offices, reception & waiting rooms), shared utilities, off-street parking. Call (401) 253-3190 weekdays

**Garage Rental**

**WARREN:** 2 bay garage with single automatic door opener, plus workbench and storage areas. Private dry space, easily accessed in central business area and town hall. \$400 month with references, Call Barry 203-253-0360

**Hall Rental**

**EAST PROVIDENCE:** 1 and 2 bed, appliances, utilities, laundry and parking, bus line. No pets. From \$1250/month. 401-286-1920. 401-438-8137



**April Lawrence Daquay**  
RI Broker  
CBR, GRI, SRES



P.O. Box 66  
East Main Road  
Portsmouth, RI 02871

(508) 496-3587  
email: adaquay@gmail.com

Mott & Chace

**Sotheby's**  
INTERNATIONAL REALTY



Assisting buyers and sellers for 40 years.

I donate 5% of my commissions, in my clients' names, to the Transition Fund at the Providence Veterans Facility, to help homeless veterans transition to permanent housing.



Karen Rossi, Sales Associate  
401-258-0209 | karen.rossi@mottandchace.com

Mary Jo Favares  
BUYING OR SELLING a home?



LET'S WORK TOGETHER! PUT MY EXPERTISE TO WORK FOR YOU.

**CENTURY 21**  
Topsail Realty

401-297-1399  
MJTAVARES@C21BRISTOL.COM



A SIGN OF SUCCESS AND A NAME YOU CAN TRUST!

Helping families buy & sell their homes since 1975

The experience makes the difference.

Attention Homeowners... We Need Listings!

Are you wondering what your property is worth in today's market? Call Mateus Realty today for a free market analysis!

Mateus Realty is a family owned and operated agency with a personal touch. We speak Portuguese & Spanish!

CALL 401-434-8399

582 Warren Avenue, East Providence, RI 02914  
mateusrealty@gmail.com • Fax 401-435-3401

MateusRealty.net



LOOKING FOR A REAL ESTATE AGENT?

CALL KEN ASCOLI

Let me help you buy or sell your home. Schedule your appointment to get a complimentary market evaluation today.

401-323-5509  
kascoli@c21bristol.com

**CENTURY 21**  
Topsail Realty

**CATHERINE SOUSA**  
Your Local Real Estate Expert



#1 realtor in Bristol and Warren 2021-2022



423 Hope St. Bristol, RI



RANKED #1 Top Producing RE/MAX Realtor in Rhode Island

Let me help make your real estate needs a breeze



401-474-8306 • cqsousa62@gmail.com  
cathysousaREMAX.com

# Open Houses This Week

ADDRESS	DAY	TIME	STYLE	BEDS	BATHS	PRICE	BROKER	AGENT	PHONE
<b>EAST PROVIDENCE</b>									
147 Blanding Ave.	Sunday, Jan. 14	11 am-12:30 pm	Other	3	1.5	\$370,000	RE/MAX River's Edge	Lori Gardiner	401-265-2594
<b>WARWICK</b>									
727 Oakland Beach Ave.	Saturday, Jan. 13	10-11:30 am	Bungalow	4	2	\$384,999	RE/MAX River's Edge	Brooke Buckett	401-523-8596

# Real Estate Transactions

ADDRESS	BUYERS	SELLERS	SALE PRICE
<b>BARRINGTON</b>			
3 Roberta Dr	Frank and Adrienne Scharf	Bryan J. McLane	\$525,000
233 Waseca Ave	Vetley Barrington LLC	Lucy Dog LLC	\$355,000
Mayfield Rd	Alfred Almeida	Mario George and Hogar Hispano Inc.	\$340,000
<b>BRISTOL</b>			
18 Waterman St	Azure Richmond and Andrew Varela	Mariana P. Aguiar	\$599,900
66 Perry St	Julia and Jacob Bodah	J G & Maria J. Pereira I.R.T. and Joseph Pereira	\$450,000
7 Knowlton Ct	AG Construction Inc.	1202 Hope Street Invs. LLC	\$1,100,000
<b>EAST PROVIDENCE</b>			
57-59 School St	Kyle Bell	Cynthia A. Macchioni	\$350,000
25 Interlocken Rd	A. D. Montenegro Rosero	Jeannette R. Hagerty T.	\$450,000
129 Shore Rd	Waterview Invest LLC	Mary Lasalle Est. and Ronald Lasalle	\$426,000
130 Anson Dr	Helder Reis and Filomean Dagraca	Liane M. Fleury	\$380,000
693 N Broadway	Yves and Laurent Mukanya	Joseph Knaub and Katelyn Nolan	\$460,000
65 Roger Williams Ave	Alpha Hldg LLC	John and Susan Staniunas	\$255,000
21 Gerald St	Luis and Jeffrey Mateus	Joseph Paniccia and Catherine Dwyer	\$350,000
20 Walnut St	Chen Chen and Feng Lin	Helen Clancy	\$570,000
<b>PORTSMOUTH</b>			
51 Arrowhead Ln	Prestige Worldwide Invs L.	Joyce M. Connors	\$390,000
1184 E Main Rd	Looking Upwards Inc.	Visiting Nurse Svcs Of N.E.	\$2,900,000
King Phillip St	Kyle and Megan Ouellette	Scott C. Burgo	\$80,000
Coreys Ct	Andrew and Kathleen Turezyn	Mary Soares Est. and Joyce Rolfe	\$220,000
Coreys Ct	Court Properties LLC	Andrew and Kathleen Turezyn	\$325,000
Prescott Point Condo #6-21	Scot Hallberg	Prescott Point LLC	\$540,000
Prescott Point Condo #6-20	Thomas A. Santilli	Prescott Point LLC	\$540,000
Prescott Point Condo #6-22	Peter A. Santilli	Prescott Point LLC	\$540,000
<b>TIVERTON</b>			
144 Colonial Ave	Christopher and Nicole Lafontaine	Gregory F. Darmody	\$525,000
61 Leger Ln	Edward T. Brant	Peggy L. Burns	\$375,000
40 Ridgeside Ln	Katrina Velle and Robert Smith	Ralph and Laura Doliber	\$443,000
1881 Crandall Rd	Colton and Page Craig	Richard and Karen Cote	\$400,000
30 Blackbird Ct	Robert Janiesch and Susan Vanderhoof	Patricia A. Ferreira Est. and Melissa Ferreira	\$264,000
<b>WARREN</b>			
39 Sowamsett Ave	Atwood Prop LLC	Gilbert F. Rene	\$295,000
<b>WESTPORT</b>			
26 Tickle Rd	Cara and Ethan Grillo	Thomas J. McGarr Est.	\$550,000
8 Jeffries St	8 Jeffries St. Real Trust	Alphonso Petrasso and Ann Lewis	\$160,000
10 Adirondack Ln	Steven P. Hebert	Morgan Santos and Justin Raposo	\$520,000
7 Lenox Ave	Donald and Loryn Silva	John J. Reade	\$460,000
2 Amory Petty Way	David and Jessica Joynt	Scott Boyd and Wendy Wentworth-Boyd	\$650,000

**Property Transfers are available — and searchable — to subscribers at EastBayRI.com. Look under “Homes.”**



*has proudly joined...*



29 Meeting House Lane | Little Compton 401.649.1915 Renee.Welchman@LilaDelman.com

# East Bay Classifieds

EASTBAYClassifieds.com

January 10-11, 2023

## Items for Sale

### Estate Sales

### Americana Antique Auction

**EXCEPTIONAL WINTER  
ESTATES AUCTION!**  
Sunday, Jan. 28, 2024 • 11am  
LIVE PREVIEW IN REHOBOTH:  
JAN. 25TH TO 27TH (THURS/FRI/SAT.)  
FROM 10-4PM & SUNDAY FROM 9-11AM  
PHONE & ABSENTEE BIDS ACCEPTED  
**LIVE ANTIQUE AUCTION**  
~ LIVE BIDDING  
ONLINE BIDDING AVAILABLE

In-person sale in Rehoboth & Online via  
Liveauctioneers.com & Invaluable.com.  
Estate of Dr. Sheldon Kaplan of Warwick,  
RI & Batchelder of MA estate plus other  
fine curated items from NE homes.

Ed Tessier, Jr., Auctioneer  
380 Winthrop St., Rehoboth, MA  
**For more info visit:**  
[americana-auction.com](http://americana-auction.com)  
**For info or consignment**  
call 508-771-1722

## Finds Under \$50

8000 BTU AC: Nantucket model  
NB, 3 fan speed, good condition,  
must pick up \$49 401-253- 5223

## Antiques For Sale



### EAST BAY CONSIGNMENT

**Quality Used Furniture  
& Home Decor**

**Consignments Wanted  
We Pick Up**

Call Ruth 401-289-2246

656 Metacom Ave.

Warren, RI

[eastbayconsignment.com](http://eastbayconsignment.com)

Tuesday-Saturday 10-5

Sunday 11-4

## New Auto Dealers

**BRISTOL TOYOTA:** Toyota-Sci-  
on. Sales, Service, Body Shop.  
[www.bristoltoyota.com](http://www.bristoltoyota.com), 2283  
Grand Army Highway (Rt. 6),  
Swansea, MA 401-253-2100.

## Motorcycles

**REACTION CYCLE:** Motorcycle  
services. making old bikes, new  
since 1976 401-266-1007 Jake  
Cady Portsmouth RI

## Auto Body Repair

### R.D.M. Mercedes Inc.

Specializing in Mercedes Benz  
Service and repair



R.D. Mulveny Mercedes  
Benz Factory Trained Tech

Call or text 401-602-8829

**AUTOS WANTED:** Buying cars,  
trucks, motorcycles, boats in  
need of repairs. Paying \$500 and  
up for cars. Highest prices paid.  
401-499-3258

**CLASSIC CARS WANTED.**  
Looking for most any car or truck  
American or European made be-  
fore 1980 .consider any condition  
from restored to Wreck.Will pay  
a generous finders fee if I buy a  
car you bring to my attention.Can  
also Help value Collections or  
single cars to help settle estates  
having been licensed in the busi-  
ness for 44 years.What do you  
have? Lets talk, please call Mark  
at 401 261 5748 or 508 379 0729



## Employment

### Help Wanted

**AUTO BODY TECHNICIAN:** At  
least 5 years' experience in the  
auto body industry. · Have your  
own tools. · Looking for a De-  
pendable technician that is orga-  
nized, detail oriented, neat & can  
manage the workload. · Must be  
accustomed to working at a  
steady pace shop & produce top  
quality work. · Punctual & Reliable  
Attendance expected. · Must  
have good communication skills  
with the managers & other em-  
ployees. · Also, looking for a de-  
tailer & prepper. Looking for Full  
Time Monday to Friday, 8:00 AM  
to 4:30 PM Pay Rate: · \$20.00 to  
\$30.00 per hour Benefits: · Health  
Insurance · Paid time Off  
Brougham Motors At: 508-678-  
2276

Advertise your  
Help Wanted ad  
here in the  
**East Bay  
Classifieds,**  
a great way to  
reach an  
affluent  
marketplace.

Call  
401-253-6000

## Home Improvement

### Basement Waterproofing

### Brilliant Basement Waterproofing, LLC®

Over 36 Years Combined Experience  
Fully Transferable Written  
Lifetime Guarantee\*, Sump Pumps,  
Pumps Eliminated in Most Homes,  
Yard Drainage

\*written details available upon request

HIC. 0653192 · RI Lic. #43473  
CALL US

401-541-5985

[www.brilliantbasementwaterproofing.com](http://www.brilliantbasementwaterproofing.com)

## Contractors

**Andreozzi Const. Inc.** Interior  
Specialist and Project manage-  
ment. Kitchens, Bathrooms,  
Basements, Windows, Doors,  
and Interior Painting · Over 40  
years in business. Ma & RI li-  
censed 401-245-1650

## Electrical-Contractors



Stephen Richardson  
Barrington, RI

### MASTER ELECTRICIAN

Licensed in RI & MA

401-410-4002

508-212-9239

## Firewood & Stoves

**FIREWOOD: SEASONED PRE-  
MIUM HARDWOOD:** \$270 a cord,  
delivery fees may apply. Seekonk  
and Rehoboth Free delivery Call  
Charlie 401-219-9919 Discounts  
on 3 or 4 cord orders. Firewood  
bundles also available for busi-  
ness owners and homeowners.  
Call for a quote Delivery fees may  
apply

## Gutter Installations & Cleaning

**WAUGH & SONS** Painting, Car-  
pentry, Gutter Cleaning, Power  
Washing. Free proposals and In-  
sured. Reg. # 39679 401-433-  
9549

## Wanted To Buy

**USED RECORDS WANTED:**  
Round Again Records needs your  
used records, 45s, LPs, Cash  
paid! Providence 401-351-6292.

**WE BUY RECORDS AND STE-  
REO EQUIPMENT** In Your Ear  
makes house calls to pick-up  
your unwanted records. No col-  
lection too big or small! Cash  
paid! Warren 401-245-9840.

## Autos and Boats

### Wanted To Buy

**WANTED TO BUY:** Military Items  
& Souvenirs, Local Collector pays  
cash for your military antiques.  
Civil War-WWI-WWII-Korea-Viet-  
nam. Uniforms, Helmets, Patch-  
es, Medals, Daggers, Swords,  
Flags, Documents, Photographs,  
Gear, Ordinance, etc. 401-524-  
1622

## Autos Wanted

**JUNK CARS WANTED** Up to  
\$500 paid Call for free quote 401-  
895-7351

## CASH PAID FOR JUNK CARS WITH TOWING

Complete line of used  
auto parts, new sheet  
metal body parts,  
used tires & batteries

### JACK'S SALVAGE and Auto Parts

625 Metacom Ave.

Bristol

401-253-3478

## WANTED TO BUY Antiques & Collectibles

Coins - Costume Jewelry - Pocket & Wrist Watches - Military Items Lamps  
Furniture - Musical Items - Glassware & China - Old Tools  
Cast Iron Items - Paintings - Crocks & Jugs - Old Signs - Toys  
Photography - Knives - Trains - Hummels - Razors - Decoys  
Old Telephones - Nautical Items & SO MUCH MORE

Buying 1 Item or Complete Estates  
IN YOUR AREA WEEKLY

Harold S. Holmes, Auctioneer #1203  
601 Middle Road, Skowhegan, ME 04976  
207-474-8769 or Cell 207-474-1176 · [HaroldHolmes04976@gmail.com](mailto:HaroldHolmes04976@gmail.com)

**Classifieds  
Sell!**  
401-253-6000

## TOWN OF TIVERTON, RHODE ISLAND

### COMMUNITY EVENTS COORDINATOR FOR RECREATION & BEACHES COMMISSION

The Town of Tiverton, RI is accepting applications  
for the seasonal position of Community Events  
Coordinator for Tiverton's Recreation & Beaches  
Commission. Application and job description are  
posted on the town's website [www.tiverton.ri.gov](http://www.tiverton.ri.gov).

Salary for the position is \$800 per month.

Forward resume electronically to  
[adminassist@tiverton.ri.gov](mailto:adminassist@tiverton.ri.gov).

Application deadline is OPEN until  
position is filled.

*The Town of Tiverton is an equal opportunity employer.*

## TOWN OF TIVERTON, RHODE ISLAND

### SEEKING APPLICANTS FOR ASSISTANT TOWN PLANNER

The Town of Tiverton is currently seeking a qualified  
person to work in a full-time capacity as an Assistant  
Town Planner. This position is scheduled for 35 hours  
per week and is a non-union position. Application and  
job description are available on Tiverton's website  
[www.tiverton.ri.gov](http://www.tiverton.ri.gov).

Submit all applications, resumes, and references to  
Tiverton Personnel Board, PO Box 38, Tiverton, RI  
02878 marked ATTN: Assistant Town Planner,  
or via email to [tivertonpersonnel@tiverton.ri.gov](mailto:tivertonpersonnel@tiverton.ri.gov).  
Applications will be accepted until  
the position has been filled.

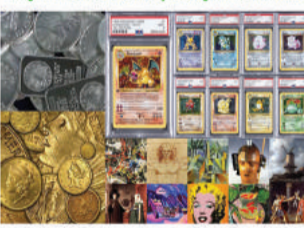
*Tiverton is an Affirmative Action/Equal Opportunity Employer*



[www.CleanSlateEstate.com](http://www.CleanSlateEstate.com) · (401) 640-9385  
We are looking for clients wanting  
to sell their small & large collections of the  
following items to earn some quick cash.  
Make some \$\$\$\$ from your years of  
collecting! Turn it into money you can use  
for Vacation, Bills, Hobby, etc.



**We Buy:**  
Small & Large Collections of Artwork,  
Baseball, Basketball, Football, and  
Pokémon Cards, Comics, Coins,  
Collectibles, Gold, Silver, Jewelry,  
Military Items, Stamps, Trains, Toys,  
Vehicles, Primitive Furniture, Late 1800's,  
High-End Mid-Century Designer Furniture



### Bill Lizotte Architectural Glass & Aluminum Inc.

"Over 40 years experience at your service"

- Windows
- Insulating Glass
- Frameless Shower Doors
- Glass Table Tops & Mirrors
- Commercial Doors & Hardware
- Storefronts
- Thermal Aluminum Windows

24 Hr Emergency Service  
401.641.2866

**Mention this ad and receive 10% OFF  
with a purchase of \$250 or more on  
materials. Use Code EBN2019**

401-383-9535

400 Wampanoag Trail • East Providence

**Handyman**

**FRED & JIMS HANDYMAN:** Services. All home improvements projects. Bathrooms and basements remodeled. Carpentry, Gutters cleaned, storm damage, pools repaired, free estimates, Insured. Reg #21299, 401-256-4465, 401-246-1517 no job too small

**RETIRED MASTER ELCTRI-CIAN:** Small jobs only. Free estimates 216-387-1691

**Home Improvements**

**Lighthouse Home Improvement LLC** We offer Residential and Commercial Higher quality service Interior and Exterior Painting, Plastering, Masonry, Tiles and Junk Removal (508) 840-2898(904)325-2808

**Landscape Materials**

**DARK, RICH LOAM:** Bark, mulch, sand and gravel. Call Swansea 508-672-4436 or 508-679-0772, after 5pm

**Landscaping**

**daSilva Landscaping & Construction LLC**

Concrete • Asphalt • Pavers  
Masonry • Retaining Walls  
Walkways • Driveways  
Hydroseed • Irrigation  
Drainage • Site-Work  
Excavating • Septic Systems  
15yd Dumpster Rentals  
*Licensed, Insured & Bonded*  
**774-365-7511**  
www.dasilvalandscaping.com

**COMPLETE LANDSCAPE MAINTENANCE**

**Painting**

**MR & MRS M's: Paper & Paint Perfectionists.** Thorough surface preparation. Top quality interior painting, paper hanging, Reg#5164, insured. Free estimates. Barrington 401-245-6454.

**Plumbing**

**BILL'S DIRECT PLUMBING & HEATING** – Boiler installations & service, hot water heaters. Plumbing repairs & installs. Bristol, RI. MP#3560 / PM#8519 Call Bill 401-369-0061

**Roof Repair & Cleaning**

**B.A.C. ROOFING: and Construction.** GAf certified residential and commercial roofing specialist. Quality workmanship done right the first time. Fully licensed and insured. Call for your free estimate. Financing Available. Bristol 401-413-4820

**RC ROOFING** CertainTeed Shingle Master Contractor specializing in all types of shingles and Flat roofing for residential applications. 30 Years of experience. Call Now for a free estimate. Rick Chaffee 401-227-8855 Fully insured RI Reg# 31588



**Roofing • Windows Siding • Doors • Gutters**

Master shingle applicators  
CertainTeed, GAF, and  
Owens Corning.  
Installation and Repair

24 years of experience with all insurances and knowledge

Protecting homeowners and businesses for the roof replacement or repairs.

Tabeley.com  
info@tabeleyconstruction.com  
**401-431-2816**

RI REG. #18045  
MA REG. #172793 -Member RI



**Storage**

**BARRINGTON SELF STORAGE:** Climate controlled (heat/air) and regular units, in many sizes. Secure facility, access 7 days/wk. NEW! mobile storage brought to your door. 65 Bay Spring Avenue Barrington 401-246-0552 www.barringtonselfstorageri.com

**Tree Service**



**ENNIS TREE**

**Kevin J. Ennis**  
Certified Arborist

Climbing Specialist  
Pruning and Removal

Serving RI & Southeast Ma  
Tiverton, RI • 401-835-6153  
RI License 642 MCA 102006



**Achin' Back Tree LLC**

Planting • Pruning • Removal  
Stump Grinding Services

**FREE ESTIMATES**  
ISA Certified Arborist  
Licensed & Insured

37 Easton Ave., Portsmouth, RI  
**774-240-1104**

**AMERICAN TREE WORKS**

Tree removal,  
tree trimming, stump  
grinding, fully  
licensed fully insured,  
workmens comp,  
free estimates

**BRISTOL**  
401-253-0187  
(cell) 401-573-6814

**TREE DOCTOR**

RI licensed Arborist, fully insured. Complete line of tree service. Free estimates. Senior citizen discount. We recycle all of our waste. 35 years experience.

**Ken Coelho  
Warren**  
401-245-6172

**Cleaning Services**

**T Magic Cleaning Services:** Residential, Commercial, move in, move out, post construction. tmagiccleaning@gmail.com 774-955-8647 Edylaine

**P.R. Housecleaning** Refresh your home with me ! 15+ experience Priscilla 718-607-8046

**LUCIANA'S CLEANING SERVICES:** residential and commercial, and construction, weekly, bi weekly, monthly, spring time cleaning, one time cleaning, deep clean, move in and out, fully insured, follow us on Instagram, airbnb and vrbo customers welcome, 774-320-0055

**MARY'S CLEANING SERVICE:** Residential and commercial. 15 yrs exp and free estimates. Good prices and good references. 508-642-4279.

**Financial Planning**

**FINANCIAL ADVISOR:** Are you about to retire? Or are you already retired? Looking for help making financial decisions? Call me. Al Wroblewski, CFP® Financial Advisor 401-240-0042

**Professional Services**

**Elderly Care**

**Health Care Equipment for Use at Home**



**independence**  
HomeHealthWares™

401.273.8888

Visit us at our new location  
2224 Pawtucket Avenue  
East Providence, RI 02914

**Pet Services**

**EAST BAY KENNELS:** Boarding, grooming, pet supplies, feed and quality service. Bristol 401-253-0082.



**10% OFF**  
Exam for  
Existing  
Clients  
WITH THIS AD.

944 East Main Road  
Portsmouth, RI

**401-683-0803**

portsmouthvetclinic.com

**Puppies are a lot of work!!**

Confused about how to safely socialize and train your puppy? We are here to help you teach your puppy to become the best social and well-mannered dog he can be!

Get started right away with flexible Puppy Kindergarten classes and multiple Puppy Socials each week for safe socialization and training!

Join our friendly community  
of dog lovers for fun and support!  
How can we help?

**poochpawsitive.com • 401-714-5652**

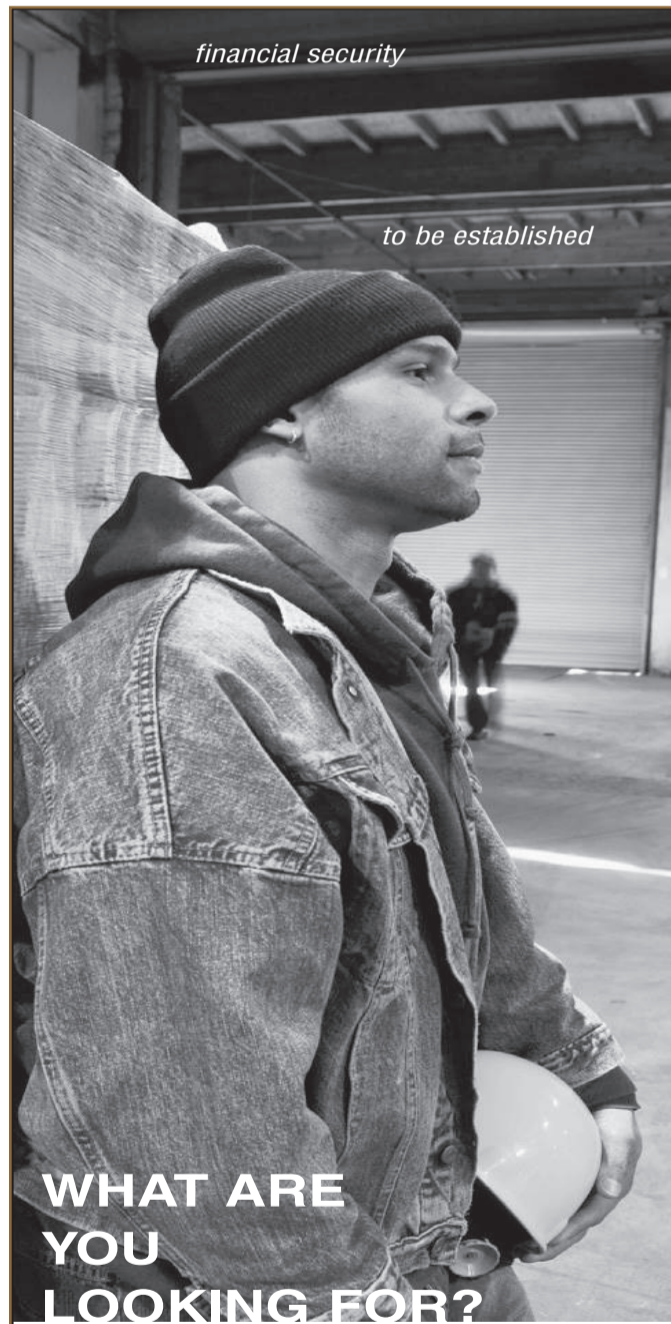
Located in East Providence, RI • Heidi Palmer McNeil, CTC, CPDT-KA

**Pooch Pawsitive**



Advertise your service here **East Bay Classifieds**, a great way to reach an affluent marketplace.

Call **401-253-1000** to place your ad today.



Find it at **Rijobs.com**. With companies from across Rhode Island posting their jobs at **Rijobs.com**, we're connecting employers and job seekers across the state. And since we update daily, you can expect to find the opportunity you want *fast*. Log onto **Rijobs.com** and find your perfect job today.



East Bay Classifieds is a participating affiliate in Rijobs.com.

get it **together.**



Specializing in residential and commercial roofing

- roofing (new, replacement, repairs)
- metal roofing • rubber roofing
- siding • downspouts
- flashing / re-flashing • chimneys
- and much more!

**Free Estimates Call (401) 297-9292**

Bristol, RI | Mon-Fri 8am-5pm • Sat 8am-12pm

www.qualityconstructionandroofing.com



Fully Licensed: #23723

Proudly serving  
the East Bay area for  
over 20 years

# Service Directory

**B.A.C.**  
**Roofing & Construction Inc.**  
*Roofing and Siding Specialists*

- New Roofs & Repairs • Rubber Roofing
- Chimney Repairs • Vinyl Siding
- Gutter Installations • Cedar Shingles

**Free Estimates**  
**401.413.4820 • Bristol, RI**

Insured **FINANCING AVAILABLE** Reg #22977

**J's**  
**JUNK**  
**REMOVAL**  
**(401) 524-6993**

DISCOVER VISA

**THREE BROTHERS**  
**PAINTING SERVICE**

- Interior/Exterior Painting
- Residential/Commercial
- Power Washing
- Bath/Basement Remodeling

**Free Estimates • Senior Discounts**  
**401-256-4465**  
 REG #21299

**J&B TILE**  
*"You'll be FLOORED by our work."*

Installation of Custom Zero Entry, Curbless Showers featuring Schluter, Systems, Stone, Glass and Porcelain Tiles

**508-326-8083 • www.myjbtile.com**

Free Estimates Fully Insured  
**Interior/Exterior Residential/Commercial**

**Levine Painting**  
*Prompt, Reliable, Quality Work*

Wallpaper Hanging • Power Washing • Staining

**401-253-4300 • 401-323-6100**

RI Reg. #7140 www.levinepainting.com

**Residential Heating Service**

- Servicing oil fired heating equipment
- Tune-up and emergency service
- Full installations-oil/gas-boilers, water heaters
- Family owned and operated
- Licensed and Insured

**24 HOUR EMERGENCY SERVICE**  
 Ray Sinclair (401) 919-9015

**GENERAC**

**AUTOMATIC STANDBY GENERATORS**

**Chris Electric, LTD**  
**847-2542**  
 Sales • Service & Installation • Electrical Services • Electrical Contractor  
 Factory Trained Technicians

**M & M GENERAL Contractor Inc.**

For all your home improvement needs, with 23 years of experience in Remodeling & New construction we do it all. Interior & exterior from rough to finish. Kitchens and Bathroom, Decks, Windows & Doors. Additions and new construction. Your satisfaction is our guaranty. Competitive, quality work done in a timely fashion. Reg# 24274 & Insured.

For a free estimate call Emmanuel Pimentel mmgc@cox.net.  
 Bristol (401) 253-2476

**RICHARD O'DONNELL PAINTING & REMODELING**

- Exterior and interior painting.
- Pressure washing, carpentry.
- Lead hazard reduction contractor
- Now spraying Kitchen Cabinets #LHR-0327

**25% OFF Interior Painting**  
 Call today for your home improvement solutions.  
**FREE written estimates.**  
**odonnellpainting.org**  
**Barrington 401-569-7353**  
 Insured | RI Reg# 29650 MA Reg#160901

**SUPERIOR COMFORT**  
 HEATING • COOLING • REFRIGERATION  
 GEOTHERMAL • HIGH EFFICIENCY SPECIALIST

*Providing solutions for ALL your comfort needs!*

CLIMATE MASTER TRANE A+ rating

(401) 396-9171 | superiorcomfortinc.com

**RS HOMES**  
**Professional Cleaning Services**

RESIDENTIAL & COMMERCIAL  
 Free Estimates • Flexible Schedules  
 Fully Insured, With 10 Years of Experience  
*We're happy to share superb referrals from our clients!*

**CALL US TODAY!**  
 508-472-3938 • stefanyfreitas@hotmail.com

**Have a Business?**  
 Advertise it here and reach over **60,000** readers!  
**Call today!**  
**401-253-6000**

**Looking for Some Good News?**

*We've got you covered!*

Subscribe Today for Print & Digital Access.

**Local News Is Just the Beginning**  
 Subscribe • Support • Advertise

**EastBay MEDIA GROUP**

1 Bradford Street | Bristol, RI  
 401-253-6000 | www.eastbayri.com

f i t

**Local news, Local impact**



"I've received many more phone calls, repeat customers, and positive brand awareness for my business!"

- Wayne Gablinske, Wayne Electric

*See how local advertising can boost your business, too!*

**Call our Sales Team today**  
**401-253-6000 • eastbayri.com**

**EastBay MEDIA GROUP**

BARRINGTON TIMES • BRISTOL PHOENIX • EAST PROVIDENCE POST  
 PORTSMOUTH TIMES • SAKONNET TIMES • WARREN TIMES-GAZETTE  
 WESTPORT SHORELINES • EAST BAY LIFE • EAST BAY CLASSIFIEDS  
 EASTBAYRI.COM

**Classifieds Sell!**

**401-253-6000**

**EASTBAYClassifieds.com**

Items for Sale

Items Under \$25	Items Under \$50	Items Under \$100	Items Under \$200
1. [Item description]	1. [Item description]	1. [Item description]	1. [Item description]
2. [Item description]	2. [Item description]	2. [Item description]	2. [Item description]
3. [Item description]	3. [Item description]	3. [Item description]	3. [Item description]
4. [Item description]	4. [Item description]	4. [Item description]	4. [Item description]
5. [Item description]	5. [Item description]	5. [Item description]	5. [Item description]
6. [Item description]	6. [Item description]	6. [Item description]	6. [Item description]
7. [Item description]	7. [Item description]	7. [Item description]	7. [Item description]
8. [Item description]	8. [Item description]	8. [Item description]	8. [Item description]
9. [Item description]	9. [Item description]	9. [Item description]	9. [Item description]
10. [Item description]	10. [Item description]	10. [Item description]	10. [Item description]
11. [Item description]	11. [Item description]	11. [Item description]	11. [Item description]
12. [Item description]	12. [Item description]	12. [Item description]	12. [Item description]
13. [Item description]	13. [Item description]	13. [Item description]	13. [Item description]
14. [Item description]	14. [Item description]	14. [Item description]	14. [Item description]
15. [Item description]	15. [Item description]	15. [Item description]	15. [Item description]
16. [Item description]	16. [Item description]	16. [Item description]	16. [Item description]
17. [Item description]	17. [Item description]	17. [Item description]	17. [Item description]
18. [Item description]	18. [Item description]	18. [Item description]	18. [Item description]
19. [Item description]	19. [Item description]	19. [Item description]	19. [Item description]
20. [Item description]	20. [Item description]	20. [Item description]	20. [Item description]

Yard Sales

Barrington	East Providence	Portsmouth	Bristol	Warren
1. [Item description]	1. [Item description]	1. [Item description]	1. [Item description]	1. [Item description]
2. [Item description]	2. [Item description]	2. [Item description]	2. [Item description]	2. [Item description]
3. [Item description]	3. [Item description]	3. [Item description]	3. [Item description]	3. [Item description]
4. [Item description]	4. [Item description]	4. [Item description]	4. [Item description]	4. [Item description]
5. [Item description]	5. [Item description]	5. [Item description]	5. [Item description]	5. [Item description]
6. [Item description]	6. [Item description]	6. [Item description]	6. [Item description]	6. [Item description]
7. [Item description]	7. [Item description]	7. [Item description]	7. [Item description]	7. [Item description]
8. [Item description]	8. [Item description]	8. [Item description]	8. [Item description]	8. [Item description]
9. [Item description]	9. [Item description]	9. [Item description]	9. [Item description]	9. [Item description]
10. [Item description]	10. [Item description]	10. [Item description]	10. [Item description]	10. [Item description]
11. [Item description]	11. [Item description]	11. [Item description]	11. [Item description]	11. [Item description]
12. [Item description]	12. [Item description]	12. [Item description]	12. [Item description]	12. [Item description]
13. [Item description]	13. [Item description]	13. [Item description]	13. [Item description]	13. [Item description]
14. [Item description]	14. [Item description]	14. [Item description]	14. [Item description]	14. [Item description]
15. [Item description]	15. [Item description]	15. [Item description]	15. [Item description]	15. [Item description]
16. [Item description]	16. [Item description]	16. [Item description]	16. [Item description]	16. [Item description]
17. [Item description]	17. [Item description]	17. [Item description]	17. [Item description]	17. [Item description]
18. [Item description]	18. [Item description]	18. [Item description]	18. [Item description]	18. [Item description]
19. [Item description]	19. [Item description]	19. [Item description]	19. [Item description]	19. [Item description]
20. [Item description]	20. [Item description]	20. [Item description]	20. [Item description]	20. [Item description]