

# STARKE-LIFE



Archive photo: Crosby Lake  
Credit: Joel Davis

POSTAL CUSTOMER

PRSTR STD  
U.S. POSTAGE  
PAID  
Orange Park, FL  
Permit #650

**North Florida Regional  
Chamber of Commerce**

*“Proudly Serving Bradford,  
Union & SW Clay Counties”*



**[www.NorthFloridaChamber.com](http://www.NorthFloridaChamber.com)**





water patrol



K-9 Unit



public safety drone



S.W.A.T.

PROUD TO SERVE!





# Citizens of Bradford County,

I am grateful for the trust of the Citizens of Bradford County. I have served the community I love for more than 36 years. I am currently serving in my fourth term as your sheriff. As Sheriff, I am entrusted with the responsibility of providing for the peace and safety of all citizens. I recognize the Badge of my Office as a symbol of public faith... faith that I will uphold my oath of office and maintain a strong understanding of my fundamental duty to serve mankind; safeguard lives and property; and to preserve, protect and defend the Constitution of the United States and the rights of the people I serve in this county. These are the duties for which I and the women and men of my Office take great pride and honor in being responsible.

I have the privilege of leading one of the premier law enforcement agencies in Florida. Over the years, many men and women have worked hard to develop the Bradford County Sheriff's Office into the professional, modern, and effective full-service law enforcement organization that it is today. We pledge to serve our community by protecting, educating, communicating and will continue to meet the challenges the future brings with training and enhancement of our skill set.

Our goal continues to be the pursuit of excellence to better serve and protect our citizens. Each year we compile the prior years' service statistics to include crime stats, calls received and type, the number and type of crimes and showcase the different departments within the Sheriff's Office as those we serve deserve



to know how their tax dollars are being spent. The Sheriff's Office Budget for 2023/2024 is approximately \$8.1 million dollars. The Sheriff's Office consists of Law Enforcement, Corrections, Court Security, Emergency Management, School Protection, County Wide Communications, Animal Control, Code Enforcement, Mapping/911 and Inmate work squads.

***Proud to Serve, your Sheriff I am,***

***Gordon Smith***







## North Florida Regional Chamber of Commerce

### Mission Statement:

Our mission is to give tourists a reason to visit, businesses a reason to locate, and citizens a reason to reside, work, and participate in our region of Florida.

### Board of Governors 2023

Chairman – Jeff Oody  
Chair Elect - Brad Smith  
Past Chair – Brad Bishop  
Treasurer – Chris Page

### Board Members

Board Members  
James Eison  
Steve Futch  
Rhonda Hamilton  
Scott Kornegay  
Justis Smith  
Denny Thompson  
Jennifer Whitehead

NFRCC Board of Governors meetings are held the 2nd Thursday of the month

### Staff

President / CEO - Pam Whittle, IOM  
Business Service - Susan (Becky) Norman

### Contact Us:

100 East Call Street • Starke, FL 32091  
www.northfloridachamber.com  
Like us on facebook NFRegionalChamber  
904-964-5278 (M – F)

# Welcome to the North Florida Region!

## Pam Whittle, Chamber President

Welcome to the North Florida Region, we at NFRCC work closely with multiple agencies to serve and support our local business community in Bradford, Union and SW Clay counties. We also welcome many new residents that relocate into our area. We have seen an insurgence of folks moving from the northwest recently who now call the North Florida Region home. This rural region of Florida still has available and affordable land that is very attractive to both residents and the business community.

As of June 30, 2023, the Bradford County Development Authority was dissolved by order of Governor Ron DeSantis. Fortunately another group has stepped up and are in the process of forming an economic organization the Northeast Florida Economic Development Corporation. This is very exciting as there is much growth currently in our region and plans for future expansion. The NEFEDC will work with the Chamber, city and county government

to continue planned and structured growth, that will allow our region to grow the way folks want to see growth. Infrastructure has long been a major hurdle in our region in the way of business growth. This deficit is now being addressed by several agencies and will allow those businesses that are wanted to move into our area.

The Chamber and the Downtown Merchants plan several activities for the community such as the Great Pumpkin Escape and Christmas on Call Street. Those are the major events we hope to continue to grow. The completion of road construction will allow the DTM and Chamber to bring in some new events for the spring a summer to help increase foot traffic and interest in the Historic Downtown area.

Just a few weeks past the Annual Bradford Strawberry Festival and the Chamber staff are already looking at next year's dates for the 27th Annual Strawberry Festival and getting vendor applications



prepared. This is a major event for the Chamber and our community bringing in many visitors from areas like Daytona, Jacksonville, Gainesville and Southern Georgia. We couldn't do it without the support of our Chamber board, BCSO Explorers, Fair Association, various wonderful sponsors, and a multitude of volunteers.

We continue to support our businesses with Ribbon Cuttings, After Hour events, and Grand Openings. These are the highlight of our work, when a new business allows us to share in the excitement and enthusiasm of joining our business community.

We hope you will come and visit our neck of the woods in beautiful North Florida.





Call or Text  
352-494-1829



**OVER \$14 Million  
SOLD in 2023**

**Multi-Year Multi-Million Dollar Producer**

**Welcome Home!**

**(352) 478-SOLD**

**MeLissa Pellerito**

[mpelleritorealtor@gmail.com](mailto:mpelleritorealtor@gmail.com)

275 S. Lawrence Blvd. Ste 1, Keystone Heights

Sometimes the grass  
**IS greener.**  
Welcome Home!



**Florida Homes**  
Realty & Mortgage



Community Involvement • First Time Home Buyers • Veterans • Investment  
Residential • Commercial Property • Land & Building • Retirement Homes



# Welcome to Bradford County

Bradford County is a rural community located in Northeast Florida. Bradford was founded as New River County in 1858 but was renamed Bradford County in 1861. The county has a population of 27,000 people and covers 294 square miles. Bradford County is home to the City of Starke, City of Lawtey, City of Hampton and the Town of Brooker with Starke being the county seat.

## Parks & Recreation

Welcome to the Bradford County Parks and Recreation page. Bradford County is home to five publicly accessible lakes and two wildlife management areas, with many opportunities for recreation on land and water.

## Lakes And Boat Ramp Locations

- Hampton Lake - West End of Southwest 101st Street, Hampton, FL 32044
- Sampson and Rowell Lakes - 14300 Southwest 75th Ave, Starke, FL 32091
- Little Lake Santa Fe - 3858 Southeast 20th Ave, Keystone Heights, FL 32656
- Santa Fe Lake - 42500 Northeast State Road 26, Melrose, FL 32666

## Parks

- Pleasant Grove Park - At the corner of Northwest County Road 229 and Northwest 177th Street, Starke, FL 32091
- Speedville Park - 879 Southeast 35th Street, Melrose, FL 32666
- Lincoln City Park - At the corner of Southeast 143rd Terrace and Southeast 44th Avenue, Starke, FL 32091

## Wildlife Management Areas

- Santa Fe Swamp Wildlife Management Area  
Southeast 11th Avenue, Starke, FL 32091  
(Approximately 1/2 Mile off State Road 100)

The Santa Fe Swamp Wildlife Management Area (WMA) consist of 7,272 acres and is open for fishing, wildlife viewing, horseback riding, hiking, and bicycling throughout the year. Children under the age of 16 are required to wear a helmet when horseback riding on public lands. Hunting of white-tailed deer, feral hog, turkey, gray squirrel, and eastern cottontail rabbit is allowed in this WMA during specified seasons with primitive weapons only (bow and arrow and muzzleloader).

- Raiford Wildlife Management Area  
Northwest County Road 125, Lawtey, FL 32058

Raiford WMA consists of 9,141 acres and is located along the New River in northwest Bradford County. The New River flows through the center of the WMA, and Olustee Creek (which branches off of the New River) flows through the eastern portion of the WMA. Much of the area is closed or in private ownership but the remaining portion of the area is open for hunting during specified seasons. Wild turkey, white-tailed deer, gray squirrel, eastern cottontail rabbit, gopher tortoise, raccoon, and red-tailed hawk are some of the wildlife species that can be found in the area.



The North Florida Regional Chamber of Commerce is a vital part of the ongoing growth that is taking place here in the Bradford County area. Your membership in the Chamber provides unparalleled opportunities to connect with peers, current and prospective clients, and partners up and down the supply chain, to keep communication lines open.

Further, the programs and events the Chamber supports, promotes, and is involved in provide extraordinary opportunities to grow needed networks and gain new insights to address the ever-changing challenges facing all of us in business today. By working together as Chamber members, we have a much stronger voice with our elected leaders as they contemplate policy revisions and new rules and regulations that create greater certainty and an improved environment for business in Bradford County.

The Chamber's involvement in promoting the Rural County Days Event in Tallahassee over the last few years, has helped the Chambers and Local Business connect and provide Legislators with the uniqueness of local Businesses, their talent influence in the local community, promoting e-commerce, developing trends and patterns that are unique to Rural communities.

We support the North Florida Regional Chamber, membership and residents in Bradford County and encourage you all to shop locally and support your community. We represent you in Tallahassee from both the House of Representatives and Florida Senate and your concerns, ideas and opportunities are something we greatly value.



**Robert Charles "Chuck"  
Brannan III**

Member of the Florida House  
of Representatives  
Republican  
Representing District 10  
222 The Capitol  
402 South Monroe Street  
Tallahassee, FL 32399-1300  
Office Phone: 850-717-5010



**Jennifer Bradley**  
Member of the Florida Senate  
Republican

Representing District 5  
Tallahassee Office  
324 Senate Building  
404 South Monroe Street  
Tallahassee, FL 32399-1100  
Office Phone: 850-487-5005



**The Big Guys Have Nothin' On Us...**  
get all the convenient services you need right here.



**Lake Butler**  
255 SE 6th St.  
Lake Butler, FL 32054  
**(386) 496-3333**



**Starke**  
811 S Walnut St.  
Starke, FL 32091  
**(904) 964-7830**



**Interlachen**  
1120 State Road 20  
Interlachen, FL 32148  
**(386) 684-6154**  
NEW HOURS (Interlachen)  
Drive Thru: Monday - Friday 8am-4pm  
Lobby hours by appointment only.  
Closed Saturday

 **DLPbank**<sup>TM</sup>  
[www.dlp.bank.com](http://www.dlp.bank.com)

Member  
**FDIC**

Lobby Hours: Monday - Thursday 9am - 4pm • Friday 9am - 6pm • Saturday Closed  
Drive Thru Hours: Monday - Wednesday 7am - 4pm • Thursday - Friday 7am - 6pm • Saturday 8am - 12pm





# • Community Events •

## January

MLK Day

## February

American Values Dinner (Boy Scouts)

1st Saturday of the month – North Florida Regional

Chamber of Commerce Annual Meeting • Miss Bradford Fest Pageant

The Florida Challenge at Bradford Sportsmens Farm

Bradford-Union Strawberry Pageant

## March

Bradford Agricultural Fair • North Florida Outdoor Expo

Lake Butler Rotary Annual Luau Fundraiser • Bradford Strawberry Festival

## April

Rotary Beast Feast • Union Co. Livestock Assoc. Agricultural Fair

Rural Counties Day in Tallahassee on the Capitol

Starke Kiwanis Annual Golf Tournament

Florida State Sporting Clays Championships • Easter

## May

05 Cinco De Mayo • Mother's Day • Memorial Day

## June

14th Flag Day • Father's Day • 19th Juneteenth

## July

4th Starke Splash n Bash • Lake Butler Celebration on the Lake

Keystone Heights Our Country Day

## August

Barnyard Fantasy Football League Annual BBQ Cook-off

## September

Labor Day

## October

Columbus Day • Altrusa Gala • Great Pumpkin Escape

## November

Veteran's Day • Krawl'n for the Fallen • Thanksgiving

Shop Small Saturday

Miss Winterfest Pageant

## December

Christmas on Call Street • Christmas Parades • Shop With A Cop

## Welcome to the Bradford Agricultural Center

Home to the annual BRADFORD Agricultural Fair and annual Strawberry Festival



Check our websites for dates & more information:

[www.BradfordCountyFair.com](http://www.BradfordCountyFair.com)

[www.BradfordCountyStrawberryFesival.com](http://www.BradfordCountyStrawberryFesival.com)



2300 North Temple Ave • Starke, FL 32091 • 904-964-5252

[Manager@BradfordCountyFair.com](mailto:Manager@BradfordCountyFair.com)



# STARKE-LIFE

Starke Life is Published Annually by the North Florida Regional Chamber of Commerce in Partnership with the Keystone Heights Herald and the Clay Today Newspaper. For Chamber information call 904-964-5278. To Advertise in the 2024 Directory call 352-502-9700. #itsbetterinBradford

## Table of Contents

Bradford County Sheriff's Office _____	2	Call Street Historic District _____	18
Welcome Letter Chamber President _____	4	FunPoint Restaurant and Arcade _____	22
Bradford County Information _____	6	Florida International Rally & Motorsports _____	24
Community Events _____	8	Camp Blanding Museum _____	26
Relocation Guide _____	10	Kingsley Lake _____	29
Bradford County Manager, Commissioners & Staff _____	11-13	NE Florida Economic Development Corp _____	31
City of Starke _____	15	Things to do in Bradford County _____	32
Guide to Historic Starke _____	16	Chamber Business of the Year _____	34
Bradford County's UF Extension Office _____	17	Chamber Humanitarians of the Year _____	34, 35
		Membership Directory _____	36-39



## NORTH FLORIDA TECHNICAL COLLEGE

ADULT EDUCATION  
 COMMERCIAL VEHICLE DRIVING  
 NURSING ASSISTANT LONG TERM CARE (C.N.A.)  
 FULL TIME PRACTICAL NURSE • PART TIME PRACTICAL NURSE  
 WELDING TECHNOLOGY • WELDING TECHNOLOGY ADVANCED

Administrative Office • 904-966-6764  
 Student Services Office • 904-966-6785  
 609 N. Orange St., Starke FL 32091

[www.nftc.edu](http://www.nftc.edu)

FOR A FUTURE THAT WORKS



# Relocation

## North Florida Chamber

*Pam Whittle*  
100 East Call Street  
Starke, FL 32091  
Phone: 904-964-5278  
Fax: 904-964-2863  
www.northfloridachamber.com

## Utility Companies Information

### Electric Companies

City of Starke  
(904) 964-5027  
Florida Power & Light  
(800) 851-9402  
Clay Electric  
(352) 473-8000

### Gas Companies

City of Starke - (904) 964-7776  
Sawyer Gas - (352) 468-1500

### Phone Companies

Century Link - (888) 723-8010

### Water & Sewer Companies

Suwannee River Water Management  
District - (800) 226-1066 or  
(386) 362-1001  
City of Starke - (904) 964-7776

### Cable Companies

Comcast - (800) 266-2278 or  
(877) 530-1213 Customer Service  
Satellite Companies  
Directv - (877) 356-2135 or  
www.directv.com  
Dish Network - (888) 656-2872 or  
www.dish.com

### Waste Disposal

Waste Management - (904) 964-4184

### Internet Services

Century Link - (888) 723-8010  
Comcast (855) 525-2512

### Educational Information

#### Bradford County School Board

501 W Washington St.  
Starke, FL 32091  
904-966-6800

#### North Florida Technical College

609 N Orange St  
Starke, FL 32091  
(904) 966-6764

#### Sante Fe College

Andrews Center  
Director, LaToya Chandler  
209 W. Call St.  
Starke, FL 32091  
904-964-5382

### Employment Information

#### CareerSource

#### North Central Florida

904-964-8092 Job Seekers  
904-964 WORK Employers  
925 N. Temple Ave., Suite C.  
Starke, FL 32091



# Be a part of a child's journey to healing

♥ FOSTER CARE

♥ ADOPTION



PARTNERSHIP FOR  
**STRONG  
FAMILIES**

There is a child or teen in your  
community who needs you to say yes.



(352) 244-1615



[HopePartner@pfsf.org](mailto:HopePartner@pfsf.org)



# Bradford County Manager Scott Kornegay Commissioners and Staff



**County Manager- Scott Kornegay**  
**Executive Assistant – Amanda Brown**  
**County Attorney - Rob Bradley**

The Bradford County Manager is the administrative head of the county and is responsible for the administration of all departments of the county government over which the Board of County Commissioners has authority pursuant to Florida law. The County Manager is appointed by and is directly accountable to the Board of County Commissioners.

The County Manager is responsible for implementing and executing the policies, ordinances and budget adopted by the Board; and directly oversees the management and operations of numerous departments of county government to ensure the county operates efficiently and effectively.

Scott Kornegay is a lifelong public servant and a veteran of the US Air Force and Florida Air National Guard. He retired from the Jacksonville Fire and Rescue Department with nearly 24 years of service. Scott is the former city manager of the City of Keystone Heights and most recently served as the Executive Director of the Lake Region Development Corporation. He holds a Master of Public Administration degree from the University of North Florida and earned a bachelor's degree in public administration from Flagler College. Scott lives on Lake Santa Fe with his wife of 37 years, Diane and his bird dog, Lincoln.



**District 1, Carolyn Spooner**

District 1, Carolyn Spooner  
 P.O. Drawer B, Starke, FL 32091  
 Office: (904) 966-6327  
 Cell: (904) 966-1307  
 Email:  
 carolyn\_spooner@bradfordcountyfl.gov

**District 2, Kenny Thompson**

P.O. Drawer B, Starke, FL 32091  
 Office: (904) 966-6327  
 Cell: (904) 796-2261  
 Email: bocc@bradfordcountyfl.gov

**District 3, Chris Dougherty**

P.O. Drawer B, Starke, FL 32091  
 Office: (904) 966-6327  
 Cell: (904) 796-7095  
 Email:  
 chris\_dougherty@bradfordcountyfl.gov

**District 4, Danny Riddick**

P.O. Drawer B, Starke, FL 32091  
 Office: (904) 966-6327  
 Cell: (352) 318-4950  
 Email: bocc@bradfordcountyfl.gov

**District 5, Diane Andrews**

P.O. Drawer B, Starke, FL 32091  
 Office: (904) 966-6327  
 Cell: (904) 796-0782  
 Email:  
 diane\_andrews@bradfordcountyfl.gov







**Bradford County Building, Zoning and Fire Prevention**

Building Official- Rod Crawford II  
Executive Assistant – Aleshia Wilsey  
Zoning Director – Randy Andrews  
Fire Marshal – Chris Cooksey

Our goal is to serve the residents of Bradford County with professionalism and efficiency through licensing, permitting and inspections to ensure the health, safety, and welfare of our community. Our staff has over 14 years of experience and not to mention we all live in this wonderful county.



The Building Department can help customers with permits needed for their home renovation, additions, or new construction, installing a mobile or modular home. We issue roof, AC, electrical and plumbing permits. We also help customers with fraud or unlicensed activity. Our Zoning Department will also help answer any questions you have about land use, zoning or rezoning, setbacks, flood zones, land development and much more. The departments wouldn't be complete without the Fire Marshal which offers life safety inspections for assisted living, daycares, new or existing commercial buildings, and change of occupancy. We love visitors and want to keep YOU on task during your next project!

*Please visit our website to receive more info or call 904-966-6223 [www.bradfordcountyfl.gov/building](http://www.bradfordcountyfl.gov/building)*



**Community Development**

Community Development Director- Kelly Canady

Our mission is to improve our housing stock in Bradford County. We strive daily to improve the quality of life for all qualified residents. We assist in home repairs and purchase assistance for affordable homes. We take pride in helping make our community a better place every day.



**Department of Health**

Department of Health Administrator- Amie Oody

The Department of Health provides excellent work by focusing on healthy lifestyles and behaviors, public safety, maternal and child health. These goals are accomplished through staff that are empowered and trained to perform their job duties to the best of their ability with professionalism and dedication to improving the health of our Bradford community. The health department believes establishing partnerships and community commitments are key to improving the health status of residents and working closely with the Board of County Commissioners, local health advisory boards, and outside organizations vested in advancing health care issues in the community.



**Veterans Affairs**

Veterans Service Officer- Barbara Fischer

Our goal is to assist veterans and family members with their claims with the Veterans Affairs department. In addition, we also help them get military documentation of the veteran's military service. We enjoy helping the veterans and their family members navigate the VA claims process. Barbara is retired from the Air Force after more than 23 years of service.





### **Fire Rescue**

Chief of Fire Rescue- Ben Carter

The Fire Rescue team is comprised of highly trained and skilled professionals who are incredibly passionate about protecting this community. We believe it is our duty to be at our best when you are at your worst. We take great pride in our commitment to training and continuing education, which ensures that our team is always up to date with the latest techniques and best practices in emergency medicine and firefighting. Regardless of whatever challenges we may be facing, the bottom line is “we’ve got you covered”.

### **County Library**

Library Director- Robert Perone



The library’s mission is to provide materials, and programs that provide information and inspiration to the citizens of Bradford County. The library has a story time room, Genealogy/ Florida room, Conference room, large meeting room, and two study rooms as well as office and workspace for the staff within it 19,266 sq. ft. of space. There are 30 public computers for different age groups available to the public. The library provides fiction and non-fiction materials in print and electronic formats for all ages to read and listen to. We also have a substantial DVD Collection that will appeal to all ages. The library has copiers, printing, and scanning available and we currently have two staff members available to provide notary services. The library currently provides programming for all ages from babies to more mature residents. The library also provides ESE programs for middle school and high school students, and we are planning programs to begin programs for County residents with special needs. The library regularly partners with the University of Florida extension office to provide programming designed to enhance the lives of Bradford County residents.

### **Public Works**

Public Works Director- Jason Dodds



- preserve the County’s investment in roadways, bridges, facilities, and environment by planning, implementing and administrating maintenance, inspection, and reconstruction.
- provide an effective, efficient, safe environmentally sensitive mosquito control service.
- preserve, protect, and improve the environment by promoting recycling and proper solid waste handling and management practices.
- provide all public roads with signs and signals.
- provide support services during natural disasters or other emergencies.



### **UF/ IFAS Extension Bradford County**

Extension Director- Dr. Cynthia Sanders

The Bradford Extension provides research-based solutions to the community. We are dedicated to developing knowledge in agriculture, human and natural resources, and the life sciences and to making that knowledge accessible to sustain and enhance the quality of human life.



# HOPE CHRISTIAN ACADEMY

INFANTS - 12th GRADE VPK DUAL ENROLLMENT

ACCREDITED ILCS/FLCS and COGNIA



## ENROLL NOW! Hope Christian Academy

Private  
Biblical Worldview  
Vouchers & Scholarships Accepted  
Lunch Prepared on Campus  
College-Prep Curriculum  
Title I & Tutoring  
Standardized Testing  
STARS Readiness Testing  
Dual Enrollment  
Award-Winning Athletics  
Student Government Assn.  
National Honor Society  
S.T.E.A.M. Fair, Drama, Key Club  
Before- & Aftercare & more!

**WE'RE GROWING!  
WE'RE HIRING!**

**COME FOR A TOUR!**  
**VOUCHERS &  
SCHOLARSHIPS**

**352-473-4040**  
Near Starke & Keystone  
[myhopechristianacademy.org](http://myhopechristianacademy.org)

A ministry of Hope Baptist Church. Estab. 2001





**CITY COMMISSIONERS**

SCOTT ROBERTS, MAYOR  
ANDY REDDING, VICE MAYOR  
JANICE D. MORTIMER  
SHANNON SMITH  
DANNY NUGENT

**CITY MANAGER**

RUSSELL A. MULLINS

## *How can we help you?*

Visit our website to find out more about our departments that serve you:

- BUILDING, ZONING, CODE ENFORCEMENT AND FLOOD PLAN MANAGEMENT
- ECONOMIC DEVELOPMENT
- PARKS AND RECREATION
- UTILITY SERVICES

*[www.cityofstarke.org](http://www.cityofstarke.org)*

Starke continues to play an important role as a cultural center of the region. Located less than an hour south of Jacksonville, and just 30 minutes north of Gainesville, the City is home to several colleges and a historic downtown featuring local restaurants, shops, and a 1940s era movie theatre. From friendly residents to Friday nights in the stands cheering on the Bradford Tornadoes, you'll find that Starke strives each day to meet our motto of "Southern Hospitality at its Finest".

CITY OF  
**STARKE**

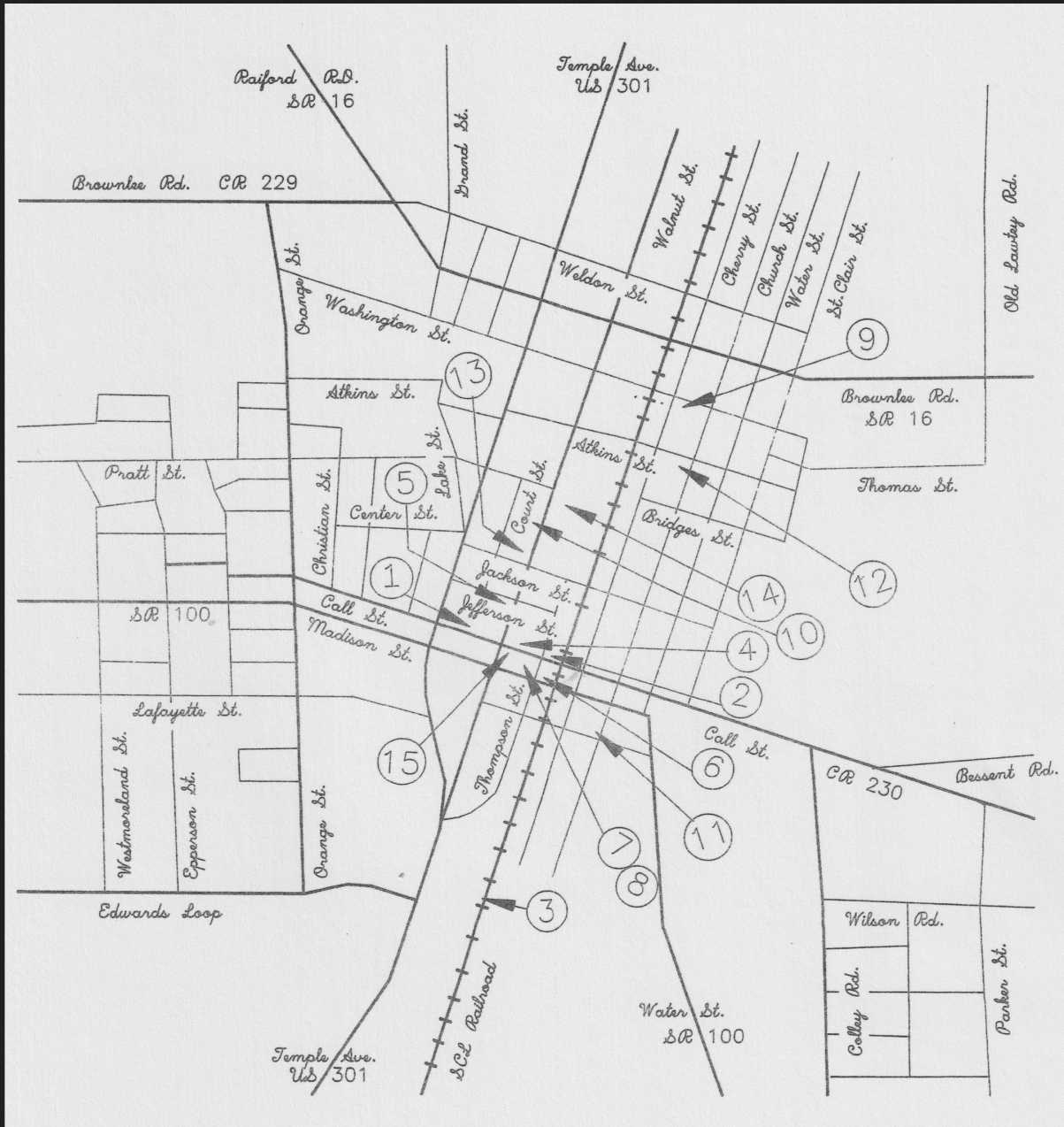
**904-964-5027**

209 N. THOMPSON STREET, STARKE, FL 32091



# GUIDE TO HISTORIC STARKE

Eagle Scout Service Project of Douglas Wayne Snyder II  
 Boy Scout Troop 70, Starke, Florida  
 Project Sponsored by the Bradford County Historical Board of Trustees



**1** The Old Bradford County Courthouse as built in 1902 and served Bradford County as the seat of government for 66 years. The Courthouse was renovated and is presently used as Santa Fe Community College Andres Center. The site is listed on the National Register of Historic Places, and is an excellent example of Southern Gothic Revival style.

**2** The Rosenberg Building, located at 201-203 E. Call Street was built between 1895 and 1901. It has been used for many purposes, including lodging military for a short period. Bought by Charles Rosenberg in 1941, it has just finished renovation for use as a Fine Arts Center by the Santa Fe Andrews Center.

**3** The Railroad has played a very large role in the history of Starke. Starke developed around the crossing of several early roads and the railroad, and it joined Starke to the rest of the country in the early years of growth.

**4** Mitchell's Reccall Drug Store, located at 127 E. Call Street was built about 1897. The first floor has housed sev-

eral stores and the Starke post office until 1941. Offices were located on the second floor.

**5** The Von Klein Home, now the Magnolia Hotel, is located at 137 N. Walnut Street. The home was built before 1884. The original owner was Dr. Lochr Von Klein, an early Mayor of Starke. The home was turned in to a hotel in the late 1920's by Arthur and Gertrude Williams.

**6** Vaughn Johnson Cabinet Center is located at 140 S. Thompson Street and consists of three buildings built in the 1920-1930 period. The first building was used as a garage for the Ford Motor Company. The second building was built for a Coca-Cola distributor. The third building was added to the first building as part of the auto sale and service shop.

**7** The building that. Now includes Starke Shoe Repair, City Barber Shop and This n'That was built in 1901-1912. This site was first owned by George Cole in 1859. Call Street is named after his friend, Florida's Lt. Governor Call. This building is a remnant of the earliest Starke business district.

**8** The site at 108 E. Call Street was built in 1895. The most distinctive feature is the traditional storefront facade, which typifies early 20th century architecture.

**9** The palatial Sidney J. Sternburg Home, built by a wealthy oil and coal family from Pennsylvania, has stood on the corner of North Cherry and Washington Streets since 1889.

**10** The Charles Hardy home at 327 N. Walnut Street was originally build as the home of Edward P. Duncan, an officer of the Bradford County Bank, around 1900. The longest period of ownership was by the Eugene S. Matthews family, who purchased the home in 19227 and owned it until 1960.

**11** The Archibald Johns Home on Nana Street was built before the Nonal 1900. It was the home of the only Starke resident to become Governor of Florida, Charlie Johns.

**12** The Color T. Peek Home was built in the early part of this century. Mr. Peek was one of the first teachers in the Starke Institute, the first school in Starke. Mr. Peek went on to become one of the Mayors of Starke. The home has been renovated by the current owner and was moved from Madison and Court Streets to the present location.

**13** The Lex Green Home is located at 323 N. Walnut Street and is now owned by Edwin Jeffcoat. The home is an excellent example of Southern Classical Revival architecture prevalent in the second and third decades of this century. The home was originally occupied by the Green family. Mr. Lex Green represented the Starke and Bradford area in the U.S. Congress for more than 20 years.

**14** The Judge Elzia Sanders Home at 344 N. Walnut Street was originally built by Lawrence Wall, who served in the Florida Legislature in the early years of this century. Later bought by Col. D. E. Knight, a Starke lawyer, it was extensively remodeled.

**15** The Bradford County Bank, 100 E. Call Street opened on July 4, 1914. Now owned by C. R. Smith, Jr., the Bank has been restored to tits Bold Classical Revival style, with a lofty interior making a strong architectural statement about the community's hopes and dreams in the early boom period of the construction. The Bank is listed on the National Register of Historic Places.

*This map is dedicated to  
 Mr. Eugene Matthews Who  
 made it all possible.*



## Bradford County's UF Extension Office serves more than farmers



The University of Florida's Cooperative Extension Service Office doesn't just help farmers grow corn and raise cattle.

According to its website, the office in downtown Starke also has programs to provide information to motivate and empower families with the skills needed to adapt and sustain a healthy lifestyle and achieve financial services.

The extension office is a partnership between the U.S. Department of Agriculture and UF's Institute of Food and Agriculture Sciences. The office provides research-based educational programming.

The Extension Office launched its Health Equity program earlier this month to narrow the gap between families with needs and the ability to participate in available benefits.

Transportation, budgets, work hours and child care are a few of

the barriers which keep people from getting vital information and services. That's why the Extension Office set up a Health and Wellness Hub to expand services.

A study of Bradford County residents found nutrition, education, wellness and mental health were among the most critical concerns.

The Health and Wellness Hub, which is at the Rje Center at 1080 Pine St. Starke, is a collaboration of community services. The center will host workshops where residents can get information and be connected to available services.

Meridian will provide mental health services and Farm Share will help feed residents.

The office also conducted classes to help residents identify invasive species. In a county where agriculture is king, keeping an eye on bugs that can destroy a field is paramount.

Of course, the primary function of the Extension Office is to provide information on Family and Consumer Sciences, Livestock Natural Resources, Agriculture, 4-H Youth Development and Horticulture.

One of the most popular programs includes master gardeners conducting workshops to show to grow more vibrant vegetable, flower and butterfly gardens.

The Bradford Extension Office is located at 2266 N. Temple Ave. in Starke. For more information, visit <https://sfyl.ifas.ufl.edu/bradford/> or call (904) 966-6224.



# Call Street

## *Call Street District's charm awaits those who bypass the bypass*

STARKE – For those who want to bypass the bypass, Call Street is waiting to embrace visitors with its historic downtown charm.

Dotted with mom-and-pop stores, 23 historic buildings, a 131-year-old clock tower atop the old courthouse and a theater from the early days of World War II, visitors can still take leisure strolls along the sidewalks within earshot of the constant whirr of unwitting travelers on U.S. Highway 301 and the U.S. 301 bypass.

The Call Street District and its businesses are listed on the

National Register of Historic Places. The historic district is the primary restaurant and entertainment district, with a theatre, antique shops, restaurants, a history museum and a cultural center.

Call Street is part of State Road 230. It was named in honor of former Florida territorial governor Richard K. Call.

The cornerstone of the Call Street District is the famed Florida Twin Theater on the corners of East Call and Walnuts streets.

The circular brick building featured an art deco style and



light blue neon lights. It opened on Oct. 4, 1941, with two features – “Ringside Maisie,” with Anne Sothern, and “A Yank in the R.A.F.” with Tyrone Power and Betty Grable. Tickets were 40 cents for adults and 10 cents for children. Popcorn cost a nickel.

The theater was remodeled in 1972 after Robert and Barbara Barksdale bought it, and it was overhauled again in 1984 after Lee and Vicki Sparks bought it.

The Florida Twin Theater has maintained its iconic charm while adding modern amenities like Dolby Digital Surround Sound and a new projection system.

The theatre is open for one show on Thursday and Friday

and two shows on Saturday and Sunday. To keep its costs low, it doesn't accept credit and debit cards, so tickets for features are only \$7 for adults and \$6 for seniors, children and matinees.

Visitors can sip coffee on a sidewalk table in front of the Call Street Café or have an authentic Italian meal at Tony and Al's Deli.

Shoppers can find great deals at Rags to Riches, Tenley's Antique Shop and Scarlet's Southern Accents.

During the holidays, Call Street becomes the festive heart of Starke. The area is decked with lights and decorations for the annual Christmas on Call Street.

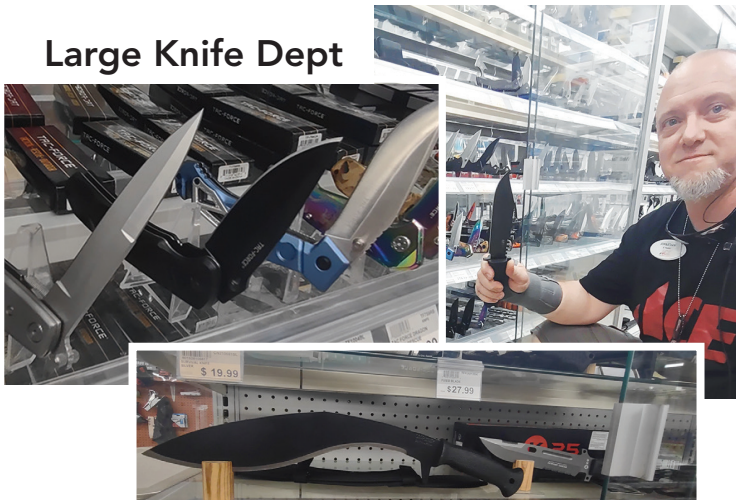




# Bryan's ACE



Large Knife Dept



## KEYSTONE Gifts & Guns

155 South Lawrence Blvd • Keystone Heights  
**352-473-8684**

## Sweet P's FLOWERS & GIFTS

*We Deliver Smiles* 352-473-0352 or 800-255-6959  
www.sweetpsflorist.com

251 East Walker Dr. | 352-473-4006 | [www.bryansace.com](http://www.bryansace.com) | Byransace1

# Bryan's ACE - STARKE, FLORIDA -

**"The Helpful  
Hardware Store"**

There's Something for Everyone  
in our Home Decor  
Section!



### WE OFFER THE FOLLOWING SERVICES:

- Auto Keys and FOBs for most vehicles
- Glass cutting to your size
- New Screen and Screen Repair
- Delivery • Color Matching Paint & Pool Water Testing
- Rekey door locks • Special orders

1101 S. Walnut St. | 904.964.4642 | [www.bryansace.com](http://www.bryansace.com) | online dedicated services: [www.acehardware.com](http://www.acehardware.com)





**SUPERSTORE**

**SHAZAM!**

HO  
MI

"It's All About You"



**HONORING OUR LOCAL HEROES TH  
\$1000 EXCLUSIVE CASH REWARD FOR M**



**OPENING SUMMER** *Sales &*  
**GREAT DEALS** NEW & USED **LOWER PA**



2024 FORD F-250 SUPER DUTY



2024 FORD EXPLORER



2024 FORD COMM



2024 FORD ESCAPE



2024 FORD MUSTANG



2024 F-

**NOW PAYING TOP DOLLAR ON ALL TRADE-IN**

**GOOD CREDIT / BAD CREDIT NO PROBLEM • GREAT INTEREST RA**

**REGARDLESS OF YOUR CREDIT**

**MURRAY FORD - 904-964-7200 • 13447 US HWY**



# ...OME OF THE 15 YEAR/150,000 ...LE POWERTRAIN WARRANTY



**...IS SUMMER AT MURRAY FORD SUPERSTORE IN STARKE  
...MILITARY, FIRST RESPONDERS, AND MEDICAL PROFESSIONALS.  
...OFFER ENDS JULY 5TH.**



*Event*  
**...PAYMENTS**



**...INS  
...ATES**

## At Murray Ford, It's All About YOU!



**MURRAY Ford SUPERSTORE**  
BUILT Ford PROUD

**MOBILE SERVICE**  
We Come to You, Just Call to Set Up an Appointment  
**904.964.2271**  
[www.GetYourFord.com](http://www.GetYourFord.com)



**We know life gets hectic!**  
Call or visit our website  
to schedule an  
appointment for  
one of convenient  
services! We will  
come to YOU!



Stay in **Play** Mode  
With Ford  
Pickup & Delivery

Let us pick up and return your  
vehicle for service.\* It's part of  
**You Mode**, our Ford owner  
experience made just for you.

**...Y 301 S. • STARKE, FL • GETYOURFORD.COM**



# Make a BANKING SWITCH that sticks.

We believe a personal relationship with your banker is one of the most important connections you can have in this community. Our bankers offer not only great banking and borrowing solutions, but also individual attention, a ready ear to listen and a desire to help reach your personal and business financial goals. **Make the switch today.**



**Patricia Evans**  
Bradford/Clay  
Community President  
904.452.2050



**Becky Barrs**  
Community Banking  
Administrative Assistant  
904.452.2051



**Penny Pearson**  
Community Banker  
904.452.2056

## Business Services

Deposit Accounts  
Loans and Lines of Credit\*  
Merchant Services\*  
Credit Cards\*  
Treasury Management Services\*

Payroll Solutions  
Factoring\*  
Lockbox Service  
Remote Deposit\*

[ccbq.com/business](http://ccbq.com/business)



Member FDIC LENDER \* Subject to credit approval and may be subject to property approval.

## FunPoint

### What's the Point?

### Restaurant? Arcade? Car? Yes!

Is Fun Point a restaurant with an arcade? Yes.

Is it a sports bar with a restaurant? Yes.

Is it an arcade with a sports bar? Yes.

"We're a little bit of everything," said server Bailey Wise.

And it's getting better, according to kitchen manager Lynn Starling. After transforming the Western Steer Steakhouse into a family-friendly restaurant offering drinks at one end and video games on the other side of the building, Fun Point is undergoing another makeover.

"Our biggest thing right now is we're redoing our menu a little bit to add a couple of things for the community," Starling said.

"We're adding new TVs. We're replacing all of our games. Everything is going to be brand new."

Unlike most businesses, the COVID-19 pandemic helped launch Fun Point.

"People thought we were a Chucky Cheese until COVID hit, and then they found out the food was good," Starling said.

"We were closed down for two weeks and reopened for to-go orders. People thought we served cardboard pizza. They tried our menu and saw that we tried to use everything fresh. Fresh ground beef for the burgers; we have jumbo chicken wings."

Fun Point offers the only salad bar in town, daily lunch specials



and birthday packages. It also has live music, a DJ and team trivia.

Gamers use cards loaded with credits to play in the arcade. That reduces the need for the restaurant to monitor the area with an employee, Wise said.

"The arcade runs itself," she added.

While Fun Point has three points of interest under the same roof, Starling said the numbers are clear: it is a restaurant with an arcade and a sports bar.

"We're a restaurant first," she said. "We always get asked if we're a restaurant, arcade or a bar."

We're a restaurant with an arcade and a bar."





*Answering the call:*

# Fostering hope in Bradford County

Partnership for Strong Families (PSF) is the lead child welfare agency in Bradford County and 12 other surrounding counties. PSF is contracted by the Department of Children and Families to provide foster care, adoption, and child abuse prevention services.

On average, 37 children enter foster care each month in North Central Florida. As of March 2024, there were nearly 50 children in foster care from Bradford County alone and only 10 traditional foster homes.

When a child enters foster care, they are removed from their home for their safety, but for a child this all comes as a huge shock. In a single moment, their entire world is turned upside down as adults quickly grab a few personal items for them and hurry them into a car with someone they have never met to be taken to a house they have never visited before. We need more people to say yes to being foster

**In a single moment, their entire world is turned upside down**

parents for these children. It is a challenging situation for everyone, but as the adult and caregiver, you can help ease the stress of this incredibly difficult transition.

Sandy Starling and her husband Mike have been fostering in Bradford County since 2005. "We adopted a teenager in 1997. When all 3 of our sons moved out, we decided to get into fostering. Our adopted son encouraged us to do that. We saw so many siblings separated and wanted to try to keep siblings together."

Every child that comes into care has unique needs, so we are looking for unique foster families that can create an environment to promote that child's success. Everyone has something to offer, and you can make a difference in just one child's life. We are looking for homes that would be best suited for teens, sibling groups, children with complex medical needs, and children with trauma-related behaviors. There are no requirements for foster parents' relationship status, work status, or previous parenting experience.



Foster care is a temporary placement, and the goal is reunification with biological parents when safe to do so.

The idea of a child coming to your home and eventually leaving can be scary for potential foster parents, but every moment you spend loving a child is worth it. You are helping them to feel safe and giving them a foundation of love and trust to become more resilient.

The first step to becoming a foster parent is to reach out to the PSF Recruitment team at [HopePartner@pfsf.org](mailto:HopePartner@pfsf.org) or 352-244-1615. They are happy to answer any questions you have and when you are ready,

they will enroll you in the parenting training class. These classes have 7 sessions and are held either virtually or in Gainesville.

"Go all in! Don't be afraid to get too attached. The kids are worth it!" says Tracy Allen. She and her husband Ryne have been fostering for 5 years. "Find your village and support system before you even become licensed. You will need them. Invite others on the journey with you."

Every child deserves someone to love them and provide a nurturing, stable family.

Will you say yes?



## Florida International Rally and Motorsports Park

# Racing enthusiasts rally around high-speed options at The FIRM

STARKE – Whether you're an Indy-Car Series champion, a high-flying RallyCross veteran or a 9-to-5 day-dreamer looking to escape a monotonous routine with the exhilarating sound of squealing tires, the Florida International Rally and Motorsports Park at the Keystone Heights Airport can satisfy any need for speed.

Located along the southern side of the Keystone Airport, the complex

has a 420-acre off-road course, a seven-mile rally course, a 1.6-mile road course with assess and hairpin turns and trails weaving through the Florida thicket for more than 20 miles.

"We only close on Christmas and Thanksgiving," said the tracks Operation Manager, John Van Buskirk. "Other than that, we stay very busy."

Located 10 miles east of Starke on State Road 100, The FIRM is a favorite

proving ground for seasoned professionals and amateurs alike.

In addition to several race courses, there is a 1,700-foot-long skid pad made of limerock so drivers can learn car control and high-speed maneuvers. And, there's a half-mile karting track.

Novices start in the classroom, learning the basics of navigating high-speed corners, proper braking techniques, and shifting gears. Experienced drivers go directly to the road or rally courses, but their progress is under review.



Welcome to North Florida Pharmacy! Serving Lake City and the surrounding areas since 1993. Our simple formula of courteous customer service and our quick prescription turn-around time has enabled us to grow and reach out to the North Florida region with eight total pharmacies.

### WE DELIVER

North Florida Pharmacy offers drive-through service, a trained Dr. Comfort shoe specialist, and in-pharmacy vaccines for the flu, shingles, and more!



### North Florida Pharmacy of Keystone Heights

405 S. Lawrence Blvd • Keystone Heights, FL 32656  
(352) 478-2057 • [northflpharmacy.com](http://northflpharmacy.com)  
Hours: Monday-Friday 8:00am-6:00pm • Saturday 9:00am-1:00pm



**LAKE AREA TITLE SERVICES, INC.**  
**Full Service Land Title Company**  
[www.latsikh.com](http://www.latsikh.com)

**Sandra Darley, Owner/Title Agent**  
Keystone Heights: 7404 State Road 21 • 352-473-9009  
Lake Butler: 25 E. Main Street • 386-496-8238  
[sandra.latsikh@gmail.com](mailto:sandra.latsikh@gmail.com)

**LAKE AREA TITLE SERVICES, INC.**  
352-473-9009  
• Real Estate Closings •  
• Notary •





Professional-level racers use the diverse motorsports facility to extract every fraction of a second from the timing.

One of the track's regulars was X Games supercross, motocross and rally racing gold medalist Travis Pastrana. He brought his wildly popular Nitro RallyCross to The FIRM in 2021, where soldout crowds enjoyed two days of sports cars racing on a course comprised of concrete, sand and a 100-foot jump over a manufactured canyon.

The series expanded to Europe and Asia in 2023, but after calling it one of his favorite circuits, Pastrana vowed to bring his series back to The FIRM.

"I really believe it's a great area

for motorsports," Pastrana said. "The great part is this track was so awesome. You have a rally training school. You have everything we put into that track. They can take it and build the sport from the grassroots up. That's what we need to keep building the sport."

The facility is constantly rented for corporate functions, classes and military training.

"Between the [Sports Car Club of America] and our own events, we probably have 1,000 customers a year go through here," Van Buskirk said. "A lot of people may have more experience than they think they do. This is where they can find out."

The track evolved from what once was Crystal Lake Army Airfield, which was known as the Keystone Army Airfield. It was used to teach tactical combat techniques during World War II.

Once the war was over, the base turned over the facility to the City of Keystone Heights as a private airport, but the airport's connection to the military remained strong.

"There are a lot of military training classes here because we can simulate a lot of different situations they face," Van Buskirk explained.

"Special Forces, Seal Team Six, train here ahead of missions to refine their next assignment."

In 1998, English rally driver Ivor Wigham set up the seven-mile European Rally School through the sand, scrub wood and pine forest on the corner of airport property.

"The rally driver is the most complete driver you can find," Wigham told racingcircuits.info.

"He can drive on all surfaces, in all kinds of conditions, in all vehicles – and that's just what the military wants."

Wigham invested \$2 million in 2008 to create the 1.6-mile road course. Wigham sold the track in 2012 to The Strategic Group of Gainesville.



The FIRM has a fleet of racing vehicles, including Jeeps, rally racers, trucks, and road-course cars. Drivers also are allowed to bring their cars during open sessions.

"A lot of people who come here are trying to learn how to drive in competitive situations," Van Buskirk said. "Not only do they learn something, they have a blast doing it."



*Rally cars have only one headlight; the other is fitted with an air intake port for cooling and improved performance.*





## Camp Blanding Museum

# Military history on display to commemorate camp's contribution during World War II

CAMP BLANDING – The military museum at Camp Blanding is nestled historically and figuratively amidst an array of once-authoritative pieces of might.

A Douglas C-47 Skytrain, or "Gooney Bird," used to haul personnel, cargo and paratroopers into enemy territory during the invasions of Burma, Sicily and France, now sits quietly behind the museum at the entrance to the joint training center. Instead of evading enemy gunfire, it now serves as a unique photo backdrop.

On the grounds are Jeeps, a tank, artillery, half-tracks and the French Borne from Omaha and Utah beaches that started the beginning of the 712-mile "Liberty Road" in honor of the Allied armies' liberation of France from Nazi occupation.

Across the street are airplanes and jets to commemorate the Korean and Vietnam wars, Desert Shield/Desert Storm and the Global War on Terror.

But inside the museum, guests are embraced by a kaleidoscope of uniforms, weapons, equipment,

newspaper clippings, photographs and artifacts from Allies and Nazi forces during World War II when Camp Blanding's 73,000 acres were used primarily as a training base for nine infantry divisions. The conversion to war preparation made the camp the fourth-largest city in Florida.

At its peak, there was a 2,800-bed hospital and German prisoner-of-war compound at the training reservation.



The museum is one of two original buildings remaining on the base. During the war, it served as a bachelor's officer's quarters (BOQ). Now, it's where veterans can reminisce about their services and younger generations can appreciate the bravery and sacrifice of The Greatest Generation.

"Originally, this building was a guest house and was still being used basically like the BOQ until they converted it over to the museum," museum curator Greg Parsons said. "The first floor of the building

*continued on page 28*



*a*  
**BLAST**  
*from*  
*the past*





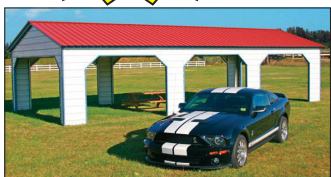
# HANDI-HOUSE OF STARKE

"PROUDLY SERVING YOU FOR 43 GREAT YEARS!"

COME SEE DENA...  
the DEAL MAKER



## TAX TIME SAVINGS



3 STALL CARPORT



ROUNDED STYLE CARPORT



RED BARN



UTILITY GARAGE



CARPORT & GABLE



ENCLOSED GARAGE



WOOD STYLE



UTILITY WITH PORCH

WE PULL PERMITS • FLORIDA CERTIFIED

## 150 MPH WINDLOADS

WARRANTY PACKAGES • CONCRETE PACKAGES • HIGH QUALITY STEEL



HORSE BARN



RED BARN



SIDE DOOR PORTABLE



CEDAR PORTABLE



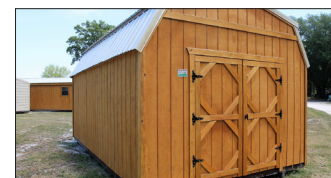
RV CARPORT



UTILITY CARPORT



LOFT BARN



WOOD WITH END BARN DOORS

**\$99<sup>00</sup>**  
DOWN  
DELIVERS

**FREE**  
DELIVERY

**RENT**  
TO OWN

**NO** CREDIT  
CHECK

Located in Starke, Florida • 15195 US Hwy 301  
Call Dena - 904-964-3330

**REPOS**  
AVAILABLE



## CAMP BLANDING (continued from page 26)

predominantly focuses on World War II history."

Parsons said the second floor houses a research library, conference room and other artifacts.

A gift shop that specializes in history books, pins, patches, badges and other historical military items is in the museum.

Parsons said that before the pandemic, the museum had attracted 13,000 visitors. It was closed for months during COVID-19, and attendance has slowly rebounded to nearly 11,000 yearly.

The museum is open daily from noon to 4 p.m. There is no admission fee, but donations for future expansion and daily operations are accepted.



Douglas C-47 Skytrain

"One day, we hope to expand the museum so we can go into some of those more recent conflicts, like Korea, Vietnam, Desert Storm, Enduring Freedom, and Iraqi Freedom. That's, ultimately, where we want to go.

"But now you'll see uniforms, field gear, weapons and what life was like for the soldiers that were here during World War II."

*The museum is at 5629 State Road 16, just eight miles east of downtown Starke.*



## Liberty Road



These markers, or bornes, commemorate the liberation of France by the American armies. They were placed at each kilometer along the roads followed by Patton's Third Army, beginning at Utah Beach and ending in Bastogne in Belgium. Each contains 48 stars representing the (then) 48 United States, and a "flaming torch of liberty."

The route totaled 1146 bornes for each kilometer, or 712 miles. As traffic increased along the route it became necessary to remove five of the bornes, one of which was donated to the Camp Blanding museum to honor the contributions of American troops.



Visit Our Showroom!

# TEAL TILE

CARPET ONE FLOOR & HOME

Your Flooring Specialists

Sales • Service • Installation  
COMMERCIAL & RESIDENTIAL

- Vinyl • Carpet • Ceramic Tile
- Hardwood & Laminate Floors

**904-964-7423**

131 N. Cherry St., Starke, FL 32091  
Mon-Fri 8:30 am - 5:30 pm  
Saturday by Appointment

BUYING POWER OF  
OVER 1,400 STORES!!



## MYCLAYELECTRIC *on the go and in control*



Our MyClayElectric online dashboard and mobile app can help you manage your account, view and pay your bill, monitor your usage 24/7, report service issues and receive important notices...all in the palm of your hand and online.



Find us on [f](#) [ClayElectric.com](#)

Automated Outage Reporting: (888) 434-9844  
Keystone Heights District Office: (352) 473-4917





## Kingsley Lake

# A wondrous piece of history

KINGSLEY LAKE – From the air (and that’s about the only way you can get to view it) Kingsley Lake is curiously perfectly round and pristine. It’s why pilots use the “silver dollar lake” as a landmark.

How it formed, how it’s quietly been able to remain a treasured gem in Northeast Florida, why wildlife officials believe largemouth bass live longer there than in other waterways and protected access are just a few anomalies that have baffled geologists and conspiracy theorists for decades.

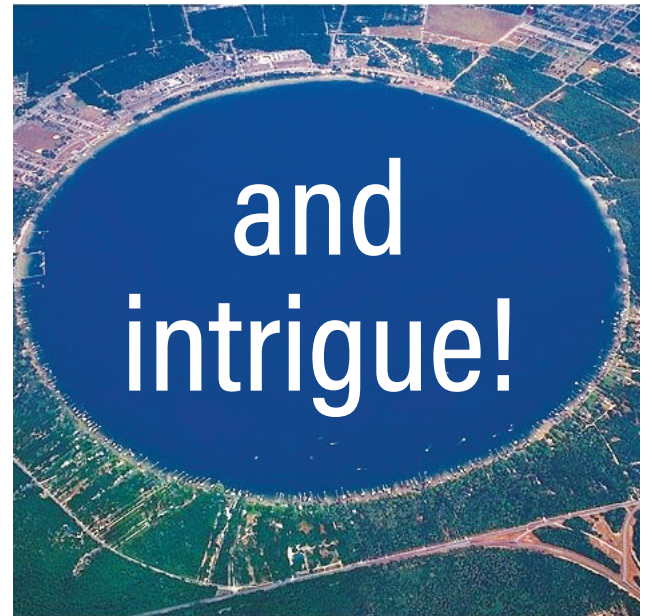
Considered the only perfectly round lake in the world, scientists said the 2,000-acre lake is the oldest in Florida, cut like a silver dollar in the thick Florida scrubland. But how did it get here?

There are no definitive answers, which only adds to the mystique.

Some say it was a sinkhole, which is common in Florida’s terrain of sand and limestone. Acidic rainwater dissolves limestone to create a depression. Over time, the ground sinks into the cavernous aquifer to create gaping holes.

The only drawback to the most logical explanation is sinkholes are usually irregularly shaped. Kingsley Lake looks more like a giant bowling ball landed from from space, not a creation of time and environment.

*continued on page 30*



Open  
a new  
VyStar  
Checking  
Account

Get up to  
**\$425\***



Do Good. Bank Better.™

SCAN  
QR code to  
learn more



vystarcu.org

FEDERALLY  
INSURED  
BY NCUA

\*\$5 deposit in a primary savings account required for membership. Must mention the offer upon account opening. \$25 credited on or around 30 days following account opening. \$150 credited for establishing a recurring direct deposit into the new checking account and completing at least 15 debit card transactions within 90 days of account opening (credit on or around 91 days from account opening), and up to \$250 for referring 10 friends. \$25 credited for referring each friend who opens a checking account (credited on or around 30 days following friend's account opening. Limited to 10 referrals a year). Referred new member must present referring member's contact information at time of account opening, for referring member to receive \$25 incentive. Credit union programs, rates, services, terms and conditions are subject to change at any time without notice. Certain restrictions and limitations apply. ©2024 VyStar Credit Union.



## KINGSLEY LAKE

(continued from page 30)

“Carolina Bays” are cryptic depressions along Atlantic states formed by years of wind and water flow. But like sinkholes, they’re usually oval, not round.

Others wonder if it’s the result of a massive meteor.

Those lucky enough to enjoy swimming, boating, fishing and nonchalantly floating with a drink are too busy having fun to question the history of perfection.

Private homes and Camp Blanding Joint Training Center buffer every inch of the shoreline. That makes it practically impossible for visitors to enjoy the sandy bottom, its symmetrical depth from ankle-deep to about 90 feet, and its blueish-tinted

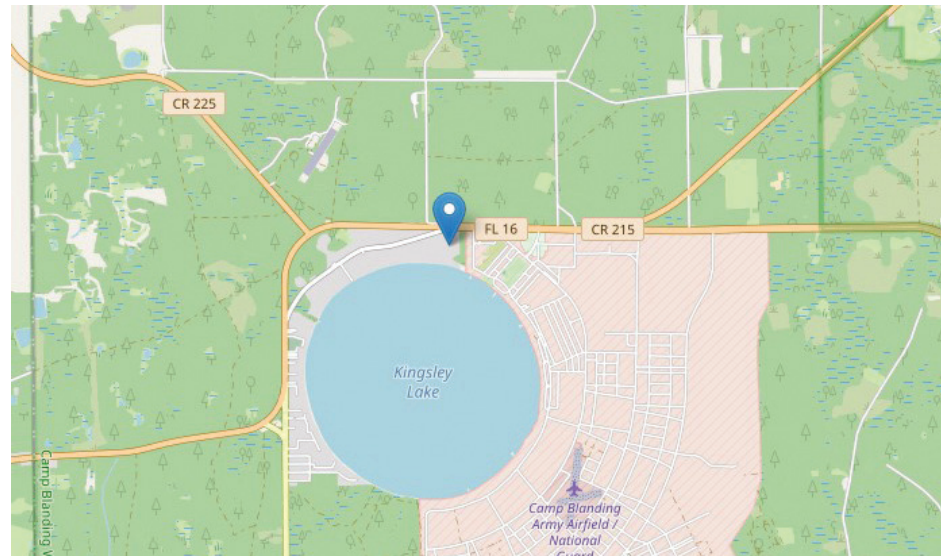
clear waters to access.

Homes flank the lake’s western side, while Camp Blanding takes up the west. There are no public access points to beaches, camping, or boating since the lake is surrounded by private and federally protected land.

There is a campground on the Camp Blanding side, but the only way to get to it is with someone with a military ID.

If you have military access or know a resident on the lake, you will have the opportunity to catch some of the biggest, oldest bass in the state. Some of the fish are thought to be as old as 16, according to FWC Fish and Wildlife Biological Administrator Allen Martin.

“We have a lot of these large bass, and a lot of them are caught,” Martin said.



He said bass are elusive and tend to stay in deeper waters most of the year.

Because of that, they’re harder to catch and grow into lunkers. The fish also have a freer reign because so few can get the chance

to marvel at the geometrical masterpiece.

Kingsley Lake is about seven miles east of downtown Starke, off State Road 16 on Kingsley Lake Drive, near the front gates of Camp Blanding.

**SALES  
INSTALLATION  
SERVICE**

**Service  
Bradford,  
Clay,  
Putnam and  
Alachua  
Counties**

**7415 SR 21 Keystone Heights • 352-473-9595**  
**Mike Bertie - Owner / CAC - 1815920**





*Architects of the future:*

# Northeast Florida Economic Development Corporation

The Northeast Florida Economic Development Corporation (NEFEDC) is a driving force for the economic progress of Northeast Florida. With a strategic focus on Bradford and its neighboring counties, we are the architects of a future where businesses can thrive, and communities can prosper. Our mission is straightforward: we aim to attract innovative industries, support the growth of local businesses, and foster a skilled workforce that powers our economy.

By leveraging our unique position, we facilitate the creation of high-quality jobs, stimulate investment, and drive the competitive advantage of our region. We understand the importance of an all-inclusive approach to economic development—one that includes our continued focus on communication and collaboration with different government and economic development agencies, advocating for infrastructure enhancements, and ensuring that our educational institutions align with the needs of the labor market.

At NEFEDC, we are not just plan-



ners and strategists; we are doers. Our hands-on approach means we work closely with businesses to navigate the challenges of expansion, relocation, and growth. We take pride in our region's natural beauty, cultural richness, and the entrepreneurial spirit of its people.

Amber Shepherd, our Strategic Alliances Business Partner, stands ready to assist stakeholders. Since our formation, NEFEDC has been actively responding to site selector Requests for Proposal (RFP), participating in major economic development conferences, and meeting with local leadership. We are bringing valuable market insights, resources, and opportunities to our community.

Our Board

- Sandra Kahle, Chair
- Bob Milner, Vice Chair
- Patricia Evans, Treasurer
- Marty Shaw, Secretary
- Evan Douglas, Director



Avery Roberts, Director  
Dawn Strickland, Director  
Dean Weaver, Director

We invite the readers of Clay Today and the Keystone Heights Herald to partner and invest with us. Whether you are a budding entrepreneur, a local business owner looking to expand, or a community member interested in our economic landscape, NEFEDC is your resource and advocate. With a range of inves-

tor member levels and benefits to match, we are sure to have the right fit for your organization. Together, we can continue to write the success story of Northeast Florida, ensuring our region is a place where business and quality of life are in perfect balance.

Visit [www.nefedc.com](http://www.nefedc.com) to learn more or contact us at [info@nefedc.com](mailto:info@nefedc.com) / 352-721-1209. You can also find us on LinkedIn and Facebook.



**Shane Parmenter**  
Agent  
*Helping you is what we do best!*



**Auto - Home - Life - Banking**

Email: [shane.parmenter@ffbic.com](mailto:shane.parmenter@ffbic.com)  
Office: 904-964-6369  
2270 N Temple Ave, Starke, FL 32091





**Libby's**  
*Art of Healing*  
**MASSAGE & WELLNESS**

[www.LibbysMassage.com](http://www.LibbysMassage.com) Online Scheduling Available

107 East Call St. • Starke, FL **(904) 964-HEAL**

*"Specializing in Customized Therapeutic Massage & Bodywork."*



# Things to do in Bradford County

## The Florida International Rally & Motorsport Park

7266 Airport Rd • Starke, FL 32091

(352) 473-2999

The FIRM is home to RallyPro Performance Driving School and the International Security Academy (ISA). ISA, relies upon the RallyPro Performance Driving School to teach units how to safely extract assets, at high-speeds and across varying terrain. All RallyPro instructors are highly skilled and the most diverse technical drivers in the world; uniquely experienced in vehicle dynamics, for high-speed, and high-risk driver training. The FIRM provides mission critical scenarios across surface changes at high-speeds. The weight transfer that occurs from surface transitions when going off-road, then back onto the tarmac, is the number one cause of fatalities for untrained drivers. RallyPro instructors teach advanced vehicle management skills that protect assets and saves lives.



The FIRM

## Public Boat Ramps

Various locations • Bradford County, FL 32091

(904) 964-5278

If you like to fish or ski, there's public boat ramps located in and around Bradford County where you can put in your boat and go fishing or skiing. There's Lake Sampson, Hampton Lake, Lake Santa Fe, Lake Alto and more.



Public Boat Ramp

## Gold Head State Park

6239 State Rd 21 • Keystone Heights, FL 32656

(352) 473-4701

One of Florida's first state parks since 1935. The initial property was donated by Martin J. "Mike" Roess and developed by the Civilian Conservation Corps (CCC). The CCC was launched in 1933 to combat unemployment during the Depression. In 1935, 25 craftsmen from Company 2444 were sent to the Gold Head site where they were joined by hundreds of CCC youth and established Camp SP-5. Together they planted trees, cleared areas for campsites, built roads and constructed many of the buildings.

## Bradford County Fair Grounds

2300 North Temple Avenue • Starke, FL 32091

(904) 964-5252

The annual Bradford County Fair. There is Cattle and Swine, their respective shows and sales. The Goat and Poultry exhibitions will be back this year as well. Lots of great food will be returning including The Kiwanis Club, featuring their great Bar-B-Que and other delicacies, The Rotary Club, featuring their funnel cakes!, along with Shands Hospital Auxiliary serving their famous Strawberry Shortcake!



Fair





**Bradford Sportsmen's Farm**

### **Bradford Sportsmen's Farm**

11394 SW 106th Ave. • Graham, FL 32042  
(352) 485-2302

The Bradford Sportsmen's Farm shooting range is located in Graham, FL and offers some of the best and most diverse shooting facilities available to the public in one site. These facilities include two fully automated, 14 station sporting clay courses with two machines at each station. We also have two fully automated 5-stands controlled by portable long-range controllers as well as a 25-yard pistol range, a 50-yard rifle and pistol range, a 300-yard rifle range, and an 850-yard rifle range. Our sporting clays courses are designed to accommodate all shooter skill levels with one course for novice to intermediate skilled shooters and another for tournament level shooters. New to our facility is our covered and air conditioned banquet facility.



**Biking**

### **Kingsley Lake**

Kingsley Lake is an almost circular lake of about 2,000 acres in North Central Florida, about six miles east of Starke, Florida. According to some sources, it is the oldest and highest lake in Florida, located on the edge of the Trail Ridge formation. The lake is a very stable lake with a sandy bottom. Its deepest part is about 90 feet.

### **Edwards Road Complex**

417B West Edwards Road • Starke, FL 32091  
(904) 964-8334

City of Starke Baseball Complex

### **Biking**

Just west of Starke you will find: Lake Sampson, Lake Rowell, and Lake Crosby. Fish these waters for bluegill, sunfish, crappie, and both sunshine and largemouth bass. Lake Sampson, in particular, is a fishermen's paradise. Lake Sampson and Rowell are connected by a canal, which is passable by small boat. Canoeing, swimming, picnicking, and hiking trails are also available. If you enjoy biking, you'll enjoy riding the Starke – Lake Butler Loop. This 61-mile bicycle route passes through Starke, as well as Hampton and Brooker, on its way around to Lake Butler.



**Camp Blanding**

### **Camp Blanding Museum**

5629 FL-16 #3040 • Starke, FL 32091  
(904) 682-3196

The Museum houses a colorful collection of weapons (U.S. and foreign), a refurbished World War II barracks, houses a colorful collection of weapons, photo exhibits, mannequins in uniform, and other artifacts. These exhibits tell the story of Camp Blanding, the units that trained there, and the surrounding area during World War II.

<http://www.bradfordcountyfloridatourism.com>  
if you need more pictures or more information



# Chamber Business of the Year: Vincent Eason, Keystone Heights RV Resort



KEYSTONE  
HEIGHTS  
RV RESORT

Many are unaware of the impact that Vincent Eason has made in the Bradford County and surrounding communities. In addition to creating over 150 jobs since the development of the RV resort (includes direct and indirect jobs), Vincent has served on area boards, advisory committees and made countless personal and business donations, including providing initial funding for the Speedville Fire Station. More recently, Vincent has yet again displayed his dedication to the betterment of this community by donating additional funding to build living

quarters at the Speedville Fire Station. Vincent has maintained his commitment of hiring local employees, vendors and business providers instead of looking at potentially cheaper online or out of area options.

One of the things I most admire about Vincent is his willingness to meet with other existing and potential business owners in the region to share with them his guidance and expertise so that their business can get off on the right start and/or flourish as much as his.

# Chamber Humanitarian of the Year: Dr. Peter John Gianas

Born in Wellsville, NY, Dr. Peter John Gianas opened his private practice in Starke and began work with Shands hospital in 1983 after attending medical school at John Hopkins University and George Washington University. His career included serving as medical director for Alachua County Fire Rescue, Bradford County EMS, Bradford County Fire Rescue, Clay County Fire Rescue, Union County EMS, Gilchrist County Fire Rescue, Starke Fire Rescue, Santa Fe Community College EMS Programs and the Florida Gateway EMS Training Programs. He served on the Area Health Care Center board of directors and the International Trauma Life Support board of directors.

Dr. Gianas worked with ITLS for more than 20 years, including serving as

medical director of the Florida chapter. Among his accolades was winning the ITLS Jackie Campbell Award, the organization's highest honor. The global nonprofit works to prevent death and disability through education and emergency care.

Dr. Gianas was posthumously awarded the Wendell N. Rollason Award by the Florida Rural Health Association. The award is presented to individuals who have provided an enduring contribution to rural health care. Additionally, Dr. Gianas was posthumously awarded the Marilyn Crook EMS Pioneer Award by the State Department of Health, which recognizes individuals who have advanced EMS through visionary leadership, managing innovation, and promoting the use of best practices by

building internal and external partnerships to address common issues, enhance communication, and evaluate progress to adapt to changing conditions in the EMS system.

Dr. Gianas advocated that it shouldn't matter if you were in the biggest city in the Country or the smallest, you deserved the same level of healthcare. He didn't just believe that, he made that his lifework. He made many trips to other countries to perform charity work, further demonstrating his passion for equal healthcare. It is difficult to put into a few words the legacy that Pete leaves behind. Over the years, he has been a mentor, teacher, caregiver, friend, and father figure to countless individuals. From his tenure in the emergency room, to his time spent as Medical

Director for multiple EMS agencies, Dr. Gianas leaves behind a legacy of compassion for his patients and superior healthcare in rural communities. His legacy is carried on daily by those who were fortunate enough to have trained under him. The number of lives positively impacted by Dr. Gianas is unfathomable.

Over the course of our lives, we meet an incomprehensible number of people, many of whom will leave a lasting impression. However, it is a true rarity to meet not one, but TWO individuals who have had such a profound impact on countless people around the world. True giants among men. Their legacies will live on for many generations to come.



# Chamber Humanitarian of the Year: Bobby Autry

Historians tell us that the first recorded apothecary was opened in ancient Babylon over 500 years ago.

Since that day, the town pharmacist has become a trusted partner to members of their community who rely on their help and advice.

Bobby Autry was born for this role and he maintained the trust of thousands of local citizens who became more like members of his family.

If you needed a prescription after hours due to a family emergency, Bobby was always willing to take the phone call. He would also be the guy who was willing to deliver needed prescriptions to your door at any hour of the night.

Bobby was perhaps best known for his time behind the counter at Mitchell's Drug Store in downtown Starke. You could receive advice regarding your over-the-counter medical needs,

pick up needed supplies, savor a milk shake at the old-fashioned fountain and shoot the bull with your buddies while enjoying lunch.

This was a homage to the days when a community pharmacist would truly act as a public servant. A pharmaceutical mayor of sorts. And at Mitchell's Drugs you always were able to talk to Bobby about your medical needs, regardless of your station in life or your ability to pay. Bobby was always calm, soft-spoken, and reassuring...care and compassion were his trademarks.

And how many of you remember that he became famously known as "The Singing Pharmacist" as a result of a radio ad campaign on Eagle Country 106.3?

His nearly half a century of service involved working with local hospitals and nursing homes. He worked

in other retail pharmacies - the local CVS, Shands at Starke, Madison Street Pharmacy and most recently, with his son, Jim, at North Florida Pharmacy in Keystone Heights. He willingly assisted the most vulnerable in their time of need. His love for his customers was only exceeded by his passion for his family and his friends.

Virginia, his children Cassie, Jim, Scott, Josh and their spouses and his grandkids were the apples of his eye. His friendship with the late Dr. Pete Gianas was a testament to his loyalty. It also provided me — and I am sure many of you — with countless hours of entertainment.

It has been said that a great pharmacist helps patients heal ... not only with medicines but also with compassion and understanding. No one did it better than Robert Michael Autry. Thank you for allowing us to take a



few moments to recognize a life well-lived.

Prescriptions may expire, but Bobby's legacy will live forever.

# 7.99%\*

## Equipment Loan Financing

We provide comprehensive financing for equipment and vehicles, including purchase and refinance options.

Contact Us To Get Started! | 904-796-0660 | [ffbf.com](http://ffbf.com)



FIRST FEDERAL BANK

\*7.99% available to those who qualify. Loan approval is subject to credit underwriting and approval. Loan minimum is \$5,000 and loan maximum is up to and including \$75,000, fixed interest rate for up to 60 months, fully amortizing with principal payments. Customer is responsible for closing costs. First Federal Bank business checking account and auto debit required.

Member  
FDIC

Your First Federal Bank  
Commercial Lending Team

Jeff Oody

Jason Cason





# North Florida Regional Chamber of Commerce Directory

## ACCOUNTING & TAX SERVICE

**Reddish & White, CPAs**  
904-964-7555  
<http://www.reddishandwhite.com>

## ADVERTISING, PRINTING, SIGNS

**Showcase Advertising**  
904-964-7446  
<http://www.goshowcase.com>

## AIRPORT

**Keystone Airport**  
352-473-0031  
<http://www.keystoneairport.com>

## ANTIQUES

**The Shoppes at Thompson Street**  
352-445-0709

## APPLIANCE SERVICE

**Winkler Electric, Inc.**  
904-964-7596

## ATTORNEYS

**Julie Waldman**  
352-538-1514  
<http://www.juliewaldman.com>

## Law Offices of Ron Sholes

904-964-4055

## Paul Sanders, P.A., Attorney At Law

904-964-2323  
<http://www.paulsanderslaw.com>

## AUTOMOBILE DEALERS

**Duval Chevrolet**  
904-964-7500  
<http://duvalchevy.com>

## Murray Automotive Group

904-964-7200  
<http://www.shazamauto.com>

## BANKS AND FINANCIAL INSTITUTIONS

**Capital City Bank -Starke**  
904-964-7050  
<http://www.ccbg.com>

## DLP of Lake Butler

386-496-3333  
<https://www.dlp.bank>

## DLP of Starke

904-964-7830  
<https://www.dlp.bank>

## First Federal Bank

386-755-0600 ext 5077  
<https://www.facebook.com/FirstFederalBan>

## BEAUTY SALONS

**Nicky's Beauty Bar**  
904-454-1381  
[www.nickysbeautybar.net](http://www.nickysbeautybar.net)

## Smooth Addiction

**Beauty and Body**  
904-769-9840  
[www.smoothaddiction.com](http://www.smoothaddiction.com)

## BED & BREAKFAST

**Paula Register**  
352-468-2703  
<http://www.hamptonlakebb.com>

## BRIDAL & TUXEDO

**It's Your Day Bridal & Formal Boutique LLC**  
904-964-3100  
<https://www.facebook.com/ItsYourDayBridal/>

## BUILDING MATERIALS

**Jackson Building Supply of Lake Butler**  
386-496-3079

## Jackson Building Supply of Starke

904-964-6078  
<http://www.jacksonbuildingsupply.com>

## CHAMBERS OF COMMERCE

**North Florida Regional Chamber of Commerce**  
904-964-5278  
<http://www.northfloridachamber.com>

## CHIROPRACTORS

**The Chiropractic & Injury Clinic of Starke**  
904-964-8018  
<http://southsidechiropracticcarinjuryclinic.com>

## CHURCHES

**First Baptist Church of Starke**  
904-964-6562  
<https://www.fbcstarke.org>

## Good Shepherd Lutheran

904-964-8855

## Hope Christian Academy

352-473-4040  
<http://www.myhopechristianacademy.org>

## Madison Street Baptist Church

904-964-7557  
<http://www.madisonstreet.org>

## CIVIC GROUPS AND CLUBS

**Bradford Agricultural Fair**  
904-964-5252  
<https://bradfordcountyfair.com>

## Kiwanis Club of Starke

904-966-3022  
<http://www.starkekiwanis.org>

## Rotary Club of Lake Butler #4372

386-496-2744  
**Rotary Club of Starke**  
352-468-2703

## Woman's Club of Starke

904-966-3022  
<http://www.womansclubofstarke.com>

## CLINICS & MEDICAL GROUPS

**ACORN Clinic**  
352-485-1133  
<http://www.acornclinic.org>

## Village Doctors

904-964-5455  
<http://www.villagedoctorsfla.com>

## COFFEE SHOPS

**Hometown Grounds Coffee Company**  
904-454-1497  
<http://hometowngrounds.com>

## COLLEGE / UNIVERSITY

**Santa Fe College - Andrews Center**  
904-964-5382  
<http://www.sfcollege.edu>

## COMPUTER SERVICES

**Digital Solutions of Starke, Inc.**  
904-964-6947  
<http://www.digitalsolutionsstarke.com>

## CONSTRUCTION COMPANIES - BUILDERS, GENERAL CONTRACT, SITEWORK

**Stevenson Construction Company**  
904-964-5086  
<http://www.stevensonhomebuilders.com>

## CONSTRUCTION, METAL BUILDINGS

**Union Lasteel Metal Building, Inc.**  
386-496-0681  
<http://www.unionlasteel.com>

## CONVENIENCE AND GAS STATIONS

**Lawtey Shell / Carl's Ice Cream**  
904-782-3580

## CREDIT UNIONS

**Florida Credit Union**  
904-964-1427  
<http://www.flcu.org>

## VyStar Credit Union

904-368-9955  
<http://www.vystarcu.org>

## DANCE STUDIO

**Starke Dance Academy**  
904-796-3833  
[www.starkedanceacademy.com](http://www.starkedanceacademy.com)

## DENTISTS, DENTAL LABS, DENTAL CARE

**Starling Family Dentistry, PA**  
352-473-9090

## DOCTOR

**Ibrahim Heart Clinic**  
904-368-1239  
<http://www.IbrahimHeart.com>



---

**EDUCATION - EARLY CHILDHOOD EDUCATION****Episcopal Children's Services**

904-964-8280

<http://www.ecs4kids.org>**EDUCATION / EDUCATIONAL FACILITIES / OFFICIALS****Bradford County School Board**

904-966-6025

<http://www.bradfordcountyschools.org>**C.I.S. (Communities in Schools)**

904-966-6075

<http://www.cisbradford.org>**North Florida Technical College**

904-966-6764

<http://www.bradfordschools.org/nftc>**EMPLOYMENT AGENCIES****CareerSource Florida Crown**

386-755-9026

<http://www.careersourcefloridacrown.com>**CareerSource NC FL OneStop Career Ctr**

904-964-8092

<http://www.employflorida.com>**CareerSource North Central Florida**

352-955-2245

<http://www.careersourcencfl.com>**FINANCIAL & FINANCIAL ADVISORS****Advance America**

904-964-7900

**FITNESS CENTER, AROBICS, SPIN CLASSES,****FREE WEIGHTS, TREAD MILLS****Anytime Fitness**

904-964-3488

<http://www.anytimefitness.com>**North Florida Fitness**

904-454-1471

<https://northfloridafitness.gymmasteronline.com>**FUNERAL HOMES****Archer Funeral Home**

386-496-2008

<http://archerfuneralhome.com>**Ferreira Funeral Home**

904-964-5757

<http://www.ferreirafunderalservices.com>**Jones-Gallagher Funeral Home - Keystone**

352-473-3176

<http://www.jonesgallagherfh.com>**Jones-Gallagher Funeral Home-Starke**

904-964-6200

<http://www.jonesgallagherfh.com>**FURNITURE & APPLIANCES****Badcock Home Furnishing Center**

386-496-3334

<http://www.badcock.com>**Badcock Home Furnishing Center**

904-964-5289

<https://www.badcock.com/starke-fl>**Farmer's Furniture**

904-964-9616

<http://www.farmershomefurniture.com>**GOVERNMENT****Bradford County Board of Commissioners**

904-966-6327

<http://www.bradfordcountyfl.gov>**Bradford County Clerk of the Court**

904-966-6281

<http://www.bradfordcountyfl.gov>**Bradford County Property Appraiser**

904-966-6218

<http://www.bradfordappraiser.com>**Bradford County Supervisor of Elections**

904-966-6266

<http://www.bradfordelections.com>**Bradford County Tax Collector**

904-966-6274

<http://www.BradfordTaxCollector.com>**Bradford Soil & Water Conservation**

904-368-1201

<http://district.afcd.us>**City of Hampton**

352-468-1201

<http://www.hamptonfl.com>**City of Keystone Heights**

352-473-4807

<http://www.keystoneheights.us>**City of Lake Butler**

386-496-3401

<http://www.cityoflakebutler.org>**City of Lawtey**

904-782-3454

**City of Starke**

904-964-5027

<http://www.cityofstarke.org>**Congresswoman Kat Cammack**

904-276-9626

**N Central FL Regional Planning Council**

352-955-2200

<http://www.ncfrpc.org>**State Senator Jennifer Bradley**

904-278-2085

**GROCERIES****ALDI**

855-955-2534

<http://aldi.u>**HANDYMAN****Affordable Handyman**

910-489-6544

**HEALTH RELATED PROFESSIONS****Answers Health & Resource Facility**

904-964-7000

**Legacy Home Health Care**

904-964-3712

<http://www.legacyhhc.biz>**Windsor Health and Rehab**

904-964-3383 / 352-514-1898

<http://windsorhrc.com>**HEATING & AIR CONDITIONING DISTRIBUTORS,  
EQUIPMENT & REPAIRS****Hayes Electric & Air Conditioning Company, Inc**

904-964-8744

**HOME INSPECTIONS****North FL Inspection Solutions**

904-648-NFIS (6347)

<http://www.NFInspectionSolutions.com>**HOSPITALITY****Keystone Heights RV Resort**

352-645-6330

<http://keystoneheightsRV.com>**HOSPITALS****Lake Butler Hospital**

386-496-2323

<http://www.lakebutlerhospital.com>**HOTEL / MOTEL****Best Western Waldo Inn & Suites**

352-468-2500

**The Chemours Company, FC TT**

(904) 964-1225

[http://www.chemours.com/Florida\\_Mine/en\\_US/about.html](http://www.chemours.com/Florida_Mine/en_US/about.html)**Holiday Inn Express - Starke**

904-263-5430

<https://www.ihg.com/holidayinnexpress/hotels/us/en/starke/gnvsk/hoteldetail>**Magnolia Hotel**

904-964-6305

**ICE CREAM SHOP****Strickland's Scoop****INDIVIDUAL MEMBERSHIP****Honorable Elzie Sanders**

904-964-7344



---

**Stay Ready Defense**  
850-728-0538  
**Tommy Tomlinson**  
352-519-8289

**INDUSTRIAL SERVICES, CONSULTING**  
**CS Tech Incorporated**  
904-477-5619

**INSURANCE COMPANIES**  
**Farm Bureau Insurance, Shane Parmenter**  
904-964-6369  
[www.floridafarmbureau.com](http://www.floridafarmbureau.com)

**George Roberts Insurance, Inc**  
904-964-7826  
<http://www.georgerobertsins.com>

**Globe Life: Liberty National Division**  
**904-563-3521**  
<https://ln.globelifeinsurance.com/united-states/florida/jacksonville/briancannington.com>

**Roberts Insurance of Keystone Heights**  
352-473-7209  
<http://www.georgerobertsins.com>

**INVESTMENTS**  
**Edward Jones Investments**  
(904) 964-1486  
<http://www.edwardjones.com>

**JEWELRY, REPAIRS, WATCHES**  
**Williams Family Jewelry**  
904-964-7064  
[www.facebook.com/WilliamsJewelryFamily](http://www.facebook.com/WilliamsJewelryFamily)

**LANDFILL**  
**New River Solid Waste Association**  
386-431-1000  
<http://www.nrswa.org>

**LOCKSMITH, KEYS, REPAIRS**  
**Bill's Lock & Key**  
(904) 964-9707

**MANUFACTURERS**  
**The Chemours Company, FC TT**  
(904) 964-1225  
[http://www.chemours.com/Florida\\_Mine/en\\_US/about.html](http://www.chemours.com/Florida_Mine/en_US/about.html)

**Royce Company**  
863--632-7867  
<http://roycecompany.com>

**MASSAGE THERAPY / CLINIC**  
**Libby's Art of Healing LLC**  
904-964-HEAL (4325)  
<http://www.libbysmassage.com>

**MEDICAL CARE, NON-PROFIT**  
**Palms Medical Group**  
(904) 364-2900  
<http://www.palmsg.org>

**MEDICAL FACILITY / DOCTOR OFFICE**  
**The Starke Weight Place/The Weight Doctor**  
904-964-3335  
<http://theweightdoctors.com>

**MORTGAGE LOANS & BANKERS**  
**Farm Credit of Florida, ACA**  
(386) 462-7634  
<http://www.farmcreditfl.com>

**NEWSPAPERS**  
**Bradford County Telegraph**  
(904) 964-6305  
<http://www.bctelegraph.com>

**Keystone Heights Herald**  
(352) 502-9700  
<http://claytodayonline.com>

**NON-PROFIT ORGANIZATIONS**  
**ARC of Bradford County**  
(904) 964-7699  
<http://www.arcbradford.org>

**Boy Scouts of America - N Florida Council**  
352-317-8007  
<http://nfcscouting.org>

**Bradford Education Foundation**  
(904) 966-6025  
<http://www.bradfordcountyeducationfoundation.org>

**Concerned Citizens of Bradford County, Inc.**  
904-964-2298

**LifeSouth Community Blood Center, Inc.**  
(352) 334-1000  
<http://www.lifesouth.org>

**Partnership for Strong Families**  
321-244-1616  
<http://pfsf.org>

**Santa Fe College Foundation, Inc.**  
(352) 395-5200  
<http://www.sfcollege.edu>

**The Guardian Foundation, Inc.**  
352-283-5817  
<http://guardian8foundation.org>

**Tornado Touchdown Club**  
904-368-1114

**NUTRITION - SHAKES, TEAS, MEAL REPLACEMENTS**  
**Nutrition Escape**  
386-365-1509  
<https://www.facebook.com/NutritionEscape>

**OFFICE SUPPLIES, EQUIPMENT & FURNITURE**  
**The Office Shop**  
(904) 964-5764  
<http://www.theofficeshopofstarke.com>

**OPTOMETRISTS, OPTICIANS & OPTICAL LABS**  
**Bradford County Eye Center**  
(904) 964-8076  
<http://www.visionsource-drschlofman.com>

**PEST CONTROL SERVICES**  
**Florida Pest Control**  
(904) 964-5745  
[http://www.flapest.com/locations\\_starke.aspx](http://www.flapest.com/locations_starke.aspx)

**Sheffield Pest Control**  
(904) 964-9111

**PHYSICAL THERAPY**  
**Lake Area Physical Therapy, Inc.**  
(352) 473-7560  
<http://www.lakeareapt.com>

**PHYSICIANS & SURGEONS**  
**MainStreet Family Care**  
904-263-5422  
<http://mainstreetfamilycare.com>

**PLANTS SALES, LEASING, MAINTENANCE**  
**Emerson Nursery & Rental Plants**  
(352) 494-6286

**PORTABLE TOILET SERVICES**  
**Pit Stop Portable Restrooms**  
(904) 874-3361

**PRESSURE WASHING**  
**Paul Edwards Pressure Washing, LLC**  
904-686-4633  
<https://www.pauledwardspressurewashing.com>

**PRINTING AND COPYING SERVICES**  
**Renaissance Printing**  
(352) 538-3092  
<http://www.renaissance-printing.com>

**RADIO STATION**  
**WEAG - FM 106.3**  
(904) 964-5001  
<http://www.weagchuckkramer.com>

**REAL ESTATE**  
**C.B. Isaac Realty**  
(352) 473-6201  
<http://www.CBIsaacRealty.com>

**Coldwell Banker/Smith & Smith Realty**  
(904) 964-9222  
<http://www.smithandsmithrealty.com>

**CW Realty**  
904-964-3948  
<http://www.cwrealty.org>

**Hatch Realty Services**  
352-478-8838  
<http://hatchrealty.com>

**Helen Hersey Realty**  
(352) 473-8882  
<http://www.helenhersey.com>

**Kahle Commercial Group**  
904-838-6446  
[www.Kahlecommercialgroup.com](http://www.Kahlecommercialgroup.com)



**Roberts Land & Timber Investments Corp.**  
(386) 496-3509  
<http://www.flaland.com>

**Southland Realty & Management Co.**  
352-258-4619  
[www.southlandrealty.com](http://www.southlandrealty.com)

**Starke Medical Center, Inc**  
352-219-0498

**Swift Creek Realty**  
(386) 496-0499  
<http://www.swiftcreekrealty.net>

**RECREATIONAL SHOOTING RANGE**  
**Bradford Sportsmen's Farm**  
(352) 485-2302  
<http://www.bsfsshootingsports.com>

**RENDERING PLANT**  
**Darling Ingredients / DAR PRO Bakery Feeds**  
904-263-5764 or 855-327-7761  
<http://www.darpro-solutions.com>

**RENTALS PARTY & EQUIPMENT**  
**Funtastic Fire Brigade**  
904-701-FIRE (3473)  
<http://funtasticfire-brigade.ueniweb.com>

**RESTAURANTS**  
**Beef O Brady's**  
(904) 964-2716

**Call Street Café**  
904-368-9922  
<https://www.facebook.com/callstreetcafe>

**Dick's Wings & Grill**  
904-368-8158

**Downtown Grill**  
904-964-9253

**IHOP**  
(904) 368-9945  
<http://www.ihop.com>

**McDonald's Restaurant**  
(352) 332-0987

**Orange Blossoms - KH**  
352-473-9873  
<https://www.orangeblossoms.co>

**Tony's Italian Restaurant**  
904-364-0032

**RETAIL BUSINESSES**  
**Bradford Gun LLC**  
904-964-5440  
[www.facebook.com/BradfordGun](http://www.facebook.com/BradfordGun)

**Sporting Chance**  
904-964-7434  
<https://www.facebook.com/Starke.Sporting.Chance>

**SANITARY WASTE WATER**  
**Engineered Spray Solutions, LLC**  
863-577-4821  
<http://ess-1.net>

**STORAGE BUILDINGS**  
**Santa Fe Storage**  
904-964-3400  
<http://santafestorage.net>

**TAILOR SHOP**  
**One Stop Inc / Miyong's Tailor Shop**  
904-966-2002

**TELECOMMUNICATIONS**  
**Uniti Fiber**  
478-308-2963  
<https://uniti.com>

**THEATERS**  
**Florida Twin Theater**  
(904) 964-5451  
<http://www.floridatwintheatre.com>

**TIMBER COMPANY**  
**Rayonier Forest Resources, LP**  
(904) 964-7962

**TOW TRUCK**  
**Miracle Automotive & Truck Service Center**  
904-368-0006  
<http://www.facebook.com/MiracleAutomotive>

**TRANSPORTATION**  
**Davis Express, Inc.**  
(904) 964-6619  
<http://www.davis-express.com>

**UTILITIES**  
**Clay Electric Cooperative, Inc.**  
352-473-8000  
<http://www.clayelectric.com>

**Florida Power & Light Company**  
(800) 226-3545  
<http://www.fpl.com>

**VETERINARIANS**  
**Lake Area Animal Hospital**  
(352) 475-2326  
<http://www.lakeareavets.com>

**WEB DESIGNER / HOST**  
**Designs By CM**  
(605) 695-9186  
<http://www.dbycm.com>



*Shop Local*





R E A L T Y

RESIDENTIAL - COMMERCIAL - VACANT LAND - RENTALS

*Holding The Keys To Your Dream*



Barbie Clemons  
Realtor



Brenda Thornton  
Realtor



Carrie Crews  
Broker Associate



Candace Bratcher  
Realtor



Cassie Cooper  
Transaction  
Coordinator



Charnelle Whittemore  
Owner/Broker



Crystal Rosier  
Realtor



Dallin Crews  
Realtor



Jaycea Edwards  
Realtor



Kimberly Hanna  
Realtor



Lauren Allen  
Realtor



Lindsey Brooks  
Realtor



Lindsey Walker  
Realtor/  
Property Manager



Michael Whittemore  
Broker Assistant/  
CFO



Minta Bennett  
Realtor



Rachael Benton  
Realtor



Rachel Brinson  
Realtor



Sheila Daugherty  
Realtor



Steven Milligan  
Realtor



Susan Walker  
Realtor



Taryn Lewis  
Broker Associate



Terra Lazenby  
Realtor

*Starke:*  
**904-964-3948**

[WWW.CWREALTY.ORG](http://WWW.CWREALTY.ORG)

*Keystone Heights:*  
**352-478-8490**