

Clay County Division of Emergency Management

ALL HAZARDS PREPAREDNESS GUIDE



Clay County Emergency Operation Center

Alert.ClayCountyGov.com
[Twitter.com/ClayCounty_EM](https://twitter.com/ClayCounty_EM)
[Facebook.com/ClayCtyEM](https://facebook.com/ClayCtyEM)



Hello, Clay County. John Ward, Director of Emergency Management. As residents may know, multiple types of disasters can impact Clay County, from hurricanes to wildfires to pandemics. Having a plan in place ahead of time can make all the difference in an emergency.

We encourage you to use the Clay County All Hazards Guide as your baseline for preparing you, your family, and your business for a disaster. Please pay close attention to the evacuation zones, updated and expanded in 2022, on pages 11 and 12 of this guide.

I also urge you to enroll in **Alert.ClayCountyGov.com** to receive updates related to hazardous conditions within your respective area.

Thank you, Clay County, and stay safe.

- John Ward

*Director of Clay County
Emergency Management*



The Clay County Emergency Operation Center during an emergency.

Contact Information



Clay County Emergency
Management Office
(904) 284-7703



Clay County
Fire Rescue
(904) 284-7703



Florida Department of
Health - Clay County
(904) 529-2800



Clay County
Sheriff's Office
(904) 264-6512



Orange Park
Fire Department
(904) 264-3411



Orange Park
Police Department
(904) 264-5555



Green Cove Springs
Police Department
(904) 529-2220



Clay County District
Schools Police Dept.
(904) 336-0100



Emergency
911

Table of Contents

Disaster Preparedness.....3

Get Alerts.....	4
Make A Disaster Kit	5
Special Needs Items.....	6
Special Needs Registration.....	6

Make An Emergency Plan....7

Portable Generators.....	7
Flood Ready.....	8
Reducing Flood Risk.....	9
Evacuation vs. Flood Zones.....	10
Evacuation Zones.....	11-12
Evacuation Shelters.....	13

After A Disaster.....14

Power Outages.....	15
Mosquito Control Services.....	15

**Make A Kit. Make A Plan.
Be Prepared.**

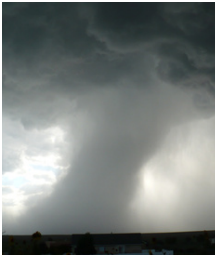


Florida may be the Sunshine State, but Floridians are no strangers to emergency preparedness. Being ready for disasters can make all the difference.

This comprehensive guide will assist you with preparing for emergencies and hazards that affect Clay County, including tornadoes, wildfires, flooding, hurricanes, winds, storm surge, extreme temperatures, thunderstorms, drought, and pandemics.

Be Prepared For Any Emergency.

While hurricanes may be the most talked about, there are many types of disasters that can affect Clay County. Citizens should take steps to be prepared for all hazards and emergencies.



Tornadoes

- Head to an interior room without windows on the lowest floor of the building.
- Never stay in an automobile.
- If you are outside with no shelter, lie down in a low-lying area, flat on the ground with your head covered.



Flooding & Storm Surge

- Learn your flood risk.
- Move to high ground immediately if a Flood Watch is in effect.
- Plan two evacuation routes in case the primary route is cut off.
- Do not drive on or into flooded roads.
- **REMEMBER: Turn Around, Don't Drown**



Winds

- Take cover next to a building or under a shelter.
- Stand clear of roadways or train tracks and keep a safe distance from other cars while driving.
- Watch for flying debris and downed power lines.



Extreme Temperatures

- Monitor Heat and Frost Advisories and Warnings.
- Dress accordingly.
- Ensure pets have access to water and shelter.
- Never leave kids, pets, and the elderly alone.



Active Assailant

- Run/escape if there is an accessible escape path and evacuate the area.
- If unable to run, hide in an area out of the assailant's view, block entry if possible, and remain quiet.
- Fight back **ONLY AS A LAST RESORT**.



Wildfire

- Remove dry leaves and plants within a 5-foot radius of the house.
- Report a fire to the authorities immediately.
- If ordered to evacuate, do so immediately. Do not return until officials have given the 'all clear' to do so.



Hurricane

- Prepare your home for a storm.
- Make your emergency kit and plan.
- Evacuate if you are in an area prone to flooding.
- Notify family members if you choose not to evacuate.



Hazardous Materials Incident

- If asked to evacuate, do so immediately.
- Stay upstream, uphill, and upwind.
- If possible, cover your mouth with a cloth.
- Try not to inhale gases, fumes, and smoke.



Thunderstorms

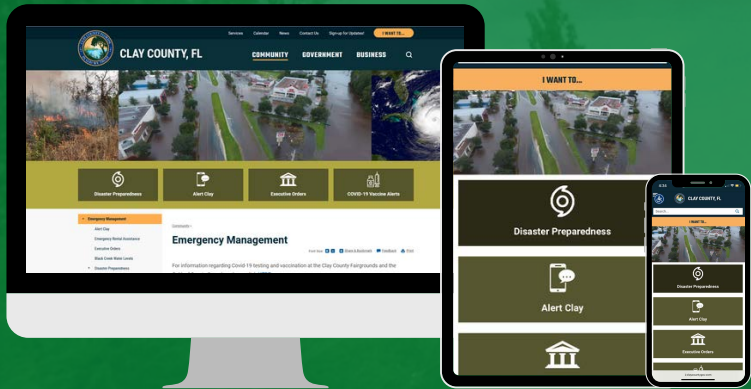
- Retreat to your home or workplace.
- Stay inside for at least 30-minutes after the thunder stops.
- Do not lie down in an open area, near a body of water, or under a tree.
- **REMEMBER: If Thunder Roars, Go Indoors.**



Pandemic

- Get routine and travel-related vaccines.
- Wash your hands frequently with soap and water.
- Avoid contact with sick people.
- Cover your mouth and nose with a face mask when around others.
- Follow CDC recommendations.

STAY INFORMED



Sign up for

ALERT  **Clay County**
Emergency Management's Mass Notification System

Scan here to sign up for alerts.



Receive Clay County-specific emergency alerts sent to your mobile device or home phone. These alerts include evacuation notices, flash flood warnings, tornado warnings, severe thunderstorm warnings, notices of missing persons, etc.

STAY CONNECTED



 Alert.ClayCountyGov.com

 [@ClayCtyEM](https://www.facebook.com/ClayCtyEM)

 [@ClayCounty_EM](https://twitter.com/ClayCounty_EM)



weather.gov/alerts



ready.gov/alerts



FL511.com

Alert.ClayCountyGov.com

The Alert Clay system through Clay County Emergency Management sends emergency alerts such as inclement weather warnings, flood warnings, and evacuation notices to your mobile device or home phone.

SaferWatch App

The SaferWatch App notifies you of verified critical incidents and significant traffic issues in addition to anonymously reporting suspicious and illegal activity to the Clay County Sheriff's Office.

MAKE A DISASTER KIT

Being prepared starts with having everything you need in the event of an emergency. Take a moment to review the items in your disaster kit and restock items that may be missing or need to be replaced.

Items You Should Have In Your Kit...



Car Keys



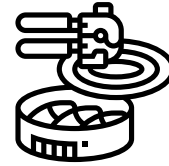
Utensils & Paper Plates



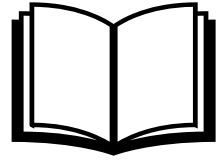
Bug Repellent & Sunscreen



Blankets & Pillows



Can Opener



Entertainment: Books, Games, etc.



Cash & Credit Cards



Important Documents



Change of Clothes



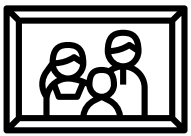
Personal Hygiene Items



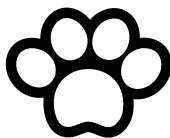
Medical Needs



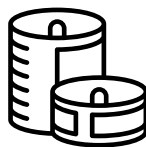
Baby Needs



Family Photos



Pet Care



Non-Perishable Food



Rain Gear



First Aid Kit



Plastic/ Ziplock Bags



Contact List



Flashlight & Radio



Spare Batteries



Drinking Water



Maps & Evacuation Information



Garbage Bags

DON'T FORGET! Pack enough food and water for everyone.



Have enough non-perishable foods for everyone for at least 7 days.



Have one gallon of water per person, per day, for at least 7 days.

THOSE WITH SPECIAL MEDICAL NEEDS

If you are someone with special medical needs or are with someone with special medical needs, ensure that these items are in your Disaster Kit.

Medical Equipment and Supplies



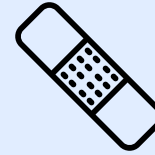
Documentation of Special Medical Information



List of Current Medications & At Least 5-day Supply



Oxygen Supplies



Wound Care Supplies

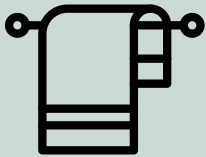


Specialized Medical Equipment

Personal Items



Advanced Legal Directives



Body Wipes And/OR Washcloth & Towel



Special Dietary Foods

For Caregivers



Twin Air Mattress/ Bedding



Portable Lawn/ Lounge Chair

For Clients



Bedding (Sheets, Blanket, And Pillow)

SPECIAL NEEDS REGISTRY

Clay County Emergency Management, with the help of the Florida Department of Health - Clay County, maintains a registry of individuals within the county who have special medical needs. This includes individuals who may require daily skilled nursing care, assistance with daily living, or have life-sustaining or saving medical equipment, which requires electricity.

How to Register

Special Medical Needs Shelters can provide some generated plugs for minor medical equipment such as oxygen concentrators, a limited number of padded cots, and the presence of limited nursing staff from the Florida Department of Health - Clay County.

To register within the Special Needs Registry, contact Clay County Emergency Management at 904-529-2770 and request to have an application mailed to you. Applications can also be completed online at Alert.ClayCountyGov.com.

Shelter determination letters will be sent to individuals following the receipt and review of their application.

Special Needs Shelters are NOT pet-friendly except for qualified service animals.

Special Medical Needs Shelters

Registration does not guarantee that a person will receive assistance during an event. Rather, the information within the registry helps provide important information to local emergency management officials, which will assist them in better planning for the needs of the county's special medical needs population in an emergency.

Registered individuals will have their information evaluated to determine if they are candidates to utilize the county's sole Special Medical Needs Shelter. This shelter is a refuge of last resort for individuals who have special medical needs and must evacuate. Sheltered individuals should be accompanied by a caregiver for the duration of their stay.

MAKE AN EMERGENCY PLAN

It's never too early to make an emergency plan. Clay County residents should have a plan before a storm or other disaster strikes. Here are a few steps to prepare you, your family, your home, and your business.

PREPARING YOUR HOME



- 1 Clean and repair rain gutters and drain pipes. Ensure that objects will not be able to block the flow of water.
- 2 Move patio furniture, potted plants, and other lightweight, unsecured items indoors. Items that cannot be moved indoors should be tied down or otherwise secured.
- 3 Bring inside or turn over objects that collect rainfall. These items can become breeding grounds for mosquitoes.
- 4 Remove trees with rotting trunks and trim limbs and shrubs near your home.

The Do's and Don'ts of Portable Generators

- Run your machine a few times throughout the year to ensure it's ready when you need it.
- Make sure you have plenty of fresh fuel to power your generator.
- Check the oil often and use heavy-duty, properly grounded extension cords.

- **DO NOT** place a running generator inside your home or garage.
- **DO NOT** store fuel in your home or garage near fire hazards.
- **DO NOT** connect a generator to your home electrical box or exceed the wattage of your generator's capacity.

BE FLOOD READY

Clay County has a unique flood dynamic that stems from its riverine and low-lying areas. These areas are vulnerable to seasonal high rainfall, particularly that associated with the annual hurricane season.



Know Your Flood Risk

Anywhere it can rain, it can flood.

Learn more about:

- Your flood zone designation
- Potential flood elevation or “Base Flood Elevation”
- Requirements for developing or conducting substantial home repairs or improvements as they relate to current flood and building regulations

Visiting the Clay County Planning & Zoning Page at ClayCountyGov.com or call 904-529-4705.

Insure Your Property

Flood Damage isn't covered by standard homeowner's insurance policies. Even if you do not live in a high flood hazard area, purchasing a flood insurance policy is highly recommended (this includes contents insurance for renters).

Reduce Your Risk

Explore opportunities to limit your flood risk by personally pursuing flood mitigation activities. Some examples include elevating electrical outlets, service equipment, or other damage-prone components; dry or wet floodproofing; berm construction; or building elevation, demolition, or relocation. You can also work to limit your risk by correcting sewer back-up problems and ensuring that nearby streams, ditches and storm drains are maintained to prevent obstruction.

STORM DRAINS & DITCHES

Stormwater System Dumping Is Illegal

Per Clay County Ordinance 2006-59, it is illegal to dump trash, debris, chemicals, or to discharge any material other than rainwater into stormwater systems, streams, and other surfaces.

To report a problem with a county-owned drainage system, call Clay County Public Works at 904-269-6335. To report an illicit discharge, call Clay County Engineering at 904-269-6301.



County officials are available to speak directly to members of the public regarding questions on how to protect their homes from flood damage. The Clay County Floodplain Manager can be reached at 904-529-3825, and the County's Building Official can be reached at 904-269-6307.

For more information pertaining to flood-related topics, please consult the following resources:



Clay County Planning and Zoning

For general information on flood zones, and floodplain development requirements.

904-529-4705
www.claycountygov.com



The National Flood Insurance Program

For information on flood insurance.

877-336-2627
www.floodsmart.gov

Evacuation vs. Flood Zones

Though often mistaken for each other, Flood Zones and Evacuation are two different things.



Evacuation Zones

Evacuation Zones are areas that may be ordered to evacuate during a hurricane and indicate areas that will be affected by storm surge.

Clay County Evacuation Zones are identified as A, B, C, D, E, North, and South Prongs of Black Creek. Some parts of the county are not in an evacuation zone.

NOTE: All mobile and manufactured homes are considered Zone A, regardless of where they are in the county.



Flood Zones

Flood Zones are federally identified zones indicating a property's risk for flooding throughout the year.

High-Risk Zones have a 1% annual chance of a flood event called the base flood or 100-year flood.

Moderate Risk Zones have a 0.2%-annual-chance (or 500-year) flood, and

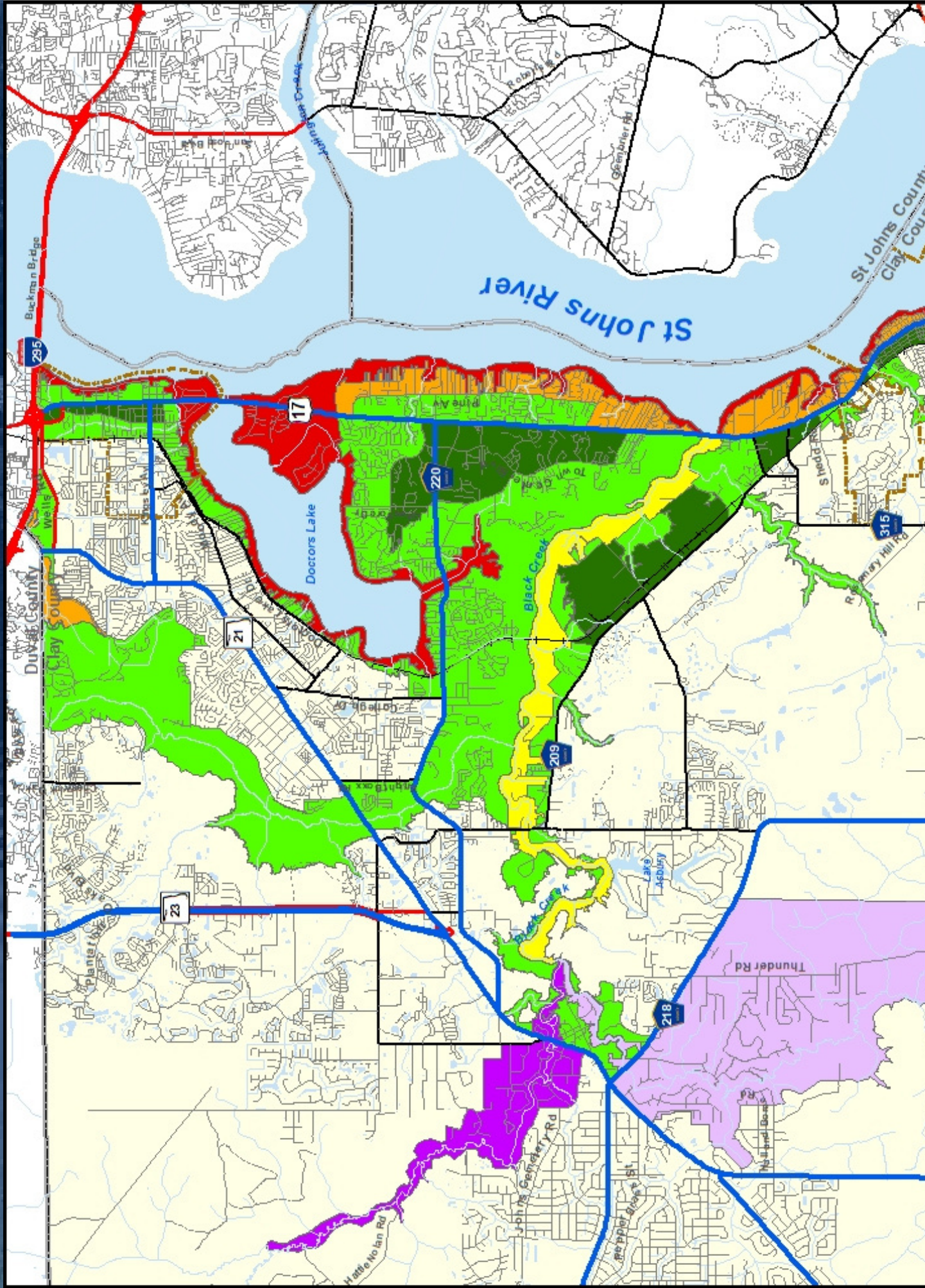
Low-Risk Zones are higher than the elevation of the 0.2-percent-annual-chance flood.

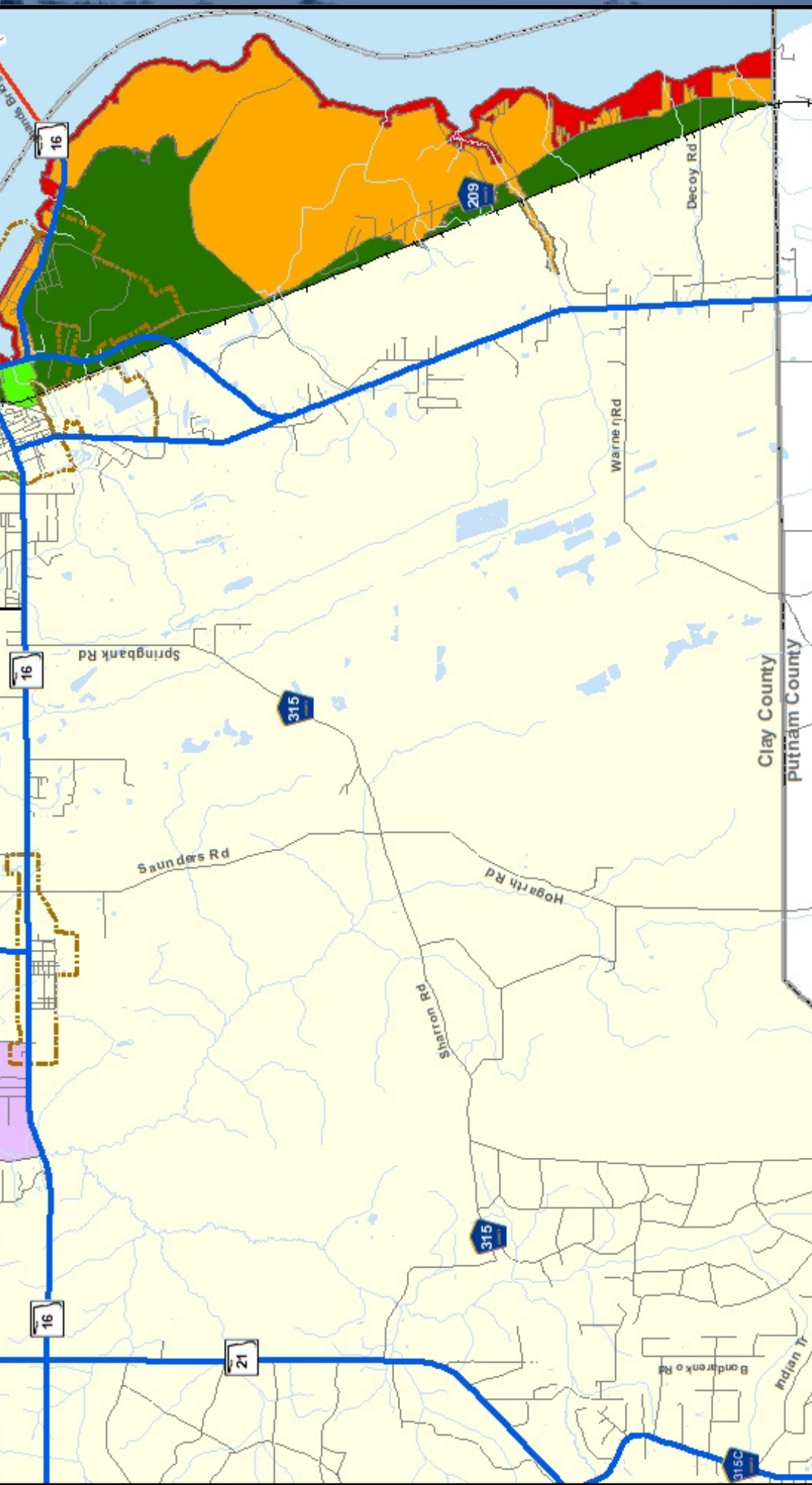


Did You Know?

The 100 and 500-year flood terms are a reference to the probability of a flood and are based on historical data. It is possible for an area to experience a flood event multiple years in a row.

CLAY COUNTY EVACUATION ZONES





Legend

Evacuation Zones

- █ A
- █ B
- █ C
- █ D
- █ E
- █ North Prong Black Creek
- █ South Prong Black Creek
- █ Evacuation Route
- Municipal Boundary

Evacuation zone information is available online at Alert.ClayCountyGov.com



Scan the QR Code here to look up the evacuation zone for your address.



Evacuation Shelters

REMEMBER: A shelter is a refuge of last resort, and the environment can be challenging.

Plan to bring to a shelter: ID, disaster kit, food, change of clothes, prescription medications, sleeping bag and pillow, cash and credit cards, flashlight and batteries, toiletries, important papers, important phone numbers, and quiet activities for children.

Know that not every shelter is open during every event. During an actual event, true shelter locations will be announced through local media and www.ClayCountyGov.com.



DON'T FORGET YOUR PETS!
You can prepare a pet disaster plan at:
FloridaDisaster.org/PlanPrepare/Pet-Plan.
Search for pet friendly hotels at PetsWelcome.com

STAY OR GO? Evacuation During A Storm

Having a plan means knowing when you can safely shelter at home and when it's time to go.

1.) Has Clay County ordered an evacuation?

NO If there is no evacuation order, you can safely shelter in place

YES See question 2

2.) Do you live in a mobile or manufactured home?

NO See question 3

YES Mobile and manufactured homes must be evacuated when an order is called

3.) Do you live in an evacuation zone?

NO Shelter in place and consider hosting a friend

DON'T KNOW Find your evacuation zone on pages 11 and 12 of this guide

YES See question 4

4.) Was your zone ordered to evacuate?

NO Shelter in place and consider hosting friends and family that may need to evacuate

YES It's time to evacuate. Consider the below options when making your evacuation plan

Reach out to family and friends outside the evacuation zone to see if they can host you.

Check on the availability of hotels and motels outside of the evacuation zone.

If you have no other option, go to a Clay County Emergency Shelter.
THIS SHOULD BE A LAST RESORT.

After A Disaster

If you have evacuated, wait for public officials to announce that it is safe to return to your home.



Avoid Driving

Following a storm, traffic signals may not be working, or there may be downed powerlines. Only drive if necessary.



Avoid Floodwaters

Avoid driving or wading through floodwaters, as they may be electrically charged, contain dangerous materials, or be hiding places where the ground has been washed away.



Check for Danger

Check the outside of your home and property for loose powerlines, gas leaks, or structural damage. DO NOT enter a building until it has been inspected.



Protect Yourself

Wear protective gear such as gloves, safety goggles, and masks to shield yourself from debris and other hazards.



Prevent More Damage

Do what you can to prevent more damage to your home, such as placing a tarp over a hole in the roof or covering a broken window.



Avoid Electrical Equipment

DO NOT use any electrical equipment if it is wet or if you are standing in water.

Power After A Storm



- If you see a downed powerline, do not touch it. Do not touch tree limbs or other objects touching a powerline. Report damage to a power line, contact your electric company.
- Do not attempt to tie generators into the house circuit. Plug appliances directly into the generator.



Power Outage?

City of Green Cove Springs 904-297-7500	JEA 904-665-6000	Clay Electric 1-888-438-9844	Florida Power & Light 800-468-8243
---	---------------------	---------------------------------	--



Mosquito Control Services

Mosquitoes and the diseases they carry can cause significant risks to you, your family, your pets, livestock, and wild animals. Standing water after a storm event can create a breeding ground for bugs and mosquitos.

After a storm event:

- Cover bare skin with insect repellent and wear long sleeves and pants when outside
- Check and repair screens on windows and doors
- Drain standing water to prevent mosquito breeding sites
- Remove debris and water from rain gutters and downspouts.



Clay County Mosquito Control provides residents with a comprehensive Integrated Pest Management program involving county-wide surveillance, vector disease testing, breeding habitat identification and remediation, larviciding, aduticiding, as well as public education.

For more information, visit: ClayCountyGov.com/Community/Mosquito-Control-Services